

SLC ARP Fun Facts **STRUCTURAL**

PILES



PHASE 1

96 MILES

05 Piles: 80 Miles
06 Piles: 16 Miles

PHASE 2

32.65 MILES

SCE Piles: 14.44 Miles
Tunnel Piles: 18.21 Miles

PHASE 3

5.65 MILES

NCE Piles: 5.65 Miles

PHASE 4

11.90 MILES

NCE Piles: 11.90 Miles

TOTAL: 146.2 MILES
(26.6 x Mount Everest)



STEEL



PHASE 1

35,380 TONS

05 Rebar: 3,076 Tons
05 Struct Steel: 20,428 Tons
06 PKG Rebar: 8,435 Tons
06 Roadway Rebar: 3,441 Tons

PHASE 2

9,625 TONS

SCE Rebar: 1,300 Tons
SCE Struct Steel: 4,500 Tons
Tunnel Rebar: 3,825 Tons

PHASE 3

4,034 TONS

NCE Rebar: 734 Tons
NCE Struct Steel: 3,000 Tons
20 PKG Rebar: 300 Tons

PHASE 4

15,900 TONS

NCE Rebar: 1,300 Tons
NCE Struct Steel: 14,600 Tons

TOTAL: 64,939 TONS
(573 x Blue Whales)



CONCRETE



PHASE 1

357,000 CY

05 Concrete: 40,000 CY
06 PKG: 87,000 CY
06 Roadway: 30,000 CY
Apron: 200,000 CY

PHASE 2

301,775 CY

SCE: 17,657 CY
Tunnel: 48,118 CY
Apron: 236,000 CY

PHASE 3

58,500 CY

NCE: 8,500 CY
Apron: 50,000 CY

PHASE 4

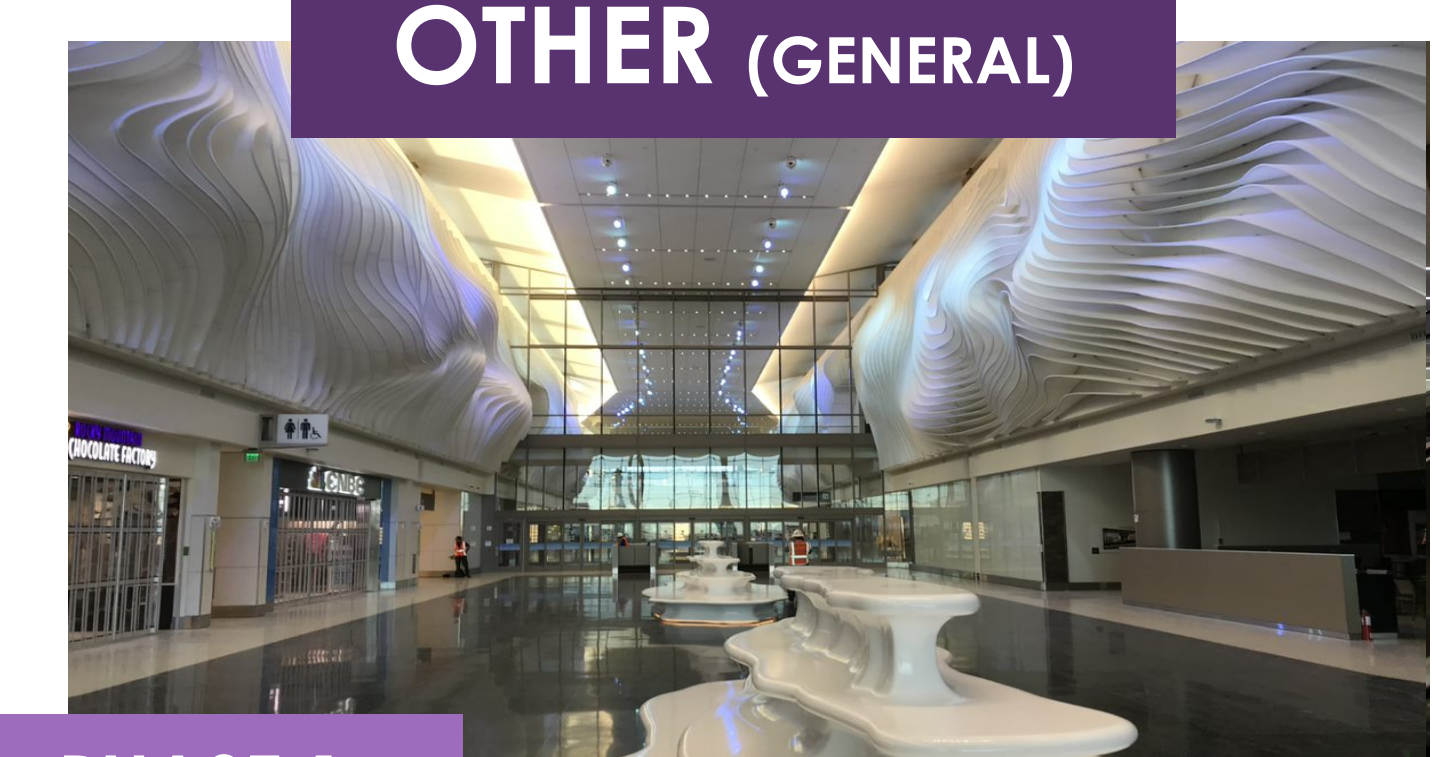
79,500 CY

NCE: 15,500 CY
Apron: 64,000 CY

TOTAL: 796,775 CY
(172,090 x Refrigerators)



OTHER (GENERAL)



PHASE 1

3,620,321 SF

QTA Area: 469,567 SF
RSS Area: 31,140 SF
SCW Area: 410,547 SF
TRM Area: 866,087 SF
GWY Area: 77,778 SF
CUP Area: 49,402 SF
PKG Area: 1,715,800 SF

PHASE 2

477,460 SF

SCE Area: 337,739 SF
Tunnel Structure Area: 139,721 SF

PHASE 3

338,562 SF

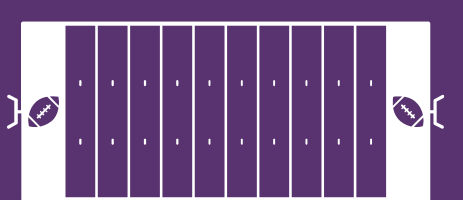
NCE Area: 198,841 SF
Tunnel Build-Out Area: 139,721 SF

PHASE 4

326,586 SF

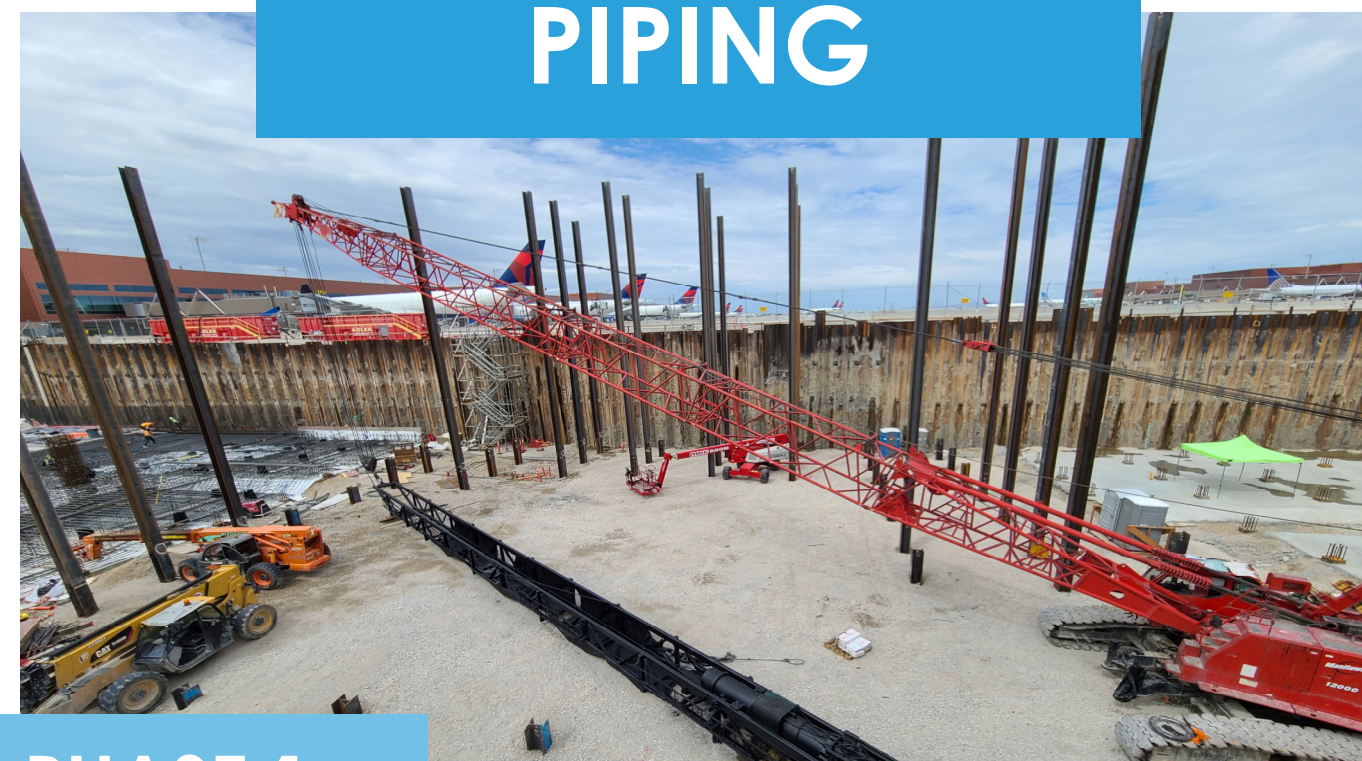
NCE Area: 326,586 SF

TOTAL: 4,762,929 SF
(82.7 x Football Fields)



SLC ARP Fun Facts SYSTEMS

PIPING



PHASE 1

172.3 MILES

05 Piping: 158 Miles
06 Roadways: 2.8 Miles
Apron Utilities : 11.5 Miles

PHASE 2

65.7 MILES

SCE Piping: 49.3 Miles
Apron Utilities: 16.4 Miles

PHASE 3

37.7 MILES

NCE Piping: 32 Miles
Apron Utilities: 5.7 Miles

PHASE 4

38.7 MILES

NCE Piping: 22.5 Miles
Apron Utilities: 16.2 Miles

TOTAL: 314.4 MILES
(2 x Wasatch Range)



ELECTRICAL WIRING



PHASE 1

1,212 MILES

Branch Wiring: 966 Miles
Feeders: 246 Miles

PHASE 2

426.2 MILES

Branch Wiring: 407.2 Miles
Feeders: 19 Miles

PHASE 3

336 MILES

Branch Wiring: 308 Miles
Feeders: 28 Miles

PHASE 4

323 MILES

Branch Wiring: 284 Miles
Feeders: 39 Miles

TOTAL: 2,297.2 MILES
(1.17 x Distance from SLC to NYC)



TELECOM



PHASE 1

776.2 MILES

Copper: 368 Miles
Fiber: 404 Miles
Cable Tray: 4.2 Miles

PHASE 2

101.6 MILES

Copper: 78 Miles
Fiber: 23 Miles
Cable Tray: 0.6 Miles

PHASE 3

61.3 MILES

Copper: 44.5 Miles
Fiber: 16.2 Miles
Cable Tray: 0.6 Miles

PHASE 4

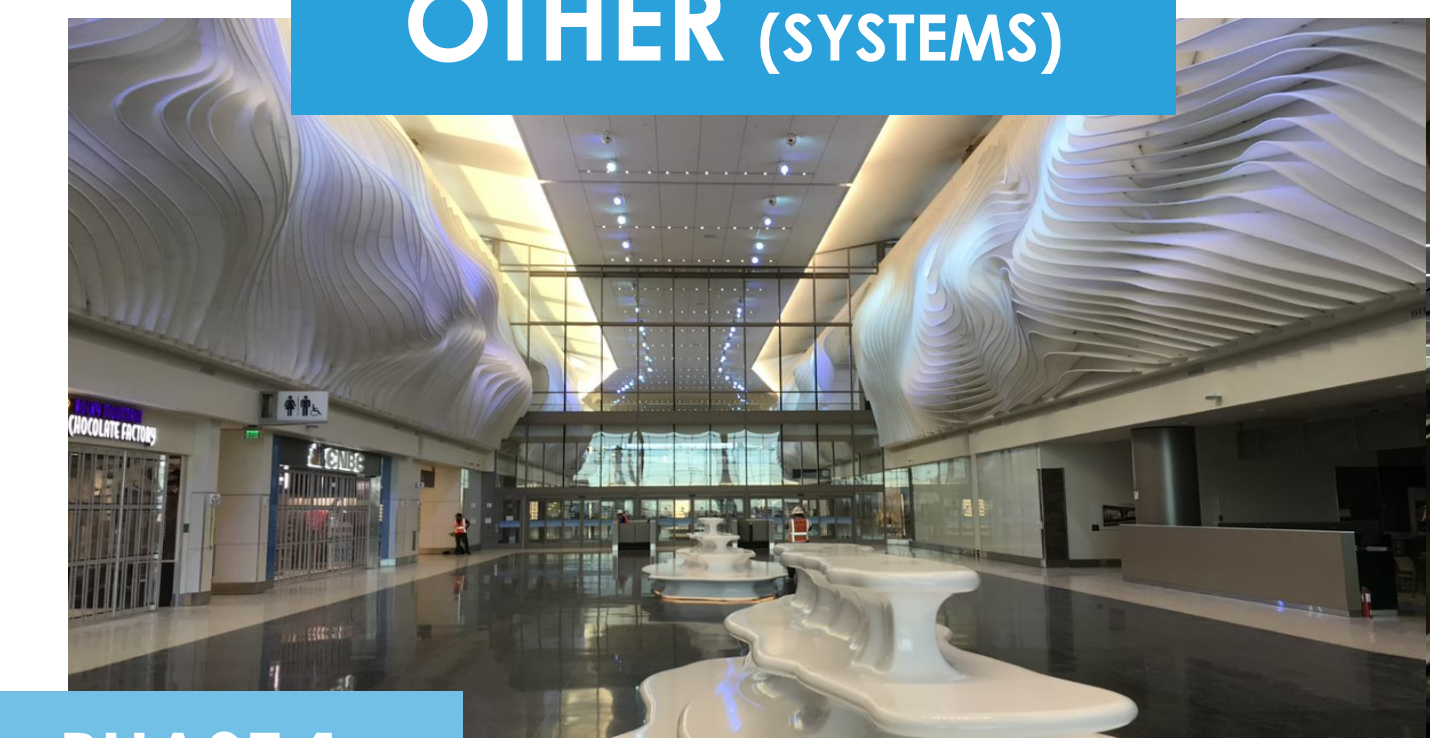
143.8 MILES

Copper: 127 Miles
Fiber: 16.4 Miles
Cable Tray: 0.4 Miles

TOTAL: 1082.9 MILES
(6.97 x Park City Ski Slopes)



OTHER (SYSTEMS)



PHASE 1

Ductwork: 750 Tons
Valves: 8,500 EA
BHS Catwalk: 2.5 Miles
BHS Conveyor: 6.7 Miles
Taxi Lighting: 780 EA

PHASE 2

SCE Ductwork: 200 Tons
SCE Valves: 4,200 EA
BHS Catwalk: 0.25 Miles
BHS Conveyor: 0.75 Miles
Taxi Lighting: 827 EA

PHASE 3

SCE Ductwork: 150 Tons
SCE Valves: 3,200 EA
BHS Catwalk: 0.43 Miles
BHS Conveyor: 1.38 Miles
Taxi Lighting: 54 EA

PHASE 4

SCE Ductwork: 200 Tons
SCE Valves: 3,460 EA
BHS Catwalk: 0.24 Miles
BHS Conveyor: 0.38 Miles
Taxi Lighting: 518 EA

TOTAL: #N/A
(1.0 x Black Hole)