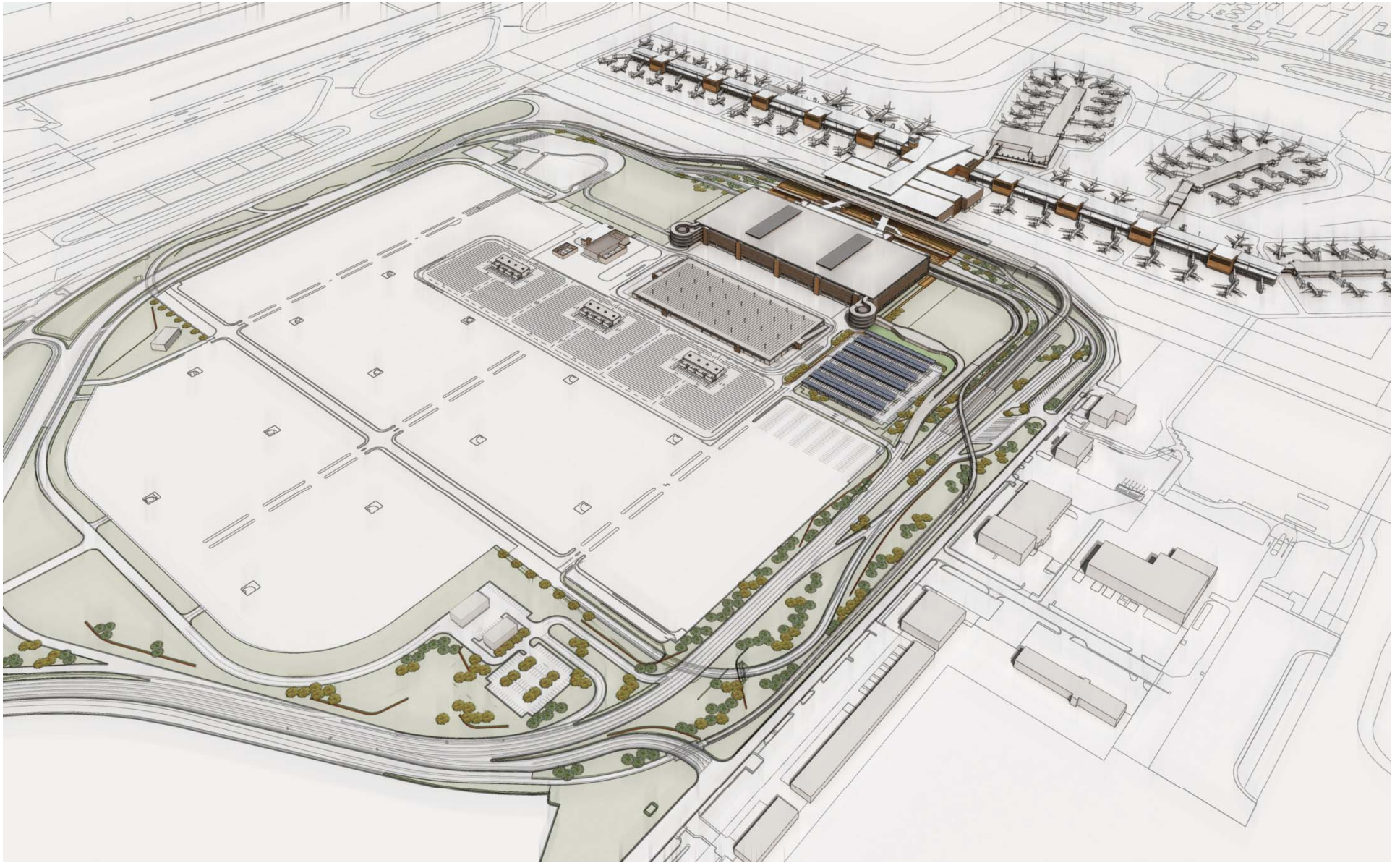


SLC Terminal Redevelopment Program



Salt Lake City International Airport

Terminal Redevelopment Program – Goals and Expectations

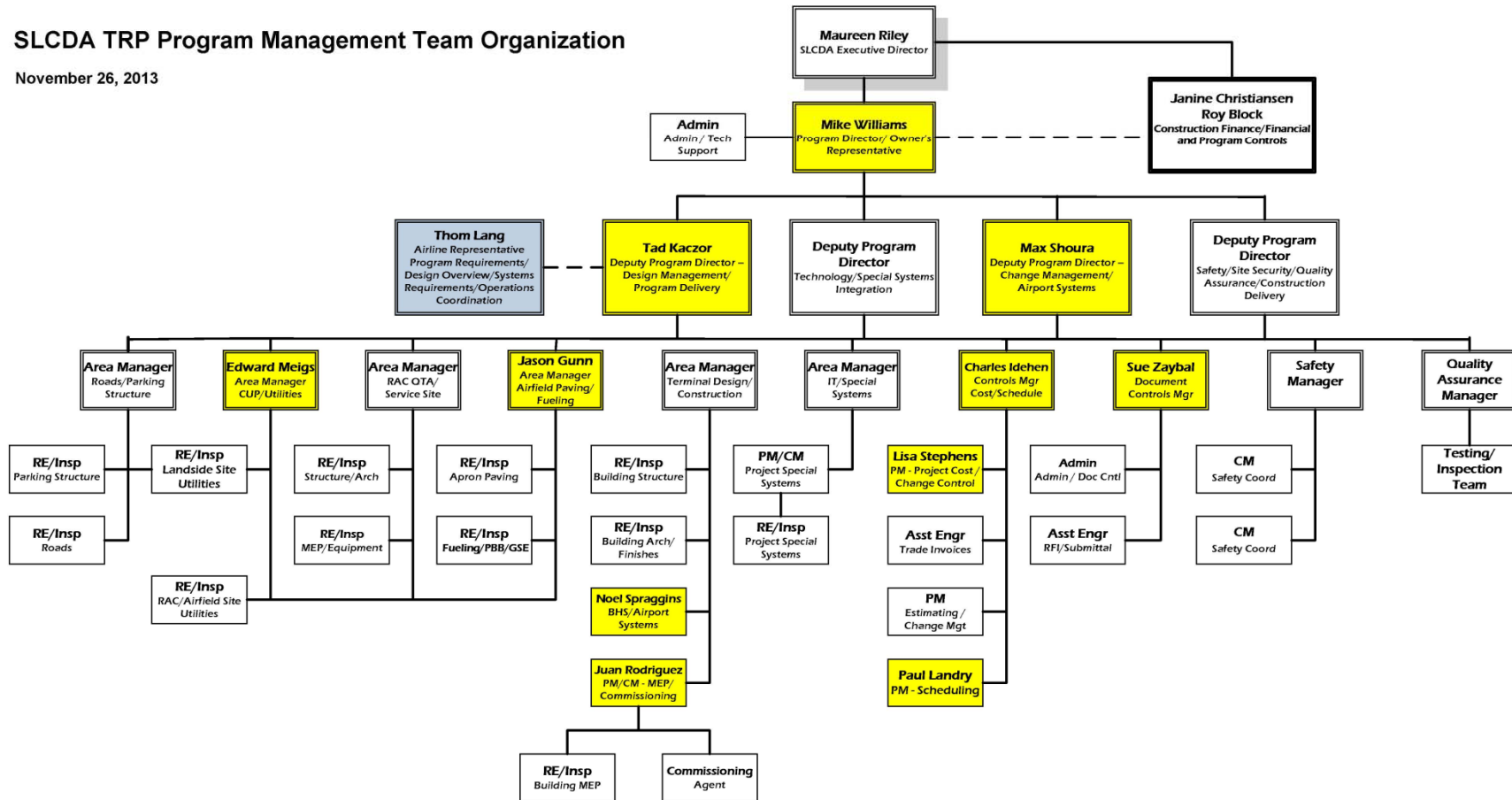
- **Address Seismic Risk**
- **Provide Right-Sized Facilities**
- **Solve Operational Problems**
- **Improve Customer Service**
- **Accommodate Growth**
- **Maintain Competitive Cost**
- **Phased Implementation (8 to 10+ years)**



TRP Project Team

SLCDA TRP Program Management Team Organization

November 26, 2013



Local Consultant & Trade Contractor Involvement

Associate Architects

MHTN Architects

GSBS Architects

FFKR Architects

Architectural Nexus

Mechanical/Electrical/Plumbing Engineers

Colvin Engineering + Envision

Van Boerum & Frank + Envision

Structural Engineers

Dunn Associates

Reaveley Engineers

Civil Engineers

URS + J.U.B

CH2MHill + Horrocks + RB&G

CDM Smith

Horrocks Engineers

Cost Estimating

Parametrix, Inc.

Future Trade Contractor Work

Sitework

Concrete

Steel

Mechanical

Electrical

Plumbing

Fire Protection

Building & Security

Drywall

Woodwork

Stone Walls & Floors

Paint & Wall Coverings

Signage



Project Timetable

2012	Complete Environmental Assessment; Finalize plan of execution
2013	Conduct Public Outreach, Initiate Schematic Design
2013	Select Construction Manager at Risk
2014	Begin construction of Rental Car Service Facilities (complete in 2015)
2016	Begin construction of South Concourse (West) and Terminal
2017	Begin construction of New Parking Garage
2018	Begin construction of Terminal Roadway System
2019	Open Terminal, South Concourse (West), and New Parking Garage
2019	Demolish Terminals 1 & 2 and Existing Parking Garage Begin construction of South Concourse (East)
2021	Occupy gates on south side of South Concourse (East)
2022	Demolish existing connectors Construct apron on north side of South Concourse (East)
2023	Occupy gates on north side of South Concourse (East)
2023	Decision Point – Renovate Concourses B, C, & D or Proceed Phase 2



Design Timeline

2013 – 2015



Public Outreach 2013

- **Reflect natural surroundings**
 - Bring the outdoors in
 - Wood, red rock, granite
 - Stone, glass, copper
- **Windows and natural light**
 - Views of the mountains
 - Tall walls and huge windows
- **Color and light of Utah**
 - Bright, airy, light
 - Warm colors
 - Sage green, rust, sky blues
 - Lavender, sunset colors
- **Technology**
 - Electric outlets
 - USB ports
 - Free Wi-Fi
- **Convenience**
 - Rental cars accessible
 - Close-in parking
 - Light rail access
 - Efficient check-in
- **More space and comfort**
 - Larger restroom stalls
 - Large meet and greet areas
 - Larger screening areas
 - Wide moving walkways
 - More concession options
 - Variety of seating options
 - Quiet seating areas

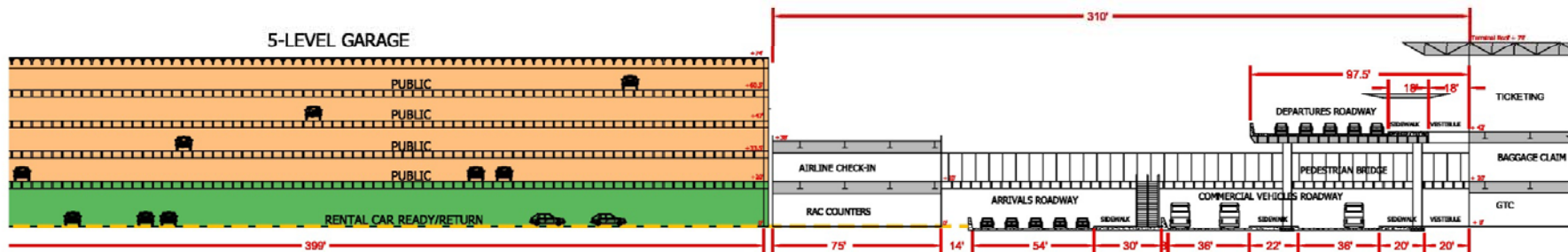


Design Themes

- **Natural integration of structures**
- **Sense of place**
- **Shorter walking distances**
- **Easy wayfinding**
- **Use of surrounding elements**
- **Best practices in sustainability**
- **Operational efficiency and passenger convenience**



Terminal cross section



Parking garage

- Floor 1 - 1200 rental cars
- Floors 2-5 - parking for 3600 vehicles

Gateway Center and Pedestrian Bridge

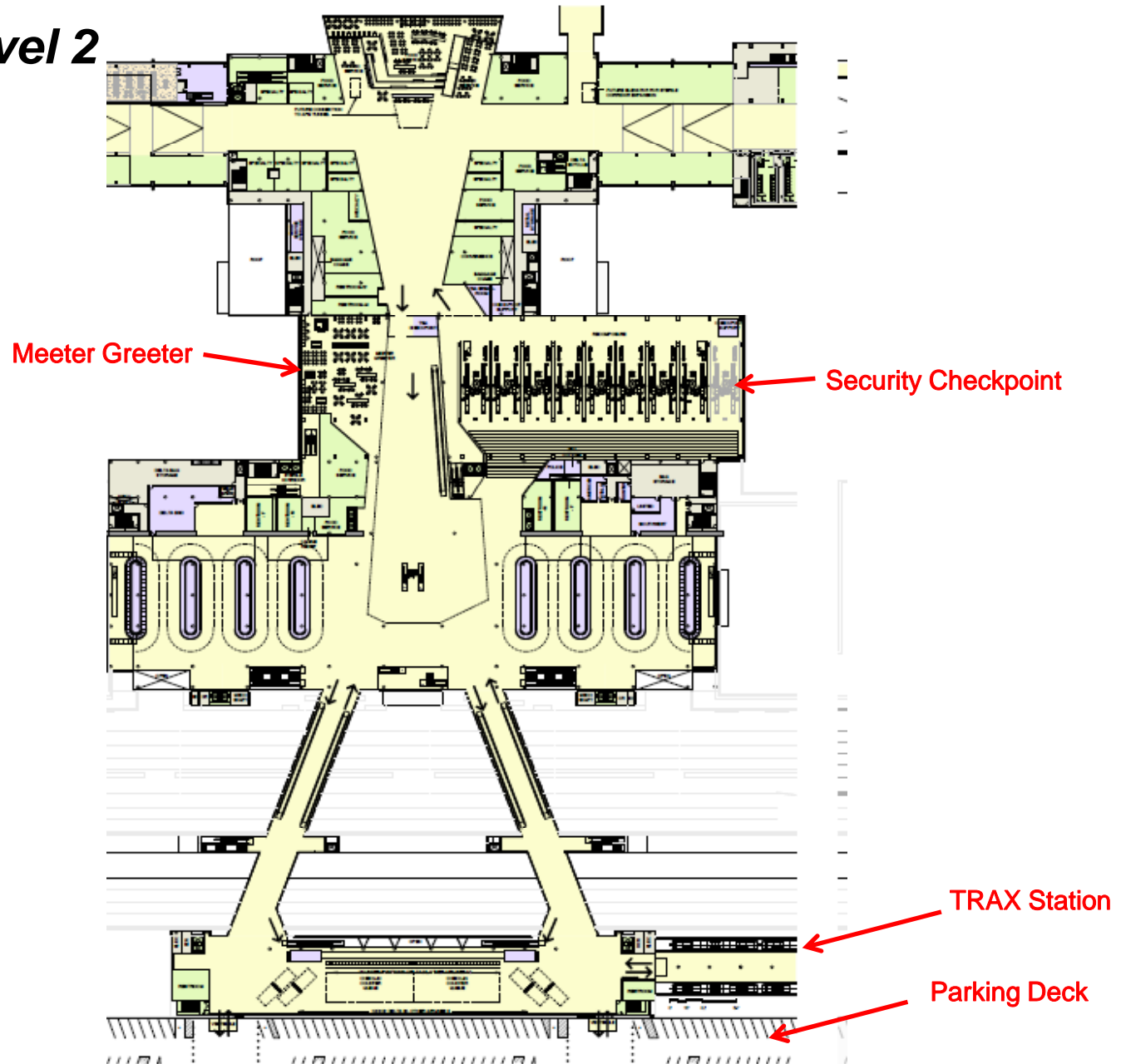
- Rental car check-in
- Gateway center for remote check-in

Terminal

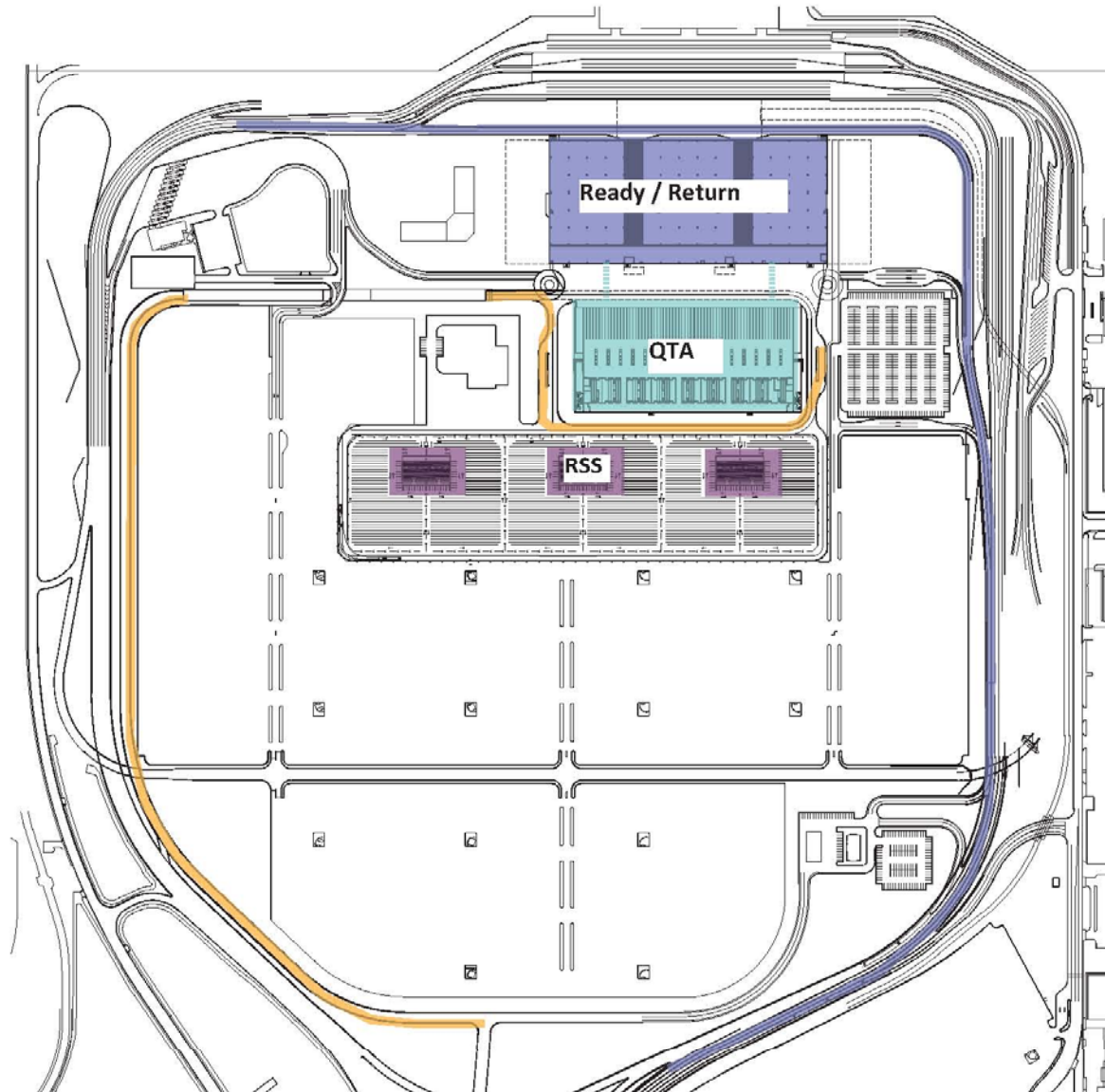
- 3 levels served by 2-level roadway



Terminal Level 2



Landside facilities



LEED and Sustainable Drivers



- **LEED Silver minimum for TRP LEED Scope**
- **Sustainable best practices in all TRP projects**
- **Anticipate future facility enhancements**
- **Aligned with Salt Lake City emissions reduction goals**
 - **Energy and atmosphere aggressive reduction target 30%**
 - **Building envelope design**
 - **High performance HVAC**
 - **Central Plant efficiency, resilience and redundancy**
 - **Lighting - 25% LPD reduction**
 - **Focus on large process loads**
 - **Systems commissioning**
 - **On site renewable options**
 - **Greenhouse gas emissions considerations**



Next Steps

- **Energy modeling study and recommendations**
- **Oversize baggage evaluation**
- **Passenger (PAX) simulation**
- **Structural threat assessment**
- **Systems integration planning**



Current Terminal Redevelopment Plan – Phase 1

