



WELCOME

SOUTHERN INFRASTRUCTURE IMPROVEMENTS

Salt Lake City International Airport Public Meeting

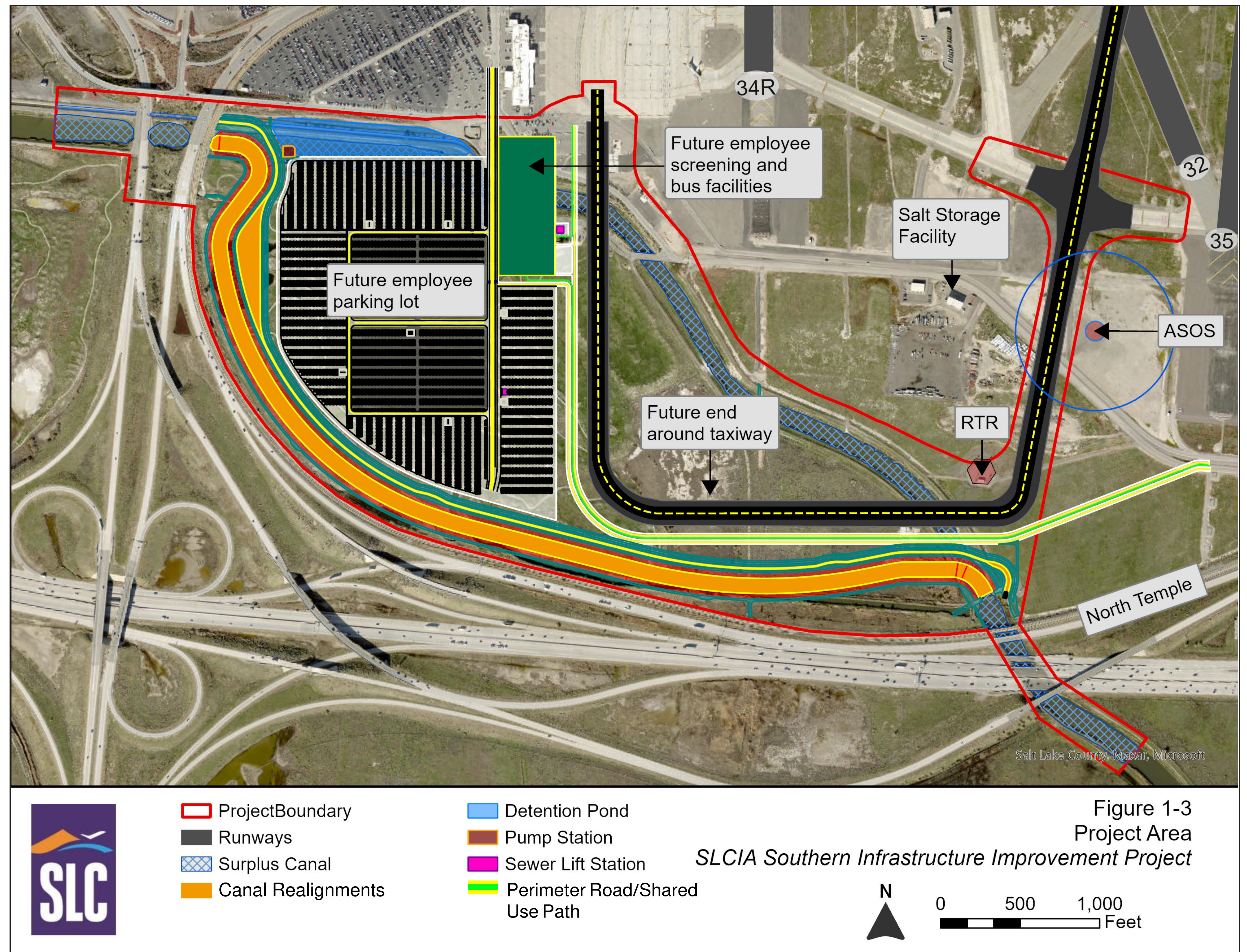
August 27 | 5:00–7:00PM

Southern Infrastructure Improvements

Salt Lake City International Airport



PROJECT OVERVIEW



Southern Infrastructure Improvements

Salt Lake City International Airport



PROJECT PURPOSE AND NEED



**Improve Airfield
Circulation**



**Accommodate
Existing and Future
Parking Needs**



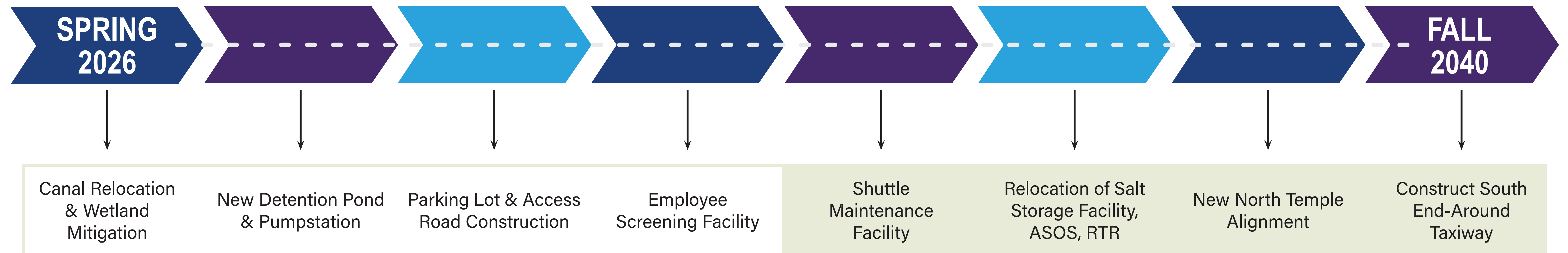
**Provide a Separate
Screening Facility for
Airport Employees
and Tenants**

Southern Infrastructure Improvements

Salt Lake City International Airport



PROJECT SCHEDULE AND ELEMENTS



Southern Infrastructure Improvements

Salt Lake City International Airport



ALTERNATIVES

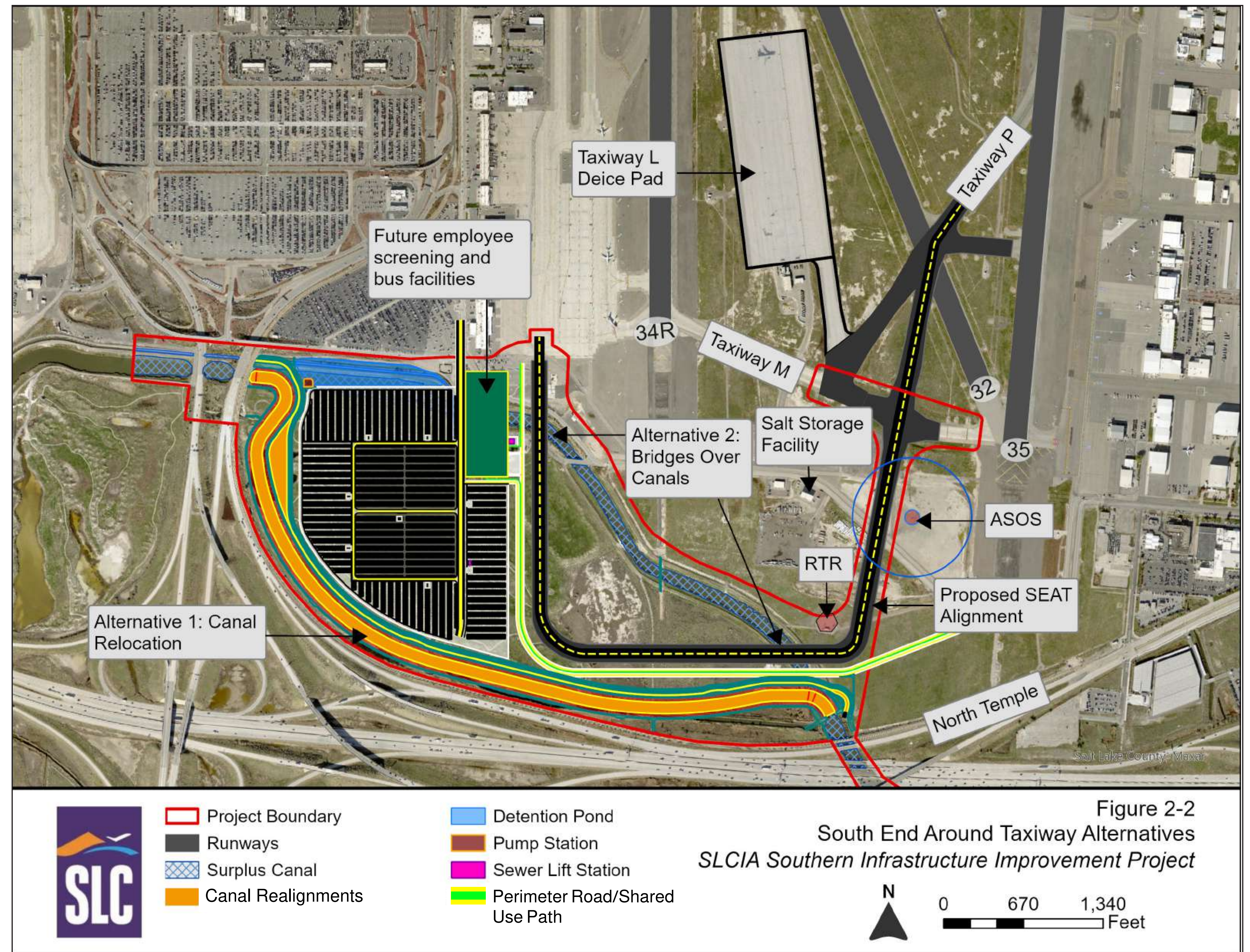
TYPE OF ALTERNATIVE	ALTERNATIVE DESCRIPTION
Improve airfield circulation	<ul style="list-style-type: none">▪ Construct SEAT and relocate Surplus and North Point canals▪ Construct SEAT with bridges over Surplus and North Point canals
Parking and security screening	<ul style="list-style-type: none">▪ Construct a single south lot without relocating Surplus and North Point canals and construct a security screening facility▪ Construct a single south lot, relocate the Surplus and North Point canals, and construct a security screening facility▪ Construct north and south lots without relocating the Surplus and North Point canals and construct a security screening facility at the south lot
No-Action	<ul style="list-style-type: none">▪ Retained for analysis pursuant to FAA Order 1050.1G

Southern Infrastructure Improvements

Salt Lake City International Airport



IMPROVE AIRFIELD CIRCULATION

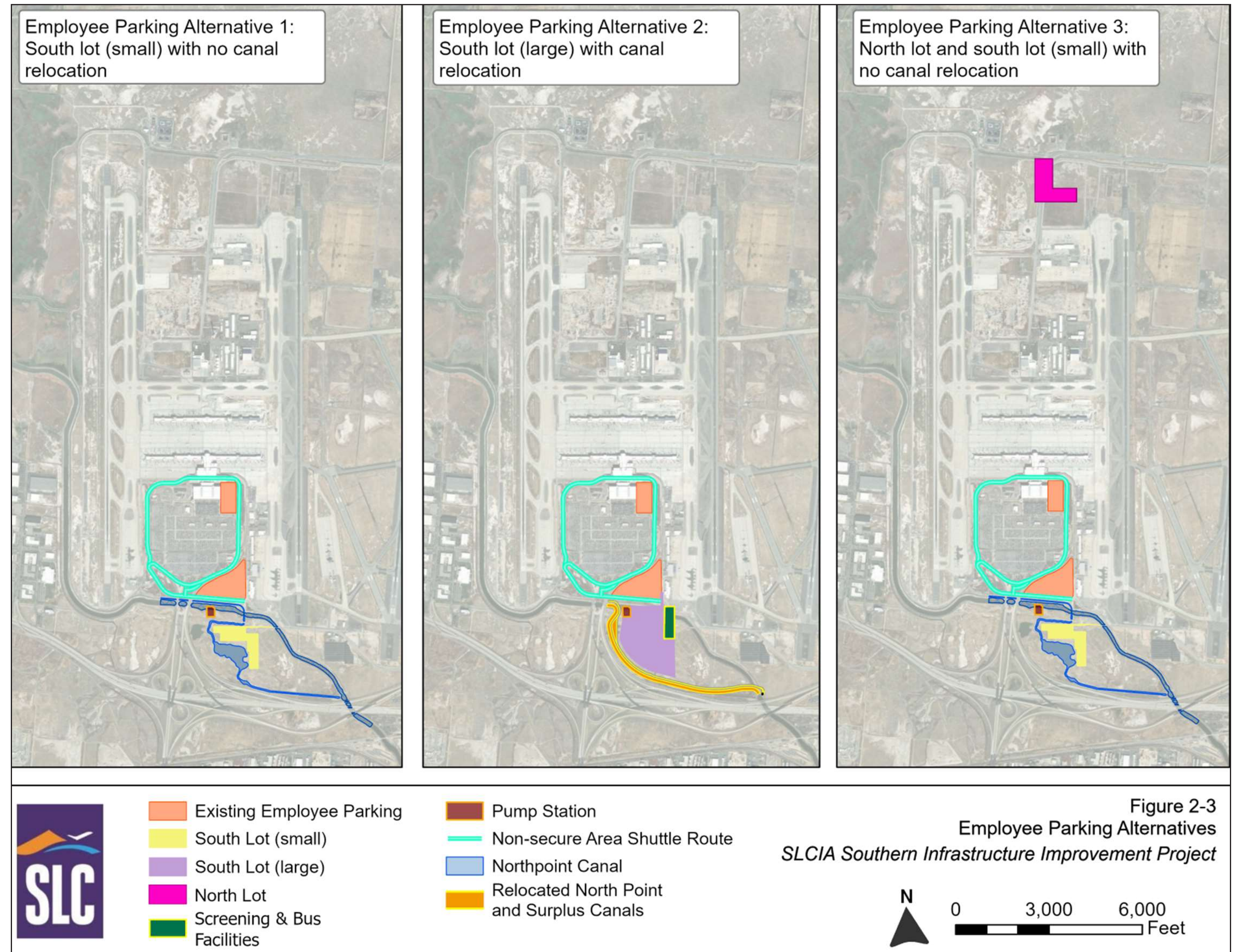


Southern Infrastructure Improvements

Salt Lake City International Airport



PARKING AND SECURITY SCREENING

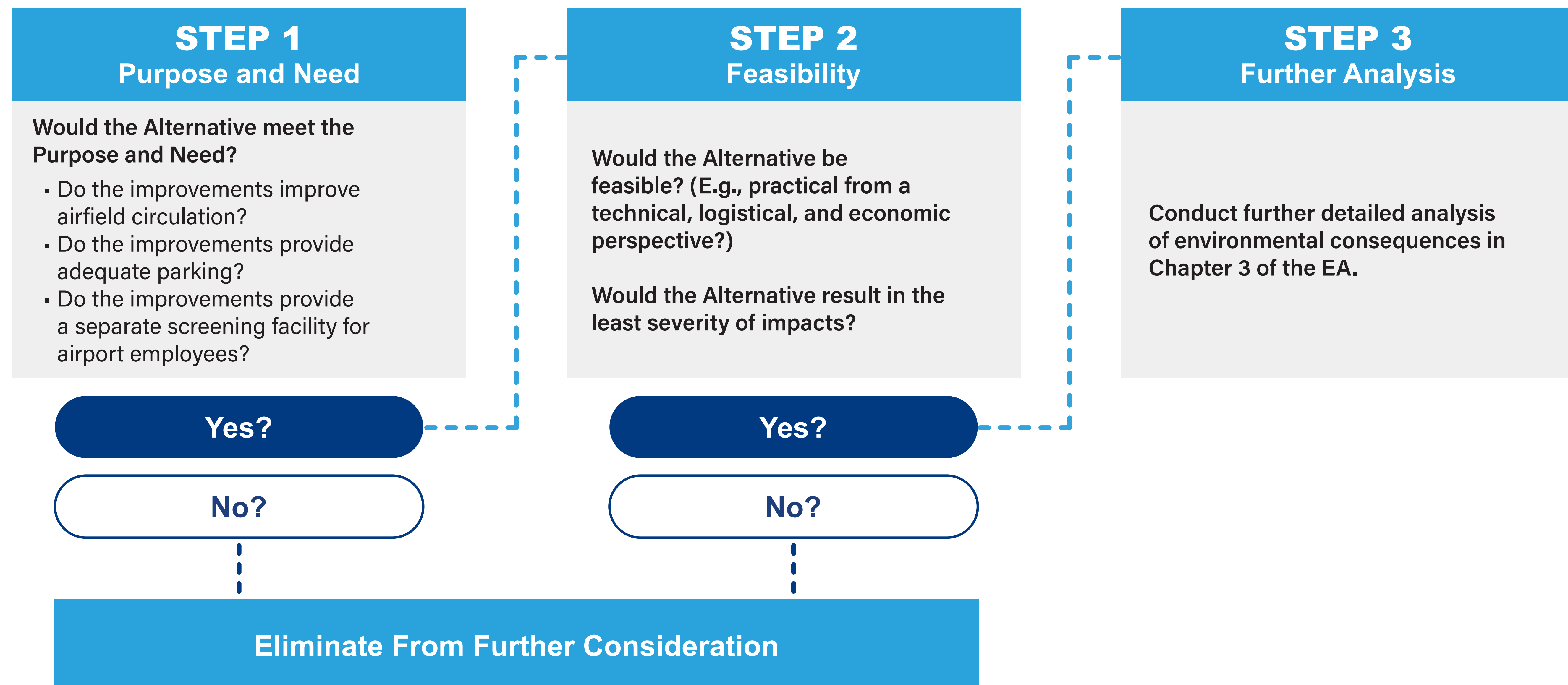


Southern Infrastructure Improvements

Salt Lake City International Airport



ALTERNATIVE SCREENING PROCESS



Southern Infrastructure Improvements

Salt Lake City International Airport



ALTERNATIVES

	DOES ALTERNATIVE PASS TO NEXT STEP?		RETAIN FOR ANALYSIS IN THE EA?
	STEP 1	STEP 2	
Improve Airfield Circulation			
SEAT Alternative 1	Yes	Yes	Yes
SEAT Alternative 2	No		No
Parking			
Parking Alternative 1	No		No
Parking Alternative 2	Yes	Yes	Yes
Parking Alternative 3	No		No
No Action Alternative	No	No	Yes

Southern Infrastructure Improvements

Salt Lake City International Airport



ENVIRONMENTAL CONSEQUENCES

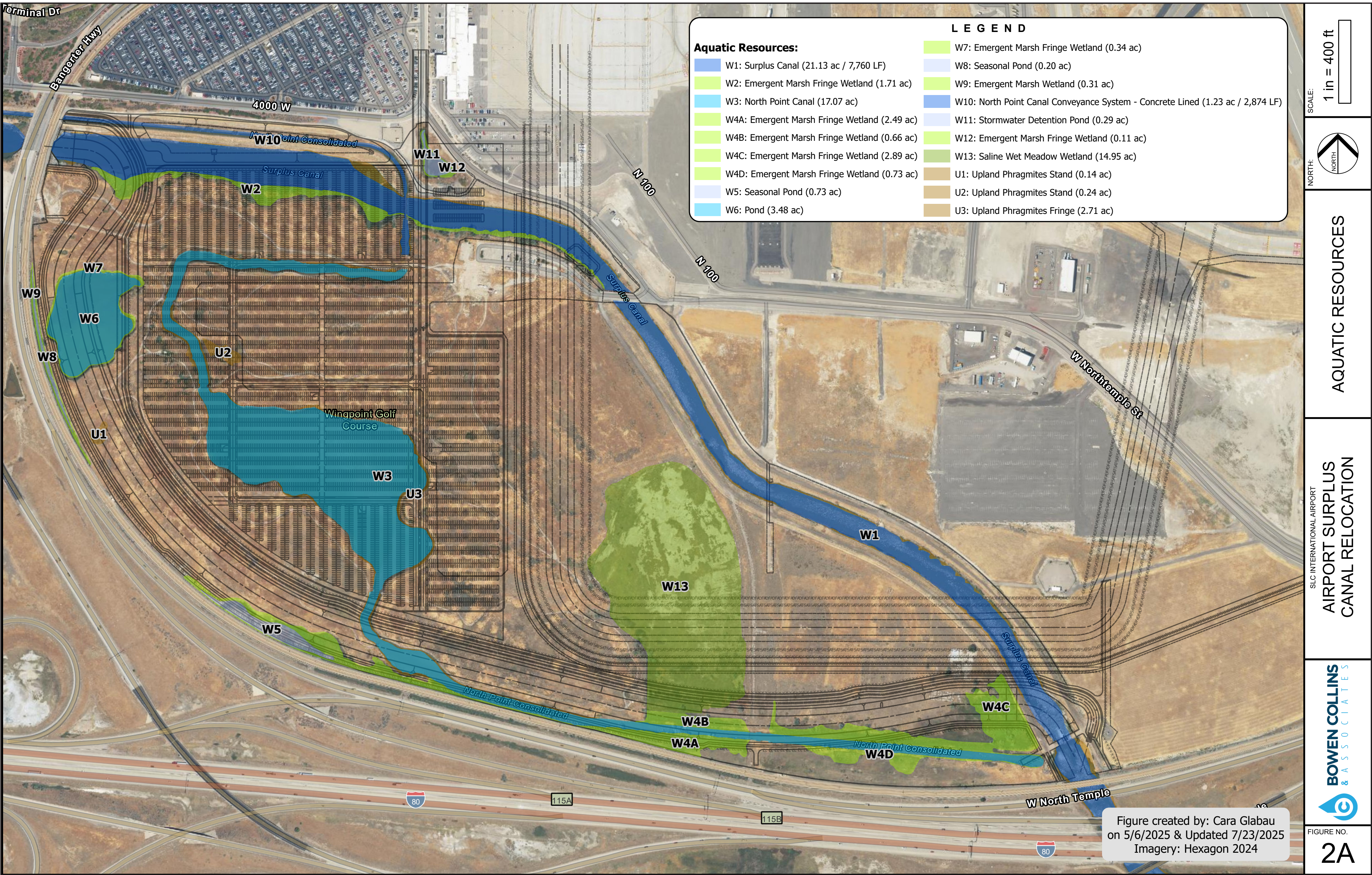
	SEAT ALTERNATIVE 1/PARKING ALTERNATIVE 2	NO-ACTION ALTERNATIVE
Aviation Emissions and Air Quality	No reasonably foreseeable significant impact	No impact
Biological Resources	No reasonably foreseeable significant impact	No impact
Hazardous Materials, Pollution Prevention, and Solid Waste	No reasonably foreseeable significant impact Solid waste would be generated during construction and increased operations and enplanements. Waste would be handled and disposed of according to federal, state, and local rules and regulations	No impact
Historic, Architectural, Archaeological, and Cultural Resources	No reasonably foreseeable impact	No impact
Land Use	No reasonably foreseeable impact	No impact
Natural Resources and Energy Supply	No reasonably foreseeable impact	No impact
Socioeconomic Impacts and Children's Environmental Health and Safety Risks	No reasonably foreseeable impact	No impact
Visual Effects	No reasonably foreseeable impact	No impact
Water Resources	<ul style="list-style-type: none">▪ Surface Water: Impacts are expected; however, implementation of the Proposed Action would not result in a reasonably foreseeable impact as all impacts will be mitigated.▪ Floodplain: No reasonably foreseeable significant impact following temporary and mitigated construction impacts▪ Groundwater: No reasonably foreseeable impact, groundwater may need to be treated per State requirements.▪ Wetlands: Impacts are expected; however, implementation of the Proposed Action would not result in a reasonably foreseeable impact as all impacts will be mitigated.	<ul style="list-style-type: none">▪ Surface Water: No impact▪ Floodplain: No impact▪ Groundwater: No impact▪ Wetlands: No Impact

Southern Infrastructure Improvements

Salt Lake City International Airport



WETLAND DELINEATION



Southern Infrastructure Improvements

Salt Lake City International Airport



SUBMIT A COMMENT

We are seeking input on the Draft Environmental Assessment (EA). All comments will become part of the official record.

How to Comment

- Paper form – Complete a comment card and place in the designated box
- Online – bit.ly/SLCAirportSouthernImprovements
- Email – airportinfo@slc.gov
- Mail – Postmarked by September 18, 2025 to:

SLC Airport EA – c/o The Langdon Group
392 E Winchester St., Ste. 300
Salt Lake City, UT 84107

Comment Deadline: September 18, 2025