



Remembering Mike Williams



The SLC Airport lost a beloved member of the family on May 12, when Mike Williams passed away. Mike joined the Salt Lake City Department of Airports' Redevelopment Program (ARP) as Program Director in November 2012 and was dedicated to the program from the beginning.

Mike had an impressive 40 years of experience in the field of project management, many in airport development. Prior to moving to Salt Lake for the ARP, Mike served as the Project Executive on the \$1.4 billion Maynard

Holbrook Jackson, Jr. International Terminal at Hartsfield-Jackson Atlanta International Airport and as Delta Air Lines' Project Executive on the \$508 million Terminal 'A' Redevelopment at Boston Logan International Airport.

Many at SLC worked with and alongside Mike and experienced his gift for project management and his great attention to detail. Mike led numerous ARP tours for the public over the years; a testament to his deep passion and commitment to The New SLC.

Mike will be greatly missed and SLCDA is grateful for his incredible friendship and leadership.

Click the button below to view a photo album remembering Mike.

[View Mike's memorial photo album](#)

Sensory Room Unveiled

The first of three Sensory Rooms opened on March 5 at SLC International Airport.

Designed by KultureCity and their medical professionals, the sensory room provides a quiet space for all passengers with sensory needs.

The first room—located on Concourse A-west—is equipped with bean bags, visual

light panels, activity panels, air walls and ADA seating. Two additional sensory rooms will open in Concourse B over the next year.



Sensory Room Opening

Airport Art Installations Receive Accolades



Artist Gordon Huether was named #1 on the CODAworx list of Top 50 Public Art Stars. CODAworx is the hub for the international public art economy.

The airport is home to a number of Huether's large-scale art installations.

- The Canyon
- Benches and Column Plates
- The Falls
- Northern Light (pictured right)
- The Peaks
- The River Tunnel

Learn more about SLC's art program [here](#).

Airport Hits a New High in 2024

SLC hit a new high with a 5.2 percent increase in passengers reported during 2024.

From January 1 through December 31, 2024, the airport recorded 28,364,610 passengers. This surpasses the previous record of 26,952,754 passengers in 2023. The growth can be attributed primarily to an increase in the number of domestic passengers, which totaled 26,993,022 in 2024 compared to the previous high of 25,629,460 in 2023. The number of international passengers totaled 1,371,588 in 2024, compared to 1,323,294 in 2023.

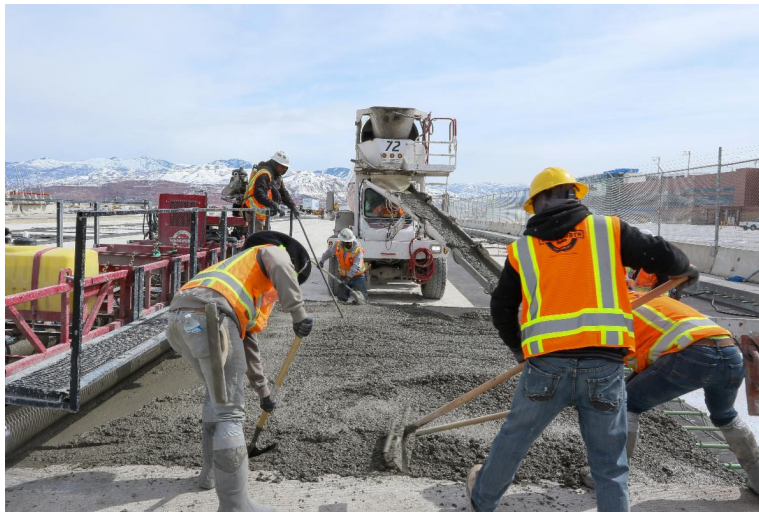


The New SLC Construction Update

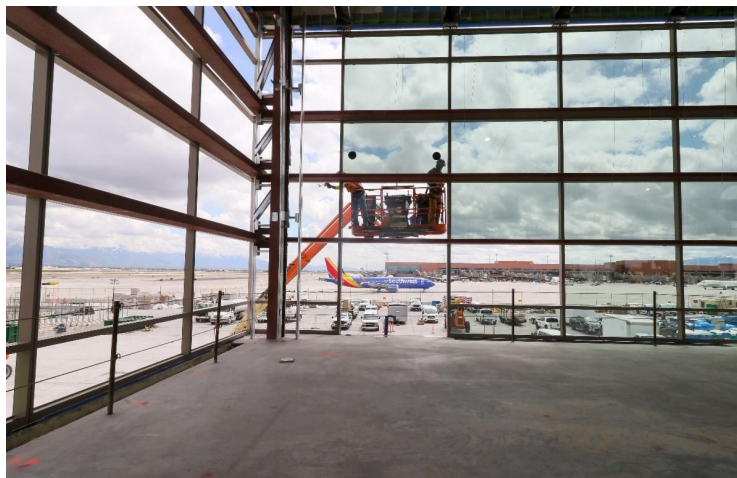
Aerial view of Concourse B-east extension



Concrete Paving Moves Forward at a Clip



Concourse B-east Curtain Wall Install



Interior of Concourse B-east



For more updates on construction progress, [click here](#).

For more info...

Previous editions of The New SLC newsletter are available [here](#).

For updates on the construction progress, visit the website [here](#) or follow us on [X](#), [Facebook](#), [Instagram](#), [LinkedIn](#) and [YouTube](#).

Follow SLC on Social Media



Salt Lake City International Airport | 3920 West Terminal Drive | Salt Lake City, UT 84122
US

[Unsubscribe](#) | [Update Profile](#) | [Constant Contact Data Notice](#)



Try email marketing for free today!