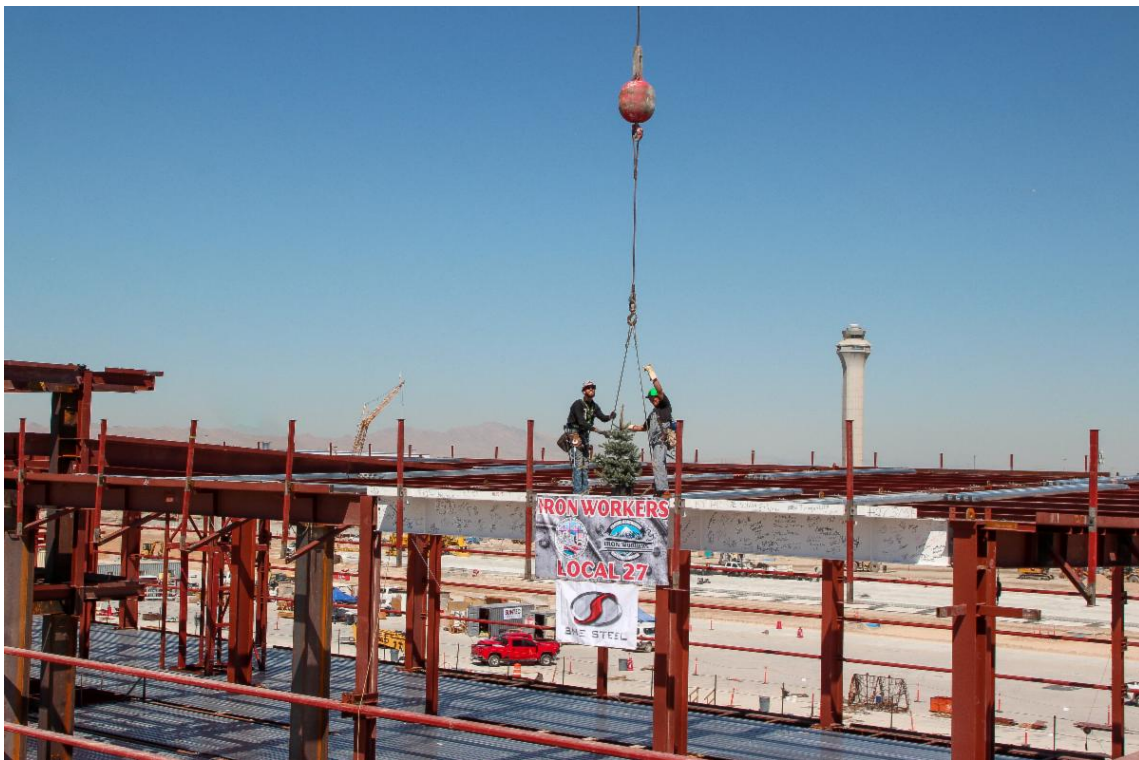


THE NEW SLC

AIRPORT REDEVELOPMENT PROGRAM

PHASE 3 COMING IN 2024

Phase 4 Topping Out



On August 27, the last steel beam for Phase 4 of The New SLC was placed on top of Concourse B-east. As the fifth and final topping out ceremony for the Airport Redevelopment Program, this event held a special significance. Phase 4 includes the build out of 16 additional gates to the east of Concourse B, along with more shops and restaurants. Enjoy the following video of the event.

[Topping Out Video](#)

Phase 4 Concessions Announced

The concession operators selected for the 20,723 sq. ft. of space are Hudson by



Salt Lake City International Airport announced the final 12 restaurants and retail shops selected for The New SLC-Phase 4, with planned opening dates of fall 2025 and 2026. These are the final concessions selected as part of The New SLC Redevelopment Program.

Avolta, At SLC Concessions JV, OHM Concession Group, Paradies Lagardère, SSP America and Tugals, which represent the following brands and concepts:

Food and Beverage: Aubergine Kitchen; Einstein Bros. Bagels; Moab Brewery; Monarca; Moochie's Meatballs and More; Mr. Charlie's Chicken Fingers; Swig. *

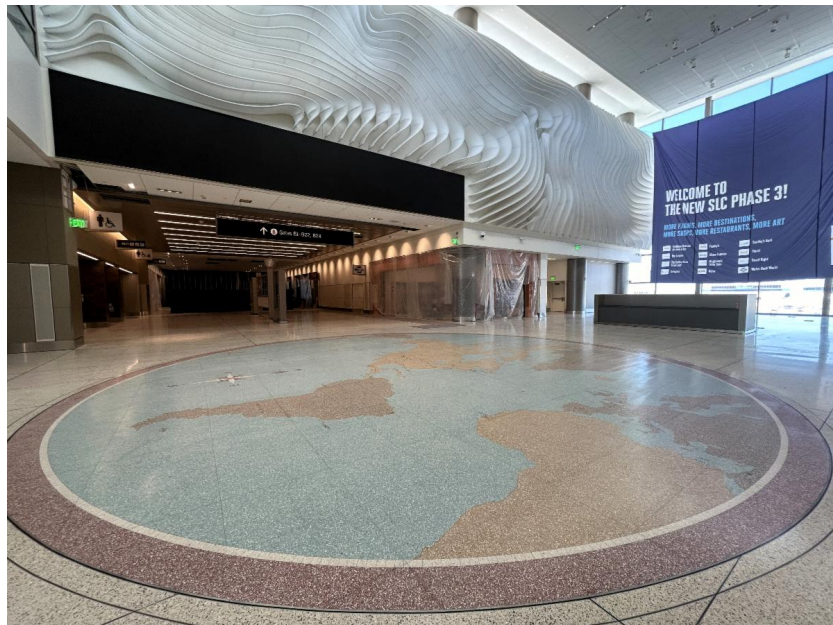
Retail, News and Gift: Art of Aesthetics; Good Earth Markets; Hudson; &Go; Utah National Parks. *

Art of Aesthetics, Aubergine Kitchen, Good Earth Markets, Moab Brewery, Monarca, Moochie's Meatballs and More, Mr. Charlie's Chicken Fingers and Swig are all local brands.

[Click here to watch a video highlighting the new brands.](#)

[Phase 4 Concessions](#)

Airport Saves The World Map



The World Map graced the floor of Terminal 1 in the former airport for 60 years. It was created from a design by Dallas stoneworker Julius Bartoli based on drawings by Ashton, Evans & Brazier. The World Map was a source of delight and wonder for thousands of people from all over the world for many years.

Initially, the engineers did not think it was possible to remove the World Map without damaging the pieces, but after further research found it was possible.

The World Map was removed from Terminal 1 prior to demolition and has been in storage until recently when it was reinstalled in Concourse B Plaza. The World Map will be open to the public when Phase 3 opens on October 22, 2024.

AmEx Plans Centurion Lounge for Phase 4



On August 14, American Express announced plans to open a Centurion® Lounge at Salt Lake City International Airport. American Express is the first credit card issuer to announce plans to open a proprietary lounge at SLC.

Inspired by Utah's breathtaking topography, the nearly 16,000 square foot lounge will give eligible Card Members a place to relax, work and enjoy a delicious meal before boarding their flight, an outdoor terrace with views of the Wasatch Mountains, a full bar with alcoholic and non-alcoholic beverages, a full-service coffee bar featuring beans from a local roaster, a dedicated wellness room, and other signature Centurion Lounge amenities.

The new lounge is scheduled to open in the Concourse B in 2025 as part of The New SLC Airport Phase 4.

SLC Ranks Eighth World Wide



AirHelp has released a report about the top 10 airports in the world based on customer service, on-time performance, and food & shops. SLC ranked first out of all North American airports overall and specifically for on-time performance.

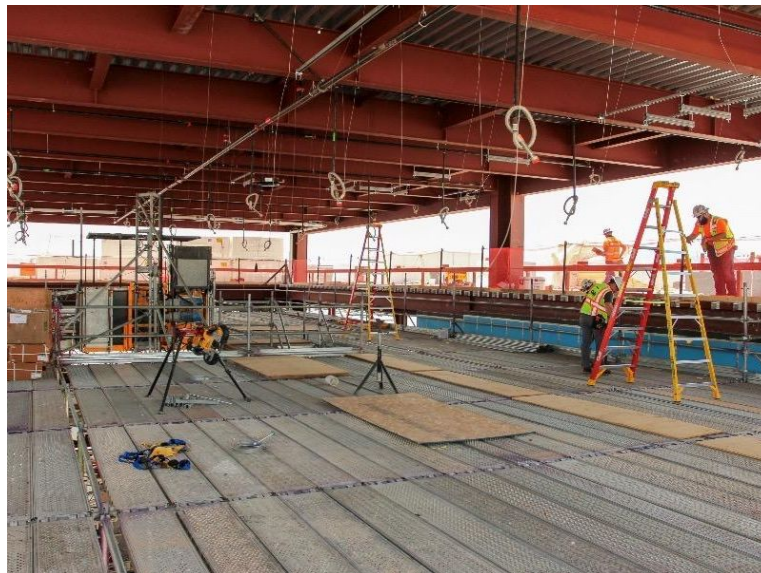
World-wide, SLC ranked 8th overall and 6th for on-time performance. Read

The New SLC Construction Update

Construction of The New SLC-Phase 3 is nearing the finish line! The Central Tunnel, Concourse B Plaza, five gates and 12 more shops and restaurants will debut on Oct. 22, 2024. Phase 4 reached a major milestone in construction when the final steel beam was placed atop Concourse B. Here are some photos highlighting the work underway.



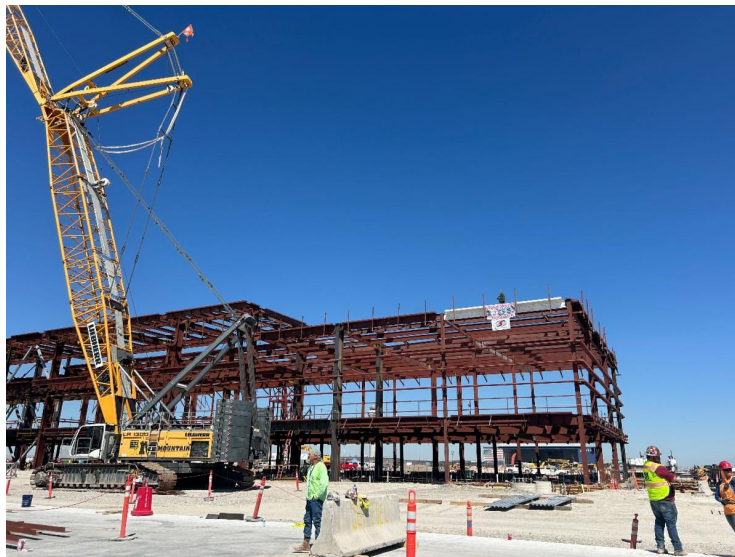
Installers put The Canyon 2.0 fins in place in preparation for the Phase 3 opening.



The build out of Concourse B-east continues.



Escalators leading from the Central Tunnel to the Concourse B Plaza are in place.



Phase 4 steel erection has been completed.

For more updates on construction progress, [click here](#).

For more info...

Previous editions of The New SLC newsletter are available [here](#).
For updates on the construction progress, visit the website [here](#) or follow us on [X](#),
[Facebook](#), [Instagram](#), [LinkedIn](#) and [YouTube](#).

Follow SLC on Social Media



Salt Lake City International Airport | 3920 W. Terminal Drive | Salt Lake City, UT 84122 US

[Unsubscribe](#) | [Update Profile](#) | [Constant Contact Data Notice](#)



Try email marketing for free today!