

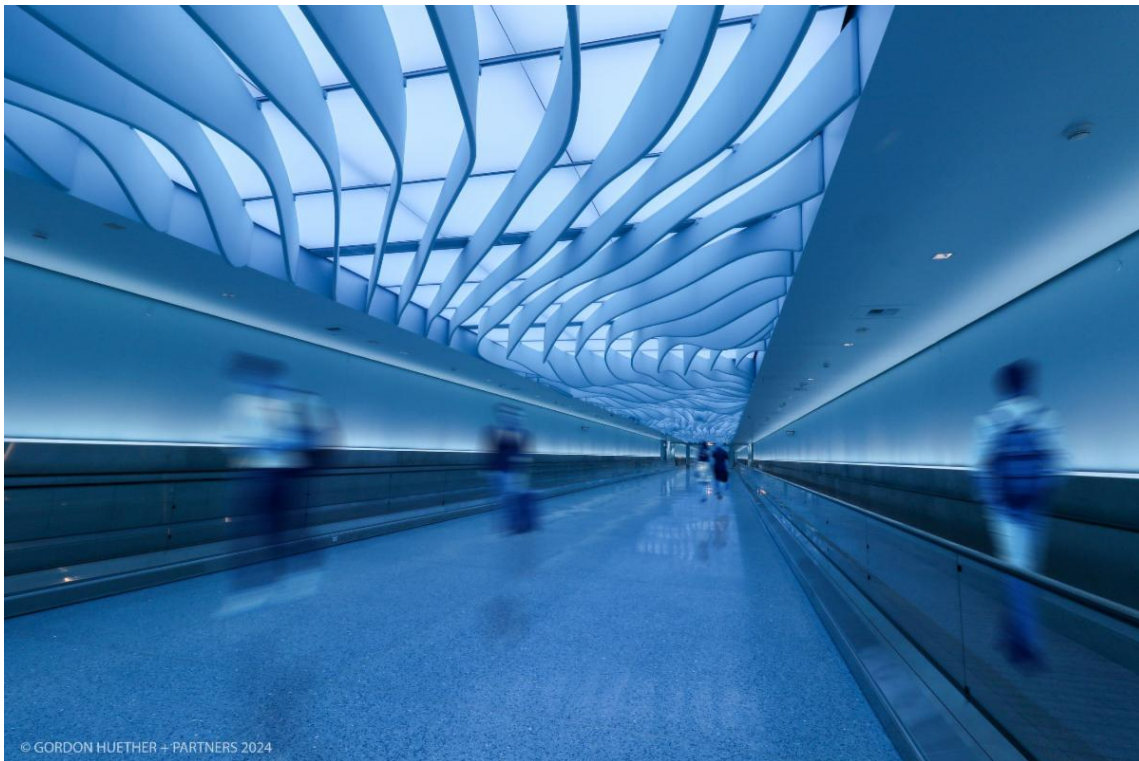
THE NEW SLC

AIRPORT REDEVELOPMENT PROGRAM

PHASE 3 COMING IN 2024

The New SLC Email Alert– Spring 2024

The River Tunnel Artwork is Complete



Installation of The River Tunnel art by Artist Gordon Huether is complete. The art installation is inspired by the beauty of Utah and reflects the rivers that flow through the state's mountains and canyons. The River Tunnel will visually link the art features in the Terminal and Concourses A and B to create a cohesive, congruous experience for passengers.

The New SLC a Boon to Utah Economy



A recent Economic Impact Analysis (EIA) completed by GSBS Consulting shows that The New SLC Airport Redevelopment Program (ARP) is a boon to the state's economy. The analysis focused on quantifying the economic benefit that the ARP will and does have on the state of Utah. The result was a benefit of \$1.99 for every construction dollar invested. Overall the \$5.1 billion ARP will result in a significant economic benefit of nearly \$9.8 billion. To read the report, go to www.slcairport.com/thenewslc.

2024 Airport Experience News: SLC Airport-Best Program Design

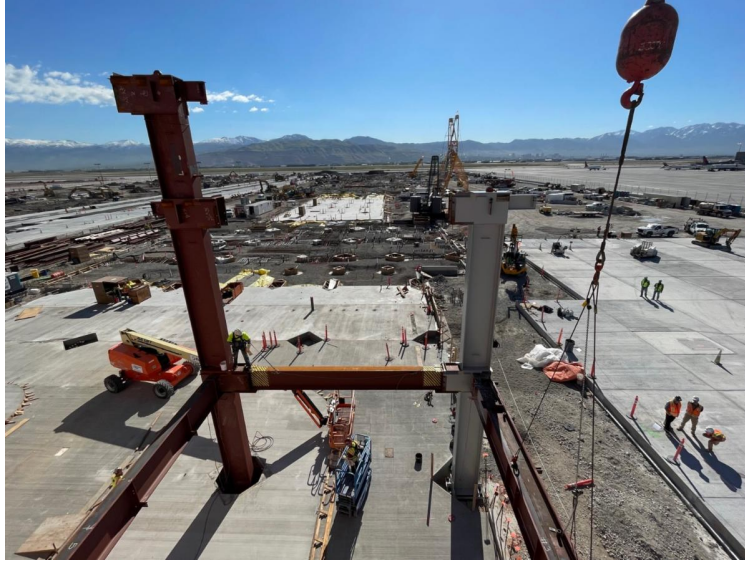
The New SLC Airport was recognized for "Airport with the Best Program Design," at the 2024 Airport Experience Conference, hosted by Airport Experience News.

The award is given to "a North American airport that features an engaging and visually stunning environment that exceptionally blends flow and function, with a design that distinguishes it from all others."



The New SLC Construction Update

Construction of The New SLC Phases 3 and 4 continues to move forward at a fast pace. Phase 3 debuts on Oct. 22, 2024, with the Central Tunnel, Concourse B Plaza, five gates, and 12 more shops and restaurants. Phase 4 is tracking close behind. The following photos highlight the work underway.



The first steel beam has been raised on Phase 4 of The New SLC. This phase will add 16 gates--for a total of 94 gates--to Concourse B-east by 2026.



Crews are out paving to prepare for planes to begin taxing when Phase 3 is complete.



Delivery and installation of the first passenger boarding bridge for Phase 3. Five gates will initially open in Oct. 2024, with four more gates to follow one year later.



Infrastructure work is underway to place the iconic World Map--formerly located in Terminal 1 of the legacy airport--in the Concourse B Plaza.

For more updates on construction progress, [click here](#).

For more info...

Previous editions of The New SLC newsletter are available [here](#).
For updates on the construction progress, visit the website [here](#) or follow us on [X](#), [Facebook](#), [Instagram](#), [LinkedIn](#) and [YouTube](#).

Follow SLC on Social Media



Salt Lake City International Airport | 3920 W. Terminal Drive, Salt Lake City, UT 84122

[Unsubscribe airportinfo@slcgov.com](mailto:unsubscribe@airportinfo@slcgov.com)

[Update Profile](#) | [Constant Contact Data Notice](#)

Sent by airportinfo@slcgov.com powered by



Try email marketing for free today!