

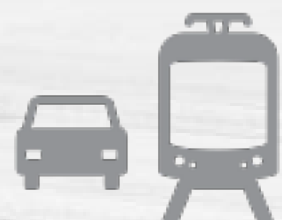


WRAPm 2023



MASTER PLANS AND ALL THINGS PLANNING GEEKS LOVE

10/16/23





Salt Lake City International Airport

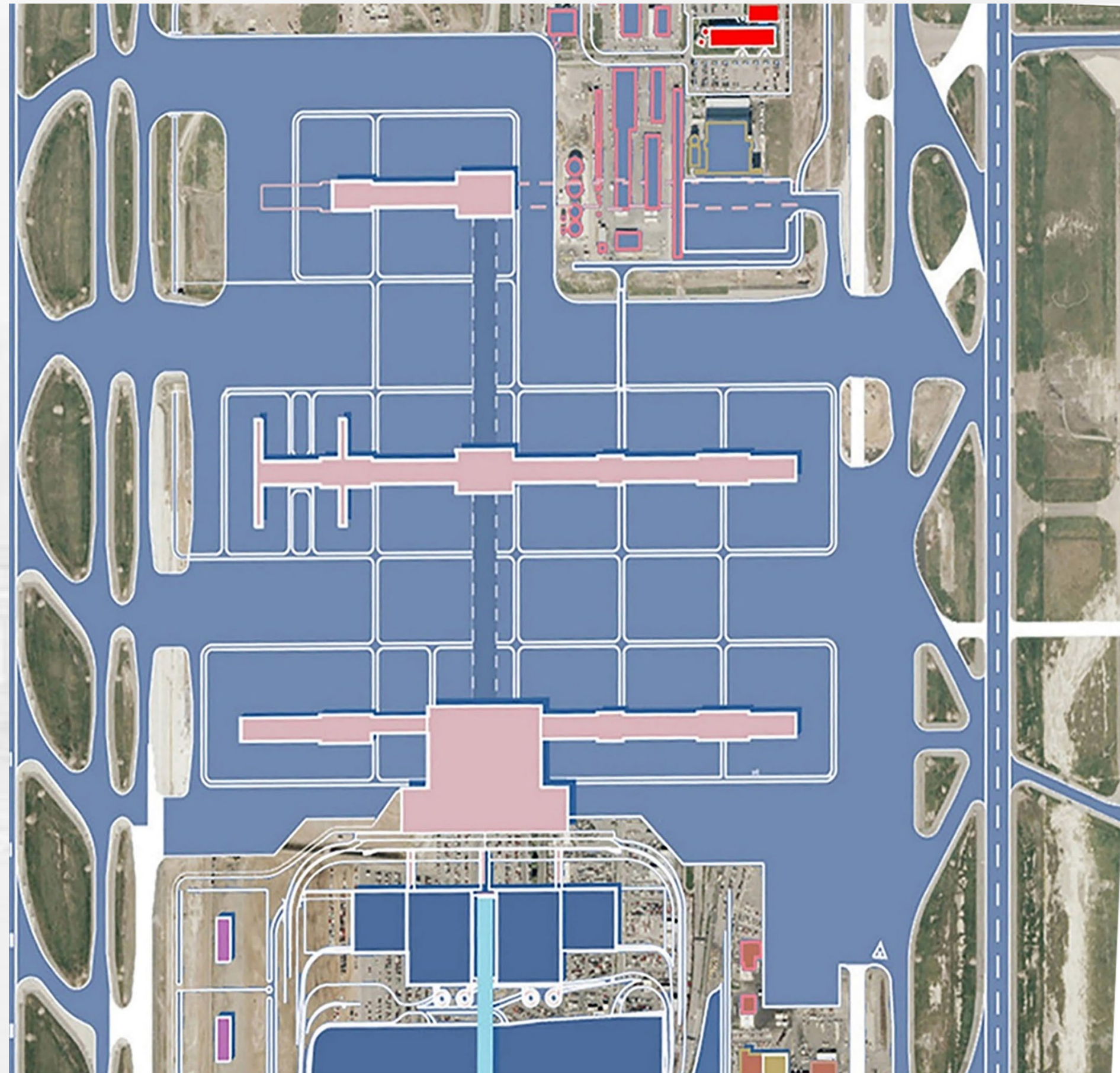
What is a Master Plan?



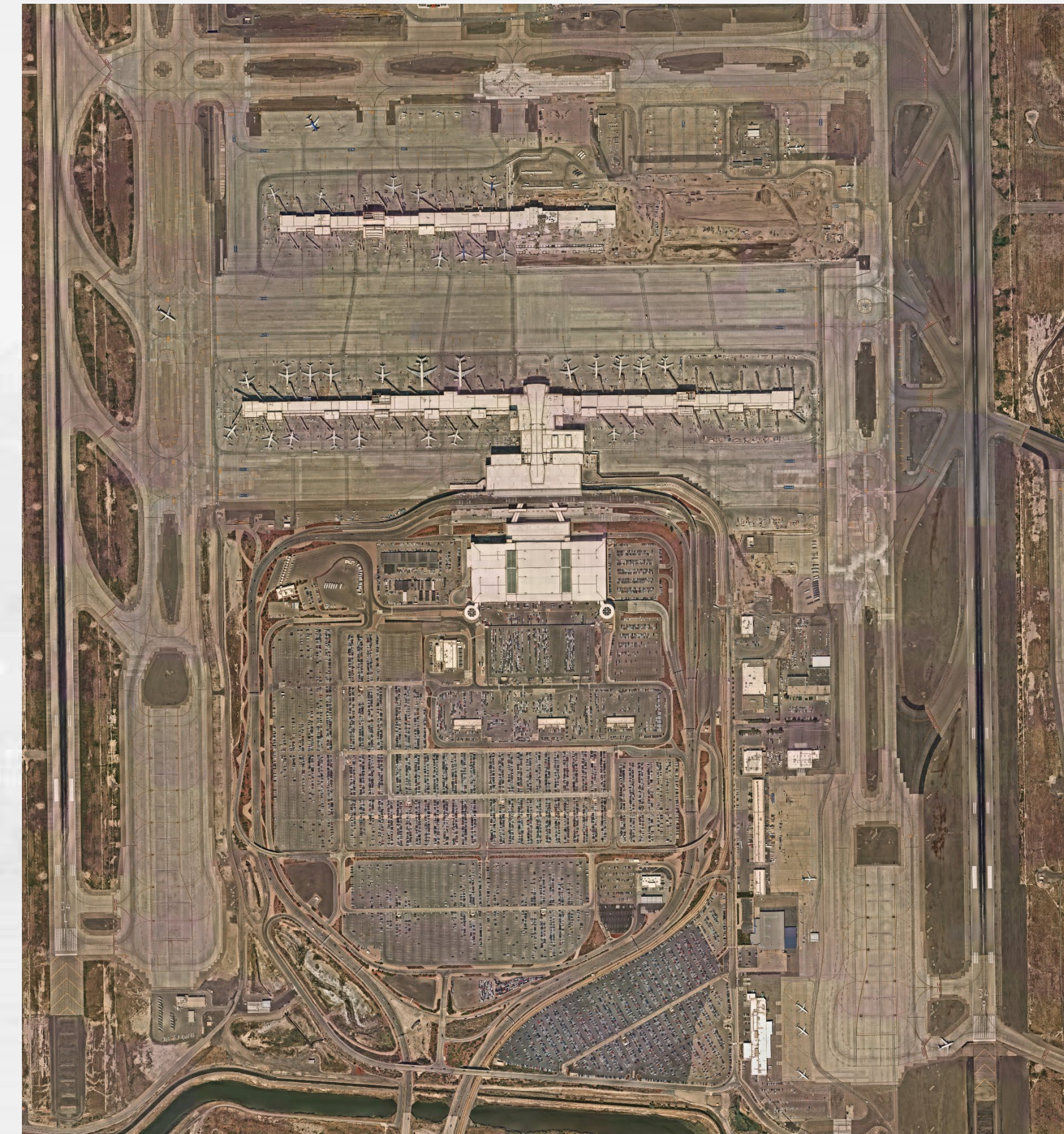
“An airport master plan is a comprehensive study of an airport and usually describes the short-, medium-, and long- term development plans to meet future aviation demand.”

-FAA Advisory Circular 150/5070-6B Airport Master Plans

Introduction

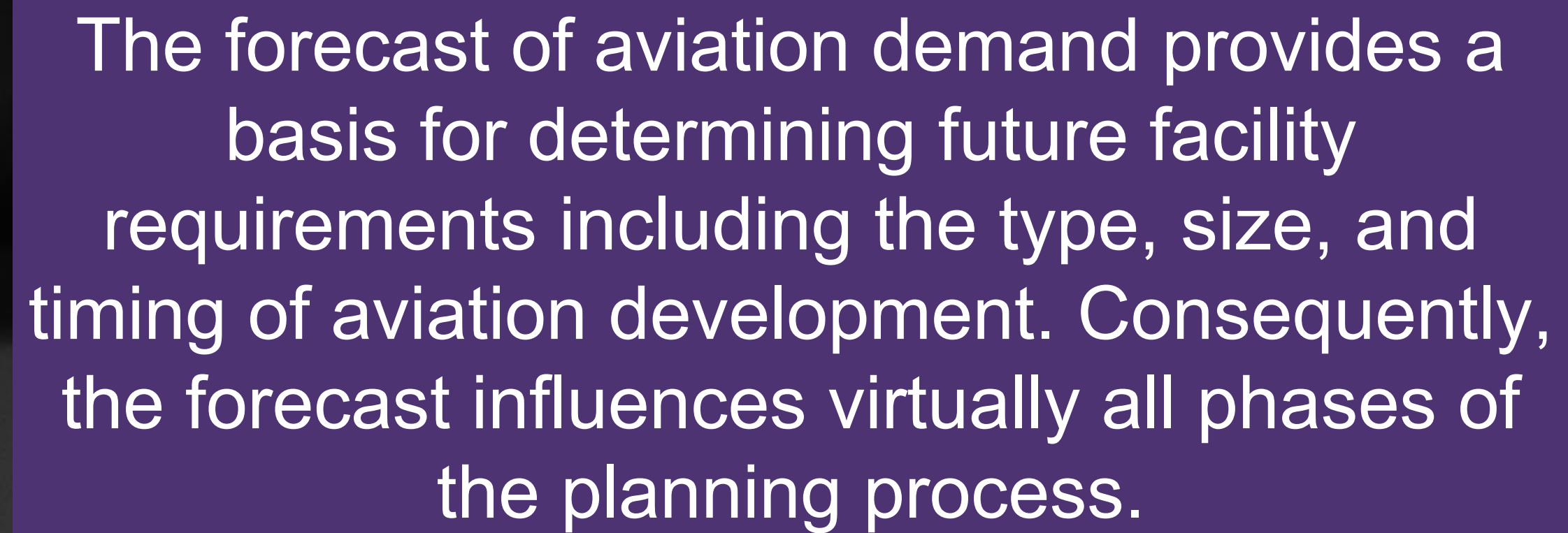


1998 Master Plan Vision



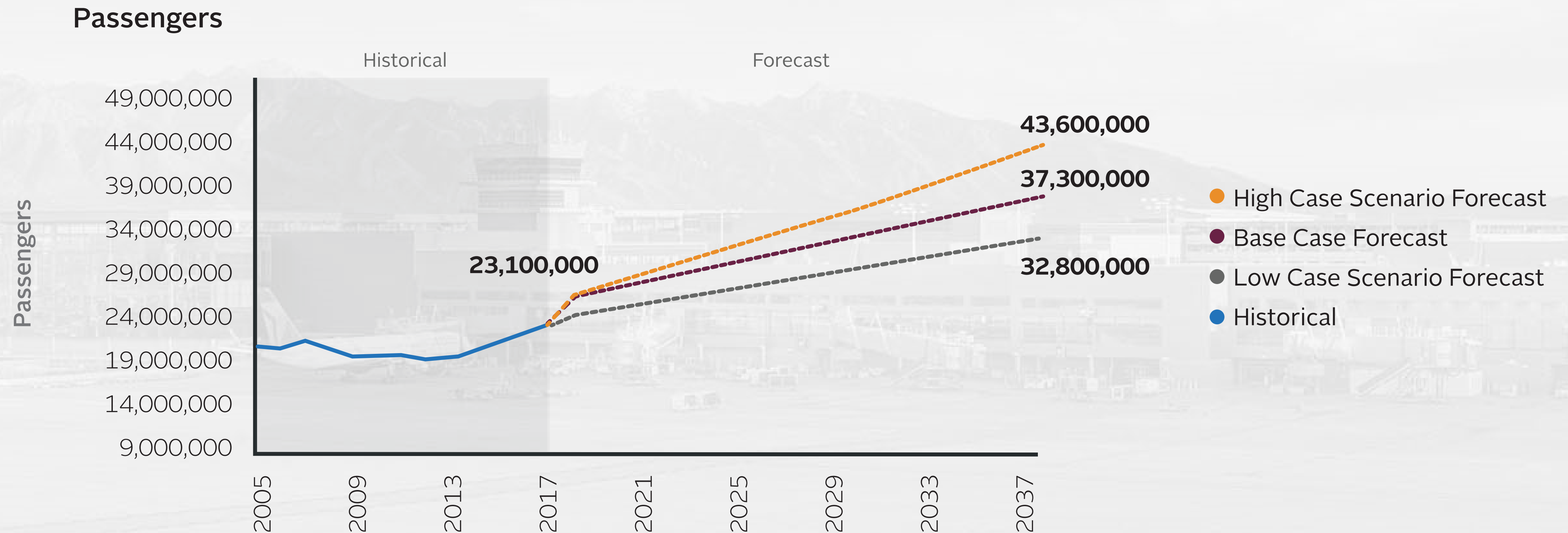
Today Being Realized!

Aviation Activity Forecast

A dark purple rectangular text box with white text, positioned over a blurred background of an airport tarmac and a cockpit instrument panel.

The forecast of aviation demand provides a basis for determining future facility requirements including the type, size, and timing of aviation development. Consequently, the forecast influences virtually all phases of the planning process.

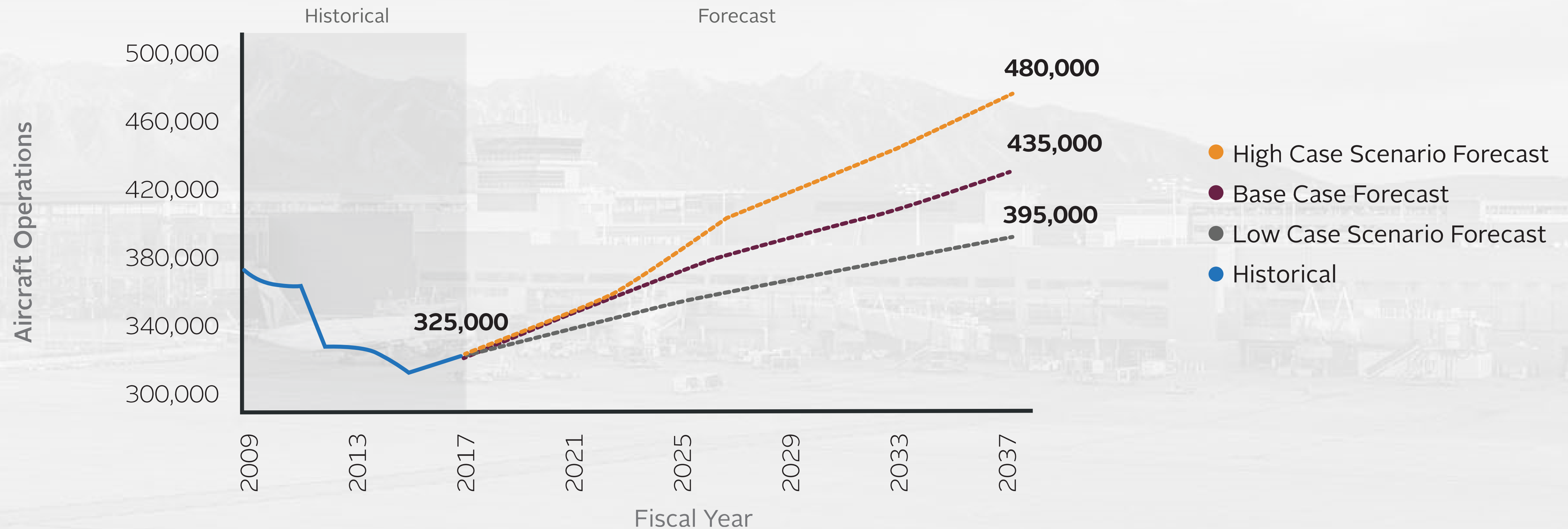
Aviation Activity Forecast



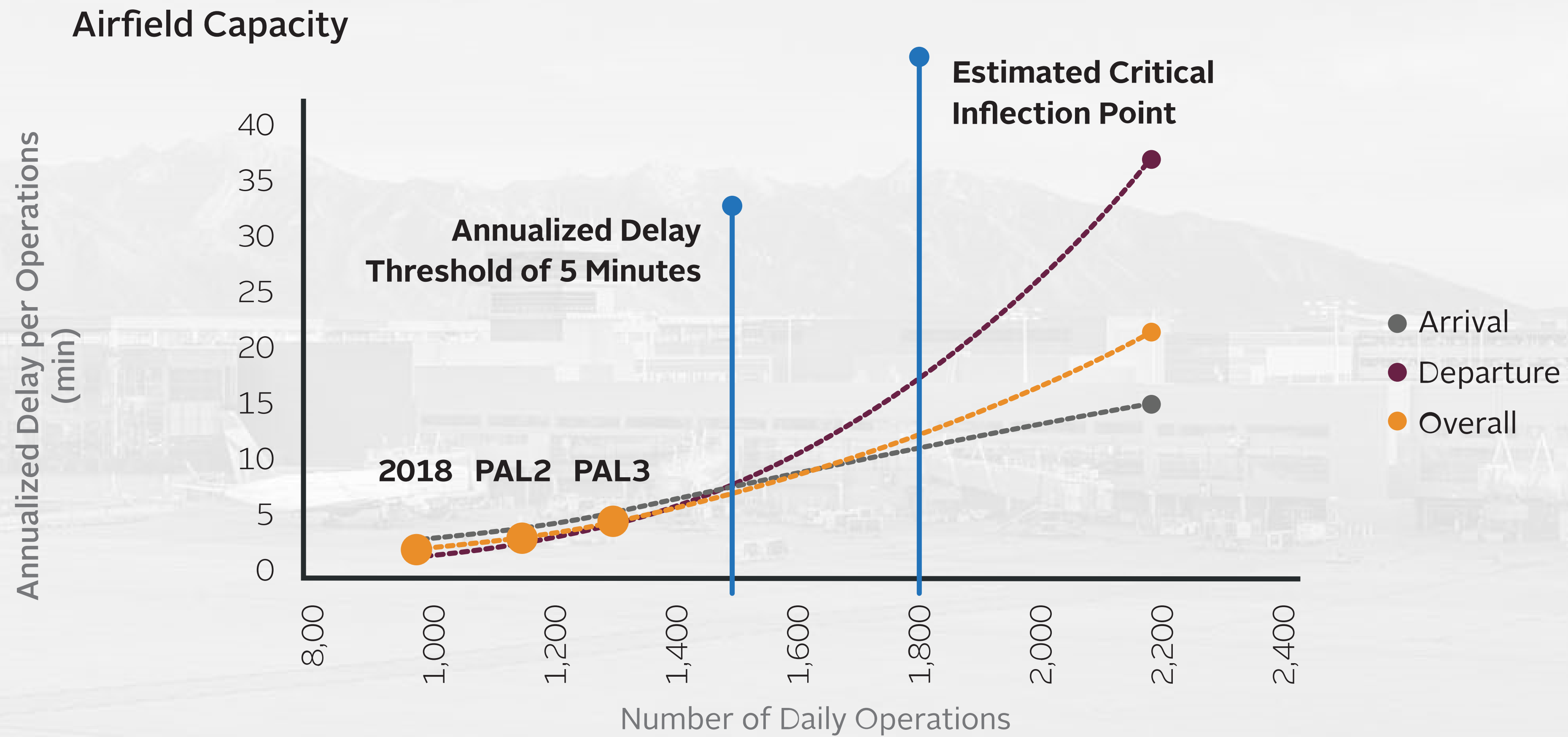
Aviation Activity Forecast



Aircraft Operations



Aviation Activity Forecast



Facility Requirements



Future airport facility requirements, including the type, size, and quantity, are dependent on future aviation activity levels projected in the aviation demand forecasts.

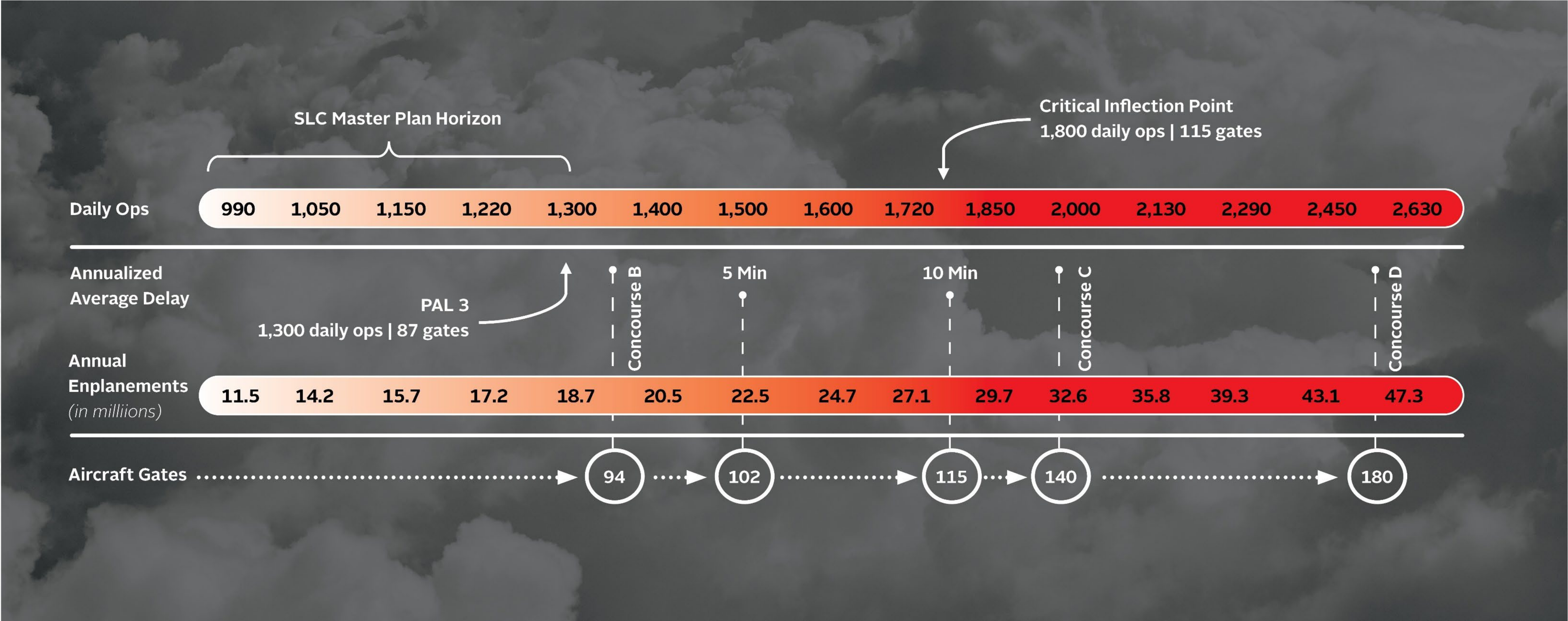
Facility Requirements



Future Facility Requirements

		2017	PAL 1	PAL 2	PAL 3
PAL	Annual Operations	325,000	355,000	385,000	435,000
	Passengers	24 Million	28 Million	32 Million	38 Million
Airfield	Hourly Throughput				
	Runway Length				
	Airfield Meets FAA Standards				
Terminal	Terminal Capacity				
Landside	Terminal Roadways				
	Parking and Rental Car Spaces				
Cargo	Dedicated Air Cargo				
Support	Support				

Balanced Airport

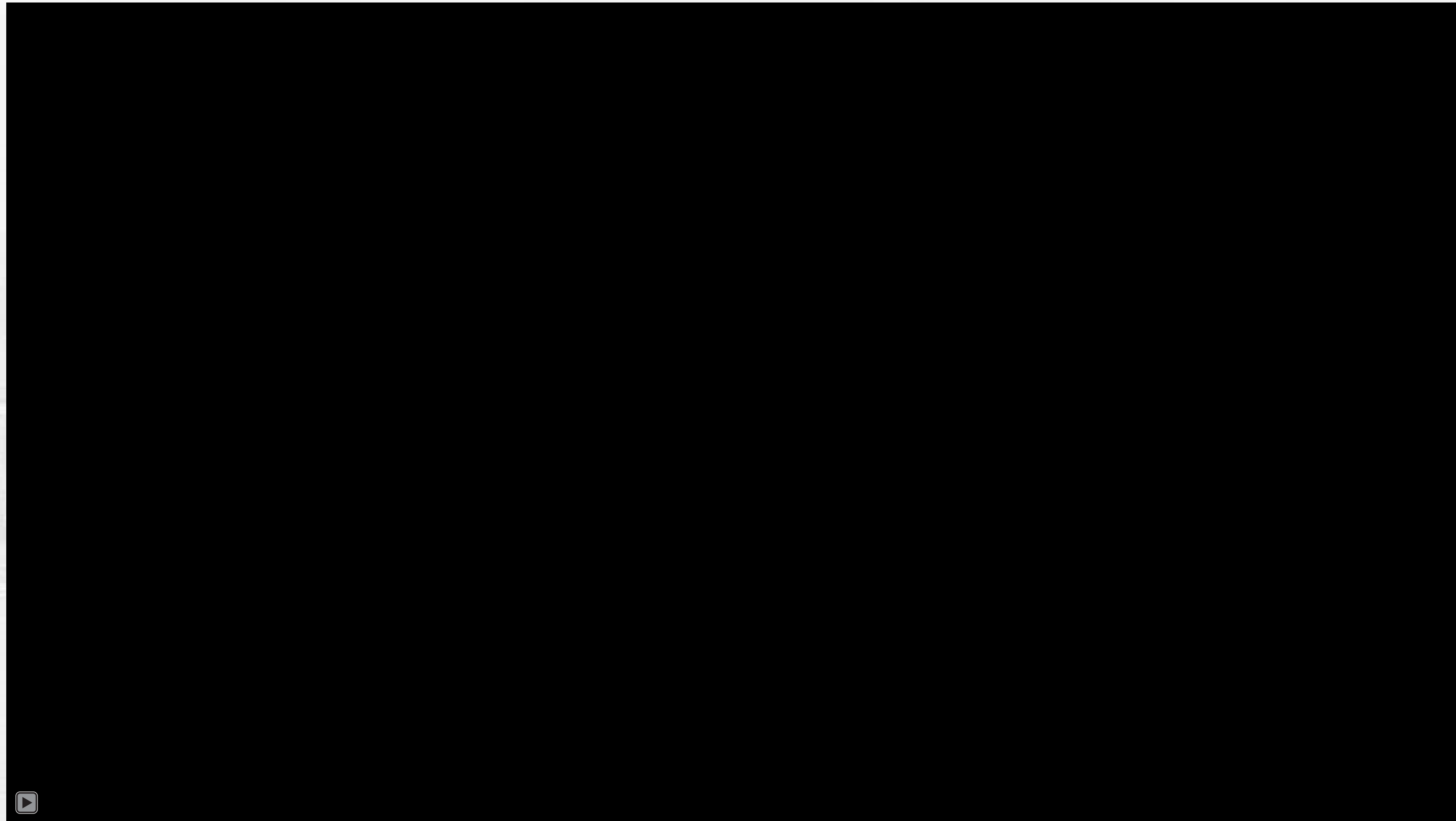


Solutions



The solutions identified ensure airport facilities are capable of meeting projected activity demand levels, are making efficient and effective use of available airport land and are meeting FAA airfield design standards.

Solutions – Airfield



Solutions – Terminal and Gates

