

DEPARTMENT OF AIRPORTS
BOARD MEETING

17 January 2018

AGENDA



Salt Lake City
Department of Airports

**SALT LAKE CITY DEPARTMENT OF AIRPORTS
BOARD MEETING AGENDA**

17 January 2018

8:00 A.M.

CONSENT AGENDA

- A. Minutes of the 13 December 2017 Meeting

DISCUSSION ITEMS

- B. Director's Report – Bill Wyatt, Executive Director, SLCDCA
- C. Airport Redevelopment Program (ARP) Update – Mike Williams, ARP Director, SLCDCA
- D. Year-End Financial Audit – Ryan Tesch, Director of Finance, SLCDCA
- E. Election of Board Chair and Vice-Chair

INFORMATION ITEMS

- A. Financial Report – November 2017
- B. Air Traffic Statistics – November 2017
- C. Comparison of On-Time Operations – October 2017
- D. Construction Report – January 2018
- E. Media Clippings – January 2018

The next meeting will be held on **Wednesday, February 21, 2018**, at 8:00 a.m. Meetings are held in the Board Room located on the third level of the short-term parking garage. People with disabilities may make requests for reasonable accommodations no later than 48 hours in advance in order to attend this [Airport Board Meeting](#). Accommodations may include alternate formats, interpreters, and other auxiliary aids. This is an accessible facility. For questions or additional information, please contact [LuJean Christensen](#) at [801-575-2096](tel:801-575-2096).

DEPARTMENT OF AIRPORTS
BOARD MEETING

17 January 2018

MINUTES

SALT LAKE CITY DEPARTMENT OF AIRPORTS MINUTES OF ADVISORY BOARD MEETING

13 December 2017

Members Present: J.T. Martin, Chair
Larry Pinnock, Vice-Chair
Igor Best-Devereux
Mickey Gallivan
Sam Granato
Senator Karen Mayne
Cyndy Miller
Steven Price
Kim Rolfe

Excused: Wade Bitner
Natalie Gochnour

Mayor's Office: Mayor Jacqueline M. Biskupski
Patrick Leary

City Council Office: James Rogers
Russell Weeks

Department of Airports: Bill Wyatt, Executive Director
Eddie Clayson, Director of Maintenance
Kristen Elder, Management Analyst
Pete Higgins, Director of Operations
Marco Kunz, Attorney
Allen McCandless, Director of Planning
Kevin Robins, Director of Engineering
Ryan Tesch, Director of Finance
Craig Vargo, Police Chief
Nancy Volmer, Director of Public Relations & Marketing
Mike Williams, TRP Program Director

J.T. Martin called the meeting to order at 8:08 am. Martin welcomed Executive Director Bill Wyatt, Councilman James Rogers, and Mayor Jacqueline Biskupski.

AGENDA

A. Minutes

The motion was made by Igor Best-Devereux and seconded by Cyndy Miller to approve the minutes of October 18, 2017 as presented. All votes were affirmative; motion passed.

B. Director's Report

Bill Wyatt, Executive Director, updated the Airport Advisory Board regarding current events.

- Wyatt thanked Airport staff for bringing him up to speed on current issues and stated that he has spent a great deal of time learning about the scope, schedule and budget of the Airport Redevelopment Program (ARP). He also stated his intention to characterize the big picture of the project and what it will mean for our community at the next meeting.
- Wyatt reported on his recent meeting in Atlanta with Delta Air Lines' network planning group. He acknowledged the value of Delta's partnership and their perspective on the ARP since they are involved with several large construction projects around the country. Delta's growth remains steady, with most of the growth in SLC coming from the local O&D market, reflecting Utah's strong economy. The upgauging of their equipment accounts for the increased passenger volume and service to more distant markets. This year, Delta will have fewer than 40 regional jet daily departures from SLC, as compared to 250 a decade ago. Today's assessment of the triangle between SLC, SEA and LAX has strengthened our position as a hub airport because we are a very strong collector for communities in the Intermountain West. Wyatt remarked that understanding how these networks function is critically important to the success of SLC and our role within the community. He emphasized that Delta is unequivocally committed to the redevelopment project and that the construction schedule is of great importance to them.
- Wyatt stated the ARP construction continues to go well and incredible progress is seen each month. The completion of the first phase is still scheduled for August 2020. Weekly meetings between the Airport and the ARP team will be shifting to a new format, discussing construction and operational transition on alternating weeks.
- Wyatt announced the grand opening of the new convenience store on December 19th, referring to a flyer in the Board packet with additional details. Wyatt described the convenience store as a great asset which remains very accessible in spite of the traffic pattern changes on northbound Terminal Drive.

Steven Price arrived at the meeting at 8:13 am.

Martin asked if Wyatt's meeting with Delta included any discussion on adding international service.

- Wyatt stated that Delta is very pleased with the flights to Amsterdam and Paris, although adding frequency is unlikely.
- The seasonal flight to London is constrained by the fact that few passengers connect beyond London because that market is pretty well owned by British Airways. Although Delta has a partnership with Virgin Atlantic, expanding service to London would also have a negative impact on the existing Paris and Amsterdam routes.
- Delta has a very strong joint venture with Aeromexico, which will begin service from SLC to Mexico City on December 23rd and to Guadalajara in January.
- The South America market is also under consideration.
- Delta's current Asian hub is in Narita, approximately 90 minutes from Tokyo. This hub is slowly dwindling because Delta does not have any Japanese partners to carry traffic beyond Narita to other Asian countries.

- Delta has added new service from Seattle to Hong Kong and also to Incheon (Seoul, South Korea), where they have recently partnered with Korean Air. An eventual hub in Incheon would allow passengers to connect to an additional 60 cities throughout Asia.
- Wyatt intends to focus on expanding the number international flights out of SLC in the future. In addition to working with community organizations and business which have a lot of international travel, he will be acquiring data which will detail the number of passengers originating in SLC with a final destination in various Asian cities.

Best-Devereux encouraged Airport staff to work with various tourism organizations to promote SLC as a destination for international travelers.

C. Airport Redevelopment Program Update

Mike Williams, Airport Redevelopment Program (ARP) Director, presented an update on the ARP (presentation on file). Main points included were:

- CGMP #4 – Landside and Airside Enabling status
- CGMP #5 – Terminal/South Concourse West/Gateway status
- CGMP #6 – Roadways/Parking Garage/Central Utility Plant status
- CGMP #7 – Baggage Handling System status
- CGMP #9 – Apron Paving – Taxiway 20/21 status
- North Concourse Project status
- Project statistics
- Overall program construction and paving sequence
- Near term schedule
- Overall capital equipment costs
- Job progress photos
- North Concourse secure area boundary and fencing
- North Concourse site access

Larry Pinnock asked Williams to describe the size of the new parking structure relative to the current one. Williams explained that the new parking structure will have 3,600 public spaces as compared to 1,200 in the existing structure. Each of the five levels of the new structure is the approximate size of three football fields.

Mickey Gallivan asked for a definition of clerestory windows. Williams explained they are windows near the roofline to bring natural light into the concourses.

Pinnock congratulated Williams and his team for the reported 867 days without a lost time injury.

Miller wondered at what point delays with the steel erection would be cause for concern. Williams acknowledged that there had been some start-up delays on steel erection and it will be an area of continual focus, but they have resequenced plans with the contractor and there is no cause for concern at this time.

Senator Karen Mayne inquired where the steel for the project came from. Williams indicated most of it is fabricated in Montana by ADF International, with some of the specialized columns made in Canada. Mayne asked if Nucor bid for the steel contract. Kevin Robins reported that Nucor has placed bids, but their bids have been very high.

Martin asked what type of dust mitigation was being used for the concrete crushing process on the apron paving projects. Williams explained that the pile is kept wet and debris is contained during the crushing process.

Best-Devereux asked if the refined costs for the North Concourse would be presented during the January meeting. Wyatt replied in the affirmative.

Best-Devereux inquired if pricing would be reevaluated for the new parking garage to maximize revenue. Wyatt answered that the pricing would be carefully examined.

Pinnock asked Williams to outline the timing of the transition.

- Approximately nine months prior to the opening of the first phase, Concourse E will be demolished and a hard stand operation will be established. This will allow crews to perform work which is necessary to have all of the international gates operational on opening day.
- When the North Concourse opens near the end of December 2020, 15 of the 20 gates will be operational. The project team is working closely with Delta on phasing for apron paving and other work which needs to be done before the remaining five gates on the North Concourse will open.
- After opening day, work will begin on the central tunnel and demolition of the existing garage, terminals and concourses.

Wyatt recognized the foresight of Airport staff to build the first tunnel 20 years ago at a cost of \$8-10 million, stressing the importance of always thinking about the future.

Councilman James Rogers asked who will oversee the transition for airside operations. Williams explained that he and his team would begin the initial transition planning in January, noting that several individuals on the project team have experience in this area, as does Thom Lang of Delta Air Lines. Wyatt acknowledged that this transition period between opening day and completion of the South Concourse East would be the most challenging part of the project. The Airport will be spending a great deal of time working to minimize inconvenience while keeping passengers focused on the future.

Martin asked Mayor Biskupski for comments. Mayor Biskupski asked that discussion of the report done on the inland port be added to the agenda for a future meeting. Best-Devereux and Martin also asked to discuss the Northwest Quadrant and the possibility of an additional runway at a future meeting.

D. Public Meetings Training

Marco Kunz, Senior City Attorney, presented the “Open and Public Meetings Training” which is required by the State law to the Board (presentation on file). Main points included were:

- Notice of meetings annual schedule, and posting requirements.
- Records of open meetings, both written minutes and a recording, are required.
- Many situations are fact specific. If issues arise, please contact Kunz or someone at the City Attorney’s office for specific advice.
- All communications – emails, letters, etc. – are subject to GRAMA requests.
- GRAMA is all inclusive and extensive.

Martin requested clarification regarding discussion of matters not on the agenda. Kunz explained that the Board may listen to (but not ask questions regarding) matters not on the agenda if they allow public comment and someone from the public brings it up. If the topic is of interest to the Board, it may be scheduled on the agenda for a future meeting. The Act is intended to prevent a lengthy discussion about a topic which hasn’t been noticed to the public.

Martin asked Councilman Rogers how discussion of matters not on the agenda is handled during City Council meetings. Rogers responded that the Council meetings always stay on topic. A City attorney is present to stop the discussion if it begins to go off-topic.

Martin inquired about the type of response which would be given to someone bringing a sign or banner to a Board meeting. Although not specifically addressed in the Utah Open and Public Meetings Act, displaying a sign or banner would fall under provisions of the First Amendment.

- Kunz reiterated that individuals willfully disrupting or seriously compromising a meeting would be asked to leave.
- Time, place and manner restrictions may be placed upon peaceful and orderly protests if there are safety or logistical concerns.
- Airport staff would speak with individuals wishing to protest during a Board meeting to determine the type and location of their intended activity. Airport police may also be consulted if needed.
- Wyatt noted there is an enormous body of law around airports and the First Amendment, and that this remains a fluid area of the law.

Martin asked if the Utah Open and Public Meetings Act would apply to Board members attending the grand opening of the convenience store. Kunz answered that because Board members are not convening as a meeting, the gathering is not subject to the Act.

E. Nominations for Board Chair and Vice-Chair

The motion was made by Igor Best-Devereux and seconded by Sam Granato to nominate Larry Pinnock as Airport Advisory Board Chair for 2018. All votes were affirmative; motion passed.

The motion was made by Mayor Biskupski and seconded by Igor Best-Devereux to nominate Cynthia Miller as Airport Advisory Board Vice-Chair for 2018. All votes were affirmative; motion passed.

Voting by acclamation will be conducted at the January Advisory Board meeting, scheduled on 17 January 2018.

The next Board meeting will be held on January 17, 2018.

J.T. Martin adjourned the meeting at 9:28 a.m.

J.T. Martin, Chair

Date

Jacqueline M. Biskupski, Mayor

Date

DEPARTMENT OF AIRPORTS
BOARD MEETING

17 January 2018

DISCUSSION ITEMS

SALT LAKE CITY AIRPORT BOARD

AGENDA: DISCUSSION ITEM (B)
DATE: 17 January 2018
TO: Airport Board
FROM: Bill Wyatt, Executive Director
SUBJECT: **Executive Director's Report**

Bill Wyatt will present a monthly informational report to the Board, may include:

1. ARP progress
2. Ground transportation update
3. Concessions and rental cars
4. Airport safety and security
5. Airport facilities and operations
6. General aviation
7. Passenger and airport users
8. Environmental matters
9. Financial condition
10. Legislative issues
11. Airlines
12. Communications and marketing

SALT LAKE CITY AIRPORT BOARD

AGENDA: DISCUSSION ITEM (C)
DATE: 17 January 2018
TO: Airport Board
FROM: Bill Wyatt, Executive Director
SUBJECT: **Airport Redevelopment Program Update**

Mike Williams, Airport Redevelopment Program (ARP) Director, will present an update on the SLC Airport Redevelopment Program (presentation on file).

Airport Redevelopment Program

Status Update: 1-17-2018



Salt Lake City International Airport



CGMP# 4 – Landside and Airside Enabling

Project: CGMP# 4 - Landside and Airside Enabling		Budget: \$81.09M	EAC: \$77.42M
Terminal/South Concourse West/Gateway/Roadways/Airside and Landside Enabling and Central Utility Plant Hydronic Piping			
		Current Status	
Schedule		Recent Milestones Achieved	
Activity	Target Date		
Complete Seq 2 Tunnel Excavation	Dec 2016 A	* Mid-Concourse Tunnel Tie-in Lid Forming Underway	
Complete SCW Surcharge	Dec 2016 A	* Mid-Concourse Tunnel Tie-in first Lid Concrete Pour scheduled for week of 1/8/2018.	
Complete West Lift Station Pumps	Mar 2017 A	* Close-out Process Underway	
Complete SCW Ductbank	Mar 2017 A	* Final CGMP Close-out Dependent on Mid-Concourse Tunnel Construction Completion	
Complete Gateway Hydronic Piping	May 2017 A		
Substantial Completion	Apr 2017		
Concerns/Issues/Risks			
* None at this time			

CGMP# 5 – Terminal/South Concourse West/Gateway

Project: CGMP# 5 - Terminal/Gateway/South Concourse West Budget: \$788.35M EAC: \$788.35M

Terminal/Gateway/South Concourse West - Foundations, Structure, Building Envelope and Build-out

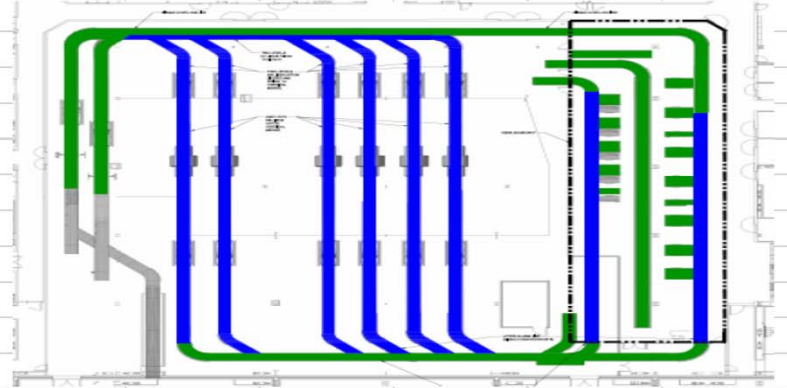
		Current Status	
Schedule		Recent Milestones Achieved	
Activity	Target Date		
Start Driven Piles	Dec 2016 A	* Terminal Structural Steel Erection Continues.	
Complete Terminal Tunnel Backfill	Sep 2017 A	* Terminal Elevated Deck Concrete Pours underway in Areas A, B, C and D.	
Complete SCW Slab on Grade	Sep 2017 A	* Terminal Plaza Curtainwall Framing underway.	
Complete SCW Structural Steel	Nov 2017 A	* SCW Temporary Heat activated.	
Complete Terminal Foundations	Feb 2018	* Started SCW Node Metal Panel Installation.	
Complete Terminal Structural Stl	Jul 2018	* Continuing Curtainwall Glass and Clerestory Glass.	
Concerns/Issues/Risks			
* Structural Steel Fabrication progress.			

CGMP# 6 – Roadways/Parking Garage/Central Utility Plant

Project: CGMP# 6 - Parking Garage/Roadways/Central Utility Plant/Project-Wide Special Systems		Budget: \$363.86M	EAC: \$363.86M
Parking Garage/Rental Car Ready Return/Elevated and At-Grade Roadways/Central Utility Plant/Project-Wide IT and Special Systems			
Current Status			
Schedule		Recent Milestones Achieved	
Activity	Target Date		
Issue NTP	Dec 2016 A	* Parking Garage Level 2 and 3 Soffolding and Concrete Proceeding.	
Start Central Utility Plant Concrete	Feb 2017 A	* Parking Garage Columns Lvl 2 - Lvl 3 Continue.	
Start Parking Garage Driven Piles	Mar 2017 A	* Roadways Bent Cap Forming and Concrete Continues.	
Complete CUP Chiller Installation	Dec 2017	* CUP Boiler Piping Installation Initiated.	
CUP Operational	May 2018	* CUP Office Area One-Side Drywall Underway.	
Parking Garage Roofing Complete	Aug 2019		
Concerns/Issues/Risks			
* None at this time.			



CGMP# 7 – Baggage Handling System

Project: CGMP# 7 - Baggage Handling System including TSA Screening Area		Budget: \$86.09M	EAC: \$86.09M
Terminal/Gateway/South Concourse West and TSA Screening Area Complete Baggage Handling System IT and Special Systems			
		Current Status	
Schedule		Recent Milestones Achieved	
Activity	Target Date		
Issue NTP	Sep 2016 A	* BIM Coordination Sessions with MEP continue.	
Start BHS Hanger Installation	Aug 2017 A	* BHS SCW Conveyor Installation Underway.	
Install TSA Provided Equipment	Jun 2019	* BHS Conveyor Fabrication Continues.	
Start BHS Testing and Commissioning	Nov 2019	* BHS Terminal Tunnel Conveyor Installation Continues.	
Start TSA BHS Acceptance Testing	Mar 2020		
BHS Substantial Completion	May 2020		
Concerns/Issues/Risks			
* None at this time.			
			

CGMP# 9 – Apron Paving – Taxilane 20/21

Project: CGMP# 9 - Apron Paving - Taxilane 20/21 and Taxiway A/B **Budget: \$26.76M** **EAC: \$24.35M**

Initial Portion of Apron Paving that will Utilize \$10 million in AIP Funding and also Support Fence Installation for North Concourse Site.

Current Status

Schedule

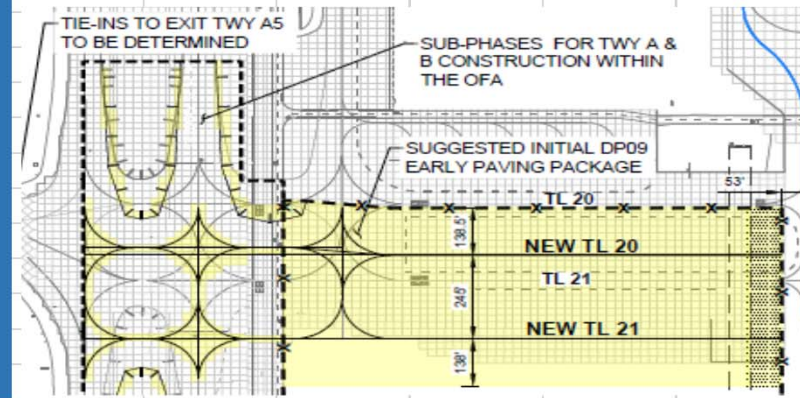
Recent Milestones Achieved

Activity	Target Date
Issue NTP	April 2017 A
Taxiway 'B' Reopens	Sep 2017 A
Taxilane 21 Reopens	Dec 2017 A
Taxiway 'A' Complete	Nov 2017 A
CGMP# 9 Bulletin# 1 Close-out	Mar 2018

*** CGMP# 9 Substantial Completion Documentation Submitted for Review.**

Concerns/Issues/Risks

*** None at this time.**

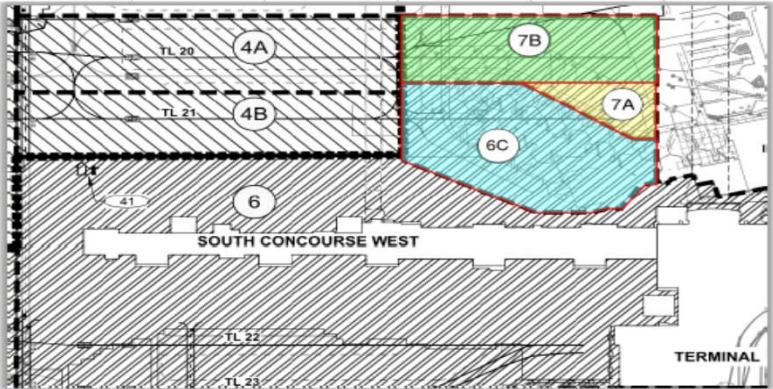


CGMP# 9A – SCW Apron Paving and Hydrant Fueling

Project: CGMP# 9A - SCW Apron Paving and Hydrant Fueling **Budget: \$76.14M** **EAC: \$76.14M**

Apron Paving and Hydrant Fueling that will Support SCW Opening Day.

		<u>Current Status</u>
Schedule		Recent Milestones Achieved
Activity	Target Date	
Issue NTP	Dec 2017 A	* CGMP# 9A for SCW Apron Paving and Hydrant Fueling Executed on 12/21/2017.
Construction Start - Fueling	Jan 2018	
Construction Start - Paving	Apr 2018	* CGMP# 9A Trade Contractors Notice to Proceed Issued.
Taxiway 'B' Phase 6A Complete	Jul 2018	
Taxiway 'B' Phase 6B Complete	Oct 2018	
Taxiway 'B' Phase 6 Complete	Jul 2020	
Concerns/Issues/Risks		
* None at this time.		



North Concourse Project

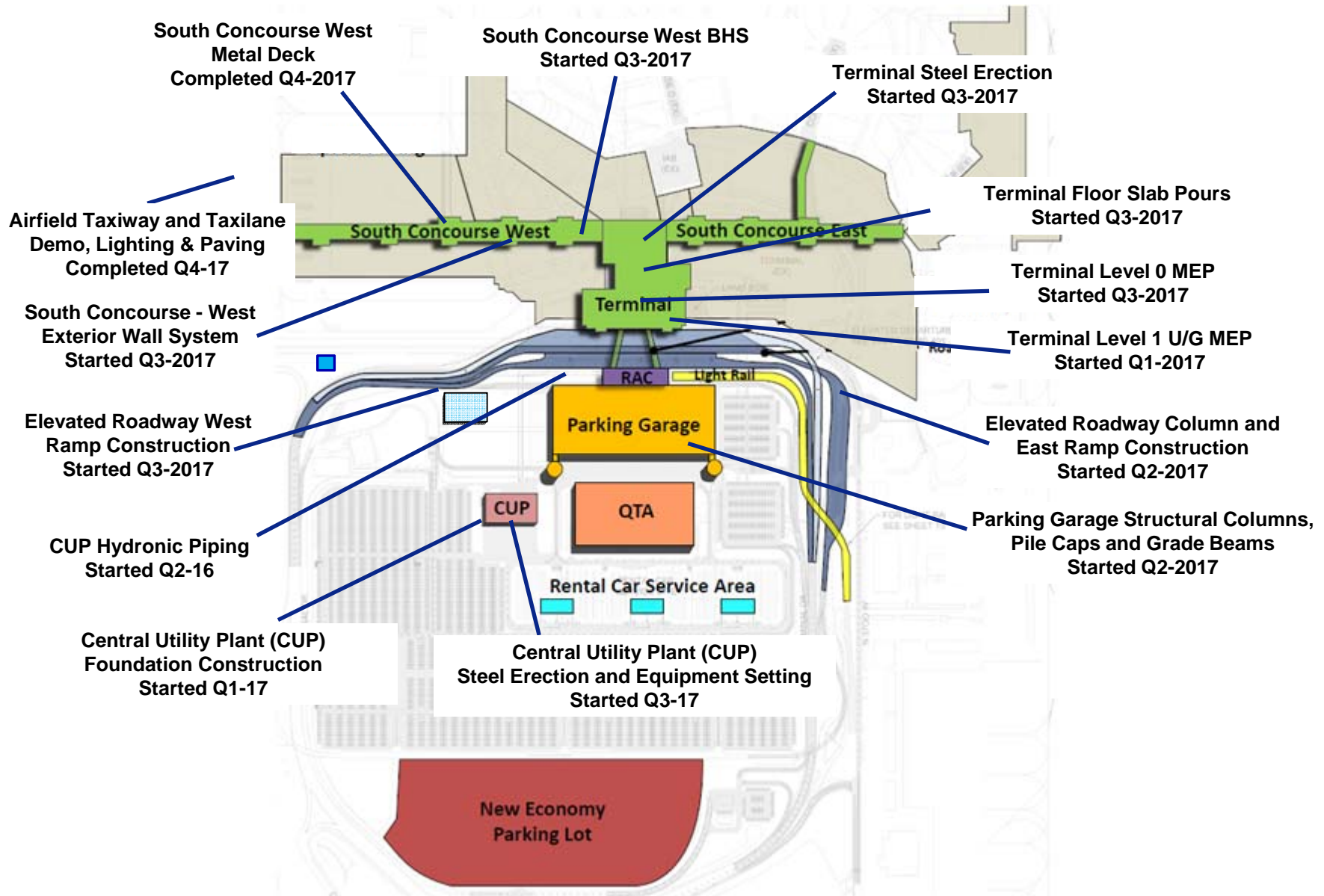
Project: North Concourse Project		Budget: As CGMPs are Approved	
North Concourse Phase 1 and Phase 2 and Associated Airfield Scope of Work			
Current Status			
Schedule		Recent Milestones Achieved	
Activity	Target Date		
Issued Design Documents	May 2017 A	* AOJV Continued Sitework for Construction Field Offices.	
Submit 5/12 Deliverable Comments	June 2017 A	* AOJV Submitted Recommendations to Award for DP15 - Enabling Phase 1 Scopes of Work.	
Receive Enabling Design Package	June 2017 A	* AOJV Submitted CGMP# 14 - General Conditions Phase 1 for Committee Approval.	
Receive CMAR/Consultant Estimates	July 2017 A	* AOJV Submitted CGMP# 15 - Enabling Phase 1 for Committee Approval.	
Complete Estimate Reconciliation	Oct 2017 A		
Start Enabling Construction	Jan 2018		
Concerns/Issues/Risks			
* Trade Contractor Capacity to Bid.			



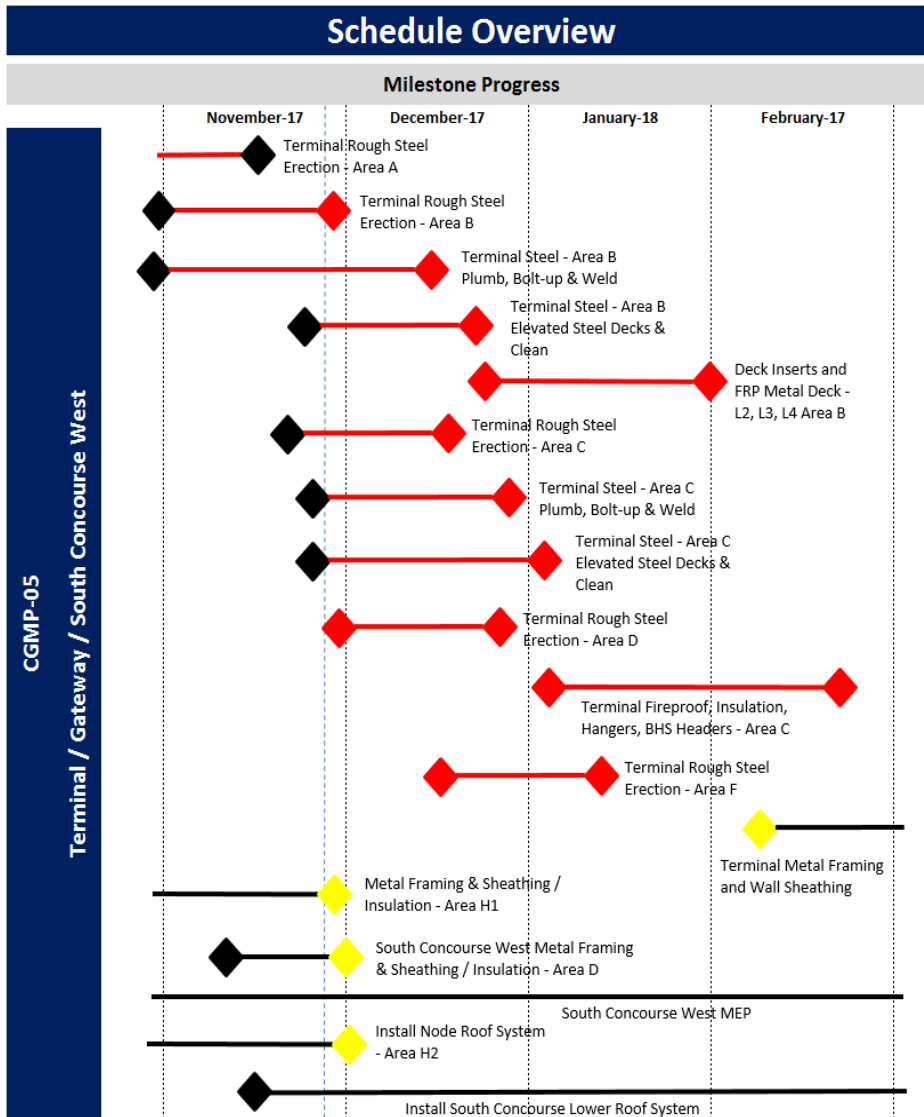
Project Statistics

Safety Statistics Through 1/05/2018				Trade Staffing 1/05/2018			
898 Days without a Lost Time Injury				832 Trade Workers on Site			
1,885,443 Hours Worked to Date							
Contract Local/Non-Local Awarded Statistics							
Local Trades		Dollar Value		Trade Count		Percentage	
Total Local (Wasatch Front) Contractors		\$750,562,831		71		67%	
Total Out of State Contractors		\$377,144,995		16		33%	
Total Contract Awards		\$1,127,707,826		87		100%	
Contract Union/Merit Shop Awarded Statistics							
Union Trades		Dollar Value		Trade Count		Percentage	
Total Union Contractors		\$369,591,438		20		33%	
Total Merit Shop Contractors		\$758,116,388		67		67%	
Total Contract Awards		\$1,127,707,826		87		100%	

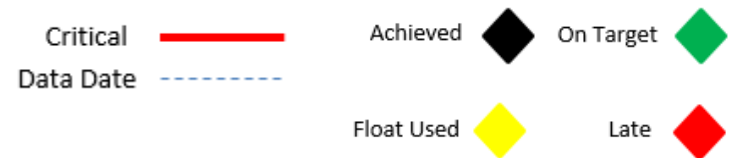
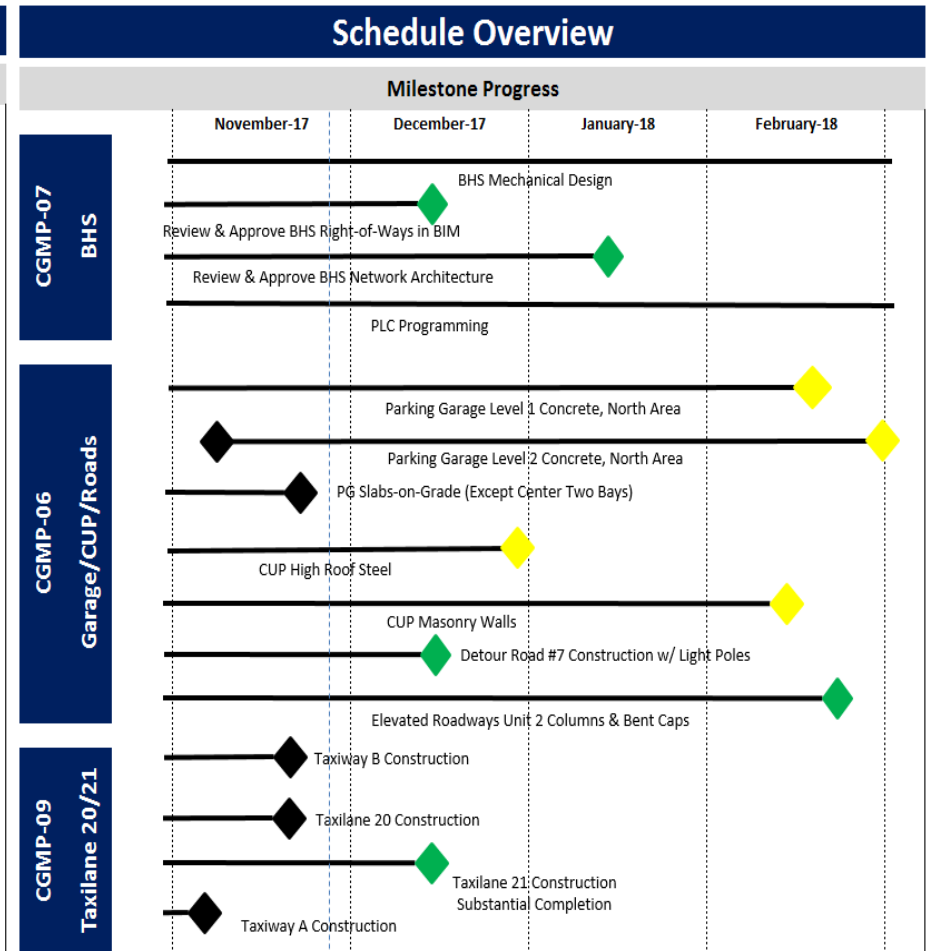
Overall Program Construction & Paving Sequence



Near Term Schedule



Overall the Program Schedule Critical Path Reflects that the Program is on Schedule.



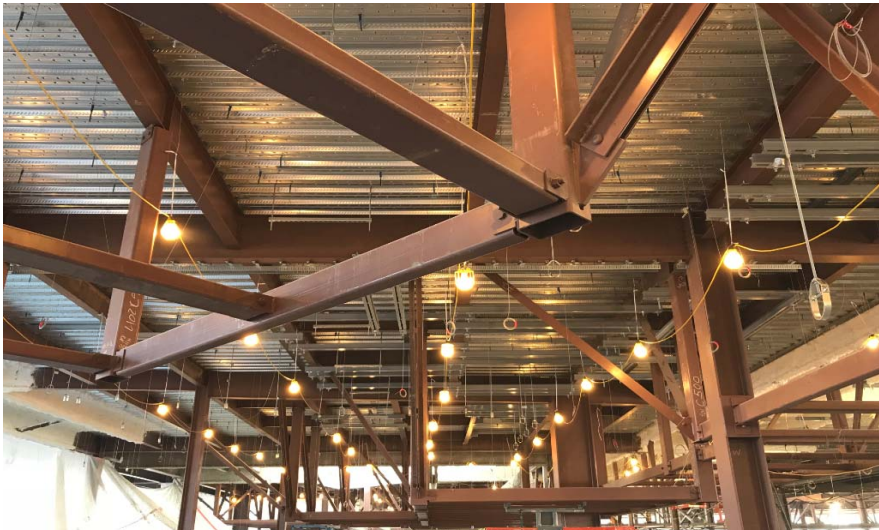
Overall Airport Redevelopment Program Budget

	Total
ARP Construction Cost	
CGMP 01 - HDJV Preconstruction Services	\$ 9,575,407
CGMP 02 - HDJV General Conditions Services	\$ 105,983,964
CGMP 03 - QTA / RSS Site Work, Utilities, Civil Enabling Work - Phase 1	\$ 88,721,327
CGMP 04 - Terminal / SCW / Roadways Enabling & CUP Hydronic Lines	\$ 81,096,441
CGMP 05 - Terminal / SCW / Gateway	\$ 788,346,442
CGMP 06 - Parking Garage & Elevated Roadways	\$ 363,855,782
CGMP 07 - TRP Baggage Handling System	\$ 87,585,765
CGMP 09 - Taxilanes 20 & 21 / Taxiways A & B	\$ 26,761,610
CGMP 09A - Apron Paving Terminal / SCW	\$ 76,135,399
CGMP 10 - South Concourse East	\$ 395,174,615
CGMP 11 - Apron Paving SCE	\$ 201,388,791
CGMP 12 - Existing Structure Demolition	\$ 20,788,411
CGMP 13 - AOJV Preconstruction Services	\$ 15,483,607
CGMP 14 - AOJV General Conditions	\$ 87,131,131
CGMP 15 - NCP Enabling Phase 1	\$ 28,222,187
CGMP 16 - North Concourse Phase 1 and Mid-Concourse Tunnel	\$ 297,192,031
CGMP 17 - NCP Baggage Handling System	\$ 56,071,065
CGMP 18 - NCP Apron Paving and Fueling Phase 1	\$ 83,323,433
CGMP 19 - North Concourse Phase 2 and Central Tunnel	\$ 212,535,351
CGMP 20 - NCP Apron Paving and Fueling Phase 2	\$ 42,110,130
CGMP 21 - NCP FF&E/Furniture	\$ 4,121,026
Total Program Construction Cost	\$ 3,071,603,915
ARP Soft Cost	
Terminal Redevelopment Program Soft Cost	\$271,316,222
North Concourse Program Soft Cost	\$153,950,554
Total Program Soft Cost	\$425,266,776
Owner Reserve	
Terminal Redevelopment Program Owner Reserve	\$38,482,957
North Concourse Program Owner Reserve	\$40,617,352
Total Program Owner Reserve	\$79,100,309
Total Airport Redevelopment Program Budget	\$ 3,575,971,000

Job Progress Photos – Terminal Building



Terminal structural steel and metal decking, viewed from the north



Baggage Trapeze steel installation begun in Terminal



Ramp Tower Structural Steel Erected



Job Progress Photos – South Concourse West



SCW curtain wall, sheathing, insulation and masonry



SCW south sloped curtain wall from the interior



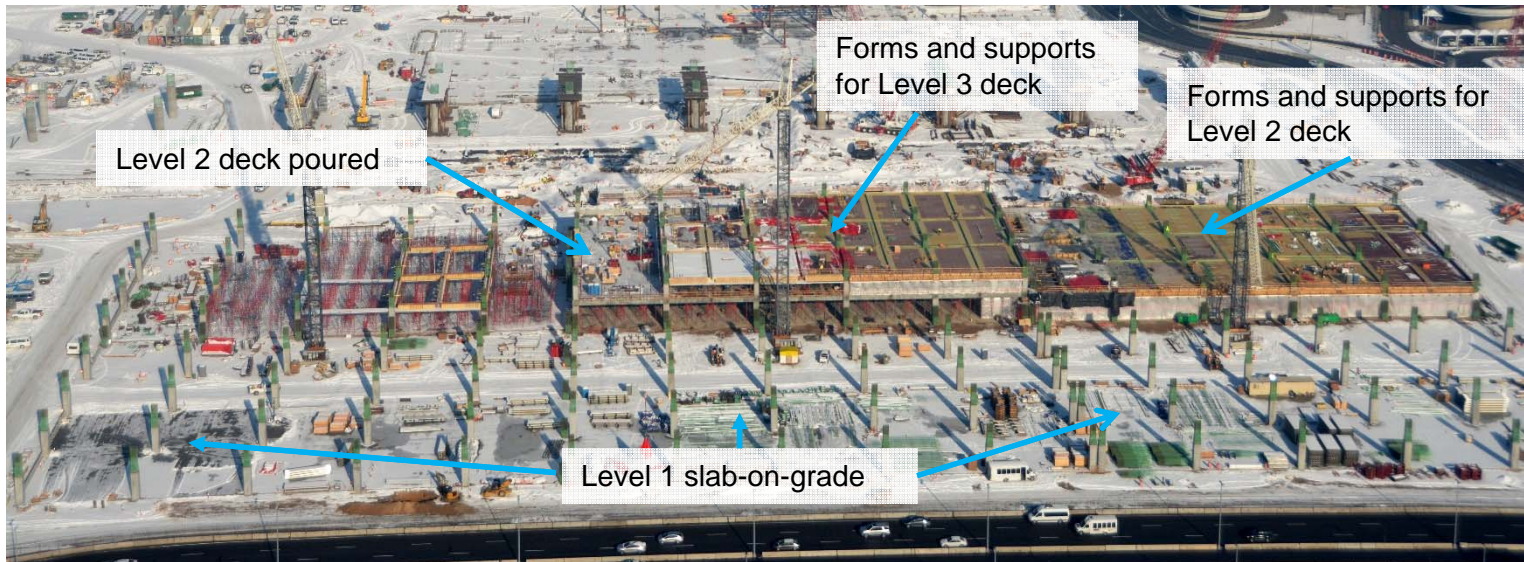
SCW baggage conveyor installation



Construction at Mid-Concourse Tunnel



Job Progress Photos – Parking Garage, Roadways, CUP



Parking Garage progress



Large diameter Chiller piping installation progress (CUP)



Roadway columns constructed between exit roads

Job Progress Aerial

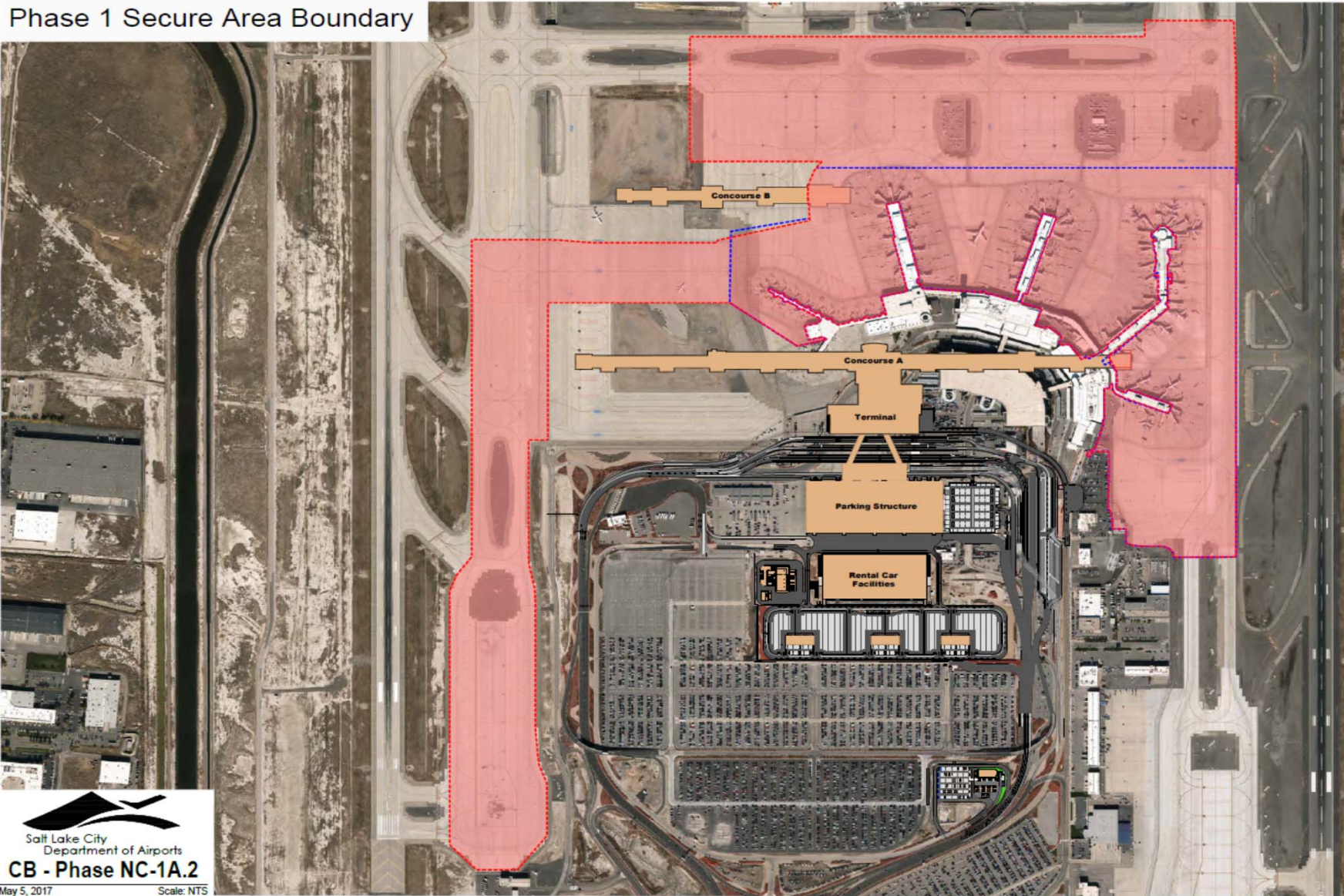


Terminal / Gateway Area



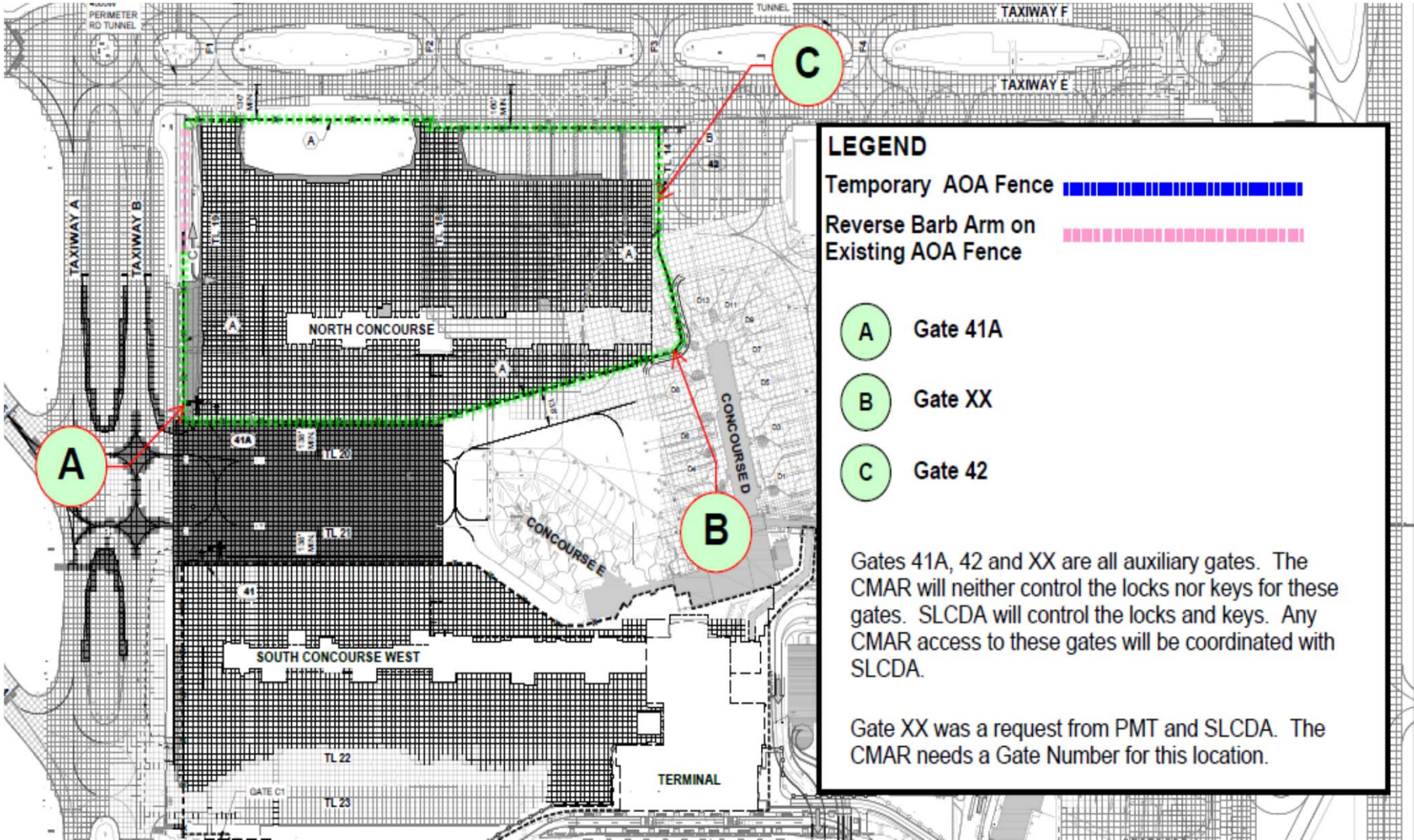
North Concourse Secure Area

Phase 1 Secure Area Boundary

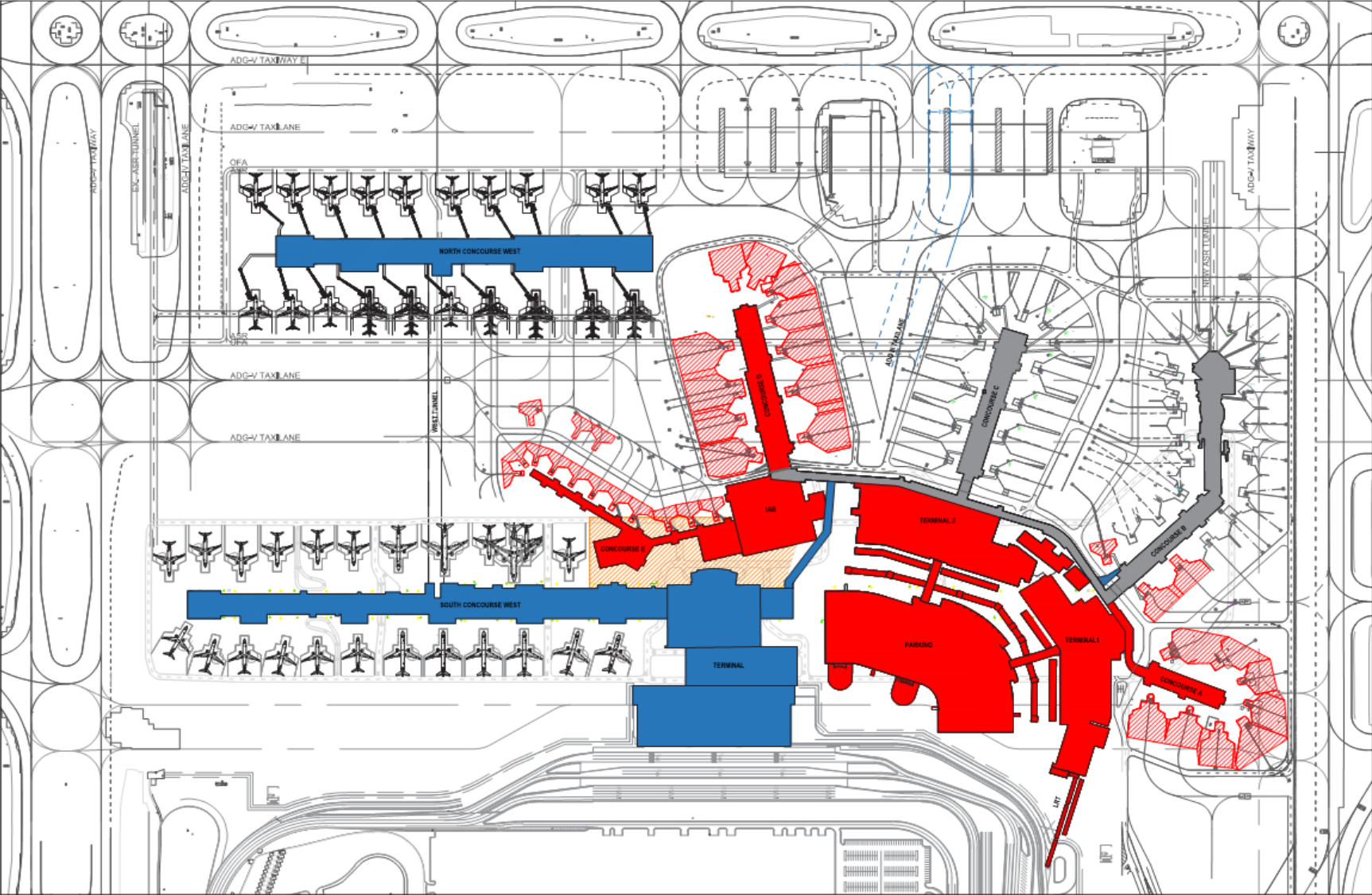



Salt Lake City
Department of Airports
CB - Phase NC-1A.2
May 5, 2017 Scale: NTS

North Concourse Construction Site Fencing

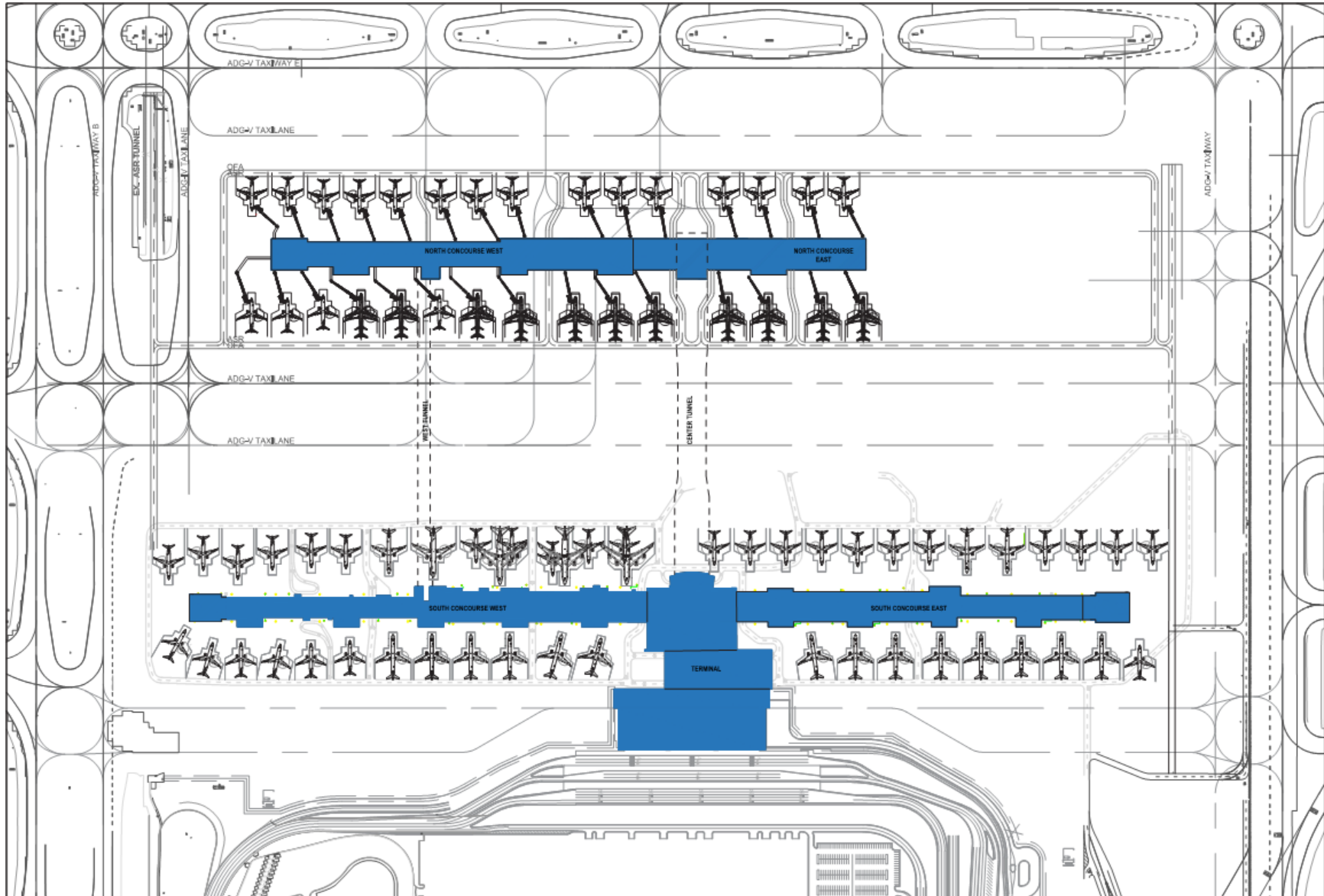


Phase 1 Complete and Start of Demolition



Demolition Construction complete

Current Program Final Phase Completed



SALT LAKE CITY AIRPORT BOARD

AGENDA: DISCUSSION ITEM (D)
DATE: 17 January 2018
TO: Airport Board
FROM: Bill Wyatt, Executive Director
SUBJECT: **Year-End Financial Audit**

Ryan Tesch, Director of Finance, will present the FY2017 Year-End Financial Audit to the Board (presentation on file).

Salt Lake City Department of Airports

Review of Financial Audit as of June 30, 2017

SLC Airport Board

January 17, 2018



FY 2017 Financial & Operational Highlights

- **Passenger traffic increased 4.9% over FY 2016**
- **Landed weights increased 6.3% over FY 2016**
- **Operating Revenue increased 9.5% over FY 2016**
- **Issued \$1 Billion of 2017 GARBS Bonds**
- **TRP/NCP spent to date over \$660m**



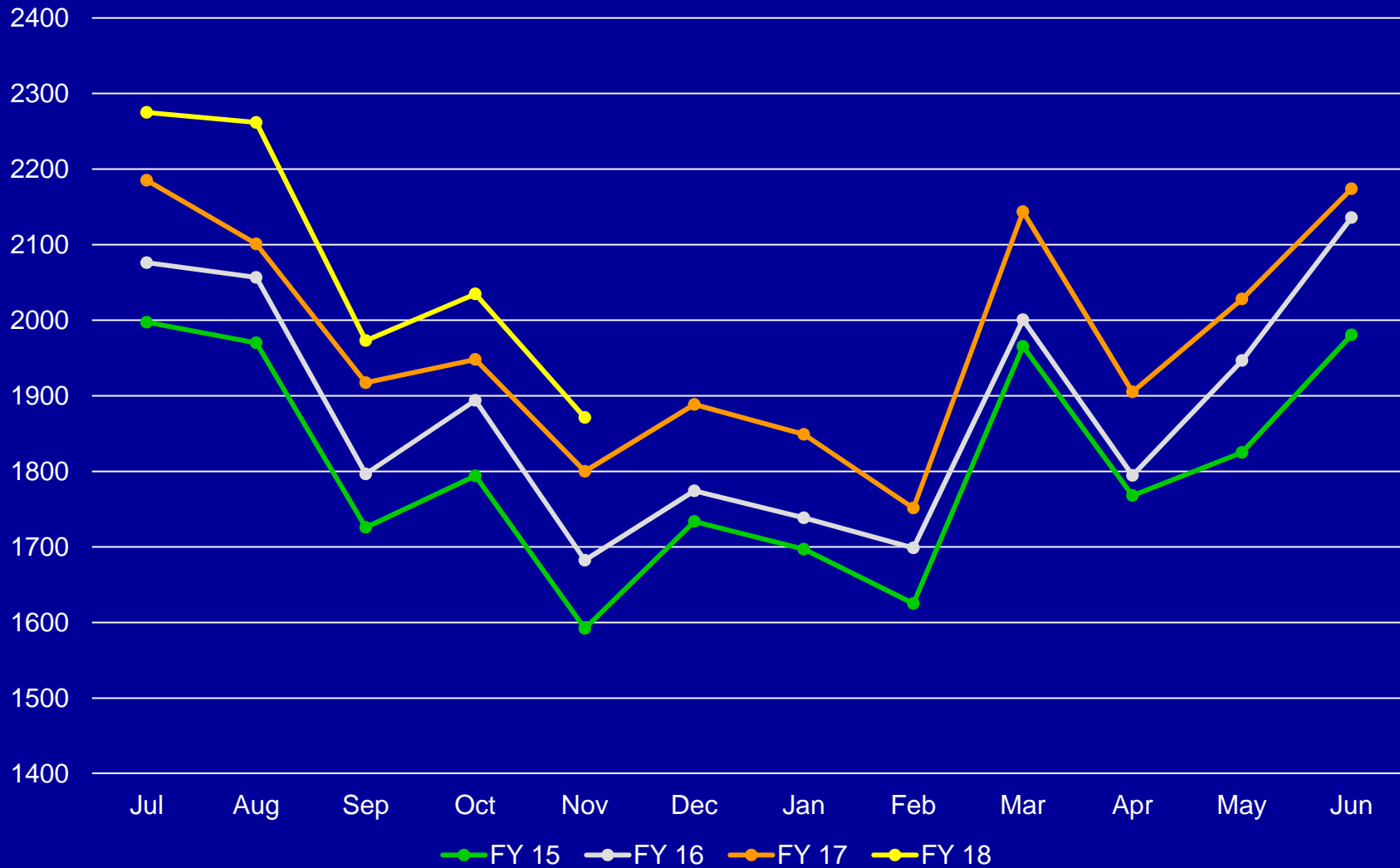
Salt Lake City International Airport

Total Passenger Traffic



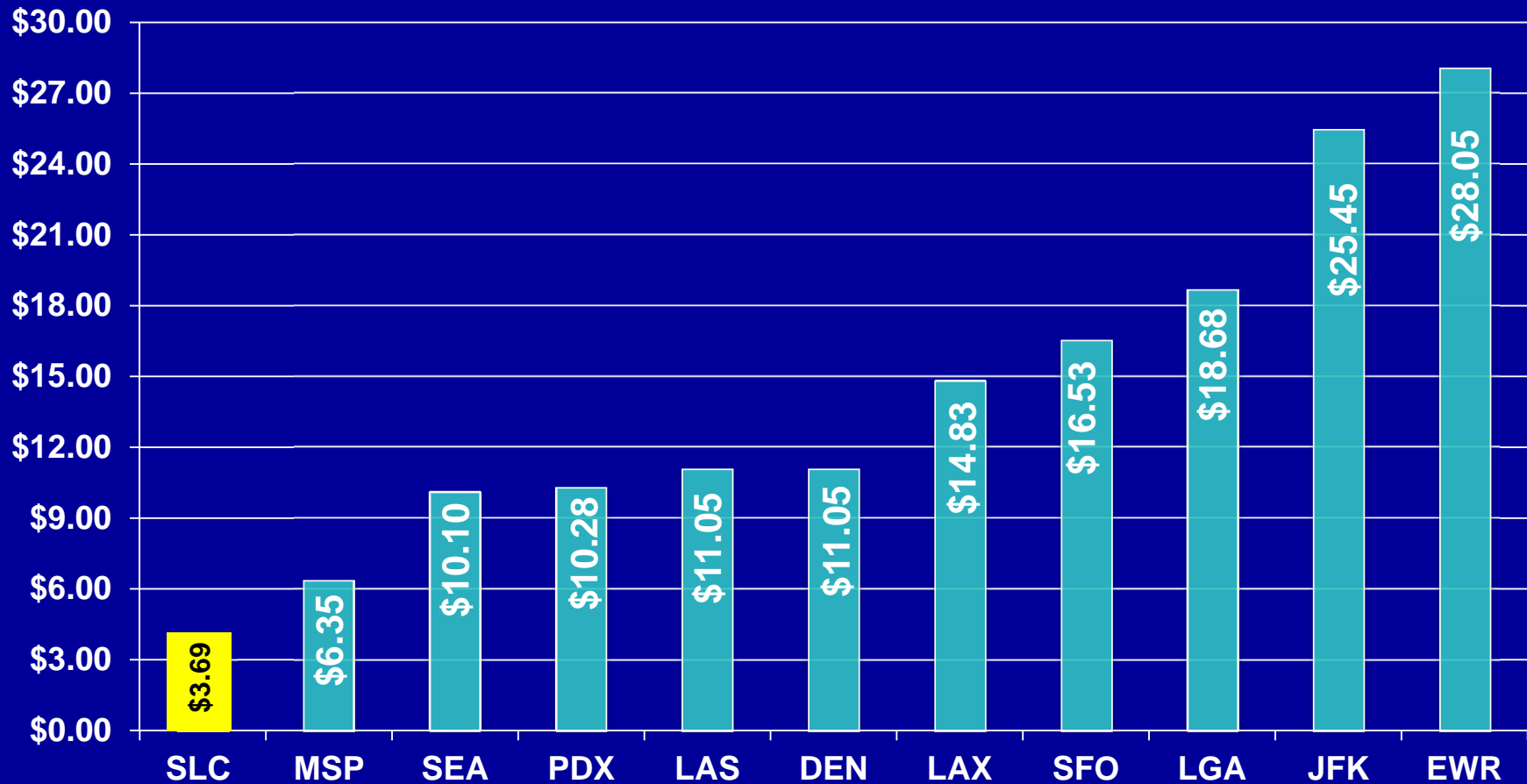
Salt Lake City International Airport

Total Passengers (000's)



Salt Lake City International Airport

SLC's airline costs per enplaned passenger (CPE) have remained lower than other airports. (FY 2016)



Source: Industry survey.

Cost Per Enplaned Passenger (CPE) Ten Year History - SLC

Airline CPE is the industry's standard performance indicator.



Source: Airport records.

Budget Comparison

Description	FY 2017 Budget	FY 2017 Actual	Favorable / (Unfavorable)
Operating Revenue	\$155,392,000	\$ 166,975,300	\$ 11,583,300
Airline Revenue Sharing	(11,071,000)	(12,169,200)	(1,098,200)
Operating Expense	<u>(97,539,400)</u>	<u>(99,459,900)</u>	<u>(1,920,500)</u>
Net Operating Income	\$ 46,781,600	\$ 55,346,200	\$ 8,253,700

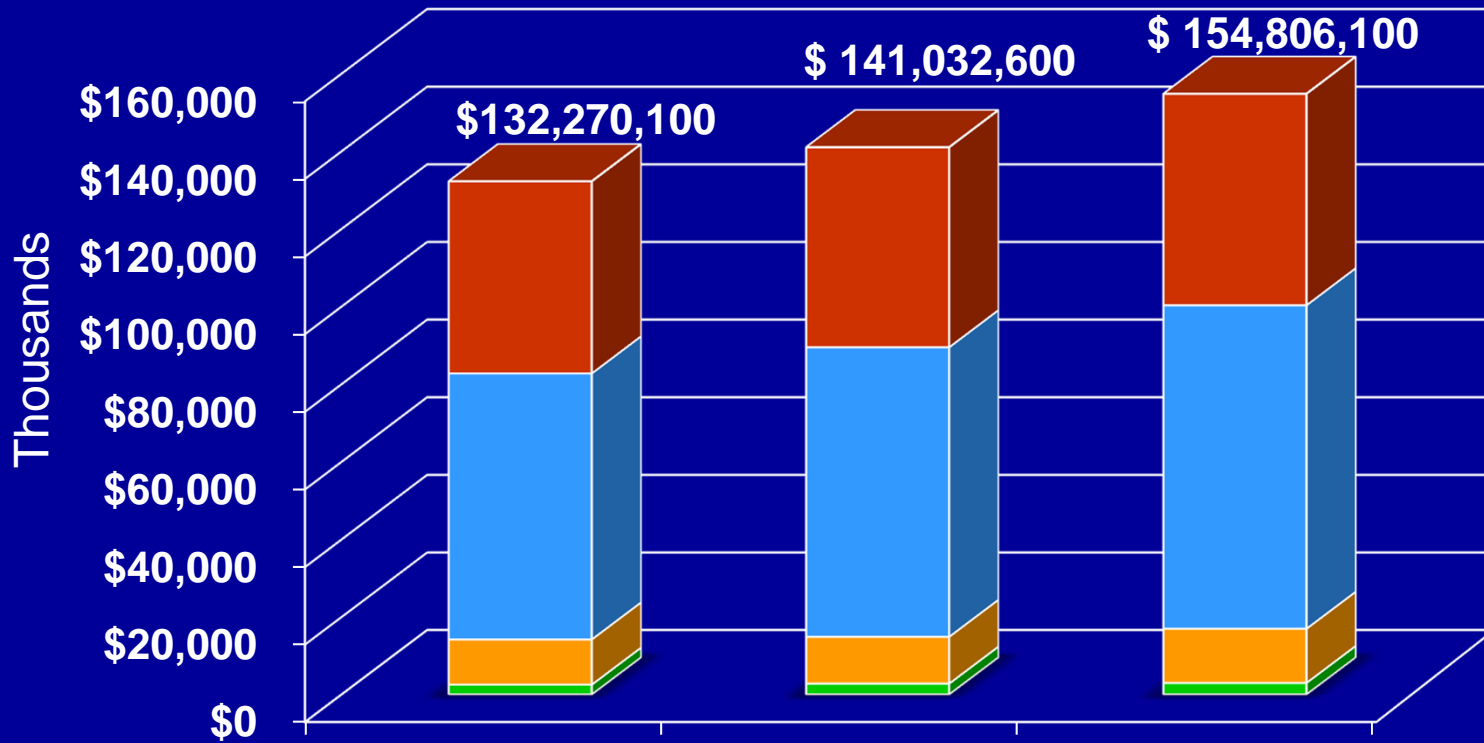


Airline Use Agreement Rates and Charges

FY17 Due or (Owe) Calculation	Amount
LANDING FEES	
Due	\$ 24,896,400
Less Net Billed	(24,905,300)
Net Owed to Airlines	(\$8,900)
TERMINAL RENTS	
Due	\$ 29,230,000
Less Net Billed	(30,145,600)
Net Owed to Airlines	(\$915,600)
<i>Net Owed to Airlines for the FY17 Reconciliation</i>	<i>(\$924,500*)</i>

* Amount owed to Airlines will be rolled forward into the FY19 rates.

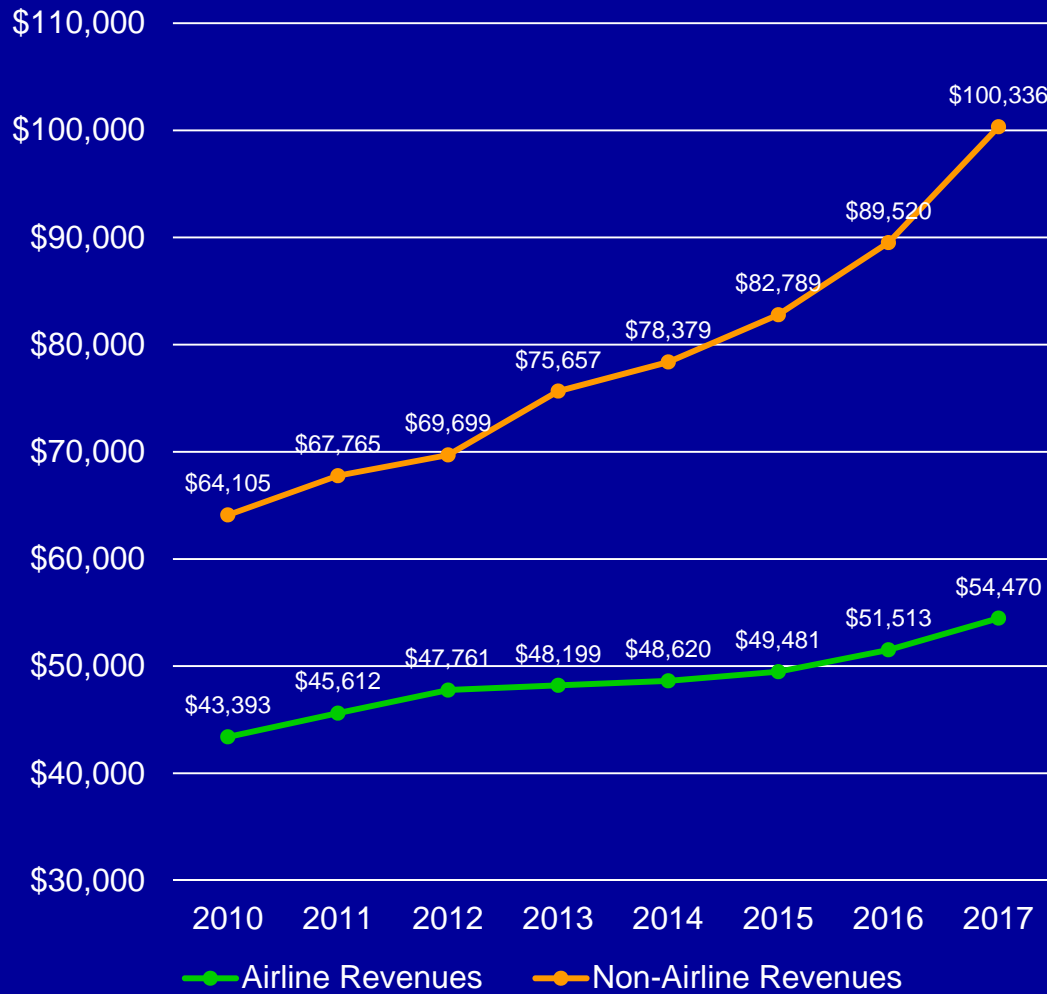
Comparison of Actual Operating Revenues



	FY 2015	FY 2016	FY 2017
Airline Revenue	\$ 49,481,200	\$ 51,512,800	\$ 54,469,900
Concessions	\$ 68,566,200	\$ 74,623,000	\$ 83,355,300
Leases / Cost Recovery	\$ 11,677,700	\$ 12,101,000	\$ 13,997,500
State Aviation Fuel Tax	\$ 2,545,100	\$ 2,795,800	\$ 2,983,400

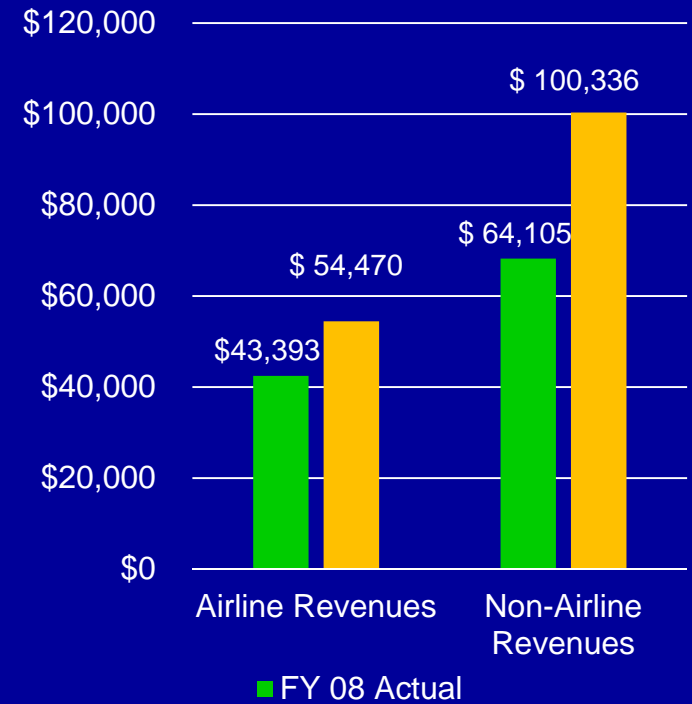
Salt Lake City International Airport

Airline and Non-Airline Revenues (000's)



% Increase
Airline Revenues
FY10 to FY17
26%

% Increase Non-
Airline Revenues
FY10 to FY17
57%

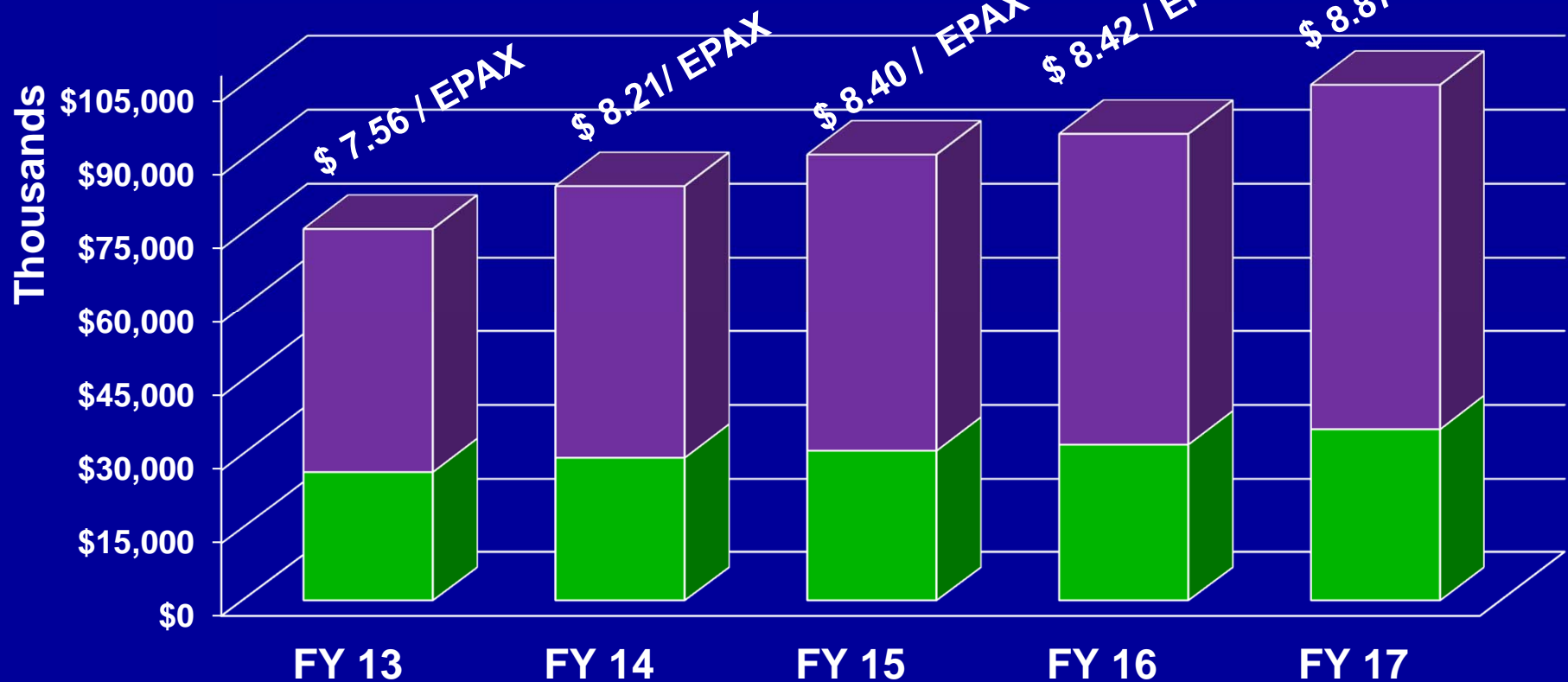


Comparison of Concession Revenue

Revenue Category	FY 2015 Actual	FY 2016 Actual	FY 2017 Actual
Auto Parking / Ground Transportation	\$ 33,209,600	\$ 35,844,100	\$ 37,221,900
Car Rental	19,340,900	22,142,200	27,186,200
Restaurants	9,715,700	9,994,500	10,989,500
Retail	5,308,600	5,538,500	5,984,800
Advertising	991,400	1,103,600	1,145,600
TOTAL CONCESSION REVENUE:	\$ 68,566,200	\$ 74,622,900	\$ 82,528,000

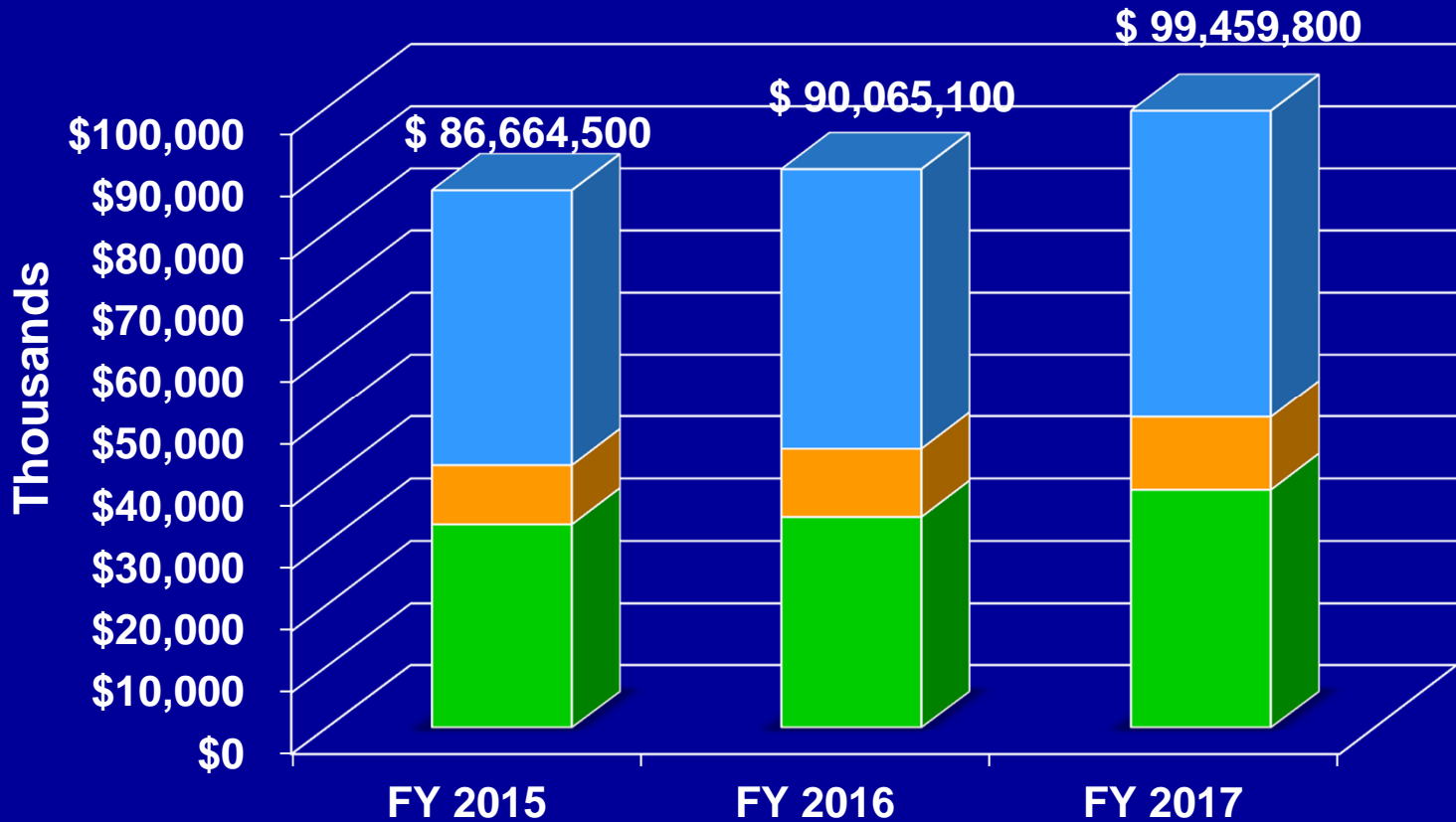


Gross Sales per Enplaned Passenger (EPAX) Five Year History - SLC



	FY 13	FY 14	FY 15	FY 16	FY 17
Restaurants	\$44,661,100	\$49,468,100	\$55,233,200	\$60,203,600	\$63,133,600
Retail	\$20,615,800	\$26,424,900	\$29,325,400	\$30,749,000	\$32,000,300
EPAX	10,044,100	10,294,700	10,833,700	11,293,000	11,850,200

Comparison of Actual Operating Expenses



	FY 2015	FY 2016	FY 2017
Salaries & Benefits	\$ 44,336,300*	\$ 45,096,200	\$ 49,350,100
Materials & Supplies	\$ 9,486,900	\$ 10,939,900	\$ 11,725,300
Charges & Services	\$ 32,841,300	\$ 34,029,000	\$ 38,384,400
*\$10.5 million in expenses reduced for OPEB and GASB 68. With adjustment was \$33,880,500			

Sources and uses of funds for the Series 2017 Bonds

Sources of Funds

Bond Par Amount	\$1,000,000,000
Original Issue Premium	126,480,830
Total Sources of Funds	\$1,126,480,830

Uses of Funds

Project Fund Deposit	\$884,074,072
Capitalized Interest	165,225,778
Debt Service Reserve Fund	73,664,500
Issuance Costs	3,516,481
Total Uses of Funds	\$1,126,480,830



Thank You

SALT LAKE CITY AIRPORT BOARD

AGENDA: DISCUSSION ITEM (E)
DATE: 17 January 2018
TO: Airport Board
FROM: Bill Wyatt, Executive Director
SUBJECT: **Election of Board Chair and Vice-Chair**

The Board will be asked to elect the Chair and Vice-Chair for 2018. At the last meeting, the Board nominated Larry Pinnock as Chair and Cynthia Miller as Vice-Chair.

DEPARTMENT OF AIRPORTS
BOARD MEETING

17 January 2018

INFORMATIONAL ITEMS

SALT LAKE CITY DEPARTMENT OF AIRPORTS
(An Enterprise Fund of Salt Lake City Corporation)
Statements of Net Position
(Amounts in Thousands)

<i>November 30,</i>	2017	2016
ASSETS		
Current Assets		
Cash and cash equivalents	\$ 262,162	\$ 150,036
Restricted cash and cash equivalents	51,841	-
Investments	11,899	350
Airline and rental fees receivable	19,523	17,525
Other assets	4,463	4,263
Total current assets	349,888	172,174
Noncurrent Assets		
Restricted cash and cash equivalents	848,572	160,109
Restricted investments	39,465	-
Investments	32,765	44,600
Other assets	2,000	2,851
Total noncurrent assets and investments	922,802	207,560
Capital assets		
Land	104,590	99,347
Building and improvements	1,369,273	1,278,012
Equipment	141,313	140,191
Construction in progress	579,418	298,649
Total capital assets - at cost	2,194,594	1,816,199
Less accumulated depreciation	950,227	894,666
Net capital assets	1,244,367	921,533
Total noncurrent assets	2,167,169	1,129,093
Total Assets	2,517,057	1,301,267
Deferred Outflows of Resources	11,948	10,182
Total Assets and Deferred Outflows of Resources	\$ 2,529,005	\$ 1,311,449

SALT LAKE CITY DEPARTMENT OF AIRPORTS
(An Enterprise Fund of Salt Lake City Corporation)
Statements of Net Position
(Amounts in Thousands)

<i>November 30,</i>	2017	2016
LIABILITIES		
Current Liabilities		
Accounts payable	\$ 14,566	\$ 10,298
Accrued compensation	2,565	2,378
Interest payable	20,833	-
Other accrued liabilities	4,363	5,823
Total current liabilities	42,327	18,499
Noncurrent Liabilities		
Revenue bonds payable	1,123,247	-
Noncurrent compensation liability	3,790	3,629
Net pension liability	27,424	25,465
Other accrued liabilities	14,116	3,878
Total noncurrent liabilities	1,168,577	32,972
Total Liabilities	1,210,904	51,471
Deferred Inflows of Resources	6,781	5,627
NET POSITION		
Net investment in capital assets	801,594	921,533
Restricted for		
Capital projects	69,901	161,757
Debt service	189,503	-
Unrestricted	250,322	171,061
Net Position	1,311,320	1,254,351
Total Liabilities, Deferred Inflows of Resources, and Net Position	\$ 2,529,005	\$ 1,311,449

SALT LAKE CITY DEPARTMENT OF AIRPORTS

(An Enterprise fund of Salt Lake City Corporation)

Statements of Revenues, Expenses, and Changes in Fund Net Position

(Amounts in Thousands)

<i>for the five month period ended November,</i>	2017	2016
Operating Revenues		
Airline revenue	\$ 30,789	\$ 28,385
Terminal concessions	7,754	7,370
Landside concessions	28,566	26,003
Lease revenue	2,505	2,272
General aviation	1,144	1,124
State aviation tax	1,313	1,294
Other revenue	3,096	1,952
Operating revenues	75,167	68,400
Less airline revenue sharing	(5,381)	(4,928)
Total operating revenues	69,786	63,472
Operating Expenses		
Salaries and benefits	21,181	20,095
Materials and supplies	3,688	3,511
Maintenance contracts	3,759	3,560
Charges and services	3,694	3,643
Utilities	2,737	2,759
Inter-governmental	2,601	2,553
Other expense	1,851	1,851
Total operating expenses before depreciation	39,511	37,972
Operating Income Before Depreciation	30,275	25,500
Depreciation Expense	26,944	27,247
Operating Income/(Loss)	3,331	(1,747)
Non-Operating Revenues (Expenses)		
Passenger facility charges	20,275	18,722
Customer facility charges	6,353	6,894
Interest income	7,090	932
Interest expense	(19,268)	-
Gain on disposition of property and equipment	37	38
Net non-operating income	14,487	26,586
Capital Contributions		
Contributions and grants, principally Airport Improvement Program	5,694	7,276
Total capital contributions	5,694	7,276
Net Position		
Increase in net position	23,512	32,115
Net Position, beginning of period	1,287,808	1,222,235
Net Position, end of period	\$ 1,311,320	\$ 1,254,350

SALT LAKE CITY DEPARTMENT OF AIRPORTS

(An Enterprise fund of Salt Lake City Corporation)

OPERATING REVENUES AND EXPENDITURES TO BUDGET (Unaudited)

(Amounts in thousands)

	JUL - NOV 2017 ACTUALS	JUL - NOV 2017 BUDGET	SURPLUS/ DEFICIT	PERCENT CHANGE
Revenues				
Landing Fees	\$ 13,524	\$ 13,455	\$ 69	0.5%
Fuel Farm	223	220	3	1.2%
Aircraft Remain Overnight Fees	134	118	16	13.7%
Cargo Bldg. & Ramp Use Fee	656	667	(11)	-1.7%
Security Charges to TSA	469	135	334	247.8%
Extraordinary Service Charges	24	34	(10)	-29.2%
Passenger Boarding Bridges	690	723	(33)	-4.5%
Tenant Telephone Fees	129	135	(6)	-4.7%
Terminal Rents	14,524	14,141	383	2.7%
General Aviation Hangars	517	497	20	3.9%
FBO Hangars/Fuel Oil Royalty	163	124	39	31.3%
Flight Kitchens	789	739	50	6.8%
Other Buildings & Office Space	2,257	2,230	27	1.2%
Food Service & Vending	4,673	4,580	93	2.0%
News/Gift Shop	2,692	2,464	228	9.3%
Car Rental	12,609	10,677	1,932	18.1%
Leased Site Areas	1,018	941	77	8.1%
Auto Parking/Ground Transportation	15,940	15,034	906	6.0%
Advertising	388	500	(112)	-22.3%
State Aviation Fuel Tax	1,313	1,264	49	3.9%
Military	77	64	13	20.1%
Glycol Recycling Sales	173	94	79	84.1%
ARFF Training	373	365	8	2.1%
Auxiliary Airport Fuel Sales	465	390	75	19.2%
Other	1,347	645	702	108.9%
Less: Airline Revenue Sharing	(5,381)	(5,078)	(303)	5.97%
Total Operating Revenues	69,786	65,158	4,628	7.1%
Expenses				
Salary & Wages	14,698	14,635	(63)	-0.4%
Employee Benefits	6,976	7,436	460	6.2%
Maintenance Supplies	1,990	4,052	2,062	50.9%
Automotive Supplies	1,070	1,255	185	14.7%
Other Supplies	627	940	313	33.3%
Insurance Premiums	1,338	977	(361)	-37.0%
Janitorial Service	2,998	3,022	24	0.8%
Maintenance Contracts	761	877	116	13.2%
Other Contractual Services	2,752	3,007	255	8.5%
Professional & Tech Service	942	2,152	1,210	56.2%
Utilities	2,737	3,619	882	24.4%
Administrative Service Fee	547	625	78	12.5%
Aircraft Rescue Fire Fighting	2,054	1,895	(159)	-8.4%
Other Expenses	513	1,245	732	58.8%
Operating Expenses Before Capitalized Salaries	40,003	45,737	5,734	12.5%
Capitalized Salaries	492	492	-	0.0%
Total Operating Expenses	39,511	45,245	5,734	12.7%
Operating Income	\$ 30,275	\$ 19,913	\$ 10,362	52.0%

SALT LAKE CITY DEPARTMENT OF AIRPORTS

(An Enterprise fund of Salt Lake City Corporation)

OPERATING REVENUES AND EXPENDITURES TO PRIOR YEAR (Unaudited)

(Amounts in thousands)

	JUL-NOV 2017	JUL-NOV 2016	SURPLUS/ (DEFICIT)	PERCENT CHANGE
Revenues				
Landing Fees	\$ 13,524	\$ 12,258	\$ 1,266	10.3%
Fuel Farm	223	220	3	1.2%
Aircraft Remain Overnight Fees	134	144	(10)	-6.6%
Cargo Bldg. & Ramp Use Fee	656	667	(11)	-1.6%
Security Charges to TSA	469	133	336	252.5%
Extraordinary Service Charges	24	31	(7)	-21.3%
Passenger Boarding Bridges	690	673	17	2.6%
Tenant Telephone Fees	129	133	(4)	-2.9%
Terminal Rents	14,524	13,291	1,233	9.3%
General Aviation Hangars	517	575	(58)	-10.2%
FBO Hangars/Fuel Oil Royalty	163	124	39	31.4%
Flight Kitchens	789	727	62	8.5%
Other Buildings & Office Space	2,257	2,261	(4)	-0.2%
Food Service & Vending	4,673	4,446	227	5.1%
News/Gift Shops	2,692	2,454	238	9.7%
Car Rental	12,609	11,022	1,587	14.4%
Leased Site Areas	1,018	907	111	12.2%
Auto Parking/Ground Transportation	15,940	14,963	977	6.5%
Advertising	388	470	(82)	-17.5%
State Aviation Fuel Tax	1,313	1,294	19	1.5%
Military	77	38	39	0.0%
Glycol Recycling Sales	173	175	(2)	-0.9%
ARFF Training	373	342	31	9.2%
Auxiliary Airport Fuel Sales	465	423	42	100.0%
Other	1,347	629	718	114.2%
Less: Airline Revenue Sharing	(5,381)	(4,928)	(453)	0.0%
Operating Revenues	69,786	63,472	6,314	9.9%
Expenses				
Salary & Wages	\$ 14,698	13,844	854	6.2%
Employee Benefits	6,976	6,707	269	4.0%
Maintenance Supplies	1,990	2,029	(39)	-1.9%
Automotive Supplies	1,070	925	145	15.6%
Other Supplies	627	557	70	12.5%
Insurance Premiums	1,338	1,301	37	2.8%
Janitorial Service	2,998	2,797	201	7.2%
Maintenance Contracts	761	763	(2)	-0.2%
Other Contractual Services	2,752	2,626	126	4.8%
Professional & Tech Service	942	1,016	(74)	-7.3%
Utilities	2,737	2,759	(22)	-0.8%
Administrative Service Fee	547	596	(49)	-8.2%
Aircraft Rescue Fire Fighting	2,054	1,957	97	5.0%
Other Expenses	513	551	(38)	-7.0%
Operating Expenses Before Capitalized Salaries	40,003	38,428	1,575	4.1%
Capitalized Salaries	492	456	35	7.8%
Total Operating Expenses	39,511	37,972	1,539	4.1%
Operating Income	\$ 30,275	\$ 25,500	\$ 4,775	18.7%



**SALT LAKE CITY INTERNATIONAL AIRPORT
AIR TRAFFIC STATISTICS AND ACTIVITY REPORT
ELEVEN MONTHS ENDED NOVEMBER 2017**

	NOVEMBER 2017	CHANGE	YTD 2017	CHANGE	12 MO ROLLING Ending 11/2017	CHANGE
PASSENGERS						
<i>DOMESTIC</i>						
Enplaned - Local	566,746	6.20%	6,935,644	7.43%	7,511,904	7.52%
Enplaned - Connections	373,223	0.58%	4,216,106	0.46%	4,569,517	0.65%
Less International	-25,698		-416,534		-447,278	
Enplaned	914,271	3.87%	10,735,216	4.15%	11,634,143	4.23%
Deplaned - Local	558,024	6.44%	6,898,818	7.50%	7,504,288	7.59%
Deplaned - Connection	373,223	0.58%	4,216,106	0.46%	4,569,517	0.65%
Less International	-24,827		-438,079		-468,004	
Deplaned	906,420	4.06%	10,676,845	4.06%	11,605,801	4.17%
TOTAL DOMESTIC	1,820,691	3.97%	21,412,061	4.10%	23,239,944	4.20%
<i>INTERNATIONAL</i>						
Enplaned	25,698	4.82%	416,534	20.75%	447,278	22.53%
Deplaned	24,827	2.15%	438,079	23.69%	468,004	25.35%
TOTAL INTERNATIONAL	50,525	3.49%	854,613	22.24%	915,282	23.96%
TOTAL PASSENGERS	1,871,216	3.95%	22,266,674	4.70%	24,155,226	4.83%
LANDED WEIGHT						
Air Carriers	1,047,577,869	3.34%	12,393,295,152	4.59%	13,480,380,747	4.90%
Cargo Carriers	97,800,530	4.40%	1,000,492,259	4.27%	1,125,331,411	2.35%
TOTAL LANDED WEIGHT (LBS)	1,145,378,399	3.43%	13,393,787,411	4.56%	14,605,712,158	4.70%
MAIL						
Enplaned	2,004,676	8.46%	22,202,078	16.63%	23,503,768	14.78%
Deplaned	1,192,251	7.82%	12,482,789	39.67%	13,625,151	37.50%
TOTAL MAIL (LBS)	3,196,927	8.22%	34,684,867	23.99%	37,128,919	22.19%
CARGO						
Enplaned	15,386,485	11.58%	161,377,540	8.27%	178,126,137	6.88%
Deplaned	18,443,088	11.39%	183,728,116	9.24%	203,487,509	9.13%
TOTAL CARGO (LBS)	33,829,573	11.48%	345,105,656	8.78%	381,613,646	8.07%
MAIL & CARGO						
Enplaned	7,693	11.57%	80,689	8.27%	89,063	6.88%
Deplaned	9,222	11.39%	91,864	9.24%	101,744	9.13%
TOTAL MAIL & CARGO (TONS)	16,915	11.47%	172,553	8.78%	190,807	8.07%
AIRCRAFT OPERATIONS						
Passenger Aircraft	19,208	2.34%	228,368	2.40%	248,816	2.66%
All-Cargo Aircraft	1,722	1.29%	18,102	0.93%	20,204	1.19%
General Aviation	4,092	18.92%	43,035	-6.64%	46,380	-7.05%
Military	611	-26.74%	6,229	-7.61%	6,691	-7.82%
TOTAL AIRCRAFT OPERATIONS	25,633	3.60%	295,734	0.67%	322,091	0.81%

**SALT LAKE CITY INTERNATIONAL AIRPORT
PASSENGER TRAFFIC REPORT
ELEVEN MONTHS ENDED NOVEMBER 2017**

	NOVEMBER 2016	NOVEMBER 2017	% CHANGE	YTD 2016	YTD 2017	% CHANGE	12 MO ROLLING Ending 11/2017	% CHANGE
ENPLANED PASSENGERS								
AIR CANADA	630	-	-100.0%	12,346	17,393	40.9%	18,100	46.6%
ALASKA	23,012	21,045	-8.5%	257,897	267,447	3.7%	291,453	5.4%
Horizon Air / Alaska	3,418	1,771	-48.2%	55,141	32,700	-40.7%	36,393	-39.9%
Skywest / Alaska	5,501	5,605	1.9%	75,600	68,239	-9.7%	73,519	-10.9%
AMERICAN	33,812	46,678	38.1%	551,464	579,823	5.1%	626,015	8.5%
American Eagle/Republic	-	-	0.0%	6,876	-	-100.0%	-	-100.0%
Compass	7,173	1,873	-73.9%	57,869	34,433	-40.5%	38,539	-37.1%
Envoy Air	243	-	-100.0%	21,246	1,137	-94.6%	3,681	-83.7%
American/Mesa Air	-	-	0.0%	2,893	-	-100.0%	-	-100.0%
SkyWest (American)	5,744	4,943	-13.9%	45,591	86,541	89.8%	90,266	90.2%
DELTA	478,338	498,863	4.3%	5,338,638	5,850,685	9.6%	6,313,505	9.7%
SkyWest (Delta Connection)	167,755	158,772	-5.4%	1,994,920	1,865,293	-6.5%	2,050,473	-6.0%
Compass (Delta Connection)	2,624	15,199	479.2%	116,856	92,159	-21.1%	96,420	-24.3%
FRONTIER	20,196	21,290	5.4%	212,036	214,132	1.0%	233,512	2.9%
JETBLUE	21,167	26,549	25.4%	235,121	298,184	26.8%	320,085	26.9%
KLM ROYAL DUTCH AIRLINES	-	-	0.0%	13,431	19,955	48.6%	19,955	48.6%
SOUTHWEST	93,068	95,630	2.8%	1,133,681	1,147,835	1.2%	1,241,514	1.2%
UNITED	16,814	13,932	-17.1%	205,305	267,251	30.2%	294,829	30.7%
Express Jet	-	-	0.0%	446	31	-93.0%	31	-93.0%
Mesa Airlines (United Express)	360	4,118	1043.9%	2,372	14,773	522.8%	15,736	523.5%
Republic Airways (United)	1,880	1,554	-17.3%	12,908	35,981	178.7%	38,312	185.5%
Shuttle America (United Express)	477	-	-100.0%	9,671	-	-100.0%	-	-100.0%
SkyWest (United Express)	21,720	21,406	-1.4%	281,871	250,229	-11.2%	269,889	-11.5%
Trans States	185	44	-76.2%	3,476	319	-90.8%	755	-78.3%
US AIRWAYS	-	-	0.0%	-	-	0.0%	-	-100.0%
Charters	622	697	12.1%	5,191	7,210	38.9%	8,439	50.8%
TOTAL ENPLANED PASSENGERS	904,739	939,969	3.9%	10,652,846	11,151,750	4.7%	12,081,421	4.8%
DEPLANED PASSENGERS								
AeroMexico	-	-	0.0%	5	-	-100.0%	-	-100.0%
AIR CANADA	856	-	-100.0%	13,041	16,789	28.7%	17,788	36.4%
ALASKA AIR	21,373	20,082	-6.0%	250,005	261,960	4.8%	285,845	6.1%
Horizon Air / Alaska	3,281	1,820	-44.5%	53,211	29,917	-43.8%	33,693	-42.6%
Skywest / Alaska	5,484	5,826	6.2%	76,712	71,727	-6.5%	77,238	-7.9%
AMERICAN	34,445	45,720	32.7%	547,194	571,530	4.4%	621,052	7.8%
American Eagle/Republic	-	-	0.0%	6,982	-	-100.0%	-	-100.0%
Compass	3,623	1,740	-52.0%	52,680	33,912	-35.6%	37,880	-32.2%
Envoy Air (American)	190	-	-100.0%	19,700	1,017	-94.8%	4,019	-81.3%
American/Mesa Air	-	-	0.0%	3,210	-	-100.0%	-	-100.0%
SkyWest (American)	5,613	4,716	-16.0%	44,526	83,348	87.2%	87,069	87.8%
DELTA	475,255	494,530	4.1%	5,328,316	5,834,809	9.5%	6,313,705	9.6%
SkyWest (Delta Connection)	167,222	158,859	-5.0%	1,996,998	1,855,061	-7.1%	2,041,713	-6.7%
Compass (Delta Connection)	2,591	14,627	464.5%	115,010	90,726	-21.1%	95,022	-24.5%
FRONTIER	20,322	21,262	4.6%	211,688	218,214	3.1%	238,539	5.0%
JETBLUE	21,345	26,246	23.0%	234,633	295,665	26.0%	318,846	26.1%
KLM ROYAL DUTCH AIRLINES	-	-	0.0%	15,864	39,726	150.4%	39,726	150.4%
SOUTHWEST	92,575	95,522	3.2%	1,130,343	1,144,902	1.3%	1,242,715	1.3%
UNITED	15,689	12,722	-18.9%	199,950	254,576	27.3%	282,005	27.0%
Express Jet	-	-	0.0%	452	75	-83.4%	75	-83.4%
Mesa Airlines / United Express	333	3,978	1094.6%	2,386	15,119	533.7%	16,170	532.6%
Republic Airways (United)	2,052	1,525	-25.7%	13,719	37,371	172.4%	40,214	178.3%
Shuttle America (United Express)	428	-	-100.0%	9,833	-	-100.0%	-	-100.0%
SkyWest (United Express)	21,769	21,382	-1.8%	277,250	250,681	-9.6%	270,941	-9.2%
Trans States	155	53	-65.8%	3,429	314	-90.8%	740	-78.4%
US AIRWAYS	-	-	0.0%	-	-	0.0%	-	-100.0%
Charters	726	637	-12.3%	6,992	7,485	7.1%	8,810	21.0%
TOTAL DEPLANED PASSENGERS	895,327	931,247	4.0%	10,614,129	11,114,924	4.7%	12,073,805	4.9%
TOTAL PASSENGERS*	1,800,066	1,871,216	4.0%	21,266,975	22,266,674	4.7%	24,155,226	4.8%
INTERNATIONAL - ENPLANED								
AIR CANADA	630	-	-100.0%	12,346	17,393	40.9%	18,100	46.6%
DELTA	18,235	18,892	3.6%	237,532	292,446	23.1%	316,611	25.8%
SkyWest (Delta Connection)	5,578	4,615	-17.3%	70,508	77,129	9.4%	83,001	8.9%
Compass	73	2,050	2708.2%	11,132	9,469	-14.9%	9,469	-15.4%
KLM ROYAL DUTCH AIRLINES	-	-	0.0%	13,431	19,955	48.6%	19,955	48.6%
Charters	-	141	100.0%	-	142	100.0%	142	-15.5%
TOTAL ENPLANED INTERNATIONAL	24,516	25,698	4.8%	344,949	416,534	20.8%	447,278	22.5%
DEPLANED INTERNATIONAL								
AeroMexico	-	-	0.0%	5	-	-100.0%	-	-100.0%
AIR CANADA	856	-	-100.0%	13,041	16,789	28.7%	17,788	36.4%
DELTA	18,427	18,538	0.6%	239,948	296,656	23.6%	319,813	26.2%
SkyWest (Delta Connection)	4,927	4,295	-12.8%	75,183	75,203	0.0%	80,972	0.5%
Compass	95	1,994	1998.9%	10,148	9,705	-4.4%	9,705	-5.0%
KLM ROYAL DUTCH AIRLINES	-	-	0.0%	15,864	39,726	150.4%	39,726	150.4%
Charters	-	-	0.0%	-	-	0.0%	-	-100.0%
TOTAL DEPLANED INTERNATIONAL	24,305	24,827	2.1%	354,189	438,079	23.7%	468,004	25.3%
TOTAL INTERNATIONAL PASSENGERS	48,821	50,525	3.5%	699,138	854,613	22.2%	915,282	24.0%

*Includes International

**SALT LAKE CITY INTERNATIONAL AIRPORT
ELEVEN MONTHS ENDED NOVEMBER 2017
Based on Total Enplanements**

MARKET SHARE

	NOVEMBER 2016	MARKET SHARE	NOVEMBER 2017	MARKET SHARE	YTD 2016	MARKET SHARE	YTD 2017	MARKET SHARE	12 MO ROLLING Ending 11/2016	12 MO ROLLING Ending 11/2017	MARKET SHARE
AIR CANADA	630	0.07%	-	0.00%	12,346	0.12%	17,393	0.16%	12,346	18,100	0.15%
ALASKA	31,931	3.53%	28,421	3.02%	388,638	3.65%	368,386	3.30%	419,441	401,365	3.32%
AMERICAN	46,972	5.19%	53,494	5.69%	685,939	6.44%	701,934	6.29%	718,088	758,501	6.28%
DELTA	648,717	71.70%	672,834	71.58%	7,450,414	69.94%	7,808,137	70.02%	8,066,844	8,460,398	70.03%
FRONTIER	20,196	2.23%	21,290	2.26%	212,036	1.99%	214,132	1.92%	226,866	233,512	1.93%
JETBLUE	21,167	2.34%	26,549	2.82%	235,121	2.21%	298,184	2.67%	252,333	320,085	2.65%
KLM ROYAL DUTCH	-	0.00%	-	0.00%	13,431	0.13%	19,955	0.18%	13,431	19,955	0.17%
SOUTHWEST	93,068	10.29%	95,630	10.17%	1,133,681	10.64%	1,147,835	10.29%	1,227,275	1,241,514	10.28%
UNITED	41,436	4.58%	41,054	4.37%	516,049	4.84%	568,584	5.10%	561,037	619,552	5.13%
US AIRWAYS	-	0.00%	-	0.00%	-	0.00%	-	0.00%	23,305	-	0.00%
Charters	622	0.07%	697	0.07%	5,191	0.05%	7,210	0.06%	5,598	8,439	0.07%
TOTAL ENPLANEMENTS	904,739	100%	939,969	100%	10,652,846	100%	11,151,750	100%	11,526,564	12,081,421	100%

PERCENT CHANGE YOY

	NOVEMBER 2016	NOVEMBER 2017	PERCENT CHANGE	YTD 2016	YTD 2017	PERCENT CHANGE	12 MO ROLLING Ending 11/2016	12 MO ROLLING Ending 11/2017	PERCENT CHANGE
AIR CANADA	630	-	-100.00%	12,346	17,393	40.88%	12,346	18,100	46.61%
ALASKA	31,931	28,421	-10.99%	388,638	368,386	-5.21%	419,441	401,365	-4.31%
AMERICAN	46,972	53,494	13.88%	685,939	701,934	2.33%	718,088	758,501	5.63%
DELTA	648,717	672,834	3.72%	7,450,414	7,808,137	4.80%	8,066,844	8,460,398	4.88%
FRONTIER	20,196	21,290	5.42%	212,036	214,132	0.99%	226,866	233,512	2.93%
JETBLUE	21,167	26,549	25.43%	235,121	298,184	26.82%	252,333	320,085	26.85%
KLM ROYAL DUTCH	-	-	0.00%	13,431	19,955	48.57%	13,431	19,955	48.57%
SOUTHWEST	93,068	95,630	2.75%	1,133,681	1,147,835	1.25%	1,227,275	1,241,514	1.16%
UNITED	41,436	41,054	-0.92%	516,049	568,584	10.18%	561,037	619,552	10.43%
US AIRWAYS	-	-	0.00%	-	-	0.00%	23,305	-	-100.00%
Charters	622	697	12.06%	5,191	7,210	38.89%	5,598	8,439	50.75%
TOTAL ENPLANEMENTS	904,739	939,969	3.9%	10,652,846	11,151,750	4.7%	11,526,564	12,081,421	4.8%

**SALT LAKE CITY INTERNATIONAL AIRPORT
LANDING ACTIVITY
ELEVEN MONTHS ENDED NOVEMBER 2017**

	NOVEMBER 2016	NOVEMBER 2017	CHANGE	YTD 2016	YTD 2017	CHANGE	12 MO ROLLING Ending 11/2017	% CHANGE
TOTAL NUMBER OF LANDINGS								
SCHEDULED CARRIERS								
AEROMEXICO	-	-	0.0%	1	-	-100.0%	-	-100.0%
AIR CANADA	17	-	-100.0%	175	230	31.4%	246	40.6%
ALASKA	208	170	-18.3%	2,177	2,149	-1.3%	2,359	0.0%
Horizon Air / Alaska	61	30	-50.8%	917	534	-41.8%	596	-40.9%
Skywest / Alaska	90	89	-1.1%	1,297	1,084	-16.4%	1,173	-17.4%
AMERICAN	261	361	38.3%	4,064	4,229	4.1%	4,592	7.4%
Compass	59	30	-49.2%	784	554	-29.3%	614	-25.9%
American Eagle/Republic	-	-	0.0%	99	-	-100.0%	-	-100.0%
American/Mesa Air	1	-	-100.0%	53	-	-100.0%	1	-98.1%
Envoy Air (American)	5	1	-80.0%	364	18	-95.1%	63	-83.8%
SkyWest (American)	97	88	-9.3%	881	1,448	64.4%	1,509	63.7%
DELTA	3,454	3,627	5.0%	38,265	42,600	11.3%	46,045	11.5%
SkyWest (Delta Connection)	3,192	2,935	-8.1%	38,125	35,132	-7.9%	38,703	-7.3%
Compass (Delta Connection)	39	224	474.4%	1,798	1,323	-26.4%	1,389	-28.9%
FRONTIER	126	133	5.6%	1,489	1,276	-14.3%	1,396	-12.9%
JETBLUE	155	222	43.2%	1,665	2,268	36.2%	2,452	36.4%
KLM ROYAL DUTCH AIRLINES	-	-	0.0%	69	93	34.8%	93	34.8%
SOUTHWEST	808	865	7.1%	8,943	10,165	13.7%	10,981	12.8%
UNITED	136	114	-16.2%	1,575	1,968	25.0%	2,194	25.4%
Express Jet	1	-	-100.0%	15	2	-86.7%	2	-86.7%
Mesa / United Express	5	55	1000.0%	33	209	533.3%	223	537.1%
Republic Airways Holdings	31	23	-25.8%	210	561	167.1%	592	167.9%
SkyWest (United Express)	355	353	-0.6%	4,458	4,021	-9.8%	4,353	-10.4%
Shuttle America (United Express)	7	-	-100.0%	147	-	-100.0%	-	-100.0%
Trans States	4	1	-75.0%	75	7	-90.7%	16	-78.7%
US AIRWAYS	-	-	0.0%	-	-	0.0%	-	-100.0%
SUBTOTAL SCHEDULED CARRIERS:	9,112	9,321	2.3%	107,679	109,871	2.0%	119,592	2.2%
CHARTER CARRIERS								
ALLEGIAN AIR	2	2	0.0%	12	10	-16.7%	11	-15.4%
BIGHORN AIRWAYS	-	-	0.0%	3	-	-100.0%	-	-100.0%
BOMBARDIER BUSINESS JETS	14	10	-28.6%	196	212	8.2%	250	9.2%
BOUTIQUE AIR	105	82	-21.9%	1,018	1,215	19.4%	1,320	29.7%
D&D AVIATION	-	-	0.0%	56	-	-100.0%	-	-100.0%
DELTA PRIVATE JETS	14	13	-7.1%	155	198	27.7%	219	28.1%
EXECUTIVE JET MANAGEMENT	4	10	150.0%	90	115	27.8%	134	31.4%
FLIGHT OPTIONS	4	2	-50.0%	121	96	-20.7%	108	-20.0%
KEYLIME AIR	2	-	-100.0%	23	8	-65.2%	9	-64.0%
NETJETS	67	77	14.9%	1,090	1,191	9.3%	1,335	9.7%
SIERRA PACIFIC	-	-	0.0%	7	8	14.3%	8	14.3%
SUNSET AVIATION	2	1	-50.0%	24	52	116.7%	54	107.7%
SWIFT AIR	-	2	100.0%	21	13	-38.1%	19	-17.4%
XOJET	10	14	40.0%	163	173	6.1%	202	13.5%
OTHER CHARTER	48	71	47.9%	842	1,012	20.2%	1,137	22.0%
SUBTOTAL CHARTER CARRIERS:	272	284	4.4%	3,821	4,303	12.6%	4,806	16.0%
CARGO CARRIERS								
ABX AIR (DHL)	-	-	0.0%	1	-	-100.0%	-	-100.0%
AERO CHARTER & TRANSPORT	21	22	4.8%	230	240	4.3%	262	4.0%
AIR TRANSPORT INTERNATIONAL	3	2	-33.3%	4	8	100.0%	10	150.0%
AMERIFLIGHT	296	272	-8.1%	3,572	2,918	-18.3%	3,260	-17.7%
CORPORATE AIR (BILLINGS)	-	-	0.0%	1,162	1,200	3.3%	1,335	4.1%
EMPIRE	17	18	5.9%	188	185	-1.6%	202	-1.9%
FEDERAL EXPRESS	145	136	-6.2%	1,545	1,454	-5.9%	1,625	-7.9%
SOUTHERN AIR	44	43	-2.3%	509	478	-6.1%	527	-5.6%
UPS	110	123	11.8%	1,019	1,213	19.0%	1,369	16.1%
WESTERN AIR EXPRESS	43	13	-69.8%	388	303	-21.9%	338	-19.5%
OTHER CARGO	68	105	54.4%	350	1,053	200.9%	1,175	233.8%
SUBTOTAL CARGO CARRIERS:	747	734	-1.7%	8,968	9,052	0.9%	10,103	1.2%
TOTAL LANDINGS	10,131	10,339	2.1%	120,468	123,226	2.3%	134,501	2.5%
TOTAL LANDED WEIGHT								
SCHEDULED CARRIERS								
AEROMEXICO	-	-	0.0%	94,798	-	-100.0%	-	-100.0%
AIR CANADA	1,649,000	-	-100.0%	16,975,000	22,310,000	31.4%	23,862,000	40.6%
ALASKA	30,551,900	25,302,100	-17.2%	307,568,900	317,598,800	3.3%	348,517,900	5.0%
Horizon Air / Alaska	3,766,750	1,852,500	-50.8%	56,624,750	33,502,780	-40.8%	37,331,280	-40.1%
Skywest / Alaska	6,746,130	6,615,259	-1.9%	91,592,340	79,652,312	-13.0%	86,307,571	-13.8%
AMERICAN	37,450,900	51,078,856	36.4%	588,771,034	619,464,416	5.2%	671,770,116	8.9%
Compass	4,422,050	2,248,500	-49.2%	58,760,800	41,522,300	-29.3%	46,019,300	-25.9%
American Eagle/Republic	-	-	0.0%	7,420,050	-	-100.0%	-	-100.0%
Envoy Air (American)	309,220	74,950	-75.8%	24,344,340	1,341,150	-94.5%	4,601,050	-82.4%
American/Mesa Air	73,500	-	-100.0%	3,895,500	-	-100.0%	73,500	-98.1%
SkyWest (American)	6,379,000	5,896,000	-7.6%	50,387,000	96,836,000	92.2%	100,923,000	92.9%

**SALT LAKE CITY INTERNATIONAL AIRPORT
LANDING ACTIVITY
ELEVEN MONTHS ENDED NOVEMBER 2017**

	NOVEMBER 2016	NOVEMBER 2017	CHANGE	YTD 2016	YTD 2017	CHANGE	12 MO ROLLING Ending 11/2017	% CHANGE
DELTA	529,219,200	541,958,944	2.4%	5,952,064,820	6,374,714,155	7.1%	6,909,289,179	7.5%
SkyWest (Delta Connection)	190,361,540	176,533,622	-7.3%	2,272,461,031	2,100,632,686	-7.6%	2,314,273,227	-7.1%
Compass (Delta Connection)	2,917,573	16,839,648	477.2%	134,600,778	99,367,459	-26.2%	104,317,677	-28.7%
FRONTIER	19,216,320	19,781,028	2.9%	206,025,768	193,199,744	-6.2%	211,690,982	-4.4%
JETBLUE	22,041,000	31,568,400	43.2%	236,761,856	322,509,226	36.2%	348,674,026	36.4%
KLM ROYAL DUTCH AIRLINES	-	-	0.0%	27,669,000	39,576,150	43.0%	39,576,150	43.0%
SOUTHWEST	104,256,000	112,527,600	7.9%	1,161,830,000	1,318,822,000	13.5%	1,423,740,000	12.8%
UNITED	20,028,000	16,123,600	-19.5%	227,298,620	285,880,980	25.8%	317,524,880	26.1%
Express Jet	44,092	-	-100.0%	692,288	88,184	-87.3%	88,184	-87.3%
Mesa / United Express	375,000	4,125,000	1000.0%	2,475,000	15,675,000	533.3%	16,725,000	537.1%
Republic Airways Holdings	2,241,300	1,676,401	-25.2%	15,043,575	40,642,637	170.2%	42,886,954	172.5%
SkyWest (United Express)	24,153,819	24,259,604	0.4%	297,833,547	276,749,605	-7.1%	299,350,166	-7.3%
Shuttle America (United Express)	506,184	-	-100.0%	10,629,864	-	-100.0%	-	-100.0%
Trans States	176,400	53,100	-69.9%	3,209,787	326,700	-89.8%	723,600	-77.5%
US AIRWAYS	-	-	0.0%	-	-	0.0%	-	-100.0%
SUBTOTAL SCHEDULED CARRIERS:	1,006,884,878	1,038,515,112	3.1%	11,755,030,446	12,280,412,284	4.5%	13,348,265,742	4.7%
CHARTER CARRIERS								
ALLEGiant AIR	396,000	279,000	-29.5%	2,142,000	1,395,000	-34.9%	1,593,000	-31.9%
BIGHORN AIRWAYS	-	-	0.0%	27,320	-	-100.0%	-	-100.0%
BOUTIQUE AIR	1,165,570	957,650	-17.8%	10,930,580	13,143,230	20.2%	14,301,210	30.8%
D&D AVIATION	-	-	0.0%	840,650	-	-100.0%	-	-100.0%
DELTA PRIVATE JETS	323,500	315,450	-2.5%	3,972,815	5,183,850	30.5%	5,829,900	35.2%
EXECUTIVE JET MANAGEMENT	196,400	403,600	105.5%	4,137,885	5,480,099	32.4%	6,251,699	36.9%
FLIGHT OPTIONS	82,395	33,730	-59.1%	2,578,290	2,085,340	-19.1%	2,317,590	-21.6%
KEYLIME AIR	63,448	-	-100.0%	729,655	253,794	-65.2%	285,518	-64.0%
NETJETS	1,853,629	2,403,622	29.7%	31,319,837	35,707,339	14.0%	40,155,963	15.2%
SIERRA PACIFIC	-	-	0.0%	743,000	855,000	15.1%	855,000	15.1%
SUN COUNTRY	438,600	146,300	-66.6%	1,462,700	2,047,600	40.0%	2,193,900	50.0%
SWIFT AIR	-	242,000	100.0%	2,541,000	1,008,785	-60.3%	1,897,925	-31.8%
XOJET	323,850	458,850	41.7%	5,274,450	5,655,450	7.2%	6,597,150	14.5%
OTHER CHARTER	1,986,004	3,849,875	93.9%	27,902,482	38,935,907	39.5%	48,704,676	54.4%
SUBTOTAL CHARTER CARRIERS:	6,829,396	9,090,077	33.1%	94,602,664	111,751,394	18.1%	130,983,531	25.9%
CARGO CARRIERS								
ABX AIR (DHL)	-	-	0.0%	320,000	-	-100.0%	-	-100.0%
AERO CHARTER & TRANSPORT	143,850	150,700	4.8%	1,575,500	1,647,070	4.5%	1,797,770	4.1%
AIR TRANSPORT INTERNATIONAL	55,500	36,000	-35.1%	73,500	148,500	102.0%	186,000	153.1%
ALPINE AVIATION	466,900	1,022,000	118.9%	1,336,300	9,358,000	600.3%	10,018,100	649.7%
AMERIFLIGHT	4,109,080	3,861,650	-6.0%	47,020,374	41,491,800	-11.8%	46,351,750	-11.3%
CORPORATE AIR (BILLINGS)	875,500	918,000	4.9%	9,877,000	10,200,000	3.3%	11,347,500	4.1%
EMPIRE	614,635	672,616	9.4%	6,733,405	6,797,805	1.0%	7,532,483	2.0%
FEDEX EXPRESS	47,856,900	47,381,000	-1.0%	507,819,100	497,677,700	-2.0%	556,469,300	-4.3%
SOUTHERN AIR INC	5,324,000	5,249,384	-1.4%	62,305,255	58,058,324	-6.8%	63,990,223	-6.4%
UPS	33,408,220	36,681,060	9.8%	314,271,180	356,527,460	13.4%	407,822,520	11.2%
WESTERN AIR EXPRESS	542,900	155,400	-71.4%	4,994,600	3,796,100	-24.0%	4,251,100	-21.4%
OTHER CARGO	283,515	1,645,400	480.4%	3,167,142	14,948,974	372.0%	15,724,139	388.1%
SUBTOTAL CARGO CARRIERS:	93,681,000	97,773,210	4.4%	959,493,356	1,000,651,733	4.3%	1,125,490,885	2.4%
TOTAL LANDINGS	1,107,395,274	1,145,378,399	3.4%	12,809,336,466	13,393,787,411	4.6%	14,605,712,158	4.7%

**SALT LAKE CITY INTERNATIONAL AIRPORT
CARGO ACTIVITY REPORT
ELEVEN MONTHS ENDED NOVEMBER 2017**

	NOVEMBER 2016	NOVEMBER 2017	CHANGE	YTD 2016	YTD 2017	CHANGE	12 MO ROLLING Ending 11/2017	% CHANGE
ENPLANED CARGO								
PASSENGER CARRIERS								
ALASKA	8,691	19,800	127.82%	127,324	164,861	29.48%	166,556	23.04%
Horizon Air / Alaska	93	52	-44.09%	1,418	928	-34.56%	928	-40.66%
Skywest / Alaska	1,997	-	-100.00%	12,789	1,030	-91.95%	1,060	-92.45%
AMERICAN	40,792	50,628	24.11%	417,346	237,679	-43.05%	247,670	-49.21%
American Eagle/Republic	-	-	0.00%	273	-	-100.00%	-	-100.00%
Compass	1	-	-100.00%	2	-	-100.00%	-	-100.00%
Envoy Air (American)	-	-	0.00%	604	-	-100.00%	280	-60.95%
Mesa	-	-	0.00%	8	-	-100.00%	-	-100.00%
SkyWest (American)	131	-	-100.00%	2,442	479	-80.38%	479	-80.38%
DELTA	814,268	1,264,558	55.30%	8,145,913	12,171,694	49.42%	13,269,799	47.77%
KLM ROYAL DUTCH	-	-	0.00%	346,267	400,078	15.54%	400,078	15.54%
SOUTHWEST	327,682	275,848	-15.82%	3,942,743	3,468,613	-12.03%	3,730,792	-13.27%
UNITED	7,458	9,625	29.06%	104,435	59,380	-43.14%	64,484	-41.80%
US AIRWAYS	-	-	0.00%	-	-	0.00%	-	-100.00%
Others	-	-	0.00%	20,200	345	-98.29%	345	-98.29%
CARGO CARRIERS								
ABX AIR (DHL)	-	-	0.00%	16,001	-	-100.00%	-	-100.00%
FEDEX EXPRESS*	7,409,459	7,852,848	5.98%	83,617,020	82,708,225	-1.09%	91,281,390	-2.18%
GEM AIR	16,560	45,415	174.25%	169,801	365,497	115.25%	429,632	153.02%
SOUTHERN AIR	350,579	491,678	40.25%	3,985,972	4,207,304	5.55%	4,555,426	4.89%
UPS	4,120,555	4,404,357	6.89%	40,033,052	42,844,102	7.02%	48,278,699	6.49%
MISC CARGO	691,344	971,676	40.55%	8,113,972	14,737,715	81.63%	15,688,999	73.18%
TOTAL ENPLANED CARGO	13,789,610	15,386,485	11.58%	149,057,582	161,367,930	8.26%	178,116,617	6.87%
DEPLANED CARGO								
PASSENGER CARRIERS								
ALASKA	18,952	27,431	44.74%	230,758	266,404	15.45%	289,322	17.65%
Horizon Air / Alaska	684	214	-68.71%	3,589	5,032	40.21%	5,259	21.51%
Skywest / Alaska	454	1,273	180.40%	20,174	6,800	-66.29%	7,019	-68.25%
AMERICAN	43,315	33,372	-22.96%	366,398	389,318	6.26%	419,417	6.03%
American Eagle/Republic	-	-	0.00%	1,570	-	-100.00%	-	-100.00%
Compass	-	-	0.00%	694	6,826	883.57%	6,826	883.57%
Envoy Air (American)	-	-	0.00%	72	-	-100.00%	151	104.05%
SkyWest (American)	519	49	-90.56%	4,023	6,388	58.79%	6,388	58.79%
DELTA	1,492,789	1,516,070	1.56%	12,626,162	16,096,273	27.48%	17,715,461	28.12%
KLM ROYAL DUTCH	-	-	0.00%	491,488	894,108	81.92%	894,108	81.92%
SOUTHWEST	341,183	346,986	1.70%	4,432,436	4,255,430	-3.99%	4,587,929	-5.33%
UNITED	24,683	29,902	21.14%	284,807	298,533	4.82%	332,484	5.94%
US AIRWAYS	-	-	0.00%	-	-	0.00%	-	-100.00%
Others	-	382	100.00%	-	32,947	100.00%	44,558	100.00%
CARGO CARRIERS								
ABX AIR (DHL)	-	-	0.00%	1,069	-	-100.00%	-	-100.00%
FEDEX EXPRESS*	8,155,361	8,926,900	9.46%	84,942,293	91,113,345	7.26%	100,807,595	7.71%
GEM AIR	12,039	21,834	81.36%	149,732	200,255	33.74%	211,761	41.43%
SOUTHERN AIR	465,373	537,323	15.46%	5,087,028	4,836,083	-4.93%	5,474,434	-2.62%
UPS	5,620,009	6,697,803	19.18%	55,400,315	61,887,174	11.71%	68,768,740	10.31%
MISC CARGO	382,157	303,549	-20.57%	4,139,564	3,422,817	-17.31%	3,905,674	-14.94%
TOTAL DEPLANED CARGO	16,557,518	18,443,088	11.39%	168,182,172	183,717,733	9.24%	203,477,126	9.13%
TOTAL CARGO	30,347,128	33,829,573	11.48%	317,239,754	345,085,663	8.78%	381,593,743	8.06%

*FEDEX EXPRESS includes mail



Salt Lake City
Department of Airports

COMPARISON OF ON TIME OPERATIONS OCTOBER 2017

ARRIVALS

Airport		Flights	% On Time	Rank
SLC	SALT LAKE CITY INTL	9,323	90.1	1
IAD	WASHINGTON DULLES	3,193	89.9	2
BWI	BALTIMORE/WASHINGTON INTL	8,564	89.0	3
MSP	MINNEAPOLIS-ST. PAUL INTL	12,064	88.9	4
DTW	DETROIT METRO WAYNE CNTY	11,227	88.7	5
ATL	HARTSFIELD-JACKSON ATLANTA INTL	29,844	88.4	6
DFW	DALLAS-FT. WORTH REGIONAL	15,525	88.0	7
IAH	HOUSTON GEORGE BUSH	10,611	87.6	8
PHX	PHOENIX SKY HARBOR INTL	12,555	87.5	9
CLT	CHARLOTTE DOUGLAS	9,802	87.3	10
DEN	DENVER INTL	19,175	86.6	11
MDW	CHICAGO MIDWAY	7,526	86.4	12
STL	ST. LOUIS LAMBERT INTL	4,836	85.8	13
SAN	SAN DIEGO LINDBERGH FIELD	7,181	85.6	14
TPA	TAMPA INTL	5,334	85.2	15
DCA	RONALD REAGAN NATIONAL	6,241	85.1	16
LAS	LAS VEGAS MCCARRAN INTL	13,234	85.1	17
FLL	FT. LAUDERDALE	6,728	84.6	18
ORD	CHICAGO O HARE	23,039	84.5	19
MCO	ORLANDO INTL	10,228	84.3	20
MIA	MIAMI INTL	5,491	84.1	21
PHL	PHILADELPHIA INTL	6,077	84.1	22
PDX	PORTLAND INTL	5,651	84.0	23
LAX	LOS ANGELES INTL	18,398	83.9	24
SEA	SEATTLE-TACOMA INTL	11,685	83.5	25
CVG	CINCINNATI NORTHERN INT. KY	1,735	83.2	26
BOS	BOSTON LOGAN INTL	10,979	80.4	27
LGA	NEW YORK LAGUARDIA	8,223	77.5	28
JFK	NEW YORK JFK INTL	7,577	75.0	29
EWR	NEWARK LIBERTY INTERNATIONAL	9,877	73.7	30
SFO	SAN FRANCISCO INTL	15,583	72.6	31
AVERAGES		10,565	84.5	

DEPARTURES

Airport		Flights	% On Time	Rank
SLC	SALT LAKE CITY INTL	9,323	89.9	1
IAD	WASHINGTON DULLES	3,188	89.5	2
MSP	MINNEAPOLIS-ST. PAUL INTL	12,066	88.7	3
CVG	CINCINNATI NORTHERN INT. KY	1,738	88.3	4
IAH	HOUSTON GEORGE BUSH	10,608	88.2	5
PHX	PHOENIX SKY HARBOR INTL	12,545	87.7	6
DTW	DETROIT METRO WAYNE CNTY	11,223	87.4	7
BWI	BALTIMORE/WASHINGTON INTL	8,562	87.3	8
DFW	DALLAS-FT. WORTH REGIONAL	15,515	87.0	9
DCA	RONALD REAGAN NATIONAL	6,244	86.7	10
CLT	CHARLOTTE DOUGLAS	9,804	86.0	11
ATL	HARTSFIELD-JACKSON ATLANTA INTL	29,842	85.9	12
STL	ST. LOUIS LAMBERT INTL	4,833	85.9	13
SEA	SEATTLE-TACOMA INTL	11,688	85.7	14
PDX	PORTLAND INTERNATIONAL	5,656	85.6	15
PHL	PHILADELPHIA INTL	6,079	85.2	16
SAN	SAN DIEGO LINDBERGH FIELD	7,185	85.0	17
TPA	TAMPA INTERNATIONAL	5,331	85.0	18
DEN	DENVER INTERNATIONAL	19,181	84.7	19
ORD	CHICAGO O HARE	23,039	84.3	20
MIA	MIAMI INTL	5,483	84.0	21
FLL	FT. LAUDERDALE	6,725	83.8	22
MCO	ORLANDO INTL	10,232	83.4	23
BOS	BOSTON LOGAN INTERNATIONAL	10,988	83.1	24
LAX	LOS ANGELES INTL	18,397	83.0	25
LAS	LAS VEGAS MCCARRAN INTL	13,242	82.0	26
MDW	CHICAGO MIDWAY	7,526	81.1	27
JFK	NEW YORK JFK INTL	7,583	80.8	28
EWR	NEWARK LIBERTY INTERNATIONAL	9,881	80.0	29
LGA	NEW YORK LAGUARDIA	8,230	79.8	30
SFO	SAN FRANCISCO INTL	15,584	77.0	31
AVERAGES		10,565	84.9	

ON TIME ARRIVAL PERFORMANCE AT SLC

By Carrier

Air Carrier		Flights	% On Time
DL	DELTA	3,720	93.4%
OO	SKYWEST	3,679	89.6%
AA	AMERICAN	363	88.2%
B6	JETBLUE	208	87.0%
AS	ALASKA	178	86.0%
F9	FRONTIER	109	83.5%
WN	SOUTHWEST	933	83.3%
UA	UNITED	133	82.7%
		9,323	90.1%

Source: DOT Air Travel Consumer Report - Issued December 12, 2017

DESIGN AND CONSTRUCTION REPORT

TABLE OF CONTENTS

- I. Area Map of Project Locations
- II. Project Schedule
- III. Construction Analysis
- IV. Design and Construction Report

SALT LAKE CITY DEPARTMENT OF AIRPORTS

January 8, 2018



Salt Lake City
International Airport

2017 - 2018 Project Legend

Airfield

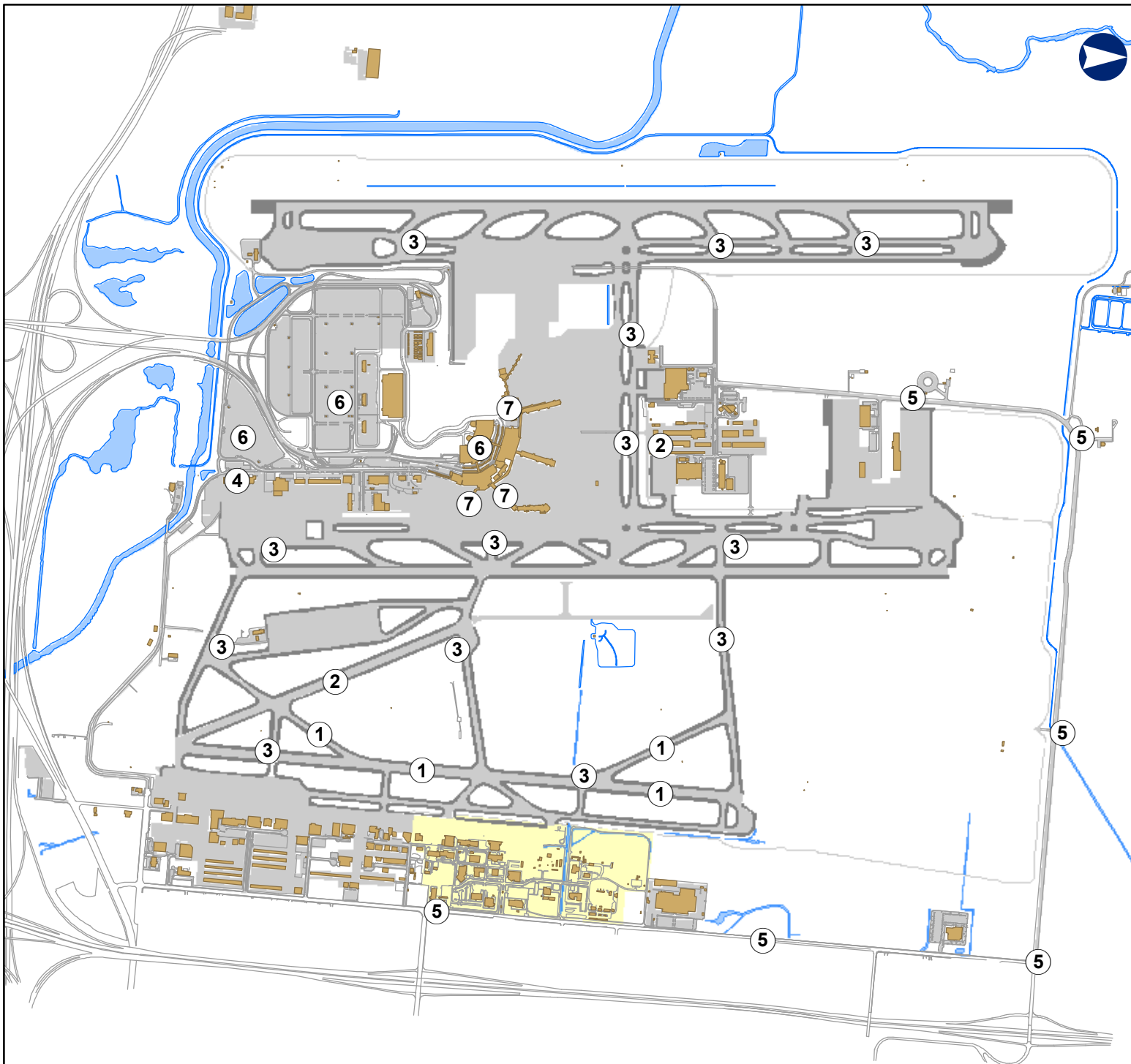
1. R/W 17-35 and T/W P & R Pavement Rehabilitation
2. R/W 14-32 Pavement Rehabilitation
3. Airfield Signage Replacement

Landside

4. Airport Operations Center
5. Fiber Run 2200 W and 2200 N to North Vault
6. Electric Vehicle Charging Stations

Terminal

7. Carpet Replacement - Concourse A, B, & TU3



SALT LAKE CITY INTERNATIONAL AIRPORT
CONSTRUCTION PROGRAM
2016/2017 Construction Schedule

ID	Task Name	Start	Finish												
				Jun '17	Jul '17	Aug '17	Sep '17	Oct '17	Nov '17	Dec '17	Jan '18	Feb '18	Mar '18	Apr '18	
1	Airfield	Mon 8/1/16	Thu 9/13/18												
2	(1) R/W 17-35 & T/W's P & R Pavement Rehabilitation	Mon 8/1/16	Mon 7/31/17												
3	(2) R/W 14-32 Pavement Rehabilitation	Mon 7/10/17	Tue 10/31/17												
4	(3) Airfield Signage Replacement	Tue 8/1/17	Thu 9/13/18												
5	Landside	Wed 6/1/16	Tue 7/24/18												
6	(4) Airport Operations Center	Wed 6/1/16	Thu 11/30/17												
7	(5) Fiber Run 2200 West and 2200 North to North Vault	Mon 8/14/17	Tue 7/24/18												
8	(6) Electric Vehicle Charging Stations	Fri 9/22/17	Sat 2/10/18												
9	Terninal	Thu 12/14/17	Tue 3/13/18												
10	(7) Carpet Replacement - Concoures A, B, and TU3	Thu 12/14/17	Tue 3/13/18												

Date: Fri 1/5/18	Design		DESIGN		Inactive Milestone		Manual Summary	
	Construction		CONSTRUCTION		Inactive Summary		Start-only	
			SCOPING		Manual Task		Finish-only	
			SUMMARY		Duration-only		Deadline	
			Inactive Task		Manual Summary Rollup			

**SALT LAKE CITY DEPARTMENT OF AIRPORTS
CONSTRUCTION PROJECT STATUS 2017 - 2018**

#	PROJECT NAME	ENGINEER'S ESTIMATE	BID AMOUNT	APPROVED CHANGE ORDERS TO DATE	% OF COST INCREASE TO DATE	STATUS	CONTRACTOR
CONSTRUCTION							
1	R/W 17-35 & T/W's P & R Pavement Rehabilitation	\$ 11,525,000	\$ 9,871,843	\$ 121,656	1.23%	subs. complete*	Staker Parson Companies
2	Runway 14-32 Pavement Rehabilitation	\$ 3,696,205	\$ 3,852,800			on schedule	Granite Construction Company
3	Airfield Signage Replacement	\$ 3,916,511	\$ 1,844,679			on schedule	Skyline Electric Company
4	Airport Operations Center	\$ 15,000,000	\$ 16,515,000	\$ 948,294	5.74%	on schedule	Big D Constructon
5	Fiber Run 2200 West and 2200 North to North Vault	\$ 1,960,273	\$ 1,797,585			on schedule	Americom Technology, Inc.
6	Electric Vehicle Charging Stations	\$ 275,220	\$ 305,913			on schedule	Paulsen Constrution
7	Carpet Replacement - Concourses A, B, and TU3	\$ 595,000	\$ 614,200			on schedule	Webb Brothers
	Total	\$ 36,968,209	\$ 34,802,020	\$ 1,069,950	3.07%		
	* Resolving electrical punch list items						
	Budget amount, Engineer's estimate, and Bid amount is based on construction cost only.						

DESIGN AND CONSTRUCTION REPORT

CONSTRUCTION

- (1) **Runway 17-35 and Taxiways P & R Pavement Rehabilitation** - The Contractor is currently working on punch list items as weather permits.
- (2) **Runway 14-32 Pavement Rehabilitation** - The Contractor is currently working on punch list items as weather permits.
- (3) **Airfield Signage Replacement** - This project is in winter shut-down as of December 15, 2017. Work will resume again in the spring of 2018 as weather permits.
- (4) **Airport Operations Center** - This project is nearing completion. Mechanical and electrical equipment testing and commissioning has been finalized. Furniture punch list items are being completed. The IT Contractor is working on final testing of the phone, radio and computer systems.
- (5) **Fiber Run 2200 West and 2200 North to North Vault** - The Contractor is continuing to install the communications and electrical duct banks on Phase 1 of the project. They have completed the duct bank north of 2200 North and are now approximately 90% complete with the new duct bank located inside the secured area. During the winter months, the Contractor has focused their effort towards completing the work inside the GA50 building.
- (6) **Electric Vehicle Charging Stations** - All transformers and panels have been installed. The power connection work to the main distribution center is scheduled for the week of January 8, 2018.
- (7) **Carpet Replacement - Concourses A, B, and TU3** - A notice to proceed was issued to the Contractor, Webb Brothers Construction on December 14, 2017. The carpet has been ordered. Work is anticipated to begin on January 25, 2018 at Terminal Unit 3 upon arrival of the carpet from the mill.



**January 2018
Media Clippings**

Advisory Board Meeting

<https://slairport.com/assets/pdfDocuments/AABoard/MediaClippingsJan2018.pdf>

Compiled by P.R. & Marketing Dept.