

DEPARTMENT OF AIRPORTS
BOARD MEETING

21 June 2017

AGENDA



Salt Lake City Department of Airports

SALT LAKE CITY DEPARTMENT OF AIRPORTS BOARD MEETING AGENDA

21 June 2017

8:00 A.M.

DISCUSSION AGENDA

Tour of the Terminal Redevelopment Program site at the Salt Lake City International Airport. Meet at 8:00 a.m. in the Board Room located on the third level of the short-term parking garage across from Terminal 1. The tour will take place in an active construction site so appropriate attire is required, such as closed toe shoes and long pants.

INFORMATION ITEMS

- A. Financial Report – April 2017
- B. Air Traffic Statistics – April 2017
- C. Comparison of On-Time Operations – March 2017
- D. Construction Report – June 2017
- E. Media Clippings – June 2017

The next meeting will be held on **Wednesday, August 2, 2017**, at 8:00 a.m. Meetings are held in the Board Room located on the third level of the short-term parking garage. People with disabilities may make requests for reasonable accommodations no later than 48 hours in advance in order to attend this Airport Board meeting. Accommodations may include alternate formats, interpreters, and other auxiliary aids. This is an accessible facility. For questions or additional information, please contact LuJean Christensen at 801-575-2096.

DEPARTMENT OF AIRPORTS
BOARD MEETING

21 June 2017

INFORMATIONAL ITEMS

SALT LAKE CITY DEPARTMENT OF AIRPORTS**(An Enterprise Fund of Salt Lake City Corporation)****Statements of Net Position (Unaudited)****(Amounts in thousands)**

<i>April</i>	2017	2016
ASSETS		
Current Assets		
Cash and cash equivalents	\$ 10,000	\$ 10,000
Designated for future development	182,956	186,974
Restricted cash and cash equivalents	18,646	-
Airline and rental fees receivable	16,757	17,269
Other current assets	4,250	3,566
Total current assets	232,609	217,809
Noncurrent Assets		
Restricted cash and cash equivalents	1,162,346	146,765
Noncurrent investments	44,951	44,951
Total noncurrent assets and investments	1,207,297	191,716
Capital assets		
Land	99,348	99,157
Building and improvements	1,278,012	1,177,910
Equipment	140,191	133,821
Construction in progress	415,156	299,022
Total capital assets - at cost	1,932,707	1,709,910
Less accumulated depreciation	921,914	868,904
Net capital assets	1,010,793	841,006
Other assets		
Other receivables	1,192	974
Other long-term assets	17	92
Total other assets	1,209	1,066
Total noncurrent assets	2,219,299	1,033,788
Total Assets	2,451,908	1,251,597
Deferred Outflows of Resources		
Pensions	10,181	3,567
Total assets and deferred outflows of resources	\$ 2,462,089	\$ 1,255,164

SALT LAKE CITY DEPARTMENT OF AIRPORTS**(An Enterprise Fund of Salt Lake City Corporation)****Statements of Net Position (Unaudited)****(Amounts in thousands)**

<i>April</i>	2017	2016
LIABILITIES		
Current Liabilities		
Accounts payable	\$ 5,484	\$ 7,073
Accrued compensation	1,982	1,739
Net OPEB obligation	-	236
Other accrued liabilities	3,412	4,393
Deposits and advance rentals	3,981	4,047
Total current liabilities	14,859	17,488
Noncurrent Liabilities		
Revenue bonds payable	1,126,482	-
Noncurrent compensation liability	3,629	3,683
Net pension liability	25,465	20,232
Other long-term liabilities	4,962	3,785
Total noncurrent liabilities	1,160,538	27,700
Total Liabilities	1,175,397	45,188
Deferred Inflows of Resources		
Pensions	1,937	2,129
NET POSITION		
Restricted for construction projects	153,659	115,207
Restricted for customer facility charges	868	10,888
Restricted for operation and maintenance reserve fund	16,257	15,670
Restricted for renewal and replacement reserve fund	5,000	5,000
Total Restricted	175,784	146,765
Net investment in capital assets	1,010,793	841,006
Unrestricted	98,178	220,076
Net Position	1,284,755	1,207,847
Total liabilities, deferred inflows of resources, and net position	\$ 2,462,089	\$ 1,255,164

SALT LAKE CITY DEPARTMENT OF AIRPORTS
(An Enterprise Fund of Salt Lake City Corporation)
Statements of Revenues, Expenses and Changes in Net Position (Unaudited)
(Amounts in thousands)

for the ten month period ended April,

	2017	2016
Operating Revenues		
Airline revenue	\$ 57,247	\$ 53,382
Terminal concessions	15,133	13,918
Landside concessions	53,236	47,675
Lease revenue	4,560	3,940
General aviation	1,985	1,413
State aviation tax	2,451	2,280
Other revenue	4,245	3,451
Operating revenues	138,857	126,059
Less airline revenue sharing	(9,856)	(7,917)
Total operating revenues	129,001	118,142
Operating Expenses		
Salaries and benefits	40,010	38,401
Materials and supplies	9,147	8,936
Maintenance contracts	6,890	6,802
Charges and services	7,661	7,298
Utilities	5,353	5,445
Inter-governmental	5,173	4,942
Other expense	6,606	1,933
Total operating expenses before depreciation	80,840	73,757
Operating Income Before Depreciation	48,161	44,385
Depreciation and Amortization Expense	54,496	51,588
Operating Loss	(6,335)	(7,203)
Non-Operating Revenues		
Passenger facility charges	38,084	35,191
Customer facility charges	13,430	12,958
Interest income	3,807	1,659
Other income	45	288
Net non-operating income	55,366	50,096
Capital Contributions		
Contributions and grants, principally Airport Improvement Program	13,488	6,973
Total capital contributions	13,488	6,973
Net Position		
Increase in net position	62,520	49,866
Net Position, beginning of period	1,222,235	1,157,981
Net Position, end of period	\$ 1,284,755	\$ 1,207,847

SALT LAKE CITY DEPARTMENT OF AIRPORTS
(An Enterprise Fund of Salt Lake City Corporation)
Operating Revenues and Expenditures to Budget (Unaudited)
(Amounts in thousands)

	JUL - APR 2017 ACTUALS	JUL - APR 2017 BUDGET	SURPLUS/ DEFICIT	PERCENT CHANGE
Revenues				
Landing Fees	\$ 24,865	\$ 22,224	\$ 2,641	11.9%
Fuel Farm	440	440	0	0.0%
Aircraft Remain Overnight Fees	306	234	72	30.9%
Cargo Bldg. & Ramp Use Fee	1,318	1,334	(16)	-1.2%
Security Charges to TSA	160	268	(108)	-40.2%
Extraordinary Service Charges	90	100	(10)	-9.8%
Passenger Loading Bridges	1,368	1,395	(26)	-1.9%
Tenant Telephone Fees	261	308	(47)	-15.1%
Terminal Rents	26,685	26,598	87	0.3%
General Aviation Hangars	969	945	24	2.6%
FBO Hangars/Fuel Oil Royalty	328	521	(194)	-37.1%
Flight Kitchens	1,442	1,144	297	26.0%
Other Buildings & Office Space	4,480	4,459	21	0.5%
Food Service & Vending	9,166	8,420	746	8.9%
News/Gift Shop	4,952	4,636	316	6.8%
Car Rental	22,606	20,673	1,932	9.3%
Leased Site Areas	1,805	1,774	31	1.7%
Auto Parking/Ground Transportation	30,587	29,962	624	2.1%
Advertising	1,015	978	37	3.8%
State Aviation Fuel Tax	2,451	2,246	205	9.1%
Military	115	122	(7)	-5.7%
Glycol Recycling Sales	273	258	14	5.6%
ARFF Training	569	712	(142)	-20.0%
Other	2,606	2,263	343	15.2%
Less: Airline Revenue Sharing	(9,856)	(9,226)	(630)	6.83%
Total Operating Revenues	129,001	122,788	6,211	5.1%
Expenses				
Salary & Wages	27,994	28,411	416	1.5%
Employee Benefits	12,930	12,917	(14)	-0.1%
Maintenance Supplies	6,136	6,257	121	1.9%
Automotive Supplies	1,878	2,465	588	23.8%
Other Supplies	1,133	1,470	337	22.9%
Insurance Premiums	1,589	1,650	61	3.7%
Janitorial Service	5,652	5,658	6	0.1%
Maintenance Contracts	1,238	1,336	97	7.3%
Other Contractual Services	5,254	5,357	103	1.9%
Professional & Tech Service	2,407	3,277	870	26.5%
Utilities	5,353	6,105	752	12.3%
Administrative Service Fee	1,182	1,500	318	21.2%
Aircraft Rescue Fire Fighting	3,991	3,610	(381)	-10.5%
Other Expenses	5,018	5,448	430	7.9%
Operating Expenses Before Capitalized Salaries	81,755	85,461	3,706	4.3%
Capitalized Salaries	915	915	-	0.0%
Total Operating Expenses	80,840	84,546	3,708	4.4%
Operating Income	\$ 48,161	\$ 38,242	\$ 9,920	25.9%

SALT LAKE CITY DEPARTMENT OF AIRPORTS
(An Enterprise Fund of Salt Lake City Corporation)
Operating Revenues and Expenditures to Prior Year (Unaudited)
(Amounts in thousands)

	JUL-APR 2017	JUL-APR 2016	SURPLUS/ (DEFICIT)	PERCENT CHANGE
Revenues				
Landing Fees	\$ 24,865	\$ 21,891	\$ 2,974	13.6%
Fuel Farm	440	440	-	0.0%
Aircraft Remain Overnight Fees	306	207	99	47.8%
Cargo Bldg. & Ramp Use Fee	1,318	1,337	(19)	-1.4%
Security Charges to TSA	160	260	(100)	-38.4%
Extraordinary Service Charges	90	94	(4)	-4.2%
Passenger Loading Bridges	1,368	1,567	(199)	-12.7%
Tenant Telephone Fees	261	292	(30)	-10.4%
Terminal Rents	26,685	25,225	1,461	5.8%
Executive Terminal	-	33	(33)	-100.0%
General Aviation Hangars	969	928	41	4.4%
FBO Hangars/Fuel Oil Royalty	328	460	(132)	-28.8%
Flight Kitchens	1,442	1,149	292	25.4%
Other Buildings & Office Space	4,480	4,447	32	0.7%
Food Service & Vending	9,166	8,410	755	9.0%
News/Gift Shops	4,952	4,556	396	8.7%
Car Rental	22,606	18,049	4,556	25.2%
Leased Site Areas	1,805	1,635	170	10.4%
Auto Parking/Ground Transportation	30,587	29,556	1,030	3.5%
Advertising	1,015	951	64	6.7%
State Aviation Fuel Tax	2,451	2,280	170	7.5%
Military	115	109	6	5.6%
Glycol Recycling Sales	273	259	13	5.1%
ARFF Training	569	723	(153)	-21.2%
Other	2,606	1,197	1,409	117.8%
Less: Airline Revenue Sharing	(9,856)	(7,917)	(1,939)	24.5%
Operating Revenues	129,001	118,142	10,859	9.2%
Expenses				
Salary & Wages	\$ 27,994	27,049	945	3.5%
Employee Benefits	12,930	12,243	687	5.6%
Maintenance Supplies	6,136	6,445	(309)	-4.8%
Automotive Supplies	1,878	1,505	373	24.8%
Other Supplies	1,133	986	147	14.9%
Insurance Premiums	1,589	674	915	135.8%
Janitorial Service	5,652	5,507	145	2.6%
Maintenance Contracts	1,238	1,295	(56)	-4.4%
Other Contractual Services	5,254	3,492	1,762	50.5%
Professional & Tech Service	2,407	3,806	(1,399)	-36.8%
Utilities	5,353	5,445	(92)	-1.7%
Administrative Service Fee	1,182	1,194	(12)	-1.0%
Aircraft Rescue Fire Fighting	3,991	3,748	242	6.5%
Other Expenses	5,018	1,259	3,759	298.6%
Operating Expenses Before Capitalized Salaries	81,755	74,648	7,107	9.5%
Capitalized Salaries	915	891	24	2.7%
Total Operating Expenses	80,840	73,757	7,083	9.6%
Operating Income	\$ 48,161	\$ 44,385	\$ 3,776	8.5%



**SALT LAKE CITY INTERNATIONAL AIRPORT
AIR TRAFFIC STATISTICS AND ACTIVITY REPORT
FOUR MONTHS ENDED APRIL 2017**

	APRIL 2017	CHANGE	YTD 2017	CHANGE	12 MO ROLLING Ending 04/2017	CHANGE
PASSENGERS						
<i>DOMESTIC</i>						
Enplaned	918,878	4.59%	3,711,985	4.75%	11,375,091	4.63%
Deplaned	907,415	4.98%	3,673,757	4.58%	11,349,826	4.49%
TOTAL DOMESTIC	1,826,293	4.78%	7,385,742	4.67%	22,724,917	4.56%
<i>INTERNATIONAL</i>						
Enplaned	38,132	45.92%	130,088	47.77%	417,744	44.33%
Deplaned	40,666	58.75%	133,335	51.75%	429,583	46.03%
TOTAL INTERNATIONAL	78,798	52.27%	263,423	49.75%	847,327	45.19%
TOTAL PASSENGERS	1,905,091	6.15%	7,649,165	5.76%	23,572,244	5.62%
LANDED WEIGHT						
Air Carriers	1,084,463,804	6.56%	4,375,348,064	6.54%	13,205,640,131	6.79%
Cargo Carriers	87,091,804	1.39%	350,751,998	3.29%	1,095,506,092	3.80%
TOTAL LANDED WEIGHT (LBS)	1,171,555,608	6.16%	4,726,100,062	6.29%	14,301,146,223	6.56%
MAIL						
Enplaned	1,898,578	23.27%	7,239,924	4.55%	20,654,080	-10.00%
Deplaned	1,043,185	126.29%	4,010,170	50.16%	11,419,151	1.14%
TOTAL MAIL (LBS)	2,941,763	47.00%	11,250,094	17.25%	32,073,231	-6.32%
CARGO						
Enplaned	13,415,851	-0.76%	55,184,898	-0.35%	165,609,930	-3.39%
Deplaned	15,628,814	2.40%	62,489,759	9.72%	193,479,239	10.46%
TOTAL CARGO (LBS)	29,044,665	0.91%	117,674,657	4.75%	359,089,169	3.61%
MAIL & CARGO						
Enplaned	6,708	-0.77%	27,592	-0.36%	82,805	-3.39%
Deplaned	7,814	2.40%	31,245	9.72%	96,740	10.46%
TOTAL MAIL & CARGO (TONS)	14,522	0.91%	58,837	4.75%	179,545	3.61%
AIRCRAFT OPERATIONS						
Passenger Aircraft	19,978	1.95%	81,404	3.34%	246,084	4.72%
All-Cargo Aircraft	1,588	-3.29%	6,484	1.57%	20,138	5.26%
General Aviation	3,597	-8.87%	15,874	-7.27%	48,197	-4.91%
Military	617	14.90%	2,250	-6.05%	7,059	-9.34%
TOTAL AIRCRAFT OPERATIONS	25,780	0.23%	106,012	1.28%	321,478	2.84%

SALT LAKE CITY INTERNATIONAL AIRPORT
PASSENGER TRAFFIC REPORT
FOUR MONTHS ENDED APRIL 2017

	APRIL 2016	APRIL 2017	% CHANGE	YTD 2016	YTD 2017	% CHANGE	12 MO ROLLING Ending 04/2017	% CHANGE
ENPLANED PASSENGERS								
AIR CANADA	-	1,074	100.00%	-	4,498	100.00%	17,551	100.00%
ALASKA	19,215	24,331	26.63%	81,258	97,265	19.70%	297,910	15.13%
Horizon Air / Alaska	5,173	3,913	-24.36%	21,026	11,841	-43.68%	49,649	-12.75%
Skywest / Alaska	8,071	5,606	-30.54%	30,431	23,177	-23.84%	73,626	-22.41%
AMERICAN	41,301	47,974	16.16%	199,148	218,262	9.60%	616,770	42.31%
American Eagle/Republic	2,941	-	-100.00%	2,941	-	-100.00%	3,935	-86.07%
Compass	5,431	3,200	-41.08%	16,280	15,232	-6.44%	60,927	209.43%
Envoy Air	1,491	-	-100.00%	18,653	1,094	-94.13%	6,231	-71.92%
American/Mesa Air	994	-	-100.00%	1,286	-	-100.00%	1,607	-12.04%
SkyWest (American)	2,018	7,111	252.38%	10,395	28,162	170.92%	67,083	36.07%
DELTA	453,405	510,055	12.49%	1,745,590	1,958,478	12.20%	6,014,346	9.19%
SkyWest (Delta Connection)	171,406	154,410	-9.92%	711,375	642,013	-9.75%	2,110,738	-3.16%
Compass (Delta Connection)	20,535	6,846	-66.66%	41,801	18,437	-55.89%	97,753	-39.89%
FRONTIER	16,400	20,663	25.99%	70,009	88,011	25.71%	249,418	39.19%
JETBLUE	20,625	28,451	37.94%	81,901	112,072	36.84%	287,193	30.12%
KLM ROYAL DUTCH AIRLINES	-	2,708	100.00%	-	3,350	100.00%	16,781	100.00%
SOUTHWEST	95,267	96,827	1.64%	406,177	399,551	-1.63%	1,220,734	1.94%
UNITED	9,543	14,323	50.09%	89,301	118,345	32.52%	261,927	23.97%
Express Jet	148	-	-100.00%	396	-	-100.00%	50	-95.85%
Mesa Airlines (United Express)	73	1,222	1573.97%	973	1,525	56.73%	3,887	-35.18%
Republic Airways (United)	-	3,140	100.00%	900	13,365	1385.00%	27,704	47.72%
Shuttle America (United Express)	1,704	-	-100.00%	3,952	-	-100.00%	5,719	-47.54%
SkyWest (United Express)	28,319	24,248	-14.38%	93,681	84,699	-9.59%	292,549	1.90%
Trans States	298	232	-22.15%	2,929	232	-92.08%	1,215	-58.52%
US AIRWAYS	-	-	0.00%	-	-	0.00%	-	-100.00%
SkyWest (US Airways Express)	-	-	0.00%	-	-	0.00%	-	-100.00%
Charters	291	676	132.30%	1,352	2,464	82.25%	7,532	70.41%
TOTAL ENPLANED PASSENGERS	904,649	957,010	5.79%	3,631,755	3,842,073	5.79%	11,792,835	5.66%
DEPLANED PASSENGERS								
AeroMexico	-	-	0.00%	5	-	-100.00%	-	-100.00%
AIR CANADA	-	1,136	100.00%	-	4,452	100.00%	18,492	100.00%
ALASKA AIR	18,706	23,045	23.20%	79,075	92,633	17.15%	287,448	14.00%
Horizon Air / Alaska	4,993	3,259	-34.73%	20,329	10,889	-46.44%	47,547	-15.12%
Skywest / Alaska	8,314	6,166	-25.84%	32,026	24,258	-24.26%	74,455	-23.53%
AMERICAN	40,112	48,513	20.94%	195,547	214,793	9.84%	615,962	41.94%
American Eagle/Republic	3,068	-	-100.00%	3,068	-	-100.00%	3,914	-86.26%
Compass	5,279	3,450	-34.65%	15,875	14,928	-5.97%	55,701	190.08%
Envoy Air (American)	908	-	-100.00%	17,324	975	-94.37%	6,353	-70.03%
American/Mesa Air	1,028	-	-100.00%	1,407	-	-100.00%	1,803	-12.56%
SkyWest (American)	1,692	6,869	305.97%	9,805	27,178	177.19%	65,620	37.35%
DELTA	447,994	505,436	12.82%	1,726,041	1,938,891	12.33%	6,020,062	9.18%
SkyWest (Delta Connection)	169,279	152,419	-9.96%	711,654	638,715	-10.25%	2,110,711	-3.35%
Compass (Delta Connection)	20,192	6,743	-66.61%	41,168	18,130	-55.96%	96,268	-40.07%
FRONTIER	15,282	20,359	33.22%	69,033	91,154	32.04%	254,134	31.11%
JETBLUE	20,176	27,567	36.63%	80,402	110,618	37.58%	288,030	30.19%
KLM ROYAL DUTCH AIRLINES	-	5,197	100.00%	-	6,296	100.00%	22,160	100.00%
SOUTHWEST	93,453	95,498	2.19%	403,323	396,134	-1.78%	1,220,967	2.00%
UNITED	8,548	12,313	44.05%	89,925	113,927	26.69%	251,381	19.62%
Express Jet	201	-	-100.00%	452	-	-100.00%	-	-100.00%
Mesa Airlines / United Express	74	1,500	1927.03%	1,018	1,706	67.58%	4,125	-36.67%
Republic Airways (United)	-	3,221	100.00%	1,148	13,562	1081.36%	28,976	36.98%
Shuttle America (United Express)	1,740	-	-100.00%	4,032	-	-100.00%	5,801	-47.51%
SkyWest (United Express)	28,394	24,294	-14.44%	92,843	84,988	-8.46%	289,655	3.42%
Trans States	256	221	-13.67%	2,898	221	-92.37%	1,178	-59.35%
US AIRWAYS	-	-	0.00%	-	-	0.00%	-	-100.00%
SkyWest (US Airways Express)	-	-	0.00%	-	-	0.00%	-	-100.00%
Charters	310	875	182.26%	2,295	2,644	15.21%	8,666	35.15%
TOTAL DEPLANED PASSENGERS	889,999	948,081	6.53%	3,600,693	3,807,092	5.73%	11,779,409	5.58%
TOTAL PASSENGERS*	1,794,648	1,905,091	6.15%	7,232,448	7,649,165	5.76%	23,572,244	5.62%
INTERNATIONAL - ENPLANED								
AIR CANADA	-	1,074	100.00%	-	4,498	100.00%	17,551	100.00%
DELTA	20,407	28,654	40.41%	60,804	94,064	54.70%	294,957	45.40%
SkyWest (Delta Connection)	5,725	5,696	-0.51%	27,233	28,176	3.46%	77,323	15.33%
Compass	-	-	0.00%	-	-	0.00%	11,132	-42.53%
KLM ROYAL DUTCH AIRLINES	-	2,708	100.00%	-	3,350	100.00%	16,781	100.00%
Charters	-	-	0.00%	-	-	0.00%	-	-100.00%
TOTAL ENPLANED INTERNATIONAL	26,132	38,132	45.92%	88,037	130,088	47.77%	417,744	44.33%
INTERNATIONAL - DEPLANED								
AeroMexico	-	-	0.00%	5	-	-100.00%	-	-100.00%
AIR CANADA	-	1,136	100.00%	-	4,452	100.00%	18,492	100.00%
DELTA	20,445	28,890	41.31%	61,299	95,117	55.17%	296,923	41.65%
SkyWest (Delta Connection)	5,172	5,443	5.24%	26,562	27,470	3.42%	81,860	21.45%
Compass	-	-	0.00%	-	-	0.00%	10,148	-40.26%
KLM ROYAL DUTCH AIRLINES	-	5,197	100.00%	-	6,296	100.00%	22,160	100.00%
Charters	-	-	0.00%	-	-	0.00%	-	-100.00%
TOTAL DEPLANED INTERNATIONAL	25,617	40,666	58.75%	87,866	133,335	51.75%	429,583	46.03%
TOTAL INTERNATIONAL PASSENGERS	51,749	78,798	52.27%	175,903	263,423	49.75%	847,327	45.19%

*Includes International

SALT LAKE CITY INTERNATIONAL AIRPORT
FOUR MONTHS ENDED APRIL 2017
Based on Total Enplanements

MARKET SHARE											
	APRIL 2016	MARKET SHARE	APRIL 2017	MARKET SHARE	YTD 2016	MARKET SHARE	YTD 2017	MARKET SHARE	12 MO ROLLING Ending 04/2016	12 MO ROLLING Ending 04/2017	MARKET SHARE
AIR CANADA	-	0.00%	1,074	0.11%	-	0.00%	4,498	0.12%	-	17,551	0.15%
ALASKA	32,459	3.59%	33,850	3.54%	132,715	3.65%	132,283	3.44%	410,559	421,185	3.57%
AMERICAN	54,176	5.99%	58,285	6.09%	248,703	6.85%	262,750	6.84%	554,659	756,553	6.42%
DELTA	645,346	71.34%	671,311	70.15%	2,498,766	68.80%	2,618,928	68.16%	7,850,263	8,222,837	69.73%
FRONTIER	16,400	1.81%	20,663	2.16%	70,009	1.93%	88,011	2.29%	192,593	249,418	2.11%
JETBLUE	20,625	2.28%	28,451	2.97%	81,901	2.26%	112,072	2.92%	220,709	287,193	2.44%
KLM ROYAL DUTCH	-	0.00%	2,708	0.28%	-	0.00%	3,350	0.09%	-	16,781	0.14%
SOUTHWEST	95,267	10.53%	96,827	10.12%	406,177	11.18%	399,551	10.40%	1,197,459	1,220,734	10.35%
UNITED	40,085	4.43%	43,165	4.51%	192,132	5.29%	218,166	5.68%	538,165	593,051	5.03%
US AIRWAYS	-	0.00%	-	0.00%	-	0.00%	-	0.00%	192,530	-	0.00%
Charters	291	0.03%	676	0.07%	1,352	0.04%	2,464	0.06%	4,420	7,532	0.06%
TOTAL ENPLANEMENTS	904,649	100%	957,010	100%	3,631,755	100%	3,842,073	100%	11,161,357	11,792,835	100%

PERCENT CHANGE YOY									
	APRIL 2016	APRIL 2017	PERCENT CHANGE	YTD 2016	YTD 2017	PERCENT CHANGE	12 MO ROLLING Ending 04/2016	12 MO ROLLING Ending 04/2017	PERCENT CHANGE
AIR CANADA	-	1,074	100.00%	-	4,498	100.00%	-	17,551	100.00%
ALASKA	32,459	33,850	4.29%	132,715	132,283	-0.33%	410,559	421,185	2.59%
AMERICAN	54,176	58,285	7.58%	248,703	262,750	5.65%	554,659	756,553	36.40%
DELTA	645,346	671,311	4.02%	2,498,766	2,618,928	4.81%	7,850,263	8,222,837	4.75%
FRONTIER	16,400	20,663	25.99%	70,009	88,011	25.71%	192,593	249,418	29.51%
JETBLUE	20,625	28,451	37.94%	81,901	112,072	36.84%	220,709	287,193	30.12%
KLM ROYAL DUTCH	-	2,708	100.00%	-	3,350	100.00%	-	16,781	100.00%
SOUTHWEST	95,267	96,827	1.64%	406,177	399,551	-1.63%	1,197,459	1,220,734	1.94%
UNITED	40,085	43,165	7.68%	192,132	218,166	13.55%	538,165	593,051	10.20%
US AIRWAYS	-	-	0.00%	-	-	0.00%	192,530	-	-100.00%
Charters	291	676	132.30%	1,352	2,464	82.25%	4,420	7,532	70.41%
TOTAL ENPLANEMENTS	904,649	957,010	5.79%	3,631,755	3,842,073	5.79%	11,161,357	11,792,835	5.66%

**SALT LAKE CITY INTERNATIONAL AIRPORT
LANDING ACTIVITY
FOUR MONTHS ENDED APRIL 2017**

	APRIL 2016	APRIL 2017	CHANGE	YTD 2016	YTD 2017	CHANGE	12 MO ROLLING Ending 04/2017	% CHANGE
TOTAL NUMBER OF LANDINGS								
SCHEDULED CARRIERS								
AEROMEXICO	-	-	0.00%	1	-	-100.00%	-	-100.00%
AIR CANADA	-	18	100.00%	-	70	100.00%	261	100.00%
ALASKA	175	205	17.14%	710	812	14.37%	2,489	12.12%
Horizon Air / Alaska	90	59	-34.44%	362	195	-46.13%	812	-19.92%
Skywest / Alaska	150	90	-40.00%	532	373	-29.89%	1,227	-24.02%
AMERICAN	333	361	8.41%	1,527	1,597	4.58%	4,497	40.93%
Compass	82	60	-26.83%	236	244	3.39%	852	201.06%
American Eagle/Republic	45	-	-100.00%	45	-	-100.00%	54	-86.53%
American/Mesa Air	20	-	-100.00%	25	-	-100.00%	29	-14.71%
Envoy Air (American)	23	-	-100.00%	319	14	-95.61%	104	-73.06%
SkyWest (American)	43	124	188.37%	224	475	112.05%	1,193	13.40%
DELTA	3,294	3,781	14.78%	12,703	14,703	15.74%	43,710	12.32%
SkyWest (Delta Connection)	3,338	3,037	-9.02%	13,940	12,601	-9.61%	40,357	-3.14%
Compass (Delta Connection)	298	97	-67.45%	608	244	-59.87%	1,500	-35.18%
FRONTIER	120	115	-4.17%	507	508	0.20%	1,610	17.60%
JETBLUE	142	212	49.30%	572	854	49.30%	2,131	33.27%
KLM ROYAL DUTCH AIRLINES	-	13	100.00%	-	16	100.00%	85	100.00%
SOUTHWEST	787	927	17.79%	3,169	3,538	11.64%	10,128	4.50%
UNITED	73	115	57.53%	718	890	23.96%	1,973	15.72%
Express Jet	4	-	-100.00%	9	-	-100.00%	6	-76.00%
Mesa / United Express	1	20	1900.00%	14	23	64.29%	56	-37.08%
Republic Airways Holdings	-	48	100.00%	16	205	1181.25%	430	39.16%
SkyWest (United Express)	461	400	-13.23%	1,553	1,371	-11.72%	4,608	-2.41%
Shuttle America (United Express)	26	-	-100.00%	60	-	-100.00%	87	-47.59%
Trans States	6	5	-16.67%	63	5	-92.06%	26	-58.73%
US AIRWAYS	-	-	0.00%	-	-	0.00%	-	-100.00%
SkyWest (US Airways)	-	-	0.00%	-	-	0.00%	-	-100.00%
SUBTOTAL SCHEDULED CARRIERS:	9,511	9,687	1.85%	37,913	38,738	2.18%	118,225	3.40%
CHARTER CARRIERS								
ALLEGiant AIR	-	-	0.00%	3	3	0.00%	13	30.00%
BIGHORN AIRWAYS	-	-	0.00%	2	-	-100.00%	1	-83.33%
BOMBARDIER BUSINESS JETS	10	11	10.00%	93	117	25.81%	258	24.64%
BOUTIQUE AIR	117	124	5.98%	125	424	239.20%	1,422	1037.60%
D&D AVIATION	7	-	-100.00%	24	-	-100.00%	32	-49.21%
DELTA PRIVATE JETS	7	8	14.29%	72	77	6.94%	181	11.73%
EXECUTIVE JET MANAGEMENT	6	5	-16.67%	58	56	-3.45%	107	-3.60%
FLIGHT OPTIONS	1	4	300.00%	59	58	-1.69%	132	-23.26%
KEYLIME AIR	3	3	0.00%	8	6	-25.00%	22	-77.55%
NETJETS	70	58	-17.14%	527	610	15.75%	1,317	14.03%
SIERRA PACIFIC	-	1	100.00%	1	4	300.00%	10	233.33%
SUNSET AVIATION	4	7	75.00%	14	20	42.86%	32	6.67%
SWIFT AIR	2	2	0.00%	13	9	-30.77%	23	-17.86%
XOJET	8	11	37.50%	82	97	18.29%	207	26.22%
OTHER CHARTER	52	68	30.77%	391	482	23.27%	1,058	27.32%
SUBTOTAL CHARTER CARRIERS:	287	302	5.23%	1,472	1,963	33.36%	4,815	52.13%
CARGO CARRIERS								
ABX AIR (DHL)	-	-	0.00%	1	-	-100.00%	-	-100.00%
AERO CHARTER & TRANSPORT	21	20	-4.76%	84	85	1.19%	253	-0.78%
AIR TRANSPORT INTERNATIONAL	-	-	0.00%	-	2	100.00%	8	-94.07%
AMERIFLIGHT	351	244	-30.48%	1,357	1,080	-20.41%	3,637	-12.13%
CORPORATE AIR (BILLINGS)	109	107	-1.83%	424	429	1.18%	1,302	2.20%
EMPIRE	17	16	-5.88%	69	65	-5.80%	201	-3.37%
FEDERAL EXPRESS	142	141	-0.70%	547	559	2.19%	1,728	4.47%
SOUTHERN AIR	46	44	-4.35%	184	181	-1.63%	555	98.92%
UPS	87	94	8.05%	356	384	7.87%	1,203	0.25%
WESTERN AIR EXPRESS	26	37	42.31%	103	147	42.72%	467	35.76%
OTHER CARGO	22	91	313.64%	67	310	362.69%	715	866.22%
SUBTOTAL CARGO CARRIERS:	821	794	-3.29%	3,192	3,242	1.57%	10,069	5.29%
TOTAL LANDINGS	10,619	10,783	1.54%	42,577	43,943	3.21%	133,109	4.76%
TOTAL LANDING WEIGHT								
SCHEDULED CARRIERS								
AEROMEXICO	-	-	0.00%	94,798	-	-100.00%	-	-100.00%
AIR CANADA	-	1,746,000	100.00%	-	6,790,000	100.00%	25,317,000	100.00%
ALASKA	24,299,900	30,012,200	23.51%	95,850,900	119,274,700	24.44%	361,911,800	20.51%
Horizon Air / Alaska	5,557,500	3,643,250	-34.44%	22,353,500	12,041,250	-46.13%	50,141,000	-19.92%
Skywest / Alaska	10,439,463	6,522,474	-37.52%	36,748,733	26,521,326	-27.83%	88,020,192	-20.99%
AMERICAN	47,751,200	53,999,500	13.09%	222,797,534	235,152,400	5.55%	653,431,600	43.20%
Compass	6,145,900	4,497,000	-26.83%	17,688,200	18,287,800	3.39%	63,857,400	201.06%
American Eagle/Republic	3,372,750	-	-100.00%	3,372,750	-	-100.00%	4,047,300	-86.53%
Envoy Air (American)	1,541,000	-	-100.00%	21,373,000	1,049,300	-95.09%	7,280,540	-71.85%
American/Mesa Air	1,470,000	-	-100.00%	1,837,500	-	-100.00%	2,131,500	-14.71%

**SALT LAKE CITY INTERNATIONAL AIRPORT
LANDING ACTIVITY
FOUR MONTHS ENDED APRIL 2017**

	APRIL 2016	APRIL 2017	CHANGE	YTD 2016	YTD 2017	CHANGE	12 MO ROLLING Ending 04/2017	% CHANGE
SkyWest (American)	2,101,000	8,308,000	295.43%	10,608,000	31,685,000	198.69%	75,551,000	52.55%
DELTA	510,372,200	559,690,375	9.66%	1,981,705,160	2,196,103,861	10.82%	6,701,038,545	9.48%
SkyWest (Delta Connection)	196,221,800	178,431,057	-9.07%	831,357,100	751,140,159	-9.65%	2,405,884,631	-2.61%
Compass (Delta Connection)	22,368,354	7,277,839	-67.46%	45,521,326	18,251,476	-59.91%	112,281,146	-35.31%
FRONTIER	16,477,192	17,988,482	9.17%	68,559,542	79,196,288	15.51%	235,153,752	25.29%
JETBLUE	20,192,116	30,146,400	49.30%	81,337,256	121,438,800	49.30%	303,028,200	33.25%
KLM ROYAL DUTCH AIRLINES	-	5,532,150	100.00%	-	6,808,800	100.00%	34,477,800	100.00%
SOUTHWEST	100,364,000	120,676,000	20.24%	411,806,000	457,930,000	11.20%	1,312,872,000	6.34%
UNITED	10,290,160	16,563,600	60.97%	102,303,240	127,802,900	24.93%	284,442,180	18.20%
Express Jet	176,368	-	-100.00%	427,736	-	-100.00%	264,552	-76.65%
Mesa / United Express	75,000	1,500,000	1900.00%	1,050,000	1,725,000	64.29%	4,200,000	-37.05%
Republic Airways Holdings	-	3,473,100	100.00%	1,002,312	14,846,134	1381.19%	31,131,714	62.33%
SkyWest (United Express)	30,551,303	27,202,368	-10.96%	100,045,199	93,110,771	-6.93%	313,499,680	4.51%
Shuttle America (United Express)	1,880,112	-	-100.00%	4,338,720	-	-100.00%	6,291,144	-47.59%
Trans States	255,294	220,500	-13.63%	2,680,587	220,500	-91.77%	1,146,600	-57.23%
US AIRWAYS	-	-	0.00%	-	-	0.00%	-	-100.00%
SkyWest (US Airways)	-	-	0.00%	-	-	0.00%	-	-100.00%
SUBTOTAL SCHEDULED CARRIERS:	1,011,902,612	1,077,430,295	6.48%	4,064,859,093	4,319,376,465	6.26%	13,077,401,276	6.54%
CHARTER CARRIERS								
ALLEGiant AIR	-	-	0.00%	418,500	418,500	0.00%	2,340,000	60.94%
BIGHORN AIRWAYS	-	-	0.00%	17,960	-	-100.00%	9,360	-82.63%
BOUTIQUE AIR	1,160,640	1,278,150	10.12%	1,240,000	4,542,570	266.34%	15,391,130	1141.22%
D&D AVIATION	91,630	-	-100.00%	356,530	-	-100.00%	484,120	-49.00%
DELTA PRIVATE JETS	129,050	219,200	69.86%	1,801,100	2,211,400	22.78%	5,029,165	23.49%
EXECUTIVE JET MANAGEMENT	335,935	189,250	-43.66%	2,988,935	2,806,400	-6.11%	4,726,950	-11.10%
FLIGHT OPTIONS	16,865	82,395	388.56%	1,301,485	1,226,235	-5.78%	2,735,290	-29.81%
KEYLIME AIR	95,175	95,172	0.00%	253,795	190,344	-25.00%	697,928	-75.63%
NETJETS	2,067,510	1,877,186	-9.21%	15,779,663	18,550,877	17.56%	38,539,675	18.55%
SIERRA PACIFIC	-	110,000	100.00%	107,000	435,000	306.54%	1,071,000	242.17%
SUN COUNTRY	-	-	0.00%	-	1,462,400	100.00%	3,071,400	1999.38%
SWIFT AIR	242,000	242,000	0.00%	1,573,000	687,925	-56.27%	2,381,925	-20.25%
XOJET	266,100	365,400	37.32%	2,638,200	3,180,150	20.54%	6,758,100	27.64%
OTHER CHARTER	1,409,908	2,574,756	82.62%	13,225,377	20,221,798	52.90%	44,830,812	49.26%
SUBTOTAL CHARTER CARRIERS:	5,814,813	7,033,509	20.96%	41,701,545	55,933,599	34.13%	128,066,855	40.53%
CARGO CARRIERS								
ABX AIR (DHL)	-	-	0.00%	320,000	-	-100.00%	-	-100.00%
AERO CHARTER & TRANSPORT	143,850	137,000	-4.76%	575,400	582,250	1.19%	1,733,050	-0.78%
AIR TRANSPORT INTERNATIONAL	-	-	0.00%	-	37,500	100.00%	148,500	-99.47%
ALPINE AVIATION	-	850,600	100.00%	-	850,600	100.00%	850,600	100.00%
AMERIFLIGHT	4,574,900	3,432,404	-24.97%	17,721,900	15,154,026	-14.49%	49,312,450	-9.07%
CORPORATE AIR (BILLINGS)	926,500	909,500	-1.83%	3,604,000	3,646,500	1.18%	11,067,000	2.20%
EMPIRE	614,635	578,480	-5.88%	2,467,040	2,437,379	-1.20%	7,438,422	-0.72%
FEDEX EXPRESS	46,162,400	46,402,800	0.52%	179,271,600	183,985,200	2.63%	571,324,300	5.20%
SOUTHERN AIR INC	5,629,778	5,324,000	-5.43%	22,672,759	21,906,798	-3.38%	67,471,193	96.65%
UPS	27,313,200	28,465,440	4.22%	111,079,040	116,081,440	4.50%	370,568,640	980.07%
WESTERN AIR EXPRESS	364,000	453,800	24.67%	1,364,500	1,836,200	34.57%	5,921,300	45.26%
OTHER CARGO	167,655	537,780	220.77%	502,175	4,234,105	743.15%	9,670,637	-97.13%
SUBTOTAL CARGO CARRIERS:	85,896,918	87,091,804	1.39%	339,578,414	350,751,998	3.29%	1,095,506,092	3.80%
TOTAL LANDINGS	1,103,614,343	1,171,555,608	6.16%	4,446,215,052	4,726,100,062	6.29%	14,301,146,223	6.56%

**SALT LAKE CITY INTERNATIONAL AIRPORT
CARGO ACTIVITY REPORT
FOUR MONTHS ENDED APRIL 2017**

	APRIL 2016	APRIL 2017	CHANGE	YTD 2016	YTD 2017	CHANGE	12 MO ROLLING Ending 04/2017	% CHANGE
ENPLANED CARGO								
PASSENGER CARRIERS								
ALASKA	9,797	13,254	35.29%	36,373	24,028	-33.94%	116,674	-14.62%
Horizon Air / Alaska	92	193	109.78%	631	193	-69.41%	980	-54.18%
Skywest / Alaska	1,702	30	-98.24%	5,339	977	-81.70%	8,457	-27.96%
AMERICAN	38,797	14,581	-62.42%	158,651	47,625	-69.98%	316,311	-16.00%
American Eagle/Republic	-	-	0.00%	-	-	0.00%	273	-98.09%
Compass	-	-	0.00%	-	-	0.00%	2	-99.89%
Envoy Air (American)	321	-	-100.00%	478	-	-100.00%	406	-65.65%
Mesa	-	-	0.00%	-	-	0.00%	8	100.00%
SkyWest (American)	75	-	-100.00%	1,474	10	-99.32%	978	-88.31%
DELTA	985,225	891,327	-9.53%	3,150,751	4,599,802	45.99%	10,693,069	6.82%
SkyWest (Delta Connection)	-	-	0.00%	-	-	0.00%	-	0.00%
Compass (Delta Connection)	-	-	0.00%	-	-	0.00%	-	0.00%
FRONTIER	-	-	0.00%	-	-	0.00%	-	0.00%
KLM ROYAL DUTCH	-	83,322	100.00%	-	95,180	100.00%	441,447	100.00%
SOUTHWEST	346,111	333,078	-3.77%	1,633,542	1,290,312	-21.01%	3,861,692	-15.87%
UNITED	7,153	3,909	-45.35%	26,755	17,092	-36.12%	99,876	21.27%
Express Jet	-	-	0.00%	-	-	0.00%	-	0.00%
SkyWest (Continental Express)	-	-	0.00%	-	-	0.00%	-	0.00%
Shuttle America (United Express)	-	-	0.00%	-	-	0.00%	-	0.00%
US AIRWAYS	-	-	0.00%	-	-	0.00%	-	-100.00%
Mesa (US Airways Express)	-	-	0.00%	-	-	0.00%	-	0.00%
SkyWest (US Airways)	-	-	0.00%	-	-	0.00%	-	-100.00%
Others	-	-	0.00%	-	-	0.00%	20,200	40300.00%
CARGO CARRIERS								
ABX AIR (DHL)	-	-	0.00%	16,001	-	-100.00%	-	-100.00%
FEDEX EXPRESS*	7,497,917	7,476,674	-0.28%	31,839,289	30,377,226	-4.59%	90,728,122	-5.68%
GEM AIR	14,160	25,737	81.76%	44,220	94,365	113.40%	284,081	542.43%
SOUTHERN AIR	351,970	339,105	-3.66%	1,320,958	1,392,590	5.42%	4,405,726	123.30%
UPS	3,517,871	3,430,128	-2.49%	14,168,702	14,146,895	-0.15%	45,445,842	0.24%
MISC CARGO	747,825	804,513	7.58%	2,977,983	3,098,603	4.05%	9,185,786	-26.66%
TOTAL ENPLANED CARGO	13,519,016	13,415,851	-0.76%	55,381,147	55,184,898	-0.35%	165,609,930	-3.39%
DEPLANED CARGO								
PASSENGER CARRIERS								
ALASKA	16,349	19,876	21.57%	55,157	78,630	42.56%	277,149	24.83%
Horizon Air / Alaska	37	679	1735.14%	241	1,844	665.15%	5,419	11.85%
Skywest / Alaska	1,265	15	-98.81%	9,387	1,913	-79.62%	12,919	-49.77%
AMERICAN	22,314	48,969	119.45%	123,251	125,307	1.67%	398,553	44.88%
American Eagle/Republic	1,198	-	-100.00%	1,198	-	-100.00%	372	-86.89%
Compass	-	2,640	100.00%	340	6,422	1788.82%	6,776	1892.94%
Envoy Air (American)	72	-	-100.00%	72	-	-100.00%	151	-39.36%
SkyWest (American)	-	1,618	100.00%	236	4,313	1727.54%	8,100	1431.19%
DELTA	959,571	1,374,616	43.25%	4,217,335	5,606,125	32.93%	15,634,140	10.51%
SkyWest (Delta Connection)	-	-	0.00%	-	-	0.00%	-	0.00%
Mesaba Airlines (Delta Connection)	-	-	0.00%	-	-	0.00%	-	0.00%
Compass (Delta Connection)	-	-	0.00%	-	-	0.00%	-	0.00%
FRONTIER	-	-	0.00%	-	-	0.00%	-	0.00%
KLM ROYAL DUTCH	-	29,686	100.00%	-	48,599	100.00%	540,087	100.00%
SOUTHWEST	415,108	388,678	-6.37%	1,720,935	1,565,063	-9.06%	4,609,063	-12.42%
UNITED	16,153	32,757	102.79%	89,415	131,375	46.93%	360,718	34.20%
Express Jet	-	-	0.00%	-	-	0.00%	-	0.00%
SkyWest	-	-	0.00%	-	-	0.00%	-	0.00%
US AIRWAYS	-	-	0.00%	-	-	0.00%	-	-100.00%
Mesa (US Airways Express)	-	-	0.00%	-	-	0.00%	-	0.00%
Skywest (US Airways)	-	-	0.00%	-	-	0.00%	-	-100.00%
KITTY HAWK CHARTERS	-	-	0.00%	-	-	0.00%	-	0.00%
Others	-	-	0.00%	-	32,265	100.00%	43,876	87652.00%
CARGO CARRIERS								
ABX AIR (DHL)	-	-	0.00%	1,069	-	-100.00%	-	-100.00%
FEDEX EXPRESS*	8,111,997	8,023,658	-1.09%	28,300,848	31,736,896	12.14%	98,072,591	17.77%
GEM AIR	15,797	18,290	15.78%	54,218	56,808	4.78%	163,828	202.17%
SOUTHERN AIR	488,517	517,900	6.01%	1,735,702	1,856,724	6.97%	5,846,401	108.38%
UPS	4,844,331	4,922,335	1.61%	19,198,704	19,792,069	3.09%	62,875,246	3.62%
MISC CARGO	370,007	247,097	-33.22%	1,443,977	1,445,406	0.10%	4,623,850	-42.53%
TOTAL DEPLANED CARGO	15,262,716	15,628,814	2.40%	56,952,085	62,489,759	9.72%	193,479,239	10.46%
TOTAL CARGO	28,781,732	29,044,665	0.91%	112,333,232	117,674,657	4.75%	359,089,169	3.61%

*FEDEX EXPRESS includes mail



Salt Lake City
Department of Airports

COMPARISON OF ON TIME OPERATIONS MARCH 2017

ARRIVALS

Airport	Flights	% On Time	Rank
DCA RONALD REAGAN NATIONAL	6,573	87.9	1
ATL HARTSFIELD-JACKSON ATLANTA INTL	32,430	87.8	2
SLC SALT LAKE CITY INTL	9,979	86.6	3
IAH HOUSTON GEORGE BUSH	11,550	85.1	4
MSP MINNEAPOLIS-ST. PAUL INTL	11,213	84.8	5
CVG CINCINNATI NORTHERN INT. KY	1,418	84.4	6
DFW DALLAS-FT. WORTH REGIONAL	15,493	84.0	7
PHX PHOENIX SKY HARBOR INTL	14,362	84.0	8
IAD WASHINGTON DULLES	2,773	83.3	9
CLT CHARLOTTE DOUGLAS	9,744	83.0	10
DTW DETROIT METRO WAYNE CNTY	10,903	82.6	11
MDW CHICAGO MIDWAY	7,301	82.6	12
DEN DENVER INTL	18,670	82.3	13
MIA MIAMI INTL	6,189	81.9	14
MCO ORLANDO INTL	12,243	81.4	15
TPA TAMPA INTL	6,784	81.3	16
LAS LAS VEGAS MCCARRAN INTL	12,851	81.1	17
PDX PORTLAND INTL	4,946	81.1	18
BWI BALTIMORE/WASHINGTON INTL	8,372	80.9	19
STL ST. LOUIS LAMBERT INTL	4,998	80.7	20
SAN SAN DIEGO LINDBERGH FIELD	6,804	80.5	21
SEA SEATTLE-TACOMA INTL	10,704	79.4	22
FLL FT. LAUDERDALE	8,554	79.0	23
ORD CHICAGO O HARE	21,967	77.9	24
PHL PHILADELPHIA INTL	6,361	77.0	25
BOS BOSTON LOGAN INTL	10,588	73.4	26
SFO SAN FRANCISCO INTL	14,088	71.9	27
JFK NEW YORK JFK INTL	8,312	69.7	28
LAX LOS ANGELES INTL	18,075	66.5	29
EWK NEWARK LIBERTY INTERNATIONAL	9,933	64.7	30
LGA NEW YORK LAGUARDIA	8,311	61.5	31
AVERAGES	10,725	79.62	

DEPARTURES

Airport	Flights	% On Time	Rank
CVG CINCINNATI NORTHERN INT. KY	1,419	86.3	1
SLC SALT LAKE CITY INTL	9,974	86.1	2
ATL HARTSFIELD-JACKSON ATLANTA INTL	32,457	84.9	3
PDX PORTLAND INTERNATIONAL	4,947	84.9	4
MSP MINNEAPOLIS-ST. PAUL INTL	11,214	84.5	5
PHX PHOENIX SKY HARBOR INTL	14,367	84.0	6
SEA SEATTLE-TACOMA INTL	10,725	83.5	7
IAD WASHINGTON DULLES	2,770	83.5	8
SAN SAN DIEGO LINDBERGH FIELD	6,802	83.2	9
IAH HOUSTON GEORGE BUSH	11,543	83.1	10
TPA TAMPA INTERNATIONAL	6,784	82.9	11
CLT CHARLOTTE DOUGLAS	9,739	82.8	12
DEN DENVER INTERNATIONAL	18,659	81.9	13
DTW DETROIT METRO WAYNE CNTY	10,901	81.6	14
DCA RONALD REAGAN NATIONAL	6,571	81.5	15
DFW DALLAS-FT. WORTH REGIONAL	15,496	81.3	16
LAS LAS VEGAS MCCARRAN INTL	12,857	81.2	17
STL ST. LOUIS LAMBERT INTL	4,996	81.0	18
MCO ORLANDO INTL	12,240	80.7	19
MIA MIAMI INTL	6,192	79.8	20
BWI BALTIMORE/WASHINGTON INTL	8,368	79.7	21
MDW CHICAGO MIDWAY	7,302	79.7	22
PHL PHILADELPHIA INTL	6,357	77.9	23
ORD CHICAGO O HARE	21,993	77.2	24
FLL FT. LAUDERDALE	8,545	76.5	25
SFO SAN FRANCISCO INTL	14,087	76.1	26
BOS BOSTON LOGAN INTERNATIONAL	10,596	75.2	27
JFK NEW YORK JFK INTL	8,312	73.1	28
LAX LOS ANGELES INTL	18,077	70.7	29
EWK NEWARK LIBERTY INTERNATIONAL	9,908	68.9	30
LGA NEW YORK LAGUARDIA	8,310	66.7	31
AVERAGES	10,726	80.01	

ON TIME ARRIVAL PERFORMANCE AT SLC

By Carrier

Air Carrier	Flights	% On Time
OO SKYWEST	3,741	88.8%
DL DELTA	3,982	88.0%
UA UNITED	301	88.0%
AS ALASKA	213	82.2%
AA AMERICAN	432	80.6%
WN SOUTHWEST	961	80.1%
F9 FRONTIER	132	78.0%
B6 JETBLUE	217	71.0%
AVERAGES	9,979	86.6%

Source: DOT Air Travel Consumer Report - Issued May 16, 2017

DESIGN AND CONSTRUCTION REPORT

TABLE OF CONTENTS

- I. Area Map of Project Locations
- II. Project Schedule
- III. Construction Analysis
- IV. Design and Construction Report

SALT LAKE CITY DEPARTMENT OF AIRPORTS

June 14, 2017



Salt Lake City
International Airport

2016 - 2017 Project Legend

Airfield

1. R/W 17-35 and T/W P & R Pavement Rehabilitation
2. R/W 14-32 Pavement Rehabilitation
3. Asphalt Overlay Program Phase II
4. North Support Improvements/ Vehicle Gate 22

Landside

5. 2100 North 4000 West Asphalt Overlay
6. Airport Operations Center

Terminal

7. Roof Replacements, Lower Concourse B
8. Passenger Boarding Bridge Replacement (C2,D5 and D7)



**SALT LAKE CITY INTERNATIONAL AIRPORT
CONSTRUCTION PROGRAM
2016/2017 Construction Schedule**

ID	Task Name	Start	Finish	16	Jan '17	Feb '17	Mar '17	Apr '17	May '17	Jun '17	Jul '17	Aug '17	Sep '17	Oct '17	Nov '17
1	Airfield	Mon 8/1/16	Tue 10/31/17												
2	(1) R/W 17-35 & T/W's P & R Pavement Rehabilitation	Mon 8/1/16	Mon 7/31/17												
3	(2) R/W 14-32 Pavement Rehabilitation	Mon 7/10/17	Tue 10/31/17												
4	Landside	Wed 6/1/16	Fri 9/15/17												
5	(3) Asphalt Overlay Program Phase 11	Wed 7/5/17	Fri 9/15/17												
6	(4) North Support Improvements/Vehicle Gate 22	Wed 7/5/17	Fri 9/8/17												
7	(5) 2100 North 4000 West Asphalt Overlay	Mon 5/15/17	Thu 7/20/17												
8	(6) Airport Operations Center	Wed 6/1/16	Tue 8/1/17												
9	Terninal	Thu 6/8/17	Mon 11/27/17												
10	(7) Lower Concourse B Roof Replacement	Mon 6/26/17	Fri 9/8/17												
11	(8) Passenger Boarding Bridge Replacement (C2, D5, and D7)	Thu 6/8/17	Mon 11/27/17												
12	South Valley Regional Airport	Mon 3/20/17	Fri 6/30/17												
13	(9) SVRA R/W 16-34 & T/W A Pavement Rehabilitation	Mon 3/20/17	Fri 6/30/17												

Date: Wed 6/14/17

Design
Construction

DESIGN



Inactive Milestone



Manual Summary



CONSTRUCTION



Inactive Summary



Start-only



SCOPING



Manual Task



Finish-only



SUMMARY



Duration-only



Deadline



Inactive Task



Manual Summary Rollup



**SALT LAKE CITY DEPARTMENT OF AIRPORTS
CONSTRUCTION PROJECT STATUS 2016 - 2017**

#	PROJECT NAME	ENGINEER'S ESTIMATE	BID AMOUNT	APPROVED CHANGE ORDERS TO DATE	% OF COST INCREASE TO DATE	STATUS	CONTRACTOR
CONSTRUCTION							
1	R/W 17-35 & T/W's P & R Pavement Rehabilitation	\$ 11,525,000	\$ 9,871,843	\$ 16,872	0.17%	on schedule	Staker Parsons Companies
3	Asphalt Overlay Program Phase 11	\$ 643,646	\$ 615,296			on schedule	Staker Parsons Companies
5	2100 North & 4000 West Asphalt Overlay	\$ 2,130,518	\$ 1,654,941			on schedule	Staker Parsons Companies
6	Airport Operations Center	\$ 15,000,000	\$ 16,515,000	\$ 670,402	4.06%	on schedule	Big D Construcion
8	Passenger Boarding Bridge Replacement (C2, D5, and D7)	\$ 2,553,000	\$ 2,041,468			on schedule	JBT AeroTech
9	SVRA R/W 16-34 & T/W A Pavement Rehabilitation	\$ 3,381,136	\$ 2,946,149	\$ 6,710	0.23%	on schedule	Geneva Rock Products
	Sub Total	\$ 35,233,300	\$ 33,644,697	\$ 693,984	2.06%		
DESIGN/BID/AWARD							
2	Runway 14-32 Pavement Rehabilitation	\$ 3,696,205	\$ 3,852,800			award	Granite Construction Company
4	North Support Improvements/Vehicle Gate 22	\$ 618,159	\$ 749,950			award	Staker Parsons Companies
7	Lower Concourse B Roof Replacement	\$ 264,000	\$ 269,847			award	Conwest Inc.
	Sub Total	\$ 4,578,364	\$ 4,872,597				
	Total	\$ 39,811,664	\$ 38,517,294				
Budget amount, Engineer's estimate, and Bid amount is based on construction cost only.							

DESIGN AND CONSTRUCTION REPORT

DESIGN/BID/AWARD

- (2) **Runway 14-32 Pavement Rehabilitation** - This project will remove and replace 3-inches of bituminous pavement over the entire length and width of Runway 14-32, the intersecting taxiways up to the hold short lines and the west half of Taxiway P. Existing runway and taxiway incandescent edge lights will be removed in order to pave the existing runway and taxiway shoulders. These lights will be replaced with new energy efficient LED lights. The existing centerline light fixtures, extensions and spacer rings, at the Taxiway Q intersection will also be removed before cold milling the existing wearing surface of the asphalt. After paving, the runway and taxiway surfaces will be grooved and painted and the in-pavement lights reinstalled. The bid opening for this project was held on April 20, 2017. The apparent low bidder is Granite Construction. Contract documents are currently being prepared.
- (4) **North Support Improvements/Vehicle Gate 22** - This project will relocate the vehicle gate arms and card readers at Vehicle Gate 22 to place them in the proper position for drivers to access the card readers without crossing over into the on-coming lanes of traffic. Work will include installation of concrete divider islands, installation of new card readers and vehicle gate arms, widening of the asphalt pavement to provide a pull-out lane for vehicle inspections, installation of new detector loops and miscellaneous electrical work. The bid opening for the project was held on May 11, 2017. The apparent low bidder is Staker Parson Companies. Contract documents are currently being reviewed.
- (7) **Lower Concourse B Roof Replacement** - The lower Concourse B roof has reached the end of its expected lifecycle and warranty period and has developed a number of water leaks requiring replacement of the roof. The apparent low bidder for this project is Conwest Inc. Contract documents are being executed. Work is anticipated to begin on June 26, 2017.

CONSTRUCTION

- (1) **Runway 17-35 and Taxiways P & R Pavement Rehabilitation** - This project is nearing completion. The Contractor is currently working on punch list items.
- (3) **Asphalt Overlay Program Phase 11** - A pre-construction meeting was held on June 9, 2017. The Contractor, Staker Parson Companies was issued an administrative notice to proceed at that time to begin preparing submittals for review by SLCD. A construction notice to proceed for this project is anticipated for July 5, 2017.
- (5) **2100 North 4000 West Asphalt Overlay** - The Contractor is currently paving the outbound lanes of 4000 West and 2100 North. Work will continue through the end of June. After paving is completed, the Contractor will be updating signs, delineators, and installing crash attenuators.
- (6) **Airport Operations Center** - Finish work within the building continues to include painting, ceiling installation and floor finishes. Furniture for the project is scheduled to arrive this week with installation to begin at the end of July, 2017. Communications cabling work is on-going throughout the project and will continue until the project is complete.

- (8) **Passenger Boarding Bridge Replacement (C2, D5, and D7)** - This project will replace the existing fixed pedestal Passenger Boarding Bridges (PBB) at gates C2, D5 and D7 with new Apron Drive PBB's, 400 HZ and new pre-conditioned air units. The contract for this project was awarded to JBT AeroTech with a notice to proceed date of June 8, 2017.
- (9) **SVRA R/W 16-34 & T/W A Pavement Rehabilitation** - The Contractor is currently working on construction of the new Taxiway A1 connector and shoulders. Work is anticipated to be completed by the end of June, 2017.



Salt Lake City
Department of Airports

June, 2017
Media Clippings
Advisory Board Meeting

Compiled by P.R. & Marketing Dept.

SLCDA Airport Advisory Board June 2017		
Date	Media Outlet	Subject
5/17/2017	KSL Radio	Rideshare Groups
5/23/2017	KUTV 2 News	Airport police
5/31/2017	Business Traveller	On-time performance
6/1/2017	KSL TV & Radio	New Park & Wait Lot
6/1/2017	KTVX ABC4 News	New Park & Wait Lot
6/1/2017	KSTU FOX 13	Environmental Youth Award
6/1/2017	W. Jordan City Journal	Advisory Board
6/3/2017	Daily Mail	On-time performance
6/5/2017	KTVX ABC4 News	Environmental Youth Award
6/5/2017	KUTV 2 News	Environmental Youth Award
6/5/2017	The Salt Lake Tribune	TRAX expansion for New SLC
6/5/2017	KUTV 2 News	TRAX expansion for New SLC
6/5/2017	Air Cargo Weekly	Federal Grants
6/5/2017	Global Trade Weekly	Federal Grants
6/6/2017	The Salt Lake Tribune	TRAX expansion for New SLC
6/6/2017	The Salt Lake Tribune	Plane crash at Tooele airport
6/6/2017	KSTU FOX 13	Plane crash at Tooele airport
6/6/2017	KUTV 2 News	Plane crash at Tooele airport
6/7/2017	KSL TV & Radio	Plane crash at Tooele airport
6/8/2017	KSL TV & Radio	Small outside fire at airport
6/8/2017	KSTU FOX 13	Small outside fire at airport
6/13/2017	The Associated Press	Passenger screening canines
6/13/2017	Deseret News	Passenger screening canines
6/13/2017	KTVX ABC4 News	Passenger screening canines
6/13/2017	KSL Radio	Passenger screening canines
6/13/2017	KSTU FOX 13	Passenger screening canines
6/13/2017	KUTV 2 News	Passenger screening canines

Peak summer travel means increased airport security

By **Jasen Lee** @JasenLee1

Published: June 13, 2017 6:00 p.m.

Updated: 14 hours ago

SALT LAKE CITY — With summer air travel season expected to peak in the coming weeks, security at the state's largest airport is ramping up to meet the safety demand.

The Transportation Security Administration and authorities at Salt Lake City International Airport are gearing up to provide enhanced security, particularly during the peak summer travel season.

The TSA projects the number of passengers traveling from Salt Lake City will jump by about 12 percent over this same period last year, and agents at the airport are expected to screen an average of 25,000 people per day, with the busiest period starting in mid-July and continuing through August, explained Lorie Dankers, TSA public affairs manager for Utah.

The busiest days travel days are expected to be Sundays and Mondays, along with Thursdays and Fridays, with peak times at the security checkpoint projected to be from 4:30 a.m. to 10:30 a.m., and 2:30 p.m. to 4:30 p.m., she said. Passengers are advised to plan ahead to limit the impact of the peak travel periods.

"We do recommend during peak travel times that passengers arrive two hours early to allow time to check baggage and check in, come through security and get to your gate," Dankers said during a news conference Tuesday at Salt Lake City International Airport. "With a 12 percent increase, you will find that every step of the process will take you a little more time."

Peak travel months nationally will be June and July, including the Fourth of July weekend. During the busiest days of the summer, the TSA will screen more than 2.5 million passengers per day, she noted.

Among the more pronounced safety measures being implemented at airports across the country will be added canine security officers, including several in Salt Lake City.

"These canines are specially trained to detect explosives and explosive components," Dankers explained. "They are also trained to detect explosive components that are mobile and trained to pinpoint the source of that odor."

The use of passenger screening canines will help the TSA improve the efficiency of the screening process, she said. The dogs are trained to work in bustling transportation environments, employing their keen sense of smell to monitor travelers and their belongings.

The animals will be screening passengers at security checkpoints, making some travelers eligible for expedited screening, Dankers noted.



Sponsored KSL Deals | [Brandview](#)

Dadvice: A field guide to fatherly financial tips

Working canines should not be petted or fed by anyone except their handlers. Nationwide, TSA has nearly 1,000 explosive detection canine teams working at airports, mass transit facilities and maritime locations, she said.

The canine handlers are trained to observe their dog's behavior when the animal detects an explosive scent, often without the source being aware and even if the source is mobile.

"We are in the passenger line, and he is actively sniffing," explained Joanne Vasek, an explosive detection canine handler and transportation security specialist. "It really speeds up the line when we're in it."

Vasek, who began her career as a canine handler in the U.S. Navy as a military police officer, works with Bruce, a 4-year-old fox Labrador retriever. She said Bruce is well-suited for his duties because he loves his job so much.

"He's a great partner. He just wants to work for his 'paycheck,' which is his (Nerf Frisbee) toy," Vasek said.

The dogs are tethered to their handlers and can often be seen working in close proximity to passengers at the airport. If a dog alerts the handler of something suspicious, there is an established protocol in place to resolve the issue, Vasek said.

The explosive detection teams complete 12 weeks of intensive training at Lackland Air Force Base in San Antonio, Texas. The teams are regularly tested and must maintain certification annually to continue their duties, explained

Sgt. Larry Kuivila, canine trainer and supervisor for the Salt Lake City International Airport Police Department.

"They bring a highly reliable explosive detection capability," Kuivila said. "They're not trained as attack dogs or patrol; they are single-purpose detection canines."

Airport police canine teams work in the lobby and baggage areas, or near and on the aircraft, in conjunction with the TSA teams that screen passengers, he said.

"Our teams are used for bomb threats and things of that nature," Kuivila said. "There is also a huge deterrence factor. If we can deter someone from ever bringing explosives in here in the first place, then we're way ahead of the curve."

TSA enlists canines to screen passengers during busy season

Summer expected be 12% busier than last year

By: KIERRA DOTSON ✉ (<mailto:kdotsen@good4utah.com>)

Posted: Jun 13, 2017 03:09 PM MDT

Updated: Jun 13, 2017 11:01 PM MDT



SALT LAKE CITY, Utah (ABC4 Utah)- This summer is expected to be especially busy at Salt Lake International Airport.

The Transportation Security Administration (TSA) say they expect the number of passengers to increase by 12 percent compared to last year.

The busiest days are expected to be Sundays, Mondays, Thursdays, and Fridays. Peak times are projected to be 4:30 a.m.-10:30 a.m. and again at 2:30 p.m. until 4:30 p.m.

To assist in the efficiency of the screening process TSA will be using Passenger Screening Canines (PSCs). These canines are trained to sniff passenger's belongings for explosives and other threats.

"It's very tempting to want to pet these dogs, but keep in mind that they are a working dog and anytime we distract them it keeps them from their main mission which is to look for any of those explosive components or anything else they might sense," TSA Public Affairs Manager Lorie Dankers said.

The dogs will be tethered to their handlers. If the dog alerts its handler to something the proper protocol will be followed.

Transcript

[More Text](#) | [Add to My Clips](#) | [Email Video/Transcript](#)[Zoom](#)☐ [Include In Report](#)**KSL-AM (Radio) - Salt Lake City, UT**

Buffering 6/13/2017 11:05:10 PM

KSL 6/13/2017 11:05:15 PM: ...give the man's name telling a dispatcher she was worried he would retaliate 3 days later that same man opened fire on her a woman and 3 children killing memorandum member has and her warm sun T.S.A. agents and **Salt Lake City** International airport bringing new employees to help sniff out **explosives dogs** T.S.A. specialist joined ask says the canines go through 6 months training before hitting the job pretty much we do a lot of training to become proficient and to make it fun than August they don't like their jobs and one com so everything we do is this a good time for them Buffett says handlers are trained to know if a dog smells explosives telling passengers not to bet we're trying to play with those animal his cells top national story this hour from ABC News T.S.A. launching a test program this week using fingerprints to identify travelers should Yes announcing test for a new checkpoint screening procedure at Atlanta's Hartsfield-Jackson international airport and wanted Denver **International** airport starting this week that we utilize passengers fingerprinted service both their boarding pass and form of identity the programmes being rolled out from members the T.S.A. PreCheck program and matched fingerprints those travelers provided on the PreCheck application the T.S.A. says the technology has the potential to automate the security checkpoint process participation is voluntary markram large ABC News coming up on KSL Newsradio it's gonna start warming up again not do that though we'll check if this forecast there's always time 11 oh 5 if he's still refinance your mortgage we'll see you may be kicking yourself ahead I'm was the Westland financial interest rates have gone up recently it will continue to rise but they're still at historical lows snow delay less lower your monthly payment consolidated first and second half brother dead drop into a 15 year loan note closing costs that's right nothing's rolled in your loan will pay your praise old underwriting settlement fee everything do not miss out on this historic opportunity whether to purchase 3 financial pain no closing cost you won't spend a dime think about it all takes a 5 minute phone call by helping save hundreds or even thousands of dollars a year and by the way Westland financial now is proud to offer reverse mortgages for clients over 62 to cause 84.5 36 69 dated 8 4.5 36 69 it's the biggest no brainer history mankind call it eightyeight_. 4.5 36 69 that's dated 8 4.5 36 69 in 4 under ...

[Clip Editor](#)

* This copy is real time computer generated. Your keyword is highlighted, other text will vary in accuracy due to speaker dialect and audio quality issues.

Transcript

[More Text](#) | [Add to My Clips](#) | [Email Video/Transcript](#)[Zoom](#)☐ **Include In Report****KSTU-SLC (FOX) - Salt Lake City, UT**
FOX 13 News at 4:30

+ Local Market Viewership: 34,083
Local Publicity Value:
\$2,144.85 per 30s

KSTU 6/13/2017 4:37:55 PM: ...numbers

show utah is still below the national average. the data was collected from the board of education, the health department, workforce services, and census bureau. with the days getting busier at the salt lake

international airport, specially trained k-9 are there to help keep security under

control. these dog are part of the national explosives detection canine team

program. they are strictly trained to detect explosive odor and alert it handler of any

findings. canine trainers says it's important

to remember the purpose these dogs fulfill

at the airport. if they do come up and

sniff your bag dont try and pet them. feel

free to interact with a handlers, you can

ask them questions or anything, we just dont

want to distract the canine from doing its

job. there are currently four k-9 teams at the

salt lake international airport. airport police

say they expect to have a fifth team by 20-18. the department of public safety kicks off their third safety fair this week.. and

it's expected to be bigger than ever. they say it's never too early to start talking to your kids about important safety issues...

and it might not be a bad reminder for you either... organizers say there will be 60 booths at the fair from everything safety

to everything fun... including a dunk tank.. along with a few other things worth mentioning... seatbelt use is really big

this time of year... distracted driving... bci the bureau of investigations is going to have a booth with child id kits.. if you don't

have one of those for your family yet you might wanna get one of those. the fair is tomorrow from 3 to 7 pm. the information is

on your screen... the best part... it's free! how did some doctors in maryland know that a patient's new heart was working just

fine? maryland know that a patient's new heart was working just fine? well, take a look... kid dances after heart transplant 16

year old amari hall started dancing in his hospital bed just six days after heart transplant ...

6/13/2017 4:37:44 PM

[Clip Editor](#)

Transcript

[More Text](#) | [Add to My Clips](#) | [Email Video/Transcript](#)[Zoom](#)☐ **Include In Report****KUTV-SLC (CBS) - Salt Lake City, UT**
2 News at 6:00pm

+ Local Market Viewership: 35,418
Local Publicity Value:
\$4,461.27 per 30s

KUTV 6/13/2017 6:12:37 PM: ...k-

9's, the dogs are a key part in keeping passengers safe everyday. >>> it is a busy time at the airport for police canines the dogs are key part in keeping passengers saved every day. >> they do random sweeps of luggage, vehicles anywhere that the people are in make sure it is safe. >> after a few hours of search time the canines spend the rest of the day training if you see a police k9 please ask travelers not to touch them. officers say if everyone wants to pet and play with them that they will quickly become distracted. >>> the group fighting against .05 law has gathered more than 10,000 signatures. institute is gathering signatures to show support to hopefully repeal the recent passage. right now the petition shows more than 13,000 signatures. the group hopes the petition will encourage loach all -- utah lawmakers to reconsider the law. >>> the first liquor store in seven years just opened in west valley city today. the new store making it the 45th liquor store to open in the state of utah. >>> is about 13,600 square feet so it's really big. -- >> it is about 13,600 square feet so it's really big. >> customers tell us they used to travel to the magna store in taylorsville to purchase alcohol. >>> it is now being called the safest suv the car that earned the highest ratings ever. >> is the first day that yahoo is being run by another company.>> the first official day that yahoo is being run by verizon. the deal was completed today that needs yahoo and since 21 years as a publicly traded company. they plan to bring in a new management team. the email and other digital services will now be run by tim armstrong was been in charge of america online. the deal also in the career for yahoo ceo marissa mayer. >>> sears is cut to set to cut more jobs. it will cut about 400 full-time jobs. is all part of their land to turn business around. more than 60 stores are ...

6/13/2017 6:12:25 PM

[Clip Editor](#)

Passenger Screening Canines

By Rick Bowmer, RB, psalinas | Filed 6/14/2017 1:35:53 AM | AP (Hosted) | Jun 13

Theo sniffs passenger bags along the curbside while working with his canine handler Salt Lake City Airport Police officer Robert Paxton at the Salt Lake City International Airport, Tuesday, June 13, 2017, in Salt Lake City. With summer air travel season expected to peak in the coming weeks, security at the state's largest airport is ramping up to meet the safety demand. These canines are trained to sniff passenger's belongings for explosives and other threats. The use of passenger screening canines will help the TSA improve the efficiency of the screening process. (AP Photo/Rick Bowmer)

Transcript

[More Text](#) | [Add to My Clips](#) | [Email Video/Transcript](#)[Zoom](#) ☐ **Include In Report****KTVX-SLC (ABC) - Salt Lake City, UT**
ABC 4 Utah News Mid-day

+ Local Market Viewership: 7,281

Local Publicity Value: \$583.94 per
30s

KTVX 6/1/2017 11:05:30 AM: ...accident

cleared but still dealing with residual issues. if you are going northbound through utah county, please be aware this is waiting for you. >>> the next time you pick up a friend or family member at the salt Lake Airport, things will look different. a brand new park and wait lot is officially open and the old one is now permanently closed. andrew has more on some of the big changes Airport visitors can expect. >> reporter: the new park and wait lot at the Salt lake international Airport features 120 new parking spaces compared to the 86 the old one had and if you are here at this parking lot waiting for a loved one to deplane, you are going to have some pretty awesome food options, as well. traveling in and out of salt lake -- >> it will just be i think a totally new experience for our travelers. >> has a whole new itinerary. >> we have a lot of

congestion within the gate areas. >> a brand-new park and wait lot opened thursday morning. the old one now closed. >> the reason we are moving it is because we have to capture that space to build the elevated roadway that will enter the new airport. so, come 2020, that space will be now a new roadway. >> it's part of the brand-new salt Lake Airport. one that by 2020 aims to be comparable in size and facility to en's or detroits. according to Airport spokes spokesperson. >> the new Airport will be able to accommodate more passenger traffic as well. >> thursday's change promises more parking spaces for visitors waiting to pick up passengers. >> we always encourage drivers who are coming here to pick up passenger to wait at the park and wait lot just to help with the congestion. >> coming soon, while you wait -- good eats. >> not only will it be a bigger lot, but, come fall, we'll have a convenience store so we'll have a gas station and we will also have some food vendors. we'll have a beans and brew, a costa vita and a burger king. >> this is one of many upgrades. right now the north concourse being constructed and the tunnel between the north and south concourse is being extended. >> thank you, andrew. this evening, trucks will be out spraying for mosquitoes in utah county. they have been monitoring traps around the county and several areas are ready for spring. in fact, they have already started. >> they have lived for millions and millions of years. they have been able to adapt to all kinds of environments. but, these are permanent water or they are -- they live in those kinds of areas and so, we can target those areas to find them. >> the most mosquitoes are found around utah Lake and the ...

6/1/2017 11:06:33 AM

[Clip Editor](#)

Transcript

[More Text](#) | [Add to My Clips](#) | [Email Video/Transcript](#)[Zoom](#)☐ [Include In Report](#)

KSL-SLC (NBC) - Salt Lake City, UT
KSL 5 News at Noon

+ Local Market Viewership: 13,451
Local Publicity Value:
\$1,113.56 per 30s

KSL 6/1/2017 12:04:49 PM: ...heads up if your headed to salt Lake City international airport...a big change today for folks who wait for arrivals...quite the milestone as construction continues on the new airport--expected to be complete in 2020... let's show you a birds eye view of where this is located in relation to the other location... it's moved south and west of the current lot. and it's bigger - with 120 parking spots instead of 86... airport officials advice for drivers is to stay to the left--instead of the right--when they exit the freeway. the lot had to be moved to make way for an elevated roadway for the new airport. while that won't be complete for quite some time--come fall, the lot will also have a convenience store, burger king, costa vida, beans & brew, restrooms, and a gas station--perfect for filling up rental cars. 11:45:29 "11:45:29 we also like to

Paused

6/1/2017 12:04:41 PM

[Clip Editor](#)

make sure we're offering services so that people will stay in the park and wait lot because there's really a lot of congestion curbside so we always encourage the drivers to wait in the lot until their passengers have their bags and are ready to be picked up at the curb." again, make sure to stay to the left while waiting for arrivals... if you miss it loop back around. turning to politics... president trump is expected to announce today whether he will pull the u.s. out of the paris climate accord. and quickly - u.s. allies around the world have sounded alarms about the likely consequences of an american withdrawal. in the short term it looks like nothing will happen - for at least three to four years. that's because this 200-nation accord legally enjoins the u.s. to certain emissions commitments since the obama administration signed it last november. but in the medium term - a withdrawal means the u.s. no longer has to reduce its emissions levels by 17 percent by 2020. and it also releases the u.s. from having to reduce its emissions by a further 26 to 28 percent by 2025. still ahead - a massive explosion - leveling a corn plant. the search efforts still underway - with workers still missing. plus - a risky climb ends with a daring rescue. we'll show you how these teens managed to get themselves into so much trouble. ...

Records reflect UTA-Salt Lake City stalemate over \$68.5M airport TRAX extension funding

By Matthew Piper The Salt Lake Tribune

Published: June 5, 2017 06:00AM

Updated: June 5, 2017 06:00AM

Transit • Preferred \$68.5M plan calls for pricey elevated track and station that wouldn't leave passengers with 1,200-foot trek.

The debt-mired Utah Transit Authority says it has dug through its seat cushions and come up \$58 million short of the \$68.5 million cost of relocating the Salt Lake City International Airport TRAX station.

Without some blend of financial assistance from Salt Lake City, Salt Lake County or the state, UTA says it will have to build a lesser extension of its light-rail line or make drastic cuts to other transit services, like bus routes.

UTA earlier this year sketched out a half-dozen outside funding solutions — including increases to hotel, rental car or gas taxes; the implementation of a parking sales tax; or an influx of onetime state funds — that would allow it to build the preferred TRAX extension without compromising other services.

But its internal emails indicate that Salt Lake City Mayor Jackie Biskupski has stood firm in talks with the agency: UTA committed to pay for the relocation, and the city, at least at one point, was not going to be a source of funds.

In a March email obtained by The Salt Lake Tribune through a request for records related to the project, UTA President and CEO Jerry Benson recounted a "tense" meeting with Biskupski, in which the mayor "said the city will not contribute to the cost of the airport [TRAX] station."

The Salt Lake Tribune asked UTA and Salt Lake City to provide all written correspondence within the past year that relates to the airport TRAX expansion. UTA says 92 documents are protected by attorney-client privilege or because they were confidential drafts. The remaining documents provide no indication that the mayor has budged since the March meeting — even as the City Council has expressed concern about the project's status.

Biskupski declined an interview for this story, saying through a spokesperson: "UTA has to decide what level of services they want to provide at the airport. The city's providing a world-class airport that serves the entire state."

—
'A serious choice' • Things were different when UTA signed an interlocal agreement with Salt Lake City to pay "all reasonable and necessary costs" to move the station.

It was June 2008, amid recession, and UTA was committing to a far-off airport expansion that had been on hold for years.

More importantly, agency leaders have since said, UTA didn't anticipate the pricey elevated track called for by the airport's eventual design. Benson and former UTA board Chairman H. David Burton have quoted the expected cost at \$5 million, and a slideshow prepared by UTA in March says the agency originally contemplated \$5 million for a new station and \$10 million for a quarter-mile of new track.

The \$68.5 million project now planned requires twice as much track, most of it elevated, and an elevated station that would drop off and pick up travelers across a skybridge from a gleaming new terminal.

The alternative is that a ground-level station would need to be located 1,200 feet away from the terminal, leaving travelers to lug their bags the length of four football fields.

Benson said that when the elevated track and station became the preferred option — which it remains for all involved — Biskupski's predecessor, Ralph Becker, indicated informally that Salt Lake City would chip in.

Becker wasn't specific when asked by The Tribune about those discussions, saying "There is just about always a way to finance improvements if you've got smart, creative people handling financing and people who want to work together to get a project done."

Biskupski wrote to Benson that the partners were "off to a good start" in June 2016, after she addressed UTA's board and urged trustees to support paying \$4.3 million to design the elevated track.

"We have a serious choice to make," Biskupski told the board. "This station and the rail component of our new world-class airport can either be a bright spot in the state-of-the-art facility ... or it can be the missing piece of an airport designed with traveler comfort and convenience in mind."



Courtesy | Salt Lake City International Airport An artist's rendering shows proposed elevated TRAX rail extension to new terminal at the airport.

But while Biskupski told the board then that she didn't want the full cost "just to fall in your lap" and that the city would help seek federal and state funding, discussions between UTA and the mayor's office evidently became marred by Biskupski's irritation at a perceived lack of initiative from UTA.

When Benson proposed a sitdown with the mayor, a Biskupski staffer wrote back that the mayor wanted to meet only if Benson had "a plan to move forward." Benson withdrew his request.

February internal emails from UTA indicate that the city had asked the agency to come up with \$2 million per year for bond payments and that UTA hoped to impress upon the city the devastating impact those payments would have on its other services.

The agency rendered a map of Salt Lake City's bus routes, with the downtown awash in red, representing needed cuts: Third Avenue, 900 South, 11th Avenue, 1700 South, State Capitol, Industrial Park and International Center.

UTA officials chose those routes to give city leaders a sense of magnitude, Benson said, not as a serious contemplation of likely cuts.

"You could imagine a scenario where you take the [2008] interlocal agreement and you say, 'UTA will pay the cost of the relocation,'" he said. "And you say, 'All right, the cost is \$68 million. UTA, you're legally obligated to do that, and you're not going to get a dime from anybody.' Well, where would [we] get that money?"

In April, Salt Lake City UTA board representative Keith Bartholomew resigned from the board at Biskupski's request after suggesting that the city's airport designs had led to unforeseen cost increases.

Biskupski's pick to take Bartholomew's place, state Sen. Jim Dabakis, D-Salt Lake City, said this week that he hasn't yet developed a stand on the issue. His appointment is pending approval from the City Council.

Lane Beattie, president and CEO of the Salt Lake Chamber, has attended meetings with Biskupski and Benson and accompanied them to Washington, D.C., to lobby for a federal loan that would defer payments on up to 48 percent of the cost for five years.

Beattie said he's confident that the airport extension will be "an economic boon for all" and that the debate over funding is "one of those silly fights."

Work needs to begin by spring 2018 if the proposed extension is to be completed by the new terminal's August 2020 opening — another condition agreed to by UTA in the interlocal agreement. Were UTA and the city to agree to a lower-cost extension, Benson said, they would have little time for the additional design and engineering work.

"We can see a goal and we're committed to working with each other to get to that goal, but it's not clear how we're going to get there," he said.

—

'Skin in the game' • Before an early February meeting with the city, UTA Chief Planning Officer Matthew Sibul wrote that UTA could contribute about \$10.3 million toward construction — \$4 million in federal grant funds, a \$1.3 million fare surcharge at the airport and \$5 million in other local sources.

That level of funding "meets the 'reasonable' test from 2008," Sibul wrote, though it was "a little bit scary" for an agency that spends a third of its operating budget on debt payments — as much as it spends on bus service.

"We need to have some skin in the game that others consider reasonable," he said.

To imagine how it might scrounge up the remaining \$58.2 million, UTA asked Zions Public Finance to detail a half-dozen other possible sources of available funds.

The full list includes county and city hotel taxes, city parking fees, county rental-car taxes, a parking sales tax (parking is now exempt from sales tax), state gas taxes and one-time state funds.

Most of those sources would require legislative approval — either at the state, county or city level or some combination — and are characterized by Zions as "difficult," "doubtful" or "not likely."

"The two most likely revenue sources appear to be [hotel] taxes and an increase in parking fees in Salt Lake City," according to the Zions report.

Salt Lake County spokeswoman Michelle Schmitt said in response to a request for comment on the analysis: "UTA and the city made a commitment, so we need to see what they can come up with."

County residents paid through vehicle registration fees in 2008, when Salt Lake City was short \$35 million to complete the \$350 million extension.

The city had planned to use available airport funds but was disallowed by legislation — still in effect — sponsored by Sen. Curtis Bramble, R-Provo, under pressure from Delta Air Lines.

Zions wrote that if Bramble's language was removed from state law, the airport could fully fund the TRAX extension with a 10 percent increase in parking fees.

Bramble said he would be amenable to that if "the facts warranted it" but that he would want to review ridership numbers.

UTA did not have readily available numbers for the airport portion of the Green Line, which runs east from West Valley into downtown Salt Lake, then west to its last stop at the airport. Through the end of April, rides along the entire line were on pace for about 4.5 million in 2017, slightly down from 4.7 million in 2016, which had dipped from 4.9 million in 2015 and nearly 5 million in 2014.

Salt Lake City Council members, for their part, have made few public comments but have privately expressed a willingness to support some level of city funding while feeling uneasy that the state — angling for a slice of airport revenues — might step in to fill the gap instead.

A December email that Salt Lake City legislative adviser Lynn Pace wrote to lobbyists said he'd met with the council and that "they made it very clear" that they didn't want Pace or city lobbyists to bring up the TRAX relocation to legislators.

Said City Councilman Derek Kitchen: "Maybe at the intellectual level, it might make sense to think of the state as a partner here, but in practicality, if we pull the state in, we risk losing our asset. If we really want this, the city needs to explore all the options that are within our control."

Kitchen added that he's "begging" to be included in the conversation.

"I think this has become a political issue, which is unfortunate, because I don't know that there's a single person out there who doesn't think that TRAX should be extended all the way through the airport."

mpiper@sltrib.com

Twitter: @matthew_piper

Tribune Editorial: Don't stop SLC airport TRAX short of airport

Published: June 6, 2017 05:57PM
Updated: June 7, 2017 09:11AM

Let's start by stating the obvious. We're not going to build a \$2 billion airport and make people walk a quarter mile to get to it.

There is a standoff over who will pay \$68 million to extend Utah Transit Authority's TRAX line into Salt Lake City International Airport's new terminal. UTA says it has only committed to cover about \$15 million, and that was based on a long-ago assumption that it would merely be extending the track and building a new station similar to the current one. Airport design since then includes elevating the track and building a skybridge to the new terminal.

UTA CEO Jerry Benson says former Mayor Ralph Becker informally committed the city to help with the more expensive plan, but current Mayor Jackie Biskupski is pushing back, saying UTA has to find the money.

In an email obtained by The Tribune, Benson told a colleague after a "tense" meeting with Biskupski in March that "the city will not contribute to the cost of the airport (TRAX) station."

When a Tribune reporter asked for an interview with Biskupski on this last week, her office declined, saying, "UTA has to decide what level of services they want at the airport. The city's providing a world-class airport that serves the entire state."

That is a bluff, which is probably why the mayor doesn't want to talk about it. Ultimately, her city needs a fully integrated light rail station at the airport. The alternative — a ground-level station 1,200 feet away from the terminal — is not an actual alternative.

UTA also is posturing, offering a list of possible funding alternatives that included the option of hefty cuts to bus service in the city. Even Benson knows that's a non-starter.

Both Benson and Biskupski face unbending realities. For Benson, it's that UTA is financially maxed. It can't raise taxes, and it can't add to its \$2 billion debt, until public trust has improved.

For Biskupski, it's an airport that is already \$350 million over budget. Those costs are covered by the fees charged to airlines, but the biggest airline has had enough. Delta Airlines got Utah legislators to pass a law that prohibits those airport fees from covering the transit system. (The city and UTA may have been slow to solve this, but Delta saw it coming a while ago.)

What's more, if the city cries poverty and goes to the Legislature for more airport money, it risks the state wanting more control over Salt Lake City International in exchange.

Ultimately, neither Benson nor Biskupski has a great hand, which is why they need to stop playing poker and find a way to work together.



(Rick Egan | The Salt Lake Tribune) Excavators demolish the exit ramp to what was previously the drive-through lane of the Salt Lake International Airport's short-term parking garage. The exit ramp area, as well as what formerly housed car rental canopies will become a new roadway exiting the airport the summer of 2016 to prepare for future construction projects at the airport, Monday, February 22, 2016.

FLOOD WATCH: Weber River



(/news/local/flood-watch-along-the-weber-river-until-friday)

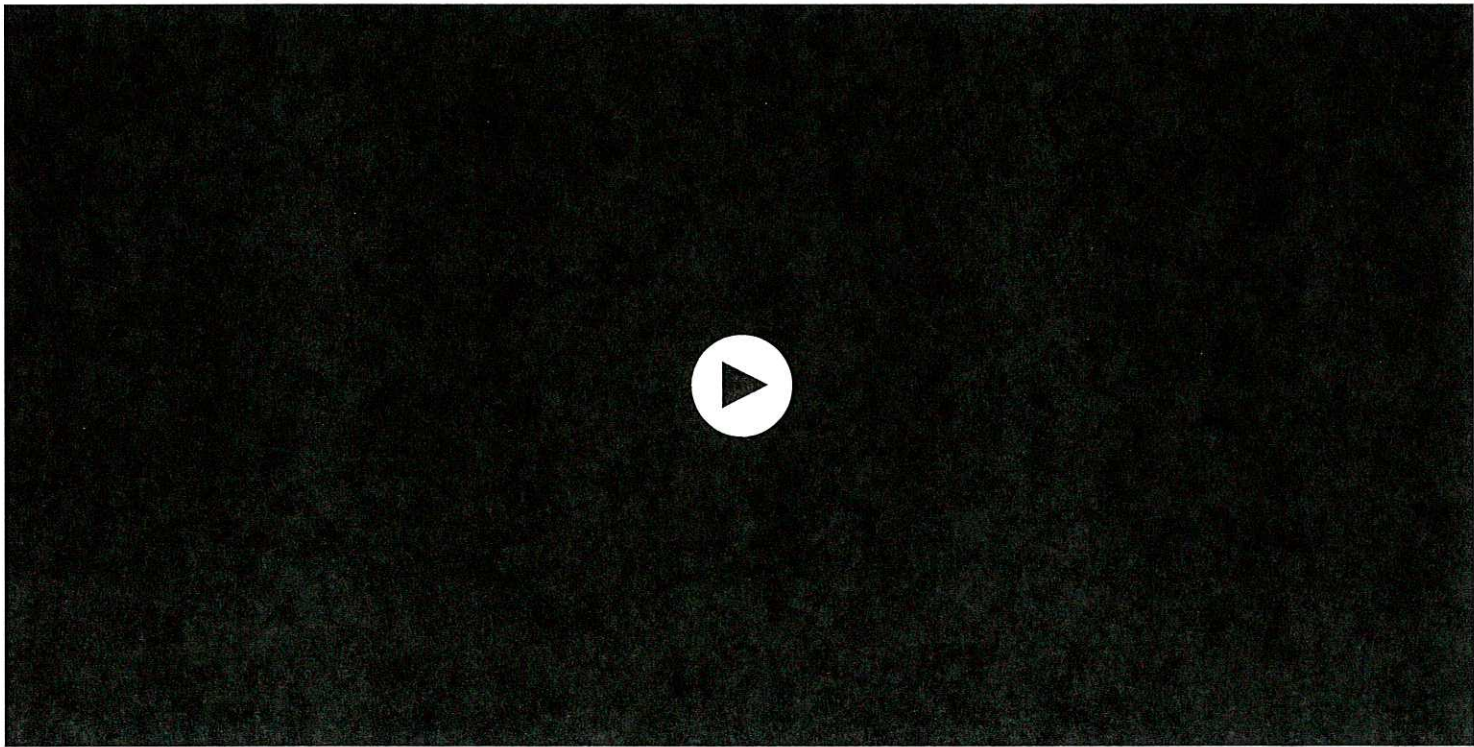


Flood Watch

ADVERTISEMENT

UTA money shortage may mean a long walk for TRAX riders at the airport

by KUTV
Monday, June 5th 2017



UTA money shortage may mean a long walk for TRAX riders at the airport (Photo: UTA)

(mailto:?subject=A%20link%20for%20you&



☀ 70°

WEATHER (/WEATHER)

SPORTS (/SPORTS)

FEATURES (/FEATURES)

FOOD (/FEATURES/FOOD)

HEALTH (/FEATURES/HEALTH)

CONTACT (/CONTACT)

FACEBOOK

TWITTER

MAIL

TRENDING

(KUTV) UTA is about \$58 million short in its plan to rebuild a new airport TRAX station.

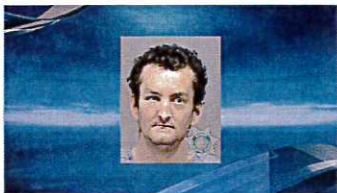
The project, with a \$68.5 million price tag would elevate the TRAX train inside the airport to the second level of the terminal. If UTA can't foot the cost, the next option is to move TRAX beyond the reconstruction, forcing travelers to walk about 1,200 feet to the terminal, often with luggage.

Because of reconstruction, the current placement of the TRAX station doesn't work.

The expansion cost is estimated at \$3.1 billion.

UTA issued a statement that said it would continue to work with Salt Lake City to find a solution to fully fund the project. 2News reporter Rod Decker said beyond the statement, UTA will not talk and Salt Lake City will not talk. Construction is moving forward but there are no plans to fund the new station.

MORE TO EXPLORE



Deputies: Man killed mother, walked into...

(<http://kutv.com/police-man-who-walked-into-store-holding-human-head-stabbed-employee-due-in-court>)



Plea deal in works for 16-year-old Utah...

(<http://kutv.com/news/local/plea-deal-in-works-for-16-year-old-girl-charged-in-alleged-suicide-pact-crash>)



Chiefs sign 6 free agents, including Utah...

(<http://kutv.com/sports/outdoors/chiefs-sign-6-free-agents-including-utah-lineman-waive-7-others-in-roster-reshape>)



Getting zipped into an oxygen chamber may...

([http://circa.com/scitech/this-woman-used-oxygen-therapy-to-get-rid-of-stage-4-cancer?](http://circa.com/scitech/this-woman-used-oxygen-therapy-to-get-rid-of-stage-4-cancer?utm_medium=Discovery&utm_source=Outl)
utm_medium=Discovery&utm_source=Outl

SPONSORED CONTENT



☀️ 70°

WEATHER (/WEATHER)

FACEBOOK

SPORTS (/SPORTS)

FEATURES

TWITTER

FOOD (/FEATURES/FOOD)

HEALTH (/FEATURES/HEALTH)

MAIL

CONTENT (/CONTENT/CONTENT)

TRENDING

Transcript

[More Text](#) | [Add to My Clips](#) | [Email Video/Transcript](#)[Zoom](#)☐ **Include In Report**

KSL-SLC (NBC) - Salt Lake City, UT
KSL 5 News at 10

+ Local Market Viewership: 72,878
Local Publicity Value:
\$8,927.26 per 30s

KSL 6/8/2017 10:04:32 PM: ...several small grass fires today.the first was in north salt lake that south davis metro put out before any major trouble.then unified and west valley fire responded to one near bacchus highway in magna and at salt lake international airport near the exit pay booths.there were no damages.. just a lot of backup at the airport. adlib toss heber city police have arrested a man they say sexually abused at least three children while operating his bounce house and water slide business.they worry there may be more victims. police say 33-year-old bryce johnson is the owner and operator of fun stuff l-l-c. they're worried that with him working close to so many children, there could be more victims who haven't reported anything.johnson is already being charged with three counts of aggravated sexual abuse of a child. tonight.. the humane society of utah is calling the man killed.. from an intentional hit-and-run crash.. a hero. saying he was killed.. while defending a dog. police say 47-year-old jeremy hardman and his friend.. saw a man beating a small dog. the two men reportedly pulled over.. and confronted the man. when they went back to their truck.. police say the suspect got into his car.. ran hardman over.. and drove off. martinez, victim's friend "seems so senseless, seems so pointless and he was just trying to help the animal it seems like a senseless way to lose your life trying to do something good, trying to help."police are searching for the driver.. of this black lexus. they say the car has a loud exhaust system.. a temporary license plate.. and a smashed windshield.if you have any information.. call west valley police. ...

Transcript

[More Text](#) | [Add to My Clips](#) | [Email Video/Transcript](#)[Zoom](#)☐ **Include In Report****KSTU-SLC (FOX) - Salt Lake City, UT**
FOX 13 News at Four

+ Local Market Viewership: 22,262
Local Publicity Value:
\$1,680.90 per 30s

KSTU 6/8/2017 4:02:47 PM: ...it happened at 756 north taylor way. they were able to get the fire under control pretty quickly there.... no injuries and no damages just burned brush.. fire crews say the flames at the salt lake

international airport are now under control. that small fire was causing major traffic delays at the parking exit there... we're told everything is moving now. no word yet on what ignited those flames. be sure to stick with fox 13 news as we continue to cover the fire danger across the state... updates right here on fox 13's live at four... as well as our website fox 13 now dot com. . salt lake city: sunny & hot! south winds 15-25 mph. highs: upper 90s. st. george: sunny & hot! south winds 15-25 mph. highs: near 100. it will be hot, dry, and breezy again today...leading to high fire danger! temperatures will be 10-

Paused

6/8/2017 4:02:35 PM

[Clip Editor](#)

20 degrees above average with records possible. it will be several degrees cooler tomorrow, with temperatures continuing to drop through early next week. south winds 15-25 mph. highs: upper 90s. st. george: sunny & hot! south winds 15-25 mph. highs: near 100. it will be hot, dry, and breezy again today...leading to high fire danger! temperatures will be 10-20 degrees above average with records possible. it will be several degrees cooler tomorrow, with temperatures continuing to drop through early next week. . a huge announcement from onlinretail giant amazon. theyre moving into utah. the company is planning to build a massive facility in salt lake city. fox 13s ben winslow broke the story this morning. hes live on utahs capitol hill. this is a big economic announcement. amazon plans to spend 200 million to build a regional center to fulfill online orders. its expected to employ hundreds as its built, then another 130 when its up and running, generating 85 million in wages and another 28 million in tax ...

Business Traveller – The leading magazine for frequent flyers

BT www.businesstraveller.com/airports/2017/05/31/new-york-airports-among-worst-time-arrivals/



A report from milecards.com has found that Newark International Airport has the worst on-time performance of any airline during the busy summer travel months, with an average of just 66.5 per cent of Newark flights operating on schedule. New York's LaGuardia International Airport had the second-worst on-time performance, while nearby Kennedy International Airport was fourth on the list. San Francisco International Airport has the third-fewest on-time arrivals among U.S. airports.

The report was drawn from U.S. Department of Transportation data on summer travel for the period 2007-2016.

Interestingly, the study shows that most U.S. airports have worse delays in the summer than the winter, even in areas subject to severe winter weather, like Boston and New York. June is the worst month for summer air-travel delays (Boston finished fifth on the list of oft-delayed airports).

Kahului International Airport and Honolulu International Airport, on the Hawaiian islands of Maui and Oahu, respectively, had the best on-time performance for summer travel, with 88 per cent and 86.5 per cent of flights arriving on time, respectively. Summer is considered low season for Hawaii travel.

Other airports with good on-time performance for summer travel include Salt Lake City International Airport, Orange County International Airport, and Phoenix/Sky Harbor International Airport.

milecards.com

Revealed: America's top ten worst airports for summer flight delays

[Site](#) [Web](#)

- A study by Miles Card found that the Newark Liberty International Airport only had 66.5 per cent of flights landing on time in the summer
- La Guardia Airport, San Francisco International Airport, John F. Kennedy International Airport and six others were also listed as being the worst
- The study analyzed measuring data from the Department of Transportation from 2007 to 2016
- Kahului Airport and Daniel K. Inouye International Airport in Honolulu were ranked among the best with a 88 per cent rate and an 86.5 per cent rate

By [MATTHEW WRIGHT FOR DAILYMAL.COM](#)

PUBLISHED: 22:50 EDT, 3 June 2017 | **UPDATED:** 01:06 EDT, 4 June 2017

63

shares

26

[View comments](#)

People may want to take some extra precautions when deciding where to fly out for their summer vacations this year.

A study by Miles Card recently found out the 10 worst airports to experience flight delays and the Newark Liberty International Airport came in last place, with only 66.5 per cent of flights landing on time in the summer.

Others included: La Guardia Airport (NYC), San Francisco International Airport (San Francisco), John F. Kennedy International Airport (NYC), Logan International Airport (Boston), O'Hare International Airport (Chicago), Philadelphia International Airport (Philadelphia), Miami International Airport (Miami), Ronald Reagan Washington

National Airport (Washington DC) a (Columbus).



A study by Miles Card recently found out the 10 worst airports to experience flight delays. JFK airport came in fourth with a rate of 69 per cent



FEMAIL T

► PICTURE E)
Bradley Coop
cradling his n
daughter Lea
during stroll v
Shayk in LA
Young family

► Nothing to h
Baldwin pose
topless Instag
days after fir
online haters
She is a beac
positivity

► Bella Hadid
impressively
into racy cut-
swims
smold
high p
campe

► Kesh
walks
court c
sexual
actress who
Rudy Huxtabl
support for he

► 'I'll always lo
Caitlyn Jenne
eternal feelin
wife Kris as s
discusses he
on KUWTK
Books has cal

► 'She wanted
her following'
Kardashian's
girlfriend' Mel
James 'plante
entire story' f
media fame

► Kimora Lee
will become n
with Eddie Mu
'splurging on
Beverly Park
with movie th
cellar and hug



The study named the 10 worst and 10 best airports to travel to. Newark was the worst with a rate of 66.5 per cent while Kahului Airport in Hawaii had 88 per cent

According to the survey, roughly 234 million people will travel this summer and after measuring data from the Department of Transportation from 2007 to 2016 they were able to identify the airports with the most problems.

The study found 40 per cent of the top 50 airports have more summer delays than winter and that the month of June tends to be the month when airports experience the most delays.

Two of Hawaii's airports - Kahului Airport and Daniel K. Inouye International Airport (Honolulu) - were ranked among the best with the former having a 88 per cent on time rate and the latter had an 86.5 per cent rate. Salt Lake City International Airport

raises almost

► Dressed to kill
The First couple
and Jared and
and Melania t
in their black-
as they head
Ford's Theatr

► Curves ahead
Courtney St
reveals her b
bosom as she
in LBD during
She's an expe
sensual selfie:

► Pippa Middle
shirt dress ar
favorite espa
revealing she
husba
having
time' c

Small aircraft crashes at Tooele airport

By Tiffany Frandsen The Salt Lake Tribune

Published: June 6, 2017 04:57PM

Updated: June 6, 2017 04:57PM

A small aircraft crashed at the Tooele airport Tuesday afternoon.

The pilot wasn't injured in the crash, which happened at 4:30 p.m. on Erda Way, confirmed Tooele County Sheriff's Lt. Ron Johnson.

Police are investigating the cause of the crash.

The Salt Lake Tribune will update this story as more information becomes available.

Plane crashes at Tooele Airport; no injuries

POSTED 6:38 PM, JUNE 6, 2017, BY DAVID WELLS, UPDATED AT 08:28AM, JUNE 7, 2017



ERDA, Utah — A Cessna plane was totaled and no one was injured in a crash at Tooele Airport Tuesday afternoon.

According to the Tooele County Sheriff's Office, the incident happened around 4:27 p.m. at Tooele Airport, 4663 N Airport Rd. in Erda.

A representative for the sheriff's office said the plane was being flown by a 41-year-old man who is a student pilot.

The crash is under investigation.



FLOOD WATCH: Weber River



(/news/local/flood-watch-along-the-weber-river-until-friday)

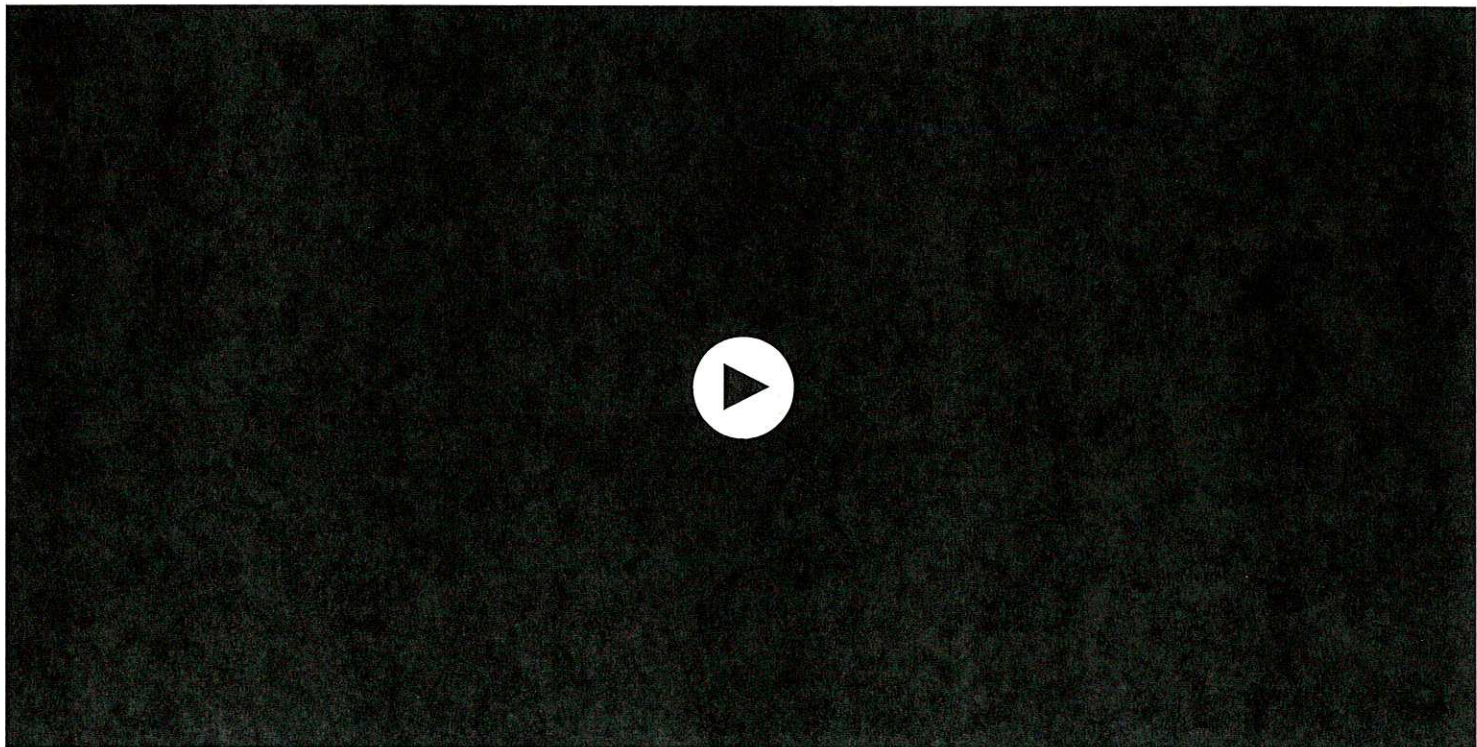


Flood Watch

ADVERTISEMENT

Pilot crashes airplane in Tooele County, manages to walk away without serious injuries

by Cimaron Neugebauer and Mehul Asher
Tuesday, June 6th 2017



Pilot crashes airplane in Tooele, manages to walk away without serious injuries. (Photo: Tooele County Sheriff's Office)

(mailto:?subject=A%20link%20for%20you&

(KUTV) A 41-year-old man crashed his plane at the Tooele airport on Tuesday afternoon, but was able to walk away from the crash without any serious injuries.

The student pilot, who was the only person on board, was trying to land his four-seater Cessna single-engine airplane at the Tooele Valley Airport in Erda around 4 p.m. when the crash happened, according to Tooele County Sheriff's Office.

He was heading north on the runway and the airplane's engine stalled and veered off the the runway path to the west. The wing of the airplane clipped the ground and caused the plane's nose to crash into the ground, a spokesman for the sheriff's office said.

The National Transportation Safety Board is on the scene investigating if the crash was due to pilot error or if it was caused by a mechanical problem.

[CLICK HERE to print this page](#)



Student pilot crashes while attempting to land at Tooele County airport

June 7, 2017



ERDA, Tooele County — A 41-year-old student pilot is recovering after crashing his plane while trying to land at a Tooele County airport.

Reports say the man was alone in the four-seater plane and did not suffer any serious injuries during the Tuesday incident.

A Tooele County Sheriff's Office spokesman says the pilot was heading north on the runway when the airplane's engine stalled, causing it to veer off the runway path to the west.

The airplane's nose crashed into the ground after the wing clipped the ground, according to the spokesman.

The National Transportation Safety Board is investigating to determine whether the crash was caused by pilot error or a mechanical issue.

X

[//news/section/world/your-voice-your-future-roundtable-wild-wild-west-wing](#))



Watch Live May 24th >>>

ADVERTISEMENT

Airport police records reveal plethora of unique incidents at SLC Int'l

by Matt Gephardt and Cindy St. Clair
Tuesday, May 23rd 2017



03:02

Airport Police at Salt Lake International Airport

(KUTV) Among airport travelers there can be a lot of hurrying, frayed nerves, and drinking. Combined, it doesn't always add up to folks being on their best behavior.

Nationally, there have been some high-profile encounters between airport cops and travelers in recent weeks. We wanted to know, what is keeping police at Salt Lake International Airport busy.

Through a public records request, Get Gephardt received the call logs for the airport's police department and the numbers show it's a busy group.



In the past two years, cops have been dispatched to a potential crime 44,977 times; more than 60 times per day.

"Everybody works very hard every day to make sure that we have the safest transit you can have coming through your airport," said airport police chief Craig Vargo.

He said his force needs to always be on its toes because airports have become a high-profile place to target or threaten, and Salt Lake International is no exception.

There have been 14 bomb threats in two years at the airport, records show. When they are called in, Vargo said they jump into action to determine the threats validity.

"The airport has an emergency action plan for just about everything," Vargo said.

According to the logs, most of what these cops deal with is the same types of crimes you might see in a neighborhood, like speeding, fighting or stealing, but they've seen some objectively unique things as well.

For example, people flashing lasers at cockpits has been reported 238 times. Last year, somebody flew a drone right next to a plane. Also, police were called eight times saying a plane was about to hijacked.

Vargo said he can only recall one hijacking threat that turned out to be legitimate.

"We did have somebody that we had arrested that had carjacked a car, said his intent was to hijack a plane, we actually caught him right at the terminal front," Vargo said.

Honeymooners should also beware: they aren't allowed to start 'celebrating' early, say in an airport bathroom. There were 19 calls to airport police accusing people of violating "public morals."

"It's usually two consenting adults doing things they probably shouldn't have that got viewed."

Many calls are referred to either the the FAA or the TSA. Crimes that do fall into the Airport PD's jurisdiction are screened by Salt Lake City prosecutors.

Vargo says one of the most unique things about their beat doesn't show up in the call logs. He says it's the way the entire community is

FAA to shell out \$527.8m in grants to airports

By Justin Burns - Jun 5, 2017



A Delta Air Lines Airbus 330-300.)Picture courtesy of Delta Air Lines)

The US Department of Transportation has announced the Federal Aviation Administration (FAA) will award \$527.8 million in airport infrastructure grants to 584 gateways across the US as part of the FAA's Airport Improvement Program (AIP).

Among them are \$60 million to Chicago O'Hare International Airport. The first grant will allow construction phase of Runway 9C/27C to begin. The runway is expected to be commissioned in 2020.

Huntsville International-Carl T. Jones Field Airport will get \$5.5 million – which will fund the construction of a new parallel Taxiway C to enhance safety by reducing mid-field runway crossings by cargo aircraft.

Salt Lake City International Airport will receive \$7.3 million – allowing the airport to renovate Runway 14/32 and the runway lighting associated with that runway.



Sharelines

f t in FAA's Airport Improvement Program funds infrastructure projects.

f t in The Airport Improvement Program supports safety, capacity, security and environmental improvements.

f t in FAA can supplement airport entitlements with discretionary funding.

[US Department of Transportation Secretary Elaine Chao](#) announced yesterday the Federal Aviation Administration will award \$527.8 million in airport infrastructure grants to 584 airports across the United States as part of the FAA's [Airport Improvement Program \(AIP\)](#).

The airport grant program funds various types of airport infrastructure projects, including runways, taxiways, and airport signage, lighting, and marking.

"The Airport Improvement Program helps to maintain our aviation infrastructure and supports safety, capacity, security and environmental improvements," said Secretary Chao.

Related Content:



[WATCH: Port of Tacoma's Pier 4 Realignment is Coming Together](#)

"Investing in our airport infrastructure ensures the safe and efficient operation of our air transportation system," said [FAA Administrator Michael Huerta](#). "This funding program helps us maintain, renovate, and build airport infrastructure at airports."

Airports are entitled to a certain amount of AIP funding each year, based on passenger volume. If their capital project needs exceed their available entitlement funds, then the FAA can supplement their entitlements with discretionary funding. At this time, FAA is providing discretionary funding to 38 airports based on their high-priority project needs.

Among the airports receiving discretionary grants, Ainsworth Regional Airport in Ainsworth, Nebraska, will \$683,000 to fund two runway projects.

Asheville Regional Airport in Asheville, North Carolina will receive \$18.2 million for the seventh phase of a nine-phase project at this small hub airport. A temporary runway will be built while Runway 17/35 is rebuilt and relocated.

A \$60 million grant to Chicago O'Hare International Airport will allow the beginning of the construction phase of a new runway and will reimburse the airport for the construction of another runway

commissioned in 2013.

Denver International Airport is receiving \$12.4 million to renovate several airfield projects and a vehicle service road on the airport.

Gulfport-Biloxi International Airport in Gulfport, Mississippi, will receive \$3.4 million for noise mitigation measures for 347 residences near the airport. The soundproofing projects include residential sound insulation and easement acquisition to comply with the airport's approved noise compatibility program.

Huntsville International-Carl T. Jones Field in Huntsville, Alabama will receive \$5.5 million to fund the construction of a new parallel Taxiway C to enhance safety by reducing mid-field runway crossings by cargo aircraft.

Salt Lake City International Airport is receiving \$7.3 million to renovate Runway 14/32 and its lighting.

Need a Logistics Provider?

COMPARE OVER 100 INSTANTLY

SEARCH

FLOOD WATCH: Weber River



(/news/local/flood-watch-along-the-weber-river-until-friday)



Flood Watch

ADVERTISEMENT



Start your career with our Associate Degree in Nursing program at a campus near you.



Students from Canyons School District win Regional President's Environmental Youth Award

by KUTV
Monday, June 5th 2017



Students from Canyons School District win Regional President's Environmental Youth Award (KUTV)

AA



(mailto:?subject=A%20link%20for%20you&



☀ 76°

WEATHER (/WEATHER)

FACEBOOK

SPORTS (/SPORTS)

FEATURES

TWITTER

FOOD (/FEATURES/FOOD)

HEALTH (/FEATURES/HEALTH)

MAIL

CONTENT (/CONTENT)

TRENDING

SALT LAKE CITY, Utah — (KUTV (<http://kutv.com/>)) Four Utah students have won a prestigious award for their work with environmental science.

Abigail Slama-Catron and and Eric Snauffer, who attend Midvale Middle and Timothy Holt and Allison Drennan, who attend Beehive Science and Technology Academy, all won the Environmental Protection Agency's Regional President's Environmental Youth Award for their "Bionic Scarecrow."

The scarecrow was invented to help keep birds away from the wetlands around the Salt Lake International Airport.

ADVERTISING

inRead invented by Teads

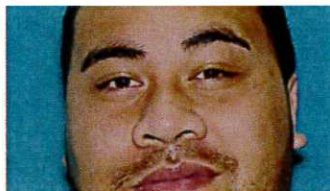
MORE TO EXPLORE



White House says Trump won't block...
(<http://kutv.com/news/nation-world/white-house-says-trump-wont-block-comey-testimony>)



Update: Victim of reported kidnapping...
(<http://kutv.com/news/local/gallery/salt-lake-city-police-searching-for-armed-man-accused-of-kidnapping-woman>)



Sandy man accused of injuring 2 in...
(<http://kutv.com/news/local/sandy-man-accused-of-injuring-2-in-machete-attack>)



Sheriff: Fired worker had plan to kill...
(<http://kutv.com/news/nation-world/sheriff-fired-worker-had-plan-to-kill-former-co-workers>)

SPONSORED CONTENT



Pippa Middleton's Deco-Inspired...
BRILLIANT EARTH
(<http://www.brilliantearth.com/news/pippa-middletons-deco-inspired-engagement-ring/>)
utm_source=outbrain&utm_medium=LPI&utm_campaign=us_desktoptablet&utm_term=006df336545fca7baf9aaf1aa373328732&utm_content=0040f99c55adb85d002b



The Simple Secret To Always Catch...
TRUTHFINDER
(http://truthrevealed.us/cheat.php?utm_medium=00531b79e298d2e32767c640335987e2006a7e28a1921b095f)



If You Own A Home You Must Claim Your...
THE BETTER FINANCE
(<http://track.catchmeintraffics.com/5e779cd91335987e2006a7e28a1921b095f>)
utm_medium=00531b79e298d2e32767c640335987e2006a7e28a1921b095f&utm_term=006df336545fca7baf9aaf1aa373328732&utm_content=0040f99c55adb85d002b



10 Mega Pastors Not Practicing...
TREND CHASER
(<https://www.trend-chaser.com/006df336545fca7baf9aaf1aa373328732>)
utm_medium=00531b79e298d2e32767c640335987e2006a7e28a1921b095f&utm_term=006df336545fca7baf9aaf1aa373328732&utm_content=0040f99c55adb85d002b



WEATHER (/WEATHER)

SPORTS (/SPORTS)

FEATURES

FOOD (/FEATURES/FOOD)

HEALTH (/FEATURES/HEALTH)

CONTENT (/CONTENT/CONT

FACEBOOK

TWITTER

MAIL

TRENDING

Recommended by

(<http://www.outbrain.com/what-is-outbrain>)

Local Kids Recieve The Regional President's Environmental Youth Award

By: Marquee Mclain ✉ (<mailto:mmclain@good4utah.com>)

Posted: Jun 05, 2017 07:13 AM MDT

Updated: Jun 05, 2017 07:13 AM MDT

21



00:25

03:48 HD CC

SALT LAKE CITY, Utah (ABC4 News) Four students here in Utah are receiving The Regional President's Environmental Youth Award from the U.S. environmental protection agency. To talk about the recognition, Abigail and Eric from Midvale Middle School and Timothy and Allison from Beehive Science and Technology Academy joined Good Morning Utah with Emily Clark.

Four Sandy sixth-grade students recently solved the "Miracle on the Hudson" airplane bird strike problem. For their ingenuity, they have been recognized with the prestigious President's Environmental Youth Award from the EPA. The award was given to the students on Thursday.

projects to the EPA for consideration. The region includes Utah, Colorado, North Dakota, South Dakota, Montana and Wyoming.

The students' science fair project, called "Bionic Scarecrow," was created with the aim of keeping birds away from nesting in the wetlands around the Salt Lake International Airport. The project features a small inflatable "air dancer" that is powered by a small battery. The flapping has proven to scare away birds.

Copyright 2017 Nexstar Broadcasting, Inc. All rights reserved. This material may not be published, broadcast, rewritten, or redistribu...

◀ 21

Salt Lake City Events

WED 7 **Cinders, REDLANDS, Valienta, 20 S...**
Kilby Court | Salt Lake City, UT

TUE 6 **McCune Mansion Tours**
Utah Heritage Foun... | Salt Lake City, UT

TUE 6 **Amazing Scavenger Hunt Adventure**
The Depot | Salt Lake City, UT

TUE 6 **Tyler Bloomquist: Confusion**
FICE Gallery | Salt Lake City, UT

TUE 6 **Mapping & Unpacking: Mixed Medi...**
Gallery at Library... | Salt Lake City, UT

	TUE	WED	THU	FRI	SAT	SUN
	6	7	8	9	10	11

 See all events  Add your event

Stay Connected

 [ABC4 Utah on Facebook](https://www.facebook.com/abc4utah)
(<https://www.facebook.com/abc4utah>)

 [ABC4 UTAH on Twitter](https://twitter.com/abc4utah)
(<https://twitter.com/abc4utah>)

 [Good Things Utah](https://www.facebook.com/goodthingsutah/)
(<https://www.facebook.com/goodthingsutah/>)

 [Good4Utah iPhone App](https://itunes.apple.com/us/app/ktvx-tv-abc4/id585373069?mt=8)
(<https://itunes.apple.com/us/app/ktvx-tv-abc4/id585373069?mt=8>)

Transcript

[More Text](#) | [Add to My Clips](#) | [Email Video/Transcript](#)[Zoom](#)☐ **Include In Report****KSTU-SLC (FOX) - Salt Lake City, UT**
FOX 13 News at Nine

+ Local Market Viewership: 47,685
Local Publicity Value:
\$5,751.95 per 30s

KSTU 6/1/2017 9:18:36 PM: ...bionic

scare crow and they're imitating what it does, right there, it's like a miniature version of an air dancer one of those inflatable bean pole people you might see outside a mattress store or car lot. they went to the Salt lake international airport to see if their invention keeps birds away. >> scaring the bir so they don't crash into planes causing bird strikes. >> it's also really portable. we as a team have designed something that's going out into the world and doing good. that just means so much. >> like it's not every day you get a presidential award. >> and look at their shirts. they even have, they have their logo stitched into the shirt. you kids are cool. the team has applied for a patent and they're already working with hill air force base to bring them a bionic scare crow. >> okay, look at that. a rare sight over Salt lake city tonight. fox 13 photographer erin healy was recording that rainbow when lightning struck in the same area. and brek, i was actually lieding my bibbing. i went on a bike ride after the 5:00 o'clock show. >> did you get caught in the rain? >>. >> right over there, got caught in the rain, then there was lightning and i was spooked. >> i would be too. thank days rows. we're glad you're back, max. >> thank you very much. >> you didn't ask for a personal bike forecast before you went out. >> i should have. really i was riding back and thinking why didn't i talk to brek? brek? >> talk to me right now. >> hi man what's up? >> let's get you ready for the weekend. lots of plans. now today we've been seeing some scattered thunderstorms, rain showers impacting your plans here throughout the late afternoon into the early evening hours. another photo that came from a viewer connie potts looking at foot hills of Salt lake valley, double rainbow there, that's a sight. we've been seeing those lightning strikes as well, hearing that thunder, and some rain in some locations. as we look at our official high today we topped off at 85 degrees, above normal. not quite close to where the record was set back in 1910 at 93 degrees but this is where we're heading back to, as we look towards the weekend. current temperature though we're at 70 degrees mostly cloudy skies. we're beginning to see these thunderstorms dissipate just a bit. as we'll see some improvements we'll still hold on with a slight chance of some isolated showers there as well. make you aware, as we have been looking over the past couple of days, flood warning in place fill as to logan river. ...

6/1/2017 9:18:24 PM

[Clip Editor](#)

PLANNING COMMISSION

City Hall
8000 S. Redwood Rd.
6 p.m.

30 & July 1

WEST JORDAN THEATRE ARTS SUMMER MUSICAL "CURTAINS"

Midvale Performing Arts Center
695 W Center St • 7:30 p.m.

"CURTAINS" MATINEE

Midvale Performing
Arts Center
695 W Center St
2 p.m.

JUNE
28

CITY COUNCIL MEETING

City Hall
8000 S. Redwood Rd.
6 p.m.

Sugar Factory Playhouse and
West Jordan Theater Arts
present



JULY
1-4

WESTERN STAMPEDE PRCA RODEO

West Jordan Arena
8035 S 2200 West
Pre-rodeo 7:30 p.m. • 8 p.m.

JULY
1

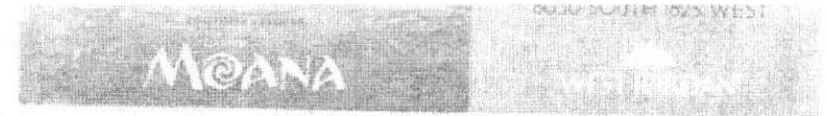
LINDA BUTTARS MEMORIAL FUN RUN

Veterans Memorial Park
8030 S 1825 West
8 a.m.

JULY
4

INDEPENDENCE DAY CITY OFFICES CLOSED

INDEPENDENCE DAY
PARADE - 10:30 A.M.



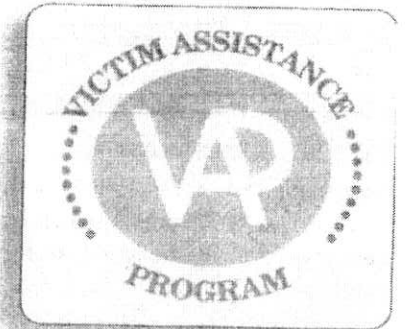
Victim Advocate Training

VOLUNTEERS NEEDED. Would you like to make a difference in the lives of violent crime and domestic abuse victims? If so, please consider volunteering as an on-call victim advocate. No experience is necessary, just a clean record, empathy and a willingness to learn and commit some time.

Volunteers are trained on how to offer support, guidance and available resources. Training can be completed in one 8 a.m. to 5 p.m. Saturday training session.

Available training session dates are June 10, 17 and 27.

For more information, contact the West Jordan Victim Assistance Program at 801-566-6511 or email ceciliab@wjordan.com.

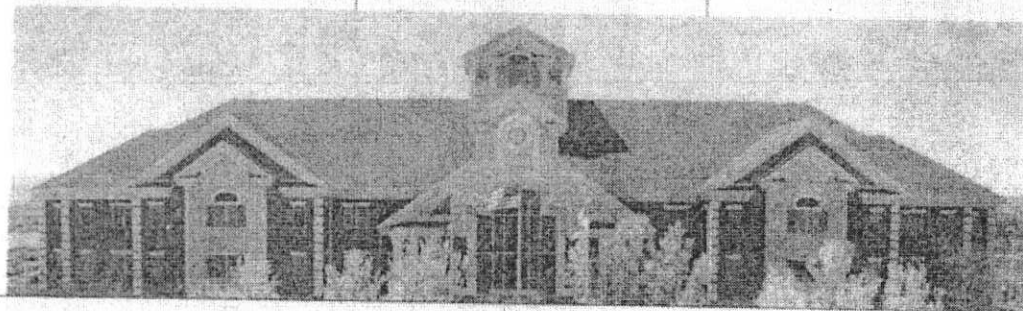


Volunteers Needed for Airport Advisory Board

The City Council is looking to appoint seven members to serve as an airport advisory board. Applicants should be knowledgeable in aviation (or the navigation of aircraft), and will provide information

and recommendations to the mayor that he can use in his role as a member of the Salt Lake City Airport Board. If you'd like to be considered for this position, please email a cover letter and resume to heathere@wjordan.com by June 16.

get
inVOLved
UNTEER



**WEST
JORDAN**

The City of West Jordan
8000 S. Redwood Rd.
West Jordan, UT 84088
(801) 569-5100
www.wjordan.com



facebook

Join the conversation! Follow
West Jordan - City Hall

West Jordan Police Dept
8040 S. Redwood Rd.
West Jordan, Utah 84088
801-256-2000
801-840-4000 Dispatch

*W. Jordan City Journal
June 2017*