

DEPARTMENT OF AIRPORTS
BOARD MEETING

18 October 2017

AGENDA



Salt Lake City
Department of Airports

**SALT LAKE CITY DEPARTMENT OF AIRPORTS
BOARD MEETING AGENDA**

18 October 2017
8:00 A.M.

CONSENT AGENDA

- A. Minutes of the 20 September 2017 Meeting

DISCUSSION ITEMS

- B. Director's Report – Russ Pack, Executive Director, SLCDCA
- C. Terminal Redevelopment Program (TRP) Update – Mike Williams, ARP Director, SLCDCA
- D. Air Service Overview and Industry Trends – David Dague, Executive Vice President, InterVistas

INFORMATION ITEMS

- A. Financial Report – August 2017
- B. Air Traffic Statistics – August 2017
- C. Comparison of On-Time Operations – July 2017
- D. Construction Report – October 2017
- E. Media Clippings – October 2017

The next meeting will be held on **Wednesday, December 13, 2017**, at 8:00 a.m. Meetings are held in the Board Room located on the third level of the short-term parking garage. People with disabilities may make requests for reasonable accommodations no later than 48 hours in advance in order to attend this Airport Board Meeting. Accommodations may include alternate formats, interpreters, and other auxiliary aids. This is an accessible facility. For questions or additional information, please contact LuJean Christensen at 801-575-2096.

DEPARTMENT OF AIRPORTS
BOARD MEETING

18 October 2017

MINUTES

SALT LAKE CITY DEPARTMENT OF AIRPORTS

MINUTES OF ADVISORY BOARD MEETING

20 September 2017

Members Present: J.T. Martin, Chair
Larry Pinnock, Vice-Chair
Igor Best-Devereux
Wade Bitner
Mickey Gallivan
Cyndy Miller

Excused: Natalie Gochnour
Sam Granato
Senator Karen Mayne
Steven Price
Kim Rolfe

Mayor's Office: Patrick Leary

City Council Office: James Rogers

Department of Airports: Russ Pack, Executive Director
Treber Andersen, Operations Superintendent
John Buckner, Director of Administration & Commercial Services
Ed Cherry, Chief Information Officer
LuJean Christensen, Management Support Coordinator
Eddie Clayson, Director of Maintenance
Marco Kunz, Attorney
Allen McCandless, Director of Planning
Kevin Robins, Director of Engineering
Craig Vargo, Police Chief
Nancy Volmer, Director of Public Relations & Marketing
Mike Williams, TRP Program Director

J.T. Martin called the meeting to order at 8:02 am. Martin acknowledged Council member Marcia White, Ogden City and Donnell Harvey, Delta Air Lines, who were in attendance.

AGENDA

A. Minutes

The motion was made by Mickey Gallivan and seconded by Wade Bitner to approve the minutes of August 2, 2017 as presented. All votes were affirmative; motion passed.

B. Director's Report

Russ Pack, Executive Director, updated the Airport Advisory Board regarding current events.

- Pack reported on Sam's health and that Sam sends his regards to the entire Board.
- Pack informed the Board that recently the Airport completed its FAR 139 Inspection. For the third year in a row there were zero discrepancies and no errors reported. The 139 Inspection includes a broad range of issues such as safety manuals, emergency plan, wildlife hazard management, runway lighting, security plan, snow and ice control, markings and signage. The inspection lasted several days. Pack recognized employees that were crucial during the inspection process. Treber Andersen, Operations Superintendent and Eddie Clayson, Maintenance Director introduced employees representing their divisions. Andersen acknowledged three Operations Managers, Darwin Peck, Candace Deavila and Bryce Royle who were instrumental in the FAR 139 Inspection. Clayson introduced Harvey Murphy and Ryan Richard, Airfield Equipment Operators, who were influential during the inspection process. Pack thanked the employees for making the FAR 139 inspection successful.

Pack requested that one of the Airfield Equipment Operators explain specifically what they do in the airfield to prepare for the inspection. Murphy answered that they are responsible for grading the runways, for repairing any discrepancies in pavement such as cracks or potholes, where the pavement comes off onto the shoulder ensure that there is no rutting or erosion problems, remove weeds that might obstruct signs or visual aids and rubber removal on the runways. Martin acknowledged the employees and wanted them to know how much the Board appreciates all they do.

C. Northwest Quadrant (NWQ) Master Plan

Tammy Hunsaker, Project Manager, SLC Redevelopment Agency and Danny Walz, Chief Operating Officer, SLC Redevelopment Agency, presented an update on the NWQ (presentation on file). Main points included were:

- Overview and Focus Area
- Two-phased Approach
- Phase I: Visioning Report
- Phase II: Strategic Implementation Plan
- Phase I Review: Stakeholder Outreach
- Phase I Review: Stakeholder Vision
- Phase I Review: Market Study
- Phase I Review: Development Scenario 1
- Phase I Review: Development Scenario 2
- Phase II: Process
- Phase II: Objectives

Martin inquired about the environmental and wildlife discussions.

- Hunsaker indicated discussions occurred during the Master Plan planning process.
- Conservation and buffer area were established.
- Environmental buffer area can have development but restrictions were put in place.
- Zoning for the area was determined to be M1 which is light manufacturing.

James Rogers, spoke on behalf of the City Council, stating that discussions regarding the landfill were ongoing.

- Windmills will not be considered due to the migratory bird path.
- Pack encouraged the Board to support the recommendation the area be rezoned to M1.

Igor Best-Devereux questioned the location for a potential third runway.

- Pack answered that the third runway would be approximately 20 years in the future and is currently being evaluated in the Airport Master Plan.
- Pack encouraged the Board to support the recommendation the area be rezoned to M1 and reminded the Board that current air space capacity is more than adequate.

Martin inquired as to the location of the rail entry into the NWQ and if a comprehensive discussion regarding rail service was underway.

- Hunsaker stated that the rail entry into the NWQ will be located on 5400 South.
- Hunsaker answered the discussions taking place were focused on the focus area and not the entire NWQ area.
- The focus area was done with the under developmental land north of I-80 and looking at that area specifically for tax increment funding.

Rogers asked what the timeline of getting the project area approved was.

- Hunsaker replied the City is ready to go forward with Phase II and should be done by the end of the year.
- Danny Walz stated that the negotiations with the taxing entities will probably be between six and nine months.

Best-Devereux requested that the NWQ be a standing item on the Director's Report. Pack replied that it could be a recurring item on the Director's Report and suggested it be added to the Friday Board updates as well.

D. Redevelopment Program Update

Mike Williams, Terminal Redevelopment Program (TRP) Director, presented an update on the TRP (presentation on file). Main points included were:

- CGMP #4 – Landside and Airside Enabling status
- CGMP #5 – Terminal/South Concourse West/Gateway status

- CGMP #6 – Roadways/Parking Garage/Central Utility Plant status
- CGMP #7 – Baggage Handling System status
- CGMP #9 – Apron Paving – Taxilane 20/21
- North Concourse Project status
- Overall program construction and paving sequence
- Near term schedule
- Overall capital program costs

Pinnock asked if the \$737 million was the correct budget number for the North Concourse Project.

- Williams answered that number was a budget concept number from a couple of years ago and it focused primarily on the North Concourse Project itself. Currently the Airport has incorporated all the aspects of the North Concourse Project into the Airport Redevelopment Program. Additional scopes of work were added which included additional pavement, adding another gate, and extending the South Concourse East. The original number is not reflective of the current scope of work.
- Pack stated that what we are doing right now is looking at this as a fully integrated project and campus rather than separate. Working closely with Delta Air Lines, governmental folks, Airport employees and the Mayor's office on how to message this to different constituencies. The message is going to be what it actually is because we are now developing the true ARP as opposed to the TRP.

Patrick Leary arrived 8:55 am.

E. Light Rail Discussion

Pack informed the Board that he had met with Pinnock and Martin to talk about an at-grade light rail option. Pack wanted to bring the whole board in on this discussion and let members know where we are and what has changed. Essentially when the program was started the constrained landside area was book ended between I80 coming into the airport and the aircraft movement area to the north. When evaluating options for light rail coming into the Airport we initially looked at the elevated rail option because it was easier to work it into the constrained space. The constraint on the north side was actually because of the South Concourse. The South Concourse and the area south is an aircraft movement area that defines the north end of where the light rail could be brought in. Initially the South Concourse East was going to be occupied by the Terminal 1 carriers. The Airport sized for the largest aircraft that would use that aircraft movement area which was a 757. Since that time it has been established that Delta Air Lines will be taking the entire South Concourse. Delta Air Lines will be using 737 and A321 routinely and regularly as opposed to a 757 in that movement area. That gave us 25 more feet of space that we could work with on our roadway systems and light rail. The second major issue was the fact that the cost were very high for the elevated rail option ranging from \$64 to \$68 million. There was increasing concern about the ability for UTA to have the financing to pay for the elevated option. The Administration requested the Airport to consider an option that would be less expensive and still provide a high level of service. The at-grade light rail option being considered by Administration and UTA would cost roughly \$15 and still provide a high level of service.

Kevin Robins, Director of Engineering, presented an update regarding light rail. Main points included were:

- Overall Airport Redevelopment Program site and the location of the existing TRAX Station.
- The beginning point for the elevated and at grade track options.
- The elevated track option platform area.
- The at grade track option platform area.
- How to phase and construct at grade option and the impact to light rail service.

Miller requested that the passenger waiting area be enhanced to provide the passenger a high level of service.

Best-Devereux remarked that the at grade light rail is a viable alternative option given the problem that UTA won't have the money to do the raised platform. He wondered if there was an area passengers could wait inside until their train arrived. Robins responded that an area could be worked out. Discussion ensued regarding the UTA waiting area, looking at innovative ways to move people and their luggage on an escalator.

Pack notified the Board that he and Kevin Robins would attend the UTA Board meeting on September 27. It is anticipated that the UTA Board will make a recommendation.

The next Board meeting will be held on October 18, 2017.

J.T. Martin adjourned the meeting at 9:34 a.m.

J.T. Martin, Chair

Date

Jacqueline M. Biskupski, Mayor

Date

DEPARTMENT OF AIRPORTS
BOARD MEETING

18 October 2017

DISCUSSION ITEMS

SALT LAKE CITY AIRPORT BOARD

AGENDA: DISCUSSION ITEM (B)
DATE: 18 October 2017
TO: Airport Board
FROM: Russ Pack, Executive Director
SUBJECT: **Executive Director's Report**

Russ Pack will present a monthly informational report to the Board, may include:

1. TRP progress
2. Ground transportation update
3. Concessions and rental cars
4. Airport safety and security
5. Airport facilities and operations
6. General aviation
7. Passenger and airport users
8. Environmental matters
9. Financial condition
10. Legislative issues
11. Airlines
12. Communications and marketing

SALT LAKE CITY AIRPORT BOARD

AGENDA: DISCUSSION ITEM (C)
DATE: 18 October 2017
TO: Airport Board
FROM: Russ Pack, Executive Director
SUBJECT: **Terminal Redevelopment Program Update**

Mike Williams, Terminal Redevelopment Program (TRP) Director, will present an update on the SLC Terminal Redevelopment Program (presentation on file).

Airport Redevelopment Program

Status Update: 10-18-2017



Salt Lake City International Airport



CGMP# 4 – Landside and Airside Enabling

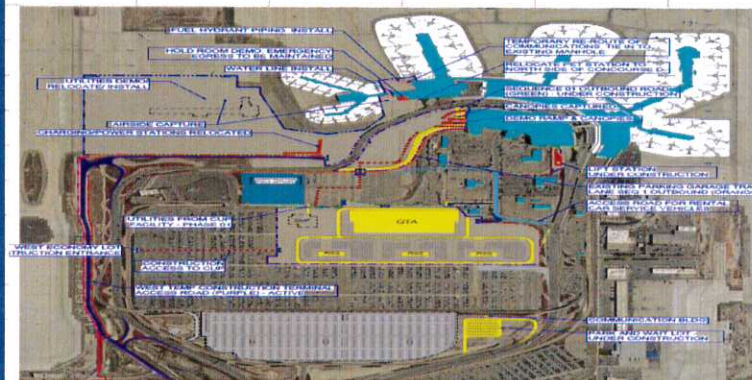
Project: CGMP# 4 - Landside and Airside Enabling

Budget: \$81.09M

EAC: \$77.89M

Terminal/South Concourse West/Gateway/Roadways/Airside and Landside Enabling and Central Utility Plant Hydronic Piping

Schedule		Current Status
Activity		Recent Milestones Achieved
Complete Seq 2 Tunnel Excavation	Dec 2016 A	* Mid-Concourse Tunnel Structural Tie-in Progressing
Complete SCW Surcharge	Dec 2016 A	* Mid-Concourse Tunnel Tie-in Mudslab and Waterproofing Underway
Complete West Lift Station Pumps	Mar 2017 A	* Close-out Process Underway
Complete SCW Ductbank	Mar 2017 A	* Final CGMP Close-out Dependent on Mid-Concourse Tunnel Construction Completion
Complete Gateway Hydronic Piping	May 2017 A	
Substantial Completion	Dec 2017	
Concerns/Issues/Risks		
* None at this time		



CGMP# 5 – Terminal/South Concourse West/Gateway

Project: CGMP# 5 - Terminal/Gateway/South Concourse West Budget: \$788.35M EAC: \$788.35M

Terminal/Gateway/South Concourse West - Foundations, Structure, Building Envelope and Build-out

		Current Status
Schedule		Recent Milestones Achieved
Activity	Target Date	
Start Driven Piles	Dec 2016 A	* SCW Structural Steel Erection nearing completion.
Complete Terminal Tunnel Backfill	Sep 2017 A	* Started Terminal Structural Steel Erection.
Complete SCW Slab on Grade	Sep 2017 A	* Completed Terminal Tunnel Concrete Lid Concrete
Complete SCW Structural Steel	Nov 2017	* Started SCW Exterior Studs and Sheathing.
Complete Terminal Foundations	Feb 2018	* Started SCW Restroom Plumbing Rough-in.
Complete Terminal Structural Stl	Jul 2018	* Started SCW Level 1 Overhead Plumbing Rough-in
Concerns/Issues/Risks		
* Structural Steel Erection progress.		



CGMP# 6 – Roadways/Parking Garage/Central Utility Plant

Project: CGMP# 6 - Parking Garage/Roadways/Central Utility Plant/Project-Wide Special Systems

Budget: \$363.86M EAC: \$363.86M

Parking Garage/Rental Car Ready Return/Elevated and At-Grade Roadways/Central Utility Plant/Project-Wide IT and Special Systems

		Current Status
Schedule		Recent Milestones Achieved
Activity	Target Date	
Issue NTP	Dec 2016 A	* Parking Garage Column Concrete complete.
Start Central Utility Plant Concrete	Feb 2017 A	
Start Parking Garage Driven Piles	Mar 2017 A	* Started Scoffolding for Parking Garage Level 2 Cor
Complete CUP Chiller Installation	Dec 2017	* Start construction of Inbound Detour 7.
CUP Operational	Mar 2018	* Complete Central Utility Plant Chiller Factory Witne Testing.
Parking Garage Roofing Complete	Aug 2019	* Prepare to demolish the Police Investigation Buildi
Concerns/Issues/Risks		
* None at this time.		



CGMP# 7 – Baggage Handling System

Project: CGMP# 7 - Baggage Handling System including TSA Screening Area

Budget: \$86.09M EAC: \$86.09M

Terminal/Gateway/South Concourse West and TSA Screening Area Complete Baggage Handling System IT and Special Systems

Current Status

Schedule

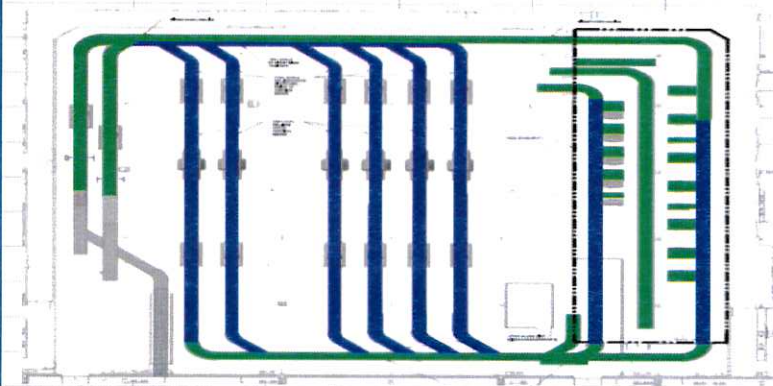
Recent Milestones Achieved

Activity	Target Date
Issue NTP	Sep 2016 A
Start BHS Hanger Installation	Aug 2017 A
Install TSA Provided Equipment	Jun 2019
Start BHS Testing and Commission	Nov 2019
Start TSA BHS Acceptance Testing	Mar 2020
BHS Substantial Completion	May 2020

- * BIM Coordination Sessions with MEP continue.
- * BHS Header Steel Installation Continues.
- * BHS Conveyor Fabrication Underway.
- * Completed BHS Analysis of Final Electrical Loads.

Concerns/Issues/Risks

- * None at this time.



CGMP# 9 – Apron Paving – Taxilane 20/21

Project: CGMP# 9 - Apron Paving - Taxilane 20/21 and Taxiway A/B

Budget: \$26.76M EAC: \$26.76M

Initial Portion of Apron Paving that will Utilize \$10 million in AIP Funding and also Support Fence Installation for North Concourse Site.

Current Status

Schedule

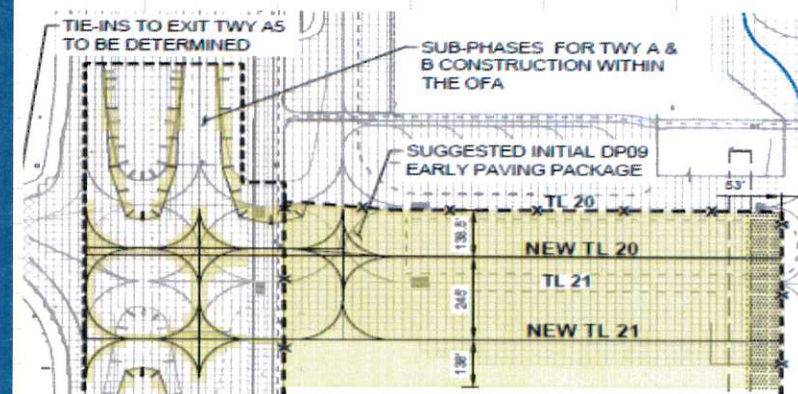
Recent Milestones Achieved

Activity	Target Date
Issue NTP	April 2017 A
Taxiway 'B' Reopens	Sep 2017 A
Taxilane 21 Reopens	Nov 2017
Taxiway 'B' Complete	Nov 2017
CGMP# 9 Bulletin# 1 Close-out	Mar 2018

- * Continued Taxiway 'A' construction.
- * Taxilane 20 PCC Construction Progressing.
- * Received Design Package# 9 (Terminal/SCW) Apron Paving and Fueling Bids from three bidders.

Concerns/Issues/Risks

- * None at this time.



North Concourse Project

Project: North Concourse Project

Budget: TBD EAC: TBD

North Concourse Phase 1 and Phase 2 and Associated Airfield Scope of Work

Current Status

Schedule

Recent Milestones Achieved

Activity	Target Date
Issued Design Documents	May 2017 A
Submit 5/12 Deliverable Comments	June 2017 A
Receive Enabling Design Package	June 2017 A
Receive CMAR/Consultant Estimate	July 2017 A
Complete Estimate Reconciliation	Oct 2017
Start Enabling Construction	Dec 2017

- * Finalizing AOJV and HDJV Estimates.
- * AOJV Conducted DP-15 Enabling Phase 1 Pre-bid Meeting
- * Completed Collaborative Review of 90% Phase 1 Design
- * Investigated condition of interior of Mid-Concourse Tunnel
- * Issued Trade Contractor RFP for Phase 1 Scopes.

Concerns/Issues/Risks

- * HOK Design Phase Document Level of Completion



Project Statistics

Safety Statistics Through 10/06/2017
808 Days without a Lost Time Injury
1,468,943 Hours Worked to Date

Trade Staffing 10/06/2017
640 Trade Workers on Site

Contract Local/Non-Local Awarded Statistics

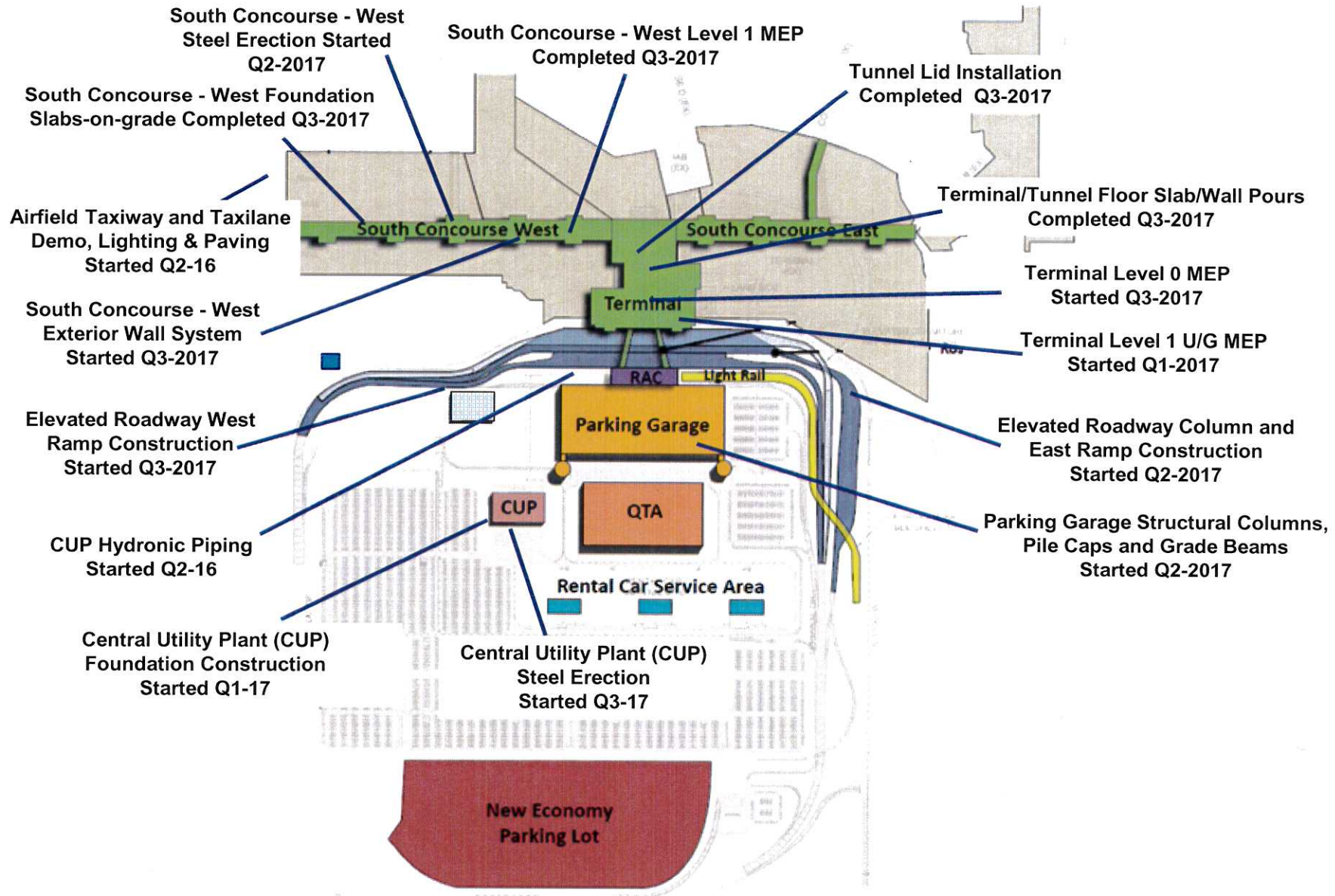
Local Trades	Dollar Value	Trade Count	Percentage
Total Local (Wasatch Front) Contractors	\$654,370,877	72	59%
Total Out of State Contractors	\$462,115,509	13	41%
Total Contract Awards	\$1,116,486,386	85	100%

Contract Union/Merit Shop Awarded Statistics

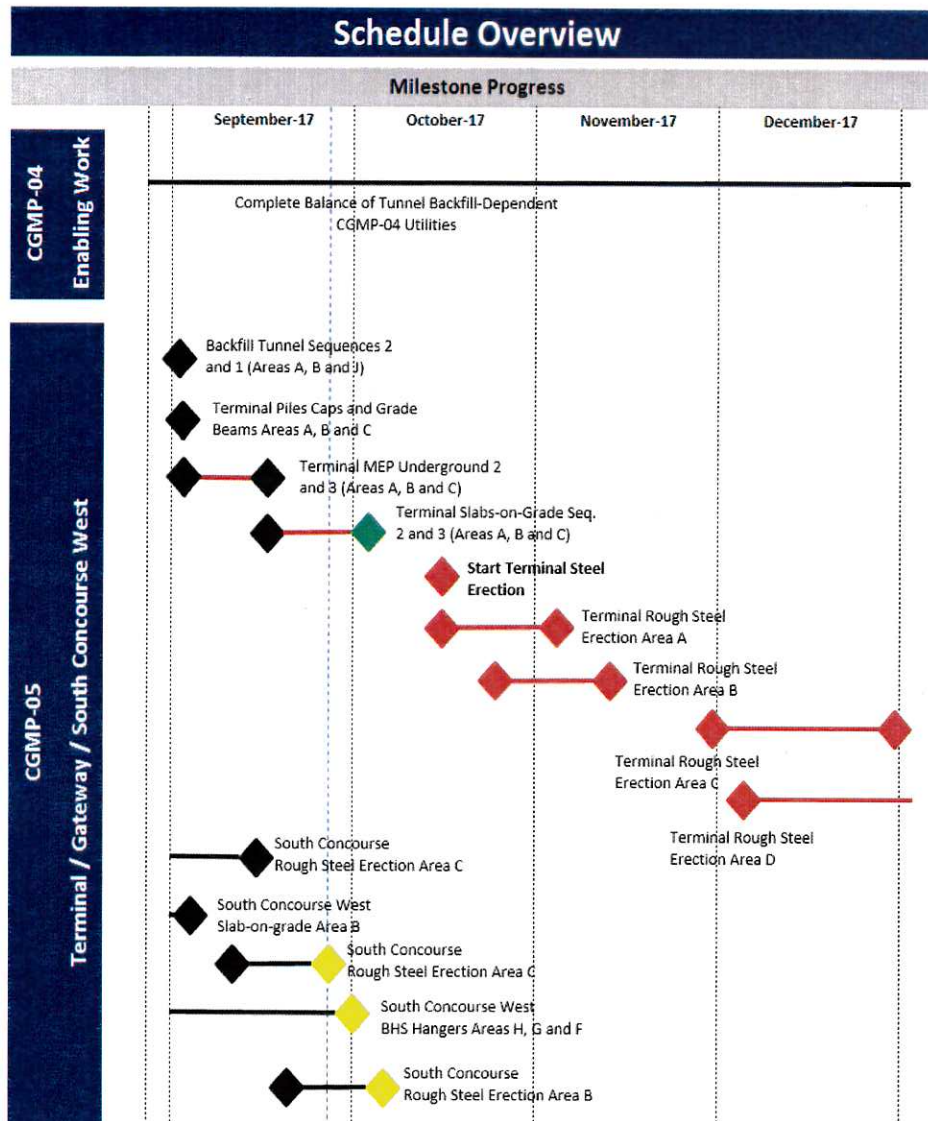
Union Trades	Dollar Value	Trade Count	Percentage
Total Union Contractors	\$455,654,558	21	41%
Total Merit Shop Contractors	\$660,831,828	64	59%
Total Contract Awards	\$1,116,486,386	85	100%



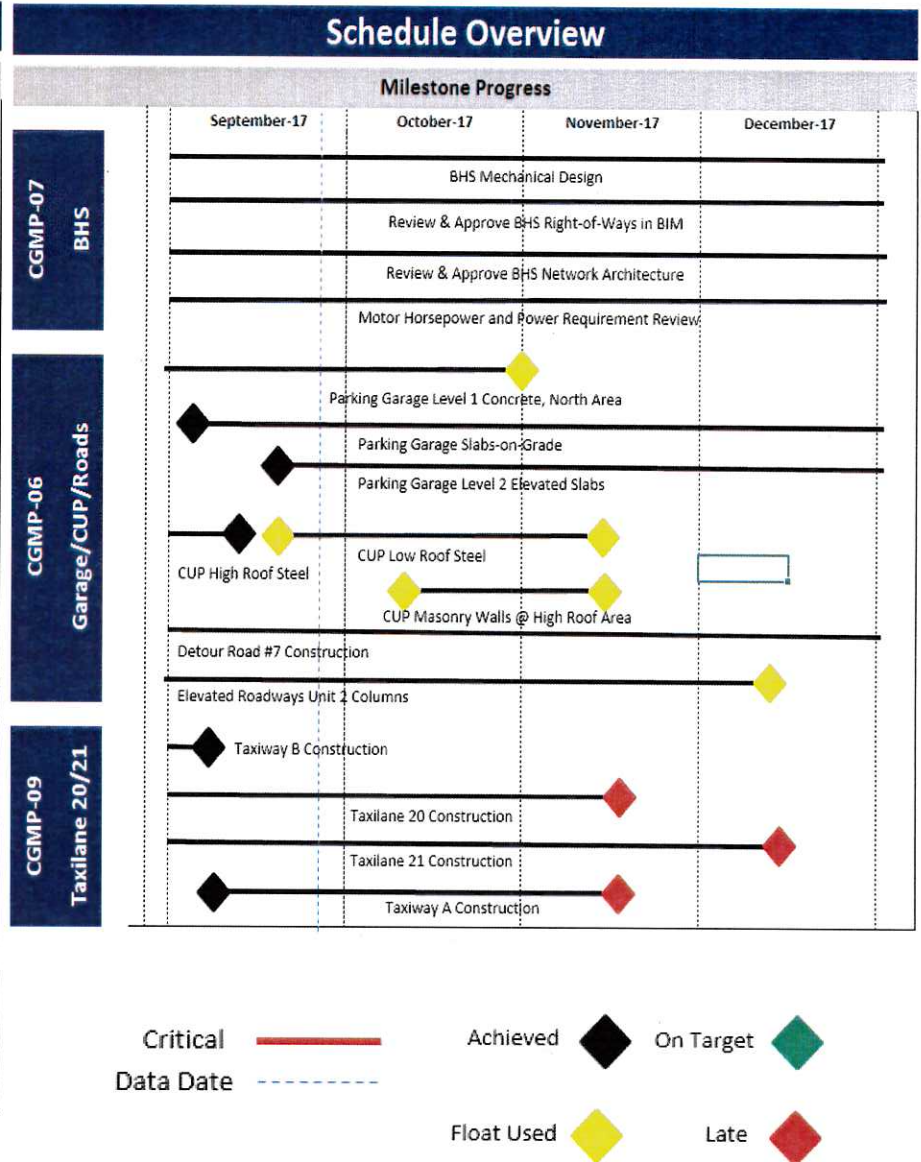
Overall Program Construction & Paving Sequence



Near Term Schedule



This month's schedule update indicates that critical path project activities are on schedule



Overall Capital Program Costs

Construction Budget September 2017	Budget	Spent	Committed	Uncommitted	EAC
Preconstruction Services	\$ 10,748,596	\$ 9,575,407	\$ 9,575,407	\$ -	\$ 9,575,407
General Conditions Services	\$ 91,179,758	\$ 33,269,921	\$ 78,593,872	\$ 11,127,306	\$ 89,721,178
CGMP 03 - QTA, RSS, South Parking Lot	\$ 94,000,000	\$ 88,721,327	\$ 88,721,326	\$ -	\$ 88,721,327
CGMP 04 - Landside/Airside Enabling Work	\$ 81,096,442	\$ 74,286,963	\$ 81,096,442	\$ -	\$ 78,417,393
CGMP 05 - Terminal, South Concourse West , Gateway	\$ 795,346,442	\$ 152,479,645	\$ 788,346,442	\$ -	\$ 788,346,442
CGMP 06 - Parking Deck, Roadways, Central Utility Plant	\$ 377,293,285	\$ 53,841,983	\$ 363,855,782	\$ -	\$ 363,855,782
CGMP 07 - Baggage Handling System	\$ 86,085,766	\$ 4,441,479	\$ 86,085,766	\$ -	\$ 86,085,766
CGMP 08 - Not Used	\$ -		\$ -	\$ -	\$ -
CGMP 09 - Apron Paving SCW/Hydrant Fueling	\$ 56,791,127	\$ 10,550,170	\$ 26,761,609	\$ 30,029,518	\$ 56,791,127
CGMP 10 - South Concourse East	\$ 212,143,940	\$ -	\$ -	\$ 212,143,940	\$ 212,143,940
CGMP 11 - Apron Paving SCE/Hydrant Fueling	\$ 75,699,182	\$ -	\$ -	\$ 75,699,182	\$ 75,699,182
Total Construction Budget	\$ 1,880,384,538	\$ 427,166,893	\$ 1,523,036,646	\$ 328,999,946	\$ 1,849,357,544
Soft Cost Budget	\$ 251,316,222	\$ 146,179,093	\$ 179,742,247	\$ 71,573,975	\$ 251,316,222
Owners Reserve	\$ 44,852,234	\$ -	\$ -	\$ 73,200,177	\$ 75,879,228
Total TRP Budget	\$ 2,176,552,994	\$ 573,345,986	\$ 1,702,778,893	\$ 473,774,098	\$ 2,176,552,994
North Concourse (NCP) Concept Budget	\$ 737,000,000	\$ 15,471,913	\$ 50,270,084	\$ 686,729,916	\$ 737,000,000
CIP Multi-Year Budget	\$ 191,432,000	\$ -	\$ -	\$ 191,432,000	\$ 191,432,000
Total Capital Program Budget	\$ 3,104,984,994	\$ 588,817,899	\$ 1,753,048,977	\$ 1,351,936,014	\$ 3,104,984,994



Job Progress Photos – Terminal Building



Installing rebar for critical Terminal Level 1 Area 'D' slab



Preparations for the final Terminal Tunnel lid pour.



Terminal Tunnel installation of hydronic piping



View across the Terminal Building ground floor slab



Job Progress Photos – South Concourse West



Extent of SCW turned over to other trades for fitout.

SCW construction progress



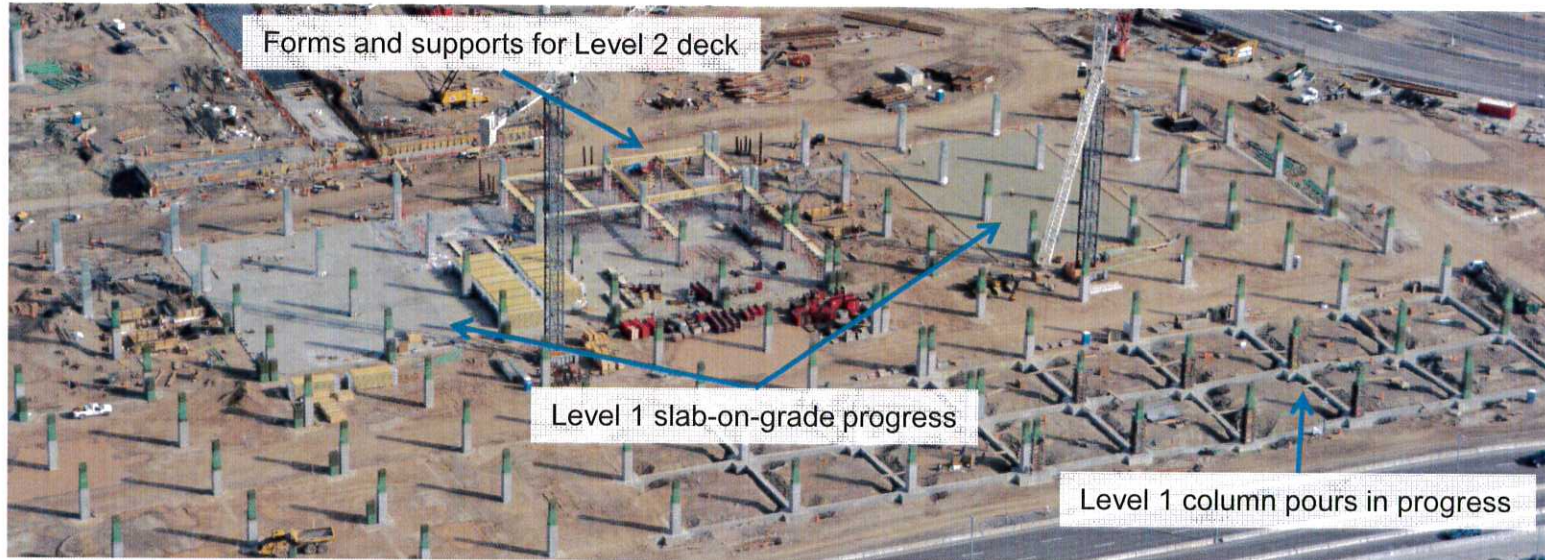
SCW exterior wall system installation in progress



SCW Level 2 elevated deck concrete finishing



Job Progress Photos – Parking Garage, Roadways, CUP



Parking Garage Progress.



Elevated Roadway exit ramp construction progress.



Central Utility Plant (CUP) structural steel and floor slab progress.



Job Progress Photos - Airfield



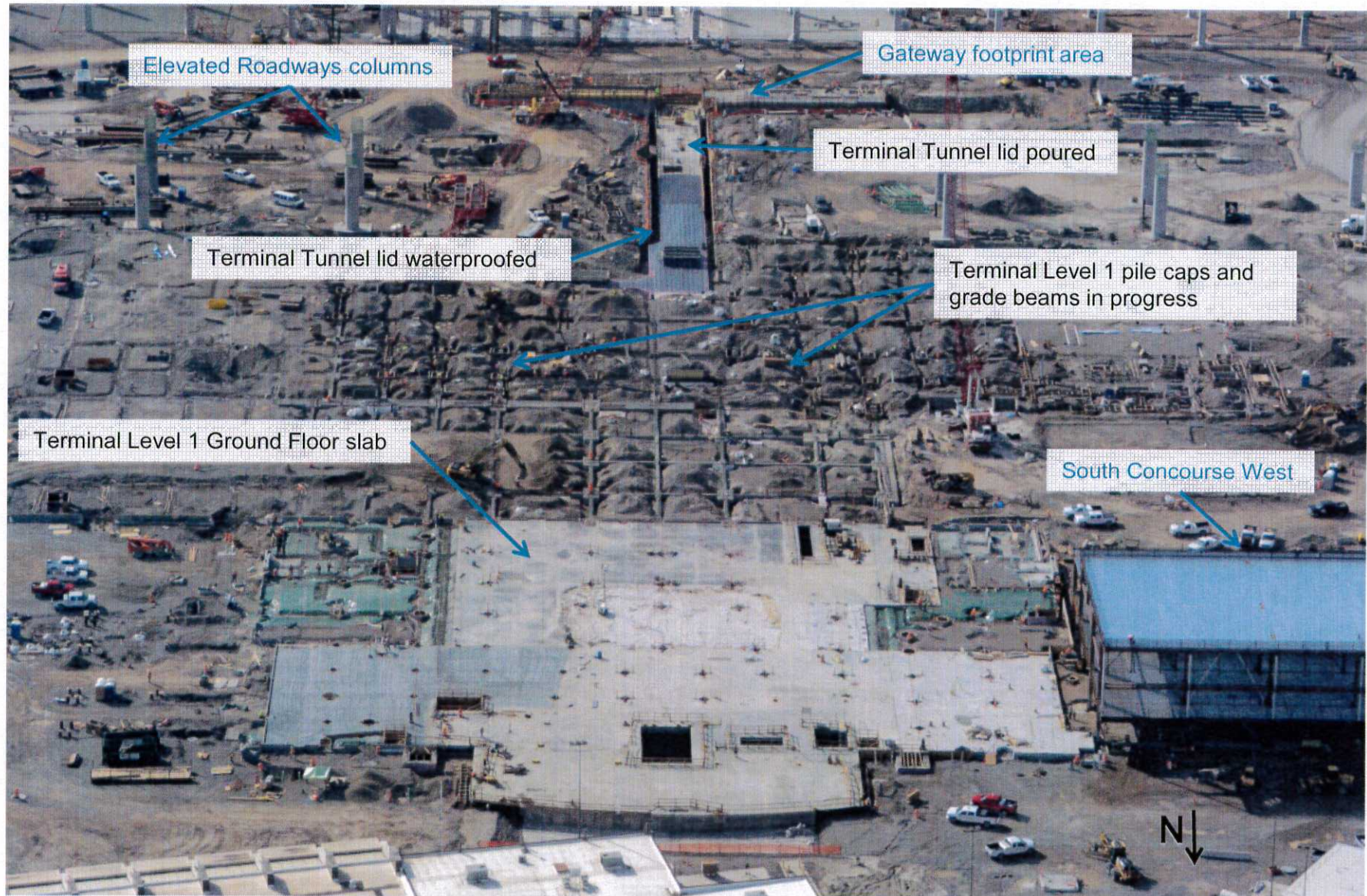
Taxiway 'A' paving and lighting reconfiguration in progress.



Paving Taxiway 20 & 21.



Job Progress Aerials

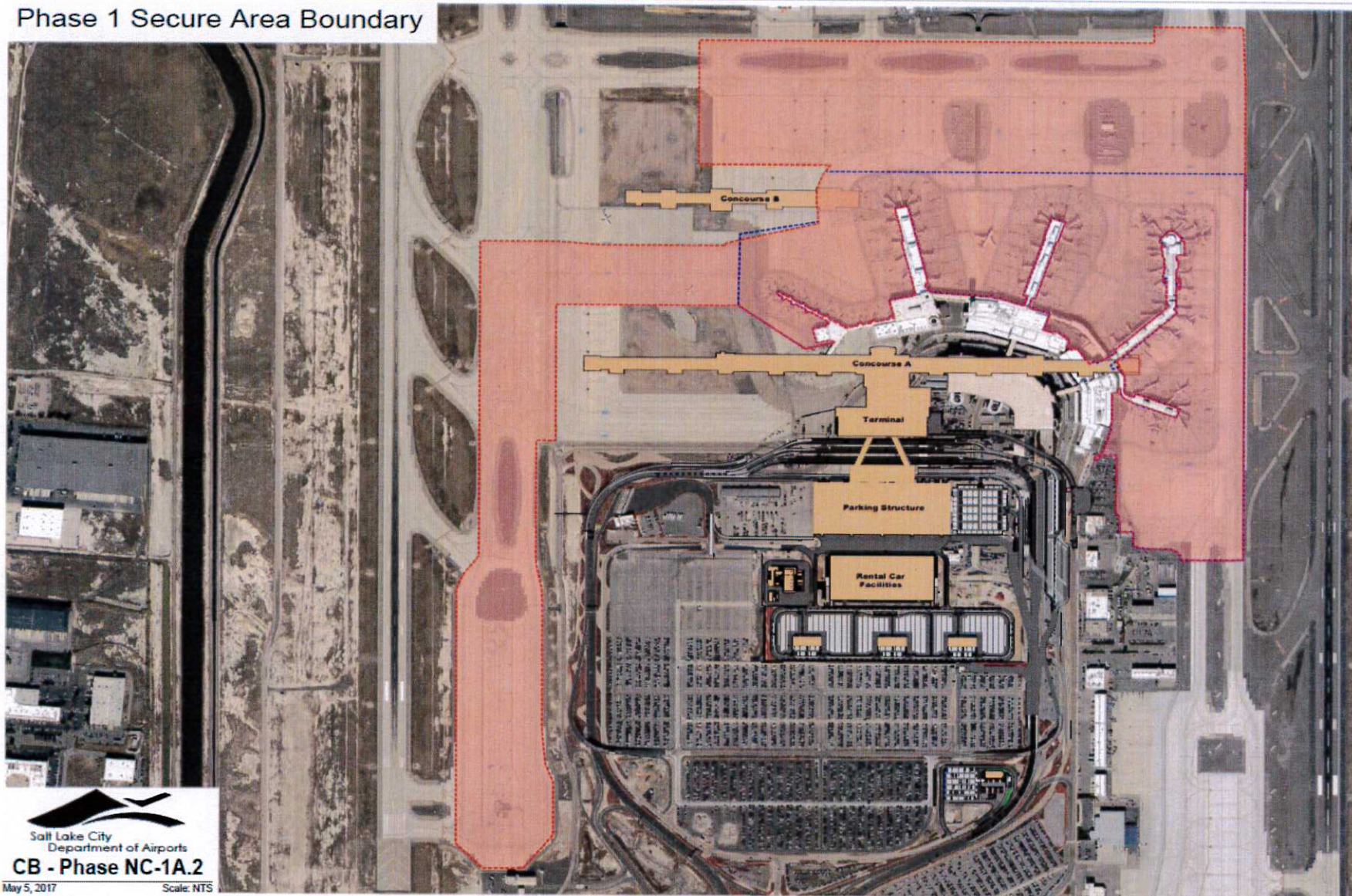


Terminal / Gateway Area

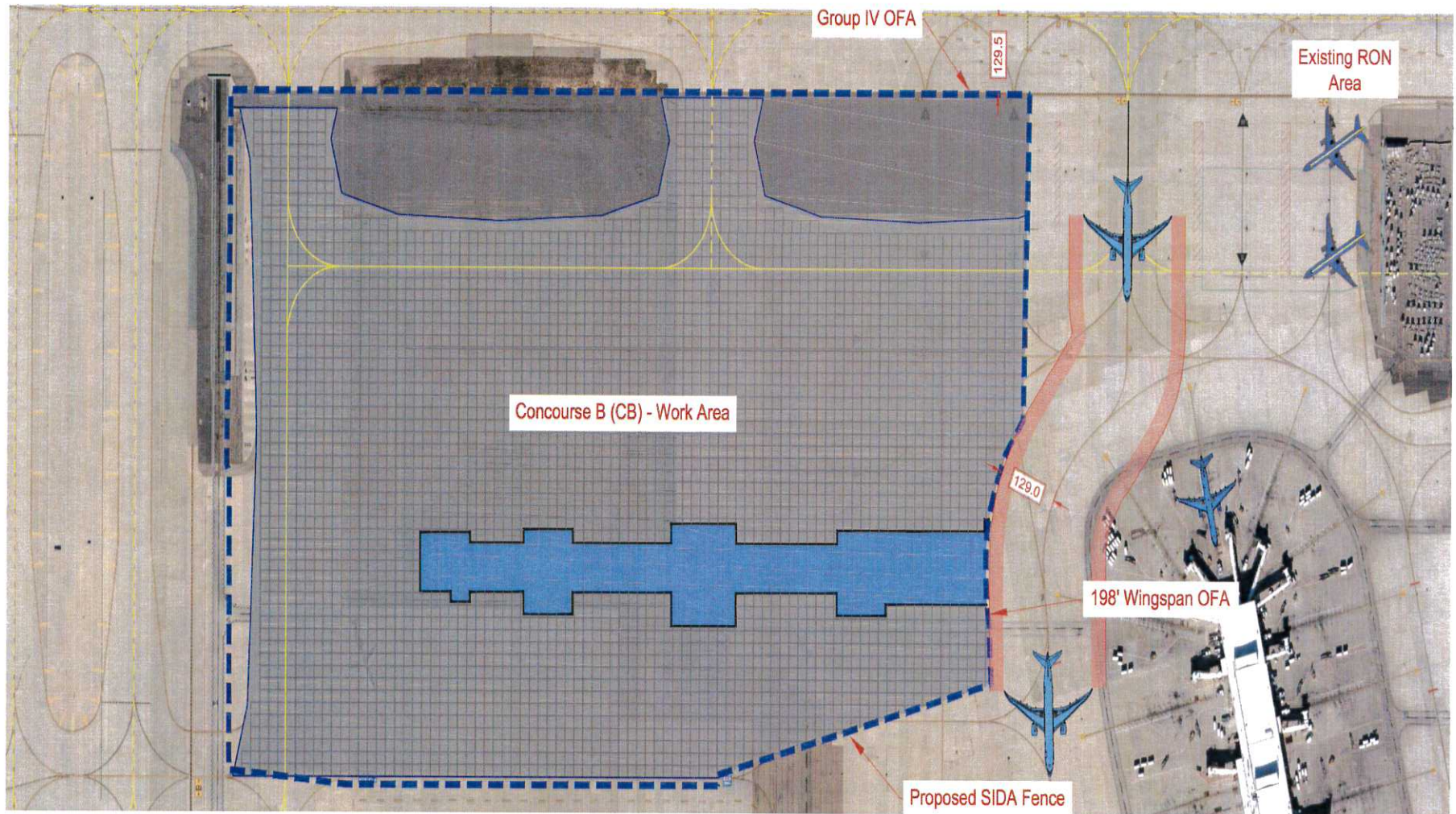


North Concourse Secure Area

Phase 1 Secure Area Boundary



AOJV NCP Phase 1 Work Area



SALT LAKE CITY AIRPORT BOARD

AGENDA: DISCUSSION ITEM (D)
DATE: 18 October 2017
TO: Airport Board
FROM: Russ Pack, Executive Director
SUBJECT: **Air Service Overview and Industry Trends**

David Dague, Executive Vice President, InterVistas, will present an overview on air service and industry trends.

DEPARTMENT OF AIRPORTS
BOARD MEETING

18 October 2017

INFORMATIONAL ITEMS

SALT LAKE CITY DEPARTMENT OF AIRPORTS
(An Enterprise Fund of Salt Lake City Corporation)
Statements of Net Position (Unaudited)
(Amounts in thousands)

<i>August</i>	2017	2016
ASSETS		
Current Assets		
Cash and cash equivalents	\$ 80,150	\$ 172,448
Restricted cash and cash equivalents	19,110	-
Investments	12,014	752
Airline and rental fees receivable	21,146	23,389
Other assets	3,763	3,885
Total current assets	136,183	200,474
Noncurrent Assets		
Restricted cash and cash equivalents	1,173,222	153,941
Investments	32,650	44,333
Other assets	2,001	1,104
Total noncurrent assets and investments	1,207,873	199,378
Capital assets		
Land	104,590	99,347
Building and improvements	1,369,273	1,278,012
Equipment	141,313	139,679
Construction in progress	454,277	235,293
Total capital assets - at cost	2,069,453	1,752,331
Less accumulated depreciation	934,061	878,318
Net capital assets	1,135,392	874,013
Total noncurrent assets	2,343,265	1,073,391
Total Assets	2,479,448	1,273,865
Deferred Outflows of Resources	11,948	10,181
Total Assets and Deferred Outflows of Resources	\$ 2,491,396	\$ 1,284,046

SALT LAKE CITY DEPARTMENT OF AIRPORTS
(An Enterprise Fund of Salt Lake City Corporation)
Statements of Net Position (Unaudited)
(Amounts in thousands)

<i>August</i>	2017	2016
LIABILITIES		
Current Liabilities		
Accounts payable	\$ 10,704	\$ 7,196
Accrued compensation	1,571	1,434
Interest payable	8,333	-
Other accrued liabilities	3,512	4,920
Deposits and advance rentals	205	400
Total current liabilities	24,325	13,950
Noncurrent Liabilities		
Revenue bonds payable	1,124,186	-
Noncurrent compensation liability	3,790	3,630
Net pension liability	27,424	25,465
Other accrued liabilities	9,559	3,593
Total noncurrent liabilities	1,164,959	32,688
Total Liabilities	1,189,284	46,638
Deferred Inflows of Resources	6,767	5,688
NET POSITION		
Net investment in capital assets	784,703	874,013
Restricted for		
Capital projects	195,298	153,941
Debt service	223,537	-
Unrestricted	91,807	203,766
Net Position	1,295,345	1,231,720
Total Liabilities, Deferred Inflows of Resources, and Net Position	\$ 2,491,396	\$ 1,284,046

SALT LAKE CITY DEPARTMENT OF AIRPORTS
(An Enterprise Fund of Salt Lake City Corporation)
Statements of Revenues, Expenses and Changes in Net Position (Unaudited)
(Amounts in thousands)

for the two month period ended August,

	2017	2016
Operating Revenues		
Airline revenue	\$ 12,764	\$ 11,758
Terminal concessions	3,285	3,122
Landside concessions	12,409	10,815
Lease revenue	972	922
General aviation	501	471
State aviation tax	613	508
Other revenue	1,337	606
Operating revenues	31,881	28,202
Less airline revenue sharing	(2,152)	(1,971)
Total operating revenues	29,729	26,231
Operating Expenses		
Salaries and benefits	8,890	8,470
Materials and supplies	1,402	1,427
Maintenance contracts	1,607	1,513
Charges and services	1,380	1,440
Utilities	1,293	1,173
Inter-governmental	1,093	1,020
Other expense	1,518	1,304
Total operating expenses before depreciation	17,183	16,347
Operating Income Before Depreciation & Amortization	12,546	9,884
Depreciation Expense	10,777	10,899
Operating Income/(Loss)	1,769	(1,015)
Non-Operating Revenues (Expenses)		
Passenger facility charges	8,024	7,315
Customer facility charges	3,286	3,199
Interest income	2,559	266
Interest expense	(7,708)	-
Net non-operating income	6,161	10,780
Contributions and Grants	(1,318)	(693)
Net Position		
Increase in net position	6,612	9,072
Net Position, beginning of period	1,288,733	1,222,648
Net Position, end of period	\$ 1,295,345	\$ 1,231,720

SALT LAKE CITY DEPARTMENT OF AIRPORTS
(An Enterprise Fund of Salt Lake City Corporation)
Operating Revenues and Expenditures to Budget (Unaudited)
(Amounts in thousands)

	JUL - AUG 2017 ACTUALS	JUL - AUG 2017 BUDGET	SURPLUS/ DEFICIT	PERCENT CHANGE
Revenues				
Landing Fees	\$ 5,791	\$ 5,703	\$ 88	1.5%
Fuel Farm	88	88	0	0.0%
Aircraft Remain Overnight Fees	63	53	9	17.7%
Cargo Buildings & Ramp Use Fee	263	267	(4)	-1.5%
Security Charges to TSA	216	55	162	296.2%
Extraordinary Service Charges	4	12	(7)	-62.9%
Passenger Boarding Bridges	290	303	(12)	-4.0%
Tenant Telephone Fees	53	55	(2)	-3.7%
Terminal Rents	5,902	5,711	191	3.4%
General Aviation Hangars	224	216	7	3.4%
FBO Hangars/Fuel Oil Royalty	67	52	15	28.2%
Flight Kitchens	355	329	26	7.9%
Other Buildings & Office Space	909	905	5	0.6%
Food Service & Vending	1,976	1,920	56	2.9%
News/Gift Shop	1,123	1,044	79	7.5%
Car Rental	6,141	5,232	909	17.4%
Leased Site Areas	357	376	(19)	-5.1%
Auto Parking/Ground Transportation	6,261	5,991	271	4.5%
Advertising	187	236	(49)	-20.7%
State Aviation Fuel Tax	613	535	79	14.7%
Military	-	26	(26)	-100.0%
Glycol Recycling Sales	11	37	(26)	-70.6%
ARFF Training	71	82	(11)	-12.9%
Auxiliary Airport Fuel Sales	211	155	56	36.1%
Other	705	170	535	314.7%
Less: Airline Revenue Sharing	(2,152)	(2,031)	(121)	5.97%
Total Operating Revenues	29,729	27,522	2,210	8.0%
Expenses				
Salary & Wages	5,927	5,833	(94)	-1.6%
Employee Benefits	3,168	3,578	409	11.4%
Maintenance Supplies	790	2,687	1,898	70.6%
Automotive Supplies	387	480	94	19.5%
Other Supplies	226	475	250	52.5%
Insurance Premiums	1,338	631	(707)	-112.0%
Janitorial Service	1,191	1,209	18	1.5%
Maintenance Contracts	416	451	35	7.8%
Other Contractual Services	1,100	1,200	100	8.3%
Professional & Tech Service	280	951	671	70.6%
Utilities	1,293	2,003	710	35.5%
Administrative Service Fee	259	250	(9)	-3.8%
Aircraft Rescue Fire Fighting	834	758	(76)	-10.0%
Other Expenses	180	620	440	70.9%
Operating Expenses Before Capitalized Salaries	17,389	21,126	3,737	17.7%
Capitalized Salaries	206	206	-	0.0%
Total Operating Expenses	17,183	20,920	3,738	17.9%
Operating Income	\$ 12,546	\$ 6,602	\$ 5,944	90.0%

SALT LAKE CITY DEPARTMENT OF AIRPORTS
(An Enterprise Fund of Salt Lake City Corporation)
Operating Revenues and Expenditures to Prior Year (Unaudited)
(Amounts in thousands)

	JUL-AUG 2017	JUL-AUG 2016	SURPLUS/ (DEFICIT)	PERCENT CHANGE
Revenues				
Landing Fees	\$ 5,791	\$ 5,269	\$ 521	9.9%
Fuel Farm	88	88	-	0.0%
Aircraft Remain Overnight Fees	63	53	9	17.7%
Cargo Buildings & Ramp Use Fee	263	266	(3)	-1.1%
Security Charges to TSA	216	26	190	737.1%
Extraordinary Service Charges	4	11	(7)	-61.9%
Passenger Boarding Bridges	290	280	10	3.6%
Tenant Telephone Fees	53	55	(2)	-3.7%
Terminal Rents	5,902	5,395	507	9.4%
General Aviation Hangars	224	221	2	1.0%
FBO Hangars/Fuel Oil Royalty	67	52	15	28.3%
Flight Kitchens	355	316	38	12.2%
Other Buildings & Office Space	909	913	(4)	-0.4%
Food Service & Vending	1,976	1,871	105	5.6%
News/Gift Shops	1,123	1,026	97	9.5%
Car Rental	6,141	5,038	1,103	21.9%
Leased Site Areas	357	339	18	5.3%
Auto Parking/Ground Transportation	6,261	5,770	491	8.5%
Advertising	187	225	(39)	-17.2%
State Aviation Fuel Tax	613	508	105	20.7%
Glycol Recycling Sales	11	34	(23)	-67.6%
ARFF Training	71	81	(10)	-12.2%
Auxiliary Airport Fuel Sales	211	-	211	100.0%
Other	705	365	340	93.4%
Less: Airline Revenue Sharing	(2,152)	(1,971)	(181)	0.0%
Operating Revenues	29,729	26,231	3,498	13.3%
Expenses				
Salary & Wages	\$ 5,927	5,572	355	6.4%
Employee Benefits	3,168	3,082	86	2.8%
Maintenance Supplies	790	812	(22)	-2.7%
Automotive Supplies	387	333	54	16.1%
Other Supplies	226	282	(57)	-20.1%
Insurance Premiums	1,338	1,301	37	2.8%
Janitorial Service	1,191	1,116	75	6.8%
Maintenance Contracts	416	398	18	4.5%
Other Contractual Services	1,100	1,108	(8)	-0.7%
Professional & Tech Service	280	332	(53)	-15.8%
Utilities	1,293	1,173	120	10.2%
Administrative Service Fee	259	241	18	7.6%
Aircraft Rescue Fire Fighting	834	779	55	7.0%
Other Expenses	180	3	177	0.0%
Operating Expenses Before Capitalized Salaries	17,389	16,533	856	5.2%
Capitalized Salaries	206	185	21	11.3%
Total Operating Expenses	17,183	16,347	836	5.1%
Operating Income	\$ 12,546	\$ 9,884	\$ 2,662	26.9%



**SALT LAKE CITY INTERNATIONAL AIRPORT
AIR TRAFFIC STATISTICS AND ACTIVITY REPORT
EIGHT MONTHS ENDED AUGUST 2017**

	AUGUST 2017	CHANGE	YTD 2017	CHANGE	12 MO ROLLING Ending 08/2017	CHANGE
PASSENGERS						
<i>DOMESTIC</i>						
Enplaned	1,084,003	7.35%	7,883,504	4.32%	11,533,631	4.43%
Deplaned	1,078,616	7.49%	7,855,203	4.25%	11,508,888	4.30%
TOTAL DOMESTIC	2,162,619	7.42%	15,738,707	4.29%	23,042,519	4.37%
<i>INTERNATIONAL</i>						
Enplaned	47,930	11.36%	315,495	26.28%	441,341	33.51%
Deplaned	51,069	13.01%	333,499	28.37%	457,820	34.69%
TOTAL INTERNATIONAL	98,999	12.21%	648,994	27.34%	899,161	34.11%
TOTAL PASSENGERS	2,261,618	7.62%	16,387,701	5.04%	23,941,680	5.24%
LANDED WEIGHT						
Air Carriers	1,229,646,553	4.22%	9,132,258,216	5.29%	13,395,862,274	5.98%
Cargo Carriers	97,630,564	7.75%	724,350,141	5.03%	1,119,041,012	3.29%
TOTAL LANDED WEIGHT (LBS)	1,327,277,117	4.48%	9,856,608,357	5.27%	14,514,903,286	5.77%
MAIL						
Enplaned	2,371,289	8.97%	15,861,439	14.65%	22,365,256	3.36%
Deplaned	1,298,024	29.72%	8,905,115	54.68%	13,227,660	27.77%
TOTAL MAIL (LBS)	3,669,313	15.50%	24,766,554	26.41%	35,592,916	11.26%
CARGO						
Enplaned	15,112,856	15.20%	116,975,613	8.01%	174,484,418	3.32%
Deplaned	18,551,516	14.52%	131,104,139	8.94%	198,697,913	9.14%
TOTAL CARGO (LBS)	33,664,372	14.82%	248,079,752	8.50%	373,182,331	6.34%
MAIL & CARGO						
Enplaned	7,556	15.18%	58,488	8.01%	87,242	3.32%
Deplaned	9,276	14.52%	65,552	8.94%	99,349	9.14%
TOTAL MAIL & CARGO (TONS)	16,832	14.82%	124,040	8.50%	186,591	6.34%
AIRCRAFT OPERATIONS						
Passenger Aircraft	22,490	2.86%	168,630	2.87%	248,160	3.71%
All-Cargo Aircraft	1,716	-0.35%	13,156	1.28%	20,204	2.38%
General Aviation	4,588	-1.33%	34,146	-2.28%	48,646	-4.27%
Military	715	29.76%	4,629	3.98%	7,381	-2.66%
TOTAL AIRCRAFT OPERATIONS	29,509	2.51%	220,561	1.97%	324,391	2.20%

**SALT LAKE CITY INTERNATIONAL AIRPORT
PASSENGER TRAFFIC REPORT
EIGHT MONTHS ENDED AUGUST 2017**

	AUGUST 2016	AUGUST 2017	% CHANGE	YTD 2016	YTD 2017	% CHANGE	12 MO ROLLING Ending 08/2017	% CHANGE
ENPLANED PASSENGERS								
AIR CANADA	2,565	2,685	4.7%	7,589	13,721	80.8%	19,185	152.8%
ALASKA	29,517	27,280	-7.6%	186,722	202,369	8.4%	297,550	12.7%
Horizon Air / Alaska	6,147	1,907	-69.0%	44,001	27,993	-36.4%	42,826	-34.3%
Skywest / Alaska	6,464	7,808	20.8%	59,033	51,213	-13.2%	73,060	-14.3%
AMERICAN	55,209	57,673	4.5%	427,192	432,907	1.3%	603,371	15.5%
American Eagle/Republic	506	-	-100.0%	6,434	-	-100.0%	442	-97.1%
Compass	6,164	2,251	-63.5%	42,749	28,715	-32.8%	47,941	3.9%
Envoy Air	-	-	0.0%	19,409	1,137	-94.1%	5,518	-76.0%
American/Mesa Air	-	-	0.0%	2,893	-	-100.0%	-	-100.0%
SkyWest (American)	4,215	10,524	149.7%	27,736	68,329	146.4%	89,909	105.4%
DELTA	529,950	601,723	13.5%	3,873,231	4,289,452	10.7%	6,217,679	10.4%
SkyWest (Delta Connection)	191,636	189,665	-1.0%	1,457,295	1,370,789	-5.9%	2,093,594	-3.5%
Compass (Delta Connection)	14,689	11,388	-22.5%	99,896	47,197	-52.8%	68,418	-56.8%
FRONTIER	21,433	18,692	-12.8%	150,712	159,112	5.6%	239,816	12.7%
JETBLUE	21,917	25,117	14.6%	172,692	218,595	26.6%	302,925	26.0%
KLM ROYAL DUTCH AIRLINES	2,575	3,318	28.9%	8,438	14,954	77.2%	19,947	136.4%
SOUTHWEST	111,191	117,569	5.7%	831,840	837,314	0.7%	1,232,834	1.3%
UNITED	15,982	25,895	62.0%	156,000	212,496	36.2%	289,379	26.2%
Express Jet	-	-	0.0%	446	-	-100.0%	-	-100.0%
Mesa Airlines (United Express)	152	-	-100.0%	2,012	6,867	241.3%	8,190	197.6%
Republic Airways (United)	1,156	3,054	164.2%	4,900	32,496	563.2%	42,835	433.1%
Shuttle America (United Express)	372	-	-100.0%	8,929	-	-100.0%	742	-94.7%
SkyWest (United Express)	30,214	24,654	-18.4%	210,126	178,027	-15.3%	269,432	-10.8%
Trans States	195	-	-100.0%	3,291	232	-93.0%	853	-74.1%
US AIRWAYS	-	-	0.0%	-	-	0.0%	-	-100.0%
SkyWest (US Airways Express)	-	-	0.0%	-	-	0.0%	-	-100.0%
Charters	618	730	18.1%	2,978	5,084	70.7%	8,526	102.9%
TOTAL ENPLANED PASSENGERS	1,052,867	1,131,933	7.5%	7,806,544	8,198,999	5.0%	11,974,972	5.3%
DEPLANED PASSENGERS								
AeroMexico	-	-	0.0%	5	-	-100.0%	-	-100.0%
AIR CANADA	2,579	2,551	-1.1%	7,780	13,408	72.3%	19,668	152.8%
ALASKA AIR	29,665	27,673	-6.7%	182,587	198,073	8.5%	289,376	11.6%
Horizon Air / Alaska	6,002	1,561	-74.0%	42,499	24,793	-41.7%	39,281	-38.1%
Skywest / Alaska	6,220	8,184	31.6%	59,924	53,944	-10.0%	76,243	-12.5%
AMERICAN	53,235	55,576	4.4%	424,588	431,987	1.7%	604,115	15.8%
American Eagle/Republic	618	-	-100.0%	6,555	-	-100.0%	427	-97.2%
Compass	5,892	2,246	-61.9%	41,615	28,501	-31.5%	43,534	-3.1%
Envoy Air (American)	-	-	0.0%	18,048	1,017	-94.4%	5,671	-74.1%
American/Mesa Air	-	-	0.0%	3,210	-	-100.0%	-	-100.0%
SkyWest (American)	3,980	9,985	150.9%	26,798	65,775	145.4%	87,224	105.9%
DELTA	533,016	606,050	13.7%	3,872,269	4,285,366	10.7%	6,220,309	10.3%
SkyWest (Delta Connection)	190,693	188,317	-1.2%	1,459,963	1,360,518	-6.8%	2,084,205	-4.3%
Compass (Delta Connection)	14,871	11,450	-23.0%	98,134	46,728	-52.4%	67,900	-56.6%
FRONTIER	21,275	18,001	-15.4%	151,128	163,348	8.1%	244,233	14.0%
JETBLUE	22,367	25,381	13.5%	172,128	218,251	26.8%	303,937	26.8%
KLM ROYAL DUTCH AIRLINES	3,092	5,200	68.2%	10,009	30,025	200.0%	35,880	258.5%
SOUTHWEST	109,103	115,332	5.7%	831,931	837,533	0.7%	1,233,758	1.3%
UNITED	14,031	23,849	70.0%	153,700	203,824	32.6%	277,503	23.0%
Express Jet	-	-	0.0%	452	-	-100.0%	-	-100.0%
Mesa Airlines / United Express	151	-	-100.0%	2,053	7,192	250.3%	8,576	209.7%
Republic Airways (United)	1,270	2,885	127.2%	5,325	33,932	537.2%	45,169	384.2%
Shuttle America (United Express)	421	-	-100.0%	9,090	-	-100.0%	743	-94.7%
SkyWest (United Express)	29,351	24,920	-15.1%	207,652	178,988	-13.8%	268,846	-8.8%
Trans States	182	-	-100.0%	3,274	221	-93.2%	802	-75.5%
US AIRWAYS	-	-	0.0%	-	-	0.0%	-	-100.0%
SkyWest (US Airways Express)	-	-	0.0%	-	-	0.0%	-	-100.0%
Charters	670	524	-21.8%	4,287	5,278	23.1%	9,308	54.0%
TOTAL DEPLANED PASSENGERS	1,048,684	1,129,685	7.7%	7,795,004	8,188,702	5.1%	11,966,708	5.2%
TOTAL PASSENGERS*	2,101,551	2,261,618	7.6%	15,601,548	16,387,701	5.0%	23,941,680	5.2%
INTERNATIONAL - ENPLANED								
AIR CANADA	2,565	2,685	4.7%	7,589	13,721	80.8%	19,185	152.8%
DELTA	27,784	32,646	17.5%	173,186	224,898	29.9%	313,409	36.5%
SkyWest (Delta Connection)	6,937	8,022	15.6%	49,575	60,662	22.4%	87,467	27.2%
Compass	3,180	1,259	-60.4%	11,059	1,259	-88.6%	1,332	-91.7%
KLM ROYAL DUTCH AIRLINES	2,575	3,318	28.9%	8,438	14,954	77.2%	19,947	136.4%
Charters	-	-	0.0%	-	1	100.0%	1	-99.4%
TOTAL ENPLANED INTERNATIONAL	43,041	47,930	11.4%	249,847	315,495	26.3%	441,341	33.5%
AeroMexico	-	-	0.0%	5	-	-100.0%	-	-100.0%
AIR CANADA	2,579	2,551	-1.1%	7,780	13,408	72.3%	19,668	152.8%
DELTA	29,370	33,779	15.0%	176,304	229,361	30.1%	316,162	35.9%
SkyWest (Delta Connection)	6,933	8,243	18.9%	55,642	59,409	6.8%	84,719	12.6%
Compass	3,215	1,296	-59.7%	10,053	1,296	-87.1%	1,391	-90.2%
KLM ROYAL DUTCH AIRLINES	3,092	5,200	68.2%	10,009	30,025	200.0%	35,880	258.5%
Charters	-	-	0.0%	-	-	0.0%	-	-100.0%
TOTAL DEPLANED INTERNATIONAL	45,189	51,069	13.0%	259,793	333,499	28.4%	457,820	34.7%
TOTAL INTERNATIONAL PASSENGERS	88,230	98,999	12.2%	509,640	648,994	27.3%	899,161	34.1%

*Includes International

SALT LAKE CITY INTERNATIONAL AIRPORT
EIGHT MONTHS ENDED AUGUST 2017
Based on Total Enplanements

MARKET SHARE

	AUGUST 2016	MARKET SHARE	AUGUST 2017	MARKET SHARE	YTD 2016	MARKET SHARE	YTD 2017	MARKET SHARE	12 MO ROLLING Ending 08/2016	12 MO ROLLING Ending 08/2017	MARKET SHARE
AIR CANADA	2,565	0.24%	2,685	0.24%	7,589	0.10%	13,721	0.17%	7,589	19,185	0.16%
ALASKA	42,128	4.00%	36,995	3.27%	289,756	3.71%	281,575	3.43%	414,415	413,436	3.45%
AMERICAN	66,094	6.28%	70,448	6.22%	526,413	6.74%	531,088	6.48%	653,711	747,181	6.24%
DELTA	736,275	69.93%	802,776	70.92%	5,430,422	69.56%	5,707,438	69.61%	7,960,156	8,379,691	69.98%
FRONTIER	21,433	2.04%	18,692	1.65%	150,712	1.93%	159,112	1.94%	212,778	239,816	2.00%
JETBLUE	21,917	2.08%	25,117	2.22%	172,692	2.21%	218,595	2.67%	240,441	302,925	2.53%
KLM ROYAL DUTCH	2,575	0.24%	3,318	0.29%	8,438	0.11%	14,954	0.18%	8,438	19,947	0.17%
SOUTHWEST	111,191	10.56%	117,569	10.39%	831,840	10.66%	837,314	10.21%	1,217,464	1,232,834	10.30%
UNITED	48,071	4.57%	53,603	4.74%	385,704	4.94%	430,118	5.25%	560,028	611,431	5.11%
US AIRWAYS	-	0.00%	-	0.00%	-	0.00%	-	0.00%	95,181	-	0.00%
Charters	618	0.06%	730	0.06%	2,978	0.04%	5,084	0.06%	4,203	8,526	0.07%
TOTAL ENPLANEMENTS	1,052,867	100%	1,131,933	100%	7,806,544	100%	8,198,999	100%	11,374,404	11,974,972	100%

PERCENT CHANGE YOY

	AUGUST 2016	AUGUST 2017	PERCENT CHANGE	YTD 2016	YTD 2017	PERCENT CHANGE	12 MO ROLLING Ending 08/2016	12 MO ROLLING Ending 08/2017	PERCENT CHANGE
AIR CANADA	2,565	2,685	4.68%	7,589	13,721	80.80%	7,589	19,185	152.80%
ALASKA	42,128	36,995	-12.18%	289,756	281,575	-2.82%	414,415	413,436	-0.24%
AMERICAN	66,094	70,448	6.59%	526,413	531,088	0.89%	653,711	747,181	14.30%
DELTA	736,275	802,776	9.03%	5,430,422	5,707,438	5.10%	7,960,156	8,379,691	5.27%
FRONTIER	21,433	18,692	-12.79%	150,712	159,112	5.57%	212,778	239,816	12.71%
JETBLUE	21,917	25,117	14.60%	172,692	218,595	26.58%	240,441	302,925	25.99%
KLM ROYAL DUTCH	2,575	3,318	28.85%	8,438	14,954	77.22%	8,438	19,947	136.39%
SOUTHWEST	111,191	117,569	5.74%	831,840	837,314	0.66%	1,217,464	1,232,834	1.26%
UNITED	48,071	53,603	11.51%	385,704	430,118	11.52%	560,028	611,431	9.18%
US AIRWAYS	-	-	0.00%	-	-	0.00%	95,181	-	-100.00%
Charters	618	730	18.12%	2,978	5,084	70.72%	4,203	8,526	102.86%
TOTAL ENPLANEMENTS	1,052,867	1,131,933	7.5%	7,806,544	8,198,999	5.0%	11,374,404	11,974,972	5.3%

**SALT LAKE CITY INTERNATIONAL AIRPORT
LANDING ACTIVITY
EIGHT MONTHS ENDED AUGUST 2017**

	AUGUST 2016	AUGUST 2017	CHANGE	YTD 2016	YTD 2017	CHANGE	12 MO ROLLING Ending 08/2017	% CHANGE
TOTAL NUMBER OF LANDINGS								
SCHEDULED CARRIERS								
AEROMEXICO	-	-	0.0%	1	-	-100.0%	-	-100.0%
AIR CANADA	30	31	3.3%	96	184	91.7%	279	190.6%
ALASKA	240	201	-16.3%	1,537	1,628	5.9%	2,478	9.0%
Horizon Air / Alaska	93	33	-64.5%	729	446	-38.8%	696	-36.2%
Skywest / Alaska	111	119	7.2%	1,026	812	-20.9%	1,172	-22.3%
AMERICAN	415	396	-4.6%	3,148	3,158	0.3%	4,437	16.8%
Compass	88	35	-60.2%	607	463	-23.7%	700	7.0%
American Eagle/Republic	9	-	-100.0%	93	-	-100.0%	6	-97.2%
American/Mesa Air	-	-	0.0%	52	-	-100.0%	2	-96.7%
Envoy Air (American)	1	-	-100.0%	332	16	-95.2%	93	-76.7%
SkyWest (American)	86	167	94.2%	546	1,133	107.5%	1,529	72.8%
DELTA	3,856	4,290	11.3%	27,780	31,295	12.7%	45,225	12.6%
SkyWest (Delta Connection)	3,649	3,487	-4.4%	27,986	25,972	-7.2%	39,682	-4.6%
Compass (Delta Connection)	232	171	-26.3%	1,546	664	-57.1%	982	-58.9%
FRONTIER	148	105	-29.1%	1,072	929	-13.3%	1,466	-3.3%
JETBLUE	159	186	17.0%	1,212	1,642	35.5%	2,279	32.6%
KLM ROYAL DUTCH AIRLINES	13	13	0.0%	43	69	60.5%	95	120.9%
SOUTHWEST	856	1,004	17.3%	6,482	7,439	14.8%	10,716	10.4%
UNITED	108	186	72.2%	1,193	1,577	32.2%	2,185	22.3%
Express Jet	4	-	-100.0%	14	-	-100.0%	1	-94.1%
Mesa / United Express	2	-	-100.0%	28	99	253.6%	118	210.5%
Republic Airways Holdings	19	43	126.3%	80	509	536.3%	670	375.2%
SkyWest (United Express)	457	380	-16.8%	3,324	2,861	-13.9%	4,327	-10.8%
Shuttle America (United Express)	6	-	-100.0%	135	-	-100.0%	12	-94.3%
Trans States	4	-	-100.0%	71	5	-93.0%	18	-74.6%
US AIRWAYS	-	-	0.0%	-	-	0.0%	-	-100.0%
SkyWest (US Airways)	-	-	0.0%	-	-	0.0%	-	-100.0%
SUBTOTAL SCHEDULED CARRIERS:	10,586	10,847	2.5%	79,133	80,901	2.2%	119,168	2.8%
CHARTER CARRIERS								
ALLEGiant AIR	-	1	100.0%	3	4	33.3%	14	75.0%
BIGHORN AIRWAYS	-	-	0.0%	3	-	-100.0%	-	-100.0%
BOMBARDIER BUSINESS JETS	12	19	58.3%	152	177	16.4%	259	18.8%
BOUTIQUE AIR	128	109	-14.8%	643	928	44.3%	1,408	119.0%
D&D AVIATION	13	-	-100.0%	55	-	-100.0%	1	-98.6%
DELTA PRIVATE JETS	10	20	100.0%	111	147	32.4%	212	43.2%
EXECUTIVE JET MANAGEMENT	4	11	175.0%	76	94	23.7%	127	25.7%
FLIGHT OPTIONS	7	12	71.4%	96	91	-5.2%	128	-8.6%
KEYLIME AIR	-	2	100.0%	11	8	-27.3%	21	-46.2%
NETJETS	76	103	35.5%	858	951	10.8%	1,327	12.9%
SIERRA PACIFIC	2	1	-50.0%	5	8	60.0%	10	100.0%
SUNSET AVIATION	6	9	50.0%	22	39	77.3%	43	65.4%
SWIFT AIR	-	1	100.0%	20	11	-45.0%	18	-30.8%
XOJET	11	7	-36.4%	122	139	13.9%	209	23.7%
OTHER CHARTER	77	102	32.5%	650	806	24.0%	1,123	24.4%
SUBTOTAL CHARTER CARRIERS:	346	397	14.7%	2,827	3,403	20.4%	4,900	33.2%
CARGO CARRIERS								
ABX AIR (DHL)	-	-	0.0%	1	-	-100.0%	-	-100.0%
AERO CHARTER & TRANSPORT	21	23	9.5%	167	176	5.4%	261	3.6%
AIR TRANSPORT INTERNATIONAL	-	-	0.0%	-	6	100.0%	12	-73.9%
AMERIFLIGHT	317	279	-12.0%	2,683	2,105	-21.5%	3,336	-18.6%
CORPORATE AIR (BILLINGS)	114	118	3.5%	853	880	3.2%	1,324	2.6%
EMPIRE	18	19	5.6%	137	134	-2.2%	202	-1.9%
FEDERAL EXPRESS	147	131	-10.9%	1,120	1,074	-4.1%	1,670	-3.5%
SOUTHERN AIR	49	44	-10.2%	373	352	-5.6%	537	14.7%
UPS	93	129	38.7%	715	866	21.1%	1,326	12.3%
WESTERN AIR EXPRESS	57	18	-68.4%	257	259	0.8%	425	7.6%
OTHER CARGO	45	98	117.8%	189	728	285.2%	1,011	423.8%
SUBTOTAL CARGO CARRIERS:	861	859	-0.2%	6,495	6,580	1.3%	10,104	2.4%
TOTAL LANDINGS	11,793	12,103	2.6%	88,455	90,884	2.7%	134,172	3.6%
TOTAL LANDED WEIGHT								
SCHEDULED CARRIERS								
AEROMEXICO	-	-	0.0%	94,798	-	-100.0%	-	-100.0%
AIR CANADA	2,910,000	3,007,000	3.3%	9,312,000	17,848,000	91.7%	27,063,000	190.6%
ALASKA	34,652,500	29,852,700	-13.9%	214,043,300	239,909,400	12.1%	364,354,100	16.1%
Horizon Air / Alaska	5,742,750	2,037,750	-64.5%	45,015,750	28,068,780	-37.6%	43,506,280	-35.4%
Skywest / Alaska	7,898,506	8,919,883	12.9%	71,278,993	59,347,879	-16.7%	86,316,485	-17.6%
AMERICAN	59,536,700	58,076,000	-2.5%	456,265,634	464,796,000	1.9%	649,607,100	19.0%
Compass	6,595,600	2,623,250	-60.2%	45,494,650	34,701,850	-23.7%	52,465,000	7.0%
American Eagle/Republic	674,550	-	-100.0%	6,970,350	-	-100.0%	449,700	-97.2%
Envoy Air (American)	41,220	-	-100.0%	22,218,220	1,199,200	-94.6%	6,585,220	-75.3%
American/Mesa Air	-	-	0.0%	3,822,000	-	-100.0%	147,000	-96.7%

**SALT LAKE CITY INTERNATIONAL AIRPORT
LANDING ACTIVITY
EIGHT MONTHS ENDED AUGUST 2017**

	AUGUST 2016	AUGUST 2017	CHANGE	YTD 2016	YTD 2017	CHANGE	12 MO ROLLING Ending 08/2017	% CHANGE
SkyWest (American)	5,122,000	11,169,000	118.1%	29,442,000	75,731,000	157.2%	100,763,000	122.1%
DELTA	605,591,600	647,124,273	6.9%	4,330,285,960	4,680,494,842	8.1%	6,836,848,726	8.8%
SkyWest (Delta Connection)	216,275,000	209,511,988	-3.1%	1,663,535,600	1,553,205,896	-6.6%	2,375,771,868	-3.9%
Compass (Delta Connection)	17,375,146	12,855,267	-26.0%	115,762,216	49,825,816	-57.0%	73,614,596	-58.9%
FRONTIER	20,242,632	16,051,032	-20.7%	146,707,950	141,905,308	-3.3%	219,714,364	5.8%
JETBLUE	22,609,800	26,449,200	17.0%	172,345,256	233,492,026	35.5%	324,073,426	32.6%
KLM ROYAL DUTCH AIRLINES	5,213,000	5,532,150	6.1%	17,243,000	29,362,950	70.3%	39,788,950	130.8%
SOUTHWEST	112,456,000	130,590,000	16.1%	838,946,000	963,168,000	14.8%	1,390,970,000	11.7%
UNITED	15,986,300	26,834,800	67.9%	171,492,120	228,843,880	33.4%	316,294,280	24.1%
Express Jet	176,368	-	-100.0%	648,196	-	-100.0%	44,092	-94.4%
Mesa / United Express	150,000	-	-100.0%	2,100,000	7,425,000	253.6%	8,850,000	210.5%
Republic Airways Holdings	1,379,100	3,117,351	126.0%	5,635,452	36,858,736	554.1%	48,511,176	414.6%
SkyWest (United Express)	31,329,970	-	-100.0%	219,975,326	196,038,200	-10.9%	296,496,982	-6.0%
Shuttle America (United Express)	433,872	26,558,067	6021.2%	9,762,120	-	-100.0%	867,744	-94.3%
Trans States	176,400	-	-100.0%	3,033,387	220,500	-92.7%	793,800	-73.8%
US AIRWAYS	-	-	0.0%	-	-	0.0%	-	-100.0%
SkyWest (US Airways)	-	-	0.0%	-	-	0.0%	-	-100.0%
SUBTOTAL SCHEDULED CARRIERS:	1,172,569,014	1,220,309,711	4.1%	8,601,430,278	9,042,443,263	5.1%	13,263,896,889	5.8%
CHARTER CARRIERS								
ALLEGiant AIR	-	139,500	100.0%	418,500	558,000	33.3%	2,479,500	111.0%
BIGHORN AIRWAYS	-	-	0.0%	27,320	-	-100.0%	-	-100.0%
BOUTIQUE AIR	1,338,070	1,159,710	-13.3%	6,691,930	10,005,240	49.5%	15,401,870	130.2%
D&D AVIATION	204,100	-	-100.0%	824,950	-	-100.0%	15,700	-98.6%
DELTA PRIVATE JETS	277,000	458,500	65.5%	2,883,700	3,920,950	36.0%	5,656,115	49.5%
EXECUTIVE JET MANAGEMENT	133,050	414,065	211.2%	3,519,185	4,585,457	30.3%	5,975,757	28.6%
FLIGHT OPTIONS	147,925	304,050	105.5%	2,021,420	2,001,015	-1.0%	2,790,135	-8.8%
KEYLIME AIR	-	63,450	100.0%	348,967	253,794	-27.3%	666,206	-42.8%
NETJETS	2,048,570	2,994,429	46.2%	25,089,683	28,678,259	14.3%	39,357,037	16.7%
SIERRA PACIFIC	212,000	105,000	-50.5%	531,000	855,000	61.0%	1,067,000	100.9%
SUN COUNTRY	292,600	146,300	-50.0%	1,024,100	1,755,000	71.4%	2,339,900	99.9%
SWIFT AIR	-	121,000	100.0%	2,420,000	929,925	-61.6%	1,776,925	-42.0%
XOJET	359,550	224,550	-37.5%	3,947,250	4,543,050	15.1%	6,811,950	24.4%
OTHER CHARTER	2,221,919	3,180,494	43.1%	22,070,364	30,570,469	38.5%	46,334,496	44.6%
SUBTOTAL CHARTER CARRIERS:	7,234,784	9,311,048	28.7%	71,818,369	88,656,159	23.4%	130,672,591	33.8%
CARGO CARRIERS								
ABX AIR (DHL)	-	-	0.0%	320,000	-	-100.0%	-	-100.0%
AERO CHARTER & TRANSPORT	143,850	157,550	9.5%	1,143,950	1,208,670	5.7%	1,790,920	3.7%
AIR TRANSPORT INTERNATIONAL	-	-	0.0%	-	112,500	100.0%	223,500	-97.6%
ALPINE AVIATION	209,300	801,300	282.8%	209,300	6,469,600	2991.1%	8,256,700	3844.9%
AMERIFLIGHT	4,164,400	4,013,444	-3.6%	35,120,300	30,000,114	-14.6%	46,760,138	-13.0%
CORPORATE AIR (BILLINGS)	969,000	1,003,000	3.5%	7,250,500	7,480,000	3.2%	11,254,000	2.6%
EMPIRE	650,790	686,945	5.6%	4,889,500	4,932,074	0.9%	7,510,657	1.7%
FEDEX EXPRESS	48,069,600	46,852,000	-2.5%	367,085,000	363,248,600	-1.0%	562,774,300	-1.0%
SOUTHERN AIR INC	6,027,566	5,367,485	-11.0%	45,747,790	42,699,263	-6.7%	65,188,627	13.6%
UPS	29,122,960	36,809,040	26.4%	222,651,920	255,047,840	14.6%	397,962,160	8.5%
WESTERN AIR EXPRESS	730,000	252,000	-65.5%	3,326,200	3,251,300	-2.3%	5,374,700	6.7%
OTHER CARGO	522,335	1,713,594	228.1%	1,897,177	10,086,974	431.7%	12,132,104	508.6%
SUBTOTAL CARGO CARRIERS:	90,609,801	97,656,358	7.8%	689,641,637	724,536,935	5.1%	1,119,227,806	3.3%
TOTAL LANDINGS	1,270,413,599	1,327,277,117	4.5%	9,362,966,284	9,856,608,357	5.3%	14,514,903,286	5.8%

**SALT LAKE CITY INTERNATIONAL AIRPORT
CARGO ACTIVITY REPORT
EIGHT MONTHS ENDED AUGUST 2017**

	AUGUST 2016	AUGUST 2017	CHANGE	YTD 2016	YTD 2017	CHANGE	12 MO ROLLING Ending 08/2017	% CHANGE
ENPLANED CARGO								
PASSENGER CARRIERS								
ALASKA	11,491	21,243	84.87%	87,782	101,312	15.41%	142,549	13.07%
Horizon Air / Alaska	182	88	-51.65%	1,187	854	-28.05%	1,085	-25.38%
Skywest / Alaska	1,361	-	-100.00%	9,317	1,030	-88.94%	4,532	-66.26%
AMERICAN	33,518	24,615	-26.56%	296,934	137,986	-53.53%	268,389	-43.13%
American Eagle/Republic	-	-	0.00%	-	-	0.00%	273	-98.07%
Compass	-	-	0.00%	1	-	-100.00%	1	-99.95%
Envoy Air (American)	-	-	0.00%	478	-	-100.00%	406	-65.65%
Mesa	-	-	0.00%	8	-	-100.00%	-	-100.00%
SkyWest (American)	55	-	-100.00%	2,099	479	-77.18%	822	-90.86%
DELTA	624,918	1,098,193	75.73%	5,874,793	8,654,494	47.32%	12,023,719	30.48%
FRONTIER	-	-	0.00%	-	-	0.00%	-	0.00%
KLM ROYAL DUTCH	43,933	41,560	-5.40%	193,341	308,242	59.43%	461,168	138.53%
SOUTHWEST	325,222	382,907	17.74%	2,979,915	2,610,870	-12.38%	3,835,877	-17.79%
UNITED	8,374	4,965	-40.71%	55,535	36,499	-34.28%	90,503	3.35%
US AIRWAYS	-	-	0.00%	-	-	0.00%	-	-100.00%
Others	-	-	0.00%	20,200	-	-100.00%	-	-100.00%
CARGO CARRIERS								
ABX AIR (DHL)	-	-	0.00%	16,001	-	-100.00%	-	-100.00%
FEDEX EXPRESS*	7,469,217	7,585,895	1.56%	61,359,274	59,520,150	-3.00%	90,351,061	-4.84%
GEM AIR	27,877	39,468	41.58%	111,937	253,966	126.88%	375,965	235.87%
SOUTHERN AIR	419,201	435,558	3.90%	2,813,861	2,898,432	3.01%	4,418,665	27.49%
UPS	3,884,724	4,439,336	14.28%	28,703,071	30,281,189	5.50%	47,045,767	4.21%
MISC CARGO	269,003	1,039,028	286.25%	5,771,640	12,170,110	110.86%	15,463,636	49.94%
TOTAL ENPLANED CARGO	13,119,076	15,112,856	15.20%	108,297,374	116,975,613	8.01%	174,484,418	3.32%
DEPLANED CARGO								
PASSENGER CARRIERS								
ALASKA	31,825	33,446	5.09%	162,756	176,711	8.57%	267,631	14.90%
Horizon Air / Alaska	911	459	-49.62%	1,599	3,929	145.72%	6,146	124.88%
Skywest / Alaska	2,080	790	-62.02%	18,155	4,277	-76.44%	6,515	-75.37%
AMERICAN	34,914	47,634	36.43%	261,225	299,011	14.46%	434,283	22.60%
American Eagle/Republic	130	-	-100.00%	1,570	-	-100.00%	-	-100.00%
Compass	-	-	0.00%	694	6,437	827.52%	6,437	827.52%
Envoy Air (American)	-	-	0.00%	72	-	-100.00%	151	-39.36%
SkyWest (American)	203	201	-0.99%	1,810	5,563	207.35%	7,776	281.55%
DELTA	1,006,839	1,685,131	67.37%	8,798,776	11,471,075	30.37%	16,917,649	23.22%
KLM ROYAL DUTCH	80,799	162,687	101.35%	280,750	616,676	119.65%	827,414	194.72%
SOUTHWEST	421,840	409,546	-2.91%	3,315,833	3,097,700	-6.58%	4,546,802	-9.83%
UNITED	41,734	30,660	-26.53%	200,110	220,502	10.19%	339,150	13.46%
US AIRWAYS	-	-	0.00%	-	-	0.00%	-	-100.00%
Skywest (US Airways)	-	-	0.00%	-	-	0.00%	-	-100.00%
Others	-	-	0.00%	-	32,565	100.00%	44,176	100.00%
CARGO CARRIERS								
ABX AIR (DHL)	-	-	0.00%	1,069	-	-100.00%	-	-100.00%
FEDEX EXPRESS*	8,246,564	9,062,385	9.89%	60,970,839	65,222,754	6.97%	98,888,458	9.73%
GEM AIR	17,463	19,807	13.42%	107,162	136,330	27.22%	190,406	77.68%
SOUTHERN AIR	529,043	386,118	-27.02%	3,756,542	3,532,627	-5.96%	5,501,464	13.99%
UPS	5,493,999	6,436,398	17.15%	39,528,294	43,731,832	10.63%	66,485,419	8.55%
MISC CARGO	291,389	276,254	-5.19%	2,940,535	2,546,150	-13.41%	4,228,036	-26.32%
TOTAL DEPLANED CARGO	16,199,733	18,551,516	14.52%	120,347,791	131,104,139	8.94%	198,697,913	9.14%
TOTAL CARGO	29,318,809	33,664,372	14.82%	228,645,165	248,079,752	8.50%	373,182,331	6.34%

*FEDEX EXPRESS includes mail



Salt Lake City
Department of Airports

COMPARISON OF ON TIME OPERATIONS JULY 2017

ARRIVALS

Airport	Flights	% On Time	Rank
SLC SALT LAKE CITY INTL	10,001	86.3	1
MSP MINNEAPOLIS-ST. PAUL INTL	12,625	84.9	2
PDX PORTLAND INTL	6,043	83.2	3
SEA SEATTLE-TACOMA INTL	13,394	82.8	4
IAH HOUSTON GEORGE BUSH	11,507	82.2	5
DTW DETROIT METRO WAYNE CNTY	10,944	81.9	6
SAN SAN DIEGO LINDBERGH FIELD	7,874	81.0	7
DEN DENVER INTL	20,655	80.8	8
PHX PHOENIX SKY HARBOR INTL	13,265	80.5	9
LAX LOS ANGELES INTL	19,167	80.1	10
ATL HARTSFIELD-JACKSON ATLANTA INTL	32,189	80.0	11
LAS LAS VEGAS MCCARRAN INTL	13,229	78.3	12
DFW DALLAS-FT. WORTH REGIONAL	16,062	77.7	13
CVG CINCINNATI NORTHERN INT. KY	1,996	77.3	14
IAD WASHINGTON DULLES	3,552	77.3	15
CLT CHARLOTTE DOUGLAS	9,706	76.7	16
MDW CHICAGO MIDWAY	8,085	76.6	17
SFO SAN FRANCISCO INTL	15,785	76.3	18
STL ST. LOUIS LAMBERT INTL	4,938	75.6	19
BWI BALTIMORE/WASHINGTON INTL	9,260	75.5	20
TPA TAMPA INTL	5,927	74.9	21
MIA MIAMI INTL	5,847	72.6	22
MCO ORLANDO INTL	11,847	72.2	23
ORD CHICAGO O HARE	25,608	71.6	24
DCA RONALD REAGAN NATIONAL	6,348	71.3	25
FLL FT. LAUDERDALE	7,710	70.6	26
PHL PHILADELPHIA INTL	6,504	70.6	27
BOS BOSTON LOGAN INTL	11,130	69.3	28
JFK NEW YORK JFK INTL	8,464	66.2	29
EWR NEWARK LIBERTY INTERNATIONAL	9,988	63.5	30
LGA NEW YORK LAGUARDIA	7,858	62.6	31
AVERAGES	11,210	76.1	

DEPARTURES

Airport	Flights	% On Time	Rank
PDX PORTLAND INTERNATIONAL	6,042	86.5	1
SEA SEATTLE-TACOMA INTL	13,390	85.5	2
SLC SALT LAKE CITY INTL	10,003	85.4	3
MSP MINNEAPOLIS-ST. PAUL INTL	12,624	85.3	4
SAN SAN DIEGO LINDBERGH FIELD	7,877	82.4	5
DTW DETROIT METRO WAYNE CNTY	10,942	81.4	6
PHX PHOENIX SKY HARBOR INTL	13,264	79.6	7
IAH HOUSTON GEORGE BUSH	11,507	79.3	8
LAX LOS ANGELES INTL	19,173	79.1	9
SFO SAN FRANCISCO INTL	15,789	77.9	10
DEN DENVER INTERNATIONAL	20,643	77.8	11
IAD WASHINGTON DULLES	3,552	77.5	12
CVG CINCINNATI NORTHERN INT. KY	1,996	77.3	13
DCA RONALD REAGAN NATIONAL	6,347	75.9	14
TPA TAMPA INTERNATIONAL	5,926	75.3	15
ATL HARTSFIELD-JACKSON ATLANTA INTL	32,186	75.1	16
STL ST. LOUIS LAMBERT INTL	4,941	74.5	17
DFW DALLAS-FT. WORTH REGIONAL	16,092	74.2	18
LAS LAS VEGAS MCCARRAN INTL	13,225	73.8	19
PHL PHILADELPHIA INTL	6,502	73.0	20
CLT CHARLOTTE DOUGLAS	9,727	72.6	21
BOS BOSTON LOGAN INTERNATIONAL	11,125	72.3	22
BWI BALTIMORE/WASHINGTON INTL	9,260	72.2	23
ORD CHICAGO O HARE	25,594	70.2	24
EWR NEWARK LIBERTY INTERNATIONAL	9,992	69.9	25
JFK NEW YORK JFK INTL	8,467	69.8	26
MCO ORLANDO INTL	11,843	69.5	27
LGA NEW YORK LAGUARDIA	7,860	69.4	28
MDW CHICAGO MIDWAY	8,085	68.8	29
MIA MIAMI INTL	5,847	68.7	30
FLL FT. LAUDERDALE	7,708	68.2	31
AVERAGES	11,211	75.8	

ON TIME ARRIVAL PERFORMANCE AT SLC

By Carrier

Air Carrier	Flights	% On Time
AS ALASKA	208	83.7%
AA AMERICAN	406	68.7%
DL DELTA	4,045	90.0%
F9 FRONTIER	109	74.3%
B6 JETBLUE	186	63.4%
OO SKYWEST	3,852	88.9%
WN SOUTHWEST	993	76.2%
UA UNITED	202	75.2%
	10,001	86.3%

Source: DOT Air Travel Consumer Report - Issued September 14, 2017

DESIGN AND CONSTRUCTION REPORT

TABLE OF CONTENTS

- I. Area Map of Project Locations
- II. Project Schedule
- III. Construction Analysis
- IV. Design and Construction Report

SALT LAKE CITY DEPARTMENT OF AIRPORTS
October 10, 2017



Salt Lake City
International Airport

2017 - 2018 Project Legend

Airfield

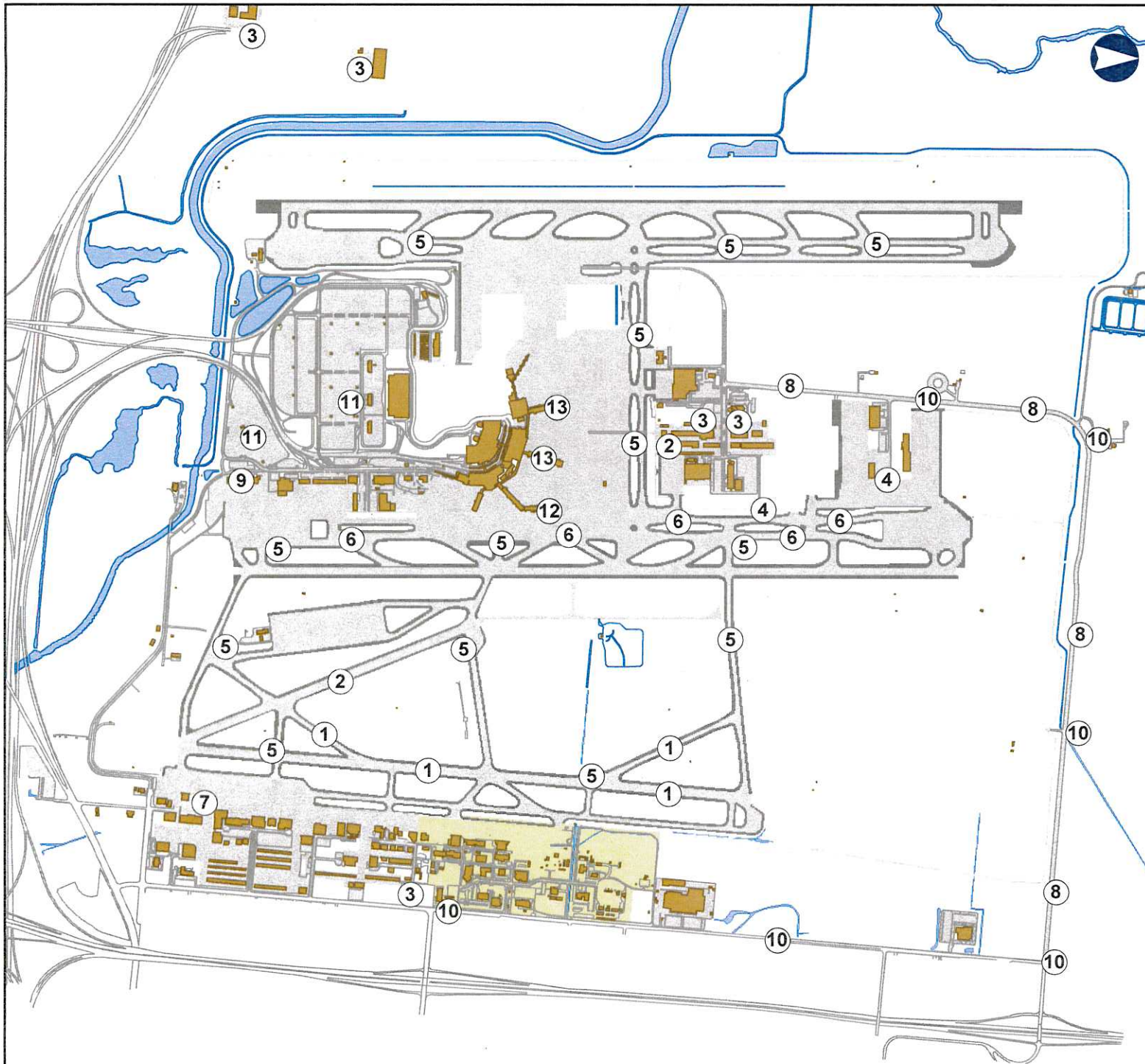
1. R/W 17-35 and T/W P & R
Pavement Rehabilitation
2. R/W 14-32 Pavement Rehabilitation
3. Asphalt Overlay Program Phase 11
4. North Support Improvements/
Vehicle Gate 22
5. Airfield Signage Replacement
6. PCC Joint Seal Phase 2

Landside

7. East Apron Pavement Rehabilitation Phase 1
8. 2100 North 4000 West Asphalt Overlay
9. Airport Operations Center
10. Fiber Run 2200 W and 2200 N
to North Vault
11. Electric Vehicle Charging Stations

Terminal

12. Roof Replacements, Lower Concourse B
13. Passenger Boarding Bridge Replacement
(C2,D5 and D7)



**SALT LAKE CITY INTERNATIONAL AIRPORT
CONSTRUCTION PROGRAM
2016/2017 Construction Schedule**

ID	Task Name	Start	Finish	Jun '17	Jul '17	Aug '17	Sep '17	Oct '17	Nov '17	Dec '17	Jan '18	Feb '18	Mar '18	Apr '18
1	Airfield	Mon 8/1/16	Thu 9/13/18											
2	(1) R/W 17-35 & T/W's P & R Pavement Rehabilitation	Mon 8/1/16	Mon 7/31/17											
3	(2) R/W 14-32 Pavement Rehabilitation	Mon 7/10/17	Tue 10/31/17											
4	(3) Asphalt Overlay Program Phase 11	Wed 7/5/17	Fri 10/13/17											
5	(4) North Support Improvements/Vehicle Gate 22	Mon 8/7/17	Mon 10/9/17											
6	(5) Airfield Signage Replacement	Tue 8/1/17	Thu 9/13/18											
7	(6) PCC Joint Seal Program Phase 2	Tue 9/26/17	Fri 11/17/17											
8	Landside	Wed 6/1/16	Tue 7/24/18											
9	(7) East Apron Pavement Rehabilitation Phase 1	Mon 9/11/17	Fri 11/24/17											
10	(8) 2100 North 4000 West Asphalt Overlay	Mon 5/15/17	Fri 10/6/17											
11	(9) Airport Operations Center	Wed 6/1/16	Fri 10/20/17											
12	(10) Fiber Run 2200 West and 2200 North to North Vault	Mon 8/14/17	Tue 7/24/18											
13	(11) Electric Vehicle Charging Stations	Fri 9/22/17	Sat 2/10/18											
14	Terninal	Thu 6/8/17	Mon 11/27/17											
15	(12) Lower Concourse B Roof Replacement	Mon 6/26/17	Fri 10/13/17											
16	(13) Passenger Boarding Bridge Replacement (C2, D5, and D7)	Thu 6/8/17	Mon 11/27/17											

Date: Mon 10/9/17

Design
Construction

DESIGN

CONSTRUCTION

SCOPING

SUMMARY

Inactive Task



Inactive Milestone

Inactive Summary

Manual Task

Duration-only

Manual Summary Rollup



Manual Summary

Start-only

Finish-only

Deadline



**SALT LAKE CITY DEPARTMENT OF AIRPORTS
CONSTRUCTION PROJECT STATUS 2017 - 2018**

#	PROJECT NAME	ENGINEER'S ESTIMATE	BID AMOUNT	APPROVED CHANGE ORDERS TO DATE	% OF COST INCREASE TO DATE	STATUS	CONTRACTOR
CONSTRUCTION							
1	R/W 17-35 & T/W's P & R Pavement Rehabilitation	\$ 11,525,000	\$ 9,871,843	\$ 121,656	1.23%	on schedule	Staker Parson Companies
2	Runway 14-32 Pavement Rehabilitation	\$ 3,696,205	\$ 3,852,800			on schedule	Granite Construction Company
3	Asphalt Overlay Program Phase 11	\$ 643,646	\$ 615,296			on schedule	Staker Parson Companies
4	North Support Improvements/Vehicle Gate 22	\$ 618,159	\$ 749,950			on schedule	Staker Parson Companies
5	Airfield Signage Replacement	\$ 3,916,511	\$ 1,844,679			on schedule	Skyline Electric Company
6	PCC Joint Seal Program Phase 2 (T/W's G & H)	\$ 399,825	\$ 427,660			on schedule	Granite Construcion
7	East Apron Pavement Rehabilitation - Phase 1	\$ 2,935,225	\$ 2,966,485	\$ 987	0.03%	on schedule	Granite Construction Company
8	2100 North & 4000 West Asphalt Overlay	\$ 2,130,518	\$ 1,654,941			on schedule	Staker Parson Companies
9	Airport Operations Center	\$ 15,000,000	\$ 16,515,000	\$ 830,098	5.03%	on schedule	Big D Construcion
10	Fiber Run 2200 West and 2200 North to North Vault	\$ 1,960,273	\$ 1,797,585			on schedule	Americom Technology, Inc.
11	Electric Vehicle Charging Stations	\$ 275,220	\$ 305,913			on schedule	Paulsen Constrution
12	Lower Concourse B Roof Replacement	\$ 264,000	\$ 269,847			on schedule	Conwest Inc.
13	Passenger Boarding Bridge Replacement (C2, D5, and D7)	\$ 2,553,000	\$ 2,041,468			on schedule	JBT AeroTech
	Sub Total	\$ 45,917,582	\$ 42,913,467	\$ 952,741	2.22%		
Budget amount, Engineer's estimate, and Bid amount is based on construction cost only.							

DESIGN AND CONSTRUCTION REPORT

CONSTRUCTION

- (1) **Runway 17-35 and Taxiways P & R Pavement Rehabilitation** - This project is nearing completion. The Contractor is currently working on punch list items.
- (2) **Runway 14-32 Pavement Rehabilitation** - All asphalt paving work for this project has been completed. Remaining work includes final application of paint on all runway and taxiway surface painted markings and installation of in-pavement lights.
- (3) **Asphalt Overlay Program Phase 11** - The Contractor is nearing completion for this project. A final walk-thru will take place on October 12, 2017 to determine if there are any punch list items.
- (4) **North Support Improvements/Vehicle Gate 22** - Phase 1A and 1B, UPS dock reconstruction work is now complete. The Contractor is currently working on Phase 2, new Gate 25 construction. The Contractor has also started working on the new ingress roadway at Gate 22. Anticipated substantial completion for this project is October 31, 2017.
- (5) **Airfield Signage Replacement** - The Contractor is preparing submittals for review by SLCDA Engineering. Sign installation is anticipated to begin the week of October 30, 2017.
- (6) **PCC Joint Seal Program Phase 2 (T/W G & H)** - The Contractor, Granite Construction was issued a notice to proceed on September 25, 2017. Joint seal work on Taxiway G has started and is anticipated to be completed the week of October 23, 2017. The Contractor will then begin work on Taxiway H.
- (7) **East Apron Pavement Rehabilitation Phase 1** - The Contractor has completed seven of the eleven phases for this project. Paving work is anticipated to be completed the week of October 16, 2017 with utility and painting work to follow.
- (8) **2100 North 4000 West Asphalt Overlay** - Paving has been completed. The Contractor is working on final safety upgrades of barrier and crash attenuators for this project.
- (9) **Airport Operations Center** - The Contractor has completed the painting, ceiling installation and floor finishes. Mechanical and electrical equipment testing and commissioning is progressing. Communications cabling work is complete and racking and stacking of server equipment is underway. All remaining finish work within the building is nearing completion and only minor touch-up remains. Furniture installation is ongoing throughout the building. Final equipment installation such as TV monitors, computers and servers are being installed.
- (10) **Fiber Run 2200 West and 2200 North to North Vault** - The Contractor continues working on Phase 1 of the project installing communication and electrical ductbank north of 2100 North. Direct boring of the new duct bank under the canal along with FAA approach lighting work has begun.
- (11) **Electric Vehicle Charging Stations** - The Contractor, Paulsen Construction was issued a notice to proceed on September 22, 2017. Submittals are currently being prepared for review by SLCDA.
- (12) **Lower Concourse B Roof Replacement** - The Contractor has completed approximately 95% of the roofing work for this project. Anticipated substantial completion for this project is October 13, 2017.
- (13) **Passenger Boarding Bridge Replacement (C2, D5, and D7)** - The first bridge work will begin on Gate D7 on October 10, 2017 with the bridge delivery date of October 13, 2017.



**October 2017
Media Clippings**

Advisory Board Meeting

<https://slairport.com/assets/pdfDocuments/AABoard/MediaPacketOct2017.pdf>

Compiled by P.R. & Marketing Dept.