



Advisory Board  
Meeting

January 18, 2023

Agenda



## Advisory Board Meeting

January 18, 2023

Pursuant to City Code 2.14.060(A) and Utah Code section 52-4-207(2), the Airport Advisory Board adopted a rule permitting electronic meetings for this Board, regardless of whether a quorum is present at an anchor location, so long as such meetings comply with the Open and Public Meetings Act.

To access the meeting please visit:

<https://saltlakecity.webex.com/saltlakecity/onstage/g.php?MTID=e05ac29f9e201e3a400f6af68cbc014bc>



## ADVISORY BOARD MEETING AGENDA

18 January 2023

9:00 A.M.

### CONSENT

- A. Minutes of the 07 December 2022 Meeting

### DISCUSSION

- A. Director's Report – Bill Wyatt, Executive Director, SLCDCA
- B. Airport Redevelopment Program (ARP) Update – Brian Stetson, Deputy Program Director, SLCDCA
- C. Snow Removal Operations - Eddie Clayson, Director of Airport Maintenance
- D. Election of Board Chair and Vice Chair

### MEDIA CLIPPINGS

Media Clippings – December 2022

### INFORMATION ITEMS

Financial Report- November 2022  
Air Traffic Statistics –November 2022  
Construction Report –January 2022

The next meeting will be held on **Wednesday, February 15, 2023**, at 9:00 a.m. Meetings are usually held in the Board Room, located on the third level of the airport terminal and via Web-ex unless otherwise posted. People with disabilities may make requests for reasonable accommodations no later than 48 hours in advance in order to attend this Airport Advisory Board Meeting. Accommodations may include alternate formats, interpreters, and other auxiliary aids. This is an accessible facility. For questions or additional information, please contact Brett Christensen at 801-575-2042.



Advisory Board  
Meeting

January 18, 2023

Minutes

# **SALT LAKE CITY DEPARTMENT OF AIRPORTS MINUTES OF ADVISORY BOARD MEETING**

December 07, 2022

Members Present: Steve Price, Chair  
Theresa Foxley  
John Bradshaw\*  
Arlyn Bradshaw  
Cyndy Miller  
Jess Bird  
Roger Boyer  
Karen Mayne\*

Department of Airports: Bill Wyatt, Executive Director  
Brett Christensen, Executive Assistant  
Treber Andersen, Director of Operations  
Eddie Clayson, Director of Maintenance  
Medardo Gomez, ORAT Director  
Brady Fredrickson, Director of Planning and Environmental  
Pete Higgins, Chief Operations Officer  
Nancy Volmer, Communication and Marketing Director  
Melyssa Trnavskis, Director of Design and Construction Mgmt.  
Ed Cherry, Director of IT\*  
Shane Andreasen, Director of Admin. and Commercial Services  
Kristen Elder, Management Analyst  
Brady George, Battalion Chief\*  
Mike Williams, ARP Program Director

Other: Sam Owen, Salt Lake City\*  
Louis Miller, Visitor

Theresa Foxley called the meeting, held in person at the SLCDA Admin Offices Board Room and via Webex, to order at 9:03 a.m. (\* indicates the party attended virtually)

## **AGENDA**

### **A. Minutes**

A motion was made by Theresa Foxley and seconded by Cyndy Miller to approve the minutes of October 19, 2022, as presented. All votes were affirmative; the motion passed.

Bill presented Cynthia Miller with a runway light for her past service as Board Chair.

Steve Price joined the meeting at 9:05 a.m.

## **B. Director's Report**

Bill Wyatt, Executive Director, gave an update to the Airport Advisory Board regarding current events. Bill also spoke on the updated AUA which Delta is taking to their board for approval this month. An update was also given on Yellow Cab., as of December 1<sup>st</sup>, they are exclusively providing service to the SLC Airport.

## **C. Airport Redevelopment Program (ARP) Update – Mike Williams ARP Program Director, SLCDA**

Mike Williams, ARP Program Director, presented an update on the ARP (presentation on file). Main points included were:

- Safety and Schedule Stats, and Cost Summary
- Near Term Schedule Milestones
- ARP Overall Budget
- Concourse 'A' East/Central Tunnel/Airfield
- Concourse 'B' East
- Overall Phase 2 and Phase 3 Phased Delivery
- Phase 4- Gate Delivery Schedule

## **D. Air Service Development Update- Nate Lavin, Air Service Development Manager, SLCDA**

Nate Lavin, Air Service Development Manager presented an update on the Air Service Development. Main points included were:

- Aviation Industry Headwinds
  - Rising Jet Fuel Costs
  - Staff Shortages
  - Eurowings Discover Will Be Back Next Year with Service to Frankfurt
- Ongoing Strategic Initiatives
  - Expand Global Reach to New International Destinations
  - Increase Presence of Low-Cost Carriers
- In 2022 SLC Welcomed Three New Carriers to The Market
  - Eurowings discover
  - Spirit
  - Air Canada

Theresa Foxley asked about narrow-body aircraft and where addition planes were coming from. Bill explained that primary manufacturers are Boeing and Airbus and the production of aircraft has been slowed down because of global supply chain issues.

### **E. Rule Adoption**

Price explained that during a recent legislative session, a change was made to the Open and Public Meetings Act which requires boards to adopt a rule for determining a quorum at electronic meetings. The proposed rule reads as follows:

“Pursuant to City Code 2.14.060(A) and Utah Code section 52-4-207(2), the Salt Lake City Airport Advisory Board hereby adopts a rule determining a quorum to include all members present. A board member is considered ‘present’ when they are either physically present at the place identified as the Airport Advisory Board’s anchor location or are otherwise connected to the meeting via electronic means and make their presence known. Any member present, physically or by electronic means, may vote on any matters before the Board.”

By adopting this proposed rule, Airport board members attending meetings virtually will continue to be able to vote. Arlyn Bradshaw motioned to adopt the new rule, Miller seconded. All votes were affirmative; the motion passed.

### **F. Nominations of Board Chair and Vice-Chair**

Price opened the floor for nominations for Chair. Miller nominated Foxley for Airport Advisory Board Chair in 2023. A motion was made by Price and seconded by Roger Boyer that nominations for Board Chair be closed. All votes were affirmative; the motion passed.

Price opened the floor for nominations for Vice-Chair. Boyer nominated John Bradshaw as Airport Advisory Board Vice-Chair for 2023. A motion was made by Price and seconded by Miller that nominations for Board Vice-Chair be closed. All votes were affirmative; the motion passed.

Foxley gave thanks for the opportunity to serve the Board. Wyatt recognized Price with a runway light for his service as the Board Chair.

Price adjourned the meeting at 9:54 a.m.

\_\_\_\_\_  
Steve Price, Chair

\_\_\_\_\_  
Date

\_\_\_\_\_  
Erin Mendenhall, Mayor

\_\_\_\_\_  
Date



Advisory Board  
Meeting

January 18, 2023

Discussion Items



**AGENDA:** DISCUSSION ITEM (A)  
**DATE:** 18 January 2023  
**TO:** Airport Advisory Board  
**FROM:** Bill Wyatt, Executive Director  
**SUBJECT:** Executive Director's Report

---

---

Bill Wyatt, Executive Director, will present a monthly informational report to the Board, which may include:

1. ARP progress
2. Ground transportation update
3. Concessions and rental cars
4. Airport safety and security
5. Airport facilities and operations
6. General aviation
7. Passenger and airport users
8. Environmental matters
9. Financial condition
10. Legislative issues
11. Airlines
12. Communications and marketing

**AGENDA:** DISCUSSION ITEM (B)  
**DATE:** 18 January 2023  
**TO:** Airport Advisory Board  
**FROM:** Bill Wyatt, Executive Director  
**SUBJECT:** Airport Redevelopment Program Update

---

Brian Stetson, Airport Redevelopment Program (ARP) Deputy Program Director, will present an update on the SLC Airport Redevelopment Program (presentation on file).



# AIRPORT REDEVELOPMENT PROGRAM

Status Update 01/18/2023



# Safety, Statistics and Schedule



## Safety Statistics

### Numbers for October

- **OSHA National Average**
  - **Lost Time Rate 1.60    Recordable Rate 2.50**
- **HDJV Metrics**
  - **9,960,996 Total Trade Hours worked**
  - **Lost Time Rate 0.24    Recordable Rate 2.30**

### Trade Hours for the Program Overall

- **ARP Metrics (HDJV+AOJV)**
  - **12,122,611 Total Trade Hours worked**

### Trade Workers on Site

- **692 Trade Workers (week ending 01/06/2023)**

### Schedule Status - Critical Path

- **SCE – Completion of Carpet, Millwork and Final Finishes in Level 2 Areas A - C**
- **SCE – Completion of Cabling to Communication Rooms and Activation of Special Systems in Support of Early Gates**
- **SCE – Start-up and Commissioning of Passenger Boarding Bridges and Gate Systems for 5-Gate Turnover**
- **NCP Phase 3 – Start of Area G/Delta Sky Club Expansion Structural Steel Erection and Decking Placement**
- **Overall Program is on schedule**

# Near Term Schedule Milestones



Target Date	Current Date	Description
12/20/22	Complete	Concourse A East - Start Wayfinding Signage Installation
01/16/23	01/16/23	SCE - Complete Wayfinding Signage Level 2 Area C
01/20/23	01/20/23	Airfield - Complete Light Duty Paving Area D - E South
01/23/23	01/23/23	SCE - Complete Carpet Level 2 Area C
01/23/23	01/23/23	Central Tunnel - Start Terrazzo Area D
02/06/23	02/06/23	SCE - Complete Millwork/Terminations/Connections Level 2 Area C
02/14/23	01/14/23	NCP Phase 3 - Complete Slab-on-Grade Area G Around Tunnel
02/20/23	02/20/23	NCP Phase 3 - Start Rough Steel Erection Area G North
02/23/23	02/23/23	NCP Phase 3 - Start Curtainwall Area H

# Airport Redevelopment Program Overall Budget



Construction Budget December 2022	Budget 12/22/22 FOC	Committed Nov-22	Commitments Dec-22	Revised Commitments	Earned to Date	Estimate at Completion
Closed TRP CGMPs 1, 2, 2A-2D, 3-7, 9, 09A, 12	\$1,933,090,276	\$1,933,090,276	\$0	\$1,933,090,276	\$1,933,090,276	\$1,933,090,276
Closed NCP CGMPs 13, 14, 15, 16, 17, 18 & 19	\$487,852,444	\$487,852,444	\$0	\$487,852,444	\$487,852,444	\$487,852,444
CGMP 2E & F CMAR General Conditions/Services	\$99,720,169	\$99,720,169	\$0	\$99,720,169	\$41,311,616	\$99,720,169
CGMP 2G CMAR Preconstruction Phase 4	\$46,780,829	\$46,780,828	\$0	\$46,780,828	\$1,790,408	\$46,780,829
CGMP 10 South Concourse East/Tunnel Shell	\$559,228,026	\$554,410,047	\$0	\$554,410,047	\$423,982,451	\$559,228,026
CGMP 11, 11A & 11B Apron Paving & Fueling	\$274,269,021	\$203,341,893	\$70,927,128	\$274,269,021	\$160,546,961	\$274,269,021
CGMP 19A Phase 3 NCP/Tunnel Buildout	\$370,537,208	\$348,527,387	\$0	\$348,527,387	\$84,513,869	\$370,537,208
CGMP 20 NCP Phase 2 Airfield Paving & Jet Fuel	\$78,108,685	\$77,645,774	\$0	\$77,645,774	\$8,463,418	\$78,108,685
CGMP 22 & 22F Phase 4 Concourse	\$498,523,113	\$0	\$91,381,793	\$91,381,793		\$498,523,113
CGMP 24 Phase 4 Airfield	\$62,627,532	\$0	\$62,627,532	\$62,627,532		\$62,627,532
<b>Total Program Construction</b>	<b>\$4,410,737,303</b>	<b>\$3,751,368,818</b>	<b>\$224,936,453</b>	<b>\$3,976,305,271</b>	<b>\$3,141,551,443</b>	<b>\$4,410,737,303</b>
TRP Owner Procurement	\$5,472,527	\$5,472,527	\$0	\$5,472,527	\$4,808,421	\$5,472,527
NCP Owner Procurement	\$3,039,266	\$3,039,266	\$0	\$3,039,266	\$1,860,182	\$3,039,266
Security Checkpoint Equipment	\$12,751,472	\$11,751,472	\$0	\$11,751,472	\$7,848,061	\$12,751,472
Automated Security Exit Door Equipment	\$917,430	\$917,430	\$0	\$917,430	\$634,130	\$917,430
TRP Soft Cost	\$385,920,050	\$336,164,088	\$388,838	\$336,552,926	\$307,436,092	\$385,920,050
NCP Soft Cost	\$185,593,794	\$139,667,878	\$144,796	\$139,812,674	\$116,092,693	\$185,593,794
NCP Soft Cost Phase 4	\$67,295,769	\$17,792,076	\$0	\$17,792,076	\$14,562,648	\$67,295,769
<b>Total Program Soft Cost</b>	<b>\$660,990,308</b>	<b>\$514,804,737</b>	<b>\$533,634</b>	<b>\$515,338,371</b>	<b>\$453,242,227</b>	<b>\$660,990,308</b>
TRP Owner Reserve	\$16,487,944	\$0	\$0	\$0	\$0	\$16,487,944
NCP Owner Reserve	\$46,757,507	\$0	\$0	\$0	\$0	\$46,757,507
<b>Total Program Owner Reserve</b>	<b>\$63,245,451</b>	<b>\$0</b>	<b>\$0</b>	<b>\$0</b>	<b>\$0</b>	<b>\$63,245,451</b>
<b>Total ARP Program Budget</b>	<b>\$5,134,973,062</b>	<b>\$4,266,173,555</b>	<b>\$225,470,087</b>	<b>\$4,491,643,642</b>	<b>\$3,594,793,670</b>	<b>\$5,134,973,062</b>

# Airport Redevelopment Program Trade Contractor Award Statistics



## Contract Local/Non-Local Awarded Statistics

Local Trades	Dollar Value	Trade Count	Percentage
Total Local (Wasatch Front) Contractors	\$1,680,638,753	151	67.92%
Total Out of State Contractors	\$793,922,787	38	32.08%
<b>Total Contract Awards</b>	<b>\$2,474,561,540</b>	<b>189</b>	<b>100.00%</b>

## Contract Union/Merit Shop Awarded Statistics

Union Trades	Dollar Value	Trade Count	Percentage
Total Union Contractors	\$863,232,250	43	34.88%
Total Merit Shop Contractors	\$1,611,329,290	146	65.12%
<b>Total Contract Awards</b>	<b>\$2,474,561,540</b>	<b>189</b>	<b>100.00%</b>

# Concourse 'A' East/ Central Tunnel/Airfield



## Central Tunnel

- **Moving Walkway Installation Progressing**
- **Mechanical, Electrical and Plumbing Installation Progressing**
- **Fire Protection Installation Progressing**
- **Wall and Soffit Studs and Drywall Underway**
- **Passenger Cell Area Wall and Soffit Painting Underway**
- **Passenger Cell Area Ceiling Installation Underway**

## Concourse 'A' East

- **BHS Early Bag Storage Conveyor Installation Progressing**
- **IT/Special Systems Cabinet/Cabling Installation Progressing**
- **Ceiling Grid and Column Cover Installation Continuing**
- **Terrazzo Installation in Main Circulation Areas Progressing**
- **Terrazzo Polishing underway**
- **Restroom Fixture, Millwork, Toilet Partitions and Mirror Installation Progressing**
- **Holdroom Carpet Installation Progressing**
- **Holdroom Gate Signage Installation Progressing**
- **Passenger Boarding Bridge Installation Progressing**



# Concourse 'A' East/ Central Tunnel/Airfield



## **Airfield**

- **Site Utilities Progressing**
- **Hydrant Fuel System Emergency Fuel Shut Off System(EFSO) Installation Progressing**
- **Airfield Paving South and North Sides of Concourse 'A' Progressing to Support Passenger Boarding Bridge Installation**

## Concourse 'B' East - 8 Gates (Phase 3)



### **Concourse 'B' East 8 Gates (Phase 3)**

- **Foundation Formwork and Concrete Placement Progressing**
- **Building Shallow Underground MEP Progressing**
- **Structural Steel Erection Progressing**
- **Elevated Metal Deck Installation Progressing**
- **Slab-on-Metal Deck Concrete Placement Progressing**
- **Exterior Stud and Sheathing Installation Progressing**
- **Mechanical, Electrical, Plumbing and Special Systems Rough-in Underway**

## Concourse 'B' East – 16 Gates (Phase 4)



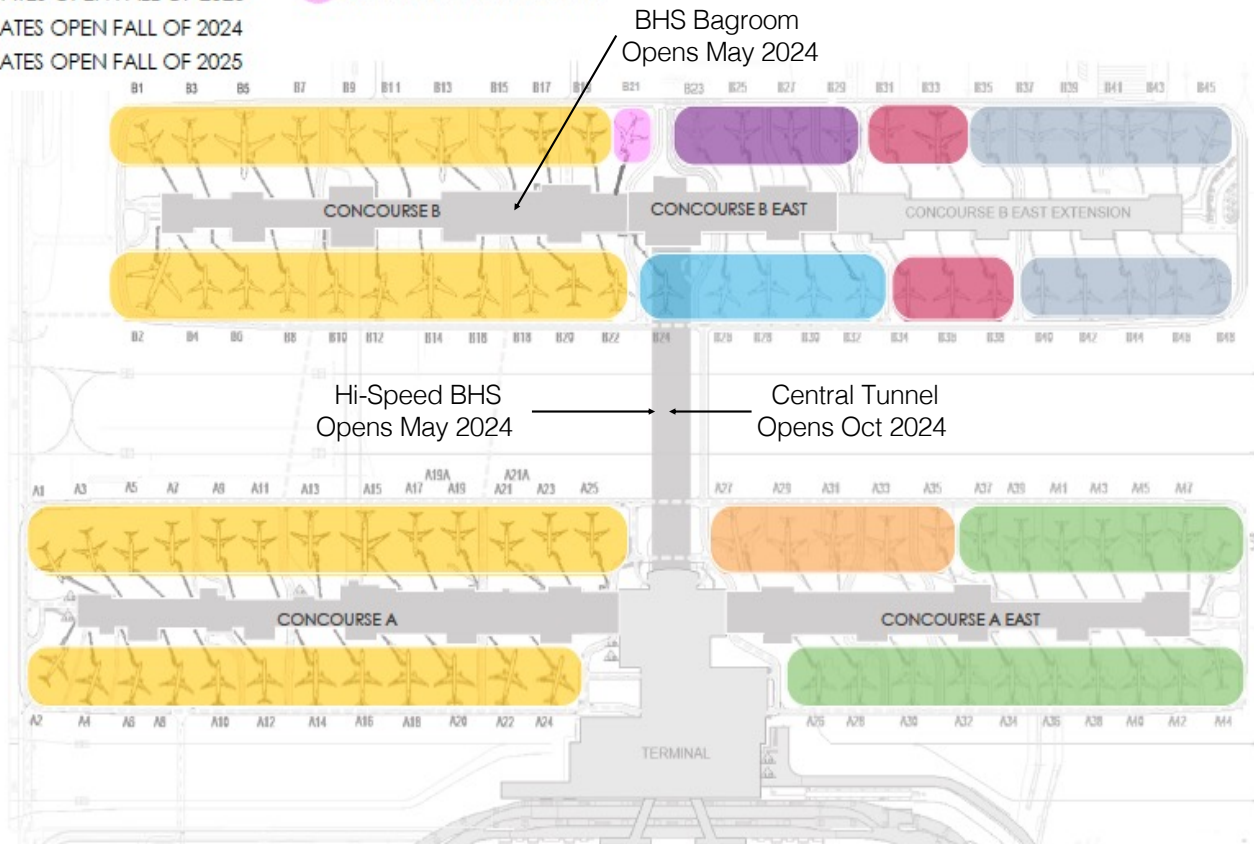
### **Concourse 'B' East 16 Gates (Phase 4)**

- Completed Early Trade Procurement – Executed CGMPs**
  - CGMP 11B – Airfield Paving East Side of Airport**
  - CGMP 24 – Airfield Paving and Hydrant Fueling at Phase 4**
  - CGMP 22 – Baggage System, Passenger Boarding Bridges, Conveying**
  - CGMP 22F (Federal Funding) – Stone Columns and Deep Foundations**

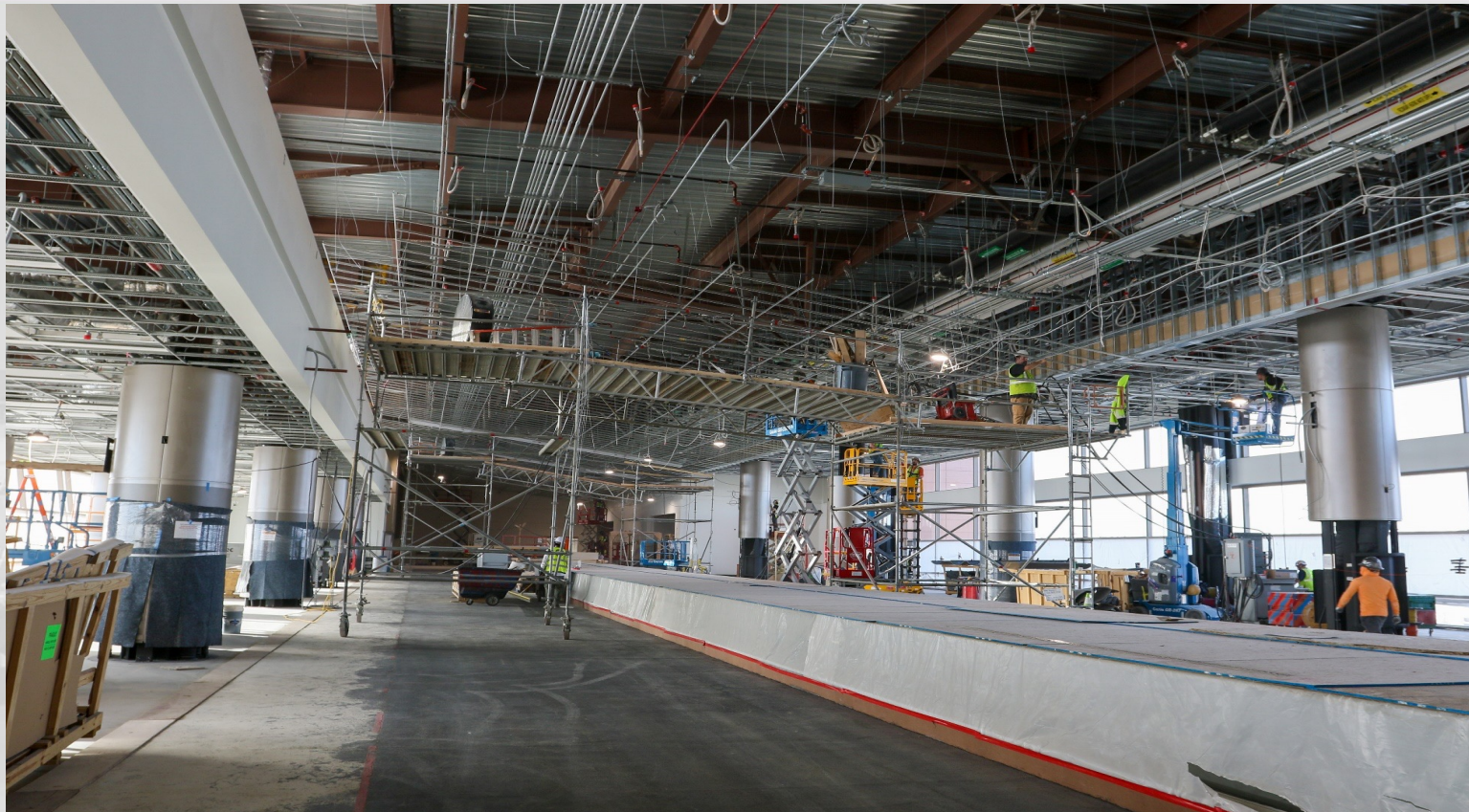
# Overall Phase 2, Phase 3 and Phase 4 Phased Delivery



- 46 CURRENT GATES OPEN
- 04 GATES OPEN SPRING OF 2023
- 18 GATES OPEN FALL OF 2023
- 05 GATES OPEN FALL OF 2024
- 04 GATES OPEN FALL OF 2025
- 05 GATES OPEN JAN OF 2026
- 11 GATES OPEN JAN OF 2027
- 01 GATE OPENS NOV OF 2027



# Concourse A East - Interior



Ceiling Grid Area D & E – East of Separation Wall

# Concourse A East – Interior



**Loading Dock Corridor Epoxy Paint**



**Overhead Sign Supports Area B**

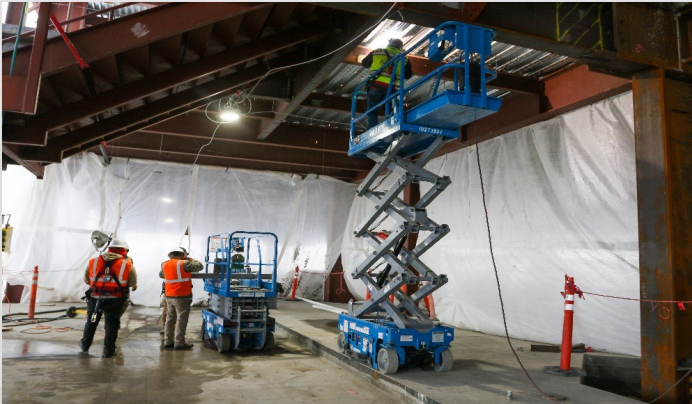


**Delta Millwork Gate A28**



**Gate A33 Vestibule – 5<sup>th</sup> Early Gate**

# Concourse B East



**Level 1 Area J Detail Welding**



**Level 2 Area J Framing**



**Area G Shallow Foundations**



**Area G East Shallow Fdns - Weather Protection**

# Central Tunnel – Interior Progress



**Passenger Cell Area C Framing & Drywall**



**Passenger Cell Area G Overhead MEP**



**Comm Room Area D**



**Passenger Cell Blue Painting for Artwork**



# 2022 in Review – Airfield Milestones



**Taxiway Y Opens 4/13/2022**



**Taxilane 2E Status as of 4/27/2022**



**Backfill/Grading over Central Tunnel 04/2022**



**Taxilane 2E Opens 11/18/2022**

# 2022 in Review – Concourse A East



**Level 2 Area B Looking West 04/2022**



**Level 2 Area B Looking West 12/2022**



**Concourse A East 01/27/2022**



**Concourse A East 12/19/2022**

# 2022 in Review – Concourse B East



**Site Grading Begins 03/2022**



**Concourse B East Footprint 01/27/2022**



**Steel Erection Day One 09/07/2022**



**Concourse B East 12/19/2022**

# Concourse B (Phase 3) December 2022



**AGENDA:** DISCUSSION ITEM (C)  
**DATE:** 18 January 2023  
**TO:** Airport Advisory Board  
**FROM:** Bill Wyatt, Executive Director  
**SUBJECT:** Snow Removal Operations

---

Eddie Clayson will present an update on Snow Removal Operations (presentation on file).



# SLC AIRPORT SNOW REMOVAL OPERATIONS

---

January 18, 2023





**Safe/efficient flow of:**

**Passengers**

**Bags**

**Aircraft**

# Snow Team



## Operations/Maintenance



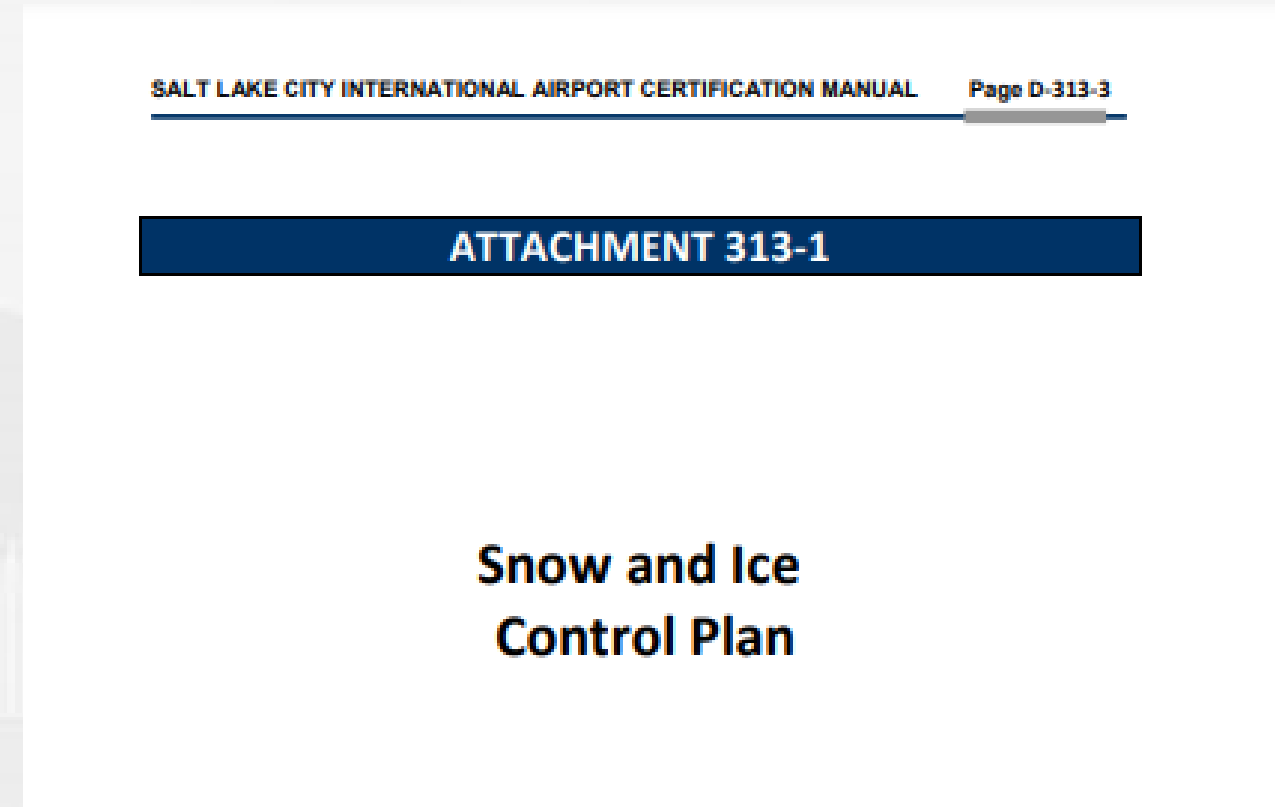


# Responsibilities



FAR 139 Compliance  
Ensure Airport Remains Safe By Adherence to FAA Regulations

Snow and Ice plan



## Priority 1 Surfaces

Runways and High-speed Turn-offs  
Taxiways Connecting to Ramp Parking  
Air Carrier Ramps  
ARFF Ramp Areas  
Mutual Aid Access Points

# Training



Preseason



Midseason



Postseason



# Planning/Scheduling



*Weathernet*

*Standby*

*Call out*

*Snow and Ice plan*

*Historical data*


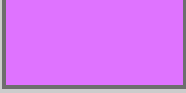



*Volunteers*

*Minimum staffing*

# Snow removal areas



**58,951,551 Sq. Ft.**  
**or**  
**1,353 Acres**  
**of Pavement**

<u>LEGEND</u>	<u>AREA</u>	<u>ACRE</u>
 APRON	18,380,713.95	421.96
 DEICING PAD	4,334,432.81	99.51
 ROAD/PARKING	15,544,675.81	356.88
 RUNWAY	5,774,349.55	132.56
 TAXIWAY	14,917,378.90	342.46



# Pretreat



Liquid: Potassium Acetate  
Solids: Sodium formate  
Sodium acetate  
FAA approved sand



# Equipment





# Equipment



# Contracts (3<sup>rd</sup> party)





Questions?



**AGENDA:** DISCUSSION ITEM (D)  
**DATE:** 18 January 2023  
**TO:** Airport Advisory Board  
**FROM:** Bill Wyatt, Executive Director  
**SUBJECT:** Election of Board Chair and Vice-Chair

---

---

The Board will be asked to elect the Chair and Vice-Chair for 2023. At the last meeting, the Board nominated Theresa Foxley as Chair and John Bradshaw as Vice-Chair.

**Airport Advisory Board  
Elections Script for Chair (January)**

1. **At our last meeting, Theresa Foxley was nominated for the position of Board Chair and John Bradshaw was nominated for the position of Vice Chair.**
  
2. **"May I please get a motion to elect by acclamation Theresa Foxley for the position of Board Chair?"**
  
3. **"May I please get a motion to elect by acclamation John Bradshaw for the position of Vice Chair?"**

(If more than one person was nominated for either office, the Board Chair calls for a vote.)

The new Chair and Vice-Chair take office at the February meeting.



Advisory Board  
Meeting

January 18, 2023

Media Clippings

<https://slcairport.com/assets/pdfDocuments/AABoard/bf6a806267/JanuaryClippingPacket2023.pdf>

Compiled by the Communication & Marketing Dept.



Advisory Board  
Meeting

January 18, 2023

Information

**SALT LAKE CITY DEPARTMENT OF AIRPORTS**  
**(An Enterprise Fund of Salt Lake City Corporation)**  
**Statements of Net Position (Unaudited)**  
**(Amounts in Thousands)**

<i>As of November 30,</i>	<b>2022</b>	<b>2021</b>
<b>ASSETS</b>		
<b>Current Assets</b>		
Cash and cash equivalents	\$ 84,660	\$ 193,789
Restricted cash and cash equivalents	381,356	615,732
Restricted investments	36,296	31,516
Airline and rental fees receivable	30,890	17,080
Loans receivable	6,121	7,347
Leases receivable	40,795	-
Other assets	6,827	6,613
<b>Total current assets</b>	<b>586,945</b>	<b>872,077</b>
<b>Noncurrent Assets</b>		
Restricted cash and cash equivalents	115,966	185,730
Restricted investments	171,277	129,037
Investments	(1)	921
Loans receivable	6,711	31,895
Leases receivable	163,879	-
Net pension asset	12,721	-
Other assets	12,023	2,909
<b>Total noncurrent assets and investments</b>	<b>482,576</b>	<b>350,492</b>
<b>Capital assets</b>		
Land	112,474	111,696
Building and improvements	3,481,782	3,445,889
Equipment	344,572	341,458
Construction in progress	914,118	493,856
<b>Total capital assets - at cost</b>	<b>4,852,946</b>	<b>4,392,899</b>
Less accumulated depreciation	1,018,557	896,024
<b>Net capital assets</b>	<b>3,834,389</b>	<b>3,496,875</b>
<b>Total noncurrent assets</b>	<b>4,316,965</b>	<b>3,847,367</b>
<b>Total Assets</b>	<b>4,903,910</b>	<b>4,719,444</b>
<b>Deferred Outflows of Resources</b>	<b>5,511</b>	<b>4,413</b>
<b>Total Assets and Deferred Outflows of Resources</b>	<b>\$ 4,909,421</b>	<b>\$ 4,723,857</b>

**SALT LAKE CITY DEPARTMENT OF AIRPORTS**  
**(An Enterprise Fund of Salt Lake City Corporation)**  
**Statements of Net Position (Unaudited)**  
**(Amounts in Thousands)**

<i>As of November 30,</i>	<b>2022</b>	<b>2021</b>
<b>LIABILITIES</b>		
<b>Current Liabilities</b>		
Accounts payable	\$ 57,726	\$ 40,070
Accrued compensation	1,927	1,699
Interest payable	55,931	52,664
Other accrued liabilities	23,845	19,389
Current bonds payable	21,920	20,345
<b>Total current liabilities</b>	<b>161,349</b>	<b>134,167</b>
<b>Noncurrent Liabilities</b>		
Revenue bonds payable	3,104,793	3,150,548
Noncurrent compensation liability	4,465	4,360
Net pension liability	-	1,152
Other accrued liabilities	25,111	24,560
<b>Total noncurrent liabilities</b>	<b>3,134,369</b>	<b>3,180,620</b>
<b>Total Liabilities</b>	<b>3,295,718</b>	<b>3,314,787</b>
<b>Deferred Inflows of Resources</b>		
Deferred inflows - revenue collected in advance	6,610	7,238
Deferred inflows - leases	204,674	-
Deferred inflows - pension	16,547	8,944
<b>Total Deferred Inflows of Resources</b>	<b>227,831</b>	<b>16,182</b>
<b>NET POSITION</b>		
Net investment in capital assets	1,344,671	1,225,685
Restricted for		
Capital projects	67,949	62,316
Debt service	297,269	323,446
Unrestricted	(324,017)	(218,559)
<b>Net Position</b>	<b>1,385,872</b>	<b>1,392,888</b>
<b>Total Liabilities, Deferred Inflows of Resources, and Net Position</b>	<b>\$ 4,909,421</b>	<b>\$ 4,723,857</b>

**SALT LAKE CITY DEPARTMENT OF AIRPORTS**

(An Enterprise fund of Salt Lake City Corporation)

**Statements of Revenues, Expenses, and Changes in Fund Net Position (Unaudited)**

(Amounts in Thousands)

<i>for the Five month period ended November,</i>	<b>2022</b>	<b>2021</b>
<b>Operating Revenues</b>		
Airline revenue	\$ 62,208	\$ 68,568
Terminal concessions	(244)	9,438
Landside concessions	41,955	36,243
Lease revenue	4,450	3,828
General aviation	1,757	1,379
State aviation tax	1,301	1,289
Other revenue	1,944	1,992
Operating revenues	113,371	122,737
Less airline revenue sharing	(6,480)	(5,632)
Total operating revenues	106,891	117,105
<b>Operating Expenses</b>		
Salaries and benefits	24,691	22,835
Materials and supplies	5,405	4,229
Maintenance contracts	8,419	8,056
Charges and services	11,439	10,999
Utilities	2,648	2,219
Inter-governmental	7,934	6,878
Other expenses	4,765	3,350
Total operating expenses before depreciation	65,301	58,566
<b>Operating Income Before Depreciation</b>	41,590	58,539
<b>Depreciation Expense</b>	61,409	82,029
<b>Operating Loss</b>	(19,819)	(23,490)
<b>Non-Operating Revenues (Expenses)</b>		
Passenger facility charges	20,804	20,485
Customer facility charges	5,207	5,021
Interest income	7,639	977
Interest expense	(49,297)	(50,553)
Bond issuance costs	-	(4,150)
Contribution of capital assets	-	239
Other revenue (expenses), net	276	3,888
Net non-operating loss	(15,371)	(24,093)
<b>Capital Contributions</b>		
Contributions and grants	11,301	24,249
Total capital contributions	11,301	24,249
<b>Net Position</b>		
Decrease in net position	(23,889)	(23,334)
Net Position, beginning of period	1,409,761	1,416,222
Net Position, end of period	\$ 1,385,872	\$ 1,392,888



**SALT LAKE CITY DEPARTMENT OF AIRPORTS**

(An Enterprise fund of Salt Lake City Corporation)

**OPERATING REVENUES AND EXPENDITURES TO BUDGET (Unaudited)**

(Amounts in Thousands)

	Jul 2022 - Nov 2022 ACTUALS	Jul 2022 - Nov 2022 BUDGET	SURPLUS/ DEFICIT	PERCENT CHANGE
<b>Revenues</b>				
Landing Fees	\$ 21,038	\$ 23,996	\$ (2,958)	-12.3%
Fuel Farm	881	754	127	16.8%
Aircraft Remain Overnight Fees	154	229	(75)	-32.9%
Cargo Bldg. & Ramp Use Fee	764	818	(54)	-6.6%
Security Charges to TSA	103	142	(39)	-27.7%
Extraordinary Service Charges	19	29	(10)	-34.9%
Passenger Boarding Bridges	751	660	91	13.7%
Tenant Telephone Fees	24	25	(1)	-5.1%
Terminal Rents	38,288	36,674	1,614	4.4%
General Aviation Hangars	450	474	(24)	-5.0%
FBO Hangars/Fuel Oil Royalty	297	328	(31)	-9.5%
Flight Kitchens	1,063	971	92	9.5%
Other Buildings & Office Space	2,482	2,473	9	0.4%
Food Service & Vending	1,110	7,815	(6,705)	-85.8%
News/Gift Shop	(1,478)	3,430	(4,908)	-143.1%
Car Rental	14,719	15,053	(334)	-2.2%
Leased Site Areas	2,160	1,996	164	8.2%
Auto Parking/Ground Transportation	27,218	24,469	2,749	11.2%
Advertising	124	241	(117)	-48.3%
State Aviation Fuel Tax	1,301	1,344	(43)	-3.2%
Military	78	78	-	0.0%
Glycol Recycling Sales	198	128	70	55.1%
Auxiliary Airport Fuel Sales	1,009	575	434	75.4%
Other	618	303	315	104.0%
Less: Airline Revenue Sharing	(6,480)	(5,882)	(598)	10.17%
<b>Total Operating Revenues</b>	<b>106,891</b>	<b>117,123</b>	<b>(10,232)</b>	<b>-8.7%</b>
<b>Expenses</b>				
Salary & Wages	17,442	18,920	1,478	7.8%
Employee Benefits	7,628	8,615	987	11.5%
Maintenance Supplies	2,616	4,576	1,960	42.8%
Automotive Supplies	1,998	1,674	(324)	-19.3%
Other Supplies	791	1,812	1,021	56.3%
Insurance Premiums	2,673	1,447	(1,226)	-84.8%
Janitorial Service	5,712	6,717	1,005	15.0%
Maintenance Contracts	2,706	3,572	866	24.2%
Other Contractual Services	6,108	7,531	1,423	18.9%
Professional & Tech Services	5,331	10,347	5,016	48.5%
Utilities	2,648	3,175	527	16.6%
Administrative Service Fee	584	402	(182)	-45.3%
Aircraft Rescue Fire Fighting	2,986	2,986	0	0.0%
Police Services	4,365	4,365	0	0.0%
Other Expenses	2,092	1,027	(1,065)	-103.8%
Contingency Reserve	-	417	417	100.0%
Operating Expenses Before Capitalized Salaries	65,680	77,583	11,903	15.3%
Capitalized Salaries	379	379	-	0.0%
<b>Total Operating Expenses</b>	<b>65,301</b>	<b>77,204</b>	<b>11,903</b>	<b>15.4%</b>
<b>Operating Income</b>	<b>\$ 41,590</b>	<b>\$ 39,919</b>	<b>\$ 1,671</b>	<b>4.2%</b>

**SALT LAKE CITY DEPARTMENT OF AIRPORTS**

(An Enterprise fund of Salt Lake City Corporation)

**OPERATING REVENUES AND EXPENDITURES TO PRIOR YEAR (Unaudited)**

(Amounts in Thousands)

	<b>Jul 2022 - Nov 2022</b>	<b>Jul 2021 - Nov 2021</b>	<b>DOLLAR CHANGE</b>	<b>PERCENT CHANGE</b>
<b>Revenues</b>				
Landing Fees	\$ 21,038	\$ 26,997	\$ (5,959)	-22.1%
Fuel Farm	881	878	3	0.3%
Aircraft Remain Overnight Fees	154	225	(71)	-31.3%
Cargo Bldg. & Ramp Use Fee	764	709	55	7.7%
Security Charges to TSA	103	107	(4)	-3.4%
Extraordinary Service Charges	19	20	(1)	-3.3%
Passenger Boarding Bridges	751	618	133	21.5%
Tenant Telephone Fees	24	25	(1)	-5.7%
Terminal Rents	38,288	38,575	(287)	-0.7%
General Aviation Hangars	450	479	(29)	-6.1%
FBO Hangars/Fuel Oil Royalty	297	280	17	6.0%
Flight Kitchens	1,063	878	185	21.1%
Other Buildings & Office Space	2,482	2,428	54	2.2%
Food Service & Vending	1,110	5,604	(4,494)	-80.2%
News/Gift Shops	(1,478)	3,565	(5,043)	-141.4%
Car Rental	14,719	14,633	86	0.6%
Leased Site Areas	2,160	1,865	295	15.8%
Auto Parking/Ground Transportation	27,218	21,593	5,625	26.1%
Advertising	124	268	(144)	-53.9%
State Aviation Fuel Tax	1,301	1,289	12	1.0%
Military	78	78	-	0.0%
Glycol Recycling Sales	198	128	70	54.6%
Auxiliary Airport Fuel Sales	1,009	620	389	62.7%
Other	618	875	(257)	-29.3%
Less: Airline Revenue Sharing	(6,480)	(5,632)	(848)	15.0%
<b>Operating Revenues</b>	<b>106,891</b>	<b>117,105</b>	<b>(10,214)</b>	<b>-8.7%</b>
<b>Expenses</b>				
Salary & Wages	\$ 17,442	\$ 16,034	\$ 1,408	8.8%
Employee Benefits	7,628	7,299	329	4.5%
Maintenance Supplies	2,616	2,418	198	8.2%
Automotive Supplies	1,998	1,320	678	51.4%
Other Supplies	791	491	300	61.0%
Insurance Premiums	2,673	2,539	134	5.3%
Janitorial Service	5,712	5,938	(226)	-3.8%
Maintenance Contracts	2,706	2,118	588	27.8%
Other Contractual Services	6,108	4,876	1,232	25.3%
Professional & Tech Service	5,331	6,123	(792)	-12.9%
Utilities	2,648	2,219	429	19.3%
Administrative Service Fee	584	883	(299)	-33.9%
Aircraft Rescue Fire Fighting	2,986	2,433	553	22.7%
Police Services	4,365	3,562	803	22.5%
Other Expenses	2,092	811	1,281	158.0%
Operating Expenses Before Capitalized Salaries	65,680	59,064	6,616	11.2%
Capitalized Salaries	379	498	(119)	-23.9%
<b>Total Operating Expenses</b>	<b>65,301</b>	<b>58,566</b>	<b>6,735</b>	<b>11.5%</b>
<b>Operating Income</b>	<b>\$ 41,590</b>	<b>\$ 58,539</b>	<b>\$ (16,949)</b>	<b>-29.0%</b>

## SALT LAKE CITY DEPARTMENT OF AIRPORTS

(An Enterprise fund of Salt Lake City Corporation)

### Statements of Cash Flows (Unaudited)

(Amounts in Thousands)

<i>for the month ended September 30,</i>	<b>2022</b>	<b>2021</b>
<b>Cash Flows from Operating Activities</b>		
Cash received from providing services	\$ 58,177	\$ 69,020
Cash paid for services for intra-governmental charges	(13,340)	(1,834)
Cash paid to suppliers	(11,587)	(23,527)
Cash paid to employees	(12,948)	(12,061)
<b>Net cash from operating activities</b>	<b>20,302</b>	<b>31,598</b>
<b>Cash Flows from Investing Activities</b>		
Cash paid for investments	(14,785)	(106,468)
Cash proceeds from investments	11,000	4,450
Interest received on investments and concession loans	4,247	10
Payments for concession loans	-	(593)
Payments received on concession loans	1,386	1,952
<b>Net cash from investing activities</b>	<b>1,848</b>	<b>(100,649)</b>
<b>Cash Flows from Capital and Related Financing Activities</b>		
Purchase of capital equipment	(1,543)	(1,557)
Payments for acquisition and construction of capital assets	(126,262)	(138,802)
Principal paid on revenue bonds	(21,920)	(1,140)
Proceeds from issuance of revenue bonds payable	-	1,139,949
Payment for capital assets contributed to TSA	-	(239)
Proceeds from line of credit	-	-
Payment on line of credit	(531)	(267,600)
Interest paid on bonds and line of credit	(67,665)	(45,249)
Bond issuance costs	-	(1,418)
Interest received from leases	1,337	-
Passenger facility charges	11,651	12,800
Customer facility charges	4,415	4,116
Proceeds from sale of capital assets and equipment	-	52
Contributions and grants	3,854	27,554
Other financing	-	-
<b>Net cash used for capital and related financing activities</b>	<b>(196,663)</b>	<b>728,465</b>
<b>Net (Decrease) in Cash and Cash Equivalents</b>	<b>(174,514)</b>	<b>659,414</b>
<b>Cash and Cash Equivalents - Beginning of Year</b>	<b>767,021</b>	<b>292,793</b>
<b>Cash and Cash Equivalents - End of Year</b>	<b>\$ 592,508</b>	<b>\$ 952,207</b>

## SALT LAKE CITY DEPARTMENT OF AIRPORTS

(An Enterprise fund of Salt Lake City Corporation)

### Statements of Cash Flows (Unaudited)

(Amounts in Thousands)

<i>for the Three month period ended September,</i>	<b>2022</b>	<b>2021</b>
<b>Reconciliation of Operating Income to Net</b>		
<b>Cash from Operating Activities</b>		
Operating loss	\$ (7,192)	\$ (9,607)
Adjustments to reconcile operating loss to net cash from operating activities		
Depreciation	36,845	49,217
Pension benefit	-	-
Changes in assets and liabilities		
Airline and rental fee receivable	9,311	2,265
Other assets	(2,055)	960
Accounts payable	(7,073)	(11,776)
Other accrued liabilities	(3,162)	334
Deferred inflows	(6,406)	136
Deposits and advance rentals	34	69
<b>Net cash from operating activities</b>	<b>20,302</b>	<b>31,598</b>
<b>Schedule of Non-cash Activities</b>		
Contributions and grants	(5,320)	(30,304)
Passenger facility charges (includes interest)	(2,908)	(3,844)
Customer facility charges (includes interest)	(3,021)	(2,460)
Bond issuance costs	-	(1,592)
Contributions of capital assets	-	(239)
<b>Total Noncash Activities</b>	<b>\$ (11,248)</b>	<b>\$ (38,439)</b>

# CONSTRUCTION REPORT

## TABLE OF CONTENTS

- I. Area Map of Project Locations
- II. Project Schedule
- III. Construction Analysis
- IV. Construction Report

SALT LAKE CITY DEPARTMENT OF AIRPORTS  
January 10, 2023

SALT LAKE CITY INTERNATIONAL AIRPORT  
CONSTRUCTION PROGRAM  
2022/2023 Construction Schedule

ID	Task Name	Start	Finish	Oct '22	Nov '22	Dec '22	Jan '23	Feb '23	Mar '23	Apr '23	May '23	J
1	<b>Project Title</b>	Mon 3/7/22	Fri 7/28/23									
2	(1) North Cargo Apron Site Development	Mon 4/4/22	Fri 4/28/23									
3	(2) Pump House No. 5 Renovations	Mon 3/7/22	Fri 7/28/23									
4	(3) Taxiways P, Q, N & H3 Pavement Rehab.	Tue 6/21/22	Mon 11/14/22									
5	(4) Gateway Building Restroom Renovations	Tue 3/22/22	Mon 5/22/23									
6	(5) Gate 39 Reconstruction	Tue 7/26/22	Thu 12/1/22									
7	(6) Electrical Vehicle Charging Stations (FY2022)	Mon 6/27/22	Thu 12/1/22									
8	(7) TVY Runway & Taxiway Rehabilitation	Mon 8/1/22	Sat 4/15/23									

Project: Microsoft Project (latest)  
Date: Tue 1/10/23

CONSTRUCTION



## **2022 - 2023 Project Legend**

### **Airfield**

1. North Cargo Apron Site Development
2. Pump House #5 Renovations
3. Taxiway P,Q,N & H3 Pavement Rehabilitation

### **Landside**

4. Gateway Building Restroom Renovations
5. Gate 39 Reconstruction
6. Electrical Vehicle Charging Stations



SALT LAKE CITY DEPARTMENT OF AIRPORTS  
CONSTRUCTION PROJECT STATUS 2022 - 2023

#	PROJECT NAME	ENGINEER'S ESTIMATE	BID AMOUNT	APPROVED CHANGE ORDERS TO DATE	% OF COST INCREASE TO DATE	STATUS	CONTRACTOR
<b>CONSTRUCTION</b>							
1	North Cargo Apron Site Development	\$ 25,763,000	\$ 22,141,148	\$ (12)	0.00%	on schedule	Ames Construction
2	Pump House No. 5 Renovations	\$ 841,630	\$ 1,630,000			on schedule	Saunders Construction
3	Taxiway P, Q, N and H3 Pavement Rehabilitation	\$ 2,244,861	\$ 2,515,291	\$ (78,756)	-3.13%	complete	Staker Parson Companies
4	Gateway Building Restroom Renovations	\$ 405,898	\$ 403,636	\$ 13,913	3.45%	on schedule	Paulsen Construction
5	Gate 39 Reconstruction	\$ 1,841,505	\$ 2,127,962			on schedule	Cal Wadsworth Construction
6	Electrical Vehicle Charging Stations (FY2022)	\$ 217,656	\$ 337,500			complete	Cal Wadsworth Construction
7	TVY Runway & Taxiway Rehabilitation	\$ 3,355,248	\$ 3,386,851	\$ 186,025	5.49%	on schedule	Granite Construction
	<b>Total</b>	<b>\$ 34,669,798</b>	<b>\$ 32,542,388</b>	<b>\$ 121,170</b>	<b>0.37%</b>		
Budget amount, Engineer's estimate, and Bid amount is based on construction cost only.							



## CONSTRUCTION REPORT

### CONSTRUCTION

- (1) **North Cargo Apron Site Development** - The sanitary sewer lift station construction continues at 1580 North and 4000 West and light pole installation has begun. The remainder of the construction work for this project is in winter shutdown.
- (2) **Pump House No. 5 Renovation** - This project is in winter shutdown. Pump House 5 will be temporarily closed in the Spring for four weeks to complete the work. The agitator piping and pump will be completed during the closure time.
- (3) **Taxiways P, Q, N and H3 Pavement Rehabilitation** - Substantial completion for this project was issued to the Contractor on October 21, 2022. All punch list items have been completed. Final close-out documentation is being prepared.
- (4) **Gateway Building Restroom Renovations** - The Contractor will begin installing terrazzo tile this week. It is anticipated that the eastside restroom will open on January 20, 2023. The westside restroom work will begin on February 22, 2023.
- (5) **Gate 39 Reconstruction** - A final walk through for this project will take place on January 12, 2023. The gate is scheduled to open on January 15, 2023. Painting and concrete work will take place in Spring 2023 when weather permits.
- (6) **Electrical Vehicle Charging Stations** - The Contractor was issued substantial completion on November 21, 2022. All punch list items have been completed with the exception of a new transformer that will be installed by Rocky Mountain Power in February 2023 to power the charging stations.
- (7) **TVY Runway and Taxiway Rehabilitation** - Installation of the airfield lighting regulators and associated software updates will be performed by ADB in March 2023. The Contractor will apply permanent paint as weather permits, tentatively anticipated for April 2023.



**SALT LAKE CITY INTERNATIONAL AIRPORT  
AIR TRAFFIC STATISTICS AND ACTIVITY REPORT  
ELEVEN MONTHS ENDED NOVEMBER 2022**

	November 2022	CHANGE	Year to date 2022	CHANGE	12 MO ROLLING Ending 11/2022	CHANGE
<b>PASSENGERS</b>						
<i>DOMESTIC</i>						
Enplaned - Local	646,419	6.98%	7,802,927	22.26%	8,469,839	25.68%
Enplaned - Connections	362,830	-9.08%	4,046,331	6.58%	4,385,305	10.18%
Less International Enplaned	-43,169		-538,511		-571,793	
	966,080	-0.65%	11,310,747	14.00%	12,283,351	17.61%
Deplaned - Local	659,972	9.28%	7,770,810	21.94%	8,463,784	25.49%
Deplaned - Connection	362,830	-9.08%	4,046,331	6.58%	4,385,305	10.18%
Less International Deplaned	-37,174		-552,962		-584,976	
	985,628	1.39%	11,264,179	13.69%	12,264,113	17.39%
<b>TOTAL DOMESTIC</b>	<b>1,951,708</b>	<b>0.37%</b>	<b>22,574,926</b>	<b>13.84%</b>	<b>24,547,464</b>	<b>17.50%</b>
<i>INTERNATIONAL</i>						
Enplaned	43,169	39.66%	538,511	109.23%	571,793	107.78%
Deplaned	37,174	20.29%	552,962	111.85%	584,976	111.29%
<b>TOTAL INTERNATIONAL</b>	<b>80,343</b>	<b>29.98%</b>	<b>1,091,473</b>	<b>110.55%</b>	<b>1,156,769</b>	<b>109.54%</b>
<b>TOTAL PASSENGERS</b>	<b>2,032,051</b>	<b>1.29%</b>	<b>23,666,399</b>	<b>16.31%</b>	<b>25,704,233</b>	<b>19.87%</b>
<b>LANDED WEIGHT</b>						
Air Carriers	1,130,085,637	-3.70%	13,006,050,974	-3.33%	14,169,422,908	-2.26%
Cargo Carriers	103,845,864	-7.31%	1,126,091,231	-2.85%	1,298,045,379	-2.86%
<b>TOTAL LANDED WEIGHT (LBS)</b>	<b>1,233,931,501</b>	<b>-4.02%</b>	<b>14,132,142,205</b>	<b>-3.29%</b>	<b>15,467,468,287</b>	<b>-2.31%</b>
<b>MAIL</b>						
Enplaned	2,453,068	-8.68%	28,874,042	-8.60%	30,952,793	-6.23%
Deplaned	1,680,663	23.32%	16,743,060	8.85%	18,263,289	11.22%
<b>TOTAL MAIL (LBS)</b>	<b>4,133,731</b>	<b>2.09%</b>	<b>45,617,102</b>	<b>-2.89%</b>	<b>49,216,082</b>	<b>-0.44%</b>
<b>CARGO</b>						
Enplaned	16,093,485	-3.18%	170,284,086	-8.75%	191,600,359	-8.92%
Deplaned	16,721,388	-4.91%	181,573,768	-0.59%	203,522,262	-0.48%
<b>TOTAL CARGO (LBS)</b>	<b>32,814,873</b>	<b>-4.06%</b>	<b>351,857,854</b>	<b>-4.72%</b>	<b>395,122,621</b>	<b>-4.76%</b>
<b>MAIL &amp; CARGO</b>						
Enplaned	8,047	-3.18%	85,142	-8.75%	95,800	-8.92%
Deplaned	8,361	-4.90%	90,787	-0.59%	101,761	-0.49%
<b>TOTAL MAIL &amp; CARGO (TONS)</b>	<b>16,408</b>	<b>-4.06%</b>	<b>175,929</b>	<b>-4.72%</b>	<b>197,561</b>	<b>-4.76%</b>
<b>AIRCRAFT OPERATIONS</b>						
Passenger Aircraft	18,106	-7.31%	213,996	-6.75%	233,526	-5.81%
All-Cargo Aircraft	1,462	-14.60%	16,912	-8.75%	19,202	-7.94%
General Aviation	4,826	-14.10%	62,109	-2.66%	68,148	-1.61%
Military	124	-44.14%	2,892	8.68%	3,066	6.46%
<b>TOTAL AIRCRAFT OPERATIONS</b>	<b>24,518</b>	<b>-9.48%</b>	<b>295,909</b>	<b>-5.91%</b>	<b>323,942</b>	<b>-4.99%</b>

**SALT LAKE CITY INTERNATIONAL AIRPORT  
PASSENGER TRAFFIC REPORT  
ELEVEN MONTHS ENDED NOVEMBER 2022**

	November 2021	November 2022	% CHANGE	Year to date 2021	Year to date 2022	% CHANGE	12 MO ROLLING Ending 11/2022	% CHANGE
<b>ENPLANED PASSENGERS</b>								
AEROMEXICO	2,816	2,833	0.6%	2,816	28,515	912.6%	31,391	1014.7%
AIR CANADA	-	804	100.0%	-	6,624	100.0%	6,624	100.0%
ALASKA	9,712	12,869	32.5%	101,893	126,675	24.3%	136,737	32.7%
Horizon Air / Alaska	3,821	-	-100.0%	26,981	8,609	-68.1%	9,728	-66.3%
Skywest / Alaska	9,736	6,981	-28.3%	130,308	134,791	3.4%	146,499	6.1%
AMERICAN	39,317	43,787	11.4%	517,153	489,778	-5.3%	537,537	-1.9%
Envoy Air	1,530	-	-100.0%	23,810	4,990	-79.0%	6,930	-70.9%
American/Mesa Air	77	-	-100.0%	10,683	13,607	27.4%	13,766	27.6%
Republic	-	-	0.0%	5,201	-	-100.0%	-	-100.0%
SkyWest (American)	10,585	-	-100.0%	86,621	43,437	-49.9%	50,149	-46.3%
DELTA	595,030	604,035	1.5%	5,633,657	6,928,786	23.0%	7,508,863	26.9%
SkyWest (Delta Connection)	163,598	138,372	-15.4%	1,767,650	1,679,113	-5.0%	1,838,581	-1.7%
EUROWINGS DISCOVER	-	-	0.0%	-	10,654	100.0%	10,654	100.0%
FRONTIER	14,974	19,717	31.7%	215,619	178,893	-17.0%	195,441	-15.9%
JETBLUE	15,250	20,453	34.1%	177,719	260,370	46.5%	277,735	50.4%
KLM ROYAL DUTCH AIRLINES	-	-	0.0%	-	29,944	100.0%	29,944	100.0%
SOUTHWEST	98,938	106,989	8.1%	1,017,913	1,253,606	23.2%	1,359,856	26.9%
SPIRIT	-	14,053	100.0%	-	109,330	100.0%	109,330	100.0%
UNITED	10,111	12,292	21.6%	174,956	230,914	32.0%	245,831	33.2%
Mesa Airlines (United Express)	-	-	0.0%	9,163	17,394	89.8%	18,346	98.1%
Republic Airways (United)	575	-	-100.0%	3,759	345	-90.8%	780	-82.1%
SkyWest (United Express)	27,225	25,456	-6.5%	272,727	290,129	6.4%	317,668	9.6%
Charters	1	608	60700.0%	227	2,754	1113.2%	2,754	1113.2%
West Coast Charters	-	0	0.0%	-	0	0.0%	0	0.0%
<b>TOTAL ENPLANED PASSENGERS</b>	<b>1,003,296</b>	<b>1,009,249</b>	<b>0.6%</b>	<b>10,178,856</b>	<b>11,849,258</b>	<b>16.4%</b>	<b>12,855,144</b>	<b>19.9%</b>
AeroMexico	3,200	2,874	-10.2%	3,200	38,565	1105.2%	42,002	1212.6%
AIR CANADA	-	810	100.0%	-	6,859	100.0%	6,859	100.0%
ALASKA AIR	10,094	13,541	34.1%	104,243	128,923	23.7%	138,908	32.0%
Horizon Air / Alaska	3,951	-	-100.0%	27,141	8,519	-68.6%	9,554	-67.1%
Skywest / Alaska	9,934	6,932	-30.2%	129,056	131,679	2.0%	144,420	5.4%
AMERICAN	38,524	43,773	13.6%	519,770	482,275	-7.2%	531,473	-3.7%
Envoy Air (American)	1,512	-	-100.0%	23,321	5,744	-75.4%	7,575	-67.5%
Mesa Air	69	-	-100.0%	10,382	14,154	36.3%	14,313	36.3%
Republic	-	-	0.0%	4,901	-	-100.0%	-	-100.0%
SkyWest (American)	10,376	-	-100.0%	86,727	43,199	-50.2%	50,015	-46.9%
DELTA	596,692	617,953	3.6%	5,621,255	6,891,044	22.6%	7,489,932	26.7%
SkyWest (Delta Connection)	162,122	138,980	-14.3%	1,767,033	1,693,569	-4.2%	1,852,313	-0.9%
EUROWINGS DISCOVER	-	-	0.0%	-	11,773	100.0%	11,773	100.0%
FRONTIER	14,872	19,017	27.9%	217,228	178,316	-17.9%	195,208	-16.7%
JETBLUE	15,073	20,453	35.7%	173,685	253,629	46.0%	272,000	50.0%
KLM ROYAL DUTCH AIRLINES	-	-	0.0%	-	36,239	100.0%	36,239	100.0%
SOUTHWEST	98,309	105,986	7.8%	1,008,661	1,241,506	23.1%	1,349,691	27.0%
SPIRIT	-	14,075	100.0%	-	110,456	100.0%	110,456	100.0%
UNITED	10,012	12,157	21.4%	177,721	228,525	28.6%	243,721	28.4%
Mesa Airlines / United Express	-	-	0.0%	10,596	18,709	76.6%	19,668	83.7%
Republic Airways (United)	525	-	-100.0%	3,636	317	-91.3%	700	-84.1%
SkyWest (United Express)	27,709	25,511	-7.9%	280,267	289,780	3.4%	318,907	7.1%
Charters	-	740	100.0%	352	3,361	854.8%	3,362	855.1%
West Coast Charters	-	0	0.0%	-	0	0.0%	0	0.0%
<b>TOTAL DEPLANED PASSENGERS</b>	<b>1,002,974</b>	<b>1,022,802</b>	<b>2.0%</b>	<b>10,169,175</b>	<b>11,817,141</b>	<b>16.2%</b>	<b>12,849,089</b>	<b>19.8%</b>
<b>TOTAL PASSENGERS*</b>	<b>2,006,270</b>	<b>2,032,051</b>	<b>1.3%</b>	<b>20,348,031</b>	<b>23,666,399</b>	<b>16.3%</b>	<b>25,704,233</b>	<b>19.9%</b>
<b>INTERNATIONAL - ENPLANED</b>								
AEROMEXICO	2,816	2,833	0.6%	2,816	28,515	912.6%	31,391	1014.7%
AIR CANADA	-	804	100.0%	-	6,624	100.0%	6,624	100.0%
DELTA	26,706	39,532	48.0%	252,117	445,276	76.6%	473,859	75.6%
SkyWest (Delta Connection)	1,387	-	-100.0%	2,446	17,398	611.3%	19,221	685.8%
EUROWINGS DISCOVER	-	-	0.0%	-	10,654	100.0%	10,654	100.0%
KLM ROYAL DUTCH AIRLINES	-	-	0.0%	-	29,944	100.0%	29,944	100.0%
Charters	-	-	0.0%	-	98	100.0%	98	100.0%
<b>TOTAL ENPLANED INTERNATIONAL</b>	<b>30,909</b>	<b>43,169</b>	<b>39.7%</b>	<b>257,379</b>	<b>538,509</b>	<b>109.2%</b>	<b>571,791</b>	<b>107.8%</b>
AEROMEXICO	3,200	2,874	-10.2%	3,200	38,565	1105.2%	42,002	1212.6%
AIR CANADA	-	810	100.0%	-	6,859	100.0%	6,859	100.0%
DELTA	26,270	33,490	27.5%	255,140	438,836	72.0%	465,808	71.9%
SkyWest (Delta Connection)	1,433	-	-100.0%	2,675	20,552	668.3%	22,157	728.3%
EUROWINGS DISCOVER	-	-	0.0%	-	11,773	100.0%	11,773	100.0%
KLM ROYAL DUTCH AIRLINES	-	-	0.0%	-	36,239	100.0%	36,239	100.0%
Charters	-	-	0.0%	-	136	100.0%	136	100.0%
<b>TOTAL DEPLANED INTERNATIONAL</b>	<b>30,903</b>	<b>37,174</b>	<b>20.3%</b>	<b>261,015</b>	<b>552,960</b>	<b>111.8%</b>	<b>584,974</b>	<b>111.3%</b>
<b>TOTAL INTERNATIONAL PASSENGERS</b>	<b>61,812</b>	<b>80,343</b>	<b>30.0%</b>	<b>518,394</b>	<b>1,091,469</b>	<b>110.5%</b>	<b>1,156,765</b>	<b>109.5%</b>

\*Includes International

**SALT LAKE CITY INTERNATIONAL AIRPORT  
ELEVEN MONTHS ENDED NOVEMBER 2022  
Based on Total Enplanements**

**MARKET SHARE**

	November 2021	MARKET SHARE	November 2022	MARKET SHARE	Year to date 2021	MARKET SHARE	Year to date 2022	MARKET SHARE	12 MO ROLLING Ending 11/2021	12 MO ROLLING Ending 11/2022	MARKET SHARE
AEROMEXICO	2,816	0.28%	2,833	0.28%	2,816	0.03%	28,515	0.24%	2,816	31,391	0.24%
ALASKA	23,269	2.32%	19,850	1.97%	259,182	2.55%	270,075	2.28%	269,935	292,964	2.28%
AMERICAN	51,509	5.13%	43,787	4.34%	643,468	6.32%	551,812	4.66%	681,245	608,382	4.73%
DELTA	758,628	75.61%	742,407	73.56%	7,401,307	72.71%	8,607,899	72.65%	7,788,273	9,347,444	72.71%
EUROWINGS DISCOVER	-	0.00%	-	0.00%	-	0.00%	10,654	0.09%	-	10,654	0.08%
FRONTIER	14,974	1.49%	19,717	1.95%	215,619	2.12%	178,893	1.51%	232,482	195,441	1.52%
JETBLUE	15,250	1.52%	20,453	2.03%	177,719	1.75%	260,370	2.20%	184,724	277,735	2.16%
KLM ROYAL DUTCH	-	0.00%	-	0.00%	-	0.00%	29,944	0.25%	-	29,944	0.23%
SOUTHWEST	98,938	9.86%	106,989	10.60%	1,017,913	10.00%	1,253,606	10.58%	1,071,350	1,359,856	10.58%
SPIRIT	-	0.00%	14,053	1.39%	-	0.00%	109,330	0.92%	-	109,330	0.85%
UNITED	37,911	3.78%	37,748	3.74%	460,605	4.53%	538,782	4.55%	487,975	582,625	4.53%
Charters	1	0.00%	608	0.06%	227	0.00%	2,754	0.02%	227	2,754	0.02%
<b>TOTAL ENPLANEMENTS</b>	<b>1,003,296</b>	<b>100%</b>	<b>1,009,249</b>	<b>100%</b>	<b>10,178,856</b>	<b>100%</b>	<b>11,849,258</b>	<b>100%</b>	<b>10,719,027</b>	<b>12,855,144</b>	<b>100%</b>

**PERCENT CHANGE YOY**

	November 2021	November 2022	PERCENT CHANGE	YTD 2021	YTD 2022	PERCENT CHANGE	12 MO ROLLING Ending 11/2021	12 MO ROLLING Ending 11/2022	PERCENT CHANGE
AEROMEXICO	2,816	2,833	100.00%	2,816	28,515	100.00%	2,816	31,391	100.00%
ALASKA	23,269	19,850	-14.69%	259,182	270,075	4.20%	269,935	292,964	8.53%
AMERICAN	51,509	43,787	-14.99%	643,468	551,812	-14.24%	681,245	608,382	-10.70%
DELTA	758,628	742,407	-2.14%	7,401,307	8,607,899	16.30%	7,788,273	9,347,444	20.02%
EUROWINGS DISCOVER	-	-	100.00%	-	10,654	100.00%	-	10,654	100.00%
FRONTIER	14,974	19,717	31.67%	215,619	178,893	-17.03%	232,482	195,441	-15.93%
JETBLUE	15,250	20,453	34.12%	177,719	260,370	46.51%	184,724	277,735	50.35%
KLM ROYAL DUTCH	-	-	0.00%	-	29,944	0.00%	-	29,944	100.00%
SOUTHWEST	98,938	106,989	8.14%	1,017,913	1,253,606	23.15%	1,071,350	1,359,856	26.93%
SPIRIT	-	14,053	100.00%	-	109,330	100.00%	-	109,330	100.00%
UNITED	37,911	37,748	-0.43%	460,605	538,782	16.97%	487,975	582,625	19.40%
Charters	1	608	60700.00%	227	2,754	1113.22%	227	2,754	1113.22%
<b>TOTAL ENPLANEMENTS</b>	<b>1,003,296</b>	<b>1,009,249</b>	<b>0.6%</b>	<b>10,178,856</b>	<b>11,849,258</b>	<b>16.4%</b>	<b>10,719,027</b>	<b>12,855,144</b>	<b>19.9%</b>

**SALT LAKE CITY INTERNATIONAL AIRPORT  
LANDING ACTIVITY  
ELEVEN MONTHS ENDED NOVEMBER 2022**

	November 2021	November 2022	CHANGE	Year to date 2021	Year to date 2022	CHANGE	12 MO ROLLING Ending 11/2022	% CHANGE
<b>TOTAL NUMBER OF LANDINGS</b>								
<b>SCHEDULED CARRIERS</b>								
AEROMEXICO	30	30	0.0%	30	332	1006.7%	363	1110.0%
AIR CANADA	-	13	100.0%	-	78	100.0%	78	100.0%
ALASKA	97	109	12.4%	852	937	10.0%	1,024	17.3%
Horizon Air / Alaska	24	-	-100.0%	456	121	-73.5%	136	-73.0%
Skywest / Alaska	169	110	-34.9%	2,352	2,058	-12.5%	2,255	-11.7%
AMERICAN	262	330	26.0%	3,677	2,986	-18.8%	3,286	-15.7%
Mesa Air (American)	1	-	-100.0%	165	189	14.5%	191	14.4%
Envoy Air (American)	22	-	-100.0%	349	86	-75.4%	114	-67.3%
Republic/ (American)	-	-	0.0%	37	-	-100.0%	-	-100.0%
SkyWest (American)	186	-	-100.0%	1,654	718	-56.6%	827	-54.0%
DELTA	4,312	4,175	-3.2%	46,274	47,550	2.8%	51,730	3.3%
SkyWest (Delta Connection)	2,859	2,381	-16.7%	37,645	28,966	-23.1%	31,758	-22.6%
EUROWINGS DISCOVER	-	-	0.0%	-	47	100.0%	47	100.0%
FRONTIER	98	117	19.4%	1,537	1,148	-25.3%	1,253	-24.7%
JETBLUE	121	137	13.2%	1,559	1,721	10.4%	1,858	13.0%
KLM ROYAL DUTCH AIRLINES	-	-	0.0%	-	91	100.0%	91	100.0%
SOUTHWEST	850	888	4.5%	8,687	9,795	12.8%	10,620	16.1%
SPIRIT	-	95	100.0%	-	723	100.0%	723	100.0%
UNITED	82	86	4.9%	1,499	1,670	11.4%	1,778	10.0%
Mesa / United Express	-	-	0.0%	280	263	-6.1%	276	-2.1%
Republic Airways Holdings	8	-	-100.0%	57	5	-91.2%	11	-84.1%
SkyWest (United Express)	472	394	-16.5%	4,899	4,520	-7.7%	4,998	-4.8%
Trans States	-	-	0.0%	-	-	0.0%	-	0.0%
<b>SUBTOTAL SCHEDULED CARRIERS:</b>	<b>9,593</b>	<b>8,865</b>	<b>-7.6%</b>	<b>112,009</b>	<b>104,004</b>	<b>-7.1%</b>	<b>113,417</b>	<b>-6.3%</b>
<b>CHARTER CARRIERS</b>								
ALLEGiant AIR	-	4	100.0%	-	12	100.0%	12	100.0%
BOMBARDIER BUSINESS JETS	31	38	22.6%	603	667	10.6%	743	11.7%
BOUTIQUE AIR	-	-	0.0%	-	-	0.0%	-	0.0%
DELTA PRIVATE JETS	-	-	0.0%	-	-	0.0%	-	0.0%
EXECUTIVE JET MANAGEMENT	-	-	0.0%	-	-	0.0%	-	0.0%
FLIGHT OPTIONS	-	-	0.0%	-	-	0.0%	-	0.0%
KALITTA CHARTERS	4	-	-100.0%	80	23	-71.3%	30	-65.5%
KEYLIME AIR	-	-	0.0%	4	10	150.0%	10	150.0%
NETJETS	130	139	6.9%	1,962	1,987	1.3%	2,221	4.3%
SUNSET AVIATION	-	-	0.0%	-	-	0.0%	-	0.0%
SWIFT AIR	-	-	0.0%	-	-	0.0%	-	0.0%
SUN COUNTRY	-	2	100.0%	-	38	100.0%	38	100.0%
XOJET	12	-	-100.0%	157	251	59.9%	290	84.7%
OTHER CHARTER	-	5	100.0%	3	2	-33.3%	3	0.0%
<b>SUBTOTAL CHARTER CARRIERS:</b>	<b>177</b>	<b>188</b>	<b>6.2%</b>	<b>2,809</b>	<b>2,990</b>	<b>6.4%</b>	<b>3,347</b>	<b>9.9%</b>
<b>CARGO CARRIERS</b>								
AERO CHARTER & TRANSPORT	-	-	0.0%	-	-	0.0%	-	0.0%
AIRNET 11 LLC	6	5	-16.7%	53	54	1.9%	62	17.0%
ALPINE AVIATION	226	182	-19.5%	2,062	2,231	8.2%	2,476	11.9%
AMERIFLIGHT	22	23	4.5%	969	249	-74.3%	273	-76.2%
AMERIJET INTERNATIONAL	12	21	75.0%	12	165	1275.0%	182	100.0%
CORPORATE AIR (BILLINGS)	132	115	-12.9%	1,511	1,392	-7.9%	1,548	-7.1%
EMPIRE	16	18	12.5%	196	187	-4.6%	208	-3.7%
FEDERAL EXPRESS	142	142	0.0%	1,621	1,530	-5.6%	1,733	-6.4%
GEM AIR	82	34	-58.5%	632	568	-10.1%	699	-6.4%
NORTHERN AIR CARGO	22	25	13.6%	144	276	91.7%	302	109.7%
SOUTHERN AIR	-	-	0.0%	-	-	0.0%	-	0.0%
UPS	147	131	-10.9%	1,692	1,492	-11.8%	1,742	-11.4%
WESTERN AIR EXPRESS	45	31	-31.1%	291	262	-10.0%	315	-1.3%
OTHER CARGO	1	4	300.0%	10	54	440.0%	60	150.0%
<b>SUBTOTAL CARGO CARRIERS:</b>	<b>853</b>	<b>731</b>	<b>-14.3%</b>	<b>9,193</b>	<b>8,460</b>	<b>-8.0%</b>	<b>9,600</b>	<b>-7.2%</b>
<b>TOTAL LANDINGS</b>	<b>10,623</b>	<b>9,784</b>	<b>-7.9%</b>	<b>124,011</b>	<b>115,454</b>	<b>-6.9%</b>	<b>126,364</b>	<b>-6.0%</b>
<b>TOTAL LANDED WEIGHT</b>								
<b>SCHEDULED CARRIERS</b>								
AEROMEXICO	2,843,940	2,843,940	0.0%	2,843,940	31,472,936	1006.7%	34,411,674	1110.0%
AIR CANADA	-	2,002,000	100.0%	-	11,984,000	100.0%	11,984,000	100.0%
ALASKA	14,710,324	16,710,498	13.6%	129,501,494	140,714,646	8.7%	154,248,660	16.3%
Horizon Air / Alaska	1,798,968	-	-100.0%	34,180,392	9,069,797	-73.5%	10,194,152	-73.0%
Skywest / Alaska	12,667,733	8,245,270	-34.9%	176,298,864	154,261,506	-12.5%	169,028,035	-11.7%
AMERICAN	41,508,536	48,524,710	16.9%	596,371,546	477,061,380	-20.0%	524,368,362	-17.0%
Envoy Air (American)	1,646,260	-	-100.0%	26,152,270	6,440,420	-75.4%	8,539,020	-67.3%
American/Mesa Air	73,500	-	-100.0%	12,209,100	14,064,300	15.2%	14,211,300	15.0%
Republic (American)	-	-	0.0%	2,773,150	-	-100.0%	-	-100.0%
SkyWest (American)	12,879,250	-	-100.0%	112,023,500	48,586,850	-56.6%	55,977,300	-54.0%
DELTA	696,722,615	665,598,371	-4.5%	7,572,472,333	7,532,241,916	-0.5%	8,209,414,766	0.3%
SkyWest (Delta Connection)	192,487,142	167,010,390	-13.2%	2,497,333,639	1,997,719,025	-20.0%	2,186,645,769	-19.7%
EUROWINGS DISCOVER	-	-	0.0%	-	19,192,800	100.0%	19,192,800	100.0%
FRONTIER	15,548,004	17,076,966	9.8%	228,133,592	168,374,304	-26.2%	185,005,654	-24.9%
JETBLUE	17,206,200	19,481,400	13.2%	221,689,800	244,726,200	10.4%	264,207,600	13.0%

**SALT LAKE CITY INTERNATIONAL AIRPORT  
LANDING ACTIVITY  
ELEVEN MONTHS ENDED NOVEMBER 2022**

	November 2021	November 2022	CHANGE	Year to date 2021	Year to date 2022	CHANGE	12 MO ROLLING Ending 11/2022	% CHANGE
KLM ROYAL DUTCH AIRLINES	-	-	0.0%	-	38,864,180	100.0%	38,864,180	100.0%
SOUTHWEST	114,874,400	122,249,900	6.4%	1,173,827,200	1,331,633,200	13.4%	1,443,538,800	17.0%
SPIRIT	-	13,508,810	100.0%	-	102,809,154	100.0%	102,809,154	100.0%
UNITED	11,301,960	12,729,300	12.6%	211,797,240	241,512,200	14.0%	257,041,020	12.4%
Mesa / United Express	-	-	0.0%	21,000,000	19,725,000	-6.1%	20,700,000	-2.1%
Republic Airways Holdings	600,000	-	-100.0%	4,223,361	364,200	-91.4%	808,800	-84.1%
SkyWest (United Express)	31,105,723	27,472,626	-11.7%	343,708,309	312,991,215	-8.9%	344,082,594	-6.2%
Trans States	-	-	0.0%	-	-	0.0%	-	0.0%
<b>SUBTOTAL SCHEDULED CARRIERS:</b>	<b>1,167,974,555</b>	<b>1,123,454,181</b>	<b>-3.8%</b>	<b>13,366,539,730</b>	<b>12,903,809,229</b>	<b>-3.5%</b>	<b>14,055,273,640</b>	<b>-2.4%</b>
<b>CHARTER CARRIERS</b>								
ALLEGIAN AIR	0	570,996	100.0%	-	1,705,271	100.0%	1,705,271	100.0%
AMERISTAR	-	-	0.0%	-	107,000	100.0%	107,000	100.0%
BOEING COMMERCIAL AIRPLANE	-	-	0.0%	-	-	0.0%	163,900	100.0%
BOMBARDIER	1,022,153	1,427,497	39.7%	20,108,021	23,291,397	15.8%	26,096,690	17.8%
BOUTIQUE AIR	-	-	0.0%	-	-	0.0%	-	0.0%
DELTA PRIVATE JETS	-	-	0.0%	-	-	0.0%	-	0.0%
EXECUTIVE JET MANAGEMENT	-	-	0.0%	-	-	0.0%	-	0.0%
FLIGHT OPTIONS	-	-	0.0%	-	-	0.0%	-	0.0%
KALITTA CHARTERS	168,300	152,300	-9.5%	2,098,120	862,600	-58.9%	1,116,440	-57.0%
KEYLIME AIR	-	63,448	100.0%	131,526	364,948	177.5%	364,948	177.5%
MIAMI AIR	-	-	0.0%	-	-	0.0%	-	0.0%
NETJETS	4,060,141	3,844,915	-5.3%	60,969,002	58,027,229	-4.8%	65,298,859	-1.0%
SIERRA PACIFIC	-	-	0.0%	330,000	110,000	-66.7%	110,000	-66.7%
SUN COUNTRY	-	292,600	100.0%	-	5,508,100	100.0%	5,508,100	100.0%
SWIFT AIR	-	-	0.0%	-	-	0.0%	-	0.0%
VIRGIN AMERICA	-	-	0.0%	-	-	0.0%	-	0.0%
XOJET	487,300	-	-100.0%	6,180,750	9,242,800	49.5%	10,756,900	74.0%
OTHER CHARTER	-	-	0.0%	-	-	0.0%	-	0.0%
<b>SUBTOTAL CHARTER CARRIERS:</b>	<b>5,737,894</b>	<b>6,351,756</b>	<b>10.7%</b>	<b>89,817,419</b>	<b>99,219,345</b>	<b>10.5%</b>	<b>111,228,108</b>	<b>14.2%</b>
<b>CARGO CARRIERS</b>								
ABX AIR INC	-	272,000	100.0%	1,371,000	3,874,000	-	4,440,000	223.9%
AIRNET 11	91,800	76,500	-16.7%	821,400	838,100	2.0%	964,000	17.4%
ALPINE AVIATION	3,149,800	2,529,800	-19.7%	28,658,600	30,750,300	7.3%	34,221,600	10.5%
AMERIFLIGHT	359,094	351,100	-2.2%	13,050,376	3,972,988	-69.6%	4,359,388	-71.5%
AMERIJET INTERNATIONAL	3,264,000	5,712,000	75.0%	3,264,000	44,934,000	1276.7%	49,558,000	1418.3%
AMERISTAR	-	-	0.0%	54,600	81,700	49.6%	408,500	648.2%
ATLAS AIR	326,000	-	-100.0%	870,000	-	-100.0%	-	-100.0%
CORPORATE AIR (BILLINGS)	1,122,000	977,500	-12.9%	12,843,500	11,832,000	-7.9%	13,158,000	-7.1%
EMPIRE	753,088	847,224	12.5%	8,465,757	8,790,803	3.8%	9,779,231	4.0%
FEDEX EXPRESS	48,845,700	47,896,700	-1.9%	555,303,800	522,737,100	-5.9%	592,341,100	-6.3%
GEM AIR	682,000	289,000	-57.6%	5,333,000	4,807,000	-9.9%	5,862,000	-6.7%
NORTHERN AIR CARGO	2,662,000	3,021,000	13.5%	17,424,000	33,372,000	91.5%	36,518,000	109.6%
SOUTHERN AIR INC	-	-	0.0%	-	-	0.0%	-	0.0%
SWIFT AIR	-	432,000	100.0%	-	5,616,000	100.0%	5,616,000	100.0%
UPS	50,024,180	41,305,740	-17.4%	505,841,240	454,088,160	-10.2%	539,614,240	-9.6%
WESTERN AIR EXPRESS	598,000	415,000	-30.6%	3,853,500	3,419,480	-11.3%	4,126,480	-2.0%
OTHER CARGO	-	-	0.0%	-	-	0.0%	-	0.0%
<b>SUBTOTAL CARGO CARRIERS:</b>	<b>111,877,662</b>	<b>104,125,564</b>	<b>-6.9%</b>	<b>1,157,154,773</b>	<b>1,129,113,631</b>	<b>-2.4%</b>	<b>1,300,966,539</b>	<b>-2.5%</b>
<b>TOTAL LANDED WEIGHT</b>	<b>1,285,590,111</b>	<b>1,233,931,501</b>	<b>-4.0%</b>	<b>14,613,511,922</b>	<b>14,132,142,205</b>	<b>-3.3%</b>	<b>15,467,468,287</b>	<b>-2.3%</b>

**SALT LAKE CITY INTERNATIONAL AIRPORT  
CARGO ACTIVITY REPORT  
ELEVEN MONTHS ENDED NOVEMBER 2022**

	November 2021	November 2022	CHANGE	Year to date 2021	Year to date 2022	CHANGE	12 MO ROLLING Ending 11/2022	% CHANGE
<b>ENPLANED CARGO</b>								
<b>PASSENGER CARRIERS</b>								
ALASKA	6,461	7,663	18.60%	93,234	92,155	-1.16%	97,130	-4.51%
Horizon Air / Alaska	163	-	-100.00%	10,655	4,118	-61.35%	4,118	-64.81%
Skywest / Alaska	643	1,810	181.49%	27,966	20,002	-28.48%	21,918	-39.54%
AMERICAN	6,908	6,445	-6.70%	54,469	78,960	44.96%	83,239	41.41%
American Eagle/Republic	-	-	0.00%	140	-	-100.00%	-	-100.00%
Envoy Air (American)	-	-	0.00%	464	-	-100.00%	-	-100.00%
Mesa	-	-	0.00%	293	-	-100.00%	-	-100.00%
SkyWest (American)	1,621	-	-100.00%	12,697	6,022	-52.57%	6,722	-54.03%
DELTA	571,374	725,843	27.03%	6,470,062	7,591,236	17.33%	8,149,207	18.56%
KLM ROYAL DUTCH	-	-	0.00%	-	892,138	100.00%	892,138	100.00%
SOUTHWEST	380,522	504,600	32.61%	3,390,482	4,164,181	22.82%	4,412,720	24.05%
UNITED	12,147	12,576	3.53%	87,852	89,329	1.68%	102,560	5.88%
Others	9,257	17,203	85.84%	119,699	88,961	-25.68%	96,793	-26.81%
<b>CARGO CARRIERS</b>								
FEDEX EXPRESS*	8,914,790	8,509,161	-4.55%	104,874,995	90,691,540	-13.52%	101,119,163	-13.95%
GEM AIR	76,432	21,453	-71.93%	706,574	490,266	-30.61%	566,698	-31.34%
SWIFT AIR	-	1,795	100.00%	-	147,191	100.00%	147,191	100.00%
UPS	5,476,444	5,222,275	-4.64%	58,764,785	54,197,485	-7.77%	62,787,405	-7.67%
MISC CARGO	1,164,575	1,062,661	-8.75%	12,002,293	11,730,502	-2.26%	13,113,357	-0.33%
ABX AIR	-	2,909	100.00%	81,293	294,741	262.57%	339,625	317.78%
<b>TOTAL ENPLANED CARGO (LBS)</b>	<b>16,621,337</b>	<b>16,093,485</b>	<b>-3.18%</b>	<b>186,616,660</b>	<b>170,284,086</b>	<b>-8.75%</b>	<b>191,600,359</b>	<b>-8.92%</b>
<b>DEPLANED CARGO</b>								
<b>PASSENGER CARRIERS</b>								
ALASKA	10,656	19,319	81.30%	153,227	188,879	23.27%	203,823	31.28%
Horizon Air / Alaska	722	-	-100.00%	16,631	5,716	-65.63%	5,981	-67.06%
Skywest / Alaska	2,378	3,566	49.96%	75,371	27,674	-63.28%	32,222	-60.74%
AMERICAN	32,994	51,438	55.90%	328,966	420,469	27.82%	447,637	27.53%
American Eagle/Republic	-	-	0.00%	7	-	-100.00%	-	-100.00%
Envoy	350	-	-100.00%	1,994	9	-99.55%	309	-84.50%
Mesa (American)	-	-	0.00%	378	933	146.83%	933	146.83%
SkyWest (American)	1,360	-	-100.00%	11,174	4,654	-58.35%	5,681	-58.33%
DELTA	861,050	1,051,570	22.13%	9,530,468	11,782,522	23.63%	12,649,857	25.90%
KLM ROYAL DUTCH	-	-	0.00%	-	1,565,124	100.00%	1,565,124	100.00%
SOUTHWEST	430,568	378,649	-12.06%	4,416,478	3,960,212	-10.33%	4,372,773	-8.64%
UNITED	47,310	15,388	-67.47%	311,071	264,793	-14.88%	290,825	-12.07%
Others	24,457	28,457	16.36%	228,517	96,434	-57.80%	96,434	-70.06%
<b>CARGO CARRIERS</b>								
FEDEX EXPRESS*	8,650,512	8,119,316	-6.14%	95,109,728	90,031,285	-5.34%	100,099,344	-5.42%
GEM AIR	17,206	1,912	-88.89%	237,442	102,230	-56.95%	119,436	-53.84%
SWIFT AIR	-	72,216	100.00%	-	983,946	100.00%	983,946	100.00%
UPS	6,420,315	5,904,760	-8.03%	65,914,956	61,782,885	-6.27%	70,762,320	-6.04%
MISC CARGO	1,084,064	1,074,797	-0.85%	6,316,687	10,356,003	63.95%	11,885,617	69.98%
ABX AIR	-	31,392	100.00%	316,366	607,830	92.13%	692,935	119.03%
<b>TOTAL DEPLANED CARGO (LBS)</b>	<b>17,583,942</b>	<b>16,721,388</b>	<b>-4.91%</b>	<b>182,653,095</b>	<b>181,573,768</b>	<b>-0.59%</b>	<b>203,522,262</b>	<b>-0.48%</b>
<b>TOTAL CARGO LBS</b>	<b>34,205,279</b>	<b>32,814,873</b>	<b>-4.06%</b>	<b>369,269,755</b>	<b>351,857,854</b>	<b>-4.72%</b>	<b>395,122,621</b>	<b>-4.76%</b>

\*FEDEX EXPRESS includes mail



Salt Lake City  
Department of Airports

**COMPARISON OF ON TIME OPERATIONS**  
**September 2022**

**ARRIVALS**

Airport	Flights	% On Time	Rank
MSP MINNEAPOLIS-ST. PAUL INTL	9,896	90.2	1
<b>SLC SALT LAKE CITY INTL</b>	<b>9,258</b>	<b>88.9</b>	<b>2</b>
DTW DETROIT METRO WAYNE CNTY	10,270	88.2	3
IAH HOUSTON GEORGE BUSH	12,390	88.2	4
ATL HARTSFIELD-JACKSON ATLANTA INTL	26,495	87.5	5
SEA SEATTLE-TACOMA INTL	15,799	86.3	6
ORD CHICAGO O HARE	25,109	86.2	7
CLT CHARLOTTE DOUGLAS	17,393	86.1	8
IAD WASHINGTON DULLES	6,013	85.9	9
PHL PHILADELPHIA INTL	8,435	85.3	10
SFO SAN FRANCISCO INTL	1,047	84.7	11
LAX LOS ANGELES INTL	15,658	84.5	12
PHX PHOENIX SKY HARBOR INTL	13,007	82.7	13
DEN DENVER INTL	24,268	82.5	14
DFW DALLAS-FT. WORTH REGIONAL	23,459	82.2	15
BNA NASHVILLE INTL	7,632	81.0	16
DCA RONALD REAGAN NATIONAL	12,334	79.8	17
BWI BALTIMORE/WASHINGTON INTL	7,431	79.6	18
DAL DALLAS LOVE FIELD	5,654	79.4	19
LGA NEW YORK LAGUARDIA	14,284	79.4	20
SAN SAN DIEGO LINDBERGH FIELD	7,781	79.1	21
MDW CHICAGO MIDWAY	6,999	79.0	22
BOS BOSTON LOGAN INTL	11,694	78.5	23
EWL NEWARK LIBERTY INTERNATIONAL	10,897	77.0	24
JFK NEW YORK JFK INTL	11,556	76.4	25
LAS LAS VEGAS MCCARRAN INTL	15,596	75.1	26
FLL FT. LAUDERDALE	5,770	74.0	27
MIA MIAMI INTL	7,816	72.0	28
TPA TAMPA INTL	5,311	70.5	29
MCO ORLANDO INTL	11,253	68.4	30
<b>AVERAGES</b>	<b>12,017</b>		

**DEPARTURES**

Airport	Flights	% On Time	Rank
MSP MINNEAPOLIS-ST. PAUL INTL	9,897	90.3	1
DTW DETROIT METRO WAYNE CNTY	10,176	88.1	2
<b>SLC SALT LAKE CITY INTL</b>	<b>9,252</b>	<b>87.6</b>	<b>3</b>
IAD WASHINGTON DULLES	4,732	86.6	4
PHL PHILADELPHIA INTL	7,450	86.1	5
IAH HOUSTON GEORGE BUSH	10,212	86.0	6
ORD CHICAGO O HARE	22,251	85.4	7
ATL HARTSFIELD-JACKSON ATLANTA INTL	26,497	85.3	8
SEA SEATTLE-TACOMA INTL	15,793	85.1	9
CLT CHARLOTTE DOUGLAS	15,382	84.6	10
LAX LOS ANGELES INTL	15,648	84.4	11
SFO SAN FRANCISCO INTL	11,045	84.3	12
DCA RONALD REAGAN NATIONAL	11,866	82.3	13
LGA NEW YORK LAGUARDIA	14,197	81.6	14
BOS BOSTON LOGAN INTERNATIONAL	11,569	81.1	15
EWL NEWARK LIBERTY INTERNATIONAL	9,474	81.0	16
BNA NASHVILLE INTL	7,603	80.8	17
SAN SAN DIEGO LINDBERGH FIELD	7,781	80.4	18
PHX PHOENIX SKY HARBOR INTL	13,015	79.8	19
DFW DALLAS-FT. WORTH REGIONAL	23,452	79.4	20
JFK NEW YORK JFK INTL	11,555	77.9	21
DEN DENVER INTERNATIONAL	23,647	76.2	22
FLL FT. LAUDERDALE	5,767	75.4	23
LAS LAS VEGAS MCCARRAN INTL	15,595	73.5	24
MIA MIAMI INTL	7,813	72.4	25
TPA TAMPA INTERNATIONAL	5,305	72.1	26
DAL DALLAS LOVE FIELD	5,657	71.5	27
BWI BALTIMORE/WASHINGTON INTL	7,433	68.0	28
MCO ORLANDO INTL	11,249	67.8	29
MDW CHICAGO MIDWAY	7,003	65.6	30
<b>AVERAGES</b>	<b>11,944</b>		

**ON TIME ARRIVAL PERFORMANCE AT SLC**

By Carrier

Air Carrier	Flights	% On Time
DL DELTA	6,754	92.3%
UA UNITED	572	87.9%
AS ALASKA	294	81.6%
AA AMERICAN	331	81.0%
WN SOUTHWEST	906	77.6%
B6 JETBLUE	178	70.8%
F9 FRONTIER	103	65.0%
<b>AVERAGES</b>	<b>9,138</b>	<b>84.4%</b>

Source: DOT Air Travel Consumer Report