



Advisory Board
Meeting

October 8 2025

Agenda



Advisory Board Meeting

October 8, 2025

Pursuant to City Code 2.14.060(A) and Utah Code section 52-4-207(2), the Airport Advisory Board adopted a rule permitting electronic meetings for this Board, regardless of whether a quorum is present at an anchor location, so long as such meetings comply with the Open and Public Meetings Act.

To access the meeting please visit:

<https://saltlakecity.webex.com/saltlakecity/j.php?MTID=mod6c14e623607fb45ede045b132e43bb>



ADVISORY BOARD MEETING AGENDA

October 08, 2025

9:00 A.M.

CONSENT

- A. Minutes of the September 17, 2025, Meeting

DISCUSSION

- A. Director's Report –Bill Wyatt, Executive Director, SLCDA
- B. Airport Redevelopment Program (ARP) Update –Brian Stetson, ARP Program Director, SLCDA
- C. Review of the Airports Financial Position – Shaun Anderson, Airport Controller, SLCDA

MEDIA CLIPPINGS

Media Clippings – September 2025

INFORMATION ITEMS

Air Traffic Statistics – August 2025
Construction Report – October 2025

The next meeting will be held on **Wednesday, November 12 2025**, at 9:00 a.m. Meetings are usually held in the Board Room, located on the third level of the airport terminal and via Web-ex unless otherwise posted. People with disabilities may make requests for reasonable accommodation no later than 48 hours in advance in order to attend this Airport Advisory Board Meeting. Accommodations may include alternate formats, interpreters, and other auxiliary aids. This is an accessible facility. For questions or additional information, please contact Brett Christensen at 801-575-2042.



Advisory Board
Meeting

October 8, 2025

Minutes

SALT LAKE CITY DEPARTMENT OF AIRPORTS
MINUTES OF ADVISORY BOARD MEETING

September 17, 2025

Members' Present: John Bradshaw
 Craig Smith
 Arlyn Bradshaw
 Dirk Burton
 Hoang Nguyen
 Theresa Foxley*
 Jonathan Freedman*
 Tye Hoffman*
 Luz Escamillo*

Department of Airports: Brian Butler, Chief Financial Officer
 Brett Christensen, Administration
 Brian Stetson, ARP Program Director
 Brady Fredrickson, Director of Planning and Environmental
 Dave Korzep, Assistant Operations Director
 Eddie Clayson, Director of Maintenance
 Melyssa Trnavskis, Dir. of Design Construction & Management
 Shane Andreasen, Dir. Of Real Estate & Commercial Dev.
 Pete Higgins, Chief Operations Officer
 Nancy Volmer, Communication and Marketing Director
 Dean Warner, Acting IT Director
 Patty Nelis, Assistant Planning, Environmental Director
 Sean Nelson, Airport Planning/DBE Manager
 Todd Mitchell, SLCPD
 Megan DePaulis, City Attorney SLCDCA
 Paul Nielson, City Attorney SLCDCA
 Dana Cracroft, Joe Spinazze, J Robben, Paul Young, Ray Ruiz

Other: *Tracy, Austin, Ben Seaman, Lori, Matt*

John Bradshaw called the meeting, held in-person at the SLCDCA Admin Offices Board Room and via Web-Ex to order at 9:01 a.m. (* indicates the party attended virtually)

AGENDA

A. Minutes

A motion was made by John Boyer and seconded by Roger Boyer to approve the minutes of August 06, 2025 as presented. All votes were affirmative; motion passed.

B. Director's Report

Brian Butler, Chief Financial Officer, updated the Airport Advisory Board regarding current events.

- All time high enplanements and passenger in July 2025
- In October Spirit Airlines will cease operations in 11 airports, including Salt Lake City
- On October 28th we will open 10 more gates, a new Delta Sky Club and the AMEX Lounge
- Cargo Trade Mission September 25th

Luz Escamilla asked if Delta was the only airline that does international trips regarding cargo? Brian Butler explained we will be meeting with Korean Air while the group is in South Korea. We are in constant communication with other airlines. We are trying to advertise and actively recruiting other airlines and businesses to come to SLC.

C. Airport Redevelopment Program (ARP) Update – Brian Stetson, ARP Director, SLCDA

Brian Stetson, Airport Redevelopment Program (ARP) Director, presented an update on the ARP (presentation on file). Main points included were:

- Safety, Statistics, and Schedule
 - Trade hours for the Program overall; 16,976,467
 - Trade workers on site; 593 on site 09/5/2025
- Near Term Schedule Milestones
 - Concourse B East (Phase 4) Airline Turnover Level 2 Sector K
 - 9/9/25 SIDA Activation Early Gates
 - Delivery of Holdroom Seating Early Gates
- Airport Redevelopment Program Overall Budget
- Apron and Airfield
 - Continues Airfield P-501 Concrete Placement
 - Started Asphalt Shoulder Paving and at the Mid-Field Tunnel
- Concourse B East – Phase 3 / Ancillary Projects
 - Terminal Baggage Service Office Construction
 - United Airlines Temporary Operations Trailers
- Concourse 'B' East – 16 Gates (Phase 4)
 - Early Gate SIDA Doors Activated

- Early Gate PA System and PS DAS System Testing and Commissioning Started
- Project Pictures

D. Runway Extension Update –Brady Fredrickson, Director of Airport Planning & Capital Programming, SLCDA

Brady Fredrickson, Director of Planning, presented an update on the SLC Runway Extension

- Master Plan Recap
 - Areas identified that need improvement
 - Future infrastructure for parking, 2,000 stalls
 - Runway 14 32 will be decommissioned next year
- Runway Extension Update
 - The high elevation, high maximum mean temperature, and existing obstructions to the north present challenges to aircraft performance
- Runway Extension
 - There are some powerlines that run north, they are having the biggest impact on the runway length.
- Master Plan Capacity Analysis
 - For the Airbus A330 and A350 a 13,500 – 15,100’ runway allows for a range of destinations, including Seoul, Rio and nearly all of Europe.
- Field Length Analysis
 - Runway lengths above 14,500’ have little impact on aircraft range and load factors
 - Air Temperature, Brake Energy, Climb, and Obstacles are the limiting factors
- Air Temperature and Obstacle Analysis
 - 100.9F / 38.3C is being used in this study based on 95th percentile 10-year historical July METAR data for SLC
 - The airlines limit their seat capacity during the hot months
- Narrow Body
 - The new runway extension will help the narrow body aircraft tremendously, so it doesn’t take weight penalties
- Next Steps
 - October 20-24 Runway Extension Committee Meetings
 - November 6-7 Visit FAA Denver Offices
 - Fall/Winter 2025 Planning Complete by January 1st. Discussion with PacifiCorp / Powerlines
- Timeline
 - Phase 1 – NEPA Documentation. (2026-2027)
 - Phase 2 – Transmission Lines (2027-2028)
 - Phase 3- 2100 North Street Relocation (2029)

- Phase 4 – Runway / Taxiway Extension

Jonathan Freedman asked for clarity on the length of the runway, wondering why a longer runway wouldn't service more distant markets. Brady Fredrickson explained based on a 14,500 ft runway and the heat of the day it becomes aircraft performance that limits your range. During cold weather months you can get a heavier load factor.

Dirk Burton asked for progress update on the runway at South Valley. Fredrickson stated we are running into the same issues there as we are in Salt Lake. We need more critical aircraft before the FAA will start looking into funding a runway extension.

John Bradshaw adjourned the meeting at 10:30 am.

John Bradshaw, Chair

Date



Advisory Board
Meeting

October 8 2025

Discussion Items

AGENDA: DISCUSSION ITEM (A)

DATE: 08 October 2025

TO: Airport Advisory Board

FROM: Bill Wyatt, Executive Director

SUBJECT: Director's Report

Bill Wyatt, Executive Director, will present a monthly informational report to the Board, which may include:

1. ARP progress
2. Ground transportation update
3. Concessions and rental cars
4. Airport safety and security
5. Airport facilities and operations
6. General aviation
7. Passenger and airport users
8. Environmental matters
9. Financial condition
10. Legislative issues
11. Airlines
12. Communications and marketing

AGENDA: DISCUSSION ITEM (B)

DATE: 08 October 2025

TO: Airport Advisory Board

FROM: Bill Wyatt, Executive Director

SUBJECT: Airport Redevelopment Program Update

Brian Stetson, Program Director (ARP), will present an update on the SLC Airport Redevelopment Program (presentation on file).



AIRPORT REDEVELOPMENT PROGRAM

Status Update 10/08/2025



Safety, Statistics and Schedule



Safety Statistics

Numbers for Last Month

- **OSHA National Average**
 - **Lost Time Rate 1.50 Recordable Rate 2.40**
- **HDJV Metrics**
 - **15,012,734 Total Trade Hours worked**
 - **Lost Time Rate 0.19 Recordable Rate 2.0**

Trade Hours for the Program Overall

- **ARP Metrics (HDJV+AOJV)**
 - **17,174,228 Total Trade Hours worked**

Trade Workers on Site

- **561 Trade Workers (on Site 09/26/2025)**

Schedule Status and Critical Path

- **NCP Phase 4 – Early Gate Substantial Completion and Opening Day**
- **NCP Phase 4 – Completion of Overhead and In-Wall Mechanical, Electrical & Plumbing - Remaining Gates**
- **NCP Phase 4 – Installation of Building Systems & Equipment - Remaining Gates**
- **NCP Phase 4 – Completion of Civil Paving & Installation of Passenger Boarding Bridges - Remaining Gates**
- **Overall Program is on Schedule**

Near Term Schedule Milestones



Target Date	Current Date	Description
09/15/25	Completed	Concourse B East (Phase 4) - Ready for Aircraft Fit Tests Early Gates
09/24/25	Completed	Concourse B East (Phase 4) - SWA Move In to Operational Spaces Early Gates
10/06/25	10/06/25	Concourse B East (Phase 4) - Delivery of Holdroom Seating Early Gates
10/07/25	10/07/25	Concourse B East (Phase 4) - State Inspection of Moving Walks Early Gates
10/20/25	10/20/25	Concourse B East (Phase 4) - Substantial Completion Early Gates
10/22/25	10/22/25	Concourse B East (Phase 4) - Permanent Power Available Remaining Gates
10/22/25	10/22/25	Concourse B East (Phase 4) - Start Flush & Fill Hydronic Piping Remaining Gates
10/28/25	10/28/25	Early Gate Opening of 10 Gates (5 Gates Conc. B West / 5 Gates Conc. B East)
11/17/25	11/17/25	Ancillary - Airport Command Center (ACC) - Shared Access

Airport Redevelopment Program Overall Budget



	Budget 09/25/25 FOC	Committed Aug-25	Commitments Sep-25	Revised Commitments	Earned to Date	Estimate at Completion
Closed TRP CGMPs 1,2,2A-2D,3-7,9,9A,10,11,11A &12	\$2,682,828,849	\$2,682,828,849	\$0	\$2,682,828,849	\$2,682,828,849	\$2,682,828,849
Closed NCP CGMPs 13,14,15,16,17,18 & 19	\$487,852,444	\$487,852,444	\$0	\$487,852,444	\$487,852,444	\$487,852,444
CGMP 2E & F CMAR General Conditions/Services	\$99,720,169	\$99,720,169	\$0	\$99,720,169	\$94,945,005	\$99,720,169
CGMP 2G CMAR Preconstruction Phase 4	\$51,154,016	\$51,154,015	\$0	\$51,154,015	\$23,674,050	\$51,154,016
CGMP 11B Apron Paving & Fueling	\$71,808,317	\$71,808,317	\$0	\$71,808,317	\$44,947,918	\$71,808,317
CGMP 19A Phase 3 NCP/Tunnel Buildout	\$376,231,542	\$376,231,542	\$0	\$376,231,542	\$369,367,470	\$376,231,542
CGMP 20 NCP Phase 2 Airfield Paving & Jet Fuel	\$78,939,329	\$78,476,418	\$0	\$78,476,418	\$66,672,786	\$78,939,329
CGMP 22 & 22F Phase 4 Concourse	\$589,444,784	\$589,444,784	\$0	\$589,444,784	\$411,228,402	\$589,444,784
CGMP 24 Phase 4 Airfield	\$56,185,409	\$56,185,409	\$0	\$56,185,409	\$43,469,571	\$56,185,409
Total Program Construction	\$4,494,164,859	\$4,493,701,947	\$0	\$4,493,701,947	\$4,224,986,495	\$4,494,164,859
TRP Owner Procurement	\$5,869,161	\$5,869,161	\$0	\$5,869,161	\$5,869,160	\$5,869,161
NCP Owner Procurement	\$3,126,328	\$3,126,328	\$0	\$3,126,328	\$1,860,182	\$3,126,328
Security Checkpoint Equipment	\$12,751,472	\$11,751,472	\$0	\$11,751,472	\$7,848,061	\$12,751,472
Automated Security Exit Door Equipment	\$917,430	\$914,453	\$0	\$914,453	\$914,453	\$917,430
TRP Soft Cost	\$352,631,983	\$352,631,983	\$0	\$352,631,983	\$352,601,249	\$352,631,983
NCP Soft Cost Phases 1&3	\$164,496,040	\$163,531,863	\$412,313	\$163,944,176	\$159,823,780	\$164,496,040
NCP Soft Cost Phase 4	\$88,608,124	\$75,369,332	18,276	\$75,387,608	\$50,445,298	\$88,608,124
Total Program Soft Cost	\$628,400,538	\$613,194,592	\$430,589	\$613,625,181	\$579,362,183	\$628,400,538
ARP Owner Reserve	\$12,407,665	\$0	\$0	\$0	\$0	\$12,407,665
Total ARP Program Budget	\$5,134,973,062	\$5,106,896,539	\$430,589	\$5,107,327,128	\$4,804,348,678	\$5,134,973,062

Airfield

- **Continued Wire Pulling & Light Can Installations**
- **Completed all Airfield P-501 Concrete Placement planned for 2025 Paving Season**
- **Started Asphalt Shoulder Paving and Asphalt Millings Placement**

Concourse 'B' East - Phase 3 / Ancillary Projects



Airport Command and Control Space – Concourse 'B'

- **Started Communication Room Cabinet Installation**
- **Horizontal Cable Pulling progressing**
- **Concrete Floor Polishing and Wall Acrovyn Installation complete**

Terminal BSO Construction

- **Started In-Wall and Overhead MEP Installations**

Baggage Handling Expansion

- **Interior CMU and Metal Stud Framing in progress**
- **New Conveyor and Catwalk Installations underway in Advance of Future Cut-Overs**

Concourse 'B' East – 16 Gates (Phase 4)



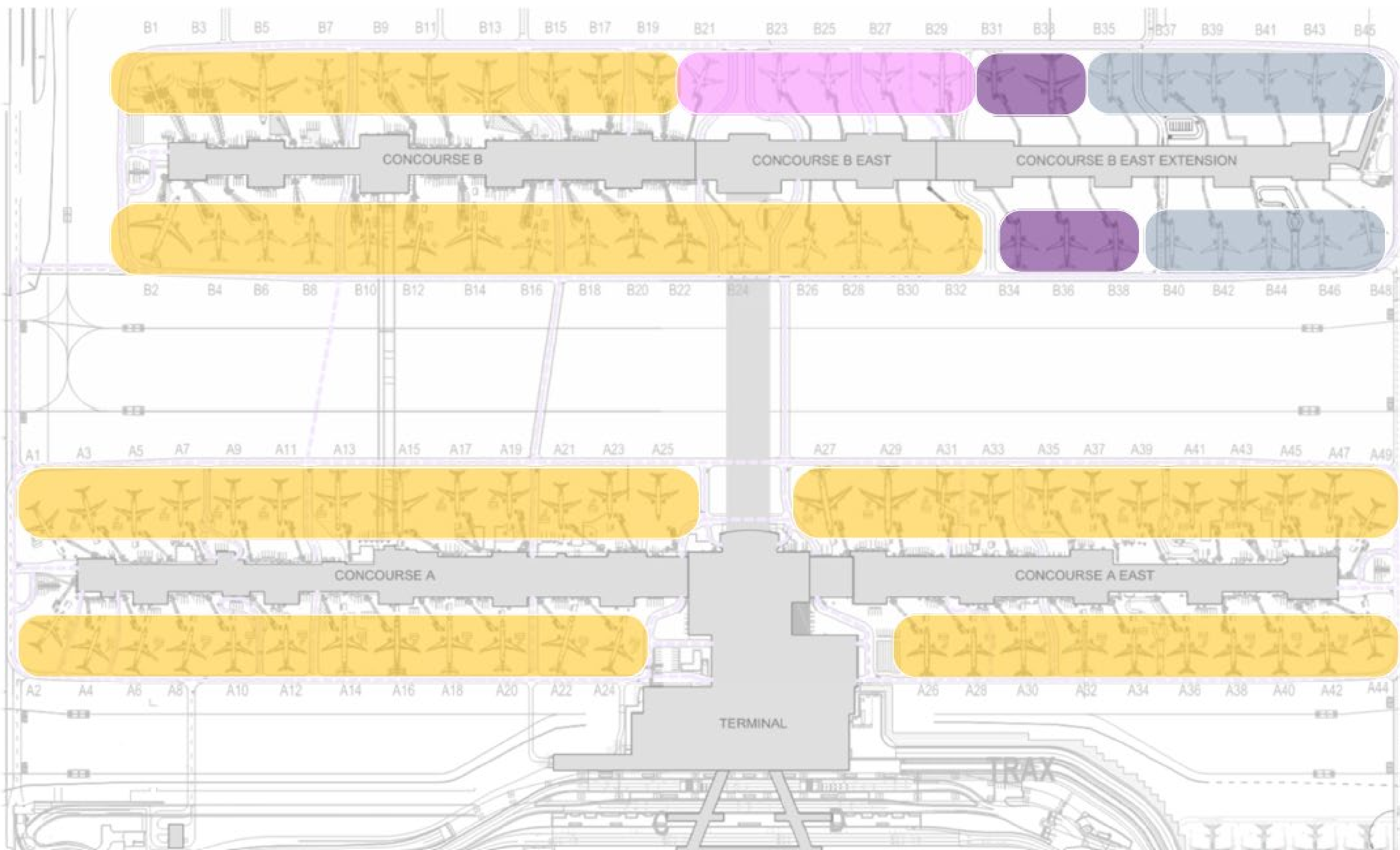
Concourse 'B' East 16 Gates (Phase 4)

- Completed Early Gate Fit Tests. All Gates Ready for Operation**
- Early Gate Level 1 Back of House Spaces Turned Over for Shared Access**
- Early Gate Level 1 Operational Space Activated for Southwest**
- Early Gate Elevator and Moving Walkway State Inspections Completed**
- Early Gate Holdroom Entertainment Complete and Operational**
- Early Gate PA System and PS DAS System Complete and Operational**
- Early Gate FIDs and Advertising Monument Sign Assembly started**
- Early Gate Final Clean, Final Paint Touch Up and Punchlist Work**
- Remaining Gate Level 2 Ceiling Grid and Lighting Installations started**
- Remaining Gate Public Restroom Terrazzo Grinding and Polishing started**

Overall Phase 3 and Phase 4 Phased Delivery



- 73 CURRENT GATES OPEN
- 05 Phase 3 GATES OPEN OCT OF 2025
- 05 Phase 4 GATES OPEN OCT OF 2025
- 11 Phase 4 GATES OPEN OCT OF 2026



Concourse B East – 07/31/2025



Concourse B East – 07/31/2025



Concourse B East – Early Gate Fit Test



Concourse 'B' Level 2 Early Gate – Interior Photos



Area K Info Hub



Southwest Gate Stanchions



Phase 4 to Phase 3 Transition Looking West

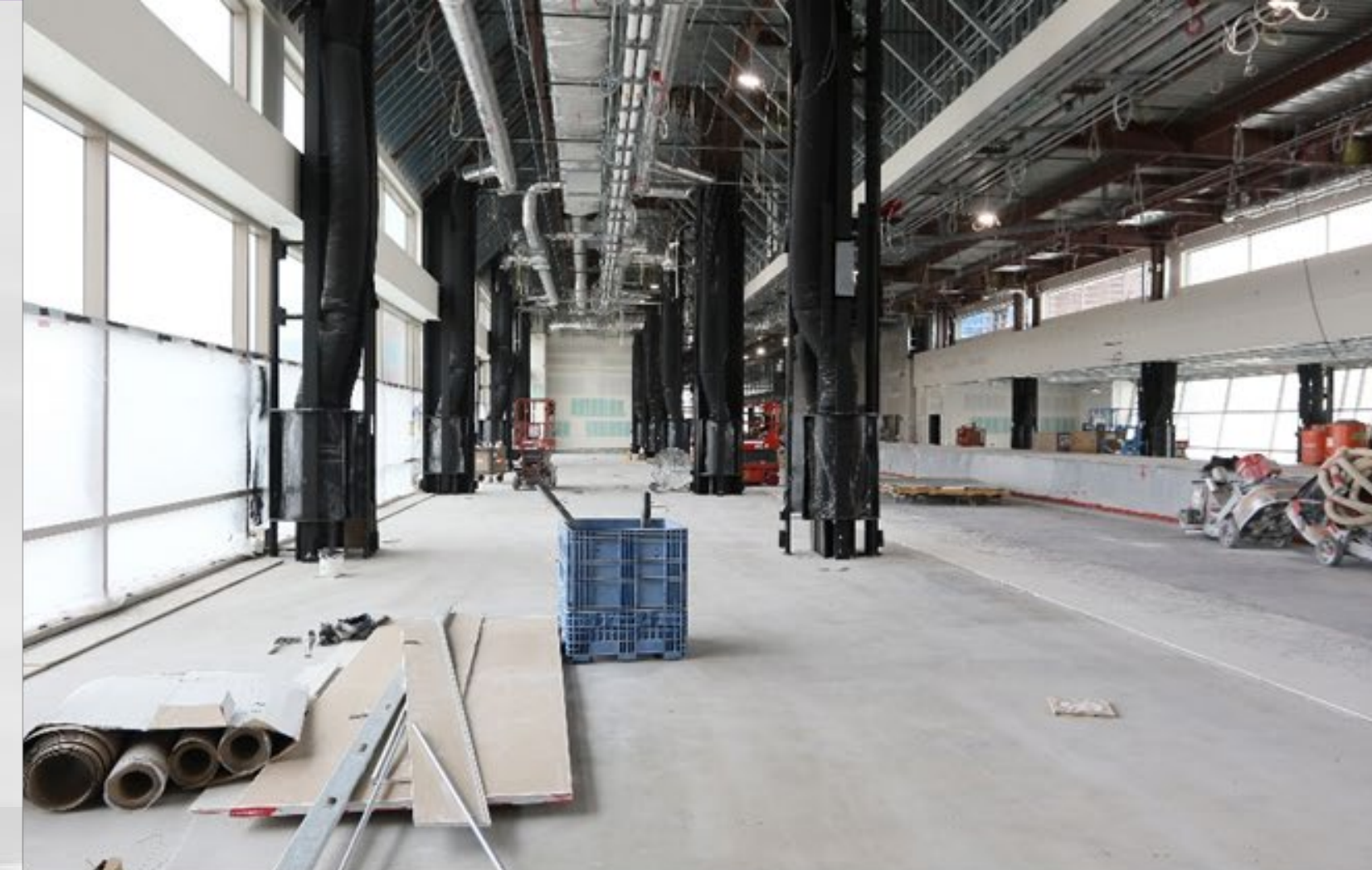


Area L Circulation Looking West

Concourse 'B' Level 2 Remaining Gate – Interior Photos



Area P Bus Shelter



Area M Holdroom



Area N L3 United Club



Area N Circulation Looking East

Concourse 'B' East – Exterior Photos



Area N Exterior



South Bag Transfer Pier Steel



Area P Bus Shelter Glazing Framing – East Face



Area P Bus Shelter Exterior Masonry – West Face



TW G Paving Prep



TW G Paving Prep



TL 3E Asphalt Prep



TL 3E Asphalt Paving

Terminal Baggage Handling Expansion



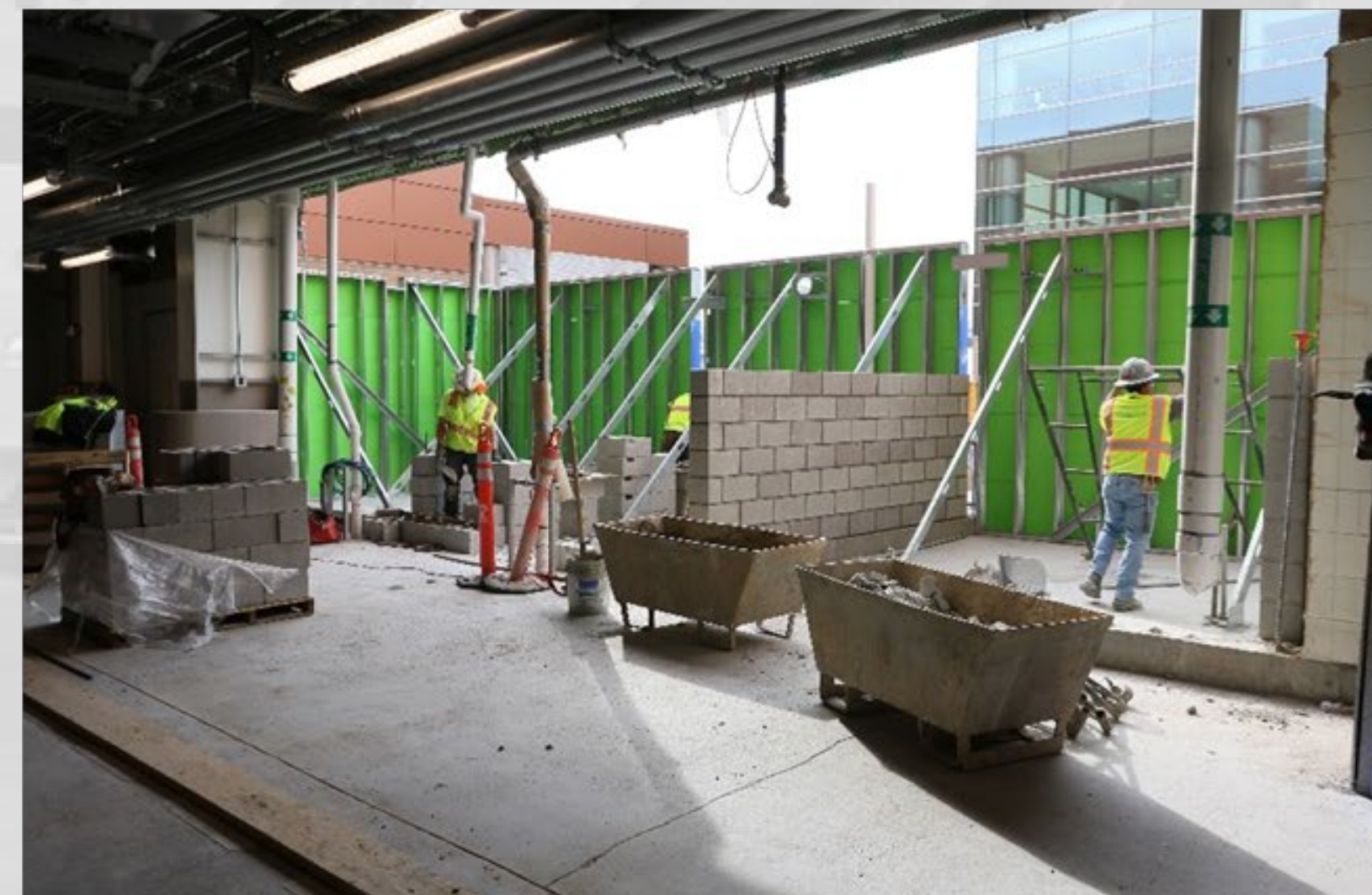
Gate A27 Area Final Slab Prep



Interior Masonry for CBIS



A-Nub Building Expansion Exterior Sheathing



A-Nub Building Expansion Interior Masonry

Airline Lounges



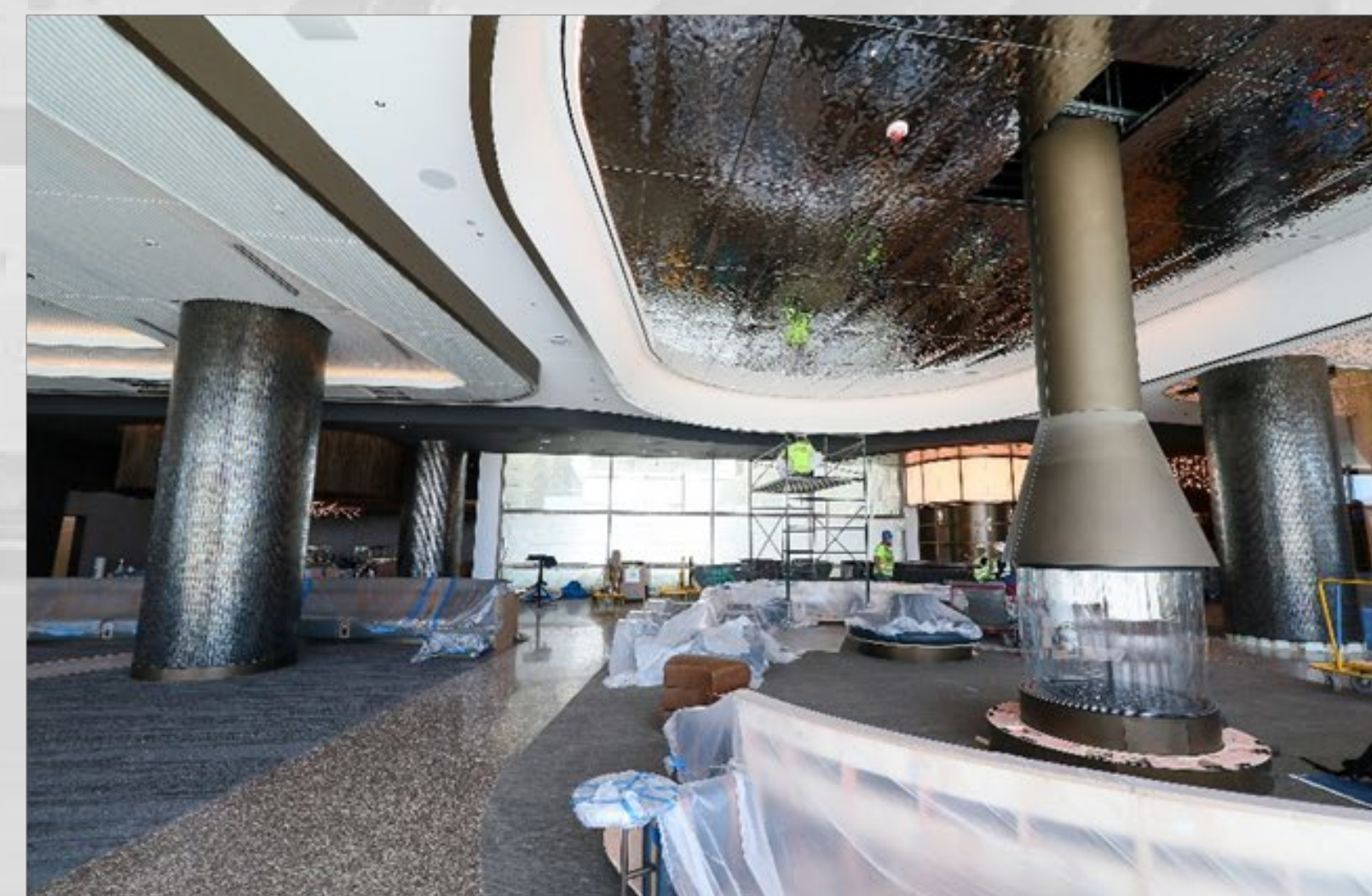
AmEx Lounge



AmEx Lounge



Delta SkyClub



Delta SkyClub

Ancillary and Concessions



Bulletin 510 Terminal L2 Bag Service Office Relocation



Bulletin 211 Concourse B L1 Delta Airport Control Center



Aubergine Kitchen



Moab Brewery

AGENDA: DISCUSSION ITEM (C)
DATE: 08 October 2025
TO: Airport Advisory Board
FROM: Bill Wyatt, Executive Director
SUBJECT: Review of Financial Position

Shaun Anderson, Airport Controller - (presentation on file).

Salt Lake City Department of Airports

**Review of Financial Position
as of June 30, 2025**

Presentation to Airport Advisory Board

October 8, 2025

FY 2025 Financial & Operational Highlights

Passenger traffic increased 0.4% over FY 2024

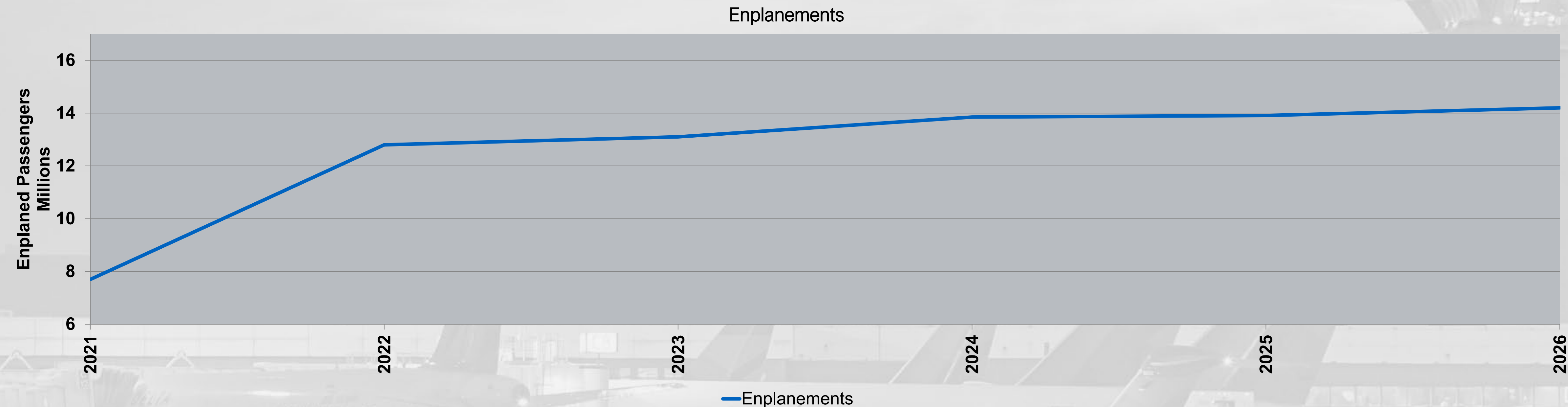
Landed weights increased 1.8% compared to FY 2024

Operating revenue increased 43.0% over FY 2024

Operating expenses under budget by 5.6%

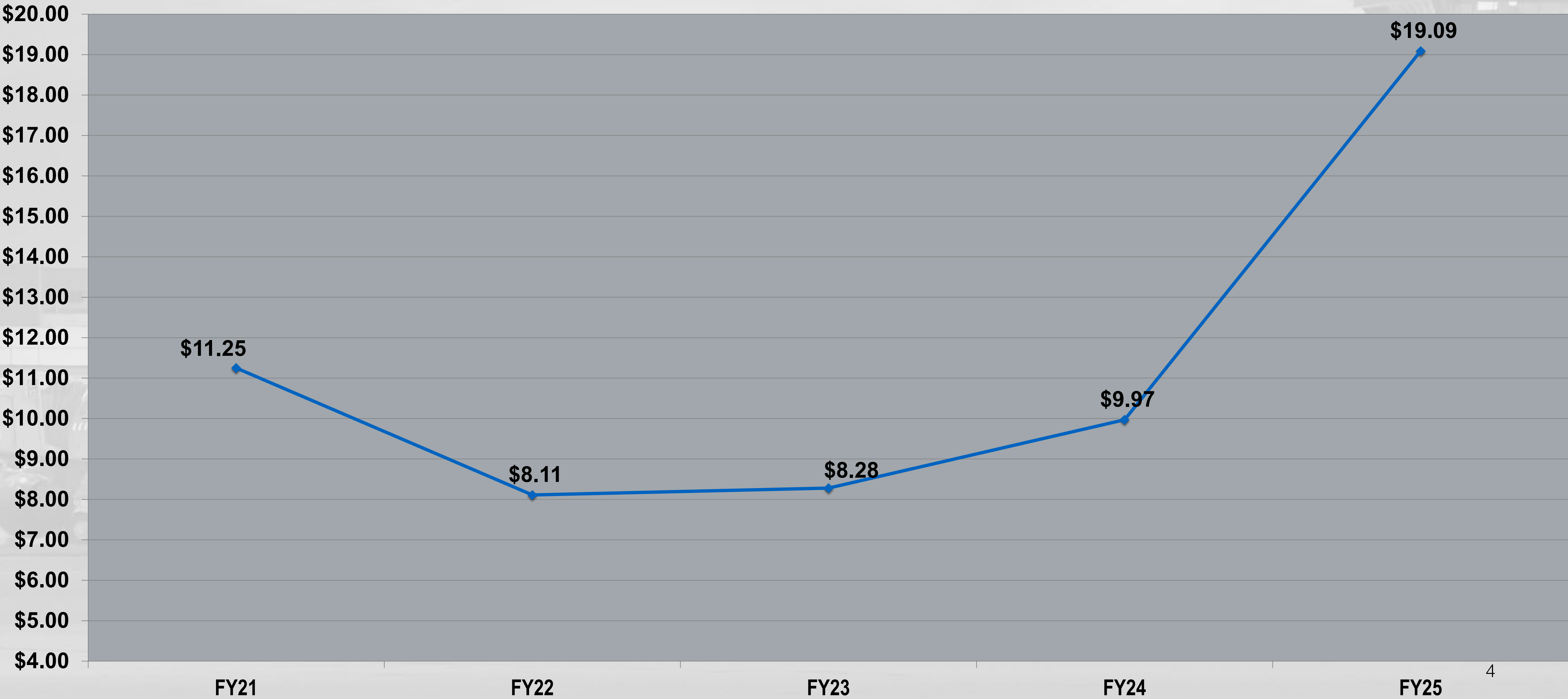
Terminal Redevelopment Program (TRP) and North Concourse Program (NCP) spent to date \$4.7 B

Enplaned Passenger Traffic



Annual Enplanements						
	Actual 2021	Actual 2022	Actual 2023	Actual 2024	Actual 2025	Budget 2026
Enplanements (000s)	7,710	12,802	13,143	13,850	13,906	14,198
Annual Change	(23.6%)	66.0%	2.7%	5.4%	0.4%	2.1%

CPE Ten Year History - SLC



Budget Comparison



Description	FY 2025 Budget	FY 2025 Actual	Favorable / (Unfavorable)
Operating Revenue	\$471,440,000	\$ 486,206,000	\$ 14,766,000
Airline Revenue Sharing	(20,188,000)	(19,188,000)	1,000,000
Operating Expense	<u>(218,839,000)</u>	<u>(206,624,000)</u>	<u>12,215,000</u>
Net Operating Income	\$ 232,413,000	\$ 260,394,000	\$ 27,981,000

Dash Cash on Hand



Fund	Balance as of 6/30/2023 (in millions)	Balance as of 6/30/2024 (in millions)	Balance as of 6/30/2025 (in millions)
<u>Unrestricted</u>			
Surplus Fund *	\$133	\$187	\$52
Revenue Fund *	17	131	278
<u>Restricted</u>			
PFC Fund	7	6	6
CFC Fund	1	1	14
Debt Service Reserve and Capitalized Interest Funds	337	379	396
Operating and Maintenance Reserve Fund*	33	37	41
<u>Renewal and Replacement Fund*</u>	<u>5</u>	<u>5</u>	<u>5</u>
Total	\$533	\$746	\$792
Funds Available for Operations*	\$189	\$360	\$376
Days cash on hand	401	713	664

Source: Salt Lake City Department of Airports.

*Funds available for operations include Surplus Fund, Revenue Fund, Operating and Maintenance Reserve Fund and Renewal and Replacement Fund

Airline Use Agreement Rates and Charges



FY25 Due or (Owe) Calculation	Amount
LANDING FEES	
Due	\$81,045,100
Less Net Billed	(79,454,300)
Net Owed from Airlines	\$1,590,800
TERMINAL RENTS	
Due	\$ 191,950,400
Less Net Billed	(194,768,400)
Net Owed to Airlines	\$(2,818,000)
<i>Net Owed to Airlines for the FY25 Reconciliation</i>	<i>\$(1,227,300)*</i>

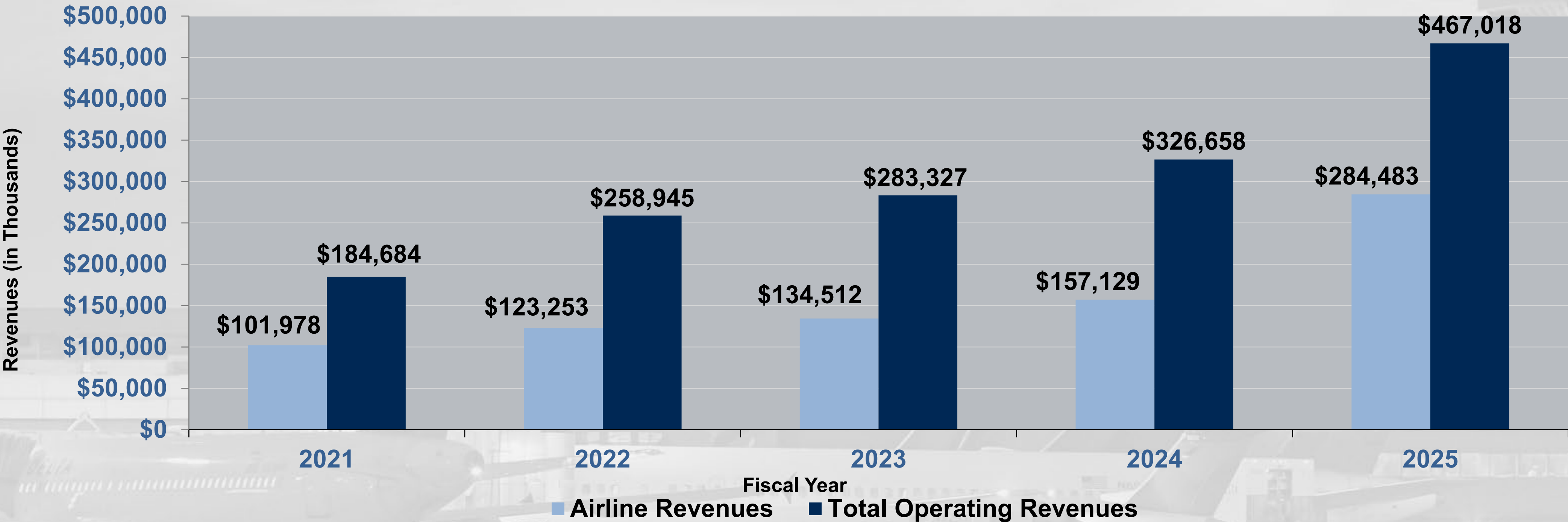
* Amount owed from Airlines will be rolled forward into the FY27 rates.

Comparison of Actual Airline Revenue



Revenue Category	FY 2023 Actual	FY 2024 Actual	FY 2025 Actual
Landing Fees	\$ 53,496,700	\$ 59,816,700	\$ 84,904,600
Terminal Rents	86,486,900	97,946,900	205,687,000
Airline Revenue Sharing	(13,844,400)	(15,296,900)	(19,188,300)
Support Buildings	4,434,100	6,753,400	6,592,800
Passenger Boarding Bridge	1,704,400	1,944,600	2,203,800
Fuel Farm	1,811,400	2,731,500	3,640,000
Remain overnight	<u>422,900</u>	<u>335,800</u>	<u>641,800</u>
TOTAL AIRLINE REVENUE:	\$ 134,512,000	\$ 154,232,000	\$ 284,481,700

Airline Share of Total Revenue



	2021	2022	2023	2024	2025
Airline Share of Total Revenue	55.2%	47.6%	47.5%	47.2%	60.9%

Source: Salt Lake City Department of Airports.

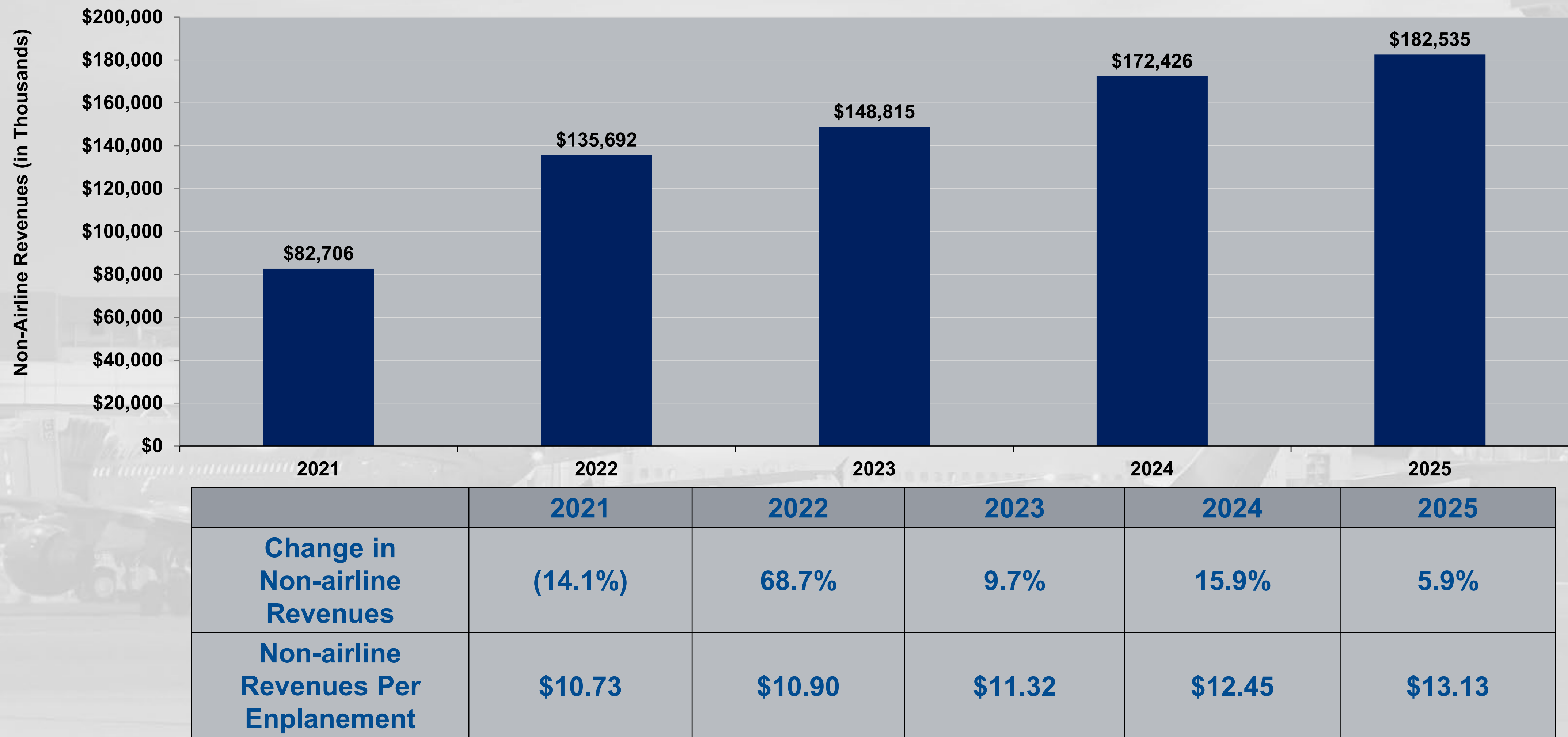
Comparison of Actual Non-Airline Revenue



Revenue Category	FY 2023 Actual	FY 2024 Actual	FY 2025 Actual
Parking	\$ 60,140,300	\$ 68,596,400	\$ 73,095,600
Rental Cars	36,053,200	39,723,100	41,541,700
Food and Beverage	8,796,300*	16,162,100	16,749,400
Building Rent	9,409,000	10,119,100	11,032,600
News and Gift	3,319,000*	9,806,000	10,636,300
Ground Transportation	7,709,700	8,976,300	9,532,100
Other	<u>23,387,500</u>	<u>19,043,000</u>	<u>19,947,300</u>
TOTAL NON-AIRLINE REVENUE:	\$ 148,815,000	\$ 172,426,000	\$ 182,535,000

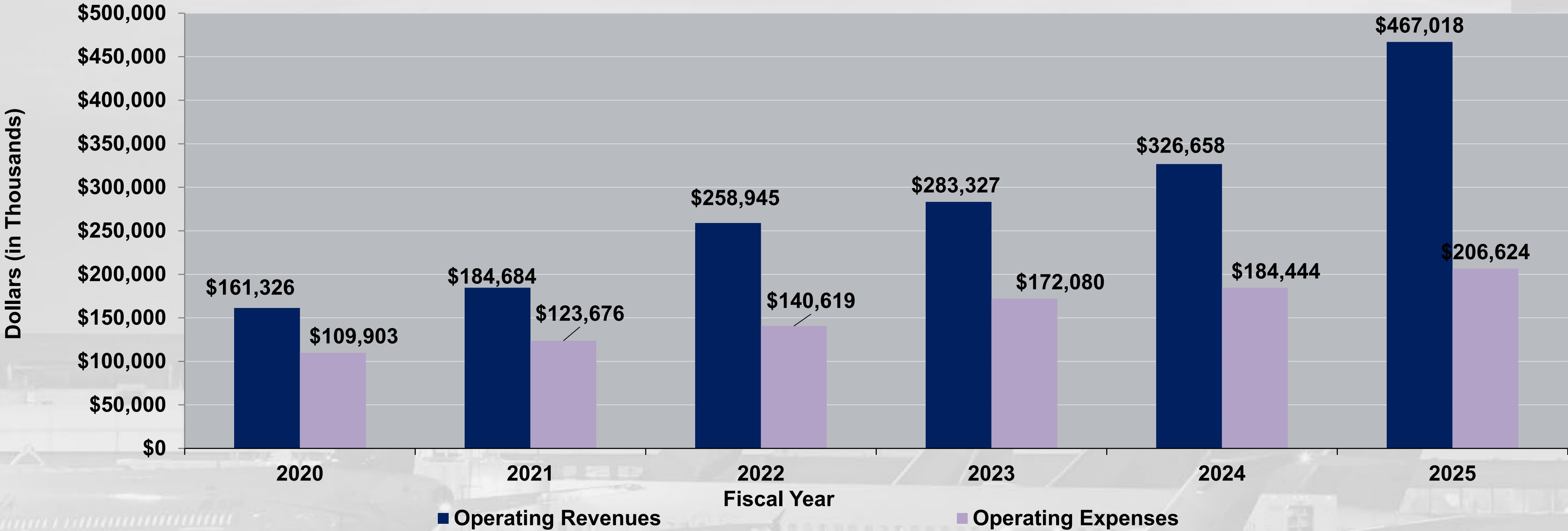
*In FY 2023 there was \$5.1 million in ARPA Concession Relief for Food and Beverage and \$5.6 million for News and Gifts.

Non-airline revenues have increased 120.7% since FY 2021 and 34.5% since FY 2022



Source: Salt Lake City Department of Airports.

Revenue growth has outpaced growth in expenses and enplanements



	2020	2021	2022	2023	2024	2025	Cumulative Growth
Enplanements (000s)	10,096	7,710	12,802	13,143	13,850	13,906	37.7%
Revenue Per Enplanement	\$15.98	\$23.95	\$20.23	\$21.56	\$23.59	\$33.58	110.1%
Expenses Per Enplanement	\$10.89	\$16.04	\$10.98	\$13.09	\$13.32	\$14.86	36.5%
Net Revenues Per Enplanement	\$5.09	\$7.91	\$9.24	\$8.46	\$10.27	\$18.73	268.0%

Source: Salt Lake City Department of Airports.

Comparison of Actual Operating Expense

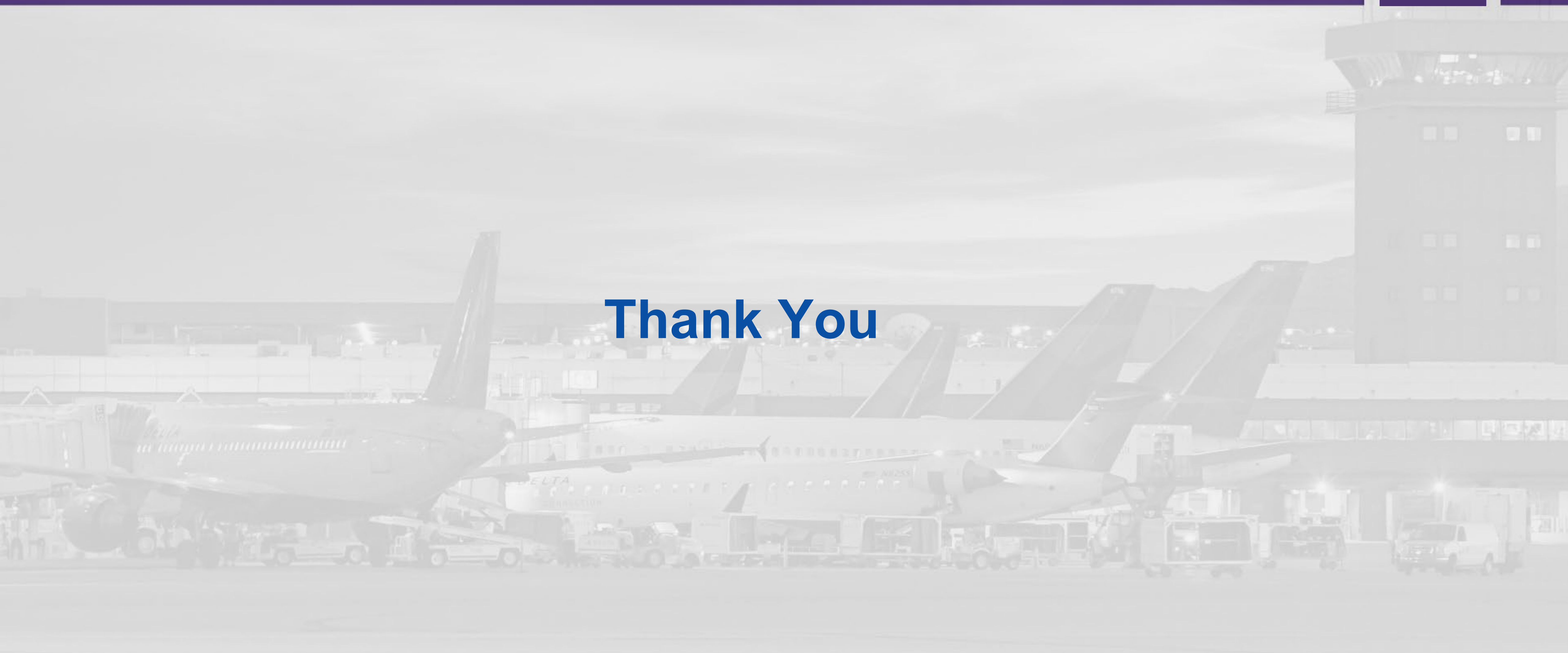


Expense Category	FY 2023 Actual	FY 2024 Actual	FY 2025 Actual
Salaries & Benefits	\$ 58,989,600	\$ 66,723,600	\$ 77,986,500
Materials & Supplies	20,147,800	17,819,700	19,253,500
Maintenance Contracts	22,170,800	27,158,100	30,600,100
Services	30,906,200	30,087,400	31,445,600
Utilities	8,553,200	9,713,800	8,993,300
Inter-Governmental	24,235,400	26,722,900	30,318,900
Insurance/Other	<u>7,078,400</u>	<u>6,218,000</u>	<u>8,025,800</u>
TOTAL OPERATING EXPENSE:	\$ 172,080,400	\$ 184,443,500	\$ 206,623,700

Questions



Thank You





Advisory Board Meeting

October 8, 2025

Media Clippings

<https://slcairport.com/assets/pdfDocuments/AABoard/Oct2025ClippingPacket.pdf>

Compiled by the Communication & Marketing Dept.



Advisory Board
Meeting

October 08 2025

Information



**SALT LAKE CITY INTERNATIONAL AIRPORT
AIR TRAFFIC STATISTICS AND ACTIVITY REPORT
EIGHT MONTHS ENDED AUGUST 2025**

	August 2025	CHANGE	Year to date 2025	CHANGE	12 MO ROLLING Ending 08/2025	CHANGE
PASSENGERS						
DOMESTIC						
Enplaned - Local	819,906	1.95%	6,451,451	3.23%	9,446,125	3.25%
Enplaned - Connections	419,454	0.88%	2,995,391	-8.15%	4,515,263	-5.09%
Less International	-84,407		-509,547		-729,563	
Enplaned	1,154,953	-0.48%	8,937,295	-1.24%	13,231,825	0.00%
Deplaned - Local	825,621	-0.99%	6,609,700	2.46%	9,717,134	2.81%
Deplaned - Connection	419,454	0.88%	2,995,391	-8.15%	4,515,263	-5.09%
Less International	-69,269		-512,299		-722,110	
Deplaned	1,175,806	-1.01%	9,092,792	-1.51%	13,510,287	-0.15%
TOTAL DOMESTIC	2,330,759	-0.74%	18,030,087	-1.37%	26,742,112	-0.08%
INTERNATIONAL						
Enplaned	84,407	41.79%	509,547	10.38%	729,563	8.24%
Deplaned	69,269	11.99%	512,299	6.70%	722,110	6.43%
TOTAL INTERNATIONAL	153,676	26.60%	1,021,846	8.50%	1,451,673	7.33%
TOTAL PASSENGERS	2,484,435	0.60%	19,051,933	-0.89%	28,193,785	0.28%
LANDED WEIGHT						
Air Carriers	1,384,580,615	1.49%	10,804,366,802	2.07%	15,974,147,607	2.29%
Cargo Carriers	73,956,461	-17.24%	611,797,217	-10.01%	976,557,651	-5.57%
TOTAL LANDED WEIGHT (LBS)	1,458,537,076	0.34%	11,416,164,019	1.34%	16,950,705,258	1.80%
MAIL						
Enplaned	3,468,355	154.64%	25,124,700	248.96%	33,628,706	235.98%
Deplaned	1,484,967	73.65%	10,166,324	159.98%	14,894,603	174.44%
TOTAL MAIL (LBS)	4,953,322	123.40%	35,291,024	217.64%	48,523,309	214.34%
CARGO						
Enplaned	11,754,349	-11.66%	90,663,897	-12.44%	141,820,331	-11.99%
Deplaned	13,610,155	-7.73%	101,095,860	-10.06%	159,379,156	-8.00%
TOTAL CARGO (LBS)	25,364,504	-9.59%	191,759,757	-11.20%	301,199,487	-9.92%
MAIL & CARGO						
Enplaned	5,877	-11.66%	45,332	-12.44%	70,910	-11.99%
Deplaned	6,805	-7.73%	50,548	-10.06%	79,690	-8.00%
TOTAL MAIL & CARGO (TONS)	12,682	-9.60%	95,880	-11.20%	150,600	-9.92%
AIRCRAFT OPERATIONS						
Passenger Aircraft	22,054	3.34%	172,388	3.47%	253,520	3.39%
All-Cargo Aircraft	976	-25.38%	8,042	-21.80%	13,250	-16.16%
General Aviation	5,292	-5.99%	42,825	1.74%	62,828	0.57%
Military	247	-8.86%	2,049	1.44%	3,054	-2.15%
TOTAL AIRCRAFT OPERATIONS	28,569	0.07%	225,304	1.95%	332,652	1.85%

**SALT LAKE CITY INTERNATIONAL AIRPORT
PASSENGER TRAFFIC REPORT
EIGHT MONTHS ENDED AUGUST 2025**

	August 2024	August 2025	% CHANGE	Year to date 2024	Year to date 2025	% CHANGE	12 MO ROLLING Ending 08/2025	% CHANGE
ENPLANED PASSENGERS								
AEROMEXICO	5,449	4,003	-26.5%	37,258	36,284	-2.6%	54,489	36.3%
AIR CANADA	1,892	781	-58.7%	5,351	4,590	-14.2%	7,211	-10.4%
ALASKA	18,563	19,402	4.5%	123,680	126,128	2.0%	182,718	-0.2%
Horizon Air / Alaska	-	2,313	100.0%	12	4,442	36916.7%	5,321	44241.7%
Skywest / Alaska	10,685	10,569	-1.1%	78,525	84,267	7.3%	114,851	12.9%
AMERICAN	48,124	59,572	23.8%	442,431	439,168	-0.7%	625,624	0.1%
Envoy Air	76	442	481.6%	3,247	12,568	287.1%	18,835	376.1%
American/Mesa Air	-	-	0.0%	-	-	0.0%	-	0.0%
SkyWest (American)	9,553	4,346	-54.5%	69,740	75,015	7.6%	110,825	11.5%
AVELO	-	-	0.0%	-	2,893	100.0%	4,546	100.0%
DELTA	713,874	717,267	0.5%	5,449,734	5,439,611	-0.2%	8,108,464	1.0%
SkyWest (Delta Connection)	141,092	166,420	18.0%	1,082,986	1,150,259	6.2%	1,672,684	4.0%
EUROWINGS DISCOVER	-	-	0.0%	-	-	0.0%	-	-100.0%
FRONTIER	40,936	37,360	-8.7%	296,552	305,914	3.2%	481,560	17.4%
HAWAIIAN	4,950	4,761	-3.8%	18,136	40,401	122.8%	62,744	246.0%
JETBLUE	12,378	7,553	-39.0%	164,815	59,329	-64.0%	98,139	-61.6%
KLM ROYAL DUTCH AIRLINES	4,909	5,128	4.5%	24,308	31,014	27.6%	39,880	21.9%
SOUTHWEST	124,858	116,249	-6.9%	1,041,552	996,469	-4.3%	1,471,040	-3.3%
SPIRIT	24,235	7,029	-71.0%	157,900	48,306	-69.4%	87,825	-61.7%
SUN COUNTRY	1,785	2,898	62.4%	8,842	12,567	42.1%	14,839	57.4%
UNITED	42,026	54,956	30.8%	374,729	422,280	12.7%	579,348	10.0%
Mesa Airlines (United Express)	1,261	937	-25.7%	10,049	6,766	-32.7%	12,127	-33.4%
SkyWest (United Express)	13,251	16,079	21.3%	119,999	143,195	19.3%	202,508	9.1%
WestJet	-	1,134	100.0%	-	5,072	100.0%	5,072	100.0%
Charters	105	161	53.3%	1,065	304	-71.5%	738	-43.3%
West Coast Charters	-	0	0.0%	-	0	0.0%	0	0.0%
TOTAL ENPLANED PASSENGERS	1,220,002	1,239,360	1.6%	9,510,911	9,446,842	-0.7%	13,961,388	0.4%
AeroMexico	9,882	7,195	-27.2%	65,790	63,397	-3.6%	88,609	27.5%
AIR CANADA	1,833	1,018	-44.5%	5,056	4,848	-4.1%	7,318	-12.1%
ALASKA AIR	18,862	21,088	11.8%	120,060	127,609	6.3%	183,689	1.6%
Horizon Air / Alaska	-	2,259	100.0%	1	4,344	434300.0%	5,221	522000.0%
Skywest / Alaska	11,097	10,743	-3.2%	80,585	80,004	-0.7%	112,082	8.3%
AMERICAN	47,926	59,417	24.0%	439,017	440,303	0.3%	626,200	0.8%
Envoy Air (American)	76	447	488.2%	3,625	12,148	235.1%	18,450	319.9%
Mesa Air	-	-	0.0%	-	-	0.0%	-	0.0%
SkyWest (American)	9,346	4,036	-56.8%	69,889	72,028	3.1%	108,574	-16.7%
AVELO	-	-	0.0%	-	2,856	100.0%	4,596	100.0%
DELTA	734,171	718,577	-2.1%	5,612,633	5,592,289	-0.4%	8,353,869	1.3%
SkyWest (Delta Connection)	139,931	169,471	21.1%	1,074,807	1,147,089	6.7%	1,670,316	4.1%
EUROWINGS DISCOVER	-	-	0.0%	-	-	0.0%	-	-100.0%
FRONTIER	47,602	38,416	-19.3%	314,472	303,519	-3.5%	484,105	12.9%
HAWAIIAN	5,787	5,597	-3.3%	18,763	44,208	135.6%	66,384	253.8%
JETBLUE	12,961	7,673	-40.8%	166,261	60,191	-63.8%	98,835	-61.4%
KLM ROYAL DUTCH AIRLINES	5,123	5,241	2.3%	25,616	30,202	17.9%	39,495	13.1%
SOUTHWEST	122,894	112,708	-8.3%	1,042,269	985,559	-5.4%	1,460,097	-4.1%
SPIRIT	24,004	7,159	-70.2%	159,271	47,537	-70.2%	88,514	-61.7%
SUN COUNTRY	1,913	2,830	47.9%	8,896	12,892	44.9%	15,741	76.7%
UNITED	41,367	52,471	26.8%	371,903	421,163	13.2%	580,563	10.6%
Mesa Airlines / United Express	1,243	1,012	-18.6%	10,381	7,435	-28.4%	13,240	-29.3%
SkyWest (United Express)	13,505	16,554	22.6%	121,146	141,643	16.9%	202,235	7.7%
WestJet	-	1,044	100.0%	-	3,462	100.0%	3,462	100.0%
Charters	105	119	13.3%	1,406	365	-74.0%	802	-55.3%
Air North Charter & Training	-	-	0.0%	-	-	0.0%	-	0.0%
Air Wisconsin	-	-	0.0%	-	36	100.0%	36	100.0%
Allegiant Air	104	119	14.4%	1,042	327	-68.6%	761	-46.6%
Ameristar - AJI	-	-	0.0%	33	-	-100.0%	-	-100.0%
Boutique Air	-	-	0.0%	-	-	0.0%	-	0.0%
D&D Aviation	-	-	0.0%	-	-	0.0%	-	0.0%
Gem Air	-	-	0.0%	-	-	0.0%	-	0.0%
Global Crossing	-	-	0.0%	-	-	0.0%	-	0.0%
Kalitta Air	1	-	-100.0%	11	2	-81.8%	5	-72.2%
Key Lime Air	-	-	0.0%	320	-	-100.0%	-	-100.0%
Kitty Hawk Charters	-	-	0.0%	-	-	0.0%	-	0.0%
Miami Air Int'l	-	-	0.0%	-	-	0.0%	-	0.0%
Republic	-	-	0.0%	-	-	0.0%	-	0.0%
Sierra Pacific	-	-	0.0%	-	-	0.0%	-	0.0%
Sun Country	-	-	0.0%	-	-	0.0%	-	0.0%
Swift Air	-	-	0.0%	-	-	0.0%	-	0.0%
West Coast Charters	-	-	0.0%	-	-	0.0%	-	0.0%
TOTAL DEPLANED PASSENGERS	1,249,628	1,245,075	-0.4%	9,711,847	9,605,091	-1.1%	14,232,397	0.2%
TOTAL PASSENGERS*	2,469,630	2,484,435	0.6%	19,222,758	19,051,933	-0.9%	28,193,785	0.3%
INTERNATIONAL - ENPLANED								
AEROMEXICO	5,449	4,003	-26.5%	37,258	36,284	-2.6%	54,489	36.3%
AIR CANADA	1,892	781	-58.7%	5,351	4,590	-14.2%	7,211	-10.4%
DELTA	38,224	63,545	66.2%	337,656	373,696	10.7%	533,265	2.2%
SkyWest (Delta Connection)	9,056	9,816	8.4%	57,076	58,891	3.2%	89,646	28.6%
EUROWINGS DISCOVER	-	-	0.0%	-	-	0.0%	-	-100.0%
KLM ROYAL DUTCH AIRLINES	4,909	5,128	4.5%	24,308	31,014	27.6%	39,880	21.9%
WESTJET	-	1,134	100.0%	-	5,072	100.0%	5,072	100.0%
Charters	-	-	0.0%	-	-	0.0%	-	0.0%
TOTAL ENPLANED INTERNATIONAL	59,530	84,407	41.8%	461,649	509,547	10.4%	729,563	8.2%
AEROMEXICO	9,882	7,195	-27.2%	65,790	63,397	-3.6%	88,609	27.5%
AIR CANADA	1,833	1,018	-44.5%	5,056	4,848	-4.1%	7,318	-12.1%
DELTA	35,801	44,958	25.6%	328,652	351,286	6.9%	492,652	-0.6%
SkyWest (Delta Connection)	9,216	9,813	6.5%	54,998	59,104	7.5%	90,574	32.5%
EUROWINGS DISCOVER	-	-	0.0%	-	-	0.0%	-	-100.0%
KLM ROYAL DUTCH AIRLINES	5,123	5,241	2.3%	25,616	30,202	17.9%	39,495	13.1%
WESTJET	-	1,044	100.0%	-	3,462	100.0%	3,462	100.0%
Charters	-	-	0.0%	-	-	0.0%	-	0.0%
TOTAL DEPLANED INTERNATIONAL	61,855	69,269	12.0%	480,112	512,299	6.7%	722,110	6.4%
TOTAL INTERNATIONAL PASSENGERS	121,385	153,676	26.6%	941,761	1,021,846	8.5%	1,451,673	7.3%

*Includes International

SALT LAKE CITY INTERNATIONAL AIRPORT
EIGHT MONTHS ENDED AUGUST 2025
Based on Total Enplanements

MARKET SHARE

	August 2024	MARKET SHARE	August 2025	MARKET SHARE	Year to date 2024	MARKET SHARE	Year to date 2025	MARKET SHARE	12 MO ROLLING Ending 08/2024	12 MO ROLLING Ending 08/2025	MARKET SHARE
AEROMEXICO	5,449	0.45%	4,003	0.32%	37,258	0.39%	36,284	0.38%	39,985	54,489	0.39%
ALASKA	29,248	2.40%	32,284	2.60%	202,217	2.13%	214,837	2.27%	284,923	302,890	2.17%
AMERICAN	57,753	4.73%	64,360	5.19%	515,418	5.42%	526,751	5.58%	728,228	755,284	5.41%
AVELO	-	0.00%	-	0.00%	-	0.00%	2,893	0.03%	-	4,546	0.03%
DELTA	854,966	70.08%	883,687	71.30%	6,532,720	68.69%	6,589,870	69.76%	9,634,657	9,781,148	70.06%
EUROWINGS DISCOVER	-	0.00%	-	0.00%	-	0.00%	-	0.00%	1,919	-	0.00%
FRONTIER	40,936	3.36%	37,360	3.01%	296,552	3.12%	305,914	3.24%	410,089	481,560	3.45%
HAWAIIAN	4,950	0.41%	4,761	0.38%	18,136	0.19%	40,401	0.43%	18,136	62,744	0.45%
JETBLUE	12,378	1.01%	7,553	0.61%	164,815	1.73%	59,329	0.63%	255,274	98,139	0.70%
KLM ROYAL DUTCH	4,909	0.40%	5,128	0.41%	24,308	0.26%	31,014	0.33%	32,702	39,880	0.29%
SOUTHWEST	124,858	10.23%	116,249	9.38%	1,041,552	10.95%	996,469	10.55%	1,521,495	1,471,040	10.54%
SPIRIT	24,235	1.99%	7,029	0.57%	157,900	1.66%	48,306	0.51%	229,350	87,825	0.63%
SUN COUNTRY	1,785	0.15%	2,898	0.23%	8,842	0.09%	12,567	0.13%	9,428	14,839	0.11%
UNITED	56,538	4.63%	71,972	5.81%	504,777	5.31%	572,241	6.06%	730,709	793,983	5.69%
WESTJET	-	0.00%	1,134	0.09%	-	0.00%	5,072	0.05%	-	5,072	0.04%
Charters	105	0.01%	161	0.01%	1,065	0.01%	304	0.00%	1,301	738	0.01%
TOTAL ENPLANEMENTS	1,220,002	100%	1,239,360	100%	9,510,911	100%	9,446,842	100%	13,906,242	13,961,388	100%

PERCENT CHANGE YOY

	August 2024	August 2025	PERCENT CHANGE	YTD 2024	YTD 2025	PERCENT CHANGE	12 MO ROLLING Ending 08/2024	12 MO ROLLING Ending 08/2025	PERCENT CHANGE
AEROMEXICO	5,449	4,003	-26.54%	37,258	36,284	-2.61%	39,985	54,489	36.27%
ALASKA	29,248	32,284	10.38%	202,217	214,837	6.24%	284,923	302,890	6.31%
AMERICAN	57,753	64,360	11.44%	515,418	526,751	2.20%	728,228	755,284	3.72%
AVELO	-	-	#DIV/0!	-	2,893	100.00%	-	4,546	100.00%
DELTA	854,966	883,687	3.36%	6,532,720	6,589,870	0.87%	9,634,657	9,781,148	1.52%
FRONTIER	40,936	37,360	-8.74%	296,552	305,914	3.16%	410,089	481,560	17.43%
HAWAIIAN	4,950	4,761	100.00%	18,136	40,401	100.00%	18,136	62,744	100.00%
JETBLUE	12,378	7,553	-38.98%	164,815	59,329	-64.00%	255,274	98,139	-61.56%
KLM ROYAL DUTCH	4,909	5,128	0.00%	24,308	31,014	0.00%	32,702	39,880	21.95%
SOUTHWEST	124,858	116,249	-6.90%	1,041,552	996,469	-4.33%	1,521,495	1,471,040	-3.32%
SPIRIT	24,235	7,029	-71.00%	157,900	48,306	-69.41%	229,350	87,825	-61.71%
SUN COUNTRY	1,785	2,898	62.35%	8,842	12,567	42.13%	9,428	14,839	57.39%
UNITED	56,538	71,972	27.30%	504,777	572,241	13.37%	730,709	793,983	8.66%
WESTJET	-	1,134	100.00%	-	5,072	100.00%	-	5,072	100.00%
Charters	105	161	53.33%	1,065	304	-71.46%	1,301	738	-43.27%
TOTAL ENPLANEMENTS	1,220,002	1,239,360	1.6%	9,510,911	9,446,842	-0.7%	13,906,242	13,961,388	0.4%

SALT LAKE CITY INTERNATIONAL AIRPORT
LANDING ACTIVITY
EIGHT MONTHS ENDED AUGUST 2025

	August 2024	August 2025	CHANGE	Year to date 2024	Year to date 2025	CHANGE	12 MO ROLLING Ending 08/2025	% CHANGE
TOTAL NUMBER OF LANDINGS								
SCHEDULED CARRIERS								
AEROMEXICO	45	27	-40.0%	302	275	-8.9%	394	18.7%
AIR CANADA	17	10	-41.2%	48	48	0.0%	79	8.2%
ALASKA	123	142	15.4%	839	860	2.5%	1,263	0.1%
Horizon Air / Alaska	-	34	100.0%	1	64	6300.0%	76	7500.0%
Skywest / Alaska	158	151	-4.4%	1,240	1,261	1.7%	1,744	8.8%
AMERICAN	280	374	33.6%	2,666	2,681	0.6%	3,841	1.2%
Mesa Air (American)	-	-	0.0%	-	-	0.0%	-	0.0%
Envoy Air (American)	1	6	500.0%	50	180	260.0%	275	336.5%
SkyWest (American)	147	75	-49.0%	1,109	1,270	14.5%	1,907	17.1%
AVELO	-	8	100.0%	-	42	100.0%	62	100.0%
DELTA	4,969	4,906	-1.3%	37,790	39,072	3.4%	58,318	3.5%
SkyWest (Delta Connection)	2,332	2,832	21.4%	17,989	19,909	10.7%	28,735	6.5%
EUROWINGS DISCOVER	-	-	0.0%	-	-	0.0%	-	-100.0%
FRONTIER	314	222	-29.3%	1,983	1,821	-8.2%	2,945	10.2%
HAWAIIAN	31	31	0.0%	108	242	124.1%	368	240.7%
JETBLUE	94	54	-42.6%	1,259	445	-64.7%	715	-63.3%
KLM ROYAL DUTCH AIRLINES	13	14	7.7%	64	80	25.0%	104	16.9%
SOUTHWEST	1,004	932	-7.2%	8,177	7,950	-2.8%	11,769	-4.1%
SPIRIT	162	51	-68.5%	1,001	356	-64.4%	616	-57.7%
SUN COUNTRY	19	24	26.3%	95	127	33.7%	161	38.8%
UNITED	327	396	21.1%	2,811	3,206	14.1%	4,457	12.4%
Mesa / United Express	17	15	-11.8%	147	109	-25.9%	192	-28.6%
Republic Airways Holdings	-	-	0.0%	-	-	0.0%	-	0.0%
SkyWest (United Express)	228	264	15.8%	2,026	2,380	17.5%	3,407	8.3%
WESTJET	-	9	100.0%	-	42	100.0%	42	100.0%
SUBTOTAL SCHEDULED CARRIERS:	10,281	10,577	2.9%	79,705	82,420	3.4%	121,470	2.8%
CHARTER CARRIERS								
AIR WISCONSIN	-	-	0.0%	-	1	100.0%	1	100.0%
ALLEGiant AIR	1	2	100.0%	13	7	-46.2%	11	-31.3%
BOMBARDIER BUSINESS JETS	166	200	20.5%	1,556	1,691	8.7%	2,340	26.6%
BOUTIQUE AIR	-	-	0.0%	-	-	0.0%	-	0.0%
DELTA PRIVATE JETS	-	-	0.0%	-	-	0.0%	-	0.0%
EXECUTIVE JET MANAGEMENT	-	-	0.0%	-	-	0.0%	-	0.0%
FLIGHT OPTIONS	-	-	0.0%	-	-	0.0%	-	0.0%
KALITTA CHARTERS	3	2	-33.3%	23	13	-43.5%	15	-46.4%
KEYLIME AIR	-	-	0.0%	3	3	0.0%	4	33.3%
NETJETS	220	246	11.8%	1,960	2,058	5.0%	2,918	17.6%
SIERRA PACIFIC AIRLINES	-	1	100.0%	4	1	-75.0%	1	-75.0%
SWIFT AIR	-	-	0.0%	-	-	0.0%	-	0.0%
SUN COUNTRY	-	-	0.0%	-	-	0.0%	-	0.0%
XOJET	-	-	0.0%	47	-	-100.0%	-	-100.0%
OTHER CHARTER	-	-	0.0%	1	-	-100.0%	-	-100.0%
SUBTOTAL CHARTER CARRIERS:	390	451	15.6%	3,607	3,774	4.6%	5,290	19.3%
CARGO CARRIERS								
21 AIR LLC	27	21	-22.2%	157	169	7.6%	270	72.0%
ABX AIR INC	-	-	0.0%	10	-	-100.0%	1	-92.3%
AIRNET 11 LLC	5	7	40.0%	51	46	-9.8%	66	-22.4%
ALPINE AVIATION	176	165	-6.3%	1,452	1,295	-10.8%	1,973	-12.8%
AMERIFLIGHT	23	-	-100.0%	177	45	-74.6%	131	-54.8%
AMERIJET INTERTIONAL	-	-	0.0%	27	-	-100.0%	-	-100.0%
CORPORATE AIR (BILLINGS)	140	47	-66.4%	1,051	377	-64.1%	888	-43.2%
EMPIRE	17	17	0.0%	139	137	-1.4%	205	-2.4%
FEDERAL EXPRESS	127	83	-34.6%	1,012	688	-32.0%	1,114	-28.2%
GEM AIR	33	30	-9.1%	249	244	-2.0%	378	-0.3%
GLOBAL CROSSING AIRLINES	-	-	0.0%	-	3	100.0%	3	50.0%
NORTHERN AIR CARGO	-	-	0.0%	17	-	-100.0%	-	-100.0%
SWIFT AIR	-	-	0.0%	5	-	-100.0%	-	-100.0%
UPS	106	117	10.4%	783	1,017	29.9%	1,596	28.9%
WESTERN AIR EXPRESS	-	-	0.0%	-	-	0.0%	-	0.0%
OTHER CARGO	-	-	0.0%	3	-	-100.0%	-	-100.0%
SUBTOTAL CARGO CARRIERS:	654	487	-25.5%	5,133	4,021	-21.7%	6,625	-16.4%
TOTAL LANDINGS	11,325	11,515	1.7%	88,445	90,215	2.0%	133,385	2.2%
TOTAL LANDED WEIGHT								
SCHEDULED CARRIERS								
AEROMEXICO	6,466,500	3,880,000	-40.0%	41,687,748	40,501,298	-2.8%	57,950,798	30.1%
AIR CANADA	2,618,000	1,540,000	-41.2%	7,392,000	7,392,000	0.0%	12,166,000	8.2%
ALASKA	19,058,400	21,899,800	14.9%	129,225,500	132,750,100	2.7%	194,290,300	-0.1%
Horizon Air / Alaska	-	2,548,538	100.0%	74,957	4,797,248	6300.0%	5,696,732	7500.0%
Skywest / Alaska	11,843,206	11,318,507	-4.4%	92,946,680	94,520,777	1.7%	130,725,008	8.8%
AMERICAN	47,241,906	60,791,182	28.7%	440,336,740	435,549,138	-1.1%	625,709,572	0.0%
Envoy Air (American)	74,950	449,700	500.0%	3,747,500	13,472,520	259.5%	20,582,210	335.9%
SkyWest (American)	10,492,950	5,478,150	-47.8%	78,890,150	89,343,250	13.3%	133,588,400	15.6%
AVELO	-	1,024,000	100.0%	-	5,522,400	100.0%	8,082,400	100.0%
DELTA	780,900,608	777,371,160	-0.5%	5,945,861,826	6,122,561,643	3.0%	9,157,044,429	3.4%

**SALT LAKE CITY INTERNATIONAL AIRPORT
LANDING ACTIVITY
EIGHT MONTHS ENDED AUGUST 2025**

	August 2024	August 2025	CHANGE	Year to date 2024	Year to date 2025	CHANGE	12 MO ROLLING Ending 08/2025	% CHANGE
SkyWest (Delta Connection)	173,455,402	207,467,102	19.6%	1,343,496,860	1,458,546,910	8.6%	2,109,133,794	5.3%
EUROWINGS DISCOVER	-	-	0.0%	-	-	0.0%	-	-100.0%
FRONTIER	46,748,924	35,852,807	-23.3%	301,322,674	285,395,433	-5.3%	455,378,825	12.4%
HAWAIIAN	5,412,786	5,412,786	0.0%	18,857,448	44,517,884	136.1%	70,821,502	275.6%
JETBLUE	13,245,752	7,386,700	-44.2%	179,099,546	62,156,979	-65.3%	100,612,593	-63.8%
KLM ROYAL DUTCH AIRLINES	6,108,258	6,746,078	10.4%	30,071,424	37,765,566	25.6%	49,126,327	20.3%
SOUTHWEST	139,553,400	130,965,400	-6.2%	1,131,345,500	1,126,161,300	-0.5%	1,656,343,100	-2.4%
SPIRIT	23,418,800	8,068,888	-65.5%	159,595,146	55,284,091	-65.4%	92,352,795	-58.8%
SUN COUNTRY	2,779,700	3,511,200	26.3%	13,898,500	18,572,000	33.6%	23,546,200	38.7%
UNITED	46,510,500	57,419,400	23.5%	403,135,400	465,963,500	15.6%	643,908,400	11.6%
Mesa / United Express	1,274,150	1,124,250	-11.8%	11,018,200	8,169,550	-25.9%	14,390,400	-28.6%
Republic Airways Holdings	-	-	0.0%	-	-	0.0%	-	0.0%
SkyWest (United Express)	14,719,657	19,157,529	30.1%	134,798,787	168,998,879	25.4%	236,715,648	12.4%
WESTJET	-	1,231,200	100.0%	-	5,770,800	100.0%	5,770,800	100.0%
SUBTOTAL SCHEDULED CARRIERS:	1,351,923,849	1,370,644,377	1.4%	10,466,802,586	10,683,713,266	2.1%	15,803,936,233	2.2%
CHARTER CARRIERS								
AIR WISCONSIN	-	-	0.0%	-	47,000	100.0%	47,000	100.0%
ALLEGIAN AIR	145,505	291,010	100.0%	1,844,162	996,487	-46.0%	1,578,507	-30.5%
AMERISTAR	-	-	0.0%	107,000	-	-100.0%	-	-100.0%
BOEING COMMERCIAL AIRPLANE	-	-	0.0%	-	-	0.0%	-	0.0%
BOMBARDIER	5,426,427	6,575,746	21.2%	54,395,718	56,951,923	4.7%	79,596,214	21.9%
BOUTIQUE AIR	-	-	0.0%	-	-	0.0%	-	0.0%
DELTA PRIVATE JETS	-	-	0.0%	-	-	0.0%	-	0.0%
EXECUTIVE JET MANAGEMENT	-	-	0.0%	-	-	0.0%	-	0.0%
FLIGHT OPTIONS	-	-	0.0%	-	-	0.0%	-	0.0%
KALITTA CHARTERS	45,900	42,620	-7.1%	615,620	228,240	-62.9%	266,640	-61.5%
KEYLIME AIR	-	-	0.0%	119,026	95,172	-20.0%	138,823	16.6%
MIAMI AIR	-	-	0.0%	-	-	0.0%	-	0.0%
NETJETS	6,672,288	6,944,182	4.1%	59,717,224	62,109,836	4.0%	88,359,312	18.1%
SIERRA PACIFIC	-	110,000	100.0%	440,000	110,000	-75.0%	110,000	-75.0%
SUN COUNTRY	-	-	0.0%	-	-	0.0%	-	0.0%
SWIFT AIR	-	-	0.0%	-	-	0.0%	-	0.0%
VIRGIN AMERICA	-	-	0.0%	-	-	0.0%	-	0.0%
XOJET	-	-	0.0%	1,494,600	-	-100.0%	-	-100.0%
OTHER CHARTER	-	-	0.0%	-	-	0.0%	-	0.0%
SUBTOTAL CHARTER CARRIERS:	12,290,120	13,963,558	13.6%	118,733,350	120,538,658	1.5%	170,096,496	17.0%
CARGO CARRIERS								
21 AIR LLC	8,651,000	6,792,000	-21.5%	49,342,000	54,026,000	9.5%	86,823,000	76.0%
ABX AIR INC	-	-	0.0%	2,790,000	-	-100.0%	283,000	-92.2%
AIRNET 11	77,200	109,200	41.5%	788,700	713,600	-9.5%	1,023,800	-22.1%
ALPINE AVIATION	2,490,400	2,383,900	-4.3%	20,018,000	18,724,600	-6.5%	28,454,800	-9.4%
AMERIFLIGHT	370,300	-	-100.0%	2,847,900	732,100	-74.3%	2,106,700	-54.5%
AMERIJET INTERNATIONAL	-	-	0.0%	7,344,000	-	-100.0%	-	-100.0%
AMERISTAR	-	-	0.0%	163,400	-	-100.0%	-	-100.0%
ATLAS AIR	-	-	0.0%	-	-	0.0%	-	-100.0%
CORPORATE AIR (BILLINGS)	1,190,000	571,200	-52.0%	8,933,500	3,921,600	-56.1%	8,265,100	-37.8%
EMPIRE	833,231	837,641	0.5%	6,725,506	6,750,401	0.4%	9,999,535	-0.8%
FEDEX EXPRESS	43,169,600	26,762,200	-38.0%	334,612,400	221,981,700	-33.7%	362,980,700	-29.3%
GEM AIR	280,500	255,000	-9.1%	2,116,500	2,074,000	-2.0%	3,213,000	0.5%
GLOBAL CROSSING AIRLINES	-	-	0.0%	-	475,094	100.0%	475,094	42.7%
KALITTA AIR LLC	-	-	0.0%	652,000	-	-100.0%	-	-100.0%
NORTHERN AIR CARGO	-	-	0.0%	2,057,000	-	-100.0%	-	-100.0%
SWIFT AIR	-	-	0.0%	720,000	-	-100.0%	-	-100.0%
UPS	32,301,600	36,218,000	12.1%	240,433,220	302,513,000	25.8%	473,047,800	24.8%
WESTERN AIR EXPRESS	-	-	0.0%	-	-	0.0%	-	0.0%
OTHER CARGO	-	-	0.0%	-	-	0.0%	-	0.0%
SUBTOTAL CARGO CARRIERS:	89,363,831	73,929,141	-17.3%	679,544,126	611,912,095	-10.0%	976,672,529	-5.9%
TOTAL LANDED WEIGHT	1,453,577,800	1,458,537,076	0.3%	11,265,080,062	11,416,164,019	1.3%	16,950,705,258	1.8%

**SALT LAKE CITY INTERNATIONAL AIRPORT
CARGO ACTIVITY REPORT
EIGHT MONTHS ENDED AUGUST 2025**

	August 2024	August 2025	CHANGE	Year to date 2024	Year to date 2025	CHANGE	12 MO ROLLING Ending 08/2025	% CHANGE
ENPLANED CARGO								
PASSENGER CARRIERS								
AIR CANADA	-	-	0.00%	-	-	0.00%	12,200	100.00%
ALASKA	11,169	17,250	54.45%	98,571	131,791	33.70%	181,909	29.63%
Horizon Air / Alaska	-	514	100.00%	-	1,160	100.00%	1,160	100.00%
Skywest / Alaska	1,918	8,841	360.95%	10,103	44,357	339.05%	48,291	322.72%
AMERICAN	3,612	7,225	100.03%	39,422	44,856	13.78%	67,012	14.62%
American Eagle/Republic	-	-	0.00%	-	-	0.00%	-	0.00%
Envoy Air (American)	-	-	0.00%	-	804	100.00%	811	100.00%
Mesa	-	-	0.00%	-	-	0.00%	-	0.00%
SkyWest (American)	777	490	-36.94%	5,694	4,140	-27.29%	8,035	-16.28%
DELTA	775,370	1,034,917	33.47%	6,301,457	8,066,236	28.01%	11,959,558	27.38%
EW DISCOVER GMBH	-	-	-	-	-	0.00%	-	-100.00%
FRONTIER	-	-	0.00%	-	-	0.00%	-	0.00%
KLM ROYAL DUTCH	148,790	158,779	6.71%	518,802	612,020	17.97%	1,022,403	38.85%
SOUTHWEST	206,058	253,690	23.12%	2,102,393	2,006,058	-4.58%	3,108,307	-17.45%
UNITED	10,791	14,924	38.30%	44,807	101,993	127.63%	157,456	126.35%
Others	-	-	0.00%	7,706	-	-100.00%	-	-100.00%
CARGO CARRIERS								
21 AIR LLC	595,375	682,681	14.66%	3,406,817	4,994,782	46.61%	7,302,917	114.36%
FEDEX EXPRESS*	7,025,916	5,271,073	-24.98%	56,268,838	42,494,796	-24.48%	65,308,515	-24.75%
GEM AIR	25,531	16,912	-33.76%	159,793	164,216	2.77%	231,683	-1.10%
GLOBAL CROSSING	-	-	0.00%	-	-	0.00%	-	-100.00%
SWIFT AIR	-	-	0.00%	60,906	-	-100.00%	-	-100.00%
UPS	3,672,136	3,755,720	2.28%	28,154,117	28,115,834	-0.14%	45,517,320	-1.70%
MISC CARGO	828,016	531,333	-35.83%	6,363,955	3,880,854	-39.02%	6,892,754	-30.06%
TOTAL ENPLANED CARGO (LBS)	13,305,459	11,754,349	-11.66%	103,543,381	90,663,897	-12.44%	141,820,331	-11.99%
DEPLANED CARGO								
PASSENGER CARRIERS								
AIR CANADA	-	-	0.00%	-	-	0.00%	-	0.00%
ALASKA	25,835	34,985	35.42%	126,936	142,642	12.37%	223,727	3.95%
Horizon Air / Alaska	-	674	100.00%	-	4,430	100.00%	4,430	100.00%
Skywest / Alaska	4,497	8,352	85.72%	20,482	45,102	120.20%	55,235	117.64%
AMERICAN	35,351	26,726	-24.40%	195,771	236,274	20.69%	337,691	14.79%
American Eagle/Republic	-	-	0.00%	-	-	0.00%	-	0.00%
Envoy	-	-	0.00%	26	485	1765.38%	500	1823.08%
Mesa (American)	-	-	0.00%	-	-	0.00%	-	0.00%
SkyWest (American)	627	224	-64.27%	5,032	6,584	30.84%	8,819	20.35%
DELTA	1,207,588	1,755,712	45.39%	9,726,792	10,611,386	9.09%	15,647,354	6.13%
SkyWest (Delta Connection)	-	-	0.00%	-	-	0.00%	-	0.00%
EW DISCOVER GMBH	-	-	0.00%	-	-	0.00%	-	-100.00%
KLM ROYAL DUTCH	249,942	247,543	-0.96%	801,573	1,231,307	53.61%	1,670,646	58.54%
SOUTHWEST	364,391	365,770	0.38%	2,835,974	2,687,194	-5.25%	4,140,201	-4.65%
UNITED	47,866	53,152	11.04%	297,461	407,313	36.93%	573,112	21.82%
Others	-	363	100.00%	-	563	100.00%	563	100.00%
CARGO CARRIERS								
21 AIR LLC	1,031,724	638,010	-38.16%	6,007,523	5,866,927	-2.34%	9,696,691	61.41%
FEDEX EXPRESS*	7,098,403	5,864,472	-17.38%	55,510,266	45,977,984	-17.17%	72,389,648	-15.83%
GEM AIR	1,374	3,411	148.25%	8,475	14,932	76.19%	25,971	86.25%
GLOBAL CROSSING	-	-	0.00%	-	-	0.00%	-	-100.00%
SWIFT AIR	-	-	0.00%	92,161	-	-100.00%	-	-100.00%
UPS	4,356,838	4,367,865	0.25%	32,627,456	31,829,559	-2.45%	51,072,149	-3.25%
MISC CARGO	325,719	242,896	-25.43%	4,150,517	2,033,178	-51.01%	3,532,419	-43.52%
ABX AIR	-	-	0.00%	502,607	-	-100.00%	73,965	-86.64%
TOTAL DEPLANED CARGO (LBS)	14,750,155	13,610,155	-7.73%	112,406,445	101,095,860	-10.06%	159,379,156	-8.00%
TOTAL CARGO LBS	28,055,614	25,364,504	-9.59%	215,949,826	191,759,757	-11.20%	301,199,487	-9.92%

*FEDEX EXPRESS includes mail



COMPARISON OF ON TIME OPERATIONS

June 2025

ARRIVALS

Airport	Flights	% On Time	Rank
SLC SALT LAKE CITY INTL	9,995	81.9	1
MSP MINNEAPOLIS-ST. PAUL INTL	11,448	78.6	7
LAX LOS ANGELES INTL	17,148	77.5	3
DTW DETROIT METRO WAYNE CNTY	12,695	75.8	4
PHX PHOENIX SKY HARBOR INTL	15,625	75.4	5
MDW CHICAGO MIDWAY	7,209	75.3	6
SFO SAN FRANCISCO INTL	12,883	74.9	7
LAS LAS VEGAS MCCARRAN INTL	15,966	74.7	8
IAD WASHINGTON DULLES	8,569	72.1	9
SAN SAN DIEGO LINDBERGH FIELD	8,637	71.9	10
SEA SEATTLE-TACOMA INTL	17,374	71.4	11
ATL HARTSFIELD-JACKSON ATLANTA INTL	30,508	70.7	12
BWI BALTIMORE/WASHINGTON INTL	8,680	70.5	13
ORD CHICAGO O HARE	31,716	70.5	14
BOS BOSTON LOGAN INTL	12,486	70.3	15
MIA MIAMI INTL	8,835	70.3	16
FLL FT. LAUDERDALE	6,562	70.1	17
CLT CHARLOTTE DOUGLAS	20,734	70.0	18
AUS AUSTIN	7,852	69.9	19
EWB NEWARK LIBERTY INTERNATIONAL	9,774	69.9	20
BNA NASHVILLE INTL	9,688	69.4	21
MCO ORLANDO INTL	13,243	68.1	22
TPA TAMPA INTL	6,566	67.5	23
DEN DENVER INTL	28,168	66.7	24
JFK NEW YORK JFK INTL	10,702	66.5	25
PHL PHILADELPHIA INTL	11,183	66.4	26
IAH HOUSTON GEORGE BUSH	14,564	66.2	27
DFW DALLAS-FT. WORTH REGIONAL	28,293	65.5	28
LGA NEW YORK LAGUARDIA	13,936	63.4	29
DCA RONALD REAGAN NATIONAL	12,223	61.9	30
AVERAGES	14,109		

DEPARTURES

Airport	Flights	% On Time	Rank
SLC SALT LAKE CITY INTL	9,995	80.9	1
SFO SAN FRANCISCO INTL	12,622	79.6	2
LAX LOS ANGELES INTL	16,578	77.8	3
MSP MINNEAPOLIS-ST. PAUL INTL	10,418	77.8	4
DTW DETROIT METRO WAYNE CNTY	10,770	75.0	5
EWB NEWARK LIBERTY INTERNATIONAL	9,048	74.8	6
BOS BOSTON LOGAN INTERNATIONAL	12,372	74.0	7
PHX PHOENIX SKY HARBOR INTL	15,592	73.9	8
SAN SAN DIEGO LINDBERGH FIELD	8,558	73.7	9
IAD WASHINGTON DULLES	5,271	72.9	10
FLL FT. LAUDERDALE	6,558	72.4	11
LAS LAS VEGAS Harry Reid INTL	15,782	71.9	12
JFK NEW YORK JFK INTL	8,848	71.8	13
SEA SEATTLE-TACOMA INTL	15,695	71.7	14
TPA TAMPA INTERNATIONAL	6,567	70.6	15
MCO ORLANDO INTL	13,234	70.3	16
ORD CHICAGO O HARE	29,641	70.2	17
AUS AUSTIN	7,719	69.4	18
MIA MIAMI INTL	8,831	69.1	19
PHL PHILADELPHIA INTL	8,699	68.0	20
LGA NEW YORK LAGUARDIA	11,257	67.6	21
BNA NASHVILLE INTL	9,394	67.3	22
MDW CHICAGO MIDWAY	7,187	66.3	23
CLT CHARLOTTE DOUGLAS	16,403	64.5	24
DEN DENVER INTERNATIONAL	28,175	64.4	25
DCA RONALD REAGAN NATIONAL	11,890	64.2	26
IAH HOUSTON GEORGE BUSH	10,009	64.2	27
BWI BALTIMORE/WASHINGTON INTL	8,660	64.1	28
ATL HARTSFIELD-JACKSON ATLANTA INTL	27,728	63.3	29
DFW DALLAS-FT. WORTH REGIONAL	28,224	61.0	30
AVERAGES	13,058		

ON TIME ARRIVAL PERFORMANCE AT SLC

By Carrier

Air Carrier	Flights	% On Time
HA HAWAIIAN	30	93.3%
DL DELTA	7,241	86.6%
NK SPIRIT	43	83.7%
AS ALASKA	284	76.6%
UA UNITED	660	70.5%
F9 FRONTIER	204	68.6%
WN SOUTHWEST	992	68.1%
AA AMERICAN	492	67.3%
B6 JETBLUE	49	59.2%
	9,995	85.4%

Source: DOT Air Travel Consumer Report

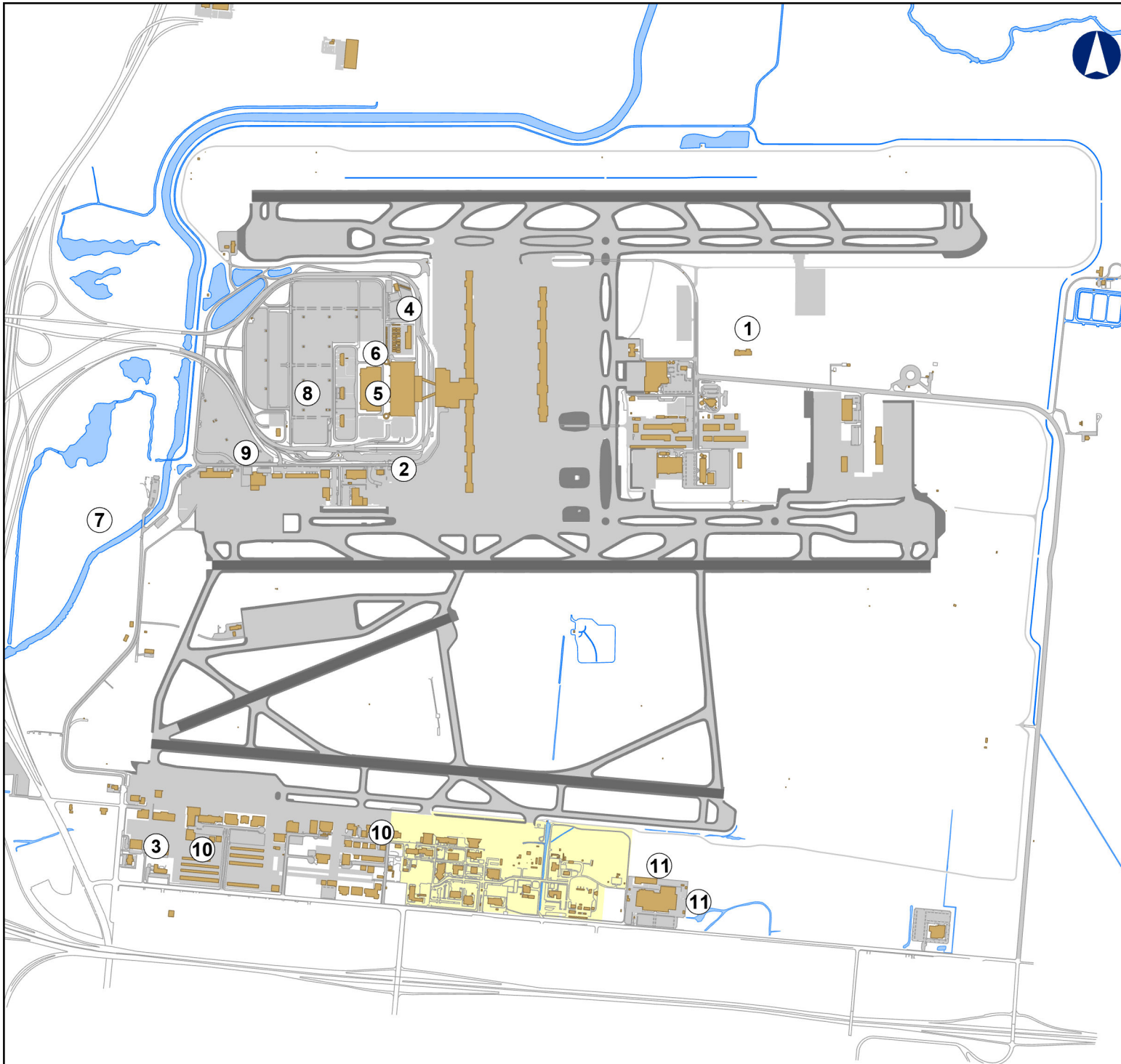
CONSTRUCTION REPORT

TABLE OF CONTENTS

- I. Area Map of Project Locations
- II. Project Schedule
- III. Construction Analysis
- IV. Construction Report

SALT LAKE CITY DEPARTMENT OF AIRPORTS

October 1, 2025



2025 - 2026 Project Legend

Airfield

1. Taxiways U & V

Landside

2. Ground Transportation Restroom + Charging Stations
3. National Weather Service Replacement Controls
4. Bus Plaza EV Stations
5. QTA Elevator Upgrades
6. CUP Crossover Piping
7. South Employee Parking Lot
8. Economy Parking Lot and Bus Lane Reconstruction
9. Electrical Vehicle Charging Stations Ph. IV
10. GA Hangar Demo-Hughes , Upper Limit Rows 6,7,10 & 11
11. Sky Harbour Roadway + Site Improvements

SALT LAKE CITY INTERNATIONAL AIRPORT
CONSTRUCTION PROGRAM
2025/2026 Construction Schedule

ID	Task Name	Start	Finish	Mar '25	Apr '25	May '25	Jun '25	Jul '25	Aug '25	Sep '25	Oct '25	Nov '25
1	Project Title	Mon 5/13/24	Fri 9/29/28									
2	(1) Taxiways U & V	Fri 8/1/25	Fri 9/29/28									
3	(2) Ground Trans. Restrooms & Charging Stations Infrastructure	Mon 5/13/24	Thu 10/30/25									
4	(3) National Weather Service Replacement Controls	Mon 3/3/25	Sat 11/29/25									
5	(4) Bus Plaza EV Stations	Wed 9/25/24	Fri 10/31/25									
6	(5) QTA Elevator Upgrades	Thu 10/3/24	Thu 10/30/25									
7	(6) CUP Crossover Piping	Fri 10/18/24	Thu 9/18/25									
8	(7) South Employee Parking Lot - Phase 1	Mon 4/14/25	Wed 7/8/26									
9	(8) Economy Pakring Lot & Bus Lane Reconstruction	Mon 5/12/25	Wed 10/15/25									
10	(9) Electrical Vehicle Charging Stations Ph. IV	Thu 5/15/25	Fri 7/3/26									
11	(10) GA Hangar Demo - Hughes, Upper Limit, Rows 6,7,10 & 11	Mon 7/14/25	Tue 11/18/25									
12	(11) State of Utah - Sky Harbour Roadway and Site Improvements	Mon 7/28/25	Fri 7/31/26									
13	(12) SVRA Pavement Preservation & Tie Down Reconfiguration	Thu 5/15/25	Sat 9/27/25									

Project: Microsoft Project (latest) Date: Tue 9/30/25	CONSTRUCTION
--	--------------

**SALT LAKE CITY DEPARTMENT OF AIRPORTS
CONSTRUCTION PROJECT STATUS 2025 - 2026**

				APPROVED			
				CHANGE	% OF COST		
#	PROJECT NAME	ENGINEER'S	BID	ORDERS TO	INCREASE TO		
		ESTIMATE	AMOUNT	DATE	DATE	STATUS	CONTRACTOR
	CONSTRUCTION						
1	Taxiways U & V	\$ 179,781,054	\$ 154,284,395			on schedule	Ames Construction
2	Ground Transportation Restroom & Charging Stations	\$ 695,364	\$ 628,223	\$ 31,030	4.94%	on schedule	Paulsen Construction
3	National Weather Service Replacement Controls	\$ 630,710	\$ 617,686	\$ 30,665	4.96%	on schedule	Crescent Construction
4	Bus Plaza EV Stations	\$ 561,550	\$ 558,720	\$ 2,220	0.40%	on schedule	Cache Valley Electric
5	QTA Elevator Upgrades	\$ 655,269	\$ 716,773	\$ 146,338	20.42%	on schedule	Crescent Construction
6	CUP Crossover Piping	\$ 1,682,366	\$ 1,300,400	\$ 126,153	9.70%	complete	Industrial Piping & Welding, LLC
7	South Employee Parking Lot - Phase 1	\$ 21,072,002	\$ 16,486,074			on schedule	Sunroc
8	Economy Parking Lot & Bus Lane Reconstruction	\$ 3,333,220	\$ 2,830,681	\$ 55,405	1.96%	on schedule	ACME
9	Electrical Vehicle Charging Stations Ph. IV	\$ 711,038	\$ 410,998			on schedule	Double D Electrical
10	GA Hangar Demo - Hughes, Upper Limit, Rows 6, 7, 10 & 11	\$ 2,145,362	\$ 997,200	\$ 7,378	0.74%	on schedule	Forge Construction
11	State of Utah - Sky Harbour Roadway & Site Improvements	\$ 5,805,628	\$ 5,178,415			on schedule	Stacy Witbeck Construction
12	SVRA Pavement Preservation & Tie Down Reconfiguration	\$ 768,869	\$ 950,564	\$ 20,391	2.15%	complete	Sunset Mountain Machinery
	Total	\$ 217,842,431	\$ 184,960,128	\$ 336,406	0.18%		
	Engineer's estimate and Bid amount is based on construction cost only.						

CONSTRUCTION REPORT

- 1) **Taxiways U & V** - Construction activity is ramping up following the recent completion of the West Glycol line relocation. Current efforts include installing permanent fencing, excavation and dewatering for the storm drain lift station, and grading in preparation for pile driving. Upcoming work will involve placing aggregate base for Taxiway V and demolishing existing facilities to prepare for structure excavation. Substantial Completion remains targeted for September 29, 2028.
- (2) **Ground Transportation Restrooms & Charging Stations Infrastructure** - The project team is awaiting delivery of long-lead electrical equipment, which shipped on September 30. Installation of this equipment is expected to take approximately eight days once it arrives on site, followed by a project punch walk. Substantial Completion is anticipated by October 30, 2025.
- (3) **National Weather Service Replacement Controls** - A requested tenant Change Order to replace fixed office thermostats with an adjustable model has been approved, the new thermostats have been shipped and will be installed and programmed once on site. Substantial Completion is anticipated by November 29, 2025.
- (4) **Bus Plaza EVC Stations** - The switchgear and transformer have been installed. Charging stations are on site and scheduled for installation and commissioning within the next two weeks. While Substantial Completion is officially scheduled for November 30, 2026, completion is anticipated in October 2025.
- (5) **QTA Elevator Upgrades** – Upon inspection, the State Elevator Inspector failed the elevators, noting that the exposed shaft insulation must be fire-rated in order to comply with code requirements. SLCD A has elected to apply intumescent paint to achieve the required rating. A Change Order is forthcoming to address this scope. Substantial Completion is now anticipated for October 30, 2025.
- (6) **CUP Crossover Piping** - The Contractor has completed the PVC jacketing work, and the project is now complete. Project close-out is currently underway.
- (7) **South Employee Parking Lot - Phase 1** - The Contractor continues dewatering and installing utility infrastructure, (waterline, electrical duct bank, and storm drain). Substantial Completion is on target for July 8, 2026.
- (8) **Economy Parking Lot & Bus Lane Reconstruction** - Final Substantial Completion is anticipated to be issued by October 3. Remaining punch list activities will follow, with Final Completion expected by October 15, 2025.
- (9) **Electrical Vehicle Charging Stations Ph. IV** - The Contractor has backfilled and compacted the utility trenches in the Employee Lot and is scheduled to place asphalt on October 3, weather permitting, with temporary striping to follow. Once these activities are complete, the project will be placed on standby pending delivery of electrical gear and equipment in spring 2026. Substantial Completion is anticipated by July 3, 2026.

- (10) **GA Hangar Demo - Hughes, Upper Limit, Rows 6,7, 10 & 11** - Gas and all other utilities have been disconnected. A pre-demolition inspection has been completed, the report has been uploaded, and the contractor is finalizing the permit. The Change Order to relocate a section of the SIDA fence has been approved, and the fence work began on September 29. Hangar demolition will commence once the fence adjustments are complete. An updated schedule is forthcoming to account for permitting delays. Substantial Completion is anticipated by November 18, 2025.
- (11) **State of Utah - Sky Harbour Roadway and Site Improvements** - Utility installation is progressing, with sewer work approximately 75% complete, waterline work about 25% complete, and aggregate backfill roughly 50% complete. Water and sewer tie-ins are scheduled for October 2025, and Substantial Completion remains on target for July 31, 2026.
- (12) **SVRA Pavement Preservation & Tie Down Reconfiguration** - The Contractor achieved Substantial Completion on September 27, 2025, and is currently addressing punch list items. Project close-out will proceed upon completion of this work.