



Advisory Board
Meeting

August 06 2025

Agenda



Advisory Board Meeting

August 06, 2025

Pursuant to City Code 2.14.060(A) and Utah Code section 52-4-207(2), the Airport Advisory Board adopted a rule permitting electronic meetings for this Board, regardless of whether a quorum is present at an anchor location, so long as such meetings comply with the Open and Public Meetings Act.

To access the meeting please visit:

<https://saltlakecity.webex.com/saltlakecity/j.php?MTID=m6cdbbcoa729bf8ec1ec394deab4ae645>



ADVISORY BOARD MEETING AGENDA

August 06, 2025

9:00 A.M.

CONSENT

- A. Minutes of the May 21, 2025, Meeting

DISCUSSION

- A. Director's Report –Bill Wyatt, Executive Director, SLCDA
- B. Airport Redevelopment Program (ARP) Update –Brian Stetson, ARP Program Director, SLCDA
- C. Accessibility Update – Mark Cheminant, Airport Operations Manager, SLCDA
- D. Airport Revenue Bonds Series 2025A & 2025B – Brian Butler, Airport Chief Financial Officer, SLCDA

MEDIA CLIPPINGS

Media Clippings – July 2025

INFORMATION ITEMS

Air Traffic Statistics – February 2025
Construction Report – June/July 2025
Financials- April/May 2025

The next meeting will be held on **Wednesday, September 17 2025**, at 9:00 a.m. Meetings are usually held in the Board Room, located on the third level of the airport terminal and via Web-ex unless otherwise posted. People with disabilities may make requests for reasonable accommodation no later than 48 hours in advance in order to attend this Airport Advisory Board Meeting. Accommodations may include alternate formats, interpreters, and other auxiliary aids. This is an accessible facility. For questions or additional information, please contact Brett Christensen at 801-575-2042.



Advisory Board
Meeting

August 06, 2025

Minutes

SALT LAKE CITY DEPARTMENT OF AIRPORTS
MINUTES OF ADVISORY BOARD MEETING

April 16, 2025

Members' Present: John Bradshaw
Theresa Foxley
Steve Price
Dirk Burton
Roger Boyer
Arlyn Bradshaw*
Luz Escamilla*

City Council: Victoria Petro

Department of Airports:
Bill Wyatt, Executive Director
Brett Christensen, Administration
Brian Stetson, ARP Program Director
Alex Blanchard, Airport Operations Manager - Wildlife
Thomas Callier, Wildlife Specialist
Treber Andersen, Director of Operations
Brian Butler, Chief Financial Officer
Brady Fredrickson, Director of Planning and Environmental
Pete Higgins, Chief Operations Officer
Nancy Volmer, Communication and Marketing Director
Dean Warner, Acting IT Director
Sean Nelson, Airport Planning/DBE Manager
Megan DePaulis, City Attorney*
Kristen Elder, Management Analyst
Phil Eslinger, SLCPD
Jasen Asay, Communication Coordinator*
Nate Lavin, Air Service & Business Development Manager*

Other: John Michener, JUB
Kim Silvester, JUB
David C*
Steve Arhart*
Brian Bangerter*
Jeanette*
Andy C*

John Bradshaw called the meeting, held in-person at the SLCDAA Admin Offices Board Room and via Web-Ex to order at 9:02 a.m. (* indicates the party attended virtually)

AGENDA

A. Minutes

A motion was made by Theresa Foxley and seconded by Steve Price to approve the minutes of April 16, 2025 as presented. All votes were affirmative; motion passed.

Dirk Burton joined at 9:10, Steve Price 9:12, Victoria Petro 9:13 and Luz Escamilla at 9:30.

B. Director's Report

Bill Wyatt, Executive Director, updated the Airport Advisory Board regarding current events.

- Remembering Mike Williams, a man who contributed his legacy to SLC (see last page)
- Brian Stetson and Chandler McClellan will now be leading the PMT
- Steve Price has been a dedicated member of our Advisory Board since 2017 serving as an outstanding spokesperson for the Airport. His valuable insight and thoughtful contributions will be deeply missed
- Delta Service to Incheon starts June 12th

Dirk Burton gave praise for having such a clean and welcoming airport then went on to ask if the escalators were automatically cleaned. Bill Wyatt explained they are not; Flagship oversees cleaning them.

C. Airport Redevelopment Program (ARP) Update – Brian Stetson, ARP Director, SLCDA

Brian Stetson, Airport Redevelopment Program (ARP) Director, presented an update on the ARP (presentation on file). Main points included were:

- Safety, Statistics, and Schedule
 - Trade hours for the Program overall; 16,174,971
 - Trade workers on site; 657 on site 05/09/2025
- Near Term Schedule Milestones
 - Production PCCP Pavement in Place and Complete
 - Ancillary – Complete and Operations BHS Temporary Control Center
- Airport Redevelopment Program Overall Budget
- Apron and Airfield
 - Started Airfield Bollards, Overhead Headache Bars + Sidewalks near Phase 4 Building
 - Started Airfield P501 Concrete Placement
- Concourse B East – Phase 3 / Ancillary Projects

- CBP dynamic signage
 - Structural Support, Data and Electrical Infrastructure complete
 - Concourse 'B' Frontier Back of House Space Renovation
- Concourse 'B' East – 16 Gates (Phase 4)
 - Early gate concession space turn-over
 - Area Land M exterior masonry
- Baggage Handling System Expansion – Future Capacity
 - TSA has occupied their temporary trailers
 - Project Budget: \$67M
- Project Pictures
 - Baggage Handling Expansion

John Bradshaw inquired about how many hardstands the airport can have. Wyatt noted we can have four at once, then explained they are a relief valve for airlines that get busy or want to test out a new market.

Victoria Petro asked about the timeline for the employee parking lot. Wyatt stated phase one will open next fall with 2100 stalls.

D. Wildlife Management Program – Alex Blanchard, Airport Operations Manager - Wildlife, SLCD

Alex Blanchard, Airport Operations Manager- Wildlife, presented an update on the Wildlife Management Program

- 2009 US Airways Flight# 1549 performed an emergency landing after striking a flock of Canada geese
 - This incident raised public awareness of the threat of aircraft wildlife strikes
 - Highlighted importance of wildlife mitigation programs at airports
- Recent Wildlife Strike Incidents
- Regulatory Requirements – Federal Aviation Administration
 - The FAA Administrator determines that an airport sponsor operating a certificated airport must prepare a Wildlife Hazard Management Plan to address these wildlife
- The SLC Airport Wildlife Team
 - One Manager, Four Specialists and One USDA Wildlife Biologist
- Wildlife Hazard Mitigation Methods
 - Habitat modification: vegetation, fencing, exclusions
 - Repelling methods
- Notable Attractants Near SLC Airport
 - The Great Salt Lake is home to over 300 avian species
 - Duck Hunting clubs
- SLC Airport Wildlife Strikes

- 2023: 10, 2024: 14
- SLC Airport Wildlife Strike Data Summary
- SLCDA Collaborative Projects
 - Runway 16R/34L has the highest occurrences of strikes
 - Notable strikes caused by waterfowl

Theresa Foxley inquired about habitat restoration, asking if that's something the airport must do. Alex Blanchard informed the board that we do, it mostly has to do with our wetlands, we do burn and mowing for drought starving.

Roger Boyer noted this is an amazing challenge. Then asked how airlines view SLC Airport as it relates to the challenges? Blanchard mentioned our airport fairs well. Under 350 strikes, 12-14, that were damaging but not significant. Our strikes are rare, we can only reduce, we can't prevent.

John Bradshaw adjourned the meeting at 10:31 am.

John Bradshaw, Chair

Date



The SLC Airport lost a beloved member of the family on May 12 when Mike Williams passed away. Mike joined the Salt Lake City Department of Airport (SLCDA) Airport Redevelopment Program

(ARP) as Program Director in November 2012 and was dedicated to the program since the beginning.

Mike had an impressive 40 years of experience in the field of project management, many in airport development. Prior to moving to Salt Lake for the ARP, Mike served as the Project Executive on the \$1.4 billion Maynard Holbrook Jackson, Jr. International Terminal at Hartsfield-Jackson Atlanta International Airport and as Delta Air Lines' Project Executive on the \$508 million Terminal 'A' Redevelopment at Boston Logan International Airport.

Many at SLCDA worked with and alongside Mike and experienced his gift for project management and his great attention to detail. Mike led numerous ARP tours for the public over the years; a testament to his deep passion and commitment to The New SLC.

Mike will be greatly missed and SLCDA is grateful for his incredible friendship and leadership.



Advisory Board
Meeting

August 06 2025

Discussion Items

AGENDA: DISCUSSION ITEM (A)

DATE: 06 August 2025

TO: Airport Advisory Board

FROM: Bill Wyatt, Executive Director

SUBJECT: Director's Report

Bill Wyatt, Executive Director, will present a monthly informational report to the Board, which may include:

1. ARP progress
2. Ground transportation update
3. Concessions and rental cars
4. Airport safety and security
5. Airport facilities and operations
6. General aviation
7. Passenger and airport users
8. Environmental matters
9. Financial condition
10. Legislative issues
11. Airlines
12. Communications and marketing

AGENDA: DISCUSSION ITEM (B)

DATE: 06 August 2025

TO: Airport Advisory Board

FROM: Bill Wyatt, Executive Director

SUBJECT: Airport Redevelopment Program Update

Brian Stetson, Program Director (ARP), will present an update on the SLC Airport Redevelopment Program (presentation on file).



AIRPORT REDEVELOPMENT PROGRAM

Status Update 08/06/2025



Safety, Statistics and Schedule



Safety Statistics

Numbers for Last Month

- **OSHA National Average**
 - **Lost Time Rate 1.50 Recordable Rate 2.40**
- **HDJV Metrics**
 - **14,400,461 Total Trade Hours worked**
 - **Lost Time Rate 0.19 Recordable Rate 2.0**

Trade Hours for the Program Overall

- **ARP Metrics (HDJV+AOJV)**
 - **16,561,955 Total Trade Hours worked**

Trade Workers on Site

- **580 Trade Workers (on Site 07/25/2025)**

Schedule Status and Critical Path

- **Phase 3 – Completion of Northside Paving and Installation of Passenger Boarding Bridges**
- **Phase 4 – Completion of Curtainwall, Metal Panel & Roofing System Installations**
- **Phase 4 – Start up and Commissioning of Early Gate Building Systems**
- **Phase 4 – Completion of Early Gate Base Building Finishes**
- **Overall Program is on Schedule**

Near Term Schedule Milestones



Target Date	Current Date	Description
07/15/25	Complete	Concourse B East (Phase 4) - Comm Rooms Shared Access Early Gates
07/21/25	Started	Ancillary Terminal BSO Offices - Capture Space and Construct Dust Wall
07/21/25	Started	Concourse B East (Phase 4) - Start Security Door Testing Early Gates
08/01/25	08/01/25	Concourse B East (Phase 4) - Back of House Turnover Early Gates
08/05/25	08/05/25	Concourse B East (Phase 4) - Start State EEM Inspections Early Gates
08/15/25	08/15/25	Concourse B East (Phase 4) - Complete Fire Alarm Commissioning Early Gates
09/01/25	09/01/25	Concourse B East (Phase 4) - Shared Access for Millwork IT Install Early Gates
09/04/25	09/04/25	Concourse B East (Phase 4) - Temporary Certificate of Occupancy Early Gates
09/09/25	09/09/25	Concourse B East (Phase 4) - SIDA Activation Early Gates

Airport Redevelopment Program Overall Budget



	Budget 06/12/25 FOC	Committed May-25	Commitments Jun-25	Revised Commitments	Earned to Date	Estimate at Completion
Closed TRP CGMPs 1, 2, 2A-2D, 3-7, 9, 09A, 12	\$1,933,090,276	\$1,933,090,276	\$0	\$1,933,090,276	\$1,933,090,276	\$1,933,090,276
Closed NCP CGMPs 13, 14, 15, 16, 17, 18 & 19	\$487,852,444	\$487,852,444	\$0	\$487,852,444	\$487,852,444	\$487,852,444
CGMP 2E & F CMAR General Conditions/Services	\$99,720,169	\$99,720,169	\$0	\$99,720,169	\$92,961,380	\$99,720,169
CGMP 2G CMAR Preconstruction Phase 4	\$51,154,016	\$51,154,015	\$0	\$51,154,015	\$20,325,180	\$51,154,016
CGMP 10 South Concourse East/Tunnel Shell	\$549,521,334	\$549,521,334	\$0	\$549,521,334	\$549,521,334	\$549,521,334
CGMP 11, 11A & 11B Apron Paving & Fueling	\$272,025,556	\$272,025,556	\$0	\$272,025,556	\$236,662,192	\$272,025,556
CGMP 19A Phase 3 NCP/Tunnel Buildout	\$381,972,493	\$381,972,493	\$0	\$381,972,493	\$366,028,320	\$381,972,493
CGMP 20 NCP Phase 2 Airfield Paving & Jet Fuel	\$83,636,471	\$83,173,560	\$0	\$83,173,560	\$64,915,533	\$83,636,471
CGMP 22 & 22F Phase 4 Concourse	\$578,966,604	\$578,966,604	\$0	\$578,966,604	\$353,026,721	\$578,966,604
CGMP 24 Phase 4 Airfield	\$60,016,729	\$60,016,729	\$0	\$60,016,729	\$42,080,251	\$60,016,729
Total Program Construction	\$4,497,956,092	\$4,497,493,180	\$0	\$4,497,493,180	\$4,146,463,631	\$4,497,956,092
TRP Owner Procurement	\$5,869,161	\$5,869,161	\$0	\$5,869,161	\$5,869,160	\$5,869,161
NCP Owner Procurement	\$3,126,328	\$3,126,328	\$0	\$3,126,328	\$1,860,182	\$3,126,328
Security Checkpoint Equipment	\$12,751,472	\$11,751,472	\$0	\$11,751,472	\$7,848,061	\$12,751,472
Automated Security Exit Door Equipment	\$917,430	\$914,453	\$0	\$914,453	\$914,453	\$917,430
TRP Soft Cost	\$352,631,983	\$352,631,983	\$0	\$352,631,983	\$352,577,145	\$352,631,983
NCP Soft Cost Phases 1&3	\$166,496,040	\$166,552,712	(\$2,128,106)	\$164,424,606	\$157,382,301	\$166,496,040
NCP Soft Cost Phase 4	\$87,608,124	\$53,907,710	\$21,571,702	\$75,479,412	\$45,532,080	\$87,608,124
Total Program Soft Cost	\$629,400,538	\$594,753,819	\$19,443,596	\$614,197,415	\$571,983,382	\$629,400,538
ARP Owner Reserve	\$7,616,432	\$0	\$0	\$0	\$0	\$7,616,432
Total ARP Program Budget	\$5,134,973,062	\$5,092,246,999	\$19,443,596	\$5,111,690,595	\$4,718,447,013	\$5,134,973,062

Airfield

- **Continued Airfield Ductbank, Wire Pulling & Light Can Installations**
- **Continued Airfield Site Prep, Utility Installation & Fine Grading**
- **Continued Airfield P-501 Concrete Placement**
- **Started Asphalt Shoulder Paving and at the Mid-Field Tunnel**

Concourse 'B' East - Phase 3 / Ancillary Projects



Airport Command and Control Space – Concourse 'B'

- **Overhead and In-Wall MEP Installations**
- **Metal Stud Framing and Drywall Hang, Tape and Finish**

Concourse 'A' Delta Break Room (New Construction) A21

- **Complete and Operational**

Concourse 'B' Frontier Back of House Space Renovation

- **Ceiling Grid, Drywall Hang, Tape and Finish**

Terminal Baggage Service Office Relocation

- **Space Capture and Existing Space Demolition started**

Concourse 'B' East – 16 Gates (Phase 4)



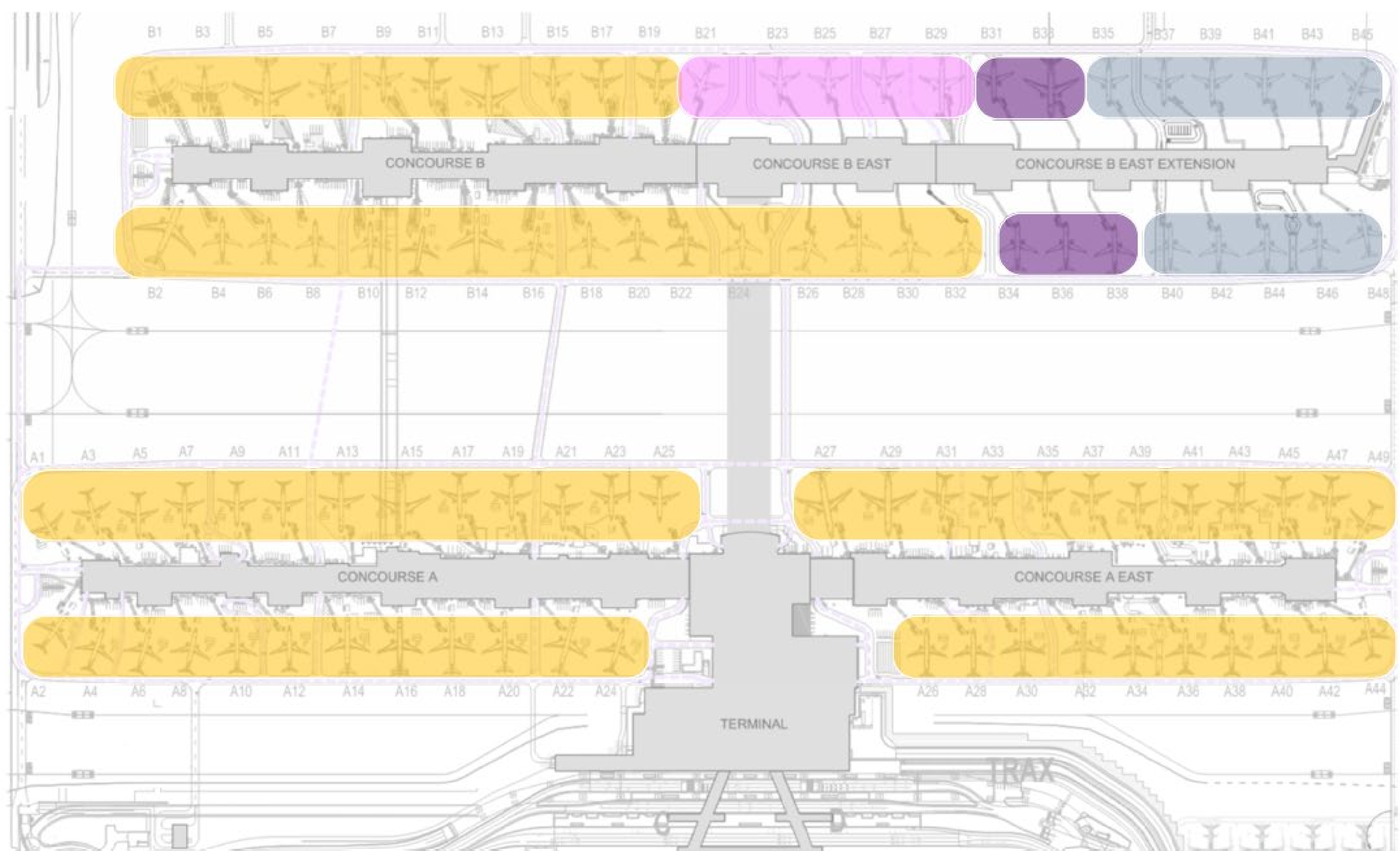
Concourse 'B' East 16 Gates (Phase 4)

- Concourse B East Building 'Dry-In' Acheived**
- Early Gate Ramp Striping complete**
- Early Gate Door Security Testing and Commissioning started**
- Early Gate Level 1 Communication Room Shared Access complete**
- Early Gate HVAC System Commissioning started**
- Started Level 2 Area K/L Gate Millwork Installations started**
- Started Level 2 Area M Terrazzo Placement and Gridding started**
- Started Level 2 Area K/L Public Area Overhead Lighting Energized**
- Started Level 2 Area K Restroom Vanity and Fixture Installations started**
- Started Level 1 Back of House Airline Flooring and Wall Finishes started**

Overall Phase 3 and Phase 4 Phased Delivery



- 73 CURRENT GATES OPEN
- 05 Phase 3 GATES OPEN OCT OF 2025
- 05 Phase 4 GATES OPEN OCT OF 2025
- 11 Phase 4 GATES OPEN OCT OF 2026



Concourses A and B – 06/26/2025



Concourse B East – 06/26/2025



Concourse B Center – BHS Expansion 06/26/2025



Airside Civil



North Apron Fuel Vault Painting



TW G Electrical Lighting Conduit



TL 3E Drain Pipe Installation



TW G Paving Looking North East

Concourse 'B' East (Phase 4) – Early Gate



Gate B34 Millwork Installation



Gate B36 Southwest Millwork Installation



Level 1 Airline Back of House Space



AmEx Lounge Level 2 Public Entrance

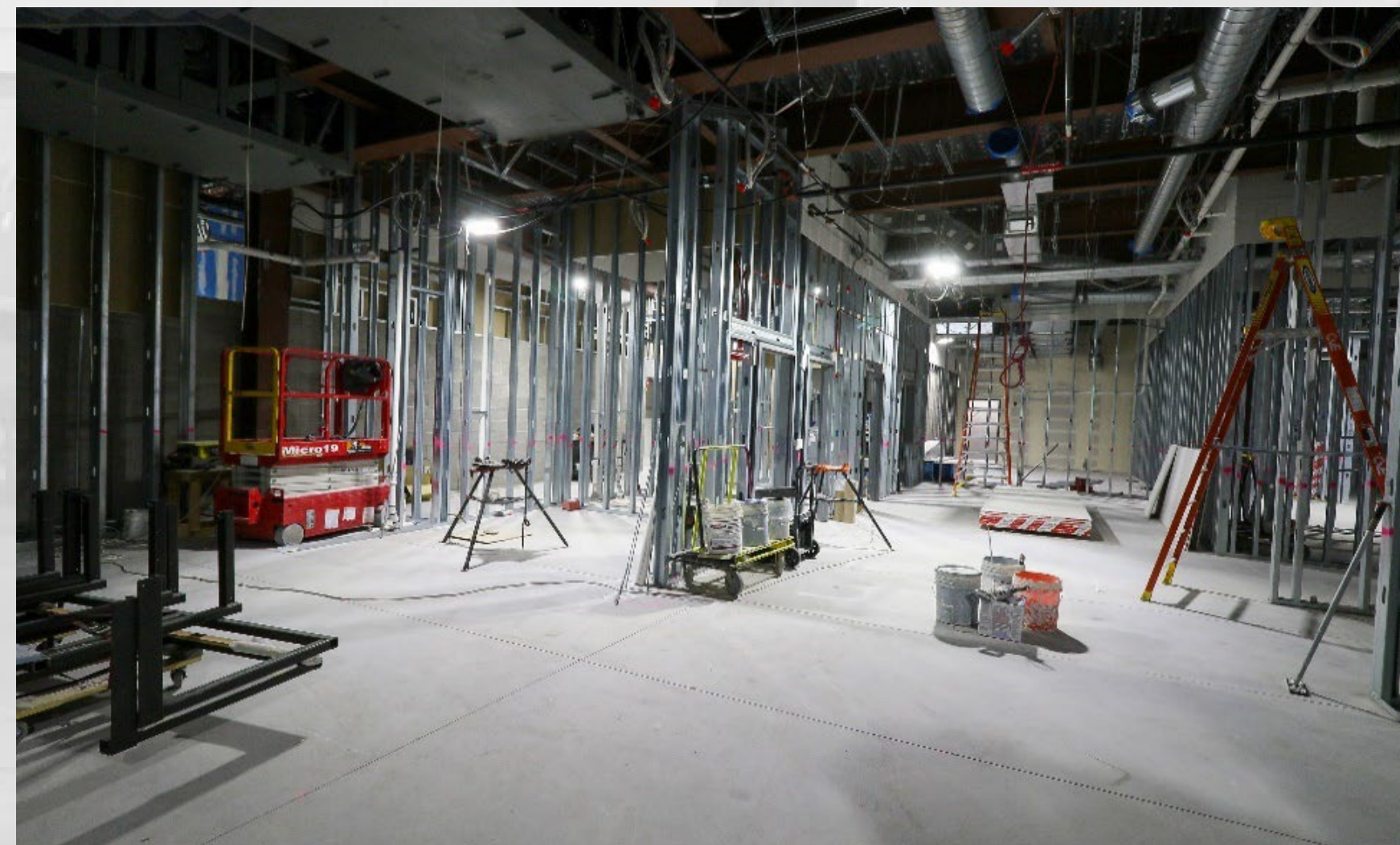
Concourse B East (Phase 4) – Remaining Gates



Area M Holdroom Looking South East



Area N Level 3 United Club Interior Glazing



Area N Level 1 Interior Framing



Area P Passenger Corridor to Bus Shelter

Concourse B East (Phase 4) –Exterior



North Apron Bag Transfer Pier



North Apron Emergency Generator



Area M South Elevation



Area N – South East View

Concourse B East (Phase 4) –Exterior



Area M North Bag Transfer Pier



Area M Glass Install



Area N East End Loading Dock



Area P Bus Shelter

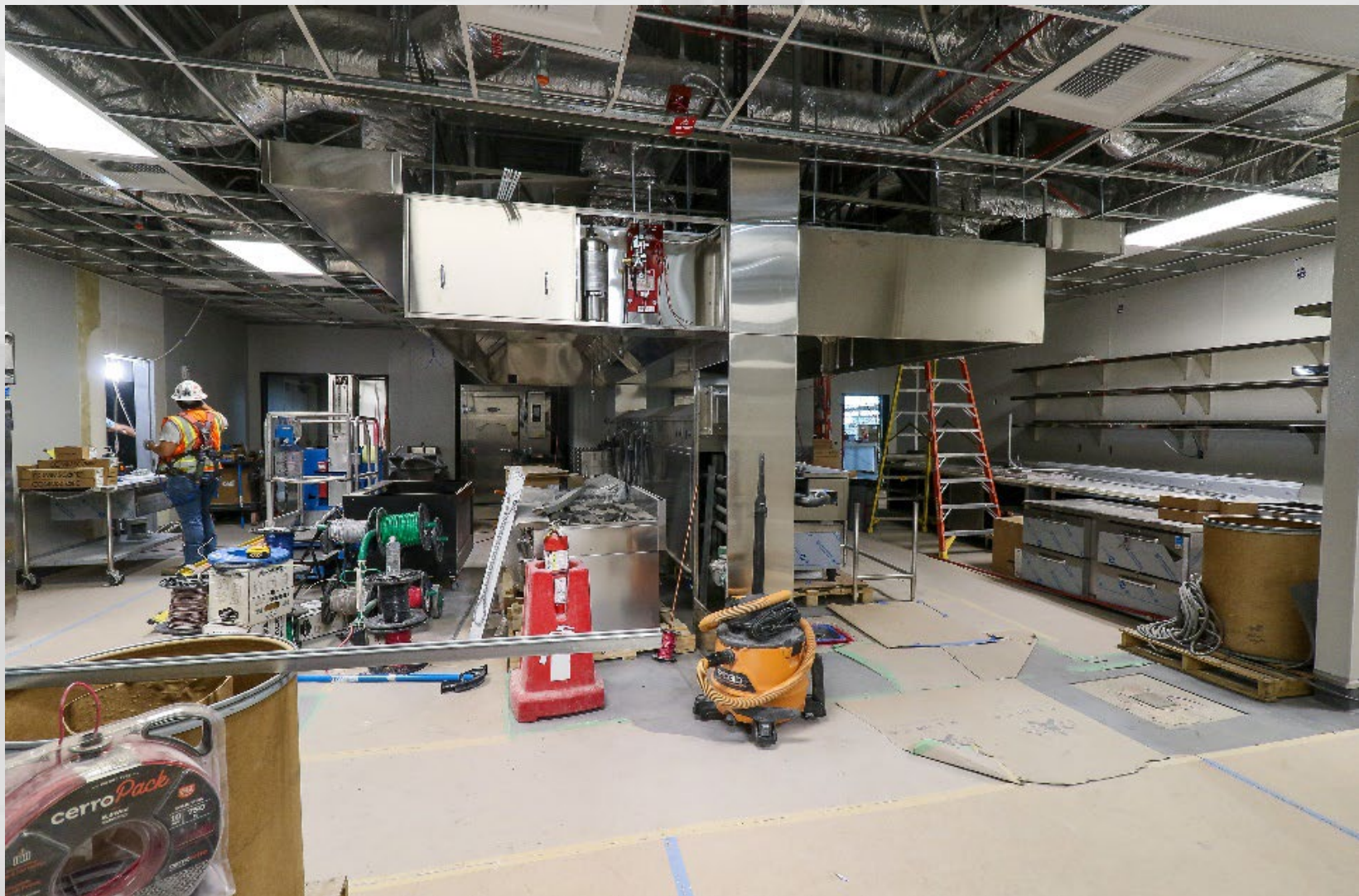
Other Projects – Progress



Delta Concourse A Break Room



AmEx Lounge Bar Area



Delta Sky Club



Delta Sky Club

AGENDA: DISCUSSION ITEM (C)
DATE: 06 August 2025
TO: Airport Advisory Board
FROM: Bill Wyatt, Executive Director
SUBJECT: Accessibility Update

Mark Cheminant, Airport Operations Manager - (presentation on file).



Accessibility Update Mark Cheminant, Airport Operations Manager

Why Implement Accessibility Initiatives



Beyond being required by the ADA,

Everyone deserves dignity.



“Public accommodation and accessibility are a vital component of everyday life, especially for people with disabilities and their caregivers. With the constant expansion of air travel, people have a greater ability to explore their surroundings and travel farther than ever before. Including accommodations and amenities allows people with disabilities to utilize the same facilities as those without disabilities.”

- Jeremy Johnson – Miller Communications Manager National Aging and Disability Transportation Center and Easterseals



Why Implement Accessibility Initiatives



Economic Impact

Open Doors Organization (ODO) released findings from its 2024 research study conducted with The Harris Poll, showcasing the significant economic impact of U.S. adult travelers with disabilities. Despite challenges posed by the COVID-19 pandemic, this market has rebounded and remains vital to the travel and tourism sector.

Key findings from the study include:

- **Economic Impact:** U.S. travelers with disabilities spend nearly \$50 billion annually on travel. Including companions, their total economic contribution is estimated at over \$100 billion per year. This reflects a decline from \$59 billion in the pre-pandemic 2020 study but underscores a strong recovery post-COVID.
- **Travel Trends:** From 2022-2024, 25.6 million travelers with disabilities took 77 million trips. While hotel stays saw a slight decrease (79% in 2024 vs. 84% in 2020), train travel gained popularity, rising to 13% usage, up from 10% in 2020.
- **Technology Adoption:** 81% of travelers with disabilities used the Internet for trip planning and management, marking an all-time high in technology reliance.
- **Persistent Barriers:** Challenges persist across airlines (81% encountering obstacles), airports (84%),

SLC Accessibility Triggers



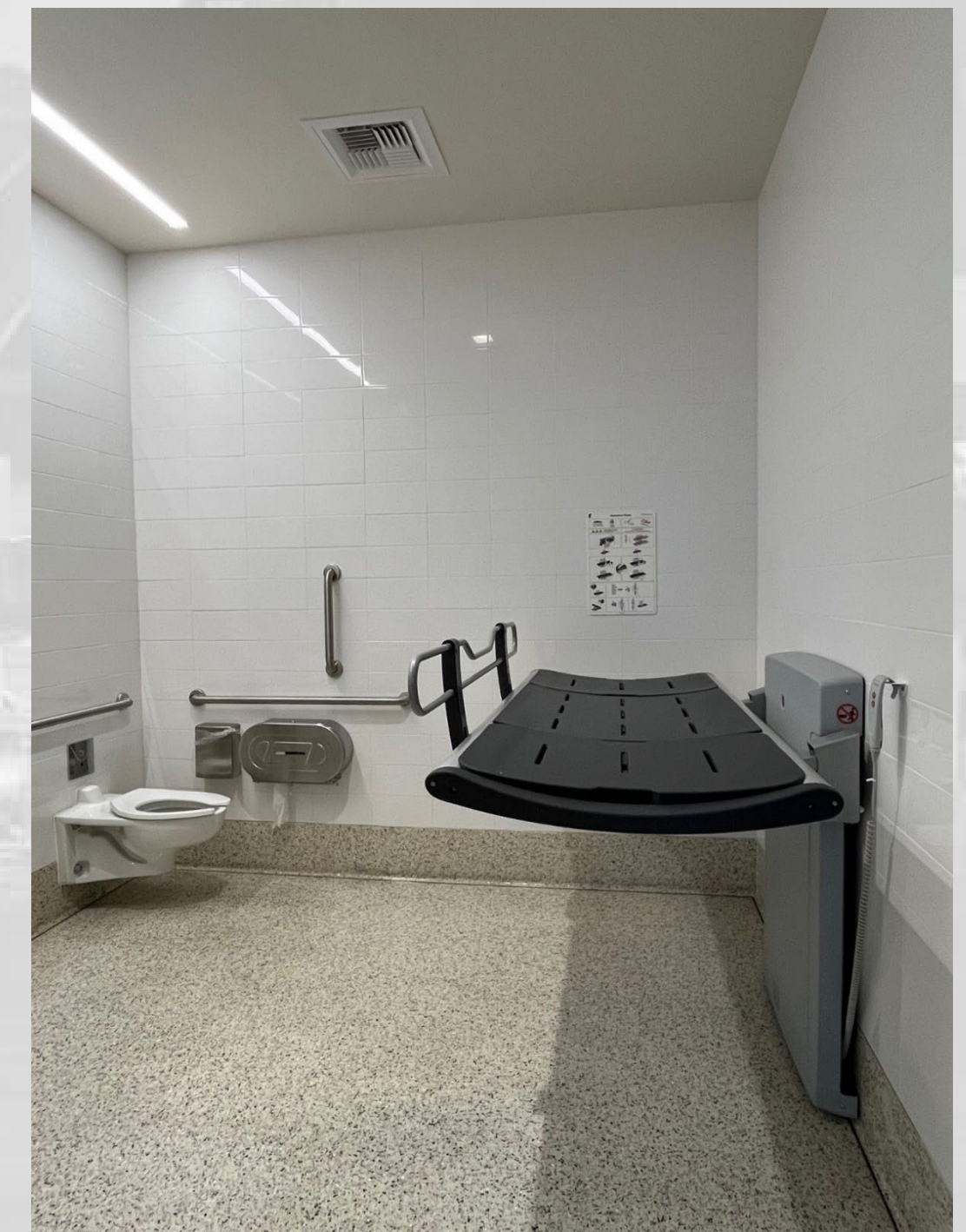
- **2012 Self Evaluation – Transition Plan**
Many items identified and improvements made
Plan for new airport addressed many of the issues
- **May 2023 – FAA Office of Civil Rights Section 504 / ADA Compliance Review**
13 items found to be non-compliant, mainly administrative
Physical Barriers included single belt stanchions for queuing
Clear Floor space at SmarteCarte racks
Tactile and Braille elements missing on some signage
No markings for accessible load/unload zone on curbs
Insufficient effective communication for people who are deaf/hard of hearing especially in the event of emergency
- **Voluntary Compliance Agreement with FAA**
To be completed no later than September 2026 – 10 of 13 items already completed – Stanchions 75 % - Still working on accommodation for effective communication for Deaf and Hard of Hearing, Airport Emergency Plan Language

New Rule Making



- **Universal Changing Tables**

FAA Reauthorization Act of 2024 requires this by 2030 we have offered tables since 2019, built into companion rooms near A15, A30, and B12 prior to regulation passage in early 2024. One table in terminal lobby level 1 near Starbucks. Final table coming with Phase 4.

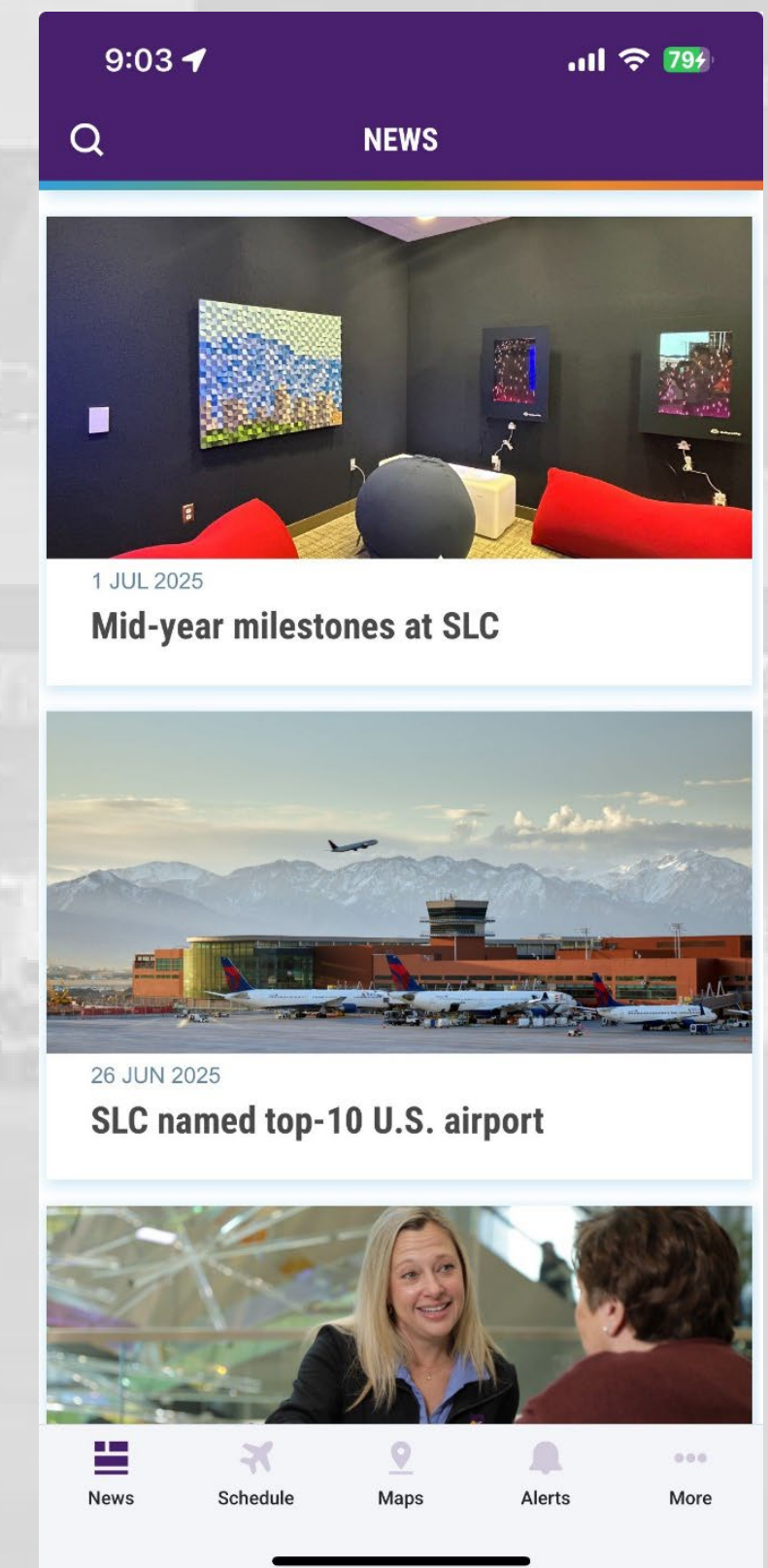
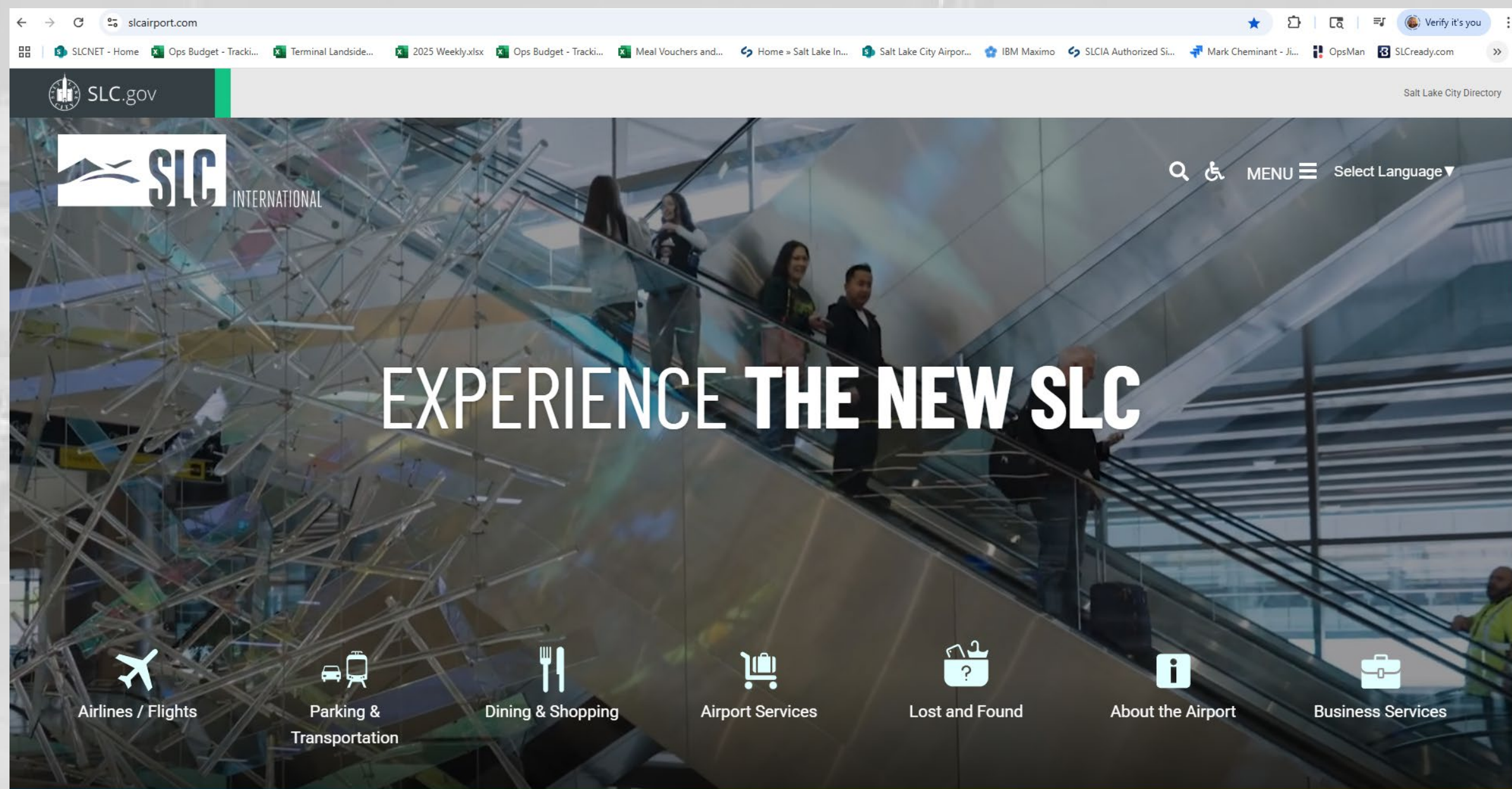


Website and Mobile App Accessibility



DOJ requires that Title II entities must be compliant with WCAG 2.1 AA standards by April 24, 2026.

SLC website updates to meet WCAG 2.2 AA standards by LOVE less than 1 month after this ruling making us one of the first airports to actively pursue compliance. Work ongoing for digital documents and mobile app.



How SLC is Advancing Accessibility



- **Partnership with Open Doors Organization**
Completed Self Evaluation Transition Plan – Found additional compliance items and identified some above and beyond the requirement. Work continues addressing not only compliance issues but exceeding the minimums in many areas.
- **Presentations to national/international audiences at the FAA National Civil Rights Training Conference-** in July of 2024, and **Open Doors Organization Universal Access in Aviation** Conference in September 2024. SLC referred to by the FAA Office of Civil Rights as a model airport for accessibility. Being considered to present at Passenger Terminal Conference, London, UK April 2026.

Awareness Training



- All SLC Badge Holders including city, airline, concessions, and contract employees are given a general ADA Awareness Training at the time of their initial and recurrent badge training.
- This 10-minute computer-based training with quiz gives employees a basic understanding of different disability types and how to interact with people with disabilities
- This training gives employees an understanding of the Hidden Disabilities Sunflower Lanyard program.
- SLC Terminal Landside Operations employees receive an additional 60 - 90 minute self-paced more in-depth training on how to best assist people with all types of disabilities in the airport environment
- SLC Requires all Ground Transportation Providers to be Accessible or able to provide equivalent service
- This is accomplished through a certification process.

How SLC is Advancing Accessibility



- Newly formed Salt Lake City International Airport Accessibility Committee
- This group is comprised of key airport representative and stakeholders along with members of the public who represent all different types of disabilities
- The quarterly meetings of this group allow our divisions and airline partners to learn firsthand what is working well at SLC and their businesses and what could be done better.
- This group is always open to new members of the travelling public who have disabilities and would like an active voice in shaping accessibility at SLC.

Special Service Requests



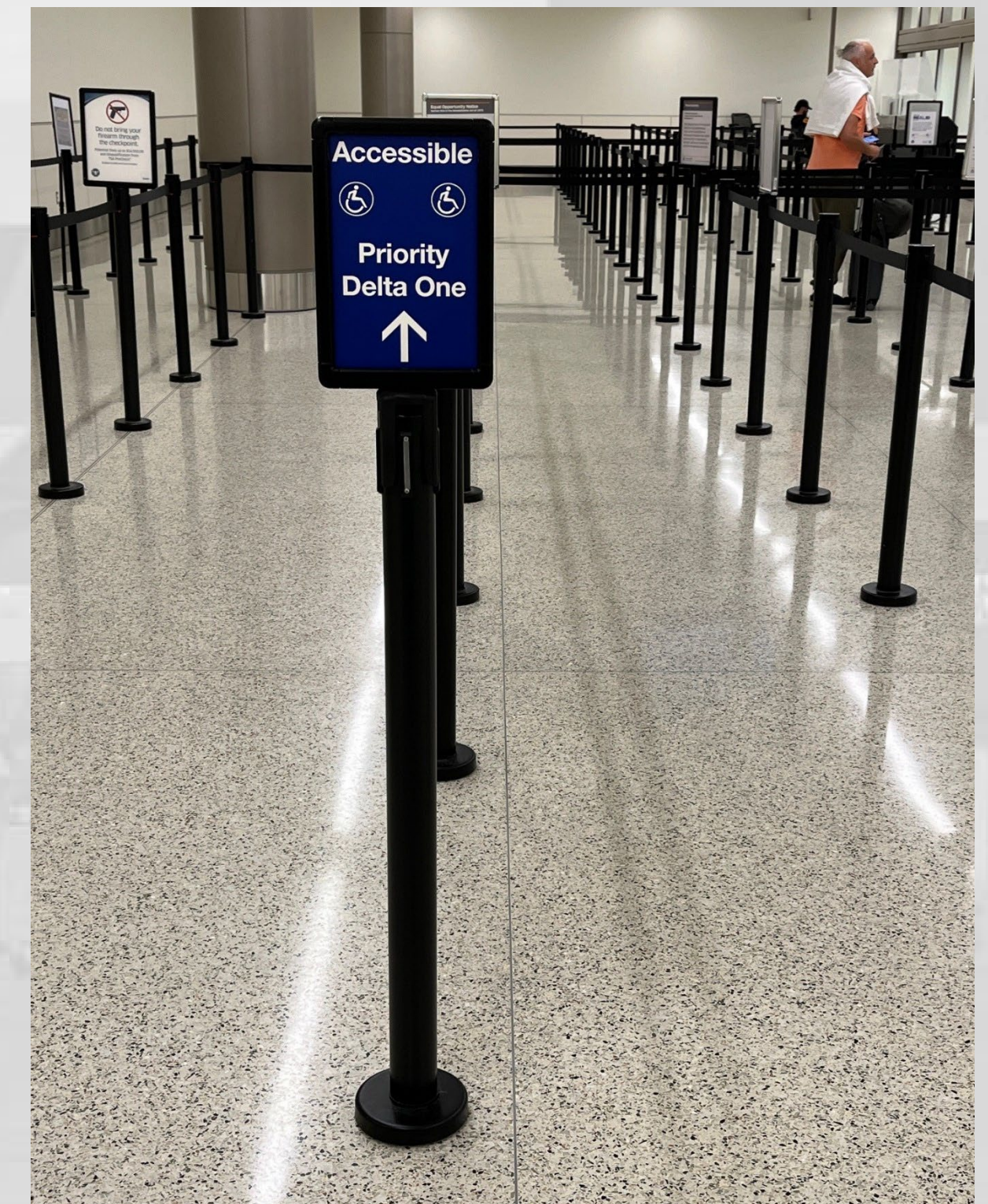
- Robust Special Service Request (SSR) Contracts with airline tenants through SLATEC.
- Through the Airline Use Agreement SLC mandates a single provider for SSR
- Prospect delivers assistance to 1.5 – 2.5 % of SLC's total passenger count daily. Last Year (2024) Prospect assisted over 687,000 passengers with disabilities at SLC.
- Prospect has seen record setting days near 2,800 assists provided in one day already in 2025.
- Monthly ADA/SSR check-in meeting with airline tenants, SLATEC and Prospect.



Cane Detectable Stanchions at Queuing Areas



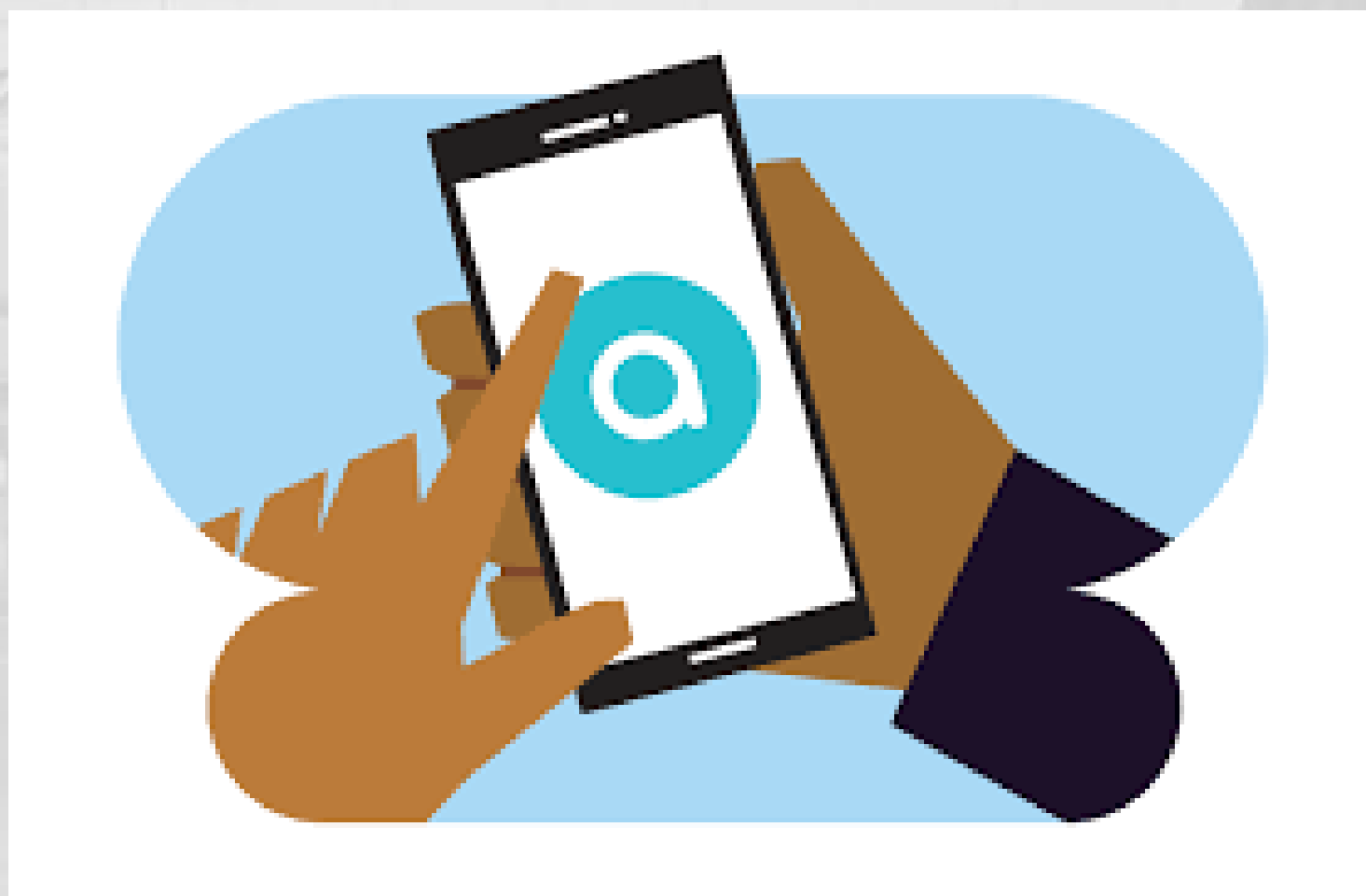
- Accessibility in queuing areas
- SLC provides Dual line stanchions at all airline and rental car queuing areas
- Dedicated accessible lanes at all Security Checkpoints



aira Airport Network



- Member of airta Airport Network
- Airta is a mobile app which you can subscribe to or use for free while at SLC.
- SLC provides free minutes for users of airta who use airta explore offering assistance for people who are Blind or Low Vision, and airta ASL assisting Deaf or Hard of Hearing users who can communicate using ASL.



Electric Mobility Carts



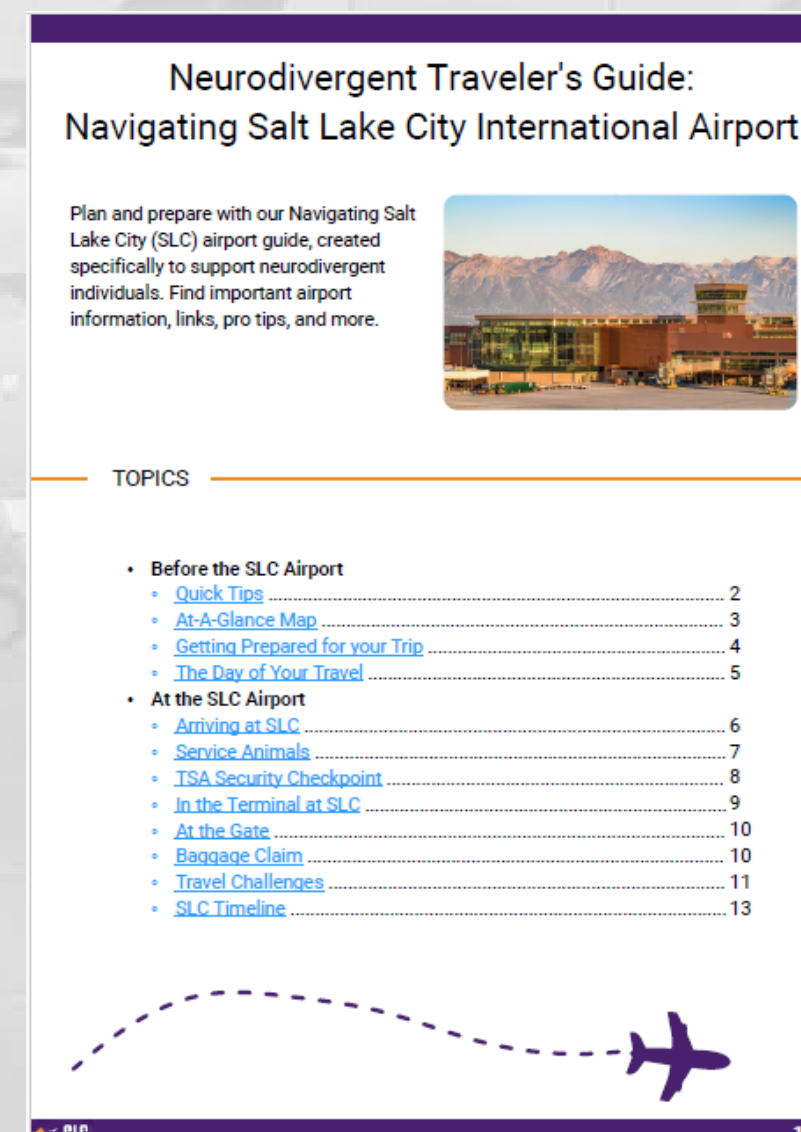
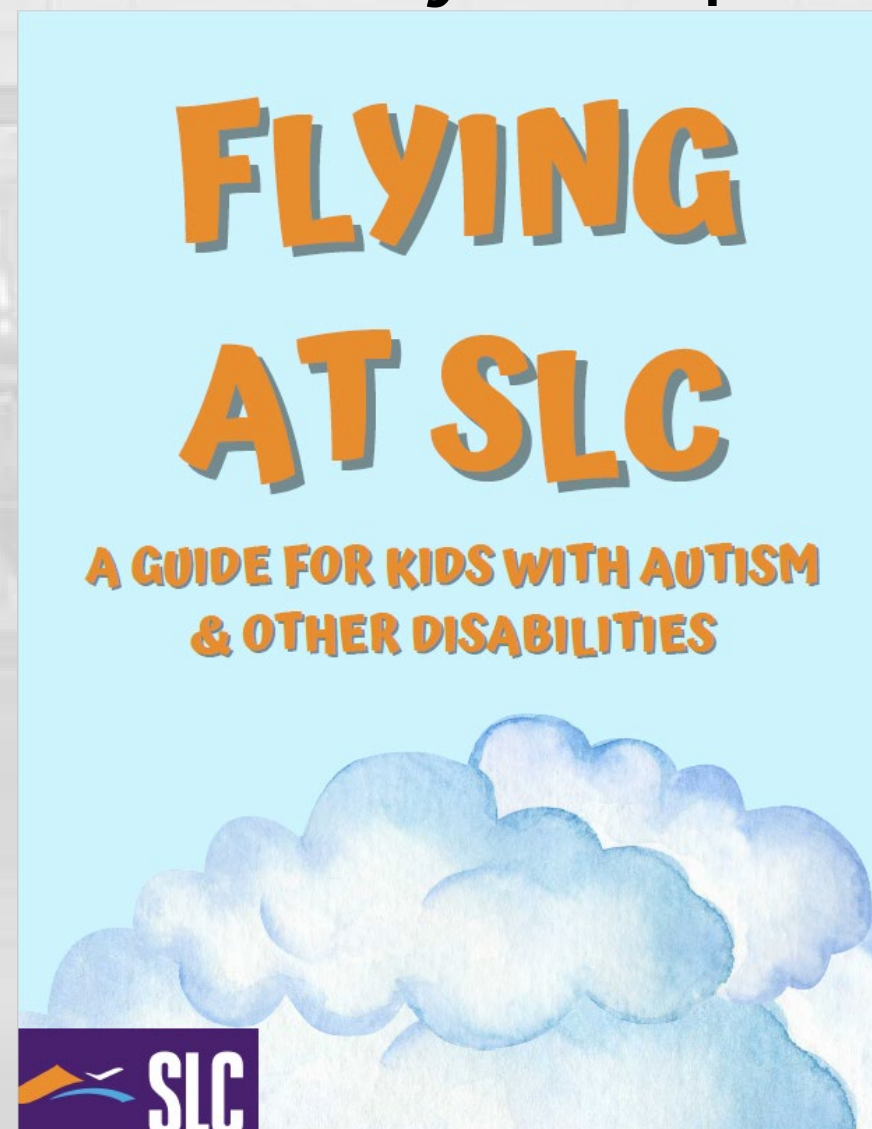
- Provided in A Concourse, The Central (River) Tunnel, and the mid-concourse (west) tunnel to provide an option for people who have limited mobility or require assistance with the distances at SLC.
- New airport specific carts coming soon.



Website Resources for Neuro-Divergent Individuals



- Developed resources for people with neuro divergent conditions to add to our Accessibility Page on slcairport.com
- These resources include:
- The first of its kind and first in the United States SLC Airport Adult Guide
- Child Social Narrative – Flying at SLC
- Expecting the Unexpected
- Sensory Maps of the Terminal and Concourses



Partnership with KultureCity as a Sensory Inclusive Location



- We opened the first of 3 Sensory Rooms in March of 2025
- This room has had nothing but positive feedback
- The Sensory Room is averaging more than 3 visits per day by a person with Sensory Needs since its opening.
- The sensory room includes tactile, visual, and auditory elements designed by medical professionals to specifically help people with neuro-divergent conditions regulate their senses when overwhelmed by the fast-paced airport environment.
- Sensory bag coming soon with items which will also help people regulate their senses. Items include earmuffs, fidget toys, non-verbal communication cards, anti-glare glasses and other items – The bags are theirs to keep once issued.

How SLC is Advancing Accessibility



- It's More Than Just a Bag – KultureCity video
<https://www.youtube.com/watch?v=AsMmtlwDgQ8>



AGENDA: DISCUSSION ITEM (C)
DATE: 06 August 2025
TO: Airport Advisory Board
FROM: Bill Wyatt, Executive Director
SUBJECT: Airport Revenue Bonds Series 2025A & 2025B

Brian Butler, Airport CFO – will present an update on the Airport Revenue Bond Series (presentation on file).



AIRPORT REVENUE BONDS SERIES 2025A & 2025B
AIRPORT ADVISORY BOARD

8/6/2025





Historical Transactions Compared to 2025

	Series 2017*	Series 2018*	Series 2021*	Series 2023*	Series 2025 Proposed	Series 2025 Actual
Assumed Issuance Date	Closed February 23, 2017	Closed October 31, 2018	Closed August 5, 2021	Closed August 1, 2023	August 4, 2025	August 4, 2025
Estimated Principal Amount	\$1.0 billion	\$850.6 million	\$904.6 million	\$600 million	\$633.5 million	\$604.5 million
Estimated Project Fund Deposit	\$883.8 million	\$771.5 million	\$974.6 million	\$583.2 million	\$560.1 million	\$550.1 million
Assumed True Interest Cost	4.09%	4.30%	2.90%	4.55%	5.55%	5.12%
Capitalized Interest Period	Through 2020	Completely through 2020; Partially through 2023	Partially through July 2025	Completely through 2025; Partially through January 2026**	Completely through 2025; Partially through October 2026**	Completely through 2025; Partially through October 2026**
Assumed Final Maturity	7/1/2047	7/1/2048	7/1/2051	7/1/2053	7/1/2055	7/1/2055

Source: PFM Financial Advisors LLC

* Series 2017, Series 2018, 2021 and Series 2023 metrics are actuals

** Capitalized interest period may be revised and will be based upon the placed in-service dates of the projects financed

Estimated vs Actual Sources and Uses of Funds for the Series 2025 Bonds



Estimated May 2025

Sources of Funds	
Bond Par Amount	\$633,520,000
Original Issue Premium	5,161,297
Total Sources of Funds	\$638,681,297

Uses of Funds	
Project Fund Deposit	\$560,132,920
Capitalized Interest	31,254,381
Debt Service Reserve Fund	44,488,563
Issuance Costs	2,805,434
Total Uses of Funds	\$638,681,297

Source: PFM Financial Advisors LLC

Actual July 2025

Sources of Funds	
Bond Par Amount	604,510,000
Original Issue Premium	19,622,293
Total Sources of Funds	\$624,132,293

Uses of Funds	
Project Fund Deposit	\$550,137,792
Capitalized Interest	31,093,946
Debt Service Reserve Fund	40,100,098
Issuance Costs	2,800,456
Total Uses of Funds	\$624,132,293

Source: PFM Financial Advisors LLC

Rating Upgrade from Moody's



MOODY'S RATINGS

Rating Action: Moody's Ratings upgrades Salt Lake City (City of), UT Airport Enterprise's revenue ratings to A1, assigns A1 to Series 2025 Bonds; outlook is stable

08 Jul 2025

New York, July 08, 2025 -- Moody's Ratings (Moody's) has upgraded to A1 from A2 the outstanding revenue bonds of Salt Lake City (City of), UT Airport Enterprise. Concurrently, we have assigned an A1 rating to the \$584 million Airport Revenue Bonds, Series 2025A (AMT) and \$51.2 million Airport Revenue Bonds, Series 2025B (Non-AMT). The outlook is revised to stable from positive.

The upgrade to A1 reflects the progress the airport has made on delivering the remainder of its transformative capital program. Completion of the program is expected within the next 12-18 months, after which leverage and airline cost per enplanement will stabilize at manageable levels and remain underpinned by long-term airline agreements.

RATINGS RATIONALE

The A1 rating reflects the airport's solid traffic growth and its dominant position for serving origin and destination (O&D) travel in a growing economy with favorable demographics. The airport has also executed a long-term airline agreement with Delta through 2044 that underpins cost recovery for The New SLC capital program. The airport serves as Delta's hub airport in the Mountain West and a key connecting market for east-west travel. Continued progress on the capital improvement program also supports the rating: the airport expects phase 3 to be completed in late 2025 and phase 4 to be completed in late 2026, opening the final 11 gates.

The rating also considers the high leverage and airline costs when the existing capital program is complete. While the remaining construction is less complex than earlier elements and the airport has contracted most of the identified work, a low level of completion risks remains but will diminish quickly over the next year as the capital program nears completion and no additional debt is planned currently.

Repricing



Salt Lake City Department of Airports, UT

7/17/2025				Reprice										Proposed Adjustments & Subscriptions			
		Interpolated		MMD							Interp	Interp	Spread	Spread Change	Exp. MMD Change	Yield Change	Subscription
Maturity	Amort	MMD	Call Date	Amort	Coupon	Spread	Yield	Price	YTM	% UST	MMD	BVAL	to BVAL				
Series 2025A (AMT)																	
7/1/2026	1,050	2.46%	-	1,050	5.000%	60	3.06%	101.716	3.061%	74%	2.46%	2.47%	59	(5)	Steady	0.00%	1.52x
7/1/2027	8,690	2.46%	-	8,690	5.000%	65	3.11%	103.467	3.110%	80%	2.46%	2.49%	62		Steady	0.00%	1.78x
7/1/2028	9,125	2.47%	-	9,125	5.000%	65	3.12%	105.180	3.120%	80%	2.47%	2.53%	59		Steady	-0.05%	5.36x
7/1/2029	9,590	2.47%	-	9,590	5.000%	71	3.18%	106.632	3.180%	81%	2.47%	2.55%	63		Steady	-0.02%	2.83x
7/1/2030	10,060	2.55%	-	10,060	5.000%	73	3.28%	107.732	3.280%	82%	2.55%	2.60%	68		1-3 bps cut	-0.03%	3.62x
7/1/2031	10,565	2.70%	-	10,565	5.000%	78	3.48%	108.047	3.480%	85%	2.70%	2.74%	74	(2)	1-3 bps cut	-0.02%	2.95x
7/1/2032	11,100	2.85%	-	11,100	5.000%	83	3.68%	107.981	3.680%	87%	2.85%	2.85%	83		1-3 bps cut	0.00%	2.09x
7/1/2033	11,665	2.96%	-	11,665	5.000%	85	3.81%	108.053	3.810%	89%	2.96%	2.99%	82		3-5 bps cut	0.00%	1.26x
7/1/2034	12,235	3.11%	-	12,235	5.000%	85	3.96%	107.737	3.960%	90%	3.11%	3.10%	86		3-5 bps cut	-0.02%	2.53x
7/1/2035	12,840	3.28%	-	12,840	5.000%	87	4.15%	106.842	4.150%	93%	3.28%	3.26%	89		3-5 bps cut	-0.03%	3.43x
7/1/2036	13,485	3.45%	07/01/2035	13,485	5.000%	90	4.35%	105.181	4.396%	96%	3.45%	3.38%	97	(2)	3-5 bps cut	-0.02%	2.74x
7/1/2037	14,165	3.58%	07/01/2035	14,165	5.000%	91	4.49%	104.037	4.556%	98%	3.58%	3.50%	99	(2)	4-6 bps cut	-0.02%	2.48x
7/1/2038	14,870	3.71%	07/01/2035	14,870	5.000%	90	4.61%	103.069	4.680%	100%	3.71%	3.63%	98	(3)	4-6 bps cut	-0.03%	3.16x
7/1/2039	15,610	3.81%	07/01/2035	15,610	5.000%	93	4.74%	102.032	4.798%	101%	3.81%	3.75%	99		5-7 bps cut	0.00%	2.20x
7/1/2040	16,390	3.92%	07/01/2035	16,390	5.000%	88	4.80%	101.557	4.852%	101%	3.92%	3.88%	92	(4)	5-7 bps cut	-0.04%	4.82x
7/1/2041	17,210	4.03%	07/01/2035	17,210	5.250%	83	4.86%	103.032	4.971%	101%	4.03%	3.98%	88	(3)	5-7 bps cut	-0.03%	3.00x
7/1/2042	18,115	4.15%	07/01/2035	18,115	5.250%	80	4.95%	102.321	5.044%	102%	4.15%	4.06%	89	(3)	5-7 bps cut	-0.03%	3.16x
7/1/2043	19,055	4.26%	07/01/2035	19,055	5.250%	79	5.05%	101.538	5.117%	103%	4.26%	4.14%	91	(2)	5-7 bps cut	-0.02%	2.39x
7/1/2044	20,070	4.34%	07/01/2035	20,070	5.250%	77	5.11%	101.072	5.160%	103%	4.34%	4.22%	89	(2)	5-7 bps cut	-0.02%	3.15x
7/1/2045	21,115	4.40%	07/01/2035	21,115	5.250%	77	5.17%	100.608	5.200%	103%	4.40%	4.30%	87		5-7 bps cut	0.00%	1.95x
7/1/2046		4.45%	07/01/2035														
7/1/2047		4.49%	07/01/2035														
7/1/2048		4.53%	07/01/2035														
7/1/2049		4.56%	07/01/2035														
7/1/2050	124,050	4.58%	07/01/2035	124,050	5.500%	60	5.18%	102.449	5.321%	103%	4.58%	4.55%	63		5-7 bps cut	0.00%	0.64x
7/1/2051		4.60%	07/01/2035														
7/1/2052		4.62%	07/01/2035														
7/1/2053		4.63%	07/01/2035														
7/1/2054		4.64%	07/01/2035														
7/1/2055	162,135	4.65%	07/01/2035	162,135	5.500%	60	5.25%	101.906	5.371%	105%	4.65%	4.65%	60		5-7 bps cut	0.00%	1.82x

Airport Sector Update

Recent Airport AMT Pricing Credit Spreads



Comparison of Recent Airport AMT Pricing Spreads

Issuer Name	AMT							
	SLC	JFK NTO	SAN	DTW	MWAA	CLT	DSM	ORD (TriPS)
Sale Date	07/17/25	07/16/25	06/17/25	06/12/25	06/06/25	05/21/25	05/21/25	05/20/25
Series	2025A	2025A	2025B	2025B	2025A	2025B	2025A	2025
Par Amount	\$553,870,000	\$1,367,075,000	\$628,635,000	\$65,915,000	\$714,425,000	\$25,405,000	\$169,650,000	\$38,440,000
Rating (M/S/F/K)	A1/A+/-/AA	Baa3/-/BBB-/BBB-	Aa3/-/AA-/-	A1/A+/-/AA	Aa3/AA-/AA-/-	Aa3/-/AA-/-	Aaa/AAA/-/-	-/BBB+/-/-
Call Option	Jul 1, 2035	Jun 30, 2034	Jul 1, 2035	Dec 1, 2035	Oct 1, 2035	Jul 1, 2035	Jun 1, 2033	Jul 1, 2035
Bond Insurance	N/A	AG	N/A	N/A	N/A	N/A	N/A	N/A
Senior Manager	JP Morgan / BofA	BofA SECURITIES	BofA SECURITIES	Loop	RBC	BofA SECURITIES	JP Morgan	JP Morgan
0	2025							
1	2026	+60			+67			
2	2027	+65			+70	+68	+58	
3	2028	+65	+70		+78	+73	+63	
4	2029	+71	+75	+88	+83	+78	+65	
5	2030	+73	+77	+91	+88	+83	+69	
6	2031	+78	+80	+93	+90	+86	+72	
7	2032	+83	+82	+95	+87	+88	+74	
8	2033	+85	+83	+95	+88	+88	+78	
9	2034	+85	+79	+94	+87	+88	+78	
10	2035	+87	+77	+96	+85	+88	+78	
11	2036	+90	+84	+95 (5.25%)	+89	+88	+80	+115 (5.25%)
12	2037	+91	+125 (5.50%)	+81 (5.25%)	+95 (5.25%)	+88 (5.25%)	+83	+113 (5.25%)
13	2038	+90	+91 (5.50%)	+78 (5.25%)	+97 (5.25%)	+88	+85 (5.25%)	+83
14	2039	+93	+121 (5.50%)	+78 (5.25%)	+96 (5.25%)	+85 (5.25%)	+82 (5.25%)	+81
15	2040	+88	+117 (6.00%)	+74 (5.25%)	+94 (5.25%)	+80 (5.25%)	+79 (5.25%)	+78
16	2041	+83 (5.25%)	+117 (6.00%)	+71 (5.25%)	+91 (5.50%)	+78 (5.25%)	+78 (5.25%)	+70 (5.25%)
17	2042	+80 (5.25%)	+113 (6.00%)	+66 (5.25%)	+82 (5.50%)	+75 (5.25%)	+75 (5.25%)	+70 (5.25%)
18	2043	+79 (5.25%)	+86 (6.00%)	+62 (5.25%)	+82 (5.50%)	+68 (5.50%)	+73 (5.25%)	
19	2044	+77 (5.25%)	+110 (6.00%)	+62 (5.25%)	+79 (5.50%)	+67 (5.50%)	+73 (5.25%)	
20	2045	+77 (5.25%)	+90 (6.00%)	+58 (5.25%)	+78 (5.50%)	+65 (5.50%)	+65 (5.25%) +72 (5.00%)	
21	2046							
22	2047							
23	2048							
24	2049							
25	2050	+60 (5.50%)	+84 (6%) +110 (6.00%)	+54 (5.25%)	+61 (5.75%)	+64		
26	2051							
27	2052							
28	2053							
29	2054							
30	2055	+60 (5.50%)	+82 (6%) +110 (6.00%)	+42 (5.50%)		+49 (5.50%)		



Airport Sector Update

\$604.510 MM Salt Lake City International Airport, Series 2025AB Airport Revenue Bonds

Sale Date:	July 17, 2025					
Issuer:	Salt Lake City International Airport					
Tax Status:	\$553,870,000 Series 2025A (AMT) \$50,640,000 Series 2025B (Non-AMT)					
Ratings:	Moody's: A1 (Stable) S&P: A+ (Stable) Kroll: AA (Stable)					
Purpose:	The Series 2025 Bonds are being issued to finance portions of the New SLC and certain other projects being undertaken at Salt Lake City International Airport					
Structure:	<u>Series</u>	<u>Structure</u>	<u>Maturities</u>	<u>Coupon</u>	<u>Yield</u>	<u>Spread</u>
		<i>Serial</i>	2026 - 2045	5.00% - 5.25%	3.06% - 5.17%	+60 - 93 bps
	2025A	<i>Term</i>	2050	5.50%	5.18%	+60 bps
		<i>Term</i>	2055	5.50%	5.25%	+60 bps
		<i>Serial</i>	2029 - 2045	5.00% - 5.25%	2.63% - 4.80%	+16 - 40 bps
	2025B	<i>Term</i>	2050	5.50%	4.95%	+37 bps
		<i>Term</i>	2055	5.50%	5.02%	+37 bps
AMT Premium:	23 - 61 bps					
Call Feature:	Jul 1, 2035					
BofA Role:	Joint Bookrunner (Right lead)					



- On June 17, 2025, the Salt Lake City International Airport issued \$604,510,000 Airport Revenue Bonds for the Salt Lake City International Airport, consisting of \$553,870,000 Series 2025A Bonds and \$50,640,000 Series 2025B Bonds
- The proceeds of the 2025 Bonds will be used, with other available funds to finance portions of the New SLC and certain other projects being undertaken at Salt Lake City International Airport
 - SLC facilities were originally built to accommodate 10 million annual passengers, but prior to the pandemic were serving 26 million. The New SLC is designed to accommodate 34 million, limiting medium-term capital and debt needs
 - Series 2025 is the final debt issuance to finance the New SLC and other projects
- The Series 2025 Bonds were rated by Moody's, S&P, and Kroll:
 - Moody's upgraded SLC from 'A2' to 'A1', citing the airport's solid traffic growth and its dominant position in O&D travel
 - S&P assigned the Series 2025 Bonds 'A+', reflecting favorable economic fundamentals, financial resiliency, moderate leverage (debt-to-net-revenue in the 10-15x range) and exposure to Delta's connecting activity
 - Kroll assigned 'AA' rating to the Series 2025 Bonds, citing the experience of management, the economically diverse and growing air trade area, and the Second Amended Airport Use and Lease Agreement
- The transaction was very well-received, with approximately \$1.3 billion of total orders for a 2.1x total subscription from 48 different investors (2.1x subscription on the Series 2025A and 2.8x subscription on the Series 2025B)
- **The Bonds achieved an all-in true interest cost of 5.12% over an average life of 19.37 years**
- **BofA served as Joint Bookrunner on this transaction**



Questions?



Advisory Board Meeting

August 6, 2025

Media Clippings

<https://slairport.com/assets/pdfDocuments/AABoard/Aug2025ClippingPacket.pdf>

Compiled by the Communication & Marketing Dept.



Advisory Board
Meeting

August 06 2025

Information



**SALT LAKE CITY INTERNATIONAL AIRPORT
AIR TRAFFIC STATISTICS AND ACTIVITY REPORT
FOUR MONTHS ENDED APRIL 2025**

	April 2025	CHANGE	Year to date 2025	CHANGE	12 MO ROLLING Ending 04/2025	CHANGE
PASSENGERS						
<i>DOMESTIC</i>						
Enplaned - Local	738,767	-3.10%	3,173,112	3.84%	9,361,878	3.89%
Enplaned - Connections	346,794	-8.00%	1,312,747	-13.70%	4,572,501	-2.03%
Less International	-57,430		-219,369		-687,110	
Enplaned	1,028,131	-5.17%	4,266,490	-2.21%	13,247,269	1.78%
Deplaned - Local	790,102	-0.30%	3,230,883	3.03%	9,653,315	4.63%
Deplaned - Connection	346,794	-8.00%	1,312,747	-13.70%	4,572,501	-2.03%
Less International	-61,432		-234,144		-695,623	
Deplaned	1,075,464	-3.16%	4,309,486	-2.69%	13,530,193	2.40%
TOTAL DOMESTIC	2,103,595	-4.15%	8,575,976	-2.45%	26,777,462	2.09%
<i>INTERNATIONAL</i>						
Enplaned	57,430	4.01%	219,369	2.55%	687,110	3.59%
Deplaned	61,432	4.38%	234,144	2.50%	695,623	2.35%
TOTAL INTERNATIONAL	118,862	4.20%	453,513	2.52%	1,382,733	2.96%
TOTAL PASSENGERS	2,222,457	-3.74%	9,029,489	-2.21%	28,160,195	2.13%
LANDED WEIGHT						
Air Carriers	1,303,654,937	1.90%	5,253,399,121	1.11%	15,812,587,279	3.10%
Cargo Carriers	81,598,354	-9.31%	308,176,920	-8.79%	1,014,916,201	-1.41%
TOTAL LANDED WEIGHT (LBS)	1,385,253,291	1.16%	5,561,576,041	0.50%	16,827,503,480	2.82%
MAIL						
Enplaned	3,884,755	291.66%	11,139,981	364.05%	24,443,353	124.97%
Deplaned	1,439,614	243.45%	4,630,340	258.53%	11,977,505	102.14%
TOTAL MAIL (LBS)	5,324,369	277.33%	15,770,321	327.14%	36,420,858	116.91%
CARGO						
Enplaned	11,512,506	-4.66%	44,363,046	-12.66%	148,269,805	-8.22%
Deplaned	13,316,271	-4.70%	48,912,525	-10.63%	164,873,211	-3.24%
TOTAL CARGO (LBS)	24,828,777	-4.68%	93,275,571	-11.61%	313,143,016	-5.67%
MAIL & CARGO						
Enplaned	5,756	-4.67%	22,182	-12.66%	74,135	-8.22%
Deplaned	6,658	-4.70%	24,456	-10.63%	82,437	-3.24%
TOTAL MAIL & CARGO (TONS)	12,414	-4.68%	46,638	-11.61%	156,572	-5.67%
AIRCRAFT OPERATIONS						
Passenger Aircraft	20,582	2.48%	84,098	2.11%	249,476	3.44%
All-Cargo Aircraft	1,016	-23.15%	4,086	-21.75%	14,356	-10.52%
General Aviation	5,475	18.53%	22,332	7.16%	63,590	4.85%
Military	261	-0.76%	964	-9.99%	2,918	-37.98%
TOTAL AIRCRAFT OPERATIONS	27,334	3.98%	111,480	1.82%	330,340	2.41%

SALT LAKE CITY INTERNATIONAL AIRPORT
PASSENGER TRAFFIC REPORT
FOUR MONTHS ENDED APRIL 2025

	April 2024	April 2025	% CHANGE	Year to date 2024	Year to date 2025	% CHANGE	12 MO ROLLING Ending 04/2025	% CHANGE
ENPLANED PASSENGERS								
AEROMEXICO	3,795	4,239	11.7%	14,707	18,828	28.0%	59,584	110.9%
AIR CANADA	-	-	0.0%	-	-	0.0%	7,972	1.8%
ALASKA	13,233	13,457	1.7%	54,114	52,390	-3.2%	178,546	1.6%
Horizon Air / Alaska	-	224	100.0%	12	1,530	12650.0%	2,409	19975.0%
Skywest / Alaska	9,702	10,673	10.0%	33,359	37,203	11.5%	112,953	15.9%
AMERICAN	49,504	44,168	-10.8%	238,144	207,619	-12.8%	598,362	-3.3%
Envoy Air	1,726	189	-89.0%	2,213	5,406	144.3%	12,707	118.4%
American/Mesa Air	-	-	0.0%	-	-	0.0%	-	0.0%
SkyWest (American)	7,674	12,070	57.3%	34,832	52,591	51.0%	123,309	53.7%
AVELO	-	698	100.0%	-	2,893	100.0%	4,546	100.0%
DELTA	664,885	639,057	-3.9%	2,574,605	2,572,820	-0.1%	8,116,802	1.7%
SkyWest (Delta Connection)	133,193	127,295	-4.4%	524,300	493,341	-5.9%	1,574,452	-1.3%
EUROWINGS DISCOVER	-	-	0.0%	-	-	0.0%	-	-100.0%
FRONTIER	37,789	41,022	8.6%	121,654	157,726	29.7%	508,270	61.7%
HAWAIIAN	-	4,997	100.0%	-	19,768	100.0%	60,247	100.0%
JETBLUE	22,041	3,842	-82.6%	101,302	33,231	-67.2%	135,554	-55.3%
KLM ROYAL DUTCH AIRLINES	3,937	6,036	53.3%	3,937	6,494	64.9%	35,731	18.4%
SOUTHWEST	123,086	117,015	-4.9%	522,922	511,295	-2.2%	1,504,496	1.8%
SPIRIT	12,895	4,416	-65.8%	70,422	23,722	-66.3%	150,719	-31.3%
SUN COUNTRY	553	436	-21.2%	1,501	1,006	-33.0%	10,619	195.1%
UNITED	34,038	34,755	2.1%	210,351	213,761	1.6%	535,207	3.8%
Mesa Airlines (United Express)	1,811	-	-100.0%	3,342	1,123	-66.4%	13,191	-0.7%
SkyWest (United Express)	19,491	20,972	7.6%	64,548	73,066	13.2%	187,830	-8.8%
Charters	2	-	-100.0%	672	46	-93.2%	873	-29.5%
West Coast Charters	-	0	0.0%	-	0	0.0%	0	0.0%
TOTAL ENPLANED PASSENGERS	1,139,355	1,085,561	-4.7%	4,576,937	4,485,859	-2.0%	13,934,379	1.9%
AeroMexico	6,904	7,589	9.9%	26,904	33,859	25.9%	97,957	106.6%
AIR CANADA	-	-	0.0%	-	-	0.0%	7,526	-5.2%
ALASKA AIR	13,120	13,256	1.0%	54,046	52,130	-3.5%	174,224	0.6%
Horizon Air / Alaska	-	228	100.0%	1	1,495	149400.0%	2,372	237100.0%
Skywest / Alaska	9,636	11,528	19.6%	33,921	33,941	0.1%	112,683	15.0%
AMERICAN	48,344	45,988	-4.9%	232,782	204,623	-12.1%	596,755	-3.2%
Envoy Air (American)	2,094	160	-92.4%	2,578	4,714	82.9%	12,063	87.2%
Mesa Air	-	-	0.0%	-	-	0.0%	-	0.0%
SkyWest (American)	7,683	11,663	51.8%	34,409	50,051	45.5%	122,077	10.5%
AVELO	-	783	100.0%	-	2,856	100.0%	4,596	100.0%
DELTA	687,354	674,923	-1.8%	2,649,905	2,642,882	-0.3%	8,367,190	3.1%
SkyWest (Delta Connection)	133,063	128,366	-3.5%	520,038	488,279	-6.1%	1,566,275	-2.2%
EUROWINGS DISCOVER	-	-	0.0%	-	-	0.0%	-	-100.0%
FRONTIER	40,091	41,642	3.9%	125,461	151,840	21.0%	521,437	62.8%
HAWAIIAN	-	5,705	100.0%	-	21,458	100.0%	62,397	100.0%
JETBLUE	21,177	4,004	-81.1%	100,406	33,148	-67.0%	137,647	-55.0%
KLM ROYAL DUTCH AIRLINES	4,504	4,919	9.2%	4,504	5,377	19.4%	35,782	11.7%
SOUTHWEST	125,001	123,231	-1.4%	518,043	503,421	-2.8%	1,502,185	1.5%
SPIRIT	13,336	4,498	-66.3%	71,156	22,755	-68.0%	151,847	-32.2%
SUN COUNTRY	514	334	-35.0%	1,301	950	-27.0%	11,394	314.3%
UNITED	34,731	36,338	4.6%	212,587	218,056	2.6%	536,772	3.7%
Mesa Airlines / United Express	1,864	-	-100.0%	3,230	975	-69.8%	13,931	3.6%
SkyWest (United Express)	20,007	21,741	8.7%	64,584	70,732	9.5%	187,886	-8.6%
Charters	2	-	-100.0%	1,111	88	-92.1%	820	-54.3%
West Coast Charters	-	-	0.0%	-	-	0.0%	-	0.0%
TOTAL DEPLANED PASSENGERS	1,169,425	1,136,896	-2.8%	4,656,967	4,543,630	-2.4%	14,225,816	2.4%
TOTAL PASSENGERS*	2,308,780	2,222,457	-3.7%	9,233,904	9,029,489	-2.2%	28,160,195	2.1%
INTERNATIONAL - ENPLANED								
AEROMEXICO	3,795	4,239	11.7%	14,707	18,828	28.0%	59,584	110.9%
AIR CANADA	-	-	0.0%	-	-	0.0%	7,972	1.8%
DELTA	41,210	41,788	1.4%	171,456	172,985	0.9%	498,754	-7.1%
SkyWest (Delta Connection)	6,276	5,367	-14.5%	23,824	21,062	-11.6%	85,069	61.7%
EUROWINGS DISCOVER	-	-	0.0%	-	-	0.0%	-	-100.0%
KLM ROYAL DUTCH AIRLINES	3,937	6,036	53.3%	3,937	6,494	64.9%	35,731	18.4%
Charters	-	-	0.0%	-	-	0.0%	-	0.0%
TOTAL ENPLANED INTERNATIONAL	55,218	57,430	4.0%	213,924	219,369	2.5%	687,110	3.6%
AEROMEXICO	6,904	7,589	9.9%	26,904	33,859	25.9%	97,957	106.6%
AIR CANADA	-	-	0.0%	-	-	0.0%	7,526	-5.2%
DELTA	41,714	43,253	3.7%	174,341	172,361	-1.1%	468,038	-12.1%
SkyWest (Delta Connection)	5,732	5,671	-1.1%	22,695	22,547	-0.7%	86,320	67.3%
EUROWINGS DISCOVER	-	-	0.0%	-	-	0.0%	-	-100.0%
KLM ROYAL DUTCH AIRLINES	4,504	4,919	9.2%	4,504	5,377	19.4%	35,782	11.7%
Charters	-	-	0.0%	-	-	0.0%	-	0.0%
TOTAL DEPLANED INTERNATIONAL	58,854	61,432	4.4%	228,444	234,144	2.5%	695,623	2.4%
TOTAL INTERNATIONAL PASSENGERS	114,072	118,862	4.2%	442,368	453,513	2.5%	1,382,733	3.0%

*Includes International

SALT LAKE CITY INTERNATIONAL AIRPORT
FOUR MONTHS ENDED APRIL 2025
Based on Total Enplanements

MARKET SHARE

	April 2024	MARKET SHARE	April 2025	MARKET SHARE	Year to date 2024	MARKET SHARE	Year to date 2025	MARKET SHARE	12 MO ROLLING Ending 04/2024	12 MO ROLLING Ending 04/2025	MARKET SHARE
AEROMEXICO	3,795	0.33%	4,239	0.39%	14,707	0.32%	18,828	0.42%	28,250	59,584	0.43%
ALASKA	22,935	2.01%	24,354	2.24%	87,485	1.91%	91,123	2.03%	273,186	293,908	2.11%
AMERICAN	58,904	5.17%	56,427	5.20%	275,189	6.01%	265,616	5.92%	705,153	734,378	5.27%
AVELO	-	0.00%	698	0.06%	-	0.00%	2,893	0.06%	-	4,546	0.03%
DELTA	798,078	70.05%	766,352	70.60%	3,098,905	67.71%	3,066,161	68.35%	9,572,589	9,691,254	69.55%
EUROWINGS DISCOVER	-	0.00%	-	0.00%	-	0.00%	-	0.00%	7,700	-	0.00%
FRONTIER	37,789	3.32%	41,022	3.78%	121,654	2.66%	157,726	3.52%	314,309	508,270	3.65%
HAWAIIAN	-	0.00%	4,997	0.46%	-	0.00%	19,768	0.44%	-	60,247	0.43%
JETBLUE	22,041	1.93%	3,842	0.35%	101,302	2.21%	33,231	0.74%	302,935	135,554	0.97%
KLM ROYAL DUTCH	3,937	0.35%	6,036	0.56%	3,937	0.09%	6,494	0.14%	30,168	35,731	0.26%
SOUTHWEST	123,086	10.80%	117,015	10.78%	522,922	11.43%	511,295	11.40%	1,477,327	1,504,496	10.80%
SPIRIT	12,895	1.13%	4,416	0.41%	70,422	1.54%	23,722	0.53%	219,352	150,719	1.08%
SUN COUNTRY	553	0.05%	436	0.04%	1,501	0.03%	1,006	0.02%	3,598	10,619	0.08%
UNITED	55,340	4.86%	55,727	5.13%	278,241	6.08%	287,950	6.42%	734,947	736,228	5.28%
Charters	2	0.00%	-	0.00%	672	0.01%	46	0.00%	1,239	873	0.01%
TOTAL ENPLANEMENTS	1,139,355	100%	1,085,561	100%	4,576,937	100%	4,485,859	100%	13,678,584	13,934,379	100%

PERCENT CHANGE YOY

	April 2024	April 2025	PERCENT CHANGE	YTD 2024	YTD 2025	PERCENT CHANGE	12 MO ROLLING Ending 04/2024	12 MO ROLLING Ending 04/2025	PERCENT CHANGE
AEROMEXICO	3,795	4,239	11.70%	14,707	18,828	28.02%	28,250	59,584	110.92%
ALASKA	22,935	24,354	6.19%	87,485	91,123	4.16%	273,186	293,908	7.59%
AMERICAN	58,904	56,427	-4.21%	275,189	265,616	-3.48%	705,153	734,378	4.14%
AVELO	-	698	#DIV/0!	-	2,893	#DIV/0!	-	4,546	#DIV/0!
DELTA	798,078	766,352	-3.98%	3,098,905	3,066,161	-1.06%	9,572,589	9,691,254	1.24%
EUROWINGS DISCOVER	-	-	#DIV/0!	-	-	#DIV/0!	7,700	-	-100.00%
FRONTIER	37,789	41,022	8.56%	121,654	157,726	29.65%	314,309	508,270	61.71%
HAWAIIAN	-	4,997	100.00%	-	19,768	100.00%	-	60,247	100.00%
JETBLUE	22,041	3,842	-82.57%	101,302	33,231	-67.20%	302,935	135,554	-55.25%
KLM ROYAL DUTCH	3,937	6,036	0.00%	3,937	6,494	0.00%	30,168	35,731	18.44%
SOUTHWEST	123,086	117,015	-4.93%	522,922	511,295	-2.22%	1,477,327	1,504,496	1.84%
SPIRIT	12,895	4,416	-65.75%	70,422	23,722	-66.31%	219,352	150,719	-31.29%
SUN COUNTRY	553	436	-21.16%	1,501	1,006	-32.98%	3,598	10,619	195.14%
UNITED	55,340	55,727	0.70%	278,241	287,950	3.49%	734,947	736,228	0.17%
Charters	2	-	-100.00%	672	46	-93.15%	1,239	873	-29.54%
TOTAL ENPLANEMENTS	1,139,355	1,085,561	-4.7%	4,576,937	4,485,859	-2.0%	13,678,584	13,934,379	1.9%

**SALT LAKE CITY INTERNATIONAL AIRPORT
LANDING ACTIVITY
FOUR MONTHS ENDED APRIL 2025**

	April 2024	April 2025	CHANGE	Year to date 2024	Year to date 2025	CHANGE	12 MO ROLLING Ending 04/2025	% CHANGE
TOTAL NUMBER OF LANDINGS								
SCHEDULED CARRIERS								
AEROMEXICO	31	36	16.1%	134	155	15.7%	442	56.7%
AIR CANADA	-	-	0.0%	-	-	0.0%	79	16.2%
ALASKA	92	91	-1.1%	391	355	-9.2%	1,206	0.5%
Horizon Air / Alaska	-	3	100.0%	1	22	2100.0%	34	3300.0%
Skywest / Alaska	161	174	8.1%	547	593	8.4%	1,769	18.2%
AMERICAN	299	298	-0.3%	1,462	1,229	-15.9%	3,593	-5.4%
Mesa Air (American)	-	-	0.0%	-	-	0.0%	-	0.0%
Envoy Air (American)	27	3	-88.9%	36	78	116.7%	187	107.8%
SkyWest (American)	123	214	74.0%	560	882	57.5%	2,068	52.8%
AVELO	-	8	100.0%	-	34	100.0%	54	100.0%
DELTA	4,701	4,946	5.2%	18,168	19,189	5.6%	58,057	3.8%
SkyWest (Delta Connection)	2,203	2,237	1.5%	8,833	8,783	-0.6%	26,765	-0.7%
EUROWINGS DISCOVER	-	-	0.0%	-	-	0.0%	-	-100.0%
FRONTIER	242	261	7.9%	833	974	16.9%	3,248	63.2%
HAWAIIAN	-	30	100.0%	-	120	100.0%	354	100.0%
JETBLUE	180	30	-83.3%	781	253	-67.6%	1,001	-56.3%
KLM ROYAL DUTCH AIRLINES	11	13	18.2%	11	14	27.3%	91	3.4%
SOUTHWEST	1,000	969	-3.1%	4,078	3,994	-2.1%	11,912	-2.1%
SPIRIT	87	23	-73.6%	453	149	-67.1%	957	-33.0%
SUN COUNTRY	8	8	0.0%	22	26	18.2%	133	79.7%
UNITED	281	311	10.7%	1,568	1,682	7.3%	4,176	8.5%
Mesa / United Express	26	-	-100.0%	47	16	-66.0%	199	1.5%
Republic Airways Holdings	-	-	0.0%	-	-	0.0%	-	0.0%
SkyWest (United Express)	320	351	9.7%	1,083	1,263	16.6%	3,233	-4.1%
Trans States	-	-	0.0%	-	-	0.0%	-	0.0%
SUBTOTAL SCHEDULED CARRIERS:	9,792	10,006	2.2%	39,008	39,811	2.1%	119,558	2.5%
CHARTER CARRIERS								
ALLEGIAN AIR	-	-	0.0%	10	2	-80.0%	9	-30.8%
BOMBARDIER BUSINESS JETS	99	129	30.3%	970	998	2.9%	2,233	53.3%
BOUTIQUE AIR	-	-	0.0%	-	-	0.0%	-	0.0%
DELTA PRIVATE JETS	-	-	0.0%	-	-	0.0%	-	0.0%
EXECUTIVE JET MANAGEMENT	-	-	0.0%	-	-	0.0%	-	0.0%
FLIGHT OPTIONS	-	-	0.0%	-	-	0.0%	-	0.0%
KALITTA CHARTERS	3	-	-100.0%	15	5	-66.7%	15	-37.5%
KEYLIME AIR	-	-	0.0%	3	3	0.0%	4	33.3%
NETJETS	148	156	5.4%	1,145	1,230	7.4%	2,905	26.0%
SIERRA PACIFIC AIRLINES	-	-	0.0%	2	-	-100.0%	2	-66.7%
SWIFT AIR	-	-	0.0%	-	-	0.0%	-	0.0%
SUN COUNTRY	-	-	0.0%	-	-	0.0%	-	0.0%
XOJET	-	-	0.0%	36	-	-100.0%	11	-84.1%
OTHER CHARTER	-	-	0.0%	-	-	0.0%	1	100.0%
SUBTOTAL CHARTER CARRIERS:	250	285	14.0%	2,181	2,238	2.6%	5,180	33.6%
CARGO CARRIERS								
21 AIR LLC	23	22	-4.3%	52	84	61.5%	290	457.7%
ABX AIR INC	5	-	-100.0%	9	-	-100.0%	2	-84.6%
AIRNET 11 LLC	4	5	25.0%	27	19	-29.6%	63	-25.9%
ALPINE AVIATION	180	158	-12.2%	759	651	-14.2%	2,022	-15.3%
AMERIFLIGHT	21	-	-100.0%	88	45	-48.9%	220	-24.9%
AMERIJET INTERTIONAL	-	-	0.0%	27	-	-100.0%	-	-100.0%
CORPORATE AIR (BILLINGS)	134	48	-64.2%	510	189	-62.9%	1,241	-19.6%
EMPIRE	17	18	5.9%	68	68	0.0%	207	-1.4%
FEDERAL EXPRESS	134	92	-31.3%	515	349	-32.2%	1,272	-18.9%
GEM AIR	32	29	-9.4%	127	125	-1.6%	381	9.8%
GLOBAL CROSSING AIRLINES	-	-	0.0%	-	2	100.0%	2	-97.6%
NORTHERN AIR CARGO	-	-	0.0%	17	-	-100.0%	-	-100.0%
SWIFT AIR	-	-	0.0%	5	-	-100.0%	-	-100.0%
UPS	111	136	22.5%	395	511	29.4%	1,478	15.2%
WESTERN AIR EXPRESS	-	-	0.0%	-	-	0.0%	-	0.0%
OTHER CARGO	-	-	0.0%	3	-	-100.0%	-	-100.0%
SUBTOTAL CARGO CARRIERS:	661	508	-23.1%	2,602	2,043	-21.5%	7,178	-10.7%
TOTAL LANDINGS	10,703	10,799	0.9%	43,791	44,092	0.7%	131,916	2.6%
TOTAL LANDED WEIGHT								
SCHEDULED CARRIERS								
AEROMEXICO	4,294,798	5,336,500	24.3%	17,584,748	23,076,500	31.2%	64,629,000	104.4%
AIR CANADA	-	-	0.0%	-	-	0.0%	12,166,000	16.2%
ALASKA	14,244,900	13,932,000	-2.2%	60,205,900	54,406,000	-9.6%	184,965,800	0.0%
Horizon Air / Alaska	-	224,871	100.0%	74,957	1,649,054	2100.0%	2,548,538	3300.0%
Skywest / Alaska	12,068,077	13,042,518	8.1%	41,001,479	44,449,501	8.4%	132,598,933	18.2%
AMERICAN	49,189,888	46,771,788	-4.9%	239,421,606	199,619,336	-16.6%	590,694,904	-5.1%
Envoy Air (American)	2,023,650	224,850	-88.9%	2,698,200	5,827,620	116.0%	13,986,610	107.3%
SkyWest (American)	8,678,250	14,854,750	71.2%	39,443,900	62,035,500	57.3%	145,726,900	53.1%
AVELO	-	1,170,400	100.0%	-	4,498,400	100.0%	7,058,400	100.0%
DELTA	729,799,065	766,877,420	5.1%	2,874,628,239	2,998,983,251	4.3%	9,104,699,624	3.5%
SkyWest (Delta Connection)	165,124,714	163,827,106	-0.8%	661,712,484	643,686,089	-2.7%	1,976,057,349	0.2%

**SALT LAKE CITY INTERNATIONAL AIRPORT
LANDING ACTIVITY
FOUR MONTHS ENDED APRIL 2025**

	April 2024	April 2025	CHANGE	Year to date 2024	Year to date 2025	CHANGE	12 MO ROLLING Ending 04/2025	% CHANGE
EUROWINGS DISCOVER	-	-	0.0%	-	-	0.0%	-	-100.0%
FRONTIER	38,740,580	40,941,030	5.7%	125,950,870	148,476,364	17.9%	493,831,560	65.7%
HAWAIIAN	-	5,238,000	100.0%	-	23,216,132	100.0%	68,377,198	100.0%
JETBLUE	25,671,257	4,253,300	-83.4%	111,455,966	36,273,060	-67.5%	142,372,254	-56.4%
KLM ROYAL DUTCH AIRLINES	5,168,526	6,108,258	18.2%	5,168,526	6,578,124	27.3%	42,841,783	12.3%
SOUTHWEST	137,161,000	137,282,400	0.1%	562,162,100	566,778,200	0.8%	1,666,143,400	-0.1%
SPIRIT	14,801,826	3,978,906	-73.1%	76,179,798	22,546,884	-70.4%	143,030,936	-33.4%
SUN COUNTRY	1,170,400	1,170,400	0.0%	3,218,600	3,803,800	18.2%	19,457,900	80.3%
UNITED	39,082,300	43,465,300	11.2%	225,809,100	246,218,200	9.0%	601,489,400	7.1%
Mesa / United Express	1,948,700	-	-100.0%	3,523,200	1,199,200	-66.0%	14,915,050	1.9%
Republic Airways Holdings	-	-	0.0%	-	-	0.0%	-	0.0%
SkyWest (United Express)	21,986,239	25,887,541	17.7%	73,086,814	87,630,945	19.9%	217,059,687	-6.1%
SUBTOTAL SCHEDULED CARRIERS:	1,271,154,170	1,294,587,338	1.8%	5,123,326,487	5,180,952,160	1.1%	15,644,651,226	2.9%
CHARTER CARRIERS								
ALLEGiant AIR	0	0	0.0%	1,407,647	268,962	-80.9%	1,287,497	-29.8%
AMERISTAR	-	-	0.0%	-	-	0.0%	107,000	100.0%
BOEING COMMERCIAL AIRPLANE	-	-	0.0%	-	-	0.0%	-	0.0%
BOMBARDIER	3,682,456	4,368,113	18.6%	34,696,995	34,316,105	-1.1%	76,659,119	48.5%
BOUTIQUE AIR	-	-	0.0%	-	-	0.0%	-	0.0%
DELTA PRIVATE JETS	-	-	0.0%	-	-	0.0%	-	0.0%
EXECUTIVE JET MANAGEMENT	-	-	0.0%	-	-	0.0%	-	0.0%
FLIGHT OPTIONS	-	-	0.0%	-	-	0.0%	-	0.0%
KALITTA CHARTERS	45,900	-	-100.0%	488,620	93,120	-80.9%	258,520	-59.5%
KEYLIME AIR	-	-	0.0%	119,026	95,172	-20.0%	138,823	16.6%
MIAMI AIR	-	-	0.0%	-	-	0.0%	-	0.0%
NETJETS	4,492,442	4,699,486	4.6%	34,725,008	37,673,602	8.5%	88,915,294	29.8%
SIERRA PACIFIC	-	-	0.0%	220,000	-	-100.0%	220,000	-66.7%
SUN COUNTRY	-	-	0.0%	-	-	0.0%	-	0.0%
SWIFT AIR	-	-	0.0%	-	-	0.0%	-	0.0%
VIRGIN AMERICA	-	-	0.0%	-	-	0.0%	-	0.0%
XOJET	-	-	0.0%	1,144,800	-	-100.0%	349,800	-85.0%
OTHER CHARTER	-	-	0.0%	-	-	0.0%	-	0.0%
SUBTOTAL CHARTER CARRIERS:	8,220,798	9,067,599	10.3%	72,802,096	72,446,961	-0.5%	167,936,053	33.6%
CARGO CARRIERS								
21 AIR LLC	7,498,000	6,935,000	-7.5%	15,705,000	26,780,000	70.5%	93,214,000	493.5%
ABX AIR INC	1,371,000	-	-100.0%	2,470,000	-	-100.0%	603,000	-83.1%
AIRNET 11	61,200	77,200	26.1%	417,300	293,500	-29.7%	975,100	-25.8%
ALPINE AVIATION	2,424,800	2,299,400	-5.2%	10,410,300	9,357,900	-10.1%	28,695,800	-13.0%
AMERIFLIGHT	338,100	-	-100.0%	1,415,600	732,100	-48.3%	3,539,000	-24.0%
AMERIJET INTERNATIONAL	-	-	0.0%	7,344,000	-	-100.0%	-	-100.0%
AMERISTAR	-	-	0.0%	163,400	-	-100.0%	-	-100.0%
ATLAS AIR	-	-	0.0%	-	-	0.0%	-	-100.0%
CORPORATE AIR (BILLINGS)	1,139,000	448,400	-60.6%	4,335,000	1,646,900	-62.0%	10,588,900	-19.3%
EMPIRE	837,641	886,914	5.9%	3,313,079	3,350,564	1.1%	10,012,125	0.7%
FEDEX EXPRESS	42,139,800	30,600,300	-27.4%	168,614,900	114,462,600	-32.1%	421,459,100	-18.6%
GEM AIR	272,000	246,500	-9.4%	1,079,500	1,062,500	-1.6%	3,238,500	12.7%
GLOBAL CROSSING AIRLINES	-	-	0.0%	-	332,896	100.0%	332,896	-97.8%
KALITTA AIR LLC	-	-	0.0%	652,000	-	-100.0%	-	-100.0%
NORTHERN AIR CARGO	-	-	0.0%	2,057,000	-	-100.0%	-	-100.0%
SWIFT AIR	-	-	0.0%	720,000	-	-100.0%	-	-100.0%
UPS	33,896,400	40,104,640	18.3%	118,868,200	150,157,960	26.3%	442,257,780	14.3%
WESTERN AIR EXPRESS	-	-	0.0%	-	-	0.0%	-	0.0%
OTHER CARGO	-	-	0.0%	-	-	0.0%	-	0.0%
SUBTOTAL CARGO CARRIERS:	89,977,941	81,598,354	-9.3%	337,565,279	308,176,920	-8.7%	1,014,916,201	-1.8%
TOTAL LANDED WEIGHT	1,369,352,909	1,385,253,291	1.2%	5,533,693,862	5,561,576,041	0.5%	16,827,503,480	2.8%

**SALT LAKE CITY INTERNATIONAL AIRPORT
CARGO ACTIVITY REPORT
FOUR MONTHS ENDED APRIL 2025**

	April 2024	April 2025	CHANGE	Year to date 2024	Year to date 2025	CHANGE	12 MO ROLLING Ending 04/2025	% CHANGE
ENPLANED CARGO								
PASSENGER CARRIERS								
AIR CANADA	-	-	0.00%	-	-	0.00%	12,200	100.00%
ALASKA	21,989	25,271	14.93%	49,656	58,356	17.52%	157,389	16.84%
Horizon Air / Alaska	-	-	0.00%	-	241	100.00%	241	100.00%
Skywest / Alaska	1,390	360	-74.10%	2,813	3,685	31.00%	14,909	57.77%
AMERICAN	4,868	4,166	-14.42%	19,922	19,040	-4.43%	60,696	3.71%
American Eagle/Republic	-	-	0.00%	-	-	0.00%	-	0.00%
Envoy Air (American)	-	-	0.00%	-	354	100.00%	361	100.00%
Mesa	-	-	0.00%	-	-	0.00%	-	0.00%
SkyWest (American)	318	659	107.23%	3,119	2,276	-27.03%	8,746	0.75%
DELTA	784,941	978,845	24.70%	3,288,918	4,357,367	32.49%	11,263,228	22.61%
EW DISCOVER GMBH	-	-	-	-	-	0.00%	-	-100.00%
FRONTIER	-	-	0.00%	-	-	0.00%	-	0.00%
KLM ROYAL DUTCH	80,322	121,879	51.74%	80,322	130,902	62.97%	979,765	42.65%
SOUTHWEST	241,469	254,227	5.28%	1,149,071	944,877	-17.77%	3,000,448	-35.26%
UNITED	8,282	11,946	44.24%	19,422	47,123	142.63%	127,971	98.33%
Others	-	-	0.00%	7,706	-	-100.00%	-	-100.00%
CARGO CARRIERS								
21 AIR LLC	427,316	604,045	41.36%	1,034,304	2,271,050	119.57%	6,951,698	572.11%
FEDEX EXPRESS*	6,719,786	5,659,222	-15.78%	28,127,808	20,761,062	-26.19%	71,715,811	-17.34%
GEM AIR	19,576	21,800	11.36%	70,851	93,267	31.64%	249,676	27.41%
GLOBAL CROSSING	-	-	0.00%	-	-	0.00%	-	-100.00%
SWIFT AIR	-	-	0.00%	60,906	-	-100.00%	-	-100.00%
UPS	3,197,404	3,311,316	3.56%	13,610,418	13,634,977	0.18%	45,580,162	-5.57%
MISC CARGO	567,911	518,770	-8.65%	3,267,820	2,038,469	-37.62%	8,146,504	-18.95%
TOTAL ENPLANED CARGO (LBS)	12,075,572	11,512,506	-4.66%	50,793,056	44,363,046	-12.66%	148,269,805	-8.22%
DEPLANED CARGO								
PASSENGER CARRIERS								
AIR CANADA	-	-	0.00%	-	-	0.00%	-	0.00%
ALASKA	20,757	10,072	-51.48%	43,728	41,612	-4.84%	205,905	5.08%
Horizon Air / Alaska	-	-	0.00%	-	462	100.00%	462	100.00%
Skywest / Alaska	2,828	1,257	-55.55%	6,778	4,495	-33.68%	28,332	14.83%
AMERICAN	15,586	33,428	114.47%	85,185	126,085	48.01%	338,088	14.18%
American Eagle/Republic	-	-	0.00%	-	-	0.00%	-	0.00%
Envoy	-	-	0.00%	26	-	-100.00%	15	-94.66%
Mesa (American)	-	-	0.00%	-	-	0.00%	-	0.00%
SkyWest (American)	548	1,583	188.87%	3,679	4,142	12.58%	7,730	11.00%
DELTA	1,009,883	1,338,241	32.51%	4,790,608	4,690,762	-2.08%	14,662,914	11.48%
SkyWest (Delta Connection)	-	-	0.00%	-	-	0.00%	-	0.00%
EW DISCOVER GMBH	-	-	0.00%	-	-	0.00%	-	-100.00%
KLM ROYAL DUTCH	128,094	282,241	120.34%	128,094	311,085	142.86%	1,423,903	70.03%
SOUTHWEST	350,764	328,449	-6.36%	1,390,569	1,305,658	-6.11%	4,204,070	-2.87%
UNITED	45,455	39,168	-13.83%	133,972	167,300	24.88%	496,588	22.30%
Others	-	-	0.00%	-	-	0.00%	-	-100.00%
CARGO CARRIERS								
21 AIR LLC	938,235	785,784	-16.25%	2,061,441	3,143,593	52.49%	10,919,439	429.70%
FEDEX EXPRESS*	6,733,804	6,154,978	-8.60%	27,217,630	22,889,958	-15.90%	77,594,258	-10.85%
GEM AIR	1,289	1,450	12.49%	3,543	5,338	50.66%	21,309	53.13%
GLOBAL CROSSING	-	-	0.00%	-	-	0.00%	-	-100.00%
SWIFT AIR	-	-	0.00%	92,161	-	-100.00%	-	-100.00%
UPS	4,096,355	4,103,307	0.17%	16,067,999	15,222,768	-5.26%	51,024,815	-6.73%
MISC CARGO	628,976	236,313	-62.43%	2,703,642	999,267	-63.04%	3,945,383	-37.03%
ABX AIR	282,079	-	-100.00%	401,296	-	-100.00%	175,276	-65.66%
TOTAL DEPLANED CARGO (LBS)	13,972,574	13,316,271	-4.70%	54,729,055	48,912,525	-10.63%	164,873,211	-3.24%
TOTAL CARGO LBS	26,048,146	24,828,777	-4.68%	105,522,111	93,275,571	-11.61%	313,143,016	-5.67%

*FEDEX EXPRESS includes mail



**SALT LAKE CITY INTERNATIONAL AIRPORT
AIR TRAFFIC STATISTICS AND ACTIVITY REPORT
SIX MONTHS ENDED JUNE 2025**

	June 2025	CHANGE	Year to date 2025	CHANGE	12 MO ROLLING Ending 06/2025	CHANGE
PASSENGERS						
<i>DOMESTIC</i>						
Enplaned - Local	818,653	7.64%	4,783,155	3.59%	9,410,500	3.60%
Enplaned - Connections	415,483	-15.29%	2,144,708	-11.76%	4,495,023	-5.70%
Less International	-73,821		-356,985		-699,374	
Enplaned	1,160,315	-2.35%	6,570,878	-2.05%	13,206,149	0.15%
Deplaned - Local	874,807	8.18%	4,906,259	3.10%	9,705,648	3.33%
Deplaned - Connection	415,483	-15.29%	2,144,708	-11.76%	4,495,023	-5.70%
Less International	-72,700		-368,870		-709,636	
Deplaned	1,217,590	-1.61%	6,682,097	-2.31%	13,491,035	0.07%
TOTAL DOMESTIC	2,377,905	-1.97%	13,252,975	-2.18%	26,697,184	0.11%
<i>INTERNATIONAL</i>						
Enplaned	73,821	17.61%	356,985	5.22%	699,374	5.28%
Deplaned	72,700	17.92%	368,870	5.65%	709,636	4.76%
TOTAL INTERNATIONAL	146,521	17.77%	725,855	5.44%	1,409,010	5.02%
TOTAL PASSENGERS	2,524,426	-1.01%	13,978,830	-1.82%	28,106,194	0.34%
LANDED WEIGHT						
Air Carriers	1,378,577,300	2.50%	7,978,627,479	1.41%	15,865,887,770	2.03%
Cargo Carriers	74,903,088	-7.70%	460,218,629	-9.07%	998,669,708	-2.41%
TOTAL LANDED WEIGHT (LBS)	1,453,480,388	1.92%	8,438,846,108	0.78%	16,864,557,478	1.76%
MAIL						
Enplaned	3,245,491	238.57%	17,909,719	304.01%	29,180,643	211.04%
Deplaned	1,278,158	130.22%	7,263,716	206.55%	13,532,884	171.52%
TOTAL MAIL (LBS)	4,523,649	198.83%	25,173,435	270.06%	42,713,527	197.33%
CARGO						
Enplaned	10,818,385	-15.83%	67,050,232	-13.06%	144,623,788	-10.22%
Deplaned	12,083,897	-13.45%	73,692,019	-11.94%	160,698,911	-6.20%
TOTAL CARGO (LBS)	22,902,282	-14.59%	140,742,251	-12.48%	305,322,699	-8.15%
MAIL & CARGO						
Enplaned	5,409	-15.83%	33,525	-13.06%	72,312	-10.22%
Deplaned	6,042	-13.45%	36,846	-11.94%	80,349	-6.20%
TOTAL MAIL & CARGO (TONS)	11,451	-14.59%	70,371	-12.48%	152,661	-8.15%
AIRCRAFT OPERATIONS						
Passenger Aircraft	21,816	4.00%	127,468	2.75%	251,148	2.85%
All-Cargo Aircraft	964	-18.86%	6,050	-21.47%	13,838	-12.61%
General Aviation	4,748	-4.93%	32,245	4.61%	63,517	3.30%
Military	286	30.00%	1,556	2.71%	3,066	-6.50%
TOTAL AIRCRAFT OPERATIONS	27,814	1.59%	167,319	1.96%	331,569	2.09%

**SALT LAKE CITY INTERNATIONAL AIRPORT
PASSENGER TRAFFIC REPORT
SIX MONTHS ENDED JUNE 2025**

	June 2024	June 2025	% CHANGE	Year to date 2024	Year to date 2025	% CHANGE	12 MO ROLLING Ending 06/2025	% CHANGE
ENPLANED PASSENGERS								
AEROMEXICO	4,449	4,563	2.6%	23,612	27,891	18.1%	59,742	89.0%
AIR CANADA	1,495	1,827	22.2%	1,495	2,095	40.1%	8,572	17.3%
ALASKA	17,619	16,880	-4.2%	87,467	87,065	-0.5%	179,868	0.5%
Horizon Air / Alaska	-	299	100.0%	12	2,129	17641.7%	3,008	24966.7%
Skywest / Alaska	11,094	12,121	9.3%	55,234	60,445	9.4%	114,320	13.1%
AMERICAN	50,944	60,464	18.7%	341,236	316,649	-7.2%	604,300	-3.5%
Envoy Air	-	2,551	100.0%	2,577	9,708	276.7%	16,645	396.6%
American/Mesa Air	-	-	0.0%	-	-	0.0%	-	0.0%
SkyWest (American)	8,145	4,438	-45.5%	52,125	66,458	27.5%	119,883	31.1%
AVELO	-	-	0.0%	-	2,893	100.0%	4,546	100.0%
DELTA	735,895	708,930	-3.7%	4,029,685	3,989,418	-1.0%	8,078,320	0.5%
SkyWest (Delta Connection)	139,311	163,777	17.6%	804,212	812,041	1.0%	1,613,240	0.1%
EUROWINGS DISCOVER	-	-	0.0%	-	-	0.0%	-	-100.0%
FRONTIER	45,512	33,861	-25.6%	208,046	231,819	11.4%	495,971	37.3%
HAWAIIAN	5,077	5,437	7.1%	8,033	30,381	278.2%	62,827	682.1%
JETBLUE	15,702	6,321	-59.7%	140,016	43,896	-68.6%	107,505	-62.7%
KLM ROYAL DUTCH AIRLINES	5,431	9,609	76.9%	14,501	21,459	48.0%	40,132	26.4%
SOUTHWEST	131,049	122,239	-6.7%	777,333	755,182	-2.8%	1,493,972	-0.5%
SPIRIT	18,722	6,098	-67.4%	104,691	35,313	-66.3%	128,041	-41.0%
SUN COUNTRY	1,911	3,672	92.2%	4,543	5,926	30.4%	12,497	127.8%
UNITED	45,572	51,306	12.6%	292,611	309,457	5.8%	548,643	2.7%
Mesa Airlines (United Express)	1,639	1,439	-12.2%	6,679	4,097	-38.7%	12,828	-14.4%
SkyWest (United Express)	11,317	16,653	47.2%	92,862	110,544	19.0%	196,994	2.6%
WestJet	-	1,650	100.0%	-	2,854	100.0%	2,854	100.0%
Charters	155	1	-99.4%	827	143	-82.7%	815	-29.1%
West Coast Charters	-	0	0.0%	-	0	0.0%	0	0.0%
TOTAL ENPLANED PASSENGERS	1,251,039	1,234,136	-1.4%	7,047,797	6,927,863	-1.7%	13,905,523	0.4%
AeroMexico	7,288	7,064	-3.1%	41,795	49,217	17.8%	98,424	82.8%
AIR CANADA	1,612	1,770	9.8%	1,612	1,848	14.6%	7,762	-2.0%
ALASKA AIR	16,308	17,850	9.5%	84,010	86,642	3.1%	178,772	1.8%
Horizon Air / Alaska	-	299	100.0%	1	2,085	208400.0%	2,962	296100.0%
Skywest / Alaska	11,859	11,966	0.9%	56,842	56,581	-0.5%	112,402	9.7%
AMERICAN	52,307	63,098	20.6%	337,589	316,809	-6.2%	604,134	-3.0%
Envoy Air (American)	-	26,654	100.0%	2,938	9,233	214.3%	16,222	327.6%
Mesa Air	-	-	0.0%	-	-	0.0%	-	0.0%
SkyWest (American)	8,331	4,605	-44.7%	52,748	64,039	21.4%	117,726	-3.9%
AVELO	-	-	0.0%	-	2,856	100.0%	4,596	100.0%
DELTA	768,666	746,726	-2.9%	4,152,350	4,114,515	-0.9%	8,336,378	0.7%
SkyWest (Delta Connection)	137,667	165,005	19.9%	794,683	803,572	1.1%	1,606,923	-0.3%
EUROWINGS DISCOVER	-	-	0.0%	-	-	0.0%	-	-100.0%
FRONTIER	49,668	36,592	-26.3%	217,747	227,247	4.4%	504,558	35.6%
HAWAIIAN	5,016	5,821	16.0%	7,458	32,688	338.3%	66,169	787.2%
JETBLUE	16,902	6,843	-59.5%	139,914	44,042	-68.5%	109,033	-62.2%
KLM ROYAL DUTCH AIRLINES	5,529	9,643	74.4%	15,218	20,080	31.9%	39,771	18.2%
SOUTHWEST	138,518	127,505	-8.0%	780,409	750,275	-3.9%	1,486,673	-1.0%
SPIRIT	19,281	6,309	-67.3%	105,749	34,330	-67.5%	128,829	-41.3%
SUN COUNTRY	1,933	3,933	103.5%	4,508	6,153	36.5%	13,390	184.3%
UNITED	44,420	52,370	17.9%	292,092	313,979	7.5%	553,190	3.7%
Mesa Airlines / United Express	1,844	1,602	-13.1%	6,955	4,507	-35.2%	13,738	-11.0%
SkyWest (United Express)	11,835	17,743	49.9%	93,532	108,525	16.0%	196,731	1.7%
WestJet	-	890	100.0%	-	1,498	100.0%	1,498	100.0%
Charters	155	2	-98.7%	1,299	246	-81.1%	790	-55.6%
Air North Charter & Training	-	-	0.0%	-	-	0.0%	-	0.0%
Air Wisconsin	-	-	0.0%	-	36	100.0%	36	100.0%
Allegiant Air	155	-	-100.0%	938	208	-77.8%	746	-43.5%
Ameristar - AJI	-	-	0.0%	33	-	-100.0%	-	-100.0%
Boutique Air	-	-	0.0%	-	-	0.0%	-	0.0%
D&D Aviation	-	-	0.0%	-	-	0.0%	-	0.0%
Gem Air	-	-	0.0%	-	-	0.0%	-	0.0%
Global Crossing	-	-	0.0%	-	-	0.0%	-	0.0%
Kalitta Air	-	2	100.0%	8	2	-75.0%	8	-52.9%
Key Lime Air	-	-	0.0%	320	-	-100.0%	-	-100.0%
Kitty Hawk Charters	-	-	0.0%	-	-	0.0%	-	0.0%
Miami Air Int'l	-	-	0.0%	-	-	0.0%	-	0.0%
Republic	-	-	0.0%	-	-	0.0%	-	0.0%
Sierra Pacific	-	-	0.0%	-	-	0.0%	-	-100.0%
Sun Country	-	-	0.0%	-	-	0.0%	-	0.0%
Swift Air	-	-	0.0%	-	-	0.0%	-	0.0%
West Coast Charters	-	-	0.0%	-	-	0.0%	-	0.0%
TOTAL DEPLANED PASSENGERS	1,299,139	1,314,290	1.2%	7,189,449	7,050,967	-1.9%	14,200,671	0.3%
TOTAL PASSENGERS*	2,550,178	2,548,426	-0.1%	14,237,246	13,978,830	-1.8%	28,106,194	0.3%
INTERNATIONAL - ENPLANED								
AEROMEXICO	4,449	4,563	2.6%	23,612	27,891	18.1%	59,742	89.0%
AIR CANADA	1,495	1,827	22.2%	1,495	2,095	40.1%	8,572	17.3%
DELTA	43,091	46,428	7.7%	259,300	263,735	1.7%	501,660	-4.8%
SkyWest (Delta Connection)	8,301	9,744	17.4%	40,368	38,951	-3.5%	86,414	40.5%
EUROWINGS DISCOVER	-	-	0.0%	-	-	0.0%	-	-100.0%
KLM ROYAL DUTCH AIRLINES	5,431	9,609	76.9%	14,501	21,459	48.0%	40,132	26.4%
WESTJET	-	1,650	100.0%	-	2,854	100.0%	2,854	100.0%
Charters	-	-	0.0%	-	-	0.0%	-	0.0%
TOTAL ENPLANED INTERNATIONAL	62,767	73,821	17.6%	339,276	356,985	5.2%	699,374	5.3%
AEROMEXICO	7,288	7,064	-3.1%	41,795	49,217	17.8%	98,424	82.8%
AIR CANADA	1,612	1,770	9.8%	1,612	1,848	14.6%	7,762	-2.0%
DELTA	39,311	43,925	11.7%	252,982	257,354	1.7%	474,390	-8.1%
SkyWest (Delta Connection)	7,911	9,408	18.9%	37,550	38,873	3.5%	87,791	47.2%
EUROWINGS DISCOVER	-	-	0.0%	-	-	0.0%	-	-100.0%
KLM ROYAL DUTCH AIRLINES	5,529	9,643	74.4%	15,218	20,080	31.9%	39,771	18.2%
WESTJET	-	890	100.0%	-	1,498	100.0%	1,498	100.0%
Charters	-	-	0.0%	-	-	0.0%	-	0.0%
TOTAL DEPLANED INTERNATIONAL	61,651	72,700	17.9%	349,157	368,870	5.6%	709,636	4.8%
TOTAL INTERNATIONAL PASSENGERS	124,418	146,521	17.8%	688,433	725,855	5.4%	1,409,010	5.0%

*Includes International

SALT LAKE CITY INTERNATIONAL AIRPORT
SIX MONTHS ENDED JUNE 2025
Based on Total Enplanements

MARKET SHARE

	June 2024	MARKET SHARE	June 2025	MARKET SHARE	Year to date 2024	MARKET SHARE	Year to date 2025	MARKET SHARE	12 MO ROLLING Ending 06/2024	12 MO ROLLING Ending 06/2025	MARKET SHARE
AEROMEXICO	4,449	0.36%	4,563	0.37%	23,612	0.34%	27,891	0.40%	31,604	59,742	0.43%
ALASKA	28,713	2.30%	29,300	2.37%	142,713	2.02%	149,639	2.16%	280,088	297,196	2.14%
AMERICAN	59,089	4.72%	67,453	5.47%	395,938	5.62%	392,815	5.67%	720,852	740,828	5.33%
AVELO	-	0.00%	-	0.00%	-	0.00%	2,893	0.04%	-	4,546	0.03%
DELTA	875,206	69.96%	872,707	70.71%	4,833,897	68.59%	4,801,459	69.31%	9,649,571	9,691,560	69.70%
EUROWINGS DISCOVER	-	0.00%	-	0.00%	-	0.00%	-	0.00%	5,138	-	0.00%
FRONTIER	45,512	3.64%	33,861	2.74%	208,046	2.95%	231,819	3.35%	361,232	495,971	3.57%
HAWAIIAN	5,077	0.41%	5,437	0.44%	8,033	0.11%	30,381	0.44%	8,033	62,827	0.45%
JETBLUE	15,702	1.26%	6,321	0.51%	140,016	1.99%	43,896	0.63%	288,361	107,505	0.77%
KLM ROYAL DUTCH	5,431	0.43%	9,609	0.78%	14,501	0.21%	21,459	0.31%	31,745	40,132	0.29%
SOUTHWEST	131,049	10.48%	122,239	9.90%	777,333	11.03%	755,182	10.90%	1,501,370	1,493,972	10.74%
SPIRIT	18,722	1.50%	6,098	0.49%	104,691	1.49%	35,313	0.51%	217,001	128,041	0.92%
SUN COUNTRY	1,911	0.15%	3,672	0.30%	4,543	0.06%	5,926	0.09%	5,485	12,497	0.09%
UNITED	58,528	4.68%	69,398	5.62%	392,152	5.56%	424,098	6.12%	741,481	758,465	5.45%
WESTJET	-	0.00%	1,650	0.13%	-	0.00%	2,854	0.04%	-	1,498	0.01%
Charters	155	0.01%	1	0.00%	827	0.01%	143	0.00%	1,150	815	0.01%
TOTAL ENPLANEMENTS	1,251,039	100%	1,234,136	100%	7,047,797	100%	6,927,863	100%	13,850,416	13,904,167	100%

PERCENT CHANGE YOY

	June 2024	June 2025	PERCENT CHANGE	YTD 2024	YTD 2025	PERCENT CHANGE	12 MO ROLLING Ending 06/2024	12 MO ROLLING Ending 06/2025	PERCENT CHANGE
AEROMEXICO	4,449	4,563	2.56%	23,612	27,891	18.12%	31,604	59,742	89.03%
ALASKA	28,713	29,300	2.04%	142,713	149,639	4.85%	280,088	297,196	6.11%
AMERICAN	59,089	67,453	14.15%	395,938	392,815	-0.79%	720,852	740,828	2.77%
AVELO	-	-	#DIV/0!	-	2,893	#DIV/0!	-	4,546	#DIV/0!
DELTA	875,206	872,707	-0.29%	4,833,897	4,801,459	-0.67%	9,649,571	9,691,560	0.44%
FRONTIER	45,512	33,861	-25.60%	208,046	231,819	11.43%	361,232	495,971	37.30%
HAWAIIAN	5,077	5,437	100.00%	8,033	30,381	100.00%	8,033	62,827	100.00%
JETBLUE	15,702	6,321	-59.74%	140,016	43,896	-68.65%	288,361	107,505	-62.72%
KLM ROYAL DUTCH	5,431	9,609	0.00%	14,501	21,459	0.00%	31,745	40,132	26.42%
SOUTHWEST	131,049	122,239	-6.72%	777,333	755,182	-2.85%	1,501,370	1,493,972	-0.49%
SPIRIT	18,722	6,098	-67.43%	104,691	35,313	-66.27%	217,001	128,041	-41.00%
SUN COUNTRY	1,911	3,672	92.15%	4,543	5,926	30.44%	5,485	12,497	127.84%
UNITED	58,528	69,398	18.57%	392,152	424,098	8.15%	741,481	758,465	2.29%
WESTJET	-	1,650	#DIV/0!	-	2,854	#DIV/0!	-	1,498	#DIV/0!
Charters	155	1	-99.35%	827	143	-82.71%	1,150	815	-29.13%
TOTAL ENPLANEMENTS	1,251,039	1,234,136	-1.4%	7,047,797	6,927,863	-1.7%	13,850,416	13,904,167	0.4%

**SALT LAKE CITY INTERNATIONAL AIRPORT
LANDING ACTIVITY
SIX MONTHS ENDED JUNE 2025**

	June 2024	June 2025	CHANGE	Year to date 2024	Year to date 2025	CHANGE	12 MO ROLLING Ending 06/2025	% CHANGE
TOTAL NUMBER OF LANDINGS								
SCHEDULED CARRIERS								
AEROMEXICO	30	30	0.0%	195	216	10.8%	442	56.2%
AIR CANADA	15	18	20.0%	15	21	40.0%	85	26.9%
ALASKA	112	118	5.4%	607	586	-3.5%	1,221	-0.6%
Horizon Air / Alaska	-	4	100.0%	1	30	2900.0%	42	4100.0%
Skywest / Alaska	174	171	-1.7%	899	922	2.6%	1,746	10.1%
AMERICAN	297	378	27.3%	2,080	1,913	-8.0%	3,659	-4.7%
Mesa Air (American)	-	-	0.0%	-	-	0.0%	-	0.0%
Envoy Air (American)	-	35	100.0%	41	140	241.5%	244	343.6%
SkyWest (American)	127	79	-37.8%	843	1,117	32.5%	2,020	32.1%
AVELO	-	-	0.0%	-	34	100.0%	54	100.0%
DELTA	4,961	4,913	-1.0%	27,988	29,111	4.0%	58,159	3.1%
SkyWest (Delta Connection)	2,244	2,766	23.3%	13,329	14,172	6.3%	27,658	2.0%
EUROWINGS DISCOVER	-	-	0.0%	-	-	0.0%	-	-100.0%
FRONTIER	270	201	-25.6%	1,373	1,394	1.5%	3,128	36.4%
HAWAIIAN	30	30	0.0%	46	180	291.3%	368	700.0%
JETBLUE	118	48	-59.3%	1,069	332	-68.9%	792	-63.8%
KLM ROYAL DUTCH AIRLINES	13	25	92.3%	38	53	39.5%	103	15.7%
SOUTHWEST	1,022	1,004	-1.8%	6,118	5,972	-2.4%	11,850	-3.3%
SPIRIT	116	43	-62.9%	664	225	-66.1%	822	-41.2%
SUN COUNTRY	16	28	75.0%	54	70	29.6%	145	55.9%
UNITED	338	378	11.8%	2,194	2,403	9.5%	4,271	6.6%
Mesa / United Express	25	23	-8.0%	100	67	-33.0%	197	-12.1%
Republic Airways Holdings	-	-	0.0%	-	-	0.0%	-	0.0%
SkyWest (United Express)	198	273	37.9%	1,568	1,854	18.2%	3,339	3.7%
WESTJET	-	13	100.0%	-	25	100.0%	25	100.0%
SUBTOTAL SCHEDULED CARRIERS:	10,106	10,578	4.7%	59,222	60,837	2.7%	120,370	2.0%
CHARTER CARRIERS								
AIR WISCONSIN	-	-	-	-	1	-	1	-
ALLEGiant AIR	2	-	-100.0%	12	5	-58.3%	10	-33.3%
BOMBARDIER BUSINESS JETS	160	140	-12.5%	1,234	1,294	4.9%	2,265	41.5%
BOUTIQUE AIR	-	-	0.0%	-	-	0.0%	-	0.0%
DELTA PRIVATE JETS	-	-	0.0%	-	-	0.0%	-	0.0%
EXECUTIVE JET MANAGEMENT	-	-	0.0%	-	-	0.0%	-	0.0%
FLIGHT OPTIONS	-	-	0.0%	-	-	0.0%	-	0.0%
KALITTA CHARTERS	2	3	50.0%	17	9	-47.1%	17	-29.2%
KEYLIME AIR	-	-	0.0%	3	3	0.0%	4	33.3%
NETJETS	213	187	-12.2%	1,500	1,584	5.6%	2,904	21.3%
SIERRA PACIFIC AIRLINES	-	-	0.0%	2	-	-100.0%	2	-60.0%
SWIFT AIR	-	-	0.0%	-	-	0.0%	-	0.0%
SUN COUNTRY	-	-	0.0%	-	-	0.0%	-	0.0%
XOJET	5	-	-100.0%	47	-	-100.0%	-	-100.0%
OTHER CHARTER	-	-	0.0%	1	-	-100.0%	-	-100.0%
SUBTOTAL CHARTER CARRIERS:	382	330	-13.6%	2,816	2,896	2.8%	5,203	26.8%
CARGO CARRIERS								
21 AIR LLC	25	21	-16.0%	103	126	22.3%	281	172.8%
ABX AIR INC	-	-	0.0%	10	-	-100.0%	1	-92.9%
AIRNET 11 LLC	9	8	-11.1%	40	31	-22.5%	62	-31.9%
ALPINE AVIATION	158	154	-2.5%	1,098	965	-12.1%	1,997	-13.9%
AMERIFLIGHT	20	-	-100.0%	133	45	-66.2%	175	-40.3%
AMERIJET INTERTIONAL	-	-	0.0%	27	-	-100.0%	-	-100.0%
CORPORATE AIR (BILLINGS)	131	46	-64.9%	773	282	-63.5%	1,071	-30.6%
EMPIRE	17	16	-5.9%	103	101	-1.9%	205	-1.4%
FEDERAL EXPRESS	121	81	-33.1%	764	518	-32.2%	1,192	-23.8%
GEM AIR	28	29	3.6%	184	184	0.0%	383	11.3%
GLOBAL CROSSING AIRLINES	-	-	0.0%	-	3	100.0%	3	-92.9%
NORTHERN AIR CARGO	-	-	0.0%	17	-	-100.0%	-	-100.0%
SWIFT AIR	-	-	0.0%	5	-	-100.0%	-	-100.0%
UPS	85	127	49.4%	583	771	32.2%	1,550	24.8%
WESTERN AIR EXPRESS	-	-	0.0%	-	-	0.0%	-	0.0%
OTHER CARGO	-	-	0.0%	3	-	-100.0%	-	-100.0%
SUBTOTAL CARGO CARRIERS:	594	482	-18.9%	3,843	3,026	-21.3%	6,920	-12.8%
TOTAL LANDINGS	11,082	11,390	2.8%	65,881	66,759	1.3%	132,493	1.9%
TOTAL LANDED WEIGHT								
SCHEDULED CARRIERS								
AEROMEXICO	4,336,500	4,460,000	2.8%	26,261,248	32,186,500	22.6%	65,062,500	88.0%
AIR CANADA	2,310,000	2,772,000	20.0%	2,310,000	3,234,000	40.0%	13,090,000	26.9%
ALASKA	17,208,600	18,384,500	6.8%	93,331,800	90,273,400	-3.3%	187,707,300	-0.8%
Horizon Air / Alaska	-	299,828	100.0%	74,957	2,248,710	2900.0%	3,148,194	4100.0%
Skywest / Alaska	13,042,518	12,817,647	-1.7%	67,386,343	69,110,354	2.6%	130,874,922	10.1%
AMERICAN	49,922,516	61,648,918	23.5%	341,489,722	310,110,542	-9.2%	599,117,994	-4.9%
Envoy Air (American)	-	2,623,250	100.0%	3,072,950	10,474,520	240.9%	18,258,760	342.9%
SkyWest (American)	9,176,800	5,531,500	-39.7%	59,796,150	78,392,650	31.1%	141,731,800	31.1%
AVELO	-	-	0.0%	-	4,498,400	100.0%	7,058,400	100.0%
DELTA	773,438,577	771,056,749	-0.3%	4,406,112,929	4,545,017,212	3.2%	9,119,248,895	2.9%

**SALT LAKE CITY INTERNATIONAL AIRPORT
LANDING ACTIVITY
SIX MONTHS ENDED JUNE 2025**

	June 2024	June 2025	CHANGE	Year to date 2024	Year to date 2025	CHANGE	12 MO ROLLING Ending 06/2025	% CHANGE
SkyWest (Delta Connection)	167,507,222	202,661,467	21.0%	997,987,058	1,038,116,831	4.0%	2,034,213,517	1.7%
EUROWINGS DISCOVER	-	-	0.0%	-	-	0.0%	-	-100.0%
FRONTIER	42,047,764	32,135,376	-23.6%	210,046,398	216,308,017	3.0%	477,567,685	37.2%
HAWAIIAN	5,238,180	5,238,000	0.0%	8,031,876	33,692,312	319.5%	70,821,502	781.8%
JETBLUE	16,693,676	6,444,600	-61.4%	152,382,280	46,732,160	-69.3%	111,905,040	-64.2%
KLM ROYAL DUTCH AIRLINES	6,108,258	11,701,662	91.6%	17,854,908	24,896,899	39.4%	48,474,176	22.2%
SOUTHWEST	142,896,000	142,222,900	-0.5%	843,973,800	847,155,600	0.4%	1,664,709,100	-1.3%
SPIRIT	17,001,152	6,601,939	-61.2%	109,282,400	34,264,844	-68.6%	121,646,294	-43.0%
SUN COUNTRY	2,340,800	4,096,400	75.0%	7,900,200	10,241,000	29.6%	21,213,500	55.9%
UNITED	48,298,800	53,917,000	11.6%	314,899,700	348,936,400	10.8%	615,117,000	5.5%
Mesa / United Express	1,873,750	1,723,850	-8.0%	7,495,550	5,021,650	-33.0%	14,765,150	-11.8%
Republic Airways Holdings	-	-	0.0%	-	-	0.0%	-	0.0%
SkyWest (United Express)	12,709,872	20,049,110	57.7%	105,125,688	130,851,649	24.5%	228,241,517	4.7%
WESTJET	-	1,788,700	100.0%	-	3,420,500	100.0%	3,420,500	100.0%
SUBTOTAL SCHEDULED CARRIERS:	1,332,150,985	1,368,175,396	2.7%	7,774,815,957	7,885,184,150	1.4%	15,697,393,746	1.9%
CHARTER CARRIERS								
AIR WISCONSIN	-	-	0.0%	-	47,000	100.0%	47,000	100.0%
ALLEGIAN AIR	291,010	0	-100.0%	1,698,657	705,477	-58.5%	1,433,002	-32.5%
AMERISTAR	-	-	0.0%	107,000	-	-100.0%	-	-100.0%
BOEING COMMERCIAL AIRPLANE	-	-	0.0%	-	-	0.0%	-	0.0%
BOMBARDIER	5,638,884	4,510,923	-20.0%	43,527,876	43,958,613	1.0%	77,470,746	36.5%
BOUTIQUE AIR	-	-	0.0%	-	-	0.0%	-	0.0%
DELTA PRIVATE JETS	-	-	0.0%	-	-	0.0%	-	0.0%
EXECUTIVE JET MANAGEMENT	-	-	0.0%	-	-	0.0%	-	0.0%
FLIGHT OPTIONS	-	-	0.0%	-	-	0.0%	-	0.0%
KALITTA CHARTERS	30,600	45,900	50.0%	519,220	155,020	-70.1%	289,820	-54.6%
KEYLIME AIR	-	-	0.0%	119,026	95,172	-20.0%	138,823	16.6%
MIAMI AIR	-	-	0.0%	-	-	0.0%	-	0.0%
NETJETS	6,644,270	5,845,081	-12.0%	45,554,114	48,339,849	6.1%	88,752,435	24.0%
SIERRA PACIFIC	-	-	0.0%	220,000	-	-100.0%	220,000	-60.0%
SUN COUNTRY	-	-	0.0%	-	-	0.0%	-	0.0%
SWIFT AIR	-	-	0.0%	-	-	0.0%	-	0.0%
VIRGIN AMERICA	-	-	0.0%	-	-	0.0%	-	0.0%
XOJET	159,000	-	-100.0%	1,494,600	-	-100.0%	-	-100.0%
OTHER CHARTER	-	-	0.0%	-	-	0.0%	-	0.0%
SUBTOTAL CHARTER CARRIERS:	12,763,764	10,401,904	-18.5%	93,240,493	93,301,131	0.1%	168,351,826	25.8%
CARGO CARRIERS								
21 AIR LLC	7,967,000	6,846,000	-14.1%	32,051,000	40,159,000	25.3%	90,247,000	181.6%
ABX AIR INC	-	-	0.0%	2,790,000	-	-100.0%	283,000	-92.7%
AIRNET 11	139,800	125,900	-9.9%	619,700	481,300	-22.3%	960,500	-31.8%
ALPINE AVIATION	2,159,000	2,235,000	3.5%	15,036,200	13,934,900	-7.3%	28,646,900	-10.7%
AMERIFLIGHT	322,000	-	-100.0%	2,139,500	732,100	-65.8%	2,815,100	-39.5%
AMERIJET INTERNATIONAL	-	-	0.0%	7,344,000	-	-100.0%	-	-100.0%
AMERISTAR	-	-	0.0%	163,400	-	-100.0%	-	-100.0%
ATLAS AIR	-	-	0.0%	-	-	0.0%	-	-100.0%
CORPORATE AIR (BILLINGS)	1,113,500	552,600	-50.4%	6,570,500	2,760,600	-58.0%	9,467,100	-27.8%
EMPIRE	796,868	788,368	-1.1%	4,996,861	4,976,573	-0.4%	9,954,352	0.3%
FEDEX EXPRESS	40,733,600	25,964,800	-36.3%	250,400,900	167,188,100	-33.2%	392,398,600	-23.8%
GEM AIR	238,000	246,500	3.6%	1,564,000	1,564,000	0.0%	3,255,500	13.1%
GLOBAL CROSSING AIRLINES	-	-	0.0%	-	475,094	100.0%	475,094	-93.2%
KALITTA AIR LLC	-	-	0.0%	652,000	-	-100.0%	-	-100.0%
NORTHERN AIR CARGO	-	-	0.0%	2,057,000	-	-100.0%	-	-100.0%
SWIFT AIR	-	-	0.0%	720,000	-	-100.0%	-	-100.0%
UPS	27,683,980	38,143,920	37.8%	178,748,420	228,089,160	27.6%	460,308,760	22.1%
WESTERN AIR EXPRESS	-	-	0.0%	-	-	0.0%	-	0.0%
OTHER CARGO	-	-	0.0%	-	-	0.0%	-	0.0%
SUBTOTAL CARGO CARRIERS:	81,153,748	74,903,088	-7.7%	505,853,481	460,360,827	-9.0%	998,811,906	-2.8%
TOTAL LANDED WEIGHT	1,426,068,497	1,453,480,388	1.9%	8,373,909,931	8,438,846,108	0.8%	16,864,557,478	1.8%

**SALT LAKE CITY INTERNATIONAL AIRPORT
CARGO ACTIVITY REPORT
SIX MONTHS ENDED JUNE 2025**

	June 2024	June 2025	CHANGE	Year to date 2024	Year to date 2025	CHANGE	12 MO ROLLING Ending 06/2025	% CHANGE
ENPLANED CARGO								
PASSENGER CARRIERS								
AIR CANADA	-	-	0.00%	-	-	0.00%	12,200	100.00%
ALASKA	13,940	17,138	22.94%	75,706	97,368	28.61%	170,351	23.96%
Horizon Air / Alaska	-	204	100.00%	-	646	100.00%	646	100.00%
Skywest / Alaska	3,663	10,343	182.36%	8,185	24,573	200.22%	30,425	158.96%
AMERICAN	6,035	4,320	-28.42%	31,301	27,280	-12.85%	57,557	-0.13%
American Eagle/Republic	-	-	0.00%	-	-	0.00%	-	0.00%
Envoy Air (American)	-	-	0.00%	-	579	100.00%	586	100.00%
Mesa	-	-	0.00%	-	-	0.00%	-	0.00%
SkyWest (American)	812	436	-46.31%	4,521	3,167	-29.95%	8,235	-13.32%
DELTA	788,693	783,882	-0.61%	4,903,864	6,052,179	23.42%	11,343,094	20.82%
EW DISCOVER GMBH	-	-	-	-	-	0.00%	-	-100.00%
FRONTIER	-	-	0.00%	-	-	0.00%	-	0.00%
KLM ROYAL DUTCH	162,953	83,206	-48.94%	359,204	305,553	-14.94%	875,534	12.22%
SOUTHWEST	218,504	248,851	13.89%	1,653,872	1,470,526	-11.09%	3,021,296	-28.61%
UNITED	5,373	8,647	60.93%	30,668	61,276	99.80%	130,878	95.54%
Others	-	-	0.00%	7,706	-	-100.00%	-	-100.00%
CARGO CARRIERS								
21 AIR LLC	570,428	630,493	10.53%	2,251,150	3,617,902	60.71%	7,081,704	214.58%
FEDEX EXPRESS*	7,027,405	5,192,307	-26.11%	42,291,523	31,825,693	-24.75%	68,616,727	-21.23%
GEM AIR	19,229	18,647	-3.03%	108,835	132,477	21.72%	250,902	28.11%
GLOBAL CROSSING	-	-	0.00%	-	-	0.00%	-	-100.00%
SWIFT AIR	-	-	0.00%	60,906	-	-100.00%	-	-100.00%
UPS	3,336,435	3,309,510	-0.81%	20,587,651	20,410,438	-0.86%	45,378,390	-2.43%
MISC CARGO	699,239	510,401	-27.01%	4,751,167	3,020,575	-36.42%	7,645,263	-22.70%
TOTAL ENPLANED CARGO (LBS)	12,852,709	10,818,385	-15.83%	77,126,259	67,050,232	-13.06%	144,623,788	-10.22%
DEPLANED CARGO								
PASSENGER CARRIERS								
AIR CANADA	-	-	0.00%	-	-	0.00%	-	0.00%
ALASKA	16,582	19,065	14.97%	80,922	75,165	-7.11%	202,264	2.25%
Horizon Air / Alaska	-	1,105	100.00%	-	3,756	100.00%	3,756	100.00%
Skywest / Alaska	3,374	10,492	210.97%	12,595	25,355	101.31%	43,375	75.13%
AMERICAN	27,907	25,055	-10.22%	136,814	171,187	25.12%	331,561	16.33%
American Eagle/Republic	-	-	0.00%	-	-	0.00%	-	0.00%
Envoy	-	-	0.00%	26	145	457.69%	160	515.38%
Mesa (American)	-	-	0.00%	-	-	0.00%	-	0.00%
SkyWest (American)	193	150	-22.28%	4,169	6,058	45.31%	9,156	24.32%
DELTA	1,218,339	1,282,681	5.28%	7,195,483	7,080,409	-1.60%	14,647,686	6.29%
SkyWest (Delta Connection)	-	-	0.00%	-	-	0.00%	-	0.00%
EW DISCOVER GMBH	-	-	0.00%	-	-	0.00%	-	-100.00%
KLM ROYAL DUTCH	164,662	272,619	65.56%	448,740	803,893	79.14%	1,596,065	66.07%
SOUTHWEST	344,151	325,493	-5.42%	2,100,386	1,974,585	-5.99%	4,163,180	-3.98%
UNITED	34,519	39,243	13.69%	207,312	266,525	28.56%	522,473	20.75%
Others	-	-	0.00%	-	-	0.00%	-	0.00%
CARGO CARRIERS								
21 AIR LLC	960,045	689,797	-28.15%	3,981,043	4,552,515	14.35%	10,408,759	161.46%
FEDEX EXPRESS*	6,970,872	5,423,198	-22.20%	41,666,034	34,088,598	-18.19%	74,344,494	-14.25%
GEM AIR	775	2,256	191.10%	5,714	9,386	64.26%	23,186	86.28%
GLOBAL CROSSING	-	-	0.00%	-	-	0.00%	-	-100.00%
SWIFT AIR	-	-	0.00%	92,161	-	-100.00%	-	-100.00%
UPS	3,900,207	3,768,700	-3.37%	24,274,292	23,105,971	-4.81%	50,701,725	-4.72%
MISC CARGO	319,956	224,043	-29.98%	3,477,158	1,528,471	-56.04%	3,701,071	-41.47%
ABX AIR	-	-	0.00%	502,607	-	-100.00%	73,965	-87.91%
TOTAL DEPLANED CARGO (LBS)	13,961,582	12,083,897	-13.45%	83,682,849	73,692,019	-11.94%	160,698,911	-6.20%
TOTAL CARGO LBS	26,814,291	22,902,282	-14.59%	160,809,108	140,742,251	-12.48%	305,322,699	-8.15%

*FEDEX EXPRESS includes mail



COMPARISON OF ON TIME OPERATIONS

February 2025

ARRIVALS

Airport		Flights	% On Time	Rank
BWI	BALTIMORE/WASHINGTON INTL	6,568	84.0	1
MDW	CHICAGO MIDWAY	4,744	83.3	7
PHX	PHOENIX SKY HARBOR INTL	15,489	83.3	3
SLC	SALT LAKE CITY INTL	8,793	82.4	4
IAH	HOUSTON GEORGE BUSH	12,371	81.9	5
MSP	MINNEAPOLIS-ST. PAUL INTL	8,967	81.6	6
AUS	AUSTIN	5,878	81.4	7
ATL	HARTSFIELD-JACKSON ATLANTA INTL	25,358	80.7	8
LAX	LOS ANGELES INTL	14,166	80.4	9
BNA	NASHVILLE INTL	7,037	80.1	10
IAD	WASHINGTON DULLES	6,205	79.8	11
LAS	LAS VEGAS MCCARRAN INTL	14,350	78.7	12
DEN	DENVER INTL	22,808	78.6	13
DTW	DETROIT METRO WAYNE CNTY	9,708	78.5	14
DFW	DALLAS-FT. WORTH REGIONAL	22,922	78.4	15
MIA	MIAMI INTL	9,448	78.4	16
MCO	ORLANDO INTL	12,573	77.8	17
EWR	NEWARK LIBERTY INTERNATIONAL	10,619	77.7	18
CLT	CHARLOTTE DOUGLAS	18,647	77.5	19
JFK	NEW YORK JFK INTL	9,099	77.4	20
LGA	NEW YORK LAGUARDIA	12,386	77.3	21
FLL	FT. LAUDERDALE	7,383	77.0	22
SEA	SEATTLE-TACOMA INTL	12,252	77.0	23
ORD	CHICAGO O HARE	23,304	76.8	24
TPA	TAMPA INTL	6,311	76.5	25
BOS	BOSTON LOGAN INTL	10,392	76.2	26
SAN	SAN DIEGO LINDBERGH FIELD	6,773	75.3	27
PHL	PHILADELPHIA INTL	8,331	74.9	28
SFO	SAN FRANCISCO INTL	10,305	72.0	29
DCA	RONALD REAGAN NATIONAL	11,376	53.6	30
AVERAGES		11,819		

DEPARTURES

Airport		Flights	% On Time	Rank
IAD	WASHINGTON DULLES	3,742	84.6	1
LAX	LOS ANGELES INTL	13,788	83.5	2
PHX	PHOENIX SKY HARBOR INTL	15,458	83.4	3
MDW	CHICAGO MIDWAY	4,741	82.8	4
MSP	MINNEAPOLIS-ST. PAUL INTL	7,767	82.4	5
SLC	SALT LAKE CITY INTL	8,786	82.4	6
AUS	AUSTIN	5,840	81.6	7
SAN	SAN DIEGO LINDBERGH FIELD	6,607	80.8	8
BNA	NASHVILLE INTL	6,912	80.4	9
EWR	NEWARK LIBERTY INTERNATIONAL	9,403	80.0	10
IAH	HOUSTON GEORGE BUSH	8,470	79.7	11
LGA	NEW YORK LAGUARDIA	10,054	79.7	12
TPA	TAMPA INTERNATIONAL	6,306	79.4	13
BWI	BALTIMORE/WASHINGTON INTL	6,571	79.3	14
SFO	SAN FRANCISCO INTL	9,936	79.3	15
JFK	NEW YORK JFK INTL	7,850	79.2	16
LAS	LAS VEGAS Harry Reid INTL	14,178	79.0	17
MCO	ORLANDO INTL	12,575	79.0	18
DTW	DETROIT METRO WAYNE CNTY	8,580	78.2	19
SEA	SEATTLE-TACOMA INTL	10,738	78.2	20
PHL	PHILADELPHIA INTL	6,359	78.0	21
ORD	CHICAGO O HARE	19,989	77.7	22
ATL	HARTSFIELD-JACKSON ATLANTA INTL	22,640	77.4	23
MIA	MIAMI INTL	9,447	77.2	24
FLL	FT. LAUDERDALE	7,387	77.1	25
DFW	DALLAS-FT. WORTH REGIONAL	22,869	76.7	26
DEN	DENVER INTERNATIONAL	22,816	76.5	27
CLT	CHARLOTTE DOUGLAS	15,605	75.8	28
BOS	BOSTON LOGAN INTERNATIONAL	10,292	75.7	29
DCA	RONALD REAGAN NATIONAL	10,981	61.8	30
AVERAGES		10,890		

ON TIME ARRIVAL PERFORMANCE AT SLC

By Carrier

Air Carrier		Flights	% On Time
DL	DELTA	6,004	84.0%
HA	HAWAIIAN	28	82.1%
NK	SPIRIT	56	82.1%
F9	FRONTIER	215	81.9%
WN	SOUTHWEST	992	80.5%
AA	AMERICAN	531	78.3%
AS	ALASKA	204	77.5%
UA	UNITED	699	77.3%
B6	JETBLUE	64	62.5%
		8,793	83.5%

Source: DOT Air Travel Consumer Report



COMPARISON OF ON TIME OPERATIONS

April 2025

ARRIVALS

	Airport	Flights	% On Time	Rank
SLC	SALT LAKE CITY INTL	9,511	86.2	1
IAD	WASHINGTON DULLES	8,285	84.8	7
LAX	LOS ANGELES INTL	16,164	83.8	3
MDW	CHICAGO MIDWAY	6,050	83.8	4
SEA	SEATTLE-TACOMA INTL	14,442	83.5	5
DTW	DETROIT METRO WAYNE CNTY	11,453	83.3	6
IAH	HOUSTON GEORGE BUSH	13,694	82.5	7
BWI	BALTIMORE/WASHINGTON INTL	8,139	82.4	8
BOS	BOSTON LOGAN INTL	12,521	82.1	9
PHX	PHOENIX SKY HARBOR INTL	18,202	82.0	10
JFK	NEW YORK JFK INTL	10,269	81.5	11
CLT	CHARLOTTE DOUGLAS	20,602	80.9	12
FLL	FT. LAUDERDALE	7,827	80.7	13
MCO	ORLANDO INTL	14,183	80.7	14
ATL	HARTSFIELD-JACKSON ATLANTA INTL	28,819	80.6	15
LGA	NEW YORK LAGUARDIA	13,982	80.6	16
MSP	MINNEAPOLIS-ST. PAUL INTL	10,497	80.6	17
LAS	LAS VEGAS MCCARRAN INTL	16,196	80.4	18
SFO	SAN FRANCISCO INTL	12,590	80.3	19
AUS	AUSTIN	7,329	80.1	20
MIA	MIAMI INTL	9,889	79.6	21
TPA	TAMPA INTL	7,294	78.8	22
ORD	CHICAGO O HARE	28,821	78.7	23
BNA	NASHVILLE INTL	9,023	78.3	24
PHL	PHILADELPHIA INTL	10,801	77.5	25
SAN	SAN DIEGO LINDBERGH FIELD	8,102	76.8	26
DCA	RONALD REAGAN NATIONAL	12,395	76.2	27
DEN	DENVER INTL	25,281	73.7	28
DFW	DALLAS-FT. WORTH REGIONAL	25,732	69.5	29
EWI	NEWARK LIBERTY INTERNATIONAL	10,192	68.2	30
AVERAGES		13,610		

DEPARTURES

	Airport	Flights	% On Time	Rank
IAD	WASHINGTON DULLES	5,036	87.0	1
SLC	SALT LAKE CITY INTL	9,515	86.4	2
SFO	SAN FRANCISCO INTL	12,173	86.1	3
JFK	NEW YORK JFK INTL	8,628	84.7	4
LAX	LOS ANGELES INTL	15,737	84.6	5
LGA	NEW YORK LAGUARDIA	11,335	84.1	6
DTW	DETROIT METRO WAYNE CNTY	10,058	83.8	7
SEA	SEATTLE-TACOMA INTL	12,716	83.0	8
MSP	MINNEAPOLIS-ST. PAUL INTL	9,168	82.9	9
BOS	BOSTON LOGAN INTERNATIONAL	12,413	82.6	10
MDW	CHICAGO MIDWAY	6,051	81.4	11
PHX	PHOENIX SKY HARBOR INTL	18,188	81.0	12
MCO	ORLANDO INTL	14,194	80.8	13
TPA	TAMPA INTERNATIONAL	7,297	80.8	14
FLL	FT. LAUDERDALE	7,833	80.4	15
IAH	HOUSTON GEORGE BUSH	9,510	80.0	16
SAN	SAN DIEGO LINDBERGH FIELD	7,959	79.5	17
AUS	AUSTIN	7,311	79.3	18
ORD	CHICAGO O HARE	26,136	79.3	19
LAS	LAS VEGAS Harry Reid INTL	16,034	79.0	20
DCA	RONALD REAGAN NATIONAL	12,034	78.9	21
PHL	PHILADELPHIA INTL	8,603	78.8	22
BWI	BALTIMORE/WASHINGTON INTL	8,107	78.5	23
BNA	NASHVILLE INTL	8,796	78.4	24
ATL	HARTSFIELD-JACKSON ATLANTA INTL	25,490	77.7	25
CLT	CHARLOTTE DOUGLAS	17,226	77.2	26
MIA	MIAMI INTL	9,878	76.7	27
EWI	NEWARK LIBERTY INTERNATIONAL	9,507	76.6	28
DEN	DENVER INTERNATIONAL	25,280	75.3	29
DFW	DALLAS-FT. WORTH REGIONAL	25,689	68.8	30
AVERAGES		12,597		

ON TIME ARRIVAL PERFORMANCE AT SLC

By Carrier

	Air Carrier	Flights	% On Time
DL	DELTA	6,800	88.5%
NK	SPIRIT	23	87.0%
F9	FRONTIER	246	85.0%
UA	UNITED	643	82.6%
WN	SOUTHWEST	968	81.1%
AS	ALASKA	265	80.4%
HA	HAWAIIAN	30	76.7%
AA	AMERICAN	506	75.5%
B6	JETBLUE	30	70.0%
		9,511	85.4%

Source: DOT Air Travel Consumer Report

SALT LAKE CITY DEPARTMENT OF AIRPORTS**(An Enterprise Fund of Salt Lake City Corporation)****Statements of Net Position (Unaudited)****(Amounts in Thousands)**

<i>As of April 30,</i>	2025	2024
ASSETS		
Current Assets		
Cash and cash equivalents	\$ 162,832	\$ 319,595
Restricted cash and cash equivalents	405,968	401,463
Restricted investments	71,848	67,364
Airline and rental fees receivable	54,852	39,750
Loans receivable	4,292	5,559
Leases receivable	39,574	44,577
Other assets	10,008	4,718
Total current assets	749,374	883,026
Noncurrent Assets		
Restricted cash and cash equivalents	72,018	43,143
Restricted investments	164,919	125,861
Loans receivable	28,173	10,622
Leases receivable	123,687	159,675
Other assets	249	249
Total noncurrent assets and investments	389,046	339,550
Capital assets		
Land	113,441	113,216
Building and improvements	4,221,328	3,696,051
Equipment	443,729	361,519
Leased Asset	504	504
Subscription Asset	3,807	3,697
Construction in progress	1,241,988	1,384,322
Total capital assets - at cost	6,024,797	5,559,309
Less accumulated depreciation	1,411,799	1,232,481
Net capital assets	4,612,998	4,326,828
Total noncurrent assets	5,002,044	4,666,378
Total Assets	5,751,418	5,549,404
Deferred Outflows of Resources	10,272	7,926
Total Assets and Deferred Outflows of Resources	\$ 5,761,690	\$ 5,557,330

SALT LAKE CITY DEPARTMENT OF AIRPORTS**(An Enterprise Fund of Salt Lake City Corporation)****Statements of Net Position (Unaudited)****(Amounts in Thousands)**

As of April 30,	2025	2024
LIABILITIES		
Current Liabilities		
Accounts payable	\$ 46,842	\$ 44,947
Accrued compensation	1,184	1,304
Interest payable	54,374	54,792
Other accrued liabilities	12,131	21,277
Current bonds payable	53,670	25,065
Subscription Liability	200	560
Line of credit	200,000	-
Total current liabilities	368,401	147,945
Noncurrent Liabilities		
Revenue bonds payable	3,640,812	3,713,868
Noncurrent compensation liability	4,710	5,079
Net pension liability	5,599	4,248
Other accrued liabilities	29,191	38,465
Subscription Liability	752	892
Total noncurrent liabilities	3,681,064	3,762,552
Total Liabilities	4,049,465	3,910,497
Deferred Inflows of Resources		
Deferred inflows - revenue collected in advance	19,005	9,245
Deferred inflows - leases	163,261	204,253
Deferred inflows - pension	76	106
Total Deferred Inflows of Resources	182,342	213,604
NET POSITION		
Net investment in capital assets	1,121,183	1,037,659
Restricted for		
Capital projects	102,491	62,040
Debt service	173,876	130,063
Unrestricted	132,333	203,467
Net Position	1,529,883	1,433,229
Total Liabilities, Deferred Inflows of Resources, and Net Position	\$ 5,761,690	\$ 5,557,330

SALT LAKE CITY DEPARTMENT OF AIRPORTS**(An Enterprise Fund of Salt Lake City Corporation)****Statements of Revenues, Expenses, and Changes in Fund Net Position (Unaudited)****(Amounts in Thousands)**

<i>for the ten month period ended April,</i>	2025	2024
Operating Revenues		
Airline revenue	\$ 253,061	\$ 142,100
Terminal concessions	25,484	23,571
Landside concessions	103,535	97,453
Lease revenue	10,595	9,756
General aviation	1,577	3,649
State aviation tax	3,045	2,318
Other revenue	7,260	5,541
Operating revenues	404,557	284,388
Less airline revenue sharing	(17,668)	(11,989)
Total operating revenues	386,889	272,399
Operating Expenses		
Salaries and benefits	60,208	55,015
Materials and supplies	15,601	14,843
Maintenance contracts	23,527	20,920
Charges and services	23,880	27,609
Utilities	6,852	7,208
Inter-governmental	24,860	20,648
Other expenses	10,168	5,468
Total operating expenses before depreciation	165,096	151,711
Operating Income Before Depreciation	221,793	120,688
Depreciation Expense	160,282	138,803
Operating Income (Loss)	61,511	(18,115)
Non-Operating Revenues (Expenses)		
Passenger facility charges	43,282	42,572
Customer facility charges	13,757	13,778
Interest income	32,982	41,475
Interest expense	(130,178)	(127,497)
Bond issuance costs	(196)	(2,327)
Other revenue (expenses), net	18	227
Net non-operating loss	(40,335)	(31,772)
Capital Contributions		
Contributions and grants	32,898	69,871
Total capital contributions	32,898	69,871
Net Position		
Increase in net position	54,074	19,984
Net Position, beginning of period	1,475,809	1,413,245
Net Position, end of period	\$ 1,529,883	\$ 1,433,229

SALT LAKE CITY DEPARTMENT OF AIRPORTS

(An Enterprise Fund of Salt Lake City Corporation)

Operating Revenues and Expenditures to Budget (Unaudited)

(Amounts in Thousands)

	Jul 2024 - Apr 2025 ACTUALS	Jul 2024 - Apr 2025 BUDGET	SURPLUS/ DEFICIT	PERCENT CHANGE
Revenues				
Landing Fees	\$ 72,644	\$ 75,507	\$ (2,863)	-3.8%
Fuel Farm	3,033	3,034	(1)	0.0%
Aircraft Remain Overnight Fees	564	725	(161)	-22.2%
Cargo Bldg & Ramp Use Fees	1,737	1,759	(22)	-1.3%
Extraordinary Service Charges	46	70	(24)	-34.3%
Passenger Boarding Bridges	1,791	1,793	(2)	-0.1%
Tenant Telephone Fees	43	48	(5)	-10.4%
Terminal Rents	167,719	163,185	4,534	2.8%
General Aviation Hangars	928	916	12	1.3%
FBO Hangars / Fuel Oil Royalty	649	651	(2)	-0.3%
Flight Kitchens	2,750	2,612	138	5.3%
Other Buildings & Office Space	6,553	7,171	(618)	-8.6%
Food Service & Vending	15,237	15,368	(131)	-0.9%
News / Gift Shops	9,497	10,213	(716)	-7.0%
Car Rental	34,759	33,132	1,627	4.9%
Leased Site Areas	5,606	5,140	466	9.1%
Auto Parking / Ground Transportation	68,776	64,881	3,895	6.0%
Advertising	749	491	258	52.5%
State Aviation Fuel Tax	3,045	2,428	617	25.4%
Military	120	131	(11)	-8.4%
Glycol Recycling Sales	359	417	(58)	-13.9%
Auxiliary Airport Fuel Sales	2,330	1,991	339	17.0%
Other	5,622	1,207	4,415	365.8%
Less: Airline Revenue Sharing	(17,668)	(16,823)	(845)	5.0%
Total Operating Revenues	386,889	376,047	10,842	2.9%
Expenses				
Salaries & Wages	45,485	44,426	(1,059)	-2.4%
Employee Benefits	15,370	19,567	4,197	21.4%
Maintenance Supplies	7,508	12,483	4,975	39.9%
Automotive Supplies	3,267	4,958	1,691	34.1%
Other Supplies	4,826	4,756	(70)	-1.5%
Insurance Premiums	3,447	3,892	445	11.4%
Janitorial Service	17,147	19,573	2,426	12.4%
Maintenance Contracts	6,380	8,035	1,655	20.6%
Other Contractual Services	15,623	20,479	4,856	23.7%
Professional & Tech Services	8,257	12,578	4,321	34.4%
Utilities	6,852	6,340	(512)	-8.1%
Administrative Service Fees	6,599	6,488	(111)	-1.7%
Aircraft Rescue Fire Fighting	6,210	6,210	-	0.0%
Police Services	12,051	12,051	-	0.0%
Other Expenses	6,440	2,794	(3,646)	-130.5%
Contingency Reserve	281	1,000	719	71.9%
Operating Expenses Before Capitalized Salaries	165,743	185,630	19,887	10.7%
Capitalized Salaries	647	647	-	0.0%
Total Operating Expenses	165,096	184,983	19,887	10.8%
Operating Income	\$ 221,793	\$ 191,064	\$ 30,729	16.1%

SALT LAKE CITY DEPARTMENT OF AIRPORTS

(An Enterprise Fund of Salt Lake City Corporation)

Operating Revenues and Expenditures to Prior Year (Unaudited)

(Amounts in Thousands)

	Jul 2024 - Apr 2025	Jul 2023 - Apr 2024	DOLLAR CHANGE	PERCENT CHANGE
Revenues				
Landing Fees	\$ 72,644	\$ 52,447	\$ 20,197	38.5%
Fuel Farm	3,033	2,125	908	42.7%
Aircraft Remain Overnight Fees	564	287	277	96.5%
Cargo Bldg & Ramp Use Fees	1,737	1,875	(138)	-7.4%
Extraordinary Service Charges	46	69	(23)	-33.3%
Passenger Boarding Bridges	1,791	1,614	177	11.0%
Tenant Telephone Fees	43	43	-	0.0%
Terminal Rents	167,719	81,843	85,876	104.9%
General Aviation Hangars	928	882	46	5.2%
FBO Hangars / Fuel Oil Royalty	649	615	34	5.5%
Flight Kitchens	2,750	2,440	310	12.7%
Other Buildings & Office Space	6,553	6,286	267	4.2%
Food Service & Vending	15,237	14,421	816	5.7%
News / Gift Shops	9,497	8,721	776	8.9%
Car Rental	34,759	33,133	1,626	4.9%
Leased Site Areas	5,606	5,078	528	10.4%
Auto Parking / Ground Transportation	68,776	64,320	4,456	6.9%
Advertising	749	429	320	74.6%
State Aviation Fuel Tax	3,045	2,318	727	31.4%
Military	120	139	(19)	-13.7%
Glycol Recycling Sales	359	433	(74)	-17.1%
Auxiliary Airport Fuel Sales	2,330	2,166	164	7.6%
Other	5,622	2,704	2,918	107.9%
Less: Airline Revenue Sharing	(17,668)	(11,989)	(5,679)	47.4%
Operating Revenues	386,889	272,399	114,490	42.0%
Expenses				
Salaries & Wages	45,485	40,897	4,588	11.2%
Employee Benefits	15,370	14,573	797	5.5%
Maintenance Supplies	7,508	8,733	(1,225)	-14.0%
Automotive Supplies	3,267	3,862	(595)	-15.4%
Other Supplies	4,826	2,247	2,579	114.8%
Insurance Premiums	3,447	3,087	360	11.7%
Janitorial Service	17,147	14,964	2,183	14.6%
Maintenance Contracts	6,380	5,955	425	7.1%
Other Contractual Services	15,623	13,796	1,827	13.2%
Professional & Tech Services	8,257	13,812	(5,555)	-40.2%
Utilities	6,852	7,208	(356)	-4.9%
Administrative Service Fees	6,599	5,004	1,595	31.9%
Aircraft Rescue Fire Fighting	6,210	5,916	294	5.0%
Police Services	12,051	9,728	2,323	23.9%
Other Expenses	6,440	2,372	4,068	171.5%
Contingency Reserve	281	8	273	3412.5%
Operating Expenses Before Capitalized Salaries	165,743	152,162	13,581	8.9%
Capitalized Salaries	647	451	196	43.5%
Total Operating Expenses	165,096	151,711	13,385	8.8%
Operating Income	\$ 221,793	\$ 120,688	\$ 101,105	83.8%

SALT LAKE CITY DEPARTMENT OF AIRPORTS**(An Enterprise Fund of Salt Lake City Corporation)****Statements of Net Position (Unaudited)****(Amounts in Thousands)**

<i>As of May 31,</i>	2025	2024
ASSETS		
Current Assets		
Cash and cash equivalents	\$ 121,348	\$ 294,777
Restricted cash and cash equivalents	421,848	413,278
Restricted investments	69,482	75,298
Airline and rental fees receivable	53,524	37,108
Loans receivable	4,292	5,559
Leases receivable	36,818	44,744
Other assets	9,252	3,715
Total current assets	716,564	874,479
Noncurrent Assets		
Restricted cash and cash equivalents	82,861	47,696
Restricted investments	166,465	113,960
Loans receivable	30,431	12,132
Leases receivable	126,444	159,564
Other assets	249	249
Total noncurrent assets and investments	406,450	333,601
Capital assets		
Land	113,441	113,216
Building and improvements	4,221,328	3,695,939
Equipment	443,794	361,688
Leased Asset	504	504
Subscription Asset	3,807	3,697
Construction in progress	1,282,231	1,437,039
Total capital assets - at cost	6,065,105	5,612,083
Less accumulated depreciation	1,427,599	1,246,211
Net capital assets	4,637,506	4,365,872
Total noncurrent assets	5,043,956	4,699,473
Total Assets	5,760,520	5,573,952
Deferred Outflows of Resources	10,272	7,926
Total Assets and Deferred Outflows of Resources	\$ 5,770,792	\$ 5,581,878

SALT LAKE CITY DEPARTMENT OF AIRPORTS**(An Enterprise Fund of Salt Lake City Corporation)****Statements of Net Position (Unaudited)****(Amounts in Thousands)**

As of May 31,	2025	2024
LIABILITIES		
Current Liabilities		
Accounts payable	\$ 37,891	\$ 56,985
Accrued compensation	1,184	1,304
Interest payable	67,968	68,490
Other accrued liabilities	13,759	23,712
Current bonds payable	53,670	25,065
Subscription Liability	172	544
Line of credit	200,000	-
Total current liabilities	374,644	176,100
Noncurrent Liabilities		
Revenue bonds payable	3,638,949	3,712,104
Noncurrent compensation liability	4,710	5,079
Net pension liability	5,599	4,248
Other accrued liabilities	30,334	36,435
Subscription Liability	780	908
Total noncurrent liabilities	3,680,372	3,758,774
Total Liabilities	4,055,016	3,934,874
Deferred Inflows of Resources		
Deferred inflows - revenue collected in advance	19,005	9,226
Deferred inflows - leases	163,261	204,253
Deferred inflows - pension	76	106
Total Deferred Inflows of Resources	182,342	213,585
NET POSITION		
Net investment in capital assets	1,146,521	1,081,480
Restricted for		
Capital projects	108,900	68,165
Debt service	192,603	136,984
Unrestricted	85,410	146,790
Net Position	1,533,434	1,433,419
Total Liabilities, Deferred Inflows of Resources, and Net Position	\$ 5,770,792	\$ 5,581,878

SALT LAKE CITY DEPARTMENT OF AIRPORTS**(An Enterprise Fund of Salt Lake City Corporation)****Statements of Revenues, Expenses, and Changes in Fund Net Position (Unaudited)****(Amounts in Thousands)**

<i>for the eleven month period ended May,</i>	2025	2024
Operating Revenues		
Airline revenue	\$ 281,156	\$ 156,950
Terminal concessions	28,206	26,302
Landside concessions	113,853	106,134
Lease revenue	11,582	10,732
General aviation	1,710	4,003
State aviation tax	3,061	2,627
Other revenue	7,914	6,006
Operating revenues	447,482	312,754
Less airline revenue sharing	(19,304)	(13,078)
Total operating revenues	428,178	299,676
Operating Expenses		
Salaries and benefits	66,812	60,756
Materials and supplies	17,012	16,218
Maintenance contracts	26,101	24,824
Charges and services	28,128	31,078
Utilities	7,650	7,879
Inter-governmental	27,128	22,657
Other expenses	10,560	5,628
Total operating expenses before depreciation	183,391	169,040
Operating Income Before Depreciation	244,787	130,636
Depreciation Expense	176,310	152,683
Operating Income (Loss)	68,477	(22,047)
Non-Operating Revenues (Expenses)		
Passenger facility charges	47,954	47,331
Customer facility charges	15,270	15,269
Interest income	36,494	45,736
Interest expense	(143,270)	(139,441)
Bond issuance costs	(230)	(2,327)
Other revenue (expenses), net	18	409
Net non-operating loss	(43,764)	(33,023)
Capital Contributions		
Contributions and grants	32,912	75,244
Total capital contributions	32,912	75,244
Net Position		
Increase in net position	57,625	20,174
Net Position, beginning of period	1,475,809	1,413,245
Net Position, end of period	\$ 1,533,434	\$ 1,433,419

SALT LAKE CITY DEPARTMENT OF AIRPORTS

(An Enterprise Fund of Salt Lake City Corporation)

Operating Revenues and Expenditures to Budget (Unaudited)

(Amounts in Thousands)

	Jul 2024 - May 2025 ACTUALS	Jul 2024 - May 2025 BUDGET	SURPLUS/ DEFICIT	PERCENT CHANGE
Revenues				
Landing Fees	\$ 80,009	\$ 83,057	\$ (3,048)	-3.7%
Fuel Farm	3,336	3,338	(2)	-0.1%
Aircraft Remain Overnight Fees	610	798	(188)	-23.6%
Cargo Bldg & Ramp Use Fees	1,907	1,935	(28)	-1.4%
Extraordinary Service Charges	50	77	(27)	-35.1%
Passenger Boarding Bridges	1,999	1,972	27	1.4%
Tenant Telephone Fees	48	52	(4)	-7.7%
Terminal Rents	187,073	179,503	7,570	4.2%
General Aviation Hangars	1,012	1,007	5	0.5%
FBO Hangars / Fuel Oil Royalty	698	716	(18)	-2.5%
Flight Kitchens	3,022	2,873	149	5.2%
Other Buildings & Office Space	7,122	7,888	(766)	-9.7%
Food Service & Vending	16,857	16,904	(47)	-0.3%
News / Gift Shops	10,539	11,234	(695)	-6.2%
Car Rental	37,981	36,445	1,536	4.2%
Leased Site Areas	6,193	5,654	539	9.5%
Auto Parking / Ground Transportation	75,872	71,369	4,503	6.3%
Advertising	810	540	270	50.0%
State Aviation Fuel Tax	3,061	2,670	391	14.6%
Military	120	144	(24)	-16.7%
Glycol Recycling Sales	401	459	(58)	-12.6%
Auxiliary Airport Fuel Sales	2,543	2,191	352	16.1%
Other	6,219	1,327	4,892	368.7%
Less: Airline Revenue Sharing	(19,304)	(18,506)	(798)	4.3%
Total Operating Revenues	428,178	413,647	14,531	3.5%
Expenses				
Salaries & Wages	50,662	48,869	(1,793)	-3.7%
Employee Benefits	16,905	21,524	4,619	21.5%
Maintenance Supplies	8,329	13,390	5,061	37.8%
Automotive Supplies	3,582	5,437	1,855	34.1%
Other Supplies	5,100	4,915	(185)	-3.8%
Insurance Premiums	3,447	3,892	445	11.4%
Janitorial Service	18,975	21,525	2,550	11.8%
Maintenance Contracts	7,125	8,680	1,555	17.9%
Other Contractual Services	17,963	22,438	4,475	19.9%
Professional & Tech Services	10,165	13,729	3,564	26.0%
Utilities	7,650	6,969	(681)	-9.8%
Administrative Service Fees	7,041	6,891	(150)	-2.2%
Aircraft Rescue Fire Fighting	6,831	6,831	-	0.0%
Police Services	13,256	13,256	-	0.0%
Other Expenses	6,833	2,991	(3,842)	-128.5%
Contingency Reserve	281	1,000	719	71.9%
Operating Expenses Before Capitalized Salaries	184,145	202,337	18,192	9.0%
Capitalized Salaries	754	754	-	0.0%
Total Operating Expenses	183,391	201,583	18,192	9.0%
Operating Income	\$ 244,787	\$ 212,064	\$ 32,723	15.4%

SALT LAKE CITY DEPARTMENT OF AIRPORTS

(An Enterprise Fund of Salt Lake City Corporation)

Operating Revenues and Expenditures to Prior Year (Unaudited)

(Amounts in Thousands)

	Jul 2024 - May 2025	Jul 2023 - May 2024	DOLLAR CHANGE	PERCENT CHANGE
Revenues				
Landing Fees	\$ 80,009	\$ 57,821	\$ 22,188	38.4%
Fuel Farm	3,336	2,428	908	37.4%
Aircraft Remain Overnight Fees	610	311	299	96.1%
Cargo Bldg & Ramp Use Fees	1,907	2,038	(131)	-6.4%
Extraordinary Service Charges	50	69	(19)	-27.5%
Passenger Boarding Bridges	1,999	1,779	220	12.4%
Tenant Telephone Fees	48	48	-	0.0%
Terminal Rents	187,073	90,483	96,590	106.7%
General Aviation Hangars	1,012	940	72	7.7%
FBO Hangars / Fuel Oil Royalty	698	669	29	4.3%
Flight Kitchens	3,022	2,688	334	12.4%
Other Buildings & Office Space	7,122	6,923	199	2.9%
Food Service & Vending	16,857	16,094	763	4.7%
News / Gift Shops	10,539	9,638	901	9.3%
Car Rental	37,981	35,975	2,006	5.6%
Leased Site Areas	6,193	5,569	624	11.2%
Auto Parking / Ground Transportation	75,872	70,159	5,713	8.1%
Advertising	810	571	239	41.9%
State Aviation Fuel Tax	3,061	2,627	434	16.5%
Military	120	157	(37)	-23.6%
Glycol Recycling Sales	401	465	(64)	-13.8%
Auxiliary Airport Fuel Sales	2,543	2,451	92	3.8%
Other	6,219	2,851	3,368	118.1%
Less: Airline Revenue Sharing	(19,304)	(13,078)	(6,226)	47.6%
Operating Revenues	428,178	299,676	128,502	42.9%
Expenses				
Salaries & Wages	50,662	45,253	5,409	12.0%
Employee Benefits	16,905	16,011	894	5.6%
Maintenance Supplies	8,329	9,556	(1,227)	-12.8%
Automotive Supplies	3,582	4,252	(670)	-15.8%
Other Supplies	5,100	2,410	2,690	111.6%
Insurance Premiums	3,447	3,087	360	11.7%
Janitorial Service	18,975	18,309	666	3.6%
Maintenance Contracts	7,125	6,515	610	9.4%
Other Contractual Services	17,963	15,142	2,821	18.6%
Professional & Tech Services	10,165	15,935	(5,770)	-36.2%
Utilities	7,650	7,879	(229)	-2.9%
Administrative Service Fees	7,041	5,448	1,593	29.2%
Aircraft Rescue Fire Fighting	6,831	6,508	323	5.0%
Police Services	13,256	10,701	2,555	23.9%
Other Expenses	6,833	2,532	4,301	169.9%
Contingency Reserve	281	8	273	3412.5%
Operating Expenses Before Capitalized Salaries	184,145	169,546	14,599	8.6%
Capitalized Salaries	754	506	248	49.0%
Total Operating Expenses	183,391	169,040	14,351	8.5%
Operating Income	\$ 244,787	\$ 130,636	\$ 114,151	87.4%

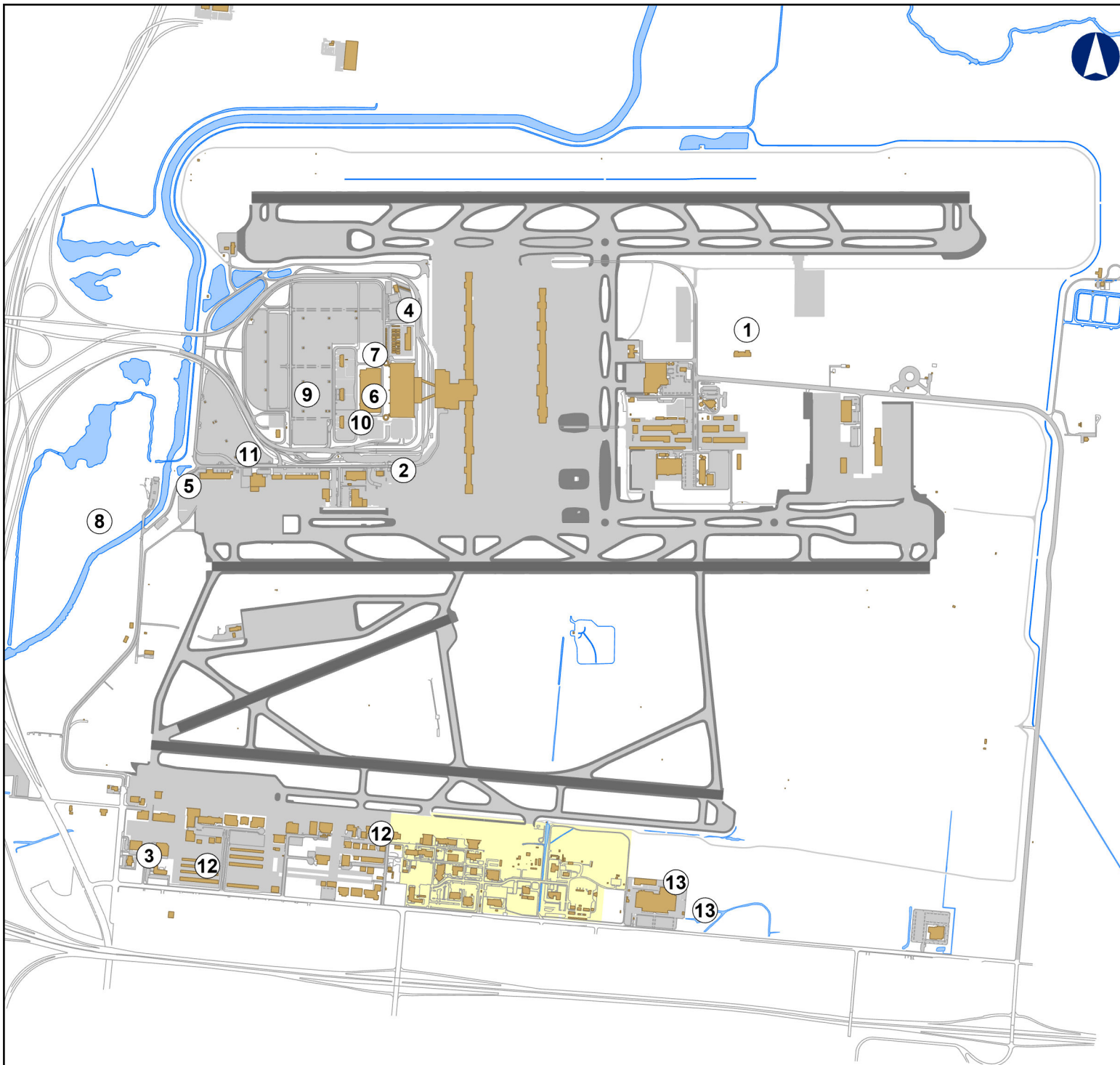
CONSTRUCTION REPORT

TABLE OF CONTENTS

- I. Area Map of Project Locations
- II. Project Schedule
- III. Construction Analysis
- IV. Construction Report

SALT LAKE CITY DEPARTMENT OF AIRPORTS

July 30, 2025



2025 - 2026 Project Legend

Airfield

1. Taxiways U & V

Landside

2. Ground Transportation Restroom + Charging Stations
3. National Weather Service Replacement Controls
4. Bus Plaza EV Stations
5. AOC Backup Generator
6. QTA Elevator Upgrades
7. CUP Crossover Piping
8. South Employee Parking Lot
9. Economy Parking Lot and Bus Lane Reconstruction
10. QTA Equipment Replacement
11. Electrical Vehicle Charging Stations Ph. IV
12. GA Hangar Demo-Hughes ,Upper Limit Rows 6,7,10 & 11
13. Sky Harbour Roadway + Site Improvements

SALT LAKE CITY INTERNATIONAL AIRPORT
CONSTRUCTION PROGRAM
2025/2026 Construction Schedule

ID	Task Name	Start	Finish	Mar '25	Apr '25	May '25	Jun '25	Jul '25	Aug '25	Sep '25	Oct '25	Nov '25
1	Project Title	Mon 5/13/24	Fri 9/29/28									
2	(1) Taxiways U & V	Fri 8/1/25	Fri 9/29/28									
3	(2) Ground Trans. Restrooms & Charging Stations Infrastructure	Mon 5/13/24	Mon 9/15/25									
4	(3) National Weather Service Replacement Controls	Mon 3/3/25	Mon 9/29/25									
5	(4) Bus Plaza EV Stations	Wed 9/25/24	Mon 11/30/26									
6	(5) AOC Back-up Generator	Thu 8/29/24	Thu 9/4/25									
7	(6) QTA Elevator Upgrades	Thu 10/3/24	Fri 8/29/25									
8	(7) CUP Crossover Piping	Fri 10/18/24	Fri 8/1/25									
9	(8) South Employee Parking Lot - Phase 1	Mon 4/14/25	Wed 7/8/26									
10	(9) Economy Pakring Lot & Bus Lane Reconstruction	Mon 5/12/25	Sun 10/19/25									
11	(10) QTA Equipment Replacement	Mon 4/21/25	Sat 8/23/25									
12	(11) Electrical Vehicle Charging Stations Ph. IV	Thu 5/15/25	Fri 7/3/26									
13	(12) GA Hangar Demo - Hughes, Upper Limit, Rows 6,7,10 & 11	Mon 7/14/25	Fri 9/5/25									
14	(13) State of Utah - Sky Harbour Roadway and Site Improvements	Mon 7/28/25	Fri 5/29/26									
15	(14) SVRA Pavement Preservation & Tie Down Reconfiguration	Thu 5/15/25	Sat 9/6/25									

Project: Microsoft Project (latest)
Date: Wed 7/30/25

CONSTRUCTION 

**SALT LAKE CITY DEPARTMENT OF AIRPORTS
CONSTRUCTION PROJECT STATUS 2025 - 2026**

				APPROVED			
				CHANGE	% OF COST		
#	PROJECT NAME	ENGINEER'S	BID	ORDERS TO	INCREASE TO		
		ESTIMATE	AMOUNT	DATE	DATE	STATUS	CONTRACTOR
	CONSTRUCTION						
1	Taxiways U & V	\$ 179,781,054	\$ 154,284,395			on schedule	Ames Construction
2	Ground Transportation Restroom & Charging Stations	\$ 695,364	\$ 628,223	\$ 43,080	6.86%	on schedule	Paulsen Construction
3	National Weather Service Replacement Controls	\$ 630,710	\$ 617,686	\$ 1,790	0.29%	on schedule	Crescent Construction
4	Bus Plaza EV Stations	\$ 561,550	\$ 558,720	\$ 2,220	0.40%	on schedule	Cache Valley Electric
5	AOC Back-up Generator	\$ 527,783	\$ 542,995	\$ 10,851	2.00%	on schedule	All-Tech Electric
6	QTA Elevator Upgrades	\$ 655,269	\$ 716,773	\$ 148,583	20.73%	on schedule	Crescent Construction
7	CUP Crossover Piping	\$ 1,682,366	\$ 1,300,400	\$ 126,153	9.70%	on schedule	Industrial Piping & Welding, LLC
8	South Employee Parking Lot - Phase 1	\$ 21,072,002	\$ 16,486,074			on schedule	Sunroc
9	Economy Parking Lot & Bus Lane Reconstruction	\$ 3,333,220	\$ 2,830,681	\$ 44,247	1.56%	on schedule	ACME
10	QTA Equipment Replacement	\$ 623,039	\$ 255,031			on schedule	Slider Construction
11	Electrical Vehicle Charging Stations Ph. IV	\$ 711,038	\$ 410,998			on schedule	Double D Electrical
12	GA Hangar Demo - Hughes, Upper Limit, Rows 6, 7, 10 & 11	\$ 2,145,362	\$ 997,200			on schedule	Forge Construction
13	State of Utah - Sky Harbour Roadway & Site Improvements	\$ 5,805,628	\$ 5,178,415			on schedule	Stacy Witbeck Construction
14	SVRA Pavement Preservation & Tie Down Reconfiguration	\$ 768,869	\$ 950,564	\$ 20,391	2.15%	on schedule	Sunset Mountain Machinery
	Total	\$ 218,993,253	\$ 185,758,154	\$ 332,677	0.18%		
	Engineer's estimate and Bid amount is based on construction cost only.						

CONSTRUCTION REPORT

CONSTRUCTION

- (1) **Taxiways U & V** - Contract documents have been executed, and the Notice to Proceed was issued on August 1. The construction start date has been delayed as potential schedule risks related to supply chain availability have been identified and are currently being evaluated through early coordination with the Contractor. Substantial completion remains targeted for September 29, 2028.
- (2) **Ground Transportation Restrooms & Charging Stations Infrastructure** - Long lead electrical cabinet equipment is scheduled for delivery by August 20, with approximately eight days required for installation. A punch walk will follow, with project completion anticipated by September 15, 2025.
- (3) **National Weather Service Replacement Controls and Service Remodel** - Completion of Siemens' scope is pending updates to system graphics. A Proposed Change Order to replace fixed office thermostats with adjustable models is currently under review. Anticipating long lead times for the added metal shade structure and bike rack. The overall project completion date is expected to be extended to September 2025.
- (4) **Bus Plaza EVC Stations** - SLCDCA is awaiting delivery of the charging stations, switchgear, and the RMP transformer. The estimated delivery and installation date is anticipated for late September. The project completion date is set for November 2026; however, completion is currently tracking well ahead of schedule.
- (5) **AOC Backup Generator** - The generator has been set, and electrical gear is currently being tied into the building. Utility shutdowns at the AOC, scheduled for August 6 and 13, will complete the tie-in. Project completion is targeted for September 4, 2025, four months ahead of the originally scheduled January 2026 date.
- (6) **QTA Elevator Upgrades** - The Contractor was required to submit fire alarm and smoke detector shop drawings for review by the City and Fire Marshal; these have been approved, allowing work to proceed. Once this work is complete, the elevator Contractor will install the controls and prepare the elevators for State Inspection. Substantial Completion is scheduled for August 29, 2025.
- (7) **CUP Crossover Piping** - The Contractor has completed the Phase 2 scope, which included the tie-in of the hot water loop. Insulation work is underway, with inspections to follow upon completion. Substantial Completion is anticipated by August 1, 2025.
- (8) **South Employee Parking Lot - Phase 1** - The Contractor has completed the bulk of the earthwork operations and is beginning utility installation. The submittal process is on-going. Substantial Completion is anticipated for July 8, 2026.
- (9) **Economy Parking Lot & Bus Lane Reconstruction** - The Park and Wait Lot is complete and open. The final section of the Economy Lot, Exit Plaza, Bus Parking Lot, and new concrete bus lane at the east flyover bridge are scheduled for completion and opening this week. Work on the Jockey Road will continue in multiple phases over the coming weeks. Clearing for the final section of the new bus lane south of the Exit Plaza will begin August 1, with construction starting August 15. Substantial Completion is anticipated by October 19, 2025.

- (10) **QTA Equipment Replacement** - The Contractor has completed the light fixture installation. The deck coating scope is progressing well. Substantial completion is anticipated for August 23, 2025.
- (11) **Electrical Vehicle Charging Stations Ph. IV** - The Contractor has completed trenching, and underground conduit installation is currently underway. The next phase includes boring under Terminal Drive to connect to the existing Rocky Mountain Power sectionalizer. Substantial Completion is anticipated by July 3, 2026.
- (12) **GA Hangar Demo - Hughes, Upper Limit, Rows 6,7, 10 & 11** - A Construction Notice to Proceed was issued on July 14. The Contractor is currently preparing submittals for review and approval by SLCDA. Jersey barriers have been delivered to the site in preparation for the temporary SIDA fence. Substantial completion is anticipated by September 5, 2025.
- (13) **State of Utah - Sky Harbour Roadway and Site Improvements** - A Construction Notice to Proceed was issued to the Contractor on July 28. The Contractor is currently preparing submittals for review and approval by SLCDA. Equipment mobilization is underway, and construction entrance work has commenced. Substantial Completion is anticipated by May 29, 2026.
- (14) **SVRA Pavement Preservation & Tie Down Reconfiguration** - The southern half of the apron is complete and operational. Work on the northern half is progressing, including tie-down removal and installation. Substantial Completion is anticipated by September 6, 2025.

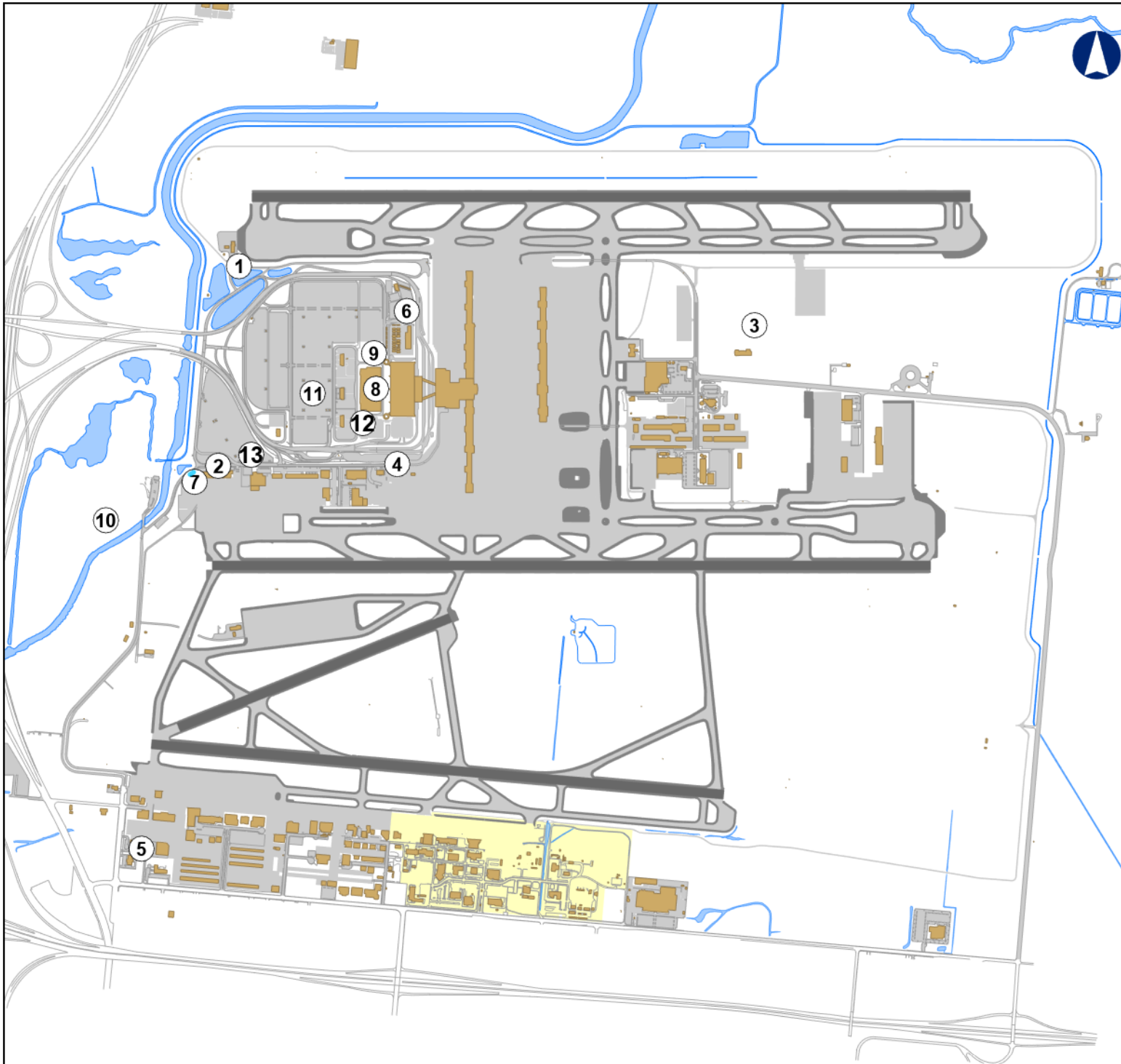
CONSTRUCTION REPORT

TABLE OF CONTENTS

- I. Area Map of Project Locations
- II. Project Schedule
- III. Construction Analysis
- IV. Construction Report

SALT LAKE CITY DEPARTMENT OF AIRPORTS

June 10, 2025



2024 - 2025 Project Legend

Airfield

1. Pumpstation #9 Renovations
2. Electrical Vehicle Charging Stations (AOC) (FY23)
3. Taxiways U & V

Landside

4. Ground Transportation Restroom + Charging Stations
5. National Weather Service Replacement Controls
6. Bus Plaza EV Stations
7. AOC Backup Generator
8. QTA Elevator Upgrades
9. CUP Crossover Piping
10. South Employee Parking Lot
11. Economy Parking Lot and Bus Lane Reconstruction
12. QTA Equipment Replacement
13. Electrical Vehicle Charging Stations Ph. IV

SALT LAKE CITY INTERNATIONAL AIRPORT
CONSTRUCTION PROGRAM
2024/2025 Construction Schedule

ID	Task Name	Start	Finish	Mar '25	Apr '25	May '25	Jun '25	Jul '25	Aug '25	Sep '25	Oct '25	Nov '25
1	Project Title	Tue 8/8/23	Tue 6/6/28									
2	(1) Pump Station #9 Renovations	Tue 8/8/23	Wed 5/28/25									
3	(2) Electrical Vehicle Charging Stations (FY23)	Thu 9/28/23	Fri 5/30/25									
4	(3) Taxiways U & V	Fri 8/1/25	Tue 6/6/28									
5	(4) Ground Trans. Restrooms & Charging Stations Infrastructure	Mon 5/13/24	Tue 6/10/25									
6	(5) National Weather Service Replacement Controls	Mon 3/3/25	Mon 6/30/25									
7	(6) Bus Plaza EV Stations	Wed 9/25/24	Mon 11/30/26									
8	(7) AOC Back-up Generator	Thu 8/29/24	Wed 10/9/24									
9	(8) QTA Elevator Upgrades	Thu 10/3/24	Thu 7/10/25									
10	(9) CUP Crossover Piping	Fri 10/18/24	Fri 8/1/25									
11	(10) South Employee Parking Lot - Phase 1	Mon 4/14/25	Sun 4/20/25									
12	(11) Economy Pakring Lot & Bus Lane Reconstruction	Mon 5/12/25	Sun 10/19/25									
13	(12) QTA Equipment Replacement	Mon 4/21/25	Sat 8/23/25									
14	(13) Electrical Vehicle Charging Stations Ph. IV	Thu 5/15/25	Fri 7/3/26									
15	(14) SVRA Pavement Preservation & Tie Down Reconfiguration	Thu 5/15/25	Fri 9/12/25									

**SALT LAKE CITY DEPARTMENT OF AIRPORTS
CONSTRUCTION PROJECT STATUS 2024 - 2025**

				APPROVED			
				CHANGE	% OF COST		
#	PROJECT NAME	ENGINEER'S	BID	ORDERS TO	INCREASE TO		
		ESTIMATE	AMOUNT	DATE	DATE	STATUS	CONTRACTOR
	CONSTRUCTION						
1	Pump Station #9 Renovations	\$ 956,629	\$ 2,255,819	\$ 8,884	0.39%	complete	Crescent Construction
2	Electrical Vehicle Charging Stations (FY23)	\$ 570,367	\$ 620,745	\$ 5,000	0.81%	complete	Apex Electric LLC
3	Taxiways U & V	\$ 179,781,054	\$ 154,284,395			on schedule	Ames Construction
4	Ground Transportation Restroom & Charging Stations	\$ 695,364	\$ 628,223	\$ 43,080	6.86%	on schedule	Paulsen Construction
5	National Weather Service Replacement Controls	\$ 630,710	\$ 617,686	\$ 1,790	0.29%	on schedule	Crescent Construction
6	Bus Plaza EV Stations	\$ 561,550	\$ 558,720	\$ 2,220	0.40%	on schedule	Cache Valley Electric
7	AOC Back-up Generator	\$ 527,783	\$ 542,995	\$ 10,851	2.00%	on schedule	All-Tech Electric
8	QTA Elevator Upgrades	\$ 655,269	\$ 716,773	\$ 148,583	20.73%	on schedule	Crescent Construction
9	CUP Crossover Piping	\$ 1,682,366	\$ 1,300,400	\$ 126,153	9.70%	on schedule	Industrial Piping & Welding, LLC
10	South Employee Parking Lot - Phase 1	\$ 21,072,002	\$ 16,486,074			on schedule	Sunroc
11	Economy Parking Lot & Bus Lane Reconstruction	\$ 3,333,220	\$ 2,830,681	\$ 33,238	1.17%	on schedule	ACME
12	QTA Equipment Replacement	\$ 623,039	\$ 255,031			on schedule	Slider Construction
13	Electrical Vehicle Charging Stations Ph. IV	\$ 711,038	\$ 410,998			on schedule	Double D Electrical
14	SVRA Pavement Preservation & Tie Down Reconfiguration	\$ 768,869	\$ 950,564			on schedule	Sunset Mountain Machinery
	Total	\$ 212,569,259	\$ 182,459,103	\$ 346,561	0.19%		
	Engineer's estimate and Bid amount is based on construction cost only.						

CONSTRUCTION REPORT

CONSTRUCTION

- (1) **Pump Station #9 Renovations** - Substantial completion for this project was issued on May 19, 2025. The Contractor is working on a few punch list items. Project close-out will follow.
- (2) **Electrical Vehicle Charging Stations (AOC) (FY23)** - Substantial Completion for this project was issued on May 30, 2025. The Contractor has completed all punch list items. Project close-out is currently underway.
- (3) **Taxiways U & V** - The bid opening for this project was held on March 27, 2025. The successful low bidder is Ames Construction. Contract documents are currently being executed. A construction notice to proceed is anticipated for August 1st with a substantial completion date of August 3, 2028.
- (4) **Ground Transportation Restrooms & Charging Stations Infrastructure** - RMP has installed the transformer and electrical gear, with the power tie-in pending installation of the building's electrical cabinets. Procurement of these cabinets has been delayed due to late submittals, with delivery currently anticipated in 10-12 weeks. The Contractor is exploring options to expedite procurement, and the updated Substantial Completion date is currently TBD.
- (5) **National Weather Service Replacement Controls** - The Contractor needs to schedule a test and balance before Siemens can continue their work to complete the Building Automation System (BAS) work. Substantial Completion for this project has been delayed until July 15, 2025, for this additional work to be done.
- (6) **Bus Plaza EVC Stations** - SLCDCA is awaiting delivery of the charging stations, switchgear, and the RMP transformer. The estimated delivery date and installation date is anticipated for September. Substantial Completion is scheduled for November 2026 but is anticipated to be completed ahead of schedule.
- (7) **AOC Backup Generator** - The exterior equipment was set on May 28th. The generator has been delivered and is in place. Substantial completion remains scheduled for August 5, 2025, but is currently tracking approximately four months ahead of schedule.
- (8) **QTA Elevator Upgrades** - The Contractor is relocating the conduit for the electrical equipment and fire alarm ahead of the elevator installation. Substantial completion is scheduled for July 10, 2025.
- (9) **CUP Crossover Piping** - The Contractor has completed the Phase 1 chilled water loop scope. The Phase 2 scope will resume in June with the tie-in of the hot water loop. Substantial completion is anticipated for August 1, 2025.
- (10) **South Employee Parking Lot - Phase 1** - The Contractor has started with the cut and fill portion of the work. Submittals are being reviewed and approved by SLCDCA. Substantial completion is anticipated for July 8, 2026.

- (11) **Economy Parking Lot & Bus Lane Reconstruction** - Construction has been completed in the southwest corner of the parking lot, consisting of crack seal, seal coat, and painting – this area has been opened to parking. The next one-third section of the lot is in the process of being cleared of vehicles for construction work to commence. The first of 3 phases of concrete roadway placement is underway. Substantial completion is anticipated for October 19, 2025.
- (12) **QTA Equipment Replacement** - The Contractor has begun with the light fixture installation. The deck coating work will begin the week of June 16th. Substantial completion is anticipated for August 23, 2025.
- (13) **Electrical Vehicle Charging Stations Ph. IV** - A pre-construction meeting was held on May 15, 2025. The Contractor is currently preparing submittals for review and approval by SLCDA. Substantial completion is anticipated for July 3, 2026. non-load bearing so full removal is required; Contractor preparing cost proposal
- (14) **SVRA Pavement Preservation & Tie Down Reconfiguration** - Crack seal, seal coat, and painting has been completed in the first half of the project. Contractor is currently installing tie-downs. Substantial completion is anticipated for September 12, 2025.