

Salt Lake City International Airport – September 23, 2024

Weekly Flight Schedule Update



Note: This report is provided courtesy of Salt Lake City International Airport and is for internal use only. For questions, please contact Nate Lavin, Air Service Development Manager, at nate.lavin@slcgov.com

WEEKLY CHANGES SUMMARY

- Delta (DL) is adding capacity to Philadelphia (PHL) in February, from 11x weekly to 14x weekly, a 28% increase in departures year over year.
- Delta (DL) will suspend Casper (CPR) starting in December, with no return set in current selling schedule.
- Frontier (F9) will suspend Ontario (ONT) for the month of November.

NOTABLE UPCOMING CHANGES

- Frontier's (F9) three times weekly service to Seattle (SEA) begins October 11
- Avelo's (XP) twice-weekly service to Santa Rosa (STS) begins October 24
- Delta's (DL) daily service to Cleveland (CLE) and Pittsburgh (PIT) resume November 23
- Aeromexico's winter seasonal service to Mexico City (MEX) resumes December 19
- Delta's (DL) daily service to Northwest Arkansas/Fayetteville (XNA), begins February 23, 2025

SLC AND U.S. MONTHLY COMPARISONS

November 2024 (Compared to 2023)			
	Absolute Change	Percent Change	U.S. Average % Change
Monthly Departing Flights	171	2%	3%
Monthly Departing Seats	33,129	3%	2%

December 2024 (Compared to 2023)			
	Absolute Change	Percent Change	U.S. Average % Change
Monthly Departing Flights	194	2%	3%
Monthly Departing Seats	41,704	3%	2%

FLIGHT SCHEDULE COMPARISONS BY CARRIER

November 2024 (compared to 2023)		
AEROMEXICO	Absolute Change	Percent Change
Monthly Departing Flights	0	0%
Monthly Departing Seats	0	0%
December 2024 (compared to 2023)		
AEROMEXICO	Absolute Change	Percent Change
Monthly Departing Flights	14	47%
Monthly Departing Seats	4,322	146%

November 2024 (compared to 2023)		
AIR CANADA	Absolute Change	Percent Change
Monthly Departing Flights	0	0%
Monthly Departing Seats	0	0%
December 2024 (compared to 2023)		
AIR CANADA	Absolute Change	Percent Change
Monthly Departing Flights	0	0%
Monthly Departing Seats	0	0%

November 2024 (compared to 2023)		
ALASKA	Absolute Change	Percent Change
Monthly Departing Flights	44	27%
Monthly Departing Seats	2,557	12%
December 2024 (compared to 2023)		
ALASKA	Absolute Change	Percent Change
Monthly Departing Flights	29	16%
Monthly Departing Seats	53	0%

November 2024 (compared to 2023)		
AMERICAN	Absolute Change	Percent Change
Monthly Departing Flights	27	6%
Monthly Departing Seats	1,404	3%
December 2024 (compared to 2023)		
AMERICAN	Absolute Change	Percent Change
Monthly Departing Flights	43	8%
Monthly Departing Seats	3,322	5%

November 2024 (compared to 2023)		
AVELO	Absolute Change	Percent Change
Monthly Departing Flights	NEW	NEW
Monthly Departing Seats	NEW	NEW
December 2024 (compared to 2023)		
AVELO	Absolute Change	Percent Change
Monthly Departing Flights	NEW	NEW
Monthly Departing Seats	NEW	NEW

November 2024 (compared to 2023)		
DELTA	Absolute Change	Percent Change
Monthly Departing Flights	113	2%
Monthly Departing Seats	23,147	3%
December 2024 (compared to 2023)		
DELTA	Absolute Change	Percent Change
Monthly Departing Flights	221	3%
Monthly Departing Seats	46,188	5%

November 2024 (compared to 2023)		
FRONTIER	Absolute Change	Percent Change
Monthly Departing Flights	109	62%
Monthly Departing Seats	21,938	63%
December 2024 (compared to 2023)		
FRONTIER	Absolute Change	Percent Change
Monthly Departing Flights	144	92%
Monthly Departing Seats	27,800	91%

November 2024 (compared to 2023)		
HAWAIIAN	Absolute Change	Percent Change
Monthly Departing Flights	NEW	NEW
Monthly Departing Seats	NEW	NEW
December 2024 (compared to 2023)		
HAWAIIAN	Absolute Change	Percent Change
Monthly Departing Flights	NEW	NEW
Monthly Departing Seats	NEW	NEW

November 2024 (compared to 2023)		
JETBLUE	Absolute Change	Percent Change
Monthly Departing Flights	-132	-77%
Monthly Departing Seats	-21,384	-77%
December 2024 (compared to 2023)		
JETBLUE	Absolute Change	Percent Change
Monthly Departing Flights	-101	-64%
Monthly Departing Seats	-17,008	-65%

November 2024 (compared to 2023)		
KLM	Absolute Change	Percent Change
Monthly Departing Flights	0	0%
Monthly Departing Seats	0	0%
December 2024 (compared to 2023)		
KLM	Absolute Change	Percent Change
Monthly Departing Flights	0	0%
Monthly Departing Seats	0	0%

November 2024 (compared to 2023)		
SOUTHWEST	Absolute Change	Percent Change
Monthly Departing Flights	-92	-9%
Monthly Departing Seats	-15,076	-9%
December 2024 (compared to 2023)		
SOUTHWEST	Absolute Change	Percent Change
Monthly Departing Flights	-92	-9%
Monthly Departing Seats	-16,708	-10%

November 2024 (compared to 2023)		
SPIRIT	Absolute Change	Percent Change
Monthly Departing Flights	61	60%
Monthly Departing Seats	11,402	62%
December 2024 (compared to 2023)		
SPIRIT	Absolute Change	Percent Change
Monthly Departing Flights	75	68%
Monthly Departing Seats	14,131	70%

November 2024 (compared to 2023)		
SUN COUNTRY	Absolute Change	Percent Change
Monthly Departing Flights	0	0%
Monthly Departing Seats	0	0%
December 2024 (compared to 2023)		
SUN COUNTRY	Absolute Change	Percent Change
Monthly Departing Flights	0	0%
Monthly Departing Seats	0	0%

November 2024 (compared to 2023)		
UNITED	Absolute Change	Percent Change
Monthly Departing Flights	-27	-5%
Monthly Departing Seats	-2,716	-5%
December 2024 (compared to 2023)		
UNITED	Absolute Change	Percent Change
Monthly Departing Flights	7	1%
Monthly Departing Seats	1,760	3%

ROUTE MAP AND MONTHLY SUMMARY

November 2024

Average Daily Flights: 312

Average Daily Departing Seats: 43,100

Nonstop Destinations: 97



December 2024

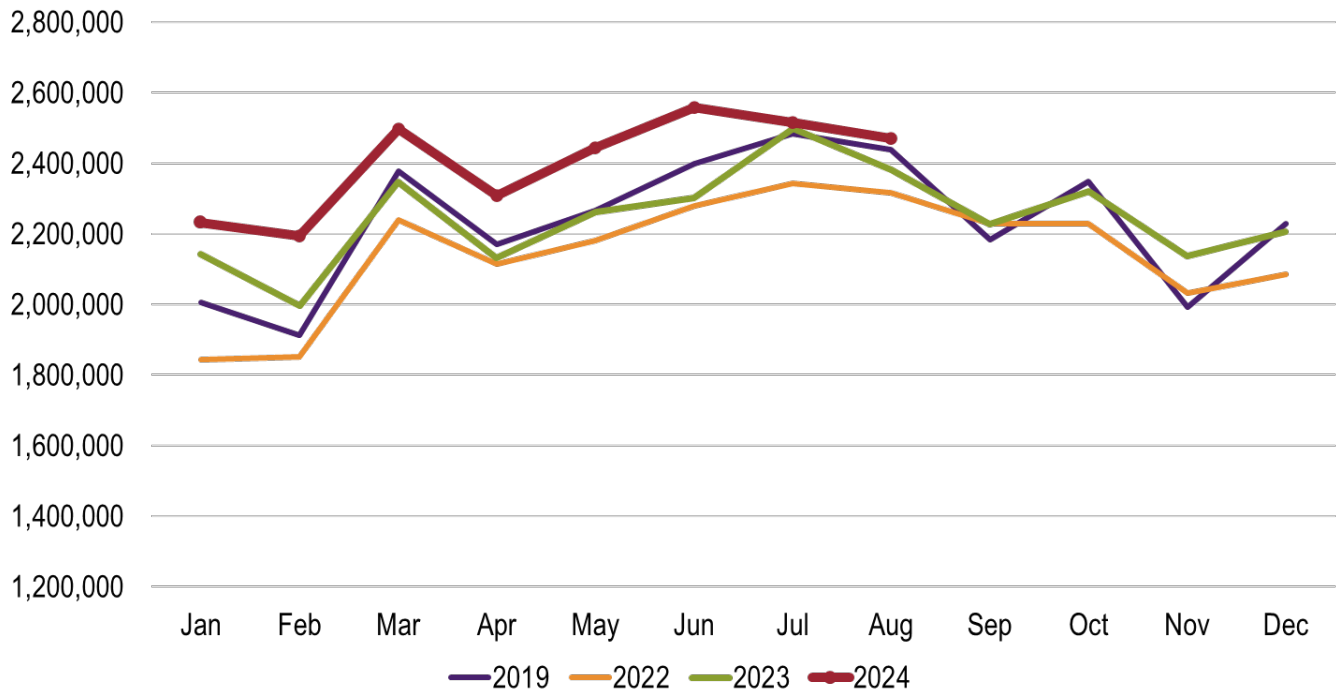
Average Daily Flights: 326

Average Daily Departing Seats: 45,200

Nonstop Destinations: 97



SLC Total Passengers by Month



U.S. Large Hub Load Factors

YE Jun. 2024

