



## Construction Goes Vertical

On May 17, The New SLC construction reached another milestone. The first steel beam was erected on the site signaling the start of construction going vertical. During this phase of construction, crews will install 21,600 tons of steel to build the parking garage, terminal and South Concourse-West. To learn more about this process, watch the video below:



Currently, about 430 construction workers are on site pouring concrete, installing utilities and building rebar cage towers. These 24-foot towers can be

seen when exiting the Airport and will be used to support the parking garage. In addition, 33-foot rebar cage columns are being erected to support the elevated roadway.

Construction updates and photos are posted at [www.slcairport.com/thenewslc/construction-updates](http://www.slcairport.com/thenewslc/construction-updates)



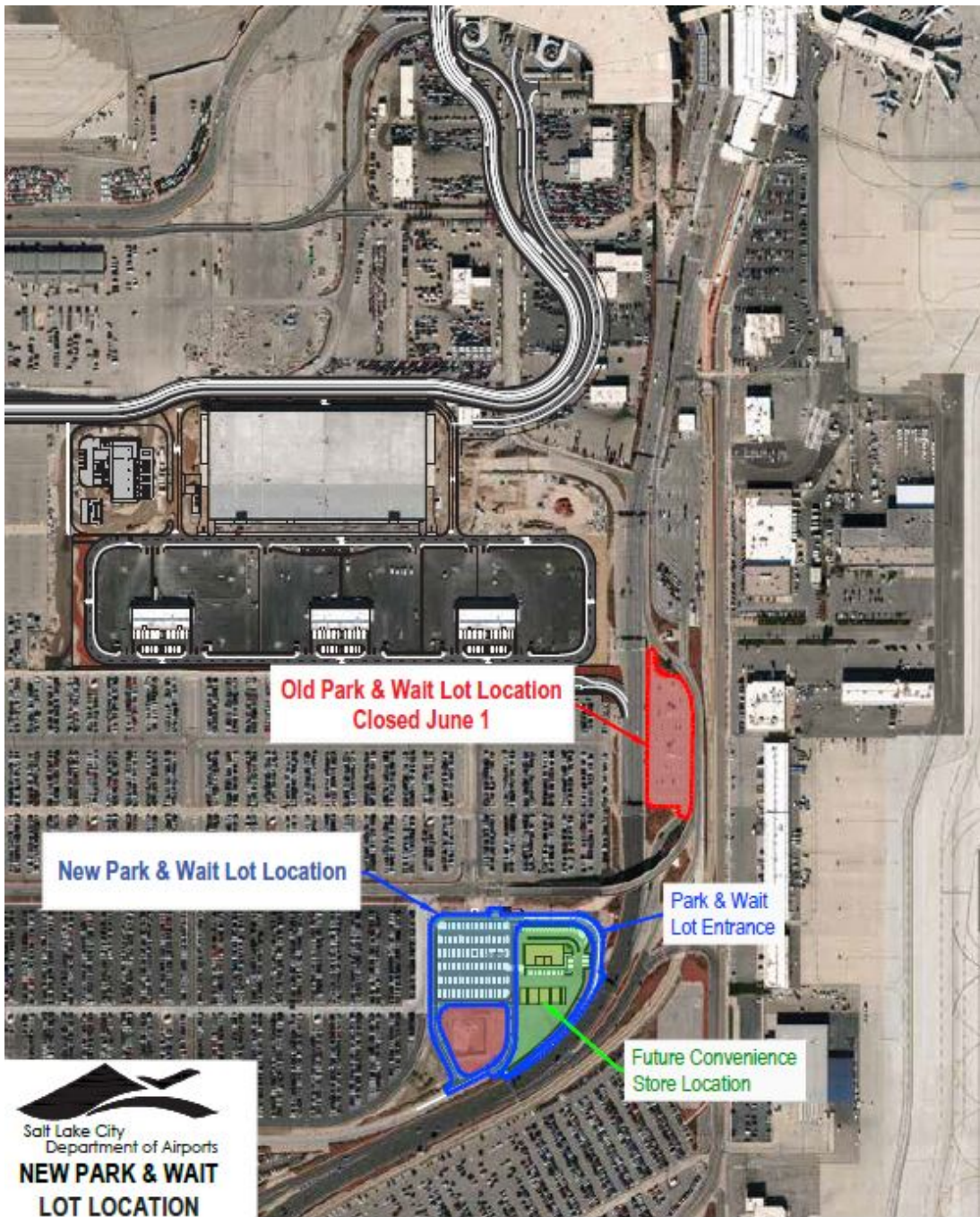
## New Park and Wait Park and Wait Lot Relocates

The SLC International Airport's Park and Wait Lot had moved to make way for construction of an elevated roadway as part of The New SLC-the airport's redevelopment program.

On June 1, the existing Park and Wait Lot closed and the new location opened south of the existing lot and west of Terminal Drive. The new lot has 120 parking spaces compared to 86 spaces in the current lot.

The existing Park and Wait Lot was vacated to make way for construction to begin on the elevated roadway that will be the entry point for The New SLC. The new roadway is designed with one level for passenger pick-up and a second level for passenger drop-off. This roadway configuration is expected to alleviate congestion on Terminal Drive.

In the fall, a convenience store will open in the new Park and Wait Lot, which will include a Chevron gas station, an electric charging station and food options, including a Beans & Brews Coffee House, Burger King and Costa Vida. The store will serve customers who walk-in or via a drive-through lane. Partners in the concessionaire are Kellerstrass Oil Company, HB Boys Management Company and Big-D Construction.



## Doing Business at The New SLC

The New SLC is still a few years away from opening its doors, but an orientation process about doing business at the new Airport is underway.

The Salt Lake City Dept. of Airports is holding orientation sessions to help businesses understand what is required to operate a concession at the Airport.

The public solicitation process for selection of concessionaires at The New SLC will begin early next year.

Operating a business at the Airport is unique in that it is a City-owned facility that is largely regulated by the federal government in a highly-secure environment. In addition, there are limited opportunities for concessionaires to enter the Airport because of limited space, low turnover and long lease terms.

The orientations are scheduled monthly. Dates, times and locations are posted at [www.slairport.com/business-services](http://www.slairport.com/business-services).

## **Austin Okland Aviation to Build North Concourse**

The Salt Lake City Dept. of Airports has awarded Austin Okland Aviation the contract to build the North Concourse construction project, which is part of The New SLC.

Austin Okland is a joint venture between Austin Commercial and Okland Construction Company. Texas-based Austin Commercial teamed-up with Salt Lake-based Okland Construction to bid on building the North Concourse and was selected after going through Salt Lake City's procurement process.

The addition of the North Concourse to The New SLC was announced in May 2016 and will initially add 30 gates in two phases. The North Concourse will replace existing gates located on Concourses B, C and D, which have significant facility deficiencies that would require costly renovations if retained. The SLCDCA received unanimous support from all airlines serving SLC to build the North Concourse.

The first phase of the North Concourse construction will begin on the west portion of the building and is scheduled to be completed in 2020, in conjunction with the opening of the new Terminal, Parking Garage and South Concourse-West. A flexible gate layout is planned to serve a mix of aircraft sizes, though the concourse will primarily be used for narrow-body and small, wide-body aircraft.

In the future, the North Concourse layout allows for an additional 15 gates to be added to the east for a total of 45 gates. A passenger tunnel will be constructed to connect the North Concourse to the South Concourse and the new terminal.



## Stay Engaged

Follow SLC on Facebook, Instagram, Twitter, and YouTube for current information about The New SLC. Share the excitement for the new terminal with #TheNewSLC or tag @slairport in travel photos.



[www.slairport.com](http://www.slairport.com)