

DEPARTMENT OF AIRPORTS
BOARD WORK SESSION

14 December 2016

AGENDA



Salt Lake City Department of Airports

SALT LAKE CITY DEPARTMENT OF AIRPORTS BOARD WORK SESSION AGENDA

14 December 2016
8:00 A.M.

DISCUSSION AGENDA

- A. Director's Report – Maureen Riley, Executive Director, SLCDA
- B. Terminal Redevelopment Program Update – Mike Williams, Terminal Redevelopment Program (TRP) Director, SLCDA
- C. Public Meetings Training - Marco Kunz, Senior City Attorney
- D. Powers and Duties of the Airport Board – Margaret Plane, City Attorney
- E. Ground Transportation Update – Nancy Volmer, Director of Public Relations, and Larry Bowers, Operations Manager, SLCDA
- F. Nominations for Board Chair and Vice-Chair

INFORMATION ITEMS

- A. Financial Report – October 2016
- B. Air Traffic Statistics – October 2016
- C. Comparison of On-Time Operations – September 2016
- D. Construction Status Report – December 2016
- E. Media Clippings – December 2016

The next meeting will be held on **Wednesday, January 18**, at 8:00 a.m. Meetings are held in the Board Room located on the third level of the short-term parking garage. People with disabilities may make requests for reasonable accommodations no later than 48 hours in advance in order to attend this Airport Board Meeting. Accommodations may include alternate formats, interpreters, and other auxiliary aids. This is an accessible facility. For questions or additional information, please contact LuJean Christensen at 801-575-2096.

DEPARTMENT OF AIRPORTS
BOARD WORK SESSION

14 December 2016

DISCUSSION ITEMS

SALT LAKE CITY AIRPORT BOARD

AGENDA: DISCUSSION ITEM (A)
DATE: 14 December 2016
TO: Airport Board
FROM: Maureen Riley, Executive Director
SUBJECT: **Executive Director's Report**

Maureen Riley will present a monthly informational report to the Board, including:

1. TRP progress
2. Ground transportation update

Other discussion items may include:

1. Concessions and rental cars
2. Airport safety and security
3. Airport facilities and operations
4. General aviation
5. Passenger and airport users
6. Environmental matters
7. Financial condition
8. Legislative issues
9. Airlines
10. Communications and marketing

SALT LAKE CITY AIRPORT BOARD

AGENDA: DISCUSSION ITEM (B)
DATE: 14 December 2016
TO: Airport Board
FROM: Maureen Riley, Executive Director
SUBJECT: **Terminal Redevelopment Program Update**

Mike Williams, Terminal Redevelopment Program (TRP) Director, will present an update on the SLC Terminal Redevelopment Program (presentation on file).

SLC Terminal Redevelopment Program



Salt Lake City International Airport

THE NEW **SLC**
Terminal Redevelopment Program

Job Progress Aerials



Terminal / Gateway Area

Job Progress Photos



Driving Steel Piles for the Terminal Tunnel Deep Foundation.



Foundation Piles are two 60' columns welded together driven to 120'



Terminal Tunnel Sequence 2 Area



West Lift Station Wet Well poured and Waterproofed.



Job Progress Aerials – CGMP-04 Enabling



Park and Wait Lot progress



Working in the Hole



The Reality of the Work

SALT LAKE CITY AIRPORT BOARD

AGENDA: DISCUSSION ITEM (C)
DATE: 14 December 2016
TO: Airport Board
FROM: Marco Kunz, Senior City Attorney
SUBJECT: **Public Meetings Training**

Marco Kunz will present the "Open and Public Meetings Training" which is required by State law to the Board.

SALT LAKE CITY DEPARTMENT OF
AIRPORTS

Airport Advisory Board Training

2016



UTAH OPEN AND PUBLIC MEETINGS ACT



Utah Code
§§52-4-101 through 305

WHAT DOES THE OPEN MEETINGS ACT DO?



Requires **MEETINGS** of a **PUBLIC BODY** to be open to the public, unless an **EXCEPTION** is available under the Act that allows the meeting to be **CLOSED**.

PUBLIC BODY

The **AIRPORT BOARD** is a public body for purposes of the Act

MEETING

- **CONVENING**
- At least a **QUORUM**
- To **DISCUSS, RECEIVE COMMENTS,**
or **ACT**

Which gatherings of the Airport Advisory Board are subject to the Act?

Yes:

- Electronic Meetings
- Retreats, Workshops

No:

- Chance meetings, group photos, ceremonial events
- No Quorum (Simple majority of all Board members specified by Ordinance)

WHAT DOES THE ACT REQUIRE?

Minimal compliance in 3 Basic Areas:



NOTICE



WHAT **PUBLIC NOTICE** IS REQUIRED?

Annual Meeting Schedule:

- Scheduled meetings: **date, time, and place**

Each meeting:

- **TIME:** Not less than 24 hours
- **CONTENT:** **Agenda, Date, Time, Place**
- **POSTED|PUBLISHED**

Emergency Meetings:

- Best notice practicable
- Attempt to notify all Board members
- **MAJORITY** of Board members must approve holding the meeting.



»» Agenda

1. Reasonable Specificity – Each topic

2. Matters Not on the Agenda

Public Comments – No final action

CLOSED MEETINGS

A meeting may be closed **ONLY** to discuss **SPECIFIED TOPICS**

- ◇ An INDIVIDUAL: character, professional competence, physical or mental health
- ◇ COLLECTIVE BARGAINING strategy;
- ◇ Pending or reasonably imminent LITIGATION;
- ◇ REAL PROPERTY purchase, exchange, lease (when it would disclose appraisal or value and prevent transaction) or sale;
- ◇ Deployment of SECURITY DEVICES
- ◇ CRIMINAL CONDUCT investigations



CLOSED MEETINGS

Procedure

1. Quorum present
2. Two-thirds of Board members present approve the closing.
3. Publicly announce and enter in the minutes:
 - (a) General reason for closing meeting
 - (b) Location of meeting
 - (c) Vote by name



OPEN MEETING RECORDS

- **WRITTEN** minutes & **RECORDING**
(SITE VISIT : EITHER, IF NO VOTE TAKEN)
- Minutes must include:
 - Date, Time, Place
 - Names of Board members present and absent
 - Substance of all matters proposed, discussed, or decided;
 - Record of each vote
 - Name of anyone who provided testimony/comments and summary of comments
 - Other information a Board member requests
- **OFFICIAL RECORD = WRITTEN MINUTES**



CLOSED MEETING RECORDS

- **RECORDING** required - Written minutes optional
- **MUST INCLUDE**
 - Date, time, and place of the meeting
 - Names of all present and absent
(unless disclosure would impair confidentiality necessary for original purpose of closing the meeting)
- **NO RECORD REQUIRED** if discussing
 - Character, professional competence, or physical or mental health of an individual
 - Deployment of security personnel, devices, or systems.
NOTE: Person presiding must sign sworn statement affirming sole purpose for closing meeting was to discuss protected matters.
- **PROTECTED RECORDS** under GRAMA

CONFIDENTIAL

ELECTRONIC MEETINGS

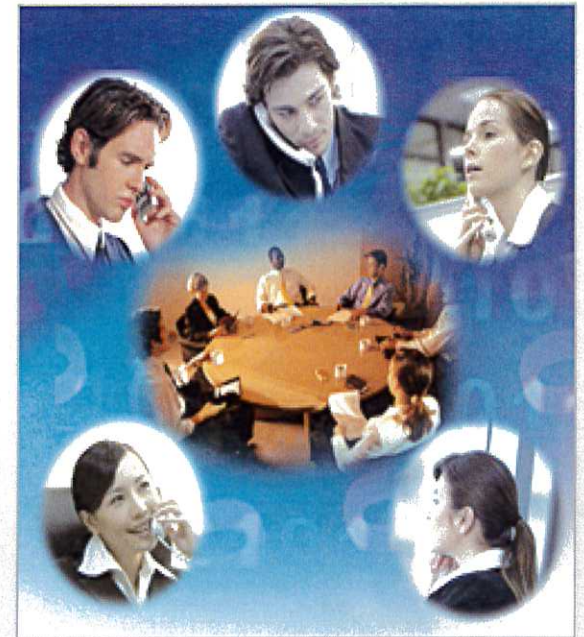
Resolution Adopted ✓

Notice

- Public notice of the meeting in usual way; and
- Post written notice at the anchor location;
- Provide Board members:
 - At least 24 hours notice
 - Description how to connect

Anchor Locations

- One or more anchor locations for meeting, including Airport Board Room.
- Space for public



PUBLIC COMMENT/PARTICIPATION



- At **DISCRETION** of Board Chair
- **TIME LIMITS** for each comment
- May limit to **AGENDA**
- No **FINAL ACTION** if not on agenda
- **WILLFULLY DISRUPTS AND**
orderly conduct of meeting **SERIOUSLY COMPROMISED**
--May REMOVE from meeting

VIOLATIONS



CRIMINAL OFFENSE

to knowingly violate the Open and Public Meetings Act

- Enforced by Attorney General and County Attorneys
- Private individuals can bring lawsuit
- Action can be voided, enjoined



SALT LAKE CITY DEPARTMENT OF AIRPORTS



SALT LAKE CITY AIRPORT BOARD

AGENDA: DISCUSSION ITEM (D)
DATE: 14 December 2016
TO: Airport Board
FROM: Maureen Riley, Executive Director
SUBJECT: **Powers and Duties of the Airport Board**

Margaret Plane, City Attorney, will present a review of the powers and duties of the Airport Board.

SALT LAKE CITY AIRPORT BOARD

AGENDA: DISCUSSION ITEM (E)
DATE: 14 December 2016
TO: Airport Board
FROM: Maureen Riley, Executive Director
SUBJECT: **Ground Transportation Update**

Nancy Volmer, Director of Public Relations and Marketing, and Larry Bowers, Operations Manager, will present a Ground Transportation update (presentation on file).



Salt Lake City
Department of Airports

Ground Transportation Update

Airport Advisory Board
Work Session
December 14, 2016

Ground Transportation Timeline

- **October 25, 2011** – Taxicab contracts issued to Ace and Total.
- **October 28, 2011** – Judge grants restraining order preventing City from implementing contracts.
- **March 2012** – Utah Legislature passed HB104, limiting / removing City's ability to regulate vehicles to be used in ground transportation by age or mileage.
- **December 2013** – Judge lifts taxicab restraining order.
- **Spring 2014** – Lyft and UBER meet with City Council members to discuss entry into SLC market.

Ground Transportation Timeline

- **November 25, 2014** – City Council eliminates ordinance restrictions for on demand transportation. As a result, Ace and Total ask for and are granted a release from their contracts.
- **March 25, 2015** – Utah Legislature passes bill regulating Transportation Network Companies. Bill places regulation under the State and prohibits other government agencies from regulation of TNC's.
- **June 10, 2015** – City / Airport sets “maximum rate fare zones” for transportation originating at the Airport. (rate restrictions continued December 2015 and again June 2016).
- **September 10, 2015** – TNC operator “Lyft” is permitted to operate at the Airport.
- **September 29, 2015** – TNC operator “UBER” is permitted to operate at the Airport.

Ground Transportation Staging Lot

On-Demand Queue

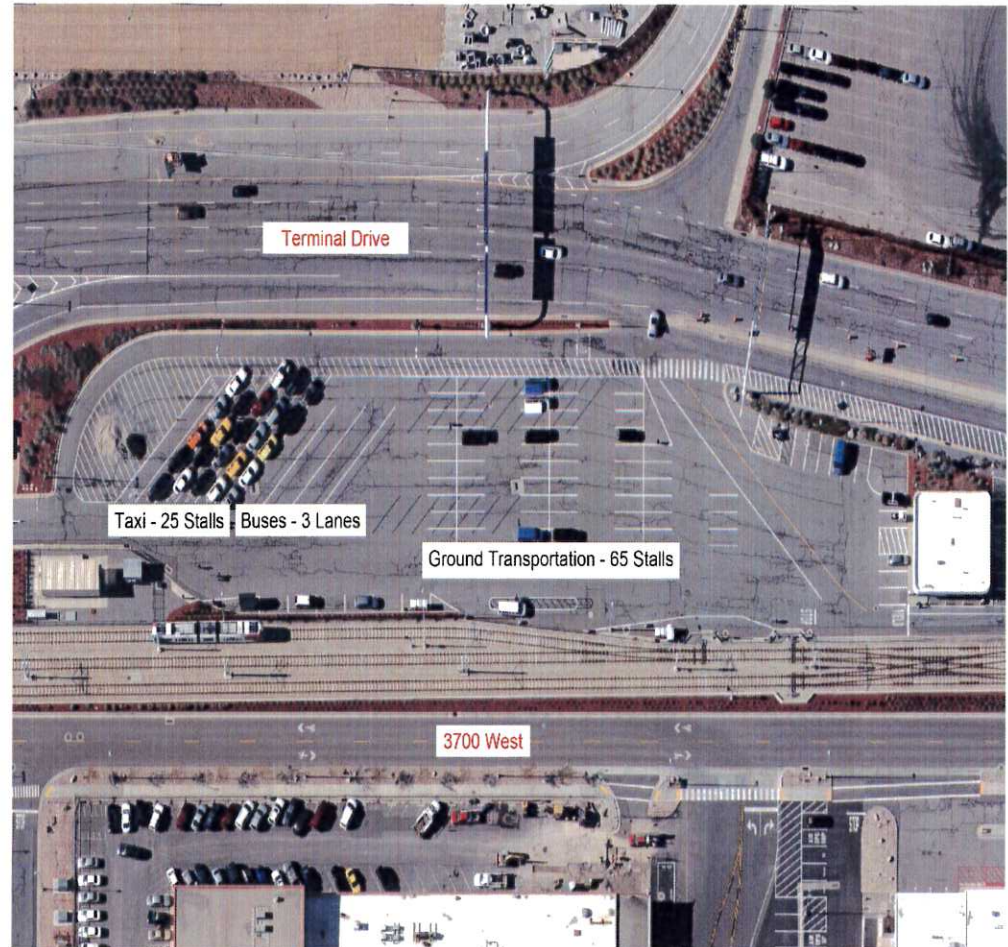
- First in, first out
- 25 maximum parking spaces

Pre-arranged Space

- 73 spaces available
- Proof of reservation required
- Limited to 1 hour of wait time

Off-airport Staging Area

- Privately operated



Ground Transportation Recent Developments

Problem

- One GT operator not complying with rules and regulations for Airport staging lot operation
- Disrupted the process established by operators
- Resulted in traffic circulation congestion and altercations

Responses

- Airport Police issued traffic citations
- GT staff managing lot issued some warnings; follow-up with citations if necessary
- Airport GT sent reminder of staging lot regulations to operators



Ground Transportation Construction Impact

Future

-Staging area moves to south end of Airport campus in March 2017



Ground Transportation Market Conditions

Transportation Network Companies

- Spring 2014 - Uber and Lyft begin operating illegally throughout the city
- 2015 Legislative Session – TNC Act passes, allowing legal operation
- As of Nov. 2016 has captured 40 percent of Airport market share



Ground Transportation Market Conditions

Rate Restrictions

- **6/21/15** – Notice of Rate Restrictions issued
- **12/18/15** – Rate restrictions continued
- **6/15/16** – Rate restrictions continued
- **12/12/16**- Rate restrictions continued



Ground Transportation Market Conditions

On-demand Providers

- Past: 3 cab companies; 268 vehicles, plus on-demand providers
- Present: 530 registered GT companies; 2,070 vehicles.



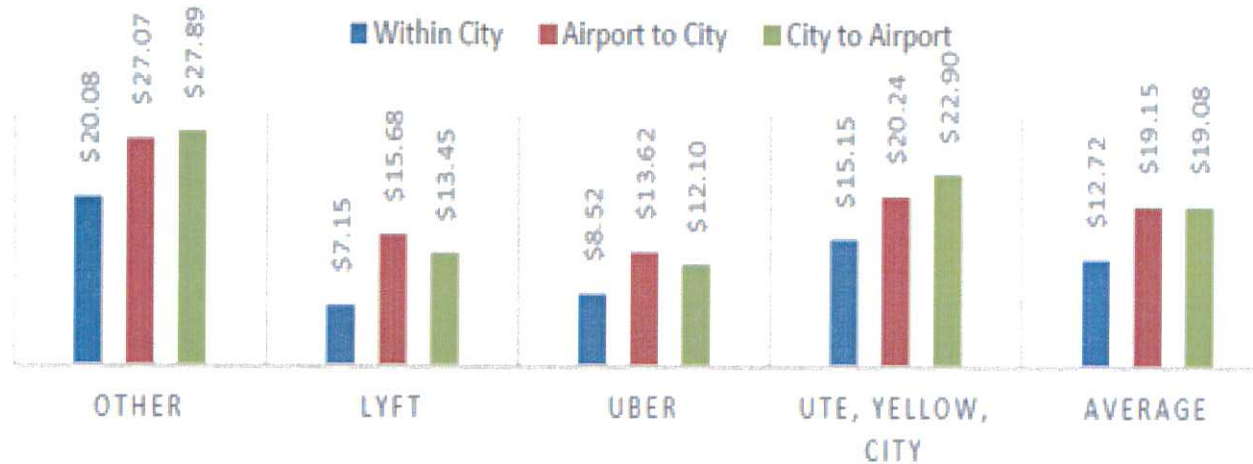
Ground Transportation Automated Vehicle Identification (AVI)

REVENUE	July		Aug		Sept		Oct		Nov		Dec		YTD	
AVI	\$ 172,172	81%	\$182,189	78%	\$ 160,722	77%	\$ 157,785	75%					\$ 1,563,162	74%
Uber	\$ 36,165	17%	\$45,364	19%	\$ 40,173	19%	\$ 43,806	21%					\$ 310,919	15%
Lyft	\$ 5,154	2%	\$5,704	2%	\$ 6,999	3%	\$ 7,488	4%					\$ 41,469	2%
Total	\$ 213,491		\$ 233,258		\$ 207,895		\$ 209,080						2,123,200	
TRIPS														
AVI	74351	68%	82,350	65%	69,577	63%	69,612	61%					669,660	62%
Uber	30316	28%	38,192	30%	33,918	31%	37,025	33%					261,259	24%
Lyft	4817	4%	5,704	5%	6,541	6%	6,998	6%					39,416	4%
Total	109,484		126,246		110,036		113,635						1,076,670	

Ground Transportation Costs

Ground Transportation
Cumulative Data for May 2016 to October 2016

6 MONTH AVERAGE COST OF RIDE



Customer Feedback

2016

-51 complaints received
from January through
present

-Primarily fare-related
outside of city limits



Ground Transportation

- Questions?



SALT LAKE CITY AIRPORT BOARD

AGENDA: DISCUSSION ITEM (F)
DATE: 14 December 2016
TO: Airport Board
FROM: Maureen Riley, Executive Director
SUBJECT: **Nominations for Board Chair and Vice-Chair**

The Board will be asked to make nominations for a new Board Chair and Vice-Chair. Voting will be conducted at the January 2017 meeting.

DEPARTMENT OF AIRPORTS
BOARD WORK SESSION

14 December 2016

INFORMATIONAL ITEMS

SALT LAKE CITY DEPARTMENT OF AIRPORTS
(An Enterprise Fund of Salt Lake City Corporation)
Statements of Net Position (Unaudited)

<i>October 31,</i>	2016	2015
ASSETS		
Current Assets		
Cash and cash equivalents		
Unrestricted	\$ 10,000,000	\$ 10,000,000
Designated for future development	160,252,412	160,457,281
Current investments	751,612	-
Airline and rental fees receivable	18,960,276	14,903,103
Other current assets	4,114,104	4,423,011
Total current assets	194,078,405	189,783,396
Noncurrent Assets		
Restricted cash and cash equivalents		
Construction projects	134,809,989	105,995,850
Customer facility charges	354,525	60,743,071
Operation and maintenance reserve fund	16,256,567	15,669,933
Renewal and replacement reserve fund	5,000,000	5,000,000
Noncurrent investments	44,199,230	44,950,842
Total noncurrent assets and investments	200,620,311	232,359,696
Capital assets		
Land	99,346,721	99,156,549
Building and improvements	1,278,012,265	1,177,910,127
Equipment	140,190,926	133,821,404
Construction in progress	273,579,409	225,507,647
Total capital assets - at cost	1,791,129,321	1,636,395,727
Less accumulated depreciation		
Building and improvements	801,316,598	752,464,484
Equipment	87,900,030	85,486,873
Total accumulated depreciation	889,216,628	837,951,357
Net capital assets	901,912,693	798,444,370
Other assets		
Other receivables	1,189,506	802,632
Other long-term assets	14,489	91,574
Total other assets	1,203,995	894,206
Total noncurrent assets	1,103,736,999	1,031,698,273
Total Assets	\$ 1,297,815,404	\$ 1,221,481,668
Deferred Outflows of Resources		
Pensions	10,181,182	3,566,982
Total assets and deferred outflows of resources	\$ 1,307,996,586	\$ 1,225,048,650

SALT LAKE CITY DEPARTMENT OF AIRPORTS
(An Enterprise Fund of Salt Lake City Corporation)
Statements of Net Position (Unaudited)

<i>October 31,</i>	2016	2015
LIABILITIES		
Current Liabilities		
Accounts payable	\$ 12,020,395	\$ 8,416,404
Accrued compensation	2,081,314	1,603,094
Net OPEB obligation	-	235,690
Other accrued liabilities	5,007,347	5,265,539
Deposits and advance rentals	7,926,687	3,811,870
Total current liabilities	27,035,743	19,332,596
Noncurrent Liabilities		
Noncurrent compensation liability	3,629,123	3,682,739
Net pension liability	25,465,134	20,232,458
Pollution remediation liability	172,671	189,487
Other long-term liabilities	3,560,398	2,212,842
Total noncurrent liabilities	32,827,326	26,317,527
Total Liabilities	59,863,069	45,650,123
Deferred Inflows of Resources		
Pensions	1,937,268	2,128,856
NET POSITION		
Restricted for construction projects	134,809,989	105,995,850
Restricted for customer facility charges	354,525	60,743,071
Restricted for operation and maintenance reserve fund	16,256,567	15,669,933
Restricted for renewal and replacement reserve fund	5,000,000	5,000,000
Total Restricted	156,421,081	187,408,854
Net investment in capital assets	901,912,693	798,444,370
Unrestricted	187,862,475	191,416,448
Net Position	\$ 1,246,196,249	\$ 1,177,269,672
Total liabilities, deferred inflows of resources, and net position	\$ 1,307,996,586	\$ 1,225,048,650

SALT LAKE CITY DEPARTMENT OF AIRPORTS

(An Enterprise fund of Salt Lake City Corporation)

Statements of Revenues, Expenses, and Changes in Fund Net Position (Unaudited)

<i>for the four month period ended October 31,</i>	2016	2015
Operating Revenues		
Airfield	\$ 11,959,128	\$ 10,643,983
Terminals	17,986,576	17,158,392
Landside	21,300,402	19,572,797
Auxiliary airports	570,063	250,563
General aviation	591,796	684,479
Support areas	2,495,636	2,378,768
Other	789,538	672,697
Operating revenues	55,693,140	51,361,679
Less airline revenue sharing	(3,942,504)	(3,166,904)
Total operating revenues	51,750,636	48,194,775
Operating Expenses		
Airfield	8,545,051	8,197,466
Terminals	13,175,659	12,188,849
Landside	4,113,659	3,854,483
Auxiliary airports	931,975	482,899
General aviation	340,091	386,382
Support areas	442,310	336,001
Roads and grounds	2,416,522	2,373,579
Other	869,122	918,757
Total operating expenses before depreciation	30,834,389	28,738,416
Operating Income Before Depreciation	20,916,247	19,456,359
Depreciation Expense	21,797,954	20,635,292
Operating Loss	(881,707)	(1,178,933)
Non-Operating Revenues (Expenses)		
Passenger facility charges	14,870,347	14,086,561
Customer facility charges	5,954,181	5,219,290
Gain (Loss) on disposition of property and equipment	38,225	157,347
Interest income	815,970	609,876
Net increase (decrease) in the fair value of investments	(98,537)	-
Net non-operating income (expense)	21,580,185	20,073,073
Capital Contributions		
Contributions and grants, principally Airport Improvement Program	3,263,137	394,203
Total capital contributions	3,263,137	394,203
Net Position		
Increase in net position	23,961,615	19,288,344
Net Position, beginning of period	1,222,234,634	1,157,981,328
Net Position, end of period	\$ 1,246,196,249	\$ 1,177,269,672

SALT LAKE CITY DEPARTMENT OF AIRPORTS

(An Enterprise fund of Salt Lake City Corporation)

OPERATING REVENUES AND EXPENDITURES TO BUDGET (Unaudited)

	JULY - OCT 2016 ACTUALS	JULY - OCT 2016 BUDGET	SURPLUS/ DEFICIT	PERCENT DIFFERENT
Revenues:				
Landing Fees	\$ 10,151,284	\$ 9,106,600	\$ 1,044,684	11.5%
Fuel Farm	176,029	176,000	29	0.0%
Aircraft Remain Overnight Fees	118,300	103,435	14,865	14.4%
Cargo Bldg. & Ramp Use Fee	532,816	531,330	1,486	0.3%
Security Charges to TSA	106,799	108,240	(1,441)	-1.3%
Extraordinary Service Charges	21,989	25,545	(3,556)	-13.9%
Passenger Loading Bridges	541,200	565,520	(24,320)	-4.3%
Tenant Telephone Fees	107,408	125,355	(17,947)	-14.3%
Terminal Rents	10,697,593	10,733,900	(36,307)	-0.3%
General Aviation Hangars	404,111	394,870	9,241	2.3%
FBO Hangars/Fuel Oil Royalty	99,420	202,595	(103,175)	-50.9%
Flight Kitchens	602,743	512,305	90,438	17.7%
Other Buildings & Office Space	1,814,935	1,801,310	13,625	0.8%
Food Service & Vending	3,608,656	3,406,170	202,486	5.9%
News/Gift Shop	2,010,091	1,935,495	74,596	3.9%
Car Rental	9,091,853	8,340,825	751,028	9.0%
Leased Site Areas	710,698	713,965	(3,267)	-0.5%
Auto Parking/Ground Transportation	12,190,069	12,479,720	(289,652)	-2.3%
Advertising	385,367	349,860	35,507	10.1%
State Aviation Fuel Tax	1,070,723	984,480	86,243	8.8%
Military	38,428	48,920	(10,492)	-21.4%
Glycol Recycling Sales	123,670	103,320	20,350	19.7%
ARFF Training	287,972	341,550	(53,578)	-15.7%
Other	800,987	385,310	415,677	107.9%
Less: Airline Revenue Sharing	(3,942,504)	(3,690,400)	(252,104)	6.83%
Total Operating Revenues	51,750,636	49,786,220	1,964,417	3.9%
Expenses:				
Salary & Wages	11,079,271	11,239,890	160,619	1.4%
Employee Benefits	5,526,449	5,605,715	79,266	1.4%
Maintenance Supplies	1,709,601	3,063,920	1,354,319	44.2%
Automotive Supplies	679,491	725,000	45,509	6.3%
Other Supplies	469,701	801,458	331,757	41.4%
Insurance Premiums	1,300,892	455,000	(845,892)	-185.9%
Janitorial Service	2,230,977	2,263,200	32,223	1.4%
Maintenance Contracts	645,361	544,800	(100,561)	-18.5%
Other Contractual Services	2,101,861	2,224,942	123,081	5.5%
Professional & Tech Service	813,532	1,187,800	374,268	31.5%
Utilities	2,227,680	2,448,000	220,320	9.0%
Administrative Service Fee	476,491	412,500	(63,991)	-15.5%
Aircraft Rescue Fire Fighting	1,566,866	1,444,400	(122,466)	-8.5%
Other Expenses	375,023	1,402,625	1,027,602	73.3%
Total Operating Expenses	31,203,195	33,819,250	2,616,055	7.7%
Capital Costs - E&M Division	368,807	368,807	0	0.0%
Total Operating Expense	30,834,389	33,450,443	2,616,054	7.8%
Operating Income	\$ 20,916,247	\$ 16,335,777	\$ 4,580,470	28.0%

SALT LAKE CITY DEPARTMENT OF AIRPORTS

(An Enterprise fund of Salt Lake City Corporation)

OPERATING REVENUES AND EXPENDITURES TO PRIOR YEAR (Unaudited)

	JULY - OCTOBER 2016	JULY - OCTOBER 2015	SURPLUS/ (DEFICIT)	PERCENT CHANGE
Revenues:				
Landing Fees	\$ 10,151,284	\$ 8,972,050	\$ 1,179,234	13.1%
Fuel Farm	176,029	176,030	(0)	0.0%
Aircraft Remain Overnight Fees	118,300	82,750	35,550	43.0%
Cargo Bldg. & Ramp Use Fee	532,816	527,728	5,088	1.0%
Security Charges to TSA	106,799	100,201	6,598	6.6%
Extraordinary Service Charges	21,989	24,909	(2,920)	-11.7%
Passenger Loading Bridges	541,200	759,244	(218,044)	-28.7%
Tenant Telephone Fees	107,408	123,926	(16,517)	-13.3%
Terminal Rents	10,697,593	10,042,228	655,365	6.5%
Executive Terminal	-	32,738	(32,738)	-100.0%
General Aviation Hangars	404,111	386,921	17,190	4.4%
FBO Hangars/Fuel Oil Royalty	99,420	165,866	(66,446)	-40.1%
Flight Kitchens	602,743	492,323	110,420	22.4%
Other Buildings & Office Space	1,814,935	1,804,703	10,231	0.6%
Food Service & Vending	3,608,656	3,359,037	249,619	7.4%
News/Gift Shops	2,010,091	1,906,226	103,864	5.4%
Car Rental	9,091,853	7,425,305	1,666,547	22.4%
Leased Site Areas	710,698	635,252	75,446	11.9%
Auto Parking/Ground Transportation	12,190,069	12,128,213	61,855	0.5%
Advertising	385,367	339,872	45,496	13.4%
State Aviation Fuel Tax	1,070,723	1,002,289	68,435	6.8%
Military	38,428	32,354	6,075	18.8%
Glycol Recycling Sales	123,670	68,148	55,522	81.5%
ARFF Training	287,972	315,159	(27,187)	-8.6%
Other	800,987	458,206	342,781	74.8%
Less: Airline Revenue Sharing	(3,942,504)	(3,166,904)	(775,600)	24.5%
Operating Revenue	51,750,636	48,194,775	3,555,861	7.4%
Expenses:				
Salary & Wages	11,079,271	10,644,492	434,779	4.1%
Employee Benefits	5,526,449	5,154,164	372,285	7.2%
Maintenance Supplies	1,709,601	1,505,783	203,818	13.5%
Automotive Supplies	679,491	574,164	105,327	18.3%
Other Supplies	469,701	338,871	130,830	38.6%
Insurance Premiums	1,300,892	330,869	970,023	293.2%
Janitorial Service	2,230,977	2,174,330	56,647	2.6%
Maintenance Contracts	645,361	712,331	(66,971)	-9.4%
Other Contractual Services	2,101,861	1,025,911	1,075,950	104.9%
Professional & Tech Service	813,532	1,927,156	(1,113,623)	-57.8%
Utilities	2,227,680	2,198,130	29,550	1.3%
Administrative Service Fee	476,491	478,335	(1,844)	-0.4%
Aircraft Rescue Fire Fighting	1,566,866	1,435,308	131,559	9.2%
Other Expenses	375,023	613,442	(238,419)	-38.9%
Total Operating Expenses	31,203,195	29,113,285	2,089,910	7.2%
Capital Costs - E&M Division	368,807	374,869	(6,062)	-1.6%
Total Operating Expense	30,834,389	28,738,416	2,095,973	7.3%
Operating Income	\$ 20,916,247	\$ 19,456,359	\$ 1,459,888	7.5%



**SALT LAKE CITY INTERNATIONAL AIRPORT
AIR TRAFFIC STATISTICS AND ACTIVITY REPORT
TEN MONTHS ENDED OCTOBER 2016**

	OCTOBER 2016	CHANGE	YTD 2016	CHANGE	12 MO ROLLING Ending 10/2016	CHANGE
PASSENGERS						
<i>DOMESTIC</i>						
Enplaned	948,412	1.93%	9,427,674	3.45%	11,105,715	3.46%
Deplaned	932,165	1.34%	9,388,918	3.35%	11,096,268	3.34%
TOTAL DOMESTIC	1,880,577	1.64%	18,816,592	3.40%	22,201,983	3.40%
<i>INTERNATIONAL</i>						
Enplaned	33,402	56.67%	320,433	33.84%	356,750	33.95%
Deplaned	34,038	52.64%	329,884	33.56%	364,811	33.92%
TOTAL INTERNATIONAL	67,440	54.61%	650,317	33.70%	721,561	33.94%
TOTAL PASSENGERS	1,948,017	2.86%	19,466,909	4.19%	22,923,544	4.15%
LANDED WEIGHT						
Air Carriers	1,094,982,136	6.63%	10,836,128,836	5.12%	12,780,427,505	4.38%
Cargo Carriers	87,005,021	-1.11%	865,812,356	6.84%	1,089,985,397	7.97%
TOTAL LANDED WEIGHT (LBS)	1,181,987,157	6.02%	11,701,941,192	5.24%	13,870,412,902	4.65%
MAIL						
Enplaned	1,725,411	-27.47%	17,188,644	-17.40%	20,489,573	-13.50%
Deplaned	1,132,238	-20.26%	7,831,464	-26.22%	9,956,091	-15.32%
TOTAL MAIL (LBS)	2,857,649	-24.77%	25,020,108	-20.38%	30,445,664	-14.11%
CARGO						
Enplaned	13,355,980	-11.29%	135,267,972	-1.65%	166,388,150	-0.61%
Deplaned	15,491,142	1.71%	151,624,654	9.22%	183,648,375	9.55%
TOTAL CARGO (LBS)	28,847,122	-4.75%	286,892,626	3.81%	350,036,525	4.47%
MAIL & CARGO						
Enplaned	6,678	-11.29%	67,634	-1.65%	83,194	-0.61%
Deplaned	7,746	1.72%	75,812	9.21%	91,824	9.55%
TOTAL MAIL & CARGO (TONS)	14,424	-4.75%	143,446	3.81%	175,018	4.47%
AIRCRAFT OPERATIONS						
Passenger Aircraft	20,320	5.65%	204,238	4.19%	241,776	3.24%
All-Cargo Aircraft	1,610	-4.28%	16,236	7.06%	19,800	6.60%
General Aviation	4,117	1.63%	42,655	-7.20%	50,126	-9.68%
Military	633	-38.42%	5,908	20.62%	7,146	36.22%
TOTAL AIRCRAFT OPERATIONS	26,680	2.64%	269,037	2.67%	318,848	1.70%

SALT LAKE CITY INTERNATIONAL AIRPORT
TEN MONTHS ENDED OCTOBER 2016
Based on Total Enplanements

MARKET SHARE

	OCTOBER 2015	MARKET SHARE	OCTOBER 2016	MARKET SHARE	YTD 2015	MARKET SHARE	YTD 2016	MARKET SHARE	12 MO ROLLING Ending 10/2015	12 MO ROLLING Ending 10/2016	MARKET SHARE
AIR CANADA	0	0.00%	2,045	0.21%	0	0.00%	11,716	0.12%	0	11,716	0.10%
ALASKA	32,567	3.42%	33,446	3.41%	355,030	3.80%	356,707	3.66%	412,751	416,552	3.63%
AMERICAN	38,924	4.09%	57,117	5.82%	384,321	4.11%	638,967	6.55%	433,476	695,412	6.07%
DELTA	670,877	70.49%	693,434	70.63%	6,548,238	70.01%	6,801,697	69.77%	7,709,408	8,026,399	70.02%
FRONTIER	18,040	1.90%	21,346	2.17%	165,327	1.77%	191,840	1.97%	216,628	222,021	1.94%
JETBLUE	17,419	1.83%	20,994	2.14%	177,712	1.90%	213,954	2.19%	209,028	247,561	2.16%
KLM ROYAL DUTCH	0	0.00%	2,483	0.25%	0	0.00%	13,431	0.14%	0	13,431	0.12%
SOUTHWEST	104,622	10.99%	104,975	10.69%	1,002,293	10.72%	1,040,613	10.68%	1,180,633	1,219,994	10.64%
UNITED	44,313	4.66%	45,105	4.59%	443,939	4.75%	474,613	4.87%	514,067	561,540	4.90%
US AIRWAYS	24,744	2.60%	0	0.00%	271,675	2.90%	0	0.00%	318,425	42,571	0.37%
Charters	243	0.03%	869	0.09%	4,433	0.05%	4,569	0.05%	5,922	5,268	0.05%
TOTAL ENPLANEMENTS	951,749	100%	981,814	100%	9,352,968	100%	9,748,107	100%	11,000,338	11,462,465	100%

PERCENT CHANGE YOY

	OCTOBER 2015	OCTOBER 2016	PERCENT CHANGE	YTD 2015	YTD 2016	PERCENT CHANGE	12 MO ROLLING Ending 10/2015	12 MO ROLLING Ending 10/2016	PERCENT CHANGE
AIR CANADA	0	2,045	100.00%	0	11,716	100.00%	0	11,716	100.00%
ALASKA	32,567	33,446	2.70%	355,030	356,707	0.47%	412,751	416,552	0.92%
AMERICAN	38,924	57,117	46.74%	384,321	638,967	66.26%	433,476	695,412	60.43%
DELTA	670,877	693,434	3.36%	6,548,238	6,801,697	3.87%	7,709,408	8,026,399	4.11%
FRONTIER	18,040	21,346	18.33%	165,327	191,840	16.04%	216,628	222,021	2.49%
JETBLUE	17,419	20,994	20.52%	177,712	213,954	20.39%	209,028	247,561	18.43%
KLM ROYAL DUTCH	0	2,483	100.00%	0	13,431	100.00%	0	13,431	100.00%
SOUTHWEST	104,622	104,975	0.34%	1,002,293	1,040,613	3.82%	1,180,633	1,219,994	3.33%
UNITED	44,313	45,105	1.79%	443,939	474,613	6.91%	514,067	561,540	9.23%
US AIRWAYS	24,744	0	-100.00%	271,675	0	-100.00%	318,425	42,571	-86.63%
Charters	243	869	257.61%	4,433	4,569	3.07%	5,922	5,268	-11.04%
TOTAL ENPLANEMENTS	951,749	981,814	3.16%	9,352,968	9,748,107	4.22%	11,000,338	11,462,465	4.20%

**SALT LAKE CITY INTERNATIONAL AIRPORT
LANDING ACTIVITY
TEN MONTHS ENDED OCTOBER 2016**

	OCTOBER 2015	OCTOBER 2016	CHANGE	YTD 2015	YTD 2016	CHANGE	12 MO ROLLING Ending 10/2016	% CHANGE
DELTA								
SkyWest (Delta Connection)	515,714,700	558,677,960	8.33%	5,083,245,945	5,422,845,620	6.68%	6,359,248,580	6.25%
Compass (Delta Connection)	198,257,000	209,226,863	5.53%	2,027,023,000	2,082,099,491	2.72%	2,503,685,091	2.23%
FRONTIER	19,488,700	2,550,286	-86.91%	172,055,754	131,683,205	-23.46%	156,038,486	-24.73%
JETBLUE	16,600,680	20,231,434	21.87%	163,192,846	186,809,448	14.47%	218,050,962	1.30%
KLM ROYAL DUTCH AIRLINES	18,343,800	22,467,600	22.48%	189,724,118	214,720,856	13.18%	251,124,056	11.19%
SOUTHWEST	0	5,213,000	100.00%	0	27,669,000	100.00%	27,669,000	100.00%
UNITED	107,912,000	111,280,000	3.12%	1,036,770,000	1,057,574,000	2.01%	1,252,968,000	1.22%
Express Jet	19,348,380	19,186,400	-0.84%	174,173,238	207,270,620	19.00%	252,848,400	36.84%
Mesa / United Express	0	0	0.00%	2,380,968	648,196	-72.78%	780,472	-91.84%
Republic Airways Holdings	75,000	0	-100.00%	6,897,463	2,100,000	-69.55%	2,400,000	-65.20%
SkyWest (United Express)	1,240,000	3,768,159	203.88%	20,460,000	12,802,275	-37.43%	14,548,587	-36.24%
Shuttle America (United Express)	24,368,399	26,715,787	9.63%	253,602,061	273,679,728	7.92%	321,413,849	6.02%
Trans States	2,024,736	0	-100.00%	15,474,768	10,123,680	-34.58%	11,642,232	100.00%
US AIRWAYS	0	0	0.00%	0	3,033,387	100.00%	3,033,387	100.00%
Mesa (US Airways Express)	27,917,464	0	-100.00%	292,522,864	0	-100.00%	50,329,200	-85.70%
SkyWest (US Airways)	0	0	0.00%	0	0	0.00%	0	0.00%
Subtotal SCHEDULED CARRIERS:	1,022,282,735	1,086,795,990	6.31%	10,239,867,732	10,748,145,568	4.96%	12,676,636,471	4.23%
CHARTER CARRIERS								
ALLEGiant AIR	0	0	0.00%	1,175,000	1,746,000	48.60%	2,084,000	30.78%
BIGHORN AIRWAYS	0	0	0.00%	53,120	27,320	-48.57%	27,320	-48.57%
BOUTIQUE AIR	0	1,548,990	100.00%	0	9,765,010	100.00%	9,765,010	100.00%
BUSINESS JET SOLUTIONS	0	0	0.00%	935,550	0	-100.00%	0	-100.00%
D&D AVIATION	15,300	0	-100.00%	601,820	840,650	39.68%	1,023,970	58.09%
DELTA PRIVATE JETS	122,950	369,750	200.73%	3,137,885	3,649,315	16.30%	4,176,065	12.26%
EXECUTIVE JET MANAGEMENT	307,000	28,466	-90.73%	4,401,265	3,941,485	-10.45%	4,631,000	-8.20%
FLIGHT OPTIONS	47,500	282,545	494.83%	4,434,070	2,495,895	-43.71%	3,163,500	-40.99%
KEYLIME AIR	241,932	222,068	-8.21%	4,388,998	666,207	-84.82%	888,275	-83.69%
NETJETS	1,605,290	2,113,120	31.63%	23,447,595	29,466,208	25.67%	34,580,788	25.86%
SIERRA PACIFIC	0	0	0.00%	311,000	743,000	138.91%	743,000	138.91%
SUN COUNTRY	146,300	0	-100.00%	146,300	1,024,100	600.00%	1,024,100	133.33%
SWIFT AIR	121,000	121,000	0.00%	1,292,925	2,541,000	96.53%	3,025,000	97.08%
XOJET	355,650	451,050	26.82%	4,221,750	4,950,600	17.26%	5,761,200	10.81%
OTHER CHARTER	1,694,117	3,049,157	79.99%	19,950,474	26,126,478	30.96%	32,897,806	37.06%
Subtotal CHARTER CARRIERS:	4,657,039	8,186,146	75.78%	68,497,752	87,983,268	28.45%	103,791,034	26.07%
CARGO CARRIERS								
ABX AIR (DHL)	0	0	0.00%	544,000	320,000	-41.18%	320,000	-71.98%
AERO CHARTER & TRANSPORT	150,700	143,850	-4.55%	1,452,200	1,431,650	-1.42%	1,719,350	-0.79%
AIR TRANSPORT INTERNATIONAL	0	0	0.00%	47,224,000	18,000	-99.96%	30,100	-99.46%
AIRNET SYSTEMS	0	0	0.00%	0	0	0.00%	0	0.00%
ALPINE AVIATION	0	338,100	100.00%	0	869,400	100.00%	869,400	100.00%
AMERIFLIGHT	4,875,700	3,938,794	-19.22%	44,909,100	42,911,294	-4.45%	52,323,094	-3.78%
CORPORATE AIR (BILLINGS)	960,500	850,000	-11.50%	8,840,000	9,001,500	1.83%	10,863,000	2.57%
EMPIRE	650,790	614,635	-5.56%	6,290,970	6,118,770	-2.74%	7,348,040	-1.93%
FEDEX EXPRESS	43,091,000	45,430,800	5.43%	408,958,100	459,962,200	12.47%	576,197,500	12.53%
SOUTHERN AIR INC	0	5,526,172	100.00%	0	56,981,255	100.00%	68,618,306	100.00%
UPS	33,333,040	28,883,600	-13.35%	287,023,520	280,862,960	-2.15%	363,146,060	1.01%
WESTERN AIR EXPRESS	518,600	574,000	10.68%	2,279,500	4,451,700	95.29%	5,341,700	33.18%
OTHER CARGO	4,397,800	705,070	-83.97%	2,945,734	2,883,627	-2.11%	2,937,947	2.37%
Subtotal CARGO CARRIERS:	87,978,130	87,005,021	-1.11%	810,467,124	865,812,356	6.83%	1,089,985,397	7.96%
TOTAL LANDINGS	1,114,917,904	1,181,987,157	6.02%	11,118,832,608	11,701,941,192	5.24%	13,870,412,902	4.65%



Salt Lake City
Department of Airports

COMPARISON OF ON TIME OPERATIONS
September 2016

ARRIVALS

Airport	Flights	% On Time	Rank
ATL HARTSFIELD-JACKSON ATLANTA INTL	31,482	90.5	1
SLC SALT LAKE CITY INTL	8,867	90.5	2
DTW DETROIT METRO WAYNE CNTY	10,247	90.2	3
MDW CHICAGO MIDWAY	7,277	88.9	4
IAH HOUSTON GEORGE BUSH	10,775	88.2	5
PHX PHOENIX SKY HARBOR INTL	11,965	88.1	6
BWI BALTIMORE/WASHINGTON INTL	7,835	87.9	7
DEN DENVER INTL	19,265	87.1	8
PDX PORTLAND INTL	4,909	87.0	9
MSP MINNEAPOLIS-ST. PAUL INTL	10,593	86.9	10
SEA SEATTLE-TACOMA INTL	11,002	86.9	11
SAN SAN DIEGO LINDBERGH FIELD	6,437	86.4	12
STL ST. LOUIS LAMBERT INTL	4,569	86.2	13
CLT CHARLOTTE DOUGLAS	9,181	86.0	14
CVG CINCINNATI NORTHERN INT. KY	1,093	86.0	15
IAD WASHINGTON DULLES	2,892	86.0	16
LAS LAS VEGAS MCCARRAN INTL	12,581	85.0	17
DFW DALLAS-FT. WORTH REGIONAL	16,086	84.5	18
ORD CHICAGO O HARE	20,398	83.2	19
TPA TAMPA INTL	4,625	83.1	20
DCA RONALD REAGAN NATIONAL	6,396	82.1	21
SFO SAN FRANCISCO INTL	14,434	82.1	22
MIA MIAMI INTL	5,106	81.8	23
FLL FT. LAUDERDALE	5,633	81.5	24
JFK NEW YORK JFK INTL	7,663	81.5	25
MCO ORLANDO INTL	8,819	81.4	26
PHL PHILADELPHIA INTL	5,897	81.3	27
LAX LOS ANGELES INTL	17,528	80.4	28
EWR NEWARK LIBERTY INTERNATIONAL	9,724	78.3	29
LGA NEW YORK LAGUARDIA	8,153	77.3	30
BOS BOSTON LOGAN INTL	10,083	75.3	31
AVERAGES	10,049	84.57	

DEPARTURES

Airport	Flights	% On Time	Rank
SLC SALT LAKE CITY INTL	8,866	91.8	1
SEA SEATTLE-TACOMA INTL	10,997	89.7	2
DTW DETROIT METRO WAYNE CNTY	10,211	89.6	3
PDX PORTLAND INTERNATIONAL	4,913	89.5	4
PHX PHOENIX SKY HARBOR INTL	11,963	89.5	5
MSP MINNEAPOLIS-ST. PAUL INTL	10,600	88.7	6
ATL HARTSFIELD-JACKSON ATLANTA INTL	31,503	88.0	7
IAH HOUSTON GEORGE BUSH	10,780	87.7	8
BWI BALTIMORE/WASHINGTON INTL	7,833	87.4	9
IAD WASHINGTON DULLES	2,899	87.4	10
CVG CINCINNATI NORTHERN INT. KY	1,093	86.7	11
MDW CHICAGO MIDWAY	7,279	86.3	12
STL ST. LOUIS LAMBERT INTL	4,569	86.2	13
TPA TAMPA INTERNATIONAL	4,627	86.1	14
DCA RONALD REAGAN NATIONAL	6,395	86.0	15
SAN SAN DIEGO LINDBERGH FIELD	6,433	85.8	16
CLT CHARLOTTE DOUGLAS	9,183	85.5	17
DEN DENVER INTERNATIONAL	19,268	85.4	18
LAS LAS VEGAS MCCARRAN INTL	12,575	84.8	19
DFW DALLAS-FT. WORTH REGIONAL	16,089	84.7	20
SFO SAN FRANCISCO INTL	14,425	84.4	21
JFK NEW YORK JFK INTL	7,666	83.4	22
PHL PHILADELPHIA INTL	5,904	83.3	23
LGA NEW YORK LAGUARDIA	8,156	82.6	24
ORD CHICAGO O HARE	20,406	82.3	25
BOS BOSTON LOGAN INTERNATIONAL	10,084	81.9	26
FLL FT. LAUDERDALE	5,630	81.7	27
MCO ORLANDO INTL	8,824	81.7	28
MIA MIAMI INTL	5,107	81.4	29
LAX LOS ANGELES INTL	17,527	81.1	30
EWR NEWARK LIBERTY INTERNATIONAL	9,730	80.7	31
AVERAGES	10,050	85.53	

ON TIME ARRIVAL PERFORMANCE AT SLC

By Carrier

Air Carrier	Flights	% On Time
AS ALASKA	210	94.8%
OO SKYWEST	3,863	93.2%
DL DELTA	3,248	90.9%
AA AMERICAN	340	85.0%
WN SOUTHWEST	811	85.0%
UA UNITED	110	80.0%
B6 JETBLUE	140	75.7%
F9 FRONTIER	145	66.2%
AVERAGES	8,867	90.5%

Source: DOT Air Travel Consumer Report

DESIGN AND CONSTRUCTION REPORT

TABLE OF CONTENTS

- I. Area Map of Project Locations
- II. Project Schedule
- III. Construction Analysis
- IV. Design and Construction Report



Salt Lake City
International Airport

2016 - 2017 Project Legend

Airfield

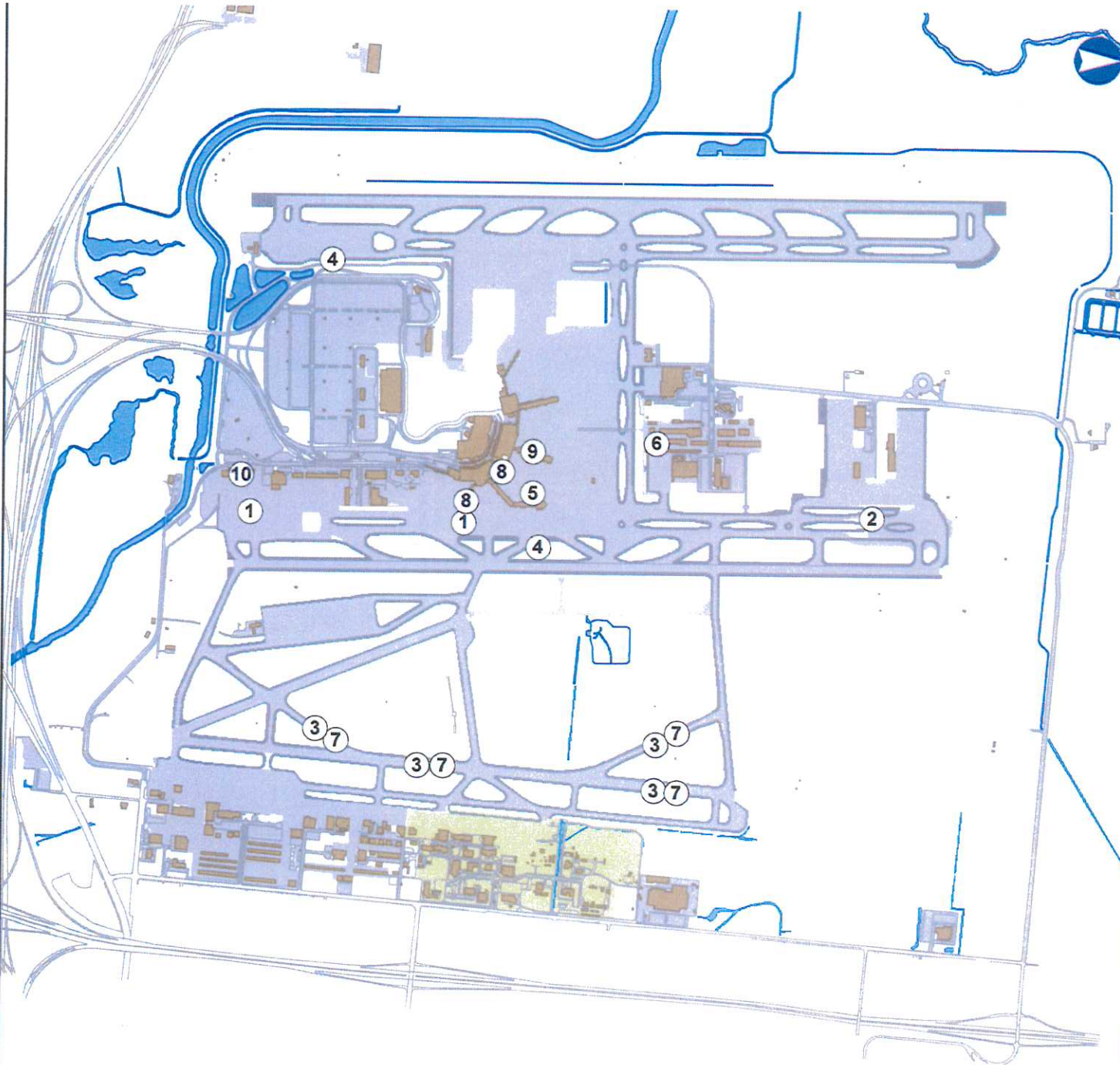
1. Deicing Pad 34R
2. Deicing Pad R/W 16L
3. R/W 17-35 and T/W P & R Pavement Rehabilitation
4. R/W 34L & 34R Glycol Pump Station Diversion Valves
5. PCC Joint Seal Phase 2
6. Car Wash Rebuild
7. Airfield Lighting Wiring Rehabilitation Phase 1

Terminal

8. Roof Replacements (Terminal Area)
9. Restroom Renovation C133 & C134

Landside

10. Airport Operations Center



SALT LAKE CITY INTERNATIONAL AIRPORT
CONSTRUCTION PROGRAM
2016/2017 Construction Schedule

ID	Task Name	Start	Finish	2016											
				Oct '16	Nov '16	Dec '16	Jan '17	Feb '17	Mar '17	Apr '17	May '17	Jun '17	Jul '17	Aug '17	
1	Airfield	Thu 10/18/12	Wed 12/28/16	[Gantt bar from Oct '16 to Dec '16]											
2	(1) Deicing Pad 34R	Thu 10/18/12	Mon 8/29/16	[Gantt bar from Oct '16 to Nov '16]											
3	(2) Deicing Pad R/W 16L	Mon 10/6/14	Fri 11/25/16	[Gantt bar from Oct '16 to Nov '16]											
4	(3) R/W 17-35 & T/W's P & R Pavement Rehabilitation	Mon 8/1/16	Wed 11/9/16	[Gantt bar from Oct '16 to Nov '16]											
5	(4) R/W 34L & 34R Glycol Diversion Valves	Wed 6/1/16	Mon 10/31/16	[Gantt bar from Oct '16 to Nov '16]											
6	(5) Concourse B PCC Joint Seal & Repair Phase 2	Mon 8/29/16	Tue 11/1/16	[Gantt bar from Oct '16 to Nov '16]											
7	(6) Car Wash Rebuild	Tue 10/4/16	Wed 12/28/16	[Gantt bar from Oct '16 to Dec '16]											
8	(7) Airfield Lighting Wiring Rehabilitation - Phase 1	Tue 9/6/16	Sat 11/26/16	[Gantt bar from Oct '16 to Nov '16]											
9	Terminal	Tue 8/30/16	Wed 1/25/17	[Gantt bar from Oct '16 to Dec '16]											
10	(8) Roof Replacements (Terminal Area)	Tue 8/30/16	Mon 11/7/16	[Gantt bar from Oct '16 to Nov '16]											
11	(9) Restroom Renovation C133 & C134	Wed 10/19/16	Wed 1/25/17	[Gantt bar from Oct '16 to Dec '16]											
12	Landside	Wed 6/1/16	Tue 8/1/17	[Gantt bar from Oct '16 to Dec '16]											
13	(10) Airport Operations Center	Wed 6/1/16	Tue 8/1/17	[Gantt bar from Oct '16 to Dec '16]											
14	South Valley Regional Airport	Mon 3/20/17	Fri 6/9/17	[Gantt bar from Mar '17 to Jun '17]											
15	(11) SVRA R/W 16-34 & T/W A Pavement Rehabilitation	Mon 3/20/17	Fri 6/9/17	[Gantt bar from Mar '17 to Jun '17]											

Date: Wed 11/2/16

Design	DESIGN		Inactive Milestone		Manual Summary	
Construction	CONSTRUCTION		Inactive Summary		Start-only	
	SCOPING		Manual Task		Finish-only	
	SUMMARY		Duration-only		Deadline	
	Inactive Task		Manual Summary Rollup			

SALT LAKE CITY DEPARTMENT OF AIRPORTS
CONSTRUCTION PROJECT STATUS 2016 - 2017

#	PROJECT NAME	ENGINEER'S ESTIMATE	BID AMOUNT	APPROVED CHANGE ORDERS TO DATE	% OF COST INCREASE TO DATE	STATUS	CONTRACTOR
CONSTRUCTION							
1	Deicing Pad 34R	\$ 32,636,278	\$ 30,713,449	\$ 1,839,542	5.99%	sub. comp.	Wadsworth Brothers Const.
2	Deicing Pad R/W 16L	\$ 27,398,981	\$ 29,645,774	\$ 12,652	0.04%	on schedule	Granite Construction
3	R/W 17-35 & T/W's P & R Pavement Rehabilitation	\$ 11,525,000	\$ 9,871,843	\$ 16,872	0.17%	on schedule	Staker Parsons Company
4	R/W 34L & 34R Glycol Diversion Valves	\$ 522,671	\$ 708,056			on schedule	VanCon, Inc.
5	Concourse B PCC Joint Seal & Repair Phase 2	\$ 383,848	\$ 339,225			complete	Granite Construction
6	Car Wash Rebuild	\$ 357,000	\$ 486,588			on schedule	Paulsen Construction
7	Airfield Lighting Wiring Rehabilitation Phase 1	\$ 592,358	\$ 478,074			on schedule	Royal Electric Company
8	Roof Replacements (Terminal Area)	\$ 249,000	\$ 295,000	\$ 1,945	0.66%	on schedule	Conwest, Inc.
9	Restroom Renovations C133 & C134	\$ 276,829	\$ 268,800			on schedule	AIS Mechanical, Inc.
10	Airport Operations Center	\$ 15,000,000	\$ 16,515,000	\$ 296,159	1.79%	on schedule	Big D Construciton
	Sub Total	\$ 88,941,965	\$ 89,321,809	\$ 2,167,170	2.43%		
DESIGN/BID/AWARD							
11	SVRA R/W 16-34 & T/W A Pavement Rehabilitation	\$ 3,381,136	\$ 2,946,149			award	Geneva Rock Products
	Sub Total	\$ 3,381,136	\$ 2,946,149				
	Total	\$ 92,323,101	\$ 92,267,958				
Budget amount, Engineer's estimate, and Bid amount is based on construction cost only.							

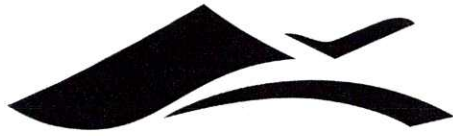
DESIGN AND CONSTRUCTION REPORT

DESIGN/BID/AWARD

- (11) **SVRA R/W 16-34 & T/W A Pavement Rehabilitation** - The apparent low bidder for this project is Geneva Rock Products. Contract documents are currently being executed. Construction for this project will begin in the Spring of 2017.

CONSTRUCTION

- (1) **Deicing Pad 34R** - The Contractor is currently working on punch list items and warranty work.
- (2) **Deicing Pad R/W 16L** - The Contractor is continuing to work on Phase 3 of the project, T/W H and H12. Placement of PCC pavement is now complete as well as work to construct the shoulders. Grading of the infields and cleaning of the jobsite is currently taking place. The electrical sub-contractor is on-site installing in-pavement light bases.
- (3) **Runway 17-35 and Taxiways P & R Pavement Rehabilitation** - The Contractor has placed new asphalt on R/W 17-35 and T/W's K1, K4 through K9, N, P and R up to the hold short lines. R/W 17-35 is temporarily closed to complete pavement surface grooving on all full strength runway and taxiway pavement surfaces and install runway and taxiway light fixtures.
- (4) **Runway 34L & 34R Glycol Diversion Valves** - The Contractor has completed installing the vaults and is currently back filling and working on electrical components on the project.
- (5) **Concourse B PCC Joint Seal and Repair Phase 2** - Substantial completion for this project was issued on November 1, 2016. The Contractor is currently working on punch list items.
- (6) **Car Wash Rebuild** - Demolition for this project is scheduled to begin on November 7, 2016. The new car wash equipment is anticipated to be on site November 22, 2016.
- (7) **Airfield Lighting Wiring Rehabilitation - Phase 1** - A notice to proceed was issued to the Contractor on September 6, 2016. Installation of new wire for the airfield lighting system on Runway 14-32 and Taxiway K is currently taking place.
- (8) **Roof Replacements (Terminal Area)** - Construction for this project is on-going and approximately 95% complete.
- (9) **Restroom Renovation C133 & C134** - The Contractor is currently preparing submittals for review by SLCDA. Demolition for this project will begin on November 28, 2016.
- (10) **Airport Operations Center** - The Overhead fire sprinklers and mechanical ductwork is on-going. The Contractor is installing metal stud walls. Electrical rough-in work and the new roof installation has started.



Salt Lake City
Department of Airports

**December 2016
Media Clippings**

Advisory Board Meeting

<https://www.slairport.com/assets/pdfDocuments/MediaPacketDec2016.pdf>