

DEPARTMENT OF AIRPORTS
BOARD MEETING

25 May 2016

AGENDA



Salt Lake City
Department of Airports

**SALT LAKE CITY DEPARTMENT OF AIRPORTS
BOARD MEETING AGENDA**

25 May 2016
8:00 A.M.

CONSENT AGENDA

- A. Minutes of the 27 April 2016 Meeting

DISCUSSION ITEMS

- B. Director's Report – Maureen Riley, Executive Director, SLCDA
- C. Terminal Redevelopment Program (TRP) Update – Mike Williams, TRP Director, SLCDA
- D. North Concourse Program – Kevin Robins, Engineering Director, SLCDA

INFORMATION ITEMS

- A. Financial Report – March 2016
- B. Air Traffic Statistics – March 2016
- C. Comparison of On-Time Operations – March 2016
- D. Construction Report – April 2016
- E. Media Clippings – May 2016

The next meeting will be held on **Wednesday, June 15, 2016**, at 8:00 a.m. Meetings are held in the Board Room located on the third level of the short-term parking garage. People with disabilities may make requests for reasonable accommodations no later than 48 hours in advance in order to attend this Airport Board Meeting. Accommodations may include alternate formats, interpreters, and other auxiliary aids. This is an accessible facility. For questions or additional information, please contact LuJean Christensen at 801-575-2096.

DEPARTMENT OF AIRPORTS
BOARD MEETING

25 May 2016

MINUTES

SALT LAKE CITY DEPARTMENT OF AIRPORTS MINUTES OF ADVISORY BOARD MEETING

27 April 2016

Members Present: Igor Best-Devereux - Chair
Robert Bergman
Christine Botosan
Mickey Gallivan
Senator Karen Mayne
Larry Pinnock

Excused: J.T. Martin

City Council Office: James Rogers

Department of Airports: Maureen Riley, Executive Director
Kristen Elder, Management Analyst
Brady Fredrickson, Senior Planner
Pete Higgins, Director of Operations
Cole Hobbs, Contracts and Procurement Manager
Marco Kunz, Attorney
Joel Nelson, Property and Real Estate Manager
Kevin Robins, Director of Engineering
Ryan Tesch, Director of Finance
Nancy Volmer, Director of Public Relations
Mike Williams, TRP Program Director

Chair Igor Best-Devereux called the meeting to order at 8:01 a.m. and welcomed Robert Bergman to the meeting, thanking him for his participation on the Board.

AGENDA

A. Minutes

The motion was made by Christine Botosan and seconded by Larry Pinnock to approve the minutes of March 23, 2016 as modified. All votes were affirmative; motion passed.

B. Director's Report

Maureen Riley, Executive Director, updated the Airport Advisory Board regarding current events.

- Riley reported that we have received positive media on the new London Heathrow flight and will continue to work closely with the tourism bureaus to promote the route.
- Riley gave an update on the status of the fixed based operator (FBO) at South Valley Regional Airport (SVR). As detailed in an e-mail sent to board members yesterday, the

Salt Lake City Department of Airports' (Airport) existing contract with the current FBO, Leading Edge Aviation, expires on May 16, 2016. Leading Edge was the only respondent to the Airport's Request for Proposals (RFP), and negotiations stalled last week over the amount and type of investment required in a new, 20-year contract. Leading Edge declined an offer to extend its existing contract for one year and intend to vacate on May 16th. The Airport is exploring its best options for an interim solution and have planned a meeting for the general aviation community on May 3rd. We've reached out to Atlantic Aviation and TAC Air about providing temporary services at SVR (TAC Air declined). If Atlantic declines, we will work with general aviation consultant Michael Hodges to obtain temporary services and resolicit an RFP. Riley added that the May 25, 2016 Board meeting will be devoted entirely to looking at general aviation issues as a system.

- Riley asked that all inquiries regarding active RFPs be directed to Airport Procurement Manager Cole Hobbs. City ordinance prohibits discussion of activities relating to an active RFP. The Board will be advised when a new RFP issued for FBO services at SVR. Three additional RFPs relating to the issuance of debt for the Terminal Redevelopment Program are currently active: disclosure counsel, trustee, and bond underwriters. Because there has been a lot of interest in all three of these active RFPs, please refer inquiries to Hobbs.
- Riley updated the Board on the proposed Fiscal Year 2017 budget. The Airport's budget was presented to City Council on April 12th. Although there were a modest number of questions, there were no changes made at that time. Full adoption of the budget is expected in late June.

Pinnock asked if there had been any discussion about whether Leading Edge Aviation could take on a capital partner for the capital improvements requested in a new contract. Riley stated that the Airport would like to see additional T-hangars and shade hangars constructed so hangar lease payments may be raised to fair market value. Leading Edge wanted to build corporate hangars. Riley emphasized that the Airport believes Leading Edge has been a professional and accomplished provider of FBO services and we have had no concerns with their performance.

C. Terminal Redevelopment Program Update

Mike Williams, Terminal Redevelopment Program (TRP) Director, presented an update on the TRP (presentation on file). Main points included were:

- A permanent Certificate of Occupancy for the Quick Turn-Around facility (QTA) and Rental Service Sites (RSS) has been received.
- Feedback from the tenants of these facilities has been positive.
- Close-out of individual trade contracts will continue into June.
- Environmental clean-up of existing rental car buildings is complete.
- Demolition of existing rental car buildings began this week. Tenants who left items behind (e.g. tires and tanks with unknown fluids) are being invoiced for the additional clean-up costs.
- Excavation of the underground fuel tanks is underway and is expected to be complete within a couple of weeks.
- The critical fuel line tie-in work at Gate D2 was completed on schedule.

- Utility work on the new terminal exit bypass road is taking place and the road will be paved and operational by the end of May. Because this work requires consecutive single lane closures, Public Relations Director Nancy Volmer will work with the media to notify the public.
- All bids for foundation and structural elements of the terminal, gateway, and western portion of the South Concourse have been received.
- Utility work has begun in the new park and wait lot, which will open later this year.
- A parking lot on the north end of Wright Brothers Drive is being planned for the 1,500-1,800 trade workers anticipated at the peak of construction. It is common practice for construction firms to bus their workers from a remote lot to the construction site.
- Temporary walls have been constructed in the E Concourse hold room in preparation for partial demolition of that room.
- Apron pavement crushing operations west of the E Concourse are underway. Pavement will be stockpiled and reused where possible throughout the project. The south leg of the E Concourse will be demolished later this year.

Senator Mayne asked if the project follows local and federal procurement guidelines. Williams answered in the affirmative. Williams noted that only a few areas of the project had the potential for federal funding, such as the apron and a very limited area of the baggage system.

Mayne also asked if a preference is given to hiring Utah firms and workers. Williams explained that while the bids are structured around the lowest responsible bidder, a goal of the project is to maximize the opportunity for local contractors and consultants. Through hosting frequent outreach sessions, we are working with local contractors who can't prequalify on their own to become qualified through HD as a subprime. Of the \$127M spent on work completed to date, \$124M went to Utah-based companies.

Riley asked Airport Attorney Marco Kunz to comment on federal considerations for offering preferences to local companies. Kunz noted that the federal guidelines on this topic are very complex and that our outreach programs to partner local firms with other contractors have been very effective. Riley added that the City does not have a specific, targeted local participation requirement.

Pinnock asked about the long-term use of that trade contractor parking lot when construction is completed. Williams stated that the lot would most likely be reclaimed.

D. Terminal Redevelopment Program Budget and Plan of Finance

Ryan Tesch, Finance Director, gave a presentation on the TRP Plan of Finance to the Board (presentation on file). Main points included were:

- Passenger data highlights strong growth trends over past 27 consecutive months.
- Review of the funding plan for the TRP and capital improvements over the next 10 years.
- Detailed review of the budget for various elements of the project and dollar amounts spent or committed to date.

- Summary of the TRP bond plan of finance, timing of bond issues, and assumed interest rates.
- Review of funding and financial forecasts. Conservative figures were used in all models, especially the number of enplaned passengers
- Comparison of the Cost Per Enplanement (CPE) at SLC to other airports.

Riley noted that the current bond rate is 4%, which provides an incentive to go to market sooner for significant savings with the first bond issue.

Botosan asked if the bonds will be tax-advantaged to the investor. Riley answered in the affirmative.

Botosan inquired what the debt service was on \$1B of bonds and how that will affect our long-term cash projections. Riley explained that the debt service has not yet been officially structured, but can be designed to accomplish whatever targeted goals we want to achieve. This includes delaying payment of the principal in order to match revenue realization with the payment of the debt. Riley added that we have been ultra-conservative on the assumptions used in our financial models, which make forecasts through the year 2030.

Gallivan wondered if there has been any additional conversations about the North Concourse. Riley noted that we are still in conversation with the airlines.

E. Transportation Security Administration Overview

Ronald Malin, Federal Security Director for Utah, Transportation Security Administration (TSA), presented a brief overview of the TSA procedures and checkpoint anomalies.

Malin displayed a representative sample of prohibited items collected on a daily basis at the SLC security checkpoints. He further explained that the items are not illegal to own, but are prohibited in the sterile area. When a prohibited item is found or suspected, the bag must be searched and the issue resolved, which may cause delays at the checkpoint. This is also true for toys and other souvenirs which appear to be weapons when viewed through the x-ray machine.

Malin reported that 24 guns have been found in checked bags so far in 2016, the majority of which were loaded and owned by concealed firearm permit holders who forgot the gun with was in their bag. Last week, 73 guns were found by TSA at airports nationwide. Malin works closely with State Representative Curtis Oda and the Bureau Criminal Identification Division of the Utah Department of Public Safety to educate the public and concealed firearm permit holders.

Pinnock asked what process occurs when a loaded gun is found at the checkpoint. Malin explained that if the weapon is detected at the checkpoint, the x-ray operator activates an alarm which alerts Airport Police. A police officer will respond, render the item safe, then process the passenger on a criminal basis pursuant to local laws. TSA civil penalties may be as high \$11,000, although civil cases typically settle in court for \$3,500 to \$4,000 for a first offense.

Best-Devereux asked if signs for prohibited items are displayed at the checkpoint. Malin answered in the affirmative, further explaining that many passengers report that they saw a sign, but did not think they had a gun in their bag.

Best-Devereux asked if prohibited items are found in the PreCheck lane. Malin answered in the affirmative. Riley stated that if a PreCheck passenger is found to have a weapon at the checkpoint, that individual is permanently excluded from the PreCheck program.

Best-Devereux asked why the displayed power drill is a prohibited item. Malin explained that tools larger than 4" are prohibited, and added the airlines have the right to refuse any item on board an aircraft, even if it is not on the TSA prohibited items list.

Gallivan asked if the displayed hand grenades were the same items used during the previous Board presentation. Ron stated that with one exception, they were new items.

Best-Devereux thanked Botosan for her service on the Board and presented her with a parting gift. Botosan remarked that she would miss serving on the Board and wished the group well.

The next Board meeting will be held the 25 May 2016.

Igor Best-Devereux adjourned the meeting at 9:11 a.m.

Igor Best-Devereux, Chair

Date

Jacqueline M. Biskupski, Mayor

Date

DEPARTMENT OF AIRPORTS
BOARD MEETING

25 May 2016

DISCUSSION ITEMS

SALT LAKE CITY AIRPORT BOARD

AGENDA: DISCUSSION ITEM (B)
DATE: 25 May 2016
TO: Airport Board
FROM: Maureen Riley, Executive Director
SUBJECT: **Executive Director's Report**

Maureen Riley will present a monthly informational report to the Board, including:

1. TRP progress
2. Ground transportation update

Other discussion items may include:

1. Concessions and rental cars
2. Airport safety and security
3. Airport facilities and operations
4. General aviation
5. Passenger and airport users
6. Environmental matters
7. Financial condition
8. Legislative issues
9. Airlines
10. Communications and marketing

SALT LAKE CITY AIRPORT BOARD

AGENDA: DISCUSSION ITEM (C)
DATE: 25 May 2016
TO: Airport Board
FROM: Maureen Riley, Executive Director
SUBJECT: **Terminal Redevelopment Program Update**

Mike Williams, Terminal Redevelopment Program (TRP) Director, will present an update on the SLC Terminal Redevelopment Program (presentation on file).

SLC Terminal Redevelopment Program



Current Activities and Progress

Rental Car Facilities – QTA and RSS

- Completing punch list items and contract close-out activities.
- Target Completion of Close-out activities June 2016

CGMP# 4 – Landside and Airside Enabling

- Demo of all Existing Rental Car Buildings Complete
- In the process of removing underground fuel storage tanks
- Several of the Existing Rental Car Sites will require contaminated soil environmental clean-up
- Partial Demolition of Concourse ‘E’ Holdroom area underway
- Terminal Exit Detour Roadway completed and in operation

Procurement

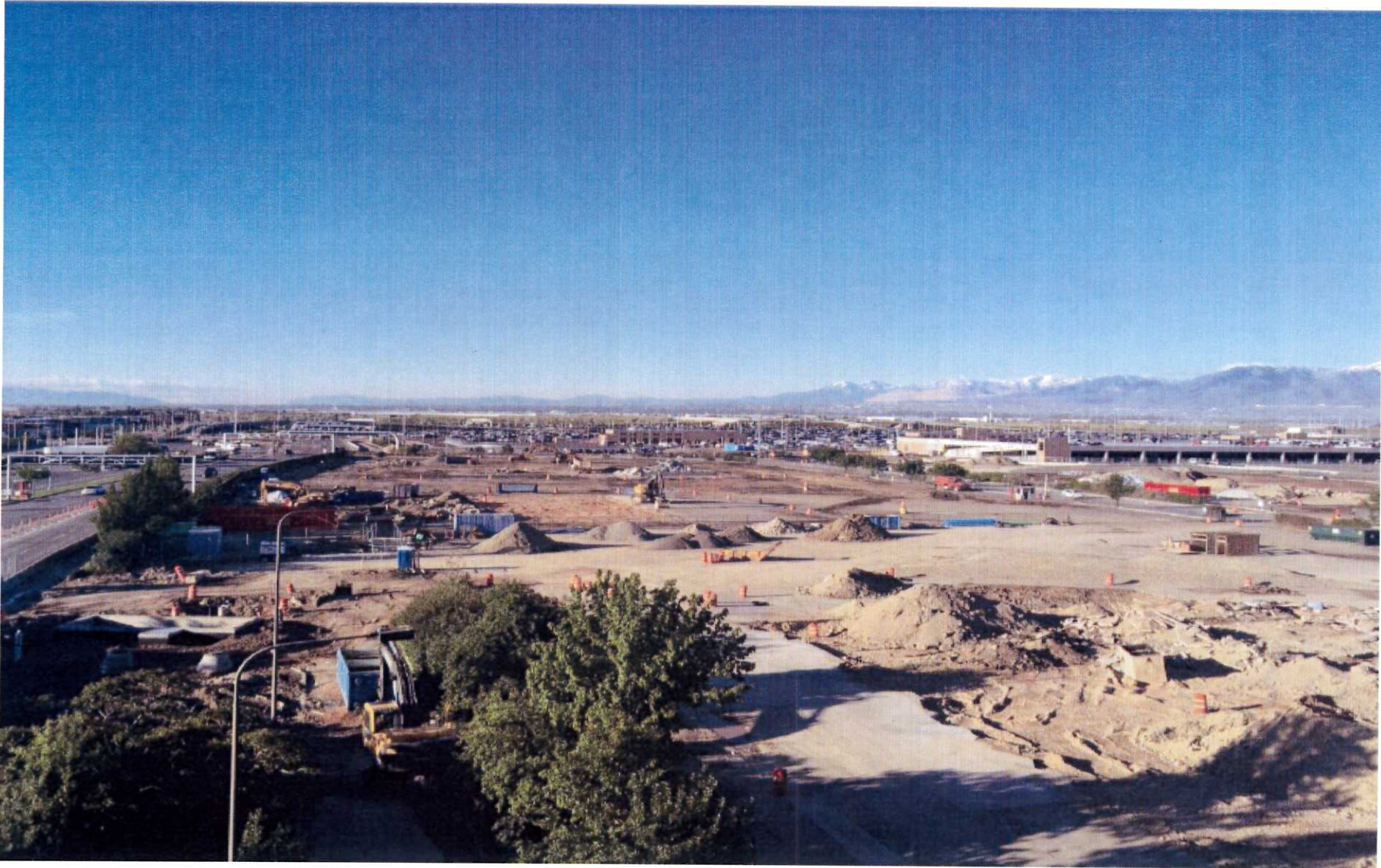
- Design Package 4/8 – Terminal/Gateway/South Concourse West bids received and analysis underway
- Package 6 – Baggage Handling System bids received and analysis underway
- Approximate value of scopes of work in procurement phase \$750 million to be awarded late summer

Design

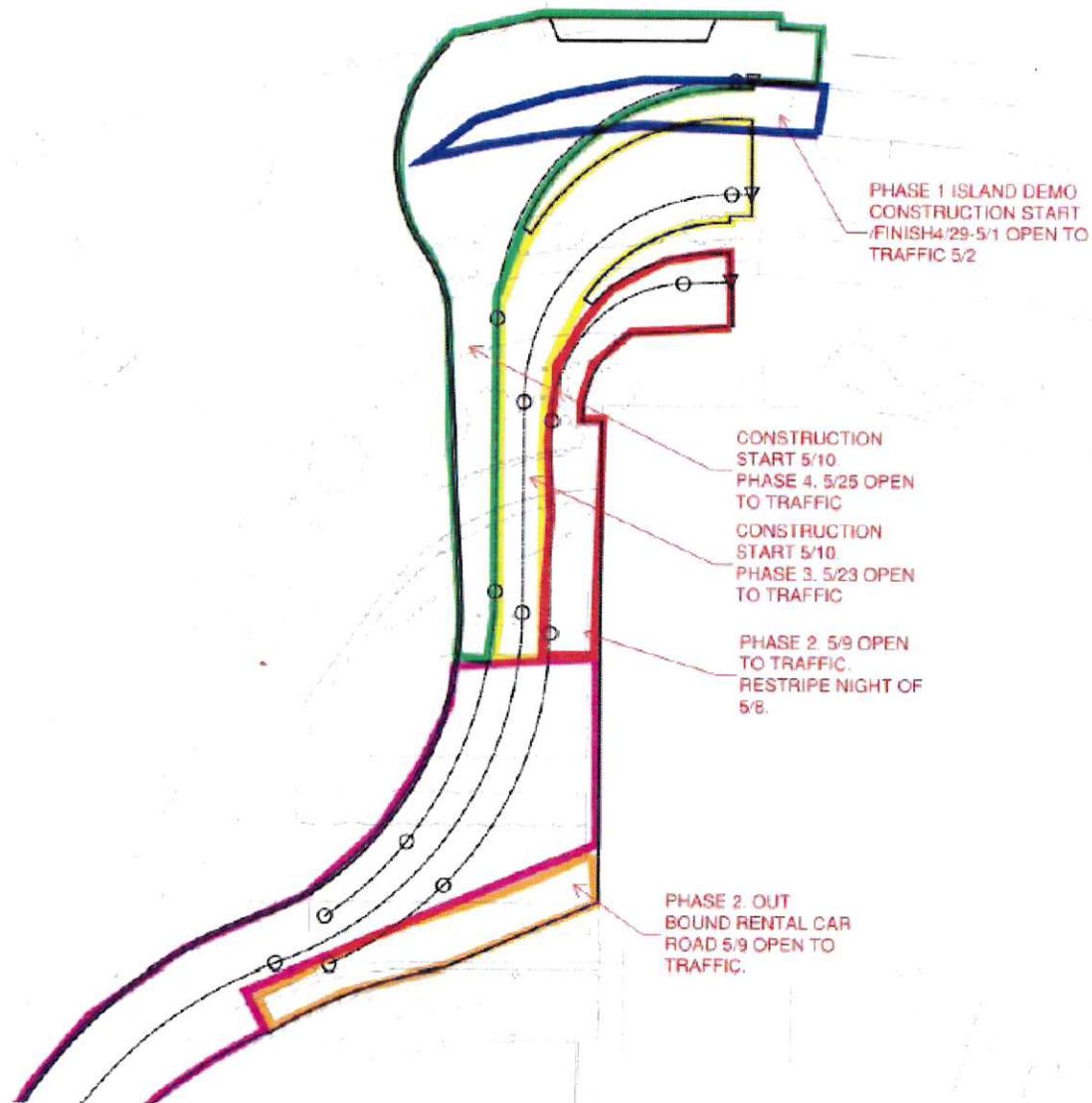
- Majority of Design on track to complete by mid-2016
- Public Millwork such as Airline Ticket Counters, Gates Counters and Rental Car Counters will be issued later this summer



Capture Rental Car Site Demo



Terminal Exit Roadway Detour



Terminal Exit Roadway Detour



Terminal Exit Detour Roadway



Pavement Demo and Utility Work for South Concourse West



**Salt Lake City International Airport
Terminal Redevelopment Program**

April 25, 2016

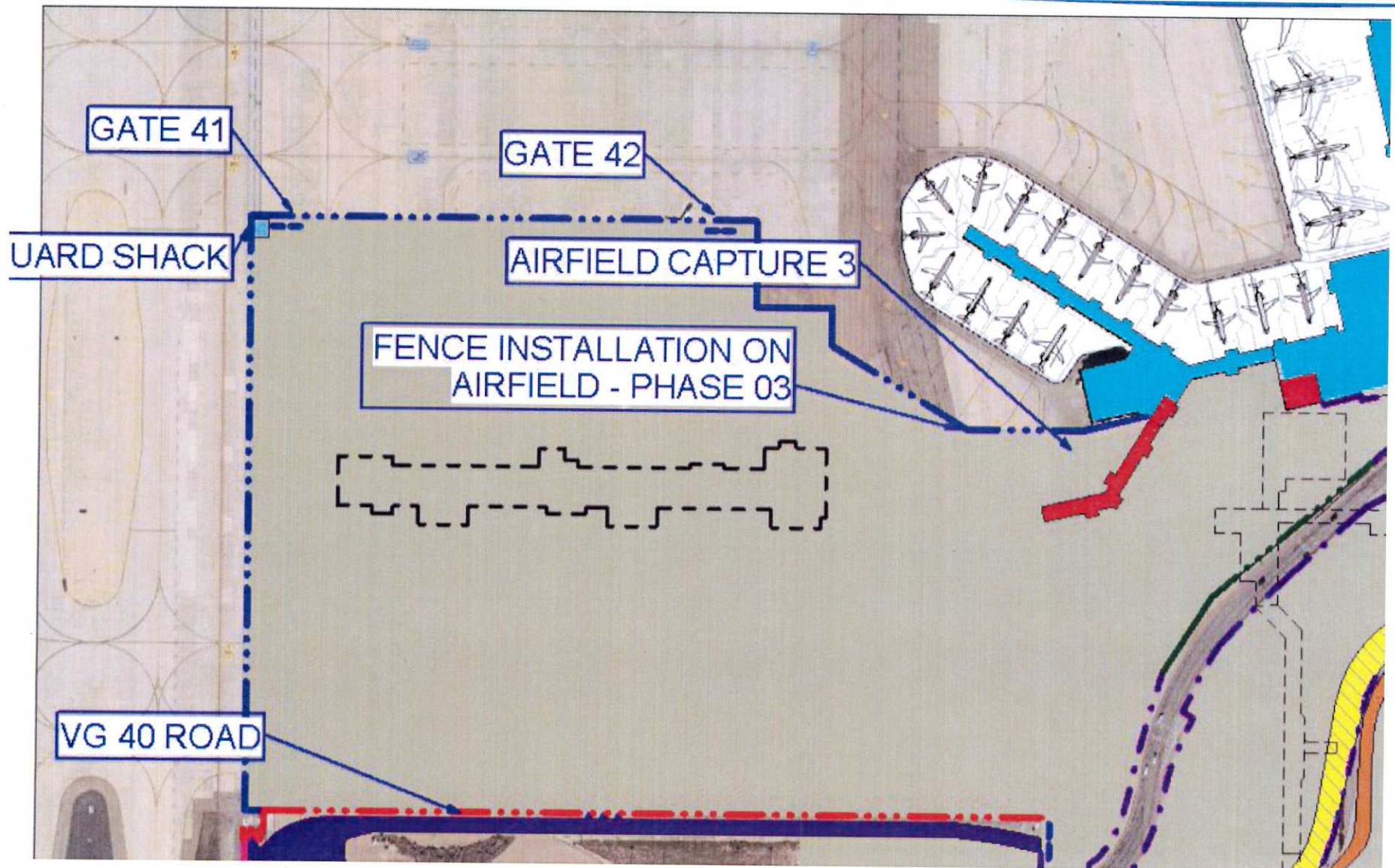


Salt Lake City International Airport

7



South Concourse West and Terminal Deep Excavation



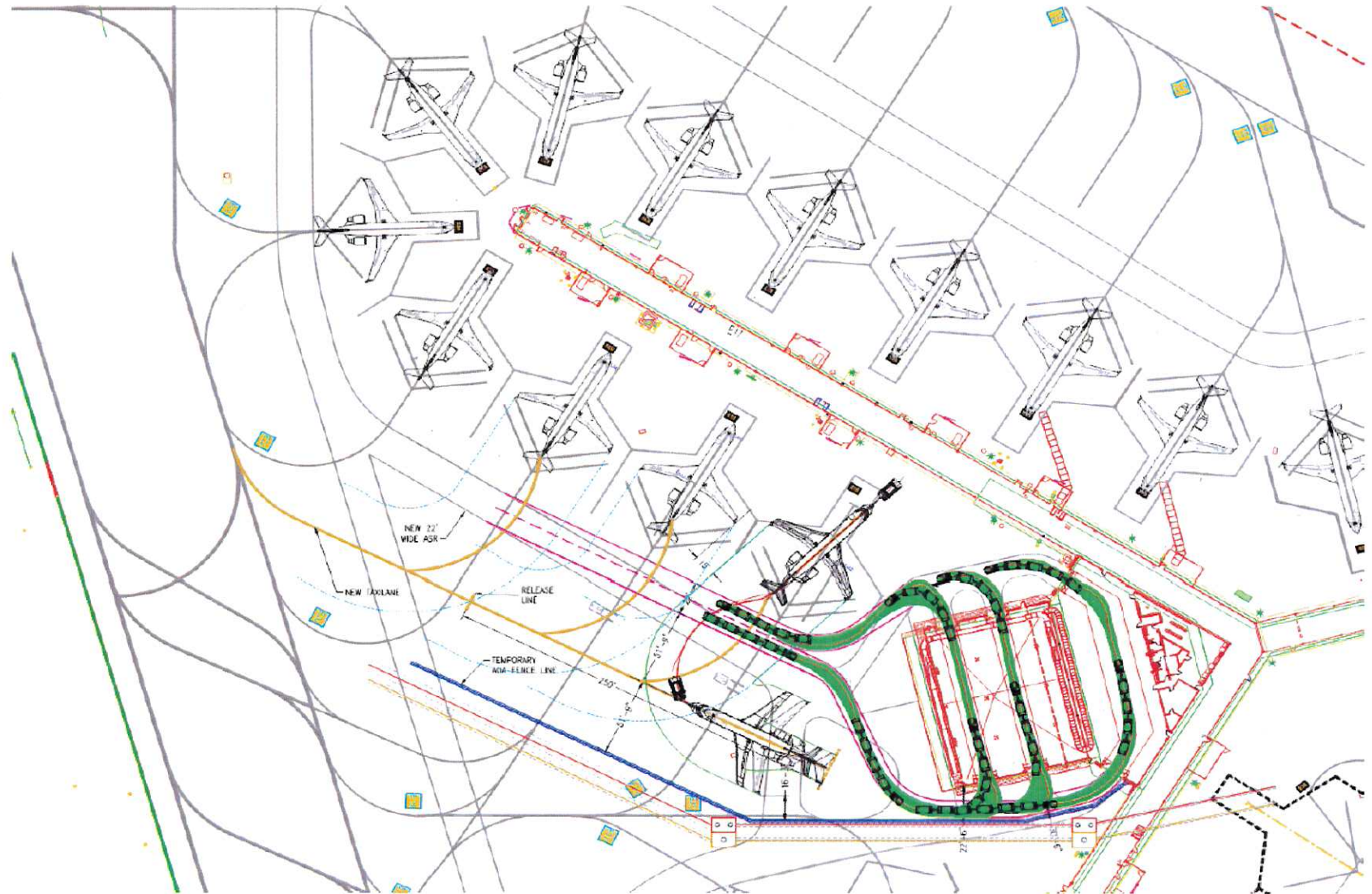
Concourse 'E' South Wing



**Salt Lake City International Airport
Terminal Redevelopment Program**

April 25, 2016

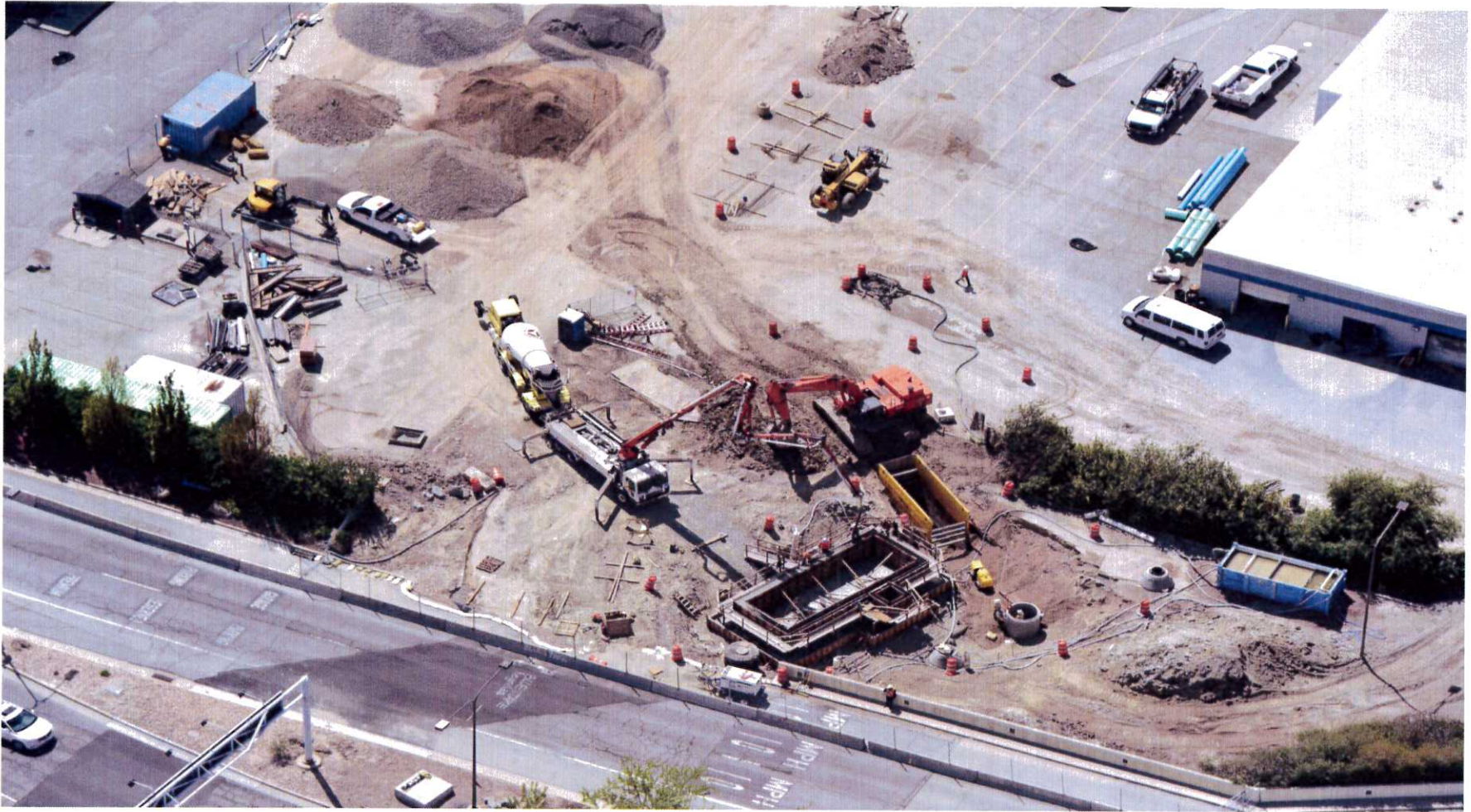
Planning for Concourse 'E' South Wing Demo



West Ductbank Installation



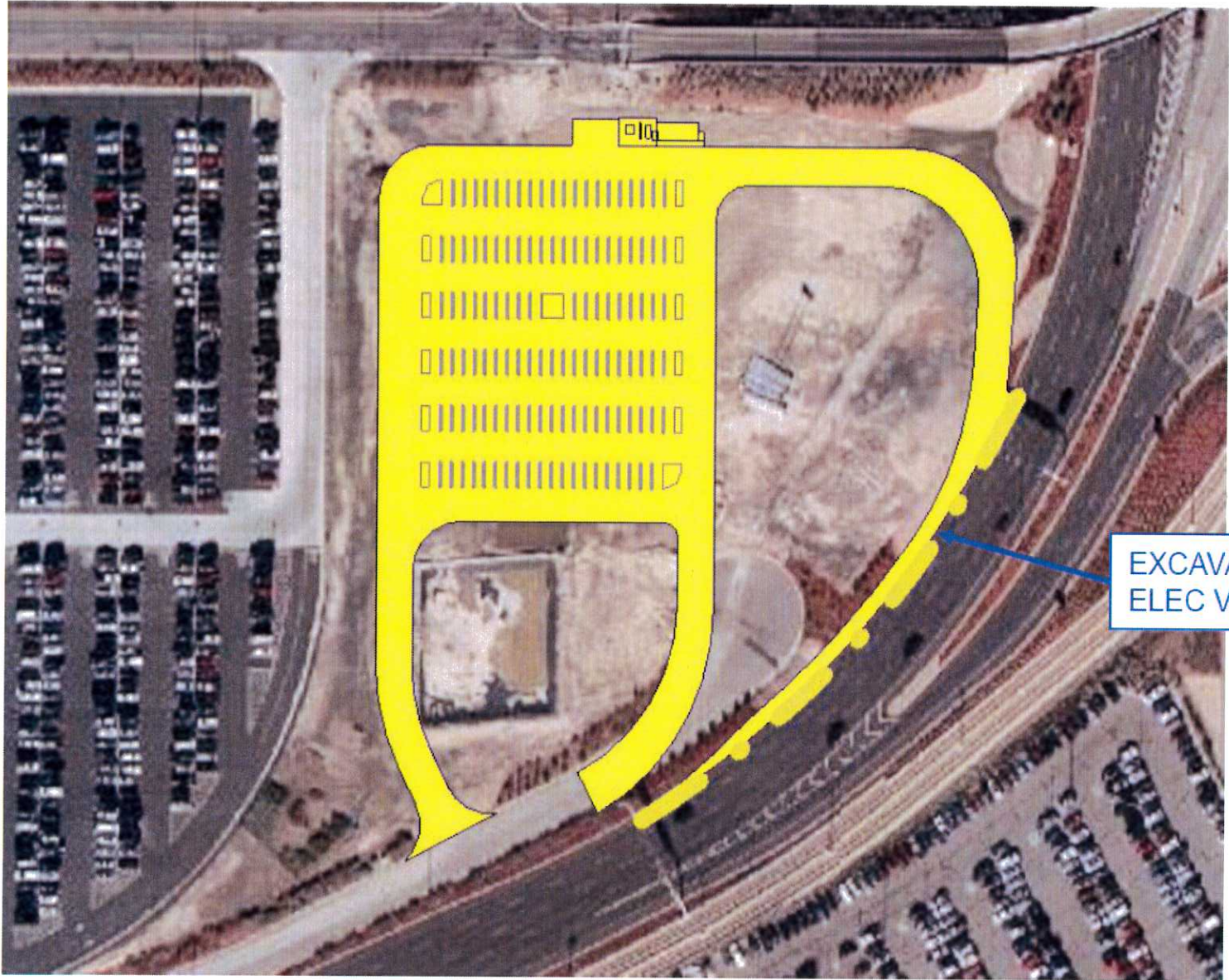
East Lift Station Near Parking Garage Entrance



**Salt Lake City International Airport
Terminal Redevelopment Program**

April 25, 2016

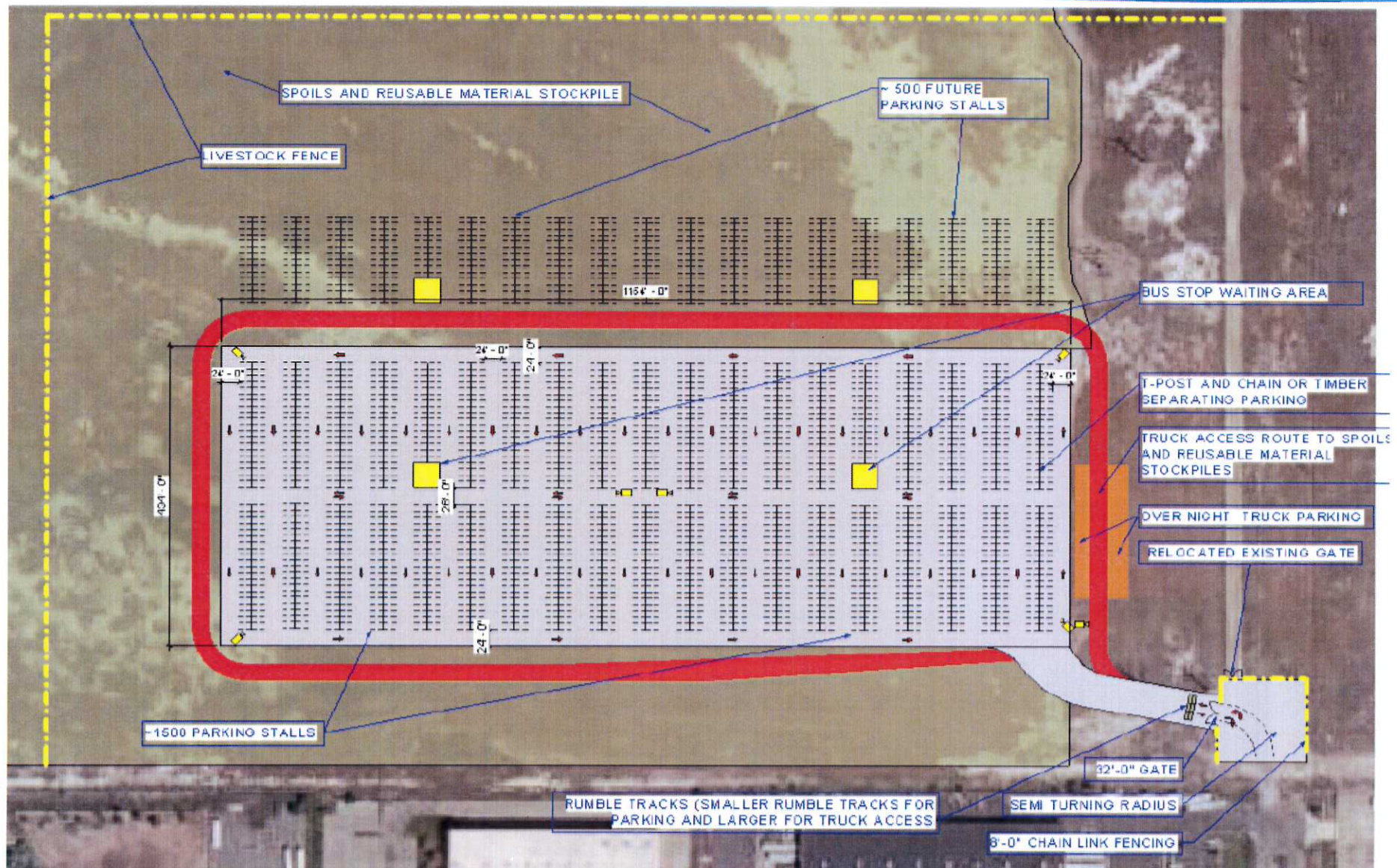
Park and Wait Lot Construction Area



EXCAVATE TO REMOVE
ELEC VAULT



Wright Brothers Drive Trade Parking Lot Planning

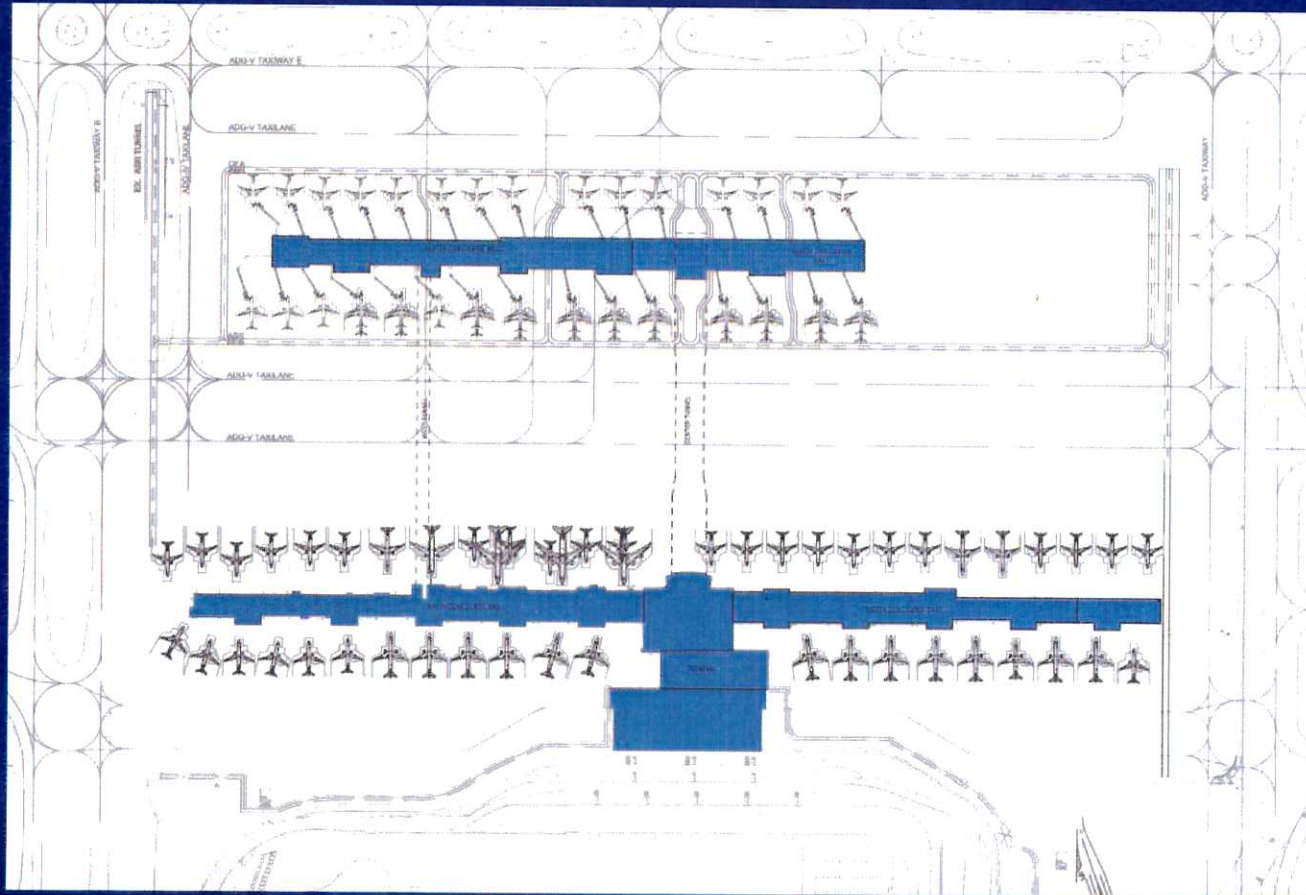


SALT LAKE CITY AIRPORT BOARD

AGENDA: DISCUSSION ITEM (D)
DATE: 25 May 2016
TO: Airport Board
FROM: Maureen Riley, Executive Director
SUBJECT: **North Concourse Program**

Kevin Robins, Engineering Director, will present to the Board Members a briefing on the North Concourse Program.

North Concourse Program



May 25, 2016

Background - North Concourse Program

- **Strong PAX growth** - Increase of 2 million PAX over last 24 months (10%)
- **No vacant gates at SLC** – Airlines use more gates than leased
- **Terminal redevelopment underway** – Fewer gates upon completion
- **Renovation of Cce B, C, D as an option** – Begins in year 2025
- **North Concourse option** – Creates additional gate capacity
- **Conceptual analysis complete** - Identifies construction opportunity

Issues – North Concourse Program

■ **Renovation Cce B, C, D**

- Estimated cost of \$417 million vs. \$737 million for North Concourse
- Construction duration through 2028
- Hardstanding and bussing during renovation for 4.5 years

■ **Gate Count** (See appendix)

- 56 Mainline gates leased vs. 61 Mainline gates used
- TRP assumes current airline gates leased
- Preferential gate use – A5 & A7 (SLCDA gates) and B1 & B3 (Delta gates)
- Forecast demand should reflect actual use

■ **Common Use Strategy**

- North Concourse concept as full common use
- Greater flexibility for construction phasing, airline relocations, and future growth

Issues – North Concourse Program

- **Airline gate relocations**
 - Delta Air Lines has multiple moves
 - All other airlines move only once
- **Hardstanding**
 - Possible in the near future
 - Location to be determined
- **Construction Phasing**
 - Phase 1 builds 20 gates; Phase 2 builds 10 gates
 - Phase 1 opens simultaneous with South Concourse West and Terminal
 - Phase 2 complete in circa 2025



Alternatives – North Concourse Program

- **Renovation of Concourses B, C, D**
 - No new gate capacity; extended construction duration; airfield constraints
 - Estimated cost \$417 million, including bussing operation and apron
- **Build North Concourse**
 - Adds 30 gates; shorter construction phasing; removes airfield constraints
 - Estimated cost \$737 million
 - Modern airport facilities for all air carriers
 - Improved customer service for all PAX
- **Deny new air service**
 - No capacity results in limited competition
 - Contrary to long-term strategy
- **Do-nothing scenario**
 - Cost escalation; increased gate constraint and congestion

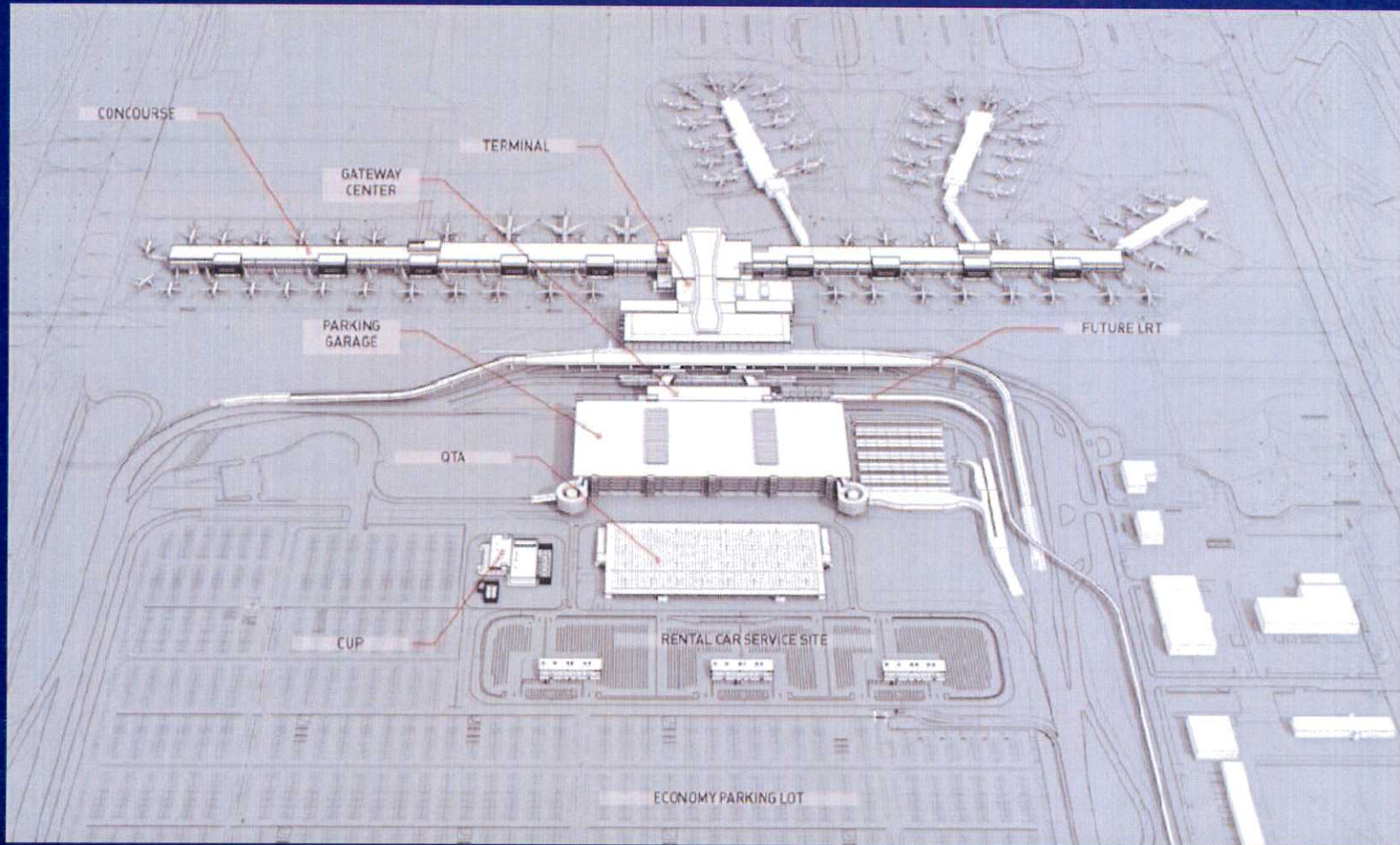


Fiscal Impact– Renovation vs. North Concourse Program

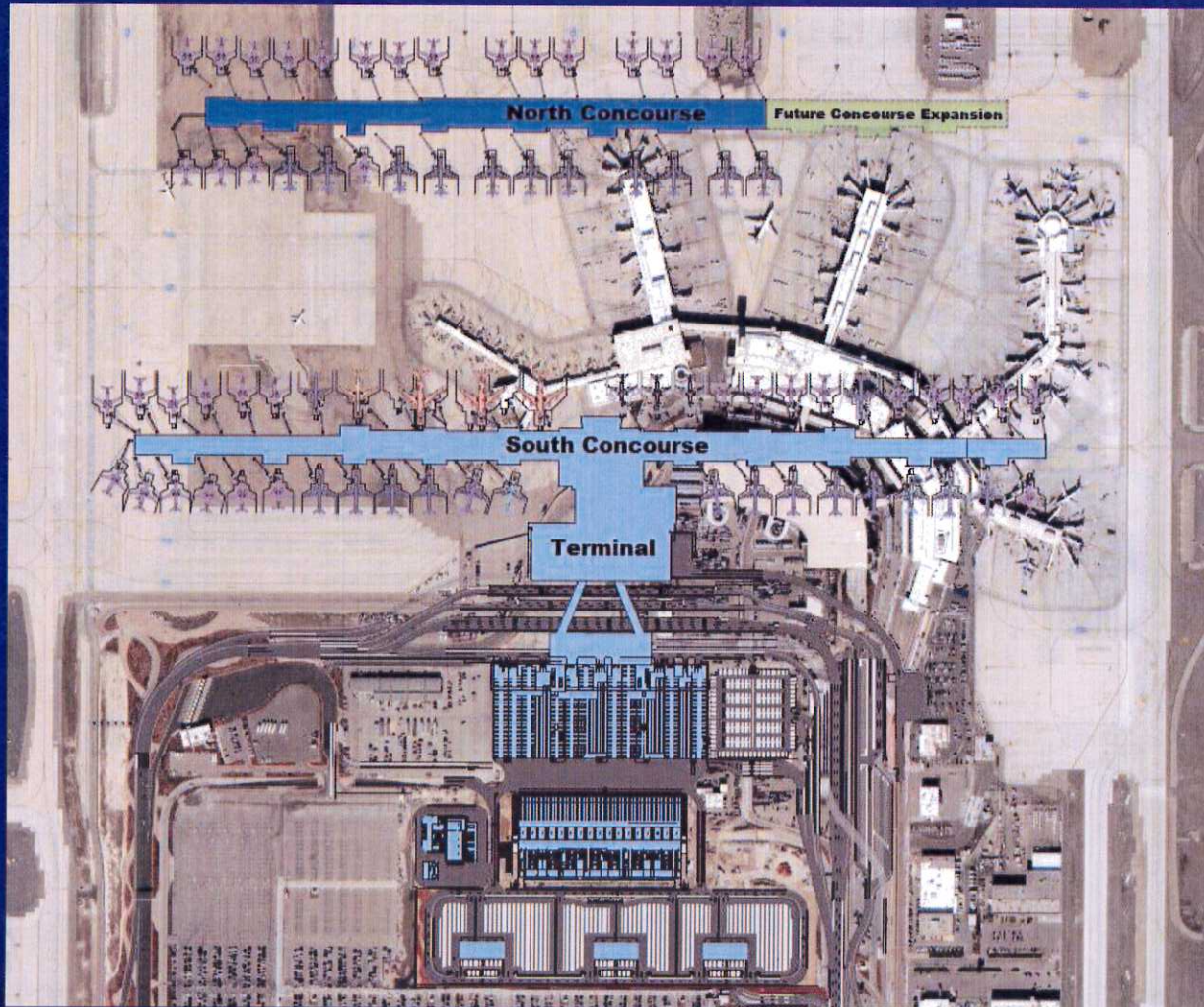
- **Renovation of existing Concourse B, C, D is estimated at \$417 million**
 - Current financial models reflect only \$211 million for renovation
 - Cost per enplaned passenger in 2025 is forecast at \$4.39 (FY 2013\$)
 - Updated renovation costs estimated at \$417 million

- **Construction of the North Concourse with 30 gates is estimated at \$737 million**
 - Net increase in North Concourse project would be \$526 million (\$737 million less \$211 million previously modeled)
 - Cost per enplaned passenger in 2025 is forecast at \$6.60 (FY 2013\$)

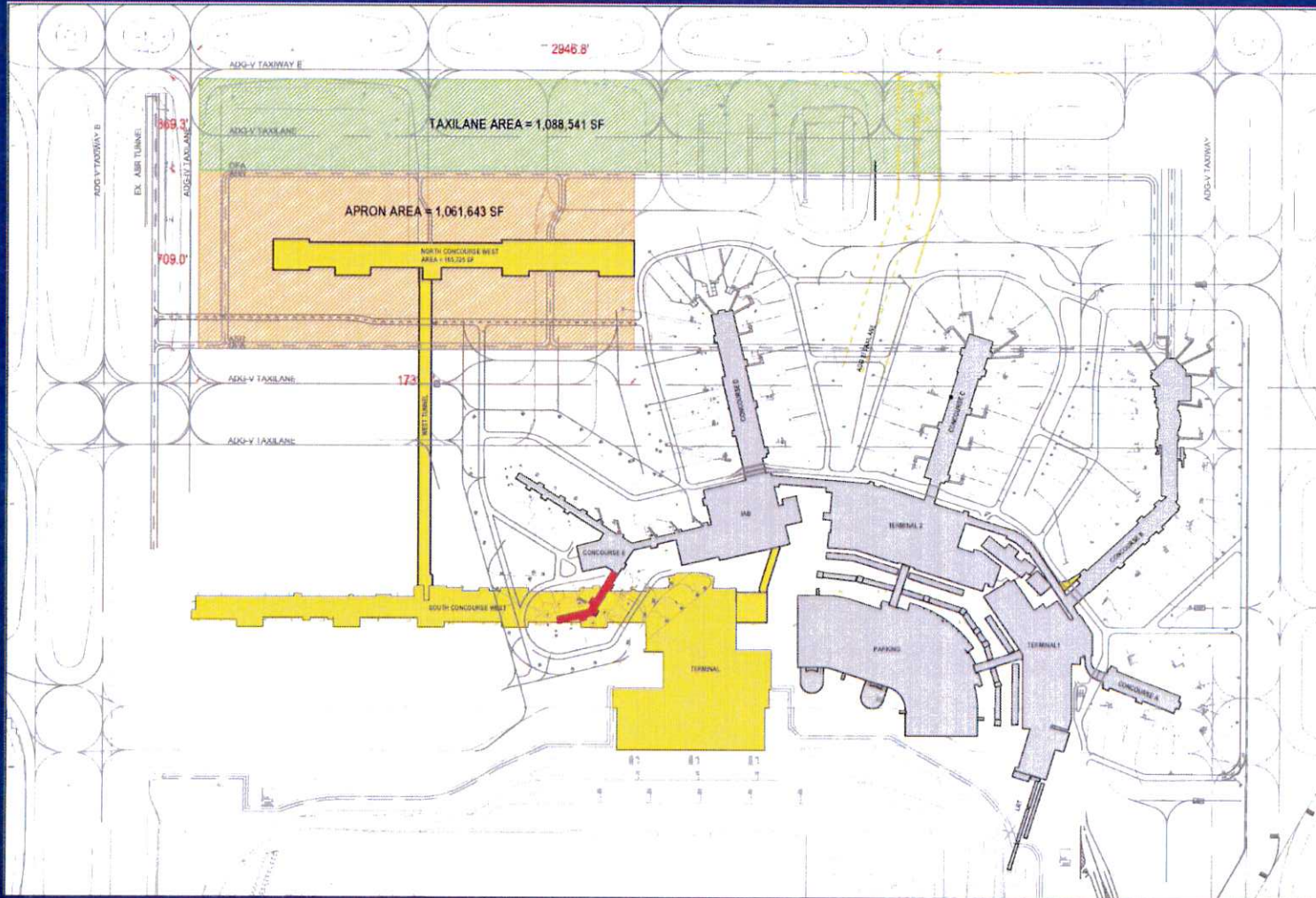
TRP Phase 1 – 72 Narrow Body Gates



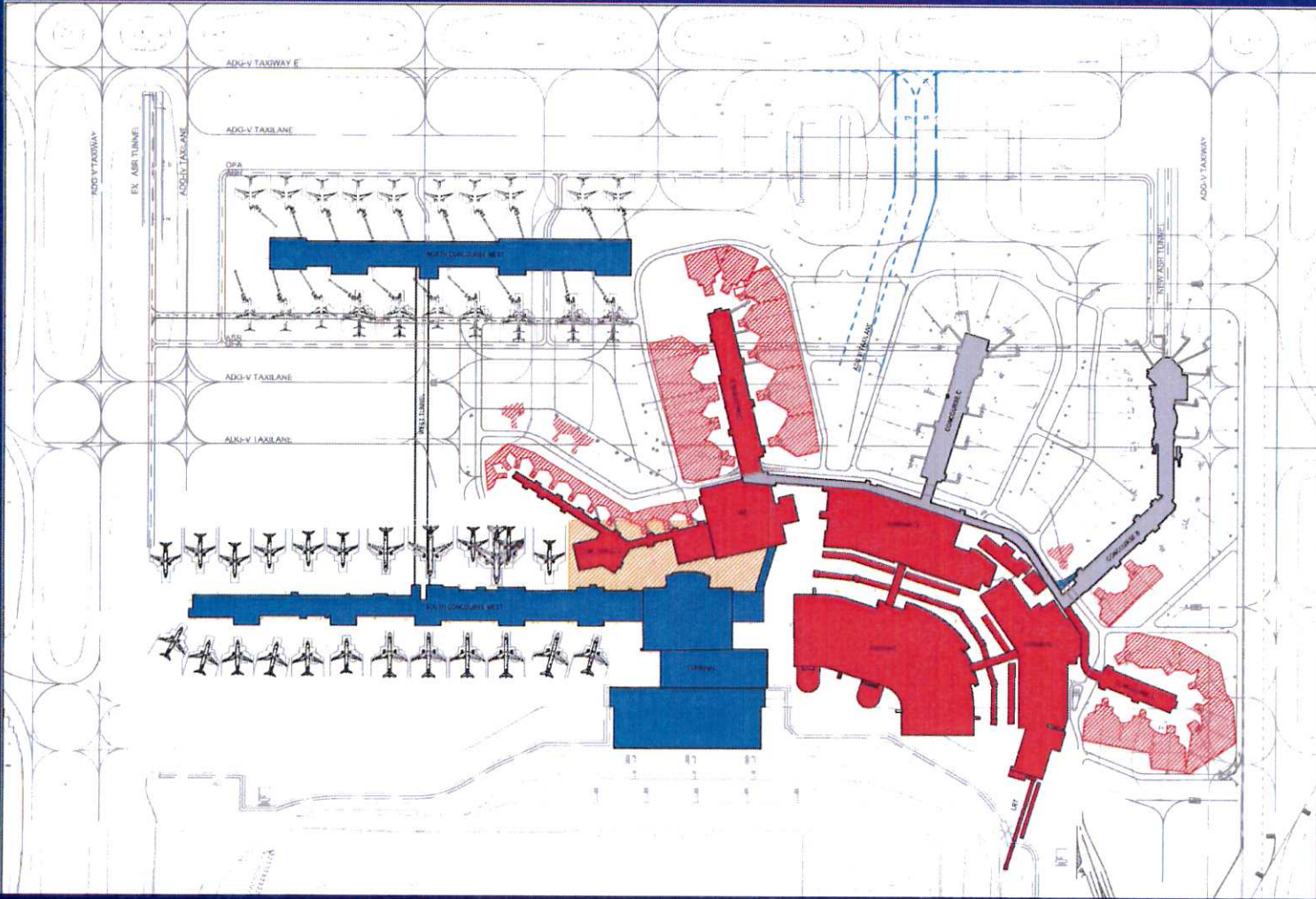
TRP w/ North Concourse – 77 Narrow Body Gates



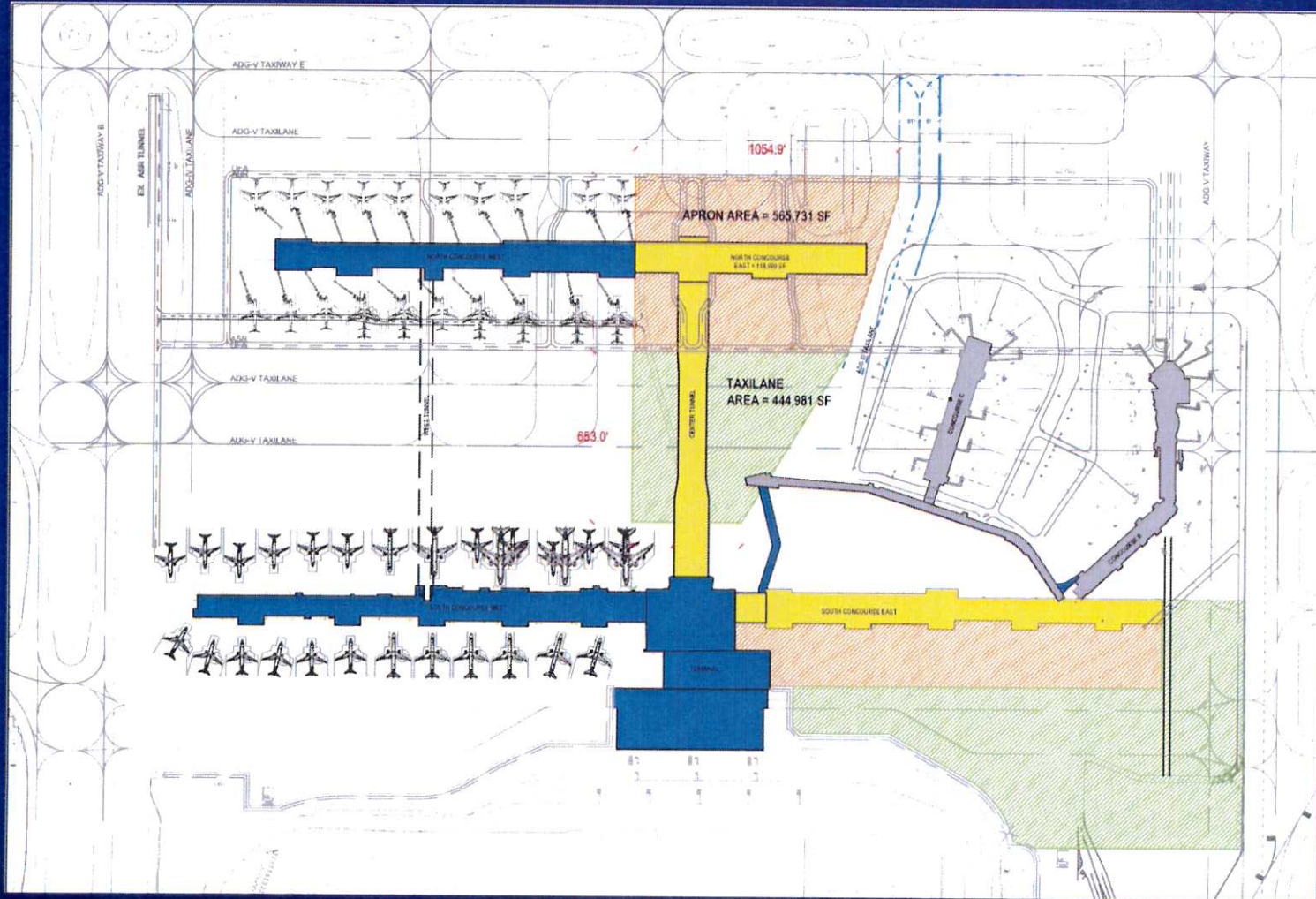
North Concourse – Phasing



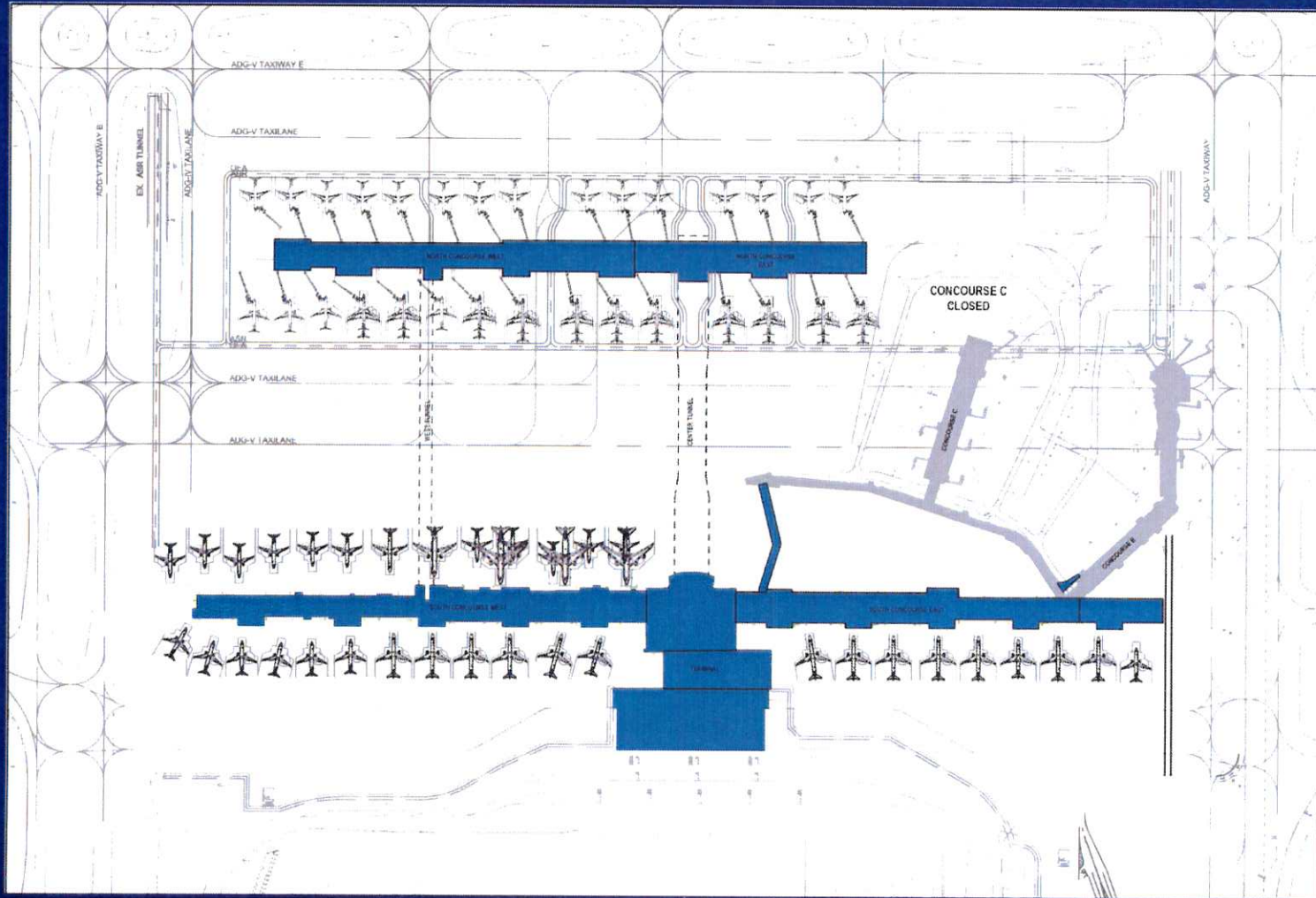
North Concourse – Phasing



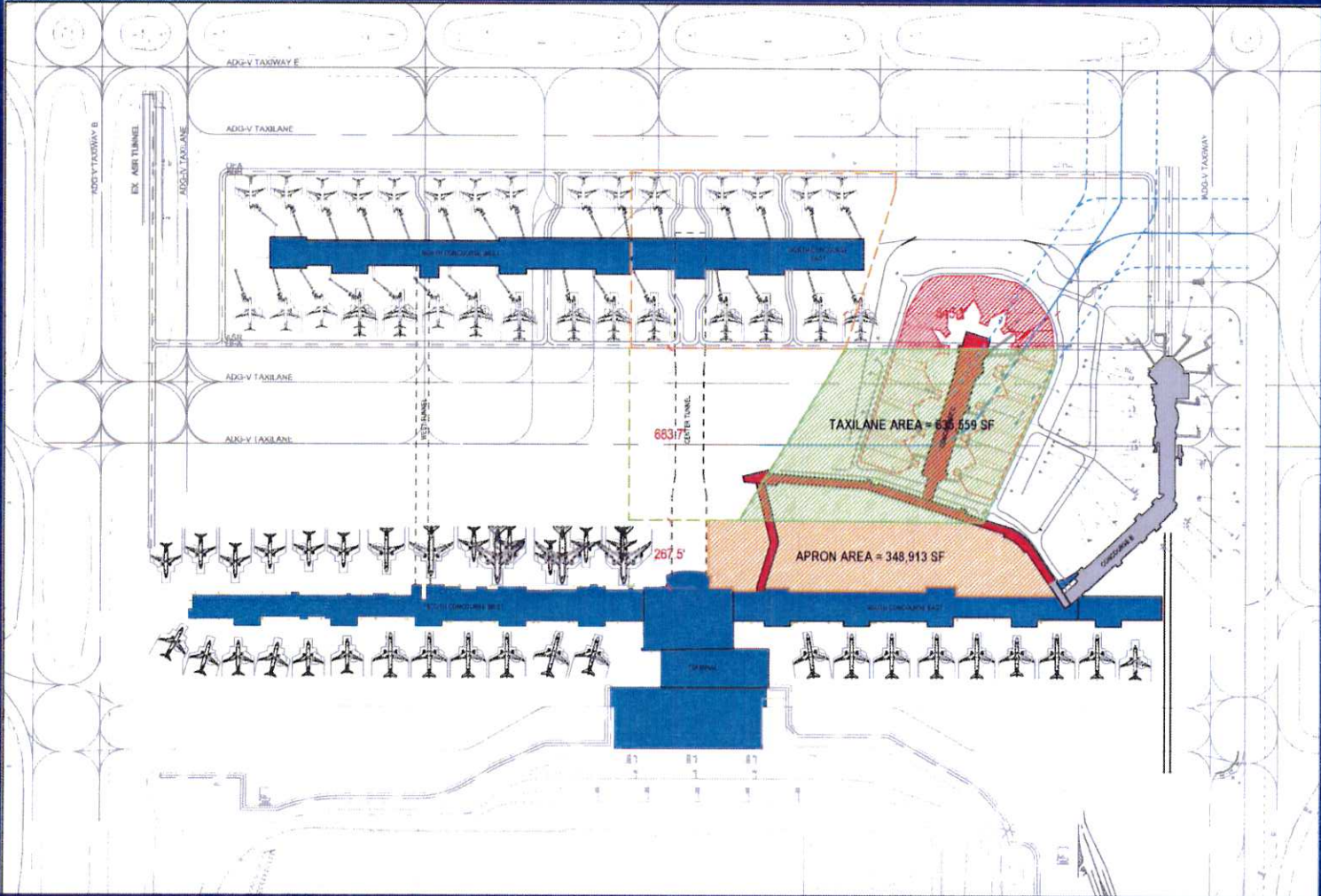
North Concourse – Phasing



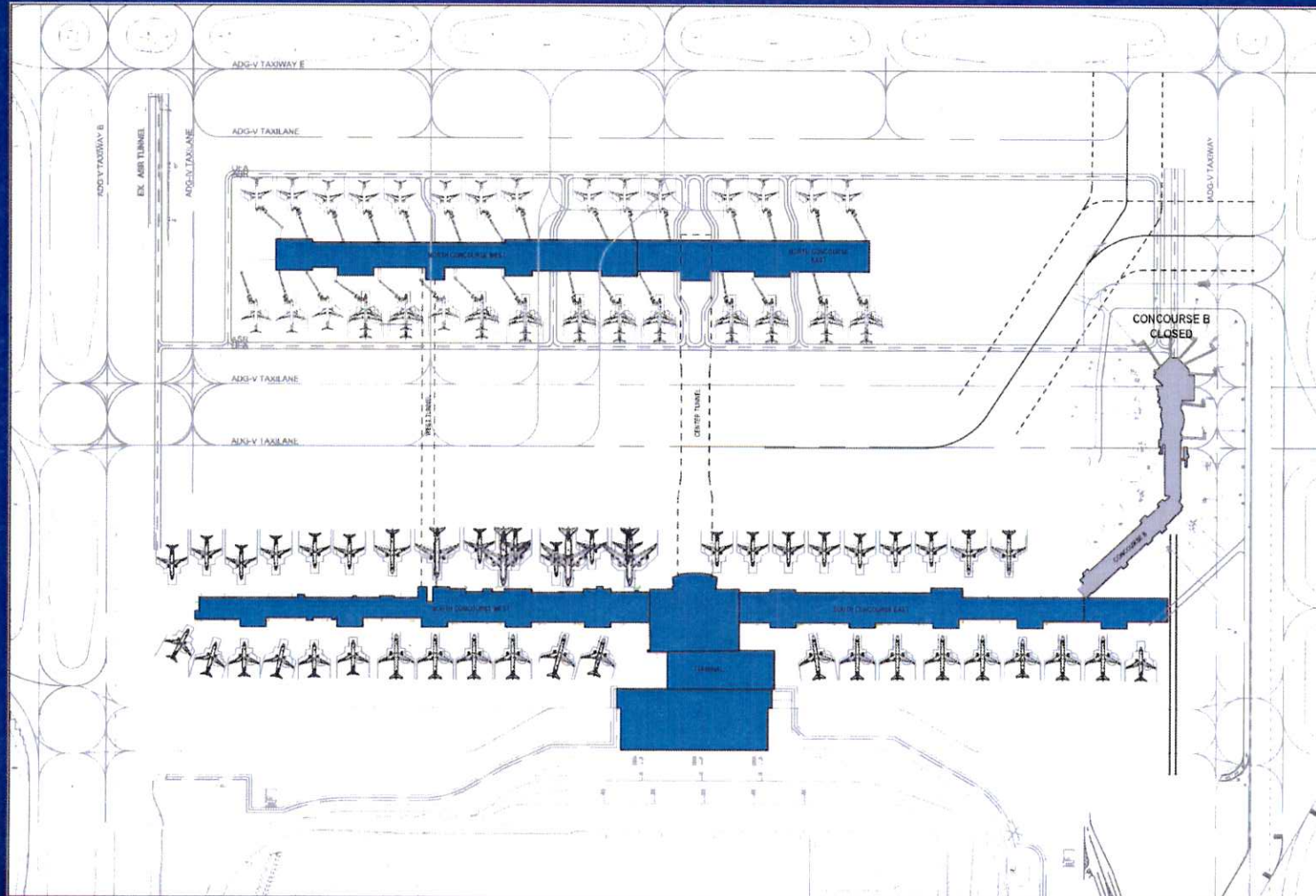
North Concourse – Phasing



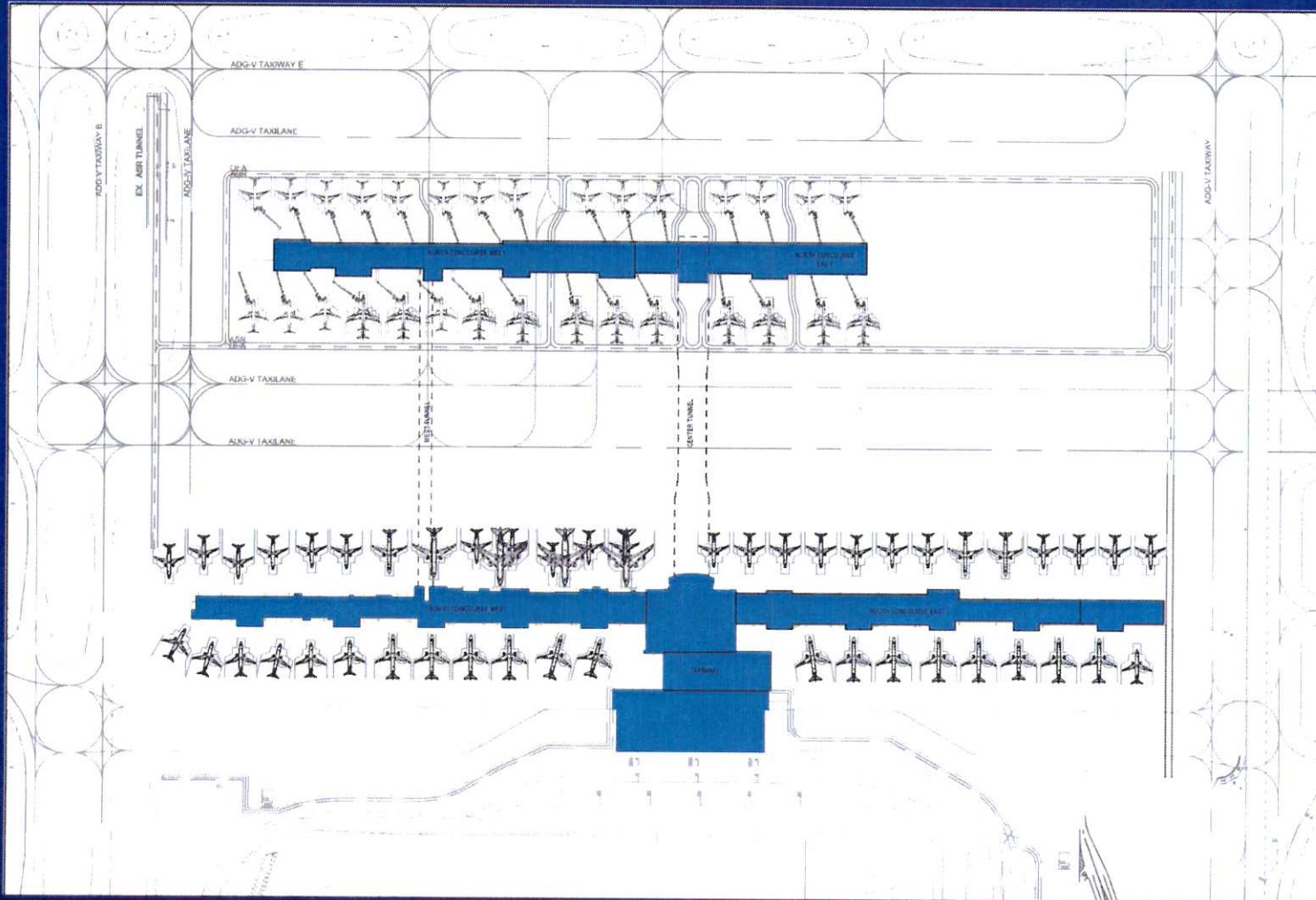
North Concourse - Phasing



North Concourse – Phasing



North Concourse – Phasing



North Concourse Program

- Builds additional 30 gates on North Cce
- Creates opportunity for gate expansion
- Provides new, modern facilities for all airlines
- Improves customer service for all passengers
- Facilitates improved non-airline concession revenues
- Minimizes number of airline relocations
- Streamlines aircraft movements
- Shorter construction duration than renovation
- Possible hardstanding and related bussing
- Affordable CPE

DEPARTMENT OF AIRPORTS
BOARD MEETING

25 May 2016

INFORMATIONAL ITEMS

SALT LAKE CITY DEPARTMENT OF AIRPORTS
(An Enterprise Fund of Salt Lake City Corporation)
Statements of Net Position (unaudited)

<i>March 31,</i>	2016	2015
ASSETS		
Current Assets		
Cash and cash equivalents		
Unrestricted	\$ 10,000,000	\$ 10,000,000
Designated for future development	189,401,241	167,742,518
Airline and rental fees receivable	15,445,673	16,753,520
Other current assets	3,922,036	4,759,926
Total current assets	218,768,950	199,255,964
Noncurrent Assets		
Restricted cash and cash equivalents		
Construction projects	111,872,182	109,337,719
Customer facility charges	9,465,211	51,277,718
Operation and maintenance reserve fund	15,669,933	15,157,717
Renewal and replacement reserve fund	5,000,000	5,000,000
Noncurrent investments	44,950,842	54,701,110
Total noncurrent assets and investments	186,958,168	235,474,264
Capital assets		
Land	99,156,552	93,005,223
Building and improvements	1,177,910,127	1,178,158,725
Equipment	133,821,404	130,771,810
Construction in progress	290,717,080	169,609,002
Total capital assets - at cost	1,701,605,163	1,571,544,760
Less accumulated depreciation	863,745,472	828,974,264
Net capital assets	837,859,691	742,570,496
Other assets		
Other receivables	974,554	794,908
Other long-term assets	91,574	134,411
Total other assets	1,066,128	929,319
Total noncurrent assets	1,025,883,987	978,974,079
Total Assets	1,244,652,937	1,178,230,043
Deferred Outflows of Resources		
Pensions	3,566,982	-
Total assets and deferred outflows of resources	\$ 1,248,219,919	\$ 1,178,230,043

SALT LAKE CITY DEPARTMENT OF AIRPORTS
(An Enterprise Fund of Salt Lake City Corporation)
Statements of Net Position (unaudited)

<i>March 31,</i>	2016	2015
LIABILITIES		
Current Liabilities		
Accounts payable	\$ 6,133,992	\$ 6,805,812
Accrued compensation	1,491,184	1,215,824
Net OPEB obligation	235,690	-
Other accrued liabilities	4,368,633	1,556,292
Deposits and advance rentals	4,048,721	3,567,936
Total current liabilities	16,278,220	13,145,864
Noncurrent Liabilities		
Noncurrent compensation liability	3,682,739	3,748,161
Net OPEB obligation	-	8,448,000
Net pension liability	20,232,458	-
Pollution remediation liability	180,745	192,968
Other long-term liabilities	3,484,570	1,586,920
Total noncurrent liabilities	27,580,512	13,976,049
Total Liabilities	43,858,732	27,121,913
Deferred Inflows of Resources		
Pensions	2,128,856	-
NET POSITION		
Restricted for construction projects	111,872,185	109,337,719
Restricted for customer facility charges	9,465,211	51,277,718
Restricted for operation and maintenance reserve fund	15,669,933	15,157,717
Restricted for renewal and replacement reserve fund	5,000,000	5,000,000
Total Restricted	142,007,329	180,773,154
Net investment in capital assets	837,859,688	742,570,496
Unrestricted	222,365,314	227,764,481
Net Position	\$ 1,202,232,331	\$ 1,151,108,131

SALT LAKE CITY DEPARTMENT OF AIRPORTS

(An Enterprise fund of Salt Lake City Corporation)

Statements of Revenues, Expenses, and Changes in Fund Net Position (unaudited)

for the nine month period ended March 31.

	2016	2015
Operating Revenues		
Airfield	\$ 23,367,023	\$ 22,689,544
Terminals	38,309,283	36,869,613
Landside	42,623,177	39,250,776
Auxiliary airports	632,425	656,613
General aviation	1,574,768	1,658,466
Support areas	5,317,831	5,831,873
Other	1,519,947	1,857,040
Operating revenues	113,344,454	108,813,925
Less airline revenue sharing	(7,125,534)	(6,838,390)
Total operating revenues	106,218,920	101,975,535
Operating Expenses		
Airfield	20,943,032	18,756,220
Terminals	27,453,297	27,309,264
Landside	8,547,150	8,573,810
Auxiliary airports	1,159,851	1,155,585
General aviation	761,885	913,502
Support areas	888,140	767,649
Roads and grounds	5,298,288	4,756,237
Other	1,934,161	1,720,078
Total operating expenses before depreciation	66,985,804	63,952,345
Operating Income Before Depreciation	39,233,115	38,023,190
Depreciation Expense	46,429,407	45,486,079
Operating Loss	(7,196,292)	(7,462,889)
Non-Operating Revenues (Expenses)		
Passenger facility charges	31,088,491	30,019,962
Customer facility charges	11,824,461	11,835,150
Gain on disposition of property and equipment	287,676	131,432
Interest income	1,465,940	1,317,787
Net non-operating income	44,666,568	43,304,331
Capital Contributions		
Contributions and grants, principally Airport Improvement Program	6,779,210	5,576,261
State grants	1,516	21,541
Total capital contributions	6,780,726	5,597,802
Net Position		
Increase in net position	44,251,003	41,439,243
Net Position, beginning of period	1,157,981,328	1,109,668,889
Net Position, end of period	\$ 1,202,232,331	\$ 1,151,108,131

SALT LAKE CITY DEPARTMENT OF AIRPORTS
(An Enterprise fund of Salt Lake City Corporation)
OPERATING REVENUES AND EXPENDITURES TO BUDGET

	JULY - MAR 2016 ACTUALS	JULY - MAR 2016 BUDGET	SURPLUS/ DEFICIT	PERCENT CHANGE
Revenues:				
Landing Fees	\$ 19,735,627	\$ 18,548,800	\$ 1,186,827	6.4%
Fuel Farm	396,066	396,000	66	0.0%
Aircraft Remain Overnight Fees	186,700	140,500	46,200	32.9%
Cargo Bldg. & Ramp Use Fee	1,203,594	1,211,700	(8,106)	-0.7%
Security Charges to TSA	233,941	237,300	(3,359)	-1.4%
Extraordinary Service Charges	87,746	98,900	(11,154)	-11.3%
Passenger Loading Bridges	1,442,306	1,221,500	220,806	18.1%
Tenant Telephone Fees	264,737	264,400	337	0.1%
Terminal Rents	22,689,636	22,091,800	597,836	2.7%
Executive Terminal	32,738	50,300	(17,562)	-34.9%
General Aviation Hangars	835,091	859,500	(24,409)	-2.8%
FBO Hangars/Fuel Oil Royalty	428,662	406,200	22,462	5.5%
Flight Kitchens	1,026,405	873,000	153,405	17.6%
Other Buildings & Office Space	4,005,419	4,098,800	(93,381)	-2.3%
Food Service & Vending	7,509,909	7,286,700	223,209	3.1%
News/Gift Shop	4,129,410	3,986,700	142,710	3.6%
Car Rental	16,285,139	16,337,800	(52,661)	-0.3%
Leased Site Areas	1,468,272	1,763,600	(295,328)	-16.7%
Auto Parking/Ground Transportation	26,345,268	25,202,500	1,142,768	4.5%
Advertising	879,542	700,900	178,642	25.5%
State Aviation Fuel Tax	2,065,538	1,929,800	135,738	7.0%
Military	109,210	102,600	6,610	6.4%
Glycol Recycling Sales	259,353	412,000	(152,647)	-37.1%
ARFF Training	661,102	398,200	262,902	66.0%
Other	1,063,043	873,700	189,343	21.7%
Less: Airline Revenue Sharing	(7,125,534)	(7,500,800)	375,266	-5.00%
Total Operating Revenues	106,218,920	101,992,400	4,226,520	4.1%
Expenses:				
Salary & Wages	24,435,494	24,572,066	136,572	0.6%
Employee Benefits	11,115,289	11,550,752	435,463	3.8%
Maintenance Supplies	5,999,237	5,838,372	(160,865)	-2.8%
Automotive Supplies	1,340,312	1,640,200	299,888	18.3%
Other Supplies	886,890	1,234,997	348,107	28.2%
Insurance Premiums	673,844	1,877,000	1,203,156	64.1%
Janitorial Service	4,957,528	5,123,400	165,872	3.2%
Maintenance Contracts	1,155,402	1,190,500	35,098	2.9%
Other Contractual Services	3,030,133	2,642,191	(387,942)	-14.7%
Professional & Tech Service	3,604,104	4,312,400	708,296	16.4%
Utilities	4,956,369	5,379,500	423,131	7.9%
Administrative Service Fee	1,074,560	1,087,800	13,240	1.2%
Aircraft Rescue Fire Fighting	3,382,291	2,956,500	(425,791)	-14.4%
Other Expenses	1,185,148	1,073,600	(111,548)	-10.4%
Total Operating Expenses	67,796,601	70,479,278	2,682,677	3.8%
Capital Costs - E&M Division	810,796	810,796	-	0.0%
Total Operating Expense	66,985,805	69,668,482	2,682,677	3.9%
Operating Income	\$ 39,233,115	\$ 32,323,918	\$ 6,909,197	21.4%

SALT LAKE CITY DEPARTMENT OF AIRPORTS

(An Enterprise fund of Salt Lake City Corporation)

OPERATING REVENUES AND EXPENDITURES TO PRIOR YEAR (unaudited)

	JULY - MARCH 2016	JULY - MARCH 2015	SURPLUS/ (DEFICIT)	PERCENT CHANGE
Revenues:				
Landing Fees	\$ 19,735,627	\$ 19,404,876	\$ 330,751	1.7%
Fuel Farm	396,066	396,067	(1)	0.0%
Aircraft Remain Overnight Fees	186,700	167,100	19,600	11.7%
Cargo Bldg. & Ramp Use Fee	1,203,594	1,838,706	(635,112)	-34.5%
Security Charges to TSA	233,941	238,975	(5,034)	-2.1%
Extraordinary Service Charges	87,746	89,442	(1,696)	-1.9%
Passenger Loading Bridges	1,442,306	1,189,526	252,780	21.3%
Tenant Telephone Fees	264,737	270,753	(6,016)	-2.2%
Terminal Rents	22,689,636	22,096,840	592,796	2.7%
Executive Terminal	32,738	148,358	(115,620)	-77.9%
General Aviation Hangars	835,091	852,685	(17,594)	-2.1%
FBO Hangars/Fuel Oil Royalty	428,662	398,488	30,174	7.6%
Flight Kitchens	1,026,405	907,475	118,930	13.1%
Other Buildings & Office Space	4,005,419	4,199,555	(194,136)	-4.6%
Food Service & Vending	7,509,909	7,244,414	265,495	3.7%
News/Gift Shops	4,129,410	3,894,876	234,534	6.0%
Car Rental	16,285,139	14,927,718	1,357,421	9.1%
Leased Site Areas	1,468,272	1,540,075	(71,803)	-4.7%
Auto Parking/Ground Transportation	26,345,268	24,331,466	2,013,802	8.3%
Advertising	879,542	758,798	120,744	15.9%
State Aviation Fuel Tax	2,065,538	1,917,801	147,737	7.7%
Military	109,210	190,149	(80,940)	-42.6%
Glycol Recycling Sales	259,353	395,408	(136,055)	-34.4%
ARFF Training	661,102	345,837	315,265	91.2%
Other	1,063,043	1,068,537	(5,494)	-0.5%
Less: Airline Revenue Sharing	(7,125,534)	(6,838,390)	(287,144)	4.2%
Operating Revenue	106,218,920	101,975,535	4,243,385	4.2%
Expenses:				
Salary & Wages	24,435,494	23,419,499	1,015,995	4.3%
Employee Benefits	11,115,289	10,887,841	227,448	2.1%
Maintenance Supplies	5,999,237	4,083,748	1,915,489	46.9%
Automotive Supplies	1,340,312	1,278,350	61,962	4.8%
Other Supplies	886,890	983,622	(96,732)	-9.8%
Insurance Premiums	673,844	1,647,453	(973,609)	-59.1%
Janitorial Service	4,957,528	4,831,912	125,616	2.6%
Maintenance Contracts	1,155,402	1,158,595	(3,193)	-0.3%
Other Contractual Services	3,030,133	2,283,409	746,724	32.7%
Professional & Tech Service	3,604,104	3,956,390	(352,286)	-8.9%
Utilities	4,956,369	5,032,720	(76,351)	-1.5%
Administrative Service Fee	1,074,560	1,119,681	(45,121)	-4.0%
Aircraft Rescue Fire Fighting	3,382,291	3,150,895	231,396	7.3%
Other Expenses	1,185,148	1,002,144	183,004	18.3%
Total Operating Expenses	67,796,601	64,836,259	2,960,342	4.6%
Capital Costs - Engineering Division	810,796	883,914	(73,118)	-8.3%
Total Operating Expense	66,985,805	63,952,345	3,033,460	4.7%
Operating Income	\$ 39,233,115	\$ 38,023,190	\$ 1,209,925	3.2%



**SALT LAKE CITY INTERNATIONAL AIRPORT
AIR TRAFFIC STATISTICS AND ACTIVITY REPORT
THREE MONTHS ENDED MARCH 2016**

	March 2016	CHANGE	YTD 2016	CHANGE	12 MO ROLLING Ending 03/2016	CHANGE
PASSENGERS						
<i>DOMESTIC</i>						
Enplaned	981,227	1.08%	2,665,201	2.70%	10,861,647	3.08%
Deplaned	974,161	1.96%	2,640,140	2.27%	10,861,735	2.79%
TOTAL DOMESTIC	1,955,388	1.52%	5,305,341	2.48%	21,723,382	2.93%
<i>INTERNATIONAL</i>						
Enplaned	22,881	17.00%	61,905	12.52%	282,611	43.17%
Deplaned	22,695	15.28%	62,249	11.89%	288,535	47.08%
TOTAL INTERNATIONAL	45,576	16.14%	124,154	12.20%	571,146	45.11%
TOTAL PASSENGERS	2,000,964	1.81%	5,429,495	2.69%	22,294,528	3.71%
LANDED WEIGHT						
Air Carriers	1,115,315,834	2.95%	3,088,957,113	3.05%	12,344,107,195	1.77%
Cargo Carriers	93,395,128	17.50%	253,735,496	7.88%	1,053,050,702	6.94%
TOTAL LANDED WEIGHT (LBS)	1,208,710,962	3.95%	3,342,692,609	3.40%	13,397,157,897	2.16%
MAIL						
Enplaned	1,862,968	-16.08%	5,384,389	-8.70%	23,597,670	18.57%
Deplaned	578,284	-41.04%	2,209,594	-25.61%	11,978,555	23.92%
TOTAL MAIL (LBS)	2,441,252	-23.73%	7,593,983	-14.37%	35,576,225	20.32%
CARGO						
Enplaned	14,918,520	14.50%	41,862,131	7.60%	171,611,184	2.69%
Deplaned	14,897,221	11.16%	41,689,369	6.32%	173,334,622	6.18%
TOTAL CARGO (LBS)	29,815,741	12.80%	83,551,500	6.96%	344,945,806	4.42%
MAIL & CARGO						
Enplaned	7,459	14.49%	20,931	7.60%	85,806	2.70%
Deplaned	7,449	11.16%	20,845	6.32%	86,667	6.18%
TOTAL MAIL & CARGO (TONS)	14,908	12.80%	41,776	6.96%	172,473	4.42%
AIRCRAFT OPERATIONS						
Passenger Aircraft	21,148	1.47%	59,182	1.69%	234,542	-1.85%
All-Cargo Aircraft	1,746	17.65%	4,748	6.79%	19,032	2.95%
General Aviation	4,441	-18.89%	13,165	-14.27%	51,232	-20.00%
Military	643	215.20%	1,858	244.71%	7,455	228.27%
TOTAL AIRCRAFT OPERATIONS	27,978	-0.10%	78,953	0.53%	312,261	-3.55%

**SALT LAKE CITY INTERNATIONAL AIRPORT
PASSENGER TRAFFIC REPORT
THREE MONTHS ENDED MARCH 2016**

	March 2015	March 2016	% CHANGE	YTD 2015	YTD 2016	% CHANGE	12 MO ROLLING Ending 03/2016	% CHANGE
ENPLANED PASSENGERS								
ALASKA	25,029	21,420	-14.42%	70,934	62,043	-12.53%	260,878	5.06%
Horizon Air / Alaska	4,331	5,642	30.27%	12,762	15,853	24.22%	55,521	54.65%
Skywest / Alaska	8,410	8,463	0.63%	19,367	22,360	15.45%	95,669	74.23%
AMERICAN	26,397	52,832	100.14%	66,581	157,847	137.08%	417,977	77.42%
American Eagle/Republic	6,179	0	-100.00%	14,767	0	-100.00%	29,435	-32.86%
Compass	0	6,254	100.00%	0	10,849	100.00%	14,259	100.00%
Envoy Air	0	7,146	100.00%	0	17,162	100.00%	20,703	53.54%
American/Mesa Air	0	0	0.00%	388	292	-24.74%	833	-32.88%
SkyWest (American)	6,899	2,895	-58.04%	17,901	8,377	-53.20%	52,449	4.64%
DELTA	478,470	502,708	5.07%	1,227,988	1,292,185	5.23%	5,479,749	7.58%
SkyWest (Delta Connection)	197,708	192,746	-2.51%	516,694	539,969	4.50%	2,197,591	-4.49%
Compass (Delta Connection)	10,937	6,670	-39.01%	52,351	21,266	-59.38%	151,987	-24.16%
FRONTIER	16,357	17,474	6.83%	55,638	53,609	-3.65%	193,479	-22.56%
JETBLUE	17,869	19,753	10.54%	54,402	61,276	12.64%	218,193	14.01%
SOUTHWEST	103,950	105,685	1.67%	298,029	310,910	4.32%	1,194,555	1.24%
UNITED	26,154	29,702	13.57%	61,243	79,758	30.23%	213,536	89.49%
Express Jet	838	50	-94.03%	1,549	248	-83.99%	1,300	-95.65%
Mesa Airlines (United Express)	0	464	100.00%	0	900	100.00%	7,138	100.00%
Republic Airways (United)	1,086	46	-95.76%	1,157	900	-22.21%	21,026	575.43%
Shuttle America (United Express)	1,913	1,573	-17.77%	8,269	2,248	-72.81%	9,569	-77.86%
SkyWest (United Express)	23,076	21,782	-5.61%	73,168	65,362	-10.67%	282,327	-1.68%
Trans States	0	396	100.00%	0	2,631	100.00%	2,631	100.00%
US AIRWAYS	31,739	0	-100.00%	88,661	0	-100.00%	209,731	-35.17%
Mesa (US Airways Express)	0	0	0.00%	0	0	0.00%	0	0.00%
SkyWest (US Airways Express)	2,467	0	-100.00%	6,806	0	-100.00%	9,048	-59.25%
Charters	459	407	-11.33%	1,519	1,061	-30.15%	4,674	-64.97%
TOTAL ENPLANED PASSENGERS	990,268	1,004,108	1.40%	2,650,174	2,727,106	2.90%	11,144,258	3.82%
AeroMexico	0	5	100.00%	0	5	100.00%	5	100.00%
ALASKA AIR	23,210	21,109	-9.05%	69,000	60,369	-12.51%	253,412	4.50%
Horizon Air / Alaska	3,998	5,451	36.34%	12,472	15,336	22.96%	54,563	47.90%
Skywest / Alaska	8,669	9,001	3.83%	19,717	23,712	20.26%	97,909	75.06%
AMERICAN	26,747	50,507	88.83%	70,103	155,435	121.72%	419,332	69.58%
American Eagle/Republic	6,010	0	-100.00%	14,894	0	-100.00%	29,289	-37.26%
Compass	0	6,202	100.00%	0	10,596	100.00%	13,923	100.00%
Envoy Air (American)	0	6,991	100.00%	0	16,416	100.00%	20,293	59.66%
American/Mesa Air	0	0	0.00%	295	379	28.47%	1,034	-12.74%
SkyWest (American)	6,899	2,798	-59.44%	17,789	8,113	-54.39%	51,311	3.26%
DELTA	473,075	497,834	5.23%	1,218,970	1,278,047	4.85%	5,487,590	7.35%
SkyWest (Delta Connection)	196,206	193,021	-1.62%	515,519	542,375	5.21%	2,205,009	-3.61%
Compass (Delta Connection)	10,674	6,451	-39.56%	51,582	20,976	-59.33%	150,184	-31.19%
FRONTIER	16,489	17,370	5.34%	59,813	53,751	-10.13%	195,657	-22.87%
JETBLUE	17,934	19,337	7.82%	54,858	60,226	9.79%	218,896	14.66%
SOUTHWEST	101,831	104,991	3.10%	295,463	301,565	2.07%	1,198,662	0.92%
UNITED	25,386	30,388	19.70%	60,792	81,377	33.86%	212,431	87.69%
Express Jet	888	50	-94.37%	1,731	251	-85.50%	1,245	-95.87%
Mesa Airlines / United Express	0	501	100.00%	0	944	100.00%	7,880	100.00%
Republic Airways (United)	1,114	69	-93.81%	1,181	1,148	-2.79%	24,010	573.87%
Shuttle America (United Express)	1,816	1,609	-11.40%	7,978	2,292	-71.27%	9,680	-77.69%
SkyWest (United Express)	22,285	21,774	-2.29%	71,053	64,449	-9.29%	274,384	-0.98%
Trans States	0	485	100.00%	0	2,642	100.00%	2,642	100.00%
US AIRWAYS	29,245	0	-100.00%	86,016	0	-100.00%	205,275	-35.14%
Mesa (US Airways Express)	0	0	0.00%	0	0	0.00%	0	0.00%
SkyWest (US Airways Express)	2,079	0	-100.00%	6,404	0	-100.00%	8,859	-61.73%
Charters	542	912	68.27%	1,661	1,985	19.51%	6,795	-50.40%
TOTAL DEPLANED PASSENGERS	975,097	996,856	2.23%	2,637,291	2,702,389	2.47%	11,150,270	3.59%
TOTAL PASSENGERS*	1,965,365	2,000,964	1.81%	5,287,465	5,429,495	2.69%	22,294,528	3.71%
INTERNATIONAL - ENPLANED								
DELTA	13,184	15,267	15.80%	36,174	40,397	11.67%	196,519	75.24%
SkyWest (Delta Connection)	4,327	7,614	75.96%	11,681	21,508	84.13%	64,807	-11.09%
Compass	2,045	0	-100.00%	5,933	0	-100.00%	21,117	125.92%
FRONTIER	0	0	0.00%	1,231	0	-100.00%	0	-100.00%
Charters	0	0	0.00%	0	0	0.00%	168	100.00%
TOTAL ENPLANED INTERNATIONAL	19,556	22,881	17.00%	55,019	61,905	12.52%	282,611	43.17%
AeroMexico	0	5	100.00%	0	5	100.00%	5	100.00%
DELTA	13,627	15,149	11.17%	37,269	40,854	9.62%	203,739	79.89%
SkyWest (Delta Connection)	4,029	7,541	87.17%	11,402	21,390	87.60%	65,819	-6.51%
Compass	2,030	0	-100.00%	5,707	0	-100.00%	18,803	104.29%
FRONTIER	0	0	0.00%	1,255	0	-100.00%	0	-100.00%
Charters	0	0	0.00%	0	0	0.00%	169	100.00%
TOTAL DEPLANED INTERNATIONAL	19,686	22,695	15.28%	55,633	62,249	11.89%	288,535	47.08%
TOTAL INTERNATIONAL PASSENGERS	39,242	45,576	16.14%	110,652	124,154	12.20%	571,146	45.11%

*Includes International

**SALT LAKE CITY INTERNATIONAL AIRPORT
THREE MONTHS ENDED MARCH 2016
Based on Total Enplanements**

MARKET SHARE

	March 2015	MARKET SHARE	March 2016	MARKET SHARE	YTD 2015	MARKET SHARE	YTD 2016	MARKET SHARE	12 MO ROLLING Ending 03/2015	12 MO ROLLING Ending 03/2016	MARKET SHARE
ALASKA	37,770	3.81%	35,525	3.54%	103,063	3.89%	100,256	3.68%	339,124	412,068	3.70%
AMERICAN	39,475	3.99%	69,127	6.88%	99,637	3.76%	194,527	7.13%	344,278	535,656	4.81%
DELTA	687,115	69.39%	702,124	69.93%	1,797,033	67.81%	1,853,420	67.96%	7,594,681	7,829,327	70.25%
FRONTIER	16,357	1.65%	17,474	1.74%	55,638	2.10%	53,609	1.97%	249,839	193,479	1.74%
JETBLUE	17,869	1.80%	19,753	1.97%	54,402	2.05%	61,276	2.25%	191,387	218,193	1.96%
SOUTHWEST	103,950	10.50%	105,685	10.53%	298,029	11.25%	310,910	11.40%	1,179,957	1,194,555	10.72%
UNITED	53,067	5.36%	54,013	5.38%	145,386	5.49%	152,047	5.58%	476,035	537,527	4.82%
US AIRWAYS	34,206	3.45%	0	0.00%	95,467	3.60%	0	0.00%	345,692	218,779	1.96%
Charters	459	0.05%	407	0.04%	1,519	0.06%	1,061	0.04%	13,343	4,674	0.04%
TOTAL ENPLANEMENTS	990,268	100%	1,004,108	100%	2,650,174	100%	2,727,106	100%	10,734,336	11,144,258	100%

PERCENT CHANGE YOY

	March 2015	March 2016	PERCENT CHANGE	YTD 2015	YTD 2016	PERCENT CHANGE	12 MO ROLLING Ending 03/2015	12 MO ROLLING Ending 03/2016	PERCENT CHANGE
ALASKA	37,770	35,525	-5.94%	103,063	100,256	-2.72%	339,124	412,068	21.51%
AMERICAN	39,475	69,127	75.12%	99,637	194,527	95.24%	344,278	535,656	55.59%
DELTA	687,115	702,124	2.18%	1,797,033	1,853,420	3.14%	7,594,681	7,829,327	3.09%
FRONTIER	16,357	17,474	6.83%	55,638	53,609	-3.65%	249,839	193,479	-22.56%
JETBLUE	17,869	19,753	10.54%	54,402	61,276	12.64%	191,387	218,193	14.01%
SOUTHWEST	103,950	105,685	1.67%	298,029	310,910	4.32%	1,179,957	1,194,555	1.24%
UNITED	53,067	54,013	1.78%	145,386	152,047	4.58%	476,035	537,527	12.92%
US AIRWAYS	34,206	0	-100.00%	95,467	0	-100.00%	345,692	218,779	-36.71%
Charters	459	407	-11.33%	1,519	1,061	-30.15%	13,343	4,674	-64.97%
TOTAL ENPLANEMENTS	990,268	1,004,108	1.40%	2,650,174	2,727,106	2.90%	10,734,336	11,144,258	3.82%

**SALT LAKE CITY INTERNATIONAL AIRPORT
LANDING ACTIVITY
THREE MONTHS ENDED MARCH 2016**

	March 2015	March 2016	CHANGE	YTD 2015	YTD 2016	CHANGE	12 MO ROLLING Ending 03/2016	% CHANGE
TOTAL NUMBER OF LANDINGS								
SCHEDULED CARRIERS								
Aeromexico	0	1	100.00%	0	1	100.00%	1	100.00%
ALASKA	188	182	-3.19%	594	535	-9.93%	2,221	1.46%
Horizon Air / Alaska	93	93	0.00%	267	272	1.87%	1,012	18.92%
Skywest / Alaska	141	143	1.42%	317	382	20.50%	1,611	73.41%
AMERICAN	209	406	94.26%	534	1,194	123.60%	3,066	64.13%
Compass	0	90	100.00%	0	154	100.00%	201	100.00%
American Eagle/Republic	86	0	-100.00%	215	0	-100.00%	415	-40.03%
American/Mesa Air	0	0	0.00%	5	5	0.00%	14	-22.22%
Envoy Air (American)	0	119	100.00%	0	296	100.00%	363	46.37%
SkyWest (American)	154	63	-59.09%	401	181	-54.86%	1,129	-0.44%
DELTA	3,289	3,560	8.24%	8,736	9,409	7.70%	38,598	7.37%
SkyWest (Delta Connection)	3,733	3,756	0.62%	10,223	10,602	3.71%	41,918	-8.72%
Compass (Delta Connection)	155	94	-39.35%	769	310	-59.69%	2,157	-28.20%
FRONTIER	122	126	3.28%	412	387	-6.07%	1,384	-24.95%
JETBLUE	145	137	-5.52%	424	430	1.42%	1,596	11.22%
SOUTHWEST	831	820	-1.32%	2,383	2,382	-0.04%	9,703	-3.66%
UNITED	203	230	13.30%	474	645	36.08%	1,730	92.44%
Express Jet	18	1	-94.44%	36	5	-86.11%	26	-95.91%
Mesa / United Express	0	7	100.00%	0	13	100.00%	109	100.00%
Republic Airways Holdings	18	1	-94.44%	19	16	-15.79%	355	522.81%
SkyWest (United Express)	400	379	-5.25%	1,290	1,092	-15.35%	4,672	-7.81%
Shuttle America (United Express)	28	24	-14.29%	123	34	-72.36%	146	-78.90%
Trans States	0	10	100.00%	0	57	100.00%	57	100.00%
US AIRWAYS	219	0	-100.00%	630	0	-100.00%	1,530	-37.98%
Mesa (US Airways Express)	0	0	0.00%	0	0	0.00%	0	0.00%
SkyWest (US Airways)	52	0	-100.00%	150	0	-100.00%	199	-62.66%
SUBTOTAL SCHEDULED CARRIERS:	10,084	10,242	1.57%	28,002	28,402	1.43%	114,213	-1.97%
CHARTER CARRIERS								
ALLEGIAN AIR	0	0	0.00%	2	3	50.00%	11	-31.25%
BIGHORN AIRWAYS	0	0	0.00%	0	2	100.00%	8	14.29%
BOMBARDIER BUSINESS JETS	6	27	350.00%	28	83	196.43%	202	121.98%
CITATION SHARES	0	0	0.00%	0	0	0.00%	0	-100.00%
D&D AVIATION	5	7	40.00%	9	17	88.89%	60	39.53%
DELTA PRIVATE JETS	12	19	58.33%	50	65	30.00%	159	33.61%
EXECUTIVE JET MANAGEMENT	16	12	-25.00%	55	52	-5.45%	113	-5.04%
FLIGHT OPTIONS	26	13	-50.00%	84	58	-30.95%	191	-9.05%
KEYLIME AIR	20	0	-100.00%	54	5	-90.74%	112	-46.15%
NETJETS	128	142	10.94%	396	457	15.40%	1,142	14.09%
SIERRA PACIFIC	0	1	100.00%	1	1	0.00%	3	-62.50%
SUNSET AVIATION	6	1	-83.33%	11	10	-9.09%	28	-3.45%
SWIFT AIR	0	3	100.00%	3	11	266.67%	26	420.00%
OTHER CHARTER	116	107	-7.76%	398	425	6.78%	1,006	-9.53%
SUBTOTAL CHARTER CARRIERS:	335	332	-0.90%	1,091	1,189	8.98%	3,061	2.99%
CARGO CARRIERS								
ABX AIR (DHL)	1	0	-100.00%	1	1	0.00%	2	-66.67%
AERO CHARTER & TRANSPORT	21	22	4.76%	62	63	1.61%	255	1.19%
AIR TRANSPORT INTERNATIONAL	22	3	-86.36%	62	3	-95.16%	162	-36.72%
AIRNET SYSTEMS	0	0	0.00%	0	0	0.00%	0	-100.00%
AMERIFLIGHT	337	355	5.34%	1,026	1,006	-1.95%	4,133	-0.46%
CORPORATE AIR (BILLINGS)	103	120	16.50%	303	315	3.96%	1,271	1.84%
EMPIRE	18	20	11.11%	51	52	1.96%	209	-0.48%
FEDEX EXPRESS	122	157	28.69%	350	405	15.71%	1,641	16.47%
UPS	88	93	5.68%	260	269	3.46%	1,207	10.53%
WESTERN AIR EXPRESS	30	29	-3.33%	98	77	-21.43%	348	-41.02%
OTHER CARGO	2	74	3600.00%	15	183	1120.00%	285	819.35%
SUBTOTAL CARGO CARRIERS:	744	873	17.34%	2,228	2,374	6.55%	9,513	2.84%
TOTAL LANDINGS	11,163	11,447	2.54%	31,321	31,965	2.06%	126,787	-1.51%
TOTAL LANDING WEIGHT								
SCHEDULED CARRIERS								
Aeromexico	0	94,798	100.00%	0	94,798	100.00%	94,798	100.00%
ALASKA	24,546,200	24,425,500	-0.49%	78,943,500	71,551,000	-9.36%	299,334,200	-0.15%
Horizon Air / Alaska	5,742,750	5,742,750	0.00%	16,487,250	16,796,000	1.87%	62,491,000	18.92%
Skywest / Alaska	8,987,000	9,910,893	10.28%	20,619,000	26,309,270	27.60%	110,387,972	79.54%
AMERICAN	26,742,500	58,404,734	118.40%	68,111,700	175,046,334	157.00%	435,347,534	84.47%
Compass	0	6,745,500	100.00%	0	11,542,300	100.00%	15,064,950	100.00%
American Eagle/Republic	6,446,302	0	-100.00%	16,115,755	0	-100.00%	31,106,357	-40.03%
Envoy Air (American)	0	7,973,000	100.00%	0	19,832,000	100.00%	24,321,000	46.37%
American/Mesa Air	0	0	0.00%	367,500	367,500	0.00%	1,029,000	-22.22%
SkyWest (American)	7,238,000	2,961,000	-59.09%	18,847,000	8,507,000	-54.86%	53,063,000	-0.44%
DELTA	524,562,700	557,132,360	6.21%	1,404,115,604	1,471,332,960	4.79%	6,086,866,261	5.16%
SkyWest (Delta Connection)	219,634,300	222,638,400	1.37%	597,071,000	635,135,300	6.38%	2,486,672,900	-4.72%
Compass (Delta Connection)	11,649,569	7,063,772	-39.36%	57,765,257	23,152,972	-59.92%	161,798,750	-28.32%
FRONTIER	16,885,076	16,944,480	0.35%	56,563,460	52,082,350	-7.92%	189,953,250	-24.79%
JETBLUE	20,619,000	19,481,126	-5.52%	60,292,800	61,145,140	1.41%	226,979,658	11.22%

**SALT LAKE CITY INTERNATIONAL AIRPORT
LANDING ACTIVITY
THREE MONTHS ENDED MARCH 2016**

	March 2015	March 2016	CHANGE	YTD 2015	YTD 2016	CHANGE	12 MO ROLLING Ending 03/2016	% CHANGE
SOUTHWEST	105,786,000	105,380,000	-0.38%	308,026,000	311,442,000	1.11%	1,235,580,000	-3.05%
UNITED	29,025,900	33,232,600	14.49%	67,774,056	92,013,080	35.76%	243,990,042	88.68%
Express Jet	793,656	75,000	-90.55%	1,587,312	251,368	-84.16%	1,177,300	-95.80%
Mesa / United Express	0	525,000	100.00%	0	975,000	100.00%	8,172,463	100.00%
Republic Airways Holdings	1,116,000	72,312	-93.52%	1,178,000	1,002,312	-14.91%	22,030,624	523.39%
SkyWest (United Express)	24,115,485	24,000,098	-0.48%	76,570,704	69,493,896	-9.24%	294,259,374	-1.54%
Shuttle America (United Express)	2,024,736	1,735,488	-14.29%	8,894,376	2,458,608	-72.36%	10,557,552	-78.90%
Trans States	0	425,490	100.00%	0	2,425,293	100.00%	2,425,293	100.00%
US AIRWAYS	35,346,400	0	-100.00%	101,252,300	0	-100.00%	241,599,764	-36.73%
Mesa (US Airways Express)	0	0	0.00%	0	0	0.00%	0	0.00%
SkyWest (US Airways)	2,444,000	0	-100.00%	7,050,000	0	-100.00%	9,379,500	-62.60%
SUBTOTAL SCHEDULED CARRIERS:	1,073,705,574	1,104,964,301	2.91%	2,967,632,574	3,052,956,481	2.88%	12,253,682,542	1.74%
CHARTER CARRIERS								
ALLEGIAN AIR	0	0	0.00%	279,000	418,500	50.00%	1,652,500	-25.96%
BIGHORN AIRWAYS	0	0	0.00%	0	17,960	100.00%	71,080	13.76%
BUSINESS JET SOLUTIONS	201,100	0	-100.00%	806,200	0	-100.00%	129,350	-95.06%
CITATION SHARES	0	0	0.00%	0	0	0.00%	0	-100.00%
D&D AVIATION	73,200	109,900	50.14%	134,400	264,900	97.10%	915,640	39.88%
DELTA PRIVATE JETS	387,200	472,100	21.93%	1,297,050	1,672,050	28.91%	4,039,635	26.25%
EXECUTIVE JET MANAGEMENT	630,150	607,650	-3.57%	2,382,765	2,653,000	11.34%	5,361,015	9.47%
FLIGHT OPTIONS	672,930	306,525	-54.45%	2,001,315	1,284,620	-35.81%	4,384,980	-12.77%
KEYLIME AIR	550,462	0	-100.00%	1,521,334	158,620	-89.57%	3,248,352	-44.42%
NETJETS	3,592,945	4,269,760	18.84%	10,355,955	13,712,153	32.41%	31,918,373	28.16%
SIERRA PACIFIC	0	107,000	100.00%	105,000	107,000	1.90%	313,000	-63.09%
SUN COUNTRY	0	0	0.00%	0	0	0.00%	146,300	-75.00%
SWIFT AIR	0	363,000	100.00%	363,000	1,331,000	266.67%	2,744,925	353.71%
OTHER CHARTER	3,459,275	4,115,598	18.97%	10,601,978	14,380,829	35.64%	35,533,003	7.13%
SUBTOTAL CHARTER CARRIERS:	9,567,262	10,351,533	8.20%	29,847,997	36,000,632	20.61%	90,458,153	6.74%
CARGO CARRIERS								
ABX AIR (DHL)	0	0	0.00%	272,000	320,000	17.65%	592,000	-65.34%
AERO CHARTER & TRANSPORT	143,850	150,700	4.76%	424,700	431,550	1.61%	1,746,750	1.19%
AIR TRANSPORT INTERNATIONAL	5,505,000	54,000	-99.02%	14,446,000	0	-100.00%	33,115,000	-37.87%
AIRNET SYSTEMS	0	0	0.00%	0	0	0.00%	0	-100.00%
AMERIFLIGHT	4,394,300	4,655,000	5.93%	13,312,500	13,147,000	-1.24%	54,155,400	0.75%
CORPORATE AIR (BILLINGS)	875,500	1,020,000	16.50%	2,575,500	2,677,500	3.96%	10,803,500	1.84%
EMPIRE	650,790	695,445	6.86%	1,843,905	1,852,405	0.46%	7,528,740	0.26%
FEDEX EXPRESS	40,278,300	50,618,600	25.67%	118,792,200	133,109,200	12.05%	539,510,400	6.43%
UPS	27,427,360	29,470,960	7.45%	80,776,320	83,765,840	3.70%	372,296,140	9.08%
WESTERN AIR EXPRESS	186,000	376,500	102.42%	721,700	1,000,500	38.63%	3,898,300	-23.09%
OTHER CARGO	70,034	6,353,923	8972.63%	2,193,634	17,431,501	694.64%	29,370,972	892.74%
SUBTOTAL CARGO CARRIERS:	79,531,134	93,395,128	17.43%	235,358,459	253,735,496	7.81%	1,053,017,202	6.91%
TOTAL LANDINGS	1,162,803,970	1,208,710,962	3.95%	3,232,839,030	3,342,692,609	3.40%	13,397,157,897	2.16%

**SALT LAKE CITY INTERNATIONAL AIRPORT
CARGO ACTIVITY REPORT
THREE MONTHS ENDED MARCH 2016**

	March 2015	March 2016	CHANGE	YTD 2015	YTD 2016	CHANGE	12 MO ROLLING Ending 03/2016	% CHANGE
ENPLANED CARGO								
PASSENGER CARRIERS								
ALASKA	15,475	11,071	-28.46%	50,054	26,576	-46.91%	138,963	-23.10%
Horizon Air / Alaska	128	326	154.69%	1,121	539	-51.92%	2,089	-28.65%
Skywest / Alaska	409	1,641	301.22%	1,524	3,637	138.65%	10,131	24.86%
AMERICAN	15,055	39,838	164.62%	36,834	119,854	225.39%	347,837	481.75%
American Eagle/Republic	150	0	-100.00%	243	0	-100.00%	14,307	2515.54%
Compass	0	0	0.00%	0	0	0.00%	1,830	100.00%
Envoy Air (American)	0	157	100.00%	0	157	100.00%	861	-22.43%
SkyWest (American)	150	1,399	832.67%	175	1,399	699.43%	8,289	2248.16%
DELTA	957,736	701,196	-26.79%	2,845,007	2,165,526	-23.88%	9,937,013	-16.13%
SkyWest (Delta Connection)	0	0	0.00%	0	0	0.00%	0	0.00%
Mesaba Airlines (Delta Connection)	0	0	0.00%	0	0	0.00%	0	0.00%
Compass (Delta Connection)	0	0	0.00%	0	0	0.00%	0	0.00%
FRONTIER	0	0	0.00%	0	0	0.00%	0	0.00%
SOUTHWEST	320,144	491,315	53.47%	940,822	1,287,431	36.84%	4,565,899	27.65%
UNITED	3,531	5,214	47.66%	14,176	19,602	38.28%	79,321	3.94%
Express Jet	0	0	0.00%	0	0	0.00%	0	0.00%
SkyWest (Continental Express)	0	0	0.00%	0	0	0.00%	0	0.00%
US AIRWAYS	13,024	0	-100.00%	47,591	0	-100.00%	133,335	-39.47%
Mesa (US Airways Express)	0	0	0.00%	0	0	0.00%	0	0.00%
SkyWest (US Airways)	0	0	0.00%	0	0	0.00%	271	-67.39%
Others	0	0	0.00%	0	0	0.00%	50	100.00%
CARGO CARRIERS								
ABX AIR (DHL)	0	0	0.00%	0	16,001	100.00%	36,656	-57.54%
ASTAR (DHL)	0	0	0.00%	0	0	0.00%	0	0.00%
CAPITOL CARGO INT'L (DHL)	0	0	0.00%	0	0	0.00%	0	0.00%
FEDEX EXPRESS*	6,939,521	8,741,484	25.97%	20,812,434	24,341,372	16.96%	96,440,095	5.86%
GEM AIR	0	17,460	100.00%	0	30,060	100.00%	30,060	100.00%
SOUTHERN AIR	0	326,697	100.00%	0	968,988	100.00%	1,621,042	100.00%
UPS	3,595,424	3,763,314	4.67%	10,717,254	10,650,831	-0.62%	45,335,265	-0.74%
MISC CARGO	1,168,611	817,408	-30.05%	3,436,717	2,230,158	-35.11%	12,907,870	-9.52%
TOTAL ENPLANED CARGO	13,029,358	14,918,520	14.50%	38,903,952	41,862,131	7.60%	171,611,184	2.69%
DEPLANED CARGO								
PASSENGER CARRIERS								
ALASKA	32,811	14,783	-54.94%	66,844	38,808	-41.94%	230,551	-5.64%
Horizon Air / Alaska	2,181	30	-98.62%	3,882	204	-94.74%	7,537	-25.60%
Skywest / Alaska	2,055	2,361	14.89%	3,377	8,122	140.51%	27,224	346.51%
AMERICAN	9,759	34,287	251.34%	31,612	100,937	219.30%	268,540	238.31%
American Eagle/Republic	470	0	-100.00%	1,307	0	-100.00%	2,545	-60.01%
Compass	0	340	100.00%	0	340	100.00%	340	100.00%
Envoy Air (American)	0	0	0.00%	0	0	0.00%	177	704.55%
SkyWest (American)	260	0	-100.00%	273	236	-13.55%	701	93.65%
DELTA	1,202,206	1,130,017	-6.00%	3,386,725	3,257,764	-3.81%	14,165,568	4.27%
SkyWest (Delta Connection)	0	0	0.00%	0	0	0.00%	0	0.00%
Mesaba Airlines (Delta Connection)	0	0	0.00%	0	0	0.00%	0	0.00%
Compass (Delta Connection)	0	0	0.00%	0	0	0.00%	0	0.00%
FRONTIER	0	0	0.00%	0	0	0.00%	0	0.00%
SOUTHWEST	452,222	490,979	8.57%	1,352,865	1,305,827	-3.48%	5,295,036	-14.03%
UNITED	18,073	30,829	70.58%	48,344	73,262	51.54%	263,633	52.42%
Express Jet	0	0	0.00%	0	0	0.00%	0	0.00%
SkyWest	0	0	0.00%	0	0	0.00%	0	0.00%
US AIRWAYS	14,658	0	-100.00%	61,386	0	-100.00%	87,357	-67.24%
Mesa (US Airways Express)	0	0	0.00%	0	0	0.00%	0	0.00%
Skywest (US Airways)	650	0	-100.00%	1,922	0	-100.00%	976	-79.38%
KITTY HAWK CHARTERS	0	0	0.00%	0	0	0.00%	0	0.00%
Others	0	0	0.00%	0	0	0.00%	50	100.00%
CARGO CARRIERS								
ABX AIR (DHL)	0	0	0.00%	0	1,069	100.00%	47,165	-58.08%
ASTAR (DHL)	0	0	0.00%	0	0	0.00%	0	0.00%
CAPITOL CARGO INT'L (DHL)	0	0	0.00%	0	0	0.00%	0	0.00%
FEDEX EXPRESS*	6,097,402	7,147,993	17.23%	17,693,712	20,188,851	14.10%	81,321,383	10.74%
GEM AIR	0	17,421	100.00%	0	38,421	100.00%	38,421	100.00%
SOUTHERN AIR	0	427,705	100.00%	0	1,247,185	100.00%	2,317,115	100.00%
UPS	4,641,284	5,196,806	11.97%	13,916,843	14,354,373	3.14%	60,684,693	3.05%
MISC CARGO	927,914	403,670	-56.50%	2,640,377	1,073,970	-59.33%	8,575,610	-16.55%
TOTAL DEPLANED CARGO	13,401,945	14,897,221	11.16%	39,209,469	41,689,369	6.32%	173,334,622	6.18%
TOTAL CARGO	26,431,303	29,815,741	12.80%	78,113,421	83,551,500	6.96%	344,945,806	4.42%

*FEDEX EXPRESS includes mail



Salt Lake City
Department of Airports

COMPARISON OF ON TIME OPERATIONS
MARCH 2016

ARRIVALS

Airport	Flights	% On Time	Rank
ATL HARTSFIELD-JACKSON ATLANTA INTL	32,886	88.7	1
CLT CHARLOTTE DOUGLAS	9,343	87.9	2
IAD WASHINGTON DULLES	2,642	87.1	3
SLC SALT LAKE CITY INTL	9,534	86.5	4
MSP MINNEAPOLIS-ST. PAUL INTL	10,840	86.4	5
PHX PHOENIX SKY HARBOR INTL	14,445	85.4	6
BWI BALTIMORE/WASHINGTON INTL	7,838	84.9	7
CVG CINCINNATI NORTHERN INT. KY	1,424	84.7	8
MDW CHICAGO MIDWAY	7,330	84.4	9
SEA SEATTLE-TACOMA INTL	10,276	84.4	10
DTW DETROIT METRO WAYNE CNTY	10,504	84.3	11
PDX PORTLAND INTL	4,616	83.8	12
PHL PHILADELPHIA INTL	6,069	83.3	13
STL ST. LOUIS LAMBERT INTL	4,645	83.0	14
LAS LAS VEGAS MCCARRAN INTL	12,734	82.1	15
DCA RONALD REAGAN NATIONAL	6,753	81.9	16
SAN SAN DIEGO LINDBERGH FIELD	6,447	81.9	17
BOS BOSTON LOGAN INTL	9,927	81.8	18
IAH HOUSTON GEORGE BUSH	11,769	81.3	19
ORD CHICAGO O HARE	19,913	81.3	20
EWR NEWARK LIBERTY INTERNATIONAL	9,724	80.4	21
JFK NEW YORK JFK INTL	8,551	80.3	22
DEN DENVER INTL	19,104	79.6	23
TPA TAMPA INTL	6,827	79.3	24
DFW DALLAS-FT. WORTH REGIONAL	17,035	78.8	25
LAX LOS ANGELES INTL	17,305	78.3	26
MCO ORLANDO INTL	11,752	77.4	27
MIA MIAMI INTL	6,213	76.3	28
FLL FT. LAUDERDALE	8,075	74.9	29
LGA NEW YORK LAGUARDIA	8,302	70.5	30
SFO SAN FRANCISCO INTL	14,255	65.6	31
AVERAGES	10,551	81.50	

DEPARTURES

Airport	Flights	% On Time	Rank
SLC SALT LAKE CITY INTL	9,530	87.6	1
PDX PORTLAND INTERNATIONAL	4,615	87.4	2
MSP MINNEAPOLIS-ST. PAUL INTL	10,845	87.2	3
CLT CHARLOTTE DOUGLAS	9,346	87.1	4
SEA SEATTLE-TACOMA INTL	10,288	86.4	5
CVG CINCINNATI NORTHERN INT. KY	1,426	86.0	6
IAD WASHINGTON DULLES	2,636	85.7	7
ATL HARTSFIELD-JACKSON ATLANTA INTL	32,894	85.4	8
DCA RONALD REAGAN NATIONAL	6,753	85.4	9
PHX PHOENIX SKY HARBOR INTL	14,443	85.1	10
BOS BOSTON LOGAN INTERNATIONAL	9,927	84.5	11
PHL PHILADELPHIA INTL	6,068	84.2	12
DTW DETROIT METRO WAYNE CNTY	10,505	83.8	13
STL ST. LOUIS LAMBERT INTL	4,645	83.4	14
SAN SAN DIEGO LINDBERGH FIELD	6,449	82.2	15
BWI BALTIMORE/WASHINGTON INTL	7,839	82.1	16
EWR NEWARK LIBERTY INTERNATIONAL	9,706	82.0	17
IAH HOUSTON GEORGE BUSH	11,780	81.5	18
TPA TAMPA INTERNATIONAL	6,824	80.8	19
JFK NEW YORK JFK INTL	8,545	80.7	20
LAS LAS VEGAS MCCARRAN INTL	12,731	80.7	21
MDW CHICAGO MIDWAY	7,327	80.6	22
ORD CHICAGO O HARE	19,904	78.6	23
MCO ORLANDO INTL	11,748	78.4	24
LAX LOS ANGELES INTL	17,304	77.4	25
LGA NEW YORK LAGUARDIA	8,302	77.4	26
DEN DENVER INTERNATIONAL	19,088	77.2	27
DFW DALLAS-FT. WORTH REGIONAL	17,044	76.6	28
FLL FT. LAUDERDALE	8,071	76.6	29
MIA MIAMI INTL	6,217	76.0	30
SFO SAN FRANCISCO INTL	14,259	71.8	31
AVERAGES	10,550	81.93	

ON TIME ARRIVAL PERFORMANCE AT SLC

By Carrier

Air Carrier	Flights	% On Time
DL DELTA	3,430	89.8%
AS ALASKA	182	87.9%
OO SKYWEST	4,189	87.4%
AA AMERICAN	405	82.0%
UA UNITED	231	79.7%
F9 FRONTIER	130	79.2%
WN SOUTHWEST	830	75.9%
B6 JETBLUE	136	71.3%
EV EXPRESSJET	1	0.0%
AVERAGES	9,534	86.5%

Source: DOT Air Travel Consumer Report

DESIGN AND CONSTRUCTION REPORT

TABLE OF CONTENTS

- I. Area Map of Project Locations
- II. Project Schedule
- III. Construction Analysis
- IV. Design and Construction Report



Salt Lake City
International Airport

2015 - 2016 Project Legend

Airfield

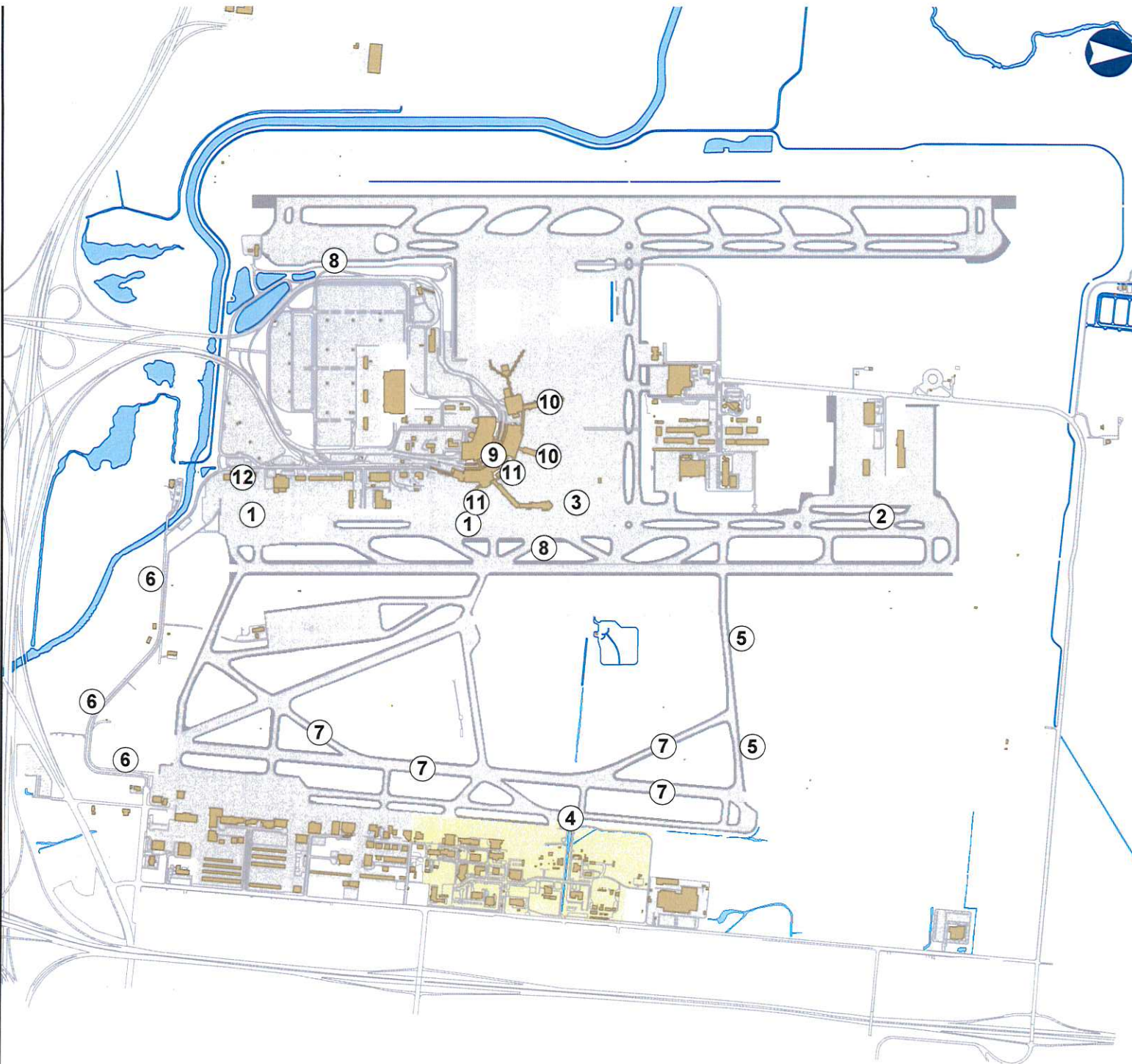
1. Deicing Pad 34R
2. Deicing Pad R/W 16L
3. Apron Mast Lighting
4. Rebuild Pump House 6
5. T/W S Pavement Reconstruction
6. Asphalt Overlay Program Phase 10
7. R/W 17-35 and T/W P & R Pavement Rehabilitation
8. R/W 34L & 34R Glycol Pump Station Diversion Valves

Terminal

9. Replace Boiler No. 4
10. Concourse C & D IT Node
11. Roof Replacements (Terminal Area)

Landside

12. Airport Operations Center



SALT LAKE CITY INTERNATIONAL AIRPORT
CONSTRUCTION PROGRAM
2015/2016 Construction Schedule

ID	Task Name	Start	Finish												
				Dec '15	Jan '16	Feb '16	Mar '16	Apr '16	May '16	Jun '16	Jul '16	Aug '16	Sep '16		
1	Airfield	Thu 10/18/12	Fri 11/25/16												
2	(1) Deicing Pad 34R	Thu 10/18/12	Thu 6/30/16												
3	(2) Deicing Pad R/W 16L	Mon 10/6/14	Fri 11/25/16												
4	(3) Apron Mast Lighting	Thu 3/26/15	Mon 4/25/16												
5	(4) Rebuild Pump House 6	Wed 7/8/15	Mon 5/30/16												
6	(5) Taxiway S Pavement Reconstruction	Mon 4/25/16	Mon 7/25/16												
7	(6) Asphalt Overlay Program Phase 10	Mon 5/2/16	Mon 6/6/16												
8	(7) R/W 17-35 & T/W's P & R Pavement Rehabilitation	Mon 6/6/16	Wed 10/12/16												
9	(8) R/W 34L & 34R Glycol Diversion Valves	Wed 6/1/16	Fri 9/30/16												
10	Terminal	Mon 7/27/15	Tue 8/9/16												
11	(9) Replace Boiler No. 4	Mon 7/27/15	Tue 8/9/16												
12	(10) Concourse C & D IT Node	Thu 2/4/16	Tue 5/17/16												
13	(11) Roof Replacements (Terminal Area)	Wed 6/1/16	Fri 8/5/16												
14	Landside	Wed 6/1/16	Tue 8/1/17												
15	(12) Airport Operations Center	Wed 6/1/16	Tue 8/1/17												

Date: Tue 5/17/16

Design
Construction

DESIGN



SCOPING



Deadline



CONSTRUCTION



SUMMARY



SALT LAKE CITY DEPARTMENT OF AIRPORTS
CONSTRUCTION PROJECT STATUS 2015 - 2016

#	PROJECT NAME	ENGINEER'S ESTIMATE	BID AMOUNT	APPROVED CHANGE ORDERS TO DATE	% OF COST INCREASE TO DATE	STATUS	CONTRACTOR
CONSTRUCTION							
1	Deicing Pad 34R	\$ 32,636,278	\$ 30,713,449	\$ 1,837,115	5.98%	sub. comp.	Wadsworth Brothers Const.
2	Deicing Pad R/W 16L	\$ 27,398,981	\$ 29,645,774	\$ 10,141	0.03%	on schedule	Granite Construction
3	Apron Mast Lighting Replacement	\$ 1,733,033	\$ 1,733,300	\$ (25,158)	-1.45%	on schedule	All-Tech Electric
4	Rebuild Pump House 6	\$ 404,300	\$ 448,933			on schedule	JL Hardy Construction
5	Taxiway S Pavement Reconstruction	\$ 4,414,000	\$ 4,260,195			on schedule	Geneva Rock Products
6	Asphalt Overlay Program Phase 10	\$ 623,963	\$ 493,984			on schedule	Geneva Rock Products
9	Replace Boiler No. 4	\$ 634,435	\$ 608,000	\$ 137,811	22.67%	on schedule	Mechanical Service & Systems
10	Concourse C & D IT Node	\$ 301,800	\$ 308,800	\$ 17,854	5.78%	complete	AIS Commerical
12	Airport Operations Center	\$ 15,000,000	\$ 16,515,000			on schedule	Big D Construciton
	Sub Total	\$ 83,146,790	\$ 84,727,435	\$ 1,977,763	2.33%		
DESIGN/BID/AWARD PHASE							
7	R/W 17-35 7 T/W's P & R Pavement Rehabilitation	\$ 11,525,000	\$ 9,871,843			award	Staker Parsons Company
8	R/W 34L & 34R Glycol Diversion Valves	\$ 522,671	\$ 708,056			award	VanCon, Inc.
11	Roof Replacements (Terminal Area)	\$ 249,000	\$ 295,000			award	Conwest, Inc.
	Sub Total	\$ 12,047,671	\$ 10,579,899				
	Total	\$ 95,194,461	\$ 95,307,334	\$ 1,977,763	2.08%		
Budget amount, Engineer's estimate, and Bid amount is based on construction cost only.							

DESIGN AND CONSTRUCTION REPORT

DESIGN/BID/AWARD

- (7) **Runway 17-35 and Taxiways P & R Pavement Rehabilitation** - This project will remove and replace 3-inches of bituminous pavement over the entire length and width of Runway 17-35, the intersecting taxiways up to the hold short lines, and the high speed Taxiways P & R. The existing centerline light fixtures, touch-down zone light fixtures, extensions, and spacer rings will be removed before cold milling the existing asphalt wearing surface. After paving, new extension rings and light fixtures will be installed. New runway edge lights will also be replaced as required to meet current FAA photometric standards. Other incidental work includes grooving the new asphalt surface and repainting. The bid opening for this project was held on May 12, 2016. The apparent low bidder is Staker Parsons Company. Bid documents are currently under review by SLCDA.
- (8) **Runway 34L & 34R Glycol Diversion Valves** - This project will include design and installation of new automated diversion valves at the glycol pump stations for Runways 34L & 34R. Work will include installation of new HDPE piping, an underground valve vault, installation of new storm water/glycol sensors, automated controls, and electrically actuated butterfly valves. The bid opening for this project was held on May 12, 2016. The apparent low bidder is VanCon, Inc. Bid documents are currently under review by SLCDA.
- (11) **Roof Replacements (Terminal Area)** - This project will replace existing membrane roofs on the Boiler Plant, Concourse A, and the C-D Connector. Work will include removal of the existing roofing membrane, installation of new roofing membrane, flashings, and other appurtenances. The bid opening for this project was held on May 5, 2016. The apparent low bidder is Conwest, Inc. Contract documents are currently being prepared.

CONSTRUCTION

- (1) **Deicing Pad 34R** - Punch list items and warranty work will begin the end of May 2016.
- (2) **Deicing Pad R/W 16L** - Taxiway H13 is now closed to allow the Contractor to continue with the construction of the deicing pad. The Contractor has completed placement of PCC pavement for Phase 2 and is now in the process of placing granular fill on the shoulders. The electrical subcontractor is also on-site installing in-pavement lighting fixtures and airfield location signs.
- (3) **Apron Mast Lighting Replacement** - Substantial completion for this project was issued on March 24, 2016. The Contractor is currently working on punch list items.
- (4) **Rebuild Pump House 6** - The Contractor has completed construction of the new walls, installation of the roof and the pumps. Installation of the electrical panels will begin next week.
- (5) **Taxiway S Pavement Rehabilitation** - The Contractor is currently excavating and placing underdrains along the north and south edges of the full strength pavement. Placement of a new 4" diameter 6-way concrete encased duct bank across the taxiway for a future deicing project will start this week. The Contractor will begin placing 15" RCP pipe for the new drain line the week of May 23, 2016.
- (6) **Asphalt Overlay Program Phase 10** - The Contractor is currently working inside security on the south perimeter service road excavating for full depth road repairs. Paving of the inside and outside of the service roads will begin this week.
- (9) **Replace Boiler No. 4** - Piping installation work has been completed. The delivery date of the new boiler is anticipated for May 20, 2016.

- (10) **Concourse C & D IT Node** - A final walk-through for Concourse D was held on May 17, 2016. The Contractor is working on punch list items.
- (12) **Airport Operations Center** - The Contractor, Big D Construction was issued a notice to proceed on May 11, 2016. Mobilization is currently taking place. Submittals are being prepared for review by SLCDA.



Salt Lake City
Department of Airports

**May 2016
Media Clippings**

Advisory Board Meeting

<https://slairport.com/assets/pdfDocuments/MediaPacket.pdf>

SLCDA Airport Advisory Board May 2016

Date	Media Outlet	Subject
4/25/2016	Deseret News	Airport food donated to SL Mission
4/25/2016	KSL TV and Radio	Airport food donated to SL Mission
4/25/2016	ABC4	London flight launches
4/25/2016	KUTV2News	London flight launches
4/25/2016	KSL	London flight launches
4/25/2016	FOX13	London flight launches
4/27/2016	KSL TV and Radio	JetBlue contest-SLC polling in 2nd place
4/28/2016	ABC4	Airport food donated to SL Mission
4/28/2016	The Salt Lake Tribune	TRP
4/28/2016	The Salt Lake Tribune	TSA
4/28/2016	The Salt Lake Tribune	Wingpointe
5/2/2016	KUTV2News	South Valley Regional Airport
5/3/2016	Travel Agent Central	KLM enters Salt Lake market
5/3/2016	ABC4	South Valley Regional Airport
5/3/2016	KUTV2News	North Concourse announced
5/3/2016	Deseret News	North Concourse announced
5/3/2016	FOX13	North Concourse announced
5/3/2016	KSL Radio	No. Concourse & Road Construction
5/3/2016	KUTV2News	TSA & Airport lost and found
5/4/2016	The Salt Lake Tribune	South Valley Regional Airport
5/4/2016	Deseret News	South Valley Regional Airport
5/4/2016	ABC4	South Valley Regional Airport
5/4/2016	Airport Technology.com	North Concourse announced
5/4/2016	The Salt Lake Tribune	North Concourse announced
5/4/2016	KUER	North Concourse announced
5/5/2016	The Salt Lake Tribune	South Valley Regional Airport
5/5/2016	Associated press	North Concourse announced
5/6/2016	The Salt Lake Tribune	KLM enters Salt Lake market
5/6/2016	Deseret News and KSL TV	KLM enters Salt Lake market
5/6/2016	KUER	South Valley Regional Airport
5/9/2016	Jane's Airport Review	North Concourse announced
5/9/2016	KUTV2News	Road Construction
5/9/2016	CW30	Road Construction
5/9/2016	The Salt Lake Tribune	Letter to editor: Wingpointe
5/10/2016	Airport Word	North Concourse announced
5/10/2016	Airport Improvement	North Concourse announced
5/10/2016	The Salt Lake Tribune	Road Construction
5/10/2016	ABC4	Road Construction
5/10/2016	KSL TV and Radio	Road Construction
5/10/2016	FOX13	Road Construction
5/10/2016	ABC4	Road Construction
5/10/2016	Deseret News	Wingpointe
5/10/2016	ABC4	Smoking rooms

5/10/2016	The Salt Lake Tribune	Concessionaires not in compliance
5/10/2016	Emery County Progress	Airport air quality studies
5/11/2016	Deseret News	Wingpointe-Council meeting
5/12/2016	Anna Aero	KLM enters Salt Lake market
5/13/2016	Deseret News	Editorial: Salt Lake City TRP
5/19/2016	City Weekly	Summer vacations
5/19/2016	Napa Valley Register	Gorton Huether
5/19/2016	KUTV2News	Wingpointe
5/19/2016	The Salt Lake Tribune	Utah Air National Guard