

DEPARTMENT OF AIRPORTS  
BOARD MEETING

19 April 2017

AGENDA



Salt Lake City  
Department of Airports

**SALT LAKE CITY DEPARTMENT OF AIRPORTS  
BOARD MEETING AGENDA**

19 April 2017  
8:00 A.M.

CONSENT AGENDA

- A. Minutes of the 15 March 2017 Meeting

DISCUSSION ITEMS

- B. Director's Report – Maureen Riley, Executive Director, SLCDA  
C. Terminal Redevelopment Program (TRP) Update – Mike Williams, TRP Director, SLCDA  
D. Airport Service Quality (ASQ) Survey Results – Nancy Volmer, Public Relations & Marketing Director, SLCDA  
E. Discussion of Rules and Regulations for Conduct of the Airport Advisory Board – J.T. Martin, Airport Advisory Board Chair  
F. Other Possible Discussion Item – General Aviation

INFORMATION ITEMS

- A. Financial Report – February 2017  
B. Air Traffic Statistics – February 2017  
C. Comparison of On-Time Operations – January 2017  
D. Construction Report – April 2017  
E. Media Clippings – April 2017

The next meeting will be held on **Wednesday, May 17, 2017**, at 8:00 a.m. Meetings are held in the Board Room located on the third level of the short-term parking garage. People with disabilities may make requests for reasonable accommodations no later than 48 hours in advance in order to attend this Airport Board Meeting. Accommodations may include alternate formats, interpreters, and other auxiliary aids. This is an accessible facility. For questions or additional information, please contact LuJean Christensen at 801-575-2096.

DEPARTMENT OF AIRPORTS  
BOARD MEETING

19 April 2017

MINUTES

# SALT LAKE CITY DEPARTMENT OF AIRPORTS MINUTES OF ADVISORY BOARD MEETING

15 March 2017

Members Present: J.T. Martin, Chair  
Larry Pinnock, Vice-Chair  
Igor Best-Devereux  
Wade Bitner  
Mickey Gallivan  
Natalie Gochnour  
Sam Granato  
Karen Mayne  
Cyndy Miller  
Kim Rolfe

Mayor's Office: Mayor Jacqueline M. Biskupski

Department of Airports: Kevin Robins, Executive Director Designee  
John Buckner, Director of Administration & Commercial Services  
Ed Cherry, Chief Information Officer  
LuJean Christensen, Management Support Coordinator  
Eddie Clayson, Director of Maintenance  
Kristen Elder, Management Analyst  
Pete Higgins, Director of Operations  
Marco Kunz, Attorney  
Allen McCandless, Director of Planning  
Ryan Tesch, Director of Finance  
Craig Vargo, Police Chief  
Nancy Volmer, Director of Public Relations & Marketing  
Mike Williams, TRP Program Director

Chair J.T. Martin called the meeting to order at 8:00 a.m.

Martin recognized Representative Kim Coleman and thanked her for her attendance and support.

Martin asked members of the Board to watch their e-mail for messages regarding a suggested retreat for Board members and other stakeholders.

## AGENDA

### A. Minutes

The motion was made by Cyndy Miller and seconded by Igor Best-Devereux to approve the minutes of February 15, 2017 as presented. All votes were affirmative; motion passed.

## **B. Director's Report**

Kevin Robins, Executive Director Designee, updated the Airport Advisory Board regarding current events.

- Robins reported that the President's new travel ban will go into effect at midnight. The Airport does not expect to have any detained travelers and contingency plans are in place to handle potential demonstrations.
- Robins announced the addition of several new flights. United recently added a nonstop flight to Newark, and Southwest has added nonstop flights to Burbank and Sacramento. In December, Delta will begin nonstop flights to Tampa and Maui. KLM resumes its service to Amsterdam on March 26<sup>th</sup>, upgrading from an Airbus 330 to a Boeing 787-900—the first time SLC has had a Dreamliner operating here regularly. Delta has also upgraded the aircraft used for its flight to Amsterdam from a Boeing 767 to an Airbus 330. The Airport continues to make contingency plans for hard standing aircraft if needed.

Martin welcomed Mayor Biskupski and asked if she would like to make any comments. Mayor Biskupski asked for due diligence in analyzing the proposed budget for FY 2018.

## **C. Terminal Redevelopment Program Update**

Mike Williams, Terminal Redevelopment Program (TRP) Director, presented an update on the TRP (presentation on file). Main points included were:

- CGMP #3 – South Parking Lot/Quick Turn-Around/Remote Service Sites current status
- CGMP #4 – Landside and Airside Enabling status
- CGMP #5 – Terminal/South Concourse West/Gateway status
- CGMP #6 – Roadways/Parking Garage/Central Utility Plant status
- CGMP #7 – Baggage Handling System status
- North Concourse Project status
- Overall program construction and paving sequence
- Near term schedule
- Overall capital program costs

Senator Karen Mayne wondered how far into the future the current TRP will meet our needs. Robins estimated at least five years, as passenger growth is exceeding our projections. Expansion of the terminal may be necessary to enlarge the baggage handling system if the additional gates on the North Concourse are built.

Senator Mayne asked if the Airport has enough land to build additional concourses. Robins explained that we have enough land to build a total of four concourses, although it would require the relocation of the North Support facilities. When the master plan is updated, it will address whether or not we need to plan for a fourth concourse if the passenger growth we're now

experiencing continues. Williams reminded the Board that 15 gates can be added to the North Concourse if the airlines and the Airport choose to do so at a later date.

Senator Mayne questioned whether contractors are audited for purchasing or safety requirements. Williams replied that there are many on-site requirements related to safety, certifications which must be signed when the bid is awarded, and that the Department of Labor periodically audits these types of projects. Robins stated that our contract gives us the right to perform an audit if there is a problem.

Best-Devereux asked if the North Concourse Project (NCP) would be designed within the \$737M estimate. Williams answered that this preliminary estimate was created over 18 months ago. Since that time, the airlines have asked for changes which the Airport has agreed are in the best interest of the project. Although the revised estimate will likely be higher, we are meeting frequently with the designer to maintain accountability.

Best-Devereux requested information about the selection process of the Construction Manager at Risk (CMAR) for the NCP. Robins explained that the selection committee is composed of Airport and Mayor's staff and consultants with related experience. Three respondents to the Request for Statement of Qualifications were interviewed and ranked by the selection committee. The Airport is currently negotiating contract terms with the top-ranked firm and expects to make an announcement within a few weeks.

Best-Devereux inquired about Board involvement in the procurement process in the future. Robins noted that the Board is not typically involved in the procurement process, and Martin suggested that the Board consult with the Mayor about what level of involvement would be appropriate.

Martin asked Larry Pinnock to give a summation of yesterday's meeting of the General Aviation Subcommittee.

Pinnock reported that the General Aviation Subcommittee is looking at a number of different options to expand the hangar space at South Valley Regional Airport (SVR). The Subcommittee will also refine the scope of an upcoming study to look at new ideas and best practices to support our general aviation community.

#### **D. Airport Budget for FY 2018**

Ryan Tesch, Director of Finance, SLCD, presented an update on the Airport budget for FY 2018 (presentation on file). Main points included were:

- Budget goals and objectives
- Operating statement forecast
- Comparison of airline revenues
- Cost Per Enplaned Passenger (CPE)
- Comparison of concession revenues
- Operating expenses for FY 2018

- New Capital Improvement Projects for FY 2018

Mayor Biskupski asked why a 3% salary increase was assumed for FY 2018. Tesch answered that this figure is historically what has been budgeted. Mayor Biskupski then questioned whether the Airport was covering the medical insurance increases for its employees, if the 3% salary increase was in addition to the insurance costs, and if there are situations where airport salary increases are treated differently than other Salt Lake City employees. Tesch answered in the affirmative.

Natalie Gochnour asked if cost of living adjustments matched other departments within the City. Tesch explained that the 3% assumption included two components, cost of living adjustments and merit raises. The Airport does not have a standard pay rate increase for non-represented employees. Pay increases for these employees are merit-based and require a detailed performance evaluation process. Robins added that because the Airport begins the budget process earlier than other City departments, assumptions were made based upon what was approved last year.

Senator Mayne inquired if the 3% budgeted for salary increases was used for bonuses and if the Airport issued bonuses. Robins answered in the negative.

Martin wondered if the proposed 3% salary increase would be given to Airport employees in addition to any City-wide increase issued by the Mayor and the City Council. Robins answered in the negative.

Miller complimented Robins for his efforts as interim executive director and Tesch for a complete presentation of the proposed FY 2018 budget.

Miller reported that the Finance Subcommittee met on March 14, 2017 for a detailed review of the proposed FY 2018 budget. The Subcommittee has asked Airport staff to e-mail additional information to the Board on the following areas: intergovernmental charges, utilities, additional technology or other enhancements, and the effects of running the SVR FBO in-house.

Miller recommended to the Board that the proposed FY 2018 budget be forwarded to the Mayor's office subject to the clarification of the aforementioned items. Miller also suggested that a finance and audit subcommittee be formed, and that the presentation of the budget be made at least 10 days before an Advisory Board meeting to allow time for Airport staff to respond to any questions.

The motion was made by J.T. Martin to advance the FY 2018 budget to the Mayor with the stipulation that the Board receive additional information about the items previously mentioned. All votes were affirmative; motion passed.

The motion was made by J.T. Martin to form a finance and audit subcommittee that would meet at least 10 days prior to the Board receiving the budget and to meet quarterly on other matters. All votes were affirmative; motion passed.

Miller proposed discussion on the formation of a TRP and capital committee to review the project in greater detail and to have an opportunity to ask questions as contracts are reviewed and awarded. Senator Mayne stated her support of Miller's recommendation. Martin recommended that the Board obtain additional information from the Airport administration prior to making a motion.

#### **E. Concessions Program Outreach**

John Buckner, Director of Administration & Commercial Services, SLCDA, presented an update on the concessions program outreach (presentation on file). Main points included were:

- Public overview of concessions at the Airport
- Passengers/sales comparison 2013-2016
- Hours of operation
- Staffing requirements – employee badging
- Staff transportation and parking
- Product deliveries
- Construction costs
- Rent
- Airport Concessions Disadvantaged Business Enterprise (ACDBE) introduction
- Timeframes
- Possible business arrangements
- Upcoming opportunities
- Request for Proposals (RFP)

Gochnour asked for clarification of the term "bank." Buckner explained that a bank is a swell of passengers in the terminal when several planes land, exchange passengers, and depart in a short time period. The number and duration of banks vary by location and airline.

Senator Mayne inquired about an average or standard wage for concession employees. Buckner replied that he is not aware of a standard, but the average wage is about \$12/hour.

Senator Mayne asked where concession employees park. Buckner answered that they park in a secure lot north of the golf course at a cost of \$24/month per employee. Senator Mayne asked who pays the employee parking fee. Buckner replied that most employers pay that fee on behalf of the employee as a benefit. This fee covers our operating cost and investment in the lot.

Martin asked which existing concessionaires fall under the ACDBE umbrella. Buckner stated that these include Jamba Juice, Krispy Kreme, Fresh Market, Auntie Anne's, the shoe shine vendor, and Red Onion. Approximately 15-16% of our total sales are generated by ACDBE concessionaires.

Miller inquired about the Airport's goal for ACDBE revenues. Buckner reported that our goal has been established at 12% of total sales.



Miller requested the maximum gross revenues a company can generate and maintain DBE status. Buckner noted that he would follow-up with the Board via e-mail once he confirmed the correct figure.

Mickey Gallivan wondered if any of the existing concession leases will carry over to the new terminal. Buckner answered in the negative, adding that the Airport intentionally did not want to give any concession a first right in the new terminal.

Best-Devereux asked for more information about the target audience of the public outreach process. Buckner explained that the Airport is reaching out to businesses who have previously expressed interest in operating at the Airport. The Airport is also meeting with existing concessionaires to review timelines.

Gochnour remarked on the significant local business participation in the Airport's existing concessions program, and asked if this was the result of intentional planning. Buckner stated that the number of local business participating in the program was market-driven. Today's outreach process is more robust, with the goal to maximize opportunities for local, national and regional brands to participate.

Mayor Biskupski asked if the Airport is working with the City's Department of Economic Development on the public outreach process. Buckner responded in the negative and agreed to collaborate with the Department at the Mayor's request.

Senator Mayne asked how many concession locations will be available in the TRP. Buckner replied that it would be approximately 100-120, depending upon the design of the North Concourse.

Martin thanked the Mayor and other Board members in attendance for their attendance and encouraged them to review the media clippings in the Board packet.

The next Board meeting will be held on April 19, 2017.

J.T. Martin adjourned the meeting at 9:28 a.m.

\_\_\_\_\_  
J.T. Martin, Chair

\_\_\_\_\_  
Date

\_\_\_\_\_  
Jacqueline M. Biskupski, Mayor

\_\_\_\_\_  
Date

DEPARTMENT OF AIRPORTS  
BOARD MEETING

19 April 2017

DISCUSSION ITEMS

## SALT LAKE CITY AIRPORT BOARD

**AGENDA:** DISCUSSION ITEM (B)  
**DATE:** 19 April 2017  
**TO:** Airport Board  
**FROM:** Maureen Riley, Executive Director  
**SUBJECT:** **Executive Director's Report**

---

Maureen Riley will present a monthly informational report to the Board, including:

1. TRP progress
2. Ground transportation update

Other discussion items may include:

1. Concessions and rental cars
2. Airport safety and security
3. Airport facilities and operations
4. General aviation
5. Passenger and airport users
6. Environmental matters
7. Financial condition
8. Legislative issues
9. Airlines
10. Communications and marketing

## SALT LAKE CITY AIRPORT BOARD

**AGENDA:** DISCUSSION ITEM (C)  
**DATE:** 19 April 2017  
**TO:** Airport Board  
**FROM:** Maureen Riley, Executive Director  
**SUBJECT:** **Terminal Redevelopment Program Update**

---

Mike Williams, Terminal Redevelopment Program (TRP) Director, will present an update on the SLC Terminal Redevelopment Program (presentation on file).

# ***SLC Redevelopment Program***

***Status Update: 04-19-2017***



**Salt Lake City International Airport**



# CGMP# 3 – South Parking Lot/QTA/RSS

Project: CGMP# 3 - South Parking Lot/QTA/RSS/Civil Ph 1

Budget: \$94.00M EAC: \$88.72M

South Parking Lot Replacement Parking, Civil Enabling, East Lift Station, New Rental Car Quick Turn-Around (QTA) and Remote Service Sites (RSS)

		Current Status
Schedule		Recent Milestones Achieved
Activity	Target Date	
Substantial Completion	Feb 2016 A	* Received Final Close-out Documents for Review
Fully Operational	Mar 2016 A	
Commission East Lift Station	Nov 2016 A	
Complete Requested Tenant Scope	Dec 2016 A	
CGMP 03 Close-out Complete	APR 2017	
Concerns/Issues/Risks		
* None		



# CGMP# 4 – Landside and Airside Enabling

Project: CGMP# 4 - Landside and Airside Enabling

Budget: \$81.09M EAC: \$81.00M

Terminal/South Concourse West/Gateway/Roadways/Airside and Landside Enabling and Central Utility Plant Hydronic Piping

## Current Status

### Schedule

### Recent Milestones Achieved

Activity	Target Date	
Complete Seq 2 Tunnel Excavation	Dec 2016 A	* Utility Work Proceeding on Schedule
Complete SCW Surchage	Dec 2016 A	* Started Excavate/Dewater Mid-Concourse Tunnel
Complete West Lift Station Pumps	Mar 2017 A	* Exposed End of Mid-Concourse Tunnel
Complete SCW Ductbank	Mar 2017 A	
Complete Gateway Hydronic Piping	Apr 2017	
Substantial Completion	Jul 2017	

### Concerns/Issues/Risks

\* Mid-Concourse Tunnel Settlement



# CGMP# 5 – Terminal/South Concourse West/Gateway

Project: CGMP# 5 - Terminal/Gateway/South Concourse West    Budget: \$795.35M    EAC: \$795.35M

Terminal/Gateway/South Concourse West - Foundations, Structure, Building Envelope and Build-out

## Current Status

### Schedule

### Recent Milestones Achieved

Activity	Target Date
Start Driven Piles	Dec 2016 A
Complete Terminal Tunnel Backfill	Sep 2017
Complete SCW Slab on Grade	Sep 2017
Complete SCW Structural Steel	Nov 2017
Complete Terminal Foundations	Feb 2018
Complete Terminal Structural Steel	Jul 2018

- \* Started Tunnel Concrete Mat Slab
- \* Awarded Drywall Scope of Work
- \* Completed SCW Driven Piles

### Concerns/Issues/Risks

- \* Complete Terminal Tunnel Concrete Lid Timely





# CGMP# 6 – Roadways/Parking Garage/Central Utility Plant

Project: CGMP# 6 - Parking Garage/Roadways/Central Utility Plant/Project-Wide Special Systems

Budget: \$363.86M EAC: \$363.86M

Parking Garage/Rental Car Ready Return/Elevated and At-Grade Roadways/Central Utility Plant/Project-Wide IT and Special Systems

## Current Status

Schedule		Recent Milestones Achieved
Activity	Target Date	
Issue NTP	Dec 2016 A	* Initiated Parking Garage Underground Utility Work
Start Central Utility Plant Concrete	Feb 2017 A	* Initiated Parking Garage Driven Piles
Start Parking Garage Driven Piles	Mar 2017 A	* Initiated Central Utility Plant Concrete
Complete CUP Chiller Installation	Dec 2017	
CUP Operational	Mar 2018	
Parking Garage Roofing Complete	Aug 2019	

### Concerns/Issues/Risks

\* Potential for Additional Rental Car Ready Return Level Requested Scope



# CGMP# 7 – Baggage Handling System

**Project: CGMP# 7 - Baggage Handling System including TSA Screening Area**

**Budget: \$86.09M EAC: \$86.09M**

**Terminal/Gateway/South Concourse West and TSA Screening Area Complete Baggage Handling System IT and Special Systems**

**Current Status**

**Schedule**

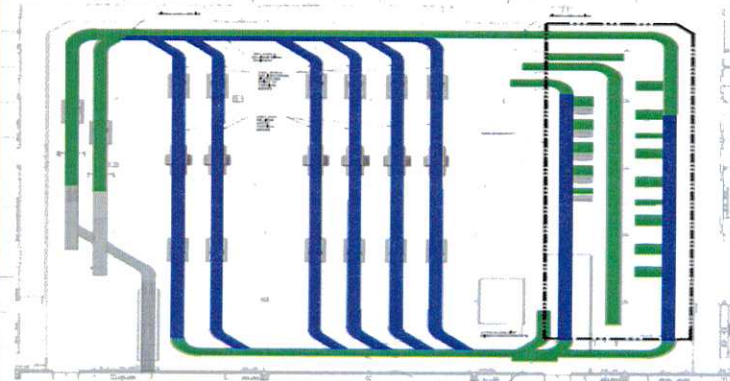
**Recent Milestones Achieved**

Activity	Target Date
Issue NTP	Sep 2016 A
Start BHS Hanger Installation	Aug 2017
Install TSA Provided Equipment	Jun 2019
Start BHS Testing and Commissioni	Nov 2019
Start TSA BHS Acceptance Testing	Mar 2020
BHS Substantial Completion	May 2020

- \* Initial Three Invoices Approved for Payment by TSA.
- \* Initiated BIM Coordination Sessions with MEP.
- \* Finalized South Concourse Conveyor Cross-Over .

**Concerns/Issues/Risks**

\* None



# North Concourse Project

Project: North Concourse Project

Budget: \$737 EAC: TBD

North Concourse Phase 1 and Phase 2 and Associated Airfield Scope of Work

## Current Status

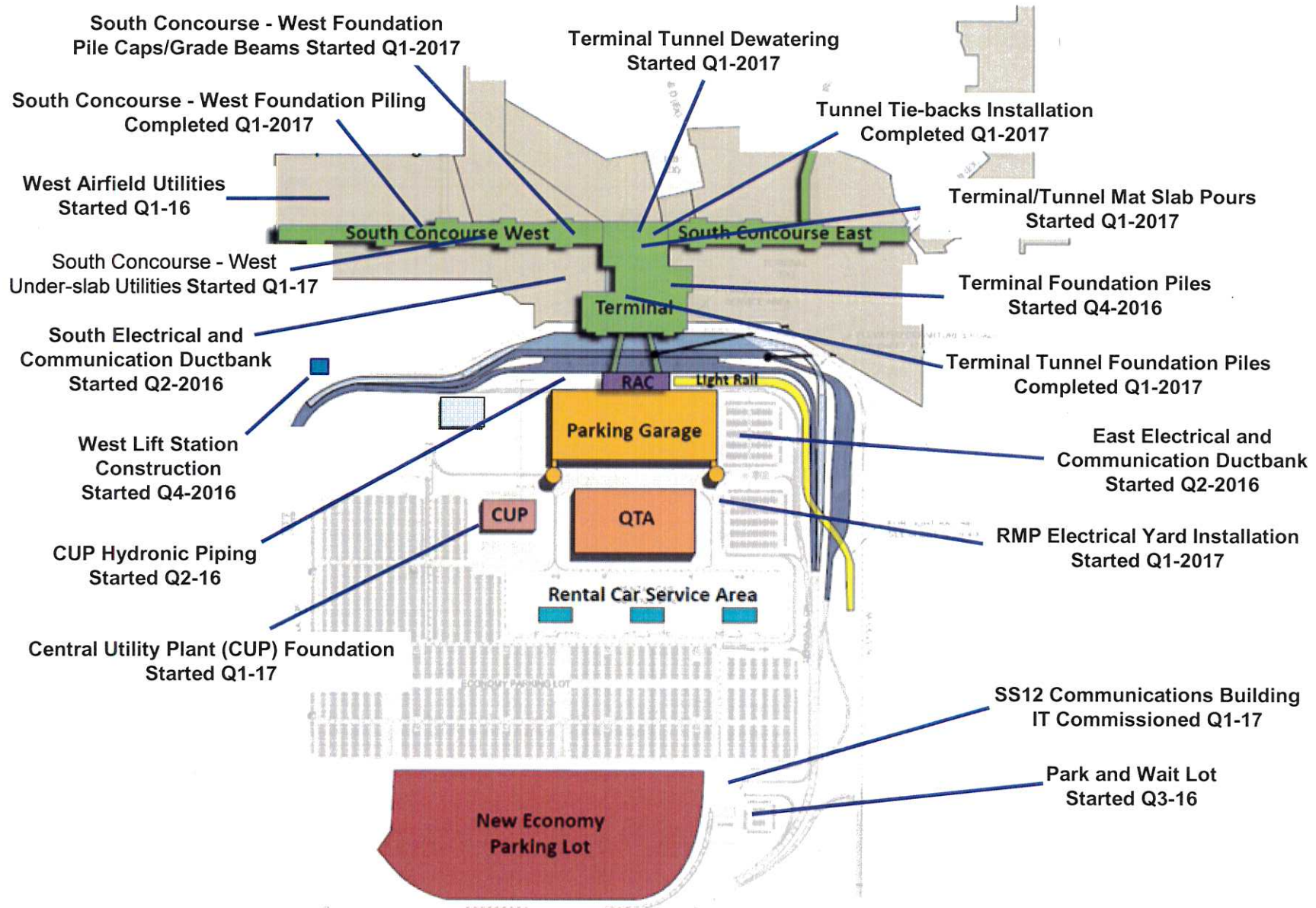
Schedule		Recent Milestones Achieved
Activity	Target Date	
Issue Draft Program Report	Nov 2016 A	* Finalized CMAR - Austin Okland, JV Agreement
Receive CMAR RFQ Responses	Dec 2016 A	* Reviewed HOK Progress Printing
CMAR Interviews	Jan 2017 A	* Finalized Concessions Space Planning
Start Design Phase	Jan 2017 A	* Finalized Third Level Expansion - Airline Club Space
CMAR NTP	Apr 2017	* Issued Preliminary HOK Design Schedule
Issued Design Documents	May 2017	* Issued HOK Staffing Plan

## Concerns/Issues/Risks

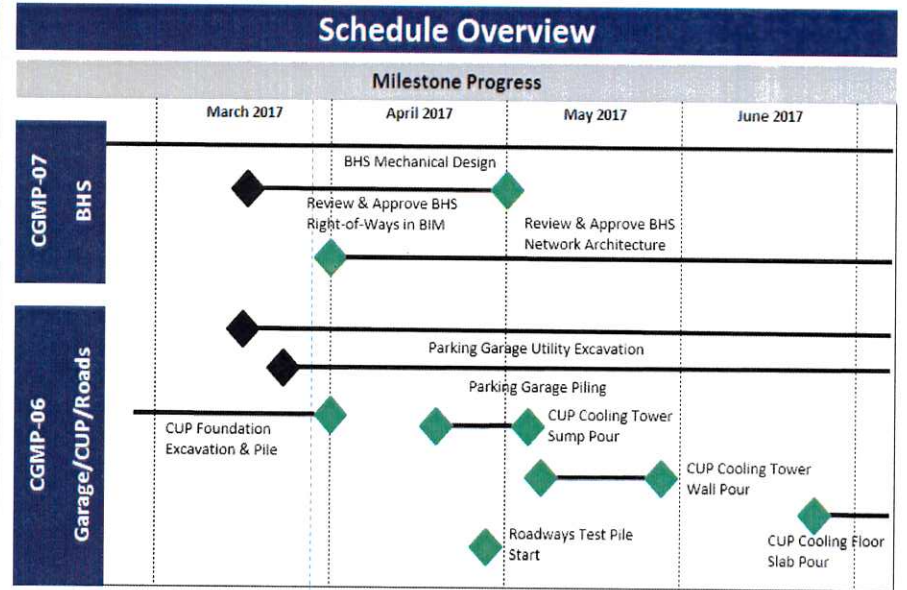
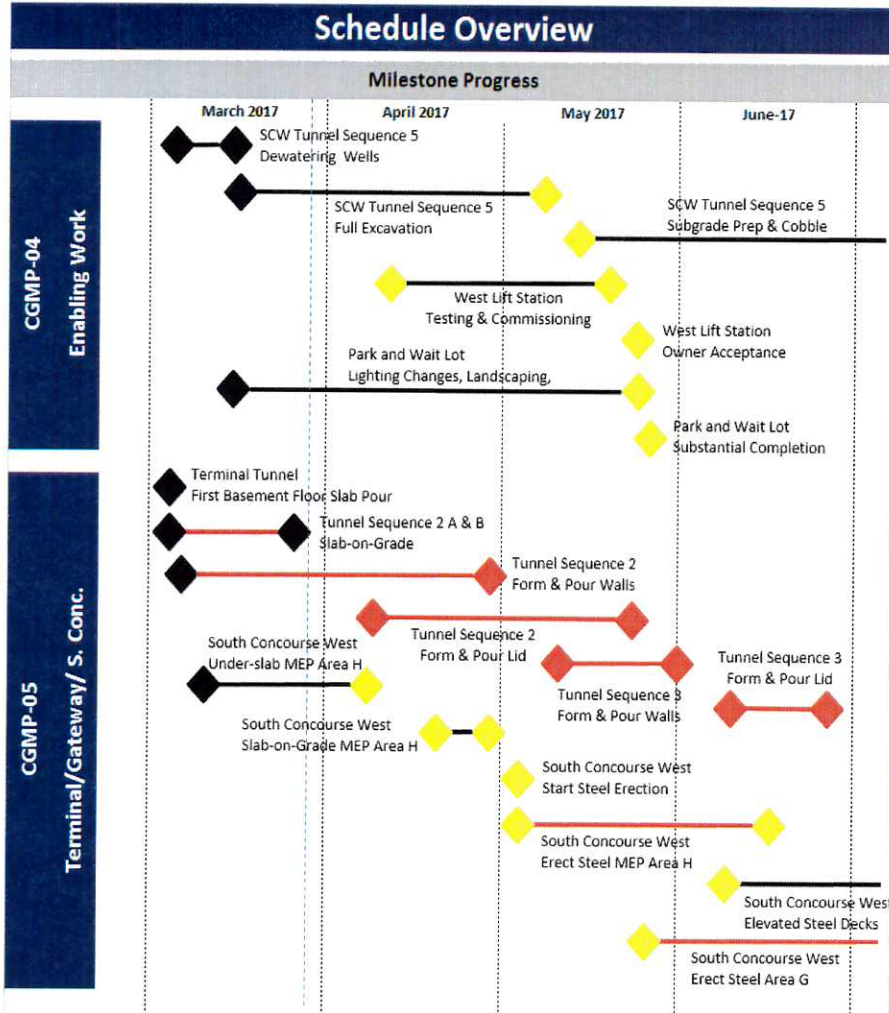
- \* Coordinate Design and Construction Schedules
- \* HOK Design Phase Document Level of Completion
- \* CMAR Mobilization and Startup Activities



# Overall Program Construction & Paving Sequence



# Near Term Schedule



- Critical Data Date
- Achieved
- Float Used
- On Target
- Late

Terminal Tunnel activities on the critical path are late by approximately two weeks due to groundwater and weather impact.

# Overall Capital Program Costs

Construction Budget March 2017	Budget	Spent	Committed	Uncommitted	Pending	EAC
Preconstruction Services	\$ 10,748,596	\$ 9,575,407	\$ 9,575,407	\$ -	\$ -	\$ 9,575,407
General Conditions Services	\$ 91,179,758	\$ 27,121,801	\$ 78,593,872	\$ 11,127,306	\$ -	\$ 89,721,178
CGMP 03 - QTA, RSS, South Parking Lot	\$ 94,000,000	\$ 88,705,898	\$ 94,000,000	\$ -	\$ -	\$ 88,721,327
CGMP 04 - Landside/Airside Enabling Work	\$ 81,096,442	\$ 67,588,391	\$ 81,096,442	\$ -	\$ -	\$ 81,096,442
CGMP 05 - Terminal, South Concourse West , Gateway	\$ 795,346,442	\$ 35,824,068	\$ 795,346,442	\$ -	\$ -	\$ 795,346,442
CGMP 06 - Parking Deck, Roadways, Central Utility Plant	\$ 377,293,285	\$ 3,745,399	\$ 363,855,782	\$ -	\$ -	\$ 363,855,782
CGMP 07 - Baggage Handling System	\$ 86,085,766	\$ 2,478,203	\$ 86,085,766	\$ -	\$ -	\$ 86,085,766
CGMP 08 - Not Used	\$ -	\$ -	\$ -	\$ -	\$ -	\$ -
CGMP 09 - Apron Paving SCW/Hydrant Fueling	\$ 56,791,127	\$ -	\$ -	\$ 56,791,127	\$ -	\$ 56,791,127
CGMP 10 - South Concourse East	\$ 212,143,940	\$ -	\$ -	\$ 212,143,940	\$ -	\$ 212,143,940
CGMP 11 - Apron Paving SCE/Hydrant Fueling	\$ 75,699,182	\$ -	\$ -	\$ 75,699,182	\$ -	\$ 75,699,182
<b>Total Construction Budget</b>	<b>\$ 1,880,384,538</b>	<b>\$ 235,039,167</b>	<b>\$ 1,508,553,711</b>	<b>\$ 355,762,555</b>	<b>\$ -</b>	<b>\$ 1,859,036,593</b>
Soft Cost Budget	\$ 251,316,222	\$ 131,372,216	\$ 153,002,340	\$ 98,867,171	\$ -	\$ 251,316,222
Owners Reserve	\$ 44,852,234	\$ -	\$ -	\$ 65,900,177	\$ -	\$ 66,200,177
<b>Total TRP Phase 1 Budget</b>	<b>\$ 2,176,552,992</b>	<b>\$ 366,411,383</b>	<b>\$ 1,661,556,051</b>	<b>\$ 520,529,903</b>	<b>\$ -</b>	<b>\$ 2,176,552,992</b>
North Concourse Budget	\$ 737,000,000	\$ 1,625,073	\$ 29,818,792	\$ 707,181,208	\$ -	\$ 737,000,000
CIP Multi-Year Budget	\$ 225,402,000	\$ -	\$ -	\$ 225,402,000	\$ -	\$ 225,402,000
<b>Total Capital Program Budget</b>	<b>\$ 3,138,954,992</b>	<b>\$ 368,036,456</b>	<b>\$ 1,691,374,843</b>	<b>\$ 1,453,113,111</b>	<b>\$ -</b>	<b>\$ 3,138,954,992</b>

# Project Statistics

Safety Statistics Through 4/11/2017		Trade Staffing 4/11/2017		
630 Days without a Lost Time Injury		325 Trade Workers on Site		
893,093 Hours Worked to Date				
Contract Local/Non-Local Awarded Statistics				
Local Trades	Dollar Value	Trade Count	Percentage	
Total Local (Wasatch Front) Contractors	\$654,370,877	72	59%	
Total Out of State Contractors	\$462,115,509	13	41%	
<b>Total Contract Awards</b>	<b>\$1,116,486,386</b>	<b>85</b>	<b>100%</b>	
Contract Union/Merit Shop Awarded Statistics				
Union Trades	Dollar Value	Trade Count	Percentage	
Total Union Contractors	\$455,654,558	21	41%	
Total Merit Shop Contractors	\$660,831,828	64	59%	
<b>Total Contract Awards</b>	<b>\$1,116,486,386</b>	<b>85</b>	<b>100%</b>	

# Contract Awards

No.	CGMP	Pkg	OAA Date	BIPW / Award Compliance	# of Bidders	Trade	Company Name	City	State	OAA Amount	Labor Affiliation
<b>Bid Package 1</b>											
1	3	BP1	6/11/14	Compliant	3	Earthwork/Sitework	Staker Parson Companies	Ogden	UT	\$10,750,000	Merit
2	3	BP1	6/17/14	Compliant	4	Fencing	Custom Fence	Logan	UT	\$298,200	Merit
3	3	BP1	6/17/14	Compliant	3	Site Concrete	Geneva Rock Products, Inc.	Murray	UT	\$1,012,330	Union
4	3	BP1	5/20/14	Compliant	6	Site Electrical	Taylor Electric	Salt Lake City	UT	\$2,804,976	Merit
										<b>Subtotal Bid Pack 1</b>	<b>\$14,865,506</b>
<b>Bid Package 2</b>											
1	3	BP2	7/24/14	Compliant	3	Earthwork/Sitework	Staker Parson Companies	Ogden	UT	\$9,009,363	Merit
2	3	BP2	7/22/14	Compliant	4	Deep Foundations	Hayward Baker	West Jordan	UT	\$2,903,106	Merit
3	3	BP2	7/22/14	Compliant	2	Building Concrete	Ralph L. Wadsworth	Draper	UT	\$9,970,956	Merit
4	3	BP2	8/14/14	Compliant	2	Fuel	Petro West	Bluffdale	UT	\$2,235,541	Merit
5	3	BP2	7/22/14	Compliant	9	Mechanical/Plumbing	Harris Mechanical	Salt Lake City	UT	\$5,030,649	Union
6	3	BP2	7/22/14	Compliant	3	Electrical	Wasatch Electric	Salt Lake City	UT	\$6,420,240	Union
7	3	BP2	9/5/14	Compliant	3	Waterproofing/Traffic Coatings	Waterproofing West	Salt Lake City	UT	\$935,523	Merit
8	3	BP2	9/5/14	Compliant	3	Masonry	Allens Masonry	Farmington	UT	\$2,429,988	Merit
9	3	BP2	9/5/14	Compliant	4	Structural Steel	Mountain States Steel	Lindon	UT	\$906,550	Merit
10	3	BP2	9/5/14	Compliant	4	Roofing	All Weather Waterproofing	Murray	UT	\$422,888	Merit
11	3	BP2	9/10/14	Compliant	4	Hollow Metal Doors & Frames	Beacon Metals	Salt Lake City	UT	\$272,115	Merit
12	3	BP2	10/3/14	Compliant	3	OH Coiling Doors	Overhead Door Co	Bountiful	UT	\$452,359	Merit
13	3	BP2	9/5/14	Compliant	3	Gypsum Board & Acoustical Ceilings	DAW Construction Group	Draper	UT	\$489,603	Union
14	3	BP2	9/23/14	Compliant	3	Finish Flooring	Millcreek Tile	Salt Lake City	UT	\$189,137	Merit
15	3	BP2	9/23/14	Compliant	3	Painting & Coatings	Pro Painting	Murray	UT	\$549,001	Merit
16	3	BP2	10/28/14	Compliant	3	Specialties	Midwest	Salt Lake City	UT	\$126,752	Merit
17	3	BP2	9/23/14	Compliant	3	Central Vacuum System	Harris Mechanical	Salt Lake City	UT	\$498,909	Union
18	3	BP2	9/23/14	Compliant	3	Car Wash	NS Corporation	Inglewood	CA	\$1,405,590	Merit
19	3	BP2	9/5/14	Compliant	3	Elevators	Kone	West Valley City	UT	\$108,412	Union
20	3	BP2	9/5/14	Compliant	4	Fire Protection	Fire Engineering Company	Salt Lake City	UT	\$891,573	Merit
21	3	BP2	9/23/14	Compliant	2	Site Concrete	Green Construction	Kaysville	UT	\$1,301,233	Merit
22	3	BP2	10/14/14	Compliant	3	Fencing & Gates	American Fencing	Salt Lake City	UT	\$464,779	Merit
23	3	BP2	9/23/14	Compliant	3	Landscaping	Intermountain Plantings	Bluffdale	UT	\$698,150	Merit
24	3	BP2	9/23/14	Compliant	3	Lift Station	Staker Parson Companies	Ogden	UT	\$531,279	Merit
25	3	BP2	8/19/15	Compliant	3	East Lift Station	Staker Parson Companies	Ogden	UT	\$1,859,551	Merit
26	3	BP2	11/4/15	Compliant	4	Final Cleaning	Aapple	Salt Lake City	UT	\$45,734	Merit
										<b>Subtotal Bid Pack 2</b>	<b>\$50,148,981</b>
<b>Bid Package 3</b>											
1	4	BP3	10/28/15	Compliant	3	Sitework	Ames Construction, Inc.	Salt Lake City	UT	\$24,949,103	Union
2	4	BP3	10/27/15	Compliant	4	Concourse E / Hold Room GC	Creative Times, Inc.	Ogden	UT	\$612,913	Merit
3	4	BP3	10/27/15	Compliant	2	Fencing	Custom Fence Company	Logan	UT	\$820,018	Merit
4	4	BP3	12/7/15	Compliant	5	Direct Buried Hydronic Piping	J&S Mechanical Contractors, Inc.	Draper	UT	\$2,880,470	Merit
5	4	BP3	10/27/15	Compliant	4	Shoring / Tunnel Ex / Stone Columns	Malcolm Drilling Company, Inc.	Salt Lake City	UT	\$16,737,347	Union
6	4	BP3	11/12/15	Compliant	3	Jet Fueling	Mecon Industries, Inc.	Lansing	IL	\$2,196,979	Union
7	4	BP3	10/28/15	Compliant	3	Landscaping	RBI, Inc.	Draper	UT	\$609,078	Merit
8	4	BP3	10/27/15	Compliant	6	Site Electrical	Taylor Electric, Inc.	Salt Lake City	UT	\$11,979,673	Merit
										<b>Subtotal Bid Pack 3</b>	<b>\$60,785,581</b>





# Contract Awards

No.	CGMP	Pkg	OAA Date	BIPW / Award Compliance	# of Bidders	Trade	Company Name	City	State	OAA Amount	Labor Affiliation
<b>Bid Package 4/8</b>											
1	5	BP4/8	7/11/16	Compliant	6	Terrazzo	Corradini	Fountain Valley	CA	\$15,316,954	Union
2	5	BP4/8	7/11/16	Compliant	4	Roofing & Skylights	Noorda Building Envelope Contractor	Salt Lake City	UT	\$11,537,459	Merit
3	5	BP4/8	9/6/16	Compliant	5	Deep Foundations - (Steel Piles)	Ralph L. Wadsworth	Draper	UT	\$16,694,504	Merit
4	5	BP4/8	7/20/16	Compliant	6	Interior Stone / Tile	Global Stone, Inc.	Vinyard	UT	\$2,156,462	Merit
5	5	BP4/8	8/5/16	Compliant	3	Doors / Frames / Hardware	DH Pace Company, Inc.	Olathe	KS	\$3,023,472	Merit
6	5	BP4/8	7/21/16	Compliant	3	Building Concrete (Turnkey)	Ralph L. Wadsworth	Draper	UT	\$34,117,609	Merit
7	5	BP4/8	7/23/16	Compliant	3	Overhead Doors	OH Door Company of Bountiful	Woods Cross	UT	\$2,001,102	Merit
8	5	BP4/8	7/26/16	Compliant	3	Carpet / Carpet Tile / Resilient Flooring	Wall 2 Wall Commercial Floor Coverings	Salt Lake City	UT	\$1,396,099	Merit
9	5	BP4/8	7/19/16	Compliant	3	Passenger Boarding Bridges	John Bean Technologies	Ogden	UT	\$25,291,777	Union
10	5	BP4/8	7/16/16	Compliant	3	Sitework / Site Utilities	Ames Construction Inc.	Salt Lake City	UT	\$6,303,460	Union
11	5	BP4/8	8/5/16	Compliant	5	Waterproofing / Expansion Joints	Specialty Systems	Sandy	UT	\$6,448,403	Merit
12	5	BP4/8	8/23/16	Compliant	2	Division 10 - Specialties	ISEC, Inc.	Englewood	UT	\$2,955,242	Merit
13	5	BP4/8	8/31/16	Compliant	3	Millwork / Ornamental Metals	ISEC, Inc.	Englewood	UT	\$25,769,447	Merit
14	5	BP4/8	9/23/16	Compliant	3	Structural & Misc Steel / Fireproofing	ADF International Inc.	Great Falls	MO	\$95,705,881	Union
15	5	BP4/8	9/30/16	Compliant	3	Mechanical (Plumbing & HVAC)	RK Mechanical	Denver	CO	\$112,172,261	Union
16	5	BP4/8	9/22/16	Compliant	3	Ceilings	Golder Acoustics, Inc.	Salt Lake City	UT	\$11,049,460	Merit
17	5	BP4/8	9/12/16	Compliant	4	Conveying - Elevators, Escalators	Schindler Elevator Corp.	Boise	UT	\$17,144,954	Union
18	5	BP4/8	9/12/16	Compliant	3	Signage	Young Electric Sign Company	Salt Lake City	UT	\$1,976,447	Merit
19	5	BP4/8	9/12/16	Compliant	4	Building Electrical	Ludvik Electric Company	Lakewood	CO	\$76,609,577	Merit
20	5	BP4/8	9/12/16	Compliant	5	Painting / Wallcoverings / Epoxy Painting	SME Steel Coatings, Inc	Salt Lake City	UT	\$6,696,150	Union
21	5	BP4/8	9/21/16	Compliant	2	Fire Protection	Wesern Automatic Sprinkler Corp.	Salt Lake City	UT	\$12,084,669	Merit
22	5	BP4/8	9/17/16	Compliant	5	Masonry	Allens Masonry	Salt Lake City	UT	\$5,712,687	Merit
23	5	BP4/8	9/16/16	Compliant	2	Glass / Glazing / Metal Panels	Steel Encounters Inc.	Salt Lake City	UT	\$58,058,295	Merit
24	5	BP4/8	3/4/17	Compliant	3	Drywall	DAW Construction Group	Draper	UT	\$20,527,597	Union
25	5	BP4/8	3/4/17	Compliant	3	Drywall	Pete King Commercial	Salt Lake City	UT	\$37,495,024	Merit
<b>Subtotal Bid Pack 4&amp;8</b>										<b>\$608,244,992</b>	



# Contract Awards

No.	CGMP	Pkg	OAA Date	BIPW / Award Compliance	# of Bidders	Trade	Company Name	City	State	DAA Amount	Labor Affiliation	
<b>Bid Package 5/7</b>												
1	6	BP5/7	11/15/16	Compliant	3	Landscape & Irrigation	Intermountain Plantings	Bluffdale	UT	\$5,920,005	Merit	
2	6	BP5/7	11/17/16	Compliant	4	Roads / Sitework / Deep Foundations	Ralph L. Wadsworth	Draper	UT	\$66,010,187	Merit	
3	6	BP5/7	11/15/16	Compliant	5	Building Concrete	HDJV Concrete	Salt Lake City	UT	\$56,922,306	Merit	
4	6	BP5/7	11/7/16	Compliant	4	Structural & Miscellaneous Steel	Schuff	Phoenix	UT	\$15,685,228	Union	
5	6	BP5/7	11/1/16	Compliant	5	Masonry	Allens Masonry	Salt Lake City	UT	\$2,791,226	Merit	
6	6	BP5/7	11/15/16	Compliant	2	Glass / Metal Panels / Roofing	Noorda Building Envelope Contractor	Salt Lake City	UT	\$8,094,818	Merit	
7	6	BP5/7	11/15/16	Compliant	3	Waterproofing / Caulking / Expansion Joints	Specialty Systems, Inc.	Sandy	UT	\$5,585,345	Merit	
8	6	BP5/7	11/1/16	Compliant	2	Drywall	Clayco	Orem	UT	\$2,789,293	Merit	
9	6	BP5/7	10/13/16	Compliant	3	Doors / Frames / Hardware	DH Pace Company, Inc.	Olathe	KS	\$177,584	Merit	
10	6	BP5/7	11/1/16	Compliant	2	Paint / Epoxy Flooring	Specialty Finishes	Atlanta	GA	\$4,132,298	Merit	
11	6	BP5/7	11/7/16	Compliant	2	Division 10 Specialties	ISEC, Inc.	Englewood	UT	\$1,011,693	Merit	
12	6	BP5/7	10/14/16	Compliant	3	Overhead Doors / Rapid Roll-Up Doors	Crawford Door	Salt Lake City	UT	\$22,841	Merit	
13	6	BP5/7	11/1/16	Compliant	4	Tile / Stone	KJ Tile	Salt Lake City	UT	\$59,046	Merit	
14	6	BP5/7	10/24/16	Compliant	2	Carpet / Resilient Flooring	Wall 2 Wall Commercial Floor Coverings	Salt Lake City	UT	\$36,085	Merit	
15	6	BP5/7	11/1/16	Compliant	5	Signage	Serigraphics	Minneapolis	MN	\$1,784,586	Merit	
16	6	BP5/7	9/12/16	Compliant	4	Conveying Equipment	Schindler	Boise	UT	\$5,648,612	Union	
17	6	BP5/7	11/1/16	Compliant	3	Fire Protection	Fire Engineering Company, Inc.	Salt Lake City	UT	\$1,671,352	Merit	
18	6	BP5/7	11/17/16	Compliant	5	Mechanical - HVAC & Plumbing	RK Mechanical, Inc.	Denver	CO	\$23,209,618	Union	
19	6	BP5/7	11/18/16	Compliant	2	Electrical - Medium & Low Voltage	The Superior Group of Utah	Columbus	UT	\$33,509,915	Union	
20	6	BP5/7	11/21/16	Compliant	4	Special Systems	M.C. Dean, Inc	Dulles	VA	\$51,648,991	Merit	
										<b>Subtotal Bid Pack 5&amp;7</b>	<b>\$286,711,029</b>	
<b>Bid Package 6</b>												
1	7	BP6	6/30/16	Compliant	3	Baggage Handling System	Vanderlande Industries	Marietta	GA	\$74,731,718	Merit	
										<b>Subtotal Bid Package 6</b>	<b>\$74,731,718</b>	
<b>Bid Package 9 Bulletin 1</b>												
1	9	BP9		Compliant	3	Sitework	Ames Construction, Inc.	Salt Lake City	UT	\$20,998,579	Union	
										<b>Subtotal Bid Package 6</b>	<b>\$20,998,579</b>	



# Job Progress Photos



Waterproofing application in the Terminal Tunnel.



Power connection and meter installation for the West Lift Station.



Piles and working surface mud slab in the Terminal Tunnel.



Prep for the mud slab work surface pour in the south section of the Terminal Tunnel.



# Job Progress Photos



Setting column rebar on the Terminal Basement floor slab rebar.



North wall pour in progress in the Terminal Basement.

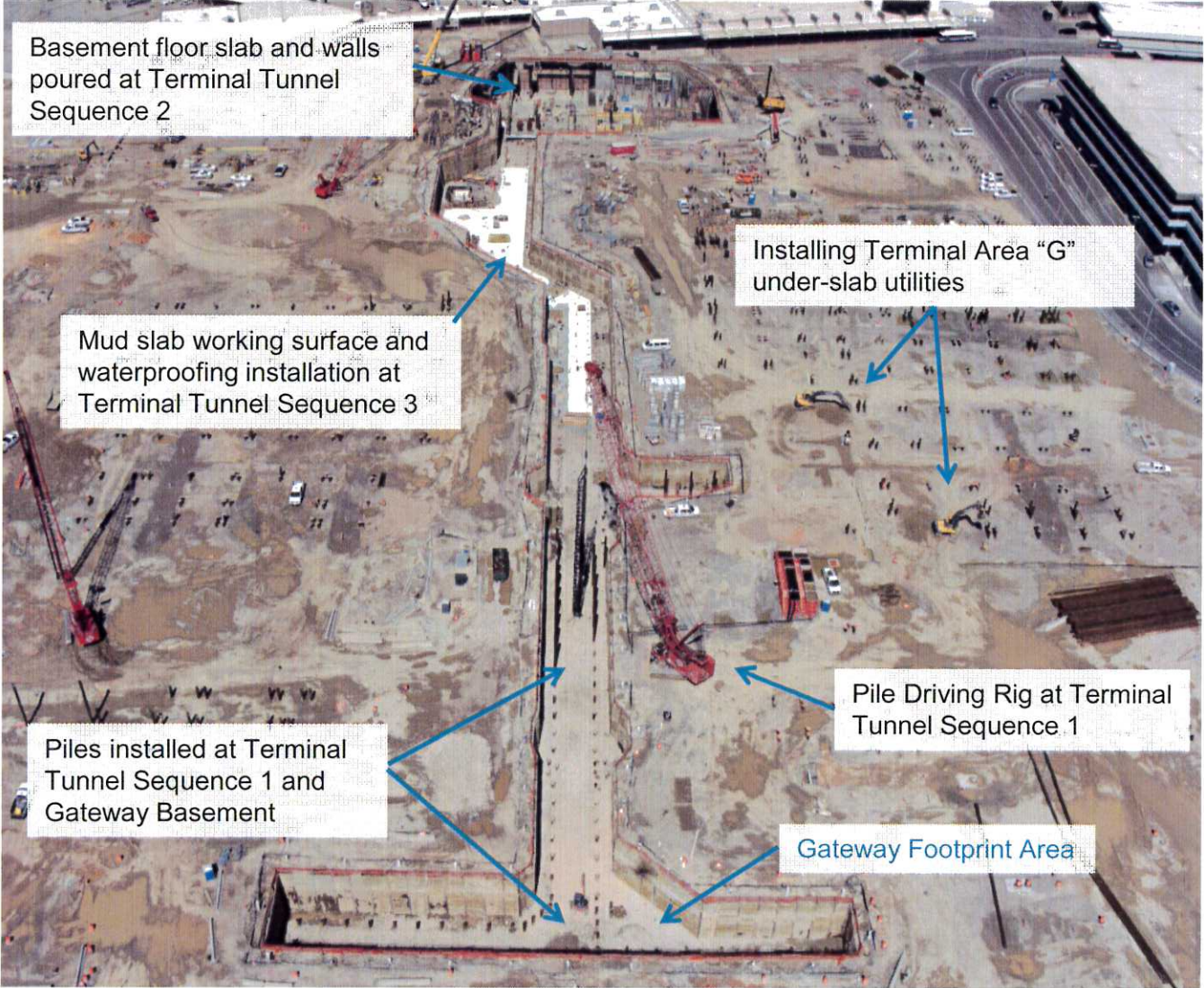


Final check atop the north wall form before concrete pumps.



Progress of walls and columns on the newly poured Terminal Tunnel basement floor slabs.

# Job Progress Aerials

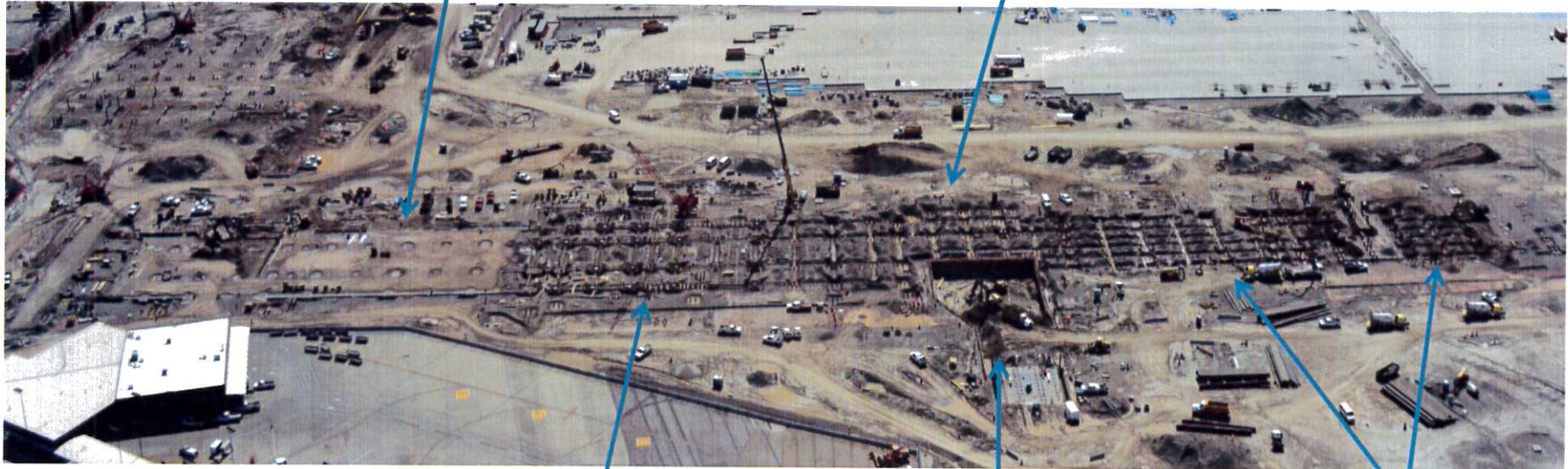


Terminal / Gateway Area

# Job Progress Aerials

Poured starter walls and readying for slab-on-grade in Area "H"

Excavating for pile caps and grade beams in Area "E"



Formed and reinforced pile caps and grade beams in Area "G", installing underground MEP utilities

Existing Mid-Concourse Tunnel excavation

Continued excavation to form and reinforce pile caps and grade beams in Areas "D" and "C"

South Concourse West Area



# Job Progress Aerials

South end of the existing Mid-Concourse Tunnel, exposed



South Concourse West Sequence 5, Mid-Concourse Tunnel excavation



Terminal Tunnel Sequence 2 area detail.



Central Utility Plant (CUP) Progress.



## SALT LAKE CITY AIRPORT BOARD

**AGENDA:** DISCUSSION ITEM (D)  
**DATE:** 19 April 2017  
**TO:** Airport Board  
**FROM:** Maureen Riley, Executive Director  
**SUBJECT:** **ASQ Survey Results**

---

Nancy Volmer, Director of Public Relations, will share current results of the ongoing Airport Service Quality (ASQ) customer survey.





SALT LAKE CITY INTERNATIONAL AIRPORT  
AIRPORT SERVICE QUALITY (ASQ) SURVEY  
2016 OVERVIEW



# ASQ Survey



- Benchmark program to measure a passenger's satisfaction at the airport.
- The survey is distributed quarterly at departure gates-1,419 passengers surveyed @ SLC.
- Results of 55 questions are compiled in nine categories.
- Responses are compared to 284 participating airports worldwide.
- Segments for Salt Lake City International:
  - Global
  - Panel (airports with a similar profile as SLC)
  - North America
  - 15-25 million total annual passengers worldwide

# Global Rankings 2016

(284 Participating Airports)



**SLC ranked 95 overall\***

## **Top Five Rankings:**

- Ranked 52 for efficiency of check-in staff (4.49)
- Ranked 55 for access - ground transportation
- Ranked 56 for courtesy of check-in staff
- Ranked 58 for flight information screens
- Ranked 60 for courtesy of airport staff and for eating establishments

## **Bottom Five Rankings:**

- Ranked 132 for airport ambience (4.06)
- Ranked 127 for walking distance inside terminal
- Ranked 121 for comfort of waiting/gate areas
- Ranked 115 for shopping facilities
- Ranked 109 for terminal cleanliness

\*SLC-4.29; Average-4.15

# North America Airports

(45 Participating Airports)



**SLC Ranked 25<sup>th</sup> Overall\***

- **Top 2016 Rankings:**

- Ranked 6 for ground transportation to and from airport
- Ranked 10 for business / executive lounges
- Ranked 10 for eating facilities and for VFM eating facilities
- Ranked 10 for baggage delivery speed

- **Bottom 2016 Rankings:**

- Ranked 33 for comfort of waiting / gate areas
- Ranked 30 for airport ambiance
- Ranked 28 for availability of washrooms
- Ranked 27 for cleanliness of washrooms
- Ranked 27 for internet access / Wi-Fi

\*SLC-4.29; Average 4.17

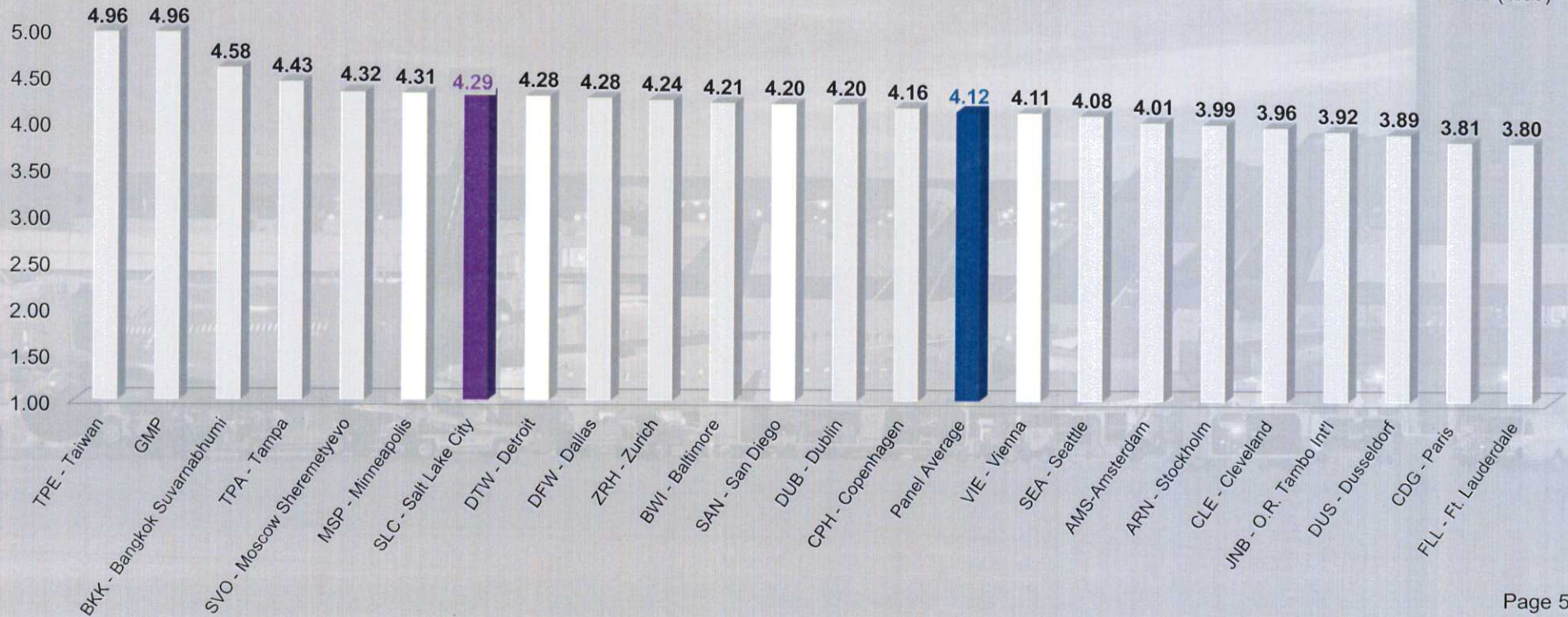
# Panel Segment

(23 of 284 Participating Airports)



## Overall Satisfaction – Panel Segment 2016

Score = Excellent (5.00)  
 Good (4.00)  
 Average (3.00)  
 Fair (2.00)  
 Poor (1.00)



# Panel Segment

(23 Participating Airports)



**SLC ranked 7<sup>th</sup> overall\***

- **Top 2016 Rankings:**

- Ranked 3<sup>rd</sup> for ease of finding way through airport (4.50)
- Ranked 4<sup>th</sup> for the following categories:
  - Efficiency of check-in staff
  - Flight information screens
  - Courtesy and helpfulness of airport staff
- Ranked 5<sup>th</sup> for the following categories:
  - Thoroughness of security inspection
  - Ease of making connections
  - Passport inspection
  - Courtesy, helpfulness of check-in staff
- Bottom 2016 Rankings:
  - Ranked 15<sup>th</sup> for shopping facilities
  - Ranked 12<sup>th</sup> for availability of baggage carts / trolleys

\*SLC 4.29; Average 4.12

# 15 – 25 Million Passengers

(38 Participating Airports)



**SLC ranked 12<sup>th</sup> overall**

## **Top 2016 Rankings:**

- Ranked 10 for ground transportation (4.29)
- Ranked 10 for ease of finding way through airport
- Ranked 10 for inspection waiting time, courtesy of inspection staff
- Ranked 10 for courtesy of airport staff
- Ranked 10 for eating facilities

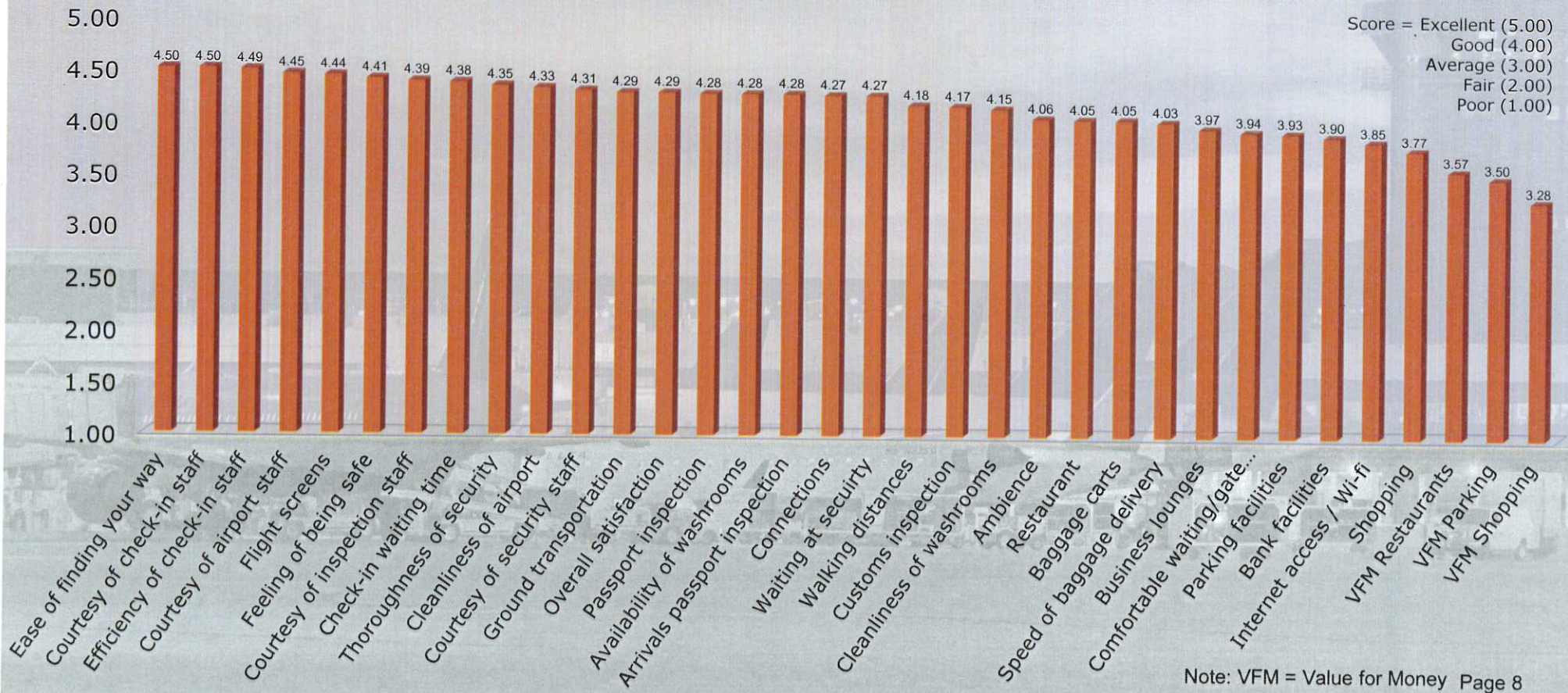
## **Bottom 2016 Rankings:**

- Ranked 17 for shopping facilities (3.77)
- Ranked 15 for comfort of waiting / gate areas
- Ranked 15 for airport ambiance
- Ranked 15 for internet access / Wi-Fi
- Ranked 14 for cleanliness of airport terminal

- SLC 4.29; Average 4.13

# SLC Airport Performance 2016

(Highest to Lowest Score)



Note: VFM = Value for Money Page 8



# SLC Airport Performance Mean Scores by Category



Categories	2013	2014	2015	2016
Overall Satisfaction	4.29	4.29	4.24	4.29
Access	3.94	4.00	4.03	4.02
Check-in at SLC	4.45	4.49	4.40	4.46
Passport / Personal ID Control	4.19	4.36	4.23	4.38
Security	4.17	4.33	4.23	4.33
Finding Your Way	4.31	4.41	4.34	4.36
Airport Facilities	3.97	4.00	4.01	3.99
Airport Environment	4.20	4.24	4.18	4.19
Arrivals Services	4.00	4.15	4.08	4.15

Green = Highest Score  
Red = Lowest Score

Score = Excellent (5.00), Good (4.00), Average (3.00), Fair (2.00), Poor (1.00)

# What is Most Important to Passengers?



## Top 10 most relevant items to passengers:

1. Waiting time at security inspection
2. Ease of finding way through airport
3. Waiting time in check-in queue
4. Cleanliness of washrooms
5. Comfort of waiting / gate areas
6. Internet access / Wi-Fi
7. Availability of washrooms
8. Restaurants / eating facilities
9. Feeling of being safe and secure
10. Walking distance inside the terminal

## SLC Rankings:

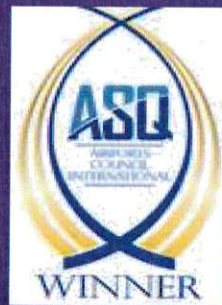
1. Waiting time at security inspection
2. Ease of finding way through airport
3. Waiting time in check-in queue / line
4. Cleanliness of washrooms
5. Availability of washrooms
6. Feeling of being safe and secure
7. Walking distance inside the terminal
8. Waiting time at passport / ID inspection

## Important areas to improve:

1. Comfort of waiting / gate areas
2. Internet access / Wi-Fi
3. Restaurant / Eating facilities



Questions?



## SALT LAKE CITY AIRPORT BOARD

**AGENDA:** DISCUSSION ITEM (E)  
**DATE:** 19 April 2017  
**TO:** Airport Board  
**FROM:** Maureen Riley, Executive Director  
**SUBJECT:** **Discussion of Rules and Regulations for Conduct of the Airport Advisory Board**

---

J.T. Martin, Airport Advisory Board Chair, will initiate the discussion regarding the following City ordinance:

2.14.120 Powers And Duties:

Subject to the provisions of section 2.14.130 of this chapter, the board shall have the following powers and duties:

A. The power to determine and establish such rules and regulations for the conduct of the board as the board members shall deem advisable. Such rules and regulations shall not be in conflict with this chapter or other applicable city, state or federal law;

## SALT LAKE CITY AIRPORT BOARD

**AGENDA:** DISCUSSION ITEM (F)  
**DATE:** 19 April 2017  
**TO:** Airport Board  
**FROM:** Maureen Riley, Executive Director  
**SUBJECT:** **Other Possible Discussion Item: General Aviation**

---

J.T. Martin, Airport Advisory Board Chair, will initiate the discussion regarding General Aviation.

DEPARTMENT OF AIRPORTS  
BOARD MEETING

19 April 2017

INFORMATIONAL ITEMS

**SALT LAKE CITY DEPARTMENT OF AIRPORTS**  
**(An Enterprise Fund of Salt Lake City Corporation)**  
**Statements of Net Position (Unaudited)**

<i>February</i>	<b>2017</b>	<b>2016</b>
<b>ASSETS</b>		
<b>Current Assets</b>		
Cash and cash equivalents	\$ 10,000,000	\$ 10,000,000
Designated for future development	214,160,457	193,656,098
Restricted cash and cash equivalents	24,269,749	-
Airline and rental fees receivable	17,021,429	16,905,889
Other current assets	4,148,947	3,881,713
<b>Total current assets</b>	<b>269,600,582</b>	<b>224,443,700</b>
<b>Noncurrent Assets</b>		
Restricted cash and cash equivalents	1,152,691,097	136,722,545
Noncurrent investments	44,950,842	44,950,842
<b>Total noncurrent assets and investments</b>	<b>1,197,641,939</b>	<b>181,673,387</b>
<b>Capital assets</b>		
Land	99,346,720	99,156,549
Buildings, Improvements, and Equipment	1,418,203,191	1,311,731,531
Construction in progress	355,325,132	279,376,343
<b>Total capital assets - at cost</b>	<b>1,872,875,043</b>	<b>1,690,264,423</b>
Less accumulated depreciation	911,014,582	858,586,649
<b>Net capital assets</b>	<b>961,860,461</b>	<b>831,677,774</b>
<b>Other assets</b>		
Other receivables	1,192,086	934,226
Other long-term assets	14,489	91,574
<b>Total other assets</b>	<b>1,206,575</b>	<b>1,025,800</b>
<b>Total noncurrent assets</b>	<b>2,160,708,975</b>	<b>1,014,376,961</b>
<b>Total Assets</b>	<b>2,430,309,557</b>	<b>1,238,820,661</b>
<b>Deferred Outflows of Resources</b>		
Pensions	10,181,182	3,566,983
<b>Total assets and deferred outflows of resources</b>	<b>\$ 2,440,490,739</b>	<b>\$ 1,242,387,644</b>

**SALT LAKE CITY DEPARTMENT OF AIRPORTS**  
**(An Enterprise Fund of Salt Lake City Corporation)**  
**Statements of Net Position (Unaudited)**

<i>February</i>	<b>2017</b>	<b>2016</b>
<b>LIABILITIES</b>		
<b>Current Liabilities</b>		
Accounts payable	\$ 6,257,504	\$ 6,756,257
Accrued compensation	1,328,255	1,123,641
Net OPEB obligation	-	235,690
Other accrued liabilities	3,559,828	4,397,691
Deposits and advance rentals	3,952,971	4,021,641
<b>Total current liabilities</b>	<b>15,098,558</b>	<b>16,534,920</b>
<b>Noncurrent Liabilities</b>		
Revenue bonds payable	1,126,480,831	-
Noncurrent compensation liability	3,629,123	3,682,739
Net pension liability	25,465,134	20,232,458
Pollution remediation liability	169,239	182,460
Other long-term liabilities	4,068,857	3,402,071
<b>Total noncurrent liabilities</b>	<b>1,159,813,184</b>	<b>27,499,728</b>
<b>Total Liabilities</b>	<b>1,174,911,742</b>	<b>44,034,648</b>
<b>Deferred Inflows of Resources</b>		
Pensions	1,937,268	2,128,856
<b>NET POSITION</b>		
Restricted for construction projects	145,670,828	107,943,504
Restricted for customer facility charges	4,963,359	8,109,108
Restricted for operation and maintenance reserve fund	16,256,567	15,669,933
Restricted for renewal and replacement reserve fund	5,000,000	5,000,000
<b>Total Restricted</b>	<b>171,890,754</b>	<b>136,722,545</b>
Net investment in capital assets	961,860,461	831,677,774
Unrestricted	129,890,514	227,823,822
<b>Net Position</b>	<b>1,263,641,729</b>	<b>1,196,224,141</b>
<b>Total liabilities, deferred inflows of resources, and net position</b>	<b>\$ 2,440,490,739</b>	<b>\$ 1,242,387,644</b>



**SALT LAKE CITY DEPARTMENT OF AIRPORTS**  
**(An Enterprise Fund of Salt Lake City Corporation)**  
**Statements of Revenues, Expenses and Changes in Net Position (Unaudited)**

*for the eight month period ended February*

	2017	2016
<b>Operating Revenues</b>		
Airfield	\$ 23,021,920	\$ 20,503,776
Terminals	35,722,866	33,926,197
Landside	41,664,876	37,372,891
Auxiliary airports	1,084,712	557,054
General aviation	1,538,421	1,394,061
Support areas	4,918,438	4,719,402
Other	2,027,498	1,364,009
Operating revenues	109,978,731	99,837,390
Less airline revenue sharing	(7,885,008)	(6,333,808)
Total operating revenues	102,093,723	93,503,582
<b>Operating Expenses</b>		
Airfield	20,070,186	18,875,873
Terminals	26,921,896	24,480,129
Landside	8,525,984	7,671,944
Auxiliary airports	1,868,789	1,009,676
General aviation	668,768	707,188
Support areas	921,701	786,058
Roads and grounds	4,981,338	4,747,992
Other	1,799,610	1,737,115
Total operating expenses before depreciation & amortization	65,758,272	60,015,975
<b>Operating Income Before Depreciation and Amortization</b>	36,335,451	33,487,607
<b>Depreciation and Amortization Expense</b>	43,595,908	41,270,584
<b>Operating Loss</b>	(7,260,457)	(7,782,977)
<b>Non Operating Revenues</b>		
Passenger facility charges	29,428,118	27,406,694
Customer facility charges	10,631,851	10,284,625
Gain on disposition of property and equipment	44,540	282,153
Interest income	1,541,539	1,273,108
Net increase in the fair value of investments	145,043	-
Non Operating Revenues	41,791,091	39,246,580
<b>Income Before Capital Contributions</b>	34,530,633	31,463,602
<b>Capital Contributions</b>	6,876,461	6,779,209
Increase in net position	41,407,095	38,242,813
Total Net Position, beginning of period	1,222,234,634	1,157,981,328
Total Net Position, end of period	\$ 1,263,641,729	\$ 1,196,224,141

**SALT LAKE CITY DEPARTMENT OF AIRPORTS**  
**(An Enterprise Fund of Salt Lake City Corporation)**  
**Operating Revenues and Expenditures to Budget (Unaudited)**

	<b>JULY - FEB 2017 ACTUALS</b>	<b>JULY - FEB 2017 BUDGET</b>	<b>SURPLUS/ DEFICIT</b>	<b>PERCENT DIFFERENT</b>
<b>Revenues:</b>				
Landing Fees	\$ 19,730,328	\$ 18,116,030	\$ 1,614,298	9%
Fuel Farm	352,059	352,000	59	0%
Aircraft Remain Overnight Fees	232,669	188,065	44,604	24%
Cargo Bldg. & Ramp Use Fee	1,060,342	1,065,860	(5,518)	-1%
Security Charges to TSA	160,479	214,720	(54,241)	-25%
Extraordinary Service Charges	72,058	82,780	(10,722)	-13%
Passenger Loading Bridges	1,100,534	1,133,895	(33,361)	-3%
Tenant Telephone Fees	185,298	245,405	(60,107)	-24%
Terminal Rents	21,299,548	21,280,170	19,378	0%
General Aviation Hangars	861,197	761,055	100,142	13%
FBO Hangars/Fuel Oil Royalty	232,967	418,329	(185,362)	-44%
Flight Kitchens	1,126,587	914,580	212,007	23%
Other Buildings & Office Space	3,596,907	3,572,800	24,107	1%
Food Service & Vending	7,130,692	6,662,149	468,543	7%
News/Gift Shop	3,904,286	3,684,955	219,331	6%
Car Rental	17,832,108	16,433,830	1,398,278	9%
Leased Site Areas	1,454,801	1,428,331	26,470	2%
Auto Parking/Ground Transportation	23,845,969	23,725,100	120,869	1%
Advertising	866,162	781,445	84,717	11%
State Aviation Fuel Tax	1,974,873	1,790,270	184,603	10%
Military	76,856	97,840	(20,984)	-21%
Glycol Recycling Sales	240,973	206,640	34,333	17%
ARFF Training	428,702	484,295	(55,593)	-11%
Other	2,212,336	1,329,722	882,614	66%
Less: Airline Revenue Sharing	(7,885,008)	(7,380,800)	(504,208)	7%
<b>Total Operating Revenues</b>	<b>102,093,723</b>	<b>97,589,466</b>	<b>4,504,257</b>	<b>5%</b>
<b>Expenses:</b>				
Salary & Wages	22,355,029	22,510,254	155,225	1%
Employee Benefits	10,484,776	10,469,252	(15,524)	0%
Maintenance Supplies	5,132,380	5,482,854	350,474	6%
Automotive Supplies	1,528,293	1,579,000	50,707	3%
Other Supplies	851,079	1,277,558	426,479	33%
Insurance Premiums	1,588,821	909,000	(679,821)	-75%
Janitorial Service	4,518,304	4,526,300	7,996	0%
Maintenance Contracts	993,017	1,092,800	99,783	9%
Other Contractual Services	4,178,741	4,318,442	139,701	3%
Professional & Tech Service	1,934,264	2,387,013	452,749	19%
Utilities	4,479,673	4,884,600	404,927	8%
Administrative Service Fee	949,695	1,137,500	187,805	17%
Aircraft Rescue Fire Fighting	3,097,348	2,888,000	(209,348)	-7%
Other Expenses	4,396,640	1,700,635	(2,696,005)	-159%
Operating Expenses Before Capitalized Salaries:	<b>66,488,058</b>	<b>65,163,208</b>	<b>(1,324,851)</b>	<b>-2%</b>
Capitalized Salaries	729,786	729,786	-	0%
<b>Total Operating Expenses</b>	<b>65,758,272</b>	<b>64,433,421</b>	<b>(1,324,850)</b>	<b>-2%</b>
<b>Operating Income</b>	<b>\$ 36,335,451</b>	<b>\$ 33,156,045</b>	<b>\$ 3,179,406</b>	<b>10%</b>

**SALT LAKE CITY DEPARTMENT OF AIRPORTS**  
**(An Enterprise Fund of Salt Lake City Corporation)**  
**Operating Revenues and Expenditures to Prior Year (Unaudited)**

	<u>JULY - FEB 2017</u>	<u>JULY - FEB 2017</u>	<u>SURPLUS/ (DEFICIT)</u>	<u>PERCENT CHANGE</u>
<b>Revenues:</b>				
Landing Fees	\$ 19,730,328	\$ 17,367,977	\$ 2,362,351	14%
Fuel Farm	352,059	352,059	-	0%
Aircraft Remain Overnight Fees	232,669	164,650	68,019	41%
Cargo Bldg. & Ramp Use Fee	1,060,342	1,068,431	(8,089)	-1%
Security Charges to TSA	160,479	162,581	(2,102)	-1%
Extraordinary Service Charges	72,058	78,701	(6,643)	-8%
Passenger Loading Bridges	1,100,534	1,314,190	(213,656)	-16%
Tenant Telephone Fees	185,298	238,319	(53,021)	-22%
Terminal Rents	21,299,548	20,154,998	1,144,550	6%
Executive Terminal	-	32,738	(32,738)	-100%
General Aviation Hangars	861,197	745,968	115,229	15%
FBO Hangars/Fuel Oil Royalty	232,967	370,887	(137,920)	-37%
Flight Kitchens	1,126,587	905,541	221,046	24%
Other Buildings & Office Space	3,596,907	3,566,063	30,844	1%
Food Service & Vending	7,130,692	6,588,210	542,482	8%
News/Gift Shops	3,904,286	3,645,387	258,899	7%
Car Rental	17,832,108	14,037,323	3,794,785	27%
Leased Site Areas	1,454,801	1,304,021	150,780	12%
Auto Parking/Ground Transportation	23,845,969	23,335,376	510,593	2%
Advertising	866,162	789,203	76,959	10%
State Aviation Fuel-Tax	1,974,873	1,847,803	127,070	7%
Military	76,856	70,782	6,074	9%
Glycol Recycling Sales	240,973	228,727	12,246	5%
ARFF Training	428,702	487,309	(58,607)	-12%
Other	2,212,336	980,142	1,232,194	126%
Less: Airline Revenue Sharing	(7,885,008)	(6,333,808)	(1,551,200)	24%
<b>Total Operating Revenues</b>	<b>102,093,723</b>	<b>93,503,582</b>	<b>8,590,142</b>	<b>9%</b>
<b>Expenses:</b>				
Salary & Wages	22,355,029	21,746,978	608,051	3%
Employee Benefits	10,484,776	9,925,198	559,578	6%
Maintenance Supplies	5,132,380	5,628,336	(495,956)	-9%
Automotive Supplies	1,528,293	1,232,490	295,803	24%
Other Supplies	851,079	810,688	40,391	5%
Insurance Premiums	1,588,821	673,844	914,977	136%
Janitorial Service	4,518,304	4,408,123	110,181	2%
Maintenance Contracts	993,017	1,083,835	(90,819)	-8%
Other Contractual Services	4,178,741	2,556,732	1,622,009	63%
Professional & Tech Service	1,934,264	3,274,206	(1,339,942)	-41%
Utilities	4,479,673	4,500,213	(20,540)	0%
Administrative Service Fee	949,695	838,925	110,769	13%
Aircraft Rescue Fire Fighting	3,097,348	2,982,245	115,103	4%
Other Expenses	4,396,639	1,081,270	3,315,369	307%
Operating Expenses Before Capitalized Salaries	<b>66,488,058</b>	<b>60,743,083</b>	<b>5,744,976</b>	<b>9%</b>
Capitalized Salaries	<b>729,786</b>	<b>727,107</b>	<b>2,679</b>	<b>0%</b>
<b>Total Operating Expenses</b>	<b>65,758,272</b>	<b>60,015,975</b>	<b>5,742,296</b>	<b>10%</b>
<b>Operating Income</b>	<b>\$ 36,335,451</b>	<b>\$ 33,487,607</b>	<b>\$ 2,847,843</b>	<b>9%</b>





**SALT LAKE CITY INTERNATIONAL AIRPORT  
AIR TRAFFIC STATISTICS AND ACTIVITY REPORT  
TWO MONTHS ENDED FEBRUARY 2017**

	FEBRUARY 2017	CHANGE	YTD 2017	CHANGE	12 MO ROLLING Ending 02/2017	CHANGE
<b>PASSENGERS</b>						
<i>DOMESTIC</i>						
Enplaned	845,337	1.63%	1,746,737	3.73%	11,269,587	3.86%
Deplaned	852,099	2.65%	1,737,415	3.75%	11,251,642	3.80%
<b>TOTAL DOMESTIC</b>	<b>1,697,436</b>	<b>2.14%</b>	<b>3,484,152</b>	<b>3.74%</b>	<b>22,521,229</b>	<b>3.83%</b>
<i>INTERNATIONAL</i>						
Enplaned	26,777	45.22%	57,293	46.81%	393,962	41.06%
Deplaned	27,234	47.86%	58,981	49.12%	403,541	41.33%
<b>TOTAL INTERNATIONAL</b>	<b>54,011</b>	<b>46.54%</b>	<b>116,274</b>	<b>47.97%</b>	<b>797,503</b>	<b>41.20%</b>
<b>TOTAL PASSENGERS</b>	<b>1,751,447</b>	<b>3.11%</b>	<b>3,600,426</b>	<b>4.75%</b>	<b>23,318,732</b>	<b>4.77%</b>
<b>LANDED WEIGHT</b>						
Air Carriers	999,820,662	2.94%	2,088,565,743	5.82%	13,051,891,069	6.01%
Cargo Carriers	81,079,393	2.90%	167,820,977	4.67%	1,091,813,117	5.07%
<b>TOTAL LANDED WEIGHT (LBS)</b>	<b>1,080,900,055</b>	<b>2.93%</b>	<b>2,256,386,720</b>	<b>5.74%</b>	<b>14,143,704,186</b>	<b>5.94%</b>
<b>MAIL</b>						
Enplaned	1,517,245	-8.68%	3,315,399	-5.85%	20,132,688	-15.95%
Deplaned	897,859	15.05%	1,946,239	19.31%	10,394,499	-16.05%
<b>TOTAL MAIL (LBS)</b>	<b>2,415,104</b>	<b>-1.09%</b>	<b>5,261,638</b>	<b>2.11%</b>	<b>30,527,187</b>	<b>-15.99%</b>
<b>CARGO</b>						
Enplaned	12,715,611	-4.92%	26,266,820	-2.51%	165,129,388	-2.71%
Deplaned	14,397,384	10.68%	29,655,241	10.69%	190,804,658	11.04%
<b>TOTAL CARGO (LBS)</b>	<b>27,112,995</b>	<b>2.77%</b>	<b>55,922,061</b>	<b>4.07%</b>	<b>355,934,046</b>	<b>4.21%</b>
<b>MAIL &amp; CARGO</b>						
Enplaned	6,358	-4.92%	13,133	-2.52%	82,565	-2.71%
Deplaned	7,199	10.69%	14,828	10.69%	95,402	11.04%
<b>TOTAL MAIL &amp; CARGO (TONS)</b>	<b>13,557</b>	<b>2.77%</b>	<b>27,961</b>	<b>4.07%</b>	<b>177,967</b>	<b>4.21%</b>
<b>AIRCRAFT OPERATIONS</b>						
Passenger Aircraft	18,740	1.05%	39,284	3.30%	244,708	4.47%
All-Cargo Aircraft	1,518	1.88%	3,134	4.40%	20,170	7.46%
General Aviation	3,849	-11.54%	7,839	-10.14%	48,556	-7.12%
Military	546	-9.15%	948	-21.98%	6,937	-1.13%
<b>TOTAL AIRCRAFT OPERATIONS</b>	<b>24,653</b>	<b>-1.34%</b>	<b>51,205</b>	<b>0.46%</b>	<b>320,371</b>	<b>2.59%</b>

**SALT LAKE CITY INTERNATIONAL AIRPORT  
PASSENGER TRAFFIC REPORT  
TWO MONTHS ENDED FEBRUARY 2017**

	FEBRUARY 2016	FEBRUARY 2017	% CHANGE	YTD 2016	YTD 2017	% CHANGE	12 MO ROLLING Ending 02/2017	% CHANGE
<b>ENPLANED PASSENGERS</b>								
AIR CANADA	-	954	100.00%	-	2,029	100.00%	15,082	100.00%
ALASKA	19,995	23,126	15.66%	40,623	47,986	18.13%	289,266	9.37%
Horizon Air / Alaska	4,992	1,959	-60.76%	10,211	5,538	-45.76%	54,161	-0.09%
Skywest / Alaska	6,948	5,887	-15.27%	13,897	11,316	-18.57%	78,299	-18.11%
AMERICAN	50,688	52,573	3.72%	105,015	107,923	2.77%	600,564	53.38%
American Eagle/Republic	-	-	0.00%	-	-	0.00%	6,876	-80.69%
Compass	2,120	3,617	70.61%	4,595	8,154	77.45%	65,534	718.66%
Envoy Air	5,653	-	-100.00%	10,016	1,094	-89.08%	14,868	9.67%
American/Mesa Air	64	-	-100.00%	292	-	-100.00%	2,601	212.24%
SkyWest (American)	2,834	7,001	147.04%	5,482	13,385	144.16%	57,219	1.36%
DELTA	391,819	424,551	8.35%	789,477	876,610	11.04%	5,888,591	7.94%
SkyWest (Delta Connection)	167,548	150,907	-9.93%	347,223	317,331	-8.61%	2,150,208	-2.38%
Compass (Delta Connection)	6,870	3,872	-43.64%	14,596	6,493	-55.52%	113,014	-27.67%
FRONTIER	19,273	23,434	21.59%	36,135	43,692	20.91%	238,973	24.23%
JETBLUE	20,439	25,859	26.52%	41,523	54,471	31.18%	269,970	24.81%
KLM ROYAL DUTCH AIRLINES	-	-	0.00%	-	-	0.00%	13,431	100.00%
SOUTHWEST	101,644	93,554	-7.96%	205,225	196,118	-4.44%	1,218,253	2.13%
UNITED	25,723	33,596	30.61%	50,056	63,634	27.13%	246,461	17.37%
Express Jet	198	-	-100.00%	198	-	-100.00%	248	-88.12%
Mesa Airlines (United Express)	213	-	-100.00%	436	303	-30.50%	3,202	-52.02%
Republic Airways (United)	712	3,667	415.03%	854	7,988	835.36%	22,373	1.39%
Shuttle America (United Express)	272	-	-100.00%	675	-	-100.00%	8,996	-9.21%
SkyWest (United Express)	20,660	17,170	-16.89%	43,580	39,111	-10.25%	297,062	4.74%
Trans States	1,213	-	-100.00%	2,235	-	-100.00%	1,677	-24.97%
US AIRWAYS	-	-	0.00%	-	-	0.00%	-	-100.00%
Mesa (US Airways Express)	-	-	0.00%	-	-	0.00%	-	0.00%
SkyWest (US Airways Express)	-	-	0.00%	-	-	0.00%	-	-100.00%
Charters	305	387	26.89%	654	854	30.58%	6,620	40.08%
<b>TOTAL ENPLANED PASSENGERS</b>	<b>850,183</b>	<b>872,114</b>	<b>2.58%</b>	<b>1,722,998</b>	<b>1,804,030</b>	<b>4.70%</b>	<b>11,663,549</b>	<b>4.79%</b>
<b>DEPLANED PASSENGERS</b>								
AeroMexico	-	-	0.00%	-	-	0.00%	5	100.00%
AIR CANADA	-	951	100.00%	-	2,058	100.00%	16,098	100.00%
ALASKA AIR	19,565	21,699	10.91%	39,260	44,852	14.24%	279,482	9.38%
Horizon Air / Alaska	4,758	1,977	-58.45%	9,885	5,403	-45.34%	52,505	-1.14%
Skywest / Alaska	7,319	5,779	-21.04%	14,711	11,429	-22.31%	78,941	-19.10%
AMERICAN	51,175	54,055	5.63%	104,928	109,029	3.91%	600,817	51.89%
American Eagle/Republic	-	-	0.00%	-	-	0.00%	6,982	-80.22%
Compass	2,086	3,490	67.31%	4,394	7,604	73.05%	59,858	675.26%
Envoy Air (American)	5,352	-	-100.00%	9,425	975	-89.66%	14,252	7.14%
American/Mesa Air	70	-	-100.00%	379	-	-100.00%	2,831	173.79%
SkyWest (American)	2,738	6,662	143.32%	5,315	13,114	146.74%	56,046	1.14%
DELTA	388,006	427,589	10.20%	780,213	870,932	11.63%	5,897,931	7.96%
SkyWest (Delta Connection)	169,153	150,406	-11.08%	349,354	315,520	-9.68%	2,149,816	-2.64%
Compass (Delta Connection)	7,256	3,806	-47.55%	14,525	6,341	-56.34%	111,122	-28.03%
FRONTIER	19,358	24,916	28.71%	36,381	46,133	26.81%	241,765	24.12%
JETBLUE	20,159	26,652	32.21%	40,889	54,725	33.84%	271,650	24.90%
KLM ROYAL DUTCH AIRLINES	-	-	0.00%	-	-	0.00%	15,864	100.00%
SOUTHWEST	101,276	95,737	-5.47%	205,264	196,507	-4.27%	1,219,399	2.00%
UNITED	26,529	33,944	27.95%	50,989	63,383	24.31%	239,773	15.59%
Express Jet	201	-	-100.00%	201	-	-100.00%	251	-87.95%
Mesa Airlines / United Express	235	-	-100.00%	443	206	-53.50%	3,200	-56.63%
Republic Airways (United)	936	3,808	306.84%	1,079	8,039	645.04%	23,522	-6.12%
Shuttle America (United Express)	270	-	-100.00%	683	-	-100.00%	9,150	-7.45%
SkyWest (United Express)	20,320	17,423	-14.26%	42,675	39,145	-8.27%	293,980	6.94%
Trans States	1,179	-	-100.00%	2,157	-	-100.00%	1,698	-21.28%
US AIRWAYS	-	-	0.00%	-	-	0.00%	-	-100.00%
Mesa (US Airways Express)	-	-	0.00%	-	-	0.00%	-	0.00%
SkyWest (US Airways Express)	-	-	0.00%	-	-	0.00%	-	-100.00%
Charters	555	439	-20.90%	1,073	1,001	-6.71%	8,245	28.33%
<b>TOTAL DEPLANED PASSENGERS</b>	<b>848,496</b>	<b>879,333</b>	<b>3.63%</b>	<b>1,714,223</b>	<b>1,796,396</b>	<b>4.79%</b>	<b>11,655,183</b>	<b>4.73%</b>
<b>TOTAL PASSENGERS*</b>	<b>1,698,679</b>	<b>1,751,447</b>	<b>3.11%</b>	<b>3,437,221</b>	<b>3,600,426</b>	<b>4.75%</b>	<b>23,318,732</b>	<b>4.76%</b>
<b>INTERNATIONAL - ENPLANED</b>								
AIR CANADA	-	954	100.00%	-	2,029	100.00%	15,082	100.00%
DELTA	11,547	18,620	61.25%	25,130	40,491	61.13%	277,058	42.49%
SkyWest (Delta Connection)	6,892	7,203	4.51%	13,894	14,773	6.33%	77,259	25.58%
Compass	-	-	0.00%	-	-	0.00%	11,132	-51.94%
KLM ROYAL DUTCH AIRLINES	-	-	0.00%	-	-	0.00%	13,431	100.00%
Charters	-	-	0.00%	-	-	0.00%	-	-100.00%
<b>TOTAL ENPLANED INTERNATIONAL</b>	<b>18,439</b>	<b>26,777</b>	<b>45.22%</b>	<b>39,024</b>	<b>57,293</b>	<b>46.81%</b>	<b>393,962</b>	<b>41.06%</b>
<b>DEPLANED INTERNATIONAL</b>								
AeroMexico	-	-	0.00%	-	-	0.00%	5	100.00%
AIR CANADA	-	951	100.00%	-	2,058	100.00%	16,098	100.00%
DELTA	11,893	19,223	64.40%	25,705	42,338	64.71%	279,738	38.34%
SkyWest (Delta Connection)	6,726	7,060	4.97%	13,849	14,585	5.31%	81,688	31.11%
Compass	-	-	0.00%	-	-	0.00%	10,148	-51.29%
KLM ROYAL DUTCH AIRLINES	-	-	0.00%	-	-	0.00%	15,864	100.00%
Charters	-	-	0.00%	-	-	0.00%	-	-100.00%
<b>TOTAL DEPLANED INTERNATIONAL</b>	<b>18,419</b>	<b>27,234</b>	<b>47.86%</b>	<b>39,554</b>	<b>58,981</b>	<b>49.12%</b>	<b>403,541</b>	<b>41.33%</b>
<b>TOTAL INTERNATIONAL PASSENGERS</b>	<b>36,858</b>	<b>54,011</b>	<b>46.54%</b>	<b>78,578</b>	<b>116,274</b>	<b>47.97%</b>	<b>797,503</b>	<b>41.20%</b>

\*Includes International

**SALT LAKE CITY INTERNATIONAL AIRPORT**  
**TWO MONTHS ENDED FEBRUARY 2017**  
Based on Total Enplanements

**MARKET SHARE**

	FEBRUARY 2016	MARKET SHARE	FEBRUARY 2017	MARKET SHARE	YTD 2016	MARKET SHARE	YTD 2017	MARKET SHARE	12 MO ROLLING Ending 02/2016	12 MO ROLLING Ending 02/2017	MARKET SHARE
AIR CANADA	-	0.00%	954	0.11%	-	0.00%	2,029	0.11%	-	15,082	0.13%
ALASKA	31,935	3.76%	30,972	3.55%	64,731	3.76%	64,840	3.59%	414,313	421,726	3.62%
AMERICAN	61,359	7.22%	63,191	7.25%	125,400	7.28%	130,556	7.24%	506,004	747,662	6.41%
DELTA	566,237	66.60%	579,330	66.43%	1,151,296	66.82%	1,200,434	66.54%	7,814,318	8,151,813	69.89%
FRONTIER	19,273	2.27%	23,434	2.69%	36,135	2.10%	43,692	2.42%	192,362	238,973	2.05%
JETBLUE	20,439	2.40%	25,859	2.97%	41,523	2.41%	54,471	3.02%	216,309	269,970	2.31%
KLM ROYAL DUTCH	-	0.00%	-	0.00%	-	0.00%	-	0.00%	-	13,431	0.12%
SOUTHWEST	101,644	11.96%	93,554	10.73%	205,225	11.91%	196,118	10.87%	1,192,820	1,218,253	10.44%
UNITED	48,991	5.76%	54,433	6.24%	98,034	5.69%	111,036	6.15%	536,581	580,019	4.97%
US AIRWAYS	-	0.00%	-	0.00%	-	0.00%	-	0.00%	252,985	-	0.00%
Charters	305	0.04%	387	0.04%	654	0.04%	854	0.05%	4,726	6,620	0.06%
<b>TOTAL ENPLANEMENTS</b>	<b>850,183</b>	<b>100%</b>	<b>872,114</b>	<b>100%</b>	<b>1,722,998</b>	<b>100%</b>	<b>1,804,030</b>	<b>100%</b>	<b>11,130,418</b>	<b>11,663,549</b>	<b>100%</b>

**PERCENT CHANGE YOY**

	FEBRUARY 2016	FEBRUARY 2017	PERCENT CHANGE	YTD 2016	YTD 2017	PERCENT CHANGE	12 MO ROLLING Ending 02/2016	12 MO ROLLING Ending 02/2017	PERCENT CHANGE
AIR CANADA	-	954	100.00%	-	2,029	100.00%	-	15,082	100.00%
ALASKA	31,935	30,972	-3.02%	64,731	64,840	0.17%	414,313	421,726	1.79%
AMERICAN	61,359	63,191	2.99%	125,400	130,556	4.11%	506,004	747,662	47.76%
DELTA	566,237	579,330	2.31%	1,151,296	1,200,434	4.27%	7,814,318	8,151,813	4.32%
FRONTIER	19,273	23,434	21.59%	36,135	43,692	20.91%	192,362	238,973	24.23%
JETBLUE	20,439	25,859	26.52%	41,523	54,471	31.18%	216,309	269,970	24.81%
KLM ROYAL DUTCH	-	-	0.00%	-	-	0.00%	-	13,431	100.00%
SOUTHWEST	101,644	93,554	-7.96%	205,225	196,118	-4.44%	1,192,820	1,218,253	2.13%
UNITED	48,991	54,433	11.11%	98,034	111,036	13.26%	536,581	580,019	8.10%
US AIRWAYS	-	-	0.00%	-	-	0.00%	252,985	-	-100.00%
Charters	305	387	26.89%	654	854	30.58%	4,726	6,620	40.08%
<b>TOTAL ENPLANEMENTS</b>	<b>850,183</b>	<b>872,114</b>	<b>2.58%</b>	<b>1,722,998</b>	<b>1,804,030</b>	<b>4.70%</b>	<b>11,130,418</b>	<b>11,663,549</b>	<b>4.79%</b>

**SALT LAKE CITY INTERNATIONAL AIRPORT  
LANDING ACTIVITY  
TWO MONTHS ENDED FEBRUARY 2017**

	FEBRUARY 2016	FEBRUARY 2017	CHANGE	YTD 2016	YTD 2017	CHANGE	12 MO ROLLING Ending 02/2017	% CHANGE
<b>TOTAL NUMBER OF LANDINGS</b>								
<b>SCHEDULED CARRIERS</b>								
AEROMEXICO	-	-	0.00%	-	-	0.00%	1	100.00%
AIR CANADA	-	16	100.00%	-	34	100.00%	225	100.00%
ALASKA	172	189	9.88%	353	401	13.60%	2,435	9.34%
Horizon Air / Alaska	87	36	-58.62%	179	97	-45.81%	897	-11.36%
Skywest / Alaska	116	95	-18.10%	239	179	-25.10%	1,326	-17.59%
AMERICAN	384	384	0.00%	788	802	1.78%	4,441	54.79%
Compass	29	56	93.10%	64	122	90.63%	902	712.61%
American Eagle/Republic	-	-	0.00%	-	-	0.00%	99	-80.24%
American/Mesa Air	1	-	-100.00%	5	-	-100.00%	49	250.00%
Envoy Air (American)	101	-	-100.00%	177	14	-92.09%	246	0.82%
SkyWest (American)	60	115	91.67%	118	225	90.68%	1,049	-14.02%
DELTA	2,898	3,260	12.49%	5,849	6,748	15.37%	42,609	11.17%
SkyWest (Delta Connection)	3,288	2,948	-10.34%	6,846	6,243	-8.81%	41,093	-1.91%
Compass (Delta Connection)	101	29	-71.29%	216	69	-68.06%	1,717	-22.59%
FRONTIER	139	138	-0.72%	261	263	0.77%	1,611	16.74%
JETBLUE	143	205	43.36%	293	425	45.05%	1,981	23.50%
KLM ROYAL DUTCH AIRLINES	-	-	0.00%	-	-	0.00%	69	100.00%
SOUTHWEST	755	789	4.50%	1,562	1,658	6.15%	9,855	1.45%
UNITED	219	253	15.53%	415	476	14.70%	1,862	9.34%
Express Jet	4	-	-100.00%	4	-	-100.00%	11	-74.42%
Mesa / United Express	3	-	-100.00%	6	3	-50.00%	44	-56.86%
Republic Airways Holdings	13	56	330.77%	15	120	700.00%	346	-6.99%
SkyWest (United Express)	340	275	-19.12%	713	623	-12.62%	4,700	0.15%
Shuttle America (United Express)	4	-	-100.00%	10	-	-100.00%	137	-8.67%
Trans States	26	-	-100.00%	47	-	-100.00%	37	-21.28%
US AIRWAYS	-	-	0.00%	-	-	0.00%	-	-100.00%
Mesa (US Airways Express)	-	-	0.00%	-	-	0.00%	-	0.00%
SkyWest (US Airways)	-	-	0.00%	-	-	0.00%	-	-100.00%
<b>SUBTOTAL SCHEDULED CARRIERS:</b>	<b>8,883</b>	<b>8,844</b>	<b>-0.44%</b>	<b>18,160</b>	<b>18,502</b>	<b>1.88%</b>	<b>117,742</b>	<b>3.23%</b>
<b>CHARTER CARRIERS</b>								
ALLEGIAN AIR	2	-	-100.00%	3	-	-100.00%	10	-9.09%
BIGHORN AIRWAYS	1	-	-100.00%	2	-	-100.00%	1	-87.50%
BOMBARDIER BUSINESS JETS	17	34	100.00%	56	70	25.00%	248	37.02%
BOUTIQUE AIR	-	96	100.00%	-	96	100.00%	1,315	100.00%
D&D AVIATION	2	-	-100.00%	10	-	-100.00%	46	-20.69%
DELTA PRIVATE JETS	29	26	-10.34%	46	46	0.00%	176	15.79%
EXECUTIVE JET MANAGEMENT	23	13	-43.48%	40	34	-15.00%	103	-11.97%
FLIGHT OPTIONS	26	18	-30.77%	45	38	-15.56%	126	-38.24%
KEYLIME AIR	3	-	-100.00%	5	3	-40.00%	22	-83.33%
NETJETS	132	177	34.09%	315	412	30.79%	1,331	19.59%
SIERRA PACIFIC	-	-	0.00%	-	-	0.00%	7	250.00%
SUNSET AVIATION	5	4	-20.00%	9	7	-22.22%	24	-27.27%
SWIFT AIR	-	4	100.00%	8	7	-12.50%	26	13.04%
XOJET	26	34	30.77%	26	34	30.77%	193	16.97%
OTHER CHARTER	124	120	-3.23%	288	393	36.46%	983	14.84%
<b>SUBTOTAL CHARTER CARRIERS:</b>	<b>390</b>	<b>526</b>	<b>34.87%</b>	<b>853</b>	<b>1,140</b>	<b>33.65%</b>	<b>4,611</b>	<b>50.93%</b>
<b>CARGO CARRIERS</b>								
ABX AIR (DHL)	1	-	-100.00%	1	-	-100.00%	-	-100.00%
AERO CHARTER & TRANSPORT	21	20	-4.76%	41	42	2.44%	253	-0.39%
AIR TRANSPORT INTERNATIONAL	-	-	0.00%	-	2	100.00%	8	-95.58%
AMERIFLIGHT	317	265	-16.40%	611	508	-16.86%	3,812	-7.36%
CORPORATE AIR (BILLINGS)	96	97	1.04%	195	203	4.10%	1,305	4.07%
EMPIRE	16	15	-6.25%	32	30	-6.25%	203	-1.93%
FEDEX EXPRESS	123	127	3.25%	248	267	7.66%	1,735	8.03%
SOUTHERN AIR	43	43	0.00%	88	87	-1.14%	557	204.37%
UPS	84	91	8.33%	176	181	2.84%	1,180	-1.83%
WESTERN AIR EXPRESS	23	40	73.91%	48	68	41.67%	443	26.93%
OTHER CARGO	21	61	190.48%	61	179	193.44%	589	1800.00%
<b>SUBTOTAL CARGO CARRIERS:</b>	<b>745</b>	<b>759</b>	<b>1.88%</b>	<b>1,501</b>	<b>1,567</b>	<b>4.40%</b>	<b>10,085</b>	<b>7.47%</b>
<b>TOTAL LANDINGS</b>	<b>10,018</b>	<b>10,129</b>	<b>1.11%</b>	<b>20,514</b>	<b>21,209</b>	<b>3.39%</b>	<b>132,438</b>	<b>4.70%</b>
<b>TOTAL LANDING WEIGHT</b>								
<b>SCHEDULED CARRIERS</b>								
AEROMEXICO	-	-	0.00%	-	-	0.00%	94,798	100.00%
AIR CANADA	-	1,552,000	100.00%	-	3,298,000	100.00%	21,825,000	100.00%
ALASKA	22,999,400	27,906,700	21.34%	47,125,500	59,318,400	25.87%	350,680,900	17.11%
Horizon Air / Alaska	5,372,250	2,223,000	-58.62%	11,053,250	5,989,750	-45.81%	55,389,750	-11.36%
Skywest / Alaska	8,010,710	6,561,775	-18.09%	16,398,377	12,858,163	-21.59%	94,707,385	-13.48%
AMERICAN	57,547,700	56,039,900	-2.62%	116,641,600	116,783,500	0.12%	641,218,634	58.84%
Compass	2,173,550	4,197,200	93.10%	4,796,800	9,143,900	90.63%	67,604,900	712.61%
American Eagle/Republic	-	-	0.00%	-	-	0.00%	7,420,050	-80.24%
Envoy Air (American)	6,767,000	-	-100.00%	11,859,000	1,049,300	-91.15%	16,794,540	2.73%



**SALT LAKE CITY INTERNATIONAL AIRPORT  
LANDING ACTIVITY  
TWO MONTHS ENDED FEBRUARY 2017**

	FEBRUARY 2016	FEBRUARY 2017	CHANGE	YTD 2016	YTD 2017	CHANGE	12 MO ROLLING Ending 02/2017	% CHANGE
American/Mesa Air	73,500	-	-100.00%	367,500	-	-100.00%	3,601,500	250.00%
SkyWest (American)	2,820,000	7,625,000	170.39%	5,546,000	14,975,000	170.01%	63,903,000	11.45%
DELTA	454,450,400	487,697,752	7.32%	914,200,600	1,016,094,630	11.15%	6,588,533,874	8.82%
SkyWest (Delta Connection)	197,075,600	177,291,661	-10.04%	412,496,900	376,308,591	-8.77%	2,449,913,263	-1.36%
Compass (Delta Connection)	7,567,083	2,165,803	-71.38%	16,089,200	5,138,491	-68.06%	128,600,287	-22.71%
FRONTIER	18,692,720	21,379,512	14.37%	35,137,870	40,637,284	15.65%	230,016,420	21.13%
JETBLUE	20,334,314	29,151,000	43.36%	41,664,014	60,435,000	45.05%	281,697,642	23.49%
KLM ROYAL DUTCH AIRLINES	-	-	0.00%	-	-	0.00%	27,669,000	100.00%
SOUTHWEST	100,026,000	101,810,000	1.78%	206,062,000	213,510,000	3.61%	1,274,196,000	3.09%
UNITED	31,176,400	36,170,700	16.02%	58,780,480	68,193,400	16.01%	268,355,440	11.92%
Express Jet	176,368	-	-100.00%	176,368	-	-100.00%	515,920	-72.79%
Mesa / United Express	225,000	-	-100.00%	450,000	225,000	-50.00%	3,300,000	-56.85%
Republic Airways Holdings	806,000	4,056,900	403.34%	930,000	8,692,200	834.65%	25,050,092	8.56%
SkyWest (United Express)	21,732,044	18,846,722	-13.28%	45,493,798	42,479,713	-6.63%	317,420,023	7.83%
Shuttle America (United Express)	289,248	-	-100.00%	723,120	-	-100.00%	9,906,744	-8.67%
Trans States	1,106,274	-	-100.00%	1,999,803	-	-100.00%	1,606,884	-19.65%
US AIRWAYS	-	-	0.00%	-	-	0.00%	-	-100.00%
Mesa (US Airways Express)	-	-	0.00%	-	-	0.00%	-	0.00%
SkyWest (US Airways)	-	-	0.00%	-	-	0.00%	-	-100.00%
<b>SUBTOTAL SCHEDULED CARRIERS:</b>	<b>959,421,561</b>	<b>984,675,625</b>	<b>2.63%</b>	<b>1,947,992,180</b>	<b>2,055,130,322</b>	<b>5.50%</b>	<b>12,930,022,046</b>	<b>5.79%</b>
<b>CHARTER CARRIERS</b>								
ALLEGiant AIR	279,000	-	-100.00%	418,500	-	-100.00%	1,921,500	16.28%
BIGHORN AIRWAYS	8,600	-	-100.00%	17,960	-	-100.00%	9,360	-86.83%
BOUTIQUE AIR	-	1,010,510	100.00%	-	2,074,150	100.00%	14,162,710	100.00%
D&D AVIATION	31,400	-	-100.00%	155,000	-	-100.00%	685,650	-21.99%
DELTA PRIVATE JETS	823,950	796,050	-3.39%	1,199,950	1,403,650	16.98%	4,822,565	21.94%
EXECUTIVE JET MANAGEMENT	1,145,550	653,800	-42.93%	2,045,350	1,653,500	-19.16%	4,517,635	-16.08%
FLIGHT OPTIONS	548,065	381,280	-30.43%	978,095	859,065	-12.17%	2,691,510	-43.35%
KEYLIME AIR	95,172	-	-100.00%	158,620	95,172	-40.00%	697,931	-81.63%
NETJETS	4,017,650	5,238,115	30.38%	9,442,393	12,296,801	30.23%	38,622,869	23.63%
SIERRA PACIFIC	-	-	0.00%	-	-	0.00%	743,000	260.68%
SUN COUNTRY	-	-	0.00%	-	-	0.00%	1,609,000	999.79%
SWIFT AIR	484,000	284,140	-41.29%	968,000	445,925	-53.93%	2,744,925	15.24%
XOJET	840,450	1,114,350	32.59%	1,855,500	1,934,700	4.27%	6,295,350	18.28%
OTHER CHARTER	3,599,147	5,666,792	57.45%	8,295,831	12,672,458	52.76%	42,211,018	42.43%
<b>SUBTOTAL CHARTER CARRIERS:</b>	<b>11,872,984</b>	<b>15,145,037</b>	<b>27.56%</b>	<b>25,535,199</b>	<b>33,435,421</b>	<b>30.94%</b>	<b>121,735,023</b>	<b>36.13%</b>
<b>CARGO CARRIERS</b>								
ABX AIR (DHL)	320,000	-	-100.00%	320,000	-	-100.00%	-	-100.00%
AERO CHARTER & TRANSPORT	143,850	137,000	-4.76%	280,850	287,700	2.44%	1,733,050	-0.39%
AIR TRANSPORT INTERNATIONAL	-	-	0.00%	-	37,500	100.00%	148,500	-99.61%
ALPINE AVIATION	-	644,000	100.00%	-	1,304,100	100.00%	3,300,500	100.00%
AMERIFLIGHT	4,159,700	3,712,368	-10.75%	8,492,000	7,669,060	-9.69%	51,057,384	-5.26%
CORPORATE AIR (BILLINGS)	816,000	824,500	1.04%	1,657,500	1,725,500	4.10%	11,092,500	4.07%
EMPIRE	578,480	542,325	-6.25%	1,156,960	1,171,954	1.30%	7,483,077	-0.01%
FEDEX EXPRESS	40,754,200	41,951,000	2.94%	82,490,600	88,069,600	6.76%	572,189,700	8.13%
SOUTHERN AIR INC	5,318,960	5,203,000	-2.18%	10,871,223	10,532,798	-3.11%	67,898,729	201.66%
UPS	26,249,440	27,391,600	4.35%	54,294,880	54,785,040	0.90%	366,056,400	-1.13%
WESTERN AIR EXPRESS	299,000	520,000	73.91%	624,000	884,000	41.67%	5,709,600	53.99%
OTHER CARGO	152,355	153,600	0.82%	152,355	1,353,725	788.53%	5,143,677	788.67%
<b>SUBTOTAL CARGO CARRIERS:</b>	<b>78,791,985</b>	<b>81,079,393</b>	<b>2.90%</b>	<b>160,340,368</b>	<b>167,820,977</b>	<b>4.67%</b>	<b>1,091,813,117</b>	<b>5.07%</b>
<b>TOTAL LANDINGS</b>	<b>1,050,086,530</b>	<b>1,080,900,055</b>	<b>2.93%</b>	<b>2,133,943,747</b>	<b>2,256,386,720</b>	<b>5.74%</b>	<b>14,143,704,186</b>	<b>5.94%</b>

**SALT LAKE CITY INTERNATIONAL AIRPORT  
CARGO ACTIVITY REPORT  
TWO MONTHS ENDED FEBRUARY 2017**

	FEBRUARY 2016	FEBRUARY 2017	CHANGE	YTD 2016	YTD 2017	CHANGE	12 MO ROLLING Ending 02/2017	% CHANGE
<b>ENPLANED CARGO</b>								
<b>PASSENGER CARRIERS</b>								
ALASKA	7,755	1,210	-84.40%	15,505	1,210	-92.20%	114,724	-19.98%
Horizon Air / Alaska	121	-	-100.00%	213	-	-100.00%	1,205	-36.28%
Skywest / Alaska	775	740	-4.52%	1,996	778	-61.02%	11,601	30.36%
AMERICAN	45,092	9,524	-78.88%	80,016	9,754	-87.81%	357,075	10.53%
American Eagle/Republic	-	-	0.00%	-	-	0.00%	273	-98.11%
Compass	-	-	0.00%	-	-	0.00%	2	-99.89%
Envoy Air (American)	-	-	0.00%	-	-	0.00%	884	25.57%
Mesa	-	-	0.00%	-	-	0.00%	8	100.00%
SkyWest (American)	-	10	100.00%	-	10	100.00%	2,452	-65.17%
DELTA	710,515	982,246	38.24%	1,464,330	2,107,550	43.93%	9,887,238	-3.00%
SkyWest (Delta Connection)	-	-	0.00%	-	-	0.00%	-	0.00%
Compass (Delta Connection)	-	-	0.00%	-	-	0.00%	-	0.00%
FRONTIER	-	-	0.00%	-	-	0.00%	-	0.00%
KLM ROYAL DUTCH	-	-	0.00%	-	-	0.00%	346,267	100.00%
SOUTHWEST	387,336	309,164	-20.18%	796,116	623,289	-21.71%	4,032,095	-8.25%
UNITED	5,042	4,367	-13.39%	14,388	6,416	-55.41%	101,567	30.82%
Express Jet	-	-	0.00%	-	-	0.00%	-	0.00%
SkyWest (Continental Express)	-	-	0.00%	-	-	0.00%	-	0.00%
Shuttle America (United Express)	-	-	0.00%	-	-	0.00%	-	0.00%
US AIRWAYS	-	-	0.00%	-	-	0.00%	-	-100.00%
Mesa (US Airways Express)	-	-	0.00%	-	-	0.00%	-	0.00%
SkyWest (US Airways)	-	-	0.00%	-	-	0.00%	-	-100.00%
Others	-	-	0.00%	-	-	0.00%	20,200	40300.00%
<b>CARGO CARRIERS</b>								
ABX AIR (DHL)	16,001	-	-100.00%	16,001	-	-100.00%	-	-100.00%
ASTAR (DHL)	-	-	0.00%	-	-	0.00%	-	0.00%
CAPITOL CARGO INT'L (DHL)	-	-	0.00%	-	-	0.00%	-	0.00%
FEDEX EXPRESS*	7,702,069	7,085,013	-8.01%	15,599,888	14,608,642	-6.35%	91,198,939	-3.63%
GEM AIR	12,600	15,160	20.32%	12,600	41,228	227.21%	262,564	100.00%
SOUTHERN AIR	312,068	333,328	6.81%	642,291	660,555	2.84%	4,352,358	236.26%
UPS	3,472,615	3,284,935	-5.40%	6,887,517	6,770,204	-1.70%	45,350,336	0.41%
MISC CARGO	701,870	689,914	-1.70%	1,412,750	1,437,184	1.73%	9,089,600	-31.51%
<b>TOTAL ENPLANED CARGO</b>	<b>13,373,859</b>	<b>12,715,611</b>	<b>-4.92%</b>	<b>26,943,611</b>	<b>26,266,820</b>	<b>-2.51%</b>	<b>165,129,388</b>	<b>-2.71%</b>
<b>DEPLANED CARGO</b>								
<b>PASSENGER CARRIERS</b>								
ALASKA	10,557	17,038	61.39%	24,025	41,381	72.24%	271,032	9.03%
Horizon Air / Alaska	145	358	146.90%	174	482	177.01%	4,124	-57.43%
Skywest / Alaska	2,916	775	-73.42%	5,761	1,060	-81.60%	15,692	-41.70%
AMERICAN	38,205	24,131	-36.84%	66,650	48,205	-27.67%	378,052	54.93%
American Eagle/Republic	-	-	0.00%	-	-	0.00%	1,570	-47.93%
Compass	-	-	0.00%	-	-	0.00%	694	100.00%
Envoy Air (American)	-	-	0.00%	-	-	0.00%	223	25.99%
SkyWest (American)	-	26	100.00%	236	358	51.69%	4,145	331.32%
DELTA	1,036,100	1,373,957	32.61%	2,127,747	2,905,195	36.54%	15,022,798	5.51%
SkyWest (Delta Connection)	-	-	0.00%	-	-	0.00%	-	0.00%
Mesaba Airlines (Delta Connection)	-	-	0.00%	-	-	0.00%	-	0.00%
Compass (Delta Connection)	-	-	0.00%	-	-	0.00%	-	0.00%
FRONTIER	-	-	0.00%	-	-	0.00%	-	0.00%
KLM ROYAL DUTCH	-	-	0.00%	-	-	0.00%	491,488	100.00%
SOUTHWEST	397,507	362,327	-8.85%	814,848	750,232	-7.93%	4,700,319	-10.58%
UNITED	18,786	27,570	46.76%	42,433	46,449	9.46%	322,774	28.66%
Express Jet	-	-	0.00%	-	-	0.00%	-	0.00%
SkyWest	-	-	0.00%	-	-	0.00%	-	0.00%
US AIRWAYS	-	-	0.00%	-	-	0.00%	-	-100.00%
Mesa (US Airways Express)	-	-	0.00%	-	-	0.00%	-	0.00%
Skywest (US Airways)	-	-	0.00%	-	-	0.00%	-	-100.00%
KITTY HAWK CHARTERS	-	-	0.00%	-	-	0.00%	-	0.00%
Others	-	12	100.00%	-	32,265	100.00%	43,876	87652.00%
<b>CARGO CARRIERS</b>								
ABX AIR (DHL)	1,069	-	-100.00%	1,069	-	-100.00%	-	-100.00%
FEDEX EXPRESS*	6,337,639	7,317,419	15.46%	13,040,858	15,123,126	15.97%	96,718,811	20.49%
GEM AIR	21,000	12,707	-39.49%	21,000	21,174	0.83%	161,412	100.00%
SOUTHERN AIR	406,046	344,302	-15.21%	819,480	809,696	-1.19%	5,715,595	202.51%
UPS	4,404,866	4,536,646	2.99%	9,157,567	9,124,961	-0.36%	62,249,275	3.53%
MISC CARGO	332,754	380,116	14.23%	670,300	750,657	11.99%	4,702,778	-48.44%
<b>TOTAL DEPLANED CARGO</b>	<b>13,007,590</b>	<b>14,397,384</b>	<b>10.68%</b>	<b>26,792,148</b>	<b>29,655,241</b>	<b>10.69%</b>	<b>190,804,658</b>	<b>11.04%</b>
<b>TOTAL CARGO</b>	<b>26,381,449</b>	<b>27,112,995</b>	<b>2.77%</b>	<b>53,735,759</b>	<b>55,922,061</b>	<b>4.07%</b>	<b>355,934,046</b>	<b>4.21%</b>

\*FEDEX EXPRESS includes mail



Salt Lake City  
Department of Airports

**COMPARISON OF ON TIME OPERATIONS  
JANUARY 2017**

**ARRIVALS**

Airport	Flights	% On Time	Rank
CLT CHARLOTTE DOUGLAS	9,024	84.8	1
IAH HOUSTON GEORGE BUSH	10,788	82.9	2
IAD WASHINGTON DULLES	2,561	82.5	3
BWI BALTIMORE/WASHINGTON INTL	7,645	81.5	4
ATL HARTSFIELD-JACKSON ATLANTA INTL	30,135	81.2	5
MSP MINNEAPOLIS-ST. PAUL INTL	9,632	80.5	6
MIA MIAMI INTL	5,943	80.4	7
MCO ORLANDO INTL	10,989	79.8	8
TPA TAMPA INTL	5,914	79.8	9
DTW DETROIT METRO WAYNE CNTY	9,708	79.7	10
CVG CINCINNATI NORTHERN INT. KY	1,037	79.5	11
DFW DALLAS-FT. WORTH REGIONAL	15,324	79.5	12
STL ST. LOUIS LAMBERT INTL	4,660	79.2	13
MDW CHICAGO MIDWAY	6,615	79.1	14
DCA RONALD REAGAN NATIONAL	6,094	79.0	15
BOS BOSTON LOGAN INTL	9,455	78.4	16
PHL PHILADELPHIA INTL	5,769	78.3	17
ORD CHICAGO O HARE	18,783	77.9	18
SEA SEATTLE-TACOMA INTL	10,125	76.9	19
JFK NEW YORK JFK INTL	7,730	76.7	20
DEN DENVER INTL	17,021	76.2	21
PHX PHOENIX SKY HARBOR INTL	13,250	76.1	22
FLL FT. LAUDERDALE	7,974	75.0	23
<b>SLC SALT LAKE CITY INTL</b>	<b>9,105</b>	<b>74.9</b>	<b>24</b>
PDX PORTLAND INTL	4,591	72.4	25
LGA NEW YORK LAGUARDIA	7,405	70.8	26
SAN SAN DIEGO LINDBERGH FIELD	6,322	69.2	27
LAS LAS VEGAS MCCARRAN INTL	12,487	68.8	28
EWR NEWARK LIBERTY INTERNATIONAL	9,278	68.1	29
LAX LOS ANGELES INTL	17,315	62.9	30
SFO SAN FRANCISCO INTL	13,289	58.8	31
<b>AVERAGES</b>	<b>9,870</b>	<b>76.48</b>	

**DEPARTURES**

Airport	Flights	% On Time	Rank
CVG CINCINNATI NORTHERN INT. KY	1,040	84.3	1
CLT CHARLOTTE DOUGLAS	9,025	84.0	2
IAD WASHINGTON DULLES	2,567	82.7	3
DCA RONALD REAGAN NATIONAL	6,086	82.5	4
PHL PHILADELPHIA INTL	5,762	82.0	5
TPA TAMPA INTERNATIONAL	5,914	81.4	6
BOS BOSTON LOGAN INTERNATIONAL	9,456	80.9	7
MSP MINNEAPOLIS-ST. PAUL INTL	9,618	80.3	8
SEA SEATTLE-TACOMA INTL	10,126	80.3	9
PHX PHOENIX SKY HARBOR INTL	13,257	79.7	10
IAH HOUSTON GEORGE BUSH	10,805	79.6	11
BWI BALTIMORE/WASHINGTON INTL	7,648	79.3	12
MCO ORLANDO INTL	11,007	79.3	13
DTW DETROIT METRO WAYNE CNTY	9,683	79.1	14
DFW DALLAS-FT. WORTH REGIONAL	15,304	79.0	15
STL ST. LOUIS LAMBERT INTL	4,661	79.0	16
MIA MIAMI INTL	5,944	78.8	17
MDW CHICAGO MIDWAY	6,614	77.9	18
JFK NEW YORK JFK INTL	7,748	77.7	19
ATL HARTSFIELD-JACKSON ATLANTA INTL	30,138	77.5	20
ORD CHICAGO O HARE	18,782	76.0	21
LGA NEW YORK LAGUARDIA	7,398	75.9	22
<b>SLC SALT LAKE CITY INTL</b>	<b>9,097</b>	<b>75.6</b>	<b>23</b>
PDX PORTLAND INTERNATIONAL	4,591	75.3	24
SAN SAN DIEGO LINDBERGH FIELD	6,322	74.5	25
DEN DENVER INTERNATIONAL	17,030	73.8	26
FLL FT. LAUDERDALE	7,983	73.0	27
EWR NEWARK LIBERTY INTERNATIONAL	9,279	70.3	28
LAS LAS VEGAS MCCARRAN INTL	12,487	70.2	29
SFO SAN FRANCISCO INTL	13,283	67.4	30
LAX LOS ANGELES INTL	17,314	67.0	31
<b>AVERAGES</b>	<b>9,870</b>	<b>77.56</b>	

**ON TIME ARRIVAL PERFORMANCE AT SLC**

By Carrier

Air Carrier	Flights	% On Time
DL DELTA	3,302	78.8%
UA UNITED	222	76.6%
AS ALASKA	213	75.1%
OO SKYWEST	3,735	74.7%
WN SOUTHWEST	875	68.8%
AA AMERICAN	416	68.3%
B6 JETBLUE	216	63.0%
F9 FRONTIER	126	62.7%
<b>AVERAGES</b>	<b>9,105</b>	<b>74.9%</b>

Source: DOT Air Travel Consumer Report

# **DESIGN AND CONSTRUCTION REPORT**

## TABLE OF CONTENTS

- I. Area Map of Project Locations
- II. Project Schedule
- III. Construction Analysis
- IV. Design and Construction Report

SALT LAKE CITY DEPARTMENT OF AIRPORTS  
April 12, 2017

---



Salt Lake City  
International Airport

### 2016 - 2017 Project Legend

#### Airfield

1. RW 17-35 and TW P & R Pavement Rehabilitation
2. Car Wash Rebuild















#### Landside

3. 2100 North 4000 West Asphalt Overlay
4. Airport Operations Center



SALT LAKE CITY INTERNATIONAL AIRPORT  
CONSTRUCTION PROGRAM  
2016/2017 Construction Schedule

ID	Task Name	Start	Finish	2016													
				Jun '16	Jul '16	Aug '16	Sep '16	Oct '16	Nov '16	Dec '16	Jan '17	Feb '17	Mar '17	Apr '17	M		
1	<b>Airfield</b>	<b>Mon 8/1/16</b>	<b>Mon 4/17/17</b>														
2	(1) R/W 17-35 & T/W's P & R Pavement Rehabilitation	Mon 8/1/16	Mon 4/17/17														
3	(2) Car Wash Rebuild	Tue 10/4/16	Wed 4/5/17														
4	<b>Landside</b>	<b>Wed 6/1/16</b>	<b>Tue 8/1/17</b>														
5	(3) 2100 North 4000 West Asphalt Overlay	Mon 5/15/17	Thu 7/20/17														
6	(4) Airport Operations Center	Wed 6/1/16	Tue 8/1/17														
7	(5) SVRA R/W 16-34 & T/W A Pavement Rehabilitation	Mon 3/20/17	Fri 6/9/17														

Date: Wed 4/12/17	Design		Inactive Milestone		Manual Summary	
	Construction		Inactive Summary		Start-only	
	Scoping		Manual Task		Finish-only	
	Summary		Duration-only		Deadline	
	Inactive Task		Manual Summary Rollup			

**SALT LAKE CITY DEPARTMENT OF AIRPORTS  
CONSTRUCTION PROJECT STATUS 2016 - 2017**

#	PROJECT NAME	ENGINEER'S ESTIMATE	BID AMOUNT	APPROVED CHANGE ORDERS TO DATE	% OF COST INCREASE TO DATE	STATUS	CONTRACTOR
<b>CONSTRUCTION</b>							
1	R/W 17-35 & T/W's P & R Pavement Rehabilitation	\$ 11,525,000	\$ 9,871,843	\$ 97,872	0.99%	on schedule	Staker Parsons Company
2	Car Wash Rebuild	\$ 357,000	\$ 486,588	\$ 146,347	*29.41%	on schedule	Paulsen Construction
4	Airport Operations Center	\$ 15,000,000	\$ 16,515,000	\$ 518,976	3.14%	on schedule	Big D Constructiton
5	SVRA R/W 16-34 & T/W A Pavement Rehabilitation	\$ 3,381,136	\$ 2,946,149	\$ 6,710	0.23%	on schedule	Geneva Rock Products
	<b>Sub Total</b>	<b>\$ 30,263,136</b>	<b>\$ 29,819,580</b>	<b>\$ 769,905</b>	<b>2.58%</b>		
<b>DESIGN/BID/AWARD</b>							
3	2100 North & 4000 West Asphalt Overlay	\$ 2,130,518	\$ 1,654,941			award	Staker Parsons Company
	<b>Sub Total</b>	<b>\$ 2,130,518</b>	<b>\$ 1,654,941</b>				
	<b>Total</b>	<b>\$ 32,393,654</b>	<b>\$ 31,474,521</b>				
*Includes \$124,013 for added scope to replace the high speed roll-up doors at the car wash.							
Budget amount, Engineer's estimate, and Bid amount is based on construction cost only.							

## DESIGN AND CONSTRUCTION REPORT

### DESIGN/BID/AWARD

- (3) **2100 North 4000 West Asphalt Overlay** - This project will consist of the construction of an asphalt overlay on 2100 North and 4000 West streets from the intersection of 2200 West to the intersection of 1200 North. Work will include asphalt milling, installation of new bituminous surface course, and pavement markings. The bid opening for this project was held on April 6, 2017. The apparent low bidder is Staker Parsons Company. Contract documents are currently being prepared.

### CONSTRUCTION

- (1) **Runway 17-35 and Taxiways P & R Pavement Rehabilitation** - This project is nearing completion. Punch list items will be completed when weather permits.
- (2) **Car Wash Rebuild** - Substantial completion for this project was issued on April 5, 2017. The Contractor is currently working on punch list items.
- (4) **Airport Operations Center** - Doors and window installation has been completed. Drywall installation is nearing completion and the painting is on-going throughout the building. Communications cabling work continues throughout the building.
- (5) **SVRA R/W 16-34 & T/W A Pavement Rehabilitation** - The Contractor began work on schedule marking the displaced threshold and has completed the removal of pavement in the Taxiway A1 and A2 areas. Earthwork and pipe work is on-going weather permitting.





Salt Lake City  
Department of Airports

**April 2017  
Media Clippings**

**Advisory Board Meeting**

<https://www.slairport.com/assets/pdfDocuments/AABoard/mediapacketapr2017.pdf>