

DEPARTMENT OF AIRPORTS
BOARD MEETING

15 February 2017

AGENDA



Salt Lake City
Department of Airports

**SALT LAKE CITY DEPARTMENT OF AIRPORTS
BOARD MEETING AGENDA**

15 February 2017
8:00 A.M.

CONSENT AGENDA

- A. Minutes of the 18 January 2017 Meeting and 14 December 2016 Work Session

DISCUSSION ITEMS

- B. Director's Report – Kevin Robins, Executive Director Designee, SLCDA
- C. Legislative Update – Robert Bergman, Airport Lobbyist
- D. Terminal Redevelopment Program (TRP) Update – Mike Williams, TRP Director, SLCDA
- E. Airspace Briefing – Al Stuart, Operations Superintendent, SLCDA; Kenneth Whitaker, Support Manager, Salt Lake Terminal Radar Approach Control (TRACON); and Mark Durtschi, Traffic Management Supervisor, TRACON

INFORMATION ITEMS

- A. Financial Report – December 2016
- B. Air Traffic Statistics – December 2016
- C. Comparison of On-Time Operations – November 2016
- D. Construction Report – February 2017
- E. Media Clippings – February 2017

The next meeting will be held on **Wednesday, March 15, 2017**, at 8:00 a.m. Meetings are held in the Board Room located on the third level of the short-term parking garage. People with disabilities may make requests for reasonable accommodations no later than 48 hours in advance in order to attend this Airport Board Meeting. Accommodations may include alternate formats, interpreters, and other auxiliary aids. This is an accessible facility. For questions or additional information, please contact LuJean Christensen at 801-575-2096.

DEPARTMENT OF AIRPORTS
BOARD MEETING

15 February 2017

MINUTES

SALT LAKE CITY DEPARTMENT OF AIRPORTS MINUTES OF ADVISORY BOARD MEETING

18 January 2017

Members Present: Igor Best-Devereux - Chair
J.T. Martin, Vice - Chair
Mickey Gallivan
Natalie Gochnour
Cyndy Miller
Senator Karen Mayne
Larry Pinnock

Excused: Sam Granato

Mayor's Office: Patrick Leary

Department of Airports: Kevin Robins, Executive Director Designee
Phil Bevan, Property Specialist
John Buckner, Director of Administration & Commercial Services
LuJean Christensen, Management Support Coordinator
Medardo Gomez, Maintenance Operations Superintendent
Pete Higgins, Director of Operations
Marco Kunz, Attorney
Allen McCandless, Director of Planning
Joel Nelson, Property & Real Estate Manager
Ryan Tesch, Director of Finance
Nancy Volmer, Director of Public Relations & Marketing
Mike Williams, TRP Program Director

Chair Igor Best-Devereux called the meeting to order at 8:05 a.m. Best-Devereux announced that Robert Bergman had resigned from the Board and expressed appreciation for his service.

Best-Devereux acknowledged those in attendance and asked if there was a representative of the gathered union members in attendance. Best-Devereux inquired if there was an item on the agenda that they had a particular interest in and if there was, he was prepared to allow a couple of minutes for them to speak. Patrick Bierger, Southwest Carpenters, answered that there was not an agenda item that they were interested in. They understood that the bid for the interior package was due and they wanted to make a presence of local union carpenters. They understood that currently three contractors were bidding on the package. The contractors DAW and Standard had federally registered apprentice programs whereas Pete King did not participate in one. Bierger stated that DAW and Standard employees were local and part of the community and hoped the Board would consider this when a decision is made. Senator Mayne stated that this year she would bring legislation that would state the Airport Authority should make sure their procurement is umbrellaed under the State and City procurement regulations. Best-Devereux stated that this is an Advisory Board and that he appreciated the group's attendance.

AGENDA

A. Minutes

The motion was made by Mickey Gallivan and seconded by J.T. Martin to approve the minutes of November 9, 2016 as presented. All votes were affirmative; motion passed.

B. Director's Report

Kevin Robins, Executive Director Designee, updated the Airport Advisory Board regarding current events.

- Robins informed the Board that the Airport continues to have strong passenger growth. As of the end of November, our 12 month rolling average exceeded 23 million.
- Robins stated that the Airport had finished the process of meeting with the bond rating agencies. The Airport received favorable rating and that the expected schedule for pricing currently is February 8. The expected closing date of this first tranche of bonds is February 22.

Larry Pinnock asked if the tranche of bonds will be on an as needed basis and if the price is set going forward with each tranche. Ryan Tesch answered that is correct and the Airport envisions two more bond issuances probably in 2019 and 2021. It will be based on the progression of the construction and based on the needs.

C. Fort Lauderdale Incident Update

Craig Vargo, Police Chief, and Nancy Volmer, Director of Public Relations and Marketing presented an update on the recent Fort Lauderdale incident. Main points included were:

- Update on how the Airport responded to the incident using three main talking points. The first is that the Airport maintains a high level of security 24/7 to ensure public and passenger's security. The second is that the Fort Lauderdale shooting appeared to be an isolated incident and Salt Lake City was not planning on making any changes in security. The third was to reassure the public.
- The goal of the crisis communication plan is to be accurate and credible.
- The Airport operates at a high security level at all times.
- The Airport has an emergency plan in place which is a cycle of planning, training, exercising, evaluating and taking corrective action to ensure the highest level of security.

Best-Devereux acknowledged that the Airport has a response process in place that is carefully thought out and refined but wondered if there was anything more the Airport could do to prevent an incident happening here. Vargo answered that current regulations and laws do not prohibit individuals from having a firearm in checked baggage. Airport police maintain a strong presence and will approach and talk with individuals.

Cyndy Miller asked if the State, County, City and Airport emergency responders were able to share the same radio frequencies, Vargo responded that they do.

J.T. Martin inquired if notification was given to the Airport police of weapons in checked bagged. Vargo replied that police do not have a role in that specifically unless there is an undeclared weapon found in a bag. The role is exclusively the TSA's.

D. Terminal Redevelopment Program Update

Mike Williams, Terminal Redevelopment Program (TRP) Director, presented an update on the TRP (presentation on file). Main points included were:

- CGMP #3 – South Parking Lot/Quick Turn-Around/Remote Service Sites current status
- CGMP #4 – Landside and Airside Enabling status
- CGMP #5 – Terminal/South Concourse West/Gateway status
- CGMP #6 – Roadways/Parking Garage/Central Utility Plant status
- CGMP #7 – Baggage Handling System status
- North Concourse Project status
- Overall program construction and paving sequence
- Overall capital program costs

Martin asked if the Airport is prepared and able to share information regarding the dewatering process here with future developers in the area. Williams answered that they are prepared and share information with colleagues constantly.

E. General Aviation Update

John Buckner, Director of Commercial/Administration, presented an update regarding general aviation (presentation on file). Main points included were:

- SLCDCA System of Airports
- General aviation – corporate aviation vs. recreational aviation
- SLC east side property, general aviation zones, T-hangar summary, FBO's and capital improvement projects.
- South Valley Regional Airport overview, T-hangar summary, operations, future development and capital improvement projects.
- Tooele Valley Airport overview, operations, future development and capital improvement projects.
- General aviation limitations and key opportunities

Senator Mayne asked if the Airport was aware of any legislation that would affect South Valley Regional Airport, if the National Guard was contemplating moving and if in calculating growth at South Valley Regional, the Airport looked at the future growth on the west side. Buckner replied that he was unaware of any legislation at this time. The National Guard, several years ago, had contemplated moving some of their operations from South Valley Regional but decided against it. The National Guard has invested in the facilities at South Valley Regional the last few

years. The Airport is aware of the possible growth on the west bench and continues to look at that closely.

Miller inquired on the possibility of having the master plan for the airport system updated. Robins responded that the Airport is finalizing the request for proposal for a master plan to look at the capacity of the system of airports and update the plan.

Discussion ensued regarding T-hangars, current rental rates, hangar rental market rates, limitations on number of aircraft that can be based at South Valley Regional, hangar lease language and economic concerns. The motion was made by Cyndy Miller and seconded by Senator Karen Mayne to suggest to the Mayor that there be a General Aviation subcommittee to be able to assist the Airport staff in the review of the economics of the reliever airports, to assist in the future planning of those airports, to incorporate a review of the lease rate schedule and this be an ad hoc over the calendar year. All votes were affirmative; motion carried.

Patrick Leary stated that in addition to the economic parameters around the reliever airports there is a logistical piece that is necessary. Leary wondered what the logistical impact would be to the Airport without the reliever airports. Buckner stated that the reliever airports are designated for sky diving and banner towing activities as examples of aviation activities that are better suited at a reliever airport.

Leary updated the Board that the Mayor had forwarded an amendment to the Advisory Board ordinance to the City Council to allow for an elected official sitting in these two local municipalities to sit on the Board. The ordinance was adopted last night.

F. Election of Advisory Board Chair and Vice-Chair for 2017

Igor Best-Devereux called for a vote by acclamation on the nomination of J.T. Martin as Airport Advisory Board Chair and for Larry Pinnock as Vice Chair of the Airport Advisory Board for 2017. All votes were affirmative.

The Board Chair for 2017 is J.T. Martin and the Vice-Chair is Larry Pinnock.

The next Board meeting will be held the February 15, 2017.

Igor Best-Devereux adjourned the meeting at 9:46 a.m.

J.T. Martin, Chair

Date

Jacqueline M. Biskupski, Mayor

Date

SALT LAKE CITY DEPARTMENT OF AIRPORTS MINUTES OF ADVISORY BOARD WORK SESSION

14 December 2016

Members Present: Igor Best-Devereux - Chair
J.T. Martin, Vice - Chair
Robert Bergman
Senator Karen Mayne
Cyndy Miller
Larry Pinnock

Excused: Mickey Gallivan
Natalie Gochnour
Sam Granato

Mayor's Office: Patrick Leary

City Council Office: James Rogers

Department of Airports: Maureen Riley, Executive Director
Treber Andersen, Operations Manager
Larry Bowers, Operations Manager
John Buckner, Director of Administration & Commercial Services
Ed Cherry, Director of Information Technology
LuJean Christensen, Management Support Coordinator
Eddie Clayson, Director of Maintenance
Pete Higgins, Director of Operations
Marco Kunz, Attorney
Allen McCandless, Director of Planning
Kevin Robins, Director of Engineering
Ryan Tesch, Director of Finance
Craig Vargo, Police Chief
Nancy Volmer, Director of Public Relations & Marketing
Mike Williams, TRP Program Director

Chair Igor Best-Devereux called the meeting to order at 8:01 a.m.

AGENDA

A. Director's Report

Maureen Riley, Executive Director, updated the Airport Advisory Board regarding current events.

- Riley stated that the bond sale is scheduled for early February and will close the end of February. The City Council is scheduled to approve the sale of the bonds at the January 3rd meeting.
- Riley stated that the City Council approved the budget amendment last night.
- The TSA is preparing for an increased passenger traffic for the holidays.

B. Terminal Redevelopment Program Update

Mike Williams, Terminal Redevelopment Program (TRP) Director, presented an update on the TRP (presentation on file). Main points included were:

- Job progress in the Terminal/Gateway area
- Steel piles for the Terminal tunnel deep foundation
- West lift station progress
- Terminal tunnel excavation
- CGMP #4 – Enabling work

J.T. Martin inquired on how much dewatering was taking place on the project. Williams responded that on a routine daily basis they are pulling 200 gallons a minute out.

Larry Pinnock asked how deep the steel piles were being driven. Williams stated that the piles were up to 120 feet deep in certain areas but the average depth is between 60' and 70'.

C. Public Meetings Training

Marco Kunz, Senior City Attorney, presented the “Open and Public Meetings Training” which is required by the State law to the Board (presentation on file). Main points included were:

- Notice of meetings annual schedule, and posting requirements.
- Records of open meetings both written minutes and a recording are required.
- Many situations are fact specific. If issues arise, please contact Kunz or someone at the City Attorney’s office for specific advice.
- All communications – emails, letters, etc. – are subject to GRAMA requests.
- GRAMA is all inclusive and extensive.

D. Powers and Duties of the Airport Board

Margaret Plane, City Attorney, presented a review of the powers and duties of the Airport Board. Main points included were:

- City Boards are established by the City Council to assistance the operation of City government.
- City has more than 20 Boards established by ordinance.
- Board designed to make recommendations about policy, budgets, and use of properties to the Mayor.

- Power and duty to establish rules and regulations for the conduct by which the Board governs itself.
- Have the power to consider rules and regulations that the Board would like to recommend to the Airport to enhance, foster and promote air transportation and for the conduct of the business of the Airport and its facilities.
- The Board can make a recommendation to the Mayor on the appointment and/or removal of the director of airports.
- To recommend the approval of construction and expansion projects at the Airport.
- Determine broad matters of policy regarding the operation and management of the airport.
- Review the annual budget.
- Assist the director of airports in every way possible for the continuing orderly development and promotion of the airport in order to best serve the local and regional requirements for airport service.

Best-Devereux asked what the liability is as Board members. Plane answered that the City doesn't carry Directors and Officers (D&O) liability insurance but volunteer public servants have specific coverage in State code that obviates the need for robust D&O liability policy.

Senator Mayne inquired if the Airport Board had an independent counsel or if it was under the umbrella of the City. Plane responded that it was under the umbrella of the City because they were here to assist the operation of the city government.

Martin inquired if the Board should be reviewing leases for space and concessions at the Airport. The recent contract awarded to Kellerstrass for the convenience store had not been presented to the Board for review. Plane reminded the Board that the ordinance makes clear that all of this is subject to other laws applicable such as federal law, state law or city code which may require certain procurement processes. Riley stated that the Airport, when it does anything that relates to leases, goes through a procurement process which is subject to a different ordinance. Plane stated that the City does have rules, regulations, ordinances passed by the City Council regarding procurement and how vendors are selected, how leases are entered, and those have to be followed first and foremost.

Miller asked if the Mayor could establish a policy that the Board needed to review every budget amendment before it goes to City Council, or approve contracts in excess of \$2M. Plane answered that the Mayor can ask for a certain level of recommendation from any board but what the Mayor cannot do is ask the board to do something that goes beyond what City Council has established. The Mayor could request a robust review process but remember that the work that John Buckner's team does, for instance, is high level, very detailed, very professional and we have to be cognizant of the time and energy that this Board has and the Airport staff has.

Plane stated that she would send the link to the City Code out to the Board members.

E. Ground Transportation Update

Nancy Volmer, Director of Public Relations and Marketing, and Larry Bowers, Operations Manager, presented a ground transportation update (presentation on file). Main points included were:

- Ground transportation timeline
- Staging lot
- Recent developments
- Construction impact
- Market conditions – transportation network companies
- Market conditions – on-demand providers
- Automated vehicle identification (AVI)
- Average cost of a ride
- Customer feedback received

James Rogers inquired how the Airport notifies ground transportation providers the Airport needs more providers when large conventions come to town. Bowers answered that the ground transportation providers are notified days in advance of large conventions and the Airport has used other locations for additional staging lots during such events.

Discussion ensued regarding the complaints received and how the majority do not deal with transportation within the jurisdiction of the City. Best-Devereux wondered if there was a way to segment the public that was utilizing ground transportation to locations outside the City. If that group could be identified, additional communication or information, with expected average fares, could be provided. Bowers answered that approach would be labor intensive and reminded the Board that 51 complaints is a relatively small number of complaints in a year period.

Martin inquired on how the Airport can communicate with the public more effectively. Bowers stated that the Operations Division has created a training program for the individuals that provide services at the cab stands, staging area and enforcement. The training focuses on customer service and working with customers to help them understand their options. Best-Devereux asked why there was a reluctance to handing out a sheet of paper with the information on it. Riley replied that the average fare can change at any time and that would generate a different kind of complaint. The Airport has signs on the baggage carousels and at the ground transportation desks. The Airport is getting ready to install a digital signage band at each checkpoint. This will give the Airport the ability to change the messages frequently and one of the messages could communicate ground transportation options and fares.

Riley informed the Board that currently a temporary waiver for rate restrictions has to be issued every six months under the current ordinance.

Best-Devereux recommended the Board advise the Mayor to make the Salt Lake City waiver more permanent and to work with other jurisdictions to extend the fare provision to county areas, including Summit and Salt Lake County.

F. Nominations for Board Chair and Vice-Chair for 2017

The motion was made by Cyndy Miller to nominate J.T. Martin as Airport Advisory Board Chair for 2017.

The motion was made by Igor Best-Devereux to close nominations for Board Chair. All votes were affirmative; motion passed.

The motion was made by Senator Karen Mayne to nominate Larry Pinnock as Airport Advisory Board Vice-Chair for 2017.

The motion was made by Igor Best-Devereux to close nominations for Board Vice-Chair. All votes were affirmative; motion passed.

Voting by acclamation will be conducted at the January Advisory Board meeting, scheduled on 18 January 2017.

The next Board meeting will be held the January 18, 2017.

Igor Best-Devereux adjourned the meeting at 9:51 a.m.

Igor Best-Devereux, Chair

Date

Jacqueline M. Biskupski, Mayor

Date

DEPARTMENT OF AIRPORTS
BOARD MEETING

15 February 2017

DISCUSSION ITEMS

SALT LAKE CITY AIRPORT BOARD

AGENDA: DISCUSSION ITEM (B)
DATE: 15 February 2017
TO: Airport Board
FROM: Kevin Robins, Executive Director Designee
SUBJECT: **Executive Director's Report**

Kevin Robins will present a monthly informational report to the Board, including:

1. TRP progress
2. Ground transportation update

Other discussion items may include:

1. Concessions and rental cars
2. Airport safety and security
3. Airport facilities and operations
4. General aviation
5. Passenger and airport users
6. Environmental matters
7. Financial condition
8. Legislative issues
9. Airlines
10. Communications and marketing

SALT LAKE CITY AIRPORT BOARD

AGENDA: DISCUSSION ITEM (C)
DATE: 15 February 2017
TO: Airport Board
FROM: Kevin Robins, Executive Director Designee
SUBJECT: **Legislative Update**

Robert Bergman, Airport Lobbyist, will present a legislative update.

SALT LAKE CITY AIRPORT BOARD

AGENDA: DISCUSSION ITEM (D)
DATE: 15 February 2017
TO: Airport Board
FROM: Kevin Robins, Executive Director Designee
SUBJECT: **Terminal Redevelopment Program Update**

Mike Williams, Terminal Redevelopment Program (TRP) Director, will present an update on the SLC Terminal Redevelopment Program (presentation on file).

SLC Terminal Redevelopment Program

Status Update: 02-15-2017



Salt Lake City International Airport



CGMP# 3 – South Parking Lot/QTA/RSS


PROJECT: CGMP# 3 – South Parking
Lot/QTA/RSS/Civil Enabling Ph 1

BUDGET: \$94.00M EAC: \$88.50M

ECD: 3/1/2016

South Parking Lot Replacement Parking, Civil Enabling, East Lift Station and new Rental Car Quick Turn-Around (QTA) and Remote Service Sites (RSS)

CURRENT STATUS

SCHEDULE		BUDGET
SCHEDULE		RECENT MILESTONES ACHIEVED
Substantial Completion	Feb 2016 A	<ul style="list-style-type: none"> • East Lift Station Substantial Completion Certificate Submitted. • Final Invoicing Submitted.
Fully Operational	Mar 2016 A	
Commission East Lift Station	Nov 2016 A	
Complete Requested Tenant Projects	Dec 2016 A	
CGMP-03 Closeout	Feb 2017	
CONCERNS/ISSUES/RISKS		
<ul style="list-style-type: none"> • None 		


CGMP# 4 – Landside and Airside Enabling

PROJECT: CGMP# 4 – Landside and Airside Enabling BUDGET: \$81.09M EAC: \$81.09M

ECD: 7/31/2017

Terminal/South Concourse West/Roadways Airside and Landside Enabling and Central Utility Plant Hydronic Piping

CURRENT STATUS

SCHEDULE		BUDGET
SCHEDULE		RECENT MILESTONES ACHIEVED
Complete Seq2 Tunnel Excavation	Dec 2016	<ul style="list-style-type: none"> Utility work proceeding ahead of schedule
Complete West Concourse Surcharge	Dec 2016 A	
Complete West Lift Station Pumps and Building	Mar 2017	
Complete West Concourse Ductbank – South Ph 1	Feb 2017	
Complete CUP Hydronic piping to Gateway	Dec 2017	
Substantial Completion	July 2017	
CONCERNS/ISSUES/RISKS		
<ul style="list-style-type: none"> Excavation, Shoring and Dewatering Activities initiated for Existing SCW Mid-Concourse Tunnel 		



CGMP# 5 – Terminal/South Concourse West/Gateway


PROJECT: CGMP# 5 –
Terminal/Gateway/South
Concourse West

BUDGET: \$795.35M EAC: \$795.35M

ECD: 8/24/2020

Terminal/Gateway/South Concourse West – Foundations, Structure, Building Envelope and Build-out

CURRENT STATUS

SCHEDULE		BUDGET
SCHEDULE		RECENT MILESTONES ACHIEVED
Start Driven Piles	Dec 2016 A	<ul style="list-style-type: none"> Received Drywall bids for revised scope Completed 1366 of 3,146 Driven Piles to Date Pile Driving is 43% complete and is approximately four weeks ahead of schedule.
Complete Terminal Tunnel Backfill	Sep 2017	
Complete SCW Slab on Grade	Sep 2017	
Complete SCW Structural Steel	Nov 2017	
Terminal Foundations Complete	Feb 2018	
Complete Terminal Structural Steel	Jul 2019	
Complete Terminal Skin & Curtain Wall	Feb 2019	
Substantial Completion	Aug 2020	
CONCERNS/ISSUES/RISKS		
<ul style="list-style-type: none"> Award Drywall scope of work to support spring 2017 start of exterior studs. 		



CGMP# 6 – Roadways/Parking Garage/Central Utility Plant

PROJECT: CGMP# 6 – Parking
Garage/Roadways/Central Utility
Plant/Project-Wide Special Systems

BUDGET: \$363.86M EAC: \$363.86M

ECD: 8/24/2020

Parking Garage/Rental Car Ready Return/Elevated and At-Grade Roadways/Central Utility
Plant/Project-Wide IT and Special Systems

CURRENT STATUS

SCHEDULE		BUDGET
SCHEDULE		RECENT MILESTONES ACHIEVED
Issue NTP	Dec 2016 A	<ul style="list-style-type: none"> Initiated underground utility work activities.
Start Elevated Roadway Bent Construction	Apr 2017	
Complete CUP Chiller Installation	Dec 2017	
CUP Operational	Mar 2018	
Parking Garage Roofing Complete	Aug 2019	
Parking Garage Helix Complete	Oct 2019	
Elevated Roadway Spans Complete	Oct 2019	
Parking Garage Structure Complete	Nov 2019	
Substantial Completion	Aug 2020	
CONCERNS/ISSUES/RISKS		
<ul style="list-style-type: none"> Potential for additional Rental Car Ready/Return Level requested changes. Close final SLC Building Services comments to receive Building Permit. 		



CGMP# 7 – Baggage Handling System

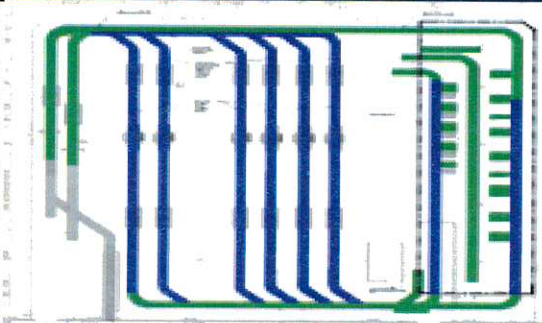
PROJECT: CGMP# 7 – Baggage Handling System including TSA Screening Area

BUDGET: \$86.09M EAC: \$86.09M

ECD: 5/26/2020

Terminal/Gateway/South Concourse West and TSA Screening Area Complete Baggage Handling System

CURRENT STATUS

SCHEDULE	BUDGET										
SCHEDULE	RECENT MILESTONES ACHIEVED										
<table border="1"> <tr> <td>Issue NTP</td> <td>Sep 2016 A</td> </tr> <tr> <td>Start Baggage Handling System Installation in Terminal</td> <td>Aug 2017</td> </tr> <tr> <td>Start Installation of TSA Provided Equipment</td> <td>Jun 2019</td> </tr> <tr> <td>Start TSA BHS Acceptance Testing</td> <td>Mar 2020</td> </tr> <tr> <td>Substantial Completion</td> <td>May 2020</td> </tr> </table>	Issue NTP	Sep 2016 A	Start Baggage Handling System Installation in Terminal	Aug 2017	Start Installation of TSA Provided Equipment	Jun 2019	Start TSA BHS Acceptance Testing	Mar 2020	Substantial Completion	May 2020	<ul style="list-style-type: none"> Initiated TSA invoicing.
Issue NTP	Sep 2016 A										
Start Baggage Handling System Installation in Terminal	Aug 2017										
Start Installation of TSA Provided Equipment	Jun 2019										
Start TSA BHS Acceptance Testing	Mar 2020										
Substantial Completion	May 2020										
CONCERNS/ISSUES/RISKS											
<ul style="list-style-type: none"> None 											




North Concourse Project

PROJECT: North Concourse Project

BUDGET: \$737M EAC: TBD

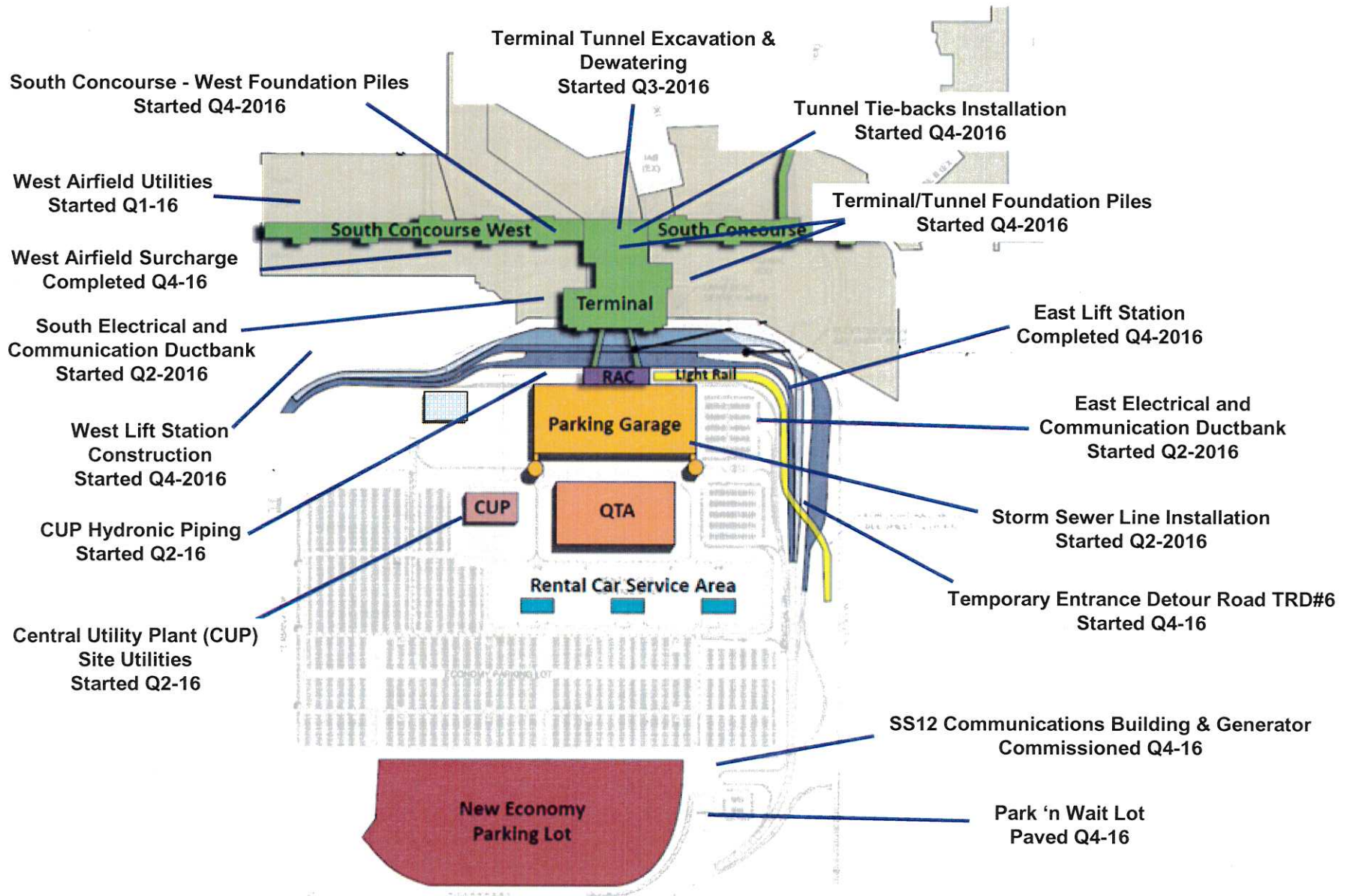
North Concourse Phase 1 and Phase 2 and Associated Airfield Scopes of Work.

CURRENT STATUS

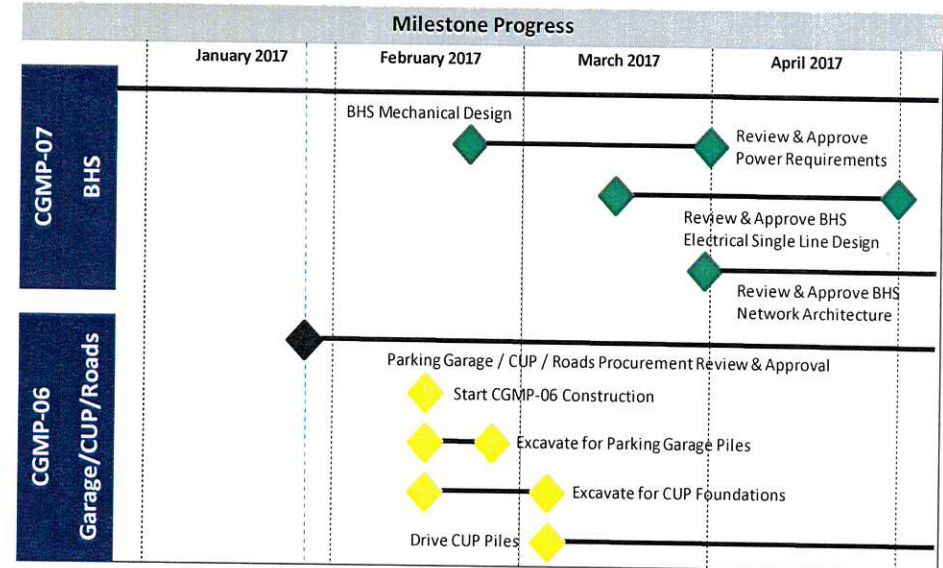
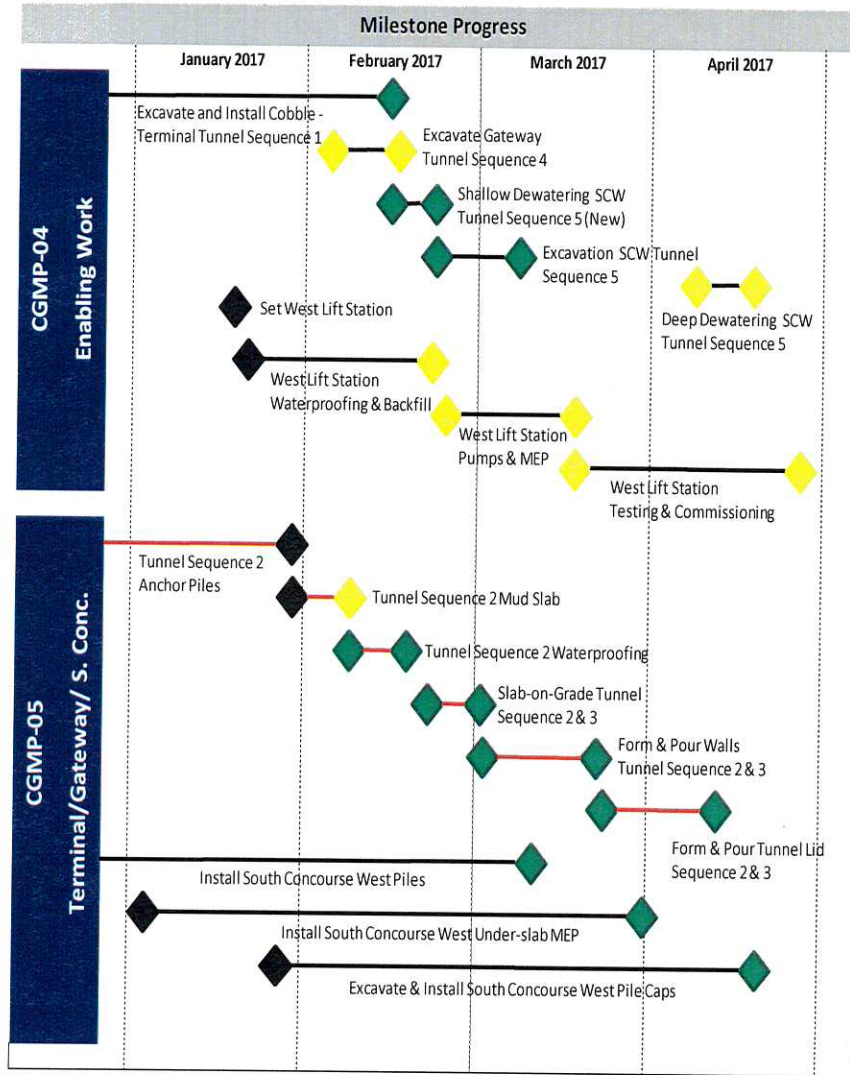
SCHEDULE		BUDGET
SCHEDULE		RECENT MILESTONES ACHIEVED
Issue Draft Program Report	Nov 2016 A	<ul style="list-style-type: none"> Initiated Contract Negotiations with Number One Ranked CMAR. Issued Design NTP to HOK Received and reviewed the HOK Estimating Consultant's Concept Estimate
Receive CMAR RFQ Responses	Dec 2016 A	
CMAR Interviews	Jan 2017 A	
Start Design Phase	Jan 2017 A	
CMAR NTP	Mar 2017	
CONCERNS/ISSUES/RISKS		
<ul style="list-style-type: none"> Need Concept Budget/Scope Agreement HOK Design Phase Starting Later than Planned. Need to Establish Detailed Design Schedule 		



Overall Program Construction & Paving Sequence



Near Term Schedule



- Critical
- Data Date
- ◆ Achieved
- ◆ Float Lost
- ◆ On Target
- ◆ Late

Overall Capital Program Costs

Construction Budget January 2017	Budget	Spent	Committed	Uncommitted	Pending	EAC
Preconstruction Services	\$ 9,575,407	\$ 9,622,403	\$ 9,575,407	\$ -	\$ -	\$ 9,575,407
General Conditions Services	\$ 89,721,178	\$ 24,602,247	\$ 78,593,872	\$ 11,127,306	\$ -	\$ 89,721,178
CGMP 03 - QTA, RSS, South Parking Lot	\$ 94,000,000	\$ 88,573,107	\$ 94,000,000	\$ -	\$ -	\$ 88,576,107
CGMP 04 - Landside/Airside Enabling Work	\$ 81,096,442	\$ 62,645,744	\$ 81,096,442	\$ -	\$ -	\$ 81,096,442
CGMP 05 - Terminal, South Concourse West , Gateway	\$ 795,346,442	\$ 13,930,634	\$ 795,346,442	\$ -	\$ -	\$ 795,346,442
CGMP 06 - Parking Deck, Roadways, Central Utility Plant	\$ 363,855,782	\$ -	\$ 363,855,782	\$ -	\$ -	\$ 363,855,782
CGMP 07 - Baggage Handling System	\$ 86,085,766	\$ 1,446,209	\$ 86,085,766	\$ -	\$ -	\$ 86,085,766
CGMP 08 - Not Used	\$ -	\$ -	\$ -	\$ -	\$ -	\$ -
CGMP 09 - Apron Paving SCW/Hydrant Fueling	\$ 40,720,850	\$ -	\$ -	\$ 40,720,850	\$ 16,550,556	\$ 57,271,406
CGMP 10 - South Concourse East	\$ 178,526,392	\$ -	\$ -	\$ 178,526,392	\$ 35,317,023	\$ 213,843,415
CGMP 11 - Apron Paving SCE/Hydrant Fueling	\$ 51,007,837	\$ -	\$ -	\$ 51,007,837	\$ 25,297,059	\$ 76,304,896
Total Construction Budget	\$ 1,789,936,096	\$ 200,820,344	\$ 1,508,553,711	\$ 281,382,385	\$ 77,164,638	\$ 1,861,676,841
Soft Cost Budget	\$ 251,316,222	\$ 126,904,178	\$ 152,449,051	\$ 98,867,171	\$ -	\$ 251,316,222
Owners Reserve	\$ 135,300,674	\$ -	\$ -	\$ 135,300,674	\$ -	\$ 63,559,929
Total TRP Phase 1 Budget	\$ 2,176,552,990	\$ 327,724,522	\$ 1,661,002,762	\$ 515,550,230	\$ 77,164,638	\$ 2,176,552,992
North Concourse Budget	\$ 737,000,000	\$ 1,625,073	\$ 29,818,792	\$ 707,181,208	\$ -	\$ 737,000,000
CIP Multi-Year Budget	\$ 225,402,000	\$ -	\$ -	\$ 225,402,000	\$ -	\$ 225,402,000
Total Capital Program Budget	\$ 3,138,954,990	\$ 329,349,595	\$ 1,690,821,554	\$ 1,448,133,438	\$ 77,164,638	\$ 3,138,954,992

Job Progress Photos



Waterproofing application started in Terminal Tunnel.



Setting West Lift Station and pumps on structure.



Excavation and wall tie-backs continue in Tunnel Sequence 4.



Terminal Tunnel excavation and lagging at Tunnel Sequence 1.

Job Progress Photos



H-pile, many cut and capped, installed in the Terminal Basement.



Pile driving crane rig working its way out of Tunnel Sequence 2



Heated shelter allowing West Lift Station waterproofing application and curing.



Under-slab piping installation at South Concourse West.



Job Progress Photos



Cranes at work on the South Concourse West building pad.



Mud slab pour in Terminal Basement Level 0.

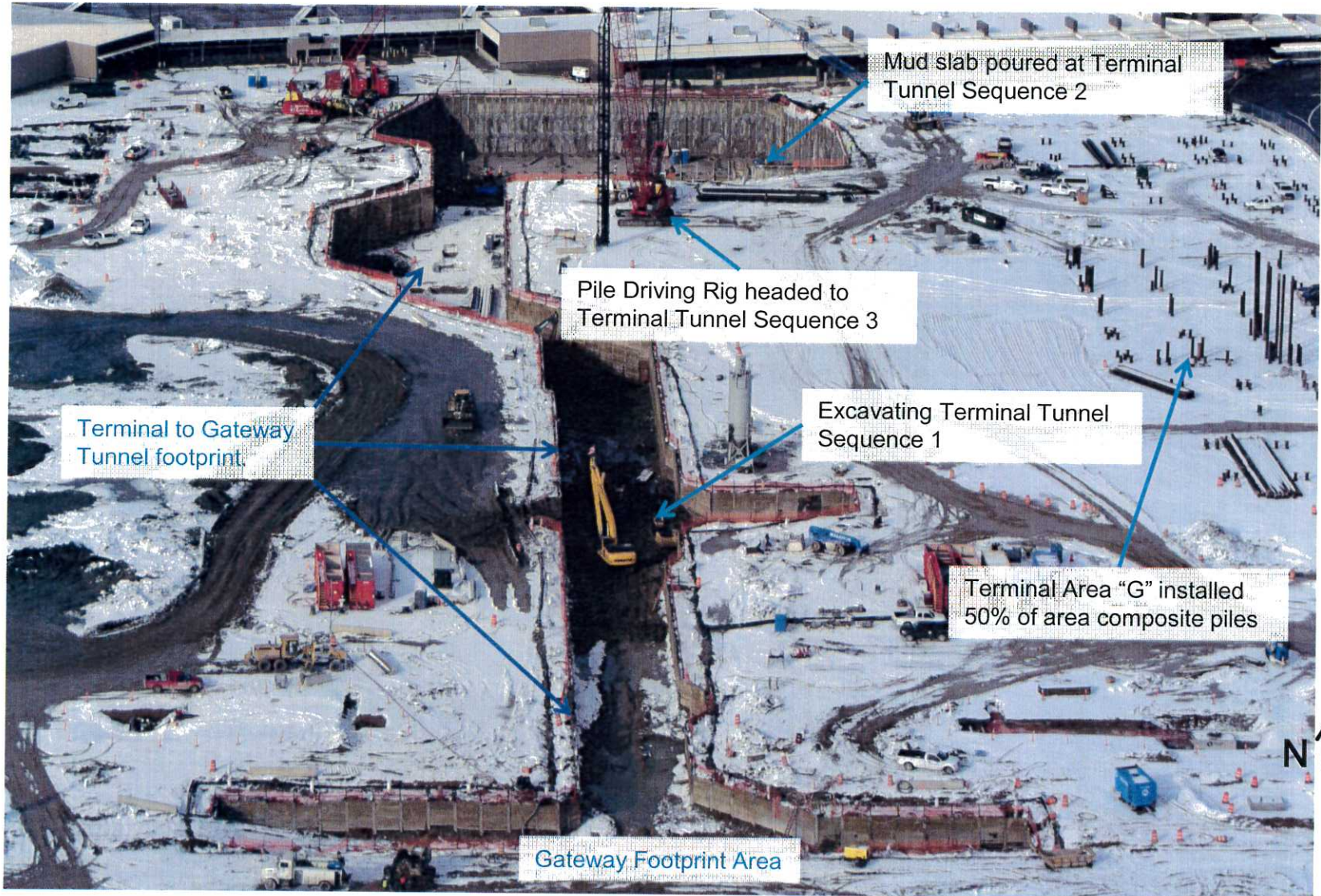


Drilling dewatering wells at existing Airfield Tunnel Sequence 5.



Pre-tied rebar for South Concourse West pile caps

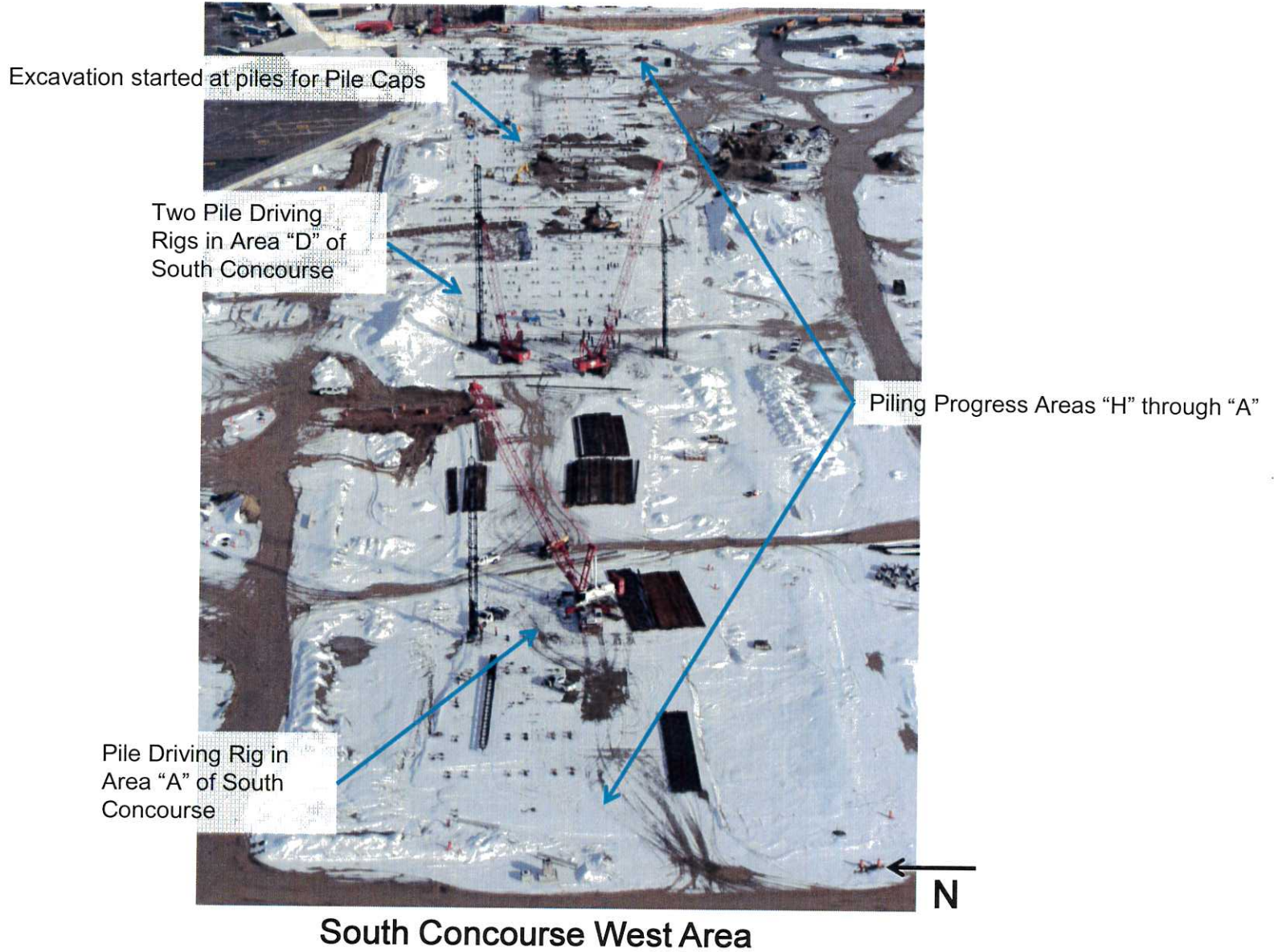
Job Progress Aerials



Terminal / Gateway Area



Job Progress Aerials



Job Progress Aerials



Wright Brothers Road Contractor Parking Lot.



Terminal Tunnel Sequence 2 area detail.



Terminal Tunnel Sequence 3 area detail.

SALT LAKE CITY AIRPORT BOARD

AGENDA: DISCUSSION ITEM (E)
DATE: 15 February 2017
TO: Airport Board
FROM: Kevin Robins, Executive Director Designee
SUBJECT: **Airspace Briefing**

Al Stuart, Operations Superintendent, SLCDA; Kenneth Whitaker, Support Manager, Salt Lake Terminal Radar Approach Control (TRACON); and Mark Durtschi, Traffic Management Supervisor, Salt Lake Terminal Radar Approach Control (TRACON) will present an airspace briefing (presentation on file).



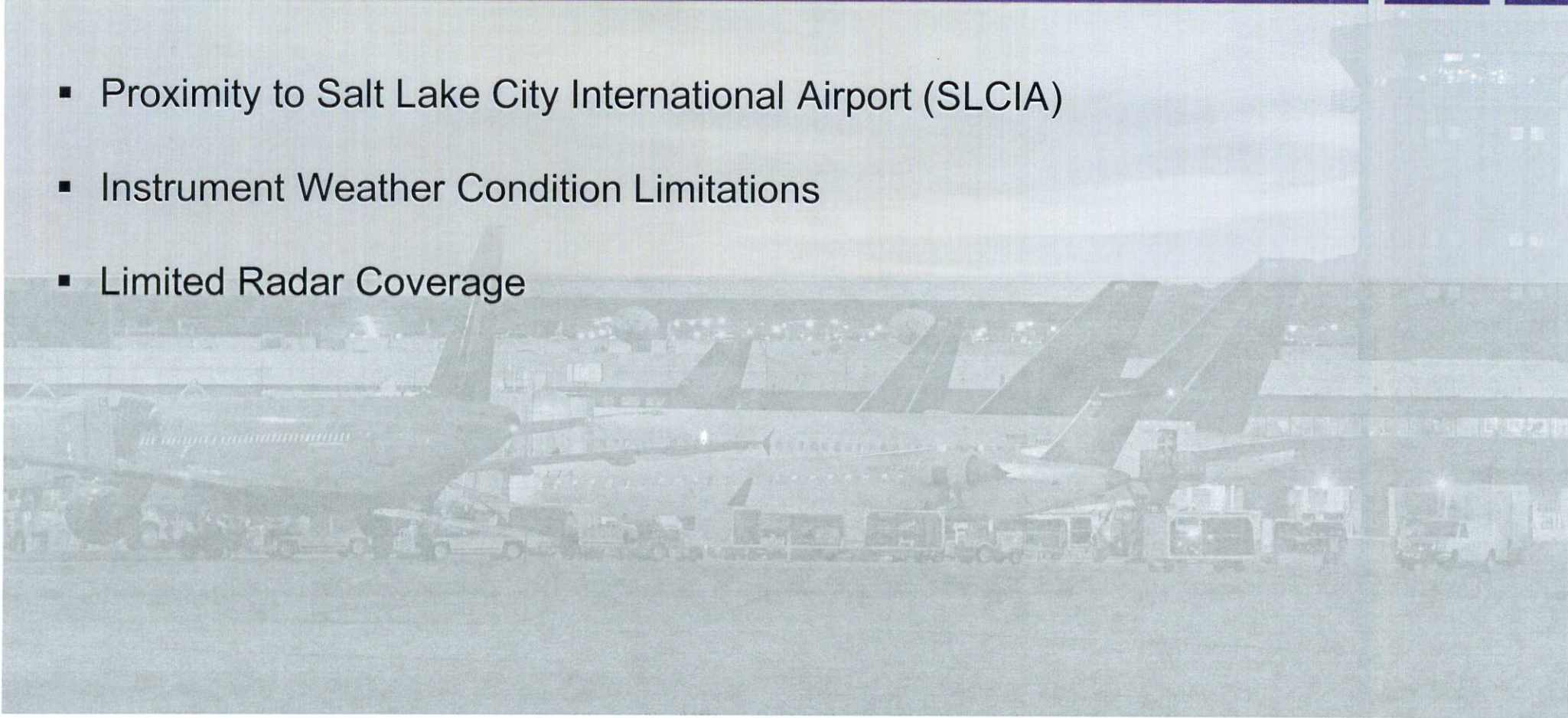
SLCIA AND U42 (SVR) AIRSPACE BRIEFING

February 15, 2017

South Valley Airport Instrument Approach Limitations



- Proximity to Salt Lake City International Airport (SLCIA)
- Instrument Weather Condition Limitations
- Limited Radar Coverage



Proximity to Salt Lake City International Airport

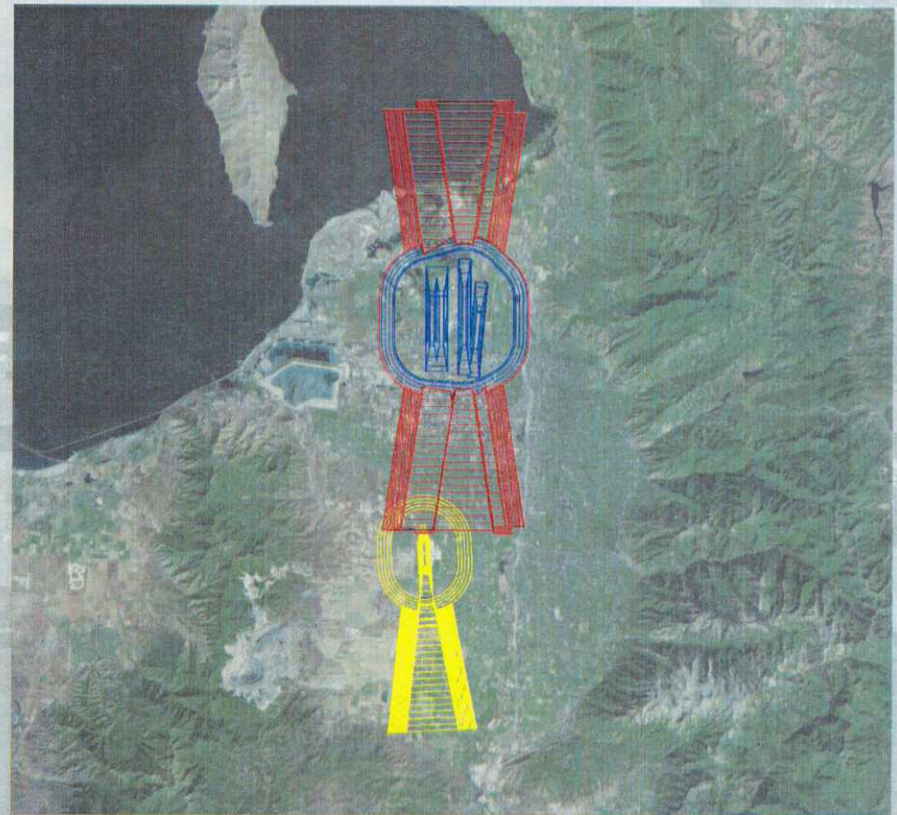
- South Valley Regional Airport lies approximately 10 miles south of SLCIA
- South Valley instrument traffic would have to approach from the north or south
- Both airports have north/south aligned runways



Proximity to Salt Lake City International Airport



- South Valley Regional lies beneath the extended runway centerline for SLCIA
- South Valley Regional lies beneath every SLCIA arriving/departing aircraft



SVR Missed Approach Path



DEPARTMENT OF AIRPORTS
BOARD MEETING

15 February 2017

INFORMATIONAL ITEMS

SALT LAKE CITY DEPARTMENT OF AIRPORTS
(An Enterprise Fund of Salt Lake City Corporation)
Statements of Net Position (Unaudited)

<i>December 31,</i>	2016	2015
ASSETS		
Current Assets		
Cash and cash equivalents		
Unrestricted	\$ 10,000,000	\$ 10,000,000
Designated for future development	128,415,690	136,042,093
Airline and rental fees receivable	14,645,819	14,098,440
Other current assets	4,637,183	3,977,104
Total current assets	157,698,692	164,117,637
Noncurrent Assets		
Restricted cash and cash equivalents		
Construction projects	141,576,576	113,080,512
Customer facility charges	2,588,828	63,357,418
Operation and maintenance reserve fund	16,256,567	15,669,933
Renewal and replacement reserve fund	5,000,000	5,000,000
Noncurrent investments	44,950,842	44,950,842
Total noncurrent assets and investments	210,372,813	242,058,705
Capital assets		
Land	99,346,721	99,156,549
Building and improvements	1,278,012,265	1,177,910,127
Equipment	140,190,926	133,821,404
Construction in progress	314,822,399	260,238,026
Total capital assets - at cost	1,832,372,311	1,671,126,106
Less accumulated depreciation	900,115,605	848,269,003
Net capital assets	932,256,706	822,857,103
Other assets		
Other receivables	1,189,506	898,838
Other long-term assets	14,489	99,545
Total other assets	1,203,995	998,383
Total noncurrent assets	1,143,833,514	1,065,914,191
Total Assets	\$ 1,301,532,205	\$ 1,230,031,829
Deferred Outflows of Resources		
Pensions	10,181,182	3,566,983
Total assets and deferred outflows of resources	\$ 1,311,713,387	\$ 1,233,598,812

SALT LAKE CITY DEPARTMENT OF AIRPORTS
(An Enterprise Fund of Salt Lake City Corporation)
Statements of Net Position (Unaudited)

<i>December 31,</i>	2016	2015
LIABILITIES		
Current Liabilities		
Accounts payable	\$ 7,784,340	\$ 4,684,222
Accrued compensation	924,465	2,351,058
Net OPEB obligation	-	235,690
Other accrued liabilities	4,767,523	5,565,475
Deposits and advance rentals	4,068,484	3,803,840
Total current liabilities	17,544,812	16,640,285
Noncurrent Liabilities		
Noncurrent compensation liability	3,629,123	3,682,739
Net pension liability	25,465,134	20,232,458
Pollution remediation liability	171,586	186,082
Other long-term liabilities	3,897,776	3,061,182
Total noncurrent liabilities	33,163,619	27,162,461
Total Liabilities	50,708,431	43,802,746
Deferred Inflows of Resources		
Pensions	1,937,268	2,128,856
NET POSITION		
Restricted for construction projects	141,576,576	113,080,512
Restricted for customer facility charges	2,588,828	63,357,418
Restricted for operation and maintenance reserve fund	16,256,567	15,669,933
Restricted for renewal and replacement reserve fund	5,000,000	5,000,000
Total Restricted	165,421,971	197,107,863
Net investment in capital assets	932,256,706	822,857,103
Unrestricted	161,389,011	167,702,245
Net Position	\$ 1,259,067,688	\$ 1,187,667,211
Total liabilities, deferred inflows of resources, and net position	\$ 1,311,713,387	\$ 1,233,598,812

SALT LAKE CITY DEPARTMENT OF AIRPORTS
(An Enterprise Fund of Salt Lake City Corporation)
Statements of Revenues, Expenses and Changes in Fund Net Position (Unaudited)

<i>for the six month period ended December 31,</i>	2016	2015
Operating Revenues		
Airfield	\$ 17,573,329	\$ 15,692,907
Terminals	26,783,721	25,482,018
Landside	30,761,765	27,684,770
Auxiliary airports	867,335	429,453
General aviation	1,131,389	1,022,225
Support areas	3,714,896	3,557,824
Other	1,195,131	965,970
Operating revenues	82,027,566	74,835,167
Less airline revenue sharing	(5,913,756)	(4,750,356)
Total operating revenues	76,113,810	70,084,811
Operating Expenses		
Airfield	12,464,705	12,386,800
Terminals	19,257,378	18,303,461
Landside	5,785,272	5,739,522
Auxiliary airports	1,389,523	729,029
General aviation	481,413	533,149
Support areas	667,337	566,893
Roads and grounds	3,509,151	3,452,233
Other	1,278,646	1,297,121
Total operating expenses before depreciation	44,833,426	43,008,208
Operating Income Before Depreciation	31,280,385	27,076,603
Depreciation Expense	32,696,931	30,952,938
Operating Loss	(1,416,547)	(3,876,335)
Non-Operating Revenues (Expenses)		
Passenger facility charges	22,242,783	20,646,868
Customer facility charges	7,959,701	7,538,820
Gain on disposition of property and equipment	44,540	282,153
Interest income	1,149,734	959,517
Net decrease in the fair value of investments	(23,619)	-
Net non-operating income	31,373,139	29,427,358
Capital Contributions		
Contributions and grants, principally Airport Improvement Program	6,876,461	4,134,860
Total capital contributions	6,876,461	4,134,860
Net Position		
Increase in net position	36,833,054	29,685,883
Net Position, beginning of period	1,222,234,634	1,157,981,328
Net Position, end of period	\$ 1,259,067,688	\$ 1,187,667,211

SALT LAKE CITY DEPARTMENT OF AIRPORTS
(An Enterprise Fund of Salt Lake City Corporation)
Operating Revenues and Expenditures to Budget (Unaudited)

	JULY - Dec 2016 ACTUALS	JULY - Dec 2016 BUDGET	SURPLUS/ DEFICIT	PERCENT DIFFERENT
Revenues:				
Landing Fees	\$ 14,999,282	\$ 13,467,950	\$ 1,531,332	11.4%
Fuel Farm	264,044	264,000	44	0.0%
Aircraft Remain Overnight Fees	173,050	145,125	27,925	19.2%
Cargo Bldg. & Ramp Use Fee	807,479	800,350	7,129	0.9%
Security Charges to TSA	160,479	161,920	(1,441)	-0.9%
Extraordinary Service Charges	38,745	55,580	(16,835)	-30.3%
Passenger Loading Bridges	818,066	853,360	(35,294)	-4.1%
Tenant Telephone Fees	158,730	184,715	(25,985)	-14.1%
Terminal Rents	15,974,201	16,000,335	(26,134)	-0.2%
General Aviation Hangars	670,534	577,275	93,259	16.2%
FBO Hangars/Fuel Oil Royalty	167,578	300,805	(133,227)	-44.3%
Flight Kitchens	861,745	716,175	145,570	20.3%
Other Buildings & Office Space	2,707,309	2,686,970	20,339	0.8%
Food Service & Vending	5,319,042	5,003,350	315,692	6.3%
News/Gift Shop	2,940,049	2,783,895	156,154	5.6%
Car Rental	12,904,506	11,545,280	1,359,226	11.8%
Leased Site Areas	1,086,830	1,067,045	19,785	1.9%
Auto Parking/Ground Transportation	17,829,537	18,044,705	(215,168)	-1.2%
Advertising	616,526	563,305	53,221	9.4%
State Aviation Fuel Tax	1,544,366	1,401,045	143,321	10.2%
Military	38,428	73,380	(34,952)	-47.6%
Glycol Recycling Sales	192,350	154,980	37,370	24.1%
ARFF Training	350,582	447,935	(97,353)	-21.7%
Other	1,404,108	1,076,762	327,346	30.4%
Less: Airline Revenue Sharing	(5,913,756)	(5,535,600)	(378,156)	6.83%
Total Operating Revenues	76,113,810	72,840,642	3,273,169	4.5%
Expenses:				
Salary & Wages	16,758,379	16,873,948	115,569	0.7%
Employee Benefits	8,059,872	8,028,828	(31,044)	-0.4%
Maintenance Supplies	2,317,006	4,152,804	1,835,798	44.2%
Automotive Supplies	1,107,482	1,127,000	19,518	1.7%
Other Supplies	662,604	1,062,358	399,754	37.6%
Insurance Premiums	1,300,892	682,000	(618,892)	-90.7%
Janitorial Service	3,365,977	3,394,700	28,723	0.8%
Maintenance Contracts	842,196	795,100	(47,096)	-5.9%
Other Contractual Services	2,933,868	3,305,142	371,274	11.2%
Professional & Tech Service	1,319,630	1,704,213	384,583	22.6%
Utilities	3,348,082	3,667,000	318,918	8.7%
Administrative Service Fee	712,271	775,000	62,729	8.1%
Aircraft Rescue Fire Fighting	2,011,445	2,166,200	154,755	7.1%
Other Expenses	653,815	1,555,025	901,210	58.0%
Total Operating Expenses	45,393,519	49,289,318	3,895,799	7.9%
Capital Costs - E&M Division	560,094	560,094	-	0.0%
Total Operating Expense	44,833,426	48,729,224	3,895,799	8.0%
Operating Income	\$ 31,280,385	\$ 24,111,418	\$ 7,168,966	29.7%

SALT LAKE CITY DEPARTMENT OF AIRPORTS
(An Enterprise Fund of Salt Lake City Corporation)
Operating Revenues and Expenditures to Prior Year (Unaudited)

	JULY - DECEMBER 2016	JULY - DECEMBER 2015	SURPLUS/ (DEFICIT)	PERCENT CHANGE
Revenues:				
Landing Fees	\$ 14,999,282	\$ 13,205,606	\$ 1,793,676	13.6%
Fuel Farm	264,044	264,044	-	0.0%
Aircraft Remain Overnight Fees	173,050	114,550	58,500	51.1%
Cargo Bldg. & Ramp Use Fee	807,479	803,844	3,635	0.5%
Security Charges to TSA	160,479	109,801	50,678	46.2%
Extraordinary Service Charges	38,745	53,621	(14,877)	-27.7%
Passenger Loading Bridges	818,066	1,034,995	(216,929)	-21.0%
Tenant Telephone Fees	158,730	180,676	(21,946)	-12.1%
Terminal Rents	15,974,201	15,111,672	862,529	5.7%
Executive Terminal	-	32,738	(32,738)	-100.0%
General Aviation Hangars	670,534	567,097	103,437	18.2%
FBO Hangars/Fuel Oil Royalty	167,578	258,331	(90,753)	-35.1%
Flight Kitchens	861,745	699,956	161,789	23.1%
Other Buildings & Office Space	2,707,309	2,686,736	20,574	0.8%
Food Service & Vending	5,319,042	4,959,936	359,106	7.2%
News/Gift Shops	2,940,049	2,756,086	183,963	6.7%
Car Rental	12,904,506	10,058,094	2,846,411	28.3%
Leased Site Areas	1,086,830	966,612	120,217	12.4%
Auto Parking/Ground Transportation	17,829,537	17,595,518	234,020	1.3%
Advertising	616,526	548,194	68,332	12.5%
State Aviation Fuel Tax	1,544,366	1,438,630	105,736	7.3%
Military	38,428	32,354	6,074	18.8%
Glycol Recycling Sales	192,350	178,245	14,105	7.9%
ARFF Training	350,582	450,714	(100,132)	-22.2%
Other	1,404,108	727,116	676,992	93.1%
Less: Airline Revenue Sharing	(5,913,756)	(4,750,356)	(1,163,400)	24.5%
Operating Revenue	76,113,810	70,084,811	6,028,999	8.6%
Expenses:				
Salary & Wages	16,758,379	16,198,824	559,555	3.5%
Employee Benefits	8,059,872	7,568,703	491,168	6.5%
Maintenance Supplies	2,317,006	2,451,450	(134,444)	-5.5%
Automotive Supplies	1,107,482	886,940	220,542	24.9%
Other Supplies	662,604	508,745	153,859	30.2%
Insurance Premiums	1,300,892	330,869	970,023	293.2%
Janitorial Service	3,365,977	3,286,376	79,601	2.4%
Maintenance Contracts	842,196	926,987	(84,791)	-9.1%
Other Contractual Services	2,933,868	1,592,934	1,340,934	84.2%
Professional & Tech Service	1,319,630	2,888,946	(1,569,316)	-54.3%
Utilities	3,348,082	3,304,100	43,982	1.3%
Administrative Service Fee	712,271	629,194	83,077	13.2%
Aircraft Rescue Fire Fighting	2,011,445	2,167,580	(156,135)	-7.2%
Other Expenses	653,815	818,782	(164,967)	-20.1%
Total Operating Expenses	45,393,519	43,560,429	1,833,090	4.2%
Capital Costs - E&M Division	560,094	552,221	7,873	1.4%
Total Operating Expense	44,833,426	43,008,208	1,825,218	4.2%
Operating Income	\$ 31,280,385	\$ 27,076,603	\$ 4,203,781	15.5%



**SALT LAKE CITY INTERNATIONAL AIRPORT
AIR TRAFFIC STATISTICS AND ACTIVITY REPORT
TWELVE MONTHS ENDED DECEMBER 2016**

	DECEMBER 2016	CHANGE	YTD 2016	CHANGE	12 MO ROLLING Ending 12/2016	CHANGE
PASSENGERS						
<i>DOMESTIC</i>						
Enplaned	898,927	5.31%	11,207,893	3.86%	11,207,893	3.86%
Deplaned	928,956	5.40%	11,189,745	3.69%	11,189,745	3.69%
TOTAL DOMESTIC	1,827,883	5.35%	22,397,638	3.77%	22,397,638	3.77%
<i>INTERNATIONAL</i>						
Enplaned	30,744	53.09%	375,693	36.26%	375,693	36.26%
Deplaned	29,925	56.07%	384,114	36.25%	384,114	36.25%
TOTAL INTERNATIONAL	60,669	54.55%	759,807	36.25%	759,807	36.25%
TOTAL PASSENGERS	1,888,552	6.44%	23,157,445	4.59%	23,157,445	4.59%
LANDED WEIGHT						
Air Carriers	1,087,085,595	8.57%	12,938,471,205	5.60%	12,938,471,205	5.60%
Cargo Carriers	124,839,152	-10.86%	1,084,332,508	4.82%	1,084,332,508	4.82%
TOTAL LANDED WEIGHT (LBS)	1,211,924,747	6.18%	14,022,803,713	5.54%	14,022,803,713	5.54%
MAIL						
Enplaned	1,301,690	-9.66%	20,351,068	-15.59%	20,351,068	-15.59%
Deplaned	1,142,362	17.57%	10,079,410	-20.88%	10,079,410	-20.88%
TOTAL MAIL (LBS)	2,444,052	1.30%	30,430,478	-17.42%	30,430,478	-17.42%
CARGO						
Enplaned	16,748,597	-4.86%	165,813,786	-1.68%	165,813,786	-1.68%
Deplaned	19,759,393	8.11%	187,944,096	10.00%	187,944,096	10.00%
TOTAL CARGO (LBS)	36,507,990	1.75%	353,757,882	4.20%	353,757,882	4.20%
MAIL & CARGO						
Enplaned	8,374	-4.86%	82,907	-1.68%	82,907	-1.68%
Deplaned	9,880	8.11%	93,972	10.00%	93,972	10.00%
TOTAL MAIL & CARGO (TONS)	18,254	1.74%	176,879	4.20%	176,879	4.20%
AIRCRAFT OPERATIONS						
Passenger Aircraft	20,448	5.63%	243,476	4.25%	243,476	4.25%
All-Cargo Aircraft	2,102	3.55%	20,038	6.98%	20,038	6.98%
General Aviation	3,345	-12.04%	49,419	-7.52%	49,419	-7.52%
Military	462	-10.64%	7,204	17.41%	7,204	17.41%
TOTAL AIRCRAFT OPERATIONS	26,357	2.52%	320,137	2.66%	320,137	2.66%

**SALT LAKE CITY INTERNATIONAL AIRPORT
PASSENGER TRAFFIC REPORT
TWELVE MONTHS ENDED DECEMBER 2016**

	DECEMBER 2015	DECEMBER 2016	% CHANGE	YTD 2015	YTD 2016	% CHANGE	12 MO ROLLING Ending 12/2016	% CHANGE
ENPLANED PASSENGERS								
AIR CANADA	-	707	100.00%	-	13,053	100.00%	13,053	100.00%
ALASKA	18,502	24,006	29.75%	269,769	282,972	4.89%	282,972	4.89%
Horizon Air / Alaska	5,421	3,693	-31.88%	52,430	58,834	12.21%	58,834	12.21%
Skywest / Alaska	6,880	5,280	-23.26%	92,676	80,880	-12.73%	80,880	-12.73%
AMERICAN	25,478	46,192	81.30%	326,711	597,656	82.93%	597,656	82.93%
American Eagle/Republic	-	-	0.00%	44,202	6,876	-84.44%	6,876	-84.44%
Compass	3,366	4,106	21.98%	3,410	61,975	1717.45%	61,975	1717.45%
Envoy Air	1,371	2,544	85.56%	3,541	23,790	571.84%	23,790	571.84%
American/Mesa Air	77	-	-100.00%	929	2,893	211.41%	2,893	211.41%
SkyWest (American)	1,857	3,725	100.59%	61,973	49,316	-20.42%	49,316	-20.42%
DELTA	418,984	462,820	10.46%	5,415,552	5,801,458	7.13%	5,801,458	7.13%
SkyWest (Delta Connection)	186,952	185,180	-0.95%	2,174,316	2,180,100	0.27%	2,180,100	0.27%
Compass (Delta Connection)	10,494	4,261	-59.40%	183,072	121,117	-33.84%	121,117	-33.84%
FRONTIER	14,830	19,380	30.68%	195,508	231,416	18.37%	231,416	18.37%
JETBLUE	17,212	21,901	27.24%	211,319	257,022	21.63%	257,022	21.63%
KLM ROYAL DUTCH AIRLINES	-	-	0.00%	-	13,431	100.00%	13,431	100.00%
SOUTHWEST	93,594	93,679	0.09%	1,181,674	1,227,360	3.87%	1,227,360	3.87%
UNITED	20,319	27,578	35.73%	195,021	232,883	19.41%	232,883	19.41%
Express Jet	-	-	0.00%	2,601	446	-82.85%	446	-82.85%
Mesa Airlines (United Express)	152	963	533.55%	6,238	3,335	-46.54%	3,335	-46.54%
Republic Airways (United)	513	2,331	354.39%	21,283	15,239	-28.40%	15,239	-28.40%
Shuttle America (United Express)	749	-	-100.00%	15,590	9,671	-37.97%	9,671	-37.97%
SkyWest (United Express)	23,255	19,660	-15.46%	290,133	301,531	3.93%	301,531	3.93%
Trans States	-	436	100.00%	-	3,912	100.00%	3,912	100.00%
US AIRWAYS	23,305	-	-100.00%	298,392	-	-100.00%	-	-100.00%
SkyWest (US Airways Express)	-	-	0.00%	15,854	-	-100.00%	-	-100.00%
Charters	407	1,229	201.97%	5,132	6,420	25.10%	6,420	25.10%
TOTAL ENPLANED PASSENGERS	873,718	929,671	6.40%	11,067,326	11,583,586	4.66%	11,583,586	4.66%
DEPLANED PASSENGERS								
AeroMexico	-	-	0.00%	-	5	100.00%	5	100.00%
AIR CANADA	-	999	100.00%	-	14,040	100.00%	14,040	100.00%
ALASKA AIR	19,337	23,885	23.52%	262,043	274,739	4.85%	274,739	4.85%
Horizon Air / Alaska	5,476	3,776	-31.04%	51,699	56,987	10.23%	56,987	10.23%
Skywest / Alaska	7,116	5,511	-22.55%	93,914	82,223	-12.45%	82,223	-12.45%
AMERICAN	28,714	49,522	72.47%	334,000	596,716	78.66%	596,716	78.66%
American Eagle/Republic	-	-	0.00%	44,183	6,982	-84.20%	6,982	-84.20%
Compass	3,199	3,968	24.04%	3,327	56,648	1602.68%	56,648	1602.68%
Envoy Air (American)	1,766	3,002	69.99%	3,877	22,702	485.56%	22,702	485.56%
American/Mesa Air	79	-	-100.00%	950	3,210	237.89%	3,210	237.89%
SkyWest (American)	1,832	3,721	103.11%	60,987	48,247	-20.89%	48,247	-20.89%
DELTA	431,619	478,896	10.95%	5,428,513	5,807,212	6.98%	5,807,212	6.98%
SkyWest (Delta Connection)	190,813	186,652	-2.18%	2,178,153	2,183,650	0.25%	2,183,650	0.25%
Compass (Delta Connection)	10,894	4,296	-60.57%	180,790	119,306	-34.01%	119,306	-34.01%
FRONTIER	15,485	20,325	31.26%	201,719	232,013	15.02%	232,013	15.02%
JETBLUE	18,122	23,181	27.92%	213,528	257,814	20.74%	257,814	20.74%
KLM ROYAL DUTCH AIRLINES	-	-	0.00%	-	15,864	100.00%	15,864	100.00%
SOUTHWEST	96,907	97,813	0.93%	1,181,088	1,228,156	3.99%	1,228,156	3.99%
UNITED	22,135	27,429	23.92%	191,846	227,379	18.52%	227,379	18.52%
Express Jet	-	-	0.00%	2,725	452	-83.41%	452	-83.41%
Mesa Airlines / United Express	170	1,051	518.24%	6,936	3,437	-50.45%	3,437	-50.45%
Republic Airways (United)	732	2,843	288.39%	24,043	16,562	-31.12%	16,562	-31.12%
Shuttle America (United Express)	855	-	-100.00%	15,366	9,833	-36.01%	9,833	-36.01%
SkyWest (United Express)	20,997	20,260	-3.51%	280,988	297,510	5.88%	297,510	5.88%
Trans States	-	426	100.00%	-	3,855	100.00%	3,855	100.00%
US AIRWAYS	24,001	-	-100.00%	291,291	-	-100.00%	-	-100.00%
SkyWest (US Airways Express)	-	-	0.00%	15,263	-	-100.00%	-	-100.00%
Charters	289	1,325	358.48%	6,471	8,317	28.53%	8,317	28.53%
TOTAL DEPLANED PASSENGERS	900,538	958,881	6.48%	11,073,700	11,573,859	4.52%	11,573,859	4.52%
TOTAL PASSENGERS*	1,774,256	1,888,552	6.44%	22,141,026	23,157,445	4.59%	23,157,445	4.59%
INTERNATIONAL - ENPLANED								
AIR CANADA	0	707	100.00%	0	13,053	100.00%	13,053	100.00%
DELTA	14,149	24,165	70.79%	192,296	261,697	36.09%	261,697	36.09%
SkyWest (Delta Connection)	5,705	5,872	2.93%	54,980	76,380	38.92%	76,380	38.92%
Compass	60	0	-100.00%	27,050	11,132	-58.85%	11,132	-58.85%
FRONTIER	0	0	0.00%	1,231	0	-100.00%	0	-100.00%
KLM ROYAL DUTCH AIRLINES	0	0	0.00%	0	13,431	100.00%	13,431	100.00%
Charters	168	0	-100.00%	168	0	-100.00%	0	-100.00%
TOTAL ENPLANED INTERNATIONAL	20,082	30,744	53.09%	275,725	375,693	36.26%	375,693	36.26%
INTERNATIONAL - DEPLANED								
AeroMexico	0	0	0.00%	0	5	100.00%	5	100.00%
AIR CANADA	0	999	100.00%	0	14,040	100.00%	14,040	100.00%
DELTA	13,567	23,157	70.69%	200,154	263,105	31.45%	263,105	31.45%
SkyWest (Delta Connection)	5,374	5,769	7.35%	55,831	80,952	44.99%	80,952	44.99%
Compass	65	0	-100.00%	24,510	10,148	-58.60%	10,148	-58.60%
FRONTIER	0	0	0.00%	1,255	0	-100.00%	0	-100.00%
KLM ROYAL DUTCH AIRLINES	0	0	0.00%	0	15,864	100.00%	15,864	100.00%
Charters	168	0	-100.00%	169	0	-100.00%	0	-100.00%
TOTAL DEPLANED INTERNATIONAL	19,174	29,925	56.07%	281,919	384,114	36.25%	384,114	36.25%
TOTAL INTERNATIONAL PASSENGERS	39,256	60,669	54.55%	557,644	759,807	36.25%	759,807	36.25%

*Includes International

**SALT LAKE CITY INTERNATIONAL AIRPORT
TWELVE MONTHS ENDED DECEMBER 2016
Based on Total Enplanements**

MARKET SHARE

	DECEMBER 2015	MARKET SHARE	DECEMBER 2016	MARKET SHARE	YTD 2015	MARKET SHARE	YTD 2016	MARKET SHARE	12 MO ROLLING Ending 12/2015	12 MO ROLLING Ending 12/2016	MARKET SHARE
AIR CANADA	-	0.00%	707	0.08%	-	0.00%	13,053	0.11%	-	13,053	0.11%
ALASKA	30,803	3.53%	32,979	3.55%	414,875	3.75%	422,686	3.65%	414,875	422,686	3.65%
AMERICAN	32,149	3.68%	56,567	6.08%	440,766	3.98%	742,506	6.41%	440,766	742,506	6.41%
DELTA	616,430	70.55%	652,261	70.16%	7,772,940	70.23%	8,102,675	69.95%	7,772,940	8,102,675	69.95%
FRONTIER	14,830	1.70%	19,380	2.08%	195,508	1.77%	231,416	2.00%	195,508	231,416	2.00%
JETBLUE	17,212	1.97%	21,901	2.36%	211,319	1.91%	257,022	2.22%	211,319	257,022	2.22%
KLM ROYAL DUTCH	-	0.00%	-	0.00%	-	0.00%	13,431	0.12%	-	13,431	0.12%
SOUTHWEST	93,594	10.71%	93,679	10.08%	1,181,674	10.68%	1,227,360	10.60%	1,181,674	1,227,360	10.60%
UNITED	44,988	5.15%	50,968	5.48%	530,866	4.80%	567,017	4.90%	530,866	567,017	4.90%
US AIRWAYS	23,305	2.67%	-	0.00%	314,246	2.84%	-	0.00%	314,246	-	0.00%
Charters	407	0.05%	1,229	0.13%	5,132	0.05%	6,420	0.06%	5,132	6,420	0.06%
TOTAL ENPLANEMENTS	873,718	100%	929,671	100%	11,067,326	100%	11,583,586	100%	11,067,326	11,583,586	100%

PERCENT CHANGE YOY

	DECEMBER 2015	DECEMBER 2016	PERCENT CHANGE	YTD 2015	YTD 2016	PERCENT CHANGE	12 MO ROLLING Ending 12/2015	12 MO ROLLING Ending 12/2016	PERCENT CHANGE
AIR CANADA	-	707	100.00%	-	13,053	100.00%	-	13,053	100.00%
ALASKA	30,803	32,979	7.06%	414,875	422,686	1.88%	414,875	422,686	1.88%
AMERICAN	32,149	56,567	75.95%	440,766	742,506	68.46%	440,766	742,506	68.46%
DELTA	616,430	652,261	5.81%	7,772,940	8,102,675	4.24%	7,772,940	8,102,675	4.24%
FRONTIER	14,830	19,380	30.68%	195,508	231,416	18.37%	195,508	231,416	18.37%
JETBLUE	17,212	21,901	27.24%	211,319	257,022	21.63%	211,319	257,022	21.63%
KLM ROYAL DUTCH	-	-	100.00%	-	13,431	100.00%	-	13,431	100.00%
SOUTHWEST	93,594	93,679	0.09%	1,181,674	1,227,360	3.87%	1,181,674	1,227,360	3.87%
UNITED	44,988	50,968	13.29%	530,866	567,017	6.81%	530,866	567,017	6.81%
US AIRWAYS	23,305	-	-100.00%	314,246	-	-100.00%	314,246	-	-100.00%
Charters	407	1,229	201.97%	5,132	6,420	25.10%	5,132	6,420	25.10%
TOTAL ENPLANEMENTS	873,718	929,671	6.40%	11,067,326	11,583,586	4.66%	11,067,326	11,583,586	4.66%

**SALT LAKE CITY INTERNATIONAL AIRPORT
LANDING ACTIVITY
TWELVE MONTHS ENDED DECEMBER 2016**

	DECEMBER 2015	DECEMBER 2016	CHANGE	YTD 2015	YTD 2016	CHANGE	12 MO ROLLING Ending 12/2016	% CHANGE
TOTAL NUMBER OF LANDINGS								
SCHEDULED CARRIERS								
AEROMEXICO	-	-	0.00%	-	1	100.00%	1	100.00%
AIR CANADA	-	16	100.00%	-	191	100.00%	191	100.00%
ALASKA	183	210	14.75%	2,280	2,398	5.18%	2,398	5.18%
Horizon Air / Alaska	92	62	-32.61%	1,007	979	-2.78%	979	-2.78%
Skywest / Alaska	123	89	-27.64%	1,546	1,386	-10.35%	1,386	-10.35%
AMERICAN	211	363	72.04%	2,406	4,427	84.00%	4,427	84.00%
Compass	45	60	33.33%	47	844	1695.74%	844	1695.74%
American Eagle/Republic	-	-	0.00%	630	99	-84.29%	99	-84.29%
American/Mesa Air	1	1	0.00%	14	54	285.71%	54	285.71%
Envoy Air (American)	26	45	73.08%	67	409	510.45%	409	510.45%
SkyWest (American)	41	61	48.78%	1,349	942	-30.17%	942	-30.17%
DELTA	3,045	3,445	13.14%	37,925	41,710	9.98%	41,710	9.98%
SkyWest (Delta Connection)	3,618	3,571	-1.30%	41,539	41,696	0.38%	41,696	0.38%
Compass (Delta Connection)	156	66	-57.69%	2,616	1,864	-28.75%	1,864	-28.75%
FRONTIER	114	120	5.26%	1,409	1,609	14.19%	1,609	14.19%
JETBLUE	133	184	38.35%	1,590	1,849	16.29%	1,849	16.29%
KLM ROYAL DUTCH AIRLINES	-	-	0.00%	-	69	100.00%	69	100.00%
SOUTHWEST	796	816	2.51%	9,704	9,759	0.57%	9,759	0.57%
UNITED	174	226	29.89%	1,559	1,801	15.52%	1,801	15.52%
Express Jet	-	-	0.00%	57	15	-73.68%	15	-73.68%
Mesa / United Express	2	14	600.00%	96	47	-51.04%	47	-51.04%
Republic Airways Holdings	11	31	181.82%	358	241	-32.68%	241	-32.68%
SkyWest (United Express)	399	332	-16.79%	4,870	4,790	-1.64%	4,790	-1.64%
Shuttle America (United Express)	12	-	-100.00%	235	147	-37.45%	147	-37.45%
Trans States	-	9	100.00%	-	84	100.00%	84	100.00%
US AIRWAYS	176	-	-100.00%	2,160	-	-100.00%	-	-100.00%
SkyWest (US Airways)	-	-	0.00%	349	-	-100.00%	-	-100.00%
SUBTOTAL SCHEDULED CARRIERS:	9,358	9,721	3.88%	113,813	117,411	3.16%	117,411	3.16%
CHARTER CARRIERS								
ALLEGiant AIR	1	1	0.00%	10	13	30.00%	13	30.00%
BIGHORN AIRWAYS	-	-	0.00%	6	3	-50.00%	3	-50.00%
BOMBARDIER BUSINESS JETS	33	38	15.15%	147	234	59.18%	234	59.18%
BOUtiQUE AIR	-	105	100.00%	-	1,123	100.00%	1,123	100.00%
D&D AVIATION	7	-	-100.00%	52	56	7.69%	56	7.69%
DELTA PRIVATE JETS	16	21	31.25%	144	176	22.22%	176	22.22%
EXECUTIVE JET MANAGEMENT	12	19	58.33%	116	109	-6.03%	109	-6.03%
FLIGHT OPTIONS	14	12	-14.29%	217	133	-38.71%	133	-38.71%
KEYLIME AIR	2	1	-50.00%	16	24	-85.09%	24	-85.09%
NETJETS	127	144	13.39%	1,081	1,234	14.15%	1,234	14.15%
SIERRA PACIFIC	-	-	0.00%	3	7	133.33%	7	133.33%
SUNSET AVIATION	2	2	0.00%	29	26	-10.34%	26	-10.34%
SWIFT AIR	2	6	200.00%	18	27	50.00%	27	50.00%
XOJET	15	29	93.33%	155	192	23.87%	192	23.87%
OTHER CHARTER	90	125	38.89%	823	967	17.50%	967	17.50%
SUBTOTAL CHARTER CARRIERS:	321	503	56.70%	2,962	4,324	45.98%	4,324	45.98%
CARGO CARRIERS								
ABX AIR (DHL)	-	-	0.00%	2	1	-50.00%	1	-50.00%
AERO CHARTER & TRANSPORT	22	22	0.00%	254	252	-0.79%	252	-0.79%
AIR TRANSPORT INTERNATIONAL	-	2	100.00%	221	6	-97.29%	6	-97.29%
AMERIFLIGHT	368	319	-13.32%	3,600	3,678	2.17%	3,678	2.17%
CORPORATE AIR (BILLINGS)	121	135	11.57%	1,259	1,297	3.02%	1,297	3.02%
EMPIRE	18	17	-5.56%	208	205	-1.44%	205	-1.44%
FEDEX EXPRESS	220	171	-22.27%	1,586	1,716	8.20%	1,716	8.20%
SOUTHERN AIR	49	49	0.00%	95	558	487.37%	558	487.37%
UPS	160	156	-2.50%	1,198	1,175	-1.92%	1,175	-1.92%
WESTERN AIR EXPRESS	32	35	9.38%	369	423	14.63%	423	14.63%
OTHER CARGO	25	145	480.00%	575	708	23.13%	708	23.13%
SUBTOTAL CARGO CARRIERS:	1,015	1,051	3.55%	9,367	10,019	6.96%	10,019	6.96%
TOTAL LANDINGS	10,694	11,275	5.43%	126,142	131,754	4.45%	131,754	4.45%
TOTAL LANDING WEIGHT								
SCHEDULED CARRIERS								
AEROMEXICO	-	-	0.00%	-	94,798	100.00%	94,798	100.00%
AIR CANADA	-	1,552,000	100.00%	-	18,527,000	100.00%	18,527,000	100.00%
ALASKA	24,458,900	30,919,100	26.41%	306,726,700	340,030,500	10.86%	340,030,500	10.86%
Horizon Air / Alaska	5,681,000	3,828,500	-32.61%	62,182,250	60,453,250	-2.78%	60,453,250	-2.78%
Skywest / Alaska	8,495,624	6,655,259	-21.66%	104,697,702	98,247,599	-6.16%	98,247,599	-6.16%
AMERICAN	28,372,000	52,305,700	84.36%	328,412,900	641,076,734	95.20%	641,076,734	95.20%
Compass	3,372,750	4,497,000	33.33%	3,522,650	63,257,800	1695.74%	63,257,800	1695.74%
American Eagle/Republic	-	-	0.00%	47,222,112	7,420,050	-84.29%	7,420,050	-84.29%
Envoy Air (American)	1,742,000	3,259,900	87.14%	4,489,000	27,604,240	514.93%	27,604,240	514.93%
American/Mesa Air	73,500	73,500	0.00%	1,029,000	3,969,000	285.71%	3,969,000	285.71%

**SALT LAKE CITY INTERNATIONAL AIRPORT
LANDING ACTIVITY
TWELVE MONTHS ENDED DECEMBER 2016**

	DECEMBER 2015	DECEMBER 2016	CHANGE	YTD 2015	YTD 2016	CHANGE	12 MO ROLLING Ending 12/2016	% CHANGE
SkyWest (American)	1,927,000	4,087,000	112.09%	63,403,000	54,474,000	-14.08%	54,474,000	-14.08%
DELTA	476,135,460	534,575,024	12.27%	6,019,648,905	6,486,639,844	7.76%	6,486,639,844	7.76%
SkyWest (Delta Connection)	217,547,800	213,640,541	-1.80%	2,448,608,600	2,486,101,572	1.53%	2,486,101,572	1.53%
Compass (Delta Connection)	11,679,028	4,950,218	-57.61%	196,411,035	139,550,996	-28.95%	139,550,996	-28.95%
FRONTIER	15,461,926	18,491,238	19.59%	194,434,360	224,517,006	15.47%	224,517,006	15.47%
JETBLUE	18,912,600	26,164,800	38.35%	226,127,318	262,926,656	16.27%	262,926,656	16.27%
KLM ROYAL DUTCH AIRLINES	-	-	0.00%	-	27,669,000	100.00%	27,669,000	100.00%
SOUTHWEST	100,042,000	104,918,000	4.87%	1,232,164,000	1,266,748,000	2.81%	1,266,748,000	2.81%
UNITED	24,460,400	31,643,900	29.37%	219,751,018	258,942,520	17.83%	258,942,520	17.83%
Express Jet	-	-	0.00%	2,513,244	692,288	-72.45%	692,288	-72.45%
Mesa / United Express	150,000	1,050,000	600.00%	7,197,463	3,525,000	-51.02%	3,525,000	-51.02%
Republic Airways Holdings	692,312	2,244,317	224.18%	22,206,312	17,287,892	-22.15%	17,287,892	-22.15%
SkyWest (United Express)	25,003,109	22,600,561	-9.61%	301,336,182	320,434,108	6.34%	320,434,108	6.34%
Shuttle America (United Express)	867,744	-	-100.00%	16,993,320	10,629,864	-37.45%	10,629,864	-37.45%
Trans States	-	396,900	100.00%	-	3,606,687	100.00%	3,606,687	100.00%
US AIRWAYS	26,819,500	-	-100.00%	342,852,064	-	-100.00%	-	-100.00%
Mesa (US Airways Express)	-	-	0.00%	-	-	0.00%	-	0.00%
SkyWest (US Airways)	-	-	0.00%	16,429,500	-	-100.00%	-	-100.00%
SUBTOTAL SCHEDULED CARRIERS:	991,894,653	1,067,853,458	7.66%	12,168,358,635	12,824,426,404	5.39%	12,824,426,404	5.39%
CHARTER CARRIERS								
ALLEGiant AIR	198,500	198,000	-0.25%	1,513,000	2,340,000	54.66%	2,340,000	54.66%
BIGHORN AIRWAYS	-	-	0.00%	53,120	27,320	-48.57%	27,320	-48.57%
BOUTIQUE AIR	-	1,157,980	100.00%	-	12,088,560	100.00%	12,088,560	100.00%
BUSINESS JET SOLUTIONS	-	-	0.00%	935,550	-	-100.00%	-	-100.00%
D&D AVIATION	107,900	-	-100.00%	785,140	840,650	7.07%	840,650	7.07%
DELTA PRIVATE JETS	339,785	646,050	90.13%	3,664,635	4,618,865	26.04%	4,618,865	26.04%
EXECUTIVE JET MANAGEMENT	428,215	771,600	80.19%	5,090,780	4,909,485	-3.56%	4,909,485	-3.56%
FLIGHT OPTIONS	378,345	232,250	-38.61%	5,101,675	2,810,540	-44.91%	2,810,540	-44.91%
KEYLIME AIR	63,448	31,724	-50.00%	4,611,066	761,379	-83.49%	761,379	-83.49%
NETJETS	3,542,540	4,448,624	25.58%	28,562,175	35,768,461	25.23%	35,768,461	25.23%
SIERRA PACIFIC	-	-	0.00%	311,000	743,000	138.91%	743,000	138.91%
SUN COUNTRY	-	146,300	100.00%	146,300	1,609,000	999.79%	1,609,000	999.79%
SWIFT AIR	242,000	726,000	200.00%	1,776,925	3,267,000	83.86%	3,267,000	83.86%
XOJET	486,750	941,700	93.47%	5,032,350	6,216,150	23.52%	6,216,150	23.52%
OTHER CHARTER	3,634,646	9,931,909	173.26%	26,587,802	37,834,391	42.30%	37,834,391	42.30%
SUBTOTAL CHARTER CARRIERS:	9,422,129	19,232,137	104.12%	84,171,518	113,834,801	35.24%	113,834,801	35.24%
CARGO CARRIERS								
ABX AIR (DHL)	-	-	0.00%	544,000	320,000	-41.18%	320,000	-41.18%
AERO CHARTER & TRANSPORT	150,700	150,700	0.00%	1,739,900	1,726,200	-0.79%	1,726,200	-0.79%
AIR TRANSPORT INTERNATIONAL	-	37,500	100.00%	47,507,000	111,000	-99.77%	111,000	-99.77%
ALPINE AVIATION	-	660,100	100.00%	-	1,996,400	100.00%	1,996,400	100.00%
AMERIFLIGHT	4,887,700	4,516,950	-7.59%	46,520,800	48,534,424	4.33%	48,534,424	4.33%
CORPORATE AIR (BILLINGS)	1,028,500	1,147,500	11.57%	10,701,500	11,024,500	3.02%	11,024,500	3.02%
EMPIRE	650,790	734,678	12.89%	7,520,240	7,468,083	-0.69%	7,468,083	-0.69%
FEDEX EXPRESS	73,824,500	58,791,600	-20.36%	525,193,400	566,610,700	7.89%	566,610,700	7.89%
SOUTHERN AIR INC	6,059,455	5,931,899	-2.11%	11,637,051	68,237,154	486.38%	68,237,154	486.38%
UPS	52,628,220	51,295,060	-2.53%	369,306,620	365,566,240	-1.01%	365,566,240	-1.01%
WESTERN AIR EXPRESS	416,000	455,000	9.38%	3,619,500	5,449,600	50.56%	5,449,600	50.56%
OTHER CARGO	395,820	1,118,165	182.49%	10,484,154	7,498,207	-28.48%	7,498,207	-28.48%
SUBTOTAL CARGO CARRIERS:	140,041,685	124,839,152	-10.86%	1,034,774,165	1,084,542,508	4.81%	1,084,542,508	4.81%
TOTAL LANDINGS	1,141,358,467	1,211,924,747	6.18%	13,287,304,318	14,022,803,713	5.54%	14,022,803,713	5.54%

**SALT LAKE CITY INTERNATIONAL AIRPORT
CARGO ACTIVITY REPORT
TWELVE MONTHS ENDED DECEMBER 2016**

	DECEMBER 2015	DECEMBER 2016	CHANGE	YTD 2015	YTD 2016	CHANGE	12 MO ROLLING Ending 12/2016	% CHANGE
ENPLANED CARGO								
PASSENGER CARRIERS								
ALASKA	8,048	1,695	-78.94%	162,441	136,626	-15.89%	136,626	-15.89%
Horizon Air / Alaska	146	-	-100.00%	2,671	1,418	-46.91%	1,418	-46.91%
Skywest / Alaska	1,259	30	-97.62%	8,018	12,819	59.88%	12,819	59.88%
AMERICAN	70,282	9,991	-85.78%	264,817	427,337	61.37%	427,337	61.37%
American Eagle/Republic	-	-	0.00%	14,550	273	-98.12%	273	-98.12%
Compass	1,830	-	-100.00%	1,830	2	-99.89%	2	-99.89%
Envoy Air (American)	113	280	147.79%	704	884	25.57%	884	25.57%
Mesa	-	-	0.00%	-	8	100.00%	8	100.00%
SkyWest (American)	-	-	0.00%	7,065	2,442	-65.44%	2,442	-65.44%
DELTA	833,862	1,098,105	31.69%	10,616,494	9,244,018	-12.93%	9,244,018	-12.93%
SkyWest (Delta Connection)	-	-	0.00%	-	-	0.00%	-	0.00%
Compass (Delta Connection)	-	-	0.00%	-	-	0.00%	-	0.00%
FRONTIER	-	-	0.00%	-	-	0.00%	-	0.00%
KLM ROYAL DUTCH	-	-	0.00%	-	346,267	100.00%	346,267	100.00%
SOUTHWEST	358,863	262,179	-26.94%	4,219,290	4,204,922	-0.34%	4,204,922	-0.34%
UNITED	6,370	5,104	-19.87%	73,895	109,539	48.24%	109,539	48.24%
Express Jet	-	-	0.00%	-	-	0.00%	-	0.00%
SkyWest (Continental Express)	-	-	0.00%	-	-	0.00%	-	0.00%
US AIRWAYS	16,590	-	-100.00%	180,926	-	-100.00%	-	-100.00%
Mesa (US Airways Express)	-	-	0.00%	-	-	0.00%	-	0.00%
SkyWest (US Airways)	-	-	0.00%	271	-	-100.00%	-	-100.00%
Others	-	-	0.00%	50	20,200	40300.00%	20,200	40300.00%
CARGO CARRIERS								
ABX AIR (DHL)	-	-	0.00%	20,655	16,001	-22.53%	16,001	-22.53%
ASTAR (DHL)	-	-	0.00%	-	-	0.00%	-	0.00%
CAPITOL CARGO INT'L (DHL)	-	-	0.00%	-	-	0.00%	-	0.00%
FEDEX EXPRESS*	9,698,089	8,573,165	-11.60%	92,911,157	92,190,185	-0.78%	92,190,185	-0.78%
GEM AIR	-	64,135	100.00%	-	233,936	100.00%	233,936	100.00%
SOUTHERN AIR	357,104	348,122	-2.52%	652,054	4,334,094	564.68%	4,334,094	564.68%
UPS	5,305,363	5,434,597	2.44%	45,401,688	45,467,649	0.15%	45,467,649	0.15%
MISC CARGO	-	-	0.00%	-	-	0.00%	-	0.00%
TOTAL ENPLANED CARGO	17,603,278	16,748,597	-4.86%	168,653,005	165,813,786	-1.68%	165,813,786	-1.68%
DEPLANED CARGO								
PASSENGER CARRIERS								
ALASKA	15,163	22,918	51.14%	258,587	256,207	-0.92%	256,207	-0.92%
Horizon Air / Alaska	739	227	-69.28%	11,215	3,816	-65.97%	3,816	-65.97%
Skywest / Alaska	1,934	219	-88.68%	22,479	20,393	-9.28%	20,393	-9.28%
AMERICAN	29,148	30,099	3.26%	199,215	396,497	99.03%	396,497	99.03%
American Eagle/Republic	-	-	0.00%	3,852	1,570	-59.24%	1,570	-59.24%
Compass	-	-	0.00%	-	694	100.00%	694	100.00%
Envoy Air (American)	2	151	7450.00%	177	223	25.99%	223	25.99%
SkyWest (American)	-	-	0.00%	738	4,023	445.12%	4,023	445.12%
DELTA	1,200,562	1,619,188	34.87%	14,294,529	14,245,350	-0.34%	14,245,350	-0.34%
SkyWest (Delta Connection)	-	-	0.00%	-	-	0.00%	-	0.00%
Mesaba Airlines (Delta Connection)	-	-	0.00%	-	-	0.00%	-	0.00%
Compass (Delta Connection)	-	-	0.00%	-	-	0.00%	-	0.00%
FRONTIER	-	-	0.00%	-	-	0.00%	-	0.00%
KLM ROYAL DUTCH	-	-	0.00%	-	491,488	100.00%	491,488	100.00%
SOUTHWEST	413,957	332,499	-19.68%	5,342,074	4,764,935	-10.80%	4,764,935	-10.80%
UNITED	29,036	33,951	16.93%	238,715	318,758	33.53%	318,758	33.53%
Express Jet	-	-	0.00%	-	-	0.00%	-	0.00%
SkyWest	-	-	0.00%	-	-	0.00%	-	0.00%
US AIRWAYS	6,057	-	-100.00%	148,743	-	-100.00%	-	-100.00%
Mesa (US Airways Express)	-	-	0.00%	-	-	0.00%	-	0.00%
Skywest (US Airways)	-	-	0.00%	2,898	-	-100.00%	-	-100.00%
KITTY HAWK CHARTERS	-	-	0.00%	-	-	0.00%	-	0.00%
Others	-	11,611	100.00%	50	11,611	23122.00%	11,611	23122.00%
CARGO CARRIERS								
ABX AIR (DHL)	-	-	0.00%	46,096	1,069	-97.68%	1,069	-97.68%
FEDEX EXPRESS*	8,650,339	9,694,250	12.07%	78,826,244	94,636,543	20.06%	94,636,543	20.06%
GEM AIR	-	11,506	100.00%	-	161,238	100.00%	161,238	100.00%
SOUTHERN AIR	534,965	638,351	19.33%	1,069,930	5,725,379	435.12%	5,725,379	435.12%
UPS	6,943,586	6,881,566	-0.89%	60,247,163	62,281,881	3.38%	62,281,881	3.38%
MISC CARGO	-	-	0.00%	-	-	0.00%	-	0.00%
TOTAL DEPLANED CARGO	18,277,857	19,759,393	8.11%	170,854,722	187,944,096	10.00%	187,944,096	10.00%
TOTAL CARGO	35,881,135	36,507,990	1.75%	339,507,727	353,757,882	4.20%	353,757,882	4.20%

*FEDEX EXPRESS includes mail



Salt Lake City
Department of Airports

COMPARISON OF ON TIME OPERATIONS
November 2016

ARRIVALS

Airport	Flights	% On Time	Rank
SLC SALT LAKE CITY INTL	8,577	91.3	1
ATL HARTSFIELD-JACKSON ATLANTA INTL	30,954	91.1	2
TPA TAMPA INTL	5,509	91.1	3
CVG CINCINNATI NORTHERN INT. KY	1,126	90.3	4
CLT CHARLOTTE DOUGLAS	9,071	90.0	5
DEN DENVER INTL	17,608	89.4	6
MCO ORLANDO INTL	10,157	89.3	7
PDX PORTLAND INTL	4,791	89.2	8
FLL FT. LAUDERDALE	6,931	89.0	9
BWI BALTIMORE/WASHINGTON INTL	8,128	88.9	10
IAH HOUSTON GEORGE BUSH	10,879	88.6	11
LAS LAS VEGAS MCCARRAN INTL	12,118	88.4	12
DTW DETROIT METRO WAYNE CNTY	10,244	88.2	13
MIA MIAMI INTL	5,509	88.2	14
SEA SEATTLE-TACOMA INTL	10,168	88.1	15
MSP MINNEAPOLIS-ST. PAUL INTL	10,216	87.8	16
IAD WASHINGTON DULLES	2,905	87.6	17
STL ST. LOUIS LAMBERT INTL	4,660	87.4	18
SAN SAN DIEGO LINDBERGH FIELD	6,316	87.2	19
MDW CHICAGO MIDWAY	6,890	86.6	20
DFW DALLAS-FT. WORTH REGIONAL	15,213	85.4	21
PHL PHILADELPHIA INTL	5,975	85.4	22
DCA RONALD REAGAN NATIONAL	6,018	85.3	23
ORD CHICAGO O HARE	19,459	84.9	24
PHX PHOENIX SKY HARBOR INTL	12,750	83.9	25
JFK NEW YORK JFK INTL	7,578	83.0	26
BOS BOSTON LOGAN INTL	9,743	82.1	27
SFO SAN FRANCISCO INTL	13,873	81.5	28
LAX LOS ANGELES INTL	17,043	81.1	29
EWR NEWARK LIBERTY INTERNATIONAL	9,764	73.9	30
LGA NEW YORK LAGUARDIA	7,441	70.4	31
AVERAGES	9,923	86.28	

DEPARTURES

Airport	Flights	% On Time	Rank
CVG CINCINNATI NORTHERN INT. KY	1,125	91.7	1
SLC SALT LAKE CITY INTL	8,582	91.3	2
TPA TAMPA INTERNATIONAL	5,507	90.7	3
CLT CHARLOTTE DOUGLAS	9,068	90.3	4
PDX PORTLAND INTERNATIONAL	4,789	90.2	5
SEA SEATTLE-TACOMA INTL	10,171	89.3	6
ATL HARTSFIELD-JACKSON ATLANTA INTL	30,965	89.2	7
IAD WASHINGTON DULLES	2,909	88.8	8
MCO ORLANDO INTL	10,161	88.4	9
DCA RONALD REAGAN NATIONAL	6,019	88.0	10
MSP MINNEAPOLIS-ST. PAUL INTL	10,235	87.5	11
PHL PHILADELPHIA INTL	5,980	87.4	12
BWI BALTIMORE/WASHINGTON INTL	8,132	87.3	13
DEN DENVER INTERNATIONAL	17,589	87.2	14
FLL FT. LAUDERDALE	6,930	86.9	15
DTW DETROIT METRO WAYNE CNTY	10,196	86.5	16
IAH HOUSTON GEORGE BUSH	10,886	86.5	17
LAS LAS VEGAS MCCARRAN INTL	12,118	86.5	18
MIA MIAMI INTL	5,498	86.3	19
SAN SAN DIEGO LINDBERGH FIELD	6,313	86.3	20
PHX PHOENIX SKY HARBOR INTL	12,744	86.0	21
BOS BOSTON LOGAN INTERNATIONAL	9,748	85.4	22
DFW DALLAS-FT. WORTH REGIONAL	15,224	85.2	23
STL ST. LOUIS LAMBERT INTL	4,657	84.9	24
MDW CHICAGO MIDWAY	6,893	84.5	25
JFK NEW YORK JFK INTL	7,582	84.4	26
ORD CHICAGO O HARE	19,488	83.6	27
SFO SAN FRANCISCO INTL	13,874	82.8	28
LAX LOS ANGELES INTL	17,044	80.7	29
LGA NEW YORK LAGUARDIA	7,438	78.8	30
EWR NEWARK LIBERTY INTERNATIONAL	9,745	77.9	31
AVERAGES	9,923	86.47	

ON TIME ARRIVAL PERFORMANCE AT SLC

By Carrier

Air Carrier	Flights	% On Time
DL DELTA	3,298	94.4%
AS ALASKA	204	93.1%
OO SKYWEST	3,597	91.0%
UA UNITED	133	88.0%
WN SOUTHWEST	807	85.4%
AA AMERICAN	261	84.3%
F9 FRONTIER	127	84.3%
B6 JETBLUE	150	82.7%
AVERAGES	8,577	91.3%

Source: DOT Air Travel Consumer Report

DESIGN AND CONSTRUCTION REPORT

TABLE OF CONTENTS

- I. Area Map of Project Locations
- II. Project Schedule
- III. Construction Analysis
- IV. Design and Construction Report



Salt Lake City
International Airport

2016 - 2017 Project Legend

Airfield

1. Deicing Pad 34R
2. R/W 17-35 and T/W P & R
Pavement Rehabilitation
3. Car Wash Rebuild

Terminal

4. Restroom Renovation C133 & C134

Landside

5. Airport Operations Center



SALT LAKE CITY INTERNATIONAL AIRPORT
CONSTRUCTION PROGRAM
2016/2017 Construction Schedule

ID	Task Name	Start	Finish	2016											
				Oct '16	Nov '16	Dec '16	Jan '17	Feb '17	Mar '17	Apr '17	May '17	Jun '17	Jul '17	Aug '17	
1	Airfield	Thu 10/18/12	Mon 4/3/17	[Gantt bar from Oct '16 to Apr '17]											
2	(1) Deicing Pad 34R	Thu 10/18/12	Mon 8/29/16	[Gantt bar from Oct '16 to Nov '16]											
3	(2) R/W 17-35 & T/W's P & R Pavement Rehabilitation	Mon 8/1/16	Mon 2/27/17	[Gantt bar from Oct '16 to Feb '17]											
4	(3) Car Wash Rebuild	Tue 10/4/16	Mon 4/3/17	[Gantt bar from Oct '16 to Mar '17]											
5	Terminal	Wed 10/19/16	Tue 1/31/17	[Gantt bar from Oct '16 to Feb '17]											
6	(4) Restroom Renovation C133 & C134	Wed 10/19/16	Tue 1/31/17	[Gantt bar from Oct '16 to Feb '17]											
7	Landside	Wed 6/1/16	Tue 8/1/17	[Gantt bar from Oct '16 to Aug '17]											
8	(5) Airport Operations Center	Wed 6/1/16	Tue 8/1/17	[Gantt bar from Oct '16 to Aug '17]											
9	South Valley Regional Airport	Mon 3/20/17	Fri 6/9/17	[Gantt bar from Mar '17 to Jun '17]											
10	(6) SVRA R/W 16-34 & T/W A Pavement Rehabilitation	Mon 3/20/17	Fri 6/9/17	[Gantt bar from Mar '17 to Jun '17]											

Date: Tue 2/7/17

<p>Design Construction</p>	<p>DESIGN Inactive Milestone </p> <p>CONSTRUCTION Inactive Summary </p> <p>SCOPING Manual Task </p> <p>SUMMARY Duration-only </p> <p>Inactive Task Manual Summary Rollup </p>	<p>Manual Summary </p> <p>Start-only </p> <p>Finish-only </p> <p>Deadline </p>
----------------------------	--	--

**SALT LAKE CITY DEPARTMENT OF AIRPORTS
CONSTRUCTION PROJECT STATUS 2016 - 2017**

#	PROJECT NAME	ENGINEER'S ESTIMATE	BID AMOUNT	APPROVED CHANGE ORDERS TO DATE	% OF COST INCREASE TO DATE	STATUS	CONTRACTOR
CONSTRUCTION							
1	Deicing Pad 34R	\$ 32,636,278	\$ 30,713,449	\$ 1,839,542	5.99%	complete	Wadsworth Brothers Const.
2	R/W 17-35 & T/W's P & R Pavement Rehabilitation	\$ 11,525,000	\$ 9,871,843	\$ 16,872	0.17%	on schedule	Staker Parsons Company
3	Car Wash Rebuild	\$ 357,000	\$ 486,588	\$ 6,058	1.25%	on schedule	Paulsen Construction
4	Restroom Renovations C133 & C134	\$ 276,829	\$ 268,800	\$ 1,328	0.49%	complete	AIS Commercial, Inc.
5	Airport Operations Center	\$ 15,000,000	\$ 16,515,000	\$ 324,540	1.97%	on schedule	Big D Construciton
	Sub Total	\$ 59,795,107	\$ 57,855,680	\$ 2,188,340	3.78%		
DESIGN/BID/AWARD							
6	SVRA R/W 16-34 & T/W A Pavement Rehabilitation	\$ 3,381,136	\$ 2,946,149			awarded	Geneva Rock Products
	Sub Total	\$ 3,381,136	\$ 2,946,149				
	Total	\$ 63,176,243	\$ 60,801,829				
Budget amount, Engineer's estimate, and Bid amount is based on construction cost only.							



Salt Lake City
Department of Airports

**February 2017
Media Clippings**

Advisory Board Meeting

<https://www.slairport.com/assets/pdfDocuments/MediaPacketFeb2017.pdf>