

DEPARTMENT OF AIRPORTS  
BOARD MEETING

13 December 2017

AGENDA



Salt Lake City  
Department of Airports

**SALT LAKE CITY DEPARTMENT OF AIRPORTS  
BOARD MEETING AGENDA**

13 December 2017  
8:00 A.M.

CONSENT AGENDA

- A. Minutes of the 18 October 2017 Meeting

DISCUSSION ITEMS

- B. Director's Report – Bill Wyatt, Executive Director, SLCDCA
- C. Terminal Redevelopment Program (TRP) Update – Mike Williams, ARP Director, SLCDCA
- D. Public Meetings Training - Marco Kunz, Senior City Attorney
- E. Nominations for Board Chair and Vice-Chair

INFORMATION ITEMS

- A. Financial Report – October 2017
- B. Air Traffic Statistics – October 2017
- C. Comparison of On-Time Operations – September 2017
- D. Construction Report – December 2017
- E. Media Clippings – December 2017

The next meeting will be held on **Wednesday, January 17, 2018**, at 8:00 a.m. Meetings are held in the Board Room located on the third level of the short-term parking garage. People with disabilities may make requests for reasonable accommodations no later than 48 hours in advance in order to attend this Airport Board Meeting. Accommodations may include alternate formats, interpreters, and other auxiliary aids. This is an accessible facility. For questions or additional information, please contact LuJean Christensen at 801-575-2096.

DEPARTMENT OF AIRPORTS  
BOARD MEETING

13 December 2017

MINUTES

# SALT LAKE CITY DEPARTMENT OF AIRPORTS MINUTES OF ADVISORY BOARD MEETING

18 October 2017

Members Present: Larry Pinnock, Vice-Chair  
Igor Best-Devereux  
Wade Bitner  
Mickey Gallivan  
Sam Granato  
Senator Karen Mayne  
Cyndy Miller  
Kim Rolfe

Excused: J.T. Martin, Chair  
Natalie Gochnour  
Steven Price

Mayor's Office: Patrick Leary

Department of Airports: Russ Pack, Executive Director  
Gary Bilbrey, Operations Manager/Terminals & Landside  
John Buckner, Director of Administration & Commercial Services  
Ed Cherry, Chief Information Officer  
Eddie Clayson, Director of Maintenance  
Kristen Elder, Management Analyst  
Lori Hintze, Terminal Operations Specialist  
Nelson Jimenez, Landside Operations Specialist  
Marco Kunz, Attorney  
Allen McCandless, Director of Planning  
Kevin Robins, Director of Engineering  
Craig Vargo, Police Chief  
Nancy Volmer, Director of Public Relations & Marketing  
Mike Williams, TRP Program Director

Larry Pinnock called the meeting to order at 8:00 am. Pinnock acknowledged Federal Security Director Mark Lewis, incoming SLCDA Executive Director Bill Wyatt, Thom Lang of Delta Air Lines, and Lee Davidson of the Salt Lake Tribune, who were in attendance.

## AGENDA

### A. Minutes

The motion was made by Mickey Gallivan and seconded by Wade Bitner to approve the minutes of September 20, 2017 as presented. All votes were affirmative; motion passed.

## **B. Director's Report**

Russ Pack, Executive Director, updated the Airport Advisory Board regarding current events.

- Pack introduced and recognized employees Lori Hintze, Terminal Operations Specialist, Nelson Jimenez, Landside Operations Specialist, and Gary Bilbrey, Operations Manager, Terminals/Landside. Pinnock asked Hintze and Jimenez about the biggest challenges they face as we near capacity in our current facilities. Nelson answered managing traffic as we incorporate new construction with existing facilities. Hintze explained that she enjoys working with departing passengers as they navigate the check-in and security screening procedures. Both individuals reported no major impacts to operations and that passengers enjoy seeing the construction progress.
- Pack introduced Bill Wyatt, recently selected as SLCDA's the new executive director. Wyatt thanked the Board for their warm welcome and stated that he is thrilled to be in Salt Lake City. Wyatt expressed his excitement for being a part of the Airport Redevelopment Program and SLC's outstanding reputation.
- Pack reported on the results of the third quarter passenger survey. SLC received lower marks for its WiFi (insufficient bandwidth in some areas has been corrected) and availability of parking. Higher marks were received for clear, easy to follow signage and the concessions program.
- Pack noted that Transportation Network Companies now account for 55% of ground transportation activity at SLC and 37% of ground transportation revenues.
- Pack announced a traffic shift on Terminal Drive beginning October 27<sup>th</sup>. The main entrance road will shift to the east as work progresses on the elevated roadway.
- Pack stated that the November board meeting has been moved to December on the recommendation of bond counsel due to the timing of disclosures. The December meeting will include the audit report and Board nominations. Pack added that the Airport and Airline Affairs Committee (AAAC) will also be held in December, and introduced AAAC Chair Donnell Harvey of Delta Air Lines.
- Pack presented the Board members with an SLC challenge coin and explained he would be giving them to staff members as well.

Gallivan asked about the timing of the executive director transition.

- Pack noted that Wyatt will begin on November 1<sup>st</sup>.
- Pack will depart shortly after Wyatt's arrival, although he will remain available during the transition.

Cyndy Miller recognized Pack for his service as the interim executive director.

Igor Best-Devereux asked for an update on TRAX and minimum guaranteed fares to the city for ground transportation providers.

- Pack reported that the City Council met last night and appeared to be supportive of an at grade solution for the future airport TRAX station.
- Pack explained that the Council was not prepared to give permanent approval for minimum standard fares to the city, but temporary approval is in place and there are no concerns about renewing the approval as needed. Marco Kunz added that the Airport has established six months as our practice and the issue should be considered resolved.

Pinnock thanked Patrick Leary for his attendance. Leary thanked members of the Board for their time spent on the executive director recruitment process.

Pinnock excused J.T. Martin who is traveling.

### **C. Airport Redevelopment Program Update**

Mike Williams, Airport Redevelopment Program (ARP) Director, presented an update on the ARP (presentation on file). Main points included were:

- CGMP #4 – Landside and Airside Enabling status
- CGMP #5 – Terminal/South Concourse West/Gateway status
- CGMP #6 – Roadways/Parking Garage/Central Utility Plant status
- CGMP #7 – Baggage Handling System status
- CGMP #9 – Apron Paving – Taxilane 20/21 status
- North Concourse Project status
- Project statistics
- Overall program construction and paving sequence
- Near term schedule
- Overall capital equipment costs

Pinnock asked what the peak number of workers will be on the project. Williams answered that the total number is expected to reach approximately 2,000 for the entire program in early 2019.

Senator Karen Mayne acknowledged the increased number of local trade contractors on the project. Williams indicated that many of the most recent bids, especially on the north concourse enabling, apron paving, and fueling packages, are expected to go to local trade contractors as well.

Best-Devereux asked for a summation of the design and bid process for the north concourse.

- Williams explained that HOK has already incorporated the value engineering analysis determined from the south concourse into the north concourse drawings.
- Revised bids will be obtained on the 90% drawings and updated estimates from the construction teams will include an escalation contingency because of the current competitive market.
- Labor costs are highly variable today and difficult to project.
- Materials are being purchased as quickly as possible to mitigate the cost risk.

Best-Devereux wondered if we have seen scope creep on the original plans.

- Williams stated that the airport has done a great job of managing the scope and complimented Ed Cherry for the efficiencies and cost reductions made by his team.

#### **D. Air Service Overview and Industry Trends**

David Dague, Executive Vice President of InterVISTAS Consulting Group, presented an update on the TRP (presentation on file). Main points included were:

- U.S. industry update
  - Operating margins for the major U.S. airlines
- Air service trends
  - Percent change in enplaned passengers
  - Percent change in seats from large hub airports
  - Percent change in Delta seat capacity
  - Change in Delta seats per departure
  - Percent change in domestic O&D passengers
  - Stage adjusted average domestic one-way fares
  - Load factors
  - Top 10 unserved markets from Salt Lake City
  - Top 20 Salt Lake City International O&D markets
- Development of Strategic Air Service Plan

Pinnock asked Dague if he believed SLC will have the physical capacity during and after the ARP construction to support the growth the market is driving.

- Dague answered that there are many mechanisms the carriers will use if there are gate constraints, including upgauging equipment, adjust schedules and add services at off-peak times.
- Dague remarked that SLC's cost structure coming out of the ARP will remain one of the lowest in the industry, which is critical to maintain competitiveness.

Mayne suggested working with the tourism industry to reach out to the European market and promote travel during off-peak months due to differing vacation schedules. Dague agreed with the importance of understanding visitor dynamics and the promotion of SLC as a good airport to connect to when traveling internationally.

Bitner inquired about the potential impact from the Asian market, especially China.

- Dague noted that China is already the largest Asian market out of SLC today.
- International markets are regulated by bilateral agreements, and the U.S./China agreement has weekly frequency limitations which are maxed.
- Air carriers have not pressured congress to reopen the agreement for negotiation.

Pinnock thanked Pack for his transparency and willingness to communicate with the Board while serving as the interim director.

The next Board meeting will be held on December 13, 2017.

Larry Pinnock adjourned the meeting at 9:24 a.m.

\_\_\_\_\_  
J.T. Martin, Chair

\_\_\_\_\_  
Date

\_\_\_\_\_  
Jacqueline M. Biskupski, Mayor

\_\_\_\_\_  
Date



DEPARTMENT OF AIRPORTS  
BOARD MEETING

13 December 2017

DISCUSSION ITEMS

## SALT LAKE CITY AIRPORT BOARD

**AGENDA:** DISCUSSION ITEM (B)  
**DATE:** 13 December 2017  
**TO:** Airport Board  
**FROM:** Bill Wyatt, Executive Director  
**SUBJECT:** **Executive Director's Report**

---

Bill Wyatt will present a monthly informational report to the Board, may include:

1. ARP progress
2. Ground transportation update
3. Concessions and rental cars
4. Airport safety and security
5. Airport facilities and operations
6. General aviation
7. Passenger and airport users
8. Environmental matters
9. Financial condition
10. Legislative issues
11. Airlines
12. Communications and marketing

## SALT LAKE CITY AIRPORT BOARD

**AGENDA:** DISCUSSION ITEM (C)  
**DATE:** 13 December 2017  
**TO:** Airport Board  
**FROM:** Bill Wyatt, Executive Director  
**SUBJECT:** **Airport Redevelopment Program Update**

---

Mike Williams, Airport Redevelopment Program (ARP) Director, will present an update on the SLC Airport Redevelopment Program (presentation on file).

# Airport Redevelopment Program

Status Update: 12-05-2017



Salt Lake City International Airport



# CGMP# 4 – Landside and Airside Enabling

Project: CGMP# 4 - Landside and Airside Enabling

Budget: \$81.09M EAC: \$77.21M

Terminal/South Concourse West/Gateway/Roadways/Airside and Landside Enabling and Central Utility Plant Hydronic Piping

Current Status

Schedule		Recent Milestones Achieved
Activity	Target Date	
Complete Seq 2 Tunnel Excavation	Dec 2016 A	* Mid-Concourse Tunnel Structural Tie-in Progressing
Complete SCW Surcharge	Dec 2016 A	* Mid-Concourse Tunnel Tie-in Walls underway
Complete West Lift Station Pumps	Mar 2017 A	* Mid-Concourse Tunnel Tie-in Lids Starts next Week
Complete SCW Ductbank	Mar 2017 A	* Close-out Process Underway
Complete Gateway Hydronic Piping	May 2017 A	* Final CGMP Close-out Dependent on Mid-Concourse Tunnel Construction Completion
Substantial Completion	Apr 2017	

**Concerns/Issues/Risks**

\* None at this time



# CGMP# 5 – Terminal/South Concourse West/Gateway

Project: CGMP# 5 - Terminal/Gateway/South Concourse West Budget: \$788.35M EAC: \$788.35M

Terminal/Gateway/South Concourse West - Foundations, Structure, Building Envelope and Build-out

## Current Status

Schedule		Recent Milestones Achieved
Activity	Target Date	
Start Driven Piles	Dec 2016 A	* SCW Structural Steel Erection complete.
Complete Terminal Tunnel Backfill	Sep 2017 A	* Terminal Structural Steel Erection underway in Areas A, B, C and D.
Complete SCW Slab on Grade	Sep 2017 A	* Gateway Footings and Foundations underway.
Complete SCW Structural Steel	Nov 2017 A	* Introduce Temporary Heat next Week.
Complete Terminal Foundations	Feb 2018	* Started SCW Exterior Masonry at Nodes.
Complete Terminal Structural Stl	Jul 2018	* Preparing for Curtainwall and Clerestory Start.
Concerns/Issues/Risks		
* Structural Steel Erection progress.		

# CGMP# 6 – Roadways/Parking Garage/Central Utility Plant

**Project: CGMP# 6 - Parking Garage/Roadways/Central Utility Plant/Project-Wide Special Systems**

**Budget: \$363.86M EAC: \$363.86M**

**Parking Garage/Rental Car Ready Return/Elevated and At-Grade Roadways/Central Utility Plant/Project-Wide IT and Special Systems**

**Current Status**

Schedule		Recent Milestones Achieved
Activity	Target Date	
Issue NTP	Dec 2016 A	<ul style="list-style-type: none"> <li>* Parking Garage Level 2 Soffolding and Concrete Proceeding.</li> <li>* Parking Garage SOG Completes this week.</li> <li>Parking Garage Columns Lvl 2 - Lvl 3 Underway</li> <li>* Roadways Pile Driving between Exit Road and Jockey Road.</li> <li>* CUP Masonry and Roofing underway.</li> </ul>
Start Central Utility Plant Concrete	Feb 2017 A	
Start Parking Garage Driven Piles	Mar 2017 A	
Complete CUP Chiller Installation	Dec 2017	
CUP Operational	May 2018	
Parking Garage Roofing Complete	Aug 2019	

**Concerns/Issues/Risks**

\* None at this time.



# CGMP# 7 – Baggage Handling System

**Project: CGMP# 7 - Baggage Handling System including TSA Screening Area**

**Budget: \$86.09M EAC: \$86.09M**

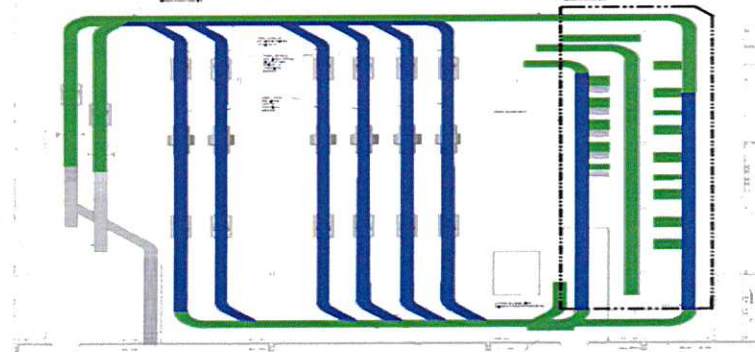
**Terminal/Gateway/South Concourse West and TSA Screening Area Complete Baggage Handling System IT and Special Systems**

**Current Status**

Schedule		Recent Milestones Achieved
Activity	Target Date	
Issue NTP	Sep 2016 A	* BIM Coordination Sessions with MEP continue.
Start BHS Hanger Installation	Aug 2017 A	* BHS Conveyor Installation Started.
Install TSA Provided Equipment	Jun 2019	* BHS Conveyor Fabrication Continues.
Start BHS Testing and Commission	Nov 2019	* TSA Reimbursement Invoicing to Date Totals \$758,000 and Payments Total \$548,000.
Start TSA BHS Acceptance Testing	Mar 2020	
BHS Substantial Completion	May 2020	

Concerns/Issues/Risks
* None at this time.





# CGMP# 9 – Apron Paving – Taxilane 20/21

Project: CGMP# 9 - Apron Paving - Taxilane 20/21 and Taxiway A/B

Budget: \$26.76M EAC: \$26.76M

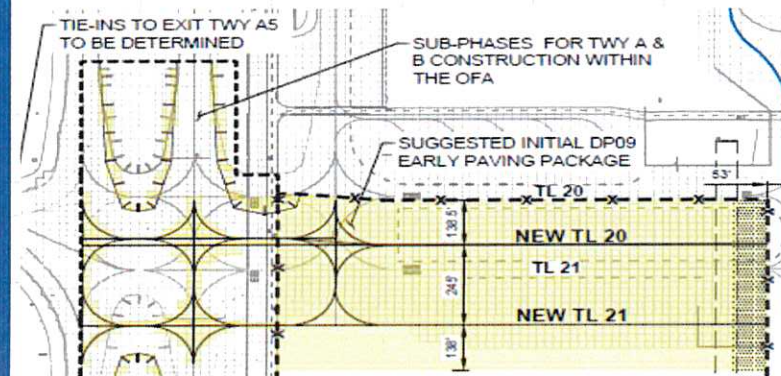
Initial Portion of Apron Paving that will Utilize \$10 million in AIP Funding and also Support Fence Installation for North Concourse Site.

## Current Status

Schedule		Recent Milestones Achieved
Activity	Target Date	
Issue NTP	April 2017 A	* Taxiway 'A' and 'B' Open to Support Deicing.
Taxiway 'B' Reopens	Sep 2017 A	* Taxilane 20 Open Prior to Thanksgiving Increased Traffic
Taxilane 21 Reopens	Dec 2017	* Taxilane 21 Scheduled to Open 12/14/2017
Taxiway 'A' Complete	Nov 2017 A	* CGMP# 9A for SCW Apron Paving and Hydrant Fueling target Execution 12/21/2017.
CGMP# 9 Bulletin# 1 Close-out	Mar 2018	

### Concerns/Issues/Risks

\* None at this time.



# North Concourse Project

Project: North Concourse Project

Budget: TBD EAC: TBD

## North Concourse Phase 1 and Phase 2 and Associated Airfield Scope of Work

### Current Status

Schedule		Recent Milestones Achieved
Activity	Target Date	
Issued Design Documents	May 2017 A	<ul style="list-style-type: none"> <li>* AOJV Started Sitework for Construction Field Offices.</li> <li>* AOJV Submitting Recommendations to Award for DP15 - Enabling Phase 1 Scopes of Work.</li> <li>* HOK Issued DP16 - North Concourse Phase 1, DP17 - Baggage Handling Systems and DP18 - Apron Paving/Hydrant Fueling for Construction.</li> <li>* AOJV Finalizing RFQ to Release DP16, DP17 and DP18 for Bid.</li> </ul>
Submit 5/12 Deliverable Comments	June 2017 A	
Receive Enabling Design Package	June 2017 A	
Receive CMAR/Consultant Estimate	July 2017 A	
Complete Estimate Reconciliation	Oct 2017 A	
Start Enabling Construction	Jan 2018	
<b>Concerns/Issues/Risks</b>		
* Trade Contractor Capacity to Bid.		



# Project Statistics

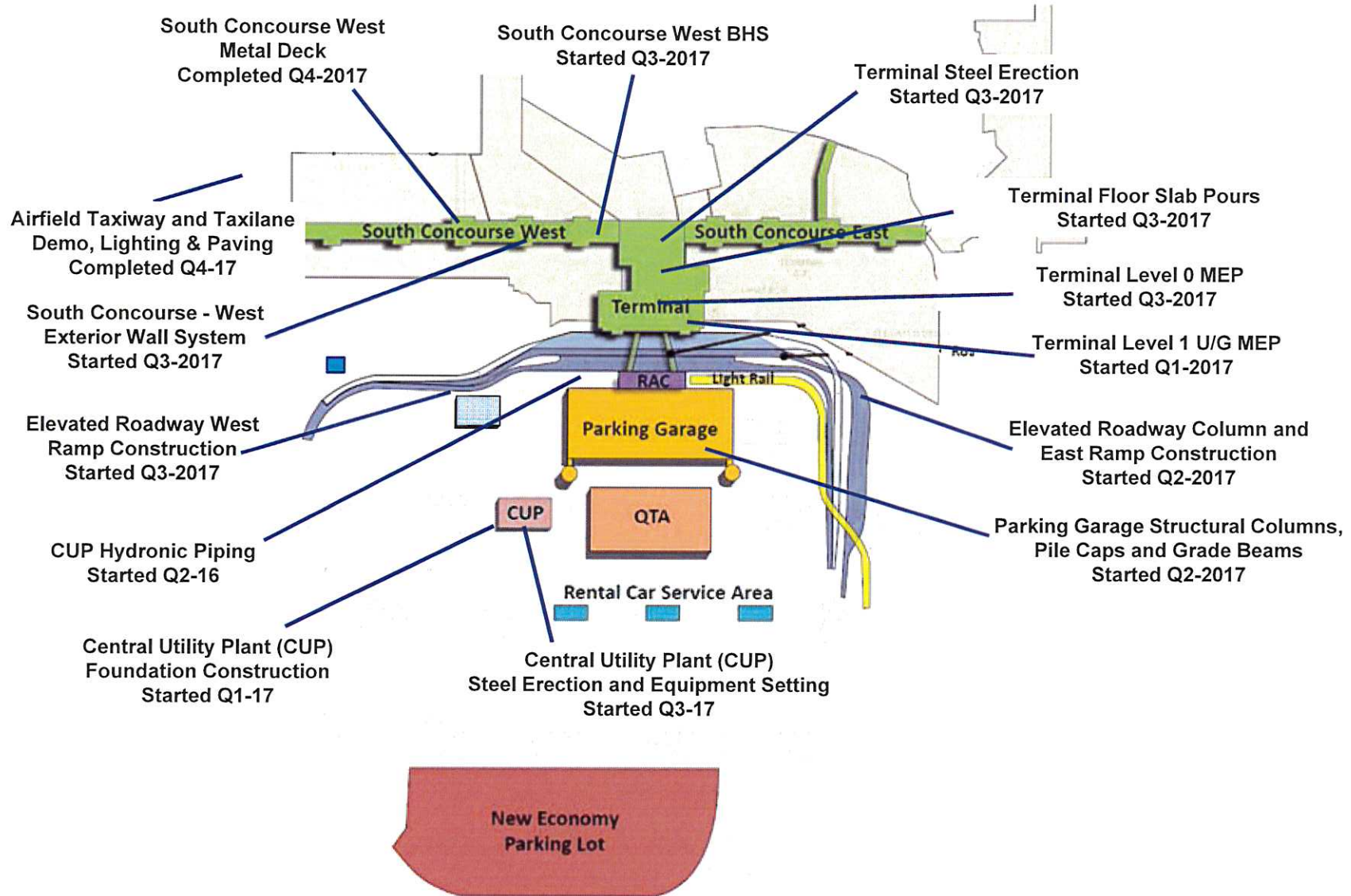
Safety Statistics Through 12/01/2017  
 867 Days without a Lost Time Injury  
 1,687,296 Hours Worked to Date

Trade Staffing 12/01/2017  
 832 Trade Workers on Site

Contract Local/Non-Local Awarded Statistics			
Local Trades	Dollar Value	Trade Count	Percentage
Total Local (Wasatch Front) Contractors	\$750,562,831	71	67%
Total Out of State Contractors	\$377,144,995	16	33%
<b>Total Contract Awards</b>	<b>\$1,127,707,826</b>	<b>87</b>	<b>100%</b>

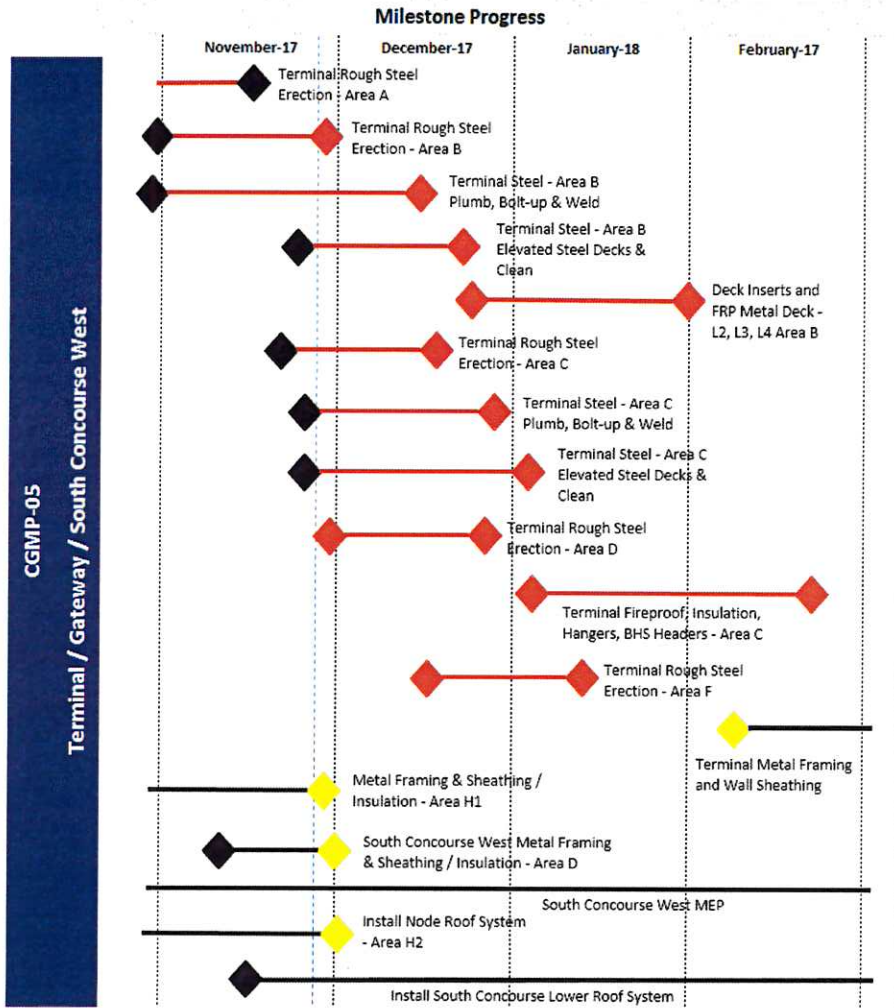
Contract Union/Merit Shop Awarded Statistics			
Union Trades	Dollar Value	Trade Count	Percentage
Total Union Contractors	\$369,591,438	20	33%
Total Merit Shop Contractors	\$758,116,388	67	67%
<b>Total Contract Awards</b>	<b>\$1,127,707,826</b>	<b>87</b>	<b>100%</b>

# Overall Program Construction & Paving Sequence



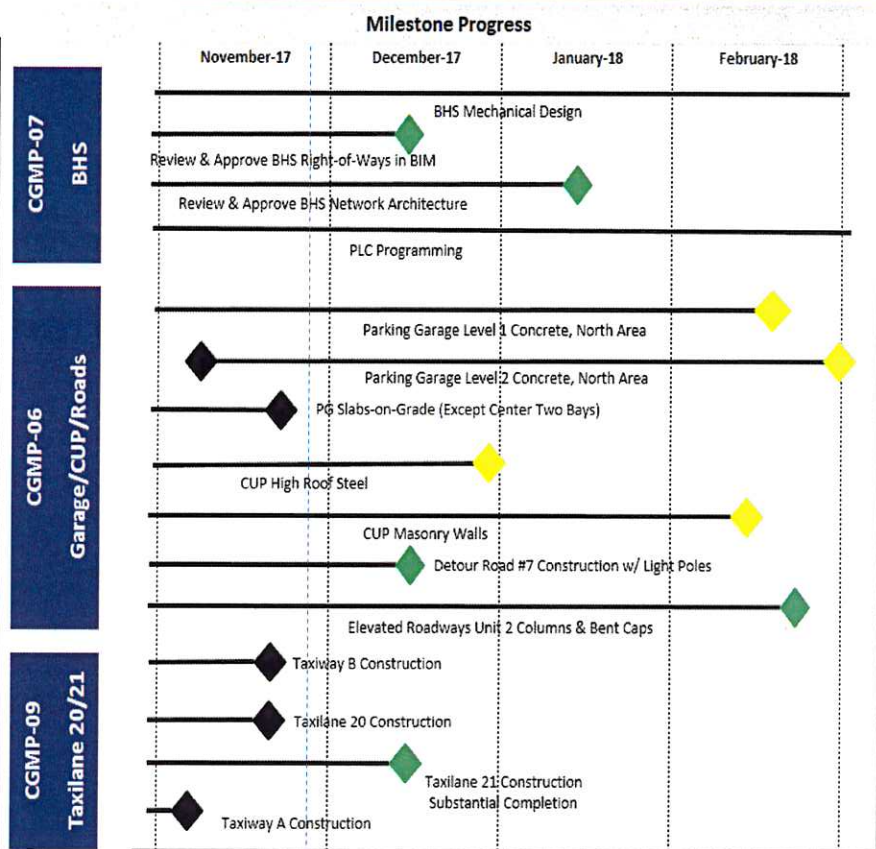
# Near Term Schedule

## Schedule Overview



This month's schedule is based on the November 2017 Update. Overall the Program is approximately 1 week later than last month's schedule.

## Schedule Overview



# Overall Capital Program Costs

Construction Budget November 2017		Budget	Spent	Committed	Uncommitted	EAC
Preconstruction Services	\$	10,748,596	\$ 9,575,407	\$ 9,575,407	\$ -	\$ 9,575,407
General Conditions Services	\$	91,179,758	\$ 35,594,285	\$ 78,593,872	\$ 11,127,306	\$ 89,721,178
CGMP 03 - QTA, RSS, South Parking Lot	\$	94,000,000	\$ 88,721,327	\$ 88,721,326	\$ -	\$ 88,721,327
CGMP 04 - Landside/Airside Enabling Work	\$	81,096,442	\$ 74,641,128	\$ 81,096,442	\$ -	\$ 78,417,393
CGMP 05 - Terminal, South Concourse West , Gateway	\$	795,346,442	\$ 190,535,476	\$ 788,346,442	\$ -	\$ 788,346,442
CGMP 06 - Parking Deck, Roadways, Central Utility Plant	\$	377,293,285	\$ 70,653,046	\$ 363,855,782	\$ -	\$ 363,855,782
CGMP 07 - Baggage Handling System	\$	86,085,766	\$ 6,998,015	\$ 86,085,766	\$ -	\$ 86,085,766
CGMP 08 - Not Used	\$	-	\$ -	\$ -	\$ -	\$ -
CGMP 09 - Apron Paving SCW/Hydrant Fueling	\$	56,791,127	\$ 18,352,581	\$ 26,761,609	\$ 30,029,518	\$ 56,791,127
CGMP 10 - South Concourse East	\$	212,143,940	\$ -	\$ -	\$ 212,143,940	\$ 212,143,940
CGMP 11 - Apron Paving SCE/Hydrant Fueling	\$	75,699,182	\$ -	\$ -	\$ 75,699,182	\$ 75,699,182
<b>Total Construction Budget</b>	\$	<b>1,880,384,538</b>	\$ <b>495,071,265</b>	\$ <b>1,523,036,646</b>	\$ <b>328,999,946</b>	\$ <b>1,849,357,544</b>
Soft Cost Budget	\$	251,316,222	\$ 149,423,450	\$ 181,398,926	\$ 69,917,296	\$ 251,316,222
Owners Reserve	\$	44,852,234	\$ -	\$ -	\$ 73,200,177	\$ 75,879,228
<b>Total TRP Budget</b>	\$	<b>2,176,552,994</b>	\$ <b>644,494,715</b>	\$ <b>1,704,435,572</b>	\$ <b>472,117,419</b>	\$ <b>2,176,552,994</b>
North Concourse (NCP) Concept Budget	\$	737,000,000	\$ 18,543,436	\$ 48,491,560	\$ 688,508,440	\$ 737,000,000
CIP Multi-Year Budget	\$	191,432,000	\$ -	\$ -	\$ 191,432,000	\$ 191,432,000
<b>Total Capital Program Budget</b>	\$	<b>3,104,984,994</b>	\$ <b>663,038,150</b>	\$ <b>1,752,927,132</b>	\$ <b>1,352,057,859</b>	\$ <b>3,104,984,994</b>

# Job Progress Photos – Terminal Building



Terminal steel and metal deck progress, viewed from the north



Erecting Terminal Roof Trusses at Canyon.



Erecting Terminal Roof Trusses at Canyon.

# Job Progress Photos – South Concourse West



SCW construction progress



SCW exterior wall sheathing progress



Slab and wall progress at Mid-Concourse Tunnel



# Job Progress Photos – Parking Garage, Roadways, CUP



Parking Garage progress



Elevated Roadway bent cap progress



Central Utility Plant (CUP) building progress

# Job Progress Photos - Airfield



Taxilanes 20 & 21.



New striping at Taxiways A and B, and Ramp A5.



Electricians installing new LED centerline lighting.

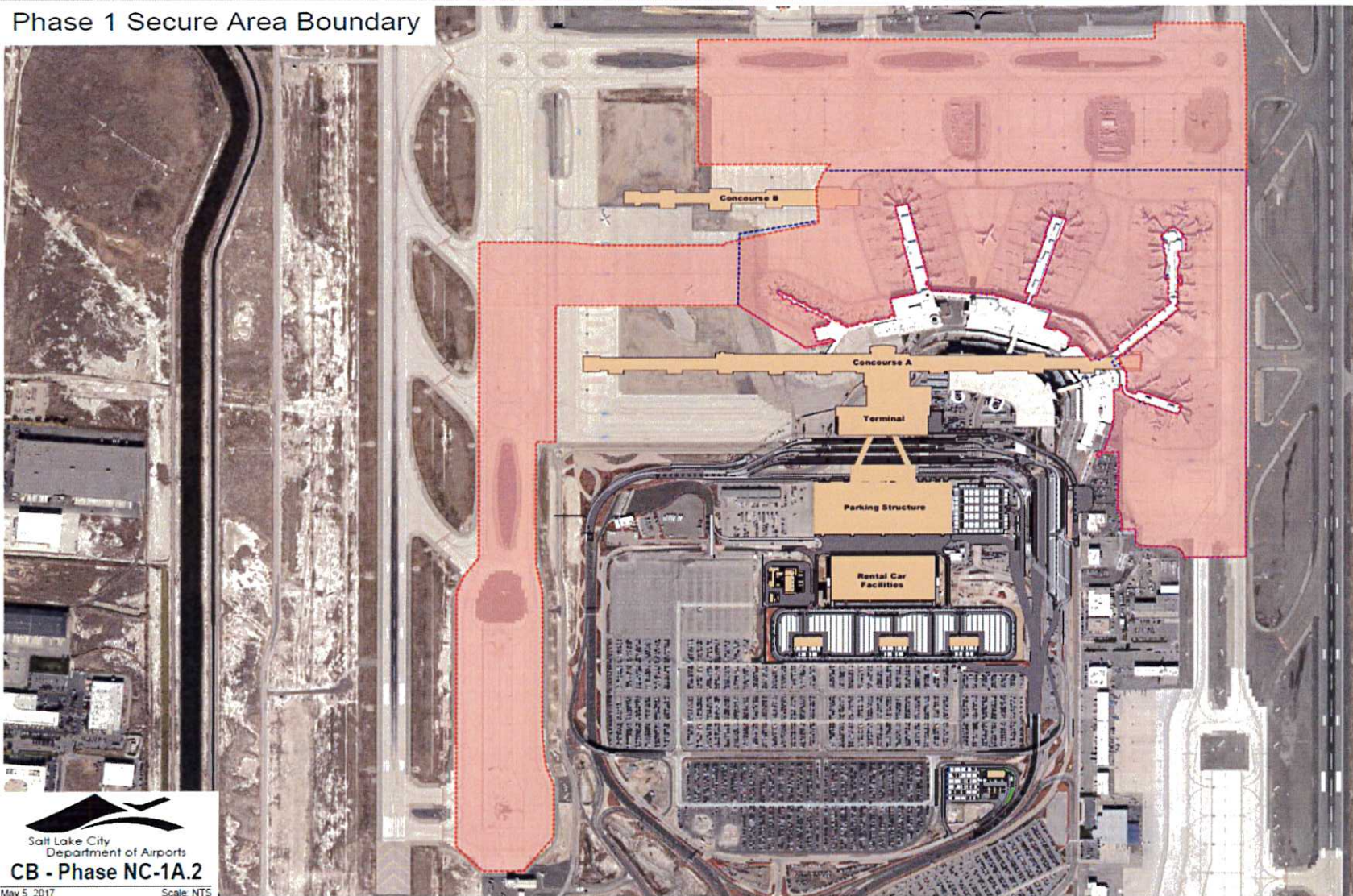
# Job Progress Aerials



Terminal / Gateway Area

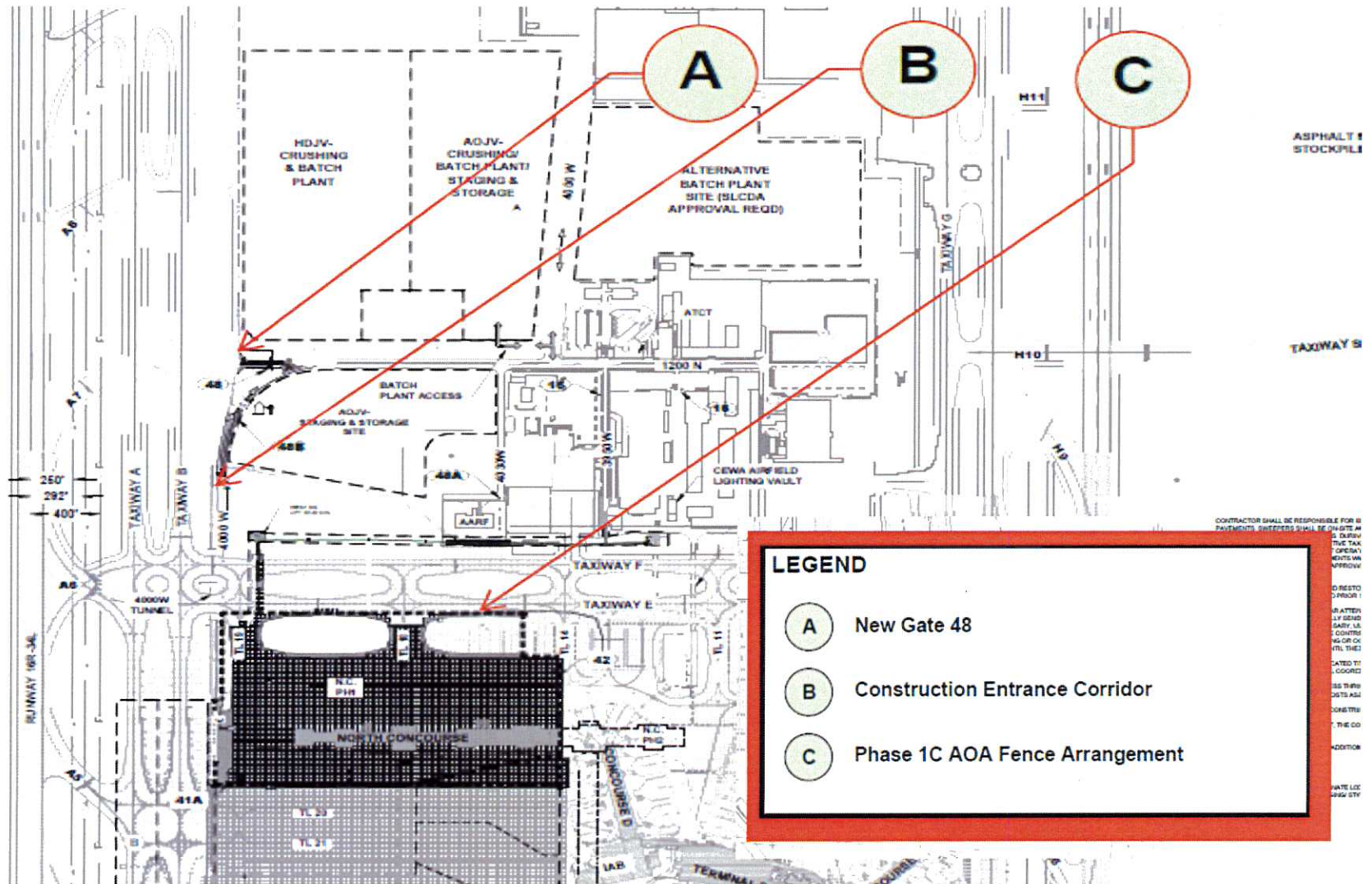
# North Concourse Secure Area

Phase 1 Secure Area Boundary

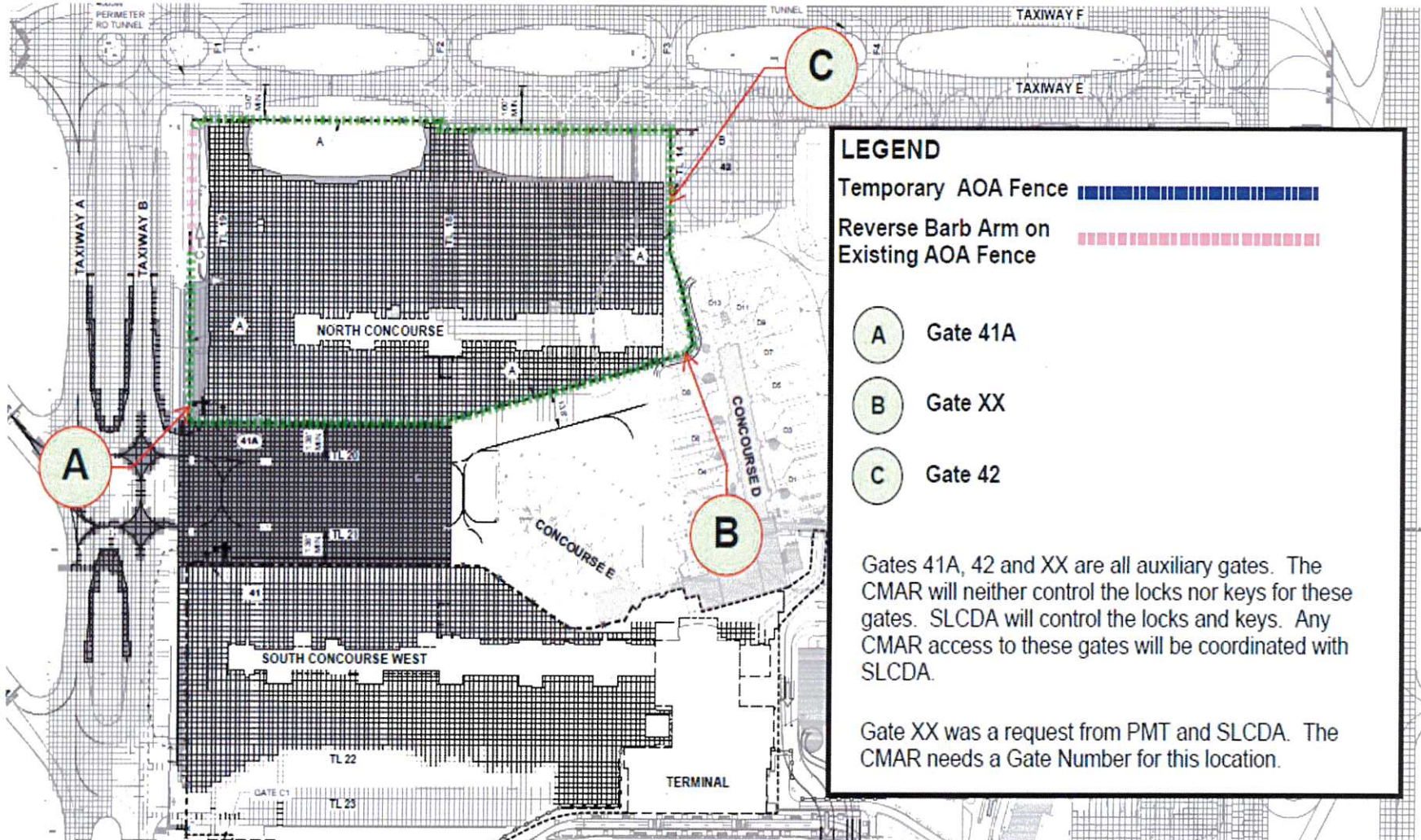


Salt Lake City  
Department of Airports  
**CB - Phase NC-1A.2**  
May 5, 2017 Scale: NTS

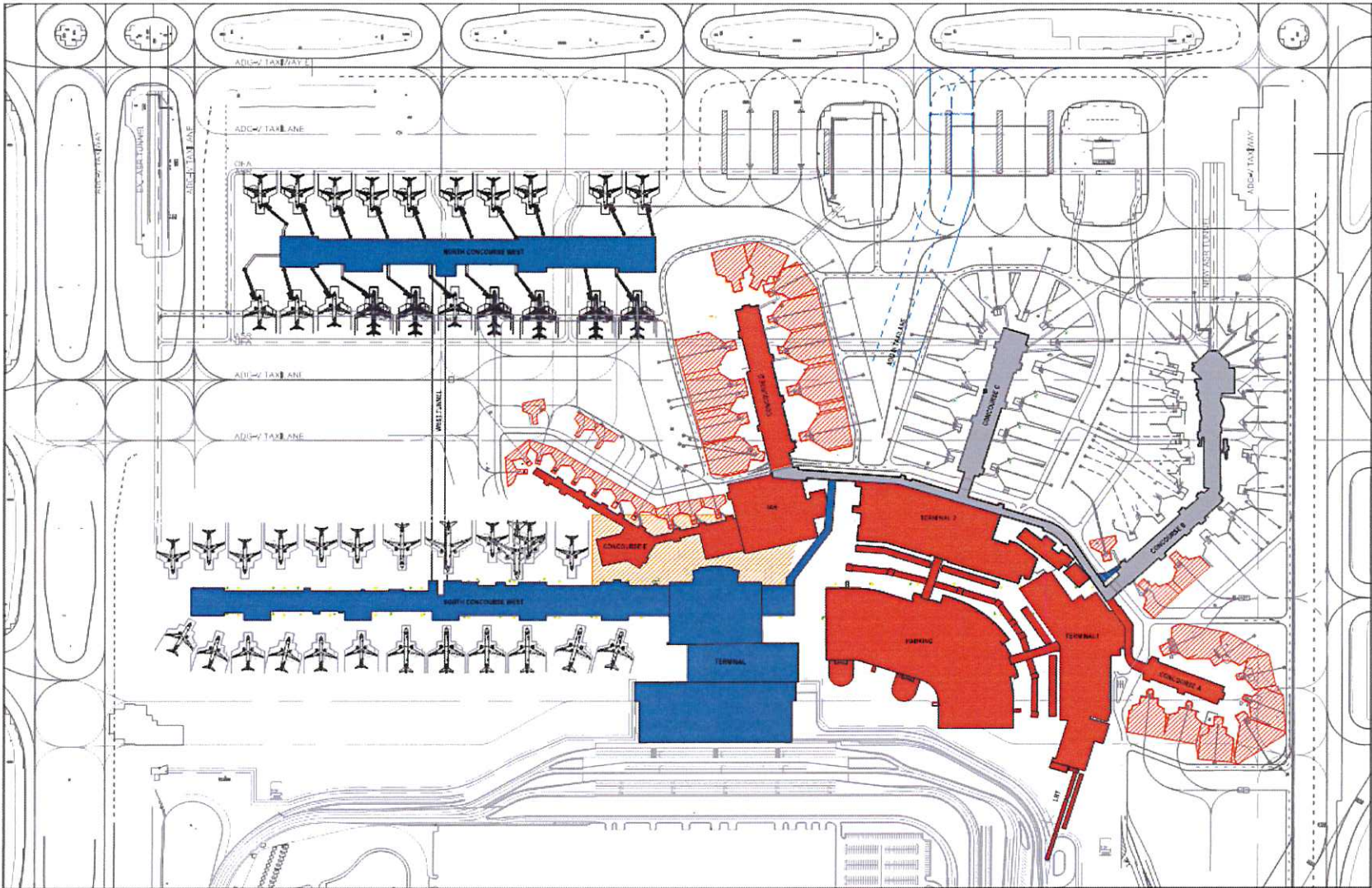
# North Concourse Site Access



# North Concourse Construction Site Fencing

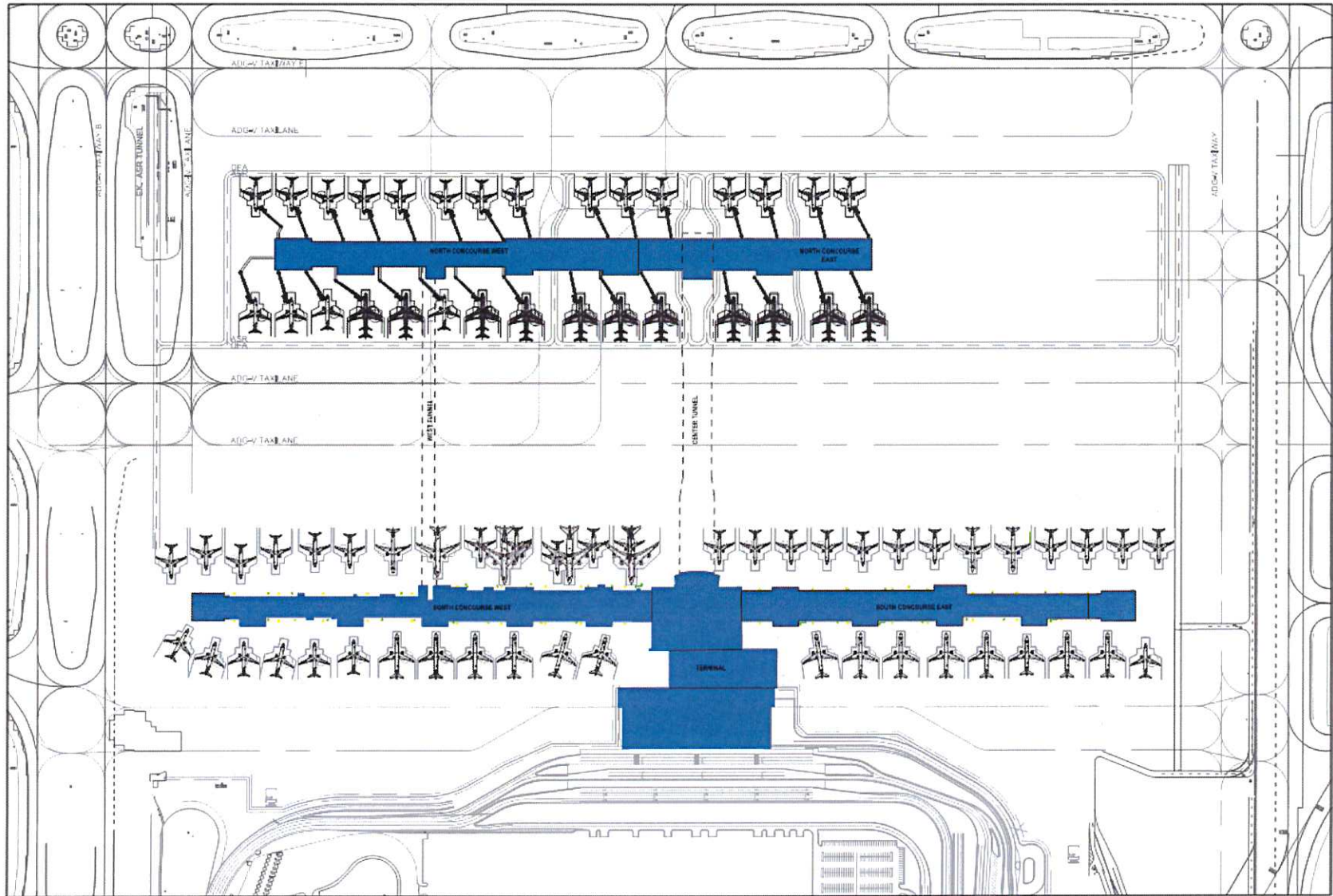


# Phase 1 Complete and Start of Demolition



■ Demolition    ■ Construction complete

# Current Program Final Phase Completed





## SALT LAKE CITY AIRPORT BOARD

**AGENDA:** DISCUSSION ITEM (D)  
**DATE:** 13 December 2017  
**TO:** Airport Board  
**FROM:** Bill Wyatt, Executive Director  
**SUBJECT:** **Public Meetings Training**

---

Marco Kunz will present the "Open and Public Meetings Training" which is required by State law to the Board.

SALT LAKE CITY DEPARTMENT OF  
AIRPORTS

# Airport Advisory Board Training

2017



# UTAH OPEN AND PUBLIC MEETINGS ACT



Utah Code  
§§52-4-101 through 305

# WHAT DOES THE OPEN MEETINGS ACT DO?



Requires **MEETINGS** of a **PUBLIC BODY** to be open to the public, unless an **EXCEPTION** is available under the Act that allows the meeting to be **CLOSED**.

# PUBLIC BODY

The **AIRPORT BOARD** is a public body for purposes of the Act

## MEETING

- **CONVENING**
- At least a **QUORUM**
- To **DISCUSS, RECEIVE COMMENTS,**  
or **ACT**

# Which gatherings of the Airport Advisory Board are subject to the Act?

---

## Yes:

- Electronic Meetings
- Retreats, Workshops

## No:

- Chance meetings, group photos, ceremonial events
- No Quorum (Simple majority of all Board members specified by Ordinance)

# WHAT DOES THE ACT REQUIRE?

**Minimal compliance in 3 Basic Areas:**



**NOTICE**



# WHAT **PUBLIC NOTICE** IS REQUIRED?

## Annual Meeting Schedule:

- Scheduled meetings: **date, time, and place**

## Each meeting:

- **TIME:** Not less than 24 hours
- **CONTENT:** **Agenda, Date, Time, Place**
- **POSTED|PUBLISHED**

## Emergency Meetings:

- Best notice practicable
- Attempt to notify all Board members
- **MAJORITY** of Board members must approve holding the meeting.





# »» Agenda

1. Reasonable Specificity – Each topic

2. Matters Not on the Agenda

Public Comments – No final action

# Does the Act apply to **CLOSED MEETINGS?**

No, **if**

- The meeting is closed to discuss **certain topics**; and
- It is closed using **Specified Procedures**.

# CLOSED MEETINGS

A meeting may be closed **ONLY** to discuss **SPECIFIED TOPICS**

- ◇ An INDIVIDUAL: character, professional competence, physical or mental health
  - ◇ COLLECTIVE BARGAINING strategy;
  - ◇ Pending or reasonably imminent LITIGATION;
  - ◇ REAL PROPERTY purchase, exchange, lease (when it would disclose appraisal or value and prevent transaction) or sale;
  - ◇ Deployment of SECURITY DEVICES
  - ◇ CRIMINAL CONDUCT investigations
- A meeting also may be closed for the Board to receive the ADVICE of its LEGAL COUNSEL.



# CLOSED MEETINGS

## Procedure

1. Quorum present
2. Two-thirds of Board members present approve the closing.
3. Publicly announce and enter in the minutes:
  - (a) General reason for closing meeting
  - (b) Location of meeting
  - (c) Vote by name





What  
**Records**  
are required?

# OPEN MEETING RECORDS

- **WRITTEN** minutes & **RECORDING**  
(SITE VISIT : EITHER, IF NO VOTE TAKEN)
- Minutes must include:
  - Date, Time, Place
  - Names of Board members present and absent
  - Substance of all matters proposed, discussed, or decided;
  - Record of each vote
  - Name of anyone who provided testimony/comments and summary of comments
  - Other information a Board member requests
- **OFFICIAL RECORD = WRITTEN MINUTES**



# CLOSED MEETINGS RECORDS

- **RECORDING** required - Written minutes optional
- **MUST INCLUDE**
  - Date, time, and place of the meeting
  - Names of all present and absent  
(unless disclosure would impair confidentiality necessary for original purpose of closing the meeting)
- **NO RECORD REQUIRED** if discussing
  - Character, professional competence, or physical or mental health of an individual
  - Deployment of security personnel, devices, or systems.  
*NOTE: Person presiding must sign sworn statement affirming sole purpose for closing meeting was to discuss protected matters.*
- **PROTECTED RECORDS** under GRAMA

**CONFIDENTIAL**

# ELECTRONIC MEETINGS RECORDS

Resolution Adopted ✓

## Notice

- Public notice of the meeting in usual way; and
- Post written notice at the anchor location;
- Provide Board members:
  - At least 24 hours notice
  - Description how to connect

## Anchor Locations

- One or more anchor locations for meeting, including Airport Board Room.
- Space for public








Is  
**Public Comment**  
allowed?

# PUBLIC COMMENT/PARTICIPATION

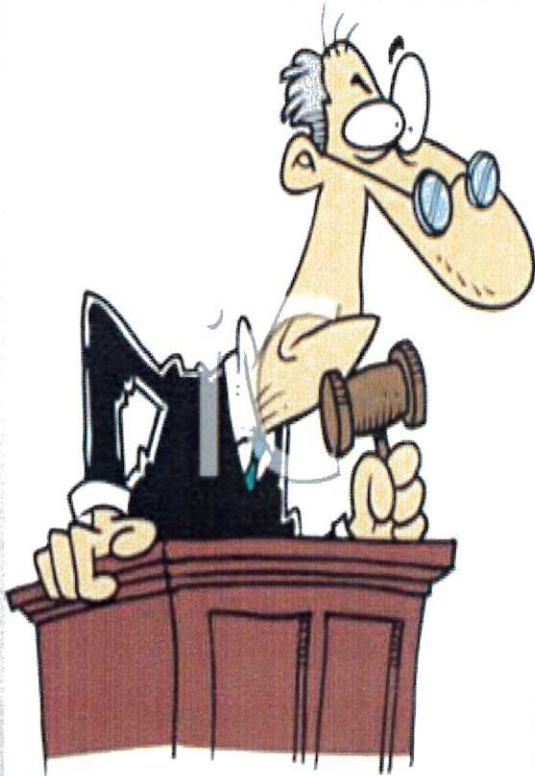


- At **DISCRETION** of Board Chair
- **TIME LIMITS** for each comment
- May limit to **AGENDA**
- No **FINAL ACTION** if not on agenda
- **WILLFULLY DISRUPTS AND**  
orderly conduct of meeting **SERIOUSLY COMPROMISED**  
--May REMOVE from meeting



What are the  
**Penalties**  
for violations of the  
Act?

# VIOLATIONS



## CRIMINAL OFFENSE

to knowingly violate the Open and Public Meetings Act

- Enforced by Attorney General and County Attorneys
- Private individuals can bring lawsuit
- Action can be voided, enjoined



# SALT LAKE CITY DEPARTMENT OF AIRPORTS



## SALT LAKE CITY AIRPORT BOARD

**AGENDA:** DISCUSSION ITEM (E)  
**DATE:** 13 December 2017  
**TO:** Airport Board  
**FROM:** Bill Wyatt, Executive Director  
**SUBJECT:** **Nominations for Board Chair and Vice-Chair**

---

The Board will be asked to make nominations for a new Board Chair and Vice-Chair. Voting will be conducted at the January 2018 meeting.

DEPARTMENT OF AIRPORTS  
BOARD MEETING

13 December 2017

INFORMATIONAL ITEMS

# SALT LAKE CITY DEPARTMENT OF AIRPORTS

(An Enterprise Fund of Salt Lake City Corporation)

## Statements of Net Position

(Amounts in Thousands)

<i>October 31,</i>	<b>2017</b>	<b>2016</b>
<b>ASSETS</b>		
<b>Current Assets</b>		
Cash and cash equivalents	\$ 175,203	\$ 176,461
Restricted cash and cash equivalents	50,847	-
Investments	11,899	752
Airline and rental fees receivable	20,975	16,796
Other assets	4,206	3,964
<b>Total current assets</b>	<b>263,130</b>	<b>197,973</b>
<b>Noncurrent Assets</b>		
Restricted cash and cash equivalents	978,752	158,857
Restricted investments	25,384	-
Investments	32,765	44,369
Other assets	2,001	1,104
<b>Total noncurrent assets and investments</b>	<b>1,038,902</b>	<b>204,330</b>
<b>Capital assets</b>		
Land	104,590	99,348
Building and improvements	1,369,273	1,278,012
Equipment	141,313	140,191
Construction in progress	532,097	249,767
<b>Total capital assets - at cost</b>	<b>2,147,273</b>	<b>1,767,318</b>
Less accumulated depreciation	944,838	883,767
<b>Net capital assets</b>	<b>1,202,435</b>	<b>883,551</b>
<b>Total noncurrent assets</b>	<b>2,241,337</b>	<b>1,087,881</b>
<b>Total Assets</b>	<b>2,504,467</b>	<b>1,285,854</b>
<b>Deferred Outflows of Resources</b>	<b>11,948</b>	<b>10,181</b>
<b>Total Assets and Deferred Outflows of Resources</b>	<b>\$ 2,516,415</b>	<b>\$ 1,296,035</b>



# SALT LAKE CITY DEPARTMENT OF AIRPORTS

(An Enterprise Fund of Salt Lake City Corporation)

## Statements of Net Position

(Amounts in Thousands)

<i>October 31,</i>	<b>2017</b>	<b>2016</b>
<b>LIABILITIES</b>		
<b>Current Liabilities</b>		
Accounts payable	\$ 8,304	\$ 11,870
Accrued compensation	2,242	1,700
Interest payable	16,667	-
Other accrued liabilities	3,694	4,124
Deposits and advance rentals	205	4,172
<b>Total current liabilities</b>	<b>31,112</b>	<b>21,866</b>
<b>Noncurrent Liabilities</b>		
Revenue bonds payable	1,123,560	-
Noncurrent compensation liability	3,790	3,629
Net pension liability	27,424	25,465
Other accrued liabilities	12,362	3,871
<b>Total noncurrent liabilities</b>	<b>1,167,136</b>	<b>32,965</b>
<b>Total Liabilities</b>	<b>1,198,248</b>	<b>54,831</b>
<b>Deferred Inflows of Resources</b>	<b>10,954</b>	<b>1,937</b>
<b>NET POSITION</b>		
Net investment in capital assets	854,360	883,550
Restricted for		
Capital projects	92,238	158,857
Debt service	187,259	-
Unrestricted	173,356	196,860
<b>Net Position</b>	<b>1,307,213</b>	<b>1,239,267</b>
<b>Total Liabilities, Deferred Inflows of Resources, and Net Position</b>	<b>\$ 2,516,415</b>	<b>\$ 1,296,035</b>

**SALT LAKE CITY DEPARTMENT OF AIRPORTS**  
(An Enterprise fund of Salt Lake City Corporation)  
**Statements of Revenues, Expenses, and Changes in Fund Net Position**  
(Amounts in Thousands)

<i>for the four month period ended October,</i>	<b>2017</b>	<b>2016</b>
<b>Operating Revenues</b>		
Airline revenue	\$ 24,849	\$ 23,090
Terminal concessions	6,246	6,004
Landside concessions	23,521	21,294
Lease revenue	2,019	1,847
General aviation	948	852
State aviation tax	1,151	1,071
Other revenue	2,474	1,626
Operating revenues	61,208	55,784
Less airline revenue sharing	(4,305)	(3,943)
Total operating revenues	56,903	51,841
<b>Operating Expenses</b>		
Salaries and benefits	16,982	16,237
Materials and supplies	2,973	2,859
Maintenance contracts	3,053	2,876
Charges and services	2,892	2,915
Utilities	2,213	2,228
Inter-governmental	2,072	2,043
Other expense	1,720	1,676
Total operating expenses before depreciation	31,905	30,834
<b>Operating Income Before Depreciation &amp; Amortization</b>	24,998	21,007
<b>Depreciation and Amortization Expense</b>	21,555	21,798
<b>Operating Income/(Loss)</b>	3,443	(791)
<b>Non-Operating Revenues (Expenses)</b>		
Passenger facility charges	16,346	14,871
Customer facility charges	5,392	5,954
Interest income	5,549	717
Interest expense	(15,415)	-
Gain on disposition of property and equipment	37	38
Net non-operating income	11,909	21,580
<b>Capital Contributions</b>		
Contributions and grants, principally Airport Improvement Program	4,053	3,263
Total capital contributions	4,053	3,263
<b>Net Position</b>		
Increase in net position	19,405	24,052
Net Position, beginning of period	1,287,808	1,222,235
Net Position, end of period	\$ 1,307,213	\$ 1,246,287

**SALT LAKE CITY DEPARTMENT OF AIRPORTS**

(An Enterprise fund of Salt Lake City Corporation)

**OPERATING REVENUES AND EXPENDITURES TO BUDGET (Unaudited)**

(Amounts in thousands)

	JUL - Oct 2017 ACTUALS	JUL - Oct 2017 BUDGET	SURPLUS/ DEFICIT	PERCENT CHANGE
<b>Revenues</b>				
Landing Fees	\$ 11,017	\$ 10,963	\$ 54	0.5%
Fuel Farm	178	176	2	1.0%
Aircraft Remain Overnight Fees	115	118	(4)	-3.2%
Cargo Bldg. & Ramp Use Fee	524	535	(11)	-2.1%
Security Charges to TSA	384	108	275	254.1%
Extraordinary Service Charges	20	23	(3)	-13.6%
Passenger Boarding Bridges	556	582	(26)	-4.5%
Tenant Telephone Fees	105	107	(2)	-2.2%
Terminal Rents	11,668	11,356	312	2.7%
General Aviation Hangars	418	403	15	3.6%
FBO Hangars/Fuel Oil Royalty	132	99	32	32.6%
Flight Kitchens	661	627	34	5.4%
Other Buildings & Office Space	1,819	1,788	31	1.8%
Food Service & Vending	3,789	3,726	63	1.7%
News/Gift Shop	2,141	2,047	94	4.6%
Car Rental	10,773	9,272	1,501	16.2%
Leased Site Areas	796	753	44	5.8%
Auto Parking/Ground Transportation	12,736	12,330	406	3.3%
Advertising	316	402	(87)	-21.5%
State Aviation Fuel Tax	1,151	1,037	114	11.0%
Military	38	51	(13)	-24.9%
Glycol Recycling Sales	142	75	67	89.2%
ARFF Training	279	301	(22)	-7.4%
Auxiliary Airport Fuel Sales	399	311	88	28.2%
Other	1,051	556	495	89.0%
Less: Airline Revenue Sharing	(4,305)	(4,062)	(243)	5.97%
<b>Total Operating Revenues</b>	<b>56,903</b>	<b>53,684</b>	<b>3,216</b>	<b>6.0%</b>
<b>Expenses</b>				
Salary & Wages	11,740	11,695	(44)	-0.4%
Employee Benefits	5,641	6,158	518	8.4%
Maintenance Supplies	1,583	3,625	2,042	56.3%
Automotive Supplies	849	1,008	159	15.7%
Other Supplies	540	813	272	33.5%
Insurance Premiums	1,338	861	(476)	-55.3%
Janitorial Service	2,393	2,416	24	1.0%
Maintenance Contracts	660	754	94	12.5%
Other Contractual Services	2,237	2,408	171	7.1%
Professional & Tech Service	655	1,844	1,189	64.5%
Utilities	2,213	3,080	867	28.1%
Administrative Service Fee	437	500	63	12.5%
Aircraft Rescue Fire Fighting	1,634	1,516	(118)	-7.8%
Other Expenses	383	1,104	722	65.4%
Contingency Reserve	-	-	-	0.0%
Operating Expenses Before Capitalized Salaries	32,303	37,782	5,479	14.5%
Capitalized Salaries	398	398	-	0.0%
<b>Total Operating Expenses</b>	<b>31,905</b>	<b>37,384</b>	<b>5,480</b>	<b>14.7%</b>
<b>Operating Income</b>	<b>\$ 24,998</b>	<b>\$ 16,300</b>	<b>\$ 8,698</b>	<b>53.4%</b>

**SALT LAKE CITY DEPARTMENT OF AIRPORTS**

(An Enterprise fund of Salt Lake City Corporation)

**OPERATING REVENUES AND EXPENDITURES TO PRIOR YEAR (Unaudited)**

(Amounts in thousands)

	<b>JUL-OCT 2017</b>	<b>JUL-OCT 2016</b>	<b>SURPLUS/ (DEFICIT)</b>	<b>PERCENT CHANGE</b>
<b>Revenues</b>				
Landing Fees	\$ 11,017	\$ 10,152	\$ 865	8.5%
Fuel Farm	178	176	-	0.0%
Aircraft Remain Overnight Fees	115	118	(4)	-3.2%
Cargo Bldg. & Ramp Use Fee	524	533	(9)	-1.7%
Security Charges to TSA	384	107	277	259.1%
Extraordinary Service Charges	20	22	(2)	-11.2%
Passenger Boarding Bridges	556	541	14	2.7%
Tenant Telephone Fees	105	107	(2)	-2.2%
Terminal Rents	11,668	10,698	970	9.1%
General Aviation Hangars	418	404	14	3.3%
FBO Hangars/Fuel Oil Royalty	132	99	32	32.6%
Flight Kitchens	661	603	58	9.6%
Other Buildings & Office Space	1,819	1,815	4	0.2%
Food Service & Vending	3,789	3,609	180	5.0%
News/Gift Shops	2,141	2,010	131	6.5%
Car Rental	10,773	9,092	1,681	18.5%
Leased Site Areas	796	711	86	12.0%
Auto Parking/Ground Transportation	12,736	12,190	546	4.5%
Advertising	316	385	(70)	-18.1%
State Aviation Fuel Tax	1,151	1,071	80	7.5%
Military	38	38	(0)	0.0%
Glycol Recycling Sales	142	124	18	14.4%
ARFF Training	279	288	(9)	-3.1%
Auxiliary Airport Fuel Sales	399	-	399	100.0%
Other	1,051	892	159	17.9%
Less: Airline Revenue Sharing	(4,305)	(3,943)	(362)	0.0%
<b>Operating Revenues</b>	<b>56,903</b>	<b>51,842</b>	<b>5,061</b>	<b>9.8%</b>
<b>Expenses</b>				
Salary & Wages	\$ 11,740	11,079	660	6.0%
Employee Benefits	5,641	5,526	114	2.1%
Maintenance Supplies	1,583	1,710	(126)	-7.4%
Automotive Supplies	849	679	170	25.0%
Other Supplies	540	470	71	15.1%
Insurance Premiums	1,338	1,301	37	2.8%
Janitorial Service	2,393	2,231	162	7.2%
Maintenance Contracts	660	645	15	2.3%
Other Contractual Services	2,237	2,102	135	6.4%
Professional & Tech Service	655	814	(159)	-19.5%
Utilities	2,213	2,228	(14)	-0.6%
Administrative Service Fee	437	476	(39)	-8.2%
Aircraft Rescue Fire Fighting	1,634	1,567	67	4.3%
Other Expenses	383	375	8	2.0%
Operating Expenses Before Capitalized Salaries	32,303	31,203	1,100	3.5%
Capitalized Salaries	398	369	29	7.9%
<b>Total Operating Expenses</b>	<b>31,905</b>	<b>30,834</b>	<b>1,071</b>	<b>3.5%</b>
<b>Operating Income</b>	<b>\$ 24,998</b>	<b>\$ 21,008</b>	<b>\$ 3,989</b>	<b>19.0%</b>



**SALT LAKE CITY INTERNATIONAL AIRPORT  
AIR TRAFFIC STATISTICS AND ACTIVITY REPORT  
TEN MONTHS ENDED OCTOBER 2017**

	OCTOBER 2017	CHANGE	YTD 2017	CHANGE	12 MO ROLLING Ending 10/2017	CHANGE
<b>PASSENGERS</b>						
<i>DOMESTIC</i>						
Enplaned	988,616	4.24%	9,820,945	4.17%	11,600,095	4.45%
Deplaned	972,682	4.35%	9,770,425	4.06%	11,570,403	4.27%
<b>TOTAL DOMESTIC</b>	<b>1,961,298</b>	<b>4.29%</b>	<b>19,591,370</b>	<b>4.12%</b>	<b>23,170,498</b>	<b>4.36%</b>
<i>INTERNATIONAL</i>						
Enplaned	34,915	4.53%	390,836	21.97%	446,096	25.04%
Deplaned	38,513	13.15%	413,252	25.27%	467,482	28.14%
<b>TOTAL INTERNATIONAL</b>	<b>73,428</b>	<b>8.88%</b>	<b>804,088</b>	<b>23.65%</b>	<b>913,578</b>	<b>26.61%</b>
<b>TOTAL PASSENGERS</b>	<b>2,034,726</b>	<b>4.45%</b>	<b>20,395,458</b>	<b>4.77%</b>	<b>24,084,076</b>	<b>5.06%</b>
<b>LANDED WEIGHT</b>						
Air Carriers	1,120,480,545	2.33%	11,345,717,283	4.70%	13,446,517,152	5.21%
Cargo Carriers	90,690,171	4.24%	902,691,729	4.26%	1,121,211,881	2.86%
<b>TOTAL LANDED WEIGHT (LBS)</b>	<b>1,211,170,716</b>	<b>2.47%</b>	<b>12,248,409,012</b>	<b>4.67%</b>	<b>14,567,729,033</b>	<b>5.03%</b>
<b>MAIL</b>						
Enplaned	2,317,313	34.30%	20,197,402	17.50%	23,347,468	13.95%
Deplaned	1,400,482	23.69%	11,290,538	44.17%	13,538,644	35.98%
<b>TOTAL MAIL (LBS)</b>	<b>3,717,795</b>	<b>30.10%</b>	<b>31,487,940</b>	<b>25.85%</b>	<b>36,886,112</b>	<b>21.15%</b>
<b>CARGO</b>						
Enplaned	14,691,284	10.00%	145,991,055	7.93%	176,529,262	6.09%
Deplaned	17,414,886	12.42%	165,285,028	9.01%	201,601,939	9.78%
<b>TOTAL CARGO (LBS)</b>	<b>32,106,170</b>	<b>11.30%</b>	<b>311,276,083</b>	<b>8.50%</b>	<b>378,131,201</b>	<b>8.03%</b>
<b>MAIL &amp; CARGO</b>						
Enplaned	7,346	10.00%	72,996	7.93%	88,265	6.10%
Deplaned	8,707	12.41%	82,643	9.01%	100,801	9.78%
<b>TOTAL MAIL &amp; CARGO (TONS)</b>	<b>16,053</b>	<b>11.29%</b>	<b>155,639</b>	<b>8.50%</b>	<b>189,066</b>	<b>8.03%</b>
<b>AIRCRAFT OPERATIONS</b>						
Passenger Aircraft	20,428	0.53%	209,160	2.41%	248,376	2.73%
All-Cargo Aircraft	1,644	2.11%	16,380	0.89%	20,182	1.93%
General Aviation	4,603	11.80%	43,035	0.89%	49,821	-0.61%
Military	816	28.91%	6,229	5.43%	7,525	5.30%
<b>TOTAL AIRCRAFT OPERATIONS</b>	<b>27,491</b>	<b>3.04%</b>	<b>274,804</b>	<b>2.14%</b>	<b>325,904</b>	<b>2.21%</b>

**SALT LAKE CITY INTERNATIONAL AIRPORT  
PASSENGER TRAFFIC REPORT  
TEN MONTHS ENDED OCTOBER 2017**

	OCTOBER 2016	OCTOBER 2017	% CHANGE	YTD 2016	YTD 2017	% CHANGE	12 MO ROLLING Ending 10/2017	% CHANGE
<b>ENPLANED PASSENGERS</b>								
AIR CANADA	2,045	1,235	-39.6%	11,716	17,393	48.5%	18,730	59.9%
ALASKA	24,081	22,174	-7.9%	234,885	246,402	4.9%	293,420	8.4%
Horizon Air / Alaska	3,743	1,557	-58.4%	51,723	30,929	-40.2%	38,040	-39.0%
Skywest / Alaska	5,622	5,776	2.7%	70,099	62,634	-10.6%	73,415	-12.1%
AMERICAN	43,606	51,441	18.0%	517,652	533,145	3.0%	613,149	9.5%
American Eagle/Republic	-	-	0.0%	6,876	-	-100.0%	-	-100.0%
Compass	3,970	1,981	-50.1%	50,696	32,560	-35.8%	43,839	-19.0%
Envoy Air	1,594	-	-100.0%	21,003	1,137	-94.6%	3,924	-84.0%
American/Mesa Air	-	-	0.0%	2,893	-	-100.0%	-	-100.0%
SkyWest (American)	7,947	6,005	-24.4%	39,847	81,598	104.8%	91,067	97.8%
DELTA	504,490	540,226	7.1%	4,860,300	5,351,822	10.1%	6,292,980	10.5%
SkyWest (Delta Connection)	186,542	176,851	-5.2%	1,827,165	1,706,521	-6.6%	2,059,456	-6.2%
Compass (Delta Connection)	2,402	11,742	388.8%	114,232	76,960	-32.6%	83,845	-38.4%
FRONTIER	21,346	15,967	-25.2%	191,840	192,842	0.5%	232,418	4.7%
JETBLUE	20,994	28,439	35.5%	213,954	271,635	27.0%	314,703	27.1%
KLM ROYAL DUTCH AIRLINES	2,483	2,099	-15.5%	13,431	19,955	48.6%	19,955	48.6%
SOUTHWEST	104,975	109,159	4.0%	1,040,613	1,052,205	1.1%	1,238,952	1.6%
UNITED	17,175	19,467	13.3%	188,491	253,319	34.4%	297,711	31.2%
Express Jet	-	-	0.0%	446	31	-93.0%	31	-94.8%
Mesa Airlines (United Express)	-	2,247	100.0%	2,012	10,655	429.6%	11,978	417.6%
Republic Airways (United)	3,186	1,473	-53.8%	11,028	34,427	212.2%	38,638	211.0%
Shuttle America (United Express)	-	-	0.0%	9,194	-	-100.0%	477	-95.5%
SkyWest (United Express)	24,744	24,964	0.9%	260,151	228,823	-12.0%	270,203	-11.5%
Trans States	-	-	0.0%	3,291	275	-91.6%	896	-72.8%
US AIRWAYS	-	-	0.0%	-	-	0.0%	-	-100.0%
Charters	869	728	-16.2%	4,569	6,513	42.5%	8,364	58.8%
<b>TOTAL ENPLANED PASSENGERS</b>	<b>981,814</b>	<b>1,023,531</b>	<b>4.2%</b>	<b>9,748,107</b>	<b>10,211,781</b>	<b>4.8%</b>	<b>12,046,191</b>	<b>5.1%</b>
<b>DEPLANED PASSENGERS</b>								
AeroMexico	-	-	0.0%	5	-	-100.0%	-	-100.0%
AIR CANADA	2,090	1,130	-45.9%	12,185	16,789	37.8%	18,644	53.0%
ALASKA AIR	22,222	21,300	-4.1%	228,632	241,878	5.8%	287,136	8.5%
Horizon Air / Alaska	3,426	1,709	-50.1%	49,930	28,097	-43.7%	35,154	-41.9%
Skywest / Alaska	5,612	5,928	5.6%	71,228	65,901	-7.5%	76,896	-9.7%
AMERICAN	41,933	47,053	12.2%	512,749	525,810	2.5%	609,777	9.7%
American Eagle/Republic	-	-	0.0%	6,982	-	-100.0%	-	-100.0%
Compass	3,603	1,865	-48.2%	49,057	32,172	-34.4%	39,763	-24.1%
Envoy Air (American)	1,462	-	-100.0%	19,510	1,017	-94.8%	4,209	-82.0%
American/Mesa Air	-	-	0.0%	3,210	-	-100.0%	-	-100.0%
SkyWest (American)	8,053	5,674	-29.5%	38,913	78,632	102.1%	87,966	96.2%
DELTA	499,230	536,929	7.6%	4,853,061	5,340,279	10.0%	6,294,430	10.4%
SkyWest (Delta Connection)	186,666	175,883	-5.8%	1,829,776	1,696,202	-7.3%	2,050,076	-6.9%
Compass (Delta Connection)	2,377	11,701	392.3%	112,419	76,099	-32.3%	82,986	-38.4%
FRONTIER	20,470	16,111	-21.3%	191,366	196,952	2.9%	237,599	6.8%
JETBLUE	21,306	27,756	30.3%	213,288	269,419	26.3%	313,945	26.7%
KLM ROYAL DUTCH AIRLINES	2,925	4,638	58.6%	15,864	39,726	150.4%	39,726	150.4%
SOUTHWEST	101,420	106,086	4.6%	1,037,768	1,049,380	1.1%	1,239,768	1.5%
UNITED	15,862	18,064	13.9%	184,261	241,854	31.3%	284,972	27.1%
Express Jet	-	-	0.0%	452	75	-83.4%	75	-87.4%
Mesa Airlines / United Express	-	2,388	100.0%	2,053	11,141	442.7%	12,525	435.7%
Republic Airways (United)	3,273	1,524	-53.4%	11,667	35,846	207.2%	40,741	201.1%
Shuttle America (United Express)	-	-	0.0%	9,405	-	-100.0%	428	-96.0%
SkyWest (United Express)	23,075	24,690	7.0%	255,481	229,299	-10.2%	271,328	-8.8%
Trans States	-	-	0.0%	3,274	261	-92.0%	842	-74.3%
US AIRWAYS	-	-	0.0%	-	-	0.0%	-	-100.0%
Charters	1,198	766	-36.1%	6,266	6,848	9.3%	8,899	24.2%
<b>TOTAL DEPLANED PASSENGERS</b>	<b>966,203</b>	<b>1,011,195</b>	<b>4.7%</b>	<b>9,718,802</b>	<b>10,183,677</b>	<b>4.8%</b>	<b>12,037,885</b>	<b>5.0%</b>
<b>TOTAL PASSENGERS*</b>	<b>1,948,017</b>	<b>2,034,726</b>	<b>4.5%</b>	<b>19,466,909</b>	<b>20,395,458</b>	<b>4.8%</b>	<b>24,084,076</b>	<b>5.1%</b>
<b>INTERNATIONAL - ENPLANED</b>								
AIR CANADA	2,045	1,235	-39.6%	11,716	17,393	48.5%	18,730	59.9%
DELTA	22,225	23,425	5.4%	219,297	273,554	24.7%	315,954	29.1%
SkyWest (Delta Connection)	6,649	4,392	-33.9%	64,930	72,514	11.7%	83,964	12.7%
Compass	-	3,764	100.0%	11,059	7,419	-32.9%	7,492	-38.9%
KLM ROYAL DUTCH AIRLINES	2,483	2,099	-15.5%	13,431	19,955	48.6%	19,955	48.6%
Charters	-	-	0.0%	-	1	100.0%	1	-99.4%
<b>TOTAL ENPLANED INTERNATIONAL</b>	<b>33,402</b>	<b>34,915</b>	<b>4.5%</b>	<b>320,433</b>	<b>390,836</b>	<b>22.0%</b>	<b>446,096</b>	<b>25.0%</b>
<b>INTERNATIONAL - DEPLANED</b>								
AeroMexico	-	-	0.0%	5	-	-100.0%	-	-100.0%
AIR CANADA	2,090	1,130	-45.9%	12,185	16,789	37.8%	18,644	53.0%
DELTA	22,487	24,599	9.4%	221,521	278,118	25.5%	319,702	30.0%
SkyWest (Delta Connection)	6,536	4,254	-34.9%	70,256	70,908	0.9%	81,604	2.8%
Compass	-	3,892	100.0%	10,053	7,711	-23.3%	7,806	-30.6%
KLM ROYAL DUTCH AIRLINES	2,925	4,638	58.6%	15,864	39,726	150.4%	39,726	150.4%
Charters	-	-	0.0%	-	-	0.0%	-	-100.0%
<b>TOTAL DEPLANED INTERNATIONAL</b>	<b>34,038</b>	<b>38,513</b>	<b>13.1%</b>	<b>329,884</b>	<b>413,252</b>	<b>25.3%</b>	<b>467,482</b>	<b>28.1%</b>
<b>TOTAL INTERNATIONAL PASSENGERS</b>	<b>67,440</b>	<b>73,428</b>	<b>8.9%</b>	<b>650,317</b>	<b>804,088</b>	<b>23.6%</b>	<b>913,578</b>	<b>26.6%</b>

\*Includes International

**SALT LAKE CITY INTERNATIONAL AIRPORT**  
**TEN MONTHS ENDED OCTOBER 2017**  
Based on Total Enplanements

**MARKET SHARE**

	OCTOBER 2016	MARKET SHARE	OCTOBER 2017	MARKET SHARE	YTD 2016	MARKET SHARE	YTD 2017	MARKET SHARE	12 MO ROLLING Ending 10/2016	12 MO ROLLING Ending 10/2017	MARKET SHARE
AIR CANADA	2,045	0.21%	1,235	0.12%	11,716	0.12%	17,393	0.17%	11,716	18,730	0.16%
ALASKA	33,446	3.41%	29,507	2.88%	356,707	3.66%	339,965	3.33%	416,552	404,875	3.36%
AMERICAN	57,117	5.82%	59,427	5.81%	638,967	6.55%	648,440	6.35%	695,412	751,979	6.24%
DELTA	693,434	70.63%	728,819	71.21%	6,801,697	69.77%	7,135,303	69.87%	8,026,399	8,436,281	70.03%
FRONTIER	21,346	2.17%	15,967	1.56%	191,840	1.97%	192,842	1.89%	222,021	232,418	1.93%
JETBLUE	20,994	2.14%	28,439	2.78%	213,954	2.19%	271,635	2.66%	247,561	314,703	2.61%
KLM ROYAL DUTCH	2,483	0.25%	2,099	0.21%	13,431	0.14%	19,955	0.20%	13,431	19,955	0.17%
SOUTHWEST	104,975	10.69%	109,159	10.66%	1,040,613	10.68%	1,052,205	10.30%	1,219,994	1,238,952	10.29%
UNITED	45,105	4.59%	48,151	4.70%	474,613	4.87%	527,530	5.17%	561,540	619,934	5.15%
US AIRWAYS	-	0.00%	-	0.00%	-	0.00%	-	0.00%	42,571	-	0.00%
Charters	869	0.09%	728	0.07%	4,569	0.05%	6,513	0.06%	5,268	8,364	0.07%
<b>TOTAL ENPLANEMENTS</b>	<b>981,814</b>	<b>100%</b>	<b>1,023,531</b>	<b>100%</b>	<b>9,748,107</b>	<b>100%</b>	<b>10,211,781</b>	<b>100%</b>	<b>11,462,465</b>	<b>12,046,191</b>	<b>100%</b>

**PERCENT CHANGE YOY**

	OCTOBER 2016	OCTOBER 2017	PERCENT CHANGE	YTD 2016	YTD 2017	PERCENT CHANGE	12 MO ROLLING Ending 10/2016	12 MO ROLLING Ending 10/2017	PERCENT CHANGE
AIR CANADA	2,045	1,235	-39.61%	11,716	17,393	48.46%	11,716	18,730	59.87%
ALASKA	33,446	29,507	-11.78%	356,707	339,965	-4.69%	416,552	404,875	-2.80%
AMERICAN	57,117	59,427	4.04%	638,967	648,440	1.48%	695,412	751,979	8.13%
DELTA	693,434	728,819	5.10%	6,801,697	7,135,303	4.90%	8,026,399	8,436,281	5.11%
FRONTIER	21,346	15,967	-25.20%	191,840	192,842	0.52%	222,021	232,418	4.68%
JETBLUE	20,994	28,439	35.46%	213,954	271,635	26.96%	247,561	314,703	27.12%
KLM ROYAL DUTCH	2,483	2,099	-15.47%	13,431	19,955	48.57%	13,431	19,955	48.57%
SOUTHWEST	104,975	109,159	3.99%	1,040,613	1,052,205	1.11%	1,219,994	1,238,952	1.55%
UNITED	45,105	48,151	6.75%	474,613	527,530	11.15%	561,540	619,934	10.40%
US AIRWAYS	-	-	0.00%	-	-	0.00%	42,571	-	-100.00%
Charters	869	728	-16.23%	4,569	6,513	42.55%	5,268	8,364	58.77%
<b>TOTAL ENPLANEMENTS</b>	<b>981,814</b>	<b>1,023,531</b>	<b>4.2%</b>	<b>9,748,107</b>	<b>10,211,781</b>	<b>4.8%</b>	<b>11,462,465</b>	<b>12,046,191</b>	<b>5.1%</b>

**SALT LAKE CITY INTERNATIONAL AIRPORT  
LANDING ACTIVITY  
TEN MONTHS ENDED OCTOBER 2017**

	OCTOBER 2016	OCTOBER 2017	CHANGE	YTD 2016	YTD 2017	CHANGE	12 MO ROLLING Ending 10/2017	% CHANGE
<b>TOTAL NUMBER OF LANDINGS</b>								
<b>SCHEDULED CARRIERS</b>								
AEROMEXICO	-	-	0.0%	1	-	-100.0%	-	-100.0%
AIR CANADA	32	16	-50.0%	158	230	45.6%	263	66.5%
ALASKA	219	180	-17.8%	1,969	1,979	0.5%	2,397	3.0%
Horizon Air / Alaska	62	30	-51.6%	856	504	-41.1%	627	-39.5%
Skywest / Alaska	93	93	0.0%	1,207	995	-17.6%	1,174	-19.0%
AMERICAN	315	365	15.9%	3,803	3,868	1.7%	4,492	8.6%
Compass	58	31	-46.6%	725	524	-27.7%	643	-16.7%
American Eagle/Republic	-	-	0.0%	99	-	-100.0%	-	-100.0%
American/Mesa Air	-	-	0.0%	52	-	-100.0%	2	-96.6%
Envoy Air (American)	27	1	-96.3%	359	17	-95.3%	67	-84.3%
SkyWest (American)	149	101	-32.2%	784	1,360	73.5%	1,518	65.7%
DELTA	3,626	3,898	7.5%	34,811	38,973	12.0%	45,872	12.3%
SkyWest (Delta Connection)	3,472	3,167	-8.8%	34,933	32,197	-7.8%	38,960	-7.1%
Compass (Delta Connection)	34	174	411.8%	1,759	1,099	-37.5%	1,204	-42.2%
FRONTIER	146	110	-24.7%	1,363	1,143	-16.1%	1,389	-12.8%
JETBLUE	158	210	32.9%	1,510	2,046	35.5%	2,385	35.1%
KLM ROYAL DUTCH AIRLINES	13	12	-7.7%	69	93	34.8%	93	34.8%
SOUTHWEST	841	935	11.2%	8,135	9,300	14.3%	10,924	12.7%
UNITED	132	135	2.3%	1,439	1,854	28.8%	2,216	25.6%
Express Jet	-	-	0.0%	14	2	-85.7%	3	-82.4%
Mesa / United Express	-	33	100.0%	28	154	450.0%	173	440.6%
Republic Airways Holdings	52	23	-55.8%	179	538	200.6%	600	189.9%
SkyWest (United Express)	388	407	4.9%	4,103	3,668	-10.6%	4,355	-10.5%
Shuttle America (United Express)	-	-	0.0%	140	-	-100.0%	7	-95.7%
Trans States	-	-	0.0%	71	6	-91.5%	19	-73.2%
US AIRWAYS	-	-	0.0%	-	-	0.0%	-	-100.0%
<b>SUBTOTAL SCHEDULED CARRIERS:</b>	<b>9,817</b>	<b>9,921</b>	<b>1.1%</b>	<b>98,567</b>	<b>100,550</b>	<b>2.0%</b>	<b>119,383</b>	<b>2.2%</b>
<b>CHARTER CARRIERS</b>								
ALLEGIAN AIR	4	3	-25.0%	10	8	-20.0%	11	-8.3%
BIGHORN AIRWAYS	-	-	0.0%	3	-	-100.0%	-	-100.0%
BOMBARDIER BUSINESS JETS	17	8	-52.9%	182	202	11.0%	254	12.9%
BOUTIQUE AIR	136	97	-28.7%	913	1,133	24.1%	1,343	47.1%
D&D AVIATION	-	-	0.0%	56	-	-100.0%	-	-100.0%
DELTA PRIVATE JETS	14	16	14.3%	141	185	31.2%	220	32.5%
EXECUTIVE JET MANAGEMENT	8	4	-50.0%	86	105	22.1%	128	24.3%
FLIGHT OPTIONS	12	1	-91.7%	117	94	-19.7%	110	-23.6%
KEYLIME AIR	7	-	-100.0%	21	8	-61.9%	11	-60.7%
NETJETS	79	74	-6.3%	1,023	1,114	8.9%	1,325	9.2%
SIERRA PACIFIC	-	-	0.0%	7	8	14.3%	8	14.3%
SUNSET AVIATION	-	8	100.0%	22	51	131.8%	55	129.2%
SWIFT AIR	1	-	-100.0%	21	11	-47.6%	17	-32.0%
XOJET	14	10	-28.6%	153	159	3.9%	198	11.2%
OTHER CHARTER	50	72	44.0%	794	941	18.5%	1,114	19.4%
<b>SUBTOTAL CHARTER CARRIERS:</b>	<b>342</b>	<b>293</b>	<b>-14.3%</b>	<b>3,549</b>	<b>4,019</b>	<b>13.2%</b>	<b>4,794</b>	<b>18.6%</b>
<b>CARGO CARRIERS</b>								
ABX AIR (DHL)	-	-	0.0%	1	-	-100.0%	-	-100.0%
AERO CHARTER & TRANSPORT	21	22	4.8%	209	218	4.3%	261	4.0%
AIR TRANSPORT INTERNATIONAL	-	-	0.0%	1	6	500.0%	11	450.0%
AMERIFLIGHT	300	276	-8.0%	3,276	2,646	-19.2%	3,284	1303.4%
CORPORATE AIR (BILLINGS)	100	106	6.0%	1,059	1,092	3.1%	1,330	4.1%
EMPIRE	17	17	0.0%	171	167	-2.3%	201	-2.0%
FEDERAL EXPRESS	136	123	-9.6%	1,400	1,318	-5.9%	1,634	-6.6%
SOUTHERN AIR	45	43	-4.4%	465	435	-6.5%	528	-5.7%
UPS	97	116	19.6%	909	1,090	19.9%	1,356	16.0%
WESTERN AIR EXPRESS	45	14	-68.9%	345	290	-15.9%	368	-11.1%
OTHER CARGO	44	105	138.6%	282	930	229.8%	1,120	-72.2%
<b>SUBTOTAL CARGO CARRIERS:</b>	<b>805</b>	<b>822</b>	<b>2.1%</b>	<b>8,118</b>	<b>8,192</b>	<b>0.9%</b>	<b>10,093</b>	<b>1.9%</b>
<b>TOTAL LANDINGS</b>	<b>10,964</b>	<b>11,036</b>	<b>0.7%</b>	<b>110,234</b>	<b>112,761</b>	<b>2.3%</b>	<b>134,270</b>	<b>2.7%</b>
<b>TOTAL LANDED WEIGHT</b>								
<b>SCHEDULED CARRIERS</b>								
AEROMEXICO	-	-	0.0%	94,798	-	-100.0%	-	-100.0%
AIR CANADA	3,104,000	1,552,000	-50.0%	15,326,000	22,310,000	45.6%	25,511,000	66.5%
ALASKA	32,094,400	26,917,200	-16.1%	277,017,000	292,296,700	5.5%	353,767,700	9.0%
Horizon Air / Alaska	3,828,500	1,852,500	-51.6%	52,858,000	31,650,280	-40.1%	39,245,530	-38.7%
Skywest / Alaska	6,971,001	6,943,044	-0.4%	84,846,210	73,037,053	-13.9%	86,438,442	-14.6%
AMERICAN	45,973,600	53,244,360	15.8%	551,320,134	568,385,560	3.1%	658,142,160	10.3%
Compass	4,347,100	2,323,450	-46.6%	54,338,750	39,273,800	-27.7%	48,192,850	-16.7%
American Eagle/Republic	-	-	0.0%	7,420,050	-	-100.0%	-	-100.0%
Envoy Air (American)	1,816,900	67,000	-96.3%	24,035,120	1,266,200	-94.7%	4,835,320	-83.0%
American/Mesa Air	-	-	0.0%	3,822,000	-	-100.0%	147,000	-96.6%
SkyWest (American)	9,343,000	6,767,000	-27.6%	44,008,000	90,940,000	106.6%	101,406,000	102.0%



**SALT LAKE CITY INTERNATIONAL AIRPORT  
LANDING ACTIVITY  
TEN MONTHS ENDED OCTOBER 2017**

	OCTOBER 2016	OCTOBER 2017	CHANGE	YTD 2016	YTD 2017	CHANGE	12 MO ROLLING Ending 10/2017	% CHANGE
<b>DELTA</b>	558,677,960	585,213,856	4.7%	5,422,845,620	5,832,755,211	7.6%	6,896,549,435	8.4%
SkyWest (Delta Connection)	209,226,863	190,251,719	-9.1%	2,082,099,491	1,924,099,064	-7.6%	2,328,101,145	-7.0%
Compass (Delta Connection)	2,550,286	13,080,798	412.9%	131,683,205	82,527,811	-37.3%	90,395,602	-42.1%
<b>FRONTIER</b>	20,231,434	15,305,208	-24.3%	186,809,448	173,418,716	-7.2%	211,126,274	-3.2%
<b>JETBLUE</b>	22,467,600	29,862,000	32.9%	214,720,856	290,940,826	35.5%	339,146,626	35.1%
<b>KLM ROYAL DUTCH AIRLINES</b>	5,213,000	5,106,600	-2.0%	27,669,000	39,576,150	43.0%	39,576,150	43.0%
<b>SOUTHWEST</b>	111,280,000	122,260,400	9.9%	1,057,574,000	1,206,294,400	14.1%	1,415,468,400	13.0%
<b>UNITED</b>	19,186,400	19,825,320	3.3%	207,270,620	269,757,380	30.1%	321,429,280	27.1%
Express Jet	-	-	0.0%	648,196	88,184	-86.4%	132,276	-83.1%
Mesa / United Express	-	2,475,000	100.0%	2,100,000	11,550,000	450.0%	12,975,000	440.6%
Republic Airways Holdings	3,768,159	1,673,700	-55.6%	12,802,275	38,966,236	204.4%	43,451,853	198.7%
SkyWest (United Express)	26,715,787	28,510,508	6.7%	273,679,728	252,490,001	-7.7%	299,244,381	-6.9%
Shuttle America (United Express)	-	-	0.0%	10,123,680	-	-100.0%	506,184	-95.7%
Trans States	-	-	0.0%	3,033,387	273,600	-91.0%	846,900	-72.1%
<b>US AIRWAYS</b>	-	-	0.0%	-	-	0.0%	-	-100.0%
<b>SUBTOTAL SCHEDULED CARRIERS:</b>	<b>1,086,795,990</b>	<b>1,113,231,663</b>	<b>2.4%</b>	<b>10,748,145,568</b>	<b>11,241,897,172</b>	<b>4.6%</b>	<b>13,316,635,508</b>	<b>5.0%</b>
<b>CHARTER CARRIERS</b>								
<b>ALLEGIAN AIR</b>	792,000	418,500	-47.2%	1,746,000	1,116,000	-36.1%	1,710,000	-17.9%
<b>BIGHORN AIRWAYS</b>	-	-	0.0%	27,320	-	-100.0%	-	-100.0%
<b>BOUTIQUE AIR</b>	1,548,990	1,033,080	-33.3%	9,765,010	12,185,580	24.8%	14,509,130	48.6%
<b>D&amp;D AVIATION</b>	-	-	0.0%	840,650	-	-100.0%	-	-100.0%
<b>DELTA PRIVATE JETS</b>	369,750	486,300	31.5%	3,649,315	4,868,400	33.4%	5,837,950	39.8%
<b>EXECUTIVE JET MANAGEMENT</b>	354,300	175,500	-50.5%	3,941,485	5,076,499	28.8%	6,044,499	30.5%
<b>FLIGHT OPTIONS</b>	282,545	16,865	-94.0%	2,495,895	2,051,610	-17.8%	2,366,255	-25.2%
<b>KEYLIME AIR</b>	222,068	-	-100.0%	666,207	253,794	-61.9%	348,966	-60.7%
<b>NETJETS</b>	2,113,120	2,096,429	-0.8%	29,466,208	33,303,717	13.0%	39,605,970	14.5%
<b>SIERRA PACIFIC</b>	-	-	0.0%	743,000	855,000	15.1%	855,000	15.1%
<b>SUN COUNTRY</b>	-	146,300	100.0%	1,024,100	1,901,300	85.7%	2,486,200	142.8%
<b>SWIFT AIR</b>	121,000	-	-100.0%	2,541,000	929,925	-63.4%	1,655,925	-45.3%
<b>XOJET</b>	451,050	323,850	-28.2%	4,950,600	5,196,600	5.0%	6,462,150	12.2%
<b>OTHER CHARTER</b>	1,797,323	2,552,058	42.0%	25,916,478	34,922,892	34.8%	46,840,805	43.9%
<b>SUBTOTAL CHARTER CARRIERS:</b>	<b>8,052,146</b>	<b>7,248,882</b>	<b>-10.0%</b>	<b>87,773,268</b>	<b>102,661,317</b>	<b>17.0%</b>	<b>128,722,850</b>	<b>24.4%</b>
<b>CARGO CARRIERS</b>								
<b>ABX AIR (DHL)</b>	-	-	0.0%	320,000	-	-100.0%	-	-100.0%
<b>AERO CHARTER &amp; TRANSPORT</b>	143,850	150,700	4.8%	1,431,650	1,496,370	4.5%	1,790,920	4.2%
<b>AIR TRANSPORT INTERNATIONAL</b>	-	-	0.0%	18,000	112,500	525.0%	205,500	-31.7%
<b>ALPINE AVIATION</b>	338,100	951,900	181.5%	869,400	8,336,000	858.8%	9,463,000	988.5%
<b>AMERIFLIGHT</b>	3,938,794	3,866,968	-1.8%	42,911,294	37,630,150	-12.3%	46,599,180	-10.9%
<b>CORPORATE AIR (BILLINGS)</b>	850,000	901,000	6.0%	9,001,500	9,282,000	3.1%	11,305,000	4.1%
<b>EMPIRE</b>	614,635	614,635	0.0%	6,118,770	6,125,189	0.1%	7,474,502	1.7%
<b>FEDEX EXPRESS</b>	45,430,800	43,574,700	-4.1%	459,962,200	450,296,700	-2.1%	556,945,200	-3.3%
<b>SOUTHERN AIR INC</b>	5,526,172	5,237,788	-5.2%	56,981,255	52,808,940	-7.3%	64,064,839	-6.6%
<b>UPS</b>	28,883,600	33,413,280	15.7%	280,862,960	319,846,400	13.9%	404,549,680	11.4%
<b>WESTERN AIR EXPRESS</b>	574,000	168,400	-70.7%	4,451,700	3,640,700	-18.2%	4,638,600	-13.2%
<b>OTHER CARGO</b>	705,070	1,810,800	156.8%	2,883,627	13,303,574	361.3%	14,362,254	388.9%
<b>SUBTOTAL CARGO CARRIERS:</b>	<b>87,005,021</b>	<b>90,690,171</b>	<b>4.2%</b>	<b>865,812,356</b>	<b>902,878,523</b>	<b>4.3%</b>	<b>1,121,398,675</b>	<b>2.9%</b>
<b>TOTAL LANDINGS</b>	<b>1,181,987,157</b>	<b>1,211,170,716</b>	<b>2.5%</b>	<b>11,701,941,192</b>	<b>12,248,409,012</b>	<b>4.7%</b>	<b>14,567,729,033</b>	<b>5.0%</b>

**SALT LAKE CITY INTERNATIONAL AIRPORT  
CARGO ACTIVITY REPORT  
TEN MONTHS ENDED OCTOBER 2017**

	OCTOBER 2016	OCTOBER 2017	CHANGE	YTD 2016	YTD 2017	CHANGE	12 MO ROLLING Ending 10/2017	% CHANGE
<b>ENPLANED CARGO</b>								
<b>PASSENGER CARRIERS</b>								
ALASKA	16,298	22,759	39.64%	118,633	145,061	22.28%	155,447	16.44%
Horizon Air / Alaska	37	20	-45.95%	1,325	876	-33.89%	969	-36.08%
Skywest / Alaska	1,183	-	-100.00%	10,792	1,030	-90.46%	3,057	-76.43%
AMERICAN	44,272	49,065	10.83%	376,554	187,051	-50.33%	237,834	-50.72%
American Eagle/Republic	-	-	0.00%	273	-	-100.00%	-	-100.00%
Compass	-	-	0.00%	1	-	-100.00%	1	-99.95%
Envoy Air (American)	126	-	-100.00%	604	-	-100.00%	280	-78.59%
Mesa	-	-	0.00%	8	-	-100.00%	-	-100.00%
SkyWest (American)	200	-	-100.00%	2,311	479	-79.27%	610	-89.68%
DELTA	846,699	1,273,613	50.42%	7,331,645	10,907,136	48.77%	12,819,509	42.11%
KLM ROYAL DUTCH	90,721	72,839	-19.71%	346,267	400,078	15.54%	400,078	15.54%
SOUTHWEST	318,588	280,800	-11.86%	3,615,061	3,192,765	-11.68%	3,782,626	-13.42%
UNITED	27,650	9,610	-65.24%	96,977	49,755	-48.69%	62,317	-45.96%
US AIRWAYS	-	-	0.00%	-	-	0.00%	-	-100.00%
Others	-	-	0.00%	20,200	345	-98.29%	345	-98.29%
<b>CARGO CARRIERS</b>								
ABX AIR (DHL)	-	-	0.00%	16,001	-	-100.00%	-	-100.00%
FEDEX EXPRESS*	7,338,413	7,732,809	5.37%	76,207,561	74,855,377	-1.77%	90,838,001	-2.72%
GEM AIR	18,695	29,086	55.58%	153,241	320,082	108.87%	400,777	161.53%
SOUTHERN AIR	344,462	425,626	23.56%	3,635,393	3,715,626	2.21%	4,414,327	2.96%
UPS	3,541,772	4,192,546	18.37%	35,912,497	38,439,745	7.04%	47,994,897	6.93%
MISC CARGO	766,864	592,901	-22.68%	7,422,628	13,766,039	85.46%	15,408,577	68.70%
<b>TOTAL ENPLANED CARGO</b>	<b>13,355,980</b>	<b>14,681,674</b>	<b>9.93%</b>	<b>135,267,972</b>	<b>145,981,445</b>	<b>7.92%</b>	<b>176,519,652</b>	<b>6.09%</b>
<b>DEPLANED CARGO</b>								
<b>PASSENGER CARRIERS</b>								
ALASKA	21,483	31,771	47.89%	211,806	238,973	12.83%	280,843	15.87%
Horizon Air / Alaska	626	246	-60.70%	2,905	4,818	65.85%	5,729	55.01%
Skywest / Alaska	1,376	1,136	-17.44%	19,720	5,527	-71.97%	6,200	-73.49%
AMERICAN	31,128	56,935	82.91%	323,083	355,946	10.17%	429,360	15.43%
American Eagle/Republic	-	-	0.00%	1,570	-	-100.00%	-	-100.00%
Compass	-	-	0.00%	694	6,826	883.57%	6,826	883.57%
Envoy Air (American)	-	-	0.00%	72	-	-100.00%	151	-39.36%
SkyWest (American)	872	446	-48.85%	3,504	6,339	80.91%	6,858	95.72%
DELTA	1,303,799	1,623,032	24.48%	11,133,373	14,580,203	30.96%	17,692,180	31.46%
KLM ROYAL DUTCH	122,827	191,100	55.58%	491,488	894,108	81.92%	894,108	81.92%
SOUTHWEST	378,616	366,897	-3.10%	4,091,253	3,908,444	-4.47%	4,582,126	-6.84%
UNITED	27,052	10,383	-61.62%	260,124	268,631	3.27%	327,265	2.41%
US AIRWAYS	-	-	0.00%	-	-	0.00%	-	-100.00%
Others	-	-	0.00%	-	32,565	100.00%	44,176	100.00%
<b>CARGO CARRIERS</b>								
ABX AIR (DHL)	-	-	0.00%	1,069	-	-100.00%	-	-100.00%
FEDEX EXPRESS*	7,695,804	8,571,130	11.37%	76,786,932	82,186,445	7.03%	100,036,056	8.80%
GEM AIR	14,145	24,877	75.87%	137,693	178,421	29.58%	201,966	46.68%
SOUTHERN AIR	486,474	399,943	-17.79%	4,621,655	4,298,760	-6.99%	5,402,484	-5.08%
UPS	5,011,394	5,872,978	17.19%	49,780,306	55,189,371	10.87%	67,690,946	10.16%
MISC CARGO	395,546	253,629	-35.88%	3,757,407	3,119,268	-16.98%	3,984,282	-12.88%
<b>TOTAL DEPLANED CARGO</b>	<b>15,491,142</b>	<b>17,404,503</b>	<b>12.35%</b>	<b>151,624,654</b>	<b>165,274,645</b>	<b>9.00%</b>	<b>201,591,556</b>	<b>9.77%</b>
<b>TOTAL CARGO</b>	<b>28,847,122</b>	<b>32,086,177</b>	<b>11.23%</b>	<b>286,892,626</b>	<b>311,256,090</b>	<b>8.49%</b>	<b>378,111,208</b>	<b>8.02%</b>

\*FEDEX EXPRESS includes mail



Salt Lake City  
Department of Airports

**COMPARISON OF ON TIME OPERATIONS  
SEPTEMBER 2017**

**ARRIVALS**

Airport	Flights	% On Time	Rank
MSP MINNEAPOLIS-ST. PAUL INTL	11,211	91.1	1
<b>SLC SALT LAKE CITY INTL</b>	<b>9,025</b>	<b>90.4</b>	<b>2</b>
DEN DENVER INTL	18,836	88.7	3
DFW DALLAS-FT. WORTH REGIONAL	14,653	88.4	4
IAD WASHINGTON DULLES	3,059	88.0	5
CVG CINCINNATI NORTHERN INT. KY	1,730	87.8	6
DTW DETROIT METRO WAYNE CNTY	10,574	87.8	7
SEA SEATTLE-TACOMA INTL	11,941	87.3	8
ORD CHICAGO O HARE	22,835	86.7	9
ATL HARTSFIELD-JACKSON ATLANTA INTL	28,643	86.6	10
PHX PHOENIX SKY HARBOR INTL	11,549	86.4	11
BWI BALTIMORE/WASHINGTON INTL	8,232	86.0	12
PDX PORTLAND INTL	5,508	85.8	13
LAX LOS ANGELES INTL	17,450	85.6	14
CLT CHARLOTTE DOUGLAS	9,392	85.5	15
SAN SAN DIEGO LINDBERGH FIELD	6,990	85.2	16
STL ST. LOUIS LAMBERT INTL	4,648	85.1	17
MDW CHICAGO MIDWAY	7,174	84.6	18
LAS LAS VEGAS MCCARRAN INTL	12,698	84.4	19
DCA RONALD REAGAN NATIONAL	5,959	82.0	20
PHL PHILADELPHIA INTL	5,940	81.4	21
IAH HOUSTON GEORGE BUSH	9,793	81.2	22
LGA NEW YORK LAGUARDIA	7,515	79.5	23
JFK NEW YORK JFK INTL	7,513	77.8	24
SFO SAN FRANCISCO INTL	14,906	76.2	25
BOS BOSTON LOGAN INTL	10,357	74.4	26
MCO ORLANDO INTL	9,485	72.1	27
TPA TAMPA INTL	4,820	71.5	28
EWR NEWARK LIBERTY INTERNATIONAL	9,208	70.4	29
FLL FT. LAUDERDALE	6,522	68.4	30
MIA MIAMI INTL	4,929	65.9	31
<b>AVERAGES</b>	<b>10,100</b>	<b>82.3</b>	

**DEPARTURES**

Airport	Flights	% On Time	Rank
MSP MINNEAPOLIS-ST. PAUL INTL	11,204	90.9	1
<b>SLC SALT LAKE CITY INTL</b>	<b>9,025</b>	<b>89.7</b>	<b>2</b>
SEA SEATTLE-TACOMA INTL	11,931	88.9	3
IAD WASHINGTON DULLES	3,060	88.8	4
CVG CINCINNATI NORTHERN INT. KY	1,729	88.5	5
PDX PORTLAND INTERNATIONAL	5,509	88.3	6
DTW DETROIT METRO WAYNE CNTY	10,565	86.7	7
DEN DENVER INTERNATIONAL	18,831	86.6	8
PHX PHOENIX SKY HARBOR INTL	11,556	86.5	9
DFW DALLAS-FT. WORTH REGIONAL	14,649	86.1	10
SAN SAN DIEGO LINDBERGH FIELD	6,987	85.7	11
CLT CHARLOTTE DOUGLAS	9,395	85.5	12
LAX LOS ANGELES INTL	17,436	85.2	13
ORD CHICAGO O HARE	22,844	84.8	14
STL ST. LOUIS LAMBERT INTL	4,655	84.7	15
ATL HARTSFIELD-JACKSON ATLANTA INTL	28,641	84.3	16
BWI BALTIMORE/WASHINGTON INTL	8,233	83.9	17
DCA RONALD REAGAN NATIONAL	5,961	83.2	18
PHL PHILADELPHIA INTL	5,935	82.9	19
LAS LAS VEGAS MCCARRAN INTL	12,686	81.8	20
IAH HOUSTON GEORGE BUSH	9,792	81.3	21
LGA NEW YORK LAGUARDIA	7,510	81.3	22
JFK NEW YORK JFK INTL	7,513	80.2	23
BOS BOSTON LOGAN INTERNATIONAL	10,365	80.1	24
MDW CHICAGO MIDWAY	7,177	79.7	25
SFO SAN FRANCISCO INTL	14,902	79.7	26
EWR NEWARK LIBERTY INTERNATIONAL	9,211	77.8	27
TPA TAMPA INTERNATIONAL	4,827	72.6	28
MCO ORLANDO INTL	9,483	71.5	29
FLL FT. LAUDERDALE	6,524	67.7	30
MIA MIAMI INTL	4,923	63.9	31
<b>AVERAGES</b>	<b>10,099</b>	<b>82.5</b>	

**ON TIME ARRIVAL PERFORMANCE AT SLC**

By Carrier

Air Carrier	Flights	% On Time
DL DELTA	3,623	93.2%
AA AMERICAN	343	91.5%
F9 FRONTIER	104	91.3%
OO SKYWEST	3,524	90.3%
UA UNITED	142	89.4%
WN SOUTHWEST	926	85.1%
AS ALASKA	169	81.7%
B6 JETBLUE	193	71.5%
<b>AVERAGES</b>	<b>9,025</b>	<b>90.4%</b>

Source: DOT Air Travel Consumer Report - Issued November 16, 2017

# **DESIGN AND CONSTRUCTION REPORT**

## TABLE OF CONTENTS

- I. Area Map of Project Locations
- II. Project Schedule
- III. Construction Analysis
- IV. Design and Construction Report



Salt Lake City  
International Airport

### 2017 - 2018 Project Legend

#### Airfield

1. R/W 17-35 and T/W P & R Pavement Rehabilitation
2. R/W 14-32 Pavement Rehabilitation
3. Asphalt Overlay Program Phase 11
4. North Support Improvements/ Vehicle Gate 22
5. Airfield Signage Replacement
6. PCC Joint Seal Phase 2

#### Landside

7. East Apron Pavement Rehabilitation Phase 1
8. 2100 North 4000 West Asphalt Overlay
9. Airport Operations Center
10. Fiber Run 2200 W and 2200 N to North Vault
11. Electric Vehicle Charging Stations

#### Terminal

12. Roof Replacements, Lower Concourse B
13. Passenger Boarding Bridge Replacement (C2, D5 and D7)
14. Carpet Replacement - Concourse A, B, & TU3



SALT LAKE CITY INTERNATIONAL AIRPORT  
CONSTRUCTION PROGRAM  
2016/2017 Construction Schedule

ID	Task Name	Start	Finish												
				Jun '17	Jul '17	Aug '17	Sep '17	Oct '17	Nov '17	Dec '17	Jan '18	Feb '18	Mar '18	Apr '18	
<b>1</b>	<b>Airfield</b>	<b>Mon 8/1/16</b>	<b>Thu 9/13/18</b>												
2	(1) R/W 17-35 & T/W's P & R Pavement Rehabilitation	Mon 8/1/16	Mon 7/31/17												
3	(2) R/W 14-32 Pavement Rehabilitation	Mon 7/10/17	Tue 10/31/17												
4	(3) Asphalt Overlay Program Phase 11	Wed 7/5/17	Wed 10/18/17												
5	(4) North Support Improvements/Vehicle Gate 22	Mon 8/7/17	Fri 11/17/17												
6	(5) Airfield Signage Replacement	Tue 8/1/17	Thu 9/13/18												
7	(6) PCC Joint Seal Program Phase 2	Tue 9/26/17	Sat 11/18/17												
<b>8</b>	<b>Landside</b>	<b>Sun 11/8/15</b>	<b>Tue 7/24/18</b>												
9	(7) East Apron Pavement Rehabilitation Phase 1	Sun 11/8/15	Tue 10/24/17												
10	(8) 2100 North 4000 West Asphalt Overlay	Mon 5/15/17	Tue 10/31/17												
11	(9) Airport Operations Center	Wed 6/1/16	Thu 11/30/17												
12	(10) Fiber Run 2200 West and 2200 North to North Vault	Mon 8/14/17	Tue 7/24/18												
13	(11) Electric Vehicle Charging Stations	Fri 9/22/17	Sat 2/10/18												
<b>14</b>	<b>Terninal</b>	<b>Thu 6/8/17</b>	<b>Mon 3/5/18</b>												
15	(12) Lower Concourse B Roof Replacement	Mon 6/26/17	Mon 10/16/17												
16	(13) Passenger Boarding Bridge Replacement (C2, D5, and D7)	Thu 6/8/17	Mon 11/20/17												
17	(14) Carpet Replacement - Concours A, B, and TU3	Wed 12/6/17	Mon 3/5/18												

Date: Mon 12/4/17	Design		Inactive Milestone		Manual Summary	
	CONSTRUCTION		Inactive Summary		Start-only	
	SCOPING		Manual Task		Finish-only	
	SUMMARY		Duration-only		Deadline	
	Inactive Task		Manual Summary Rollup			

**SALT LAKE CITY DEPARTMENT OF AIRPORTS  
CONSTRUCTION PROJECT STATUS 2017 - 2018**

#	PROJECT NAME	ENGINEER'S ESTIMATE	BID AMOUNT	APPROVED CHANGE ORDERS TO DATE	% OF COST INCREASE TO DATE	STATUS	CONTRACTOR
<b>CONSTRUCTION</b>							
1	R/W 17-35 & T/W's P & R Pavement Rehabilitation	\$ 11,525,000	\$ 9,871,843	\$ 121,656	1.23%	on schedule	Staker Parson Companies
2	Runway 14-32 Pavement Rehabilitation	\$ 3,696,205	\$ 3,852,800			on schedule	Granite Construction Company
3	Asphalt Overlay Program Phase 11	\$ 643,646	\$ 615,296	\$ 8,109	1.32%	complete	Staker Parson Companies
4	North Support Improvements/Vehicle Gate 22	\$ 618,159	\$ 749,950			complete	Staker Parson Companies
5	Airfield Signage Replacement	\$ 3,916,511	\$ 1,844,679			on schedule	Skyline Electric Company
6	PCC Joint Seal Program Phase 2 (T/W's G & H)	\$ 399,825	\$ 427,660			complete	Granite Construcion
7	East Apron Pavement Rehabilitation - Phase 1	\$ 2,935,225	\$ 2,966,485	\$ 987	0.03%	complete	Granite Construction Company
8	2100 North & 4000 West Asphalt Overlay	\$ 2,130,518	\$ 1,654,941	\$ 211,194	12.76%	complete	Staker Parson Companies
9	Airport Operations Center	\$ 15,000,000	\$ 16,515,000	\$ 945,176	5.72%	on schedule	Big D Construcion
10	Fiber Run 2200 West and 2200 North to North Vault	\$ 1,960,273	\$ 1,797,585			on schedule	Americom Technology, Inc.
11	Electric Vehicle Charging Stations	\$ 275,220	\$ 305,913			on schedule	Paulsen Constrution
12	Lower Concourse B Roof Replacement	\$ 264,000	\$ 269,847			complete	Conwest Inc.
13	Passenger Boarding Bridge Replacement (C2, D5, and D7)	\$ 2,553,000	\$ 2,041,468			complete	JBT AeroTech
	<b>Sub Total</b>	<b>\$ 45,917,582</b>	<b>\$ 42,913,467</b>	<b>\$ 1,287,122</b>	<b>3.00%</b>		
<b>DESIGN/BID/AWARD</b>							
14	Carpet Replacement - Concourses A, B, and TU3	\$ 595,000	\$ 614,200			award	Webb Brothers
	<b>Sub Total</b>	<b>\$ 595,000</b>	<b>\$ 614,200</b>				
	<b>Total</b>	<b>\$ 46,512,582</b>	<b>\$ 43,527,667</b>				
Budget amount, Engineer's estimate, and Bid amount is based on construction cost only.							

## DESIGN AND CONSTRUCTION REPORT

### DESIGN/BID/AWARD

- (14) **Carpet Replacement – Concourses A, B, and TU3** - This project will replace the existing carpet in multiple locations throughout Concourses A, B and TU-3. The apparent low bidder is Webb Brothers Construction. Contract documents are currently being prepared.

### CONSTRUCTION

- (1) **Runway 17-35 and Taxiways P & R Pavement Rehabilitation** - The Contractor is currently replacing lights on R/W 17-35. A winter shut-down is anticipated for December 15, 2017.
- (2) **Runway 14-32 Pavement Rehabilitation** - All asphalt paving work for this project has been completed. Remaining work includes installation of in-pavement lights.
- (3) **Asphalt Overlay Program Phase 11** - Substantial completion for this project was issued on October 18, 2017. The Contractor is currently working on punch list items.
- (4) **North Support Improvements/Vehicle Gate 22** - Substantial completion for this project was issued on November 17, 2017. The Contractor is currently working on punch list items.
- (5) **Airfield Signage Replacement** - This project will go into winter shut-down on December 15, 2017. Work will resume again in the spring of 2018.
- (6) **PCC Joint Seal Program Phase 2 (T/W G & H)** - Substantial completion for this project was issued to the Contractor on November 18, 2017. All punch list items have been completed.
- (7) **East Apron Pavement Rehabilitation Phase 1** - Substantial completion for this project was issued on October 24, 2017. The Contractor is currently working on punch list items.
- (8) **2100 North 4000 West Asphalt Overlay** - The Contractor was issued substantial completion for this project on October 31, 2017. All punch list items have been completed.
- (9) **Airport Operations Center** - This project is nearing completion. The Contractor is working on punch list items. Mechanical and electrical equipment testing and commissioning is being finalized. Communications work has been completed and server equipment is being tested to verify functionality.
- (10) **Fiber Run 2200 West and 2200 North to North Vault** - The Contractor is continuing to install the communications and electrical duct banks on Phase 1 of the project. They have completed the duct bank north of 2200 North and are now approximately 50% complete with the new duct bank located inside the secured area.
- (11) **Electric Vehicle Charging Stations** - The electrical trench and exterior conduit/wire at the Long-Term and Employee Parking Lots are completed. Asphalt placement will begin when weather allows. The demolition for the Parking Structure work started on December 4, 2017.
- (12) **Lower Concourse B Roof Replacement** - The Contractor was issued substantial completion for this project on October 16, 2017. All punch list items have been completed.
- (13) **Passenger Boarding Bridge Replacement (C2, D5, and D7)** - The Contractor was issued substantial completion for this project on November 20, 2017. All punch list items have been completed.





**December 2017  
Media Clippings**

**Advisory Board Meeting**

<https://slairport.com/assets/pdfDocuments/AABoard/MediaClippingsDec2017.pdf>

**Compiled by P.R. & Marketing Dept.**