

DEPARTMENT OF AIRPORTS  
BOARD MEETING

18 November 2015

AGENDA



Salt Lake City  
Department of Airports

**SALT LAKE CITY DEPARTMENT OF AIRPORTS  
BOARD MEETING AGENDA**  
18 November 2015  
8:00 A.M.

CONSENT AGENDA

- A. Minutes of the 21 October 2015 Meeting

DISCUSSION AGENDA

- B. Director's Report – Maureen Riley, Executive Director, SLCDA  
C. Terminal Redevelopment Program Update – Mike Williams,  
Terminal Redevelopment Program (TRP) Director, SLCDA  
D. Year-End Audit – Ryan Tesch, Director of Finance, SLCDA  
E. Preview of the New SLCDA Website – Bianca Shreeve, Public  
Relations and Media Manager, SLCDA  
F. Nominations for Board Chair and Vice-Chair

INFORMATION ITEMS

- A. Financial Report – September 2015  
B. Air Traffic Statistics – September 2015  
C. Comparison of On-Time Operations – August 2015  
D. Construction Status Report – October 2015

The next meeting will be held on **Wednesday, January 20, 2016**, at 8:00 a.m. Meetings are held in the Board Room located on the third level of the short-term parking garage. People with disabilities may make requests for reasonable accommodations no later than 48 hours in advance in order to attend this Airport Board Meeting. Accommodations may include alternate formats, interpreters, and other auxiliary aids. This is an accessible facility. For questions or additional information, please contact LuJean Christensen at 801-575-2096.

DEPARTMENT OF AIRPORTS  
BOARD MEETING

18 November 2015

MINUTES

# SALT LAKE CITY DEPARTMENT OF AIRPORTS MINUTES OF ADVISORY BOARD MEETING

21 October - 2015

Members Present: Mickey Gallivan – Chair  
Igor Best-Devereux  
Christine Botosan  
J.T. Martin  
Larry Pinnock  
Mike Zuhl

Excused: David Ibarra  
Natalie Gochnour  
Wayne Holland

Mayor's Office: David Everitt

Department of Airports: Maureen Riley, Executive Director  
Larry Bowers, Operations  
John Buckner, Director of Administration & Commercial Services  
Ed Cherry, Chief Information Officer  
LuJean Christensen, Management Support Coordinator  
Pete Higgins, Director of Maintenance  
Dave Korzep, Operations  
Marco Kunz, Attorney  
Allen McCandless, Director of Planning  
Kevin Robins, Director of Engineering  
Ryan Tesch, Director of Finance  
Craig Vargo, Police Chief  
Mike Williams, TRP Program Director

Chair Mickey Gallivan called the meeting to order at 8:00 a.m.

## AGENDA

### A. Minutes

The motion was made by Larry Pinnock and seconded by J.T. Martin to approve the minutes of August 5, 2015 as presented and June 17, 2015 with the addition of excused members to include Igor Best-Devereux, Wayne Holland and Christine Botosan on the June 17, 2015 minutes. All votes were affirmative; motion passed.

### B. Director's Report



Maureen Riley, Executive Director, updated the Airport Advisory Board regarding current events.

- Riley expressed appreciation to Mickey Gallivan for his participation as master of ceremonies during the Mayor's TRP announcement. The announcement was well received and the press has been positive.
- Riley announced that over the last 12 months, total passengers increased by just over one million passengers which equates to a 5.2% increase.
- Riley informed the Board that the restrooms in lower B Concourse are being remodeled.
- Riley apprised the Board that the year-end financial statements will be presented in the November meeting. There has been a delay with all municipalities and governmental agencies in receiving the Utah Retirement System audited year-end report which impacts the Airport's financial results.
- The Airport received the first activity report from Uber which uses an honor system to disclose how many trips were made at the Airport. The first day showed there were 250 trips reported.
- The drive through lane in the parking garage closed October 1<sup>st</sup>. The Airport is currently in the process of installing the premier reserved parking stalls on the inner curb of level one for premier parking.
- Riley informed the Board that there will be a few scheduling conflicts next year and adjustments to the Board meetings will need to be made because of her being Chair of Airport Council International North America (ACI-NA).

Christine Botosan wondered what the nature of the delay was in finalizing the year-end financial statements. Ryan Tesch answered that GASB #68 revises the standards of financial reporting for pension plans and has impacted receiving the final audited report from the Utah Retirement System.

Larry Pinnock raised the question on how the premier parking will be accessed. Riley stated that a booth would be located at the entrance of premier parking and an employee of SP+ Parking would monitor access.

Mike Zuhl wondered what the daily fee would be for the premier parking stalls. Riley stated that the daily fee for premier parking would be \$50.

Gallivan inquired if Delta would continue operating the baggage drop off in the parking garage. Riley responded that currently Delta would continue to operate the baggage drop off and evaluate the service.

J.T. Martin inquired how UEA break impacted the TSA screening lines. Riley responded that the queue at the TSA screening lines will ebb and flow according to peak periods even during UEA break.

Gallivan wanted to recognize and express congratulations to Riley as the new chair of ACI-NA.

### **C. Terminal Redevelopment Program Update**

Mike Williams, Terminal Redevelopment Program (TRP) Director, presented an update on the TRP (presentation on file). Main points included were:

- Landside arrival and departure lanes.
- The Level 2 parking deck.
- Gateway Center showing the pedestrian walkway portal.
- Ticketing area in the terminal on Level 3.
- A view of “The Canyon” adjacent to the meter greeter area and at the security checkpoint.
- The plaza area and a cross section through the entire facility.
- The QTA and RSS site including updates on the RSS exterior and interior finishes and the QTA interior and exterior construction.

Pinnock wondered if the current world map would be reproduced in the new facility. Williams stated that the current world map would be professionally photographed and recorded. Riley stated that the Airport has had two structural engineers evaluate whether the world map could be moved and the engineers determined that the map could not be moved. The Airport is currently working with a commissioned artist in creating a plan to memorialize the map.

Botosan wondered who is responsible for designing the traffic flow pattern in the immigration area. Williams responded that it is an integrated effort between the Airport and Custom and Border Protection (CBP).

Pinnock inquired if individuals parking in long term parking would still be able to walk to the terminal now that construction is underway. Williams responded that there is not a safe path to walk through the construction area.

#### **D. Fixed Base Operators (FBOs) Status Update**

John Buckner, Director of Commercial and Administration, presented a status update to the Board on FBOs (presentation on file). Main points included were:

- TAC Air and Atlantic Aviation map location.
- FBO request for proposals were due 11/21/2014. Five proposals were received and 3 proposals were selected for interviews.
- Committee selected Atlantic Aviation and executed a lease effective 9/15/2015.
- Atlantic Aviation will invest \$25.5 million in improvements over the next five years.
- The term of the agreement is for 27 years.

Buckner introduced Tim Johnson, Vice President of Business Development, with Atlantic Aviation. Johnson presented an update on the present Atlantic Aviation, Atlantic’s Salt Lake City facility re-development, phasing and site plans (presentation on file). Main points included were:

- Atlantic Aviation location overview.
- Proposed business plan for Salt Lake City.

- Facility and ramp renovation and new fuel farm.
- Atlantic Aviation master plan.
- New FBO executive terminal and hangars.

Gallivan welcomed Atlantic Aviation to the Airport.

David Everitt wondered what the standards of sustainability were for the design of the new facilities. Johnson replied that currently several of the facilities throughout the company are LEED certified and they are looking at applying those standards here on the terminal.

Botosan inquired about the financing plan for the investment in improvements, and Johnson answered that all investments are financed internally.

Igor Best-Devereux wondered what the expected volume of traffic would be. Johnson stated that Atlantic Aviation expected an increase in volume based on the growth in the Salt Lake market.

Mike Zuhl at 9:00 am excused himself from the meeting.

#### **E. Public Meetings Training – Marco Kunz, Attorney, Salt Lake City Department of Airports (SLCDA)**

Marco Kunz presented the annual Utah Open and Public Meetings Training that is required (presentation on file). The following points were emphasized:

- Notice of meetings annual schedule, and posting requirements.
- Records of open meetings both written minutes and a recording are required.
- Many situations are fact specific. If issues arise, please contact Kunz or someone at the City Attorney's office for specific advice.
- All communications – emails, letters, etc. – are subject to GRAMA requests.
- GRAMA is all inclusive and extensive.

#### **F. Airport Master Plan**

Allen McCandless, Director of Planning and Environmental, presented a briefing on the requirements related to the Airport master plan, the various phases and steps involved (presentation on file). Main points included were:

- Function of an airport master plan.
- Objectives of an airport master plan.
- Required FAA approval.
- Elements of an airport master plan.
- Key planning issues for the Airport.
- Airport master planning to include runways and taxiways, future concourse expansion, cargo facilities, support facilities, general aviation, golf course and land use.

Pinnock questioned how many years down the road would future terminals be considered. McCandless answered that currently that has not been determined. It is based on growth in the region in employment and population.

Best-Devereux inquired to the probability of needing a new runway, McCandless answered that for the runway and taxiway systems the need would be determined by delays, for example, after an aircraft pushes away from the gate, how long until the aircraft is in the air. Riley stated that it is based on the forecast and layout plan. The FAA wants to see what assumptions have been made and what it will look like when it is built out.

Pinnock inquired if there is a need to upgrade the runways to be able to handle heavier aircraft such as the Airbus 380. Riley replied that currently the market demographics would not sustain that size of aircraft.

### **G. Ground Transportation Update**

Larry Bowers, Airport Operations Manager, presented an update on Ground Transportation (presentation on file). Main points included were:

- Ground transportation history
- Setting maximum fares
- Salt Lake City zones 1 and 2 boundaries
- Mystery shopping data for the last six months
- Airport transportation network company (TNC) permit process
- City Council recommendations

Gallivan excused himself from the meeting at 9:54 am.

Botosan inquired if in the survey and data collection process be collected on rates and if there is discrimination to at-risk populations. Bowers replied that could be included in the data collection process.

Pinnock questioned how the queue for pick up for Uber and Lyft are managed. Bowers stated that Uber and Lyft operate under a permit. The permit requires that they stage off Airport. The on-demand transportation provider's stage off airport but the Airport provides a 25 stall staging area, on Airport, to feed our terminal front locations.

Best-Devereux encouraged increasing signage to encourage using TRAX. Riley stated that currently we are looking into that and have encouraged UTA to advertise more.

The next Board meeting will be held the 18 November 2015.

Igor Best-Devereux closed the meeting at 10:02 a.m.

---

Mickey Gallivan, Chair

---

Date

---

Ralph Becker, Mayor

---

Date

DEPARTMENT OF AIRPORTS  
BOARD MEETING

18 November 2015

DISCUSSION ITEMS

## SALT LAKE CITY AIRPORT BOARD

**AGENDA:** DISCUSSION ITEM (B)  
**DATE:** 18 November 2015  
**TO:** Airport Board  
**FROM:** Maureen Riley, Executive Director  
**SUBJECT:** **Executive Director's Report**

---

Maureen Riley will present a monthly informational report to the Board, including:

1. TRP progress
2. Ground transportation update

Other discussion items may include:

1. Concessions and rental cars
2. Airport safety and security
3. Airport facilities and operations
4. General aviation
5. Passenger and airport users
6. Environmental matters
7. Financial condition
8. Legislative issues
9. Airlines
10. Communications and marketing

## SALT LAKE CITY AIRPORT BOARD

**AGENDA:** DISCUSSION ITEM (C)  
**DATE:** 18 November 2015  
**TO:** Airport Board  
**FROM:** Maureen Riley, Executive Director  
**SUBJECT:** **Terminal Redevelopment Program Update**

---

Mike Williams, Terminal Redevelopment Program (TRP) Director, will present an update on the SLC Terminal Redevelopment Program (presentation on file).



# SLC Terminal Redevelopment Program





# Current and Near Term Phasing East Lift Station



**Salt Lake City International Airport  
Terminal Redevelopment Program**

October 30, 2015



Salt Lake City International Airport



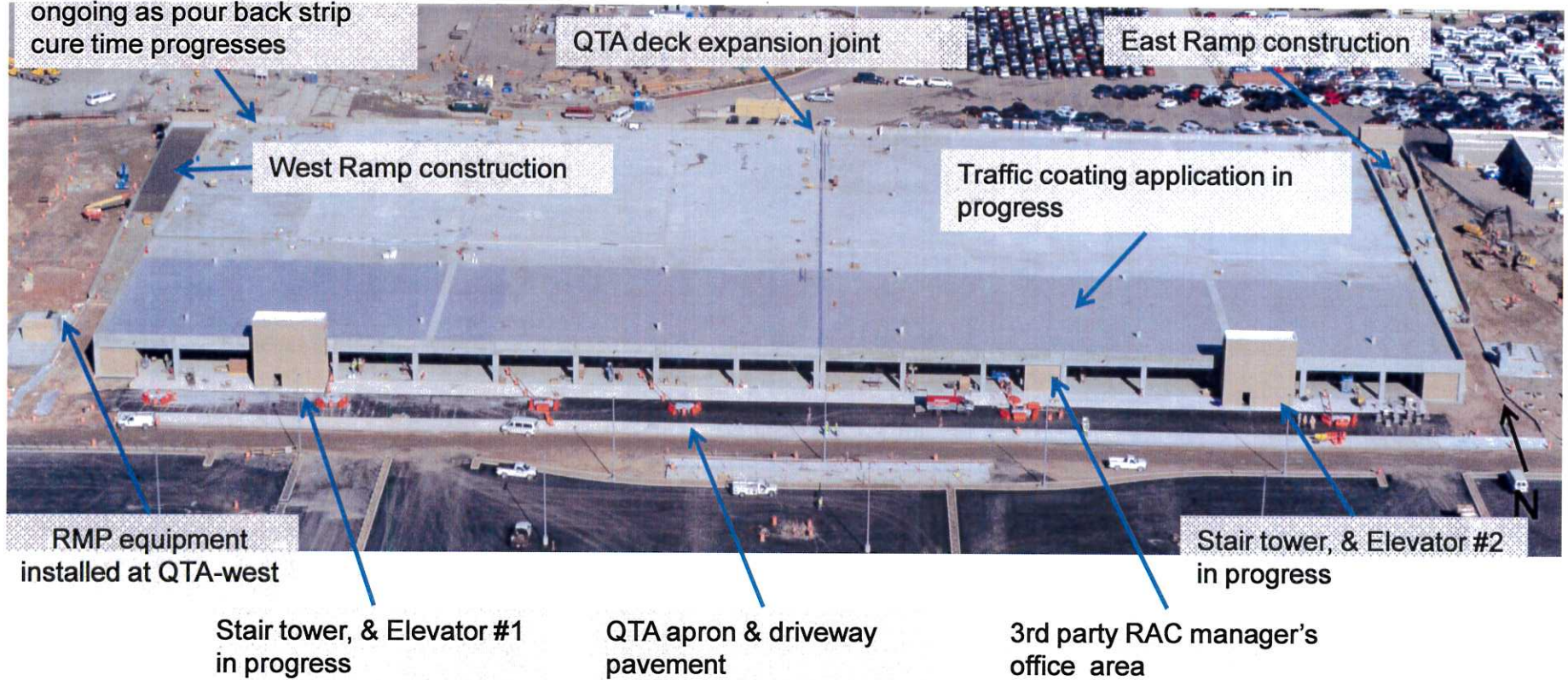
# Job Progress Photos

Completed Scope: QTA ramp pours, Stair 'A' masonry, Admin Area masonry, metal wall framing, exterior wall foam insulation,

Ongoing: Elevated deck barrier walls, ramp barrier walls; deck traffic coating at pour back strips, QTA/RSS loop roadway, HVAC and ventilation ductwork, under-deck MEP and fire protection, med. voltage power equipment, elevator installation, stairs, car washes, vacuum system, washer fluid and compressed air systems, painting, lighting.

## QTA

Deck parapet barrier walls, ongoing as pour back strip cure time progresses



## QTA Site



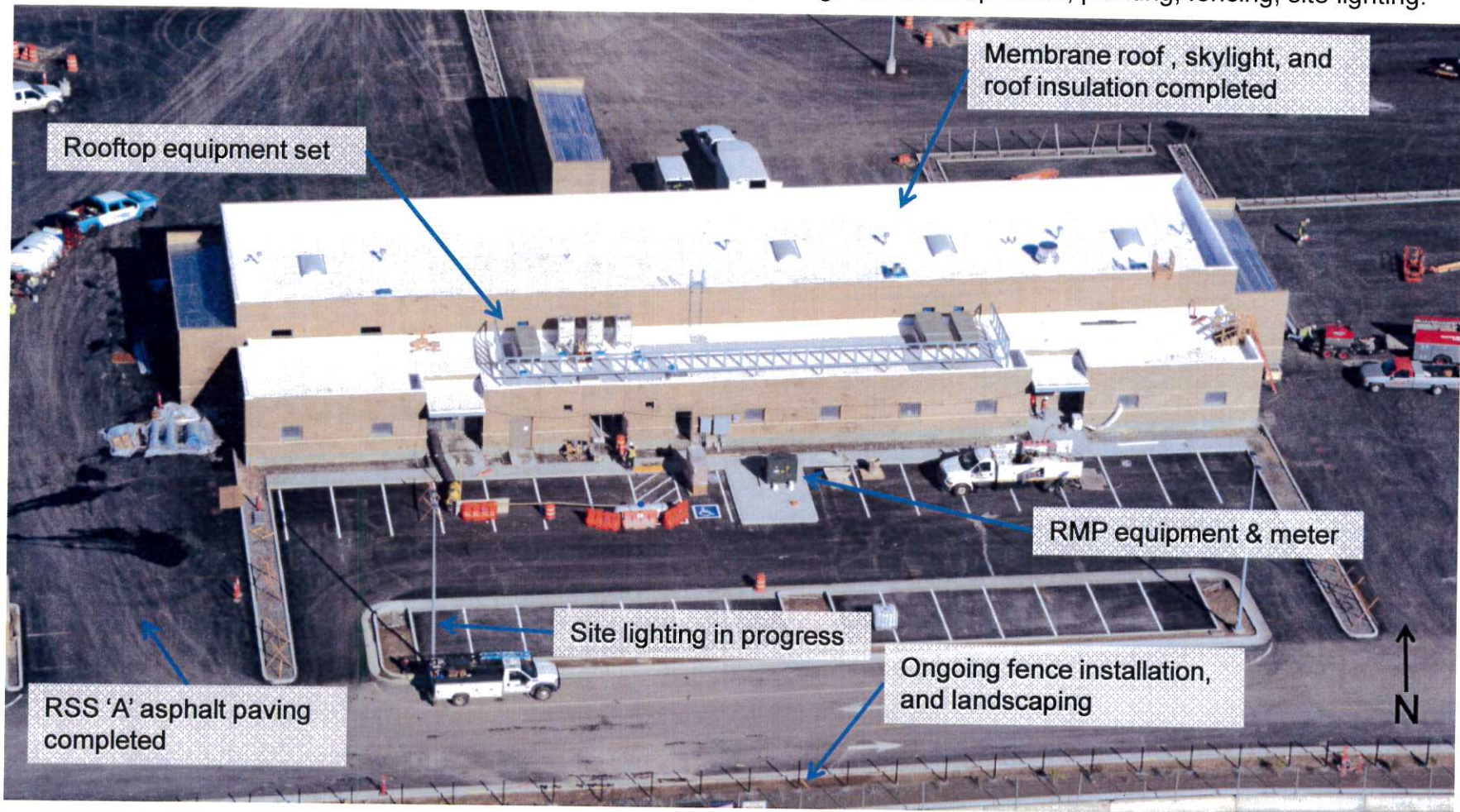


# Job Progress Photos

Completed Scope: Roofing, metal wall framing, sheetrock, insulation, paving, and work bay roll-up doors.

## RSS "A"

Ongoing: MEP rough-in, restroom rough-in, FP, taping and finishing sheetrock, storage shed roll-up doors, painting, fencing, site lighting.



RSS "A" Site

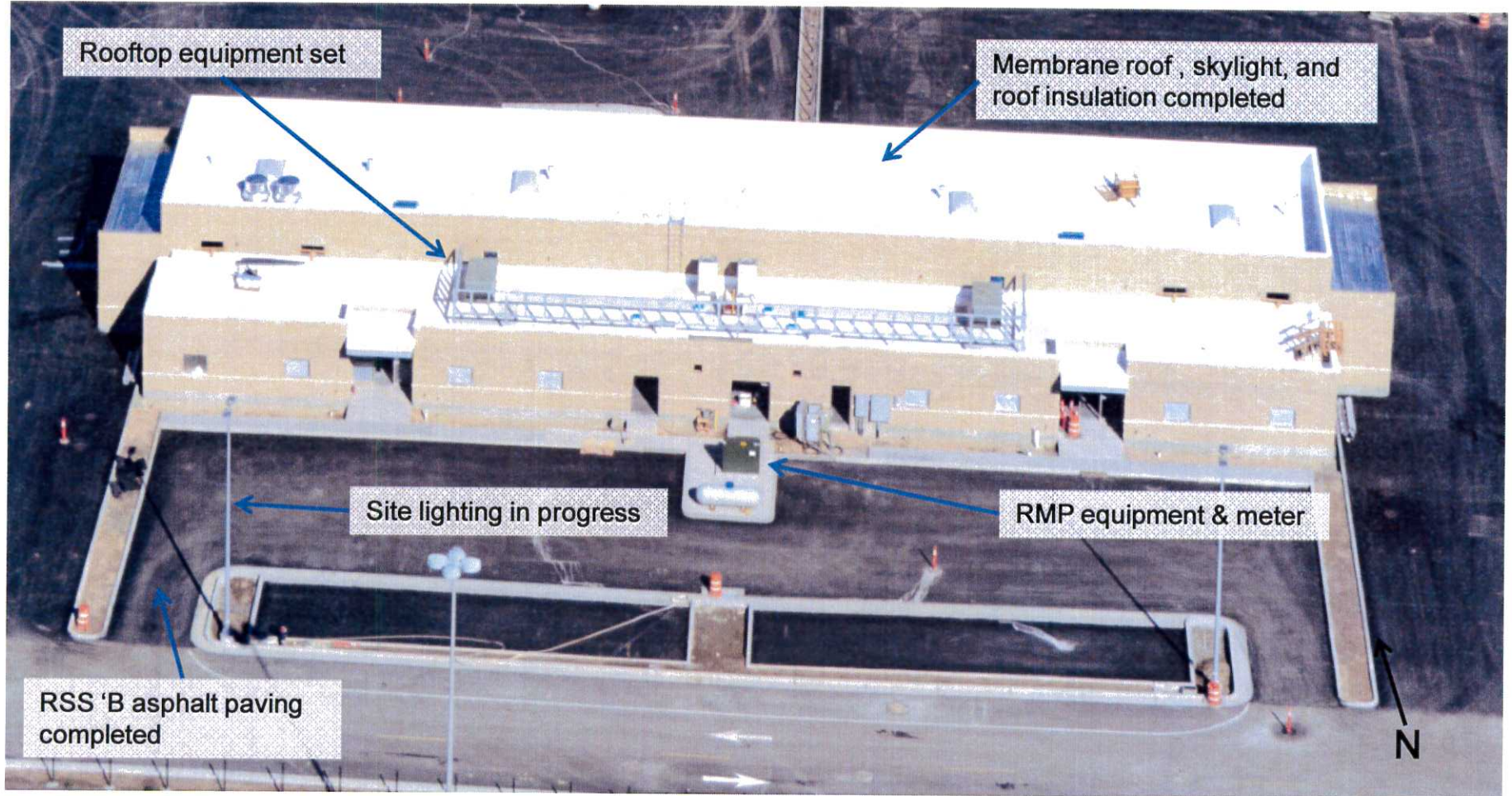


# Job Progress Photos

Completed Scope: Roofing, metal wall framing, insulation, paving, and work bay roll-up doors.

## RSS "B"

Ongoing: MEP rough-in, restroom rough-in, FP, sheetrock, storage shed roll-up doors, painting, fencing and site lighting.



RSS "B" Site



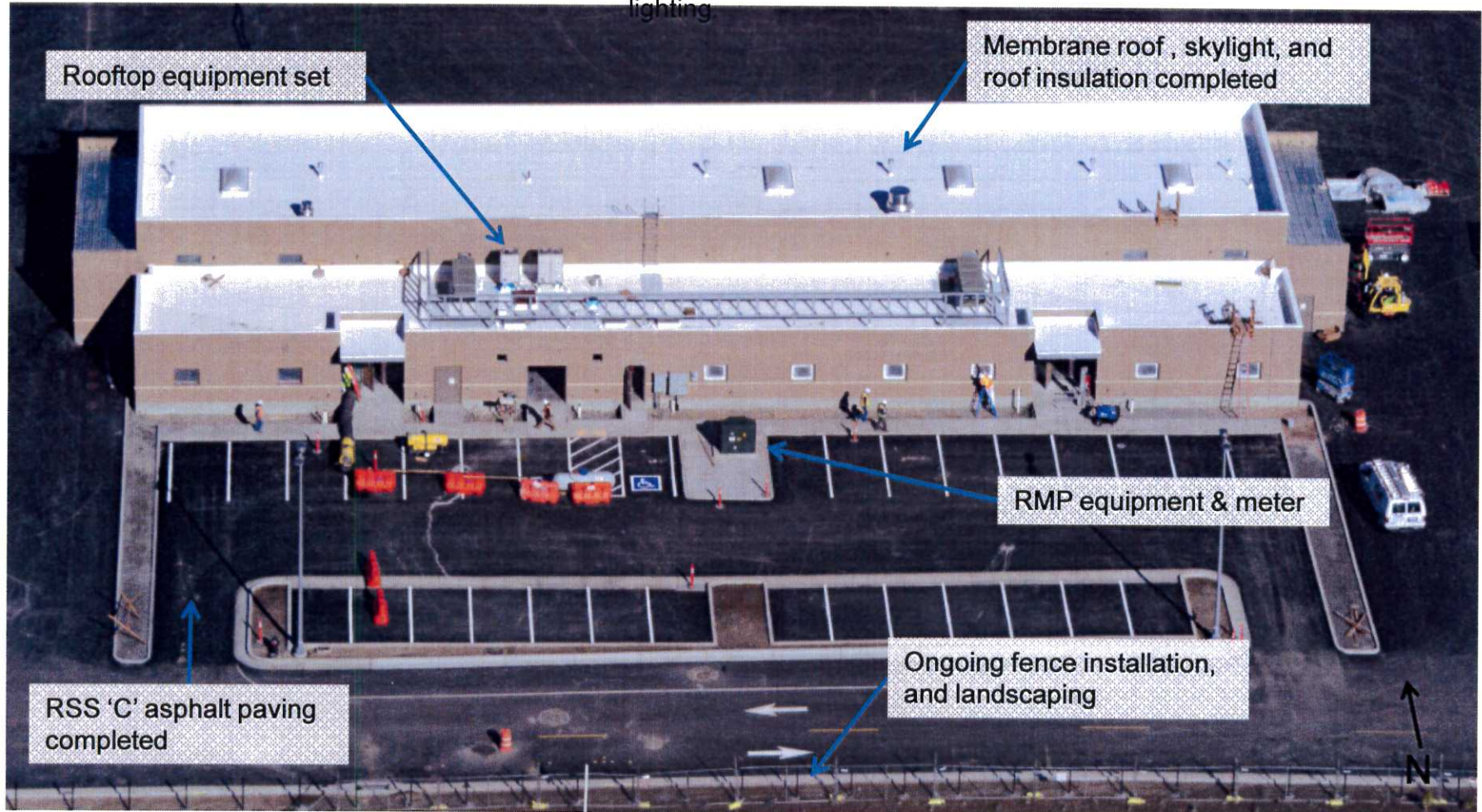


# Job Progress Photos

Completed Scope: Roofing, metal wall framing, insulation, sheetrock, paving, and work bay roll-up doors.

Ongoing: MEP rough-in, restroom rough-in, FP, sheetrock taping & finishing, storage shed roll-up doors, trim painting, fencing, and site lighting

## RSS "C"



RSS "C" Site



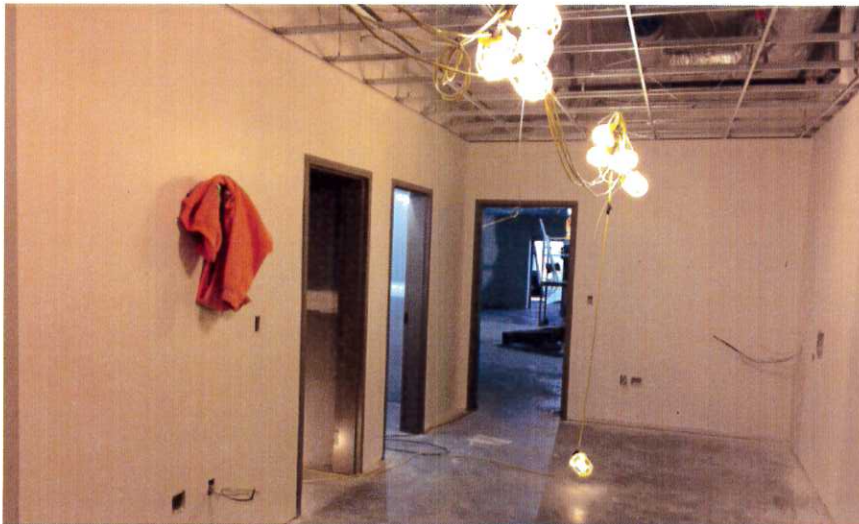
# Job Progress Photos – Beneath the QTA Deck



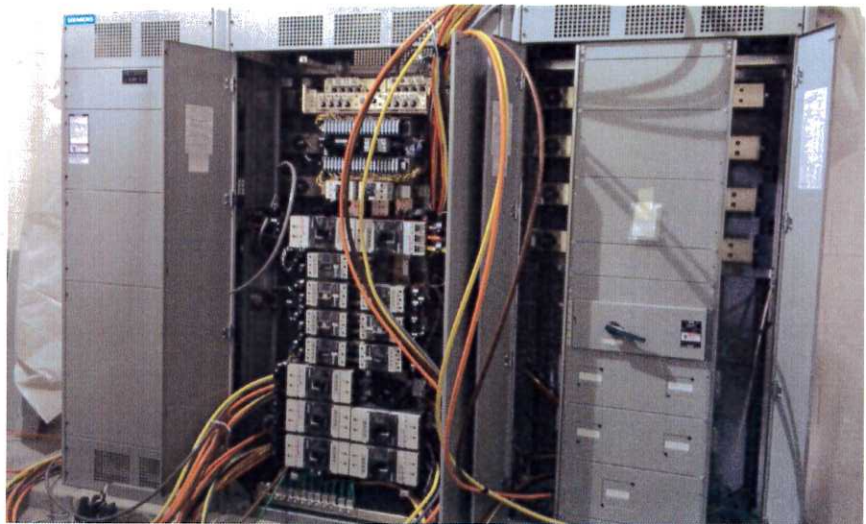
QTA west side stacking area looking toward the fueling area



Start of QTA carwash equipment Installation



QTA Admin build-out, first paint walls and frames; ceiling grid in



QTA East Electrical Room switch gear wire pull



# Job Progress Photos – Inside the RSS Buildings



RSS 'A' Admin Area, walls taped & sanded, frames primed



Interior of an RSS 'C' storage wing addition



RSS 'B' Admin area build-out, exterior wall insulated, sheetrock ready



HVAC and Electrical installation progress in RSS 'C' Work Bay





# Job Progress Photos – Site



Significant amount of sitework in progress at QTA-east side



QTA/RSS road landscaping, irrigation and fence installation



Sanitary line for new East Lift station crossing Main Entrance road

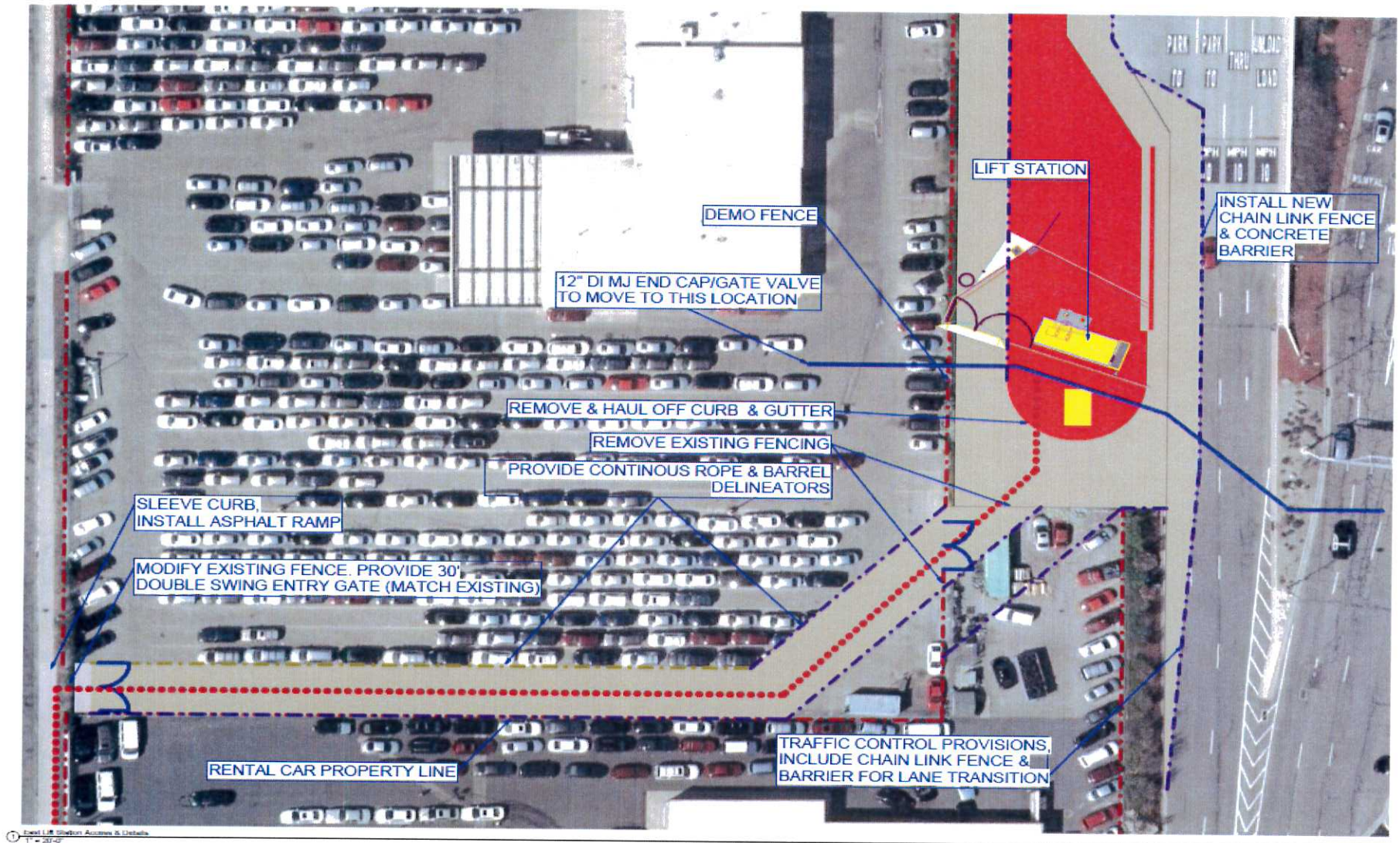


South Lift Station wet well poured, forming generator slab and curb



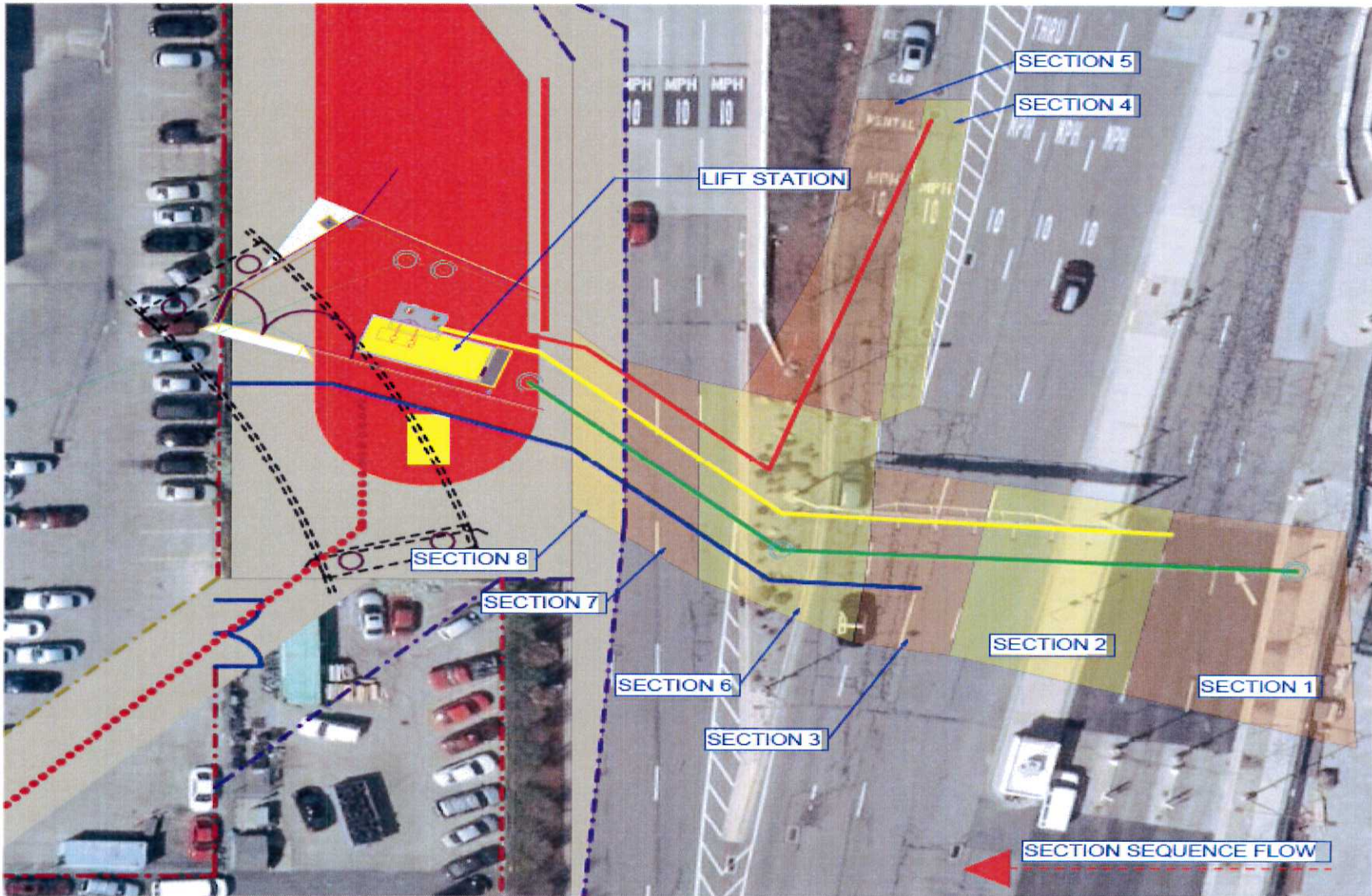


# Current and Near Term Phasing East Lift Station





# Current and Near Term Phasing East Lift Station



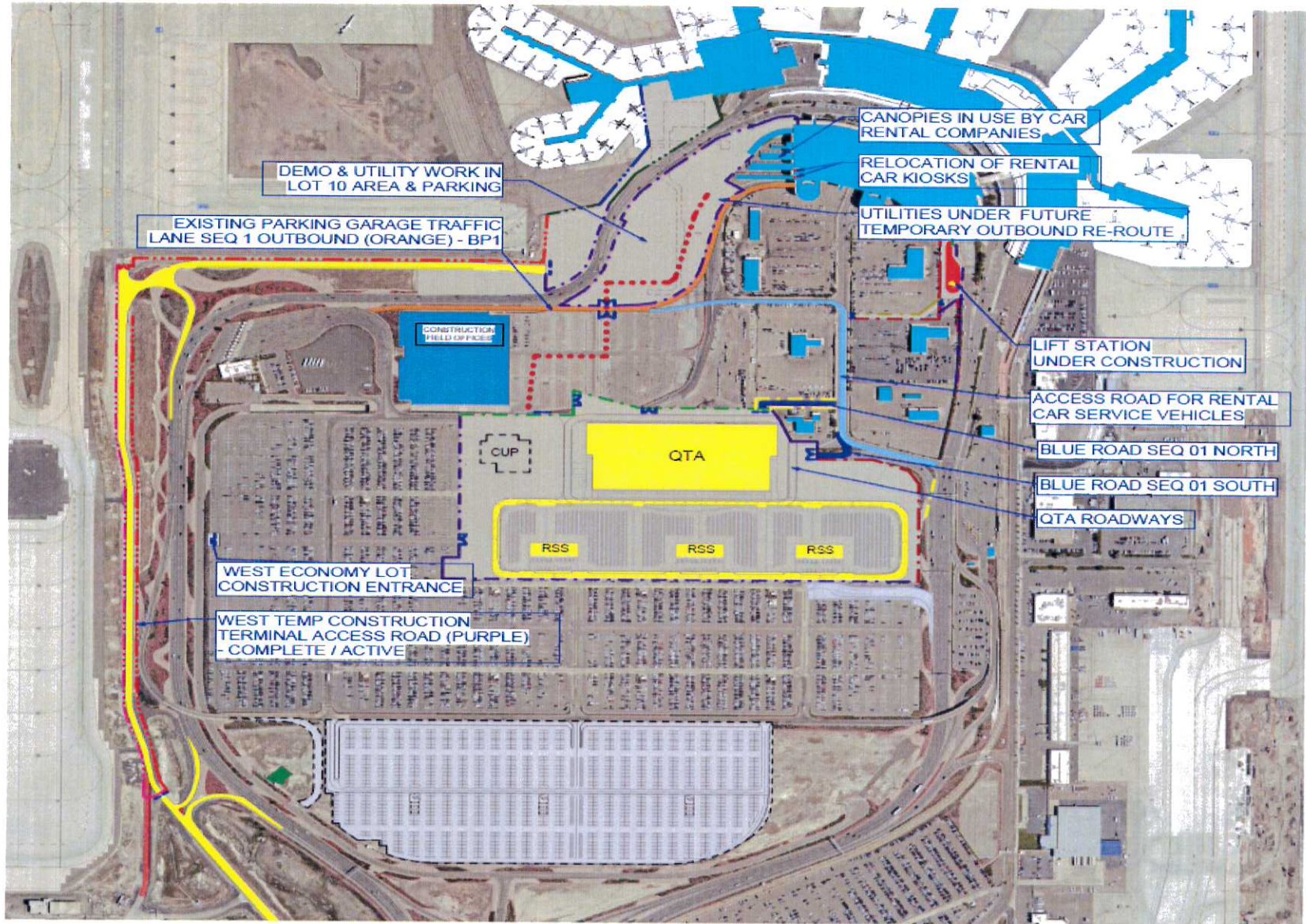
Terminal Drive/Willow Road Crossing  
1/16" = 1' 0"





# Next Phase – Early Activities

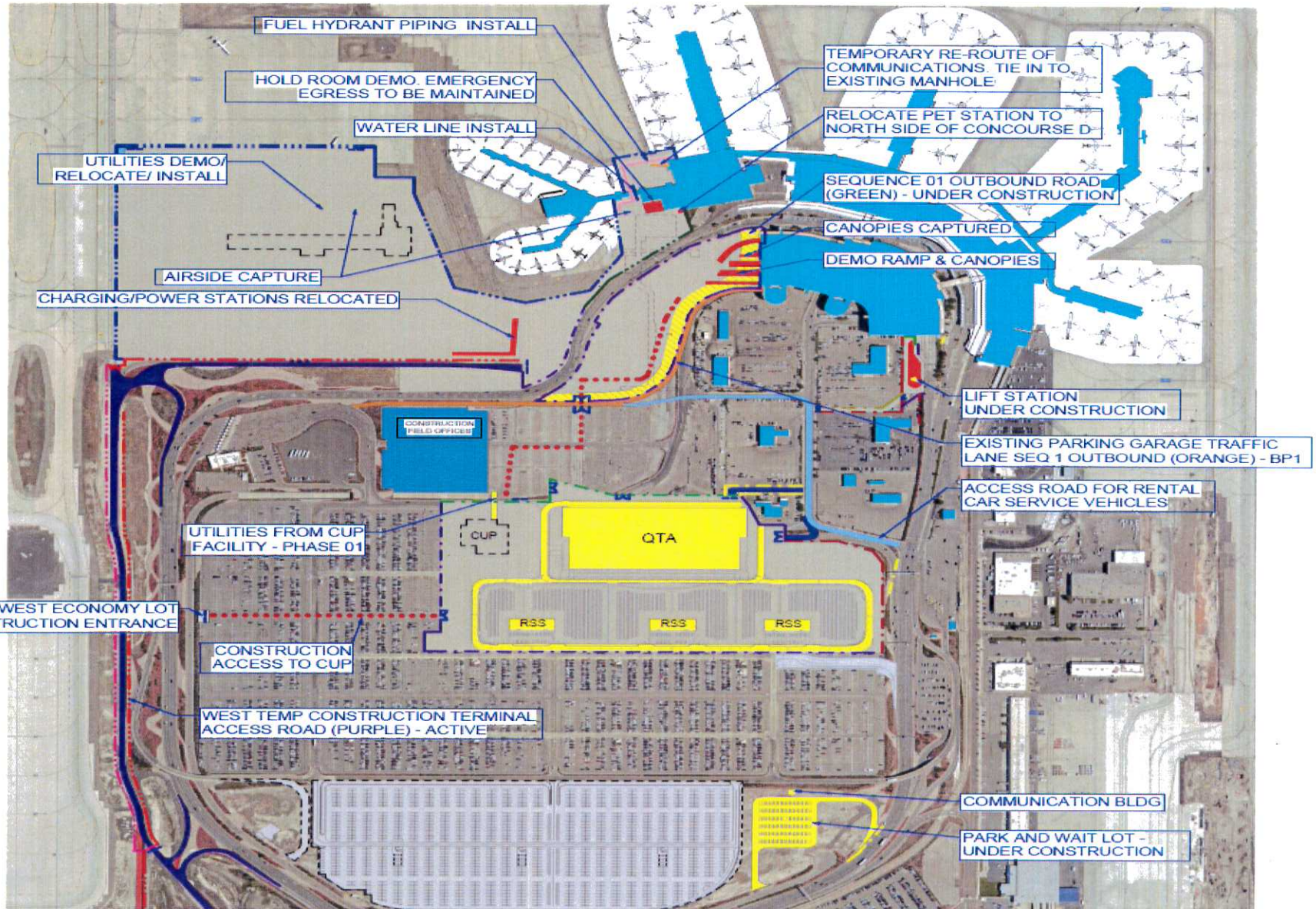
DECEMBER 2015





# Current and Near Term Phasing East Lift Station

JANUARY 2016



## SALT LAKE CITY AIRPORT BOARD

**AGENDA:** DISCUSSION ITEM (D)  
**DATE:** 18 November 2015  
**TO:** Airport Board  
**FROM:** Maureen Riley, Executive Director  
**SUBJECT:** **Year-End Audit**

---

Ryan Tesch, Director of Finance, will present the FY2015 Year-End Audit Financial Report to the Board (presentation on file).



# Salt Lake City Department of Airports

## Review of Financial Position as of June 30, 2015

*SLC Airport Board*

November 18, 2015





## *FY 2015 Financial & Operational Highlights*

- **Passenger traffic increased 5.2% over FY 2014**
- **Landed weights increased 4.1% over FY 2014**
- **Operating Revenue increased 4.2% over FY 2014**
- **Operating Expense decreased 13% over FY 2014**





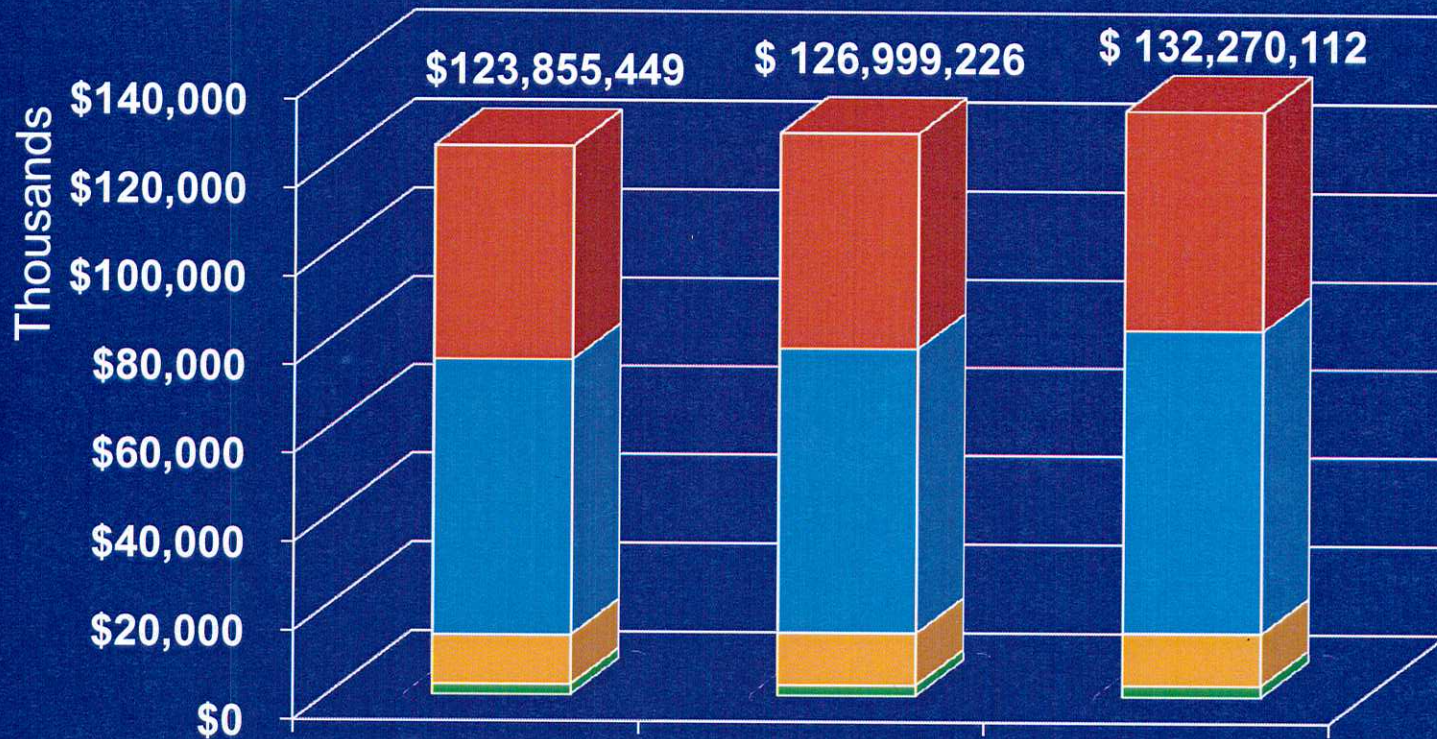
**Budget Comparison**

Description	FY 2015 Amended Budget	FY 2015 Actual	Favorable / (Unfavorable)
Operating Revenue	\$134,847,900	\$ 142,208,738	\$ 7,360,838
Airline Revenue Sharing	(10,453,100)	(9,938,626)	514,474
Operating Expense	<u>(90,946,300)</u>	<u>(76,208,683)</u>	<u>14,737,617</u>
Net Operating Income	\$ 33,448,500	\$ 56,061,429	\$ 22,612,929





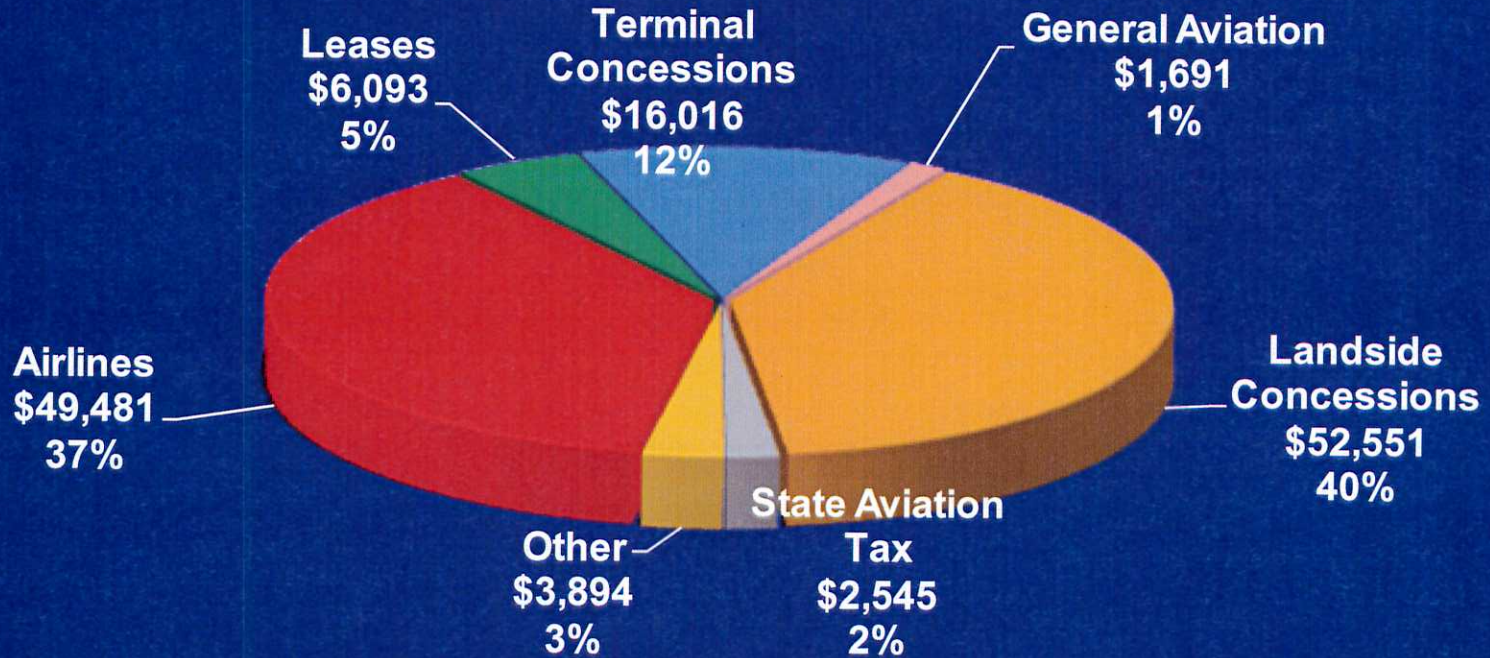
## Comparison of Actual Operating Revenue



	FY 2013	FY 2014	FY 2015
<b>Airline Revenue</b>	\$ 48,198,697	\$ 48,619,985	\$ 49,481,202
<b>Concessions</b>	\$ 62,291,903	\$ 64,352,718	\$ 68,566,147
<b>Leases / Cost Recovery</b>	\$ 11,043,575	\$ 11,683,115	\$ 11,677,663
<b>State Aviation Fuel Tax</b>	\$ 2,321,274	\$ 2,343,408	\$ 2,545,100



**FY 2015 Total Operating Revenue of \$132 Million**  
(in thousands)





**Comparison of Actual Airline Revenue**

Revenue Category	FY 2013 Actual	FY 2014 Actual	FY 2015 Actual
Landing Fees	\$ 23,661,790	\$ 26,735,045	\$ 23,198,602
Terminal Rents	27,379,805	25,077,648	29,020,166
Airline Revenue Sharing	(10,013,679)	(10,290,299)	(9,938,626)
Support Buildings	4,884,030	4,910,485	4,879,155
Passenger Loading Bridge	1,609,335	1,531,267	1,569,216
Fuel Farm	577,866	528,089	528,089
Remain overnight	99,550	127,750	224,600
<b>TOTAL AIRLINE REVENUE:</b>	<b>\$ 48,198,697</b>	<b>\$ 48,619,985</b>	<b>\$ 49,481,202</b>





***Airline Use Agreement Rates and Charges***

Description	Actual FY 2013	Actual FY 2014	Actual FY 2015
Terminal Rents	\$ 71.35	\$ 68.94	\$ 62.31
Landing Fees	\$ 1.91	\$ 2.12	\$ 1.82

FY15 Due or (Owe) Calculation	Amount
<b>LANDING FEES</b>	
Due	\$ 20,063,623
Less Net Billed	22,711,364
<b>Net Due (or Owed) to Airlines</b>	<b>(\$2,647,741)</b>
<b>TERMINAL RENTS</b>	
Due	\$ 25,826,604
Less Net Billed	(26,143,300)
<b>Net Due (or Owed) to Airlines</b>	<b>(\$ 316,696)</b>
<b><i>Net Due to Airlines for the FY15 Reconciliation</i></b>	<b><i>\$2,964,437*</i></b>

\* Amount owed to Airport will be rolled forward into the FY17 rates.



Salt Lake City International Airport

**Cost Per Enplaned Passenger (CPE)  
Ten Year History - SLC**

*Airline CPE is the industry's standard performance indicator.*



Source: Airport records.





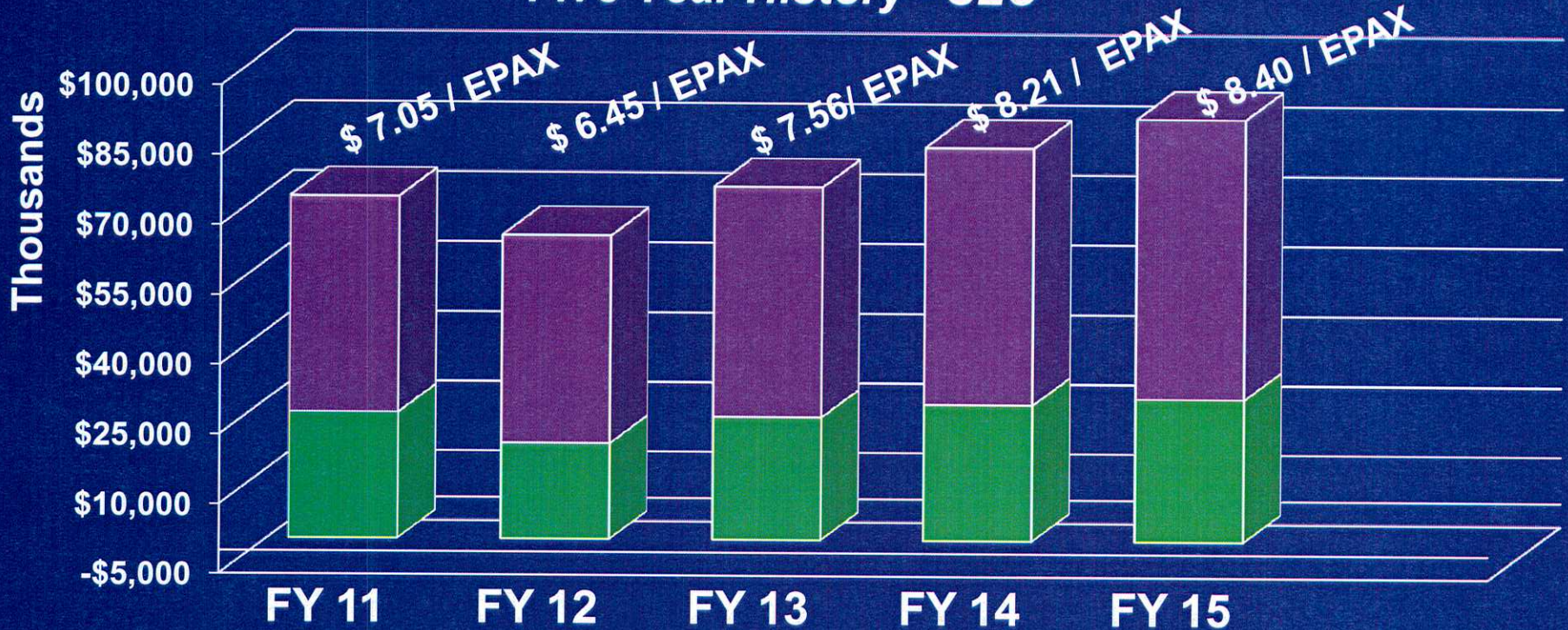
*Comparison of Concession Revenue*

Revenue Category	FY 2013 Actual	FY 2014 Actual	FY 2015 Actual
Auto Parking / Ground Transportation	\$ 30,772,861	\$ 31,135,131	\$ 33,209,644
Car Rental	17,481,940	18,063,577	19,340,855
Restaurants / Vending	8,257,031	9,179,736	9,715,683
Retail	4,794,856	5,067,410	5,308,551
Advertising	985,216	906,864	991,414
<b>TOTAL CONCESSION REVENUE:</b>	<b>\$ 62,291,904</b>	<b>\$ 64,352,718</b>	<b>\$ 68,566,147</b>





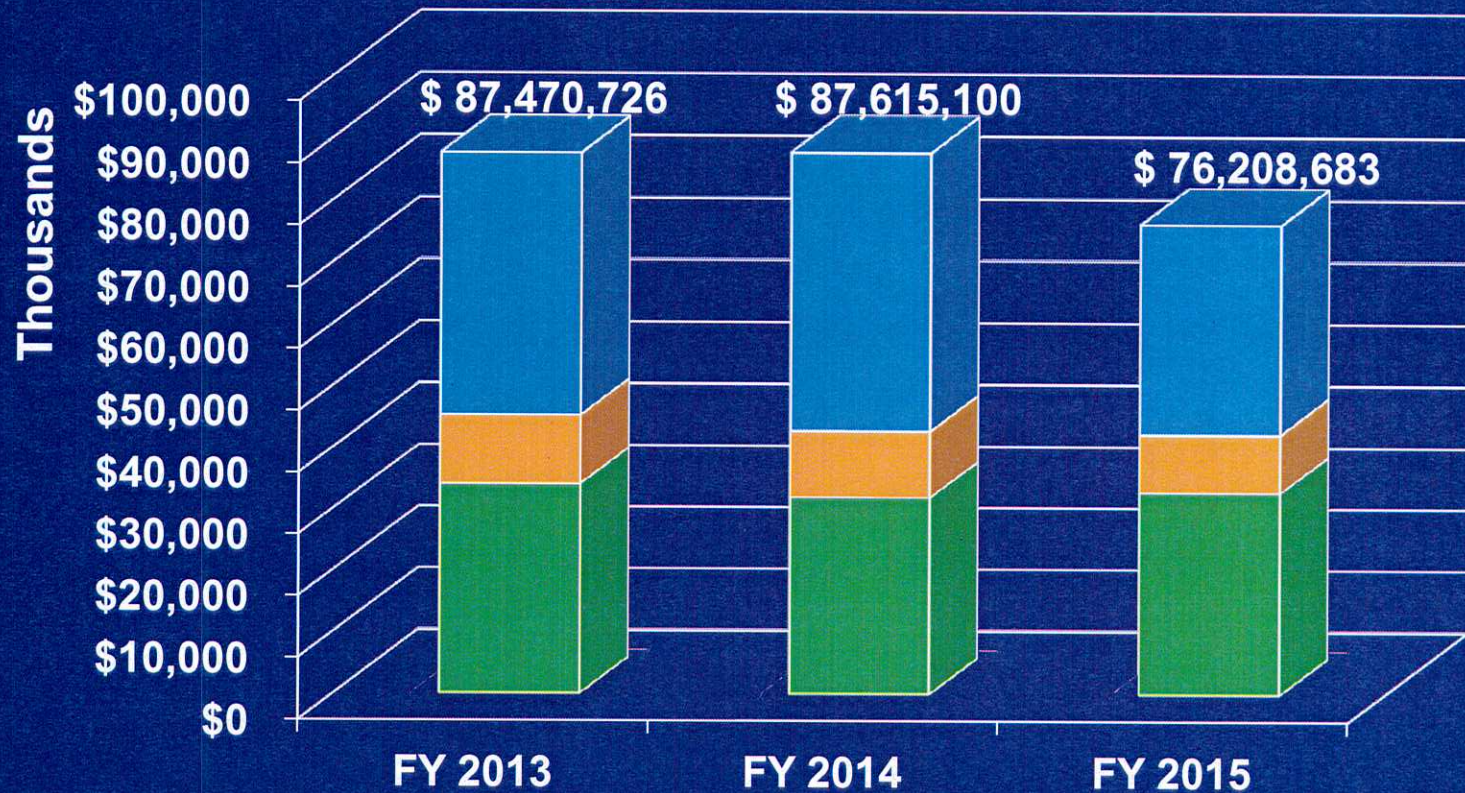
## FY 2015 Gross Sales per Enplaned Passenger (EPAX) Five Year History - SLC



	FY 11	FY 12	FY 13	FY 14	FY 15
<b>Restaurants</b>	\$46,439,767	\$44,661,076	\$49,468,135	\$55,233,199	\$60,203,639
<b>Retail</b>	\$27,101,902	\$20,615,836	\$26,424,871	\$29,325,411	\$30,749,032
<b>EPAX</b>	10,429,397	10,125,086	10,044,069	10,294,694	10,833,708



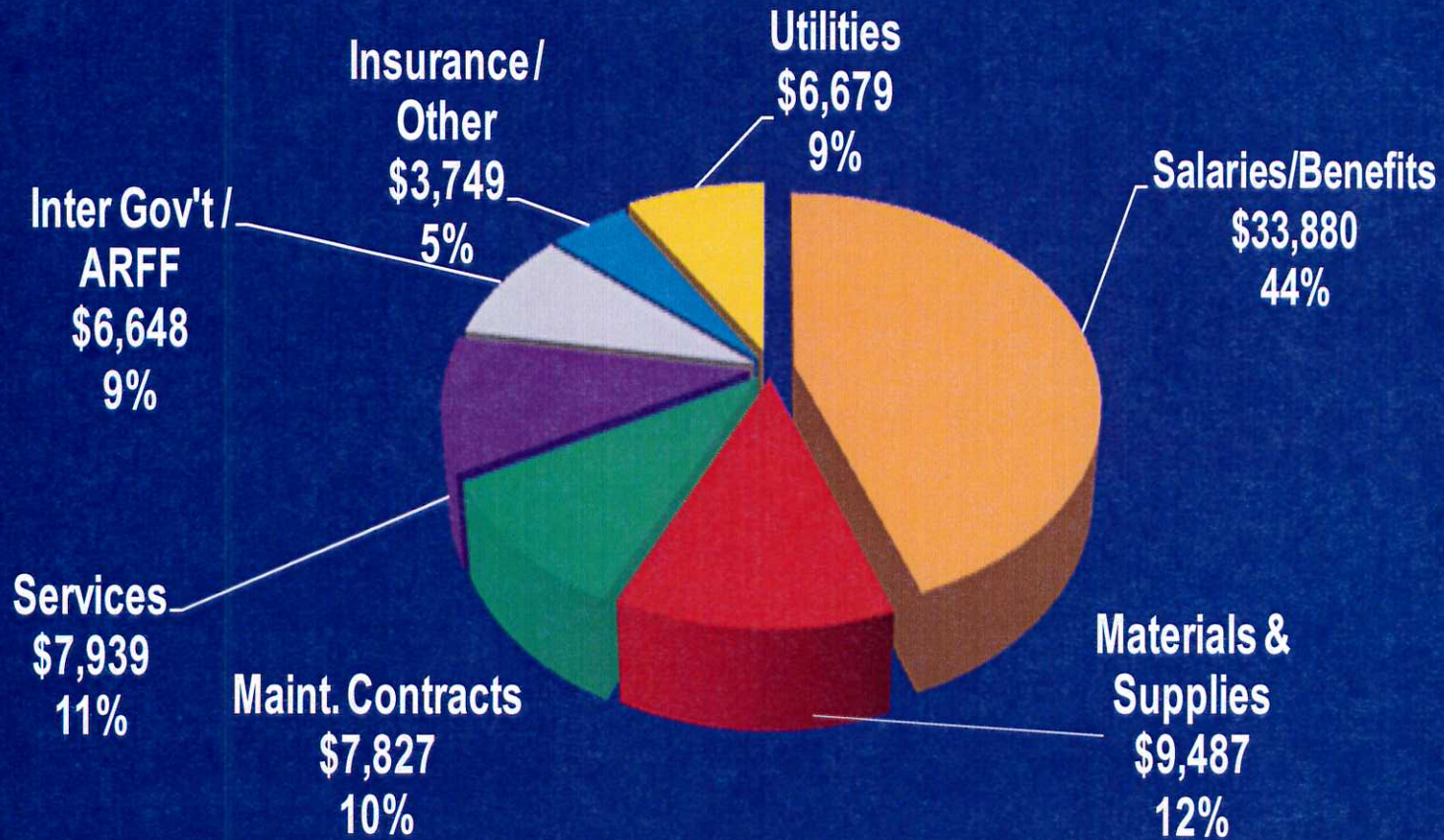
### Comparison of Actual Operating Expense



	FY 2013	FY 2014	FY 2015
<b>Salaries &amp; Benefits</b>	\$ 42,347,685	\$ 44,916,215	\$ 33,880,464
<b>Materials &amp; Supplies</b>	\$ 11,117,920	\$ 10,755,484	\$ 9,486,899
<b>Charges &amp; Services</b>	\$ 34,005,121	\$ 31,943,401	\$ 32,841,320



**FY 2015 Total Actual Operating Expense of \$76.2 million**  
(in thousands)





## Comparison of Actual Operating Expense

Expense Category	FY 2013 Actual	FY 2014 Actual	FY 2015 Actual
Salaries & Benefits	\$ 42,347,687	\$ 44,916,215	\$ 33,880,463
Materials & Supplies	11,117,917	10,755,484	9,486,899
Maintenance Contracts	9,472,616	7,778,077	7,827,217
Services	9,279,224	8,782,264	7,938,829
Utilities	6,478,511	6,579,986	6,679,268
Inter-Governmental / ARFF	6,257,833	6,418,053	6,647,795
Insurance / Other	2,516,938	2,385,021	3,748,212
<b>TOTAL OPERATING EXPENSE:</b>	<b>\$ 87,470,726</b>	<b>\$ 87,615,100</b>	<b>\$ 76,208,683</b>





Salt Lake City International Airport

**Capital Projects and Equipment**

Description of Asset	Asset Total	PFC Funds	CFC Funds	AIP Funds	Airport Funds
<b>Capital Projects:</b>					
TRP South Parking Lot	\$ 15,448,115		\$15,448,115		
JMK/ OIP/ RCR Land Acquisition	6,151,325				6,151,325
Apron Reconstruction – East of Spots 3 & 4	3,385,285	644,205		2,119,000	622,080
Overlay Entrance/ Exit Roads	1,296,789				1,296,789
SVRA Apron Rehabilitation	556,582			444,531	112,051
SVRA – Maintenance Building (Design)	532,048				532,048
Roof Replacements Con C & D	444,761				444,761
<b>Equipment:</b>					
Camera Upgrades	690,252				690,252
Rubber Removal Vehicle	614,065				614,065
Trucks with Dumpbeds	339,538				339,538
AVI Readers	225,722				225,722
Computer Training System	104,200				104,200
<b>TOTAL:</b>	<b>\$ 29,788,682</b>	<b>\$ 644,205</b>	<b>\$15,448,115</b>	<b>\$ 2,563,531</b>	<b>\$ 11,132,831</b>





## Salt Lake City International Airport

	FY 2013	FY 2014	FY 2015
Cash provided by operating activities	\$ 39,279,409	\$ 45,327,881	\$ 51,185,560
Cash provided by investing activities	(45,951,302)	13,384,576	11,786,922
Cash provided by passenger facility charges	37,097,184	39,095,843	40,955,290
Cash provided by customer facility charges	14,571,677	15,563,232	15,673,325
Cash provided by grants	18,149,926	25,206,668	9,937,656
Cash overdraft with City pooled cash accounts	-	-	10,043,327
Cash provided from sale of capital assets & equipment	204,165	29,242	134,498
Payments for construction of property	(45,700,302)	(70,623,007)	(130,785,419)
Cash and cash equivalents at beginning of year	281,436,266	299,087,023	367,071,458
Cash and cash equivalents at the end of the year	299,087,023	367,071,458	376,002,617
Net increase (decrease) in cash	17,650,757	67,984,435	\$8,931,159
Investments	63,620,488	54,696,610	45,097,179
<b>Total Cash and Investments</b>	<b>\$362,707,511</b>	<b>\$421,768,068</b>	<b>\$421,099,796</b>
<b>Restricted Cash</b>	<b>\$132,826,828</b>	<b>\$179,263,493</b>	<b>\$196,438,862</b>
<b>Unrestricted Cash</b>	<b>229,880,683</b>	<b>242,504,575</b>	<b>224,660,934</b>
<b>Total Cash and Investments</b>	<b>\$362,707,511</b>	<b>\$421,768,068</b>	<b>\$421,099,796</b>





Thank You

## SALT LAKE CITY AIRPORT BOARD

**AGENDA:** DISCUSSION ITEM (E)  
**DATE:** 18 November 2015  
**TO:** Airport Board  
**FROM:** Maureen Riley, Executive Director  
**SUBJECT:** **Preview of the New Website**

---

Bianca Shreeve, Public Relations and Media Manager, will present to the Board a preview of the Salt Lake City Airports new website.

## SALT LAKE CITY AIRPORT BOARD

**AGENDA:** DISCUSSION ITEM (F)  
**DATE:** 18 November 2015  
**TO:** Airport Board  
**FROM:** Maureen Riley, Executive Director  
**SUBJECT:** **Nominations for Board Chair and Vice-Chair**

---

The Board will be asked to make nominations for a new Board Chair and Vice-Chair. Voting will be conducted at the January 2016 meeting.



DEPARTMENT OF AIRPORTS  
BOARD MEETING

18 November 2015

INFORMATIONAL ITEMS



**SALT LAKE CITY DEPARTMENT OF AIRPORTS**  
**(An Enterprise Fund of Salt Lake City Corporation)**  
**Statements of Net Position**

<i>September 30,</i>	Unaudited	
	2015	2014
<b>ASSETS</b>		
<b>Current Assets</b>		
Cash and cash equivalents		
Unrestricted	\$ 10,000,000	\$ 10,000,000
Designated for future development	138,833,084	161,209,004
Current investments	-	-
Airline and rental fees receivable	18,458,397	15,607,388
Other current assets	3,696,953	4,347,628
<b>Total current assets</b>	<b>170,988,434</b>	<b>191,164,020</b>
<b>Noncurrent Assets</b>		
Restricted cash and cash equivalents		
Construction projects	130,787,040	129,483,372
Customer facility charges	60,036,143	43,773,799
Operation and maintenance reserve fund	15,669,933	15,157,717
Renewal and replacement reserve fund	5,000,000	5,000,000
Noncurrent investments	44,950,842	54,696,610
<b>Total noncurrent assets and investments</b>	<b>256,443,957</b>	<b>248,111,498</b>
Capital assets		
Land	99,156,549	93,005,224
Building and improvements	1,178,350,742	1,178,158,727
Equipment	133,380,789	130,771,810
Construction in progress	206,467,885	108,887,408
<b>Total capital assets - at cost</b>	<b>1,617,355,964</b>	<b>1,510,823,169</b>
Less accumulated depreciation		
Building and improvements	748,111,696	718,859,167
Equipment	84,680,838	79,791,044
<b>Total accumulated depreciation</b>	<b>832,792,534</b>	<b>798,650,211</b>
<b>Net capital assets</b>	<b>784,563,430</b>	<b>712,172,958</b>
Other assets		
Other receivables	802,632	889,896
Other long-term assets	88,868	134,411
<b>Total other assets</b>	<b>891,500</b>	<b>1,024,307</b>
<b>Total noncurrent assets</b>	<b>1,041,898,888</b>	<b>961,308,763</b>
<b>Total Assets</b>	<b>\$ 1,212,887,322</b>	<b>\$ 1,152,472,783</b>
<b>Deferred Outflows of Resources</b>		
Pensions	3,566,982	-
<b>Total assets and deferred outflows of resources</b>	<b>\$ 1,216,454,304</b>	<b>\$ 1,152,472,783</b>



**SALT LAKE CITY DEPARTMENT OF AIRPORTS**  
**(An Enterprise Fund of Salt Lake City Corporation)**  
**Statements of Net Position**

<i>September 30,</i>	Unaudited	
	2015	2014
<b>LIABILITIES</b>		
<b>Current Liabilities</b>		
Accounts payable	\$ 5,755,354	\$ 10,775,236
Accrued compensation	1,354,174	1,209,467
Net OPEB obligation	235,690	-
Other accrued liabilities	4,006,972	2,792,384
Deposits and advance rentals	3,778,388	3,762,728
<b>Total current liabilities</b>	<b>15,130,578</b>	<b>18,539,816</b>
<b>Noncurrent Liabilities</b>		
Noncurrent compensation liability	3,682,739	3,748,161
Net OPEB obligation	-	8,448,000
Net pension liability	20,232,458	-
Pollution remediation liability	189,487	87,649
Other long-term liabilities	1,927,323	431,594
<b>Total noncurrent liabilities</b>	<b>26,032,007</b>	<b>12,715,404</b>
<b>Total Liabilities</b>	<b>41,162,585</b>	<b>31,255,220</b>
<b>Deferred Inflows of Resources</b>		
Pensions	2,128,856	-
<b>NET POSITION</b>		
Restricted for construction projects	130,787,040	129,483,372
Restricted for customer facility charges	60,036,143	43,773,799
Restricted for operation and maintenance reserve fund	15,669,933	15,157,717
Restricted for renewal and replacement reserve fund	5,000,000	5,000,000
<b>Total Restricted</b>	<b>211,493,116</b>	<b>193,414,888</b>
Net investment in capital assets	784,563,430	712,172,958
Unrestricted	177,106,318	215,629,718
<b>Net Position</b>	<b>\$ 1,173,162,863</b>	<b>\$ 1,121,217,564</b>



**SALT LAKE CITY DEPARTMENT OF AIRPORTS**  
 (An Enterprise fund of Salt Lake City Corporation)  
**Statements of Revenues, Expenses, and Changes in Fund Net Position**

	Unaudited	
<i>for the three month period ended September 30,</i>	2015	2014
<b>Operating Revenues</b>		
Airfield	\$ 7,920,840	\$ 7,780,972
Terminals	13,004,980	12,247,720
Landside	14,751,086	13,313,291
Auxiliary airports	183,150	199,872
General aviation	521,243	550,495
Support areas	1,789,789	1,941,859
Other	542,382	553,317
Operating revenues	38,713,470	36,587,526
Less airline revenue sharing	(2,375,178)	(2,613,275)
Total operating revenues	36,338,292	33,974,251
<b>Operating Expenses</b>		
Airfield	6,046,482	6,214,914
Terminals	9,259,161	9,774,518
Landside	2,907,834	2,951,449
Auxiliary airports	380,555	422,793
General aviation	294,220	289,359
Support areas	240,658	232,850
Roads and grounds	1,863,762	1,617,790
Other	663,166	603,282
Total operating expenses before depreciation	21,655,839	22,106,955
<b>Operating Income Before Depreciation</b>	14,682,454	11,867,296
<b>Depreciation Expense</b>	15,476,469	15,162,026
<b>Operating Loss</b>	(794,015)	(3,294,730)
<b>Non-Operating Revenues (Expenses)</b>		
Passenger facility charges	10,463,525	10,001,459
Customer facility charges	4,528,910	4,390,350
Gain (Loss) on disposition of property and equipment	157,347	-
Interest income	431,565	451,600
Net non-operating income (expense)	15,581,347	14,843,410
<b>Capital Contributions</b>		
Contributions and grants, principally Airport Improvement Program	394,203	-
State grants	-	-
Total capital contributions	394,203	-
<b>Net Position</b>		
Increase in net position	15,181,535	11,548,678
Net Position, beginning of period	1,157,981,328	1,109,668,886
Net Position, end of period	\$ 1,173,162,863	\$ 1,121,217,564



**SALT LAKE CITY DEPARTMENT OF AIRPORTS**  
 (An Enterprise fund of Salt Lake City Corporation)  
**OPERATING REVENUES AND EXPENDITURES TO BUDGET**

	JULY - SEPT 2015 ACTUALS	JULY - SEPT 2015 BUDGET	SURPLUS/ DEFICIT	PERCENT DIFFERENT
<b>Revenues:</b>				
Landing Fees	\$ 6,793,767	\$ 6,519,600	\$ 274,167	4.2%
Fuel Farm	132,022	132,000	22	0.0%
Aircraft Remain Overnight Fees	61,750	48,700	13,050	26.8%
Cargo Bldg. & Ramp Use Fee	393,664	399,600	(5,936)	-1.5%
Security Charges to TSA	72,921	79,200	(6,279)	-7.9%
Extraordinary Service Charges	18,283	20,400	(2,117)	-10.4%
Passenger Loading Bridges	630,607	417,200	213,407	51.2%
Tenant Telephone Fees	94,283	88,900	5,383	6.1%
Terminal Rents	7,588,168	7,423,300	164,868	2.2%
Executive Terminal	32,738	50,300	(17,562)	-34.9%
General Aviation Hangars	296,275	286,500	9,775	3.4%
FBO Hangars/Fuel Oil Royalty	133,014	132,200	814	0.6%
Flight Kitchens	377,536	325,100	52,436	16.1%
Other Buildings & Office Space	1,363,439	1,335,800	27,639	2.1%
Food Service & Vending	2,527,673	2,503,900	23,773	0.9%
News/Gift Shop	1,433,692	1,416,500	17,192	1.2%
Car Rental	5,937,277	5,552,700	384,577	6.9%
Leased Site Areas	471,832	501,400	(29,568)	-5.9%
Auto Parking/Ground Transportation	8,801,449	8,404,200	397,249	4.7%
Advertising	254,233	188,300	65,933	35.0%
State Aviation Fuel Tax	767,930	671,000	96,930	14.4%
Military	-	34,200	(34,200)	-100.0%
Glycol Recycling Sales	21,338	94,900	(73,562)	-77.5%
ARFF Training	123,254	98,700	24,554	24.9%
Other	386,325	198,300	188,025	94.8%
Less: Airline Revenue Sharing	(2,375,178)	(2,501,000)	125,822	-5.03%
<b>Total Operating Revenues</b>	<b>36,338,292</b>	<b>34,421,900</b>	<b>1,916,392</b>	<b>5.6%</b>
<b>Expenses:</b>				
Salary & Wages	8,076,067	8,137,715	61,648	0.8%
Employee Benefits	4,044,116	4,100,434	56,318	1.4%
Maintenance Supplies	975,741	1,932,190	956,449	49.5%
Automotive Supplies	430,078	520,400	90,322	17.4%
Other Supplies	244,358	494,400	250,042	50.6%
Insurance Premiums	330,869	350,000	19,131	5.5%
Janitorial Service	1,628,654	1,701,100	72,446	4.3%
Maintenance Contracts	628,189	484,300	(143,889)	-29.7%
Other Contractual Services	724,293	911,586	187,293	20.5%
Professional & Tech Service	1,352,986	1,368,600	15,615	1.1%
Utilities	1,732,418	1,600,800	(131,618)	-8.2%
Administrative Service Fee	358,751	363,300	4,549	1.3%
Aircraft Rescue Fire Fighting	1,060,883	987,800	(73,083)	-7.4%
Other Expenses	359,413	426,800	67,387	15.8%
Contingency Reserve	-	-	-	0.0%
<b>Total Operating Expenses</b>	<b>21,946,815</b>	<b>23,379,425</b>	<b>1,432,610</b>	<b>6.1%</b>
Capital Costs - E&M Division	290,976	290,976	0	0.0%
<b>Total Operating Expense</b>	<b>21,655,839</b>	<b>23,088,449</b>	<b>1,432,610</b>	<b>6.2%</b>
<b>Operating Income</b>	<b>\$ 14,682,454</b>	<b>\$ 11,333,451</b>	<b>\$ 3,349,003</b>	<b>29.5%</b>



**SALT LAKE CITY DEPARTMENT OF AIRPORTS**

(An Enterprise fund of Salt Lake City Corporation)

**OPERATING REVENUES AND EXPENDITURES TO PRIOR YEAR**

	JULY - SEPTEMBER 2015	JULY - SEPTEMBER 2014	SURPLUS/ (DEFICIT)	PERCENT CHANGE
<b>Revenues:</b>				
Landing Fees	\$ 6,793,767	\$ 6,699,539	\$ 94,228	1.4%
Fuel Farm	132,022	132,022	0	0.0%
Aircraft Remain Overnight Fees	61,750	61,450	300	0.5%
Cargo Bldg. & Ramp Use Fee	393,664	597,947	(204,283)	-34.2%
Security Charges to TSA	72,921	77,835	(4,914)	-6.3%
Extraordinary Service Charges	18,283	19,623	(1,340)	-6.8%
Passenger Loading Bridges	630,607	406,432	224,175	55.2%
Tenant Telephone Fees	94,283	89,728	4,555	5.1%
Terminal Rents	7,588,168	7,299,391	288,777	4.0%
Executive Terminal	32,738	49,444	(16,706)	-33.8%
General Aviation Hangars	296,275	303,810	(7,535)	-2.5%
FBO Hangars/Fuel Oil Royalty	133,014	129,997	3,017	2.3%
Flight Kitchens	377,536	325,038	52,498	16.2%
Other Buildings & Office Space	1,363,439	1,461,402	(97,963)	-6.7%
Food Service & Vending	2,527,673	2,416,675	110,998	4.6%
News/Gift Shops	1,433,692	1,389,483	44,209	3.2%
Car Rental	5,937,277	5,386,443	550,834	10.2%
Leased Site Areas	471,832	526,395	(54,563)	-10.4%
Auto Parking/Ground Transportation	8,801,449	7,914,487	886,962	11.2%
Advertising	254,233	176,360	77,873	44.2%
State Aviation Fuel Tax	767,930	697,632	70,298	10.1%
Military	-	34,242	(34,242)	-100.0%
Glycol Recycling Sales	21,338	93,995	(72,657)	-77.3%
ARFF Training	123,254	75,515	47,739	63.2%
Other	386,325	222,640	163,685	73.5%
Less: Airline Revenue Sharing	(2,375,178)	(2,613,275)	238,097	-9.1%
<b>Operating Revenue</b>	<b>36,338,292</b>	<b>33,974,251</b>	<b>2,364,041</b>	<b>7.0%</b>
<b>Expenses:</b>				
Salary & Wages	8,076,067	7,776,940	299,127	3.8%
Employee Benefits	4,044,116	3,949,226	94,890	2.4%
Maintenance Supplies	975,741	1,169,817	(194,076)	-16.6%
Automotive Supplies	430,078	492,312	(62,234)	-12.6%
Other Supplies	244,358	339,790	(95,432)	-28.1%
Insurance Premiums	330,869	1,261,436	(930,567)	-73.8%
Janitorial Service	1,628,654	1,600,978	27,676	1.7%
Maintenance Contracts	628,189	535,426	92,763	17.3%
Other Contractual Services	724,293	781,041	(56,748)	-7.3%
Professional & Tech Service	1,352,986	1,078,823	274,163	25.4%
Utilities	1,732,418	1,688,914	43,504	2.6%
Administrative Service Fee	358,751	346,727	12,024	3.5%
Aircraft Rescue Fire Fighting	1,060,883	1,039,773	21,110	2.0%
Other Expenses	359,413	348,990	10,423	3.0%
Contingency Reserve	-	-	-	0.0%
<b>Total Operating Expenses</b>	<b>21,946,815</b>	<b>22,410,193</b>	<b>(463,378)</b>	<b>-2.1%</b>
Capital Costs - E&M Division	290,976	303,237	(12,261)	-4.0%
<b>Total Operating Expense</b>	<b>21,655,839</b>	<b>22,106,956</b>	<b>(451,117)</b>	<b>-2.0%</b>
<b>Operating Income</b>	<b>\$ 14,682,454</b>	<b>\$ 11,867,295</b>	<b>\$ 2,815,159</b>	<b>23.7%</b>





**SALT LAKE CITY INTERNATIONAL AIRPORT  
AIR TRAFFIC STATISTICS AND ACTIVITY REPORT  
NINE MONTHS ENDED SEPTEMBER 2015**

	September 2015	CHANGE	YTD 2015	CHANGE	12 MO ROLLING Ending 09/2015	CHANGE
<b>PASSENGERS</b>						
<i>DOMESTIC</i>						
Enplaned	878,672	2.80%	8,256,451	4.80%	10,690,554	4.39%
Deplaned	871,945	3.24%	8,167,846	4.02%	10,700,287	4.59%
<b>TOTAL DOMESTIC</b>	<b>1,750,617</b>	<b>3.02%</b>	<b>16,424,297</b>	<b>4.41%</b>	<b>21,390,841</b>	<b>4.49%</b>
<i>INTERNATIONAL</i>						
Enplaned	23,081	74.91%	144,768	0.00%	259,184	43.50%
Deplaned	22,889	72.41%	224,692	54.13%	263,659	45.83%
<b>TOTAL INTERNATIONAL</b>	<b>45,970</b>	<b>73.66%</b>	<b>369,460</b>	<b>27.16%</b>	<b>522,843</b>	<b>44.66%</b>
<b>TOTAL PASSENGERS</b>	<b>1,796,587</b>	<b>4.10%</b>	<b>16,793,757</b>	<b>4.82%</b>	<b>21,913,684</b>	<b>5.19%</b>
<b>LANDED WEIGHT</b>						
Air Carriers	995,829,991	-0.15%	9,281,583,544	3.15%	12,252,084,021	3.84%
Cargo Carriers	81,563,985	5.61%	722,367,160	4.50%	1,006,631,220	6.01%
<b>TOTAL LANDED WEIGHT (LBS)</b>	<b>1,077,393,976</b>	<b>0.26%</b>	<b>10,003,950,704</b>	<b>3.25%</b>	<b>13,258,715,241</b>	<b>4.00%</b>
<b>MAIL</b>						
Enplaned	2,123,126	41.01%	18,431,282	30.76%	23,122,887	23.95%
Deplaned	1,051,290	57.38%	9,194,696	22.89%	11,156,578	8.23%
<b>TOTAL MAIL (LBS)</b>	<b>3,174,416</b>	<b>46.04%</b>	<b>27,625,978</b>	<b>28.03%</b>	<b>34,279,465</b>	<b>18.35%</b>
<b>CARGO</b>						
Enplaned	14,395,767	4.69%	122,476,496	-1.10%	167,426,563	-0.43%
Deplaned	14,447,420	9.37%	123,600,204	6.21%	167,045,733	5.74%
<b>TOTAL CARGO (LBS)</b>	<b>28,843,187</b>	<b>6.98%</b>	<b>246,076,700</b>	<b>2.44%</b>	<b>334,472,296</b>	<b>2.56%</b>
<b>MAIL &amp; CARGO</b>						
Enplaned	7,198	4.70%	61,238	-1.10%	83,713	-0.43%
Deplaned	7,224	9.37%	61,800	6.21%	83,523	5.74%
<b>TOTAL MAIL &amp; CARGO (TONS)</b>	<b>14,422</b>	<b>6.99%</b>	<b>123,038</b>	<b>2.44%</b>	<b>167,236</b>	<b>2.56%</b>
<b>AIRCRAFT OPERATIONS</b>						
Passenger Aircraft	18,598	-5.88%	176,786	-2.08%	234,992	-1.26%
All-Cargo Aircraft	1,498	2.60%	13,484	0.07%	18,446	0.97%
General Aviation	4,349	-24.17%	41,911	-16.01%	57,512	-13.14%
Military	865	500.69%	3,870	123.83%	4,416	100.27%
<b>TOTAL AIRCRAFT OPERATIONS</b>	<b>25,310</b>	<b>-6.60%</b>	<b>236,051</b>	<b>-3.91%</b>	<b>315,366</b>	<b>-2.86%</b>



**SALT LAKE CITY INTERNATIONAL AIRPORT  
PASSENGER TRAFFIC REPORT  
NINE MONTHS ENDED SEPTEMBER 2015**

	September 2014	September 2015	% CHANGE	YTD 2014	YTD 2015	% CHANGE	12 MO ROLLING Ending 09/2015	% CHANGE
<b>ENPLANED PASSENGERS</b>								
ALASKA	23,200	20,846	-10.15%	140,096	213,340	52.28%	274,515	71.69%
Horizon Air / Alaska	3,038	5,034	65.70%	12,227	36,311	196.97%	47,222	286.21%
Skywest / Alaska	5,248	6,367	21.32%	19,706	72,812	269.49%	88,648	349.85%
AMERICAN	18,928	23,312	23.16%	173,322	255,032	47.14%	308,023	40.17%
American Eagle/Republic	3,212	3,981	23.94%	25,439	39,405	54.90%	48,826	56.54%
Envoy Air (American)	0	0	0.00%	23,420	0	-100.00%	0	-100.00%
American/Mesa Air	0	0	0.00%	0	388	100.00%	1,241	100.00%
SkyWest (American)	4,115	4,636	12.66%	33,315	50,572	51.80%	61,911	46.31%
DELTA	416,921	449,547	7.83%	3,764,436	4,105,425	9.06%	5,316,460	9.53%
SkyWest (Delta Connection)	191,037	166,323	-12.94%	1,794,000	1,629,075	-9.19%	2,186,111	-9.22%
Compass (Delta Connection)	12,648	18,285	44.57%	181,174	142,861	-21.15%	184,895	-26.56%
FRONTIER	19,896	13,845	-30.41%	177,965	147,287	-17.24%	220,210	-7.13%
JETBLUE	13,487	16,723	23.99%	130,617	160,293	22.72%	206,423	21.39%
SOUTHWEST	92,429	101,621	9.94%	915,932	897,671	-1.99%	1,169,572	-1.11%
UNITED	6,313	17,275	173.64%	55,665	139,008	149.72%	154,709	150.39%
SkyWest (United Express)	25,925	22,848	-11.87%	207,385	220,983	6.56%	291,888	7.51%
Shuttle America (United Express)	2,524	1,866	-26.07%	38,327	12,443	-67.53%	21,343	-55.61%
Continental Airlines (United)	0	0	0.00%	23,688	0	-100.00%	0	-100.00%
Express Jet (Continental Express)	2,503	0	-100.00%	23,236	2,451	-89.45%	13,156	-58.99%
Mesa Airlines (United Express)	0	373	100.00%	281	5,871	1989.32%	5,871	1989.32%
Republic Airways (United)	0	722	100.00%	2,730	18,870	591.21%	20,826	566.65%
US AIRWAYS	24,372	26,514	8.79%	254,195	231,780	-8.82%	300,770	-6.86%
Mesa (US Airways Express)	0	0	0.00%	0	0	0.00%	0	0.00%
SkyWest (US Airways Express)	1,335	1,352	1.27%	14,458	15,151	4.79%	20,410	9.84%
Charters	813	283	-65.19%	11,802	4,190	-64.50%	6,708	-48.57%
<b>TOTAL ENPLANED PASSENGERS</b>	<b>867,944</b>	<b>901,753</b>	<b>3.90%</b>	<b>8,023,416</b>	<b>8,401,219</b>	<b>4.71%</b>	<b>10,949,738</b>	<b>5.07%</b>
<b>DEPLANED PASSENGERS</b>								
ALASKA AIR	22,299	21,204	-4.91%	131,885	206,591	56.64%	269,924	80.53%
Horizon Air / Alaska	3,441	5,020	45.89%	13,510	35,725	164.43%	46,636	245.20%
Skywest / Alaska	5,468	6,792	24.21%	19,812	73,501	270.99%	89,900	353.77%
AMERICAN	19,979	23,455	17.40%	179,128	260,266	45.30%	316,871	39.01%
American Eagle/Republic	3,426	3,883	13.34%	26,372	39,586	50.11%	50,179	54.58%
Envoy Air (American)	0	0	0.00%	22,647	0	-100.00%	0	-100.00%
American/Mesa Air	0	0	0.00%	0	295	100.00%	1,185	100.00%
SkyWest (American)	4,021	4,616	14.80%	32,168	50,042	55.56%	61,453	50.06%
DELTA	411,266	444,864	8.17%	3,756,582	4,105,514	9.29%	5,326,874	9.59%
SkyWest (Delta Connection)	190,462	168,140	-11.72%	1,770,970	1,627,686	-8.09%	2,188,124	-8.22%
Compass (Delta Connection)	12,477	17,823	42.85%	198,797	140,425	-29.36%	185,248	-31.77%
FRONTIER	20,074	14,189	-29.32%	178,872	152,725	-14.62%	225,066	-5.66%
JETBLUE	12,876	15,751	22.33%	129,029	161,652	25.28%	207,629	22.79%
SOUTHWEST	91,400	100,786	10.27%	919,168	898,930	-2.20%	1,173,402	-1.20%
UNITED	6,244	15,753	152.29%	55,798	135,742	143.27%	151,841	145.52%
SkyWest (United Express)	24,776	22,281	-10.07%	197,495	215,981	9.36%	285,472	10.39%
Shuttle America (United Express)	2,591	1,772	-31.61%	38,604	12,157	-68.51%	21,143	-56.66%
Continental Airlines (United)	0	0	0.00%	23,053	0	-100.00%	0	-100.00%
Express Jet (Continental Express)	2,538	0	-100.00%	23,624	2,582	-89.07%	13,059	-59.81%
Mesa Airlines / United Express	0	374	100.00%	0	6,594	100.00%	6,594	100.00%
Republic Airways (United)	0	890	100.00%	3,073	20,929	581.06%	23,311	540.94%
US AIRWAYS	22,339	25,252	13.04%	249,391	225,818	-9.45%	292,227	-8.05%
Mesa (US Airways Express)	0	0	0.00%	140	0	-100.00%	0	-100.00%
SkyWest (US Airways Express)	1,349	1,371	1.63%	15,549	14,464	-6.98%	19,966	1.52%
Charters	821	618	-24.73%	12,600	5,333	-57.67%	7,842	-46.98%
<b>TOTAL DEPLANED PASSENGERS</b>	<b>857,847</b>	<b>894,834</b>	<b>4.31%</b>	<b>7,998,267</b>	<b>8,392,538</b>	<b>4.93%</b>	<b>10,963,946</b>	<b>5.30%</b>
<b>TOTAL PASSENGERS*</b>	<b>1,725,791</b>	<b>1,796,587</b>	<b>4.10%</b>	<b>16,021,683</b>	<b>16,793,757</b>	<b>4.82%</b>	<b>21,913,684</b>	<b>5.19%</b>
<b>INTERNATIONAL - ENPLANED</b>								
DELTA	7,408	15,963	115.48%	75,307	151,857	101.65%	173,310	84.11%
SkyWest (Delta Connection)	5,788	5,408	-6.57%	63,148	41,177	-34.79%	58,184	-26.03%
Compass	0	1,710	100.00%	3,773	23,823	531.41%	25,259	532.74%
FRONTIER	0	0	0.00%	2,540	1,231	-51.54%	2,431	-36.56%
Charters	0	0	0.00%	0	0	0.00%	0	0.00%
<b>TOTAL ENPLANED INTERNATIONAL</b>	<b>13,196</b>	<b>23,081</b>	<b>74.91%</b>	<b>144,768</b>	<b>218,088</b>	<b>50.65%</b>	<b>259,184</b>	<b>43.50%</b>
<b>INTERNATIONAL - DEPLANED</b>								
DELTA	6,986	15,882	127.34%	75,637	159,740	111.19%	180,211	93.09%
SkyWest (Delta Connection)	6,290	5,772	-8.24%	61,754	42,026	-31.95%	57,570	-25.90%
Compass	0	1,235	100.00%	5,959	21,670	263.65%	23,195	277.34%
FRONTIER	0	0	0.00%	2,435	1,255	-48.46%	2,682	-26.12%
Charters	0	0	0.00%	0	1	100.00%	1	100.00%
<b>TOTAL DEPLANED INTERNATIONAL</b>	<b>13,276</b>	<b>22,889</b>	<b>72.41%</b>	<b>145,785</b>	<b>224,692</b>	<b>54.13%</b>	<b>263,659</b>	<b>45.83%</b>
<b>TOTAL INTERNATIONAL PASSENGERS</b>	<b>26,472</b>	<b>45,970</b>	<b>73.66%</b>	<b>290,553</b>	<b>442,780</b>	<b>52.39%</b>	<b>522,843</b>	<b>44.66%</b>

\*Includes International



**SALT LAKE CITY INTERNATIONAL AIRPORT**  
**NINE MONTHS ENDED SEPTEMBER 2015**  
Based on Total Enplanements

<b>MARKET SHARE</b>											
	September 2014	MARKET SHARE	September 2015	MARKET SHARE	YTD 2014	MARKET SHARE	YTD 2015	MARKET SHARE	12 MO ROLLING Ending 09/2014	12 MO ROLLING Ending 09/2015	MARKET SHARE
ALASKA	31,486	3.63%	32,247	3.58%	172,029	2.14%	322,463	3.84%	191,825	410,385	3.75%
AMERICAN	26,255	3.02%	31,929	3.54%	255,496	3.18%	345,397	4.11%	325,357	420,001	3.84%
DELTA	620,606	71.50%	634,155	70.32%	5,739,610	71.54%	5,877,361	69.96%	7,513,965	7,687,466	70.21%
FRONTIER	19,896	2.29%	13,845	1.54%	177,965	2.22%	147,287	1.75%	237,125	220,210	2.01%
JETBLUE	13,487	1.55%	16,723	1.85%	130,617	1.63%	160,293	1.91%	170,054	206,423	1.89%
SOUTHWEST	92,429	10.65%	101,621	11.27%	915,932	11.42%	897,671	10.69%	1,182,691	1,169,572	10.68%
UNITED	37,265	4.29%	43,084	4.78%	351,312	4.38%	399,626	4.76%	445,821	507,793	4.64%
US AIRWAYS	25,707	2.96%	27,866	3.09%	268,653	3.35%	246,931	2.94%	341,488	321,180	2.93%
Charters	813	0.09%	283	0.03%	11,802	0.15%	4,190	0.05%	13,042	6,708	0.06%
<b>TOTAL ENPLANEMENTS</b>	<b>867,944</b>	<b>100%</b>	<b>901,753</b>	<b>100%</b>	<b>8,023,416</b>	<b>100%</b>	<b>8,401,219</b>	<b>100%</b>	<b>10,421,368</b>	<b>10,949,738</b>	<b>100%</b>

<b>PERCENT CHANGE YOY</b>										
	September 2014	September 2015	PERCENT CHANGE	YTD 2014	YTD 2015	PERCENT CHANGE	12 MO ROLLING Ending 09/2014	12 MO ROLLING Ending 09/2015	PERCENT CHANGE	
ALASKA	31,486	32,247	2.42%	172,029	322,463	87.45%	191,825	410,385	113.94%	
AMERICAN	26,255	31,929	21.61%	255,496	345,397	35.19%	325,357	420,001	29.09%	
DELTA	620,606	634,155	2.18%	5,739,610	5,877,361	2.40%	7,513,965	7,687,466	2.31%	
FRONTIER	19,896	13,845	-30.41%	177,965	147,287	-17.24%	237,125	220,210	-7.13%	
JETBLUE	13,487	16,723	23.99%	130,617	160,293	22.72%	170,054	206,423	21.39%	
SOUTHWEST	92,429	101,621	9.94%	915,932	897,671	-1.99%	1,182,691	1,169,572	-1.11%	
UNITED	37,265	43,084	15.62%	351,312	399,626	13.75%	445,821	507,793	13.90%	
US AIRWAYS	25,707	27,866	8.40%	268,653	246,931	-8.09%	341,488	321,180	-5.95%	
Charters	813	283	-65.19%	11,802	4,190	-64.50%	13,042	6,708	-48.57%	
<b>TOTAL ENPLANEMENTS</b>	<b>867,944</b>	<b>901,753</b>	<b>3.90%</b>	<b>8,023,416</b>	<b>8,401,219</b>	<b>4.71%</b>	<b>10,421,368</b>	<b>10,949,738</b>	<b>5.07%</b>	



**SALT LAKE CITY INTERNATIONAL AIRPORT  
LANDING ACTIVITY  
NINE MONTHS ENDED SEPTEMBER 2015**

	September 2014	September 2015	CHANGE	YTD 2014	YTD 2015	CHANGE	12 MO ROLLING Ending 09/2015	% CHANGE
<b>TOTAL NUMBER OF LANDINGS</b>								
<b>SCHEDULED CARRIERS</b>								
ALASKA	211	191	-9.48%	1,134	1,734	52.91%	2,373	80.05%
Horizon Air / Alaska	88	88	0.00%	313	733	134.19%	1,004	220.77%
Skywest / Alaska	90	120	33.33%	337	1,183	251.04%	1,458	332.64%
AMERICAN	150	164	9.33%	1,343	1,920	42.96%	2,356	36.82%
American Eagle/Republic	53	55	3.77%	395	566	43.29%	731	50.41%
American/Mesa Air	0	0	0.00%	0	5	100.00%	18	100.00%
Envoy Air (American)	0	0	0.00%	422	0	-100.00%	0	-100.00%
SkyWest (American)	91	99	8.79%	736	1,109	50.68%	1,375	45.20%
DELTA	3,031	3,123	3.04%	26,396	28,661	8.58%	37,377	8.82%
SkyWest (Delta Connection)	3,909	3,208	-17.93%	36,318	31,142	-14.25%	42,263	-13.26%
Compass (Delta Connection)	191	258	35.08%	2,672	2,031	-23.99%	2,711	-24.92%
FRONTIER	151	94	-37.75%	1,286	1,059	-17.65%	1,602	-6.48%
JETBLUE	98	122	24.49%	929	1,205	29.71%	1,571	29.30%
SOUTHWEST	803	815	1.49%	7,923	7,293	-7.95%	9,685	-8.62%
UNITED	52	130	150.00%	461	1,095	137.53%	1,220	133.27%
Continental (United)	0	0	0.00%	176	0	-100.00%	0	-100.00%
Express Jet (Continental Express)	52	0	-100.00%	494	54	-89.07%	281	-63.12%
Mesa / United Express	0	5	100.00%	0	91	100.00%	91	100.00%
Republic Airways Holdings	0	13	100.00%	51	310	507.84%	348	480.00%
SkyWest (United Express)	452	372	-17.70%	3,650	3,716	1.81%	5,012	4.20%
Shuttle America (United Express)	41	27	-34.15%	622	186	-70.10%	329	-58.25%
US AIRWAYS	194	185	-4.64%	1,865	1,650	-11.53%	2,238	-8.32%
Mesa (US Airways Express)	0	0	0.00%	2	0	-100.00%	0	-100.00%
SkyWest (US Airways)	32	29	-9.38%	339	333	-1.77%	467	8.86%
<b>SUBTOTAL SCHEDULED CARRIERS:</b>	<b>9,689</b>	<b>9,098</b>	<b>-6.10%</b>	<b>87,864</b>	<b>86,076</b>	<b>-2.03%</b>	<b>114,510</b>	<b>-1.25%</b>
<b>CHARTER CARRIERS</b>								
ALLEGIANT AIR	1	3	200.00%	11	8	-27.27%	15	-16.67%
AVANT AIR	0	0	0.00%	0	0	0.00%	0	0.00%
BIGHORN AIRWAYS	2	0	-100.00%	9	6	-33.33%	6	-40.00%
BOMBARDIER BUSINESS JETS	3	13	333.33%	77	94	22.08%	119	20.20%
CITATION SHARES	0	0	0.00%	15	0	-100.00%	0	-100.00%
D&D AVIATION	3	6	100.00%	45	39	-13.33%	45	-28.57%
DELTA PRIVATE JETS	8	7	-12.50%	90	114	26.67%	142	18.33%
EXECUTIVE JET MANAGEMENT	6	3	-50.00%	95	94	-1.05%	121	5.22%
FLIGHT OPTIONS	12	15	25.00%	154	188	22.08%	233	17.68%
KEYLIME AIR	14	13	-7.14%	148	146	-1.35%	205	3.02%
NETJETS	69	74	7.25%	825	838	1.58%	1,048	4.49%
SIERRA PACIFIC	0	0	0.00%	8	3	-62.50%	3	-62.50%
SUNSET AVIATION	1	1	0.00%	33	26	-21.21%	31	-31.11%
SWIFT AIR	0	1	100.00%	4	13	225.00%	15	275.00%
OTHER CHARTER	72	68	-5.56%	895	746	-16.65%	999	-11.12%
<b>SUBTOTAL CHARTER CARRIERS:</b>	<b>191</b>	<b>204</b>	<b>6.81%</b>	<b>2,409</b>	<b>2,315</b>	<b>-3.90%</b>	<b>2,982</b>	<b>-1.62%</b>
<b>CARGO CARRIERS</b>								
ABX AIR (DHL)	0	0	0.00%	2	2	0.00%	5	-44.44%
AERO CHARTER & TRANSPORT	21	21	0.00%	190	190	0.00%	254	0.40%
AIR TRANSPORT INTERNATIONAL	22	23	4.55%	191	198	3.66%	263	4.78%
AIRNET SYSTEMS	0	0	0.00%	7	0	-100.00%	1	-87.50%
AMERIFLIGHT	331	333	0.60%	3,025	3,069	1.45%	4,154	1.76%
CORPORATE AIR (BILLINGS)	100	106	6.00%	928	927	-0.11%	1,244	0.16%
EMPIRE	16	17	6.25%	156	156	0.00%	209	-0.48%
FEDEX EXPRESS	114	129	13.16%	917	1,104	20.39%	1,536	20.19%
UPS	83	93	12.05%	768	825	7.42%	1,146	8.42%
WESTERN AIR EXPRESS	41	24	-41.46%	540	255	-52.78%	390	-46.13%
OTHER CARGO	2	0	-100.00%	13	18	38.46%	25	25.00%
<b>SUBTOTAL CARGO CARRIERS:</b>	<b>730</b>	<b>746</b>	<b>2.19%</b>	<b>6,737</b>	<b>6,744</b>	<b>0.10%</b>	<b>9,227</b>	<b>1.02%</b>
<b>TOTAL LANDINGS</b>	<b>10,610</b>	<b>10,048</b>	<b>-5.30%</b>	<b>97,010</b>	<b>95,135</b>	<b>-1.93%</b>	<b>126,719</b>	<b>-1.10%</b>
<b>TOTAL LANDING WEIGHT</b>								
<b>SCHEDULED CARRIERS</b>								
ALASKA	30,165,200	26,741,100	-11.35%	159,333,300	233,695,100	46.67%	320,392,400	72.73%
Horizon Air / Alaska	5,434,000	5,434,000	0.00%	19,327,750	45,262,750	134.19%	61,997,000	220.77%
Skywest / Alaska	6,030,000	8,517,420	41.25%	22,459,000	79,681,217	254.79%	98,086,217	336.73%
AMERICAN	18,817,500	23,399,500	24.35%	169,809,900	262,120,900	54.36%	316,830,400	45.63%
American Eagle/Republic	3,972,721	4,122,250	3.76%	29,608,015	42,424,864	43.29%	54,792,769	50.41%
Envoy Air (American)	0	0	0.00%	28,274,000	0	-100.00%	0	-100.00%
American/Mesa Air	0	0	0.00%	0	367,500	100.00%	1,323,000	100.00%
SkyWest (American)	4,277,000	4,653,000	8.79%	34,592,000	52,123,000	50.68%	64,625,000	45.20%
DELTA	483,222,700	500,983,400	3.68%	4,254,613,900	4,567,531,245	7.35%	5,979,700,145	7.97%
SkyWest (Delta Connection)	219,707,600	187,797,800	-14.52%	2,029,149,900	1,828,766,000	-9.88%	2,466,840,300	-9.71%
Compass (Delta Connection)	14,358,807	19,384,202	35.00%	200,815,974	152,567,054	-24.03%	203,687,414	-24.95%
FRONTIER	20,445,404	13,091,172	-35.97%	177,286,514	146,592,166	-17.31%	221,058,072	-6.61%
JETBLUE	13,964,724	17,348,400	24.23%	132,132,528	171,380,318	29.70%	223,425,518	29.30%



**SALT LAKE CITY INTERNATIONAL AIRPORT  
LANDING ACTIVITY  
NINE MONTHS ENDED SEPTEMBER 2015**

	September 2014	September 2015	CHANGE	YTD 2014	YTD 2015	CHANGE	12 MO ROLLING Ending 09/2015	% CHANGE
<b>SOUTHWEST</b>	101,708,000	102,840,000	1.11%	998,044,000	928,858,000	-6.93%	1,234,250,000	-7.18%
<b>UNITED</b>	7,439,984	18,457,620	148.09%	66,445,984	154,824,858	133.01%	172,811,566	130.21%
Continental (United)	0	0	0.00%	25,067,900	0	-100.00%	0	-100.00%
Express Jet (Continental Express)	2,292,784	0	-100.00%	21,780,566	2,380,968	-89.07%	12,389,852	-64.92%
Mesa / United Express	0	375,000	100.00%	0	6,822,463	100.00%	6,822,463	100.00%
Republic Airways Holdings	0	806,000	100.00%	3,162,000	19,220,000	507.84%	21,576,000	480.00%
SkyWest (United Express)	25,670,400	23,459,485	-8.61%	210,348,509	229,233,662	8.98%	305,860,344	10.70%
Shuttle America (United Express)	2,964,792	1,952,424	-34.15%	44,978,064	13,450,032	-70.10%	23,790,648	-58.25%
<b>US AIRWAYS</b>	30,256,500	29,559,100	-2.30%	282,613,800	264,605,400	-6.37%	356,815,400	-1.84%
Mesa (US Airways Express)	0	0	0.00%	147,000	0	-100.00%	0	-100.00%
SkyWest (US Airways)	1,504,000	1,389,500	-7.61%	15,959,500	15,677,500	-1.77%	21,975,500	8.85%
<b>SUBTOTAL SCHEDULED CARRIERS:</b>	<b>992,232,116</b>	<b>990,311,373</b>	<b>-0.19%</b>	<b>8,925,950,104</b>	<b>9,217,584,997</b>	<b>3.27%</b>	<b>12,169,050,008</b>	<b>3.93%</b>
<b>CHARTER CARRIERS</b>								
ALLEGiant AIR	139,500	418,500	200.00%	1,534,500	1,175,000	-23.43%	2,151,500	-14.32%
AVANT AIR	0	0	0.00%	0	0	0.00%	0	0.00%
BIGHORN AIRWAYS	0	0	0.00%	79,680	53,120	-33.33%	53,120	-39.83%
BUSINESS JET SOLUTIONS	134,000	0	-100.00%	2,186,250	935,550	-57.21%	1,663,350	-44.40%
CITATION SHARES	0	0	0.00%	347,700	0	-100.00%	0	-100.00%
D&D AVIATION	45,900	91,800	100.00%	688,500	586,520	-14.81%	678,320	-29.63%
DELTA PRIVATE JETS	210,800	248,700	17.98%	2,595,470	3,014,935	16.16%	3,787,255	10.53%
EXECUTIVE JET MANAGEMENT	209,985	132,400	-36.95%	4,118,750	4,094,265	-0.59%	5,074,915	4.08%
FLIGHT OPTIONS	303,820	324,155	6.69%	3,600,755	4,386,570	21.82%	5,549,280	19.30%
KEYLIME AIR	396,696	350,740	-11.58%	4,218,713	4,147,066	-1.70%	5,790,430	1.58%
NETJETS	1,686,760	1,914,280	13.49%	20,678,980	21,842,305	5.63%	26,947,525	7.24%
SIERRA PACIFIC	0	0	0.00%	850,000	311,000	-63.41%	311,000	-63.41%
SUN COUNTRY	0	0	0.00%	1,152,700	0	-100.00%	292,600	-77.47%
SWIFT AIR	0	0	0.00%	484,000	1,171,925	142.13%	1,413,925	192.13%
OTHER CHARTER	1,983,474	2,071,543	4.44%	29,256,938	22,158,457	-24.26%	29,168,359	-19.74%
<b>SUBTOTAL CHARTER CARRIERS:</b>	<b>5,110,935</b>	<b>5,552,118</b>	<b>8.63%</b>	<b>71,792,936</b>	<b>63,876,713</b>	<b>-11.03%</b>	<b>82,881,579</b>	<b>-7.77%</b>
<b>CARGO CARRIERS</b>								
ABX AIR (DHL)	0	0	0.00%	555,000	544,000	-1.98%	1,425,000	-13.85%
AERO CHARTER & TRANSPORT	143,850	143,850	0.00%	1,304,570	1,301,500	-0.24%	1,739,900	0.22%
AIR TRANSPORT INTERNATIONAL	4,356,000	4,862,000	11.62%	38,005,000	42,868,000	12.80%	56,078,000	12.40%
AIRNET SYSTEMS	0	0	0.00%	107,100	0	-100.00%	15,300	-87.50%
AMERIFLIGHT	4,231,000	4,364,000	3.14%	39,177,994	40,033,400	2.18%	54,072,400	2.33%
CORPORATE AIR (BILLINGS)	850,000	901,000	6.00%	7,888,000	7,879,500	-0.11%	10,574,000	0.16%
EMPIRE	578,480	614,635	6.25%	5,585,040	5,640,180	0.99%	7,528,740	0.99%
FEDEX EXPRESS	41,020,300	41,885,300	2.11%	353,660,700	365,867,100	3.45%	513,730,700	5.71%
UPS	25,721,680	28,457,200	10.64%	240,101,440	253,690,480	5.66%	355,039,160	6.82%
WESTERN AIR EXPRESS	301,300	302,500	0.40%	4,353,875	2,210,900	-49.22%	3,679,000	-36.38%
OTHER CARGO	30,600	0	-100.00%	523,434	2,453,934	368.81%	2,901,454	152.44%
<b>SUBTOTAL CARGO CARRIERS:</b>	<b>77,233,210</b>	<b>81,530,485</b>	<b>5.56%</b>	<b>691,262,153</b>	<b>722,488,994</b>	<b>4.52%</b>	<b>1,006,783,654</b>	<b>6.03%</b>
<b>TOTAL LANDINGS</b>	<b>1,074,576,261</b>	<b>1,077,393,976</b>	<b>0.26%</b>	<b>9,689,005,193</b>	<b>10,003,950,704</b>	<b>3.25%</b>	<b>13,258,715,241</b>	<b>4.00%</b>

**SALT LAKE CITY INTERNATIONAL AIRPORT  
CARGO ACTIVITY REPORT  
NINE MONTHS ENDED SEPTEMBER 2015**

	September 2014	September 2015	CHANGE	YTD 2014	YTD 2015	CHANGE	12 MO ROLLING Ending 09/2015	% CHANGE
<b>ENPLANED CARGO</b>								
<b>PASSENGER CARRIERS</b>								
ALASKA	14,448	9,869	-31.69%	118,076	134,019	13.50%	184,650	20.20%
Horizon Air / Alaska	25	52	108.00%	98	2,456	2406.12%	4,165	4150.00%
Skywest / Alaska	1,364	897	-34.24%	3,744	4,801	28.23%	7,647	104.25%
AMERICAN	1,492	36,280	2331.64%	5,904	126,066	2035.26%	143,120	1275.62%
American Eagle/Republic	0	0	0.00%	300	420	40.00%	638	36.62%
Envoy Air (American)	0	0	0.00%	2,961	0	-100.00%	0	-100.00%
SkyWest (American)	0	0	0.00%	215	175	-18.60%	175	-55.36%
DELTA	949,152	768,280	-19.06%	8,778,868	8,044,316	-8.37%	11,401,178	-3.87%
SkyWest (Delta Connection)	0	0	0.00%	0	0	0.00%	0	0.00%
Mesaba Airlines (Delta Connection)	0	0	0.00%	0	0	0.00%	0	0.00%
Compass (Delta Connection)	0	0	0.00%	0	0	0.00%	0	0.00%
FRONTIER	0	0	0.00%	0	0	0.00%	0	0.00%
SOUTHWEST	278,979	469,475	68.28%	2,322,170	3,002,572	29.30%	3,920,712	20.52%
UNITED	2,069	6,212	200.24%	54,592	48,073	-11.94%	61,523	-14.57%
Continental (United)	0	0	0.00%	15,058	0	-100.00%	0	-100.00%
Express Jet (Continental Express)	0	0	0.00%	0	0	0.00%	0	0.00%
SkyWest (Continental Express)	0	0	0.00%	0	0	0.00%	0	0.00%
US AIRWAYS	18,953	16,285	-14.08%	157,630	146,709	-6.93%	198,786	-5.60%
Mesa (US Airways Express)	0	0	0.00%	0	0	0.00%	0	0.00%
SkyWest (US Airways)	0	0	0.00%	20	271	1255.00%	1,082	5310.00%
Others	0	0	0.00%	0	50	100.00%	50	100.00%
<b>CARGO CARRIERS</b>								
ABX AIR (DHL)	0	0	0.00%	37,465	20,655	-44.87%	69,519	-20.73%
ASTAR (DHL)	0	0	0.00%	0	0	0.00%	0	0.00%
CAPITOL CARGO INT'L (DHL)	0	0	0.00%	0	0	0.00%	0	0.00%
FEDEX EXPRESS*	7,556,456	7,980,250	5.61%	69,960,554	67,306,185	-3.79%	90,860,530	-4.06%
UPS	3,692,136	3,688,942	-0.09%	32,171,343	32,647,703	1.48%	45,884,851	3.86%
MISC CARGO	1,235,909	1,419,225	14.83%	10,212,191	10,992,025	7.64%	14,687,937	8.15%
<b>TOTAL ENPLANED CARGO</b>	<b>13,750,983</b>	<b>14,395,767</b>	<b>4.69%</b>	<b>123,841,189</b>	<b>122,476,496</b>	<b>-1.10%</b>	<b>167,426,563</b>	<b>-0.43%</b>
<b>DEPLANED CARGO</b>								
<b>PASSENGER CARRIERS</b>								
ALASKA	14,536	21,538	48.17%	143,135	209,965	46.69%	267,569	66.17%
Horizon Air / Alaska	1,807	11	-99.39%	3,544	10,092	184.76%	12,797	261.09%
Skywest / Alaska	177	2,053	1059.89%	860	16,240	1788.37%	18,100	2004.65%
AMERICAN	2,123	27,324	1187.05%	36,930	133,532	261.58%	157,201	325.32%
American Eagle/Republic	377	358	-5.04%	3,204	3,571	11.45%	6,021	74.78%
Envoy Air (American)	0	0	0.00%	228	0	-100.00%	0	-100.00%
SkyWest (American)	0	228	100.00%	89	738	729.21%	738	729.21%
DELTA	1,170,038	1,258,709	7.58%	9,696,412	10,622,496	9.55%	13,807,923	3.57%
SkyWest (Delta Connection)	0	0	0.00%	0	0	0.00%	0	0.00%
Mesaba Airlines (Delta Connection)	0	0	0.00%	0	0	0.00%	0	0.00%
Compass (Delta Connection)	0	0	0.00%	0	0	0.00%	0	0.00%
FRONTIER	0	0	0.00%	0	0	0.00%	0	0.00%
SOUTHWEST	542,533	459,960	-15.22%	4,286,504	4,075,458	-4.92%	5,683,280	-0.98%
UNITED	17,498	16,589	-5.19%	109,558	156,488	42.84%	199,349	27.20%
Continental (United)	0	0	0.00%	36,863	0	-100.00%	0	-100.00%
Express Jet (Continental Express)	0	0	0.00%	0	0	0.00%	0	0.00%
SkyWest (Continental Express)	0	0	0.00%	0	0	0.00%	0	0.00%
US AIRWAYS	21,249	7,961	-62.53%	241,615	124,895	-48.31%	162,822	-47.20%
Mesa (US Airways Express)	0	0	0.00%	0	0	0.00%	0	0.00%
Skywest (US Airways)	555	0	-100.00%	2,010	2,697	34.18%	3,948	39.70%
KITTY HAWK CHARTERS	0	0	0.00%	0	0	0.00%	0	0.00%
Others	0	50	100.00%	0	50	100.00%	50	100.00%
<b>CARGO CARRIERS</b>								
ABX AIR (DHL)	0	0	0.00%	76,765	46,096	-39.95%	81,851	-62.67%
ASTAR (DHL)	0	0	0.00%	0	0	0.00%	0	0.00%
CAPITOL CARGO INT'L (DHL)	0	0	0.00%	0	0	0.00%	0	0.00%
FEDEX EXPRESS*	5,728,341	6,829,830	19.23%	51,885,891	56,506,134	8.90%	76,137,386	8.72%
UPS	4,840,238	4,844,656	0.09%	42,785,236	43,369,534	1.37%	59,510,272	1.61%
MISC CARGO	870,584	978,153	12.36%	7,065,403	8,322,218	17.79%	10,996,426	17.32%
<b>TOTAL DEPLANED CARGO</b>	<b>13,210,056</b>	<b>14,447,420</b>	<b>9.37%</b>	<b>116,374,247</b>	<b>123,600,204</b>	<b>6.21%</b>	<b>167,045,733</b>	<b>5.74%</b>
<b>TOTAL CARGO</b>	<b>26,961,039</b>	<b>28,843,187</b>	<b>6.98%</b>	<b>240,215,436</b>	<b>246,076,700</b>	<b>2.44%</b>	<b>334,472,296</b>	<b>2.56%</b>

\*FEDEX EXPRESS includes mail





Salt Lake City  
Department of Airports

COMPARISON OF ON TIME OPERATIONS  
August 2015

ARRIVALS

Airport	Flights	% On Time	Rank
SLC SALT LAKE CITY INTL	9,502	87.1	1
ATL HARTSFIELD-JACKSON ATLANTA INTL	33,725	84.0	2
PDX PORTLAND INTL	5,103	84.0	3
DFW DALLAS-FT. WORTH REGIONAL	22,297	83.9	4
DTW DETROIT METRO WAYNE CNTY	10,231	83.9	5
MSP MINNEAPOLIS-ST. PAUL INTL	11,625	83.2	6
STL ST. LOUIS LAMBERT INTL	4,454	83.2	7
MDW CHICAGO MIDWAY	7,928	82.8	8
PHX PHOENIX SKY HARBOR INTL	13,704	82.4	9
CLT CHARLOTTE DOUGLAS	9,263	82.3	10
DEN DENVER INTL	18,871	81.6	11
IAH HOUSTON GEORGE BUSH	13,427	81.4	12
SAN SAN DIEGO LINDBERGH FIELD	6,876	81.4	13
IAD WASHINGTON DULLES	3,228	81.2	14
LAS LAS VEGAS MCCARRAN INTL	12,701	80.6	15
JFK NEW YORK JFK INTL	9,196	80.3	16
CVG CINCINNATI NORTHERN INT. KY	1,961	80.1	17
DCA RONALD REAGAN NATIONAL	6,988	80.1	18
PHL PHILADELPHIA INTL	6,416	79.7	19
BWI BALTIMORE/WASHINGTON INTL	8,340	79.1	20
ORD CHICAGO O HARE	28,128	79.0	21
SEA SEATTLE-TACOMA INTL	12,092	78.6	22
EWR NEWARK LIBERTY INTERNATIONAL	9,645	77.5	23
SFO SAN FRANCISCO INTL	14,605	77.2	24
LGA NEW YORK LAGUARDIA	9,243	76.6	25
BOS BOSTON LOGAN INTL	10,728	76.5	26
TPA TAMPA INTL	5,432	76.3	27
MIA MIAMI INTL	6,329	76.0	28
LAX LOS ANGELES INTL	19,270	74.0	29
FLL FT. LAUDERDALE	6,117	73.9	30
MCO ORLANDO INTL	9,667	73.3	31
<b>AVERAGES</b>	<b>11,197</b>	<b>80.04</b>	

DEPARTURES

Airport	Flights	% On Time	Rank
SLC SALT LAKE CITY INTL	9,500	86.5	1
PDX PORTLAND INTERNATIONAL	5,105	86.3	2
MSP MINNEAPOLIS-ST. PAUL INTL	11,622	86.0	3
CVG CINCINNATI NORTHERN INT. KY	1,962	84.4	4
DTW DETROIT METRO WAYNE CNTY	10,237	84.4	5
STL ST. LOUIS LAMBERT INTL	4,457	82.9	6
DCA RONALD REAGAN NATIONAL	6,988	82.5	7
SAN SAN DIEGO LINDBERGH FIELD	6,877	81.7	8
PHL PHILADELPHIA INTL	6,415	80.6	9
ATL HARTSFIELD-JACKSON ATLANTA INTL	33,707	80.5	10
DFW DALLAS-FT. WORTH REGIONAL	22,298	80.3	11
SEA SEATTLE-TACOMA INTL	12,082	79.9	12
DEN DENVER INTERNATIONAL	18,866	79.7	13
BOS BOSTON LOGAN INTERNATIONAL	10,727	79.5	14
JFK NEW YORK JFK INTL	9,198	79.5	15
IAD WASHINGTON DULLES	3,236	79.4	16
PHX PHOENIX SKY HARBOR INTL	13,703	79.1	17
IAH HOUSTON GEORGE BUSH	13,419	78.1	18
CLT CHARLOTTE DOUGLAS	9,262	78.0	19
SFO SAN FRANCISCO INTL	14,590	78.0	20
LGA NEW YORK LAGUARDIA	9,241	77.4	21
LAS LAS VEGAS MCCARRAN INTL	12,698	76.7	22
TPA TAMPA INTERNATIONAL	5,431	76.5	23
LAX LOS ANGELES INTL	19,265	76.2	24
ORD CHICAGO O HARE	28,149	75.9	25
MDW CHICAGO MIDWAY	7,928	74.9	26
EWR NEWARK LIBERTY INTERNATIONAL	9,612	74.8	27
FLL FT. LAUDERDALE	6,121	74.7	28
BWI BALTIMORE/WASHINGTON INTL	8,338	72.0	29
MCO ORLANDO INTL	9,666	71.6	30
MIA MIAMI INTL	6,328	71.3	31
<b>AVERAGES</b>	<b>11,194</b>	<b>79.01</b>	

ON TIME ARRIVAL PERFORMANCE AT SLC

By Carrier

Air Carrier	Flights	% On Time
XE EXPRESS JET	5	100.0%
DL DELTA	3,487	89.1%
OO SKYWEST	4,183	88.2%
UA UNITED	124	87.1%
AS ALASKA	217	86.2%
AA AMERICAN	419	80.2%
WN SOUTHWEST	851	80.1%
F9 FRONTIER	92	78.3%
B6 JETBLUE	124	73.4%
<b>AVERAGES</b>	<b>9,502</b>	<b>87.1%</b>

Source: DOT Air Travel Consumer Report

# **DESIGN AND CONSTRUCTION REPORT**

## TABLE OF CONTENTS

- I. Area Map of Project Locations
- II. Project Schedule
- III. Construction Analysis
- IV. Design and Construction Report





Salt Lake City  
International Airport

### 2015 - 2016 Project Legend

#### Airfield

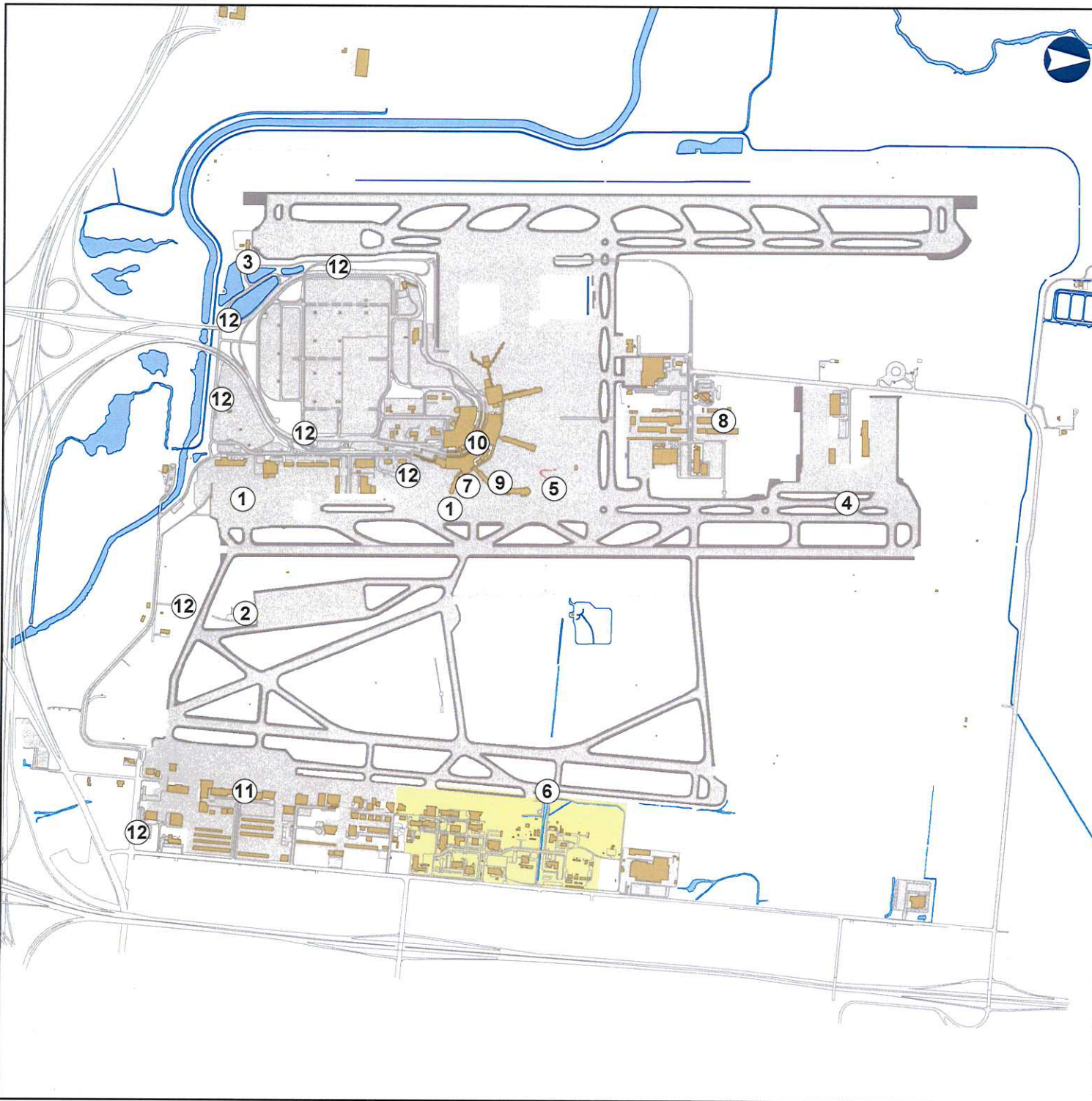
- 1. Deicing Pad 34R
- 2. T/W L Deicing Pad Support Facility
- 3. R/W 34L Deicing Pad Support Facility
- 4. Deicing Pad R/W 16L
- 5. Apron Mast Lighting
- 6. Rebuild Pump House 6
- 7. Concourse B Apron PCC Joint Seal Replacement
- 8. Snow Chemical Storage Building

#### Terminal

- 9. Public Restroom Renovation-Concourse B
- 10. Replace Boiler No. 4
- 11. Relocate IT Node at Executive Terminal

#### Landside

- 12. Asphalt Overlay Program Phase IX



SALT LAKE CITY INTERNATIONAL AIRPORT  
CONSTRUCTION PROGRAM  
2015/2016 Construction Schedule

ID	Task Name	Start	Finish												
				Jun '15	Jul '15	Aug '15	Sep '15	Oct '15	Nov '15	Dec '15	Jan '16	Feb '16	Mar '16		
<b>1</b>	<b>Airfield</b>	<b>Thu 10/18/12</b>	<b>Mon 6/6/16</b>												
2	(1) Deicing Pad 34R	Thu 10/18/12	Mon 11/23/15												
3	(2) T/W L Deicing Pad Support Facility	Mon 7/15/13	Fri 11/20/15												
4	(3) R/W 34L Deicing Pad Support Facility	Mon 7/15/13	Fri 11/20/15												
5	(4) Deicing Pad R/W 16L	Mon 10/6/14	Mon 6/6/16												
6	(5) Apron Mast Lighting	Thu 3/26/15	Thu 12/24/15												
7	(6) Rebuild Pump House 6	Wed 7/8/15	Fri 12/4/15												
8	(7) Concourse B Apron PCC Joint Seal Replacement	Mon 7/27/15	Wed 11/18/15												
9	(8) Snow Chemical Storage Building	Mon 6/8/15	Tue 2/9/16												
<b>10</b>	<b>Terminal</b>	<b>Mon 3/23/15</b>	<b>Mon 1/25/16</b>												
11	(9) Public Restroom Renovation - Concourse B	Mon 3/23/15	Fri 11/27/15												
12	(10) Replace Boiler No. 4	Mon 7/27/15	Mon 1/25/16												
13	(11) Relocate IT Node at the Executive Terminal	Tue 10/6/15	Mon 12/14/15												
<b>14</b>	<b>Landside</b>	<b>Mon 5/4/15</b>	<b>Thu 10/29/15</b>												
15	(12) Asphalt Overlay Program - Phase IX	Mon 5/4/15	Thu 10/29/15												

Date: Mon 11/9/15

Design  
Construction

DESIGN



SCOPING



Deadline



CONSTRUCTION



SUMMARY





**SALT LAKE CITY DEPARTMENT OF AIRPORTS  
CONSTRUCTION PROJECT STATUS 2015 - 2016**

#	PROJECT NAME	ENGINEER'S ESTIMATE	BID AMOUNT	APPROVED CHANGE ORDERS TO DATE	% OF COST INCREASE TO DATE	STATUS	CONTRACTOR
<b>CONSTRUCTION</b>							
1	Deicing Pad 34R	\$ 32,636,278	\$ 30,713,449	\$ 1,837,115	5.98%	behind schedule	Wadsworth Brothers Const.
2	T/W L Deicing Pad Support Facility	\$ 6,747,000	\$ 6,755,375	\$ (81,674)	-1.21%	on schedule	Allstate Construction
3	R/W 34L Deicing Pad Support Facility	\$ 6,788,000	\$ 6,680,375	\$ 40,538	0.61%	on schedule	Allstate Construction
4	Deicing Pad R/W 16L	\$ 27,398,981	\$ 29,645,774	\$ 10,141.00	0.03%	on schedule	Granite Construction
5	Apron Mast Lighting Replacement	\$ 1,733,033	\$ 1,733,300			on schedule	All-Tech Electric
6	Rebuild Pump House 6	\$ 404,300	\$ 448,933			on schedule	JL Hardy Construction
7	Concourse B Apron PCC Joint Seal Replacement	\$ 1,240,425	\$ 1,151,070			on schedule	Granite Construction
8	Snow Chemical Storage Building	\$ 1,702,371	\$ 1,933,000			on schedule	Stacey Enterprises
9	Public Restroom Renovation - Concourse B	\$ 1,116,251	\$ 1,073,800	\$ 11,376.00	1.06%	on schedule	Hogan & Associates
10	Replace Boiler No. 4	\$ 634,435	\$ 608,000			on schedule	Mechanical Service & Systems
11	Relocate IT Node at the Executive Terminal	\$ 1,326,725	\$ 1,179,893			on schedule	Americom Technology
12	Asphalt Overlay Program - Phase IX	\$ 658,264	\$ 564,722			complete	Staker Parson Companies
	<b>Total</b>	<b>\$ 82,386,063</b>	<b>\$ 82,487,691</b>	<b>\$ 1,817,496</b>	<b>2.20%</b>		
Budget amount, Engineer's estimate, and Bid amount is based on construction cost only.							

## DESIGN AND CONSTRUCTION REPORT

### CONSTRUCTION

- (1) **Deicing Pad 34R** - The Contractor has completed all concrete and asphalt paving for the project. Minor electrical work, storm drain and glycol system cleaning and diversion vault work is on-going.
- (2) **Taxiway L Deicing Pad Support Facility** - The Contractor is currently working on punch list items.
- (3) **Runway 34L Deicing Pad Support Facility** - The Contractor is currently working on punch list items.
- (4) **Deicing Pad R/W 16L** - The Contractor has completed the PCC and asphalt shoulder placements for Phase 1D, Taxiway G and is currently working on miscellaneous electrical work throughout the project. The electrical work will continue as long as weather permits. No other work is anticipated to take place until March of 2016.
- (5) **Apron Mast Lighting Replacement** - The light poles are being erected at Concourse A, C and D. Lighting controls are being installed at Concourse A and B.
- (6) **Rebuild Pump House 6** - The Airport has approved submittals for the pumps, railing, structural steel, roofing material and masonry. The directional boring for the new power feeder is complete.
- (7) **Concourse B Apron PCC Joint Seal Replacement** - This project consists of seven phases. The Contractor has completed Phases 1 - 6 and is currently working on the last phase.
- (8) **Snow Chemical Storage Building** - The Contractor has completed the foundations. The interior cast in place concrete bin walls are being poured and the masonry wall work has started.
- (9) **Public Restroom Renovation - Concourse B** - The Contractor has started the demolition of the men's restroom. Removal of the existing concrete slab will begin next week. Underground plumbing work will follow after the slab removal.
- (10) **Replace Boiler No. 4** - The Contractor has started the demolition of the old boiler. This phase of the work will take approximately 3 weeks to complete.
- (11) **Relocate IT Node at the Executive Terminal** - The Contractor is installing new communication vaults and underground conduits between the existing and new vaults and installing pull tape and microducts in the empty conduits throughout the east side of the Airport campus. Conduits and new fiber are currently being pulled to the east side gates and cameras from the existing Terminal Services Building. The new IT node building is on order and expected to ship the week of November 13, 2015.
- (12) **Asphalt Overlay Program Phase IX** - Substantial completion for this project was issued on October 29, 2015. All punch list items are complete.