

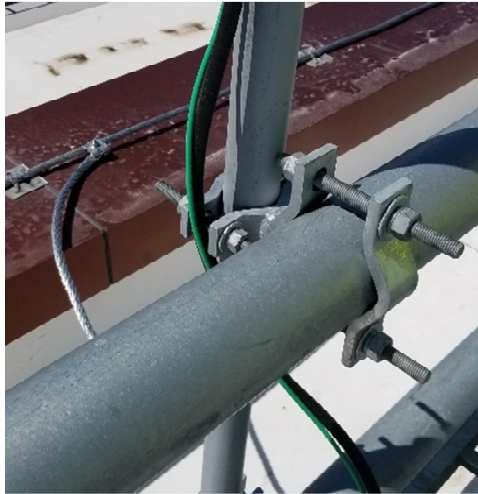
Salt Lake City International Airport

Tenant Radio Installation Guidelines

The following is intended to serve as a guideline for tenants when installing antennas on the new antenna mounting areas (antenna farms) of the new A & B Concourses at Salt Lake International Airport. The purpose for these guidelines is to ensure a uniform and orderly installation environment, ensure proper grounding, bonding and lightning protection is maintained and allow for easy identification of antennas and antenna cables.

1. Antenna Mounting

- a. Antennas shall be mounted by securing vertical antenna mounting pipes to the two horizontal members of the antenna mounting rails using pipe to pipe cross-over clamps.



- b. Valmont Site Pro 1 part number DSCK or equivalent shall be used for the cross-over clamp. Two clamps will be needed per antenna mast.
- c. Vertical mounting pipe shall be galvanized steel. Recommended diameter is 2-3/8", and should be at least 5' long. Valmont Site Pro 1 part number P263 or equivalent.

2. Antenna Cable Routing

- a. Antenna cable shall be routed in the provided roof top cable tray. At the antenna location, the cable shall be routed through the bottom of the tray in order to allow for the installation of the cable tray cover on top of the tray.



3. Antenna Cable Ground Kits

- a. Antenna cable ground kits shall be installed near the roof top entry hoods. Kits shall be bonded to the exterior busbar using #6AWG wire.



- b. Antenna cable ground kits shall be Andrew SureGround grounding kit or equivalent.

4. Lightning Surge Arrestors

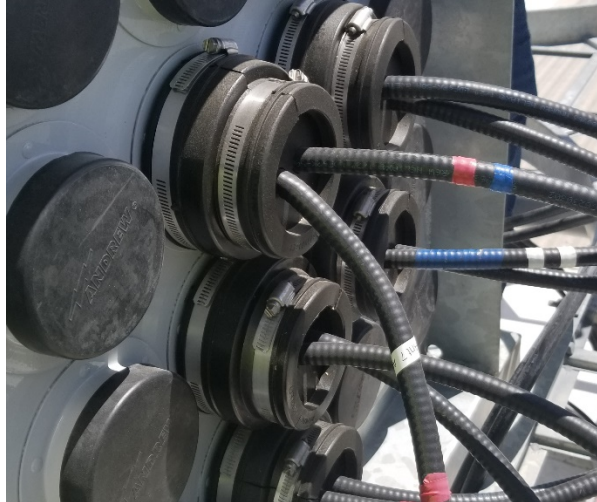
- a. Lightning Surge Arrestors shall be installed on all antenna cables, in-line, inside the roof entry hoods. The arrestors shall be mounted directly to the ground busbar inside the hood.



- b. Lightning surge arrestors shall be Polyphasor IS-50 series or equivalent.

5. Entry Hood Cable Boots

- a. Weatherproof boots shall be used on the roof entry hood cable ports.
- b. Each tenant shall utilize its own entry port(s). However, each tenant shall minimize the number of entry ports used to the least number possible.



- c. Boot assemblies shall be Commscope 4" Boot Assembly (p/n 294573) with the appropriate Commscope boot insert for the required number and size of holes to match the number and size of cables.

6. Antenna Cable Tags

- a. Antenna cables shall be labeled with phenolic tags fastened to cables. Tags shall be 1" x 3" with a 1/8" hole in the bottom left corner for attachment of a cable tie. Tags shall be attached to antenna cables using UV resistant cable ties. Tag label information shall be engraved and shall contain the name of the owner and the frequency band.
- b. Place tags on cable at cable entry hood and at antenna.
- c. The above antenna cable marking is the minimum required. Markings on antenna cables in addition to that listed above is acceptable (such as adding antenna numbers or using color coded tape).