

DEPARTMENT OF AIRPORTS
BOARD MEETING

20 February 2019

AGENDA



Salt Lake City
Department of Airports

**SALT LAKE CITY DEPARTMENT OF AIRPORTS
BOARD MEETING AGENDA**

20 February 2019
8:00 A.M.

CONSENT AGENDA

- A. Minutes of the 16 January 2019 Meeting

DISCUSSION ITEMS

- B. Director's Report – Bill Wyatt, Executive Director, SLCDA
- C. Airport Redevelopment Program (ARP) Update – Mike Williams, ARP Director, SLCDA
- D. Wildlife Management Update – Candace Deavila, Wildlife Manager, SLCDA and Bobby Boswell, Biologist, USDA
- E. Concession Program RFP Update - John Buckner, Commercial & Administration Director, SLCDA

INFORMATION ITEMS

- A. Financial Report – December 2018
- B. Air Traffic Statistics – December 2018
- C. Construction Report – February 2019
- D. Media Clippings – February 2019

The next meeting will be held on **Wednesday, March 20, 2019**, at 8:00 a.m. Meetings are held in the Board Room located on the third level of the short-term parking garage. People with disabilities may make requests for reasonable accommodations no later than 48 hours in advance in order to attend this [Airport Board Meeting](#). Accommodations may include alternate formats, interpreters, and other auxiliary aids. This is an accessible facility. For questions or additional information, please contact [LuJean Christensen](#) at [801-575-2096](tel:801-575-2096).

DEPARTMENT OF AIRPORTS
BOARD MEETING

20 February 2019

MINUTES

SALT LAKE CITY DEPARTMENT OF AIRPORTS MINUTES OF ADVISORY BOARD MEETING

January 16, 2019

Members Present: Larry Pinnock, Chair
Arlyn Bradshaw
Wade Bitner
Roger Boyer
Theresa Foxley
J.T. Martin
Karen Mayne
Cyndy Miller
Steve Price
Jim Riding

Mayor's Office: Patrick Leary

City Council Office: James Rogers
Russell Weeks

Department of Airports: Bill Wyatt, Executive Director
Treber Andersen, Operations Superintendent
John Buckner, Director of Administration & Commercial Services
Brian Butler, Finance Controller
Ed Cherry, Chief Information Officer
LuJean Christensen, Administrative Assistant
Medardo Gomez, Maintenance Superintendent
Brady Fredrickson, Director of Planning & Environmental
Marco Kunz, Attorney
Kevin Robins, Director of Engineering
Al Stuart, Operations Superintendent
Nancy Volmer, Director of Public Relations
Mike Williams, ARP Program Director

Larry Pinnock called the meeting to order at 8:00 am.

AGENDA

A. Minutes

The motion was made by Karen Mayne and seconded by Wade Bitner to approve the minutes of November 14, 2018 with the correction of Ryan Tesch, Director of Finance. All votes were affirmative; motion passed.

AGENDA

B. Director's Report

Bill Wyatt, Executive Director, updated the Airport Advisory Board regarding current events.

- Wyatt updated the Board on the status of the furloughed government employees and the impact to the Airport. Currently the Airport has not been affected but that may change the longer the employees are furloughed. The Airport and Airport community are looking at ways that we can legally help to alleviate some of the stress. Several of the concessionaires are providing meals and the Airport will be sponsoring a BBQ today. Airlines are alleviating staff pressure by taking on roles that aren't specifically security relative. Several of you have reached out to see how you can help. It's complicated for a couple of reasons, 1) the nature of federal employment and the ability of federal employees to work outside their assigned role and 2) normally during situations like this a call would be placed to TSA headquarter but currently there is nobody to talk to. Items like prepaid gas and food cards are appropriate. Mayor Biskupski is exploring the idea of low or no interest loans. We are going to do everything we can to help relieve the extraordinary pressure that is being applied to a work force without which we cannot operate the airport.
- Wyatt stated that the Airport continues to experience high passenger volumes.
- Wyatt informed the Board that the Airport Redevelopment Program is on time and on budget.
- Currently the Airport is going through the budget process. The budget will be increasing as preparations are being made to operate in the new facility. Added FTE's and equipment will impact and increase the budget.

Pinnock stated that other airports are having to consolidate and shut down terminals as a result of the government shutdown. Pinnock wondered if there was any indication that Salt Lake City would need to take this measure. Wyatt answered that it depends on a couple factors. The first factor is there something that is driving people to call in sick or leave early. The second factor is how the airport is designed. Salt Lake City fundamentally has three checkpoints. Two of the checkpoints are large. Over the next couple of weeks the Airport will struggle. The uncertainty of not knowing how long the furlough will last will drive people away.

Mark Lewis stated that they are extremely grateful with the partnerships that we have with the stakeholders here at the Airport. We have had many meals provided by carriers, passengers, members of the community and the Airport. We are starting a food pantry to which employees who are struggling can access. The attitudes are good now but the employees are running out of resources. They are dedicated but at some point they have to feed their families and take care of themselves. Mayne commented that the furloughed employees are financial hostages and we need to do everything we can to help. Mayne encouraged the Board members to use every network they could to help. James Rogers suggested that Mayne check with the state to see what they are doing or could do. Rogers informed the Board that the Mayor is looking at the option of low interest loans and wondered if the State was looking is at options like this. Mayne answered that she would check into it.

Discussion ensued on options to help the furloughed government employees.

C. Airport Redevelopment Program (ARP) Update – Mike Williams, ARP Director, SLCDA

Mike Williams, Airport Redevelopment Program (ARP) Director, presented an update on the ARP (presentation on file). Main points included were:

- CGMP #4 – Landside and Airside enabling status
- CGMP #5 – Terminal/South Concourse West/Gateway status
- CGMP #6 – Roadways/Parking Garage/Central Utility Plant status
- CGMP #7 – Baggage Handling System status
- CGMP #9 – Apron Paving – Taxilane 20/21
- CGMP #9A – SCW Apron Paving and Hydrant Fueling status
- CGMP #15 – NCP Phase 1 enabling
- CGMP #16 – NCP Phase 1
- NCP Baggage Handling System Phase 1/Phase 2
- NCP Apron Paving/Hydrant Fueling
- Job progress photos
- Project statistics
- Near term schedule
- Overall Airport Redevelopment Program budget

Roger Boyer wondered what was included in the \$7 million worth of revisions on CGMP #5. Williams answered that it was comprised of scope changes which included changes to support the North Concourse Program, changes to the sterile corridor, expansion of the Delta Sky Club, expansion of sky deck area, and automated docking system.

Jim Rider asked if the remaining Owner Reserve of \$14,348,827 is not enough, where will the additional funding come from. Wyatt stated that there will be a budget adjustment required at some point along the way. We have enough currently to get us through opening of Phase 1. It would be a budget adjustment and we would fund it through debt.

D. Public Meetings Training – Marco Kunz, Senior City Attorney

Marco Kunz, Senior City Attorney, presented the “Open and Public Meetings Training” which is required by the State law to the Board (presentation on file). Main points included were:

- Notice of meetings annual schedule, and posting requirements.
- Records of open meetings, both written minutes and a recording, are required.
- Many situations are fact specific. If issues arise, please contact Kunz or someone at the City Attorney’s office for specific advice.
- All communications – emails, letters, etc. – are subject to GRAMA requests.
- GRAMA is all inclusive and extensive.

E. Ambassador Program – Nancy Anthon, Operations Manager Customer Service

Nancy Anthon, Operations Customer Service Manager, introduced the Ambassador Program to the Board (presentation on file). Main points included were:

- Volunteer Ambassador Program
- Statistics
- Recruitment Efforts
- Growth of the Program
- Training
- Locations of Ambassadors
- Uniforms
- Requirements
- Duties

F. Election of Board Chair and Vice-Chair

Pinnock called for a vote by acclamation on the nomination of Cynthia Miller as Airport Advisory Board Chair and for Steve Price as Vice Chair of the Airport Advisory Board for 2019. All votes were affirmative.

The Board Chair for 2019 is Cynthia Miller and the Vice-Chair is Steve Price.

Pinnock expressed appreciation for the honor and privilege to give public service and serve on the Airport Board as Chair.

Larry Pinnock adjourned the meeting at 9:22 a.m.

The next Board meeting will be held on February 20, 2019.

Cynthia Miller, Chair

Date

Jacqueline M. Biskupski, Mayor

Date

DEPARTMENT OF AIRPORTS
BOARD MEETING

20 February 2019

DISCUSSION ITEMS

SALT LAKE CITY AIRPORT BOARD

AGENDA: DISCUSSION ITEM (B)
DATE: 20 February 2019
TO: Airport Board
FROM: Bill Wyatt, Executive Director
SUBJECT: **Executive Director's Report**

Bill Wyatt will present a monthly informational report to the Board, may include:

1. ARP progress
2. Ground transportation update
3. Concessions and rental cars
4. Airport safety and security
5. Airport facilities and operations
6. General aviation
7. Passenger and airport users
8. Environmental matters
9. Financial condition
10. Legislative issues
11. Airlines
12. Communications and marketing

SALT LAKE CITY AIRPORT BOARD

AGENDA: DISCUSSION ITEM (C)
DATE: 20 February 2019
TO: Airport Board
FROM: Bill Wyatt, Executive Director
SUBJECT: **Airport Redevelopment Program Update**

Mike Williams, Airport Redevelopment Program (ARP) Director, will present an update on the SLC Airport Redevelopment Program (presentation on file).

Airport Redevelopment Program

Status Update: 02-20-2019



Salt Lake City International Airport



CGMP# 4 – Landside and Airside Enabling

Project: CGMP# 4 - Landside and Airside Enabling

CGMP Original NTE: \$81.09M

CGMP Revision: (\$1.57M) NTE: \$79.52M

CGMP Current NTE: \$79.52M EAC: \$76.4M

Terminal/South Concourse West/Gateway/Roadways/Airside and Landside Enabling and Central Utility Plant Hydronic Piping

Current Status

Schedule

Recent Milestones Achieved

Activity	Target Date
Complete Seq 2 Tunnel Excavation	Dec 2016 A
Complete SCW Surcharge	Dec 2016 A
Complete West Lift Station Pumps	Mar 2017 A
Complete SCW Ductbank	Mar 2017 A
Complete Gateway Hydronic Piping	May 2017 A
Final Completion	Mar 2019

*** Final CGMP Close-out processes underway.**

Concerns/Issues/Risks

*** None at this time**



CGMP# 5 – Terminal/South Concourse West/Gateway

Project: CGMP# 5 - Terminal/Gateway/SCW

CGMP Original NTE: \$795.35M

CGMP Revision: (\$7.00M) NTE: \$788.35M

CGMP Revision: \$7.04M NTE: \$795.39M

CGMP Revision: \$33.07M EAC: \$828.46M

CGMP Current: \$29.9M EAC: \$858.46M

Terminal/Gateway/South Concourse West - Foundations, Structure, Building Envelope and Build-out

Schedule

Recent Milestones Achieved

Activity	Target Date
Complete Pedestrian Bridge Stl	Jan 2019 A
Compl Terminal Exp (CBP) Piles	Jan 2019 A
Start Removal of Plaza Scaffolding	Feb 2019 A
Complete Gateway Deck Concrete	Mar 2019
Term Mech Rms Ready for Equip	Apr 2019
Gateway Skin Complete	Jun 2019

- * Terminal Glazing and Metal Panel Continues.
- * Terrazzo nearing completion in SCW.
- * SCW Holdroom and Sloped Ceiling Grid progressing.
- * Terminal Plaza High Bay Ceiling Punchlist complete.
- * Started removal of Plaza High Bay scaffolding.

Concerns/Issues/Risks

- * Impact of Scope Change Changes.
- * Timely decisions required to support ongoing Construction activities for Ticket Lobby.



CGMP# 6 – Roadways/Parking Garage/Central Utility Plant

Project: CGMP# 6 - Parking Garage/Roadways/Central Utility Plant/Project-Wide Special Systems

CGMP Original NTE: \$363.86M

CGMP Rev: (\$4.37M) NTE: \$359.49M

CGMP Revision: \$2.49M NTE: \$361.98M

CGMP Current: \$7.76M NTE: \$369.74M

Parking Garage/Rental Car Ready Return/Elevated and At-Grade Roadways/Central Utility Plant/Project-Wide IT and Special Systems

Schedule

Recent Milestones Achieved

Activity	Target Date
CUP Circulate Water for HVAC	Mar 2019
Start Parking Garage Elevators	Apr 2019
Parking Garage Roof Stl Complete	May 2019
Elevated Roadway Concrete Comp	May 2019
At-Grade Exit Roadway Switch	Jun 2019
Start Parking Garage Helix Constr	Jul 2019

- * Parking Garage South side Concrete placement progressing approximately 9 Deck Pours Remain.
- * Elevated Roadway Decking Concrete at Terminal progressing.
- * Parking Garage MEP Activities underway on Level 1.
- * CUP Equipment Testing and Commissioning activities continue.

Concerns/Issues/Risks



CGMP# 7 – Baggage Handling System

Project: CGMP# 7 - Baggage Handling System including TSA Screening Area

CGMP Original NTE: \$86.09M
CGMP Current: \$1.25M NTE: \$87.34M
CGMP Pending: \$12.22M NTE: \$99.56M

Terminal/Gateway/South Concourse West and TSA Screening Area Complete Baggage Handling System IT and Special Systems

Schedule

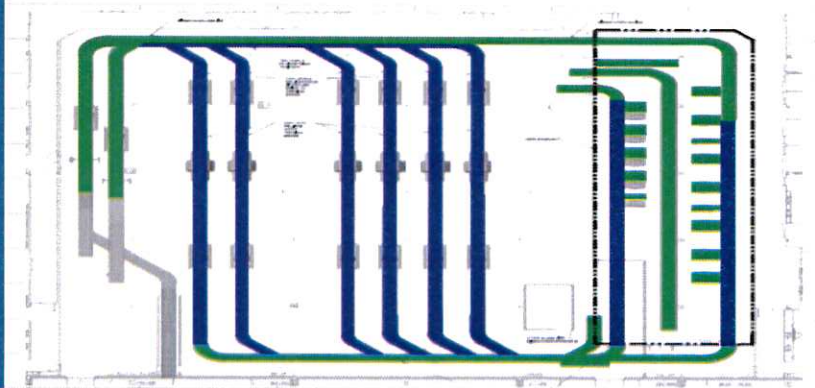
Recent Milestones Achieved

Activity	Target Date
Issue NTP	Sep 2016 A
Start BHS Hanger Installation	Aug 2017 A
Install TSA Provided Equipment	Apr 2019
Start BHS Testing/Commissioning	Nov 2019
Start TSA BHS Acceptance Tests	Mar 2020
BHS Substantial Completion	May 2020

- * Permanent Power Energized for BHS SCW section by section.
- * BHS Terminal CBIS (TSA Screening) Room Conveyor and Electrical installation progressing.
- * BHS TSA OCR Room construction underway.
- * TSA Site Readiness Confirmation completed for delivery of EDX Machines.

Concerns/Issues/Risks

- * Electrical installation labor availability.



CGMP# 9 – Apron Paving – Taxilane 20/21

Project: CGMP# 9 - Apron Paving - Taxilane 20/21 and Taxiway A/B

CGMP Original NTE: \$26.76M

CGMP Revision: (\$1.09M) NTE: \$25.67M

CGMP Current NTE: \$25.67M EAC: \$22.45M

Initial Portion of Apron Paving that will Utilize \$10 million in AIP Funding and also Support Fence Installation for North Concourse Site.

Schedule

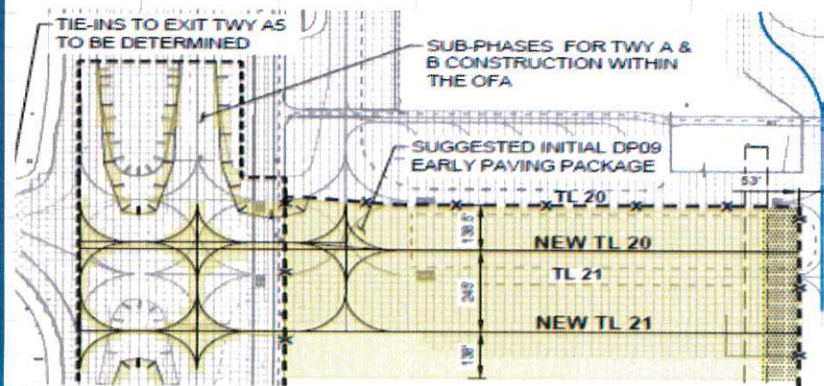
Recent Milestones Achieved

Activity	Target Date
Issue NTP	April 2017 A
Taxiway 'B' Reopens	Sep 2017 A
Taxilane 21 Reopens	Dec 2017 A
Taxiway 'A' Complete	Nov 2017 A
CGMP# 9 Bulletin# 1 Close-out	Mar 2019

*** CGMP# 9 Final Close-out activities underway.**

Concerns/Issues/Risks

*** None at this time.**



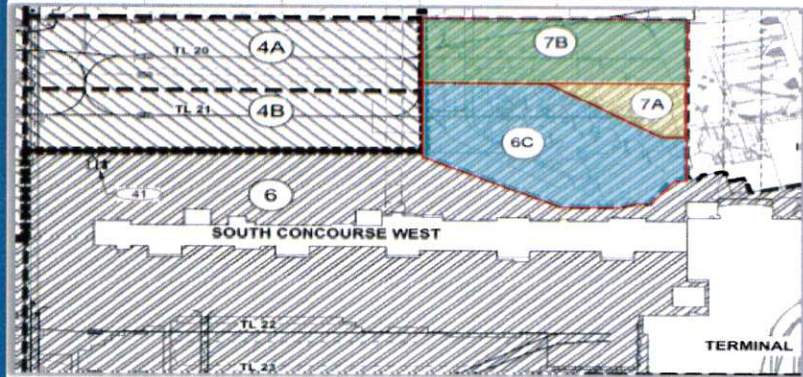
CGMP# 9A – SCW Apron Paving and Hydrant Fueling

Project: CGMP# 9A - SCW Apron Paving and Hydrant Fueling

**CGMP 9A Original NTE: \$76.14M
CGMP 9A EAC: \$76.14M**

Apron Paving and Hydrant Fueling that will Support SCW Opening Day.

Schedule		Recent Milestones Achieved
Activity	Target Date	
Start 2019 Subgrade Prep	Mar 2019	<ul style="list-style-type: none"> * Fueling Trade Contractor welding and installing Fuel Pipe. * Planning for 2019 Apron Paving underway.
Start 2019 Apron Paving	Apr 2019	
Complete SCW North Side Paving	Jun 2019	
Complete SCW West Side Paving	Jun 2019	
Complete SCW South Side Paving	Oct 2019	
Taxiway 'B' Phase 6 Complete	Jul 2020	
Concerns/Issues/Risks		
* None at this time.		



CGMP# 15 – NCP Enabling Phase 1

Project: CGMP# 15 - NCP Phase 1 Enabling

CGMP Original NTE: \$28.2M EAC: \$23.33M

North Concourse Phase 1 Enabling Construction including Ground Improvement and Driven Piles.

Schedule

Recent Milestones Achieved

Activity	Target Date
Start Enabling Construction	Jan 2018 A
Start Driven Piles	Jun 2018 A
Complete Stone Columns	Jul 2018 A
Complete Driven Piles	Aug 2018 A
Start Outer Ramp Sitework	Aug 2018 A
Substantial Completion	Mar 2019

- * Mid-Concourse Tunnel Dewatering continues. underway.
- * Trade Contractor Close-out underway.

Concerns/Issues/Risks

* None at this time.



CGMP# 16 – NCP Phase 1

Project: CGMP# 16 - NCP Phase 1

Budget: \$296.0M
CGMP Initial NTE: \$166.70M
CGMP Revision to Add Part 2: \$95.37M
CGMP Part 3 Revision: \$29.88M
CGMP Current NTE: \$291.98M

North Concourse Phase 1 including Building Structure, Enclosure and Interior Fit-out for 20 Gates.

Schedule

Recent Milestones Achieved

Activity	Target Date
Start Elevated Concrete Decks	Jan 2019 A
Start Interior MEP Overhead	Jan 2019 A
Start Building Exterior Enclosure	Feb 2019 A
Structural Steel Topped-out	Mar 2019
Start Building Roofing	Apr 2019
Start Interior Construction	May 2019

- * Structural Steel erection progressing on schedule.
- * Building Slab-on-Grade Concrete continues.
- * Building Slab-on-Deck Concrete progressing.
- * Mid-Concourse Tunnel Passenger Cell MEP underway.
- * Mid-Concourse Tunnel Passenger Cell finishes progressing.

Concerns/Issues/Risks

- * Labor availability for upcoming trades.



CGMP# 17 – NCP Baggage Handling System Ph 1 / Ph 2

Project: CGMP# 17 - NCP Baggage Handling System

CGMP Original NTE: \$52.76M EAC: \$52.76M

North Concourse Phase 1 and Phase 2 Baggage Handling System.

Schedule

Recent Milestones Achieved

Activity	Target Date
<p>Phase 1 installation supports construction of NCP Phase 1. Baggage Handling System is not Functional until completion of Central Tunnel and NCP Phase 2.</p>	

<p>* BHS Support Steel activities progressing.</p>

Concerns/Issues/Risks



CGMP# 18 – NCP Apron Paving / Hydrant Fueling

Project: CGMP# 18 - NCP Apron Paving/Fueling Phase 1

CGMP NTE: \$73.55M EAC: \$73.55M

North Concourse Phase 1 Apron Paving, Hydrant Fueling and Site Utilities.

Schedule

Recent Milestones Achieved

Activity	Target Date
Start Utility Installation	Oct 2018 A
Start North Waterline - North	Nov 2018 A
Start NW Sanitary Sewer Lift Stn	Dec 2018 A
Start 2019 Subgrade	Mar 2019
Start 2019 Paving	Apr 2019
Complete 2019 Paving	Oct 2019

- * Utility Installation underway.
- * North Sanitary Sewer installation initiated.
- * Planning underway for 2019 Apron Paving.

Concerns/Issues/Risks

Civil Trade Contractor Resources.



Project Statistics

TRP/NCP Trade Staffing 2/1/2019

1,942 Trade Workers on Site

5,064,834 Hours Worked to Date

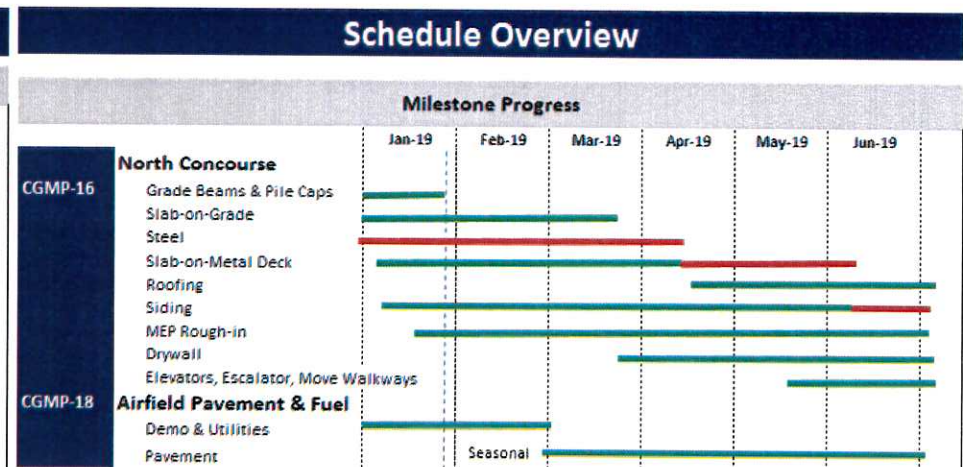
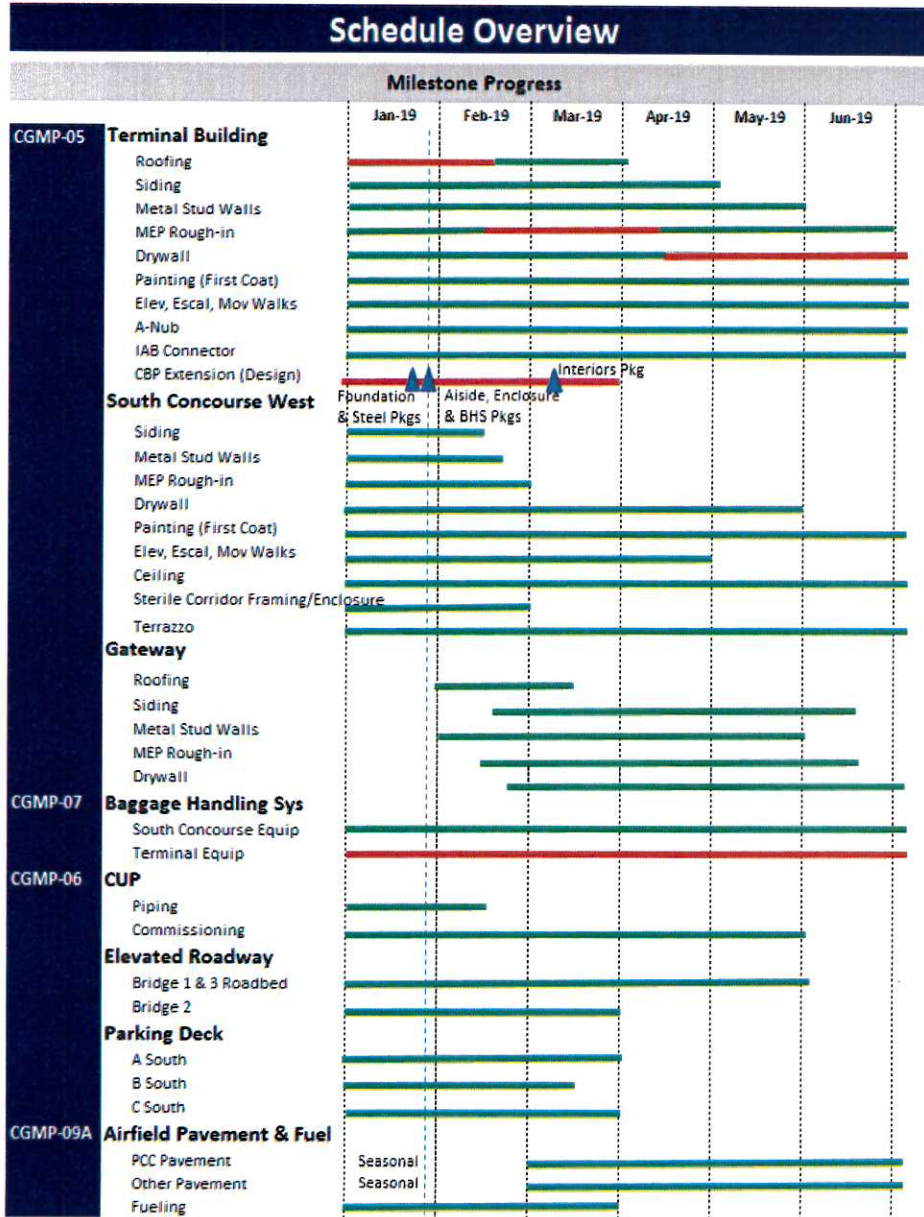
Contract Local/Non-Local Awarded Statistics

Local Trades	Dollar Value	Trade Count	Percentage
Total Local (Wasatch Front) Contractors	\$1,059,074,695	102	67%
Total Out of State Contractors	\$531,383,212	21	33%
Total Contract Awards	\$1,590,457,907	123	100%

Contract Union/Merit Shop Awarded Statistics

Union Trades	Dollar Value	Trade Count	Percentage
Total Union Contractors	\$610,937,898	31	38%
Total Merit Shop Contractors	\$979,520,009	92	62%
Total Contract Awards	\$1,590,457,907	123	100%

Near Term ARP Schedule



Schedule Milestones

- February 7, 2019 – CGMP-06 Third pour Elevated Roadways
- February 11, 2019 – CGMP-06 Fifth Floor Roof Steel for Parking Garage
- February 11, 2019 – CGMP-05 SCW Area 'B' Comm Room turnover
- February 11, 2019 – CGMP-06 Elevated Roadway Post-Tensioning Crew Starts
- February 14, 2019 – CGMP-06 Fourth pour Elevated Roadways
- February 15, 2019 – CGMP-05 First Install: Terminal Interior Curtain Wall
- February 18, 2019 – CGMP-05 SCW Sterile Corridor Elevators Complete
- February 18, 2019 – CGMP-05 SCW Area 'E' Elevators complete
- February 20, 2019 – CGMP-16 NCP First Install: Sheetrock at Sector 'A'
- February 21, 2019 – CGMP-05 First Install: Radiant Floor Heating
- February 20, 2019 – Concessions Food and Beverage Winners Announced
- February 28, 2019 – CGMP-05 First Install: SCW Sterile Corridor Glazing
- March 4, 2019 – CGMP-05 Start Sterile Corridor Glass installation
- March 10, 2019 – CGMP-05 SCW Area 'D/E' Permanent Power
- March 15, 2019 – CGMP-09A Paving Resumes

This month's schedule is based on December 2018 construction update that indicates that the Overall Program is tracking on schedule.



Overall ARP Tracking Budget

January 2019	Original Budget	Revisions	Revised Budget	Invoiced to Date	EAC
CGMP 01 - HDJV Preconstruction Services	\$ 11,375,794	\$ (1,800,387)	\$ 9,575,407	\$ 9,575,407	\$ 9,575,407
CGMP 02 - HDJV General Conditions Services	\$ 105,983,964		\$ 105,983,964	\$ 52,983,335	\$ 105,983,964
CGMP 03 - QTA/RSS Site Work, Utilities, Civil Enabling Ph 1	\$ 90,510,278	\$ (1,788,952)	\$ 88,721,326	\$ 88,721,327	\$ 88,721,326
CGMP 04 - Landside/Airside Enabling	\$ 81,096,442	\$ (1,581,372)	\$ 79,515,070	\$ 76,254,503	\$ 79,515,070
CGMP 05 - Terminal/SCW/Gateway	\$ 788,346,442	\$ 70,019,855	\$ 858,366,297	\$ 564,631,041	\$ 858,366,297
CGMP 06 - Parking Garage, Roadways, CUP	\$ 363,855,782	\$ 5,883,353	\$ 369,739,135	\$ 193,603,176	\$ 369,739,135
CGMP 07 - TRP Baggage Handling System	\$ 86,085,766	\$ 13,472,499	\$ 99,558,265	\$ 50,289,295	\$ 99,558,265
CGMP 09 - Taxilanes 20&21/Taxiways A&B	\$ 26,761,608	\$ (1,100,754)	\$ 25,660,854	\$ 22,432,812	\$ 25,660,854
CGMP 09A - Apron Paving & Fueling/SCW	\$ 76,135,399		\$ 76,135,399	\$ 24,289,944	\$ 76,135,399
CGMP 10 - South Concourse East (SCE)	\$ 395,174,615	\$ (12,218,411)	\$ 382,956,204		\$ 382,956,204
CGMP 11 - Apron Paving & Fueling SCE	\$ 201,388,788		\$ 201,388,788		\$ 201,388,788
CGMP 12 - Existing Structure Demolition	\$ 20,788,411		\$ 20,788,411		\$ 20,788,411
CGMP 13 - AOJV Preconstruction Services	\$ 15,483,607	\$ 2,193,890	\$ 17,677,497	\$ 10,457,053	\$ 17,677,497
CGMP 14 - AOJV General Conditions Ph 1	\$ 87,131,130		\$ 87,131,130	\$ 10,883,609	\$ 87,131,130
CGMP 15 - NCP Enabling Ph 1	\$ 28,222,187		\$ 28,222,187	\$ 19,471,951	\$ 28,222,187
CGMP 16 - North Concourse Ph 1 & Mid-Concourse Tunnel	\$ 297,192,031	\$ (5,208,469)	\$ 291,983,562	\$ 63,348,405	\$ 291,983,562
CGMP 17 - NCP Baggage Handling System	\$ 56,071,065	\$ (3,314,239)	\$ 52,756,826	\$ 2,641,900	\$ 52,756,826
CGMP 18 - NCP Apron Paving & Fueling Ph 1	\$ 83,323,433	\$ (9,770,630)	\$ 73,552,803	\$ 11,320,306	\$ 73,552,803
CGMP 19 - North Concourse Ph 2 & Central Tunnel	\$ 212,535,351	\$ (2,193,890)	\$ 210,341,461		\$ 210,341,461
CGMP 20 - NCP Apron Paving & Fueling Ph 2	\$ 42,110,130		\$ 42,110,130		\$ 42,110,130
CGMP 21 - NCP FF&E/Furniture	\$ 4,121,026		\$ 4,121,026		\$ 4,121,026
Total Program Construction	\$ 3,073,693,249	\$ 52,592,493	\$ 3,126,285,742	\$ 1,200,904,064	\$ 3,126,285,742
TRP Soft Cost	\$ 251,316,222	\$ 8,000,000	\$ 259,316,222	\$ 192,396,388	\$ 259,316,222
NCP Soft Cost	\$ 173,950,554	\$ 2,069,655	\$ 176,020,209	\$ 42,773,477	\$ 176,020,209
Total Program Soft Cost	\$ 425,266,776	\$ 10,069,655	\$ 435,336,431	\$ 235,169,865	\$ 435,336,431
Terminal Redevelopment Program (TRP) Owner Reserve	\$ 30,000,000	\$ (22,981,500)	\$ 7,018,500		\$ 7,018,500
North Concourse Program (NCP) Owner Reserve	\$ 47,010,975	\$ (39,680,648)	\$ 7,330,327		\$ 7,330,327
Total Program Owner Reserve	\$ 77,010,975	\$ (62,662,148)	\$ 14,348,827	\$ -	\$ 14,348,827
Total Airport Redevelopment Program	\$ 3,575,971,000	\$ -	\$ 3,575,971,000	\$ 1,436,073,929	\$ 3,575,971,000

Job Progress Photos – Terminal Building and Gateway



Terminal South to Gateway via Pedestrian Walkway



Ceiling Tile installed at Terminal Plaza High Ceiling



SLCDA Offices in Terminal Level L3



Terminal Expansion – Pile Installation

Job Progress Photos – South Concourse West



SCW Building Exterior – Areas 'A' through 'H', looking north



Finish grinding Terrazzo in SCW Area 'C' Rest Room



SCW Area 'F' Delta Sky Zone, Elevator and Stair Access

Job Progress Photos – Parking Garage, Roadways, CUP



Parking Garage looking northeast



Central Utility Plant Pipe Cleaning/Flushing in Progress



Elevated Roadway Bridge Concrete Pour

Job Progress Terminal Aerial Photo



Terminal and Elevated Road looking Northeast



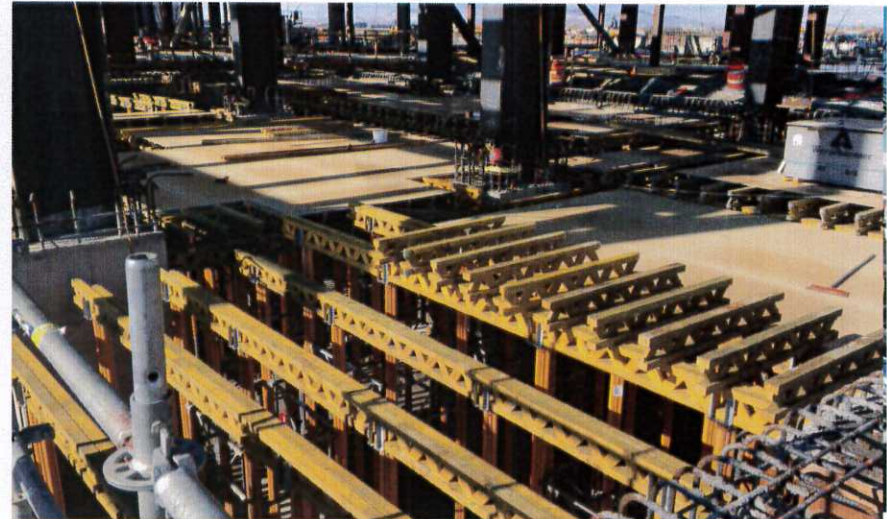
Job Progress Photos – North Concourse



North Concourse Steel Erection looking Southeast



North Concourse Steel Erection Sector 'CN' and 'D'



Setting the Formwork for the NCP Sector 'CN' Floor Slab



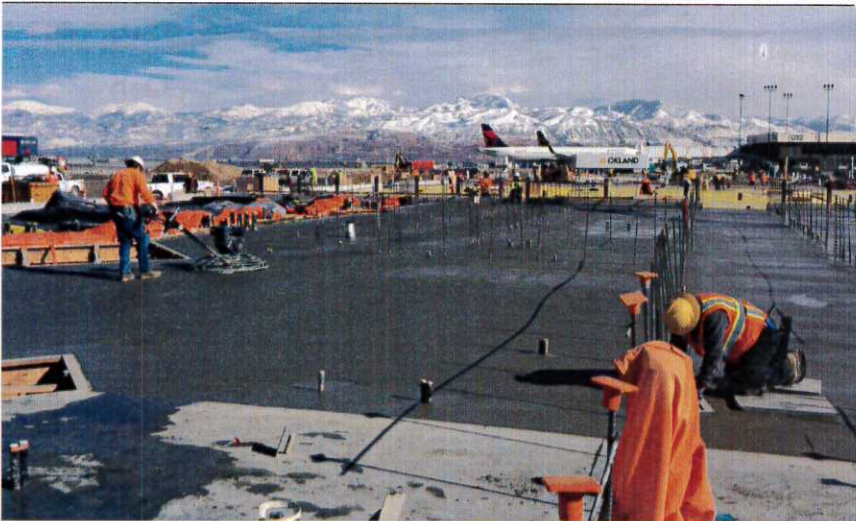
Job Progress Photos – North Concourse



NCP Sector 'E' Electrical Room



NCP Mid-Concourse Tunnel progress



Finishing Slab-on-Grade at NCP Sectors 'D/E'



Setting up for Slab-on-Grade in NCP Sector 'E'

SALT LAKE CITY AIRPORT BOARD

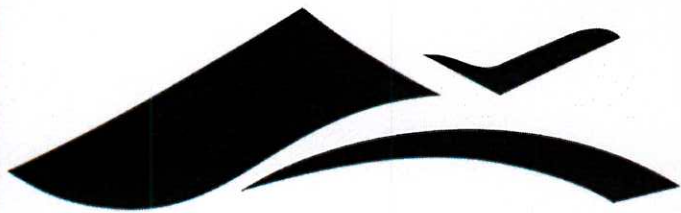
AGENDA: DISCUSSION ITEM (D)
DATE: 20 February 2019
TO: Airport Board
FROM: Bill Wyatt, Executive Director
SUBJECT: **Airport Wildlife Management**

Candace Deavila, Wildlife Manager, and Bobby Boswell, Biologist, USDA, will present an Airport Wildlife Management update to the Board (presentation on file).

Airport Wildlife Management

BOBBY BOSWELL- USDA BIOLOGIST

CANDACE DEAVILA, SLCDA WILDLIFE MANAGER



Salt Lake City
Department of Airports



Wildlife Management Team

- ▶ Program Manager- Candace Deavila
- ▶ USDA Biologist- Bobby Boswell
- ▶ Wildlife Specialists- Shane Collier
Rich Stout
Kevin Thornock
Troy Osborne

-Responsible for mitigation of wildlife hazards through Habitat Modification, Hazing, trapping, and lethal control.

-The airfield Specialists also carry pyro pistols for mitigation of hazards on the AOA.



2018 Strike Data

- ▶ 280 total strikes
 - ▶ 21 damaging
- ▶ 337,000 Operations=
- ▶ 8.3 strikes per 10,000 Ops
- ▶ Cost to the airlines in damaging strikes=\$773,762.94
(figure missing 9 damage estimates)



2018 Strike Guild Breakdown

- ▶ Passerines- 171 \$1000.00
- ▶ Waterfowl- 39 \$641,792.91
- ▶ Raptors- 36 \$31,000.00
- ▶ Unknown- 17
- ▶ Mammal- 13 (bats)
- ▶ Columbidae- 4 (pigeons/ Doves)



Hazardous Wildlife Attractants on or near Airports

A/C 150/5200-33B (2007)

- ▶ Defines separation distances for airports serving piston powered & turbine powered aircraft.
- ▶ Identifies specific Land Practices which are Wildlife Hazards.



Airports serving Piston powered Aircraft

- ▶ Require a 5000' separation distance for any wildlife attractant defined in chapter 2 of the A/C



Airports serving Turbine powered Aircraft

- ▶ Require a 10,000' separation distance for any wildlife attractant defined in chapter 2 of the A/C



All Airports are recommended to protect Approach, Departure, and Circling Airspace.

- ▶ The FAA recommends a distance of 5 miles between the farthest edge of the airport's AOA, and any Wildlife Attractant, if it could cause movement of Wildlife across, the approach, and departure space.



FAA's identified land practices which are known Wildlife Attractants.

- ▶ Waste Disposal Facilities
- ▶ Water Management Facilities
- ▶ Wetlands
- ▶ Dredge spoil containment areas
- ▶ Agricultural activities
- ▶ Golf Courses
- ▶ Other- Synergistic effects- (2 or more land uses which are not defined in the list, but may cause movement of wildlife across the Airspace, i.e. Soccer Complex, and International Center.

Waste Disposal Facilities

- ▶ Solid Waste Landfills
- ▶ Trash Transfer stations
- ▶ Composting Operations
- ▶ Recycling Centers
- ▶ Fly Ash disposal stations



Water Management Facilities

- ▶ Storm Water Management
- ▶ Waste Water Treatment
- ▶ Artificial Marshes
- ▶ Waste Water Discharge, and sludge Disposal



Wetlands

- ▶ Existing
- ▶ New Airport Development
- ▶ Mitigation for wetland impacts



Wetlands

Dredge Spoil Containment Areas

- ▶ Areas set aside to contain soils which have been dredged from a waterway.



Agricultural Activities

- ▶ Livestock
- ▶ Aquaculture
- ▶ Alternative use of agricultural land



Golf Courses

- ▶ Golf Courses
- ▶ Landscaping, and Landscape maintenance.
- ▶ Airports surrounded by wildlife habitat- woodlands, water, or wetlands.
- ▶ Other specific land uses- i.e sport or commercial fishing, shellfish harvesting.



Hazing numbers on the Golf Course for the last 45 days:

- Geese- 640
- Ducks- 395
- Gulls- 33

Synergistic effects of surrounding land uses.

- ▶ A pond located on the East side of the Airport, and a hay field located on the West side, may not be inside the separation distances, however causes movement of wildlife across the airspace.
- ▶ The International center ponds and Soccer complex are a good example of land uses that are not specifically on the FAA's list, however create a flyway across the airport's airspace as waterfowl travel between the 2 areas.



Pending Regulations...



U.S. Department
of Transportation
**Federal Aviation
Administration**

Advisory Circular

Subject: Hazardous Wildlife Attractants on or near Airports **Date:** Draft **AC No:** 150/5200-33C
Initiated By: AAS-300 **Change:**

1 **Purpose.**

This Advisory Circular (AC) provides guidance on certain land uses that have the potential to attract hazardous wildlife on or near public-use airports. It also discusses airport development projects (including airport construction, expansion, and renovation) affecting aircraft movement near hazardous wildlife attractants. Appendix 1 provides definitions of terms used in this AC.

2 **Cancellation.**

This AC cancels AC 150/5200-33B, *Hazardous Wildlife Attractants on or near Airports*, dated August 28, 2007.

3 **Application.**

Airports that hold Airport Operating Certificates issued under Title 14, Code of Federal Regulations (CFR), Part 139, Certification of Airports, Subpart D, may use the standards, practices and recommendations contained in this AC to comply with the wildlife hazard management requirements of Part 139. All airports (certificated and non-certificated) that have received Federal assistance and/or that have authority to impose and/or use a Passenger Facility Charge must use the standards in Chapter 1 of this AC. The FAA recommends the guidance in all other sections for non-certificated airports (hereinafter referred to as "Subject Airports") that receive Federal assistance and/or authority to impose and/or use a Passenger Facility Charge. The FAA also recommends the guidance in this AC for land-use planners and developers of projects, facilities, and activities on or near airports.

AC 150/5200-33C (Draft)

4

Principal Changes.

Change in this AC include:

1. Clarification by the FAA that non-certificated airports are recommended to conduct a Wildlife Hazard Assessment (Assessment) or a Wildlife Hazard Site Visit (Site Visit);
2. Table 1, Ranking of Hazardous Species, has been moved to Advisory Circular 150/5200-32B, *Reporting Wildlife Aircraft Strikes* (5/31/2013)
3. Consolidation and reorganization of discussion on land uses of concern; and updated procedures for evaluation and mitigation. Discussion addresses off-airport hazardous wildlife attractants, followed by discussion of on-airport attractants. It also clarifies language regarding the applicability of AC requirements.

CHAPTER 1. GENERAL SEPARATION CRITERIA FOR HAZARDOUS WILDLIFE ATTRACTANTS ON OR NEAR AIRPORTS

1.1.3 The FAA recommends the minimum separation criteria outlined below for land-use practices that attract hazardous wildlife to the vicinity of airports. Please note that FAA criteria include land uses that cause movement of hazardous wildlife onto, into, or across the airport's approach or departure airspace or air operations area (AOA). (See the discussion of the synergistic effects of surrounding land uses in Paragraph 2.8 of this AC.). For the purpose of evaluating distance criteria, the delineation of the AOA may also consider future airport development plans depicted on the Airport Layout Plan (e.g., planned runway extension).

CHAPTER 2. LAND-USE PRACTICES ON OR NEAR AIRPORTS THAT POTENTIALLY ATTRACT HAZARDOUS WILDLIFE

2.1.3 This section discusses land-use practices having the potential to attract hazardous wildlife and threaten aviation safety. The FAA has determined that the land uses listed below are generally not compatible with safe airport operations when they are located within the separation distances provided in Paragraphs 1.2 through 1.4.

CHAPTER 4. RECOMMENDED PROCEDURES FOR AIRPORTS REGARDING OFF-AIRPORT ATTRACTANTS

4.1 Review Protocol for Off-Site Land Use Modifications Near Airports.

4.1.1 Although the FAA is not a permitting agency for land use modifications that occur off airport properties, it does review permits and proposals for land use changes that could pose an unacceptable risk to airport safety by attracting hazardous wildlife on and around airports. Each of the land uses listed in Chapter 2 of this AC has the potential to pose a risk to airport operations when they are located within the separation distances provided in Paragraphs 1.2 through 1.4.

4.1.3 The FAA analyzes each land-use modification or new facility proposal prior to its establishment or any significant planned changes to design or operations that may increase the risk level. Typically, such reviews are initiated by state or federal permitting agencies seeking FAA input on new or revised permits. As part of a review, the FAA considers several factors that include, but are not limited to:

1. Type of Attractant
2. Size of Attractant
3. Location / Distance of Attractant from Airport
4. Design (e.g., construction, material, mitigation techniques employed into design)
5. Operation (e.g., cleanliness, constancy/ volume of use, seasonality, time of day)
6. Monitoring Protocols (e.g., frequency, documentation, evaluation, species identification and number thresholds that trigger actions of communication or mitigation, baseline wildlife data)
7. Mitigation Protocols (e.g., responsibilities, methods, intensity, pre-determined objectives, documentation, evaluation)
8. Communication Protocols to Airport and/ or Air Traffic Control Tower

4.1.5 If, after taking into account the factors above, FAA determines that a facility poses a significant risk to airport safety, FAA will oppose its establishment or renewal.

4.2 FAA Notification and Review of Proposed Land-Use Practice Changes in the Vicinity of Public-Use Airports.

The FAA discourages the development of waste disposal and other facilities, discussed in Chapter 2, located within the 5,000/ 10,000-foot and 5-mile criteria specified in Paragraphs 1.2 through 1.4.

- 4.2.1** For projects that are located within 5 statute miles of the airport's AOA, the FAA may review development plans, proposed land-use changes, operational changes, or wetland mitigation plans to determine if such changes present potential wildlife hazards to aircraft operations. The FAA considers sensitive airport areas as those that lie under or next to approach or departure airspace. This brief examination should indicate if further investigation is warranted.

Approximate location of NWQ , and future West Runway



4.3 Waste Management Facilities.

4.3.1.3 When new or expanded MSWLF are being proposed near airports, MSWLF operators must notify the airport operator and the FAA of the proposal as early as possible pursuant to 40 CFR § 258.

4.4 Other Land-Use Practice Changes.

- 4.4.1 As a matter of policy, the FAA encourages operators of public-use airports who become aware of proposed land use practice changes that may attract hazardous wildlife within 5 statute miles of their airports to promptly notify the FAA. The FAA also encourages proponents of such land use changes to notify the FAA as early in the planning process as possible. Advanced notice affords the FAA an opportunity (1) to evaluate the effect of a particular land-use change on aviation safety and (2) to support efforts by the airport sponsor to restrict the use of land next to or near the airport to uses that are compatible with the airport.

4.4.4 Airports that Have Received Federal Assistance.

Airports that have received Federal assistance are required by their grant assurances to take appropriate actions to restrict the use of land next to or near the airport to uses that are compatible with normal airport operations. The FAA requires that airport operators oppose off-airport land-use changes or practices, to the extent practicable, within the separations identified in Paragraphs 1.2 through 1.4, which may attract hazardous wildlife. Failure to do so may lead to noncompliance with applicable grant assurances. The FAA will not approve the placement of airport development projects pertaining to aircraft movement in the vicinity of hazardous wildlife attractants without appropriate mitigating measures. Increasing the intensity of wildlife control efforts is not a substitute for preventing, eliminating or reducing a proposed wildlife hazard. Airport operators should identify hazardous wildlife attractants and any associated wildlife hazards during any planning process for airport development projects.

4.5 Coordination to Prevent Creation of New Off-Airport Hazardous Wildlife Attractants.

4.5.2.1 External Outreach.

Airports should consider outreach to local planning and zoning organizations on land uses of concern or to local organizations involved with natural resource management (including wildlife management, wetlands management, and parks). Airports should also consider developing and distributing position letters and/ or educational materials on airport-specific concerns regarding wildlife hazards, wildlife activity and/ or attraction, etc. Finally, airports should provide formal comments on local procedures, laws, ordinances, plans, and/ or regulatory actions such as permits related to land uses of concern.

4.7 Prompt Remedial Action.

Regardless of the type or source of attraction, Part 139 certificated airports must take immediate action to alleviate wildlife hazards whenever they are detected, while non-certificated airports **should** take immediate action to alleviate wildlife hazards whenever they are detected. In addition, airports should take prompt action to identify the source of attraction and cooperatively develop procedures to mitigate and monitor the attractant. **For Part 139 Certificated airports, procedures for immediate action are required in accordance with 139.337 (a).**

SALT LAKE CITY AIRPORT BOARD

AGENDA: DISCUSSION ITEM (E)
DATE: 20 February 2019
TO: Airport Board
FROM: Bill Wyatt, Executive Director
SUBJECT: **Concession Program RFP Update**

John Buckner, Commercial & Administration Director, will present an update on the Concession Program RFP to the Board (presentation on file).

DEPARTMENT OF AIRPORTS
BOARD MEETING

20 February 2019

INFORMATIONAL ITEMS



**SALT LAKE CITY INTERNATIONAL AIRPORT
AIR TRAFFIC STATISTICS AND ACTIVITY REPORT
TWELVE MONTHS ENDED DECEMBER 2018**

	December 2018	CHANGE	YTD 2018	CHANGE	12 MO ROLLING Ending 12/2018	CHANGE
PASSENGERS						
<i>DOMESTIC</i>						
Enplaned	964,287	5.14%	12,250,382	5.13%	12,250,382	5.13%
Deplaned	1,008,044	5.45%	12,231,902	5.15%	12,231,902	5.15%
TOTAL DOMESTIC	1,972,331	5.30%	24,482,284	5.14%	24,482,284	5.14%
<i>INTERNATIONAL</i>						
Enplaned	35,901	18.95%	526,114	17.77%	526,114	17.77%
Deplaned	34,333	16.91%	545,846	16.77%	545,846	16.77%
TOTAL INTERNATIONAL	70,234	17.94%	1,071,960	17.26%	1,071,960	17.26%
TOTAL PASSENGERS	2,042,565	5.69%	25,554,244	5.60%	25,554,244	5.60%
LANDED WEIGHT						
Air Carriers	1,146,050,989	4.50%	14,070,627,335	4.30%	14,070,627,335	4.30%
Cargo Carriers	135,591,059	7.23%	1,204,030,421	6.84%	1,204,030,421	6.84%
TOTAL LANDED WEIGHT (LBS)	1,281,642,048	4.78%	15,274,657,756	4.50%	15,274,657,756	4.50%
MAIL						
Enplaned	1,342,430	5.35%	26,565,358	13.16%	26,565,358	13.16%
Deplaned	1,143,418	0.68%	14,468,568	2.65%	14,468,568	2.65%
TOTAL MAIL (LBS)	2,485,848	3.15%	41,033,926	9.22%	41,033,926	9.22%
CARGO						
Enplaned	18,722,372	9.62%	181,717,354	4.74%	181,717,354	4.74%
Deplaned	20,630,094	3.06%	210,300,643	2.96%	210,300,643	2.96%
TOTAL CARGO (LBS)	39,352,466	6.08%	392,017,997	3.78%	392,017,997	3.78%
MAIL & CARGO						
Enplaned	9,361	9.61%	90,859	4.74%	90,859	4.74%
Deplaned	10,315	3.06%	105,150	2.96%	105,150	2.96%
TOTAL MAIL & CARGO (TONS)	19,676	6.08%	196,009	3.78%	196,009	3.78%
AIRCRAFT OPERATIONS						
Passenger Aircraft	21,006	1.71%	252,768	1.51%	252,768	1.51%
All-Cargo Aircraft	2,048	0.49%	20,744	3.00%	20,744	3.00%
General Aviation	4,421	17.02%	52,924	3.97%	52,924	3.97%
Military	287	-25.84%	6,132	-15.15%	6,132	-15.15%
TOTAL AIRCRAFT OPERATIONS	27,762	3.38%	332,568	1.61%	332,568	1.61%

**SALT LAKE CITY INTERNATIONAL AIRPORT
PASSENGER TRAFFIC REPORT
TWELVE MONTHS ENDED DECEMBER 2018**

	December 2017	December 2018	% CHANGE	YTD 2017	YTD 2018	% CHANGE	12 MO ROLLING Ending 12/2018	% CHANGE
ENPLANED PASSENGERS								
AEROMEXICO	251	4,252	1594.0%	251	44,082	17462.5%	44,082	17462.5%
AIR CANADA	-	-	0.0%	17,393	-	-100.0%	0	-100.0%
ALASKA	20,713	14,068	-32.1%	288,160	236,963	-17.8%	236,963	-17.8%
Horizon Air / Alaska	1,871	-	-100.0%	34,571	7,174	-79.2%	7,174	-79.2%
Skywest / Alaska	5,366	12,936	141.1%	73,605	119,741	62.7%	119,741	62.7%
AMERICAN	52,969	44,073	-16.8%	632,792	623,165	-1.5%	623,165	-1.5%
Compass	1,890	1,704	-9.8%	36,323	23,458	-35.4%	23,458	-35.4%
Envoy Air	-	-	0.0%	1,137	-	-100.0%	-	-100.0%
American/Mesa Air	-	-	0.0%	-	3,272	100.0%	3,272	100.0%
SkyWest (American)	6,009	8,857	47.4%	92,550	105,873	14.4%	105,873	14.4%
DELTA	462,205	492,792	6.6%	6,312,890	6,630,148	5.0%	6,630,148	5.0%
SkyWest (Delta Connection)	180,476	186,597	3.4%	2,045,769	1,942,976	-5.0%	1,942,976	-5.0%
Compass (Delta Connection)	21,255	37,457	76.2%	113,414	409,859	261.4%	409,859	261.4%
FRONTIER	20,788	16,931	-18.6%	234,920	277,655	18.2%	277,655	18.2%
JETBLUE	31,900	27,468	-13.9%	330,084	367,173	11.2%	367,173	11.2%
KLM ROYAL DUTCH AIRLINES	-	-	0.0%	19,955	21,316	6.8%	21,316	6.8%
SOUTHWEST	98,817	99,162	0.3%	1,246,652	1,304,109	4.6%	1,304,109	4.6%
UNITED	19,496	21,788	11.8%	286,747	286,082	-0.2%	286,082	-0.2%
GoJet Airlines	660	586	-11.2%	660	13,023	1873.2%	13,023	1873.2%
Express Jet	100	-	-100.0%	131	418	219.1%	418	219.1%
Mesa Airlines (United Express)	1,760	3,191	81.3%	16,533	38,110	130.5%	38,110	130.5%
Republic Airways (United)	800	2,811	251.4%	36,781	17,574	-52.2%	17,574	-52.2%
SkyWest (United Express)	19,660	25,374	29.1%	269,889	302,021	11.9%	302,021	11.9%
Trans States	-	-	0.0%	319	-	-100.0%	0	-100.0%
Charters	350	141	-59.7%	7,529	2,304	-69.4%	2,304	-69.4%
West Coast Charters	-	0	0.0%	-	2	100.0%	2	100.0%
TOTAL ENPLANED PASSENGERS	947,336	1,000,188	5.6%	12,099,055	12,776,496	5.6%	12,776,496	5.6%
DEPLANED PASSENGERS								
AeroMexico	284	4,044	1323.9%	284	43,683	15281.3%	43,683	15281.3%
AIR CANADA	-	-	0.0%	16,789	-	-100.0%	0	-100.0%
ALASKA AIR	21,407	14,212	-33.6%	283,367	229,767	-18.9%	229,767	-18.9%
Horizon Air / Alaska	1,949	-	-100.0%	31,866	7,524	-76.4%	7,524	-76.4%
Skywest / Alaska	5,581	13,760	146.6%	77,308	120,034	55.3%	120,034	55.3%
AMERICAN	56,043	51,229	-8.6%	627,573	629,666	0.3%	629,666	0.3%
Compass	1,974	1,835	-7.0%	35,886	23,001	-35.9%	23,001	-35.9%
Envoy Air (American)	-	-	0.0%	1,017	-	-100.0%	-	-100.0%
American/Mesa Air	-	-	0.0%	-	3,052	100.0%	3,052	100.0%
SkyWest (American)	6,398	10,518	64.4%	89,746	108,441	20.8%	108,441	20.8%
DELTA	480,393	512,473	6.7%	6,315,202	6,635,496	5.1%	6,635,496	5.1%
SkyWest (Delta Connection)	187,459	188,004	0.3%	2,042,520	1,937,581	-5.1%	1,937,581	-5.1%
Compass (Delta Connection)	22,715	37,194	63.7%	113,441	399,969	252.6%	399,969	252.6%
FRONTIER	21,204	17,442	-17.7%	239,418	277,588	15.9%	277,588	15.9%
JETBLUE	33,533	29,481	-12.1%	329,198	368,737	12.0%	368,737	12.0%
KLM ROYAL DUTCH AIRLINES	-	-	0.0%	39,726	38,587	-2.9%	38,587	-2.9%
SOUTHWEST	102,289	104,155	1.8%	1,247,191	1,301,711	4.4%	1,301,711	4.4%
UNITED	20,008	25,289	26.4%	274,584	286,923	4.5%	286,923	4.5%
GoJet Airlines	638	584	-8.5%	638	13,958	2087.8%	13,958	2087.8%
Express Jet	99	-	-100.0%	174	419	140.8%	419	140.8%
Mesa Airlines / United Express	1,706	3,311	94.1%	16,825	38,088	126.4%	38,088	126.4%
Republic Airways (United)	868	2,853	228.7%	38,239	18,369	-52.0%	18,369	-52.0%
SkyWest (United Express)	20,260	25,763	27.2%	270,941	292,848	8.1%	292,848	8.1%
Trans States	-	-	0.0%	314	-	-100.0%	0	-100.0%
Charters	533	230	-56.8%	7,943	2,306	-71.0%	2,306	-71.0%
West Coast Charters	-	0	0.0%	-	2	100.0%	2	100.0%
TOTAL DEPLANED PASSENGERS	985,341	1,042,377	5.8%	12,100,190	12,777,748	5.6%	12,777,748	5.6%
TOTAL PASSENGERS*	1,932,677	2,042,565	5.7%	24,199,245	25,554,244	5.6%	25,554,244	5.6%
INTERNATIONAL - ENPLANED								
AEROMEXICO	251	4,252	1594.0%	251	44,082	17462.5%	44,082	17462.5%
AIR CANADA	-	-	0.0%	17,393	-	-100.0%	0	-100.0%
DELTA	24,175	26,710	10.5%	316,621	381,390	20.5%	381,390	20.5%
SkyWest (Delta Connection)	5,756	3,765	-34.6%	82,885	21,661	-73.9%	21,661	-73.9%
Compass	-	1,174	100.0%	9,469	57,665	509.0%	57,665	509.0%
KLM ROYAL DUTCH AIRLINES	-	-	0.0%	19,955	21,316	6.8%	21,316	6.8%
Charters	-	-	0.0%	142	-	-100.0%	-	-100.0%
TOTAL ENPLANED INTERNATIONAL	30,182	35,901	18.9%	446,716	526,114	17.8%	526,114	17.8%
DEPLANED INTERNATIONAL								
AEROMEXICO	284	4,044	1323.9%	284	43,683	15281.3%	43,683	15281.3%
AIR CANADA	-	-	0.0%	16,789	-	-100.0%	0	-100.0%
DELTA	23,321	25,484	9.3%	319,977	384,872	20.3%	384,872	20.3%
SkyWest (Delta Connection)	5,630	3,636	-35.4%	80,833	21,332	-73.6%	21,332	-73.6%
Compass	-	1,169	100.0%	9,705	57,372	491.2%	57,372	491.2%
KLM ROYAL DUTCH AIRLINES	-	-	0.0%	39,726	38,587	-2.9%	38,587	-2.9%
Charters	133	-	-100.0%	133	-	-100.0%	-	-100.0%
TOTAL DEPLANED INTERNATIONAL	29,368	34,333	16.9%	467,447	545,846	16.8%	545,846	16.8%
TOTAL INTERNATIONAL PASSENGERS	59,550	70,234	17.9%	914,163	1,071,960	17.3%	1,071,960	17.3%

*Includes International

**SALT LAKE CITY INTERNATIONAL AIRPORT
TWELVE MONTHS ENDED DECEMBER 2018
Based on Total Enplanements**

MARKET SHARE

	December 2017	MARKET SHARE	December 2018	MARKET SHARE	YTD 2017	MARKET SHARE	YTD 2018	MARKET SHARE	12 MO ROLLING Ending 12/2017	12 MO ROLLING Ending 12/2018	MARKET SHARE
AEROMEXICO	251	0.03%	4,252	0.43%	251	0.00%	44,082	0.35%	251	44,082	0.35%
AIR CANADA	-	0.00%	-	0.00%	17,393	0.14%	-	0.00%	17,393	-	0.00%
ALASKA	27,950	2.95%	27,004	2.70%	396,336	3.28%	363,878	2.85%	396,336	363,878	2.85%
AMERICAN	60,868	6.43%	54,634	5.46%	762,802	6.30%	755,768	5.92%	762,802	755,768	5.92%
DELTA	663,936	70.13%	716,846	71.67%	8,472,073	70.03%	8,982,983	70.31%	8,472,073	8,982,983	70.31%
FRONTIER	20,788	2.20%	16,931	1.69%	234,920	1.94%	277,655	2.17%	234,920	277,655	2.17%
JETBLUE	31,900	3.37%	27,468	2.75%	330,084	2.73%	367,173	2.87%	330,084	367,173	2.87%
KLM ROYAL DUTCH	-	0.00%	-	0.00%	19,955	0.16%	21,316	0.17%	19,955	21,316	0.17%
SOUTHWEST	98,817	10.44%	99,162	9.91%	1,246,652	10.30%	1,304,109	10.21%	1,246,652	1,304,109	10.21%
UNITED	41,816	4.42%	53,750	5.37%	610,400	5.05%	657,228	5.14%	610,400	657,228	5.14%
Charters	350	0.04%	141	0.01%	7,529	0.06%	2,304	0.02%	7,529	2,304	0.02%
TOTAL ENPLANEMENTS	946,676	100%	1,000,188	100%	12,098,395	100%	12,776,496	100%	12,098,395	12,776,496	100%

PERCENT CHANGE YOY

	December 2017	December 2018	PERCENT CHANGE	YTD 2017	YTD 2018	PERCENT CHANGE	12 MO ROLLING Ending 12/2017	12 MO ROLLING Ending 12/2018	PERCENT CHANGE
AEROMEXICO	251	4,252	100.00%	251	44,082	100.00%	251	44,082	100.00%
AIR CANADA	-	-	#DIV/0!	17,393	-	-100.00%	17,393	-	-100.00%
ALASKA	27,950	27,004	-3.38%	396,336	363,878	-8.19%	396,336	363,878	-8.19%
AMERICAN	60,868	54,634	-10.24%	762,802	755,768	-0.92%	762,802	755,768	-0.92%
DELTA	663,936	716,846	7.97%	8,472,073	8,982,983	6.03%	8,472,073	8,982,983	6.03%
FRONTIER	20,788	16,931	-18.55%	234,920	277,655	18.19%	234,920	277,655	18.19%
JETBLUE	31,900	27,468	-13.89%	330,084	367,173	11.24%	330,084	367,173	11.24%
KLM ROYAL DUTCH	-	-	0.00%	19,955	21,316	0.00%	19,955	21,316	6.82%
SOUTHWEST	98,817	99,162	0.35%	1,246,652	1,304,109	4.61%	1,246,652	1,304,109	4.61%
UNITED	41,816	53,750	28.54%	610,400	657,228	7.67%	610,400	657,228	7.67%
Charters	350	141	-59.71%	7,529	2,304	-69.40%	7,529	2,304	-69.40%
TOTAL ENPLANEMENTS	946,676	1,000,188	5.7%	12,098,395	12,776,496	5.6%	12,098,395	12,776,496	5.6%

**SALT LAKE CITY INTERNATIONAL AIRPORT
LANDING ACTIVITY
TWELVE MONTHS ENDED DECEMBER 2018**

	December 2017	December 2018	CHANGE	YTD 2017	YTD 2018	CHANGE	12 MO ROLLING Ending 12/2018	% CHANGE
TOTAL NUMBER OF LANDINGS								
SCHEDULED CARRIERS								
AEROMEXICO	2	31	1450.0%	2	364	18100.0%	364	18100.0%
AIR CANADA	-	-	0.0%	230	-	-100.0%	-	-100.0%
ALASKA	169	100	-40.8%	2,318	1,811	-21.9%	1,811	-21.9%
Horizon Air / Alaska	31	-	-100.0%	565	140	-75.2%	140	-75.2%
Skywest / Alaska	87	207	137.9%	1,171	1,891	61.5%	1,891	61.5%
AMERICAN	423	355	-16.1%	4,652	4,781	2.8%	4,781	2.8%
Compass	31	31	0.0%	585	377	-35.6%	377	-35.6%
American/Mesa Air	-	-	0.0%	1	47	4600.0%	47	4600.0%
Envoy Air (American)	1	-	-100.0%	19	1	-94.7%	1	-94.7%
SkyWest (American)	112	172	53.6%	1,560	1,764	13.1%	1,764	13.1%
DELTA	3,503	3,578	2.1%	46,103	47,356	2.7%	47,356	2.7%
SkyWest (Delta Connection)	3,279	3,404	3.8%	38,411	35,934	-6.4%	35,934	-6.4%
Compass (Delta Connection)	331	548	65.6%	1,654	5,734	246.7%	5,734	246.7%
FRONTIER	129	111	-14.0%	1,405	1,591	13.2%	1,591	13.2%
JETBLUE	247	215	-13.0%	2,515	2,736	8.8%	2,736	8.8%
KLM ROYAL DUTCH AIRLINES	-	-	0.0%	93	93	0.0%	93	0.0%
SOUTHWEST	882	859	-2.6%	11,047	10,970	-0.7%	10,970	-0.7%
UNITED	158	185	17.1%	2,126	2,243	5.5%	2,243	5.5%
GoJet	34	9	-73.5%	34	212	523.5%	212	523.5%
Express Jet	2	-	-100.0%	4	10	150.0%	10	150.0%
Mesa / United Express	25	49	96.0%	234	546	133.3%	546	133.3%
Republic Airways Holdings	13	43	230.8%	574	268	-53.3%	268	-53.3%
SkyWest (United Express)	426	403	-5.4%	4,447	4,603	3.5%	4,603	3.5%
Trans States	1	-	-100.0%	7	-	-100.0%	-	-100.0%
SUBTOTAL SCHEDULED CARRIERS:	9,886	10,300	4.2%	119,757	123,472	3.1%	123,472	3.1%
CHARTER CARRIERS								
ALLEGiant AIR	-	-	0.0%	10	6	-40.0%	6	-40.0%
BOMBARDIER BUSINESS JETS	24	49	104.2%	236	226	-4.2%	226	-4.2%
BOUTIQUE AIR	83	-	-100.0%	1,298	205	-84.2%	205	-84.2%
DELTA PRIVATE JETS	16	-	-100.0%	214	185	-13.6%	185	-13.6%
EXECUTIVE JET MANAGEMENT	21	-	-100.0%	136	81	-40.4%	81	-40.4%
FLIGHT OPTIONS	13	-	-100.0%	109	38	-65.1%	38	-65.1%
KEYLIME AIR	1	-	-100.0%	9	11	22.2%	11	22.2%
NETJETS	139	133	-4.3%	1,330	1,307	-1.7%	1,307	-1.7%
SUNSET AVIATION	1	-	-100.0%	53	31	-41.5%	31	-41.5%
SWIFT AIR	-	-	0.0%	13	5	-61.5%	5	-61.5%
VIRGIN AMERICA	7	-	-100.0%	59	1	-98.3%	1	-98.3%
XOJET	23	17	-26.1%	196	108	-44.9%	108	-44.9%
OTHER CHARTER	112	4	-96.4%	1,080	709	-34.4%	709	-34.4%
SUBTOTAL CHARTER CARRIERS:	440	203	-53.9%	4,743	2,913	-38.6%	2,913	-38.6%
CARGO CARRIERS								
AERO CHARTER & TRANSPORT	21	-	-100.0%	261	157	-39.8%	157	-39.8%
AIR TRANSPORT INTERNATIONAL	3	-	-100.0%	11	4	-63.6%	4	-63.6%
ALPINE AVIATION	68	176	158.8%	688	1,781	158.9%	1,781	158.9%
AMERIFLIGHT	306	192	-37.3%	3,224	2,355	-27.0%	2,355	-27.0%
CORPORATE AIR (BILLINGS)	131	130	-0.8%	1,331	1,461	9.8%	1,461	9.8%
EMPIRE	16	16	0.0%	201	207	3.0%	207	3.0%
FEDERAL EXPRESS	165	186	12.7%	1,619	1,662	2.7%	1,662	2.7%
GEM AIR	81	97	19.8%	458	693	51.3%	693	51.3%
SOUTHERN AIR	42	44	4.8%	520	512	-1.5%	512	-1.5%
UPS	160	163	1.9%	1,373	1,367	-0.4%	1,367	-0.4%
WESTERN AIR EXPRESS	20	15	-25.0%	323	100	-69.0%	100	-69.0%
OTHER CARGO	6	5	-16.7%	62	72	16.1%	72	16.1%
SUBTOTAL CARGO CARRIERS:	1,019	1,024	0.5%	10,071	10,371	3.0%	10,371	3.0%
TOTAL LANDINGS	11,345	11,527	1.6%	134,571	136,756	1.6%	136,756	1.6%
TOTAL LANDED WEIGHT								
SCHEDULED CARRIERS								
AEROMEXICO	274,300	2,945,000	973.6%	274,300	35,005,583	12661.8%	35,005,583	12661.8%
AIR CANADA	-	-	0.0%	22,310,000	-	-100.0%	-	-100.0%
ALASKA	25,325,000	14,792,298	-41.6%	342,923,800	273,824,088	-20.2%	273,824,088	-20.2%
Horizon Air / Alaska	1,914,250	-	-100.0%	35,417,030	8,645,000	-75.6%	8,645,000	-75.6%
Skywest / Alaska	6,465,345	15,516,099	140.0%	86,117,657	141,296,375	64.1%	141,296,375	64.1%
AMERICAN	59,967,580	52,189,788	-13.0%	679,431,996	700,791,216	3.1%	700,791,216	3.1%
Compass	2,323,450	2,323,450	0.0%	43,845,750	28,256,150	-35.6%	28,256,150	-35.6%
Envoy Air (American)	67,000	-	-100.0%	1,408,150	74,950	-94.7%	74,950	-94.7%
American/Mesa Air	75,100	-	-100.0%	75,100	3,484,900	4540.3%	3,484,900	4540.3%
SkyWest (American)	7,504,000	11,524,000	53.6%	104,340,000	118,108,000	13.2%	118,108,000	13.2%
DELTA	528,300,560	562,063,319	6.4%	6,903,014,715	7,188,519,370	4.1%	7,188,519,370	4.1%
SkyWest (Delta Connection)	199,302,185	216,060,155	8.4%	2,299,934,871	2,227,674,909	-3.1%	2,227,674,909	-3.1%
Compass (Delta Connection)	24,883,587	41,196,996	65.6%	124,251,046	431,064,918	246.9%	431,064,918	246.9%
FRONTIER	19,057,918	15,874,958	-16.7%	212,257,662	247,545,904	16.6%	247,545,904	16.6%

**SALT LAKE CITY INTERNATIONAL AIRPORT
LANDING ACTIVITY
TWELVE MONTHS ENDED DECEMBER 2018**

	December 2017	December 2018	CHANGE	YTD 2017	YTD 2018	CHANGE	12 MO ROLLING Ending 12/2018	% CHANGE
JETBLUE	35,123,400	30,573,000	-13.0%	357,632,626	389,059,200	8.8%	389,059,200	8.8%
KLM ROYAL DUTCH AIRLINES	-	-	0.0%	39,576,150	39,703,438	0.3%	39,703,438	0.3%
SOUTHWEST	114,962,000	112,442,400	-2.2%	1,433,784,000	1,432,703,200	-0.1%	1,432,703,200	-0.1%
UNITED	22,677,240	26,382,200	16.3%	308,558,220	321,780,280	4.3%	321,780,280	4.3%
GoJet	2,550,000	603,000	-76.4%	2,550,000	15,828,000	520.7%	15,828,000	520.7%
Express Jet	88,184	-	-100.0%	176,368	440,920	150.0%	440,920	150.0%
Mesa / United Express	1,875,000	3,675,000	96.0%	17,550,000	40,950,000	133.3%	40,950,000	133.3%
Republic Airways Holdings	942,701	3,157,026	234.9%	41,585,338	19,673,211	-52.7%	19,673,211	-52.7%
SkyWest (United Express)	29,236,626	28,285,089	-3.3%	305,986,231	322,504,042	5.4%	322,504,042	5.4%
Trans States	-	-	0.0%	326,700	-	-100.0%	-	-100.0%
SUBTOTAL SCHEDULED CARRIERS:	1,082,915,426	1,139,603,778	5.2%	13,363,327,710	13,986,933,654	4.7%	13,986,933,654	4.7%
CHARTER CARRIERS								
ALLEGiant AIR	-	-	0.0%	1,395,000	822,929	-41.0%	822,929	-41.0%
BOMBARDIER	959,122	1,649,413	72.0%	8,721,912	8,689,411	-0.4%	8,689,411	-0.4%
BOUTIQUE AIR	1,107,840	-	-100.0%	14,251,070	2,685,810	-81.2%	2,685,810	-81.2%
DELTA PRIVATE JETS	357,700	-	-100.0%	5,541,550	4,347,950	-21.5%	4,347,950	-21.5%
EXECUTIVE JET MANAGEMENT	975,150	-	-100.0%	6,455,249	3,448,785	-46.6%	3,448,785	-46.6%
FLIGHT OPTIONS	267,085	-	-100.0%	2,352,425	664,790	-71.7%	664,790	-71.7%
KALITTA CHARTERS	15,300	-	-100.0%	362,740	643,120	77.3%	643,120	77.3%
KEYLIME AIR	31,724	95,172	200.0%	285,518	348,964	22.2%	348,964	22.2%
NETJETS	4,243,830	4,000,126	-5.7%	39,951,169	38,272,257	-4.2%	38,272,257	-4.2%
SIERRA PACIFIC	-	-	0.0%	855,000	985,000	15.2%	985,000	15.2%
SUN COUNTRY	1,462,700	-	-100.0%	3,510,300	877,800	-75.0%	877,800	-75.0%
SWIFT AIR	-	-	0.0%	1,171,925	598,000	-49.0%	598,000	-49.0%
VIRGIN AMERICA	995,386	-	-100.0%	8,399,603	142,198	-98.3%	142,198	-98.3%
XOJET	752,850	556,200	-26.1%	6,408,300	3,528,000	-44.9%	3,528,000	-44.9%
OTHER CHARTER	2,610,400	146,300	-94.4%	25,868,720	17,626,699	-31.9%	17,626,699	-31.9%
SUBTOTAL CHARTER CARRIERS:	13,779,087	6,447,211	-53.2%	125,530,481	83,681,713	-33.3%	83,681,713	-33.3%
CARGO CARRIERS								
AERO CHARTER & TRANSPORT	143,850	-	-100.0%	1,790,920	1,074,950	-40.0%	1,074,950	-40.0%
AIR TRANSPORT INTERNATIONAL	55,500	-	-100.0%	204,000	73,500	-64.0%	73,500	-64.0%
ALPINE AVIATION	1,016,800	2,474,800	143.4%	10,374,800	25,388,600	144.7%	25,388,600	144.7%
AMERIFLIGHT	4,294,844	2,784,680	-35.2%	45,786,644	34,707,264	-24.2%	34,707,264	-24.2%
ATLAS AIR	1,184,000	1,250,000	5.6%	11,112,000	17,084,000	53.7%	17,084,000	53.7%
CORPORATE AIR (BILLINGS)	1,113,500	1,105,000	-0.8%	11,313,500	12,418,500	9.8%	12,418,500	9.8%
EMPIRE	692,694	753,088	8.7%	7,490,499	7,652,119	2.2%	7,652,119	2.2%
FEDEX EXPRESS	60,005,500	63,137,200	5.2%	557,683,200	572,470,400	2.7%	572,470,400	2.7%
GEM AIR	642,000	776,500	21.0%	3,588,380	5,718,800	59.4%	5,718,800	59.4%
SOUTHERN AIR INC	5,122,586	5,408,071	5.6%	63,180,910	62,450,628	-1.2%	62,450,628	-1.2%
UPS	51,106,260	57,423,720	12.4%	407,633,720	463,016,520	13.6%	463,016,520	13.6%
WESTERN AIR EXPRESS	260,000	195,000	-25.0%	4,056,100	1,286,400	-68.3%	1,286,400	-68.3%
OTHER CARGO	809,213	283,000	-65.0%	3,263,807	700,708	-78.5%	320,708	-90.2%
SUBTOTAL CARGO CARRIERS:	126,446,747	135,591,059	7.2%	1,127,478,480	1,204,042,389	6.8%	1,203,662,389	6.8%
TOTAL LANDED WEIGHT	1,223,141,260	1,281,642,048	4.8%	14,616,928,671	15,274,657,756	4.5%	15,274,657,756	4.5%

**SALT LAKE CITY INTERNATIONAL AIRPORT
CARGO ACTIVITY REPORT
TWELVE MONTHS ENDED DECEMBER 2018**

	December 2017	December 2018	CHANGE	YTD 2017	YTD 2018	CHANGE	12 MO ROLLING Ending 12/2018	% CHANGE
ENPLANED CARGO								
PASSENGER CARRIERS								
ALASKA	14,063	10,618	-24.50%	178,924	241,174	34.79%	241,174	34.79%
Horizon Air / Alaska	95	-	-100.00%	1,023	249	-75.66%	249	-75.66%
Skywest / Alaska	-	-	0.00%	1,030	-	-100.00%	-	-100.00%
AMERICAN	43,442	21,852	-49.70%	281,121	460,805	63.92%	460,805	63.92%
American Eagle/Republic	-	-	0.00%	-	-	0.00%	-	0.00%
Compass	-	-	0.00%	-	-	0.00%	-	0.00%
Envoy Air (American)	-	-	0.00%	-	-	0.00%	-	0.00%
Mesa	-	-	0.00%	-	36	100.00%	36	100.00%
SkyWest (American)	-	-	0.00%	479	-	-100.00%	-	-100.00%
DELTA	1,312,477	841,828	-35.86%	13,484,171	11,288,392	-16.28%	11,288,392	-16.28%
KLM ROYAL DUTCH	-	-	0.00%	400,078	971,393	142.80%	971,393	142.80%
SOUTHWEST	259,363	268,243	3.42%	3,727,976	3,495,715	-6.23%	3,495,715	-6.23%
UNITED	3,886	6,222	60.11%	63,266	117,628	85.93%	117,628	85.93%
Others	-	-	0.00%	9,955	-	-100.00%	-	-100.00%
CARGO CARRIERS								
FEDEX EXPRESS*	8,789,656	9,094,252	3.47%	91,497,881	97,374,983	6.42%	97,374,983	6.42%
GEM AIR	83,263	93,249	11.99%	448,760	691,853	54.17%	691,853	54.17%
SOUTHERN AIR	313,424	421,929	34.62%	4,520,728	4,903,836	8.47%	4,903,836	8.47%
UPS	5,155,428	6,590,142	27.83%	47,999,530	47,315,865	-1.42%	47,315,865	-1.42%
MISC CARGO	1,104,421	1,374,037	24.41%	10,877,136	14,855,425	36.57%	14,855,425	36.57%
ABX AIR	-	5,781	100.00%	-	5,781	100.00%	5,781	100.00%
TOTAL ENPLANED CARGO	17,079,518	18,722,372	9.62%	173,492,058	181,717,354	4.74%	181,717,354	4.74%
DEPLANED CARGO								
PASSENGER CARRIERS								
ALASKA	30,759	10,975	-64.32%	297,163	277,589	-6.59%	277,589	-6.59%
Horizon Air / Alaska	773	-	-100.00%	5,805	3,176	-45.29%	3,176	-45.29%
Skywest / Alaska	368	-	-100.00%	7,168	1,386	-80.66%	1,386	-80.66%
AMERICAN	19,641	27,891	42.00%	408,959	378,690	-7.40%	378,690	-7.40%
American Eagle/Republic	-	-	0.00%	-	-	0.00%	-	0.00%
Compass	-	-	0.00%	6,826	88	-98.71%	88	-98.71%
Envoy Air (American)	-	-	0.00%	-	-	0.00%	-	0.00%
SkyWest (American)	52	1,438	2665.38%	6,440	7,101	10.26%	7,101	10.26%
DELTA	1,578,910	1,274,188	-19.30%	18,180,391	16,366,378	-9.98%	16,366,378	-9.98%
KLM ROYAL DUTCH	-	-	0.00%	894,108	1,310,703	46.59%	1,310,703	46.59%
SOUTHWEST	395,569	433,566	9.61%	4,650,999	4,449,858	-4.32%	4,449,858	-4.32%
UNITED	24,458	55,796	128.13%	322,991	426,546	32.06%	426,546	32.06%
Others	-	-	0.00%	43,330	1,480	-96.58%	1,480	-96.58%
CARGO CARRIERS								
FEDEX EXPRESS*	9,628,165	9,488,323	-1.45%	100,741,510	103,612,981	2.85%	103,612,981	2.85%
GEM AIR	19,438	17,177	-11.63%	219,693	229,086	4.28%	229,086	4.28%
SOUTHERN AIR	506,800	501,675	-1.01%	5,342,883	5,764,123	7.88%	5,764,123	7.88%
UPS	7,528,767	7,804,873	3.67%	69,415,941	70,213,802	1.15%	70,213,802	1.15%
MISC CARGO	284,237	1,014,192	256.81%	3,707,054	7,257,656	95.78%	7,257,656	95.78%
ABX AIR	-	43,498	100.00%	-	43,498	100.00%	43,498	100.00%
TOTAL DEPLANED CARGO	20,017,937	20,630,094	3.06%	204,251,261	210,300,643	2.96%	210,300,643	2.96%
TOTAL CARGO	37,097,455	39,352,466	6.08%	377,743,319	392,017,997	3.78%	392,017,997	3.78%

*FEDEX EXPRESS includes mail

SALT LAKE CITY DEPARTMENT OF AIRPORTS
(An Enterprise Fund of Salt Lake City Corporation)
Statements of Net Position
(Amounts in Thousands)

<i>As of December 31,</i>	2018	2017
ASSETS		
Current Assets		
Cash and cash equivalents	\$ 382,914	\$ 227,962
Restricted cash and cash equivalents	95,946	51,586
Restricted investments	380,586	-
Investments	15,902	11,526
Airline and rental fees receivable	17,298	18,747
Other assets	3,287	4,360
Total current assets	895,933	314,181
Noncurrent Assets		
Restricted cash and cash equivalents	696,945	853,594
Restricted investments	58,173	40,512
Investments	29,166	33,138
Other assets	1,973	2,000
Total noncurrent assets and investments	786,257	929,244
Capital assets		
Land	105,129	104,590
Building and improvements	1,419,580	1,369,273
Equipment	148,699	141,313
Construction in progress	1,242,020	613,080
Total capital assets - at cost	2,915,428	2,228,256
Less accumulated depreciation	1,017,730	955,616
Net capital assets	1,897,698	1,272,640
Total noncurrent assets	2,683,955	2,201,884
Total Assets	3,579,888	2,516,065
Deferred Outflows of Resources	6,741	11,948
Total Assets and Deferred Outflows of Resources	\$ 3,586,629	\$ 2,528,013

SALT LAKE CITY DEPARTMENT OF AIRPORTS
 (An Enterprise Fund of Salt Lake City Corporation)
Statements of Net Position
 (Amounts in Thousands)

<i>As of December 31,</i>	2018	2017
LIABILITIES		
Current Liabilities		
Accounts payable	\$ 51,618	\$ 4,177
Accrued compensation	1,226	1,044
Interest payable	32,159	25,000
Other accrued liabilities	3,813	5,266
Total current liabilities	88,816	35,487
Noncurrent Liabilities		
Revenue bonds payable	2,051,276	1,122,934
Noncurrent compensation liability	3,936	3,790
Net pension liability	20,449	27,424
Other accrued liabilities	35,966	15,456
Total noncurrent liabilities	2,111,627	1,169,604
Total Liabilities	2,200,443	1,205,091
Deferred Inflows of Resources	10,813	6,973
NET POSITION		
Net investment in capital assets	505,602	831,118
Restricted for		
Capital projects	40,928	73,534
Debt service	238,319	190,746
Unrestricted	590,524	220,551
Net Position	1,375,373	1,315,949
Total Liabilities, Deferred Inflows of Resources, and Net Position	\$ 3,586,629	\$ 2,528,013

SALT LAKE CITY DEPARTMENT OF AIRPORTS

(An Enterprise fund of Salt Lake City Corporation)

Statements of Revenues, Expenses, and Changes in Fund Net Position**(Amounts in Thousands)**

<i>for the six month period ended December,</i>	2018	2017
Operating Revenues		
Airline revenue	\$ 38,221	\$ 36,918
Terminal concessions	10,039	9,237
Landside concessions	35,285	33,379
Lease revenue	3,278	2,951
General aviation	1,504	1,323
State aviation tax	1,502	1,568
Other revenue	4,519	3,348
Operating revenues	94,348	88,724
Less airline revenue sharing	(6,627)	(6,457)
Total operating revenues	87,721	82,267
Operating Expenses		
Salaries and benefits	26,879	25,426
Materials and supplies	5,348	4,655
Maintenance contracts	5,309	4,447
Charges and services	4,880	4,688
Utilities	3,264	3,312
Inter-governmental	2,794	3,362
Other expenses	1,913	1,910
Total operating expenses before depreciation	50,387	47,800
Operating Income Before Depreciation	37,334	34,467
Depreciation Expense	31,988	32,332
Operating Income	5,346	2,135
Non-Operating Revenues (Expenses)		
Passenger facility charges	24,104	23,592
Customer facility charges	7,480	7,365
Interest income	14,153	8,975
Interest expense	(29,678)	(23,122)
Bond issuance costs	(3,130)	-
Gain on disposition of property and equipment	26	65
Net non-operating income	12,955	16,875
Capital Contributions		
Contributions and grants	2,428	9,131
Total capital contributions	2,428	9,131
Net Position		
Increase in net position	20,729	28,141
Net Position, beginning of period	1,354,644	1,287,808
Net Position, end of period	\$ 1,375,373	\$ 1,315,949

SALT LAKE CITY DEPARTMENT OF AIRPORTS

(An Enterprise fund of Salt Lake City Corporation)

OPERATING REVENUES AND EXPENDITURES TO BUDGET (Unaudited)

(Amounts in Thousands)

	Jul 2018 - Dec 2018		Jul 2018 - Dec 2018		SURPLUS/ DEFICIT	PERCENT CHANGE
	ACTUALS		BUDGET			
Revenues						
Landing Fees	\$	17,507	\$	16,560	\$ 947	5.7%
Fuel Farm		269		269	-	0.0%
Aircraft Remain Overnight Fees		125		163	(38)	-23.2%
Cargo Bldg. & Ramp Use Fee		786		796	(10)	-1.3%
Security Charges to TSA		358		378	(20)	-5.2%
Extraordinary Service Charges		22		43	(21)	-49.0%
Passenger Boarding Bridges		813		844	(31)	-3.7%
Tenant Telephone Fees		157		160	(3)	-1.6%
Terminal Rents		17,679		17,431	248	1.4%
General Aviation Hangars		622		627	(5)	-0.7%
FBO Hangars/Fuel Oil Royalty		205		199	6	3.1%
Flight Kitchens		1,048		558	490	87.9%
Other Buildings & Office Space		2,670		2,572	98	3.8%
Food Service & Vending		6,090		5,701	389	6.8%
News/Gift Shop		3,387		3,102	285	9.2%
Car Rental		14,485		13,431	1,054	7.9%
Leased Site Areas		1,339		1,213	126	10.4%
Auto Parking/Ground Transportation		20,778		19,044	1,734	9.1%
Advertising		562		540	22	4.1%
State Aviation Fuel Tax		1,502		1,459	43	2.9%
Military		77		77	0	0.1%
Glycol Recycling Sales		98		210	(112)	-53.3%
Auxiliary Airport Fuel Sales		677		520	157	30.3%
Other		3,092		772	2,320	300.6%
Less: Airline Revenue Sharing		(6,627)		(6,250)	(377)	6.04%
Total Operating Revenues		87,721		80,419	7,302	9.1%
Expenses						
Salary & Wages		18,747		18,088	(659)	-3.6%
Employee Benefits		8,784		8,846	62	0.7%
Maintenance Supplies		2,903		4,484	1,581	35.3%
Automotive Supplies		1,334		1,252	(82)	-6.5%
Other Supplies		1,110		1,081	(29)	-2.7%
Insurance Premiums		1,277		890	(387)	-43.5%
Janitorial Service		4,336		4,421	85	1.9%
Maintenance Contracts		973		1,112	139	12.5%
Other Contractual Services		3,543		3,685	142	3.8%
Professional & Tech Services		1,337		2,437	1,100	45.1%
Utilities		3,264		3,538	274	7.7%
Administrative Service Fee		660		807	147	18.3%
Aircraft Rescue Fire Fighting		2,134		2,333	199	8.5%
Other Expenses		636		1,445	809	56.0%
Contingency Reserve		-		479	479	100.0%
Operating Expenses Before Capitalized Salaries		51,038		54,898	3,860	7.0%
Capitalized Salaries		651		651	-	0.0%
Total Operating Expenses		50,387		54,247	3,860	7.1%
Operating Income	\$	37,334	\$	26,172	\$ 11,162	42.7%

SALT LAKE CITY DEPARTMENT OF AIRPORTS

(An Enterprise fund of Salt Lake City Corporation)

OPERATING REVENUES AND EXPENDITURES TO PRIOR YEAR (Unaudited)

(Amounts in Thousands)

	Jul 2018 - Dec 2018	Jul 2017 - Dec 2017	SURPLUS/ (DEFICIT)	PERCENT CHANGE
Revenues				
Landing Fees	\$ 17,507	\$ 16,193	\$ 1,314	8.1%
Fuel Farm	269	268	1	0.3%
Aircraft Remain Overnight Fees	125	148	(23)	-15.8%
Cargo Bldg. & Ramp Use Fee	786	792	(6)	-0.8%
Security Charges to TSA	358	563	(205)	-36.5%
Extraordinary Service Charges	22	43	(21)	-49.3%
Passenger Boarding Bridges	813	839	(26)	-3.2%
Tenant Telephone Fees	157	155	2	1.1%
Terminal Rents	17,679	17,404	275	1.6%
General Aviation Hangars	622	614	8	1.3%
FBO Hangars/Fuel Oil Royalty	205	180	25	14.1%
Flight Kitchens	1,048	927	121	13.0%
Other Buildings & Office Space	2,670	2,698	(28)	-1.0%
Food Service & Vending	6,090	5,585	505	9.0%
News/Gift Shops	3,387	3,174	213	6.7%
Car Rental	14,485	14,544	(59)	-0.4%
Leased Site Areas	1,339	1,207	132	10.9%
Auto Parking/Ground Transportation	20,778	18,812	1,966	10.5%
Advertising	562	477	85	17.9%
State Aviation Fuel Tax	1,502	1,568	(66)	-4.2%
Military	77	77	(0)	0.0%
Glycol Recycling Sales	98	187	(89)	-47.6%
ARFF Training	-	373	(373)	-100.0%
Auxiliary Airport Fuel Sales	677	530	147	27.8%
Other	3,092	1,367	1,725	126.1%
Less: Airline Revenue Sharing	(6,627)	(6,457)	(170)	2.6%
Operating Revenues	87,721	82,268	5,453	6.6%
Expenses				
Salary & Wages	\$ 18,747	\$ 17,745	\$ 1,002	5.6%
Employee Benefits	8,784	8,265	519	6.3%
Maintenance Supplies	2,903	2,643	260	9.8%
Automotive Supplies	1,334	1,328	6	0.5%
Other Supplies	1,110	684	426	62.3%
Insurance Premiums	1,277	1,338	(61)	-4.6%
Janitorial Service	4,336	3,602	734	20.4%
Maintenance Contracts	973	845	128	15.2%
Other Contractual Services	3,543	3,451	92	2.7%
Professional & Tech Service	1,337	1,237	100	8.1%
Utilities	3,264	3,312	(48)	-1.4%
Administrative Service Fee	660	826	(166)	-20.1%
Aircraft Rescue Fire Fighting	2,134	2,536	(402)	-15.8%
Other Expenses	636	572	64	11.2%
Operating Expenses Before Capitalized Salaries	51,038	48,384	2,654	5.5%
Capitalized Salaries	651	585	66	11.2%
Total Operating Expenses	50,387	47,799	2,588	5.4%
Operating Income	\$ 37,334	\$ 34,469	\$ 2,865	8.3%

DESIGN AND CONSTRUCTION REPORT

TABLE OF CONTENTS

- I. Area Map of Project Locations
- II. Project Schedule
- III. Construction Analysis
- IV. Design and Construction Report

SALT LAKE CITY DEPARTMENT OF AIRPORTS
February 13, 2019



Salt Lake City
International Airport

2018 - 2019 Project Legend

Airfield

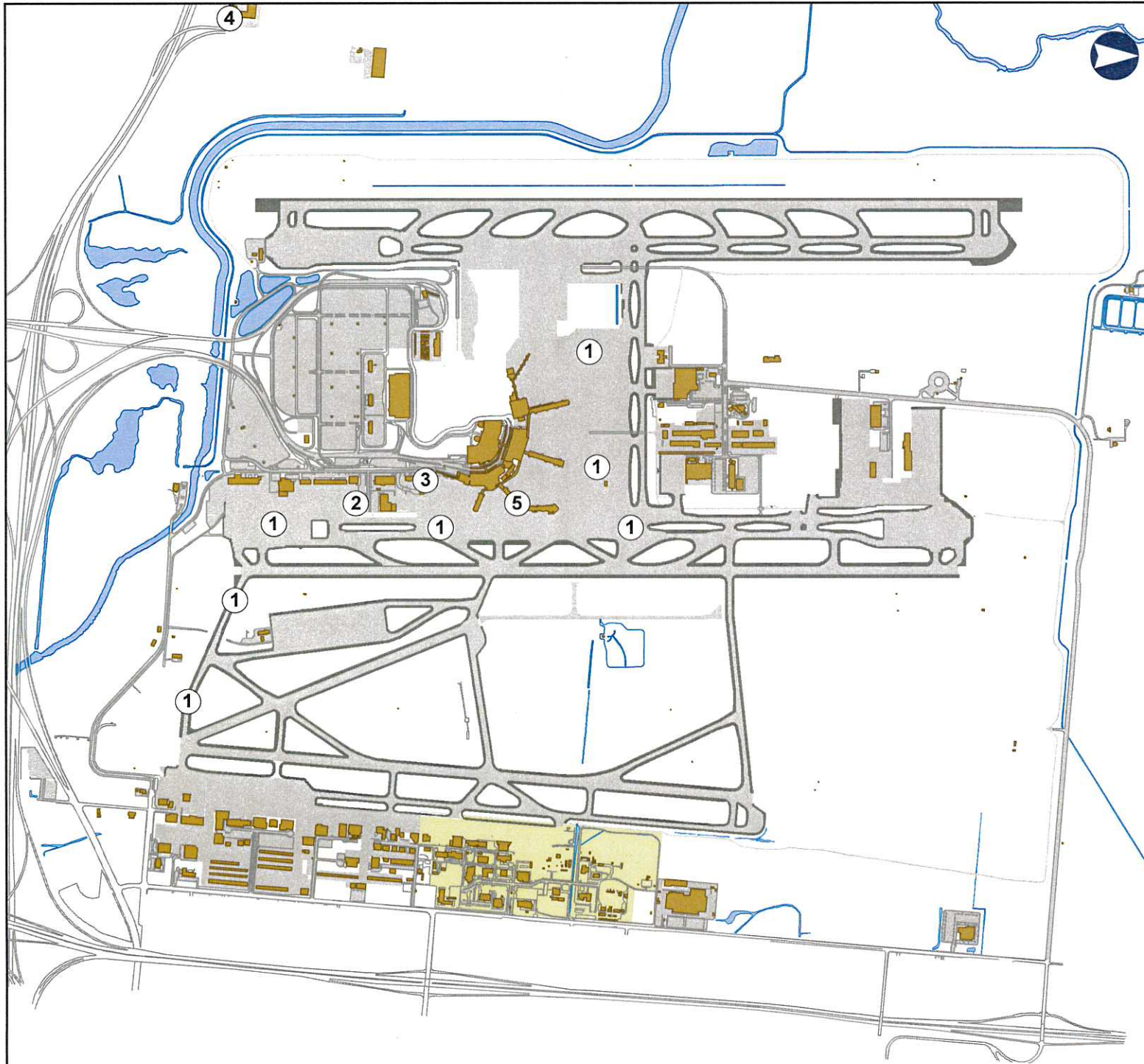
1. Airfield Lighting Wiring Rehabilitation Phases 2 & 3
2. Central Screening Warehouse

Landside

3. Police Station Demo and Paving
4. IC4 HVAC Replacement

Terminal

5. Concourse B5 Public Restroom Renovation



SALT LAKE CITY INTERNATIONAL AIRPORT
CONSTRUCTION PROGRAM
2016/2017 Construction Schedule

ID	Task Name	Start	Finish	2018												
				Sep '18	Oct '18	Nov '18	Dec '18	Jan '19	Feb '19	Mar '19	Apr '19	May '19	Jun '19			
1	Airfield	Thu 1/3/19	Fri 8/30/19													
2	(1) Airfield Lighting Wiring Rehabilitation Phases 2 & 3	Mon 4/1/19	Mon 7/8/19													
3	(2) Central Screening Warehouse	Thu 1/3/19	Fri 8/30/19													
4	(3) Police Station Demolition and Paving	Mon 3/4/19	Mon 6/3/19													
5	(4) IC4 HVAC Replacement	Fri 1/25/19	Fri 4/26/19													
6	Terminal	Fri 9/21/18	Mon 1/28/19													
7	(5) Concourse B5 Restroom Renovations	Fri 9/21/18	Mon 1/28/19													

Date: Wed 2/13/19

<p>Design Construction</p>	<p>DESIGN Inactive Milestone </p> <p>CONSTRUCTION Inactive Summary </p> <p>SCOPING Manual Task </p> <p>SUMMARY Duration-only </p> <p>Inactive Task Manual Summary Rollup </p>	<p>Manual Summary </p> <p>Start-only </p> <p>Finish-only </p> <p>Deadline </p>
----------------------------	--	--

**SALT LAKE CITY DEPARTMENT OF AIRPORTS
CONSTRUCTION PROJECT STATUS 2018 - 2019**

#	PROJECT NAME	ENGINEER'S ESTIMATE	BID AMOUNT	APPROVED CHANGE ORDERS TO DATE	% OF COST INCREASE TO DATE	STATUS	CONTRACTOR
CONSTRUCTION							
2	Central Screening Warehouse	\$ 4,771,730	\$ 4,237,990			on schedule	Paulsen Construction
3	Police Station Demolition and Paving	\$ 587,685	\$ 198,000			on schedule	Paulsen Construction
4	IC4 HVAC Replacement	\$ 313,789	\$ 380,000			on schedule	Webb Brothers Construction
5	Concourse B5 Restrooms Renovations	\$ 1,114,578	\$ 948,800	\$ 129,395**	13.64%	complete	AIS Commerical Inc.
	Sub-Total	\$ 6,787,782	\$ 5,764,790	\$ 129,395	2.24%		
DESIGN/BID/AWARD							
1	Airfield Lighting Wiring Rehabilitation Phases 2 & 3	\$ 2,580,000	\$ 2,222,222			award	Royal Electric
	Total	\$ 9,367,782	\$ 7,987,012	\$ 129,395	1.62%		
**Per airline request, additional temporary restroom facilities for airline employees have been deployed.							
Budget amount, Engineer's estimate, and Bid amount is based on construction cost only.							

DESIGN AND CONSTRUCTION REPORT

DESIGN/BID/AWARD

- (1) **Airfield Lighting Wiring Rehabilitation Phases 2 & 3** - The Contractor, Royal Electric will begin construction in the spring of 2019 due to the unavailability of construction materials in the fall of 2018. Shipments of wire and other construction materials received by the Contractor during the fourth quarter of 2018 and the first quarter of 2019 are securely stored on SLCDA property.

CONSTRUCTION

- (2) **Central Screening Warehouse** - The Contractor has completed the demolition of the existing United Cargo building and existing underground utilities. Excavation and installation of new site utilities is underway. Excavation for the building footings and foundations is ongoing. The building permit will be issued the week of February 18, 2019.
- (3) **Police Station Demolition and Paving** - The Contractor, Paulsen Construction was issued an administrative notice to proceed on February 13, 2019. Submittals are currently being reviewed by SLCDA Engineering for approval.
- (4) **IC4 HVAC Replacement** - The Contractor, Webb Brothers Construction was issued a notice to proceed for this project on January 25, 2019. HVAC units are currently being fabricated. Units are anticipated to be on site the week of March 25, 2019.
- (5) **Concourse B5 Public Restrooms Renovation** - Substantial completion for this project was issued to the Contractor on January 23, 2019. All punch list items have been completed. Final close-out documents are being prepared.



**February 2019
Media Clippings**

Advisory Board Meeting

<https://slcairport.com/assets/pdfDocuments/AABoard/MediaClippingsFeb2019.pdf>

Compiled by P.R. & Marketing Dept.