



Advisory Board  
Meeting

May 19, 2021

Agenda



## Advisory Board Meeting

May 19, 2021

**This meeting will be an electronic meeting pursuant to the attached written statement from Board Chair Steve Price.**

To access the meeting please visit:

<https://saltlakecity.webex.com/saltlakecity/onstage/g.php?MTID=ee409ad3aa93b45e7d1cea959c4e4e43b>



## **ADVISORY BOARD MEETING AGENDA**

19 May 2021

8:00 A.M.

### CONSENT

- A. Minutes of the 21 April 2021 Meeting

### DISCUSSION

- A. Director's Report – Bill Wyatt, Executive Director, SLCDA
- B. Airport Redevelopment Program (ARP) Update – Mike Williams, ARP Director, SLCDA
- C. Call for a Motion to Adopt Rule Permitting Electronic Meetings – Steve Price, Chair
- D. Public Meetings Act Online Training – Steve Price, Chair

### INFORMATION ITEMS

Financial Report – March 2021  
Air Traffic Statistics – March 2021  
Construction Report – May 2021

### MEDIA CLIPPINGS

Media Clippings – May 2021

The next meeting will be held on **Wednesday, June 16, 2021**, at 8:00 a.m. Meetings are usually held in the Board Room unless otherwise posted. People with disabilities may make requests for reasonable accommodations no later than 48 hours in advance in order to attend this Airport Advisory Board Meeting. Accommodations may include alternate formats, interpreters, and other auxiliary aids. This is an accessible facility. For questions or additional information, please contact Tina Nee at 801-575-2042.



I, J. Steven Price, Chair of The Salt Lake City Airport Advisory Board, hereby determine that conducting public meetings at an anchor location presents a substantial risk to the health and safety of those who may be present at the anchor location. Due to the Center for Disease Control and Prevention (CDC) social distancing requirements, I find that conducting a meeting at the anchor location constitutes a substantial risk to the health and safety of those who may be present at the location.

Dated this   14   day of   May  , 2021.

A handwritten signature in blue ink, appearing to read "J. Steven Price", is written above a horizontal line.

J. Steven Price

Chair, Salt Lake City Airport Advisory Board



Advisory Board  
Meeting

May 19, 2021

Minutes

# **SALT LAKE CITY DEPARTMENT OF AIRPORTS MINUTES OF ADVISORY BOARD MEETING**

April 21, 2021

Members Present: Steve Price, Chair  
Karen Mayne  
Larry Pinnock  
Cyndy Miller  
Arlyn Bradshaw  
Roger Boyer  
Dirk Burton  
Tye Hoffmann

City Council Office: James Rogers  
Sam Owen  
Russell Weeks

Mayor's Office: Rachel Otto

Department of Airports: Bill Wyatt, Executive Director  
Tina Nee, Administration  
Brian Butler, Chief Financial Officer  
Kevin Robins, Director of Engineering  
Shane Andreasen, Director of Admin and Commercial Services  
Ed Clayson, Director of Maintenance  
Treber Anderson, Director of Operations  
Ed Cherry, Director of IT  
Medardo Gomez, ORAT Director  
Brady Fredrickson, Director of Planning and Environmental  
Pete Higgins, Chief Operations Officer  
Mike Williams, ARP Program Director  
Stefhan Bennett, SLC Police Captain  
Rick Stratton, SLCFD Battalion Chief  
Nancy Volmer, Communication and Marketing Director  
Catherine Brabson, City Attorney  
Megan DePaulis, City Attorney

Other: Bob Bergman, Lobbyist  
Steve Domino, RS&H  
Tyson Jackson, KUTV2  
Jim Lohse, FFKR  
Shawn Milne, Tooele County  
Brian Bangerter, HNTB  
Andrew Scanlon, Kimley-Horn  
Kory Cox, HDR, Inc.  
Andy C

Steve Price called the meeting, held via Web-Ex to order at 8:01 a.m.

## AGENDA

### **A. Minutes**

A motion was made by Larry Pinnock and seconded by Karen Mayne to approve the minutes of March 17, 2021 as presented. All votes were affirmative; motion passed.

### **B. Director's Report**

Bill Wyatt, Executive Director, updated the Airport Advisory Board regarding current events.

Bill Wyatt provided a brief update on passenger volumes, financial position, and construction and a bird strike incident.

Mayor Burton asked if South Valley Regional Airport will see any of the Cares Act Funding.

Bill Wyatt answered yes.

Steve Price asked as to the type of agreements come with the CAREs Act Funding.

Bill Wyatt indicated they are reimbursable grants.

Larry Pinnock asked the number of bird strikes that occur each year.

Bill Wyatt indicated he did not know offhand; the information would be provided but it is watched very closely by the airport and the FAA.

### **C. Airport Redevelopment Program (ARP) Update – Mike Williams, ARP Director, SLCDA**

Mike Williams, Airport Redevelopment Program (ARP) Director, presented an update on the ARP (presentation on file). Main points included were:

- Project statistics
- Safety and Schedule Stats, and Cost Summary
- Project statistics
- CGMP #5 – Terminal/South Concourse West/Gateway status
- CGMP #6 – Roadways/Parking Garage/Central Utility Plant status
- CGMP #7 – Baggage Handling System status
- CGMP #9A – SCW Apron Paving and Hydrant Fueling status
- CGMP #16 – NCP Phase 1
- CGMP #17 – NCP Baggage Handling System Phases 1 & 2 status
- CGMP #18 – NCP Apron Paving/ Hydrant Fueling
- Tracking Budget

- Job progress photos

Steve Price if steel packages were on time and if prices are being held. He also asked about concrete powder.

Mike Williams answered it is all a big mess right now. There are currently 38 ships waiting to port through Suez, but it is starting to clear. All steel was pre-purchased for the current construction. May see some wood price increases. There are concerns for future steel. HDJV is working on cement powder issues. It is affecting the west coast more than the east coast.

Roger Boyer asked when the central tunnel will be completed.

Mike Williams indicated the latter part of 2022 with the central node completion in late 2024.

#### **D. Concessions Update – Shane Andreasen, Director of Administration and Commercial Services, SLCDA**

Shane Andreasen, Director of Administration and Commercial Services presented an update to the airport concessions program (presentation on file.) Main points included were:

- Overview
- Current Program Offering – Terminal & Concourse A
- Current Program Offering – Concourse B
- Coming Soon and Deferred
- SLCtoGo
- Looking Back and Move Forward
- Phase II Program (Concourse A East)
- Phase III Program (Central Node and Concourse B East)
- New SLC Concessions Total Program Summary

There were no questions for Shane Andreasen.

#### **E. Master Plan Update – Brady Fredrickson, Planning Director, SLCDA and Steve Domino, RS&H**

Brady Fredrickson, Planning Director and Steve Domino, RS&H presented an update on the Master Plan (presentation on file). Main points included were:

- Master Plan Schedule
- SLC Long Range Proportional Requirements
- Solutions
- Implementation
- Next Steps

Karen Mayne asked how the order of major programs is determined.



Steve Domino indicated safety is always taken into consideration first. Demands, such as parking also trigger considerations.

Roger Boyer asked why the landside estimate is \$244M.

Brady Fredrickson answered this is the total cost of the expansion of the parking structure and rental car facilities. Surface Parking will be completed first.

Steve Price adjourned the meeting at 9:32 a.m.

\_\_\_\_\_  
J. Steven Price, Chair

\_\_\_\_\_  
Date

\_\_\_\_\_  
Erin Mendenhall, Mayor

\_\_\_\_\_  
Date



Advisory Board  
Meeting

May 19, 2021

Discussion Items

**AGENDA:** DISCUSSION ITEM (A)  
**DATE:** 19 May 2021  
**TO:** Airport Advisory Board  
**FROM:** Bill Wyatt, Executive Director  
**SUBJECT:** **Executive Director's Report**

---

---

Bill Wyatt will present a monthly informational report to the Board, which may include:

1. ARP progress
2. Ground transportation update
3. Concessions and rental cars
4. Airport safety and security
5. Airport facilities and operations
6. General aviation
7. Passenger and airport users
8. Environmental matters
9. Financial condition
10. Legislative issues
11. Airlines
12. Communications and marketing

**AGENDA:** DISCUSSION ITEM (B)  
**DATE:** 19 May 2021  
**TO:** Airport Advisory Board  
**FROM:** Bill Wyatt, Executive Director  
**SUBJECT:** **Airport Redevelopment Program Update**

---

Mike Williams, Airport Redevelopment Program (ARP) Director, will present an update on the SLC Airport Redevelopment Program (presentation on file).



# AIRPORT REDEVELOPMENT PROGRAM

Status Update 05/19/2021



# Safety and Schedule



## Safety Statistics

### Numbers for the Current Month

- OSHA National Average
  - Lost Time Rate 1.80 Recordable Rate 3.10
- TRP Metrics
  - 8,592,315 Total Trade Hours worked
  - Lost Time Rate 0.25 Recordable Rate 2.35

### Numbers for the Program Overall

- ARP Metrics
  - 10,753,349 Total Trade Hours worked

### Schedule Status - Critical Path

- Completion of Concourse 'A' East Stone Column and Composite Pile Driving
- Completion of Central Tunnel Fuel Line Tie-in and Start Removal of Land Bridge
- Concourse 'A' East Pile Cap and Grade Beam Excavation, Formwork and Concrete Placement
- Start of Concourse 'A' East Slab-on-Grade Concrete Placement
- Overall Program is on schedule

# Overall Budget Status



Construction Budget April 2021	Budget 03/11/21 FOC	Committed Mar-21	Commitments Apr-21	Revised Commitments	Earned to Date	Estimate at Completion
Closed CGMPs 01, 03, 04, 09 & 15	\$217,279,720	\$217,279,720	\$0	\$217,279,720	\$217,279,720	\$217,279,720
CGMP 02 HDJV General Conditions Services	\$141,545,451	\$135,145,451	\$0	\$135,145,451	\$97,028,950	\$141,545,451
CGMP 05 Terminal/SCW/Gateway	\$1,042,670,036	\$1,042,670,036	\$0	\$1,042,670,036	\$1,034,774,842	\$1,042,670,036
CGMP 06 Parking Garage, Roadways, CUP	\$405,856,439	\$405,856,439	\$0	\$405,856,439	\$397,938,496	\$405,856,439
CGMP 07 TRP Baggage Handling System	\$96,578,430	\$96,578,430	\$0	\$96,578,430	\$96,146,064	\$96,578,430
CGMP 09A Apron Paving & Fueling/SCW	\$79,748,407	\$79,748,407	\$0	\$79,748,407	\$79,232,499	\$79,748,407
CGMP 10 South Concourse East/Tunnel Shell	\$461,505,309	\$460,608,277	\$0	\$460,608,277	\$69,960,474	\$461,505,309
CGMP 11 Apron Paving & Fueling SCE	\$223,088,239	\$191,182,465	\$0	\$191,182,465	\$25,494,217	\$223,088,239
CGMP 12 Existing Structure Demolition	\$35,772,132	\$35,760,124	\$0	\$35,760,124	\$27,947,015	\$35,772,132
CGMP 13 AOJV Preconstruction Services	\$14,046,688	\$14,046,688	\$0	\$14,046,688	\$14,046,688	\$14,046,688
CGMP 14 AOJV General Conditions Ph 1	\$93,384,788	\$47,006,676	\$0	\$47,006,676	\$46,122,320	\$93,384,788
CGMP 16 North Concourse & Mid-Tunnel Ph 1	\$300,786,053	\$300,786,053	\$0	\$300,786,053	\$294,565,694	\$300,786,053
CGMP 17 NCP Baggage Handling System	\$52,756,826	\$52,756,826	\$0	\$52,756,826	\$30,358,325	\$52,756,826
CGMP 18 NCP Apron Paving & Fueling Ph 1	\$91,949,310	\$91,949,310	\$0	\$91,949,310	\$82,055,782	\$91,949,310
CGMP 19 North Concourse & C-Tunnel Ph 2	\$227,690,446	\$28,647,982	\$0	\$28,647,982	\$1,433,782	\$227,690,446
CGMP 20 NCP Apron Paving & Jet Fuel Ph 2	\$44,856,288	\$0	\$0	\$0	\$0	\$44,856,288
Security Checkpoint Equipment	\$11,751,472	\$11,751,472	\$0	\$11,751,472	\$7,848,061	\$11,751,472
Reduntant Fuel Main	\$12,500,000	\$0	\$0	\$0	\$0	\$12,500,000
Taxilane X-X Construction	\$23,856,270	\$0	\$0	\$0	\$0	\$23,856,270
<b>Total Program Construction</b>	<b>\$3,577,622,304</b>	<b>\$3,211,774,356</b>	<b>\$0</b>	<b>\$3,211,774,356</b>	<b>\$2,522,232,929</b>	<b>\$3,577,622,304</b>
TRP Owner Procurement	\$5,215,472	\$5,215,472	\$0	\$5,215,472	\$4,808,421	\$5,215,472
NCP Owner Procurement	\$2,655,266	\$2,655,266	\$0	\$2,655,266	\$1,860,182	\$2,655,266
TRP Soft Cost	\$340,424,371	\$289,721,317	\$624,954	\$290,346,271	\$270,863,010	\$340,424,371
NCP Soft Cost	\$170,729,546	\$124,749,955	\$630,626	\$125,380,581	\$87,998,682	\$170,729,546
<b>Total Program Soft Cost</b>	<b>\$519,024,655</b>	<b>\$422,342,010</b>	<b>\$1,255,580</b>	<b>\$423,597,590</b>	<b>\$365,530,295</b>	<b>\$519,024,655</b>
TRP Owner Reserve	\$1,491,654					\$1,491,654
NCP Owner Reserve	\$2,371,101					\$2,371,101
<b>Total Program Owner Reserve</b>	<b>\$3,862,755</b>	<b>\$0</b>	<b>\$0</b>	<b>\$0</b>	<b>\$0</b>	<b>\$3,862,755</b>
<b>Total ARP Program Budget</b>	<b>\$4,100,509,714</b>	<b>\$3,634,116,366</b>	<b>\$1,255,580</b>	<b>\$3,635,371,946</b>	<b>\$2,887,763,224</b>	<b>\$4,100,509,714</b>

# Post Opening Day Special Projects

## Passenger Board Bridge Comfort

- Scope is to Temper the Air with both Heating and Cooling at all Gates
- Installation May through early Fall dependent on Gate Availability
- 16 Gates out of 25 Concourse 'A' Gates Completed

## Passenger Board Bridge Motorized Baggage Conveyors

- Motorized Baggage Conveyors that Replace the Manual Slides and the 'Bag Buddies' (Elevators for Planeside Bags) at all Gates
- Installation May through June dependent on Gate Availability
- All Concourse 'B' Gates Completed
- 2 Gates out of 25 Concourse 'A' Gates Completed

## Wayfinding Signage and Displays

- Terminal/Concourses/Gateway – Continue to add a Sign if the need arises



# Concourse 'A' East/ Central Tunnel/Airfield

## Central Tunnel Concrete Structure

- Excavation Nearly Complete at North End
- Production Pile Driving Underway – 75% Complete (Total 845)
- Completed First Mud-Slab Concrete Placement and Started Waterproofing

## Concourse 'A' East

- Stone Columns 100% Complete (Total 1,664)
- Production Pile Driving Underway – 79% Complete (Total 993)
- Underground Mechanical, Electrical and Plumbing Underway
- Started Placing Concrete Pile Caps and Grade Beams

# Concourse 'A' East/ Central Tunnel/Airfield

## Airfield

- Site Utilities Progressing
- Hydrant Fuel System Pipe and Fuel Vault Installation Progressing
- Started Placing Apron Pavement

## Hardstand Expansion – Concourse 'B' Lower Level Holdroom

- Completed Temporary Removal of Baggage Equipment
- Started Underground Plumbing for Restrooms

# Phase 2 East Construction Site



# Concourse 'A' East



Stone Columns Area E



Pile Cap Sheer Lug Assembly



SCE Pile Cap & Grade Beam Formwork



SCE Pile Cap & Formwork Assemblies

# Airfield Construction



Fuel Line Tie-in



On-site Concrete Crushing continues

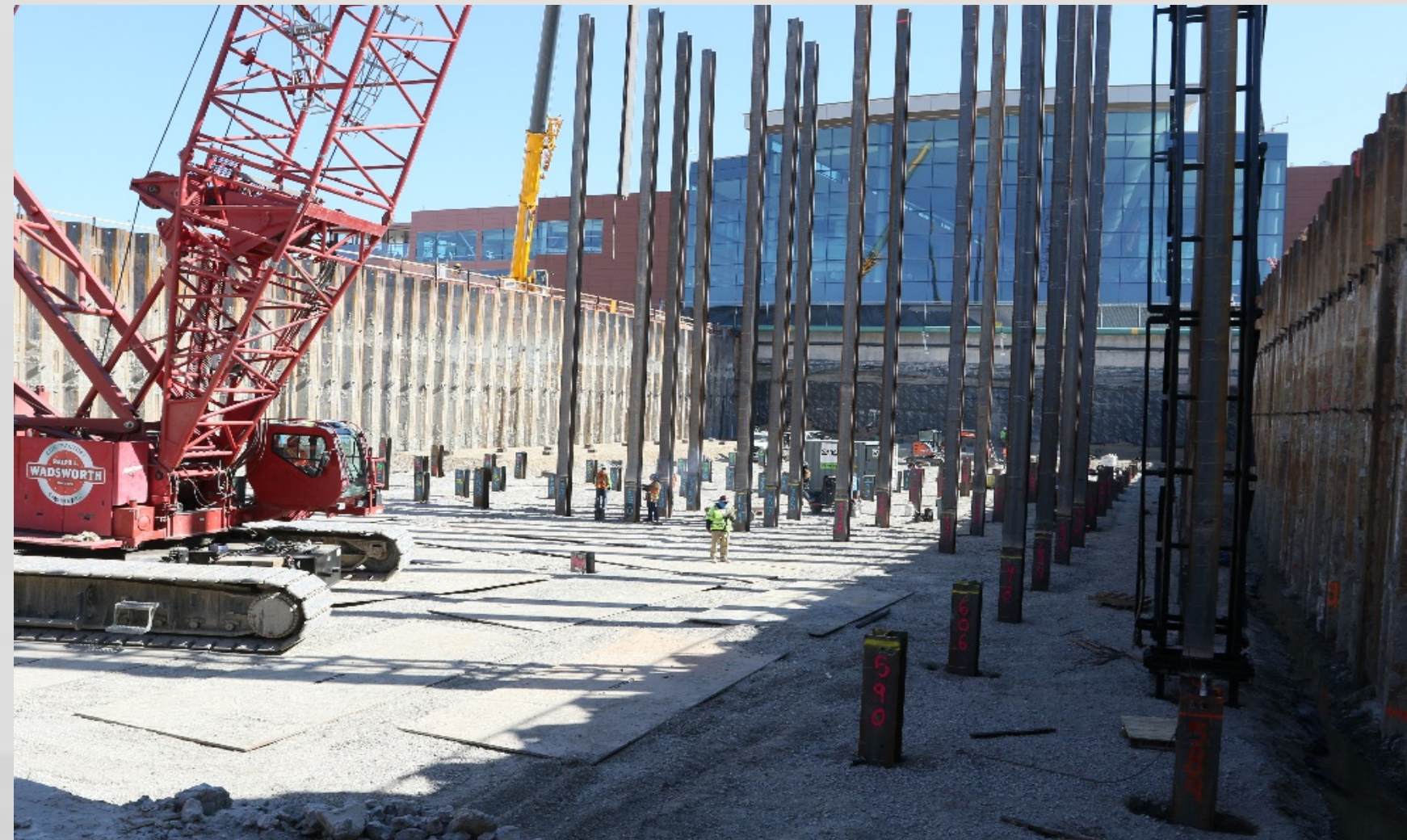


Electrical Ductbank Tie-ins



Area 1 60-inch Storm Line

# Central Tunnel



H-Pile Driving Area C



H-Pile Driving Complete Areas C & D



H-Pile Driving Area B



Concourse B Basement / Area G Excavation

# Concourse 'B' Lower Level Hardstand Holdroom



BHS Conveyor Removal



BHS Catwalk Removal



BHS Bollard Removal



Holdroom Area Prep

# Landside Construction



TRAX Line



TRAX Platform



Electrical Ductbank excavation along 3700 W



Electrical Ductbank installation along 3700 W



# Central Tunnel Aerial



Central Tunnel Looking South



Questions?

**AGENDA:** DISCUSSION ITEM (C)  
**DATE:** 19 May 2021  
**TO:** Airport Advisory Board  
**FROM:** Bill Wyatt, Executive Director  
**SUBJECT:** **Motion to Approve Rule Permitting Electronic Meetings**

---

Pursuant to City Code 2.14.060(A) and Utah Code section 52-4-207(2), the Board hereby adopts a rule permitting electronic meetings of the Airport Advisory Board, regardless of whether a quorum is present at an anchor location, so long as such meetings comply with the Open and Public Meetings Act.

**AGENDA:** DISCUSSION ITEM (D)  
**DATE:** 19 May 2021  
**TO:** Airport Advisory Board  
**FROM:** Bill Wyatt, Executive Director  
**SUBJECT:** **OPMA Training**

---

Steve Price, Board Chair will discuss the requirements for Open and Public Meetings Act Training required by the Board.



Advisory Board  
Meeting

April 21, 2021

Information

**SALT LAKE CITY DEPARTMENT OF AIRPORTS**  
**(An Enterprise Fund of Salt Lake City Corporation)**  
**Statements of Net Position (Unaudited)**  
**(Amounts in Thousands)**

<i>As of March 31,</i>	<b>2021</b>	<b>2020</b>
<b>ASSETS</b>		
<b>Current Assets</b>		
Cash and cash equivalents	\$ 122,595	\$ 203,888
Restricted cash and cash equivalents	20,570	233,525
Restricted investments	29,907	280,187
Investments	-	14,930
Airline and rental fees receivable	20,798	16,500
Loans receivable	6,850	-
Other assets	3,206	4,656
<b>Total current assets</b>	<b>203,926</b>	<b>753,686</b>
<b>Noncurrent Assets</b>		
Restricted cash and cash equivalents	100,047	66,775
Restricted investments	53,952	61,300
Investments	921	31,541
Loans receivable	25,071	-
Other assets	9,594	1,573
<b>Total noncurrent assets and investments</b>	<b>189,585</b>	<b>161,189</b>
<b>Capital assets</b>		
Land	111,696	105,129
Building and improvements	3,960,814	1,415,726
Equipment	169,490	152,311
Construction in progress	252,794	2,151,462
<b>Total capital assets - at cost</b>	<b>4,494,794</b>	<b>3,824,628</b>
Less accumulated depreciation	1,167,182	1,083,078
<b>Net capital assets</b>	<b>3,327,612</b>	<b>2,741,550</b>
<b>Total noncurrent assets</b>	<b>3,517,197</b>	<b>2,902,739</b>
<b>Total Assets</b>	<b>3,721,123</b>	<b>3,656,425</b>
<b>Deferred Outflows of Resources</b>	<b>4,521</b>	<b>7,002</b>
<b>Total Assets and Deferred Outflows of Resources</b>	<b>\$ 3,725,644</b>	<b>\$ 3,663,427</b>

**SALT LAKE CITY DEPARTMENT OF AIRPORTS****(An Enterprise Fund of Salt Lake City Corporation)****Statements of Net Position (Unaudited)****(Amounts in Thousands)**

<i>As of March 31,</i>	<b>2021</b>	<b>2020</b>
<b>LIABILITIES</b>		
<b>Current Liabilities</b>		
Accounts payable	\$ 15,729	\$ 50,891
Accrued compensation	2,398	2,277
Interest payable	23,194	23,194
Other accrued liabilities	49,142	10,295
<b>Total current liabilities</b>	<b>90,463</b>	<b>86,657</b>
<b>Noncurrent Liabilities</b>		
Revenue bonds payable	2,038,302	2,045,658
Noncurrent compensation liability	3,801	3,556
Net pension liability	8,431	17,737
Other accrued liabilities	50,113	61,891
Line of credit	134,600	-
<b>Total noncurrent liabilities</b>	<b>2,235,247</b>	<b>2,128,842</b>
<b>Total Liabilities</b>	<b>2,325,710</b>	<b>2,215,499</b>
<b>Deferred Inflows of Resources</b>		
Deferred inflows - revenue collected in advance	6,014	3,013
Deferred inflows - pension	4,993	652
<b>Total Deferred Inflows of Resources</b>	<b>11,007</b>	<b>3,665</b>
<b>NET POSITION</b>		
Net investment in capital assets	1,454,405	1,155,353
Restricted for		
Capital projects	39,371	89,552
Debt service	165,103	220,109
Unrestricted	(269,952)	(20,751)
<b>Net Position</b>	<b>1,388,927</b>	<b>1,444,263</b>
<b>Total Liabilities, Deferred Inflows of Resources, and Net Position</b>	<b>\$ 3,725,644</b>	<b>\$ 3,663,427</b>

**SALT LAKE CITY DEPARTMENT OF AIRPORTS**

(An Enterprise fund of Salt Lake City Corporation)

**Statements of Revenues, Expenses, and Changes in Fund Net Position (Unaudited)**

(Amounts in Thousands)

<i>for the Nine month period ended March,</i>	<b>2021</b>	<b>2020</b>
<b>Operating Revenues</b>		
Airline revenue	\$ 85,189	\$ 66,588
Terminal concessions	6,247	15,398
Landside concessions	31,453	53,655
Lease revenue	4,791	5,020
General aviation	2,183	2,301
State aviation tax	1,383	2,121
Other revenue	3,905	3,837
Operating revenues	135,151	148,920
Less airline revenue sharing	(4,304)	(10,973)
Total operating revenues	130,847	137,947
<b>Operating Expenses</b>		
Salaries and benefits	37,277	36,213
Materials and supplies	6,522	9,535
Maintenance contracts	8,009	8,306
Charges and services	17,145	7,775
Utilities	4,440	5,245
Inter-governmental	11,839	11,207
Other expenses	3,181	2,630
Total operating expenses before depreciation	88,413	80,911
<b>Operating Income Before Depreciation</b>	42,434	57,036
<b>Depreciation Expense</b>	86,428	49,635
<b>Operating Income (Loss)</b>	(43,994)	7,401
<b>Non-Operating Revenues (Expenses)</b>		
Passenger facility charges	17,527	38,308
Customer facility charges	5,788	11,702
Interest income	1,515	16,244
Interest expense	(67,821)	(67,898)
Bond issuance costs	(250)	-
Other revenue (expenses), net	122	2,104
Net non-operating income (loss)	(43,119)	460
<b>Capital Contributions</b>		
Contributions and grants	45,468	19,250
Total capital contributions	45,468	19,250
<b>Net Position</b>		
Increase (decrease) in net position	(41,645)	27,111
Net Position, beginning of period	1,430,572	1,417,152
Net Position, end of period	\$ 1,388,927	\$ 1,444,263



**SALT LAKE CITY DEPARTMENT OF AIRPORTS**  
(An Enterprise fund of Salt Lake City Corporation)  
**OPERATING REVENUES AND EXPENDITURES TO BUDGET (Unaudited)**  
(Amounts in Thousands)

	Jul 2020 - Mar 2021 ACTUALS	Jul 2020 - Mar 2021 BUDGET	SURPLUS/ DEFICIT	PERCENT CHANGE
<b>Revenues</b>				
Landing Fees	\$ 36,681	\$ 44,240	\$ (7,559)	-17.1%
Fuel Farm	697	404	293	72.4%
Aircraft Remain Overnight Fees	367	181	186	102.6%
Cargo Bldg. & Ramp Use Fee	1,175	1,258	(83)	-6.6%
Security Charges to TSA	437	595	(158)	-26.6%
Extraordinary Service Charges	89	50	39	79.0%
Passenger Boarding Bridges	1,098	1,433	(335)	-23.4%
Tenant Telephone Fees	101	84	17	19.9%
Terminal Rents	42,984	70,173	(27,189)	-38.7%
General Aviation Hangars	896	947	(51)	-5.4%
FBO Hangars/Fuel Oil Royalty	442	391	51	13.1%
Flight Kitchens	765	875	(110)	-12.6%
Other Buildings & Office Space	3,883	4,160	(277)	-6.7%
Food Service & Vending	4,039	6,647	(2,608)	-39.2%
News/Gift Shop	1,892	3,825	(1,933)	-50.5%
Car Rental	15,712	15,885	(173)	-1.1%
Leased Site Areas	2,711	2,121	590	27.8%
Auto Parking/Ground Transportation	15,726	25,238	(9,512)	-37.7%
Advertising	316	569	(253)	-44.5%
State Aviation Fuel Tax	1,383	1,386	(3)	-0.2%
Military	118	118	-	0.0%
Glycol Recycling Sales	181	208	(27)	-13.1%
Auxiliary Airport Fuel Sales	845	935	(90)	-9.6%
Other	2,613	4,966	(2,353)	-47.4%
Less: Airline Revenue Sharing	(4,304)	(6,059)	1,755	-28.97%
<b>Total Operating Revenues</b>	<b>130,847</b>	<b>180,630</b>	<b>(49,783)</b>	<b>-27.6%</b>
<b>Expenses</b>				
Salary & Wages	26,455	27,986	1,531	5.5%
Employee Benefits	11,704	12,528	824	6.6%
Maintenance Supplies	3,669	6,871	3,202	46.6%
Automotive Supplies	1,872	3,186	1,314	41.2%
Other Supplies	981	3,053	2,072	67.9%
Insurance Premiums	2,520	2,853	333	11.7%
Janitorial Service	6,965	9,444	2,479	26.2%
Maintenance Contracts	1,043	2,419	1,376	56.9%
Other Contractual Services	7,454	13,654	6,200	45.4%
Professional & Tech Services	9,691	14,269	4,578	32.1%
Utilities	4,440	5,691	1,251	22.0%
Administrative Service Fee	1,667	1,378	(289)	-21.0%
Aircraft Rescue Fire Fighting	3,946	3,946	(0)	0.0%
Police Services	6,225	6,225	(0)	0.0%
Other Expenses	662	2,143	1,481	69.1%
Contingency Reserve	-	750	750	100.0%
Operating Expenses Before Capitalized Salaries	89,294	116,396	27,102	23.3%
Capitalized Salaries	881	881	-	0.0%
<b>Total Operating Expenses</b>	<b>88,413</b>	<b>115,515</b>	<b>27,102</b>	<b>23.5%</b>
<b>Operating Income</b>	<b>\$ 42,434</b>	<b>\$ 65,115</b>	<b>\$ (22,681)</b>	<b>-34.8%</b>

**SALT LAKE CITY DEPARTMENT OF AIRPORTS**

(An Enterprise fund of Salt Lake City Corporation)

**OPERATING REVENUES AND EXPENDITURES TO PRIOR YEAR (Unaudited)**

(Amounts in Thousands)

	Jul 2020 - Mar 2021	Jul 2019 - Mar 2020	DOLLAR CHANGE	PERCENT CHANGE
<b>Revenues</b>				
Landing Fees	\$ 36,681	\$ 31,261	\$ 5,420	17.3%
Fuel Farm	697	404	293	72.4%
Aircraft Remain Overnight Fees	367	158	209	132.8%
Cargo Bldg. & Ramp Use Fee	1,175	1,255	(80)	-6.4%
Security Charges to TSA	437	593	(156)	-26.3%
Extraordinary Service Charges	89	50	39	78.1%
Passenger Boarding Bridges	1,098	1,445	(347)	-24.1%
Tenant Telephone Fees	101	211	(110)	-52.4%
Terminal Rents	42,984	30,278	12,706	42.0%
General Aviation Hangars	896	963	(67)	-6.9%
FBO Hangars/Fuel Oil Royalty	442	383	59	15.3%
Flight Kitchens	765	1,373	(608)	-44.3%
Other Buildings & Office Space	3,883	4,129	(246)	-6.0%
Food Service & Vending	4,039	9,476	(5,437)	-57.4%
News/Gift Shops	1,892	5,081	(3,189)	-62.8%
Car Rental	15,712	22,785	(7,073)	-31.0%
Leased Site Areas	2,711	2,113	598	28.3%
Auto Parking/Ground Transportation	15,726	30,834	(15,108)	-49.0%
Advertising	316	841	(525)	-62.4%
State Aviation Fuel Tax	1,383	2,121	(738)	-34.8%
Military	118	115	3	2.7%
Glycol Recycling Sales	181	277	(96)	-34.5%
Auxiliary Airport Fuel Sales	845	955	(110)	-11.6%
Other	2,613	1,819	794	43.7%
Less: Airline Revenue Sharing	(4,304)	(10,973)	6,669	-60.8%
<b>Operating Revenues</b>	<b>130,847</b>	<b>137,947</b>	<b>(7,100)</b>	<b>-5.1%</b>
<b>Expenses</b>				
Salary & Wages	\$ 26,455	\$ 25,804	\$ 651	2.5%
Employee Benefits	11,704	11,334	370	3.3%
Maintenance Supplies	3,669	6,407	(2,738)	-42.7%
Automotive Supplies	1,872	2,100	(228)	-10.9%
Other Supplies	981	1,027	(46)	-4.5%
Insurance Premiums	2,520	1,479	1,041	70.3%
Janitorial Service	6,965	6,754	211	3.1%
Maintenance Contracts	1,043	1,552	(509)	-32.8%
Other Contractual Services	7,454	5,735	1,719	30.0%
Professional & Tech Service	9,691	2,040	7,651	375.0%
Utilities	4,440	5,245	(805)	-15.4%
Administrative Service Fee	1,667	1,150	517	45.0%
Aircraft Rescue Fire Fighting	3,946	3,831	115	3.0%
Police Services	6,225	6,225	0	0.0%
Other Expenses	662	1,150	(488)	-42.4%
Operating Expenses Before Capitalized Salaries	89,294	81,833	7,461	9.1%
Capitalized Salaries	881	922	(41)	-4.4%
<b>Total Operating Expenses</b>	<b>88,413</b>	<b>80,911</b>	<b>7,502</b>	<b>9.3%</b>
<b>Operating Income</b>	<b>\$ 42,434</b>	<b>\$ 57,036</b>	<b>\$ (14,602)</b>	<b>-25.6%</b>



**SALT LAKE CITY INTERNATIONAL AIRPORT  
AIR TRAFFIC STATISTICS AND ACTIVITY REPORT  
THREE MONTHS ENDED MARCH 2021**

	March 2021	CHANGE	YTD 2021	CHANGE	12 MO ROLLING Ending 03/2021	CHANGE
<b>PASSENGERS</b>						
<i>DOMESTIC</i>						
Enplaned - Local	535,889	29.01%	1,284,634	-30.38%	3,453,630	-56.92%
Enplaned - Connections	217,060	9.91%	530,415	-39.97%	1,918,035	-61.17%
Less International	-18,877		-51,464		-109,212	
Enplaned	734,072	24.03%	1,763,585	-32.86%	5,262,453	-57.62%
Deplaned - Local	512,399	23.56%	1,269,647	-30.94%	3,433,447	-57.43%
Deplaned - Connection	217,060	9.91%	530,415	-39.97%	1,918,035	-61.17%
Less International	-19,263		-55,189		-110,328	
Deplaned	710,196	22.70%	1,744,873	-33.04%	5,241,154	-57.86%
<b>TOTAL DOMESTIC</b>	<b>1,444,268</b>	<b>23.37%</b>	<b>3,508,458</b>	<b>-32.95%</b>	<b>10,503,607</b>	<b>-57.74%</b>
<i>INTERNATIONAL</i>						
Enplaned	18,877	-10.30%	51,464	-49.66%	109,212	-79.75%
Deplaned	19,263	-42.27%	55,189	-52.54%	110,328	-80.57%
<b>TOTAL INTERNATIONAL</b>	<b>38,140</b>	<b>-29.91%</b>	<b>106,653</b>	<b>-51.19%</b>	<b>219,540</b>	<b>-80.17%</b>
<b>TOTAL PASSENGERS</b>	<b>1,482,408</b>	<b>21.01%</b>	<b>3,615,111</b>	<b>-33.68%</b>	<b>10,723,147</b>	<b>-58.70%</b>
<b>LANDED WEIGHT</b>						
Air Carriers	1,162,661,125	4.66%	3,117,134,246	-12.23%	10,212,853,532	-29.92%
Cargo Carriers	114,506,545	13.19%	315,955,737	6.09%	1,354,275,801	11.65%
<b>TOTAL LANDED WEIGHT (LBS)</b>	<b>1,277,167,670</b>	<b>5.37%</b>	<b>3,433,089,983</b>	<b>-10.81%</b>	<b>11,567,129,333</b>	<b>-26.73%</b>
<b>MAIL</b>						
Enplaned	2,995,046	12.82%	8,566,451	8.70%	34,231,677	23.76%
Deplaned	1,543,981	14.47%	4,894,291	16.82%	20,955,425	38.10%
<b>TOTAL MAIL (LBS)</b>	<b>4,539,027</b>	<b>13.38%</b>	<b>13,460,742</b>	<b>11.52%</b>	<b>55,187,102</b>	<b>28.84%</b>
<b>CARGO</b>						
Enplaned	18,187,265	13.70%	49,515,847	4.59%	212,923,355	9.18%
Deplaned	17,110,508	-2.48%	46,560,135	-3.94%	207,379,725	1.72%
<b>TOTAL CARGO (LBS)</b>	<b>35,297,773</b>	<b>5.24%</b>	<b>96,075,982</b>	<b>0.28%</b>	<b>420,303,080</b>	<b>5.37%</b>
<b>MAIL &amp; CARGO</b>						
Enplaned	9,094	13.70%	24,758	4.59%	106,462	9.18%
Deplaned	8,555	-2.48%	23,280	-3.94%	103,690	1.72%
<b>TOTAL MAIL &amp; CARGO (TONS)</b>	<b>17,649</b>	<b>5.24%</b>	<b>48,038</b>	<b>0.28%</b>	<b>210,152</b>	<b>5.37%</b>
<b>AIRCRAFT OPERATIONS</b>						
Passenger Aircraft	19,974	4.25%	54,600	-11.12%	181,076	-29.04%
All-Cargo Aircraft	1,820	7.18%	4,952	-1.75%	20,618	0.92%
General Aviation	6,817	35.23%	18,168	8.49%	66,555	2.50%
Military	254	54.88%	708	32.83%	3,159	-2.83%
<b>TOTAL AIRCRAFT OPERATIONS</b>	<b>28,865</b>	<b>10.75%</b>	<b>78,428</b>	<b>-6.35%</b>	<b>271,408</b>	<b>-21.05%</b>

**SALT LAKE CITY INTERNATIONAL AIRPORT  
PASSENGER TRAFFIC REPORT  
THREE MONTHS ENDED MARCH 2021**

	March 2020	March 2021	% CHANGE	YTD 2020	YTD 2021	% CHANGE	12 MO ROLLING Ending 03/2021	% CHANGE
<b>ENPLANED PASSENGERS</b>								
AEROMEXICO	2,702	-	-100.0%	9,781	-	-100.0%	1,655	-96.5%
ALASKA	9,544	3,171	-66.8%	42,356	7,158	-83.1%	13,011	-92.4%
Horizon Air / Alaska	809	6,848	746.5%	1,956	14,328	632.5%	24,238	149.4%
Skywest / Alaska	6,445	10,907	69.2%	32,629	28,351	-13.1%	75,046	-48.9%
AMERICAN	36,193	45,875	26.8%	143,796	106,094	-26.2%	304,640	-47.6%
Compass	1,262	-	-100.0%	6,563	-	-100.0%	-	-100.0%
Envoy Air	-	-	0.0%	-	-	0.0%	733	100.0%
American/Mesa Air	-	135	100.0%	-	3,264	100.0%	4,185	-33.4%
Republic	-	-	0.0%	-	-	0.0%	816	100.0%
SkyWest (American)	4,973	12,358	148.5%	20,200	28,299	40.1%	70,126	-10.5%
DELTA	326,890	387,764	18.6%	1,468,650	935,553	-36.3%	2,849,534	-60.2%
SkyWest (Delta Connection)	98,874	119,880	21.2%	432,310	312,373	-27.7%	1,022,770	-48.9%
Compass (Delta Connection)	-	-	0.0%	-	-	0.0%	-	-100.0%
FRONTIER	11,673	19,611	68.0%	50,944	49,371	-3.1%	143,465	-39.9%
JETBLUE	16,122	17,487	8.5%	79,292	32,899	-58.5%	70,204	-80.9%
KLM ROYAL DUTCH AIRLINES	-	-	0.0%	-	-	0.0%	-	-100.0%
SOUTHWEST	60,536	88,777	46.7%	279,330	200,183	-28.3%	550,158	-55.7%
UNITED	19,586	12,946	-33.9%	89,818	35,671	-60.3%	79,718	-63.4%
GoJet Airlines	-	-	0.0%	-	-	0.0%	-	-100.0%
Express Jet	152	-	-100.0%	600	-	-100.0%	-	-100.0%
Mesa Airlines (United Express)	1,492	306	-79.5%	3,756	306	-91.9%	2,297	-90.0%
Republic Airways (United)	447	990	121.5%	1,953	1,584	-18.9%	2,173	-95.4%
SkyWest (United Express)	15,100	25,894	71.5%	64,732	59,535	-8.0%	156,731	-46.7%
Trans States	-	-	0.0%	-	-	0.0%	-	0.0%
Charters	82	-	-100.0%	170	80	-52.9%	165	-82.0%
West Coast Charters	-	0	0.0%	-	0	0.0%	0	0.0%
<b>TOTAL ENPLANED PASSENGERS</b>	<b>612,882</b>	<b>752,949</b>	<b>22.9%</b>	<b>2,728,836</b>	<b>1,815,049</b>	<b>-33.5%</b>	<b>5,371,665</b>	<b>-58.5%</b>
AeroMexico	2,904	-	-100.0%	9,801	-	-100.0%	1,592	-96.6%
ALASKA AIR	8,755	2,968	-66.1%	41,065	7,016	-82.9%	12,525	-92.4%
Horizon Air / Alaska	897	6,744	651.8%	1,977	14,110	613.7%	24,148	143.6%
Skywest / Alaska	6,592	9,840	49.3%	32,799	28,226	-13.9%	78,136	-47.4%
AMERICAN	33,357	44,173	32.4%	140,212	103,299	-26.3%	298,080	-50.2%
Compass	1,301	-	-100.0%	6,494	-	-100.0%	-	-100.0%
Envoy Air (American)	-	-	0.0%	-	-	0.0%	722	100.0%
Mesa Air	-	152	100.0%	-	3,440	100.0%	4,437	-17.8%
Republic	-	-	0.0%	-	-	0.0%	766	100.0%
SkyWest (American)	5,081	11,718	130.6%	20,896	27,918	33.6%	69,924	-15.1%
DELTA	335,863	378,403	12.7%	1,473,922	931,654	-36.8%	2,847,240	-60.4%
SkyWest (Delta Connection)	99,145	117,917	18.9%	431,286	308,437	-28.5%	1,015,367	-49.4%
Compass (Delta Connection)	-	-	0.0%	-	-	0.0%	-	-100.0%
FRONTIER	11,863	19,899	67.7%	51,692	49,874	-3.5%	145,080	-39.5%
JETBLUE	16,727	16,292	-2.6%	81,089	33,190	-59.1%	71,075	-80.7%
KLM ROYAL DUTCH AIRLINES	-	-	0.0%	-	-	0.0%	-	-100.0%
SOUTHWEST	55,431	82,293	48.5%	271,382	193,506	-28.7%	541,506	-55.9%
UNITED	17,244	12,858	-25.4%	89,674	36,018	-59.8%	77,511	-64.1%
GoJet Airlines	-	-	0.0%	-	-	0.0%	-	-100.0%
Express Jet	81	-	-100.0%	582	-	-100.0%	-	-100.0%
Mesa Airlines / United Express	1,337	350	-73.8%	3,537	350	-90.1%	2,523	-88.6%
Republic Airways (United)	441	982	122.7%	2,037	1,639	-19.5%	2,404	-95.1%
SkyWest (United Express)	15,155	24,870	64.1%	63,521	61,225	-3.6%	158,283	-45.5%
Trans States	-	-	0.0%	-	-	0.0%	-	0.0%
Charters	1	-	-100.0%	188	160	-14.9%	163	-83.9%
West Coast Charters	-	-	0.0%	-	-	0.0%	-	0.0%
<b>TOTAL DEPLANED PASSENGERS</b>	<b>612,175</b>	<b>729,459</b>	<b>19.2%</b>	<b>2,722,154</b>	<b>1,800,062</b>	<b>-33.9%</b>	<b>5,351,482</b>	<b>-58.8%</b>
<b>TOTAL PASSENGERS*</b>	<b>1,225,057</b>	<b>1,482,408</b>	<b>21.0%</b>	<b>5,450,990</b>	<b>3,615,111</b>	<b>-33.7%</b>	<b>10,723,147</b>	<b>-58.7%</b>
<b>INTERNATIONAL - ENPLANED</b>								
AEROMEXICO	2,702	-	-100.0%	9,781	-	-100.0%	1,655	-96.5%
DELTA	17,228	18,877	9.6%	86,635	51,464	-40.6%	107,557	-74.0%
SkyWest (Delta Connection)	1,033	-	-100.0%	5,736	-	-100.0%	-	-100.0%
Compass	-	-	0.0%	-	-	0.0%	-	-100.0%
KLM ROYAL DUTCH AIRLINES	-	-	0.0%	-	-	0.0%	-	-100.0%
Charters	-	-	0.0%	-	-	0.0%	-	0.0%
<b>TOTAL ENPLANED INTERNATIONAL</b>	<b>20,963</b>	<b>18,877</b>	<b>-10.0%</b>	<b>102,152</b>	<b>51,464</b>	<b>-49.6%</b>	<b>109,212</b>	<b>-79.8%</b>
AEROMEXICO	2,904	-	-100.0%	9,801	-	-100.0%	1,592	-96.6%
DELTA	25,659	19,263	-24.9%	97,198	55,189	-43.2%	108,736	-74.1%
SkyWest (Delta Connection)	4,806	-	-100.0%	9,289	-	-100.0%	-	-100.0%
Compass	-	-	0.0%	-	-	0.0%	-	-100.0%
KLM ROYAL DUTCH AIRLINES	-	-	0.0%	-	-	0.0%	-	-100.0%
Charters	-	-	0.0%	-	-	0.0%	-	0.0%
<b>TOTAL DEPLANED INTERNATIONAL</b>	<b>33,369</b>	<b>19,263</b>	<b>-42.3%</b>	<b>116,288</b>	<b>55,189</b>	<b>-52.5%</b>	<b>110,328</b>	<b>-80.6%</b>
<b>TOTAL INTERNATIONAL PASSENGERS</b>	<b>54,332</b>	<b>38,140</b>	<b>-29.8%</b>	<b>218,440</b>	<b>106,653</b>	<b>-51.2%</b>	<b>219,540</b>	<b>-80.2%</b>

\*Includes International

**SALT LAKE CITY INTERNATIONAL AIRPORT**  
**THREE MONTHS ENDED MARCH 2021**  
Based on Total Enplanements

**MARKET SHARE**

	March 2020	MARKET SHARE	March 2021	MARKET SHARE	YTD 2020	MARKET SHARE	YTD 2021	MARKET SHARE	12 MO ROLLING Ending 03/2020	12 MO ROLLING Ending 03/2021	MARKET SHARE
AEROMEXICO	2,702	0.44%	-	0.00%	9,781	0.36%	-	0.00%	47,289	1,655	0.03%
ALASKA	16,798	2.74%	20,926	2.78%	76,941	2.82%	49,837	2.75%	328,060	112,295	2.09%
AMERICAN	42,428	6.92%	58,368	7.75%	170,559	6.25%	137,657	7.58%	690,982	380,500	7.08%
DELTA	425,764	69.47%	507,644	67.42%	1,900,960	69.66%	1,247,926	68.75%	9,419,313	3,872,304	72.09%
FRONTIER	11,673	1.90%	19,611	2.60%	50,944	1.87%	49,371	2.72%	238,848	143,465	2.67%
JETBLUE	16,122	2.63%	17,487	2.32%	79,292	2.91%	32,899	1.81%	367,479	70,204	1.31%
KLM ROYAL DUTCH	-	0.00%	-	0.00%	-	0.00%	-	0.00%	20,052	-	0.00%
SOUTHWEST	60,536	9.88%	88,777	11.79%	279,330	10.24%	200,183	11.03%	1,240,894	550,158	10.24%
UNITED	36,777	6.00%	40,136	5.33%	160,859	5.89%	97,096	5.35%	603,020	240,919	4.48%
Charters	82	0.01%	-	0.00%	170	0.01%	80	0.00%	915	165	0.00%
<b>TOTAL ENPLANEMENTS</b>	<b>612,882</b>	<b>100%</b>	<b>752,949</b>	<b>100%</b>	<b>2,728,836</b>	<b>100%</b>	<b>1,815,049</b>	<b>100%</b>	<b>12,956,852</b>	<b>5,371,665</b>	<b>100%</b>

**PERCENT CHANGE YOY**

	March 2020	March 2021	PERCENT CHANGE	YTD 2020	YTD 2021	PERCENT CHANGE	12 MO ROLLING Ending 03/2020	12 MO ROLLING Ending 03/2021	PERCENT CHANGE
AEROMEXICO	2,702	-	100.00%	9,781	-	100.00%	47,289	1,655	-96.50%
ALASKA	16,798	20,926	24.57%	76,941	49,837	-35.23%	328,060	112,295	-65.77%
AMERICAN	42,428	58,368	37.57%	170,559	137,657	-19.29%	690,982	380,500	-44.93%
DELTA	425,764	507,644	19.23%	1,900,960	1,247,926	-34.35%	9,419,313	3,872,304	-58.89%
FRONTIER	11,673	19,611	68.00%	50,944	49,371	-3.09%	238,848	143,465	-39.93%
JETBLUE	16,122	17,487	8.47%	79,292	32,899	-58.51%	367,479	70,204	-80.90%
KLM ROYAL DUTCH	-	-	0.00%	-	-	0.00%	20,052	-	-100.00%
SOUTHWEST	60,536	88,777	46.65%	279,330	200,183	-28.33%	1,240,894	550,158	-55.66%
UNITED	36,777	40,136	9.13%	160,859	97,096	-39.64%	603,020	240,919	-60.05%
Charters	82	-	-100.00%	170	80	-52.94%	915	165	-81.97%
<b>TOTAL ENPLANEMENTS</b>	<b>612,882</b>	<b>752,949</b>	<b>22.9%</b>	<b>2,728,836</b>	<b>1,815,049</b>	<b>-33.5%</b>	<b>12,956,852</b>	<b>5,371,665</b>	<b>-58.5%</b>

**SALT LAKE CITY INTERNATIONAL AIRPORT  
LANDING ACTIVITY  
THREE MONTHS ENDED MARCH 2021**

	March 2020	March 2021	CHANGE	YTD 2020	YTD 2021	CHANGE	12 MO ROLLING Ending 03/2021	% CHANGE
<b>TOTAL NUMBER OF LANDINGS</b>								
<b>SCHEDULED CARRIERS</b>								
AEROMEXICO	31	-	-100.0%	91	-	-100.0%	18	-95.1%
ALASKA	116	31	-73.3%	386	83	-78.5%	161	-87.7%
Horizon Air / Alaska	27	127	370.4%	43	285	562.8%	498	217.2%
Skywest / Alaska	188	190	1.1%	596	624	4.7%	1,889	-18.9%
AMERICAN	351	292	-16.8%	1,097	715	-34.8%	2,329	-44.8%
Compass	25	-	-100.0%	102	-	-100.0%	-	-100.0%
American/Mesa Air	-	2	100.0%	-	46	100.0%	62	-27.1%
Envoy Air (American)	-	-	0.0%	1	-	-100.0%	13	550.0%
Republic/ (American)	-	-	0.0%	-	-	0.0%	12	100.0%
SkyWest (American)	138	215	55.8%	412	521	26.5%	1,378	-1.8%
DELTA	3,785	4,072	7.6%	12,060	10,863	-9.9%	37,132	-27.7%
SkyWest (Delta Connection)	3,027	3,202	5.8%	9,369	9,373	0.0%	32,703	-12.1%
Compass (Delta Connection)	-	-	0.0%	1	-	-100.0%	-	-100.0%
FRONTIER	106	123	16.0%	367	344	-6.3%	1,084	-27.8%
JETBLUE	196	142	-27.6%	679	292	-57.0%	842	-69.9%
KLM ROYAL DUTCH AIRLINES	-	-	0.0%	-	-	0.0%	-	-100.0%
SOUTHWEST	782	672	-14.1%	2,620	1,631	-37.7%	6,005	-43.0%
UNITED	202	111	-45.0%	794	332	-58.2%	721	-59.6%
GoJet	-	-	0.0%	-	-	0.0%	-	-100.0%
Express Jet	2	-	-100.0%	10	-	-100.0%	-	-100.0%
Mesa / United Express	31	5	-83.9%	63	5	-92.1%	42	-87.2%
Republic Airways Holdings	8	15	87.5%	32	25	-21.9%	37	-95.0%
SkyWest (United Express)	388	446	14.9%	1,187	1,119	-5.7%	3,157	-33.4%
Trans States	-	-	0.0%	-	-	0.0%	-	0.0%
<b>SUBTOTAL SCHEDULED CARRIERS:</b>	<b>9,403</b>	<b>9,645</b>	<b>2.6%</b>	<b>29,910</b>	<b>26,258</b>	<b>-12.2%</b>	<b>88,083</b>	<b>-29.8%</b>
<b>CHARTER CARRIERS</b>								
ALLEGIAN AIR	-	-	0.0%	-	-	0.0%	-	-100.0%
BOMBARDIER BUSINESS JETS	39	100	156.4%	200	279	39.5%	591	33.1%
BOUTIQUE AIR	-	-	0.0%	-	-	0.0%	-	0.0%
DELTA PRIVATE JETS	-	-	0.0%	-	-	0.0%	-	0.0%
EXECUTIVE JET MANAGEMENT	-	-	0.0%	-	-	0.0%	-	0.0%
FLIGHT OPTIONS	-	-	0.0%	-	-	0.0%	-	0.0%
KALITTA CHARTERS	6	-	-100.0%	15	36	140.0%	87	35.9%
KEYLIME AIR	-	-	0.0%	-	2	100.0%	2	-83.3%
NETJETS	119	242	103.4%	537	713	32.8%	1,661	13.1%
SUNSET AVIATION	-	-	0.0%	-	-	0.0%	-	0.0%
SWIFT AIR	-	-	0.0%	-	-	0.0%	-	0.0%
VIRGIN AMERICA	-	-	0.0%	-	-	0.0%	-	0.0%
XOJET	17	-	-100.0%	62	48	-22.6%	199	22.1%
OTHER CHARTER	1	-	-100.0%	5	-	-100.0%	2	-60.0%
<b>SUBTOTAL CHARTER CARRIERS:</b>	<b>182</b>	<b>342</b>	<b>87.9%</b>	<b>819</b>	<b>1,078</b>	<b>31.6%</b>	<b>2,542</b>	<b>17.7%</b>
<b>CARGO CARRIERS</b>								
ABX AIR	-	-	0.0%	-	-	-	-	0.0%
AERO CHARTER & TRANSPORT	-	-	0.0%	-	-	0.0%	-	0.0%
AIR TRANSPORT INTERNATIONAL	-	-	0.0%	-	-	0.0%	-	0.0%
ALPINE AVIATION	179	205	14.5%	526	460	-12.5%	1,990	-8.9%
AMERIFLIGHT	133	110	-17.3%	413	316	-23.5%	1,391	-24.1%
CORPORATE AIR (BILLINGS)	124	145	16.9%	376	412	9.6%	1,464	-5.0%
EMPIRE	16	19	18.8%	50	47	-6.0%	187	0.0%
FEDERAL EXPRESS	136	175	28.7%	411	478	16.3%	1,985	16.1%
GEM AIR	51	61	19.6%	163	180	10.4%	731	8.6%
SOUTHERN AIR	19	-	-100.0%	60	-	-100.0%	77	-71.7%
UPS	154	168	9.1%	437	476	8.9%	2,087	28.0%
WESTERN AIR EXPRESS	28	26	-7.1%	60	69	15.0%	296	184.6%
OTHER CARGO	4	1	-75.0%	10	2	-80.0%	14	-33.3%
<b>SUBTOTAL CARGO CARRIERS:</b>	<b>844</b>	<b>910</b>	<b>7.8%</b>	<b>2,506</b>	<b>2,440</b>	<b>-2.6%</b>	<b>10,222</b>	<b>0.6%</b>
<b>TOTAL LANDINGS</b>	<b>10,429</b>	<b>10,897</b>	<b>4.5%</b>	<b>33,235</b>	<b>29,776</b>	<b>-10.4%</b>	<b>100,847</b>	<b>-26.8%</b>
<b>TOTAL LANDED WEIGHT</b>								
<b>SCHEDULED CARRIERS</b>								
AEROMEXICO	2,945,000	-	-100.0%	8,645,000	-	-100.0%	1,710,000	-95.1%
ALASKA	17,833,064	4,845,006	-72.8%	58,884,292	12,896,706	-78.1%	24,402,538	-87.6%
Horizon Air / Alaska	2,023,839	9,519,539	370.4%	3,223,151	21,362,745	562.8%	37,328,586	217.2%
Skywest / Alaska	14,091,916	14,241,830	1.1%	44,674,372	46,773,168	4.7%	141,593,773	-18.9%
AMERICAN	52,771,572	48,171,058	-8.7%	163,191,834	119,611,626	-26.7%	360,786,094	-41.9%
Compass	1,873,750	-	-100.0%	7,644,900	-	-100.0%	-	-100.0%
Envoy Air (American)	-	-	0.0%	74,950	-	-100.0%	974,350	550.0%
American/Mesa Air	-	148,600	100.0%	-	3,401,800	100.0%	4,595,400	-27.1%
Republic (American)	-	-	0.0%	-	-	0.0%	899,400	100.0%
SkyWest (American)	9,246,000	14,528,500	57.1%	27,604,000	35,030,500	26.9%	92,449,500	-1.7%
DELTA	607,191,591	669,818,087	10.3%	1,920,650,362	1,786,125,461	-7.0%	5,850,775,447	-26.5%
SkyWest (Delta Connection)	194,212,458	212,585,945	9.5%	600,067,498	623,836,864	4.0%	2,222,913,873	-6.5%
Compass (Delta Connection)	-	-	0.0%	75,177	-	-100.0%	-	-100.0%
FRONTIER	14,934,064	17,812,874	19.3%	51,684,996	49,678,432	-3.9%	155,286,112	-30.1%
JETBLUE	27,871,200	20,192,400	-27.6%	96,553,800	41,522,400	-57.0%	119,732,400	-69.9%

**SALT LAKE CITY INTERNATIONAL AIRPORT  
LANDING ACTIVITY  
THREE MONTHS ENDED MARCH 2021**

	March 2020	March 2021	CHANGE	YTD 2020	YTD 2021	CHANGE	12 MO ROLLING Ending 03/2021	% CHANGE
KLM ROYAL DUTCH AIRLINES	-	-	0.0%	-	-	0.0%	-	-100.0%
SOUTHWEST	101,728,000	90,768,000	-10.8%	340,080,000	215,536,000	-36.6%	796,224,000	-42.1%
UNITED	29,045,920	15,792,400	-45.6%	113,356,900	47,004,680	-58.5%	101,858,740	-59.7%
GoJet	-	-	0.0%	-	-	0.0%	-	-100.0%
Express Jet	150,000	-	-100.0%	750,000	-	-100.0%	-	-100.0%
Mesa / United Express	2,325,000	375,000	-83.9%	4,725,000	375,000	-92.1%	3,150,000	-87.2%
Republic Airways Holdings	583,786	1,084,500	85.8%	2,318,986	1,823,533	-21.4%	2,701,933	-95.0%
SkyWest (United Express)	26,396,863	32,101,789	21.6%	80,870,299	78,775,375	-2.6%	218,280,314	-33.4%
Trans States	-	-	0.0%	-	-	0.0%	-	0.0%
<b>SUBTOTAL SCHEDULED CARRIERS:</b>	<b>1,105,224,023</b>	<b>1,151,985,528</b>	<b>4.2%</b>	<b>3,525,075,517</b>	<b>3,083,754,290</b>	<b>-12.5%</b>	<b>10,135,662,460</b>	<b>-30.1%</b>
<b>CHARTER CARRIERS</b>								
ALLEGIAN AIR	-	-	0.0%	-	-	0.0%	-	-100.0%
BOMBARDIER	1,126,523	3,411,302	202.8%	6,655,809	9,564,142	43.7%	19,911,738	34.8%
BOUTIQUE AIR	-	-	0.0%	-	-	0.0%	-	0.0%
DELTA PRIVATE JETS	-	-	0.0%	-	-	0.0%	-	0.0%
EXECUTIVE JET MANAGEMENT	-	-	0.0%	-	-	0.0%	-	0.0%
FLIGHT OPTIONS	-	-	0.0%	-	-	0.0%	-	0.0%
KALITTA CHARTERS	91,800	-	-100.0%	242,220	564,100	132.9%	2,008,420	37.6%
KEYLIME AIR	-	-	0.0%	63,448	75,375	18.8%	75,375	-80.2%
MIAMI AIR	146,300	-	-100.0%	438,900	-	-100.0%	-	-100.0%
NETJETS	3,723,575	7,264,295	95.1%	16,685,670	21,793,539	30.6%	49,710,109	12.7%
SIERRA PACIFIC	-	-	0.0%	-	-	0.0%	220,000	100.0%
SUN COUNTRY	-	-	0.0%	-	-	0.0%	-	0.0%
SWIFT AIR	-	-	0.0%	-	-	0.0%	-	0.0%
VIRGIN AMERICA	-	-	0.0%	-	-	0.0%	-	0.0%
XOJET	692,350	-	-100.0%	2,528,250	1,946,900	-23.0%	7,273,850	22.9%
OTHER CHARTER	-	-	0.0%	-	-	0.0%	-	0.0%
<b>SUBTOTAL CHARTER CARRIERS:</b>	<b>5,780,548</b>	<b>10,675,597</b>	<b>84.7%</b>	<b>26,614,297</b>	<b>33,944,056</b>	<b>27.5%</b>	<b>79,199,492</b>	<b>16.6%</b>
<b>CARGO CARRIERS</b>								
ALPINE AVIATION	2,497,100	2,884,500	15.5%	7,361,000	6,298,400	-14.4%	27,894,600	-9.0%
AMERIFLIGHT	2,069,668	1,461,400	-29.4%	6,349,080	4,214,288	-33.6%	18,949,158	-29.7%
AMERISTAR	81,700	-	-100.0%	136,300	-	-100.0%	163,400	-0.1%
ATLAS AIR	816,000	272,000	-66.7%	1,958,000	544,000	-72.2%	3,567,000	-23.7%
CORPORATE AIR (BILLINGS)	1,054,000	1,232,500	16.9%	3,196,000	3,502,000	9.6%	12,444,000	-5.0%
EMPIRE	578,480	686,945	18.8%	1,807,750	2,004,849	10.9%	7,481,243	7.0%
FEDEX EXPRESS	48,244,800	57,317,300	18.8%	143,686,700	155,560,600	8.3%	651,134,000	9.2%
GEM AIR	433,500	518,500	19.6%	1,385,500	1,521,000	9.8%	6,122,000	7.4%
KALITTA AIR	-	-	0.0%	-	-	0.0%	-	0.0%
SOUTHERN AIR INC	2,299,000	-	-100.0%	7,317,980	-	-100.0%	9,317,000	-72.0%
UPS	42,648,220	49,790,400	16.7%	123,604,760	140,840,500	13.9%	611,332,780	24.1%
WESTERN AIR EXPRESS	364,000	343,000	-5.8%	780,000	906,000	16.2%	3,862,200	185.7%
OTHER CARGO	-	-	0.0%	-	-	0.0%	-	0.0%
<b>SUBTOTAL CARGO CARRIERS:</b>	<b>101,086,468</b>	<b>114,506,545</b>	<b>13.3%</b>	<b>297,583,070</b>	<b>315,391,637</b>	<b>6.0%</b>	<b>1,352,267,381</b>	<b>11.6%</b>
<b>TOTAL LANDED WEIGHT</b>	<b>1,212,091,039</b>	<b>1,277,167,670</b>	<b>5.4%</b>	<b>3,849,272,884</b>	<b>3,433,089,983</b>	<b>-10.8%</b>	<b>11,567,129,333</b>	<b>-26.7%</b>

**SALT LAKE CITY INTERNATIONAL AIRPORT  
CARGO ACTIVITY REPORT  
THREE MONTHS ENDED MARCH 2021**

	March 2020	March 2021	CHANGE	YTD 2020	YTD 2021	CHANGE	12 MO ROLLING Ending 03/2021	% CHANGE
<b>ENPLANED CARGO</b>								
<b>PASSENGER CARRIERS</b>								
ALASKA	29,598	3,982	-86.55%	69,658	16,465	-76.36%	60,059	-78.15%
Horizon Air / Alaska	208	1,691	712.98%	399	6,994	1652.88%	24,751	1325.75%
Skywest / Alaska	896	3,950	340.85%	2,658	12,903	385.44%	136,454	552.92%
AMERICAN	7,576	5,739	-24.25%	72,324	13,993	-80.65%	45,606	-86.73%
American Eagle/Republic	-	-	0.00%	-	-	0.00%	-	0.00%
Compass	-	-	0.00%	120	-	-100.00%	-	-100.00%
Envoy Air (American)	-	-	0.00%	-	-	0.00%	-	0.00%
Mesa	-	-	0.00%	-	9	100.00%	9	100.00%
SkyWest (American)	183	858	368.85%	1,925	4,485	132.99%	411,556	3748.12%
DELTA	598,572	601,110	0.42%	2,141,987	1,700,535	-20.61%	4,014,939	-43.37%
KLM ROYAL DUTCH	-	-	0.00%	-	-	0.00%	-	-100.00%
SOUTHWEST	290,113	247,953	-14.53%	854,468	504,052	-41.01%	1,937,670	-45.53%
UNITED	7,254	6,176	-14.86%	17,631	20,967	18.92%	67,633	-11.10%
Others	-	-	0.00%	-	720	100.00%	57,566	42.70%
<b>CARGO CARRIERS</b>								
FEDEX EXPRESS*	8,933,689	10,091,963	12.97%	26,056,215	27,533,269	5.67%	121,606,369	13.97%
GEM AIR	72,875	84,460	15.90%	207,540	220,441	6.22%	986,463	25.36%
SOUTHERN AIR	11,739	-	-100.00%	71,965	-	-100.00%	179,035	-68.31%
UPS	4,885,916	5,911,312	20.99%	14,892,263	16,343,261	9.74%	71,351,165	14.08%
MISC CARGO	1,157,869	1,228,071	6.06%	2,952,425	3,137,753	6.28%	12,044,080	0.29%
ABX AIR	-	-	0.00%	-	-	0.00%	-	0.00%
<b>TOTAL ENPLANED CARGO</b>	<b>15,996,488</b>	<b>18,187,265</b>	<b>13.70%</b>	<b>47,341,578</b>	<b>49,515,847</b>	<b>4.59%</b>	<b>212,923,355</b>	<b>9.18%</b>
<b>DEPLANED CARGO</b>								
<b>PASSENGER CARRIERS</b>								
ALASKA	7,304	-	-100.00%	37,765	5,401	-85.70%	31,873	-87.26%
Horizon Air / Alaska	1,238	8,263	567.45%	2,258	11,289	399.96%	35,326	336.77%
Skywest / Alaska	5,189	5,278	1.72%	15,214	17,742	16.62%	97,414	47.89%
AMERICAN	21,129	24,045	13.80%	57,323	63,093	10.07%	285,582	7.99%
American Eagle/Republic	-	-	0.00%	-	-	0.00%	-	0.00%
Compass	-	-	0.00%	187	-	-100.00%	-	-100.00%
Mesa (American)	-	156	100.00%	-	256	100.00%	256	100.00%
SkyWest (American)	240	878	265.83%	876	2,945	236.19%	15,124	237.89%
DELTA	743,927	805,177	8.23%	2,875,492	2,059,312	-28.38%	5,231,674	-46.92%
KLM ROYAL DUTCH	-	-	0.00%	-	-	0.00%	-	-100.00%
SOUTHWEST	360,814	372,052	3.11%	1,169,507	989,935	-15.35%	3,205,561	-33.59%
UNITED	3,204	27,958	772.60%	70,725	66,314	-6.24%	145,884	-56.98%
Others	6,697	-	-100.00%	18,289	11,580	-36.68%	236,111	111.32%
<b>CARGO CARRIERS</b>								
FEDEX EXPRESS*	8,210,471	8,900,938	8.41%	22,986,072	24,666,861	7.31%	105,225,120	8.67%
GEM AIR	20,219	27,826	37.62%	62,302	74,159	19.03%	272,987	3.67%
SOUTHERN AIR	198,813	-	-100.00%	426,157	-	-100.00%	1,262,531	-40.27%
UPS	7,353,287	6,448,890	-12.30%	19,375,862	17,335,604	-10.53%	86,240,028	4.42%
MISC CARGO	612,707	489,047	-20.18%	1,371,146	1,255,644	-8.42%	5,094,254	-0.31%
ABX AIR	-	-	0.00%	-	-	0.00%	-	0.00%
<b>TOTAL DEPLANED CARGO</b>	<b>17,545,239</b>	<b>17,110,508</b>	<b>-2.48%</b>	<b>48,469,175</b>	<b>46,560,135</b>	<b>-3.94%</b>	<b>207,379,725</b>	<b>1.72%</b>
<b>TOTAL CARGO</b>	<b>33,541,727</b>	<b>35,297,773</b>	<b>5.24%</b>	<b>95,810,753</b>	<b>96,075,982</b>	<b>0.28%</b>	<b>420,303,080</b>	<b>5.37%</b>

\*FEDEX EXPRESS includes mail





Salt Lake City  
Department of Airports

**COMPARISON OF ON TIME OPERATIONS**  
February 2021

**ARRIVALS**

Airport	Flights	% On Time	Rank
HNL HONOLULU	2,361	92.3	1
ATL HARTSFIELD-JACKSON ATLANTA INTL	20,284	87.7	2
MSP MINNEAPOLIS-ST. PAUL INTL	7,398	87.4	3
DTW DETROIT METRO WAYNE CNTY	8,168	86.5	4
SFO SAN FRANCISCO INTL	5,333	86.4	5
PHX PHOENIX SKY HARBOR INTL	9,449	85.9	6
LAX LOS ANGELES INTL	9,044	85.7	7
SAN SAN DIEGO LINDBERGH FIELD	3,172	85.3	8
<b>SLC SALT LAKE CITY INTL</b>	<b>7,658</b>	<b>85.3</b>	9
LAS LAS VEGAS MCCARRAN INTL	7,279	84.8	10
CLT CHARLOTTE DOUGLAS	13,496	83.6	11
DCA RONALD REAGAN NATIONAL	2,792	83.3	12
MIA MIAMI INTL	4,970	82.3	13
LGA NEW YORK LAGUARDIA	3,014	82.0	14
MDW CHICAGO MIDWAY	3,398	81.3	15
PHL PHILADELPHIA INTL	5,407	80.7	16
BOS BOSTON LOGAN INTL	3,984	80.1	17
BWI BALTIMORE/WASHINGTON INTL	4,263	79.9	18
DEN DENVER INTL	15,717	79.3	19
JFK NEW YORK JFK INTL	3,282	78.9	20
IAD WASHINGTON DULLES	4,023	78.7	21
TPA TAMPA INTL	4,246	78.4	22
MCO ORLANDO INTL	7,626	78.0	23
EWB NEWARK LIBERTY INTERNATIONAL	4,886	77.5	24
ORD CHICAGO O HARE	13,321	77.5	25
PDX PORTLAND INTL	3,338	76.5	26
FLL FT. LAUDERDALE	5,583	76.4	27
SEA SEATTLE-TACOMA INTL	10,556	75.9	28
IAH HOUSTON GEORGE BUSH	9,152	71.6	29
DFW DALLAS-FT. WORTH REGIONAL	17,567	66.0	30
<b>AVERAGES</b>	<b>7,359</b>	<b>81.2</b>	

**DEPARTURES**

Airport	Flights	% On Time	Rank
HNL HONOLULU	2,360	93.3	1
SFO SAN FRANCISCO INTL	5,342	90.8	2
SAN SAN DIEGO LINDBERGH FIELD	3,170	90.4	3
LAX LOS ANGELES INTL	9,048	89.1	4
MSP MINNEAPOLIS-ST. PAUL INTL	7,400	89.0	5
ATL HARTSFIELD-JACKSON ATLANTA INTL	20,283	88.9	6
DTW DETROIT METRO WAYNE CNTY	8,107	88.8	7
CLT CHARLOTTE DOUGLAS	11,959	88.4	8
PHX PHOENIX SKY HARBOR INTL	9,452	88.2	9
LAS LAS VEGAS MCCARRAN INTL	7,274	88.1	10
<b>SLC SALT LAKE CITY INTL</b>	<b>7,657</b>	<b>87.4</b>	11
DCA RONALD REAGAN NATIONAL	2,489	86.5	12
PHL PHILADELPHIA INTL	4,187	86.3	13
BOS BOSTON LOGAN INTERNATIONAL	3,983	85.3	14
TPA TAMPA INTERNATIONAL	4,243	85.1	15
MIA MIAMI INTL	4,967	84.5	16
SEA SEATTLE-TACOMA INTL	10,557	83.3	17
MCO ORLANDO INTL	7,628	83.1	18
PDX PORTLAND INTERNATIONAL	3,339	82.6	19
FLL FT. LAUDERDALE	5,577	82.5	20
LGA NEW YORK LAGUARDIA	2,996	81.5	21
IAD WASHINGTON DULLES	2,638	81.0	22
ORD CHICAGO O HARE	11,016	80.3	23
JFK NEW YORK JFK INTL	3,285	80.1	24
DEN DENVER INTERNATIONAL	15,730	79.4	25
IAH HOUSTON GEORGE BUSH	7,373	77.2	26
EWB NEWARK LIBERTY INTERNATIONAL	4,366	76.9	27
BWI BALTIMORE/WASHINGTON INTL	4,262	74.3	28
MDW CHICAGO MIDWAY	3,398	73.5	29
DFW DALLAS-FT. WORTH REGIONAL	17,564	70.2	30
<b>AVERAGES</b>	<b>7,055</b>	<b>83.9</b>	

**ON TIME ARRIVAL PERFORMANCE AT SLC**

By Carrier

Air Carrier	Flights	% On Time
F9 FRONTIER	103	89.3%
DL DELTA	<b>5,987</b>	<b>87.7%</b>
AS ALASKA	322	84.5%
UA UNITED	444	77.9%
AA AMERICAN	365	75.9%
WN SOUTHWEST	441	71.9%
B6 JETBLUE	86	59.3%
<b>AVERAGES</b>	<b>8,404</b>	<b>92.3%</b>

Source: DOT Air Travel Consumer Report

# **DESIGN AND CONSTRUCTION REPORT**

## TABLE OF CONTENTS

- I. Area Map of Project Locations
- II. Project Schedule
- III. Construction Analysis
- IV. Design and Construction Report

SALT LAKE CITY DEPARTMENT OF AIRPORTS

May 13, 2021



Salt Lake City  
International Airport

## 2020 - 2021 Project Legend

### Airfield

1. Pump House No. 1 Reconstruction
2. Airfield Lighting Wiring Phase 5
3. PCC Pavement Joint Seal North Cargo Apron Phase 2
4. Roof Replacement for NS Bldg. #3 and #15
5. T/W G Centerline PCC Panel Replacement
6. PCC Pavement Joint Seal Program-Deicing Pad T/W L-L1

### Landside

7. Parking Lot E Pedestrian Canopy
8. QTA Deck Coating
9. Glycol Plant & Wildlife Services Office Bldg.
10. North Cargo Parking Lot Expansion
11. Electric Vehicle Charging Stations
12. Economy Parking Lot Bus Route Route Reconfiguration



SALT LAKE CITY INTERNATIONAL AIRPORT  
CONSTRUCTION PROGRAM  
2020/2021 Construction Schedule

ID	Task Name	Start	Finish	Nov '20	Dec '20	Jan '21	Feb '21	Mar '21	Apr '21	May '21	Jun '21	Jul '21
1	<b>Project Title</b>	<b>Wed 2/5/20</b>	<b>Wed 11/10/21</b>									
2	(1) Pump House No. 1 Reconstruction	Wed 2/5/20	Sat 11/14/20									
3	(2) Airfield Lighting Wiring Phase 5	Tue 4/27/21	Mon 9/20/21									
4	(3) PCC Pavement Joint Seal-N. Cargo Apron Phase 2	Mon 5/17/21	Fri 6/11/21									
5	(4) Roof Replacement for NS Bldg. #3 & #15	Tue 4/6/21	Wed 8/18/21									
6	(5) T/W G Centerline PCC Panel Replacement	Mon 5/24/21	Mon 11/1/21									
7	(6) PCC Pavement Joint Seal Deicing Pad T/W L-L1	Mon 6/7/21	Tue 7/6/21									
8	(7) Parking Lot E Pedestrian Canopy	Fri 6/12/20	Fri 1/29/21									
9	(8) Quick Turn Around (QTA) Deck Coating	Thu 10/1/20	Fri 12/4/20									
10	(9) Glycol Plant & Wildlife Services Office Bldg.	Thu 9/17/20	Thu 4/29/21									
11	(10) North Cargo Parking Lot Expansion	Mon 4/12/21	Thu 6/10/21									
12	(11) Electric Vehicle Charging Stations	Thu 5/13/21	Wed 11/10/21									
13	(12) Economy Parking Lot Bus Route Reconfiguraion	Mon 5/17/21	Tue 9/28/21									

Project: Microsoft Project (latest) Date: Thu 5/13/21	DESIGN		Inactive Milestone		Manual Summary	
	CONSTRUCTION		Inactive Summary		Start-only	
	SCOPING		Manual Task		Finish-only	
	SUMMARY		Duration-only		Deadline	
	Inactive Task		Manual Summary Rollup			

SALT LAKE CITY DEPARTMENT OF AIRPORTS  
CONSTRUCTION PROJECT STATUS 2020 - 2021

#	PROJECT NAME	ENGINEER'S ESTIMATE	BID AMOUNT	APPROVED CHANGE ORDERS TO DATE	% OF COST INCREASE TO DATE	STATUS	CONTRACTOR
<b>CONSTRUCTION</b>							
1	Pump House No. 1 Reconstruction	\$ 1,331,479	\$ 1,980,000	\$ 7,129	0.36%	complete	Pine Tree Construction
2	Airfield Lighting Wiring Phase 5	\$ 2,875,245	\$ 2,649,958			on schedule	Cache Valley Electric
4	Roof Replacement for NS Building #3 & #15	\$ 1,133,446	\$ 617,758			on schedule	Conwest
7	Parking Lot E Pedestrian Canopy	\$ 1,054,886	\$ 1,304,933	\$ 77,903	5.97%	on schedule	Crescent Construction
8	Quick Turn Around (QTA) Deck Coating	\$ 1,500,000	\$ 1,080,628	\$ 33,464	3.10%	behind schedule*	Paulsen Construction
9	Glycol Plant & Wildlife Services Office Bldg.	\$ 3,106,683	\$ 3,335,000	\$ 76,139	2.28%	on schedule	Cal Wadsworth Construction
10	North Cargo Parking Lot Expansion	\$ 326,689	\$ 337,795			on schedule	Staker & Parson Companies
11	Electric Vehicle Charging Stations	\$ 291,764	\$ 360,000			on schedule	Saunders Construction
	<b>Sub-total</b>	<b>\$ 11,620,192</b>	<b>\$ 11,666,072</b>	<b>\$ 194,635</b>	<b>1.67%</b>		
<b>BID/AWARD</b>							
3	PCC Pavement Joint Seal - N. Cargo Apron Ph. 2	\$ 380,733	\$ 454,187			awarding	Granite Construction
5	Taxiway G Centerline PCC Panel Replacement	\$ 2,235,325	\$ 2,347,930			awarding	Ames Construction
6	PCC Pavement Joint Seal Deicing Pad T/W L-L1	\$ 361,075	\$ 463,733			awarding	Granite Construction
12	Economy Parking Lot Bus Route Reconfiguration	\$ 1,824,590	\$ 1,775,112			awarding	Cal Wadsworth Construction
	<b>Sub-total</b>	<b>\$ 4,801,723</b>	<b>\$ 5,040,962</b>				
	<b>Total</b>	<b>\$ 16,421,915</b>	<b>\$ 16,707,034</b>	<b>\$ 194,635</b>	<b>1.16%</b>		
* Waiting for warmer weather conditions to perform structural repairs.							
Budget amount, Engineer's estimate, and Bid amount is based on construction cost only.							

## CONSTRUCTION REPORT

### CONSTRUCTION

- (1) **Pump House No. 1 Reconstruction** - The Contractor was issued substantial completion on May 5, 2021. Close-out documents for this project are being prepared.
- (2) **Airfield Lighting Wiring Phase 5** - A notice to proceed for this project was issued on April 27, 2021. The Contractor has started pulling airfield lighting cable in the main ductbank back to the west vault. This work will continue for several weeks.
- (4) **Roof Replacement for NS Building #3 & #15** - Submittals have been reviewed and approved by SLCDA. Construction for this project started on May 11, 2021. It is anticipated the project will be completed by July 20, 2021.
- (7) **Parking Lot E Pedestrian Canopy** - Final painting of the underside of the canopy will be completed by June 15, 2021.
- (8) **Quick Turn Around (QTA) Deck Coating** - The structural consultant has determined that the structural repair work is more extensive than previously determined. SLCDA Engineering has received pricing for the repairs. The structural beams have been shored to prevent any additional damage and the Contractor will continue repair work in spring of 2021 as weather conditions allow.
- (9) **Glycol Plant and Wildlife Services Office Building** - The Contractor is nearing 90% completion with work continuing on finishing the mechanical, plumbing and the electrical systems. Casework has been delivered to the site and installation will begin soon. The site grading and asphalt paving will begin at the end of this week. The existing backup generator will be removed this week and the construction and installation for the new backup generator will commence after that has been completed.
- (10) **North Cargo Parking Lot Expansion** - The Contractor has completed the excavation of the existing materials. Existing subbase material was left in-place and recompact for a cost saving to the project. Curb and gutter has been completed. Light pole foundation work is currently taking place. Asphalt paving is scheduled to begin on May 20, 2021.
- (11) **Electric Vehicle Charging Stations** - Bids for the project were opened on Thursday, April 29, 2021. The Contractor for this project is Saunders Construction. A pre-construction meeting was held on May 13, 2021 with a notice to proceed issued at that time.

### BID/AWARD

- (3) **PCC Pavement Joint Seal Program - North Cargo Apron Phase 2** - This project is part of an ongoing program to repair and reseal the joints in the portland cement concrete (PCC) pavement at various locations throughout the airfield. The bid opening for this project was held on February 25, 2021. The Contractor for this project is Granite Construction. Contract documents have been executed. Construction is anticipated to begin on May 17, 2021.
- (5) **Taxiway G Centerline PCC Panel Replacement** - This project is a continuing phase to maintain the Airport's infrastructure. The project will consist of replacing the centerline panels on Taxiway G between Taxiway S and the 16L deicing pad. Work will include demolition of existing concrete pavement and econcrete base, unclassified excavation, placement of engineered fill, placement of new econcrete base course and portland cement concrete paving. Also included is pavement marking and reinstalling in-pavement centerline lights complete with new underground cabling and connectors. The bid opening for this project was held on March 25, 2021. The Contractor for this project is Ames Construction. Contract documents have been executed. Construction is anticipated to begin on May 24, 2021.
- (6) **PCC Pavement Joint Seal Program - Deicing Pad Taxiway L-L1** - This project is part of an ongoing program to repair and reseal the joints in the portland cement concrete pavement at various locations. Work will include removal of the existing joint seal material, cleaning of the joints, repairs to spalled or damaged concrete panels along the joints as needed and resealing the concrete joints. The bid opening for this project was held on March 18, 2021. The Contractor for this project is Granite Construction. Contract documents have been executed. Construction is anticipated to begin on June 7, 2021.

- (12) **Economy Parking Lot Bus Route Reconfiguration** - The Terminal Redevelopment Program has led to a reduction in the size of the existing Economy Parking Lot. Due to these changes in the lot, the existing vehicle circulation and bus routes need to be changed to improve the operation of the lot. This project will centralize the bus routes, improve overall bus circulation, and improve customer service by reducing overall bus travel times within the Economy Parking Lot. Bids for this project were opened Thursday, April 1, 2021. The Contractor for this project is Cal Wadsworth Construction. Contract documents have been executed. Construction is anticipated to begin on May 17, 2021.



## Advisory Board Meeting

May 19, 2021

## Media Clippings

<https://slcairport.com/assets/pdfDocuments/AABoard/MayClippingPacket2021.pdf>

Compiled by the Communication & Marketing Dept.