



Advisory Board
Meeting

February 17, 2021

Agenda



Advisory Board Meeting

February 17, 2021

This meeting will be an electronic meeting pursuant to Title 52, Chapter 4, as amended June 25, 2020, without an anchor location, based on the attached written statement from Board Chair Steve Price.

To access the meeting please visit:

<https://saltlakecity.webex.com/saltlakecity/onstage/g.php?MTID=e6451f8ba8fac7e70bff5011af2c4c447>



I, Steve Price, Chair of the Salt Lake City Airport Advisory Board, hereby determine that conducting the Airport Advisory Board meeting at an anchor location presents a substantial risk to the health and safety of those who may be present at the anchor location. The World Health Organization, the President of the United States, the Governor of Utah, the Salt Lake County Health Department, Salt Lake County Mayor, and the Mayor of Salt Lake City have all recognized a global pandemic exists related to the new strain of the coronavirus, SARS- CoV-2.

Due to the state of emergency caused by the global pandemic, I find that conducting a meeting at an anchor location under the current state of public health emergency constitutes a substantial risk to the health and safety of those who may be present at the location.

Dated this 10 day of February, 2021.

A handwritten signature in blue ink, appearing to read "J. Steven Price", written over a horizontal line.

CM ~~Cynthia D. Miller~~ J. Steven Price
Chair, Salt Lake City Airport Advisory Board



ADVISORY BOARD MEETING AGENDA

17 February 2021

8:00 A.M.

CONSENT

- A. Minutes of the 20 January 2021 Meeting

DISCUSSION

- A. Director's Report – Bill Wyatt, Executive Director, SLCDCA
- B. Airport Redevelopment Program (ARP) Update – Mike Williams, ARP Director, SLCDCA
- C. Passenger Projection Scenarios – Nate Lavin, Air Service Development Manager, SLCDCA

INFORMATION ITEMS

Financial Report – December 2020
Air Traffic Statistics – December 2020
Construction Report – February 2021

MEDIA CLIPPINGS

Media Clippings – February 2021

The next meeting will be held on **Wednesday, March 17, 2021**, at 8:00 a.m. Meetings are usually held in the Board Room unless otherwise posted. People with disabilities may make requests for reasonable accommodations no later than 48 hours in advance in order to attend this Airport Advisory Board Meeting. Accommodations may include alternate formats, interpreters, and other auxiliary aids. This is an accessible facility. For questions or additional information, please contact Tina Nee at 801-575-2042.



Advisory Board
Meeting

February 17, 2021

Minutes

SALT LAKE CITY DEPARTMENT OF AIRPORTS MINUTES OF ADVISORY BOARD MEETING

January 20, 2021

Members Present: Cyndy Miller, Chair
Steve Price
Larry Pinnock
Theresa Foxley
Arlyn Bradshaw
Karen Mayne
Roger Boyer
Dirk Burton
Tye Hoffman
J.T. Martin

Mayor's Office: Rachel Otto

City Council Office: Russell Weeks

Department of Airports: Bill Wyatt, Executive Director
Tina Nee, Administration
Brian Butler, Chief Financial Officer
Kevin Robins, Director of Engineering
Treber Anderson, Acting Director of Operations
Ed Cherry, Director of IT
Ed Clayson, Director of Maintenance
Joel Nelson, Admin and Commercial Services
Medardo Gomez, ORAT Director
Brady Fredrickson, Director of Planning and Environmental
Pete Higgins, Chief Operations Officer
Mike Williams, ARP Program Director
Stefhan Bennett, SLC Police Captain
Rick Stratton, SLFD Battalion Chief
Nancy Volmer, Communication and Marketing Director
Catherine Brabson, City Attorney
Megan DePaulis, City Attorney

Nate Lavin, Communication and Marketing
Jasen Asay, Communication and Marketing

Other: Steve Domino, RS&H
Lee Davidson, Salt Lake Tribune
Robert Bergman, Lobbyist
Jared Esselman, UDOT
Andrew Scanlon, Kimley-Horn

Paul Coates, City of West Jordan
Kory Cox, HDR, Inc.
Jeremy Harris, KUTV
Andy C

Cyndy Miller called the meeting, held via Web-Ex to order at 8:04 a.m.

Cyndy Miller welcomed new member Tye Hoffman who represent Tooele County.

AGENDA

A. Minutes

A motion was made by Larry Pinnock and seconded by Arlyn Bradshaw to approve the minutes of November 28, 2020 as presented. All votes were affirmative; motion passed.

B. Director's Report

Bill Wyatt, Executive Director, updated the Airport Advisory Board regarding current events.

Bill Wyatt provided a brief update on passenger volumes, financial position, and construction.

Larry Pinnock asked about the cost of pursuing bonds, since there are record low rates.

Bill Wyatt indicated that the next purchase would occur in July and that it is too far out to speculate.

Arlyn Bradshaw reported he had seen media reports of complaints regarding the long walk to Concourse 'B'.

Bill Wyatt explained the airport is ADA compliant. The design was completed eight years. Moving walks are accessible. The Airline Consortium supplies wheelchairs for those needing assistance. With the large spike in passenger volume, the wheelchair provider was not prepared. The use of electric cart in the mid-concourse tunnel is being considered.

J.T. Martin described his experience and found the ticket agent not to be the most pleasant to deal with, the moving walks seemed to be going slower than normal, and signs in the tunnel offering encouragement of going the correct way should be placed.

C. Airport Redevelopment Program (ARP) Update – Mike Williams, ARP Director, SLCDA

Mike Williams, Airport Redevelopment Program (ARP) Director, presented an update on the ARP (presentation on file). Main points included were:

- Project statistics
- Safety and Schedule Stats, and Cost Summary

- Project statistics
- CGMP #5 – Terminal/South Concourse West/Gateway status
- CGMP #6 – Roadways/Parking Garage/Central Utility Plant status
- CGMP #7 – Baggage Handling System status
- CGMP #9A – SCW Apron Paving and Hydrant Fueling status
- CGMP #16 – NCP Phase 1
- CGMP #17 – NCP Baggage Handling System Phases 1 & 2 status
- CGMP #18 – NCP Apron Paving/ Hydrant Fueling
- Tracking Budget
- Job progress photos

Larry Pinnock inquired to the depth of the central tunnel once completed.

Mike Williams said about 60 feet.

Roger Boyer asked when construction of the central tunnel would be completed?

Mike Williams said the concrete box will be completed in 2022. The central node on the north needs to be added back into the program.

Bill Wyatt indicated this spring an announcement will be made regarding the central node.

Mayor Burton asked when the new TRAX platform would be open.

Mike Williams indicated July 2021.

J.T. Martin inquired about the breakroom trailers and restrooms.

Mike Williams indicated this is a temporary solution. Additional space will be provided in the Concourse 'A' expansion.

J.T. Martin inquired about the recycling of demolition debris.

Mike Williams indicated most stays on site. Rebar is recycled. The concrete is crushed and used as backfill.

Mayor Burton asked about the dewatering wells and how the water is recycled.

Mike Williams said the water goes through a filter then back into the ground water similar to any other run-off.

Cyndy Miller thanked Mike for saving the World Map.

J.T. Martin would like to see more information regarding the map in the Meet and Greet space.

D. Airport Revenue Short-Term Revolving Obligations – Brian Butler, Chief Financial Officer

Brian Butler, Chief Financial Officer, presented Airport Revenue Short-Term Revolving Obligations. Topics included:

- Financing schedule for the 2021 Revolving Line of Credit shows closing on March 1, 2021
- Key Terms of Agreement
- Two additional financings are planned to fund the ARP

Larry Pinnock asked with LIBOR going away as an index, will it be going to SOFR? Will spreads change?

Brian Butler indicated there is a lot of discussion around this issue, but that yes, SOFR will replace LIBOR. Any change in bond ratings could affect rates.

Tye Hoffman asked the likelihood of our bond rating changing?

Brian Butler explained there is one rating agency was very aggressive in downgrading airports last year. The feeling here is optimistic of where the airport is currently. Due to increases in passenger volumes, there could be an increase to the rating. Most likely closer to construction completion.

E. Motion to Approve Audited Financial

In the November 18, 2020, a motion was failed to be obtained to approve the presented audited financials. Cyndy Miller, Chair called for a motion.

Upon a motion by Theresa Foxley and seconded by Roger Boyer, the board approved the audited financials.

Cyndy Miller had a moment of personal privilege.

F. Elections of Board Chair and Vice-Chair

Cyndy Miller called for a motion for a vote by acclamation of the nomination of Steve Price as Airport Advisory Board Chair and for Theresa Foxley as Vice Chair. All votes were affirmative.

Steve Price had a moment of personal privilege.

Cyndy Miller adjourned the meeting at 9:32 a.m.

Cynthia Miller, Chair

Date

Erin Mendenhall, Mayor

Date



Advisory Board
Meeting

February 17, 2021

Discussion Items

AGENDA: DISCUSSION ITEM (A)
DATE: 17 February 2021
TO: Airport Advisory Board
FROM: Bill Wyatt, Executive Director
SUBJECT: **Executive Director's Report**

Bill Wyatt will present a monthly informational report to the Board, which may include:

1. ARP progress
2. Ground transportation update
3. Concessions and rental cars
4. Airport safety and security
5. Airport facilities and operations
6. General aviation
7. Passenger and airport users
8. Environmental matters
9. Financial condition
10. Legislative issues
11. Airlines
12. Communications and marketing

AGENDA: DISCUSSION ITEM (B)
DATE: 17 February 2021
TO: Airport Advisory Board
FROM: Bill Wyatt, Executive Director
SUBJECT: **Airport Redevelopment Program Update**

Mike Williams, Airport Redevelopment Program (ARP) Director, will present an update on the SLC Airport Redevelopment Program (presentation on file).



AIRPORT REDEVELOPMENT PROGRAM

Status Update 02/17/2021





Safety, Schedule Status and Cost Summary

Safety (Numbers for the Current Month)

- **OSHA National Average**
 - Lost Time Rate 1.80 Recordable Rate 3.10
- **TRP Metrics**
 - 8,528,140 Total Manhours worked
 - Lost Time Rate 0.25 Recordable Rate 2.29

Schedule – Construction Activity on Critical Path

- Mass Excavation of the Central Tunnel & Tie-Back Installation
- Existing Facility Demolition & Debris Removal
- Start of South Concourse East Foundation Rough Grading, Stone Column Installation & Pile Driving Activities
- Overall Program is on Schedule

Airport Redevelopment Program Budget Summary Status

- Total ARP Budget: \$ 4,100,509,714
- ARP Budget Commitment: \$ 3,579,280,754
- ARP Estimate At Completion: \$ 4,100,509,714
- ARP Invoiced to date: \$ 2,786,057,738

Project Statistics



TRP/NCP Trade Staffing
Trade Workers 303 on -2/04/2021 (104 Nights and 199 Days)
10,689,174 Hours Worked as of 1/31/2021

Contract Local/Non-Local Awarded Statistics

Local Trades	Dollar Value	Trade Count	Percentage
Total Local (Wasatch Front) Contractors	\$1,359,453,965	124	67%
Total Out of State Contractors	\$672,091,052	29	33%
Total Contract Awards	\$2,031,545,017	153	100%

Contract Union/Merit Shop Awarded Statistics

Union Trades	Dollar Value	Trade Count	Percentage
Total Union Contractors	\$698,423,765	36	34%
Total Merit Shop Contractors	\$1,333,121,252	117	66%
Total Contract Awards	\$2,031,545,017	153	100%

Post Opening Day Special Projects



Passenger Board Bridge Comfort

- Scope is to Temper the Air with both Heating and Cooling at all Gates
- Design is Complete
- Installation May through July dependent on Gate Availability

Passenger Board Bridge Motorized Baggage Conveyors

- Motorized Baggage Conveyors that Replace the Manual Slides and the 'Bag Buddies' (Elevators for Planeside Bags) at all Gates
- Fabrication is underway
- Installation May through June Dependent on Gate Availability

Wayfinding Signage

- Roadway Digital Signs Complete
- Rental Car Return and other Related Rental Car Signage Complete
- Terminal/Concourses – Key Decision Point Sign Backgrounds changed to Yellow
- Terminal Concourses – New and Modified Signs installed week of 2/08/2021

Concourse 'A' Trailers for Breakroom Space (due to Rephasing)

- Delivery – One delivers 2/16/2021 and the second delivers 2/24/2021
- Operational - 03/19/2021



Legacy Airport Demolition – CGMP# 12 - \$35.8M

Concourse D and IAB

- IAB Basement Backfill Complete

Parking Garage

- Site clean-up and prep for Concourse 'A' East Expansion underway

Ramp Control Towers

- Terminal 1 Ramp Control Tower Demolition Complete
- Terminal 2 Ramp Control Tower Demolition Complete 2/15/2021

Terminal 1 and Terminal 2

- Terminal 2 Demolition Complete 04/01/2021
- Terminal 1 Demolition Complete 05/18/2021

Concourse C, F, and G

- Concourse 'G' Demolition Complete 03/09/2021
- Concourse 'F' Demolition Complete 03/29/2021
- Concourse 'C' Demolition Complete 04/01/2021

Concourse 'A' East/ Central Tunnel – CGMP# 10 - \$393.3 mil



Central Tunnel Concrete Structure

- Excavation continues
- Mobilize for H-Pile Driving – 03/01/2021
- Energize Permanent Power for Dewatering Wells – 03/01/2021
- Start Subgrade Preparation – 03/05/2021

Concourse 'A' East

- Started Mechanical/Electrical/Plumbing Underground Rough-in
- Start Stone Columns – 03/02/2021
- Start Driven Piles – 03/11/2021

Apron and Taxiway Paving – CGMP# 11/11A - \$191.2 mil



Hydrant Fuel Systems

- Fuel Pipe along West Side of Central Tunnel underway
- Fuel Vault near Legacy IAB Complete
- Start Fuel Pipe and Pit Installation for Concourse 'A' East – 02/25/2021

Apron Paving

- Complete Existing Pavement Demo at Concourse 'G' – 02/12/2021
- Start MASS Excavation for new Pavement Profile – 02/16/2021
- Utility Work underway

Overall Airport Redevelopment Program Tracking Budget



Construction Budget January 2021	Budget 12/17/20 FOC	Committed Dec-20	Commitments Jan-21	Revised Commitments	Earned to Date	Estimate at Completion
Closed CGMPs 01, 03, 04, 09 & 15	\$217,279,720	\$217,279,720	\$0	\$217,279,720	\$217,279,720	\$217,279,720
CGMP 02 HDJV General Conditions Services	\$141,545,451	\$135,145,451	\$0	\$135,145,451	\$93,868,848	\$141,545,451
CGMP 05 Terminal/SCW/Gateway	\$1,037,311,402	\$1,037,311,402	\$0	\$1,037,311,402	\$1,024,654,297	\$1,037,311,402
CGMP 06 Parking Garage, Roadways, CUP	\$407,348,093	\$407,348,093	\$0	\$407,348,093	\$390,005,455	\$407,348,093
CGMP 07 TRP Baggage Handling System	\$108,094,181	\$108,094,181	\$0	\$108,094,181	\$94,734,614	\$108,094,181
CGMP 09A Apron Paving & Fueling/SCW	\$79,748,407	\$79,748,407	\$0	\$79,748,407	\$78,088,114	\$79,748,407
CGMP 10 South Concourse East/Tunnel Shell	\$398,207,572	\$397,310,540	\$0	\$397,310,540	\$33,230,199	\$398,207,572
CGMP 11 Apron Paving & Fueling SCE	\$233,223,072	\$191,182,465	\$0	\$191,182,465	\$13,560,817	\$233,223,072
CGMP 12 Existing Structure Demolition	\$35,772,132	\$35,760,124	\$0	\$35,760,124	\$18,182,734	\$35,772,132
CGMP 13 AOJV Preconstruction Services	\$16,235,519	\$16,235,518	\$0	\$16,235,518	\$14,045,642	\$16,235,519
CGMP 14 AOJV General Conditions Ph 1	\$93,384,788	\$47,006,676	\$0	\$47,006,676	\$43,714,846	\$93,384,788
CGMP 16 North Concourse & Mid-Tunnel Ph 1	\$300,786,053	\$300,786,053	\$0	\$300,786,053	\$292,421,298	\$300,786,053
CGMP 17 NCP Baggage Handling System	\$52,756,826	\$52,756,826	\$0	\$52,756,826	\$28,293,441	\$52,756,826
CGMP 18 NCP Apron Paving & Fueling Ph 1	\$91,949,310	\$91,949,310	\$0	\$91,949,310	\$81,086,606	\$91,949,310
CGMP 19 North Concourse & C-Tunnel Ph 2	\$262,438,048	\$28,647,982	\$0	\$28,647,982	\$1,433,782	\$262,438,048
CGMP 20 NCP Apron Paving & Jet Fuel Ph 2	\$44,856,288	\$0	\$0	\$0	\$0	\$44,856,288
Security Checkpoint Equipment	\$11,751,472	\$11,751,472	\$0	\$11,751,472	\$6,908,600	\$11,751,472
Reduntant Fuel Main	\$12,500,000	\$0	\$0	\$0	\$0	\$12,500,000
Taxilane X-X Construction	\$23,856,270	\$0	\$0	\$0	\$0	\$23,856,270
Total Program Construction	\$3,569,044,604	\$3,158,314,220	\$0	\$3,158,314,220	\$2,431,509,013	\$3,569,044,604
TRP Owner Procurement	\$5,215,472	\$5,215,472	\$0	\$5,215,472	\$4,808,421	\$5,215,472
NCP Owner Procurement	\$2,655,266	\$2,655,266	\$0	\$2,655,266	\$1,860,182	\$2,655,266
TRP Soft Cost	\$340,424,371	\$288,331,054	\$541,545	\$288,872,599	\$264,284,213	\$340,424,371
NCP Soft Cost	\$170,729,546	\$123,946,991	\$276,206	\$124,223,197	\$83,595,909	\$170,729,546
Total Program Soft Cost	\$519,024,655	\$420,148,783	\$817,751	\$420,966,534	\$354,548,725	\$519,024,655
TRP Owner Reserve	\$0					\$0
NCP Owner Reserve	\$12,440,455					\$12,440,455
Total Program Owner Reserve	\$12,440,455	\$0	\$0	\$0	\$0	\$12,440,455
Total ARP Program Budget	\$4,100,509,714	\$3,578,463,003	\$817,751	\$3,579,280,754	\$2,786,057,738	\$4,100,509,714



Terminal 1 Demolition





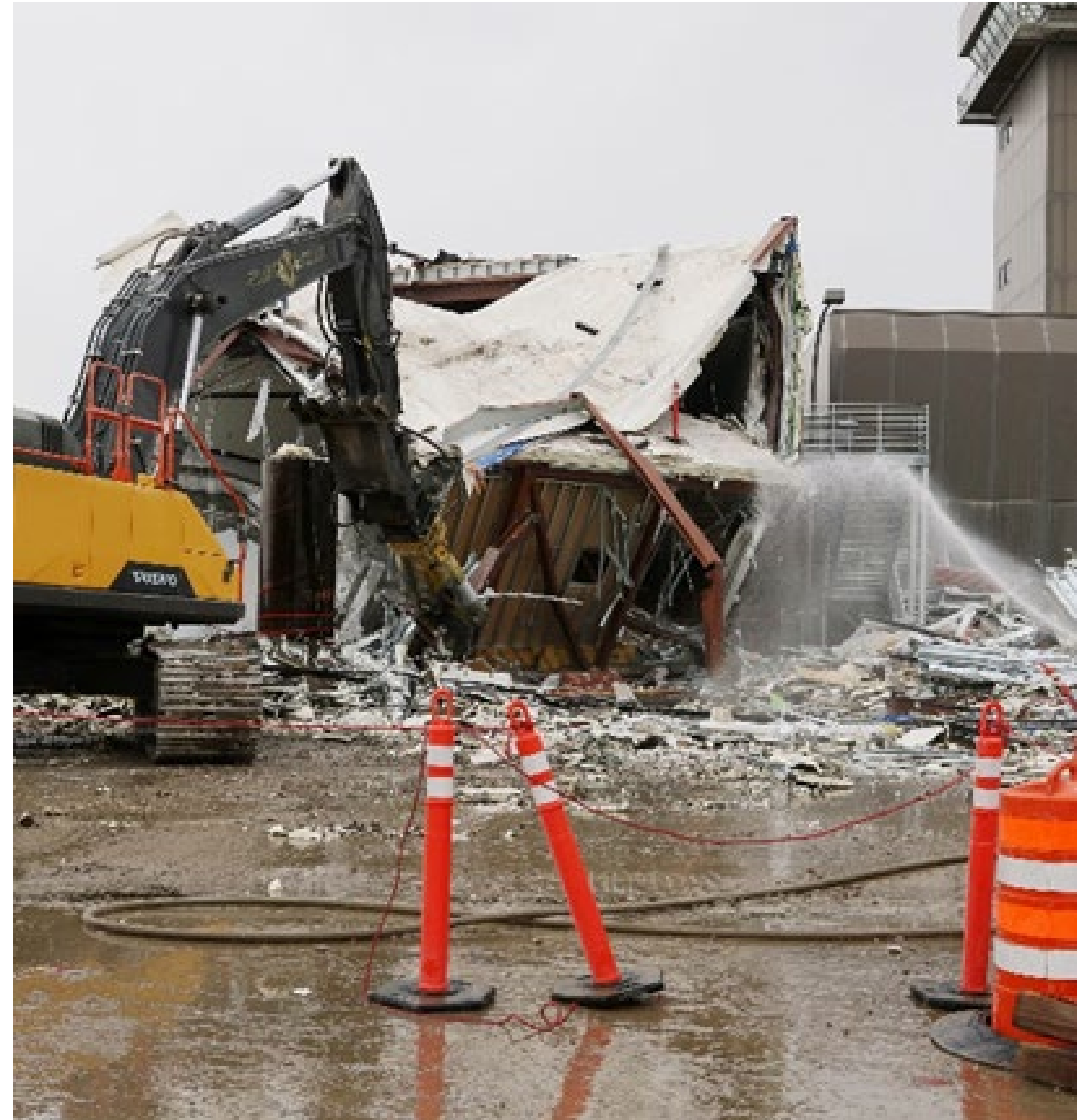
Parking Garage Demolition and Construction



Terminal 2 Demolition



IAB Bypass Connector Demolition





Concourse 'F' Pavement
Demolition



Concourse 'G' Demolition



Central Tunnel Tie-Back Installation



Central Tunnel Tie-back Installation



Central Tunnel Excavation Looking South - Mid-January



Central Tunnel Excavation Looking South - End of January



Demolition Rubble Loading at Terminal 1



Fuel Line Installation Adjacent to Central Tunnel



TRAX Station End-of-Line



TRAX Track Installation Looking Southeast



Questions?

AGENDA: DISCUSSION ITEM (C)
DATE: 17 February 2021
TO: Airport Advisory Board
FROM: Bill Wyatt, Executive Director
SUBJECT: **Passenger Projection Scenarios**

Nate Lavin, Airport Air Service Development Manager, will present an update on the Passenger Projection Scenarios (presentation on file).



PASSENGER PROJECTION SCENARIOS 2021

Revised February 2021



Introduction



SLC's passenger projections are supported by latest data available from airlines, flight schedule and airline performance sources, local and national departments of health and other reputable sources. These projections are only estimates and are subject to change.

Projections will be reviewed each month and adjusted as more data becomes available.

Future Schedules



The following airlines have released their revised March schedules, all with significant month-over-month increases.

Airline Name	MARCH		FEBRUARY		DIFFERENCE		DIFFERENCE %	
	Flights	Seats	Flights	Seats	Flights	Seats	Flights	Seats
Alaska Airlines	358	30,147	323	27,098	35	3,049	10.8%	11.3%
American Airlines	503	64,895	365	47,970	138	16,925	37.8%	35.3%
Delta Air Lines	7,247	889,780	6,086	726,802	1,161	162,978	19.1%	22.4%
Frontier Airlines	134	25,424	103	19,544	31	5,880	30.1%	30.1%
JetBlue Airways	141	24,406	86	14,496	55	9,910	64.0%	68.4%
Southwest Airlines	680	106,232	441	64,855	239	41,377	54.2%	63.8%
United Airlines	564	46,836	444	38,021	120	8,815	27.0%	23.2%
TOTAL	9,626	1,187,524	7,848	938,890	1,778	248,634	22.7%	26.5%

Assumptions



JAN - FEB 2021

- COVID-19 cases will remain high
- Passenger demand will remain suppressed
- SLC to continue to outpace national average
- Delta blocks middle seats through April 30
- Average load factor averaged at 52% based on previous months
- Phase I of vaccine distribution – health care workers, first responders, other essential workers

Assumptions



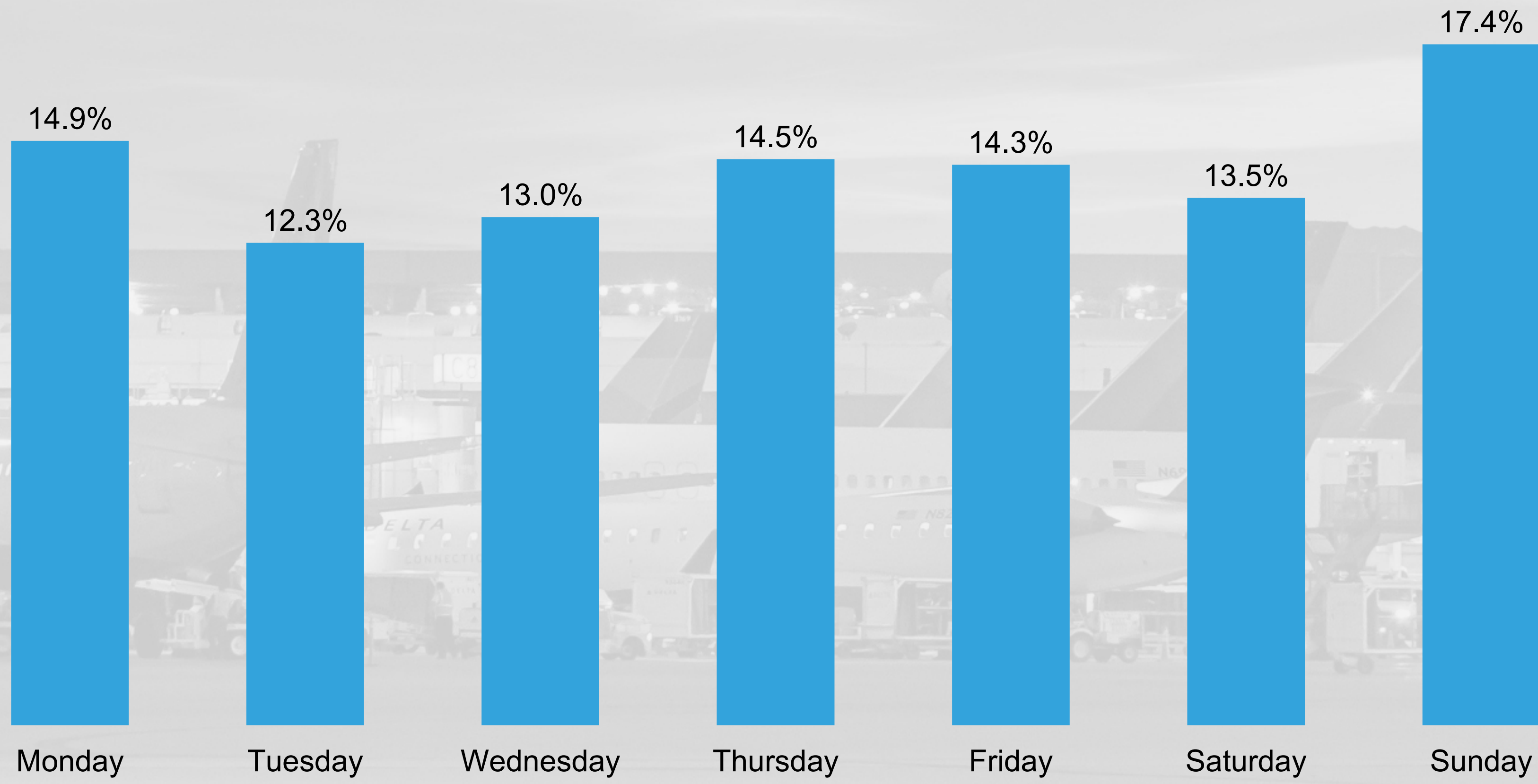
MAR – DEC 2021

- COVID-19 cases will decrease over time
- Passenger demand (pent up) will begin to increase in March and continue through the summer
- Majority of traffic leisure, with business and international traffic resuming slowly
- SLC to continue to outpace national average
- Delta unblocks middle seats beginning May 1
- Average load factor March – April at 52%
- Average load factor May – December between 75% - 85% depending on month
- Phase II of vaccine distribution – Other priority groups/age groups
- Phase III of vaccine distribution – Available to all Utah residents

Day-Of-Week Passenger Volume Fluctuations



SLC June 2020 - January 2021



Scenarios

HIGH-CASE

- Load factor Jan-Apr: 54%
- Load factor May: 77%
- Load factor Jun-Dec: 87%
- Seats added at greater rate: 2%

MID-CASE (Baseline)

- Load factor Jan-Apr: 52%
- Load factor May: 75%
- Load factor Jun-Dec: 85%
- Seats added align with trends

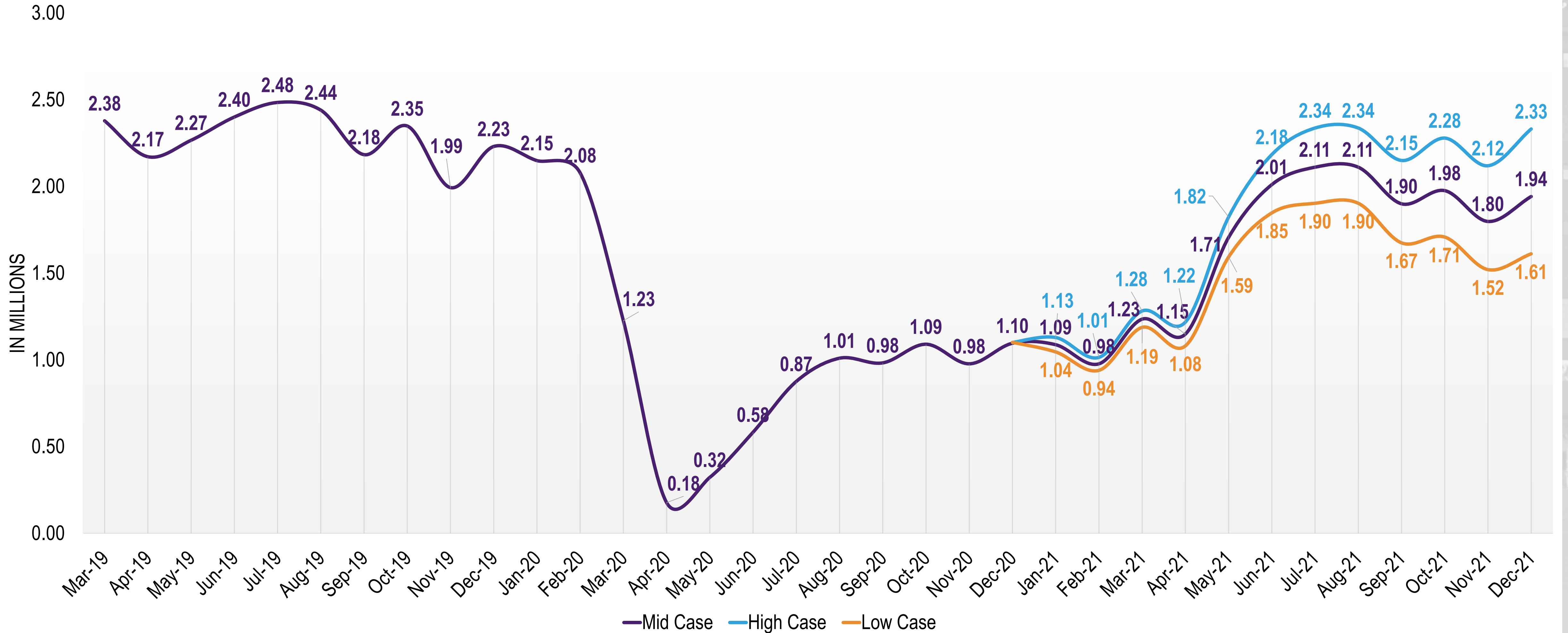
LOW-CASE

- Load factor Jan-Apr: 50%
- Load factor May: 73%
- Load factor Jun-Dec: 83%
- Seats added at lesser rate: -2%



Passenger Projection Scenarios Through 2021

SLC Passenger Projections Through 2021





Passenger Projection Scenarios Through 2021

	Monthly Passengers												
	Jan-21	Feb-21	Mar-21	Apr-21	May-21	Jun-21	Jul-21	Aug-21	Sep-21	Oct-21	Nov-21	Dec-21	TOTAL
HIGH-CASE	1,128,555	1,014,022	1,281,617	1,217,536	1,822,922	2,183,244	2,336,072	2,336,072	2,149,186	2,278,137	2,118,667	2,330,534	22,196,563
MID-CASE	1,086,757	976,465	1,234,149	1,147,759	1,705,084	2,009,726	2,110,212	2,110,212	1,899,191	1,975,158	1,797,394	1,941,186	19,993,293
LOW-CASE	1,044,959	938,909	1,186,682	1,079,881	1,592,392	1,846,738	1,902,141	1,902,141	1,673,884	1,707,361	1,519,552	1,610,725	18,005,363
	Change Compared to 2019 Levels												
	Jan-21	Feb-21	Mar-21	Apr-21	May-21	Jun-21	Jul-21	Aug-21	Sep-21	Oct-21	Nov-21	Dec-21	TOTAL
HIGH-CASE	56%	53%	54%	56%	80%	91%	94%	96%	98%	97%	106%	105%	82%
MID-CASE	54%	51%	52%	53%	75%	84%	85%	87%	87%	84%	90%	87%	74%
LOW-CASE	52%	49%	50%	50%	70%	77%	77%	78%	77%	73%	76%	72%	67%



Advisory Board
Meeting

February 17, 2021

Information

SALT LAKE CITY DEPARTMENT OF AIRPORTS
(An Enterprise Fund of Salt Lake City Corporation)
Statements of Net Position (Unaudited)
(Amounts in Thousands)

<i>As of December 31,</i>	2020	2019
ASSETS		
Current Assets		
Cash and cash equivalents	\$ 71,096	\$ 117,435
Restricted cash and cash equivalents	30,791	410,857
Restricted investments	21,021	412,427
Investments	-	15,382
Airline and rental fees receivable	22,771	17,118
Loans receivable	5,440	-
Other assets	(1,660)	4,395
Total current assets	149,459	977,614
Noncurrent Assets		
Restricted cash and cash equivalents	112,969	17,205
Restricted investments	61,040	53,220
Investments	921	31,089
Loans receivable	28,238	-
Other assets	877	1,573
Total noncurrent assets and investments	204,045	103,087
Capital assets		
Land	111,696	105,129
Building and improvements	1,419,993	1,415,726
Equipment	169,490	152,311
Construction in progress	2,669,135	1,981,227
Total capital assets - at cost	4,370,314	3,654,393
Less accumulated depreciation	1,109,403	1,066,533
Net capital assets	3,260,911	2,587,860
Total noncurrent assets	3,464,956	2,690,947
Total Assets	3,614,415	3,668,561
Deferred Outflows of Resources	4,521	7,002
Total Assets and Deferred Outflows of Resources	\$ 3,618,936	\$ 3,675,563

SALT LAKE CITY DEPARTMENT OF AIRPORTS
(An Enterprise Fund of Salt Lake City Corporation)
Statements of Net Position (Unaudited)
(Amounts in Thousands)

<i>As of December 31,</i>	2020	2019
LIABILITIES		
Current Liabilities		
Accounts payable	\$ 4,448	\$ 46,259
Accrued compensation	1,625	1,225
Interest payable	46,389	46,389
Other accrued liabilities	46,934	9,606
Total current liabilities	99,396	103,479
Noncurrent Liabilities		
Revenue bonds payable	2,036,540	2,043,972
Noncurrent compensation liability	3,801	3,556
Net pension liability	8,431	17,737
Other accrued liabilities	50,033	60,845
Total noncurrent liabilities	2,098,805	2,126,110
Total Liabilities	2,198,201	2,229,589
Deferred Inflows of Resources		
Deferred inflows - revenue collected in advance	5,897	4,735
Deferred inflows - pension	4,993	652
Total Deferred Inflows of Resources	10,890	5,387
NET POSITION		
Net investment in capital assets	1,393,893	1,272,728
Restricted for		
Capital projects	56,286	72,093
Debt service	176,227	265,310
Unrestricted	(216,561)	(169,544)
Net Position	1,409,845	1,440,587
Total Liabilities, Deferred Inflows of Resources, and Net Position	\$ 3,618,936	\$ 3,675,563

SALT LAKE CITY DEPARTMENT OF AIRPORTS

(An Enterprise fund of Salt Lake City Corporation)

Statements of Revenues, Expenses, and Changes in Fund Net Position (Unaudited)

(Amounts in Thousands)

<i>for the Six month period ended December,</i>	2020	2019
Operating Revenues		
Airline revenue	\$ 56,410	\$ 44,212
Terminal concessions	3,393	10,595
Landside concessions	17,204	36,776
Lease revenue	3,505	3,393
General aviation	1,465	1,538
State aviation tax	521	1,519
Other revenue	2,443	2,112
Operating revenues	84,941	100,145
Less airline revenue sharing	(2,870)	(7,315)
Total operating revenues	82,071	92,830
Operating Expenses		
Salaries and benefits	25,559	24,185
Materials and supplies	3,378	5,149
Maintenance contracts	4,946	5,713
Charges and services	11,219	5,090
Utilities	2,028	3,180
Inter-governmental	7,449	7,481
Other expenses	2,912	2,153
Total operating expenses before depreciation	57,491	52,951
Operating Income Before Depreciation	24,580	39,879
Depreciation Expense	28,649	33,090
Operating Income (Loss)	(4,069)	6,789
Non-Operating Revenues (Expenses)		
Passenger facility charges	10,942	25,149
Customer facility charges	3,005	7,735
Interest income	781	12,169
Interest expense	(48,778)	(43,018)
Other revenue (expenses), net	(36)	1,662
Net non-operating income (loss)	(34,086)	3,697
Capital Contributions		
Contributions and grants	17,428	12,949
Total capital contributions	17,428	12,949
Net Position		
Increase (decrease) in net position	(20,727)	23,435
Net Position, beginning of period	1,430,572	1,417,152
Net Position, end of period	\$ 1,409,845	\$ 1,440,587

SALT LAKE CITY DEPARTMENT OF AIRPORTS

(An Enterprise fund of Salt Lake City Corporation)

OPERATING REVENUES AND EXPENDITURES TO BUDGET (Unaudited)

(Amounts in Thousands)

	Jul 2020 - Dec 2020 ACTUALS	Jul 2020 - Dec 2020 BUDGET	SURPLUS/ DEFICIT	PERCENT CHANGE
Revenues				
Landing Fees	\$ 24,058	\$ 29,512	\$ (5,454)	-18.5%
Fuel Farm	397	269	128	47.6%
Aircraft Remain Overnight Fees	227	116	111	95.8%
Cargo Bldg. & Ramp Use Fee	869	836	33	4.0%
Security Charges to TSA	378	391	(13)	-3.3%
Extraordinary Service Charges	71	28	43	152.2%
Passenger Boarding Bridges	665	955	(290)	-30.4%
Tenant Telephone Fees	80	71	9	12.9%
Terminal Rents	28,353	45,563	(17,210)	-37.8%
General Aviation Hangars	621	624	(3)	-0.5%
FBO Hangars/Fuel Oil Royalty	254	217	37	17.1%
Flight Kitchens	468	583	(115)	-19.8%
Other Buildings & Office Space	2,974	2,788	186	6.7%
Food Service & Vending	2,265	4,431	(2,166)	-48.9%
News/Gift Shop	947	2,550	(1,603)	-62.9%
Car Rental	9,220	10,578	(1,358)	-12.8%
Leased Site Areas	2,044	1,411	633	44.9%
Auto Parking/Ground Transportation	7,976	16,842	(8,866)	-52.6%
Advertising	181	379	(198)	-52.1%
State Aviation Fuel Tax	521	924	(403)	-43.6%
Military	78	78	-	0.0%
Glycol Recycling Sales	117	177	(60)	-34.0%
Auxiliary Airport Fuel Sales	590	717	(127)	-17.8%
Other	1,587	3,801	(2,214)	-58.2%
Less: Airline Revenue Sharing	(2,870)	(4,039)	1,169	-28.94%
Total Operating Revenues	82,071	119,802	(37,731)	-31.5%
Expenses				
Salary & Wages	18,027	19,726	1,699	8.6%
Employee Benefits	8,142	9,020	878	9.7%
Maintenance Supplies	1,808	4,060	2,252	55.5%
Automotive Supplies	1,064	2,491	1,427	57.3%
Other Supplies	505	2,158	1,653	76.6%
Insurance Premiums	2,520	1,902	(618)	-32.5%
Janitorial Service	4,161	6,286	2,125	33.8%
Maintenance Contracts	785	1,763	978	55.5%
Other Contractual Services	4,921	9,118	4,197	46.0%
Professional & Tech Services	6,298	2,937	(3,361)	-114.4%
Utilities	2,028	3,795	1,767	46.6%
Administrative Service Fee	668	919	251	27.3%
Aircraft Rescue Fire Fighting	2,631	2,631	(0)	0.0%
Police Services	4,150	4,150	(0)	0.0%
Other Expenses	392	1,356	964	71.1%
Contingency Reserve	-	500	500	100.0%
Operating Expenses Before Capitalized Salaries	58,100	72,812	14,712	20.2%
Capitalized Salaries	609	609	-	0.0%
Total Operating Expenses	57,491	72,203	14,712	20.4%
Operating Income	\$ 24,580	\$ 47,599	\$ (23,019)	-48.4%

SALT LAKE CITY DEPARTMENT OF AIRPORTS

(An Enterprise fund of Salt Lake City Corporation)

OPERATING REVENUES AND EXPENDITURES TO PRIOR YEAR (Unaudited)

(Amounts in Thousands)

	Jul 2020 - Dec 2020	Jul 2019 - Dec 2019	DOLLAR CHANGE	PERCENT CHANGE
Revenues				
Landing Fees	\$ 24,058	\$ 21,140	\$ 2,918	13.8%
Fuel Farm	397	269	128	47.6%
Aircraft Remain Overnight Fees	227	119	108	91.1%
Cargo Bldg. & Ramp Use Fee	869	831	38	4.6%
Security Charges to TSA	378	389	(11)	-2.8%
Extraordinary Service Charges	71	21	50	238.3%
Passenger Boarding Bridges	665	1,011	(346)	-34.2%
Tenant Telephone Fees	80	140	(60)	-42.8%
Terminal Rents	28,353	19,696	8,657	44.0%
General Aviation Hangars	621	649	(28)	-4.2%
FBO Hangars/Fuel Oil Royalty	254	216	38	17.5%
Flight Kitchens	468	931	(463)	-49.7%
Other Buildings & Office Space	2,974	2,765	209	7.6%
Food Service & Vending	2,265	6,480	(4,215)	-65.0%
News/Gift Shops	947	3,569	(2,622)	-73.5%
Car Rental	9,220	14,596	(5,376)	-36.8%
Leased Site Areas	2,044	1,412	632	44.8%
Auto Parking/Ground Transportation	7,976	22,157	(14,181)	-64.0%
Advertising	181	546	(365)	-66.9%
State Aviation Fuel Tax	521	1,519	(998)	-65.7%
Military	78	75	3	4.1%
Glycol Recycling Sales	117	199	(82)	-41.3%
Auxiliary Airport Fuel Sales	590	672	(82)	-12.2%
Other	1,587	743	844	113.6%
Less: Airline Revenue Sharing	(2,870)	(7,315)	4,445	-60.8%
Operating Revenues	82,071	92,830	(10,759)	-11.6%
Expenses				
Salary & Wages	\$ 18,027	\$ 17,066	\$ 961	5.6%
Employee Benefits	8,142	7,752	390	5.0%
Maintenance Supplies	1,808	3,314	(1,506)	-45.4%
Automotive Supplies	1,064	1,328	(264)	-19.9%
Other Supplies	505	507	(2)	-0.4%
Insurance Premiums	2,520	1,478	1,042	70.5%
Janitorial Service	4,161	4,495	(334)	-7.4%
Maintenance Contracts	785	1,218	(433)	-35.6%
Other Contractual Services	4,921	3,733	1,188	31.8%
Professional & Tech Service	6,298	1,356	4,942	364.3%
Utilities	2,028	3,180	(1,152)	-36.2%
Administrative Service Fee	668	777	(109)	-14.0%
Aircraft Rescue Fire Fighting	2,631	2,554	77	3.0%
Police Services	4,150	4,150	0	0.0%
Other Expenses	392	675	(283)	-41.9%
Operating Expenses Before Capitalized Salaries	58,100	53,583	4,517	8.4%
Capitalized Salaries	609	632	(23)	-3.6%
Total Operating Expenses	57,491	52,951	4,540	8.6%
Operating Income	\$ 24,580	\$ 39,879	\$ (15,299)	-38.4%



**SALT LAKE CITY INTERNATIONAL AIRPORT
AIR TRAFFIC STATISTICS AND ACTIVITY REPORT
TWELVE MONTHS ENDED DECEMBER 2020**

	December 2020	CHANGE	YTD 2020	CHANGE	12 MO ROLLING Ending 12/2020	CHANGE
PASSENGERS						
<i>DOMESTIC</i>						
Enplaned	522,367	-50.70%	6,125,470	-52.31%	6,125,470	-52.31%
Deplaned	539,585	-50.68%	6,102,147	-52.50%	6,102,147	-52.50%
TOTAL DOMESTIC	1,061,952	-50.69%	12,227,617	-52.41%	12,227,617	-52.41%
<i>INTERNATIONAL</i>						
Enplaned	17,804	-53.76%	159,982	-70.88%	159,982	-70.88%
Deplaned	15,839	-57.82%	171,427	-69.74%	171,427	-69.74%
TOTAL INTERNATIONAL	33,643	-55.77%	331,409	-70.30%	331,409	-70.30%
TOTAL PASSENGERS	1,095,595	-50.86%	12,559,026	-53.15%	12,559,026	-53.15%
LANDED WEIGHT						
Air Carriers	1,042,947,554	-14.86%	10,647,182,180	-26.68%	10,647,182,180	-26.68%
Cargo Carriers	177,088,860	16.59%	1,336,130,054	10.58%	1,336,130,054	10.58%
TOTAL LANDED WEIGHT (LBS)	1,220,036,414	-11.39%	11,983,312,234	-23.81%	11,983,312,234	-23.81%
MAIL						
Enplaned	1,419,123	-8.40%	33,545,953	25.45%	33,545,953	25.45%
Deplaned	1,040,231	-9.43%	20,250,787	36.46%	20,250,787	36.46%
TOTAL MAIL (LBS)	2,459,354	-8.84%	53,796,740	29.38%	53,796,740	29.38%
CARGO						
Enplaned	23,757,487	14.37%	210,749,086	7.12%	210,749,086	7.12%
Deplaned	21,860,335	6.52%	209,288,765	1.96%	209,288,765	1.96%
TOTAL CARGO (LBS)	45,617,822	10.47%	420,037,851	4.48%	420,037,851	4.48%
MAIL & CARGO						
Enplaned	11,879	14.38%	105,375	7.12%	105,375	7.12%
Deplaned	10,930	6.51%	104,644	1.96%	104,644	1.96%
TOTAL MAIL & CARGO (TONS)	22,809	10.47%	210,019	4.48%	210,019	4.48%
AIRCRAFT OPERATIONS						
Passenger Aircraft	18,450	-14.62%	187,906	-26.73%	187,906	-26.73%
All-Cargo Aircraft	2,324	10.88%	20,706	1.58%	20,706	1.58%
General Aviation	5,459	8.88%	65,134	2.23%	65,134	2.23%
Military	219	57.55%	2,984	-26.65%	2,984	-26.65%
TOTAL AIRCRAFT OPERATIONS	26,452	-8.34%	276,730	-19.70%	276,730	-19.70%

**SALT LAKE CITY INTERNATIONAL AIRPORT
PASSENGER TRAFFIC REPORT
TWELVE MONTHS ENDED DECEMBER 2020**

	December 2019	December 2020	% CHANGE	YTD 2019	YTD 2020	% CHANGE	12 MO ROLLING Ending 12/2020	% CHANGE
ENPLANED PASSENGERS								
AEROMEXICO	3,916	-	-100.0%	49,685	11,436	-77.0%	11,436	-77.0%
ALASKA	8,724	1,137	-87.0%	163,784	48,209	-70.6%	48,209	-70.6%
Horizon Air / Alaska	1,054	1,908	81.0%	7,763	11,866	52.9%	11,866	52.9%
Skywest / Alaska	14,983	7,708	-48.6%	154,890	79,324	-48.8%	79,324	-48.8%
AMERICAN	54,849	30,981	-43.5%	619,661	342,342	-44.8%	342,342	-44.8%
Compass	2,901	-	-100.0%	24,966	6,563	-73.7%	6,563	-73.7%
Envoy Air	-	-	0.0%	-	733	100.0%	733	100.0%
American/Mesa Air	-	103	100.0%	6,283	921	-85.3%	921	-85.3%
Republic	-	-	0.0%	-	816	100.0%	816	100.0%
SkyWest (American)	6,104	6,693	9.6%	81,777	62,027	-24.2%	62,027	-24.2%
DELTA	598,884	284,615	-52.5%	7,264,163	3,382,631	-53.4%	3,382,631	-53.4%
SkyWest (Delta Connection)	202,599	102,351	-49.5%	2,065,187	1,142,707	-44.7%	1,142,707	-44.7%
Compass (Delta Connection)	1,165	-	-100.0%	387,588	-	-100.0%	-	-100.0%
FRONTIER	21,710	16,863	-22.3%	245,216	145,038	-40.9%	145,038	-40.9%
JETBLUE	31,767	7,005	-77.9%	381,114	116,597	-69.4%	116,597	-69.4%
KLM ROYAL DUTCH AIRLINES	-	-	0.0%	20,282	-	-100.0%	-	-100.0%
SOUTHWEST	95,949	53,437	-44.3%	1,298,247	629,305	-51.5%	629,305	-51.5%
UNITED	16,901	9,626	-43.0%	225,645	133,865	-40.7%	133,865	-40.7%
GoJet Airlines	119	-	-100.0%	15,916	-	-100.0%	-	-100.0%
Express Jet	274	-	-100.0%	6,230	600	-90.4%	600	-90.4%
Mesa Airlines (United Express)	3,413	97	-97.2%	22,065	5,747	-74.0%	5,747	-74.0%
Republic Airways (United)	1,853	589	-68.2%	56,401	2,542	-95.5%	2,542	-95.5%
SkyWest (United Express)	30,736	17,058	-44.5%	296,045	161,928	-45.3%	161,928	-45.3%
Trans States	-	-	0.0%	-	-	0.0%	-	0.0%
Charters	131	-	-100.0%	1,335	255	-80.9%	255	-80.9%
West Coast Charters	-	0	0.0%	-	0	0.0%	0	0.0%
TOTAL ENPLANED PASSENGERS	1,098,032	540,171	-50.8%	13,394,243	6,285,452	-53.1%	6,285,452	-53.1%
DEPLANED PASSENGERS								
AeroMexico	4,113	-	-100.0%	50,355	11,393	-77.4%	11,393	-77.4%
ALASKA AIR	8,958	979	-89.1%	155,139	46,574	-70.0%	46,574	-70.0%
Horizon Air / Alaska	1,091	1,941	77.9%	7,934	12,015	51.4%	12,015	51.4%
Skywest / Alaska	15,417	7,944	-48.5%	156,976	82,709	-47.3%	82,709	-47.3%
AMERICAN	56,188	32,022	-43.0%	640,646	334,993	-47.7%	334,993	-47.7%
Compass	3,188	-	-100.0%	25,468	6,494	-74.5%	6,494	-74.5%
Envoy Air (American)	-	-	0.0%	-	722	100.0%	722	100.0%
Mesa Air	-	120	100.0%	5,399	997	-81.5%	997	-81.5%
Republic	-	-	0.0%	-	766	100.0%	766	100.0%
SkyWest (American)	6,923	7,427	7.3%	87,498	62,902	-28.1%	62,902	-28.1%
DELTA	621,292	292,571	-52.9%	7,275,877	3,389,508	-53.4%	3,389,508	-53.4%
SkyWest (Delta Connection)	204,283	102,739	-49.7%	2,070,125	1,138,216	-45.0%	1,138,216	-45.0%
Compass (Delta Connection)	1,348	-	-100.0%	373,930	-	-100.0%	-	-100.0%
FRONTIER	21,975	17,105	-22.2%	245,441	146,898	-40.1%	146,898	-40.1%
JETBLUE	33,544	7,676	-77.1%	379,080	118,974	-68.6%	118,974	-68.6%
KLM ROYAL DUTCH AIRLINES	-	-	0.0%	35,450	-	-100.0%	-	-100.0%
SOUTHWEST	97,593	54,456	-44.2%	1,287,529	619,382	-51.9%	619,382	-51.9%
UNITED	17,063	12,082	-29.2%	222,440	131,167	-41.0%	131,167	-41.0%
GoJet Airlines	128	-	-100.0%	15,895	-	-100.0%	-	-100.0%
Express Jet	265	-	-100.0%	5,850	582	-90.1%	582	-90.1%
Mesa Airlines / United Express	3,536	113	-96.8%	21,422	5,710	-73.3%	5,710	-73.3%
Republic Airways (United)	2,114	765	-63.8%	58,451	2,802	-95.2%	2,802	-95.2%
SkyWest (United Express)	32,352	17,484	-46.0%	291,409	160,579	-44.9%	160,579	-44.9%
Trans States	-	-	0.0%	-	-	0.0%	-	0.0%
Charters	134	-	-100.0%	1,457	191	-86.9%	191	-86.9%
West Coast Charters	-	-	0.0%	-	-	0.0%	-	0.0%
TOTAL DEPLANED PASSENGERS	1,131,505	555,424	-50.9%	13,413,771	6,273,574	-53.2%	6,273,574	-53.2%
TOTAL PASSENGERS*	2,229,537	1,095,595	-50.9%	26,808,014	12,559,026	-53.2%	12,559,026	-53.2%
INTERNATIONAL - ENPLANED								
AEROMEXICO	3,916	-	-100.0%	49,685	11,436	-77.0%	11,436	-77.0%
DELTA	29,228	17,804	-39.1%	413,713	142,728	-65.5%	142,728	-65.5%
SkyWest (Delta Connection)	4,931	-	-100.0%	24,035	5,736	-76.1%	5,736	-76.1%
Compass	431	-	-100.0%	41,616	-	-100.0%	-	-100.0%
KLM ROYAL DUTCH AIRLINES	-	-	0.0%	20,282	-	-100.0%	-	-100.0%
Charters	-	-	0.0%	-	82	100.0%	82	100.0%
TOTAL ENPLANED INTERNATIONAL	38,506	17,804	-53.8%	549,331	159,982	-70.9%	159,982	-70.9%
DEPLANED INTERNATIONAL								
AEROMEXICO	4,113	-	-100.0%	50,355	11,393	-77.4%	11,393	-77.4%
DELTA	28,186	15,839	-43.8%	411,496	150,745	-63.4%	150,745	-63.4%
SkyWest (Delta Connection)	4,662	-	-100.0%	28,280	9,289	-67.2%	9,289	-67.2%
Compass	589	-	-100.0%	40,939	-	-100.0%	-	-100.0%
KLM ROYAL DUTCH AIRLINES	-	-	0.0%	35,450	-	-100.0%	-	-100.0%
Charters	-	-	0.0%	-	-	0.0%	-	0.0%
TOTAL DEPLANED INTERNATIONAL	37,550	15,839	-57.8%	566,520	171,427	-69.7%	171,427	-69.7%
TOTAL INTERNATIONAL PASSENGERS	76,056	33,643	-55.8%	1,115,851	331,409	-70.3%	331,409	-70.3%

*Includes International

**SALT LAKE CITY INTERNATIONAL AIRPORT
TWELVE MONTHS ENDED DECEMBER 2020**
Based on Total Enplanements

MARKET SHARE

	December 2019	MARKET SHARE	December 2020	MARKET SHARE	YTD 2019	MARKET SHARE	YTD 2020	MARKET SHARE	12 MO ROLLING Ending 12/2019	12 MO ROLLING Ending 12/2020	MARKET SHARE
AEROMEXICO	3,916	0.36%	-	0.00%	49,685	0.37%	11,436	0.18%	49,685	11,436	0.18%
ALASKA	24,761	2.26%	10,753	1.99%	326,437	2.44%	139,399	2.22%	326,437	139,399	2.22%
AMERICAN	63,854	5.82%	37,777	6.99%	732,687	5.47%	413,402	6.58%	732,687	413,402	6.58%
DELTA	802,648	73.10%	386,966	71.64%	9,716,938	72.55%	4,525,338	72.00%	9,716,938	4,525,338	72.00%
FRONTIER	21,710	1.98%	16,863	3.12%	245,216	1.83%	145,038	2.31%	245,216	145,038	2.31%
JETBLUE	31,767	2.89%	7,005	1.30%	381,114	2.85%	116,597	1.86%	381,114	116,597	1.86%
KLM ROYAL DUTCH	-	0.00%	-	0.00%	20,282	0.15%	-	0.00%	20,282	-	0.00%
SOUTHWEST	95,949	8.74%	53,437	9.89%	1,298,247	9.69%	629,305	10.01%	1,298,247	629,305	10.01%
UNITED	53,296	4.85%	27,370	5.07%	622,302	4.65%	304,682	4.85%	622,302	304,682	4.85%
Charters	131	0.01%	-	0.00%	1,335	0.01%	255	0.00%	1,335	255	0.00%
TOTAL ENPLANEMENTS	1,098,032	100%	540,171	100%	13,394,243	100%	6,285,452	100%	13,394,243	6,285,452	100%

PERCENT CHANGE YOY

	December 2019	December 2020	PERCENT CHANGE	YTD 2019	YTD 2020	PERCENT CHANGE	12 MO ROLLING Ending 12/2019	12 MO ROLLING Ending 12/2020	PERCENT CHANGE
AEROMEXICO	3,916	-	100.00%	49,685	11,436	100.00%	49,685	11,436	-76.98%
ALASKA	24,761	10,753	-56.57%	326,437	139,399	-57.30%	326,437	139,399	-57.30%
AMERICAN	63,854	37,777	-40.84%	732,687	413,402	-43.58%	732,687	413,402	-43.58%
DELTA	802,648	386,966	-51.79%	9,716,938	4,525,338	-53.43%	9,716,938	4,525,338	-53.43%
FRONTIER	21,710	16,863	-22.33%	245,216	145,038	-40.85%	245,216	145,038	-40.85%
JETBLUE	31,767	7,005	-77.95%	381,114	116,597	-69.41%	381,114	116,597	-69.41%
KLM ROYAL DUTCH	-	-	0.00%	20,282	-	0.00%	20,282	-	-100.00%
SOUTHWEST	95,949	53,437	-44.31%	1,298,247	629,305	-51.53%	1,298,247	629,305	-51.53%
UNITED	53,296	27,370	-48.65%	622,302	304,682	-51.04%	622,302	304,682	-51.04%
Charters	131	-	-100.00%	1,335	255	-80.90%	1,335	255	-80.90%
TOTAL ENPLANEMENTS	1,098,032	540,171	-50.8%	13,394,243	6,285,452	-53.1%	13,394,243	6,285,452	-53.1%

**SALT LAKE CITY INTERNATIONAL AIRPORT
LANDING ACTIVITY
TWELVE MONTHS ENDED DECEMBER 2020**

	December 2019	December 2020	CHANGE	YTD 2019	YTD 2020	CHANGE	12 MO ROLLING Ending 12/2020	% CHANGE
TOTAL NUMBER OF LANDINGS								
SCHEDULED CARRIERS								
AEROMEXICO	31	-	-100.0%	364	109	-70.1%	109	-70.1%
ALASKA	62	21	-66.1%	1,184	464	-60.8%	464	-60.8%
Horizon Air / Alaska	15	47	213.3%	114	256	124.6%	256	124.6%
Skywest / Alaska	228	201	-11.8%	2,332	1,861	-20.2%	1,861	-20.2%
AMERICAN	383	223	-41.8%	4,401	2,711	-38.4%	2,711	-38.4%
Compass	46	-	-100.0%	369	102	-72.4%	102	-72.4%
American/Mesa Air	-	2	100.0%	85	16	-81.2%	16	-81.2%
Envoy Air (American)	1	-	-100.0%	1	14	1300.0%	14	1300.0%
Republic/ (American)	-	-	0.0%	-	12	100.0%	12	100.0%
SkyWest (American)	110	145	31.8%	1,379	1,269	-8.0%	1,269	-8.0%
DELTA	4,207	3,798	-9.7%	50,376	38,329	-23.9%	38,329	-23.9%
SkyWest (Delta Connection)	3,615	3,399	-6.0%	36,947	32,699	-11.5%	32,699	-11.5%
Compass (Delta Connection)	19	-	-100.0%	5,614	1	-100.0%	1	-100.0%
FRONTIER	138	127	-8.0%	1,486	1,107	-25.5%	1,107	-25.5%
JETBLUE	246	85	-65.4%	2,813	1,229	-56.3%	1,229	-56.3%
KLM ROYAL DUTCH AIRLINES	-	-	0.0%	86	-	-100.0%	-	-100.0%
SOUTHWEST	746	464	-37.8%	10,641	6,994	-34.3%	6,994	-34.3%
UNITED	130	118	-9.2%	1,735	1,183	-31.8%	1,183	-31.8%
GoJet	2	-	-100.0%	307	-	-100.0%	-	-100.0%
Express Jet	4	-	-100.0%	95	10	-89.5%	10	-89.5%
Mesa / United Express	48	2	-95.8%	307	100	-67.4%	100	-67.4%
Republic Airways Holdings	30	12	-60.0%	867	44	-94.9%	44	-94.9%
SkyWest (United Express)	506	352	-30.4%	4,583	3,225	-29.6%	3,225	-29.6%
Trans States	-	-	0.0%	-	-	0.0%	-	0.0%
SUBTOTAL SCHEDULED CARRIERS:	10,567	8,996	-14.9%	126,086	91,735	-27.2%	91,735	-27.2%
CHARTER CARRIERS								
ALLEGiant AIR	1	-	-100.0%	9	-	-100.0%	-	-100.0%
BOMBARDIER BUSINESS JETS	53	62	17.0%	434	512	18.0%	512	18.0%
BOUTIQUE AIR	-	-	0.0%	-	-	0.0%	-	0.0%
DELTA PRIVATE JETS	-	-	0.0%	-	-	0.0%	-	0.0%
EXECUTIVE JET MANAGEMENT	-	-	0.0%	-	-	0.0%	-	0.0%
FLIGHT OPTIONS	-	-	0.0%	-	-	0.0%	-	0.0%
KALITTA CHARTERS	7	7	0.0%	69	66	-4.3%	66	-4.3%
KEYLIME AIR	-	-	0.0%	14	2	-85.7%	2	-85.7%
NETJETS	166	167	0.6%	1,518	1,485	-2.2%	1,485	-2.2%
SUNSET AVIATION	-	-	0.0%	-	-	0.0%	-	0.0%
SWIFT AIR	-	-	0.0%	-	-	0.0%	-	0.0%
VIRGIN AMERICA	-	-	0.0%	-	-	0.0%	-	0.0%
XOJET	18	-	-100.0%	149	213	43.0%	213	43.0%
OTHER CHARTER	-	-	0.0%	6	5	-16.7%	5	-16.7%
SUBTOTAL CHARTER CARRIERS:	245	236	-3.7%	2,199	2,283	3.8%	2,283	3.8%
CARGO CARRIERS								
ABX AIR	-	-	0.0%	1	-	-100.0%	-	-100.0%
AERO CHARTER & TRANSPORT	-	-	0.0%	-	-	0.0%	-	0.0%
AIR TRANSPORT INTERNATIONAL	-	-	0.0%	-	-	0.0%	-	0.0%
ALPINE AVIATION	185	151	-18.4%	2,187	2,056	-6.0%	2,056	-6.0%
AMERIFLIGHT	187	178	-4.8%	1,858	1,488	-19.9%	1,488	-19.9%
CORPORATE AIR (BILLINGS)	141	156	10.6%	1,545	1,428	-7.6%	1,428	-7.6%
EMPIRE	15	20	33.3%	189	190	0.5%	190	0.5%
FEDERAL EXPRESS	189	231	22.2%	1,741	1,918	10.2%	1,918	10.2%
GEM AIR	84	115	36.9%	665	714	7.4%	714	7.4%
SOUTHERN AIR	18	-	-100.0%	334	137	-59.0%	137	-59.0%
UPS	219	274	25.1%	1,530	2,048	33.9%	2,048	33.9%
WESTERN AIR EXPRESS	3	28	833.3%	63	287	355.6%	287	355.6%
OTHER CARGO	-	2	100.0%	24	22	-8.3%	22	-8.3%
SUBTOTAL CARGO CARRIERS:	1,041	1,155	11.0%	10,137	10,288	1.5%	10,288	1.5%
TOTAL LANDINGS	11,853	10,387	-12.4%	138,422	104,306	-24.6%	104,306	-24.6%
TOTAL LANDED WEIGHT								
SCHEDULED CARRIERS								
AEROMEXICO	2,945,000	-	-100.0%	34,580,000	10,355,000	-70.1%	10,355,000	-70.1%
ALASKA	9,390,400	3,116,600	-66.8%	176,511,538	70,390,124	-60.1%	70,390,124	-60.1%
Horizon Air / Alaska	1,124,355	3,522,979	213.3%	8,545,098	19,188,992	124.6%	19,188,992	124.6%
Skywest / Alaska	17,090,196	15,066,357	-11.8%	174,799,724	139,494,977	-20.2%	139,494,977	-20.2%
AMERICAN	56,641,926	35,324,044	-37.6%	643,967,654	404,366,302	-37.2%	404,366,302	-37.2%
Compass	3,447,700	-	-100.0%	27,656,550	7,644,900	-72.4%	7,644,900	-72.4%
Envoy Air (American)	74,950	-	-100.0%	74,950	1,049,300	1300.0%	1,049,300	1300.0%
American/Mesa Air	-	150,200	100.0%	6,306,700	1,193,600	-81.1%	1,193,600	-81.1%
Republic (American)	-	-	0.0%	-	899,400	100.0%	899,400	100.0%
SkyWest (American)	7,370,000	9,715,000	31.8%	92,393,000	85,023,000	-8.0%	85,023,000	-8.0%
DELTA	667,852,357	610,666,227	-8.6%	7,779,552,255	5,985,300,348	-23.1%	5,985,300,348	-23.1%
SkyWest (Delta Connection)	237,264,373	226,602,714	-4.5%	2,360,156,209	2,199,144,507	-6.8%	2,199,144,507	-6.8%
Compass (Delta Connection)	1,428,363	-	-100.0%	422,043,678	75,177	-100.0%	75,177	-100.0%
FRONTIER	20,541,430	18,352,346	-10.7%	220,905,864	157,292,676	-28.8%	157,292,676	-28.8%
JETBLUE	34,981,200	12,087,000	-65.4%	400,008,600	174,763,800	-56.3%	174,763,800	-56.3%

**SALT LAKE CITY INTERNATIONAL AIRPORT
LANDING ACTIVITY
TWELVE MONTHS ENDED DECEMBER 2020**

	December 2019	December 2020	CHANGE	YTD 2019	YTD 2020	CHANGE	12 MO ROLLING Ending 12/2020	% CHANGE
KLM ROYAL DUTCH AIRLINES	-	-	0.0%	36,684,163	-	-100.0%	-	-100.0%
SOUTHWEST	97,664,000	60,464,000	-38.1%	1,391,014,400	920,768,000	-33.8%	920,768,000	-33.8%
UNITED	18,504,880	16,818,380	-9.1%	244,559,520	168,210,960	-31.2%	168,210,960	-31.2%
GoJet	134,000	-	-100.0%	20,569,000	-	-100.0%	-	-100.0%
Express Jet	300,000	-	-100.0%	7,103,100	750,000	-89.4%	750,000	-89.4%
Mesa / United Express	3,600,000	150,000	-95.8%	23,025,000	7,500,000	-67.4%	7,500,000	-67.4%
Republic Airways Holdings	2,190,520	878,400	-59.9%	63,385,436	3,197,386	-95.0%	3,197,386	-95.0%
SkyWest (United Express)	34,587,380	22,983,572	-33.5%	318,986,409	220,375,238	-30.9%	220,375,238	-30.9%
Trans States	-	-	0.0%	-	-	0.0%	-	0.0%
SUBTOTAL SCHEDULED CARRIERS:	1,217,133,030	1,035,897,819	-14.9%	14,452,828,848	10,576,983,687	-26.8%	10,576,983,687	-26.8%
CHARTER CARRIERS								
ALLEGIAN AIR	142,198	-	-100.0%	1,218,046	-	-100.0%	-	-100.0%
BOMBARDIER	1,872,465	2,036,084	8.7%	14,760,773	17,003,405	15.2%	17,003,405	15.2%
BOUTIQUE AIR	-	-	0.0%	-	-	0.0%	-	0.0%
DELTA PRIVATE JETS	-	-	0.0%	-	-	0.0%	-	0.0%
EXECUTIVE JET MANAGEMENT	-	-	0.0%	-	-	0.0%	-	0.0%
FLIGHT OPTIONS	-	-	0.0%	-	-	0.0%	-	0.0%
KALITTA CHARTERS	324,500	496,300	52.9%	1,592,820	1,686,540	5.9%	1,686,540	5.9%
KEYLIME AIR	-	-	0.0%	438,206	63,448	-85.5%	63,448	-85.5%
MIAMI AIR	-	-	0.0%	731,500	438,900	-40.0%	438,900	-40.0%
NETJETS	5,082,793	5,013,651	-1.4%	45,613,032	44,602,240	-2.2%	44,602,240	-2.2%
SIERRA PACIFIC	-	-	0.0%	110,000	220,000	100.0%	220,000	100.0%
SUN COUNTRY	-	-	0.0%	-	-	0.0%	-	0.0%
SWIFT AIR	-	-	0.0%	-	-	0.0%	-	0.0%
VIRGIN AMERICA	-	-	0.0%	-	-	0.0%	-	0.0%
XOJET	678,100	-	-100.0%	4,952,800	7,855,200	58.6%	7,855,200	58.6%
OTHER CHARTER	-	-	0.0%	-	-	0.0%	-	0.0%
SUBTOTAL CHARTER CARRIERS:	8,100,056	7,546,035	-6.8%	69,417,177	71,869,733	3.5%	71,869,733	3.5%
CARGO CARRIERS								
ABX AIR INC	-	-	0.0%	283,000	-	-	-	-100.0%
AERO CHARTER & TRANSPORT	-	-	0.0%	-	-	0.0%	-	0.0%
AIR TRANSPORT INTERNATIONAL	-	-	0.0%	-	-	0.0%	-	0.0%
ALPINE AVIATION	2,604,100	2,306,300	-11.4%	30,759,500	28,957,200	-5.9%	28,957,200	-5.9%
AMERIFLIGHT	2,701,050	2,235,400	-17.2%	26,802,590	21,083,950	-21.3%	21,083,950	-21.3%
AMERISTAR	-	-	0.0%	121,500	299,700	146.7%	299,700	146.7%
ATLAS AIR	-	544,000	100.0%	5,030,000	4,981,000	-1.0%	4,981,000	-1.0%
CORPORATE AIR (BILLINGS)	1,198,500	1,326,000	10.6%	13,132,500	12,138,000	-7.6%	12,138,000	-7.6%
EMPIRE	695,107	941,360	35.4%	7,263,986	7,284,144	0.3%	7,284,144	0.3%
FEDEX EXPRESS	64,353,200	77,176,000	19.9%	604,239,400	639,260,100	5.8%	639,260,100	5.8%
GEM AIR	694,500	949,000	36.6%	5,619,500	5,986,500	6.5%	5,986,500	6.5%
KALITTA AIR	-	-	0.0%	1,304,000	-	-100.0%	-	-100.0%
SOUTHERN AIR INC	2,183,798	-	-100.0%	40,906,830	16,634,980	-59.3%	16,634,980	-59.3%
UPS	77,099,140	90,757,300	17.7%	470,682,200	594,097,040	26.2%	594,097,040	26.2%
WESTERN AIR EXPRESS	39,000	357,200	815.9%	819,000	3,736,200	356.2%	3,736,200	356.2%
OTHER CARGO	-	-	0.0%	-	-	0.0%	-	0.0%
SUBTOTAL CARGO CARRIERS:	151,568,395	176,592,560	16.5%	1,206,964,006	1,334,458,814	10.6%	1,334,458,814	10.6%
TOTAL LANDED WEIGHT	1,376,801,481	1,220,036,414	-11.4%	15,729,210,031	11,983,312,234	-23.8%	11,983,312,234	-23.8%

**SALT LAKE CITY INTERNATIONAL AIRPORT
CARGO ACTIVITY REPORT
TWELVE MONTHS ENDED DECEMBER 2020**

	December 2019	December 2020	CHANGE	YTD 2019	YTD 2020	CHANGE	12 MO ROLLING Ending 12/2020	% CHANGE
ENPLANED CARGO								
PASSENGER CARRIERS								
ALASKA	20,048	8,488	-57.66%	266,387	113,252	-57.49%	113,252	-57.49%
Horizon Air / Alaska	158	1,048	563.29%	1,337	18,156	1257.97%	18,156	1257.97%
Skywest / Alaska	1,456	8,288	469.23%	18,241	126,209	591.90%	126,209	591.90%
AMERICAN	19,155	4,396	-77.05%	366,141	103,937	-71.61%	103,937	-71.61%
American Eagle/Republic	-	-	0.00%	-	-	0.00%	-	0.00%
Compass	300	-	-100.00%	344	120	-65.12%	120	-65.12%
Envoy Air (American)	-	-	0.00%	-	-	0.00%	-	0.00%
Mesa	-	-	0.00%	-	-	0.00%	-	0.00%
SkyWest (American)	856	1,927	125.12%	8,770	408,996	4563.58%	408,996	4563.58%
DELTA	774,925	403,259	-47.96%	7,601,960	4,456,391	-41.38%	4,456,391	-41.38%
KLM ROYAL DUTCH	-	-	0.00%	1,041,237	-	-100.00%	-	-100.00%
SOUTHWEST	232,215	166,707	-28.21%	3,778,736	2,288,086	-39.45%	2,288,086	-39.45%
UNITED	16,399	9,012	-45.05%	78,265	64,297	-17.85%	64,297	-17.85%
Others	39,240	12,553	-68.01%	40,340	56,846	40.92%	56,846	40.92%
CARGO CARRIERS								
FEDEX EXPRESS*	10,684,258	12,632,723	18.24%	106,886,479	120,129,315	12.39%	120,129,315	12.39%
GEM AIR	97,252	118,783	22.14%	734,652	973,562	32.52%	973,562	32.52%
SOUTHERN AIR	6,421	-	-100.00%	1,662,630	251,000	-84.90%	251,000	-84.90%
UPS	7,827,755	9,235,880	17.99%	62,266,672	69,900,167	12.26%	69,900,167	12.26%
MISC CARGO	1,051,484	1,154,423	9.79%	11,994,428	11,858,752	-1.13%	11,858,752	-1.13%
ABX AIR	-	-	0.00%	-	-	0.00%	-	0.00%
TOTAL ENPLANED CARGO	20,771,922	23,757,487	14.37%	196,746,619	210,749,086	7.12%	210,749,086	7.12%
DEPLANED CARGO								
PASSENGER CARRIERS								
ALASKA	10,931	2,027	-81.46%	283,647	64,237	-77.35%	64,237	-77.35%
Horizon Air / Alaska	90	1,526	1595.56%	5,830	26,295	351.03%	26,295	351.03%
Skywest / Alaska	9,459	6,708	-29.08%	50,654	94,886	87.32%	94,886	87.32%
AMERICAN	20,610	22,031	6.89%	276,872	279,812	1.06%	279,812	1.06%
American Eagle/Republic	-	-	0.00%	-	-	0.00%	-	0.00%
Compass	70	-	-100.00%	436	187	-57.11%	187	-57.11%
Envoy Air (American)	-	-	0.00%	-	-	0.00%	-	0.00%
SkyWest (American)	556	2,460	342.45%	5,466	13,055	138.84%	13,055	138.84%
DELTA	936,507	517,388	-44.75%	10,682,616	6,047,854	-43.39%	6,047,854	-43.39%
KLM ROYAL DUTCH	-	-	0.00%	1,253,539	-	-100.00%	-	-100.00%
SOUTHWEST	390,667	370,085	-5.27%	4,988,933	3,385,133	-32.15%	3,385,133	-32.15%
UNITED	46,834	19,667	-58.01%	426,371	150,295	-64.75%	150,295	-64.75%
Others	67,058	93,589	39.56%	103,947	242,820	133.60%	242,820	133.60%
CARGO CARRIERS								
FEDEX EXPRESS*	9,079,163	10,731,330	18.20%	99,573,753	103,544,331	3.99%	103,544,331	3.99%
GEM AIR	12,866	21,282	65.41%	261,870	261,130	-0.28%	261,130	-0.28%
SOUTHERN AIR	192,976	-	-100.00%	2,892,533	1,688,688	-41.62%	1,688,688	-41.62%
UPS	9,380,464	9,396,579	0.17%	79,713,386	88,280,286	10.75%	88,280,286	10.75%
MISC CARGO	374,825	675,663	80.26%	4,748,203	5,209,756	9.72%	5,209,756	9.72%
ABX AIR	-	-	0.00%	5,745	-	-100.00%	-	-100.00%
TOTAL DEPLANED CARGO	20,523,076	21,860,335	6.52%	205,268,056	209,288,765	1.96%	209,288,765	1.96%
TOTAL CARGO	41,294,998	45,617,822	10.47%	402,014,675	420,037,851	4.48%	420,037,851	4.48%

*FEDEX EXPRESS includes mail



Salt Lake City
Department of Airports

COMPARISON OF ON TIME OPERATIONS
November 2020

ARRIVALS

Airport	Flights	% On Time	Rank
MDW CHICAGO MIDWAY	4,565	94.8	1
MSP MINNEAPOLIS-ST. PAUL INTL	8,634	93.9	2
ATL HARTSFIELD-JACKSON ATLANTA INTL	22,272	93.8	3
ORD CHICAGO O HARE	15,472	93.4	4
DCA RONALD REAGAN NATIONAL	3,299	93.1	5
HNL HONOLULU	2,533	93.1	6
IAD WASHINGTON DULLES	4,337	93.0	7
SFO SAN FRANCISCO INTL	6,314	93.0	8
DTW DETROIT METRO WAYNE CNTY	9,394	92.7	9
BWI BALTIMORE/WASHINGTON INTL	5,393	92.6	10
LAS LAS VEGAS MCCARRAN INTL	9,207	92.4	11
LGA NEW YORK LAGUARDIA	3,658	92.4	12
MCO ORLANDO INTL	8,210	92.4	13
BOS BOSTON LOGAN INTL	4,768	92.3	14
CLT CHARLOTTE DOUGLAS	14,405	92.3	15
IAH HOUSTON GEORGE BUSH	8,604	92.2	16
DEN DENVER INTL	18,020	92.1	17
PHX PHOENIX SKY HARBOR INTL	10,136	91.7	18
LAX LOS ANGELES INTL	9,678	91.6	19
JFK NEW YORK JFK INTL	3,647	91.4	20
PHL PHILADELPHIA INTL	6,396	91.4	21
SAN SAN DIEGO LINDBERGH FIELD	3,987	91.1	22
EWR NEWARK LIBERTY INTERNATIONAL	5,992	90.8	23
SEA SEATTLE-TACOMA INTL	11,493	90.5	24
MIA MIAMI INTL	4,503	90.4	25
PDX PORTLAND INTL	4,124	90.4	26
SLC SALT LAKE CITY INTL	8,463	90.3	27
TPA TAMPA INTL	4,485	89.9	28
FLL FT. LAUDERDALE	5,427	89.6	29
DFW DALLAS-FT. WORTH REGIONAL	18,880	88.1	30
AVERAGES	8,210	91.9	

DEPARTURES

Airport	Flights	% On Time	Rank
DCA RONALD REAGAN NATIONAL	2,983	95.5	1
SAN SAN DIEGO LINDBERGH FIELD	3,815	95.3	2
HNL HONOLULU	2,417	95.2	3
SFO SAN FRANCISCO INTL	6,102	95.2	4
PDX PORTLAND INTERNATIONAL	2,950	95.0	5
MSP MINNEAPOLIS-ST. PAUL INTL	8,655	94.8	6
CLT CHARLOTTE DOUGLAS	13,344	94.1	7
BOS BOSTON LOGAN INTERNATIONAL	4,778	94.0	8
LAS LAS VEGAS MCCARRAN INTL	9,171	93.9	9
MCO ORLANDO INTL	8,187	93.9	10
PHL PHILADELPHIA INTL	5,487	93.9	11
IAD WASHINGTON DULLES	3,242	93.8	12
DTW DETROIT METRO WAYNE CNTY	9,338	93.5	13
LAX LOS ANGELES INTL	9,461	93.5	14
ORD CHICAGO O HARE	12,475	93.5	15
ATL HARTSFIELD-JACKSON ATLANTA INTL	22,343	93.4	16
PHX PHOENIX SKY HARBOR INTL	10,111	93.4	17
IAH HOUSTON GEORGE BUSH	7,517	93.3	18
SEA SEATTLE-TACOMA INTL	8,841	93.2	19
JFK NEW YORK JFK INTL	3,668	93.0	20
LGA NEW YORK LAGUARDIA	3,656	93.0	21
MDW CHICAGO MIDWAY	4,575	92.5	22
DEN DENVER INTERNATIONAL	18,020	92.4	23
MIA MIAMI INTL	4,511	92.0	24
SLC SALT LAKE CITY INTL	8,440	91.9	25
EWR NEWARK LIBERTY INTERNATIONAL	5,188	91.7	26
TPA TAMPA INTERNATIONAL	4,465	91.6	27
BWI BALTIMORE/WASHINGTON INTL	5,396	91.0	28
FLL FT. LAUDERDALE	5,423	90.7	29
DFW DALLAS-FT. WORTH REGIONAL	18,876	90.0	30
AVERAGES	7,781	93.3	

ON TIME ARRIVAL PERFORMANCE AT SLC

By Carrier

Air Carrier	Flights	% On Time
F9 FRONTIER	118	94.9%
UA UNITED	390	93.8%
WN SOUTHWEST	517	93.0%
AS ALASKA	186	91.9%
DL DELTA	6,857	90.1%
AA AMERICAN	336	84.8%
B6 JETBLUE	59	83.1%
AVERAGES	8,404	92.3%

Source: DOT Air Travel Consumer Report

DESIGN AND CONSTRUCTION REPORT

TABLE OF CONTENTS

- I. Area Map of Project Locations
- II. Project Schedule
- III. Construction Analysis
- IV. Design and Construction Report

SALT LAKE CITY DEPARTMENT OF AIRPORTS

February 10, 2021



Salt Lake City
International Airport

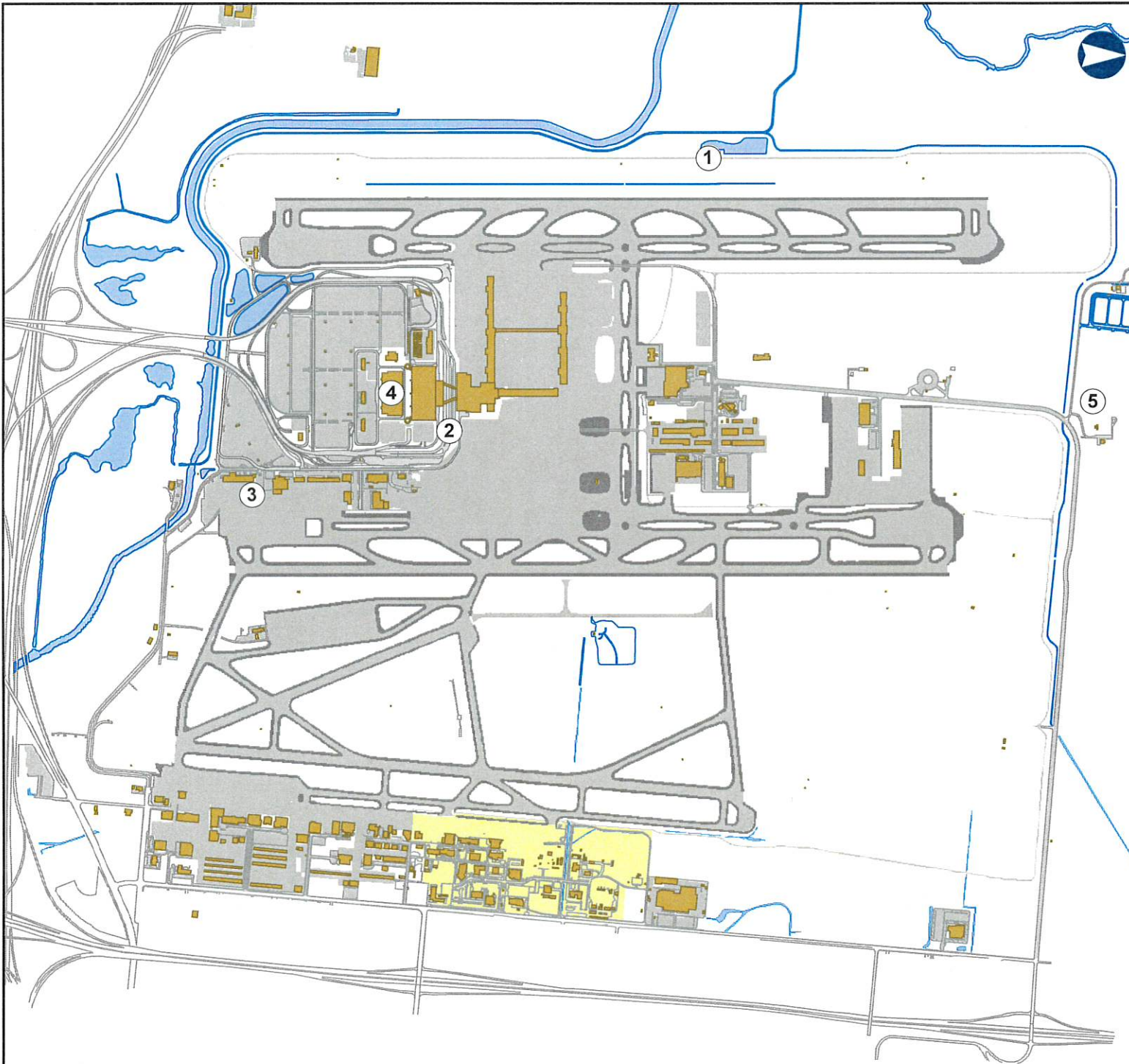
2020 - 2021 Project Legend

Airfield

1. Pump House No. 1 Reconstruction

Landside

2. Parking Lot E Pedestrian Canopy
3. Airport Operations Center Canopy
4. QTA Deck Coating
5. Glycol Plant & Wildlife Services Office Bldg.



SALT LAKE CITY INTERNATIONAL AIRPORT
CONSTRUCTION PROGRAM
2020/2021 Construction Schedule

ID	Task Name	Start	Finish	Oct '20	Nov '20	Dec '20	Jan '21	Feb '21	Mar '21	Apr '21	May '21
1	Project Title	Wed 2/5/20	Thu 4/29/21								
2	(1) Pump House No. 1 Reconstruction	Wed 2/5/20	Sat 11/14/20								
3	(2) Parking Lot E Pedestrian Canopy	Fri 6/12/20	Fri 1/29/21								
4	(3) Airport Operations Center Canopy	Fri 6/12/20	Mon 1/25/21								
5	(4) Quick Turn Around (QTA) Deck Coating	Thu 10/1/20	Fri 12/4/20								
6	(5) Glycol Plant & Wildlife Services Office Bldg.	Thu 9/17/20	Thu 4/29/21								

Project: Microsoft Project - 3-13-2 Date: Mon 2/8/21	DESIGN		Inactive Milestone		Manual Summary	
	CONSTRUCTION		Inactive Summary		Start-only	
	SCOPING		Manual Task		Finish-only	
	SUMMARY		Duration-only		Deadline	
	Inactive Task		Manual Summary Rollup			

**SALT LAKE CITY DEPARTMENT OF AIRPORTS
CONSTRUCTION PROJECT STATUS 2020 - 2021**

#	PROJECT NAME	ENGINEER'S ESTIMATE	BID AMOUNT	APPROVED CHANGE ORDERS TO DATE	% OF COST INCREASE TO DATE	STATUS	CONTRACTOR
CONSTRUCTION							
1	Pump House No. 1 Reconstruction	\$ 1,331,479	\$ 1,980,000	\$ 5,873	0.30%	behind schedule	Pine Tree Construction
2	Parking Lot E Pedestrian Canopy	\$ 1,054,886	\$ 1,304,933	\$ 40,343	3.09%	on schedule	Crescent Construction
3	Airport Operations Canopy	\$ 681,000	\$ 626,628	\$ 119,953	19.14%	complete	Crescent Construction
4	Quick Turn Around (QTA) Deck Coating	\$ 1,500,000	\$ 1,080,628	\$ 33,464	3.10%	behind schedule*	Paulsen Construction
5	Glycol Plant & Wildlife Services Office Bldg.	\$ 3,106,683	\$ 3,335,000			on schedule	Cal Wadsworth Construction
	Total	\$ 7,674,048	\$ 8,327,189	\$ 199,633	2.40%		
	* Awaiting structural repair information from consultants.						
	Budget amount, Engineer's estimate, and Bid amount is based on construction cost only.						

DESIGN AND CONSTRUCTION REPORT

CONSTRUCTION

- (1) **Pump House No. 1 Reconstruction** - Commissioning of the pumps has begun. A final walk through and punch list is anticipated to take place at the end of February 2021.
- (2) **Parking Lot E Pedestrian Canopy** - The glass screen walls have been installed. A final walk through has been completed. Final painting of the underside of the canopy will be delayed until the spring due to weather.
- (3) **Airport Operations Center Canopy** - The Contractor was issued substantial completion on January 25, 2021 for this project. All punch list items have been completed.
- (4) **Quick Turn Around (QTA) Deck Coating** - The structural consultant has determined that the structural repair work is more extensive than previously determined. SLCDA Engineering is awaiting pricing for the repairs. The structural beams have been shored to prevent any additional damage and the Contractor will continue repair work in spring of 2021.
- (5) **Glycol Plant and Wildlife Services Office Building** - The Contractor has completed approximately 60% of the project. All exterior walls have been framed and insulated, roofing is 95% completed and the interior framing is complete. The mezzanine concrete deck was poured last week. The Contractor is starting with the interior drywall and finish work this week.



Advisory Board
Meeting

February 17, 2021

Media Clippings

<https://slcairport.com/assets/pdfDocuments/AABoard/2FebruaryClippingPacket2021.pdf>

Compiled by the Communication & Marketing Dept.