



Advisory Board
Meeting

September 15, 2021

Agenda



Advisory Board Meeting

September 15, 2021

Web-Ex Information

Pursuant to City Code 2.14.060(A) and Utah Code section 52-4-207(2), the Airport Advisory Board adopted a rule permitting electronic meetings this Board, regardless of whether a quorum is present at an anchor location, so long as such meetings comply with the Open and Public Meetings Act.

To access the meeting electronically, please visit:

<https://saltlakecity.webex.com/saltlakecity/onstage/g.php?MTID=e1c5538b12d28a86dfef666287c3d7509>



ADVISORY BOARD MEETING AGENDA

15 September 2021

8:00 A.M.

CONSENT

- A. Minutes of the 16 June 2021 Meeting

DISCUSSION

- A. Director's Report – Bill Wyatt, Executive Director, SLCDA
- B. Airport Redevelopment Program (ARP) Update – Mike Williams, ARP Director, SLCDA
- C. Airport Revenue Bonds Update – Brian Butler, CFO, SLCDA

INFORMATION ITEMS

Air Traffic Statistics – July 2021
Construction Report – September 2021

MEDIA CLIPPINGS

Media Clippings – September 2021

The next meeting will be held on **Wednesday, October 20, 2021**, at 8:00 a.m. Meetings are usually held in the Board Room, located on the third level of the airport terminal and via Web-ex unless otherwise posted. People with disabilities may make requests for reasonable accommodations no later than 48 hours in advance in order to attend this Airport Advisory Board Meeting. Accommodations may include alternate formats, interpreters, and other auxiliary aids. This is an accessible facility. For questions or additional information, please contact Tina Nee at 801-575-2042.



Advisory Board
Meeting

September 15, 2021

Minutes

SALT LAKE CITY DEPARTMENT OF AIRPORTS MINUTES OF ADVISORY BOARD MEETING

June 16, 2021

Members Present: Steve Price, Chair
Larry Pinnock
Cyndy Miller*
Arlyn Bradshaw*
Roger Boyer
Dirk Burton
Tye Hoffmann*

City Council Office: James Rogers*
Sam Owen*
Russell Weeks*

Mayor's Office: Rachel Otto*

Department of Airports: Bill Wyatt, Executive Director
Tina Nee, Administration
Brian Butler, Chief Financial Officer
Kevin Robins, Director of Engineering
Shane Andreasen, Director of Admin and Commercial Services
Brady Frederickson, Director of Planning and Environmental
Nancy Volmer, Director of Communication and Marketing
Nate Lavin, Air Service Development Manager
Treber Anderson, Director of Operations*
Ed Cherry, Director of IT*
Kristen Elder, Operations*
Pete Higgins, Chief Operations Officer
Mike Williams, ARP Program Director
Stefhan Bennett, SLPD Captain*
Rick Stratton, SLCFD Battalion Chief*
Catherine Brabson, City Attorney*
Megan DePaulis, City Attorney*

Other: Bob Bergman, Lobbyist
Jared Esselman, Utah Division of Aeronautics*
Shawn Milne, Tooele County*
John Holden, Executive Limo Solutions*
Kory Cox, HDR, Inc.
David Chipman*
Andy C*

Steve Price called the meeting, held in-person at the SLCDCA Admin Offices Board Room and via Web-Ex to order at 8:07 a.m. (* indicates the party attended virtually)

AGENDA

A. Minutes

A motion was made by Larry Pinnock and seconded by Dirk Burton to approve the minutes of May 19, 2021 as presented. All votes were affirmative; motion passed.

B. Director's Report

Bill Wyatt, Executive Director, updated the Airport Advisory Board regarding current events.

Bill Wyatt provided a brief update on passenger volumes, financial position, air service development, and construction.

Roger Boyer made a comment regarding the parking structure helixes. They appear to be poorly designed and too tight.

Cyndy Miller indicated she has heard of excessive lines at TSA.

Bill Wyatt responded the lines have been better due to an increase in labor, better staffing shifts, and better use of the positions. It is a work in progress and labor is an issue everywhere.

Steve Price asked where SLCIA ranks with national enplanements.

Bill Wyatt answered SLCIA is one of the busiest airports in the country due to the state's national parks and successful ski season.

Larry Pinnock inquired as to when the airport will be mask free?

Bill Wyatt indicated the current mask mandate by the TSA is in effect until September 15, 2021. There was a small adjustment yesterday to remove the mask requirement from outdoors. There should be another change soon.

C. Airport Redevelopment Program (ARP) Update – Mike Williams, ARP Director, SLCDA

Mike Williams, Airport Redevelopment Program (ARP) Director, presented an update on the ARP (presentation on file). Main points included were:

- Project statistics
- Safety and Schedule Stats, and Cost Summary
- Project statistics
- CGMP #5 – Terminal/South Concourse West/Gateway status
- CGMP #6 – Roadways/Parking Garage/Central Utility Plant status
- CGMP #7 – Baggage Handling System status
- CGMP #9A – SCW Apron Paving and Hydrant Fueling status
- CGMP #16 – NCP Phase 1

- CGMP #17 – NCP Baggage Handling System Phases 1 & 2 status
- CGMP #18 – NCP Apron Paving/ Hydrant Fueling
- Tracking Budget
- Job progress photos

Mayor Dirk Burton asked to the delay in the TRAX station build-out.

Mike Williams indicated there has been some coordination issues. They are currently meeting weekly and keeping a close eye on that part of the project.

D. Airport Revenue Bonds Update – Brian Butler, Chief Financial Officer, SLCDA

Roger Boyer expressed his surprise at the rate; it seems high. This appears to be a lot more interest than his company is paying on office buildings with terrible credit.

Larry Pinnock responded the yield curve is a little more steep than it has been historically. A year ago, it was quite flat. The rate will be even higher if the transaction goes out forty years.

Brian Butler added the Airport is not AAA rated like Salt Lake City Corporation. Bonds are issued between 10 – 30 years and each year has a different interest rate – the rate reported in the presentation is the average. In talking with the investment banks, several other airports have been pricing over the last few weeks and the all-in interest cost has been just north of 3%. There is hope it'll come in lower.

Steve Price asked if the 57 basis points was the transaction cushion.

Brian Butler indicated it is more like 25 basis points. This is a conservative estimate built into the model.

Further discussion was had regarding rating agencies and bond pricing.

E. Air Service Development Update – Nancy Volmer, Director of Communication and Marketing, SLCDA and Nate Lavin, Air Service Development Manager, SLCDA

Steve Price asked for clarification – new services like Eurowings Discover is due to the use of a City owned gate.

Bill Wyatt indicated yes. SLCIA would not want to lease a gate to an airline with only one service, or only five to six turns weekly. This allows the airport to accommodate more offerings.

Cyndy Miller indicated she has seen an increase to rental car rates.

Bill Wyatt stated while there is an increase, it is not massive. Everything is more expensive. Some rental car agencies are having to buy used cars. SLCIA is slightly better off due to our quick return to service.

Steve Price adjourned the meeting at 9:35 a.m.

J. Steven Price, Chair

Date

Erin Mendenhall, Mayor

Date



Advisory Board
Meeting

September 15, 2021

Discussion Items

AGENDA: DISCUSSION ITEM (A)
DATE: 15 September 2021
TO: Airport Advisory Board
FROM: Bill Wyatt, Executive Director
SUBJECT: **Executive Director's Report**

Bill Wyatt will present a monthly informational report to the Board, which may include:

1. ARP progress
2. Ground transportation update
3. Concessions and rental cars
4. Airport safety and security
5. Airport facilities and operations
6. General aviation
7. Passenger and airport users
8. Environmental matters
9. Financial condition
10. Legislative issues
11. Airlines
12. Communications and marketing

AGENDA: DISCUSSION ITEM (B)
DATE: 15 September 2021
TO: Airport Advisory Board
FROM: Bill Wyatt, Executive Director
SUBJECT: **Airport Redevelopment Program Update**

Mike Williams, Airport Redevelopment Program (ARP) Director, will present an update on the SLC Airport Redevelopment Program (presentation on file).



AIRPORT REDEVELOPMENT PROGRAM

Status Update 09/15/2021



Safety and Schedule



Safety Statistics

Numbers for the Current Month

- OSHA National Average**
 - Lost Time Rate 1.80 Recordable Rate 3.10**
- HDJV Metrics**
 - 8,744,118 Total Trade Hours worked**
 - Lost Time Rate 0.25 Recordable Rate 2.31**

Numbers for the Program Overall

- ARP Metrics (HDJV+AOJV)**
 - 10,905,152 Total Trade Hours worked**

Schedule Status - Critical Path

- Concourse 'A' Steel Erection and Metal Decking Installation**
- State of Concourse 'A' East Elevated Deck Concrete Placement**
- Overall Program is on schedule**

Near Term Schedule Milestones



Target Date	Current Date	Description
09/01/21	Started	Start Airfield Paving Taxiway G North
09/07/21	Started	Hardstands - Start Other Airlines Departures Bus Shelter Installation
09/16/21	09/16/21	Central Tunnel First Concrete Lid Placement
09/17/21	09/17/21	Concourse A East - Complete Slab-on-Grade Concrete Placement
09/17/21	09/17/21	Concourse A East - Level 2 Area 'A' Concrete on Metal Deck Placement
10/13/21	10/13/21	Concourse A East - Structural Steel Topping Out
10/16/21	10/16/21	Delta Community Credit Union Available for Move-In
10/26/21	10/26/21	Concourse A East - Start Exterior Curtainwall Installation
10/31/21	10/31/21	Concourse B Lower Level Hardstand Holdroom Operational
11/01/21	11/01/21	Terminal Level 1 Baggage Check-In Operational

Airport Redevelopment Program Overall Budget



Construction Budget September 2021	Budget 09/02/21 FOC	Committed Jul-21	Commitments Aug-21	*Pending Commitments	Revised Commitments	Earned to Date	Estimate at Completion
Closed TRP CGMPs 1, 2, 2A-2D, 3, 4, 9, 09A, 12	\$394,334,804	\$400,284,798	\$0	(\$5,949,994)	\$394,334,804	\$393,613,757	\$394,334,804
Closed NCP CGMPs 13, 14, 15, 16, 17, 18 & 19	\$487,882,444	\$487,852,444	\$0	\$0	\$487,852,444	\$487,852,444	\$487,882,444
CGMP 2E,F&H CMAR General Conditions/Services	\$108,829,066	\$50,309,279	\$0	\$0	\$50,309,279	\$14,357,883	\$108,829,066
CGMP 05 Terminal/SCW/Gateway	\$1,042,507,452	\$1,042,670,036	\$0	(\$162,584)	\$1,042,507,452	\$1,041,436,232	\$1,042,507,452
CGMP 06 Parking Garage, Roadways, CUP	\$403,477,666	\$405,856,439	\$0	(\$2,378,773)	\$403,477,666	\$400,133,184	\$403,477,666
CGMP 07 TRP Baggage Handling System	\$96,360,013	\$96,578,430	\$0	(\$218,417)	\$96,360,013	\$96,352,082	\$96,360,013
CGMP 10 South Concourse East/Tunnel Shell	\$543,319,572	\$472,308,235	\$71,011,337	\$0	\$543,319,572	\$148,623,401	\$543,319,572
CGMP 11 Apron Paving & Fueling SCE Ph 2	\$272,291,698	\$191,182,465	\$9,028,000	\$0	\$200,210,465	\$59,784,150	\$272,291,698
CGMP 19A Phase 3 NCP/Tunnel Buildout	\$347,386,114	\$0	\$58,900,309	\$0	\$58,900,309	\$0	\$347,386,114
CGMP 20 NCP Phase 2 Airfield	\$81,622,509	\$0	\$0	\$0	\$0	\$0	\$81,622,509
Total Program Construction	\$3,778,011,338	\$3,147,042,126	\$138,939,646	(\$8,709,768)	\$3,277,272,004	\$2,642,153,133	\$3,778,011,338
TRP Owner Procurement	\$5,465,472	\$5,215,472	\$0	\$0	\$5,215,472	\$4,808,421	\$5,465,472
NCP Owner Procurement	\$2,655,266	\$2,655,266	\$0	\$0	\$2,655,266	\$1,860,182	\$2,655,266
Security Checkpoint Equipment	\$12,751,472	\$11,751,472	\$0	\$0	\$11,751,472	\$7,848,061	\$12,751,472
Automated Security Exit Door Equipment	\$672,000	\$0	\$0	\$0	\$0	\$0	\$672,000
TRP Soft Cost	\$378,283,065	\$306,229,025	\$199,700	\$0	\$306,428,725	\$279,562,202	\$378,283,065
NCP Soft Cost	\$185,593,794	\$128,776,542	\$102,817	\$0	\$128,879,359	\$92,285,987	\$185,593,794
Total Program Soft Cost	\$585,421,069	\$454,627,777	\$302,517	\$0	\$454,930,294	\$386,364,853	\$585,421,069
CGMP 2G CMAR Preconstruction Phase 4	\$1,414,757	\$1,414,757	\$0	\$0	\$1,414,757	\$42,443	\$1,414,757
NCP Soft Cost Phase 4	\$2,064,866	\$1,636,186	\$428,680	\$0	\$2,064,866	\$0	\$2,064,866
Total Phase 4 Planning Cost	\$3,479,623	\$3,050,943	\$428,680	\$0	\$3,479,623	\$42,443	\$3,479,623
TRP Owner Reserve	\$39,827,637	\$0	\$0	\$0	\$0	\$0	\$39,827,637
NCP Owner Reserve	\$45,233,395	\$0	\$0	\$0	\$0	\$0	\$45,233,395
Total Program Owner Reserve	\$85,061,032	\$0	\$0	\$0	\$0	\$0	\$85,061,032
Total ARP Program Budget	\$4,451,973,062	\$3,604,720,846	\$139,670,843	(\$8,709,768)	\$3,735,681,921	\$3,028,560,430	\$4,451,973,062

Concourse 'A' East/ Central Tunnel/Airfield



Central Tunnel Concrete Structure

- **Pile Driving at North End – 100% Complete**
- **Mud-Slab Concrete Placement and Waterproofing continuing**
- **Concrete Mat (Bottom) Slab Concrete Placement continuing**
- **Terminal Concrete Wall Removal at Tunnel Complete**
- **Continuing Scaffolding Assembly for Lid (Top) Concrete Placement**

Concourse 'A' East

- **Continuing Slab-on-Grade Concrete Pours**
- **Structural Steel Erection progressing with Two Cranes**
- **Metal Deck for Elevated Concrete Slab underway**
- **Mechanical, Electrical and Plumbing Rough-in for First Elevated Concrete Deck Pour Underway**

Concourse 'A' East/ Central Tunnel/Airfield



Airfield

- **Site Utilities Progressing**
- **Hydrant Fuel System Pipe and Fuel Vault Installation Progressing**
- **Airfield Paving at East Side of Construction Site continuing**
- **Preparation for Apron Lean Concrete Paving on South Side of Concourse 'A' East underway**

Concourse 'B' Hardstand Expansion



Ramps

- **Fabrication and Delivery Complete for all Bus Shelters and Ramps**
- **Installation of new Bus Shelters and Ramps underway and On Schedule**

Lower Level Holdroom

- **Completed Wall Paint**
- **Ceiling Grid Installation Complete**
- **Started Raised Floor Installation**

Boarding Level Holdroom

- **Construction of Platform/Ramps at East Moving Walk Complete**
- **Completed Installation of Delta 'Need Help' Counter on Raised Platform**

Early Bag Storage/Phase 3/Phase 4



Early Bag Storage (EBS)

- **Received, Negotiated and Accepted Vanderlande Firm Price Proposal**
- **Exterior Electrical Yard Equipment Procurement underway**
- **Received Overall Updated Building and BHS Estimate – No Change in Budget**
- **Design of Building Modifications and EBS Baggage Handling System underway**

Phase 3 (Concourse 'B' East 8 Gate) Procurement

- **Conducted Pre-Bid Meeting**
- **Bids due September 2021**

Phase 4 (Concourse 'B' East 16 Gate) Design

- **Program Validation/Design Work Sessions underway**
- **Reviewed Initial Checkpoint Simulation Results – No Capacity Challenges**
- **Program Validation Draft Report issued**
- **Program Validation Final Report week of 10/11/2021**

Concourse 'A' East Aerial



Concourse 'A' East Concrete



Area 'D' Slab-on-Grade Concrete Placement



Area 'D' Slab-on-Grade Finished Concrete



Area 'C' Drive-thru Epoxy Coated Rebar

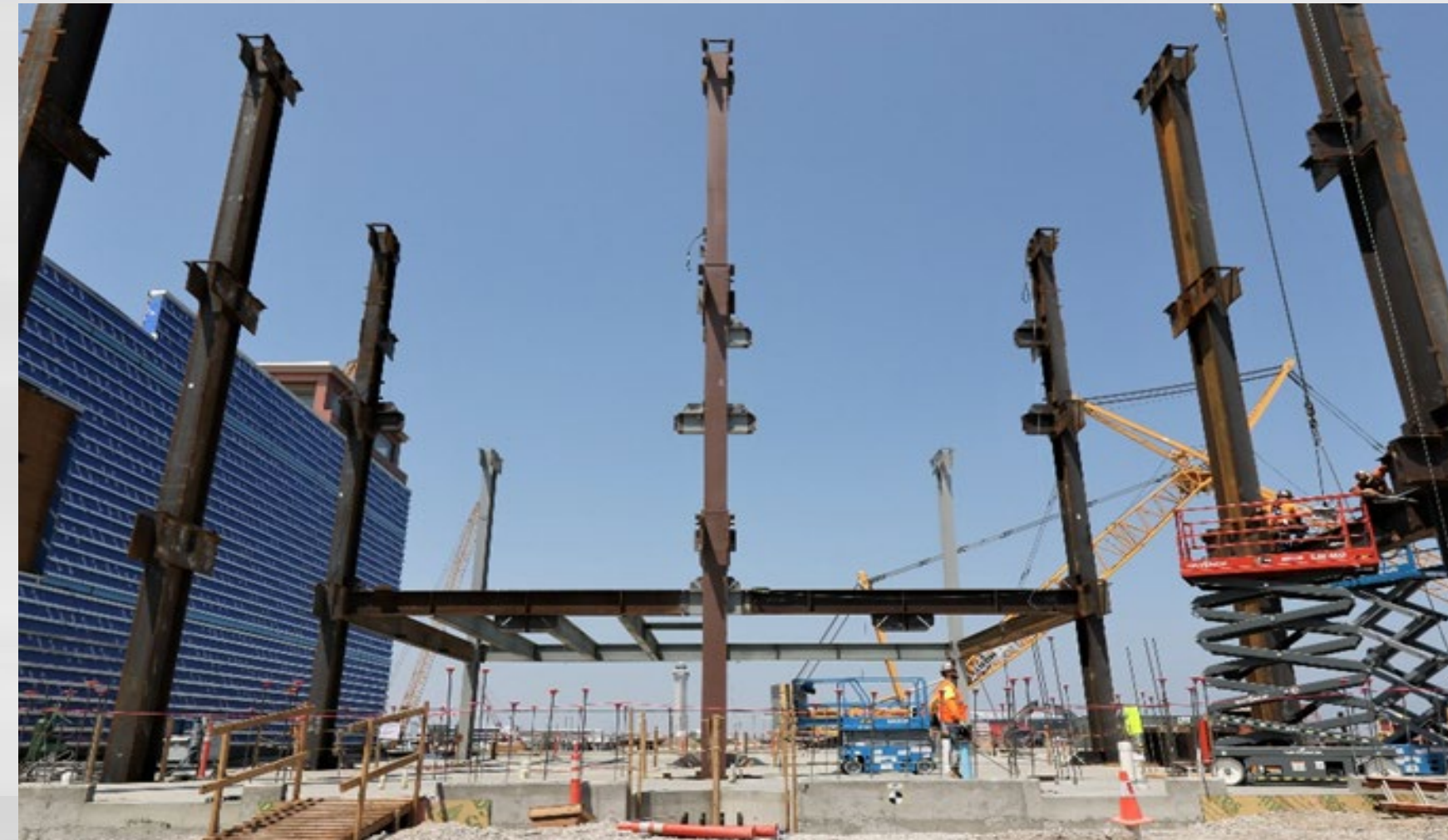


Area 'C' Drive-thru Concrete Finishing

Concourse 'A' East Steel Erection



August 2 – Day One Steel Erection



August 3 – Day Two Steel Erection



August 12 – Steel Erection Progress

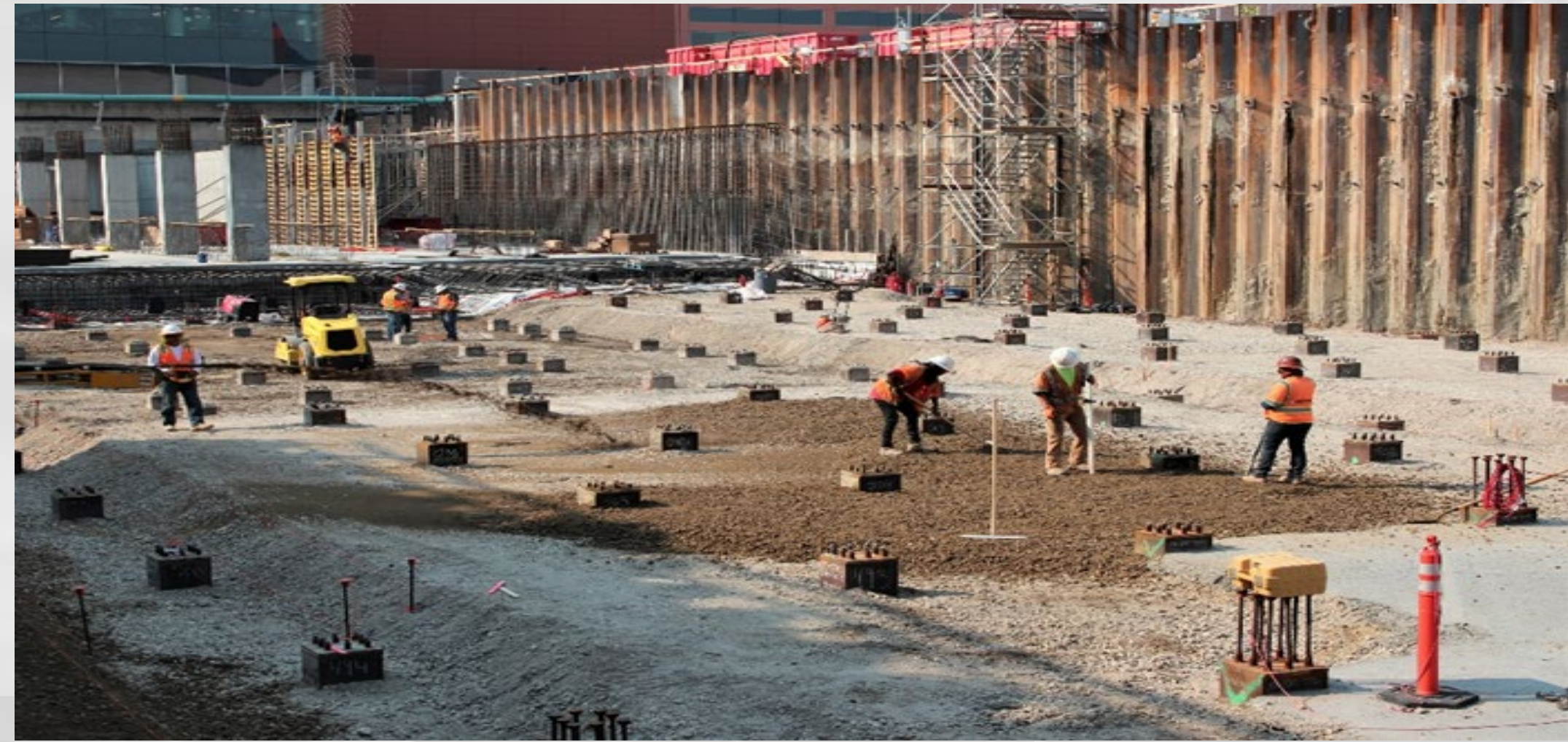


August 27 – Steel Erection Progress

Central Tunnel South End



Temporary Fuel Line Area – Final Pile Driving



Temporary Fuel Line Area – Final Grading



Column and Wall Formwork



Terminal Basement Concrete Wall Removal

Central Tunnel North End



Mud Slab and Waterproofing



Wall and Lid Formwork



Mat Slab Formwork



Concourse 'B' Node Basement Pile Driving

Concourse 'B' Hardstand Level 1 and 2 Holdrooms



Level 2 – Opening to South Ramp



Exterior Ramp Installation



Level 1 Air Handling Equipment



Level 1 Ceiling Grid and Wall Finishing

Airfield Construction



Fuel Vault



Fuel Line and Fuel Hydrant



Airfield East (Near Runway) Paving Prep



Grading and Base

AGENDA: DISCUSSION ITEM (C)
DATE: 15 September 2021
TO: Airport Advisory Board
FROM: Bill Wyatt, Executive Director
SUBJECT: **Airport Revenue Bonds Update**

Brian Butler, Airport Chief Finance Officer, will present an update on the Airport's Revenue Bonds (presentation on file).



AIRPORT REVENUE BONDS SERIES 2021A AND 2021B
AIRPORT ADVISORY BOARD

9/15/2021



Airport Sector Update

\$904,570,000 Salt Lake City Airport Revenue Bonds, Series 2021A/B



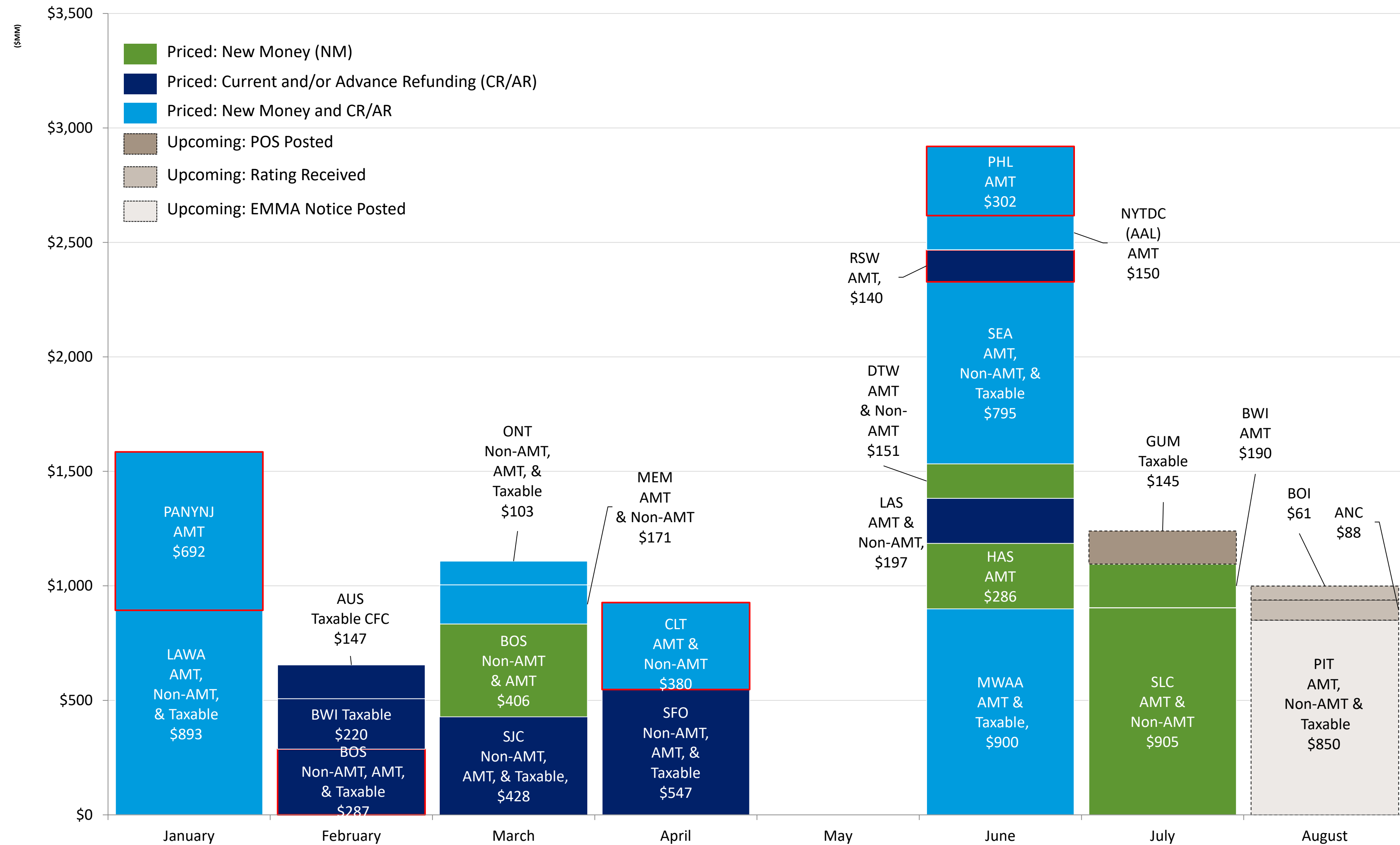
Pricing Date:	July 22, 2021				
Issuer:	Salt Lake City, Utah (the "City")				
Issue:	\$776,925,000 Airport Revenue Bonds, Series 2021A (AMT) \$127,645,000 Airport Revenue Bonds, Series 2021B (Non-AMT)				
Ratings:	Moody's: A2 (Stable Outlook); S&P: A (Stable Outlook); Kroll: AA- (Stable Outlook)				
Purpose:	(i) Finance a portion of the cost of the design and construction of the New SLC; (ii) Repay subordinate obligations related to interim construction financing				
Structure:	Series	Maturities	Coupon	Credit Spread	Yield
	2021A	2022 – 2051	5.00%	MMD + (10 - 54) bps	0.16% - 1.90%
	2021A	2038 – 2051	4.00%	MMD + (65 - 69) bps	1.72% - 2.05%
	2021B	2022 – 2051	5.00%	MMD + (6 - 30) bps	0.15% - 1.66%
	2021B	2037 – 2041	4.00%	MMD + 45 bps	1.49% - 1.61%
Call Feature:	July 1, 2031 @ Par				
AMT Premium:	2-24 basis points				
Disclosure:	https://www.munios.com/munios-notice.aspx?e=Y6TGA				
BofA Role:	Co-manager				



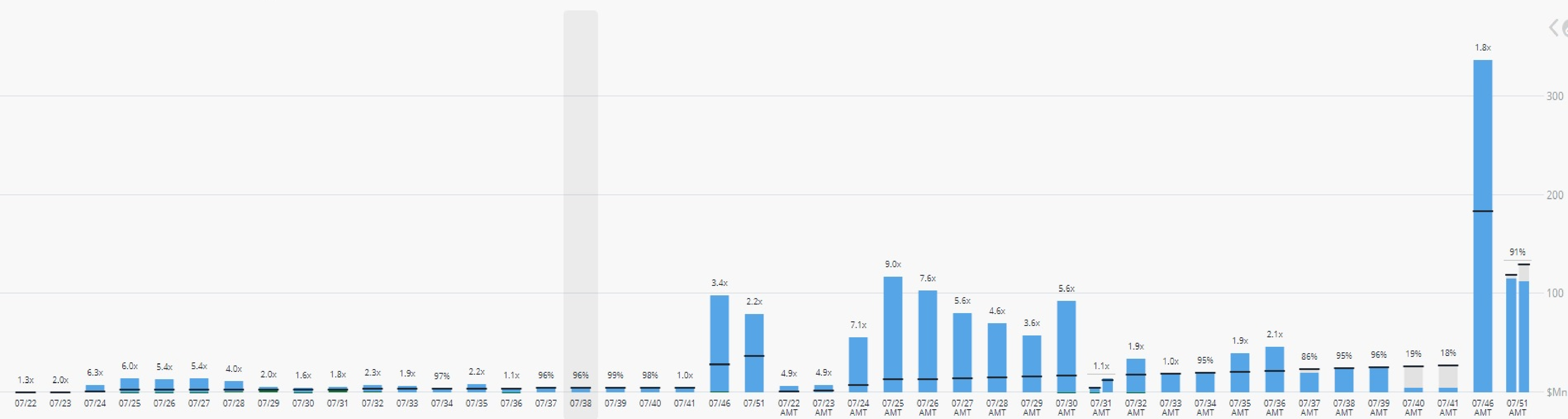
- On July 22, Salt Lake City, Utah sold \$904,570,000 Airport Revenue Bonds, Series 2021A/B
- Proceeds of the Bonds were used to finance a portion of the cost of the design and construction of the New SLC and to repay subordinate obligations related to interim construction financing for the City's Department of Airports (the "Department") at Salt Lake City International Airport (the "Airport")
- The Series 2021A/B Bonds represents the third tranche of long-term fixed rate bonds issued by the City to finance the New SLC
 - The City had previously issued \$1 billion Series 2017A/B Bonds and \$851 million Series 2018A/B Bonds to finance the New SLC
- Moody's, S&P, and Kroll all affirmed its rating of the City's credit at A2, A, and AA-, respectively
- The Department had previously planned to price the transaction the week of July 26th but chose to accelerate the pricing to July 22nd
- Both series of bonds were originally offered as all 5.00% coupons; for the repricing, several of the maturities were either bifurcated or changed to 4.00% coupons
- Following the issuance of the Series 2021A/B issuance, the Department currently expects to issue approximately \$610 million additional bonds in 2023 to fund additional costs of the New SLC

Airport Sector Update

2021 Capital Markets Airport Calendar



■ UT Retail <1%
 ■ Institutional 99%
 ■ Stock 0%
 [Show All](#)



Recent Orders View All (224) >

INVESCO Management & Research Inc. <small>Citigroup Global</small>	37,000 [▲] <small>A AMT: 07/01/2051, 4.000%</small>
Vanguard Funds <small>Citigroup Global</small>	16,750 <small>A AMT: 07/01/2038, 4.000%</small>
Vanguard Funds <small>Citigroup Global</small>	24,415 <small>A AMT: 07/01/2039, 4.000%</small>
Bessemer Trust Company N.A. <small>Citigroup Global</small>	12,000 <small>A AMT: 07/01/2032, 5.000%</small>
Bessemer Trust Company N.A. <small>Citigroup Global</small>	12,000 <small>A AMT: 07/01/2030, 5.000%</small>
Bessemer Trust Company N.A. <small>Citigroup Global</small>	10,000 <small>A AMT: 07/01/2031, 5.000%</small>
Bessemer Trust Company N.A. <small>Citigroup Global</small>	10,000 <small>A AMT: 07/01/2036, 5.000%</small>

Summary View Order Monitor >

\$1,721,275 (1.9x)
TOTAL ORDERS (M)

\$832,360 **\$72,210**
FILL (M) BALANCE (M)

92%

100%
 81%
 96%

SHORT (0-10 YR) FILL MID (11-20 YR) FILL LONG (21-30+ YR) FILL

Top Managers Top Accounts Reports

Mackay Shields	264,940
Bessemer Trust Company N.A.	107,690
Invesco Advisors	103,685
Mizuho Securities USA LLC	101,615
Fidelity Management & Research	96,410
TRowe Price	91,845
Capital Research	91,380
Alliance Bernstein	87,075
Eaton Vance	75,915
Vanguard Funds	67,985



Sources and uses of funds for the Series 2021 Bonds

Sources of Funds	
Bond Par Amount	\$904,570,000
Original Issue Premium	237,147,356
Total Sources of Funds	\$1,141,717,356

Uses of Funds	
Project Fund Deposit	\$707,002,618
Line of Credit Payoff	267,600,000
Capitalized Interest	98,564,044
Debt Service Reserve Fund	65,197,000
Issuance Costs	3,353,694
Total Uses of Funds	\$1,141,717,356



Advisory Board
Meeting

September 15, 2021

Information



**SALT LAKE CITY INTERNATIONAL AIRPORT
AIR TRAFFIC STATISTICS AND ACTIVITY REPORT
SEVEN MONTHS ENDED JULY 2021**

	July 2021	CHANGE	YTD 2021	CHANGE	12 MO ROLLING Ending 07/2021	CHANGE
PASSENGERS						
<i>DOMESTIC</i>						
Enplaned - Local	758,691	177.47%	3,786,594	54.89%	5,356,177	-7.64%
Enplaned - Connections	477,046	189.40%	2,138,959	69.96%	3,151,645	-9.84%
Less International	-29,143		-151,585		-200,624	
Enplaned	1,206,594	178.42%	5,773,968	60.73%	8,307,198	-7.31%
Deplaned - Local	768,591	182.71%	3,803,742	55.59%	5,361,429	-7.68%
Deplaned - Connection	477,046	189.40%	2,138,959	69.96%	3,151,645	-9.84%
Less International	-29,214		-154,907		-200,252	
Deplaned	1,216,423	181.55%	5,787,794	61.80%	8,312,822	-7.11%
TOTAL DOMESTIC	2,423,017	179.98%	11,561,762	61.27%	16,620,020	-7.21%
<i>INTERNATIONAL</i>						
Enplaned	29,143	494.88%	151,585	36.63%	200,624	-39.62%
Deplaned	29,214	526.78%	154,907	22.86%	200,252	-43.45%
TOTAL INTERNATIONAL	58,357	510.43%	306,492	29.31%	400,876	-41.60%
TOTAL PASSENGERS	2,481,374	183.59%	11,868,254	60.24%	17,020,896	-8.48%
LANDED WEIGHT						
Air Carriers	1,415,192,572	65.38%	8,309,299,902	44.12%	13,190,929,477	11.17%
Cargo Carriers	105,462,864	-3.84%	743,031,358	2.26%	1,352,561,867	7.19%
TOTAL LANDED WEIGHT (LBS)	1,520,655,436	57.52%	9,052,331,260	39.43%	14,543,491,344	10.78%
MAIL						
Enplaned	3,270,962	-5.28%	19,778,456	8.28%	35,058,745	20.23%
Deplaned	1,525,883	-29.87%	9,512,180	-4.15%	19,838,680	22.15%
TOTAL MAIL (LBS)	4,796,845	-14.79%	29,290,636	3.90%	54,897,425	20.92%
CARGO						
Enplaned	17,010,018	-2.87%	120,675,840	3.88%	215,260,427	7.84%
Deplaned	16,796,206	-9.46%	114,277,071	-1.96%	207,003,059	1.07%
TOTAL CARGO (LBS)	33,806,224	-6.26%	234,952,911	0.96%	422,263,486	4.41%
MAIL & CARGO						
Enplaned	8,505	-2.87%	60,338	3.88%	107,630	7.84%
Deplaned	8,398	-9.47%	57,139	-1.96%	103,502	1.07%
TOTAL MAIL & CARGO (TONS)	16,903	-6.26%	117,477	0.96%	211,132	4.41%
AIRCRAFT OPERATIONS						
Passenger Aircraft	24,426	59.23%	142,638	40.32%	228,894	9.64%
All-Cargo Aircraft	1,688	-2.20%	11,848	-0.60%	20,634	-0.11%
General Aviation	5,789	-4.65%	40,329	8.19%	68,187	7.66%
Military	148	-55.42%	1,668	1.34%	3,006	7.70%
TOTAL AIRCRAFT OPERATIONS	32,051	36.57%	196,483	28.85%	320,721	8.52%

**SALT LAKE CITY INTERNATIONAL AIRPORT
PASSENGER TRAFFIC REPORT
SEVEN MONTHS ENDED JULY 2021**

	July 2020	July 2021	% CHANGE	YTD 2020	YTD 2021	% CHANGE	12 MO ROLLING Ending 07/2021	% CHANGE
ENPLANED PASSENGERS								
AEROMEXICO	-	-	0.0%	11,436	-	-100.0%	-	-100.0%
ALASKA	113	16,953	14902.7%	42,769	50,086	17.1%	55,526	-45.7%
Horizon Air / Alaska	-	-	0.0%	2,018	17,507	767.5%	27,355	179.7%
Skywest / Alaska	9,326	16,703	79.1%	48,025	91,663	90.9%	122,962	7.5%
AMERICAN	29,756	64,423	116.5%	205,708	312,001	51.7%	448,635	1.0%
Compass	-	-	0.0%	6,563	-	-100.0%	-	-100.0%
Envoy Air	-	4,812	100.0%	-	11,061	100.0%	11,794	100.0%
American/Mesa Air	-	2,089	100.0%	-	7,152	100.0%	8,073	97.6%
Republic	-	-	0.0%	-	3,152	100.0%	3,968	100.0%
SkyWest (American)	3,098	6,389	106.2%	28,392	58,961	107.7%	92,596	51.7%
DELTA	219,296	677,671	209.0%	1,975,148	3,223,002	63.2%	4,630,485	-9.4%
SkyWest (Delta Connection)	89,703	210,801	135.0%	633,635	1,032,048	62.9%	1,541,120	1.8%
Compass (Delta Connection)	-	-	0.0%	-	-	0.0%	-	-100.0%
FRONTIER	11,346	26,140	130.4%	72,236	136,296	88.7%	209,098	15.6%
JETBLUE	7,798	26,959	245.7%	91,202	107,191	17.5%	132,586	-46.3%
KLM ROYAL DUTCH AIRLINES	-	-	0.0%	-	-	0.0%	-	-100.0%
SOUTHWEST	54,646	126,148	130.8%	399,961	600,276	50.1%	829,620	-9.4%
UNITED	1	21,492	2149100.0%	90,032	106,853	18.7%	150,686	-8.1%
GoJet Airlines	-	-	0.0%	-	-	0.0%	-	-100.0%
Express Jet	-	-	0.0%	600	-	-100.0%	-	-100.0%
Mesa Airlines (United Express)	1,448	3,492	141.2%	5,273	3,836	-27.3%	4,310	-77.2%
Republic Airways (United)	-	-	0.0%	1,953	3,114	59.4%	3,703	-84.8%
SkyWest (United Express)	11,736	31,665	169.8%	88,040	161,220	83.1%	235,108	8.0%
Trans States	-	-	0.0%	-	-	0.0%	-	0.0%
Charters	1	-	-100.0%	192	134	-30.2%	197	-69.1%
West Coast Charters	-	0	0.0%	-	0	0.0%	0	0.0%
TOTAL ENPLANED PASSENGERS	438,268	1,235,737	182.0%	3,703,183	5,925,553	60.0%	8,507,822	-8.5%
AeroMexico	-	-	0.0%	11,393	-	-100.0%	-	-100.0%
ALASKA AIR	121	16,288	13361.2%	41,504	49,474	19.2%	54,544	-45.8%
Horizon Air / Alaska	-	-	0.0%	2,039	17,263	746.6%	27,239	173.1%
Skywest / Alaska	9,135	32,340	254.0%	50,119	107,216	113.9%	139,806	19.2%
AMERICAN	29,252	64,373	120.1%	202,061	315,165	56.0%	448,097	1.3%
Compass	-	-	0.0%	6,494	-	-100.0%	-	-100.0%
Envoy Air (American)	-	5,075	100.0%	-	11,381	100.0%	12,103	100.0%
Mesa Air	-	2,044	100.0%	-	7,475	100.0%	8,472	136.8%
Republic	-	-	0.0%	-	2,951	100.0%	3,717	100.0%
SkyWest (American)	3,239	6,343	95.8%	29,457	59,014	100.3%	92,459	45.1%
DELTA	219,543	674,162	207.1%	1,987,763	3,213,392	61.7%	4,615,137	-10.2%
SkyWest (Delta Connection)	88,593	210,499	137.6%	627,119	1,032,877	64.7%	1,543,974	2.2%
Compass (Delta Connection)	-	-	0.0%	-	-	0.0%	-	-100.0%
FRONTIER	11,215	26,521	136.5%	73,775	137,784	86.8%	210,907	15.6%
JETBLUE	7,393	26,481	258.2%	93,028	105,926	13.9%	131,872	-46.5%
KLM ROYAL DUTCH AIRLINES	-	-	0.0%	-	-	0.0%	-	-100.0%
SOUTHWEST	54,401	124,114	128.1%	393,249	597,953	52.1%	824,086	-8.2%
UNITED	-	22,181	100.0%	89,859	109,451	21.8%	150,759	-5.9%
GoJet Airlines	-	-	0.0%	-	-	0.0%	-	-100.0%
Express Jet	-	-	0.0%	582	-	-100.0%	-	-100.0%
Mesa Airlines / United Express	1,566	3,986	154.5%	5,221	4,555	-12.8%	5,044	-72.5%
Republic Airways (United)	-	-	0.0%	2,037	3,051	49.8%	3,816	-84.8%
SkyWest (United Express)	12,248	31,230	155.0%	87,312	167,513	91.9%	240,780	11.4%
Trans States	-	-	0.0%	-	-	0.0%	-	0.0%
Charters	1	-	-100.0%	189	260	37.6%	262	-61.8%
West Coast Charters	-	-	0.0%	-	-	0.0%	-	0.0%
TOTAL DEPLANED PASSENGERS	436,707	1,245,637	185.2%	3,703,201	5,942,701	60.5%	8,513,074	-8.5%
TOTAL PASSENGERS*	874,975	2,481,374	183.6%	7,406,384	11,868,254	60.2%	17,020,896	-8.5%
INTERNATIONAL - ENPLANED								
AEROMEXICO	-	-	0.0%	11,436	-	-100.0%	-	-100.0%
DELTA	4,899	29,141	494.8%	93,689	151,583	61.8%	200,622	-21.8%
SkyWest (Delta Connection)	-	-	0.0%	5,736	-	-100.0%	-	-100.0%
Compass	-	-	0.0%	-	-	0.0%	-	-100.0%
KLM ROYAL DUTCH AIRLINES	-	-	0.0%	-	-	0.0%	-	-100.0%
Charters	-	-	0.0%	82	-	-100.0%	-	-100.0%
TOTAL ENPLANED INTERNATIONAL	4,899	29,141	494.8%	110,943	151,583	36.6%	200,622	-39.6%
AEROMEXICO	-	-	0.0%	11,393	-	-100.0%	-	-100.0%
DELTA	4,661	29,212	526.7%	105,400	154,905	47.0%	200,250	-24.5%
SkyWest (Delta Connection)	-	-	0.0%	9,289	-	-100.0%	-	-100.0%
Compass	-	-	0.0%	-	-	0.0%	-	-100.0%
KLM ROYAL DUTCH AIRLINES	-	-	0.0%	-	-	0.0%	-	-100.0%
Charters	-	-	0.0%	-	-	0.0%	-	0.0%
TOTAL DEPLANED INTERNATIONAL	4,661	29,212	526.7%	126,082	154,905	22.9%	200,250	-43.5%
TOTAL INTERNATIONAL PASSENGERS	9,560	58,353	510.4%	237,025	306,488	29.3%	400,872	-41.6%

*Includes International

**SALT LAKE CITY INTERNATIONAL AIRPORT
SEVEN MONTHS ENDED JULY 2021
Based on Total Enplanements**

MARKET SHARE

	July 2020	MARKET SHARE	July 2021	MARKET SHARE	YTD 2020	MARKET SHARE	YTD 2021	MARKET SHARE	12 MO ROLLING Ending 07/2020	12 MO ROLLING Ending 07/2021	MARKET SHARE
AEROMEXICO	-	0.00%	-	0.00%	11,436	0.31%	-	0.00%	31,835	-	0.00%
ALASKA	9,439	2.15%	33,656	2.72%	92,812	2.51%	159,256	2.69%	226,557	205,843	2.42%
AMERICAN	32,854	7.50%	77,713	6.29%	240,663	6.50%	392,327	6.62%	526,287	565,066	6.64%
DELTA	308,999	70.50%	888,472	71.90%	2,608,783	70.45%	4,255,050	71.81%	6,722,570	6,171,605	72.54%
FRONTIER	11,346	2.59%	26,140	2.12%	72,236	1.95%	136,296	2.30%	180,874	209,098	2.46%
JETBLUE	7,798	1.78%	26,959	2.18%	91,202	2.46%	107,191	1.81%	247,097	132,586	1.56%
KLM ROYAL DUTCH	-	0.00%	-	0.00%	-	0.00%	-	0.00%	8,676	-	0.00%
SOUTHWEST	54,646	12.47%	126,148	10.21%	399,961	10.80%	600,276	10.13%	915,369	829,620	9.75%
UNITED	13,185	3.01%	56,649	4.58%	185,898	5.02%	275,023	4.64%	435,031	393,807	4.63%
Charters	1	0.00%	-	0.00%	192	0.01%	134	0.00%	637	197	0.00%
TOTAL ENPLANEMENTS	438,268	100%	1,235,737	100%	3,703,183	100%	5,925,553	100%	9,294,933	8,507,822	100%

PERCENT CHANGE YOY

	July 2020	July 2021	PERCENT CHANGE	YTD 2020	YTD 2021	PERCENT CHANGE	12 MO ROLLING Ending 07/2020	12 MO ROLLING Ending 07/2021	PERCENT CHANGE
AEROMEXICO	-	-	100.00%	11,436	-	100.00%	31,835	-	-100.00%
ALASKA	9,439	33,656	256.56%	92,812	159,256	71.59%	226,557	205,843	-9.14%
AMERICAN	32,854	77,713	136.54%	240,663	392,327	63.02%	526,287	565,066	7.37%
DELTA	308,999	888,472	187.53%	2,608,783	4,255,050	63.10%	6,722,570	6,171,605	-8.20%
FRONTIER	11,346	26,140	130.39%	72,236	136,296	88.68%	180,874	209,098	15.60%
JETBLUE	7,798	26,959	245.72%	91,202	107,191	17.53%	247,097	132,586	-46.34%
KLM ROYAL DUTCH	-	-	0.00%	-	-	0.00%	8,676	-	-100.00%
SOUTHWEST	54,646	126,148	130.85%	399,961	600,276	50.08%	915,369	829,620	-9.37%
UNITED	13,185	56,649	329.65%	185,898	275,023	47.94%	435,031	393,807	-9.48%
Charters	1	-	-100.00%	192	134	-30.21%	637	197	-69.07%
TOTAL ENPLANEMENTS	438,268	1,235,737	182.0%	3,703,183	5,925,553	60.0%	9,294,933	8,507,822	-8.5%

**SALT LAKE CITY INTERNATIONAL AIRPORT
LANDING ACTIVITY
SEVEN MONTHS ENDED JULY 2021**

	July 2020	July 2021	CHANGE	YTD 2020	YTD 2021	CHANGE	12 MO ROLLING Ending 07/2021	% CHANGE
TOTAL NUMBER OF LANDINGS								
SCHEDULED CARRIERS								
AEROMEXICO	-	-	0.0%	109	-	-100.0%	-	-100.0%
ALASKA	1	120	11900.0%	393	391	-0.5%	462	-44.1%
Horizon Air / Alaska	-	-	0.0%	48	342	612.5%	550	239.5%
Skywest / Alaska	204	507	148.5%	1,069	1,905	78.2%	2,697	29.2%
AMERICAN	227	413	81.9%	1,684	2,161	28.3%	3,188	-5.4%
Compass	-	-	0.0%	102	-	-100.0%	-	-100.0%
American/Mesa Air	-	29	100.0%	-	103	100.0%	119	116.4%
Envoy Air (American)	-	74	100.0%	1	169	16800.0%	182	9000.0%
Republic/ (American)	-	-	0.0%	-	8	100.0%	20	100.0%
SkyWest (American)	64	122	90.6%	626	1,120	78.9%	1,763	48.2%
DELTA	3,004	4,626	54.0%	20,099	28,440	41.5%	46,670	10.7%
SkyWest (Delta Connection)	2,791	3,972	42.3%	16,755	23,955	43.0%	39,899	22.8%
Compass (Delta Connection)	-	-	0.0%	1	-	-100.0%	-	-100.0%
FRONTIER	86	191	122.1%	558	985	76.5%	1,534	26.3%
JETBLUE	118	193	63.6%	895	911	1.8%	1,245	-39.4%
KLM ROYAL DUTCH AIRLINES	-	-	0.0%	-	-	0.0%	-	-100.0%
SOUTHWEST	685	1,000	46.0%	4,458	4,983	11.8%	7,519	-13.5%
UNITED	-	159	100.0%	798	957	19.9%	1,342	-1.5%
GoJet	-	-	0.0%	-	-	0.0%	-	-100.0%
Express Jet	-	-	0.0%	10	-	-100.0%	-	-100.0%
Mesa / United Express	26	58	123.1%	92	67	-27.2%	75	-73.1%
Republic Airways Holdings	-	-	0.0%	32	48	50.0%	60	-83.9%
SkyWest (United Express)	255	513	101.2%	1,794	2,954	64.7%	4,385	13.9%
Trans States	-	-	0.0%	-	-	0.0%	-	0.0%
SUBTOTAL SCHEDULED CARRIERS:	7,461	11,977	60.5%	49,524	69,499	40.3%	111,710	9.2%
CHARTER CARRIERS								
ALLEGiant AIR	-	-	0.0%	-	-	0.0%	-	-100.0%
BOMBARDIER BUSINESS JETS	50	59	18.0%	316	403	27.5%	599	29.4%
BOUTIQUE AIR	-	-	0.0%	-	-	0.0%	-	0.0%
DELTA PRIVATE JETS	-	-	0.0%	-	-	0.0%	-	0.0%
EXECUTIVE JET MANAGEMENT	-	-	0.0%	-	-	0.0%	-	0.0%
FLIGHT OPTIONS	-	-	0.0%	-	-	0.0%	-	0.0%
KALITTA CHARTERS	5	-	-100.0%	37	63	70.3%	91	37.9%
KEYLIME AIR	-	-	0.0%	2	4	100.0%	4	-50.0%
NETJETS	140	177	26.4%	855	1,322	54.6%	1,952	40.6%
SUNSET AVIATION	-	-	0.0%	-	-	0.0%	-	0.0%
SWIFT AIR	-	-	0.0%	-	-	0.0%	-	0.0%
VIRGIN AMERICA	-	-	0.0%	-	-	0.0%	-	0.0%
XOJET	19	-	-100.0%	123	89	-27.6%	179	-0.6%
OTHER CHARTER	-	-	0.0%	4	-	-100.0%	2	-71.4%
SUBTOTAL CHARTER CARRIERS:	214	236	10.3%	1,337	1,881	40.7%	2,827	33.8%
CARGO CARRIERS								
AERO CHARTER & TRANSPORT	-	-	0.0%	-	-	0.0%	-	0.0%
AIR TRANSPORT INTERNATIONAL	-	-	0.0%	-	-	0.0%	-	0.0%
ALPINE AVIATION	183	192	4.9%	1,226	1,225	-0.1%	2,055	-4.7%
AMERIFLIGHT	112	103	-8.0%	880	732	-16.8%	1,340	-20.9%
CORPORATE AIR (BILLINGS)	127	138	8.7%	873	966	10.7%	1,521	-0.4%
EMPIRE	19	19	0.0%	121	127	5.0%	196	4.8%
FEDERAL EXPRESS	164	140	-14.6%	1,072	1,053	-1.8%	1,899	4.8%
GEM AIR	52	52	0.0%	370	393	6.2%	737	10.3%
NORTHERN AIR CARGO	-	22	100.0%	-	60	100.0%	60	100.0%
SOUTHERN AIR	8	-	-100.0%	137	-	-100.0%	-	-100.0%
UPS	171	156	-8.8%	1,076	1,126	4.6%	2,098	17.2%
WESTERN AIR EXPRESS	21	22	4.8%	152	159	4.6%	294	74.0%
OTHER CARGO	1	-	-100.0%	17	22	29.4%	27	28.6%
SUBTOTAL CARGO CARRIERS:	858	844	-1.6%	5,924	5,863	-1.0%	10,227	-0.4%
TOTAL LANDINGS	8,533	13,057	53.0%	56,785	77,243	36.0%	124,764	8.8%
TOTAL LANDED WEIGHT								
SCHEDULED CARRIERS								
AEROMEXICO	-	-	0.0%	10,355,000	-	-100.0%	-	-100.0%
ALASKA	157,300	17,724,200	11167.8%	59,894,780	59,193,706	-1.2%	69,689,050	-44.4%
Horizon Air / Alaska	-	-	0.0%	3,597,936	25,635,294	612.5%	41,226,350	239.5%
Skywest / Alaska	15,291,228	38,003,199	148.5%	80,129,033	142,793,085	78.2%	202,159,029	29.2%
AMERICAN	32,742,276	66,138,212	102.0%	249,130,130	351,956,988	41.3%	507,193,160	2.1%
Compass	-	-	0.0%	7,644,900	-	-100.0%	-	-100.0%
Envoy Air (American)	-	5,546,300	100.0%	74,950	12,666,550	16800.0%	13,640,900	9000.0%
American/Mesa Air	-	2,150,700	100.0%	-	7,628,100	100.0%	8,821,700	116.3%
Republic (American)	-	-	0.0%	-	599,600	100.0%	1,499,000	100.0%
SkyWest (American)	4,288,000	8,330,000	94.3%	41,942,000	75,547,000	80.1%	118,628,000	48.8%
DELTA	462,183,015	752,805,564	62.9%	3,120,747,319	4,687,974,524	50.2%	7,552,527,553	16.0%
SkyWest (Delta Connection)	194,395,288	261,449,618	34.5%	1,111,125,685	1,587,973,941	42.9%	2,675,992,763	26.1%
Compass (Delta Connection)	-	-	0.0%	75,177	-	-100.0%	-	-100.0%
FRONTIER	12,258,348	28,989,990	136.5%	78,874,134	144,143,572	82.8%	222,562,114	25.0%
JETBLUE	16,779,600	27,444,600	63.6%	127,269,000	129,544,200	1.8%	177,039,000	-39.4%

**SALT LAKE CITY INTERNATIONAL AIRPORT
LANDING ACTIVITY
SEVEN MONTHS ENDED JULY 2021**

	July 2020	July 2021	CHANGE	YTD 2020	YTD 2021	CHANGE	12 MO ROLLING Ending 07/2021	% CHANGE
KLM ROYAL DUTCH AIRLINES	-	-	0.0%	-	-	0.0%	-	-100.0%
SOUTHWEST	90,320,000	135,949,600	50.5%	584,224,000	673,538,400	15.3%	1,010,082,400	-11.0%
UNITED	-	22,591,640	100.0%	114,234,700	134,885,220	18.1%	188,861,480	-2.7%
GoJet	-	-	0.0%	-	-	0.0%	-	-100.0%
Express Jet	-	-	0.0%	750,000	-	-100.0%	-	-100.0%
Mesa / United Express	1,950,000	4,350,000	123.1%	6,900,000	5,025,000	-27.2%	5,625,000	-73.1%
Republic Airways Holdings	-	-	0.0%	2,318,986	3,548,361	53.0%	4,426,761	-83.7%
SkyWest (United Express)	18,755,540	36,177,456	92.9%	123,736,293	208,769,853	68.7%	305,408,798	15.0%
Trans States	-	-	0.0%	-	-	0.0%	-	0.0%
SUBTOTAL SCHEDULED CARRIERS:	849,120,595	1,407,651,079	65.8%	5,723,024,023	8,251,423,394	44.2%	13,105,383,058	11.1%
CHARTER CARRIERS								
ALLEGIAN AIR	-	-	0.0%	-	-	0.0%	-	-100.0%
BOMBARDIER	1,786,160	1,787,668	0.1%	10,763,659	13,453,943	25.0%	19,693,689	24.6%
BOUTIQUE AIR	-	-	0.0%	-	-	0.0%	-	0.0%
DELTA PRIVATE JETS	-	-	0.0%	-	-	0.0%	-	0.0%
EXECUTIVE JET MANAGEMENT	-	-	0.0%	-	-	0.0%	-	0.0%
FLIGHT OPTIONS	-	-	0.0%	-	-	0.0%	-	0.0%
KALITTA CHARTERS	77,200	-	-100.0%	727,320	1,189,220	63.5%	2,148,440	40.0%
KEYLIME AIR	-	-	0.0%	63,448	131,526	107.3%	131,526	-48.2%
MIAMI AIR	-	-	0.0%	438,900	-	-100.0%	-	-100.0%
NETJETS	4,076,635	5,753,825	41.1%	26,327,475	40,727,339	54.7%	59,002,104	39.4%
SIERRA PACIFIC	-	-	0.0%	110,000	-	-100.0%	110,000	0.0%
SUN COUNTRY	-	-	0.0%	-	-	0.0%	-	0.0%
SWIFT AIR	-	-	0.0%	-	-	0.0%	-	0.0%
VIRGIN AMERICA	-	-	0.0%	-	-	0.0%	-	0.0%
XOJET	715,000	-	-100.0%	4,809,800	3,533,100	-26.5%	6,578,500	-3.2%
OTHER CHARTER	-	-	0.0%	-	-	0.0%	-	0.0%
SUBTOTAL CHARTER CARRIERS:	6,654,995	7,541,493	13.3%	43,240,602	59,035,128	36.5%	87,664,259	29.5%
CARGO CARRIERS								
ABX AIR INC	-	-	0.0%	-	555,000	100.0%	555,000	100.0%
AIRNET 11	-	-	0.0%	-	263,600	100.0%	263,600	100.0%
ALPINE AVIATION	2,571,900	2,690,800	4.6%	17,143,800	16,992,500	-0.9%	28,805,900	-4.8%
AMERIFLIGHT	1,554,400	1,371,900	-11.7%	13,000,550	9,771,782	-24.8%	17,855,182	-28.2%
AMERISTAR	-	-	0.0%	299,700	27,300	-90.9%	27,300	-90.9%
ATLAS AIR	575,000	-	-100.0%	3,621,000	544,000	-85.0%	1,904,000	-54.3%
CORPORATE AIR (BILLINGS)	1,079,500	1,173,000	8.7%	7,420,500	8,211,000	10.7%	12,928,500	-0.4%
EMPIRE	686,945	855,724	24.6%	4,374,755	5,294,456	21.0%	8,203,845	16.2%
FEDEX EXPRESS	54,192,500	49,971,000	-7.8%	357,940,100	355,862,000	-0.6%	637,182,000	3.4%
GEM AIR	442,000	442,000	0.0%	3,106,000	3,324,000	7.0%	6,204,500	10.4%
NORTHERN AIR CARGO	-	2,662,000	100.0%	-	7,260,000	100.0%	7,260,000	100.0%
SOUTHERN AIR INC	968,000	-	-100.0%	16,634,980	-	-100.0%	-	-100.0%
UPS	47,257,100	46,009,440	-2.6%	300,370,140	331,690,100	10.4%	625,417,000	18.7%
WESTERN AIR EXPRESS	273,000	287,000	5.1%	1,976,000	2,077,000	5.1%	3,837,200	74.7%
OTHER CARGO	-	-	0.0%	-	-	0.0%	-	0.0%
SUBTOTAL CARGO CARRIERS:	109,600,345	105,462,864	-3.8%	725,887,525	741,872,738	2.2%	1,350,444,027	7.1%
TOTAL LANDED WEIGHT	965,375,935	1,520,655,436	57.5%	6,492,152,150	9,052,331,260	39.4%	14,543,491,344	10.8%

**SALT LAKE CITY INTERNATIONAL AIRPORT
CARGO ACTIVITY REPORT
SEVEN MONTHS ENDED JULY 2021**

	July 2020	July 2021	CHANGE	YTD 2020	YTD 2021	CHANGE	12 MO ROLLING Ending 07/2021	% CHANGE
ENPLANED CARGO								
PASSENGER CARRIERS								
ALASKA	1,811	7,178	296.36%	77,072	66,722	-13.43%	102,902	-43.23%
Horizon Air / Alaska	-	-	0.00%	1,121	7,344	555.13%	24,379	891.82%
Skywest / Alaska	3,092	1,883	-39.10%	64,144	23,567	-63.26%	85,632	12.95%
AMERICAN	3,810	3,283	-13.83%	86,454	31,484	-63.58%	48,967	-79.90%
American Eagle/Republic	-	-	0.00%	-	-	0.00%	-	0.00%
Compass	-	-	0.00%	120	-	-100.00%	-	-100.00%
Envoy Air (American)	-	50	100.00%	-	50	100.00%	50	100.00%
Mesa	-	-	0.00%	-	10	100.00%	10	100.00%
SkyWest (American)	430	955	122.09%	401,896	8,955	-97.77%	16,055	-96.07%
DELTA	192,901	547,700	183.93%	3,015,671	4,220,213	39.94%	5,660,933	-1.17%
KLM ROYAL DUTCH	-	-	0.00%	-	-	0.00%	-	-100.00%
SOUTHWEST	158,833	383,268	141.30%	1,488,419	1,893,214	27.20%	2,692,881	-9.16%
UNITED	-	5,008	100.00%	40,525	54,044	33.36%	77,816	-11.36%
Others	-	-	0.00%	21,579	9,273	-57.03%	44,540	-26.77%
CARGO CARRIERS								
FEDEX EXPRESS*	10,456,429	9,796,422	-6.31%	67,002,591	67,078,162	0.11%	120,204,886	6.78%
GEM AIR	82,825	65,784	-20.57%	500,507	477,748	-4.55%	950,803	17.28%
SOUTHERN AIR	162,807	-	-100.00%	251,000	-	-100.00%	-	-100.00%
UPS	5,476,039	5,350,192	-2.30%	36,301,322	38,850,318	7.02%	72,449,163	13.50%
MISC CARGO	973,047	848,295	-12.82%	6,912,078	7,954,736	15.08%	12,901,410	9.22%
ABX AIR	-	-	0.00%	-	50,557	100.00%	50,557	100.00%
TOTAL ENPLANED CARGO	17,512,024	17,010,018	-2.87%	116,164,499	120,675,840	3.88%	215,260,427	7.84%
DEPLANED CARGO								
PASSENGER CARRIERS								
ALASKA	546	15,944	2820.15%	40,808	59,343	45.42%	67,374	-52.68%
Horizon Air / Alaska	-	-	0.00%	2,258	11,719	419.00%	35,756	342.09%
Skywest / Alaska	18,398	-	-100.00%	53,005	52,701	-0.57%	112,980	44.75%
AMERICAN	20,922	45,092	115.52%	141,394	185,943	31.51%	300,191	21.15%
American Eagle/Republic	-	-	0.00%	-	-	0.00%	-	0.00%
Compass	-	-	0.00%	187	-	-100.00%	-	-100.00%
Envoy	-	418	100.00%	-	1,240	100.00%	822	100.00%
Mesa (American)	-	-	0.00%	-	256	100.00%	256	100.00%
SkyWest (American)	440	329	-25.23%	3,678	6,041	64.25%	15,529	179.65%
DELTA	289,963	925,288	219.11%	4,023,087	5,476,524	36.13%	6,865,966	-12.72%
KLM ROYAL DUTCH	-	-	0.00%	-	-	0.00%	-	-100.00%
SOUTHWEST	294,167	417,264	41.85%	2,087,038	2,663,174	27.61%	3,838,172	-7.29%
UNITED	-	30,867	100.00%	79,405	155,485	95.81%	195,508	-20.76%
Others	6,610	-	-100.00%	92,356	47,803	-48.24%	204,877	18.20%
CARGO CARRIERS								
FEDEX EXPRESS*	9,128,474	8,704,716	-4.64%	57,320,021	59,439,974	3.70%	106,088,042	7.64%
GEM AIR	25,257	21,088	-16.51%	149,805	156,994	4.80%	272,488	13.21%
SOUTHERN AIR	253,619	-	-100.00%	1,688,688	-	-100.00%	253,619	-90.13%
UPS	8,142,995	6,066,205	-25.50%	47,865,677	42,200,435	-11.84%	84,691,834	-0.27%
MISC CARGO	369,857	568,995	53.84%	3,015,370	3,819,439	26.67%	5,814,687	15.59%
ABX AIR	-	-	0.00%	-	108,180	100.00%	108,180	100.00%
TOTAL DEPLANED CARGO	18,551,248	16,796,206	-9.46%	116,562,777	114,277,071	-1.96%	208,758,101	1.93%
TOTAL CARGO	36,063,272	33,806,224	-6.26%	232,727,276	234,952,911	0.96%	424,018,528	4.85%

*FEDEX EXPRESS includes mail



Salt Lake City
Department of Airports

COMPARISON OF ON TIME OPERATIONS
June 2021

ARRIVALS

Airport	Flights	% On Time	Rank
ATL HARTSFIELD-JACKSON ATLANTA INTL	27,559	86.0	1
MSP MINNEAPOLIS-ST. PAUL INTL	11,125	85.6	2
HNL HONOLULU	4,524	84.2	3
SLC SALT LAKE CITY INTL	10,883	82.8	4
DTW DETROIT METRO WAYNE CNTY	11,676	81.6	5
SEA SEATTLE-TACOMA INTL	15,781	81.5	6
CLT CHARLOTTE DOUGLAS	20,179	80.7	7
IAD WASHINGTON DULLES	5,763	79.0	8
LGA NEW YORK LAGUARDIA	6,878	79.0	9
SFO SAN FRANCISCO INTL	8,220	78.7	10
LAX LOS ANGELES INTL	16,341	78.2	11
PDX PORTLAND INTL	5,094	77.8	12
DCA RONALD REAGAN NATIONAL	7,194	77.1	13
BOS BOSTON LOGAN INTL	7,831	76.8	14
PHL PHILADELPHIA INTL	10,333	76.1	15
PHX PHOENIX SKY HARBOR INTL	13,953	75.8	16
ORD CHICAGO O HARE	27,210	74.4	17
SAN SAN DIEGO LINDBERGH FIELD	6,068	74.4	18
JFK NEW YORK JFK INTL	7,629	74.3	19
MIA MIAMI INTL	8,020	72.4	20
DEN DENVER INTL	24,621	71.2	21
IAH HOUSTON GEORGE BUSH	13,327	70.9	22
DFW DALLAS-FT. WORTH REGIONAL	25,627	70.8	23
LAS LAS VEGAS MCCARRAN INTL	12,673	70.4	24
TPA TAMPA INTL	5,759	70.4	25
EWR NEWARK LIBERTY INTERNATIONAL	8,147	70.3	26
FLL FT. LAUDERDALE	7,846	70.0	27
BWI BALTIMORE/WASHINGTON INTL	6,588	68.1	28
MCO ORLANDO INTL	11,924	65.3	29
MDW CHICAGO MIDWAY	6,248	63.3	30
AVERAGES	11,834	75.6	

DEPARTURES

Airport	Flights	% On Time	Rank
MSP MINNEAPOLIS-ST. PAUL INTL	11,129	86.0	1
HNL HONOLULU	4,527	85.4	2
DTW DETROIT METRO WAYNE CNTY	11,606	83.2	3
SFO SAN FRANCISCO INTL	8,227	83.2	4
SLC SALT LAKE CITY INTL	10,888	82.4	5
PDX PORTLAND INTERNATIONAL	5,096	81.8	6
ATL HARTSFIELD-JACKSON ATLANTA INTL	27,580	81.5	7
IAD WASHINGTON DULLES	3,824	81.1	8
BOS BOSTON LOGAN INTERNATIONAL	7,744	80.3	9
SEA SEATTLE-TACOMA INTL	15,784	80.0	10
LGA NEW YORK LAGUARDIA	6,823	79.9	11
PHL PHILADELPHIA INTL	8,373	79.8	12
DCA RONALD REAGAN NATIONAL	7,076	79.4	13
CLT CHARLOTTE DOUGLAS	18,133	78.8	14
LAX LOS ANGELES INTL	16,354	77.5	15
SAN SAN DIEGO LINDBERGH FIELD	6,068	77.3	16
JFK NEW YORK JFK INTL	7,638	75.9	17
EWR NEWARK LIBERTY INTERNATIONAL	7,137	74.3	18
IAH HOUSTON GEORGE BUSH	11,370	73.1	19
ORD CHICAGO O HARE	23,259	72.8	20
TPA TAMPA INTERNATIONAL	5,761	71.8	21
PHX PHOENIX SKY HARBOR INTL	13,955	70.1	22
MIA MIAMI INTL	8,020	68.5	23
FLL FT. LAUDERDALE	7,849	67.5	24
MCO ORLANDO INTL	11,938	66.2	25
DEN DENVER INTERNATIONAL	23,906	65.7	26
DFW DALLAS-FT. WORTH REGIONAL	25,626	64.5	27
LAS LAS VEGAS MCCARRAN INTL	12,672	64.1	28
BWI BALTIMORE/WASHINGTON INTL	6,580	56.5	29
MDW CHICAGO MIDWAY	6,250	47.3	30
AVERAGES	11,373	74.5	

ON TIME ARRIVAL PERFORMANCE AT SLC
By Carrier

Air Carrier	Flights	% On Time
DL DELTA	7,998	88.9%
AA AMERICAN	627	87.5%
AS ALASKA	342	78.1%
F9 FRONTIER	179	77.7%
UA UNITED	644	74.4%
B6 JETBLUE	167	65.9%
WN SOUTHWEST	926	51.5%
	9,416	91.9%

Source: DOT Air Travel Consumer Report

DESIGN AND CONSTRUCTION REPORT

TABLE OF CONTENTS

- I. Area Map of Project Locations
- II. Project Schedule
- III. Construction Analysis
- IV. Design and Construction Report



Salt Lake City
International Airport

2021 - 2022 Project Legend

Airfield















1. Airfield Lighting Wiring Phase 5
2. T/W G Centerline PCC Panel Replacement
3. North Cargo Apron Site Development

Landside

4. QTA Deck Coating
5. Glycol Plant & Wildlife Services Office Bldg.
6. Electric Vehicle Charging Stations
7. Economy Parking Lot Bus Route Reconfiguration

SALT LAKE CITY INTERNATIONAL AIRPORT
CONSTRUCTION PROGRAM
2021/2022 Construction Schedule

ID	Task Name	Start	Finish	Mar '21	Apr '21	May '21	Jun '21	Jul '21	Aug '21	Sep '21	Oct '21
1	Project Title	Thu 9/17/20	Fri 9/16/22								
2	(1) Airfield Lighting Wiring Phase 5	Tue 4/27/21	Mon 9/20/21								
3	(2) T/W G Centerline PCC Panel Replacement	Mon 5/24/21	Mon 11/1/21								
4	(3) North Cargo Apron Site Development	Mon 8/23/21	Fri 9/16/22								
5	(4) Quick Turn Around (QTA) Deck Coating	Thu 10/1/20	Fri 12/4/20								
6	(5) Glycol Plant & Wildlife Services Office Bldg.	Thu 9/17/20	Wed 6/30/21								
7	(6) Electric Vehicle Charging Stations	Thu 5/13/21	Wed 11/10/21								
8	(7) Economy Parking Lot Bus Route Reconfiguraion	Mon 5/17/21	Tue 9/28/21								

Project: Microsoft Project (latest) Date: Tue 9/7/21	DESIGN		Inactive Milestone		Manual Summary	
	CONSTRUCTION		Inactive Summary		Start-only	
	SCOPING		Manual Task		Finish-only	
	SUMMARY		Duration-only		Deadline	
	Inactive Task		Manual Summary Rollup			

SALT LAKE CITY DEPARTMENT OF AIRPORTS
CONSTRUCTION PROJECT STATUS 2021 - 2022

#	PROJECT NAME	ENGINEER'S ESTIMATE	BID AMOUNT	APPROVED CHANGE ORDERS TO DATE	% OF COST INCREASE TO DATE	STATUS	CONTRACTOR
CONSTRUCTION							
1	Airfield Lighting Wiring Phase 5	\$ 2,875,245	\$ 2,649,958			on schedule	Cache Valley Electric
2	Taxiway G Centerline PCC Panel Replacement	\$ 2,235,325	\$ 2,347,930	\$ 40,218	1.71%	on schedule	Ames Construction
3	North Cargo Apron Site Development	\$ 25,763,000	\$ 22,141,148			on schedule	Ames Construction
4	Quick Turn Around (QTA) Deck Coating	\$ 1,500,000	\$ 1,080,628	\$ 299,960	27.76%	behind schedule*	Paulsen Construction
5	Glycol Plant & Wildlife Services Office Bldg.	\$ 3,106,683	\$ 3,335,000	\$ 123,639	3.71%	on schedule	Cal Wadsworth Construction
6	Electric Vehicle Charging Stations	\$ 291,764	\$ 360,000			on schedule	Saunders Construction
7	Economy Parking Lot Bus Route Reconfiguration	\$ 1,824,590	\$ 1,775,112	\$ 18,113	1.02%	on schedule	Cal Wadsworth Construction
	Total	\$ 37,596,607	\$ 33,689,776	\$ 481,930	1.43%		
* Coordinating with car rental companies for work areas.							
Budget amount, Engineer's estimate, and Bid amount is based on construction cost only.							

CONSTRUCTION REPORT

CONSTRUCTION

- (1) **Airfield Lighting Wiring Phase 5** - The Contractor has returned to working day shifts, five days per week, from 7:00 a.m. to 5:30 p.m., Monday through Friday. Work in September will include installing new electrical wire for taxiway lighting circuits and replacing taxiway light fixture components on Taxiways A and B, north of Taxiway A6.
- (2) **Taxiway G Centerline PCC Panel Replacement** - Phase 1 between Taxiway U and the Taxiway S/H10 intersection is nearly complete with final clean up and paint remaining. It is anticipated that Phase 2, north of Taxiway U to the south of the Runway 16L deicing pad will begin next week.
- (3) **North Cargo Apron Site Development** - The Contractor, Ames Construction was issued a notice to proceed on August 23, 2021. Submittals are currently being reviewed by SLCDA for approval. Earthwork operations have begun to clear the project site.
- (4) **Quick Turn Around (QTA) Deck Coating** - The structural repair work on the beams has been completed. The carbon fiber material for the beams has arrived on site and installation has started.
- (5) **Glycol Plant and Wildlife Services Office Building** - The Contractor is nearing 95% completion with work continuing on the finishes, and the communication and security systems. Delivery delays with some of the control components has impacted the final completion date. The project is anticipated to be completed by the end of September 2021.
- (6) **Electric Vehicle Charging Stations** - Seven of the twelve charging stations have arrived on site along with one of the three transformers. Construction is approximately 55% completed.
- (7) **Economy Parking Lot Bus Route Reconfiguration** - The Contractor has completed Phase 1, consisting of repaving the north/south lanes of the Economy Lot in concrete with the exception of the paint markings. The east/west lanes of Phases 2 and 3 have been paved. The signpost work is currently taking place.



Advisory Board
Meeting

September 15, 2021

Media Clippings

<https://slcairport.com/assets/pdfDocuments/AABoard/SeptClippingPacket2021.pdf>

Compiled by the Communication & Marketing Dept.