



Advisory Board
Meeting

February 15, 2023

Agenda



Advisory Board Meeting

February 15, 2023

Pursuant to City Code 2.14.060(A) and Utah Code section 52-4-207(2), the Airport Advisory Board adopted a rule permitting electronic meetings for this Board, regardless of whether a quorum is present at an anchor location, so long as such meetings comply with the Open and Public Meetings Act.

To access the meeting please visit:

<https://saltlakecity.webex.com/saltlakecity/onstage/g.php?MTID=ece9e23bdb4e600e5e9f6b60c7e553400>



ADVISORY BOARD MEETING AGENDA

15 February 2023

9:00 A.M.

CONSENT

- A. Minutes of the 18 January 2023 Meeting

DISCUSSION

- A. Director's Report – Bill Wyatt, Executive Director, SLCDCA
- B. Airport Redevelopment Program (ARP) Update – Mike Williams, ARP Director, SLCDCA
- C. NBA All-Star Airport Game Plan- Nancy Volmer, Communication and Marketing Director, Treber Andersen, Director of Operations, Eddie Clayson, Director of Airport Maintenance,

MEDIA CLIPPINGS

Media Clippings –February 2022

INFORMATION ITEMS

Financial Report- December 2022
Air Traffic Statistics –December 2022
Construction Report –February 2022

The next meeting will be held on **Wednesday, March 15, 2023**, at 9:00 a.m. Meetings are usually held in the Board Room, located on the third level of the airport terminal and via Web-ex unless otherwise posted. People with disabilities may make requests for reasonable accommodations no later than 48 hours in advance in order to attend this [Airport Advisory Board Meeting](#). Accommodations may include alternate formats, interpreters, and other auxiliary aids. This is an accessible facility. For questions or additional information, please contact [Brett Christensen](#) at [801-575-2042](tel:801-575-2042).



Advisory Board
Meeting

February 15, 2023

Minutes

SALT LAKE CITY DEPARTMENT OF AIRPORTS MINUTES OF ADVISORY BOARD MEETING

January 18, 2023

Members Present: Steve Price, Chair
Theresa Foxley
John Bradshaw
Cyndy Miller
Jess Bird*
Roger Boyer*
Tye Hoffman*
Dirk Burton

Department of Airports: Bill Wyatt, Executive Director
Brett Christensen, Executive Assistant
Treber Andersen, Director of Operations
Eddie Clayson, Director of Maintenance
Medardo Gomez, ORAT Director
Brady Fredrickson, Director of Planning and Environmental
Pete Higgins, Chief Operations Officer
Nancy Volmer, Communication and Marketing Director
Melyssa Trnavskis, Director of Design and Construction Mgmt.
Ed Cherry, Director of IT*
Shane Andreasen, Director of Admin. and Commercial Services
Brian Butler, Chief Financial Officer
Stefhan Bennett, SLC Police Captain*
Brian Stetson, Deputy Program Director, SLCDA
Nate Lavin, Airport Service Development Manager *

Other: Rachel Otto*
Sam Owen *
Robert Bergman
Louis Miller, Visitor
Mike Taylor
Brian Bangerter, HNTB
Paul Coates*

Theresa Foxley called the meeting, held in person at the SLCDA Admin Offices Board Room and via Webex, to order at 9:06 a.m. (* indicates the party attended virtually)

AGENDA

A. Minutes

A motion was made by Theresa Foxley and seconded by Cyndy Miller to approve the minutes of December 07, 2022, as presented. All votes were affirmative; the motion passed.

B. Director's Report

Bill Wyatt, Executive Director, gave an update to the Airport Advisory Board regarding current events including

- A new study that was released, ranking the SLC Airport third worldwide in on time services, and number one in the U.S.
- NBA All Star games will be in SLC over Presidents Day Weekend. TSA is expecting 40,000 passengers, beating our all time record of 32,000
- The airport is working on the budget process, it will be presented to the council in April
- Planning of the early stages of the next bond issue
- We are asking for Board Members input on what information they'd like to have and what presentations they'd like to see at this year's meetings

C. Airport Redevelopment Program (ARP) Update – Brian Stetson, Deputy Program Director, SLCDA

Brian Stetson, Deputy Program Director, presented an update on the ARP (presentation on file). Main points included were:

- Safety and Schedule Stats, and Cost Summary
- Near Term Schedule Milestones
- ARP Overall Budget
- Concourse 'A' East/Central Tunnel/Airfield
- Concourse 'B' East
- Overall Phase 2, Phase 3 and Phase 4 Phased Delivery

Dirk Burton asked if the budget amount was for SLC alone or does it cover the other two airports' budgets as well? Brian Stetson replied that it was solely for the SLC Airport.

John Bradshaw inquired about the economy slowing and asked if we are seeing the effects of that? Stetson explained because of our aggressive schedule, labor has been a challenge, but the trade contractors have been able to support the project mostly with local forces.

Bill Wyatt added that this is a topic most large hubs are struggling with on the operations side, there has been a pay increase but the problem is still there.

Steve Price asked about the importance of an early gate and what that means. Also asking what concessions will be open in concourse A East? Wyatt explained the benefit to the early gates is to take away some of the hardstands which will make it a shorter walk.

Stetson then explained Burger King will have access to their space March 1st. And all concessions will be open by the November opening.

Tye Hoffman asked about getting a vendor for currency exchange. Wyatt explained we are looking into an ATM type operation with a few different currencies.

D. Snow Removal Operation, Eddie Clayson, Director of Airport Maintenance, SLCDA

Snow Removal Operation, Eddie Clayson, Director of Airport Maintenance. Main points included were:

- Responsibilities
 - Safe/efficient flow of passengers, bags, and aircrafts
- Snow Team
 - Operations/Maintenance
 - When the snow team goes out, they take an electrician and a mechanic
- Training
 - Pre and Post Season
 - Safety
 - Post Season Review
- Planning/Scheduling
 - Weather Net and UDOT
 - Staff On Call
 - Historical Data
 - Call Out
- Snow Removal Areas
 - 1,353 Acres of Pavement
- Pretreat
 - By pretreating properly, we can keep the snow from forming
 - All Chemicals are Environmentally safe
- Equipment
 - Blowers
 - 16-‘Multi use’ machines that consist of a plow, broom and blower
- Contracts (3rd Party)
 - A third party comes and takes the snow off the airfield

John Bradshaw asked what poor braking action means. Eddie Clayson explained it's when the ground is slick.

Price asked what is a far 139 compliant airport? Wyatt explained it is part of the Federal Aviation act, it covers regular testing such as firefighters being able to deliver equipment to the center point of the most distant runway within a certain amount of time.

E Election of Board Chair and Vice-Chair

At our last meeting, Theresa Foxley was nominated for the position of Board Chair and John Bradshaw was nominated for the position of Vice Chair.

Cynthia Miller asked for a motion to elect by acclamation Theresa Foxley for the position of Board Chair. Motioned passed, none opposed.

Cynthia Miller asked for a motion to elect by acclamation John Bradshaw for the position of Vice Chair. Motioned passed, none opposed.

Price adjourned the meeting at 10:19 a.m.

Theresa Foxley, Chair

Date

Erin Mendenhall, Mayor

Date



Advisory Board
Meeting

February 15, 2023

Discussion Items

AGENDA: DISCUSSION ITEM (A)
DATE: 15 February 2023
TO: Airport Advisory Board
FROM: Bill Wyatt, Executive Director
SUBJECT: Executive Director's Report

Bill Wyatt, Executive Director, will present a monthly informational report to the Board, which may include:

1. ARP progress
2. Ground transportation update
3. Concessions and rental cars
4. Airport safety and security
5. Airport facilities and operations
6. General aviation
7. Passenger and airport users
8. Environmental matters
9. Financial condition
10. Legislative issues
11. Airlines
12. Communications and marketing

AGENDA: DISCUSSION ITEM (B)
DATE: 15 February 2023
TO: Airport Advisory Board
FROM: Bill Wyatt, Executive Director
SUBJECT: Airport Redevelopment Program Update

Mike Williams, Airport Redevelopment Program (ARP) Director, will present an update on the SLC Airport Redevelopment Program (presentation on file).



AIRPORT REDEVELOPMENT PROGRAM

Status Update 02/15/2023



Safety, Statistics and Schedule



Safety Statistics

Numbers for October

- **OSHA National Average**
 - **Lost Time Rate 1.60 Recordable Rate 2.50**
- **HDJV Metrics**
 - **10,108,276 Total Trade Hours worked**
 - **Lost Time Rate 0.23 Recordable Rate 2.30**

Trade Hours for the Program Overall

- **ARP Metrics (HDJV+AOJV)**
 - **12,269,891 Total Trade Hours worked**

Trade Workers on Site

- **647 Trade Workers (week ending 02/03/2023)**

Schedule Status - Critical Path

- **SCE – Completion of Early Five Gate Interior Finishes**
- **SCE – Start-up and Commissioning of Building Systems in Support of Early Gates**
- **SCE – Completion of Apron Paving, Striping & Airfield Scope supporting Early Gate Activation**
- **NCP Phase 3 – Start of Area G/Delta Sky Club Expansion Structural Steel Erection and Decking Placement**
- **Overall Program is on schedule**

Near Term Schedule Milestones



Target Date	Current Date	Description
01/23/23	Complete	Central Tunnel - Start Terrazzo Area D
02/06/23	02/14/23	SCE - Complete Millwork/Terminations/Connections Level 2 Area C
02/14/23	02/14/23	NCP Phase 3 - Complete Slab-on-Grade Area G Around Tunnel
02/20/23	02/20/23	NCP Phase 3 - Start Rough Steel Erection Area G North
02/21/23	02/21/23	SCE - Complete State Elevator Inspection Area A
02/23/23	02/23/23	NCP Phase 3 - Start Curtainwall Area H
02/24/23	02/24/23	SCE - Complete Paving at the Building in Area D & E
02/27/23	02/27/23	NCP Phase 3 - Complete Upper Roofing Area H

Airport Redevelopment Program Overall Budget



Construction Budget January 2023	Budget 12/22/22 FOC	Committed Dec-22	Commitments Jan-23	Revised Commitments	Earned to Date	Estimate at Completion
Closed TRP CGMPs 1, 2, 2A-2D, 3-7, 9, 09A, 12	\$1,933,090,276	\$1,933,090,276	\$0	\$1,933,090,276	\$1,933,090,276	\$1,933,090,276
Closed NCP CGMPs 13, 14, 15, 16, 17, 18 & 19	\$487,852,444	\$487,852,444	\$0	\$487,852,444	\$487,852,444	\$487,852,444
CGMP 2E & F CMAR General Conditions/Services	\$99,720,169	\$99,720,169	\$0	\$99,720,169	\$42,976,141	\$99,720,169
CGMP 2G CMAR Preconstruction Phase 4	\$46,780,829	\$46,780,828	\$0	\$46,780,828	\$1,938,255	\$46,780,829
CGMP 10 South Concourse East/Tunnel Shell	\$559,228,026	\$554,410,047	\$0	\$554,410,047	\$442,230,122	\$559,228,026
CGMP 11, 11A & 11B Apron Paving & Fueling	\$274,269,021	\$274,269,021	\$0	\$274,269,021	\$162,504,632	\$274,269,021
CGMP 19A Phase 3 NCP/Tunnel Buildout	\$370,537,208	\$348,527,387	\$0	\$348,527,387	\$95,436,846	\$370,537,208
CGMP 20 NCP Phase 2 Airfield Paving & Jet Fuel	\$78,108,685	\$77,645,774	\$0	\$77,645,774	\$8,818,073	\$78,108,685
CGMP 22 & 22F Phase 4 Concourse	\$498,523,113	\$91,381,793	\$0	\$91,381,793		\$498,523,113
CGMP 24 Phase 4 Airfield	\$62,627,532	\$62,627,532	\$0	\$62,627,532		\$62,627,532
Total Program Construction	\$4,410,737,303	\$3,976,305,271	\$0	\$3,976,305,271	\$3,174,846,789	\$4,410,737,303
TRP Owner Procurement	\$5,472,527	\$5,472,527	\$0	\$5,472,527	\$4,808,421	\$5,472,527
NCP Owner Procurement	\$3,039,266	\$3,039,266	\$0	\$3,039,266	\$1,860,182	\$3,039,266
Security Checkpoint Equipment	\$12,751,472	\$11,751,472	\$0	\$11,751,472	\$7,848,061	\$12,751,472
Automated Security Exit Door Equipment	\$917,430	\$917,430	(\$2,977)	\$914,453	\$914,453	\$917,430
TRP Soft Cost	\$385,920,050	\$336,552,926	\$108,455	\$336,661,381	\$308,640,452	\$385,920,050
NCP Soft Cost	\$185,593,794	\$139,812,674	\$697,986	\$140,510,660	\$117,372,209	\$185,593,794
NCP Soft Cost Phase 4	\$67,295,769	\$17,792,076	\$598,919	\$18,390,995	\$17,613,483	\$67,295,769
Total Program Soft Cost	\$660,990,308	\$515,338,371	\$1,402,383	\$516,740,754	\$459,057,261	\$660,990,308
TRP Owner Reserve	\$16,487,944	\$0	\$0	\$0	\$0	\$16,487,944
NCP Owner Reserve	\$46,757,507	\$0	\$0	\$0	\$0	\$46,757,507
Total Program Owner Reserve	\$63,245,451	\$0	\$0	\$0	\$0	\$63,245,451
Total ARP Program Budget	\$5,134,973,062	\$4,491,643,642	\$1,402,383	\$4,493,046,025	\$3,633,904,050	\$5,134,973,062

Airport Redevelopment Program Trade Contractor Award Statistics



Contract Local/Non-Local Awarded Statistics				
Local Trades		Dollar Value	Trade Count	Percentage
Total Local (Wasatch Front) Contractors		\$1,680,638,753	151	67.92%
Total Out of State Contractors		\$793,922,787	38	32.08%
Total Contract Awards		\$2,474,561,540	189	100.00%

Contract Union/Merit Shop Awarded Statistics				
Union Trades		Dollar Value	Trade Count	Percentage
Total Union Contractors		\$863,232,250	43	34.88%
Total Merit Shop Contractors		\$1,611,329,290	146	65.12%
Total Contract Awards		\$2,474,561,540	189	100.00%

Concourse 'A' East/ Central Tunnel/Airfield



Central Tunnel

- **Moving Walkway Installation Progressing**
- **Mechanical, Electrical, Plumbing and Fire Protection Installation Progressing**
- **Passenger Cell Area Wall and Soffit Painting Underway**
- **Passenger Cell Area Ceiling Installation Underway**
- **Passenger Cell Area Terrazzo Installation Underway**
- **High Speed Baggage Conveyor Installation Progressing**

Concourse 'A' East

- **BHS Early Bag Storage Conveyor Installation Progressing**
- **IT/Special Systems Cabinet/Cabling Installation Progressing**
- **Ceiling Grid and Column Cover Installation Continuing**
- **Terrazzo Installation in Main Circulation Areas Complete**
- **Terrazzo Polishing underway**
- **Restroom Fixture, Millwork, Toilet Partitions and Mirror Installation Progressing**
- **Holdroom Carpet Installation Progressing**
- **Holdroom Gate Signage Installation Progressing**
- **Passenger Boarding Bridge Installation Progressing**
- **Gate Millwork Installation in Early Gate Areas Underway**

Concourse 'A' East/ Central Tunnel/Airfield



Airfield

- **Site Utilities Progressing**
- **Hydrant Fuel System Emergency Fuel Shut Off System(EFSO) Installation Nearing Completion**
- **Airfield Paving South and North Sides of Concourse 'A' Progressing to Support Passenger Boarding Bridge Installation**

Concourse 'B' East - 8 Gates (Phase 3)



Concourse 'B' East 8 Gates (Phase 3)

- **Foundation Formwork, Concrete Placement and Slab on Grade Progressing to Support Node Structural Steel Erection**
- **Structural Steel Erection Scheduled to Start at Node 2/20/2023**
- **Exterior Stud and Sheathing Installation Progressing**
- **Exterior Curtainwall Underway Starting at East End**
- **Roofing Underway Starting at East End**
- **Mechanical, Electrical, Plumbing and Special Systems Rough-in Underway**
- **Interior Studs for Priority Rooms Underway**

Concourse 'B' East – 16 Gates (Phase 4)



Concourse 'B' East 16 Gates (Phase 4)

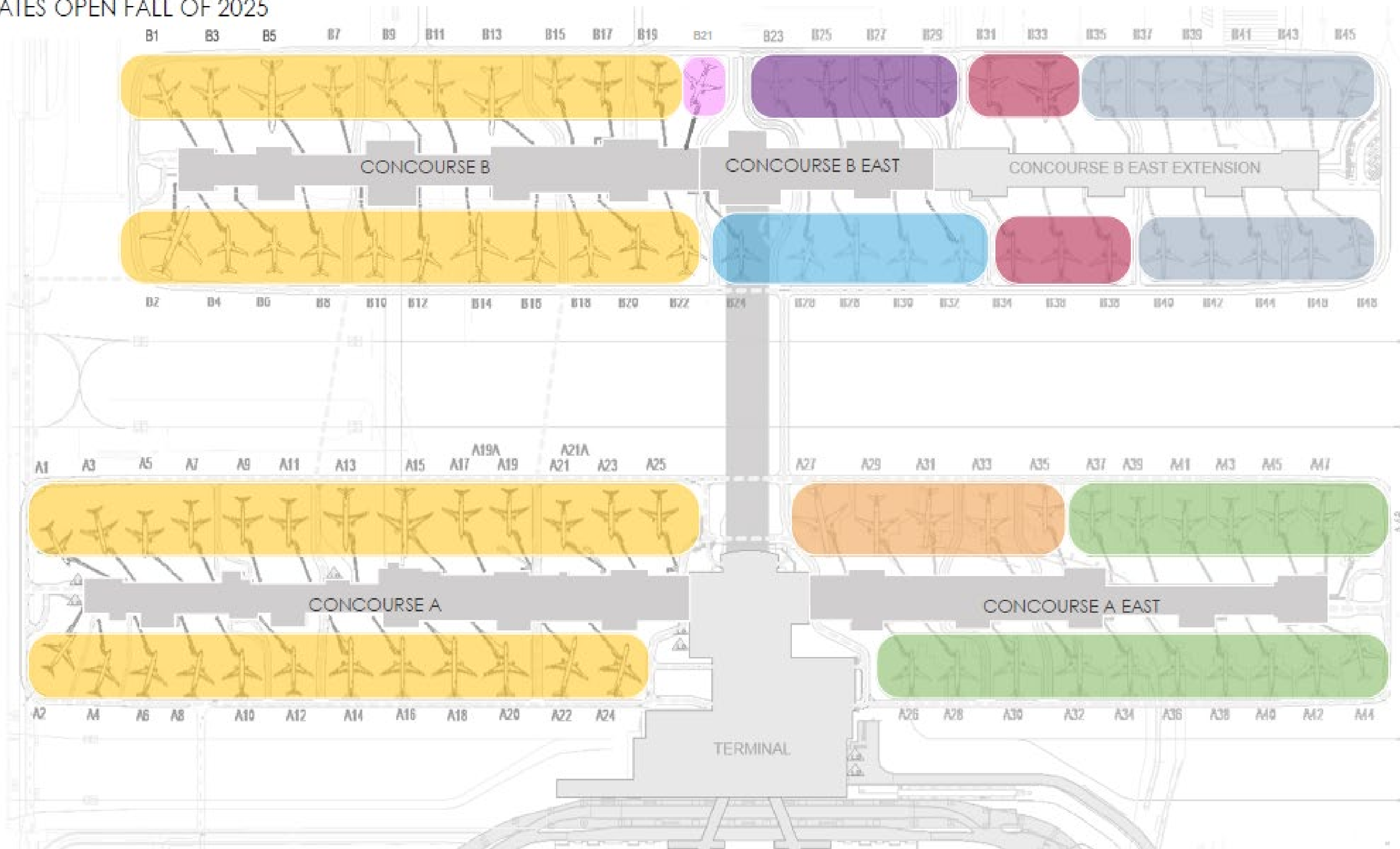
–Balance of Building Trades Issued for Bid



Overall Phase 2, Phase 3 and Phase 4 Phased Delivery



- 46 CURRENT GATES OPEN
- 05 GATES OPEN SPRING OF 2023
- 17 GATES OPEN FALL OF 2023
- 05 GATES OPEN FALL OF 2024
- 04 GATES OPEN FALL OF 2025
- 05 GATES OPEN JAN OF 2026
- 11 GATES OPEN JAN OF 2027
- 01 GATE OPENS NOV OF 2027



Concourse A East – Early 5-Gate Area Interior



Concourse A East – Level 1 Interior



Area C Flooring Installation



Area F Comm Room Rack Installation



Delta Community Credit Union Build-out

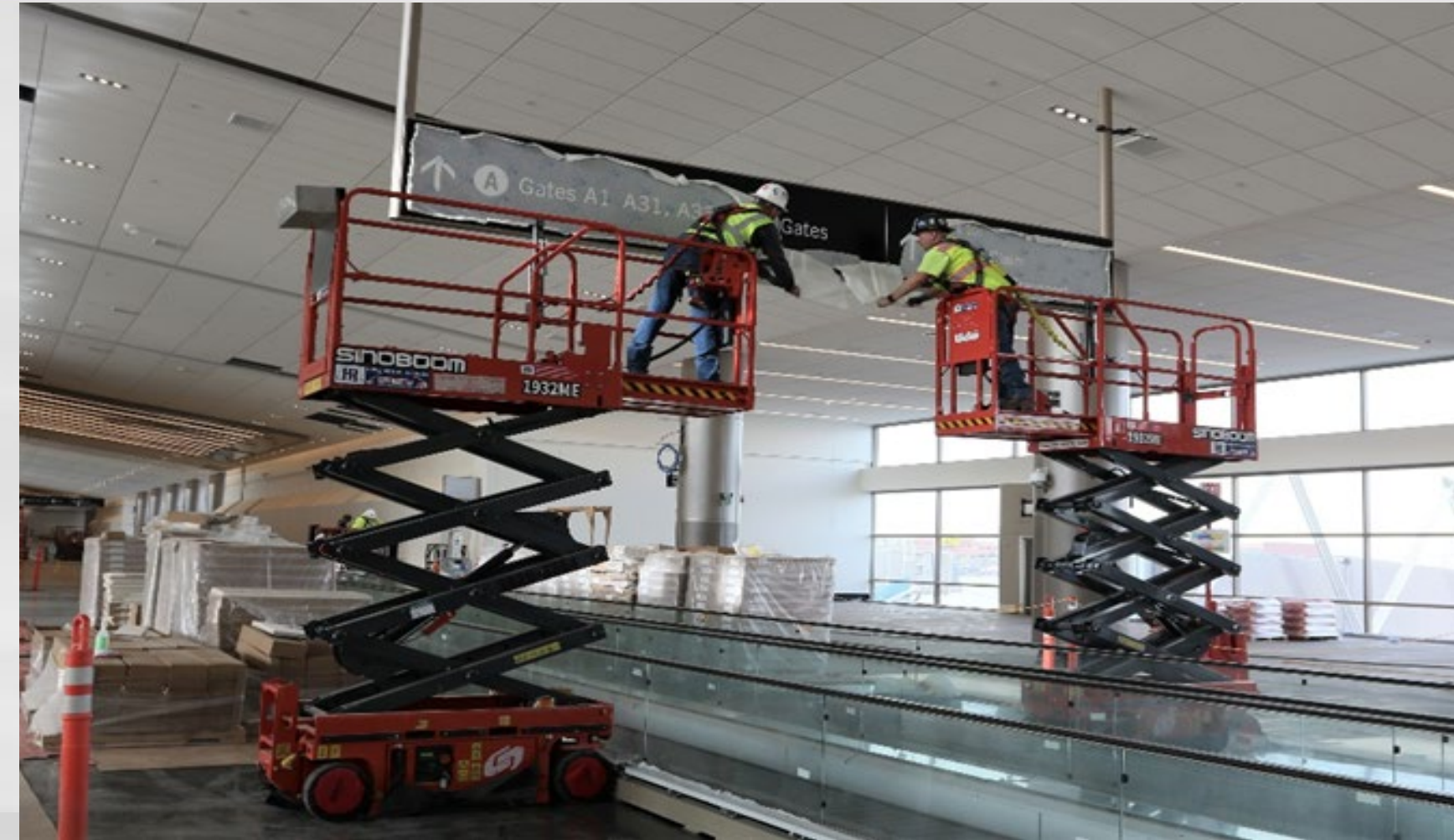


BHS Early Bag Storage Electrical Wiring

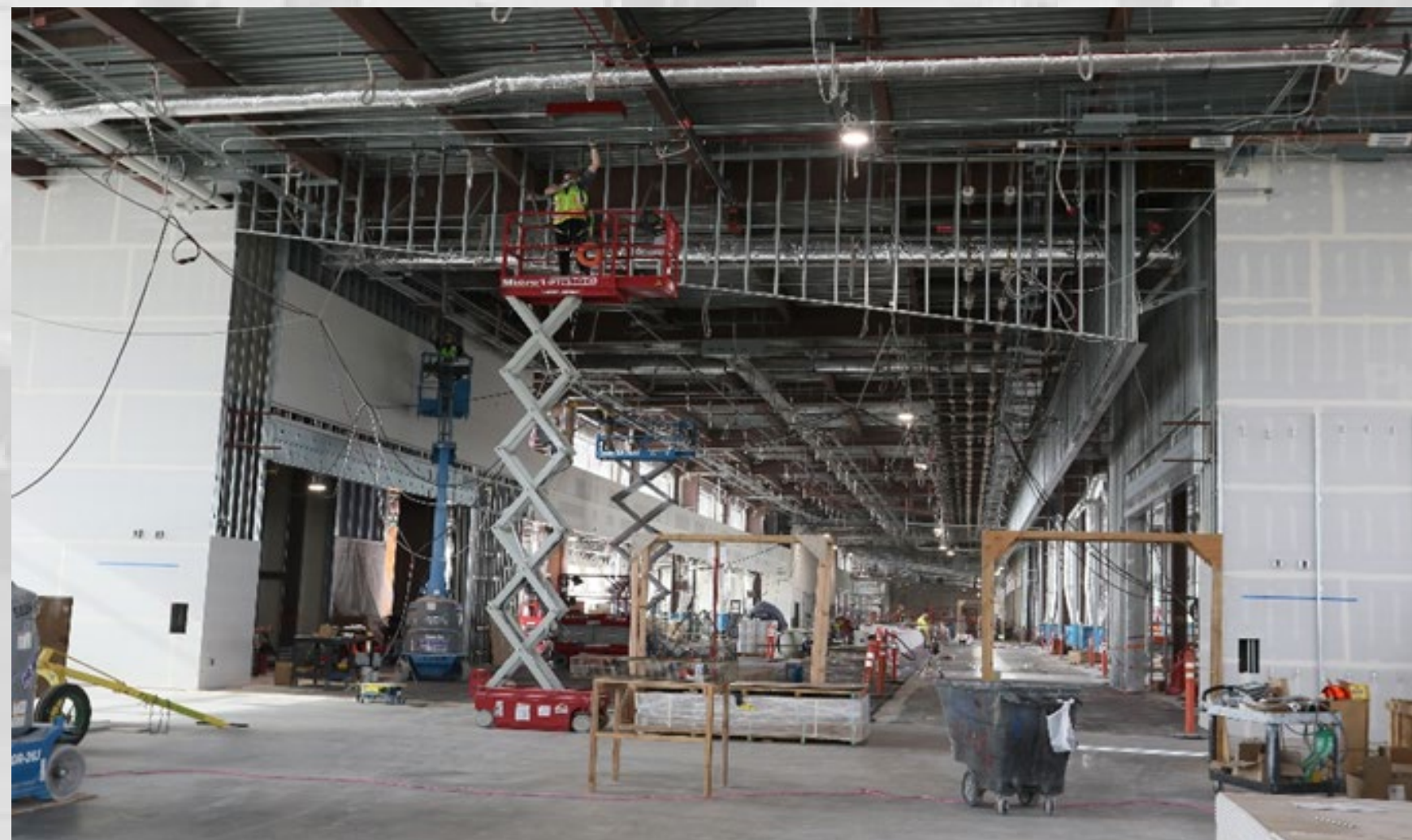
Concourse A East – Level 2 Interior



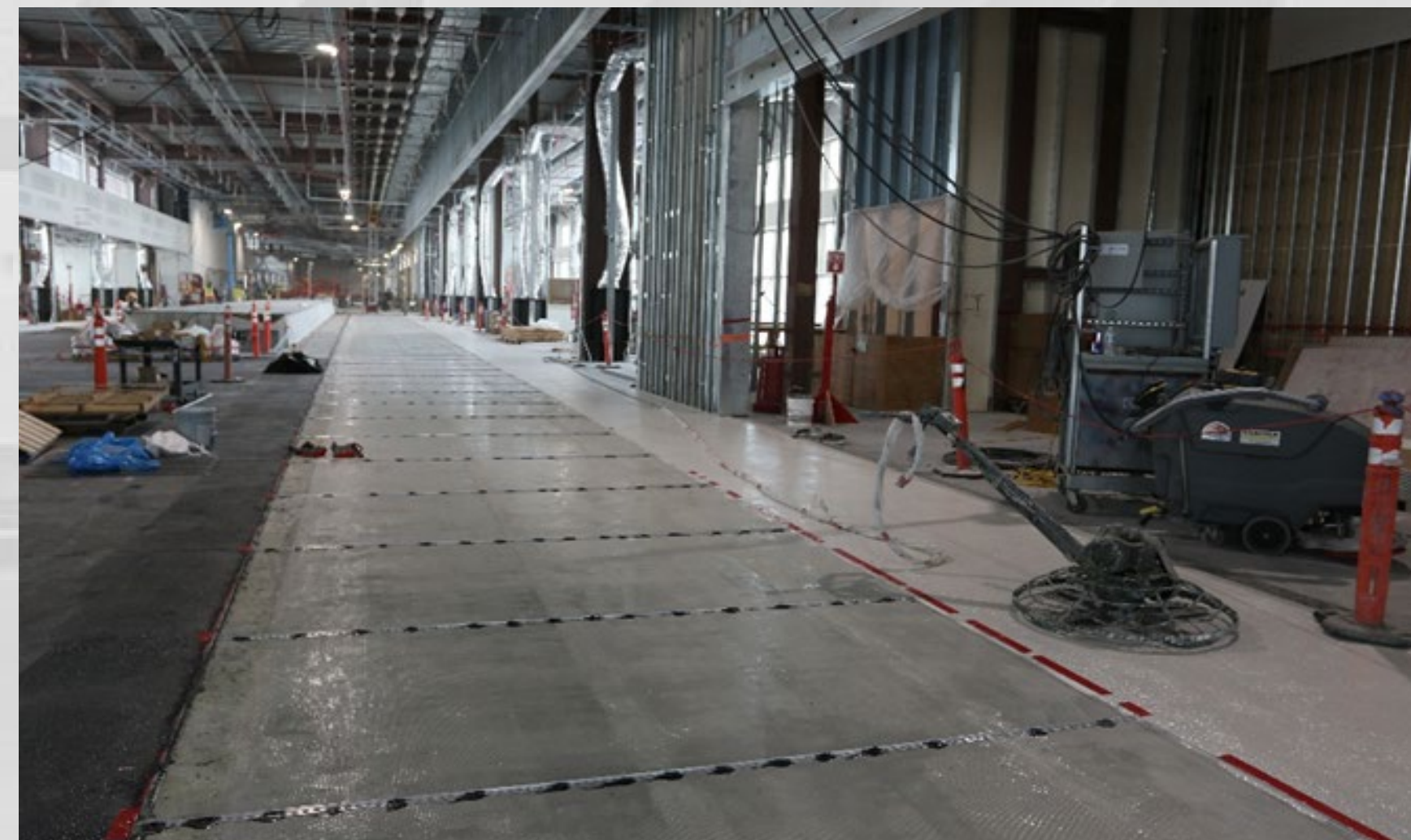
Gate Millwork and Finishes



Overhead Sign Installation



Far East End Looking West

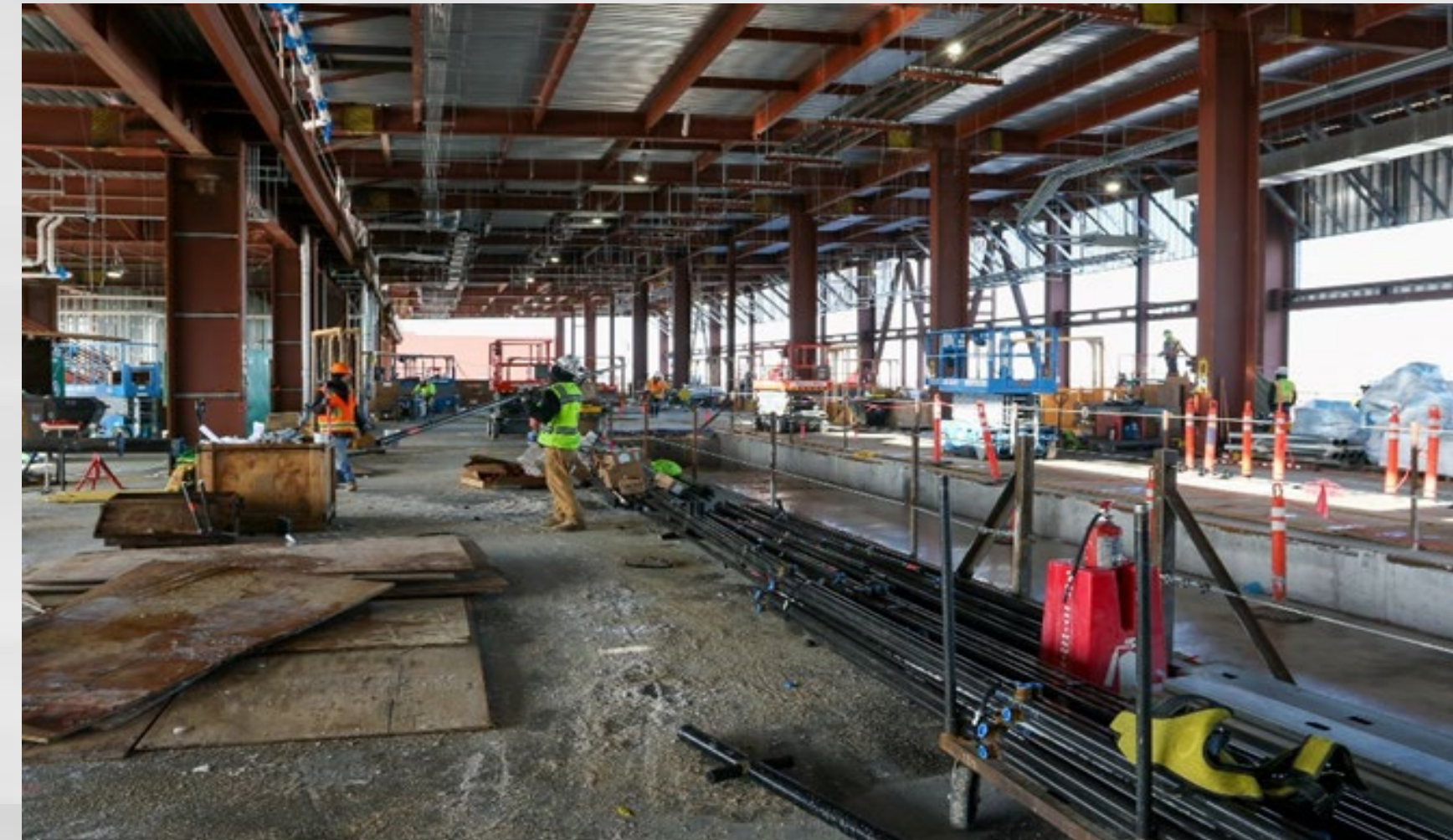


Prep for Last Area of Terrazzo

Concourse B East



Public Restroom Studs and Carriers



Level 2 Looking West



Area H Level 3 Spray Fireproofing



Area J Baggage Make-up Carousel Protection

Central Tunnel – Interior Progress



Area G Level 0 Framing



Area G Level 0 Escalator Installation



Stairs into APM Cell



Pax Cell Blue Paint and Ceilings for Artwork

The New SLC January 2023



AGENDA: DISCUSSION ITEM (C)
DATE: 15 February 2023
TO: Airport Advisory Board
FROM: Bill Wyatt, Executive Director
SUBJECT: NBA All-Star Airport Game Plan

Nancy Volmer, Communication and Marketing Director, Treber Andersen, Director of Operations, and Eddie Clayson, Director of Airport Maintenance will present an update on the NBA All-Star Airport Game Plan (presentation on file).



NBA ALL-STAR AIRPORT GAME PLAN

February 17 through 19, 2023





TRAVEL BEHAVIOR

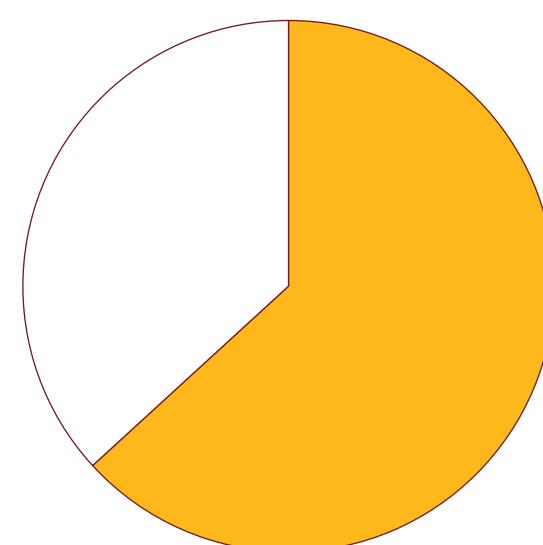
NBA All-Star 2022 attracted **68,041** unique attendees of which **41,585** were unique non-local attendees from **24 countries and 45 states** and territories, including the District of Columbia and Puerto Rico. NBA All-Star 2022 offered Cleveland an opportunity to shine as a premier travel destination, with 24.1% visiting Cleveland for the first time and **87.6% citing the event as their primary reason for visiting.**

TOP NON-US COUNTRIES

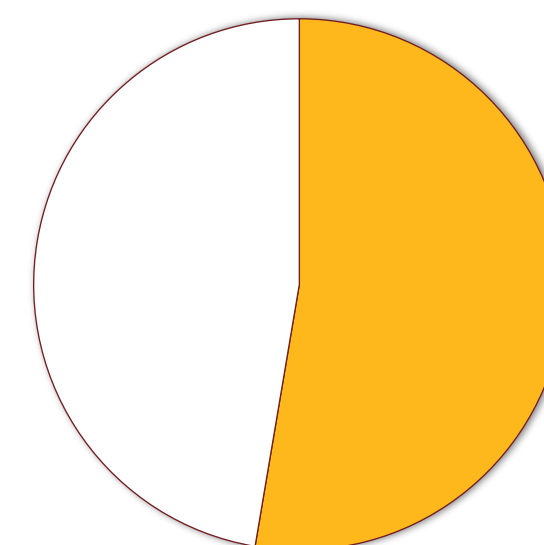
8.4% CANADA **2.7%** UK
1.3% BRAZIL **1.3%** SPAIN

TOP STATES

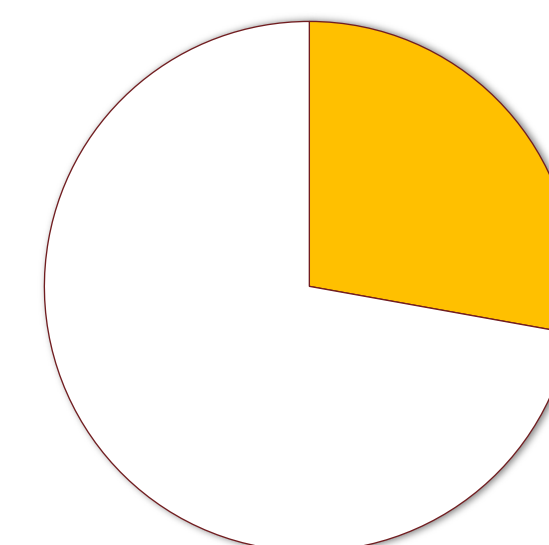
33.0% OHIO **4.0%** NEW YORK
3.0% CALIFORNIA **2.6%** MICHIGAN



63%
 WOULD
 RECOMMEND
 CLEVELAND AS A
 TRAVEL
 DESTINATION



53%
 PLAN ON
 RETURNING TO
 CLEVELAND FOR
 VACATION IN
 NEXT
 12 MONTHS



24%
 FIRST VISIT TO
 CLEVELAND



Image, Program, Inform

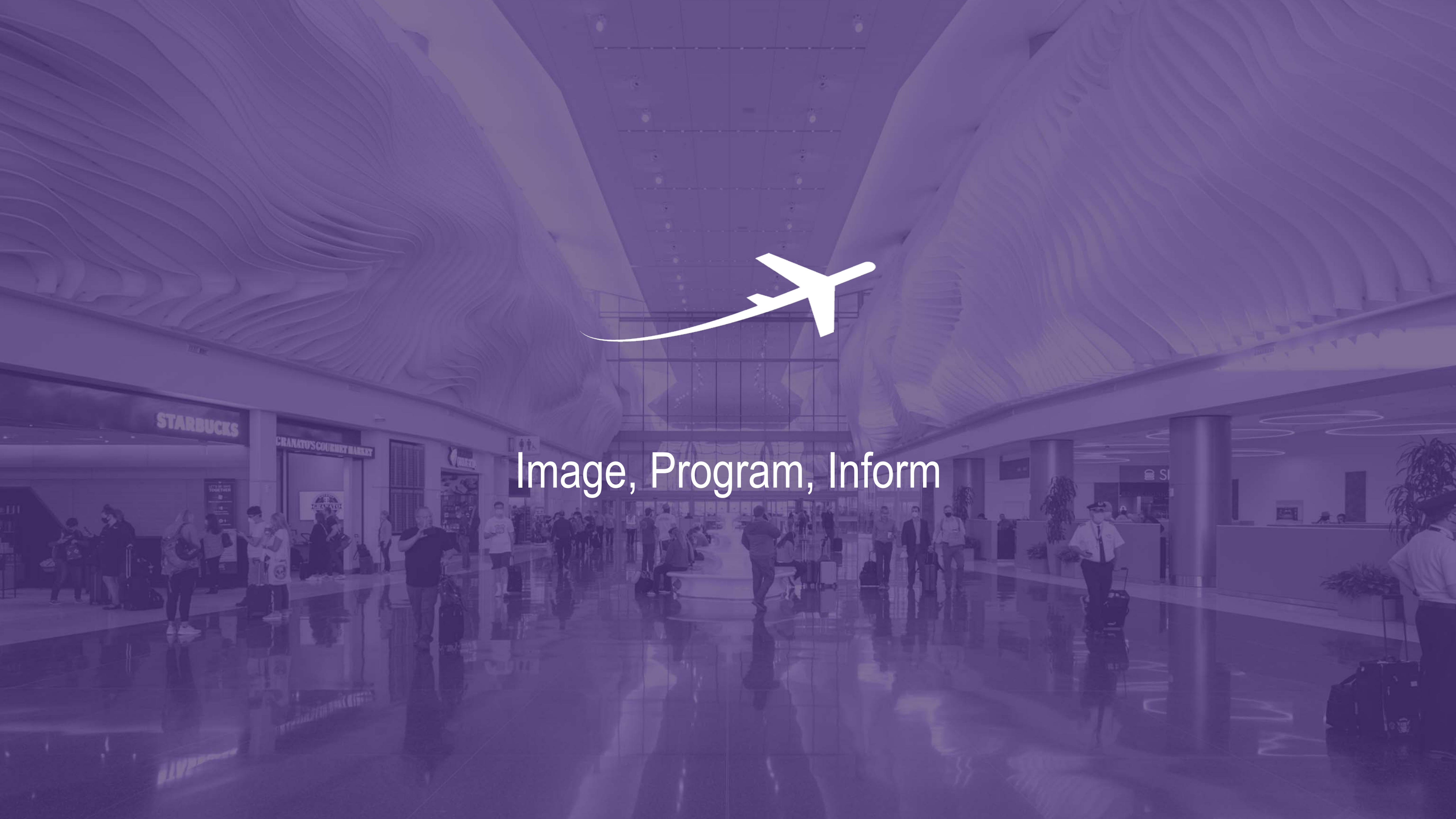
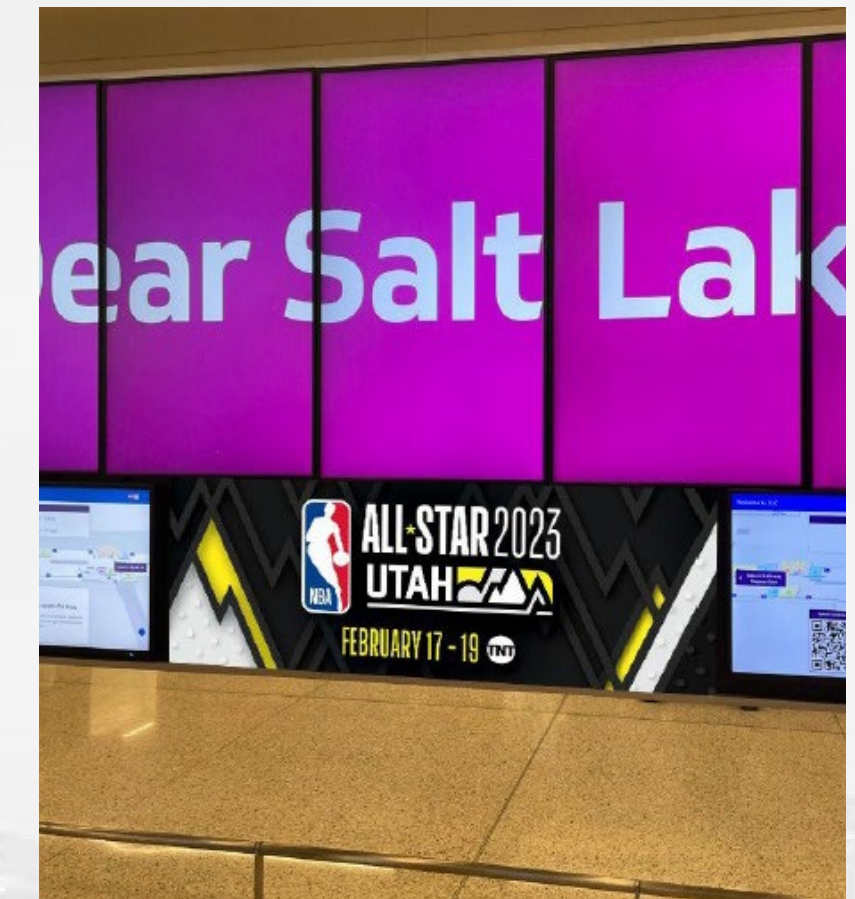


Image – Dress Up the Airport to Welcome Guests



Programming - Performers





SLC INTERNATIONAL Q &

WHAT'S NEXT AT YOUR NEW SLC

MORE ADDITIONS ARRIVING 2023-2024

- 22 ADDITIONAL GATES
- 19 NEW SHOPS AND RESTAURANTS
- CENTRAL TUNNEL TO CONCOURSE B
- THE NEW SLC NEWS



Tips for an All-Star Travel Experience

SLC is thrilled to be the first stop for your All-Star Game experience in Salt Lake City. Follow these travel tips to help ensure your trip to and from Salt Lake is a slam dunk.

Follow these tips for an ALL-STAR travel experience on Monday, Feb. 20:



5 HOURS BEFORE DEPARTURE
Check out of your hotel.



4 HOURS BEFORE DEPARTURE
Return your rental car.



3 HOURS BEFORE DEPARTURE
Check in at the ticket counter.



2 HOURS BEFORE DEPARTURE
Proceed to security.



1 HOUR BEFORE DEPARTURE
Arrive at your gate.

More travel tips for Presidents' Day weekend: >>>





Terminal, Landside, General Aviation & Other Preparations

Considerations

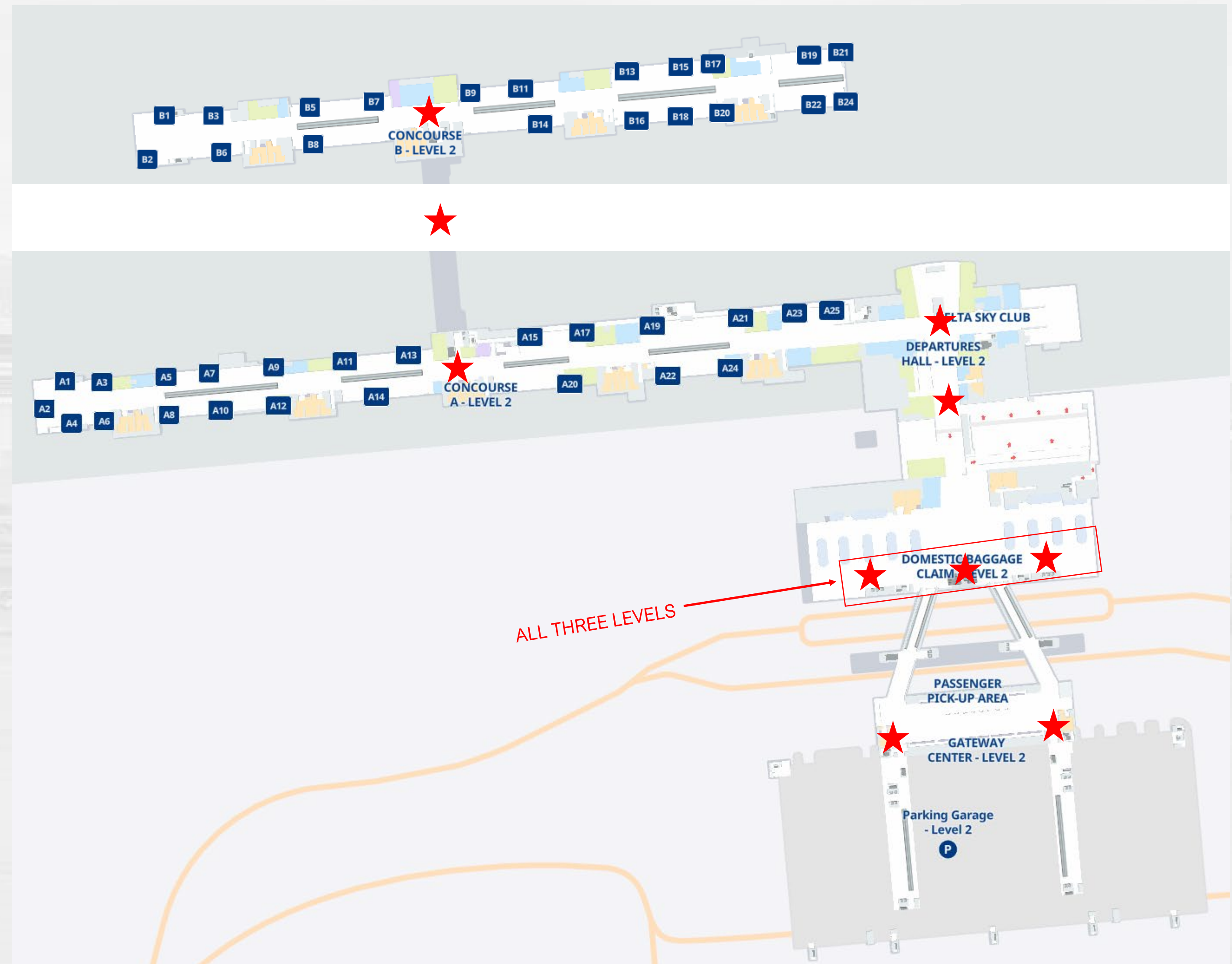
- Presidents' Day Weekend
- Record Breaking Passenger Activity
- Heavy Ground Transportation Traffic
- Increased Private Aircraft Activity
- Potential for Inclement Weather



Terminal & Landside – Customer Assistance



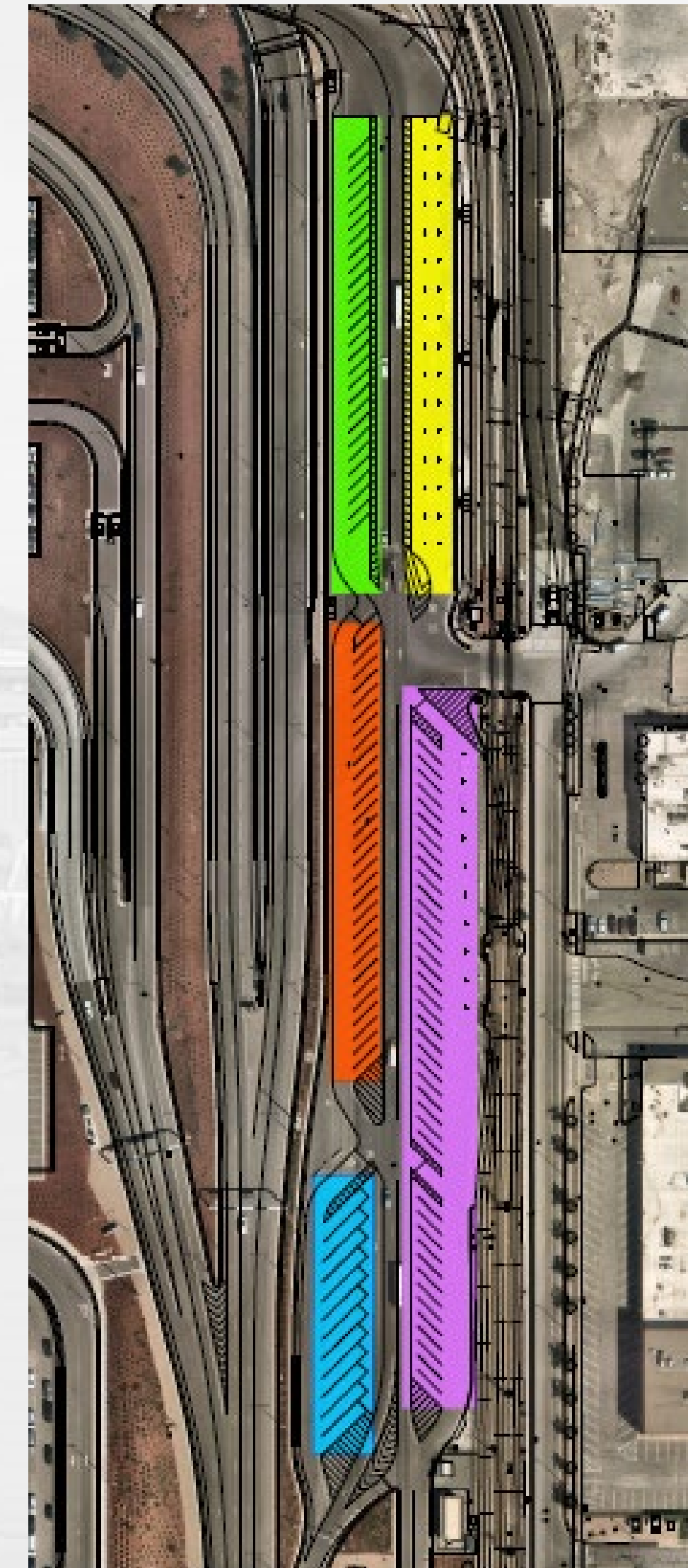
- Terminal Operations Specialists
- Airport Staff – Volunteers
- Airport Ambassadors



Terminal & Landside – Ground Transportation



- Traffic Control
- Staging



Terminal & Landside – Other Ground Transportation



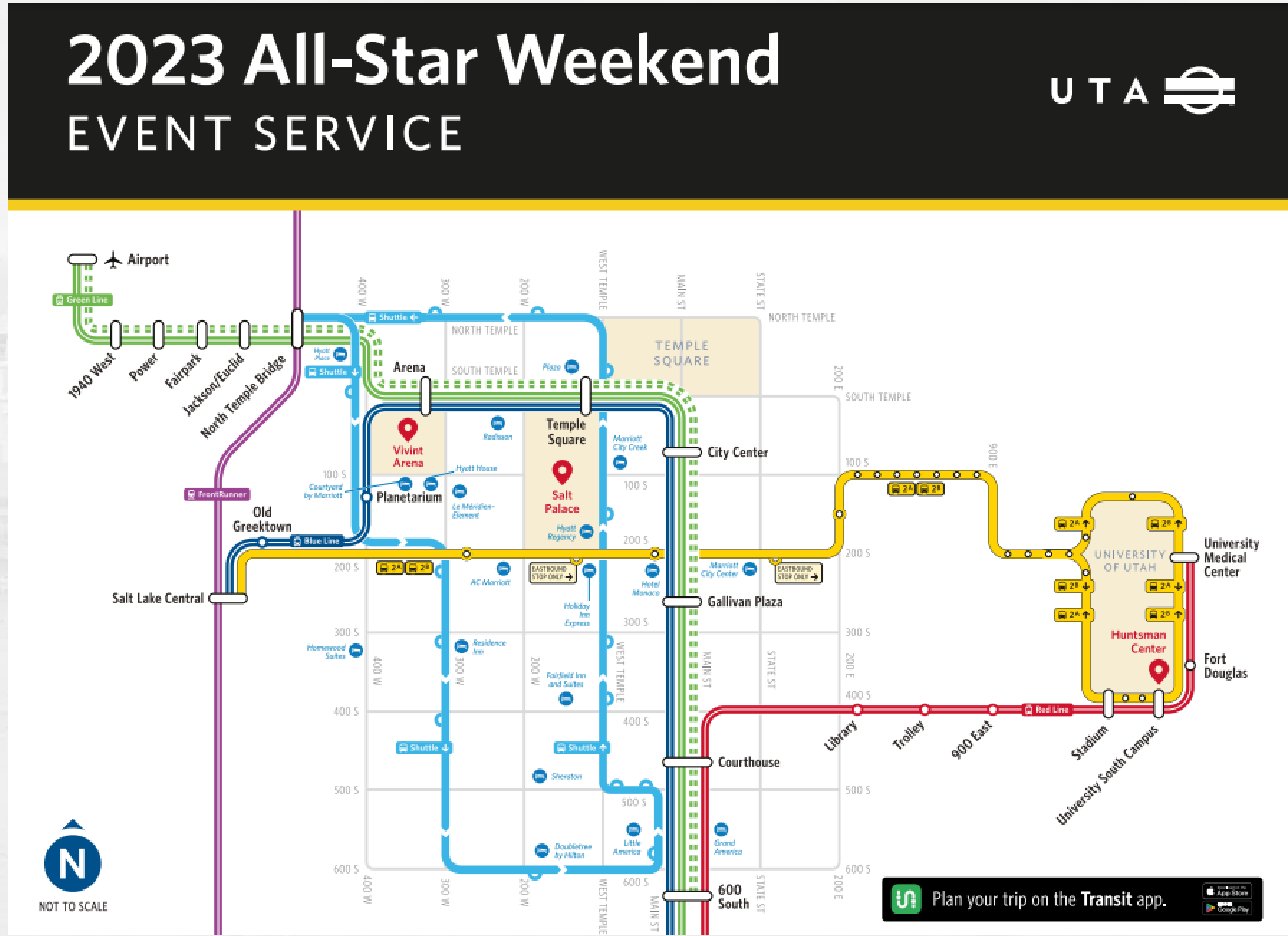
- UTA TRAX Green Line

TRAX Green Line Airport - West Valley Central

February 14-16 Every 15 minutes until approximately 11 pm
 February 17-19 Every 15-30 minutes until approximately 2 am
 February 20 and 21 Every 15 minutes until approximately 11 pm

TRAX Green Line overnight Airport - 600 South

February 14-21 Every 30 minutes until approximately 5-6 am



Terminal & Landside – Rental Car Returns



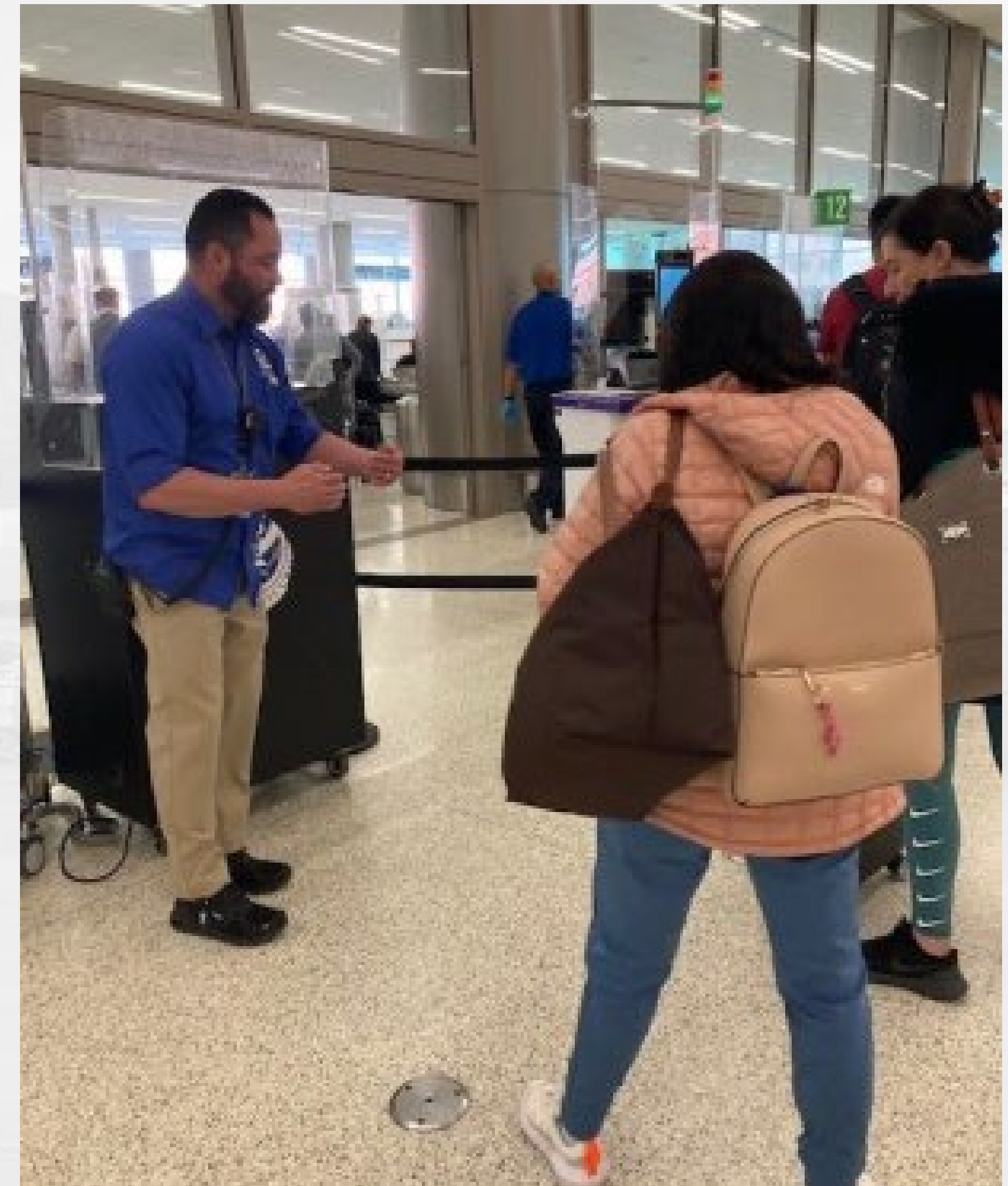
- Monitoring Traffic Flow



Terminal & Landside – Security Checkpoint



- Increased Staffing
- Creating Greater Efficiency



General Aviation – Ramp Activities



- Aircraft Parking
- Vehicle Operations



General Aviation – Aircraft Parking



Airport Weather Impacts

- Deicing Operations
- Snow Removal





Passenger Flow and Baggage Handling System

Maintenance Efforts



Snow

Passenger Flow

Baggage Handling

Passenger flow



People movers

Wayfinding – Volunteers

Baggage Handling System (BHS)



System Details

Baggage Hygiene

Contingency



Advisory Board
Meeting

February 15, 2023

Media Clippings

<https://slairport.com/assets/pdfDocuments/AABoard/February2023ClippingPacket.pdf>

Compiled by the Communication & Marketing Dept.



Advisory Board
Meeting

February 15, 2023

Information

SALT LAKE CITY DEPARTMENT OF AIRPORTS
(An Enterprise Fund of Salt Lake City Corporation)
Statements of Net Position (Unaudited)
(Amounts in Thousands)

<i>As of December 31,</i>	2022	2021
ASSETS		
Current Assets		
Cash and cash equivalents	\$ 304,298	\$ 311,328
Restricted cash and cash equivalents	117,627	473,256
Restricted investments	37,676	30,290
Airline and rental fees receivable	32,705	28,195
Loans receivable	6,507	7,347
Leases receivable	41,099	-
Other assets	7,320	7,153
Total current assets	547,232	857,569
Noncurrent Assets		
Restricted cash and cash equivalents	119,815	186,250
Restricted investments	166,850	129,956
Investments	1	1
Loans receivable	5,863	31,895
Leases receivable	153,530	-
Net pension asset	12,721	-
Other assets	12,158	2,948
Total noncurrent assets and investments	470,938	351,050
Capital assets		
Land	112,474	111,696
Building and improvements	3,481,782	3,445,892
Equipment	344,572	341,458
Construction in progress	947,641	526,871
Total capital assets - at cost	4,886,469	4,425,917
Less accumulated depreciation	1,030,791	912,430
Net capital assets	3,855,678	3,513,487
Total noncurrent assets	4,326,616	3,864,537
Total Assets	4,873,848	4,722,106
Deferred Outflows of Resources	5,511	4,413
Total Assets and Deferred Outflows of Resources	\$ 4,879,359	\$ 4,726,519

SALT LAKE CITY DEPARTMENT OF AIRPORTS
(An Enterprise Fund of Salt Lake City Corporation)
Statements of Net Position (Unaudited)
(Amounts in Thousands)

<i>As of December 31,</i>	2022	2021
LIABILITIES		
Current Liabilities		
Accounts payable	\$ 31,270	\$ 29,865
Accrued compensation	2,339	2,067
Interest payable	67,117	63,899
Other accrued liabilities	20,078	17,864
Current bonds payable	21,920	20,345
Total current liabilities	142,724	134,040
Noncurrent Liabilities		
Revenue bonds payable	3,103,360	3,149,935
Noncurrent compensation liability	4,465	4,360
Net pension liability	-	1,152
Other accrued liabilities	25,797	24,114
Total noncurrent liabilities	3,133,622	3,179,561
Total Liabilities	3,276,346	3,313,601
Deferred Inflows of Resources		
Deferred inflows - revenue collected in advance	6,626	6,592
Deferred inflows - leases	194,629	-
Deferred inflows - pension	16,547	8,944
Total Deferred Inflows of Resources	217,802	15,536
NET POSITION		
Net investment in capital assets	1,133,490	1,125,777
Restricted for		
Capital projects	38,924	37,185
Debt service	298,071	323,659
Unrestricted	(85,274)	(89,239)
Net Position	1,385,211	1,397,382
Total Liabilities, Deferred Inflows of Resources, and Net Position	\$ 4,879,359	\$ 4,726,519

SALT LAKE CITY DEPARTMENT OF AIRPORTS**(An Enterprise fund of Salt Lake City Corporation)****Statements of Revenues, Expenses, and Changes in Fund Net Position (Unaudited)****(Amounts in Thousands)**

<i>for the Six month period ended December,</i>	2022	2021
Operating Revenues		
Airline revenue	\$ 74,512	\$ 82,662
Terminal concessions	906	11,210
Landside concessions	48,195	43,384
Lease revenue	5,215	4,596
General aviation	1,994	1,602
State aviation tax	1,579	1,531
Other revenue	2,781	2,660
Operating revenues	135,182	147,645
Less airline revenue sharing	(7,776)	(6,759)
Total operating revenues	127,406	140,886
Operating Expenses		
Salaries and benefits	29,835	27,469
Materials and supplies	7,984	5,546
Maintenance contracts	9,427	7,906
Charges and services	13,466	12,514
Utilities	3,583	2,877
Inter-governmental	9,483	8,512
Other expenses	5,071	3,201
Total operating expenses before depreciation	78,849	68,025
Operating Income Before Depreciation	48,557	72,861
Depreciation Expense	73,690	98,435
Operating Loss	(25,133)	(25,574)
Non-Operating Revenues (Expenses)		
Passenger facility charges	23,723	24,320
Customer facility charges	6,325	6,006
Interest income	12,472	1,080
Interest expense	(59,051)	(61,174)
Bond issuance costs	-	(4,150)
Contribution of capital assets	-	239
Other revenue (expenses), net	286	3,888
Net non-operating loss	(16,245)	(29,791)
Capital Contributions		
Contributions and grants	16,828	36,525
Total capital contributions	16,828	36,525
Net Position		
Decrease in net position	(24,550)	(18,840)
Net Position, beginning of period	1,409,761	1,416,222
Net Position, end of period	\$ 1,385,211	\$ 1,397,382

SALT LAKE CITY DEPARTMENT OF AIRPORTS

(An Enterprise fund of Salt Lake City Corporation)

OPERATING REVENUES AND EXPENDITURES TO BUDGET (Unaudited)

(Amounts in Thousands)

	Jul 2022 - Dec 2022 ACTUALS	Jul 2022 - Dec 2022 BUDGET	SURPLUS/ DEFICIT	PERCENT CHANGE
Revenues				
Landing Fees	\$ 25,242	\$ 28,795	\$ (3,553)	-12.3%
Fuel Farm	1,032	905	127	14.0%
Aircraft Remain Overnight Fees	203	275	(72)	-26.3%
Cargo Bldg. & Ramp Use Fee	929	981	(52)	-5.3%
Security Charges to TSA	178	170	8	4.5%
Extraordinary Service Charges	28	34	(6)	-16.6%
Passenger Boarding Bridges	893	791	102	12.9%
Tenant Telephone Fees	29	29	(0)	-0.9%
Terminal Rents	45,898	44,009	1,889	4.3%
General Aviation Hangars	531	569	(38)	-6.6%
FBO Hangars/Fuel Oil Royalty	360	393	(33)	-8.5%
Flight Kitchens	1,283	1,165	118	10.1%
Other Buildings & Office Space	2,846	2,967	(121)	-4.1%
Food Service & Vending	1,931	9,377	(7,446)	-79.4%
News/Gift Shop	(1,218)	4,115	(5,333)	-129.6%
Car Rental	16,170	18,064	(1,894)	-10.5%
Leased Site Areas	2,503	2,396	107	4.5%
Auto Parking/Ground Transportation	31,999	29,362	2,637	9.0%
Advertising	193	289	(96)	-33.1%
State Aviation Fuel Tax	1,579	1,612	(33)	-2.0%
Military	100	78	22	27.5%
Glycol Recycling Sales	225	153	72	47.3%
Auxiliary Airport Fuel Sales	1,103	690	413	59.8%
Other	1,145	364	781	214.6%
Less: Airline Revenue Sharing	(7,776)	(7,058)	(718)	10.17%
Total Operating Revenues	127,406	140,525	(13,119)	-9.3%
Expenses				
Salary & Wages	21,056	22,513	1,457	6.5%
Employee Benefits	9,236	10,189	953	9.4%
Maintenance Supplies	4,341	5,122	781	15.2%
Automotive Supplies	2,562	2,004	(558)	-27.9%
Other Supplies	1,080	1,885	805	42.7%
Insurance Premiums	2,673	1,736	(937)	-54.0%
Janitorial Service	6,046	8,069	2,023	25.1%
Maintenance Contracts	3,381	4,163	782	18.8%
Other Contractual Services	6,949	9,072	2,123	23.4%
Professional & Tech Services	6,517	12,469	5,952	47.7%
Utilities	3,583	3,808	225	5.9%
Administrative Service Fee	663	804	141	17.6%
Aircraft Rescue Fire Fighting	3,583	3,583	0	0.0%
Police Services	5,238	5,238	0	0.0%
Other Expenses	2,398	1,187	(1,211)	-102.0%
Contingency Reserve	-	500	500	100.0%
Operating Expenses Before Capitalized Salaries	79,306	92,342	13,036	14.1%
Capitalized Salaries	457	457	-	0.0%
Total Operating Expenses	78,849	91,885	13,036	14.2%
Operating Income	\$ 48,557	\$ 48,640	\$ (83)	-0.2%

SALT LAKE CITY DEPARTMENT OF AIRPORTS

(An Enterprise fund of Salt Lake City Corporation)

OPERATING REVENUES AND EXPENDITURES TO PRIOR YEAR (Unaudited)

(Amounts in Thousands)

	Jul 2022 - Dec 2022	Jul 2021 - Dec 2021	DOLLAR CHANGE	PERCENT CHANGE
Revenues				
Landing Fees	\$ 25,242	\$ 32,086	\$ (6,844)	-21.3%
Fuel Farm	1,032	1,028	4	0.4%
Aircraft Remain Overnight Fees	203	260	(57)	-21.9%
Cargo Bldg. & Ramp Use Fee	929	863	66	7.7%
Security Charges to TSA	178	142	36	25.3%
Extraordinary Service Charges	28	28	(0)	-0.3%
Passenger Boarding Bridges	893	756	137	18.1%
Tenant Telephone Fees	29	30	(1)	-4.9%
Terminal Rents	45,898	46,998	(1,100)	-2.3%
General Aviation Hangars	531	566	(35)	-6.1%
FBO Hangars/Fuel Oil Royalty	360	325	35	10.9%
Flight Kitchens	1,283	1,059	224	21.1%
Other Buildings & Office Space	2,846	2,908	(62)	-2.1%
Food Service & Vending	1,931	6,809	(4,878)	-71.6%
News/Gift Shops	(1,218)	4,076	(5,294)	-129.9%
Car Rental	16,170	17,238	(1,068)	-6.2%
Leased Site Areas	2,503	2,227	276	12.4%
Auto Parking/Ground Transportation	31,999	26,122	5,877	22.5%
Advertising	193	326	(133)	-40.9%
State Aviation Fuel Tax	1,579	1,531	48	3.1%
Military	100	100	-	0.0%
Glycol Recycling Sales	225	158	67	42.2%
Auxiliary Airport Fuel Sales	1,103	711	392	55.1%
Other	1,145	1,298	(153)	-11.8%
Less: Airline Revenue Sharing	(7,776)	(6,759)	(1,017)	15.0%
Operating Revenues	127,406	140,886	(13,480)	-9.6%
Expenses				
Salary & Wages	\$ 21,056	\$ 19,239	\$ 1,817	9.4%
Employee Benefits	9,236	8,823	413	4.7%
Maintenance Supplies	4,341	3,290	1,051	32.0%
Automotive Supplies	2,562	1,647	915	55.5%
Other Supplies	1,080	609	471	77.4%
Insurance Premiums	2,673	2,539	134	5.3%
Janitorial Service	6,046	5,051	995	19.7%
Maintenance Contracts	3,381	2,856	525	18.4%
Other Contractual Services	6,949	5,320	1,629	30.6%
Professional & Tech Service	6,517	7,194	(677)	-9.4%
Utilities	3,583	2,877	706	24.6%
Administrative Service Fee	663	1,318	(655)	-49.7%
Aircraft Rescue Fire Fighting	3,583	2,920	663	22.7%
Police Services	5,238	4,275	963	22.5%
Other Expenses	2,398	663	1,735	261.8%
Operating Expenses Before Capitalized Salaries	79,306	68,621	10,685	15.6%
Capitalized Salaries	457	596	(139)	-23.4%
Total Operating Expenses	78,849	68,025	10,824	15.9%
Operating Income	\$ 48,557	\$ 72,861	\$ (24,304)	-33.4%

SALT LAKE CITY DEPARTMENT OF AIRPORTS
(An Enterprise fund of Salt Lake City Corporation)
Statements of Cash Flows (Unaudited)
(Amounts in Thousands)

<i>for the month ended December 31,</i>	2022	2021
Cash Flows from Operating Activities		
Cash received from providing services	\$ 122,054	\$ 150,960
Cash paid for services for intra-governmental charges	(15,169)	(2,207)
Cash paid to suppliers	(33,730)	(43,597)
Cash paid to employees	(29,214)	(27,027)
Net cash from operating activities	43,941	78,128
Cash Flows from Investing Activities		
Cash paid for investments	(22,872)	(192,474)
Cash proceeds from investments	19,152	130,074
Interest received on investments and concession loans	10,177	796
Payments for concession loans	(104)	(1,345)
Payments received on concession loans	2,480	7,350
Net cash from investing activities	8,833	(55,599)
Cash Flows from Capital and Related Financing Activities		
Purchase of capital equipment	(2,187)	(1,856)
Payments for acquisition and construction of capital assets	(241,836)	(253,283)
Principal paid on revenue bonds	(21,920)	-
Proceeds from issuance of revenue bonds payable	-	1,139,949
Payment for capital assets contributed to TSA	-	(239)
Payment on line of credit	-	(268,094)
Interest paid on bonds and line of credit	(68,723)	(46,389)
Bond issuance costs	-	(1,418)
Interest received from leases	2,610	-
Passenger facility charges	23,286	24,693
Customer facility charges	8,281	7,486
Proceeds from sale of capital assets and equipment	286	70
Contributions and grants	22,148	54,593
Net cash used for capital and related financing activities	(278,055)	655,512
Net (Decrease) in Cash and Cash Equivalents	(225,282)	678,041
Cash and Cash Equivalents - Beginning of Year	767,021	292,793
Cash and Cash Equivalents - End of Year	\$ 541,740	\$ 970,834

SALT LAKE CITY DEPARTMENT OF AIRPORTS
(An Enterprise fund of Salt Lake City Corporation)
Statements of Cash Flows (Unaudited)
(Amounts in Thousands)

<i>for the Six month period ended December,</i>	2022	2021
Reconciliation of Operating Income to Net		
Cash from Operating Activities		
Operating loss	\$ (25,133)	\$ (25,574)
Adjustments to reconcile operating loss to net cash from operating activities		
Depreciation	73,690	98,435
Pension benefit	-	-
Changes in assets and liabilities		
Airline and rental fee receivable	6,308	19,197
Other assets	(76)	832
Accounts payable	(4,105)	(12,205)
Other accrued liabilities	(6,854)	(1,942)
Deferred inflows	70	(686)
Deposits and advance rentals	40	71
Net cash from operating activities	43,941	78,128
Schedule of Non-cash Activities		
Contributions and grants	(5,320)	(18,067)
Passenger facility charges (includes interest)	(2,811)	(3,843)
Customer facility charges (includes interest)	(3,074)	(2,465)
Bond issuance costs	-	(3,361)
Contributions of capital assets	-	(239)
Total Noncash Activities	\$ (11,205)	\$ (27,976)

CONSTRUCTION REPORT

TABLE OF CONTENTS

- I. Area Map of Project Locations
- II. Project Schedule
- III. Construction Analysis
- IV. Construction Report

SALT LAKE CITY DEPARTMENT OF AIRPORTS
February 8, 2023



2022 - 2023 Project Legend

Airfield

1. North Cargo Apron Site Development
2. Pump House #5 Renovations
3. Taxiway E Reconstruction F1-F2

Landside

4. Gateway Building Restroom Renovations
5. Gate 39 Reconstruction
6. Electrical & Communication Duct Bank AOC to Gate 7
7. Gateway Sustainability Display



SALT LAKE CITY INTERNATIONAL AIRPORT
CONSTRUCTION PROGRAM
2022/2023 Construction Schedule

ID	Task Name	Start	Finish	Oct '22	Nov '22	Dec '22	Jan '23	Feb '23	Mar '23	Apr '23	May '23	J
1	Project Title	Mon 3/7/22	Wed 11/1/23									
2	(1) North Cargo Apron Site Development	Mon 4/4/22	Fri 4/28/23									
3	(2) Pump House No. 5 Renovations	Mon 3/7/22	Fri 7/28/23									
4	(3) Taxiway E Reconstruction F1-F2	Thu 6/15/23	Wed 11/1/23									
5	(4) Gateway Building Restroom Renovations	Tue 3/22/22	Mon 5/22/23									
6	(5) Gate 39 Reconstruction	Tue 7/26/22	Thu 1/12/23									
7	(6) Electrical & Communication Duct Bank from AOC to Gate 7	Mon 4/10/23	Tue 9/5/23									
8	(7) Gateway Sustainability Display	Fri 1/13/23	Wed 9/13/23									
9	(8) TVY Runway & Taxiway Rehabilitation	Mon 8/1/22	Sat 4/15/23									

Project: Microsoft Project (latest)
Date: Wed 2/8/23

CONSTRUCTION

**SALT LAKE CITY DEPARTMENT OF AIRPORTS
CONSTRUCTION PROJECT STATUS 2022 - 2023**

#	PROJECT NAME	ENGINEER'S ESTIMATE	BID AMOUNT	APPROVED CHANGE ORDERS TO DATE	% OF COST INCREASE TO DATE	STATUS	CONTRACTOR
CONSTRUCTION							
1	North Cargo Apron Site Development	\$ 25,763,000	\$ 22,141,148	\$ (12)	0.00%	on schedule	Ames Construction
2	Pump House No. 5 Renovations	\$ 841,630	\$ 1,630,000	\$ 2,262	0.14%	on schedule	Saunders Construction
3	Taxiway E Reconstruction F1-F2	\$ 6,658,691	\$ 6,731,600			on schedule	Ames Construction
4	Gateway Building Restroom Renovations	\$ 405,898	\$ 403,636	\$ 107,765	26.70%	on schedule	Paulsen Construction
5	Gate 39 Reconstruction	\$ 1,841,505	\$ 2,127,962			complete	Cal Wadsworth Construction
6	Electrical & Communications Duct Bank AOC to Gate 7	\$ 3,371,053	\$ 3,517,988			on schedule	Americom Technology LLC
7	Gateway Sustainability Display	\$ 190,000	\$ 223,950			on schedule	Paulsen Construction
8	TVY Runway & Taxiway Rehabilitation	\$ 3,355,248	\$ 3,386,851	\$ 186,025	5.49%	on schedule	Granite Construction
	Total	\$ 42,427,025	\$ 40,163,135	\$ 296,040	0.74%		
Budget amount, Engineer's estimate, and Bid amount is based on construction cost only.							

CONSTRUCTION REPORT

CONSTRUCTION

- (1) **North Cargo Apron Site Development** - The sanitary sewer lift station construction and light pole installation continues at 1580 North and 4000 West. The remainder of the construction work for this project is in winter shutdown.
- (2) **Pump House No. 5 Renovation** - This project is in winter shutdown. Pump House 5 will be temporarily closed in the Spring for four weeks to complete the work. The agitator piping and pump will be completed during the closure time.
- (3) **Taxiway E Reconstruction F1-F2** - The bid opening for this project was held on January 19, 2023. The apparent low bidder is Ames Construction. Contract documents are currently being prepared. Estimated construction start date is July 1, 2023.
- (4) **Gateway Building Restroom Renovations** - Finishing touches to the eastside restrooms are underway. A final walk through will take place on February 8, 2023. The restrooms will be open to the public on Friday, February 10, 2023. The westside restroom work will begin on February 22, 2023.
- (5) **Gate 39 Reconstruction** - A final walk through for this project was conducted on January 12, 2023. The gate opened on January 15, 2023. Painting and concrete work will take place in Spring 2023 when weather permits.
- (6) **Electrical & Communication Duct Bank from AOC to Gate 7** - The bid opening for this project was held on January 26, 2023. The apparent low bidder is Americom Technology LLC. Contract documents are currently being prepared.
- (7) **Gateway Sustainability Display** - A notice to proceed was issued for this project on January 13, 2023. The Contractor is currently preparing shop drawings and product samples for review and approval by SLCDA. Estimated construction start date is August 1, 2023.
- (8) **TVY Runway and Taxiway Rehabilitation** - Installation of the airfield lighting regulators and associated software updates will be performed by ADB in March 2023. The Contractor will apply permanent paint as weather permits, tentatively anticipated for April 2023.



**SALT LAKE CITY INTERNATIONAL AIRPORT
AIR TRAFFIC STATISTICS AND ACTIVITY REPORT
TWELVE MONTHS ENDED DECEMBER 2022**

	December 2022	CHANGE	Year to date 2022	CHANGE	12 MO ROLLING Ending 12/2022	CHANGE
PASSENGERS						
<i>DOMESTIC</i>						
Enplaned - Local	717,876	7.64%	8,520,803	20.88%	8,520,803	20.88%
Enplaned - Connections	303,637	-10.42%	4,349,968	5.18%	4,349,968	5.18%
Less International Enplaned	-51,664		-590,175		-590,175	
	969,849	-0.28%	12,280,596	12.73%	12,280,596	12.73%
Deplaned - Local	761,234	9.85%	8,532,044	20.76%	8,532,044	20.76%
Deplaned - Connection	303,637	-10.42%	4,349,968	5.18%	4,349,968	5.18%
Less International Deplaned	-50,498		-603,460		-603,460	
	1,014,373	1.44%	12,278,552	12.56%	12,278,552	12.56%
TOTAL DOMESTIC	1,984,222	0.59%	24,559,148	12.65%	24,559,148	12.65%
<i>INTERNATIONAL</i>						
Enplaned	51,664	55.23%	590,175	103.04%	590,175	103.04%
Deplaned	50,498	57.74%	603,460	105.94%	603,460	105.94%
TOTAL INTERNATIONAL	102,162	56.46%	1,193,635	104.50%	1,193,635	104.50%
TOTAL PASSENGERS	2,086,384	2.38%	25,752,783	15.04%	25,752,783	15.04%
LANDED WEIGHT						
Air Carriers	1,157,130,896	-0.54%	14,163,181,870	-3.11%	14,163,181,870	-3.11%
Cargo Carriers	139,638,492	-18.79%	1,265,729,723	-4.91%	1,265,729,723	-4.91%
TOTAL LANDED WEIGHT (LBS)	1,296,769,388	-2.89%	15,428,911,593	-3.26%	15,428,911,593	-3.26%
MAIL						
Enplaned	1,832,355	-11.85%	30,706,397	-8.80%	30,706,397	-8.80%
Deplaned	1,387,331	-8.74%	18,130,391	7.27%	18,130,391	7.27%
TOTAL MAIL (LBS)	3,219,686	-10.54%	48,836,788	-3.43%	48,836,788	-3.43%
CARGO						
Enplaned	19,458,703	-8.71%	189,742,789	-8.75%	189,742,789	-8.75%
Deplaned	19,638,899	-10.52%	201,212,667	-1.66%	201,212,667	-1.66%
TOTAL CARGO (LBS)	39,097,602	-9.63%	390,955,456	-5.23%	390,955,456	-5.23%
MAIL & CARGO						
Enplaned	9,729	-8.72%	94,871	-8.75%	94,871	-8.75%
Deplaned	9,819	-10.52%	100,606	-1.66%	100,606	-1.66%
TOTAL MAIL & CARGO (TONS)	19,548	-9.63%	195,477	-5.23%	195,477	-5.23%
AIRCRAFT OPERATIONS						
Passenger Aircraft	18,454	-5.51%	232,450	-6.65%	232,450	-6.65%
All-Cargo Aircraft	1,774	-22.53%	18,686	-10.27%	18,686	-10.27%
General Aviation	5,723	-5.23%	67,832	-2.88%	67,832	-2.88%
Military	151	-13.22%	3,043	7.34%	3,043	7.34%
TOTAL AIRCRAFT OPERATIONS	26,102	-6.89%	322,011	-5.99%	322,011	-5.99%

**SALT LAKE CITY INTERNATIONAL AIRPORT
PASSENGER TRAFFIC REPORT
TWELVE MONTHS ENDED DECEMBER 2022**

	December 2021	December 2022	% CHANGE	Year to date 2021	Year to date 2022	% CHANGE	12 MO ROLLING Ending 12/2022	% CHANGE
ENPLANED PASSENGERS								
AEROMEXICO	2,876	2,727	-5.2%	5,692	31,242	448.9%	31,242	448.9%
AIR CANADA	-	945	100.0%	-	7,569	100.0%	7,569	100.0%
ALASKA	10,062	12,038	19.6%	111,955	138,713	23.9%	138,713	23.9%
Horizon Air / Alaska	1,119	-	-100.0%	28,100	8,609	-69.4%	8,609	-69.4%
Skywest / Alaska	11,708	6,564	-43.9%	142,016	141,355	-0.5%	141,355	-0.5%
AMERICAN	47,759	54,870	14.9%	564,912	544,648	-3.6%	544,648	-3.6%
Envoy Air	1,940	-	-100.0%	25,750	4,990	-80.6%	4,990	-80.6%
American/Mesa Air	159	-	-100.0%	10,842	13,607	25.5%	13,607	25.5%
Republic	-	-	0.0%	5,201	-	-100.0%	-	-100.0%
SkyWest (American)	6,712	-	-100.0%	93,333	43,437	-53.5%	43,437	-53.5%
DELTA	580,077	611,106	5.3%	6,213,734	7,539,892	21.3%	7,539,892	21.3%
SkyWest (Delta Connection)	159,468	125,290	-21.4%	1,927,118	1,804,403	-6.4%	1,804,403	-6.4%
EUROWINGS DISCOVER	-	-	0.0%	-	10,654	100.0%	10,654	100.0%
FRONTIER	16,548	19,817	19.8%	232,167	198,710	-14.4%	198,710	-14.4%
JETBLUE	17,365	23,467	35.1%	195,084	283,837	45.5%	283,837	45.5%
KLM ROYAL DUTCH AIRLINES	-	-	0.0%	-	29,944	100.0%	29,944	100.0%
SOUTHWEST	106,250	98,898	-6.9%	1,124,163	1,352,504	20.3%	1,352,504	20.3%
SPIRIT	-	14,141	100.0%	-	123,471	100.0%	123,471	100.0%
UNITED	14,917	28,045	88.0%	189,873	258,959	36.4%	258,959	36.4%
Mesa Airlines (United Express)	952	-	-100.0%	10,115	17,394	72.0%	17,394	72.0%
Republic Airways (United)	435	-	-100.0%	4,194	345	-91.8%	345	-91.8%
SkyWest (United Express)	27,539	23,605	-14.3%	300,266	313,734	4.5%	313,734	4.5%
Charters	-	-	0.0%	227	2,754	1113.2%	2,754	1113.2%
West Coast Charters	-	0	0.0%	-	0	0.0%	0	0.0%
TOTAL ENPLANED PASSENGERS	1,005,886	1,021,513	1.6%	11,184,742	12,870,771	15.1%	12,870,771	15.1%
AeroMexico	3,437	3,185	-7.3%	6,637	41,750	529.0%	41,750	529.0%
AIR CANADA	-	950	100.0%	-	7,809	100.0%	7,809	100.0%
ALASKA AIR	9,985	12,432	24.5%	114,228	141,355	23.7%	141,355	23.7%
Horizon Air / Alaska	1,035	-	-100.0%	28,176	8,519	-69.8%	8,519	-69.8%
Skywest / Alaska	12,741	6,896	-45.9%	141,797	138,575	-2.3%	138,575	-2.3%
AMERICAN	49,198	56,636	15.1%	568,968	538,911	-5.3%	538,911	-5.3%
Envoy Air (American)	1,831	-	-100.0%	25,152	5,744	-77.2%	5,744	-77.2%
Mesa Air	159	-	-100.0%	10,541	14,154	34.3%	14,154	34.3%
Republic	-	-	0.0%	4,901	-	-100.0%	-	-100.0%
SkyWest (American)	6,816	-	-100.0%	93,543	43,199	-53.8%	43,199	-53.8%
DELTA	598,888	645,170	7.7%	6,220,143	7,536,214	21.2%	7,536,214	21.2%
SkyWest (Delta Connection)	158,744	127,026	-20.0%	1,925,777	1,820,595	-5.5%	1,820,595	-5.5%
EUROWINGS DISCOVER	-	-	0.0%	-	11,773	100.0%	11,773	100.0%
FRONTIER	16,892	20,055	18.7%	234,120	198,371	-15.3%	198,371	-15.3%
JETBLUE	18,371	24,454	33.1%	192,056	278,083	44.8%	278,083	44.8%
KLM ROYAL DUTCH AIRLINES	-	-	0.0%	-	36,239	100.0%	36,239	100.0%
SOUTHWEST	108,185	100,985	-6.7%	1,116,846	1,342,491	20.2%	1,342,491	20.2%
SPIRIT	-	14,468	100.0%	-	124,924	100.0%	124,924	100.0%
UNITED	15,196	29,114	91.6%	192,917	257,639	33.5%	257,639	33.5%
Mesa Airlines / United Express	959	-	-100.0%	11,555	18,709	61.9%	18,709	61.9%
Republic Airways (United)	383	-	-100.0%	4,019	317	-92.1%	317	-92.1%
SkyWest (United Express)	29,127	23,500	-19.3%	309,394	313,280	1.3%	313,280	1.3%
Charters	1	-	-100.0%	353	3,361	852.1%	3,361	852.1%
West Coast Charters	-	-	0.0%	-	0	0.0%	0	0.0%
TOTAL DEPLANED PASSENGERS	1,031,948	1,064,871	3.2%	11,201,123	12,882,012	15.0%	12,882,012	15.0%
TOTAL PASSENGERS*	2,037,834	2,086,384	2.4%	22,385,865	25,752,783	15.0%	25,752,783	15.0%
INTERNATIONAL - ENPLANED								
AEROMEXICO	2,876	2,727	-5.2%	5,692	31,242	448.9%	31,242	448.9%
AIR CANADA	-	945	100.0%	-	7,569	100.0%	7,569	100.0%
DELTA	28,583	46,961	64.3%	280,700	492,237	75.4%	492,237	75.4%
SkyWest (Delta Connection)	1,823	1,031	-43.4%	4,269	18,429	331.7%	18,429	331.7%
EUROWINGS DISCOVER	-	-	0.0%	-	10,654	100.0%	10,654	100.0%
KLM ROYAL DUTCH AIRLINES	-	-	0.0%	-	29,944	100.0%	29,944	100.0%
Charters	-	-	0.0%	-	98	100.0%	98	100.0%
TOTAL ENPLANED INTERNATIONAL	33,282	51,664	55.2%	290,661	590,173	103.0%	590,173	103.0%
AEROMEXICO	3,437	3,185	-7.3%	6,637	41,750	529.0%	41,750	529.0%
AIR CANADA	-	950	100.0%	-	7,809	100.0%	7,809	100.0%
DELTA	26,972	45,301	68.0%	282,112	484,137	71.6%	484,137	71.6%
SkyWest (Delta Connection)	1,605	1,062	-33.8%	4,280	21,614	405.0%	21,614	405.0%
EUROWINGS DISCOVER	-	-	0.0%	-	11,773	100.0%	11,773	100.0%
KLM ROYAL DUTCH AIRLINES	-	-	0.0%	-	36,239	100.0%	36,239	100.0%
Charters	-	-	0.0%	-	136	100.0%	136	100.0%
TOTAL DEPLANED INTERNATIONAL	32,014	50,498	57.7%	293,029	603,458	105.9%	603,458	105.9%
TOTAL INTERNATIONAL PASSENGERS	65,296	102,162	56.5%	583,690	1,193,631	104.5%	1,193,631	104.5%

*Includes International

**SALT LAKE CITY INTERNATIONAL AIRPORT
TWELVE MONTHS ENDED DECEMBER 2022
Based on Total Enplanements**

MARKET SHARE

	December 2021	MARKET SHARE	December 2022	MARKET SHARE	Year to date 2021	MARKET SHARE	Year to date 2022	MARKET SHARE	12 MO ROLLING Ending 12/2021	12 MO ROLLING Ending 12/2022	MARKET SHARE
AEROMEXICO	2,876	0.29%	2,727	0.27%	5,692	0.05%	31,242	0.24%	5,692	31,242	0.24%
ALASKA	22,889	2.28%	18,602	1.82%	282,071	2.52%	288,677	2.24%	282,071	288,677	2.24%
AMERICAN	56,570	5.62%	54,870	5.37%	700,038	6.26%	606,682	4.71%	700,038	606,682	4.71%
DELTA	739,545	73.52%	736,396	72.09%	8,140,852	72.79%	9,344,295	72.60%	8,140,852	9,344,295	72.60%
EUROWINGS DISCOVER	-	0.00%	-	0.00%	-	0.00%	10,654	0.08%	-	10,654	0.08%
FRONTIER	16,548	1.65%	19,817	1.94%	232,167	2.08%	198,710	1.54%	232,167	198,710	1.54%
JETBLUE	17,365	1.73%	23,467	2.30%	195,084	1.74%	283,837	2.21%	195,084	283,837	2.21%
KLM ROYAL DUTCH	-	0.00%	-	0.00%	-	0.00%	29,944	0.23%	-	29,944	0.23%
SOUTHWEST	106,250	10.56%	98,898	9.68%	1,124,163	10.05%	1,352,504	10.51%	1,124,163	1,352,504	10.51%
SPIRIT	-	0.00%	14,141	1.38%	-	0.00%	123,471	0.96%	-	123,471	0.96%
UNITED	43,843	4.36%	51,650	5.06%	504,448	4.51%	590,432	4.59%	504,448	590,432	4.59%
Charters	-	0.00%	-	0.00%	227	0.00%	2,754	0.02%	227	2,754	0.02%
TOTAL ENPLANEMENTS	1,005,886	100%	1,021,513	100%	11,184,742	100%	12,870,771	100%	11,184,742	12,870,771	100%

PERCENT CHANGE YOY

	December 2021	December 2022	PERCENT CHANGE	YTD 2021	YTD 2022	PERCENT CHANGE	12 MO ROLLING Ending 12/2021	12 MO ROLLING Ending 12/2022	PERCENT CHANGE
AEROMEXICO	2,876	2,727	100.00%	5,692	31,242	100.00%	5,692	31,242	100.00%
ALASKA	22,889	18,602	-18.73%	282,071	288,677	2.34%	282,071	288,677	2.34%
AMERICAN	56,570	54,870	-3.01%	700,038	606,682	-13.34%	700,038	606,682	-13.34%
DELTA	739,545	736,396	-0.43%	8,140,852	9,344,295	14.78%	8,140,852	9,344,295	14.78%
EUROWINGS DISCOVER	-	-	100.00%	-	10,654	100.00%	-	10,654	100.00%
FRONTIER	16,548	19,817	19.75%	232,167	198,710	-14.41%	232,167	198,710	-14.41%
JETBLUE	17,365	23,467	35.14%	195,084	283,837	45.49%	195,084	283,837	45.49%
KLM ROYAL DUTCH	-	-	0.00%	-	29,944	0.00%	-	29,944	100.00%
SOUTHWEST	106,250	98,898	-6.92%	1,124,163	1,352,504	20.31%	1,124,163	1,352,504	20.31%
SPIRIT	-	14,141	100.00%	-	123,471	100.00%	-	123,471	100.00%
UNITED	43,843	51,650	17.81%	504,448	590,432	17.05%	504,448	590,432	17.05%
Charters	-	-	#DIV/0!	227	2,754	1113.22%	227	2,754	1113.22%
TOTAL ENPLANEMENTS	1,005,886	1,021,513	1.6%	11,184,742	12,870,771	15.1%	11,184,742	12,870,771	15.1%

**SALT LAKE CITY INTERNATIONAL AIRPORT
LANDING ACTIVITY
TWELVE MONTHS ENDED DECEMBER 2022**

	December 2021	December 2022	CHANGE	Year to date 2021	Year to date 2022	CHANGE	12 MO ROLLING Ending 12/2022	% CHANGE
TOTAL NUMBER OF LANDINGS								
SCHEDULED CARRIERS								
AEROMEXICO	31	31	0.0%	61	363	495.1%	363	495.1%
AIR CANADA	-	13	100.0%	-	91	100.0%	91	100.0%
ALASKA	87	91	4.6%	939	1,028	9.5%	1,028	9.5%
Horizon Air / Alaska	15	-	-100.0%	471	121	-74.3%	121	-74.3%
Skywest / Alaska	197	101	-48.7%	2,549	2,159	-15.3%	2,159	-15.3%
AMERICAN	300	389	29.7%	3,977	3,375	-15.1%	3,375	-15.1%
Mesa Air (American)	2	-	-100.0%	167	189	13.2%	189	13.2%
Envoy Air (American)	28	-	-100.0%	377	86	-77.2%	86	-77.2%
Republic/ (American)	-	-	0.0%	37	-	-100.0%	-	-100.0%
SkyWest (American)	109	-	-100.0%	1,763	718	-59.3%	718	-59.3%
DELTA	4,180	4,340	3.8%	50,454	51,890	2.8%	51,890	2.8%
SkyWest (Delta Connection)	2,792	2,156	-22.8%	40,437	31,122	-23.0%	31,122	-23.0%
EUROWINGS DISCOVER	-	-	0.0%	-	47	100.0%	47	100.0%
FRONTIER	105	121	15.2%	1,642	1,269	-22.7%	1,269	-22.7%
JETBLUE	137	167	21.9%	1,696	1,888	11.3%	1,888	11.3%
KLM ROYAL DUTCH AIRLINES	-	-	0.0%	-	91	100.0%	91	100.0%
SOUTHWEST	825	827	0.2%	9,512	10,622	11.7%	10,622	11.7%
SPIRIT	-	93	100.0%	-	816	100.0%	816	100.0%
UNITED	108	200	85.2%	1,607	1,870	16.4%	1,870	16.4%
Mesa / United Express	13	-	-100.0%	293	263	-10.2%	263	-10.2%
Republic Airways Holdings	6	-	-100.0%	63	5	-92.1%	5	-92.1%
SkyWest (United Express)	478	373	-22.0%	5,377	4,893	-9.0%	4,893	-9.0%
Trans States	-	-	0.0%	-	-	0.0%	-	0.0%
SUBTOTAL SCHEDULED CARRIERS:	9,413	8,902	-5.4%	121,422	112,906	-7.0%	112,906	-7.0%
CHARTER CARRIERS								
ALLEGiant AIR	-	-	0.0%	-	12	100.0%	12	100.0%
BOMBARDIER BUSINESS JETS	76	48	-36.8%	679	715	5.3%	715	5.3%
BOUTIQUE AIR	-	-	0.0%	-	-	0.0%	-	0.0%
DELTA PRIVATE JETS	-	-	0.0%	-	-	0.0%	-	0.0%
EXECUTIVE JET MANAGEMENT	-	-	0.0%	-	-	0.0%	-	0.0%
FLIGHT OPTIONS	-	-	0.0%	-	-	0.0%	-	0.0%
KALITTA CHARTERS	7	-	-100.0%	87	23	-73.6%	23	-73.6%
KEYLIME AIR	-	-	0.0%	4	10	150.0%	10	150.0%
NETJETS	234	259	10.7%	2,196	2,246	2.3%	2,246	2.3%
SUNSET AVIATION	-	-	0.0%	-	-	0.0%	-	0.0%
SWIFT AIR	-	-	0.0%	-	-	0.0%	-	0.0%
SUN COUNTRY	-	-	0.0%	-	38	100.0%	38	100.0%
XOJET	39	14	-64.1%	196	265	35.2%	265	35.2%
OTHER CHARTER	1	-	-100.0%	4	2	-50.0%	2	-50.0%
SUBTOTAL CHARTER CARRIERS:	357	321	-10.1%	3,166	3,311	4.6%	3,311	4.6%
CARGO CARRIERS								
AERO CHARTER & TRANSPORT	-	-	0.0%	-	-	0.0%	-	0.0%
AIRNET 11 LLC	8	10	25.0%	61	64	4.9%	64	4.9%
ALPINE AVIATION	245	217	-11.4%	2,307	2,448	6.1%	2,448	6.1%
AMERIFLIGHT	24	20	-16.7%	993	269	-72.9%	269	-72.9%
AMERIJET INTERTIONAL	17	18	5.9%	29	183	531.0%	183	531.0%
CORPORATE AIR (BILLINGS)	156	134	-14.1%	1,667	1,526	-8.5%	1,526	-8.5%
EMPIRE	21	19	-9.5%	217	206	-5.1%	206	-5.1%
FEDERAL EXPRESS	203	167	-17.7%	1,824	1,697	-7.0%	1,697	-7.0%
GEM AIR	131	34	-74.0%	763	602	-21.1%	602	-21.1%
NORTHERN AIR CARGO	26	23	-11.5%	170	299	75.9%	299	75.9%
SOUTHERN AIR	-	-	0.0%	-	-	0.0%	-	0.0%
UPS	250	211	-15.6%	1,942	1,703	-12.3%	1,703	-12.3%
WESTERN AIR EXPRESS	53	26	-50.9%	344	288	-16.3%	288	-16.3%
OTHER CARGO	6	12	100.0%	16	66	312.5%	66	312.5%
SUBTOTAL CARGO CARRIERS:	1,140	891	-21.8%	10,333	9,351	-9.5%	9,351	-9.5%
TOTAL LANDINGS	10,910	10,114	-7.3%	134,921	125,568	-6.9%	125,568	-6.9%
TOTAL LANDED WEIGHT								
SCHEDULED CARRIERS								
AEROMEXICO	2,938,738	2,938,738	0.0%	5,782,678	34,411,674	495.1%	34,411,674	495.1%
AIR CANADA	-	2,002,000	100.0%	-	13,986,000	100.0%	13,986,000	100.0%
ALASKA	13,534,014	13,789,404	1.9%	143,035,508	154,504,050	8.0%	154,504,050	8.0%
Horizon Air / Alaska	1,124,355	-	-100.0%	35,304,747	9,069,797	-74.3%	9,069,797	-74.3%
Skywest / Alaska	14,766,529	7,570,657	-48.7%	191,065,393	161,832,163	-15.3%	161,832,163	-15.3%
AMERICAN	47,306,982	57,493,154	21.5%	643,678,528	534,554,534	-17.0%	534,554,534	-17.0%
Envoy Air (American)	2,098,600	-	-100.0%	28,250,870	6,440,420	-77.2%	6,440,420	-77.2%
American/Mesa Air	147,000	-	-100.0%	12,356,100	14,064,300	13.8%	14,064,300	13.8%
Republic (American)	-	-	0.0%	2,773,150	-	-100.0%	-	-100.0%
SkyWest (American)	7,390,450	-	-100.0%	119,413,950	48,586,850	-59.3%	48,586,850	-59.3%
DELTA	677,172,850	685,665,756	1.3%	8,249,645,183	8,217,907,672	-0.4%	8,217,907,672	-0.4%
SkyWest (Delta Connection)	188,926,744	153,704,031	-18.6%	2,686,260,383	2,151,423,056	-19.9%	2,151,423,056	-19.9%
EUROWINGS DISCOVER	-	-	0.0%	-	19,192,800	100.0%	19,192,800	100.0%
FRONTIER	16,631,350	17,469,838	5.0%	244,764,942	185,844,142	-24.1%	185,844,142	-24.1%
JETBLUE	19,481,400	23,747,400	21.9%	241,171,200	268,473,600	11.3%	268,473,600	11.3%

**SALT LAKE CITY INTERNATIONAL AIRPORT
LANDING ACTIVITY
TWELVE MONTHS ENDED DECEMBER 2022**

	December 2021	December 2022	CHANGE	Year to date 2021	Year to date 2022	CHANGE	12 MO ROLLING Ending 12/2022	% CHANGE
KLM ROYAL DUTCH AIRLINES	-	-	0.0%	-	38,864,180	100.0%	38,864,180	100.0%
SOUTHWEST	111,905,600	113,944,300	1.8%	1,285,732,800	1,445,577,500	12.4%	1,445,577,500	12.4%
SPIRIT	-	13,224,414	100.0%	-	116,033,568	100.0%	116,033,568	100.0%
UNITED	15,528,820	29,024,200	86.9%	227,326,060	270,536,400	19.0%	270,536,400	19.0%
Mesa / United Express	975,000	-	-100.0%	21,975,000	19,725,000	-10.2%	19,725,000	-10.2%
Republic Airways Holdings	444,600	-	-100.0%	4,667,961	364,200	-92.2%	364,200	-92.2%
SkyWest (United Express)	31,091,379	26,153,153	-15.9%	374,799,688	339,144,368	-9.5%	339,144,368	-9.5%
Trans States	-	-	0.0%	-	-	0.0%	-	0.0%
SUBTOTAL SCHEDULED CARRIERS:	1,151,464,411	1,146,727,045	-0.4%	14,518,004,141	14,050,536,274	-3.2%	14,050,536,274	-3.2%
CHARTER CARRIERS								
ALLEGIAN AIR	0	0	0.0%	-	1,705,271	100.0%	1,705,271	100.0%
AMERISTAR	-	-	0.0%	-	107,000	100.0%	107,000	100.0%
BOEING COMMERCIAL AIRPLANE	163,900	-	-100.0%	163,900	-	-100.0%	-	-100.0%
BOMBARDIER	2,805,293	1,629,668	-41.9%	22,913,314	24,921,065	8.8%	24,921,065	8.8%
BOUTIQUE AIR	-	-	0.0%	-	-	0.0%	-	0.0%
DELTA PRIVATE JETS	-	-	0.0%	-	-	0.0%	-	0.0%
EXECUTIVE JET MANAGEMENT	-	-	0.0%	-	-	0.0%	-	0.0%
FLIGHT OPTIONS	-	-	0.0%	-	-	0.0%	-	0.0%
KALITTA CHARTERS	253,840	-	-100.0%	2,351,960	862,600	-63.3%	862,600	-63.3%
KEYLIME AIR	-	-	0.0%	131,526	364,948	177.5%	364,948	177.5%
MIAMI AIR	-	-	0.0%	-	-	0.0%	-	0.0%
NETJETS	7,271,630	7,603,583	4.6%	68,240,632	65,630,812	-3.8%	65,630,812	-3.8%
SIERRA PACIFIC	-	-	0.0%	330,000	110,000	-66.7%	110,000	-66.7%
SUN COUNTRY	-	-	0.0%	-	5,508,100	100.0%	5,508,100	100.0%
SWIFT AIR	-	-	0.0%	-	-	0.0%	-	0.0%
VIRGIN AMERICA	-	-	0.0%	-	-	0.0%	-	0.0%
XOJET	1,514,100	594,600	-60.7%	7,694,850	9,837,400	27.8%	9,837,400	27.8%
OTHER CHARTER	-	-	0.0%	-	-	0.0%	-	0.0%
SUBTOTAL CHARTER CARRIERS:	12,008,763	9,827,851	-18.2%	101,826,182	109,047,196	7.1%	109,047,196	7.1%
CARGO CARRIERS								
ABX AIR INC	566,000	-	-100.0%	1,937,000	3,874,000		3,874,000	100.0%
AIRNET 11	125,900	155,100	23.2%	947,300	993,200	4.8%	993,200	4.8%
ALPINE AVIATION	3,471,300	3,108,900	-10.4%	32,129,900	33,859,200	5.4%	33,859,200	5.4%
AMERIFLIGHT	386,400	322,000	-16.7%	13,436,776	4,294,988	-68.0%	4,294,988	-68.0%
AMERIJET INTERNATIONAL	4,624,000	4,896,000	5.9%	7,888,000	49,830,000	531.7%	49,830,000	531.7%
AMERISTAR	326,800	653,600	100.0%	381,400	735,300	92.8%	735,300	92.8%
ATLAS AIR	-	-	0.0%	870,000	-	-100.0%	-	-100.0%
CORPORATE AIR (BILLINGS)	1,326,000	1,139,000	-14.1%	14,169,500	12,971,000	-8.5%	12,971,000	-8.5%
EMPIRE	988,428	894,292	-9.5%	9,454,185	9,685,095	2.4%	9,685,095	2.4%
FEDEX EXPRESS	69,604,000	55,294,500	-20.6%	624,907,800	578,031,600	-7.5%	578,031,600	-7.5%
GEM AIR	1,055,000	289,000	-72.6%	6,388,000	5,096,000	-20.2%	5,096,000	-20.2%
NORTHERN AIR CARGO	3,146,000	2,783,000	-11.5%	20,570,000	36,155,000	75.8%	36,155,000	75.8%
SOUTHERN AIR INC	-	-	0.0%	-	-	0.0%	-	0.0%
SWIFT AIR	-	576,000	100.0%	-	6,192,000	100.0%	6,192,000	100.0%
UPS	85,526,080	69,763,100	-18.4%	591,367,320	523,851,260	-11.4%	523,851,260	-11.4%
WESTERN AIR EXPRESS	707,000	340,000	-51.9%	4,560,500	3,759,480	-17.6%	3,759,480	-17.6%
OTHER CARGO	-	-	0.0%	-	-	0.0%	-	0.0%
SUBTOTAL CARGO CARRIERS:	171,852,908	140,214,492	-18.4%	1,329,007,681	1,269,328,123	-4.5%	1,269,328,123	-4.5%
TOTAL LANDED WEIGHT	1,335,326,082	1,296,769,388	-2.9%	15,948,838,004	15,428,911,593	-3.3%	15,428,911,593	-3.3%

**SALT LAKE CITY INTERNATIONAL AIRPORT
CARGO ACTIVITY REPORT
TWELVE MONTHS ENDED DECEMBER 2022**

	December 2021	December 2022	CHANGE	Year to date 2021	Year to date 2022	CHANGE	12 MO ROLLING Ending 12/2022	% CHANGE
ENPLANED CARGO								
PASSENGER CARRIERS								
ALASKA	4,975	5,524	11.04%	98,209	97,679	-0.54%	97,679	-0.54%
Horizon Air / Alaska	-	-	0.00%	10,655	4,118	-61.35%	4,118	-61.35%
Skywest / Alaska	1,916	242	-87.37%	29,882	20,244	-32.25%	20,244	-32.25%
AMERICAN	4,279	8,887	107.69%	58,748	87,847	49.53%	87,847	49.53%
American Eagle/Republic	-	-	0.00%	140	-	-100.00%	-	-100.00%
Envoy Air (American)	-	-	0.00%	464	-	-100.00%	-	-100.00%
Mesa	-	-	0.00%	293	-	-100.00%	-	-100.00%
SkyWest (American)	700	-	-100.00%	13,397	6,022	-55.05%	6,022	-55.05%
DELTA	557,971	756,901	35.65%	7,028,033	8,348,137	18.78%	8,348,137	18.78%
KLM ROYAL DUTCH	-	-	0.00%	-	892,138	100.00%	892,138	100.00%
SOUTHWEST	248,539	263,459	6.00%	3,639,021	4,427,640	21.67%	4,427,640	21.67%
UNITED	13,231	38,194	188.67%	101,083	127,523	26.16%	127,523	26.16%
Others	7,832	-	-100.00%	127,531	88,961	-30.24%	88,961	-30.24%
CARGO CARRIERS								
FEDEX EXPRESS*	10,427,623	9,332,497	-10.50%	115,302,618	100,024,037	-13.25%	100,024,037	-13.25%
GEM AIR	76,432	21,453	-71.93%	783,006	511,719	-34.65%	511,719	-34.65%
SWIFT AIR	-	3,638	100.00%	-	150,829	100.00%	150,829	100.00%
UPS	8,589,920	7,794,002	-9.27%	67,354,705	61,991,487	-7.96%	61,991,487	-7.96%
MISC CARGO	1,382,855	1,233,906	-10.77%	13,385,148	12,964,408	-3.14%	12,964,408	-3.14%
ABX AIR	44,884	-	-100.00%	126,177	294,741	133.59%	294,741	133.59%
TOTAL ENPLANED CARGO (LBS)	21,316,273	19,458,703	-8.71%	207,932,933	189,742,789	-8.75%	189,742,789	-8.75%
DEPLANED CARGO								
PASSENGER CARRIERS								
ALASKA	14,944	13,226	-11.50%	168,171	202,105	20.18%	202,105	20.18%
Horizon Air / Alaska	265	-	-100.00%	16,896	5,716	-66.17%	5,716	-66.17%
Skywest / Alaska	4,548	3,737	-17.83%	79,919	31,411	-60.70%	31,411	-60.70%
AMERICAN	27,168	32,501	19.63%	356,134	452,970	27.19%	452,970	27.19%
American Eagle/Republic	-	-	0.00%	7	-	-100.00%	-	-100.00%
Envoy	300	-	-100.00%	2,294	9	-99.61%	9	-99.61%
Mesa (American)	-	-	0.00%	378	933	146.83%	933	146.83%
SkyWest (American)	1,027	-	-100.00%	12,201	4,654	-61.86%	4,654	-61.86%
DELTA	867,335	1,085,672	25.17%	10,397,803	12,868,194	23.76%	12,868,194	23.76%
KLM ROYAL DUTCH	-	-	0.00%	-	1,565,124	100.00%	1,565,124	100.00%
SOUTHWEST	412,561	308,111	-25.32%	4,829,039	4,268,323	-11.61%	4,268,323	-11.61%
UNITED	26,032	21,453	-17.59%	337,103	286,246	-15.09%	286,246	-15.09%
Others	-	-	0.00%	228,517	96,434	-57.80%	96,434	-57.80%
CARGO CARRIERS								
FEDEX EXPRESS*	10,068,059	9,161,178	-9.01%	105,177,787	99,192,463	-5.69%	99,192,463	-5.69%
GEM AIR	17,206	1,912	-88.89%	254,648	104,142	-59.10%	104,142	-59.10%
SWIFT AIR	-	100,188	100.00%	-	1,084,134	100.00%	1,084,134	100.00%
UPS	8,979,435	7,809,997	-13.02%	74,894,391	69,592,882	-7.08%	69,592,882	-7.08%
MISC CARGO	1,529,614	1,100,924	-28.03%	7,846,301	11,456,927	46.02%	11,456,927	46.02%
ABX AIR	85,105	-	-100.00%	401,471	607,830	51.40%	607,830	51.40%
TOTAL DEPLANED CARGO (LBS)	21,948,494	19,638,899	-10.52%	204,601,589	201,212,667	-1.66%	201,212,667	-1.66%
TOTAL CARGO LBS	43,264,767	39,097,602	-9.63%	412,534,522	390,955,456	-5.23%	390,955,456	-5.23%

*FEDEX EXPRESS includes mail



Salt Lake City
Department of Airports

COMPARISON OF ON TIME OPERATIONS
November 2022

ARRIVALS

Airport	Flights	% On Time	Rank
IAD WASHINGTON DULLES	6,049	86.2	1
DTW DETROIT METRO WAYNE CNTY	10,114	86.0	2
SLC SALT LAKE CITY INTL	8,540	85.7	3
ATL HARTSFIELD-JACKSON ATLANTA INTL	26,460	85.6	4
SFO SAN FRANCISCO INTL	10,435	84.4	5
CLT CHARLOTTE DOUGLAS	17,724	84.1	6
LAX LOS ANGELES INTL	15,330	83.0	7
PHL PHILADELPHIA INTL	8,134	83.0	8
MSP MINNEAPOLIS-ST. PAUL INTL	9,356	82.9	9
DEN DENVER INTL	23,009	82.4	10
BNA NASHVILLE INTL	7,547	82.1	11
BOS BOSTON LOGAN INTL	11,755	81.9	12
BWI BALTIMORE/WASHINGTON INTL	7,151	81.9	13
PHX PHOENIX SKY HARBOR INTL	13,918	81.9	14
ORD CHICAGO O HARE	23,660	81.6	15
MDW CHICAGO MIDWAY	6,696	81.4	16
DAL DALLAS LOVE FIELD	5,794	80.8	17
SAN SAN DIEGO LINDBERGH FIELD	7,502	80.8	18
IAH HOUSTON GEORGE BUSH	12,429	80.3	19
SEA SEATTLE-TACOMA INTL	13,981	80.1	20
JFK NEW YORK JFK INTL	11,323	77.4	21
MIA MIAMI INTL	7,928	77.3	22
DCA RONALD REAGAN NATIONAL	12,026	76.7	23
DFW DALLAS-FT. WORTH REGIONAL	21,425	76.6	24
TPA TAMPA INTL	5,972	76.3	25
EWR NEWARK LIBERTY INTERNATIONAL	12,150	75.6	26
LAS LAS VEGAS MCCARRAN INTL	14,779	75.4	27
FLL FT. LAUDERDALE	6,922	74.3	28
LGA NEW YORK LAGUARDIA	14,147	73.0	29
MCO ORLANDO INTL	12,601	68.7	30
AVERAGES	12,162		

DEPARTURES

Airport	Flights	% On Time	Rank
IAD WASHINGTON DULLES	4,889	87.9	1
SLC SALT LAKE CITY INTL	8,535	86.5	2
DTW DETROIT METRO WAYNE CNTY	9,991	86.2	3
SFO SAN FRANCISCO INTL	10,441	85.8	4
LAX LOS ANGELES INTL	15,328	85.2	5
PHL PHILADELPHIA INTL	6,899	84.6	6
SAN SAN DIEGO LINDBERGH FIELD	7,499	84.4	7
ATL HARTSFIELD-JACKSON ATLANTA INTL	26,470	84.0	8
MSP MINNEAPOLIS-ST. PAUL INTL	9,361	83.9	9
CLT CHARLOTTE DOUGLAS	15,428	83.1	10
BOS BOSTON LOGAN INTERNATIONAL	11,638	82.0	11
BNA NASHVILLE INTL	7,519	81.9	12
SEA SEATTLE-TACOMA INTL	13,984	81.8	13
ORD CHICAGO O HARE	20,802	81.4	14
PHX PHOENIX SKY HARBOR INTL	13,893	81.0	15
TPA TAMPA INTERNATIONAL	5,972	80.0	16
DCA RONALD REAGAN NATIONAL	11,741	79.8	17
IAH HOUSTON GEORGE BUSH	10,361	79.6	18
JFK NEW YORK JFK INTL	11,333	79.5	19
EWR NEWARK LIBERTY INTERNATIONAL	11,287	78.9	20
MIA MIAMI INTL	7,926	78.1	21
LGA NEW YORK LAGUARDIA	14,145	77.2	22
DFW DALLAS-FT. WORTH REGIONAL	21,433	77.1	23
DEN DENVER INTERNATIONAL	22,549	75.6	24
LAS LAS VEGAS MCCARRAN INTL	14,780	74.3	25
BWI BALTIMORE/WASHINGTON INTL	7,152	74.0	26
DAL DALLAS LOVE FIELD	5,793	73.7	27
FLL FT. LAUDERDALE	6,921	73.2	28
MDW CHICAGO MIDWAY	6,694	71.2	29
MCO ORLANDO INTL	12,572	67.5	30
AVERAGES	11,778		

ON TIME ARRIVAL PERFORMANCE AT SLC

By Carrier

Air Carrier	Flights	% On Time
UA UNITED	465	89.2%
DL DELTA	6,288	87.4%
WN SOUTHWEST	889	83.4%
AS ALASKA	215	80.5%
AA AMERICAN	328	74.1%
B6 JETBLUE	141	73.8%
F9 FRONTIER	118	69.5%
NK SPIRIT	96	67.7%
	8,540	84.4%

Source: DOT Air Travel Consumer Report